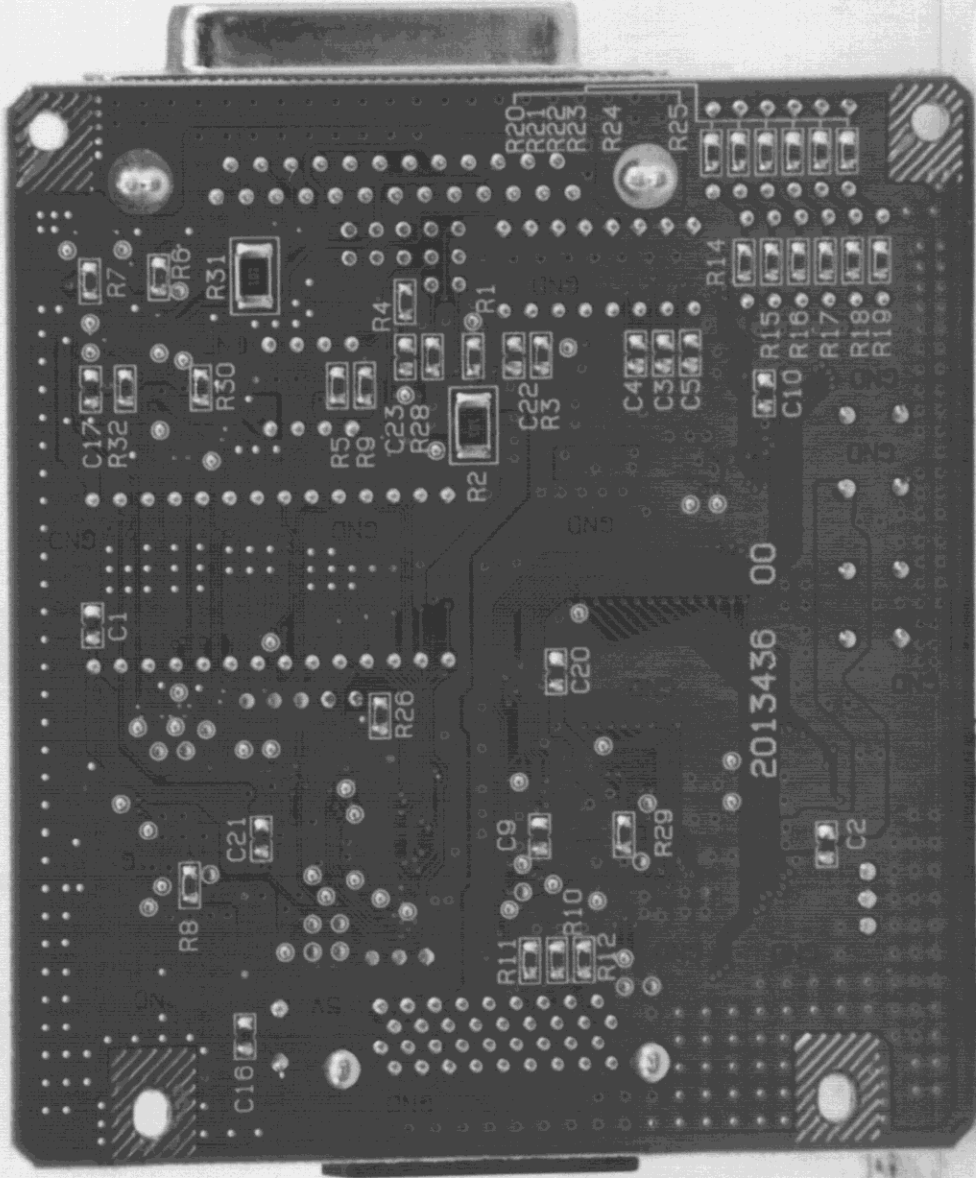
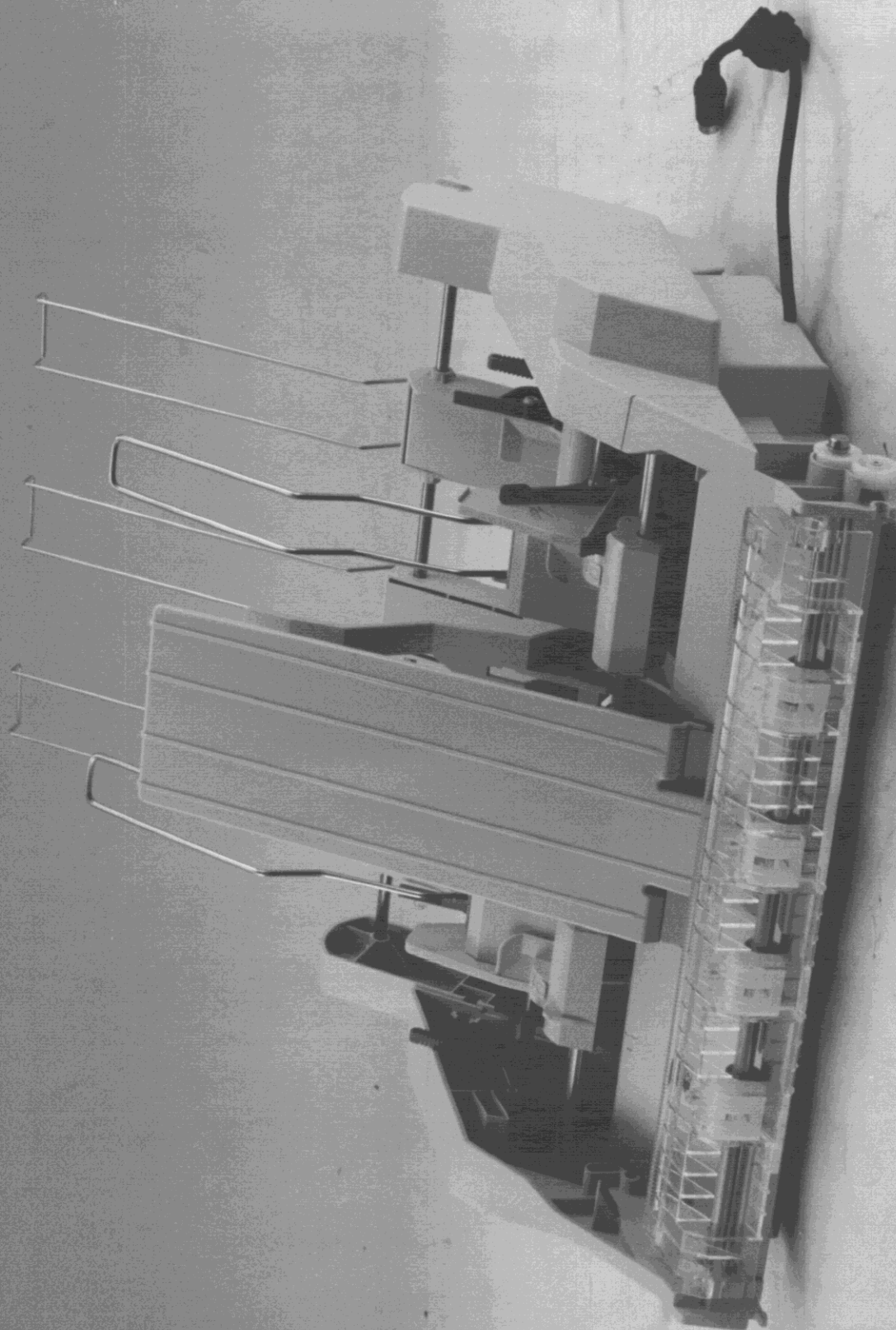


FCC ID : BKMFBP922A
17) Option interface card C82307 (Reverse)

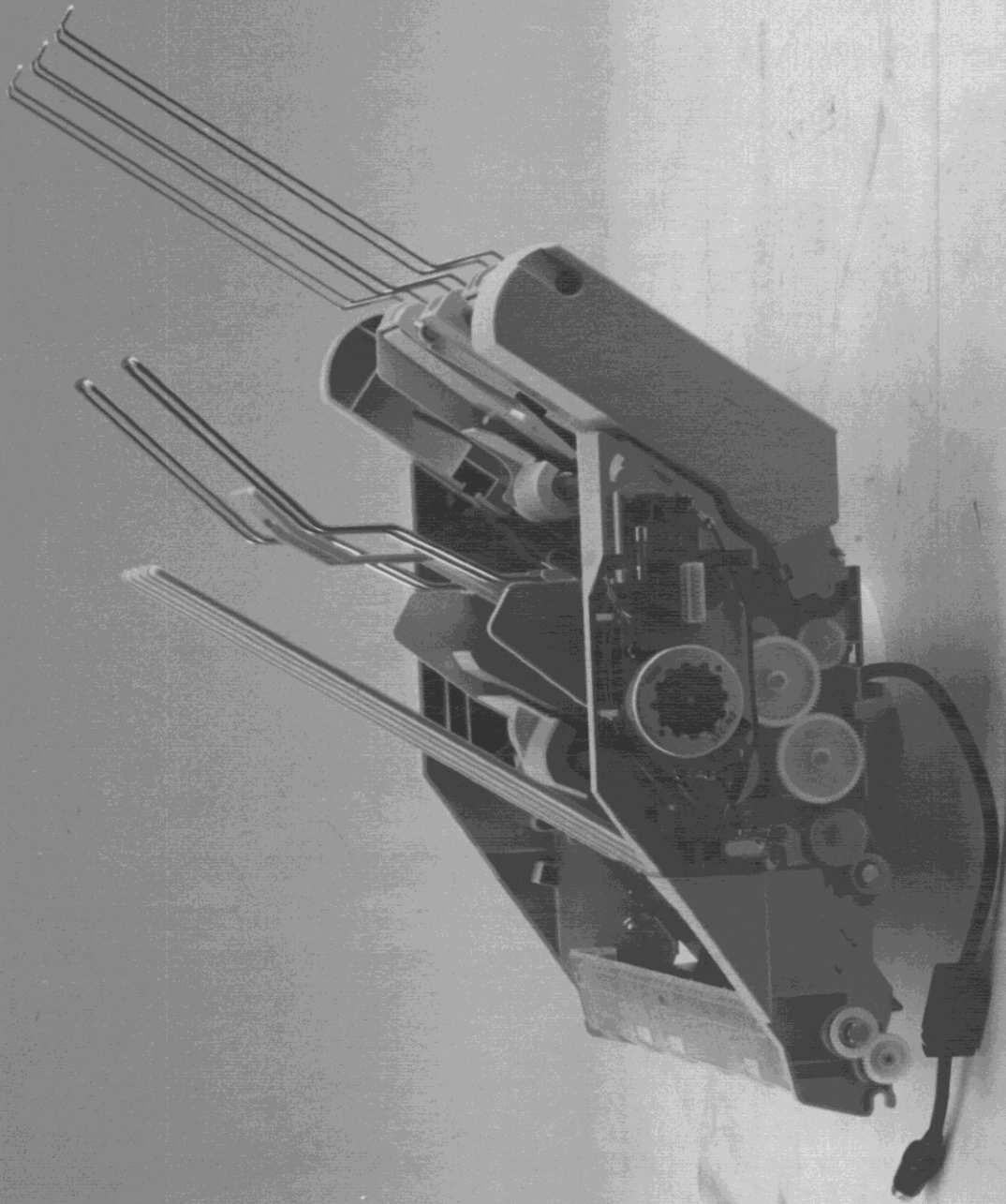


FCC ID : BKMFBP922A
18) Option interface card C82307
(Reverse : without steel plate)

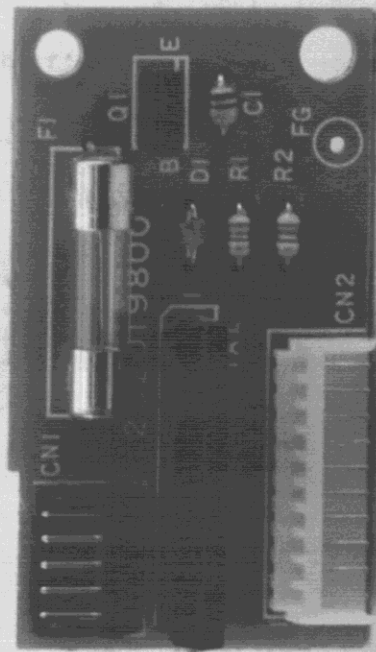


FCC ID : BKMFBP922A

19) Option cut sheet feeder

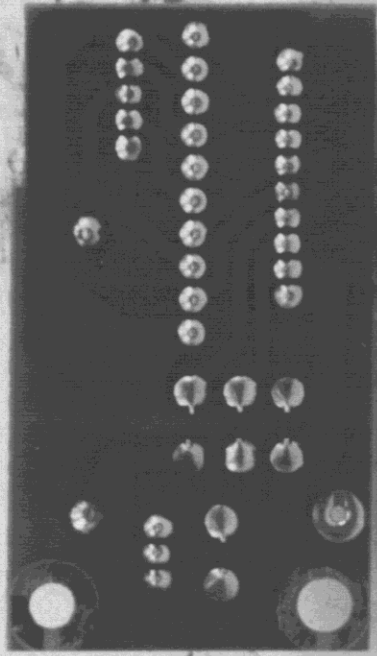


FCC ID : BKMFBP922A
20) Option cut sheet feeder (Inside View)

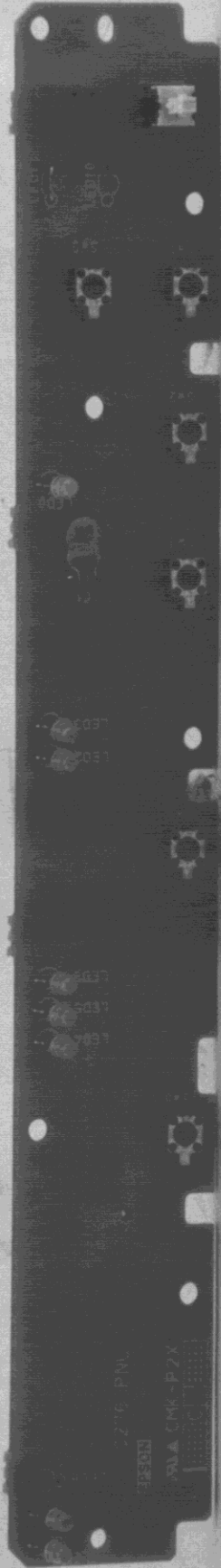


FCC ID : BKMFBP922A

21) Option cut sheet feeder Board (Surface)

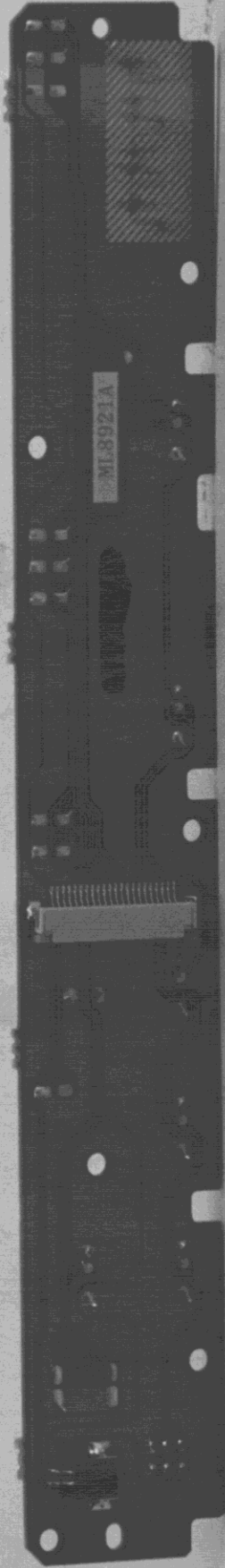


FCC ID : BKMFBP922A
22) Option cut sheet feeder Board (Reverse)

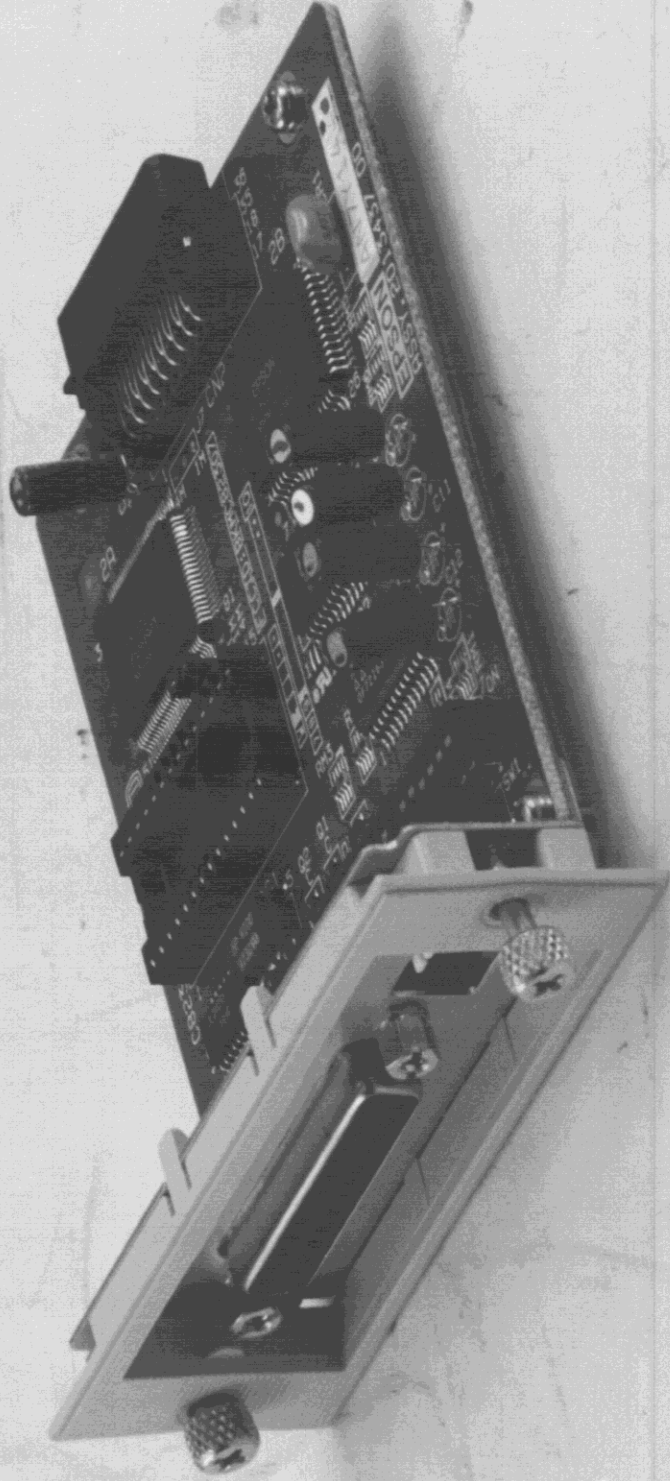


FCC ID : BKMFBP922A

13) Operation panel board (Surface)

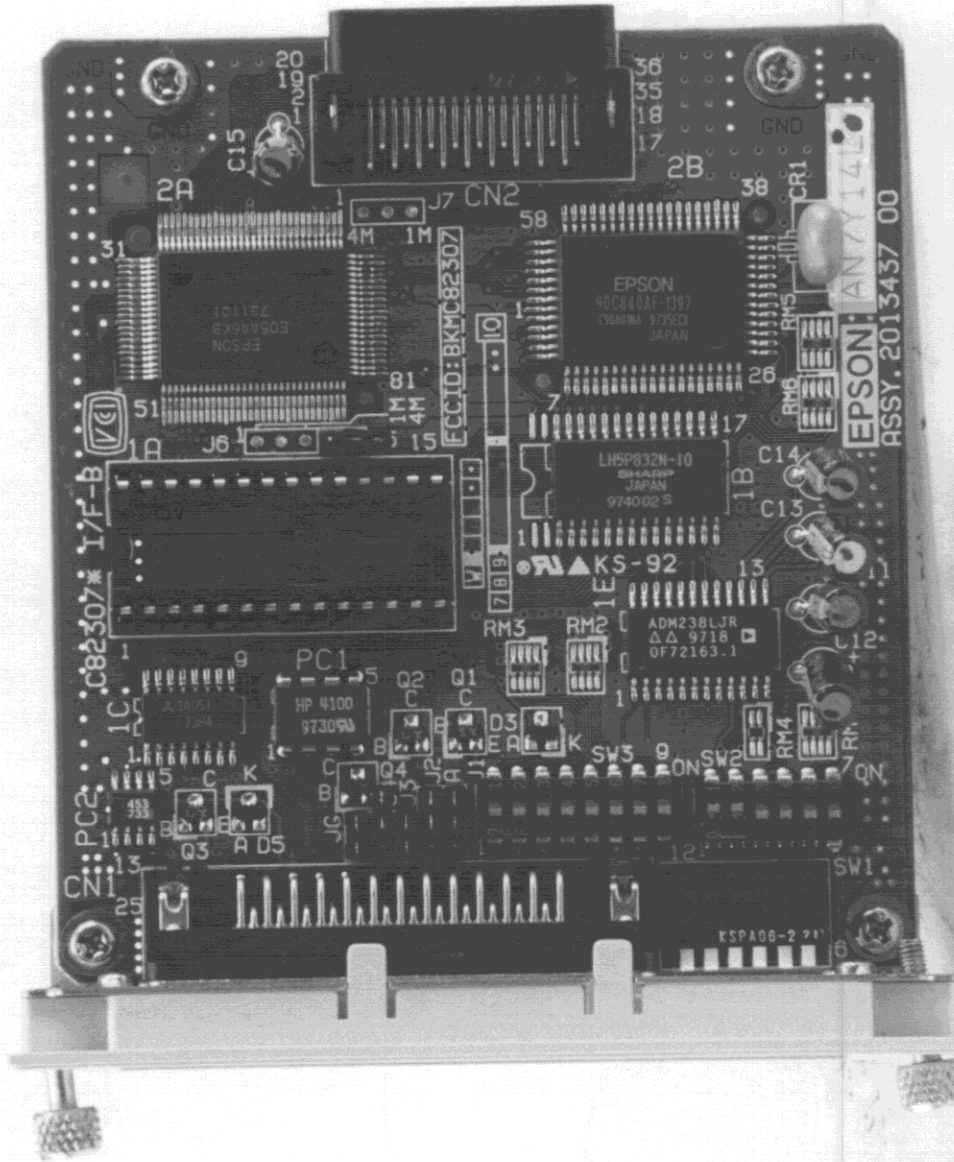


FCC ID : BKMFBP922A
14) Operation panel board (Reverse)

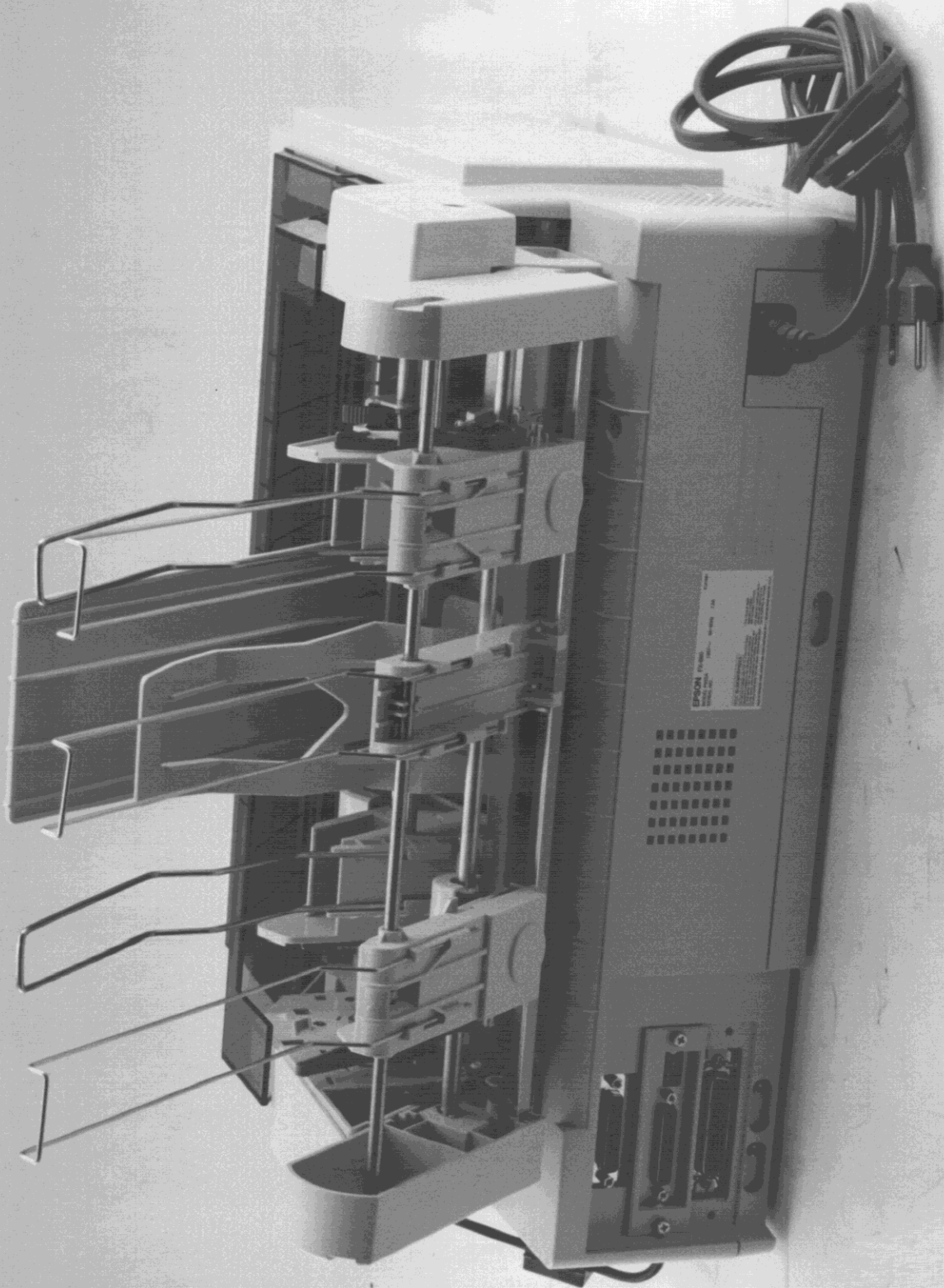


FCC ID : BKMFBP922A

15) Option interface card C82307

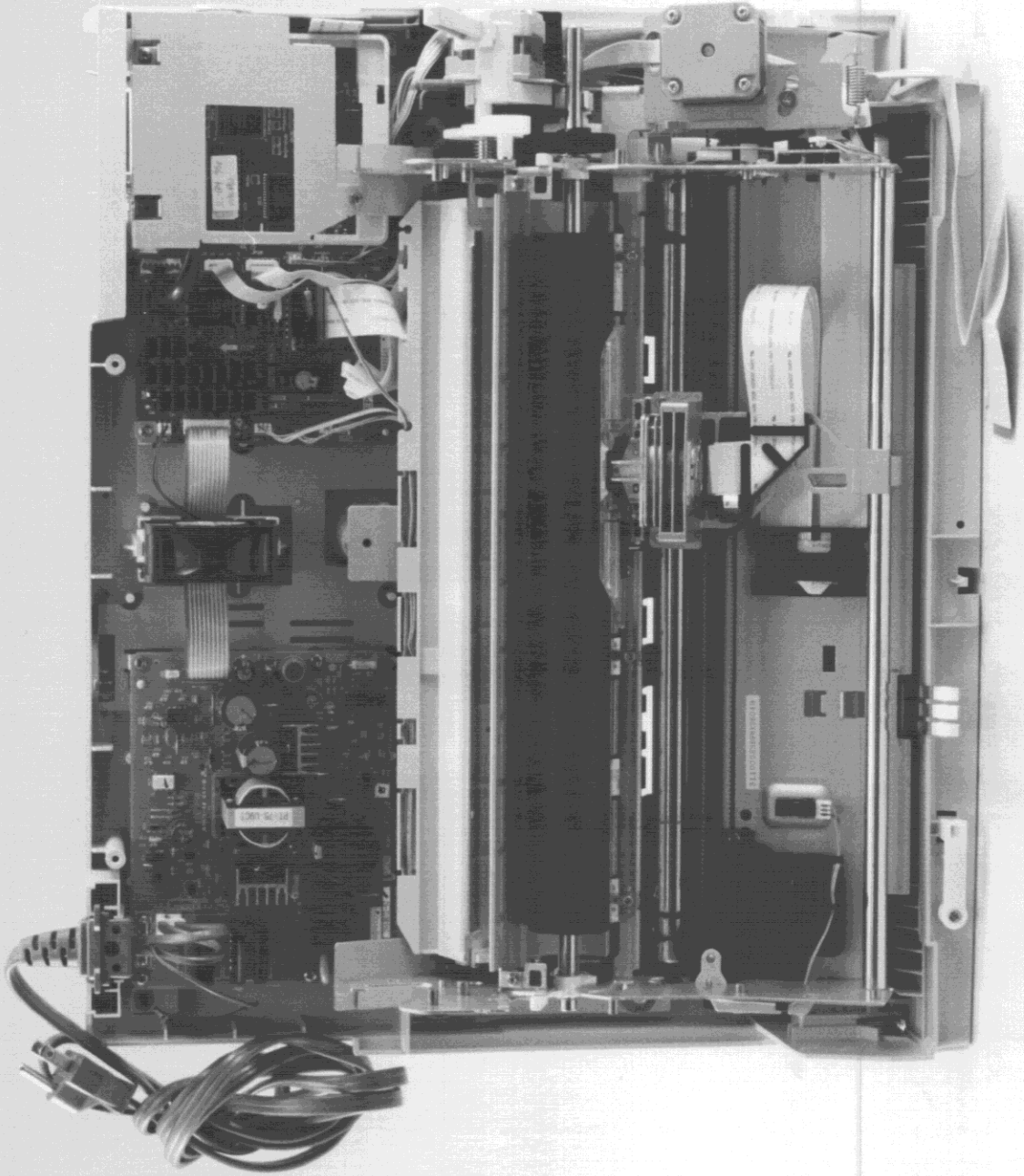


FCC ID : BKMFBP922A
16) Option interface card C82307 (Surface)



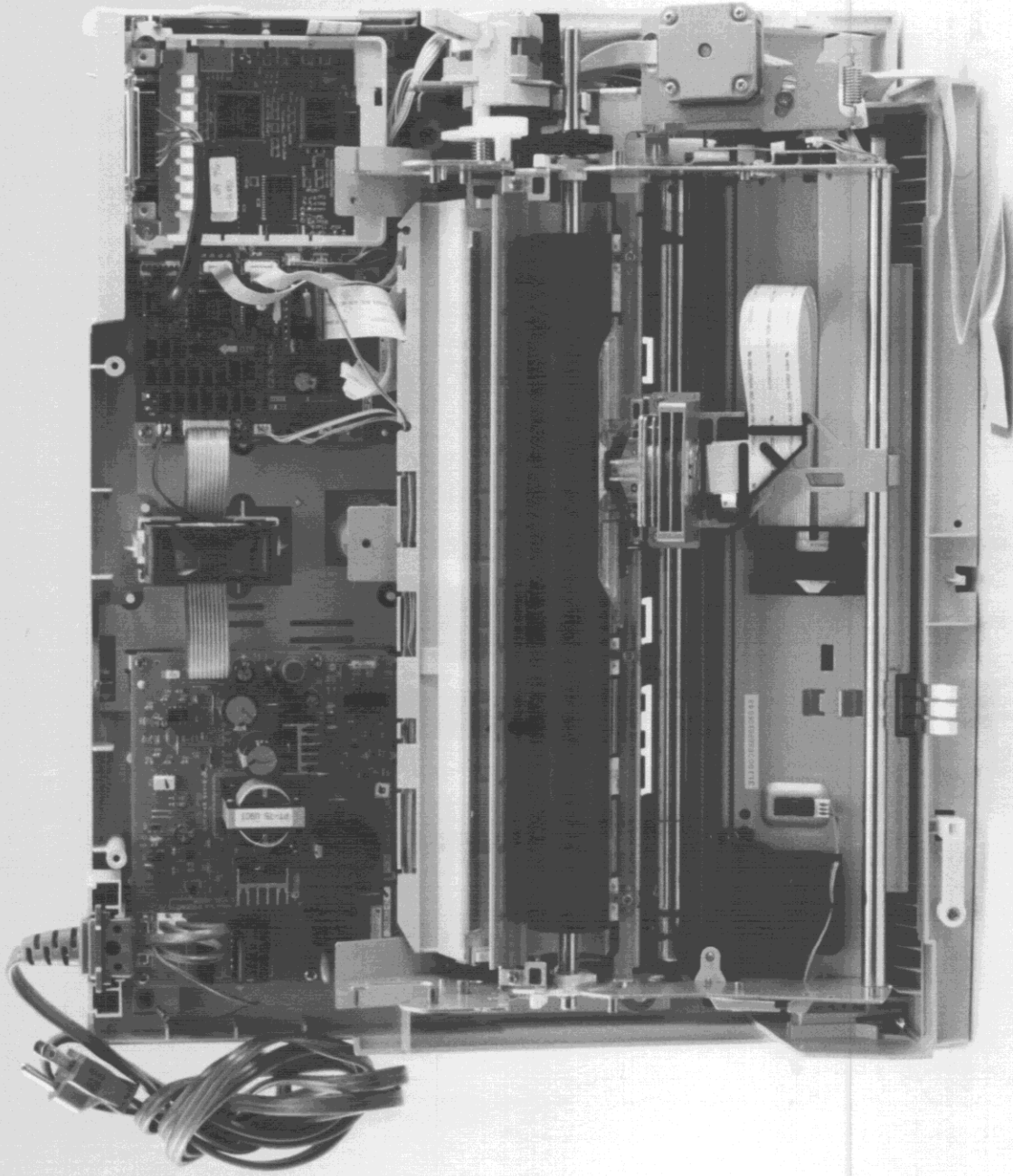
FCC ID : BKMFBP922A

4) Rear view (with options)



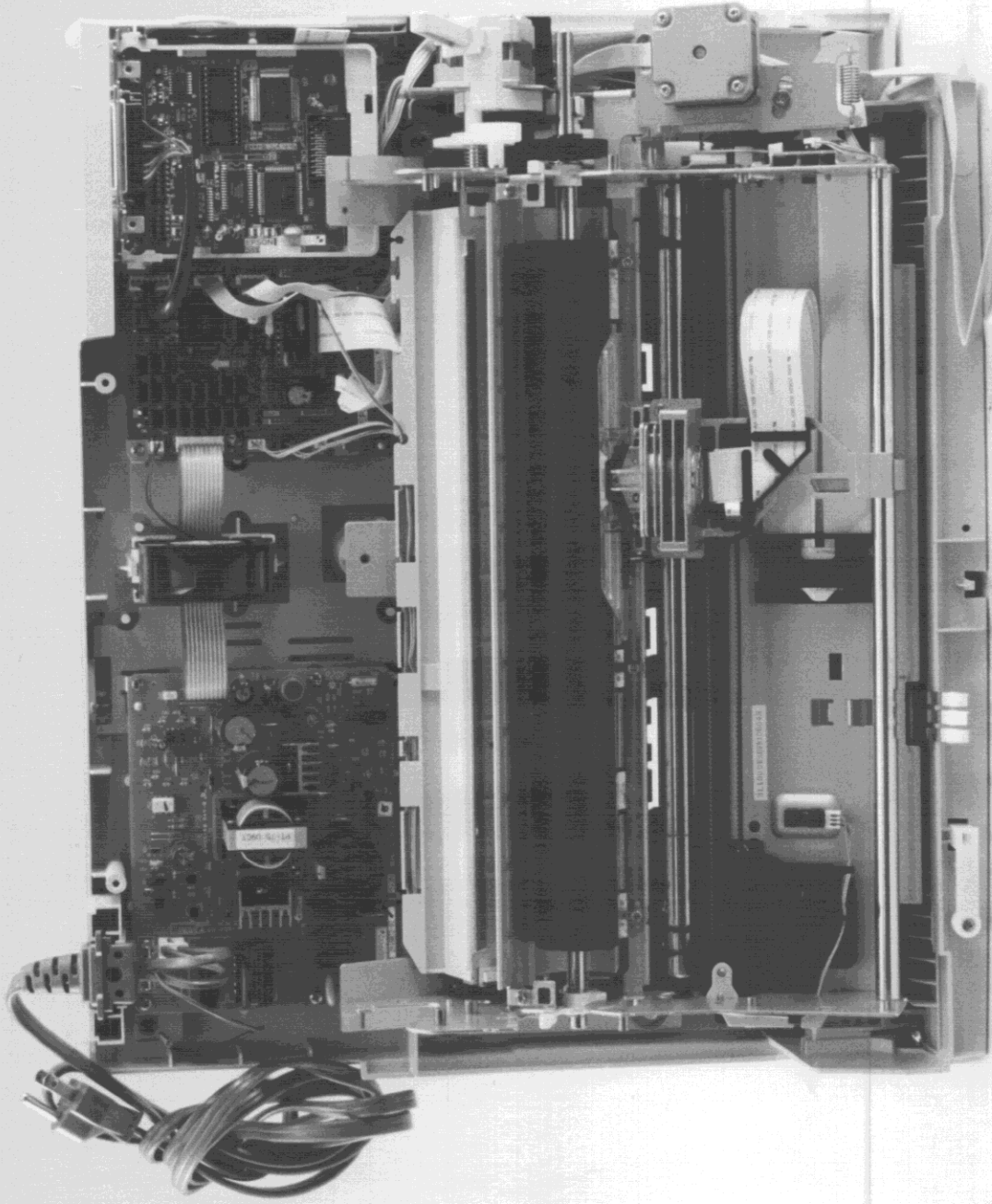
FCC ID : BKMFBP922A

5) Inside view



FCC ID : BKMFBP922A

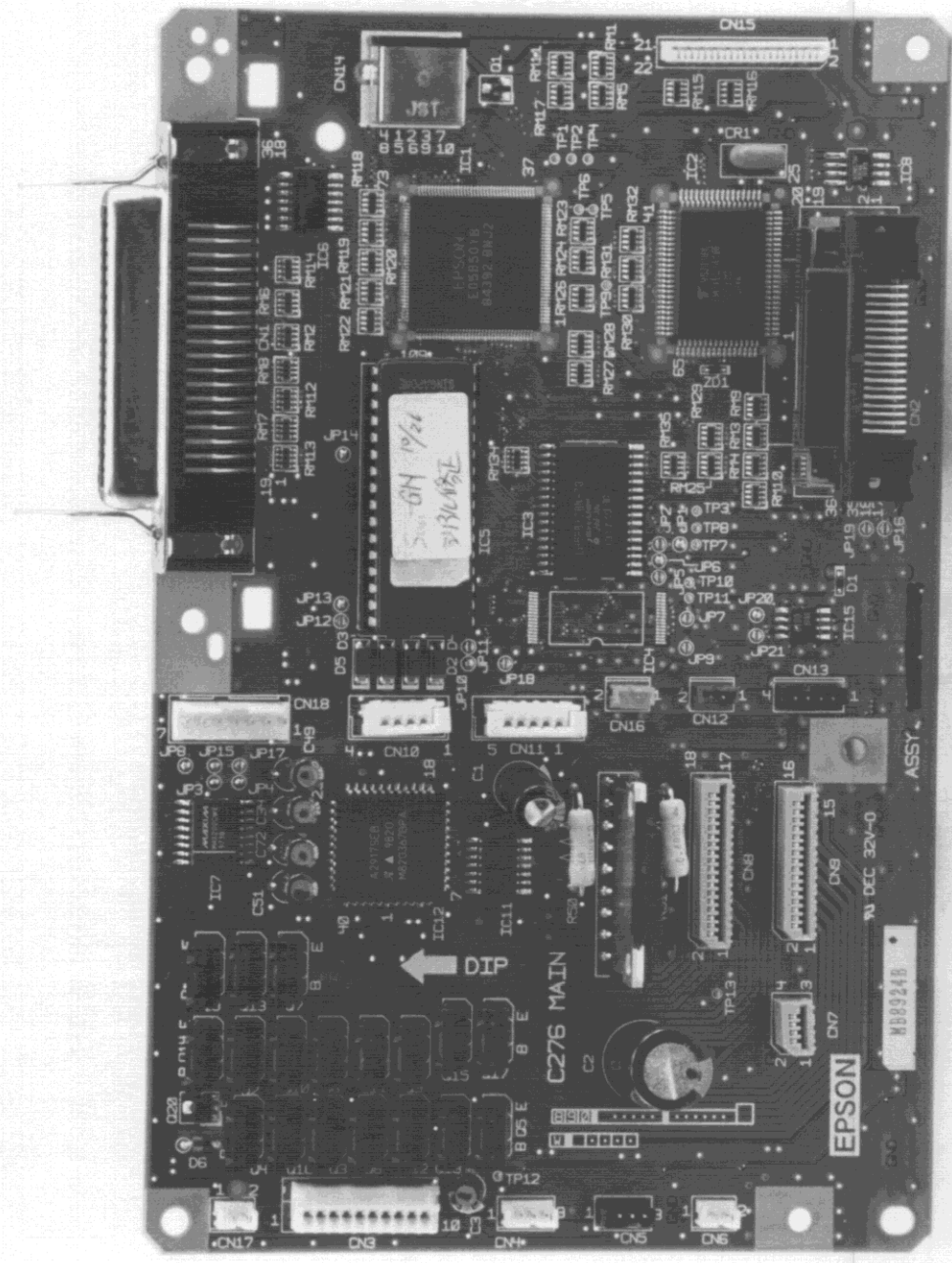
6) Inside view (without steel plate)



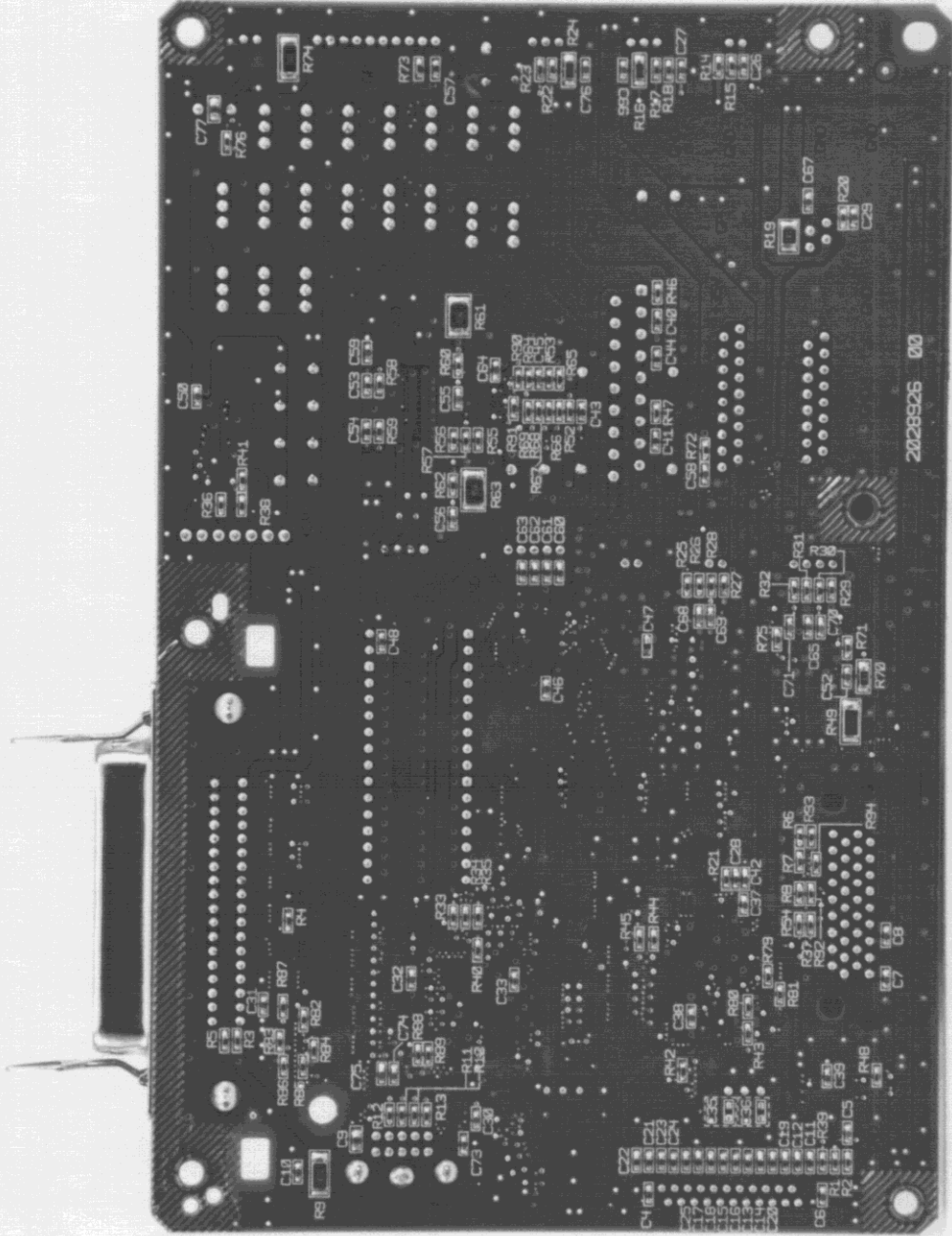
FCC ID : BKMFBP922A

7) Inside view

(without steel plate : with option)



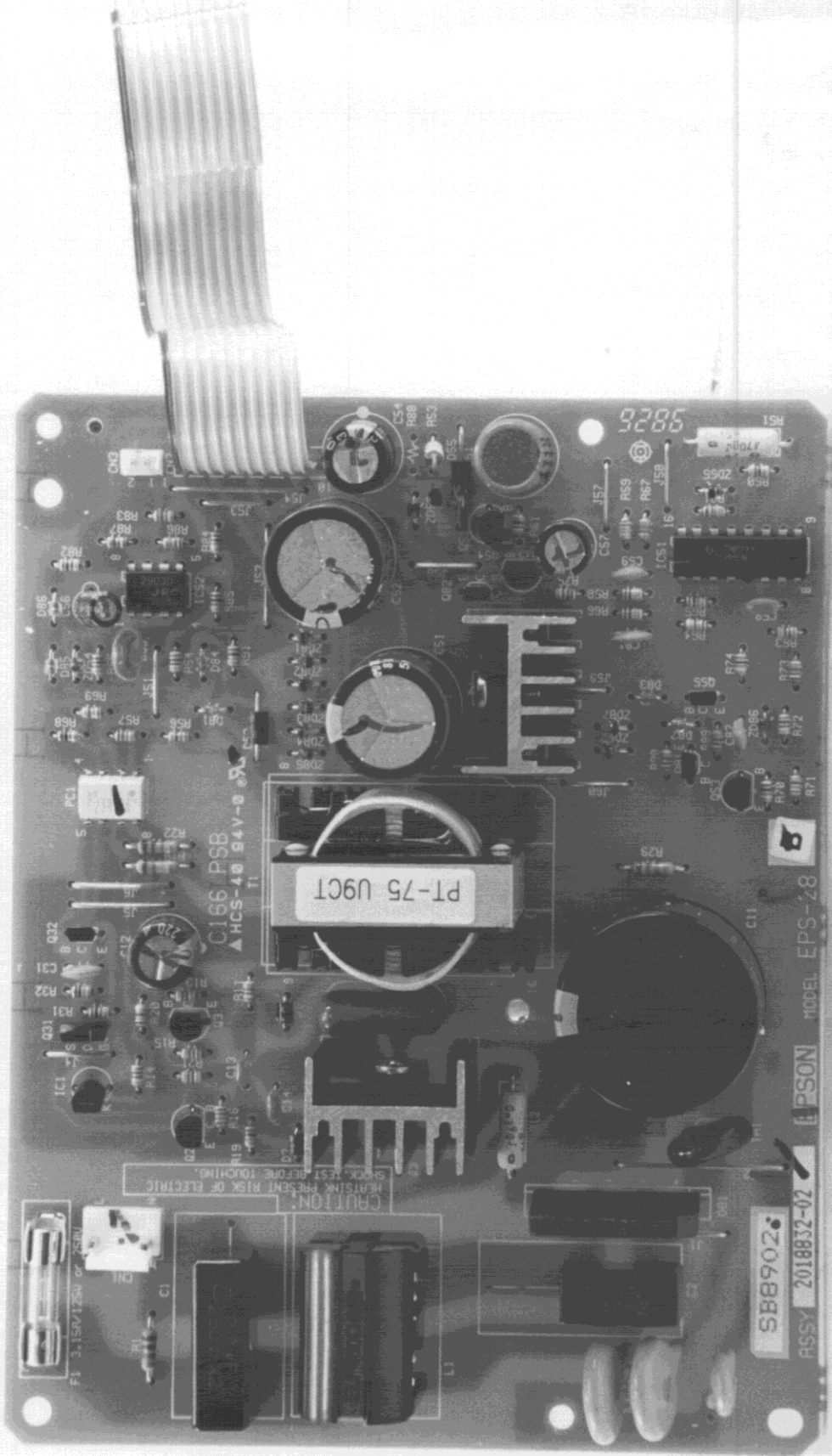
FCC ID : BKMF922A
8) Main board (Surface)



2028526 00

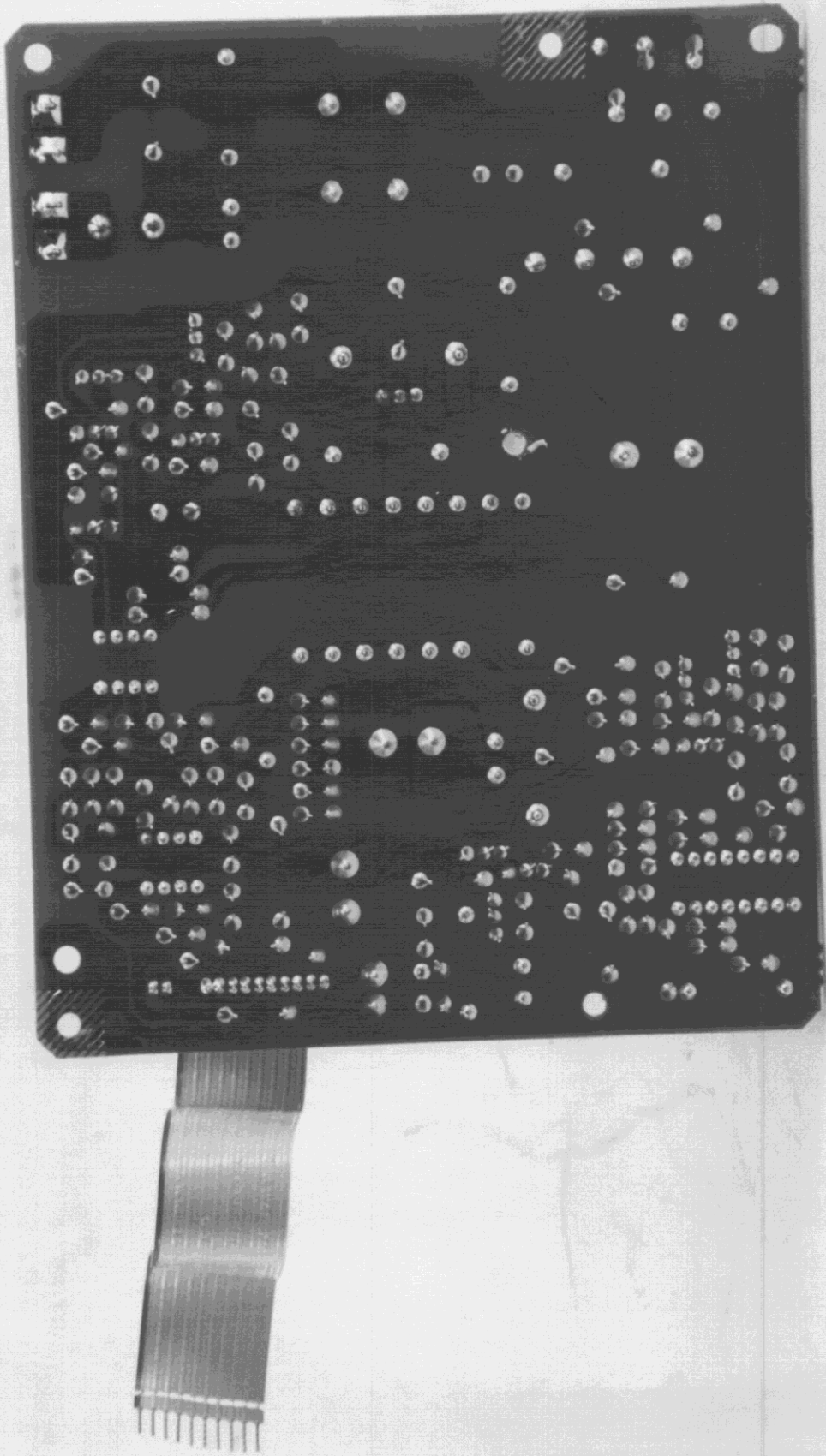
FCC ID : BKMFBP922A

9) Main board (Reverse)



FCC ID : BKMFBP922A

10) Power supply board (Surface)



FCC ID : BKMFBP922A

11) Power supply board (Reverse)