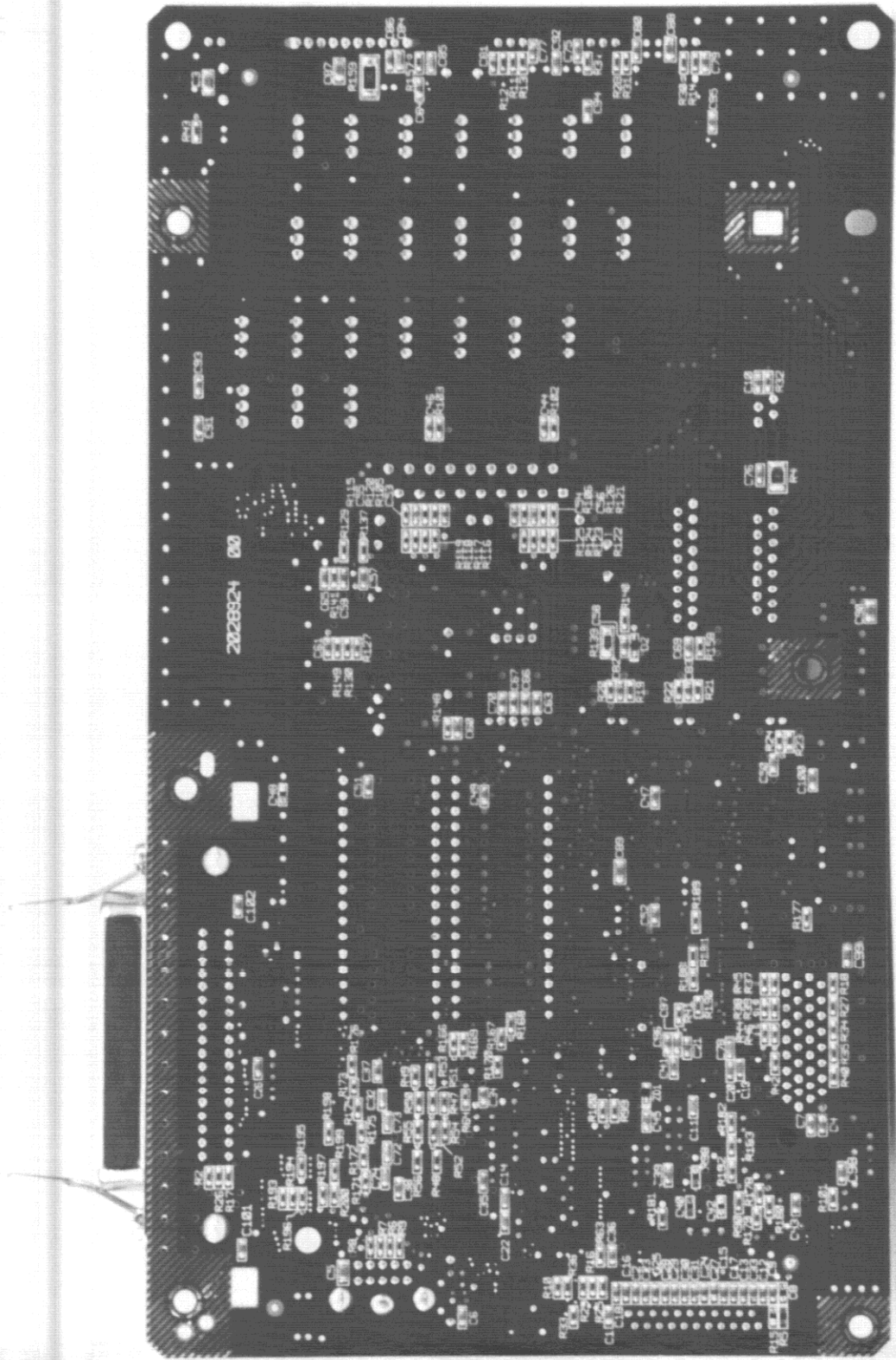
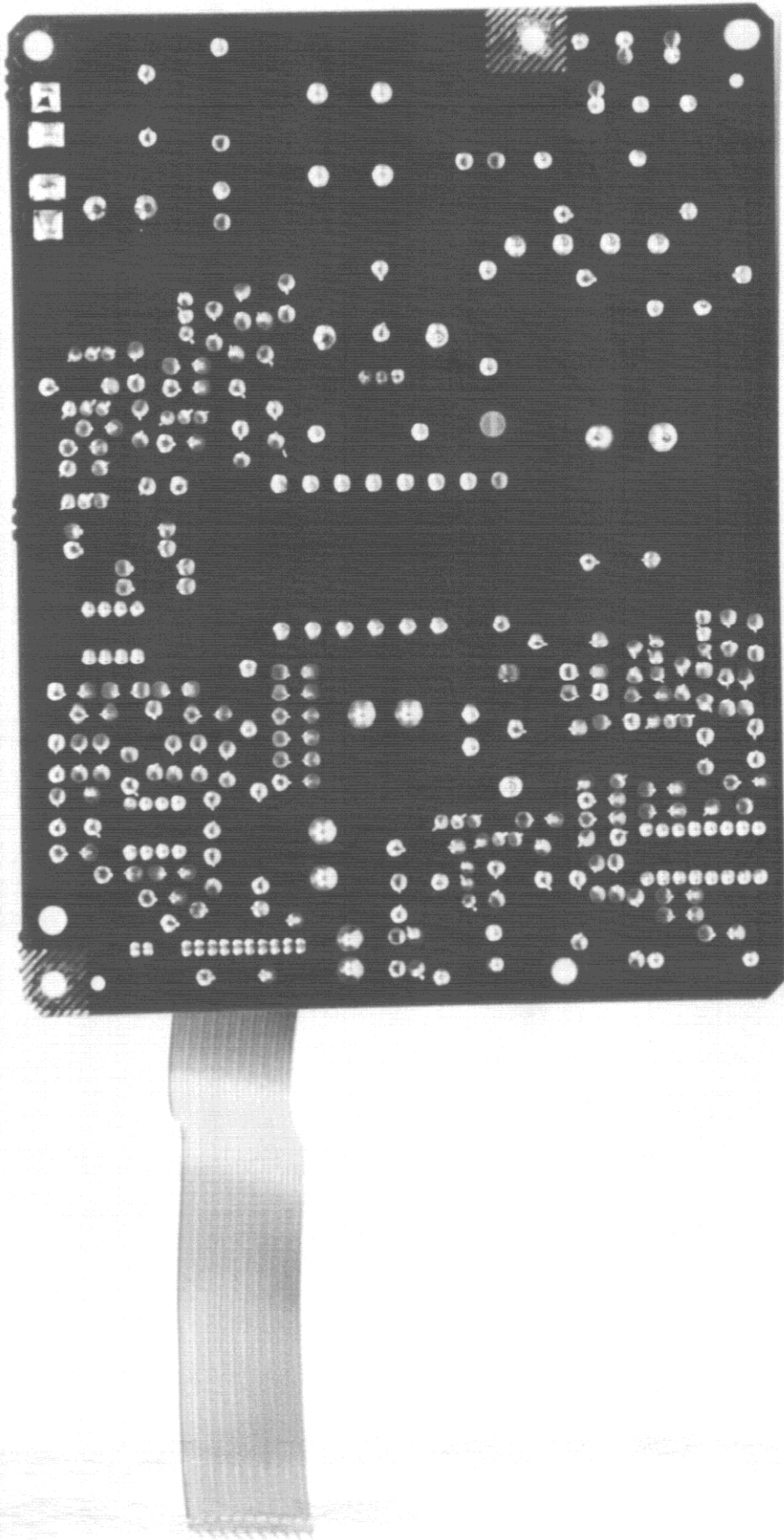


FCC ID : BKMFBP911B

8) Main board (Surface)

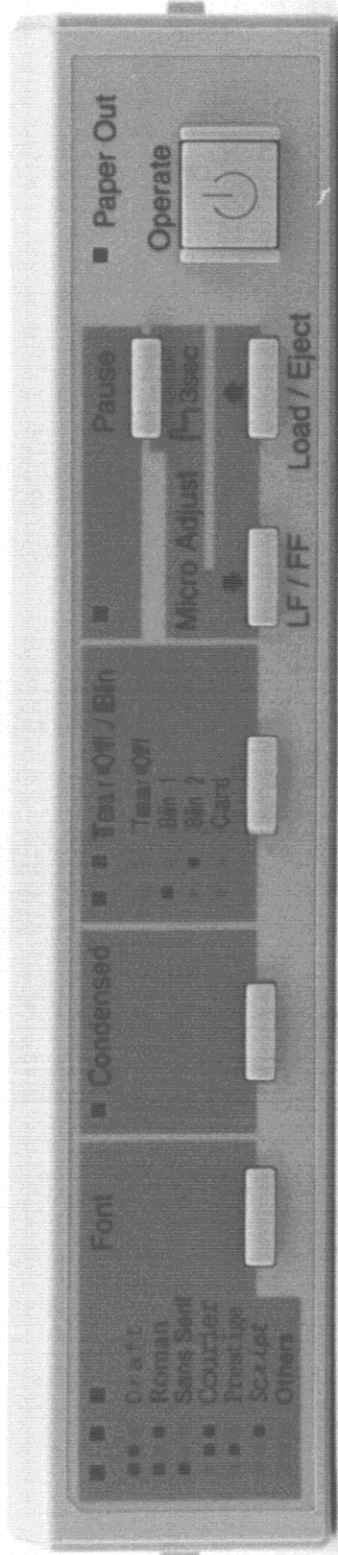


FCC ID : BKMFBP911B
9) Main board (Reverse)

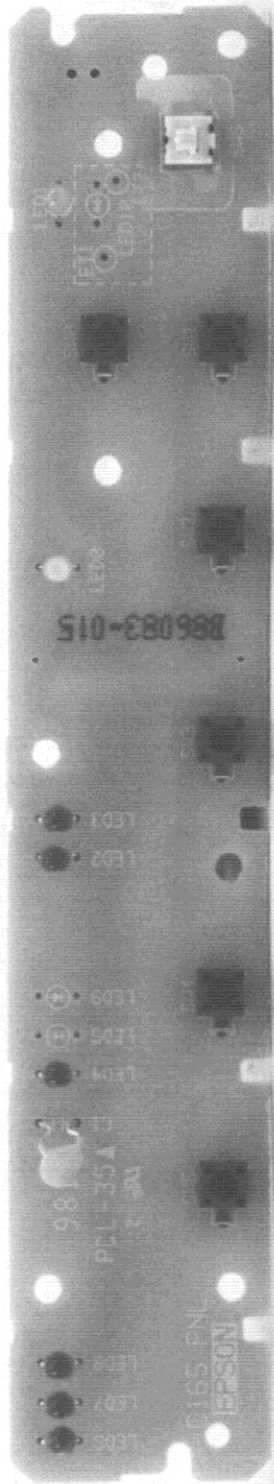


FCC ID : BKNFBP911B

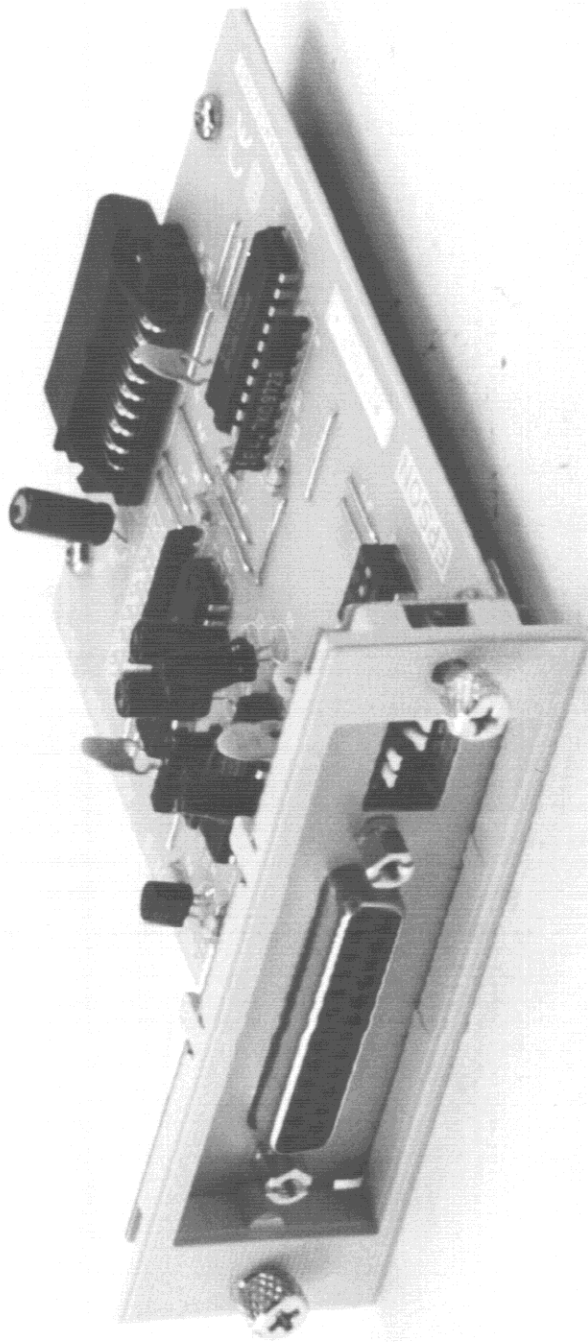
11) Power supply board (Reverse)



FCC ID : BKMEB911B
12) Operation panel



FCC ID : BKMFBP911B
13) Operation panel board (Surface)



FCC ID : BKMFBP911B
15) Option interface card C82305