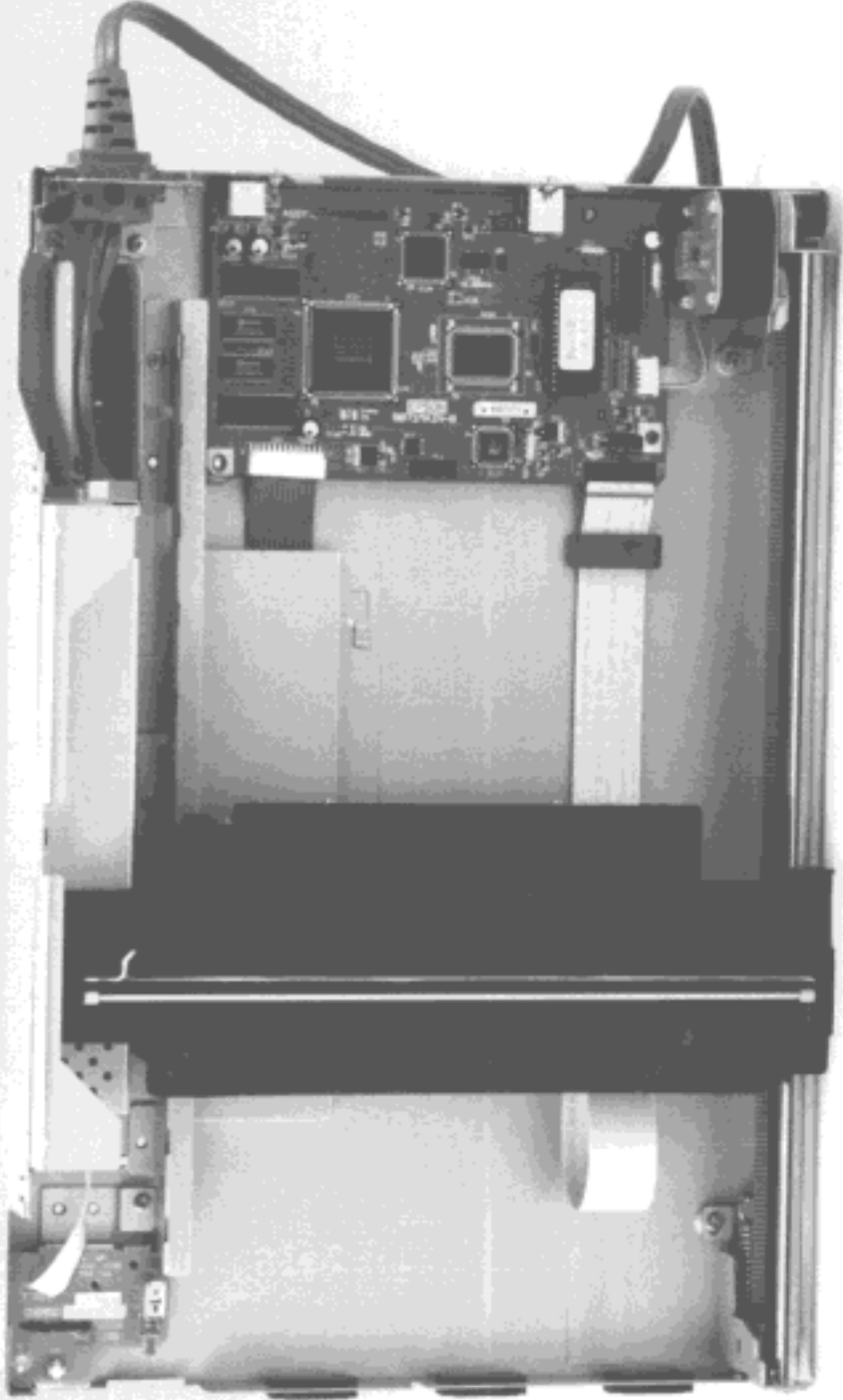


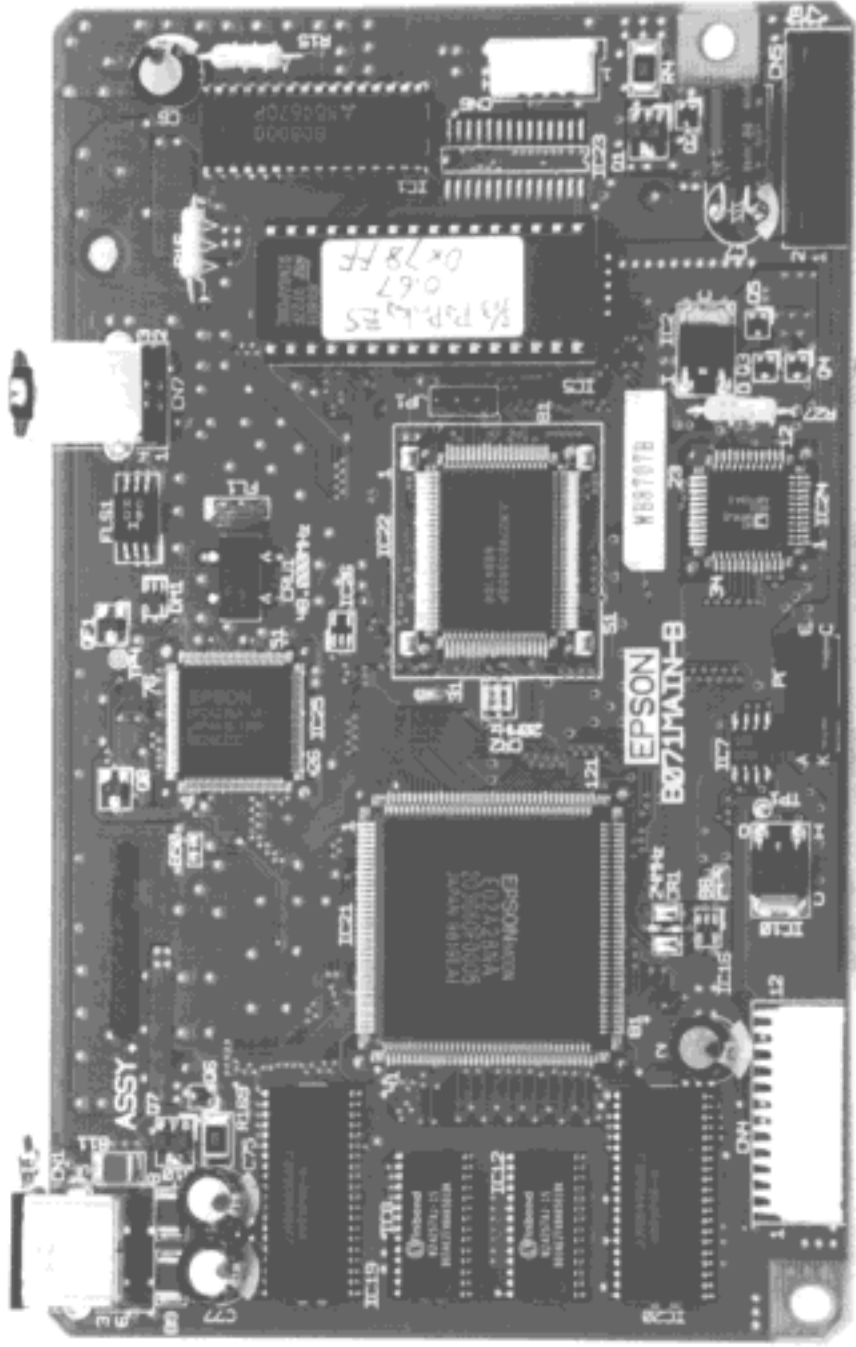
FCC ID : BKMFBG680B

7) Inside view

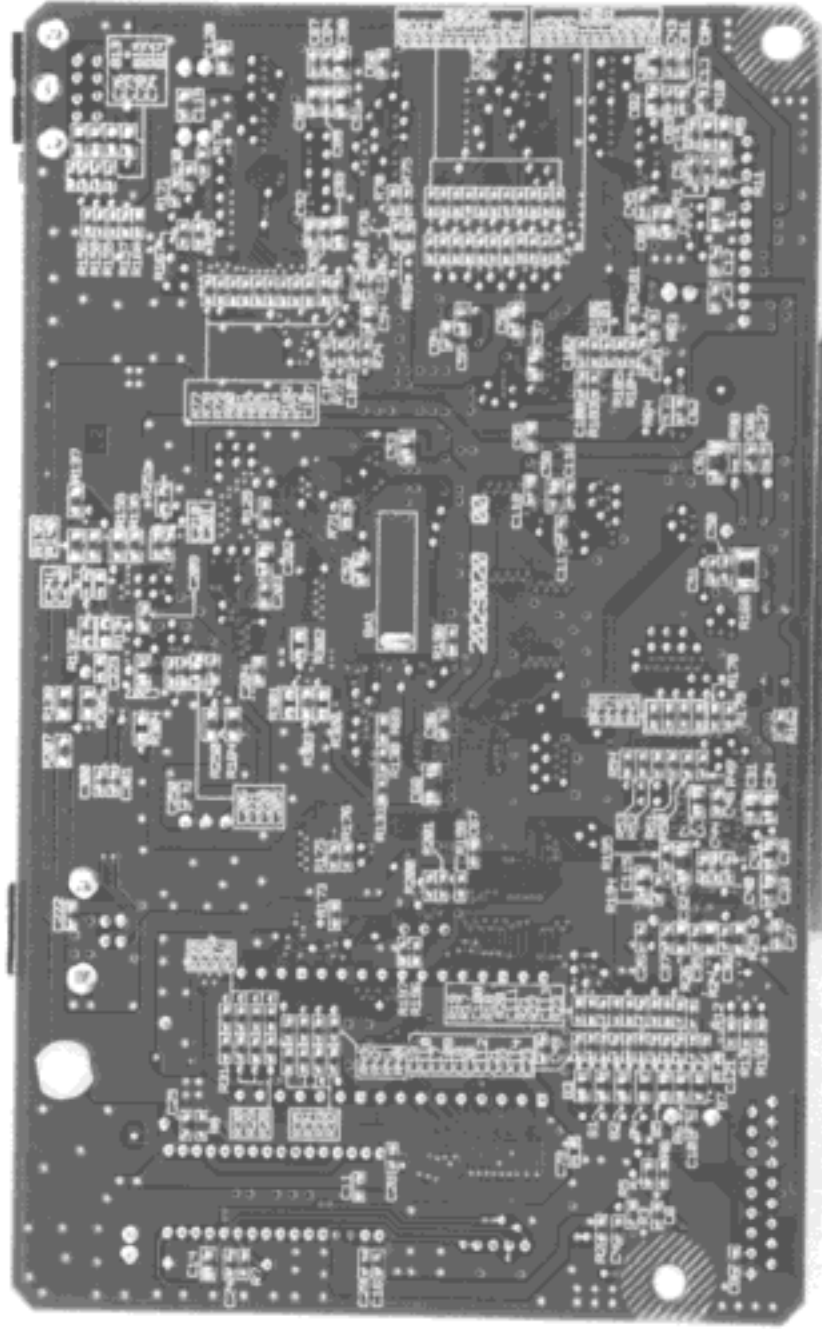


FCC ID : BKMFBG680B

8) Inside view without steel plate

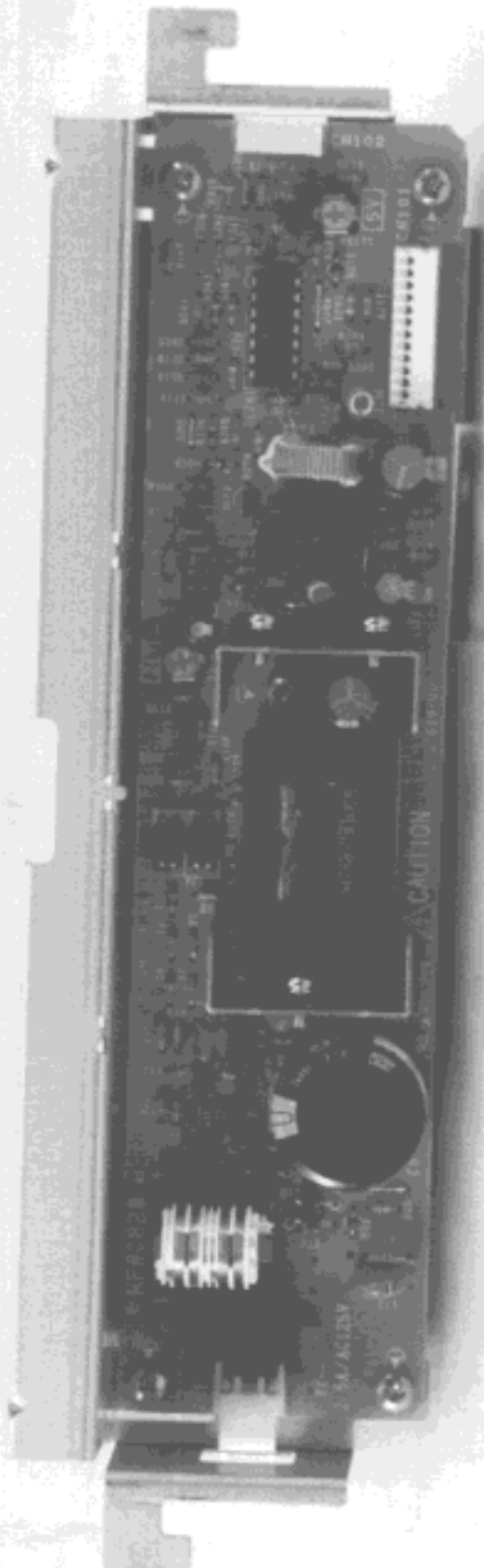


FCC ID : BKMPBG680B
9) Main Board (Surface)

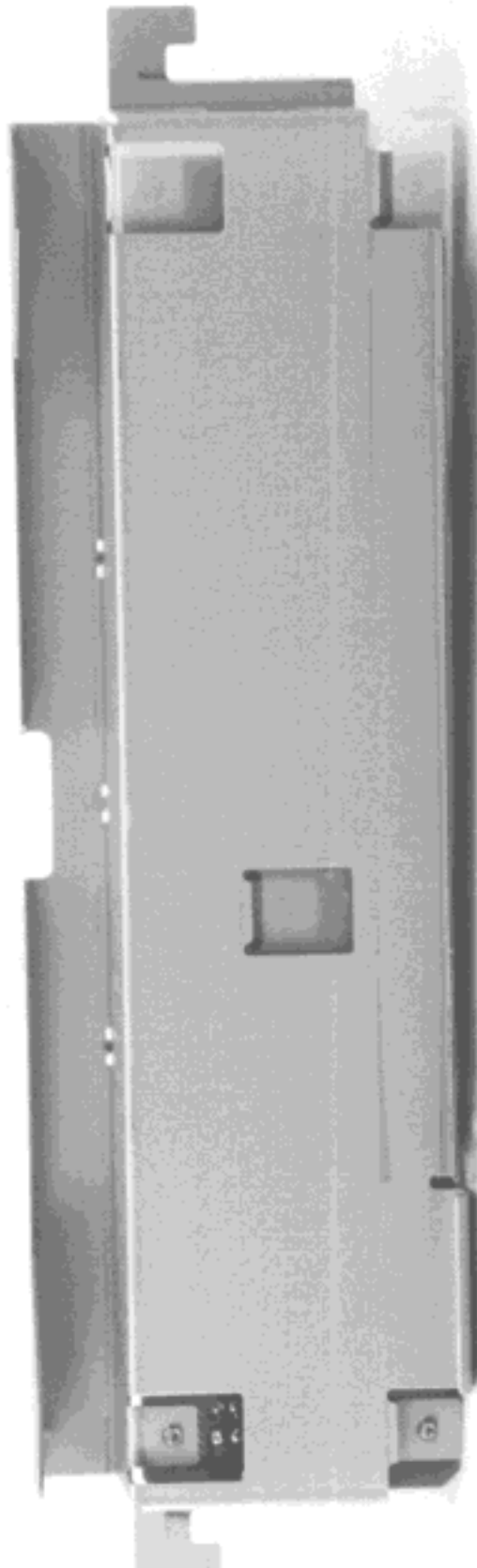


FCC ID : BKMFBG680B

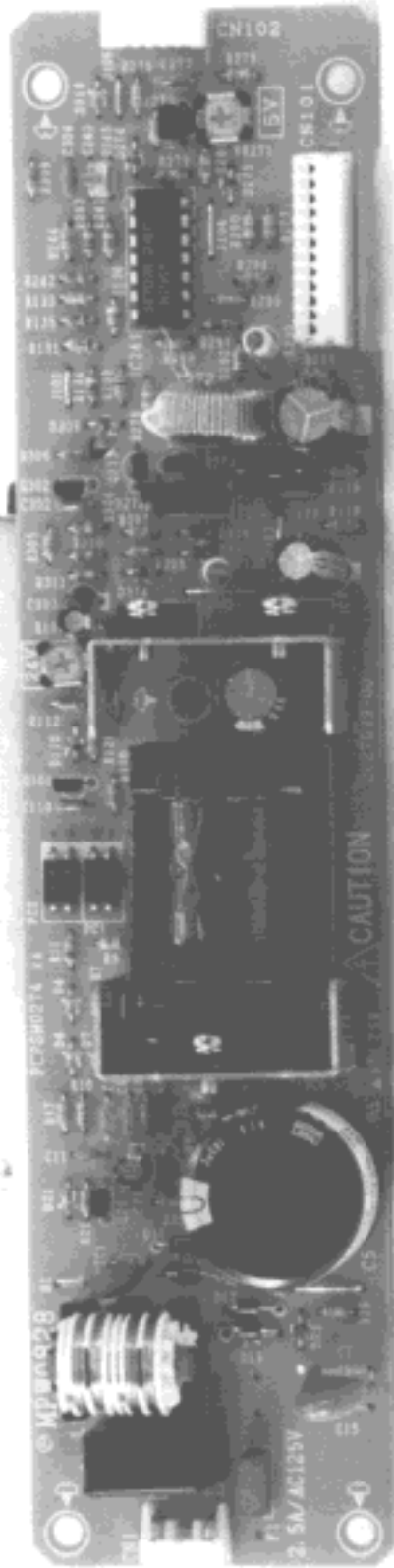
10) Main Board (Reverse)



FCC ID : BKMFBG680B
11) Power Supply Board with steel plate
(Surface)

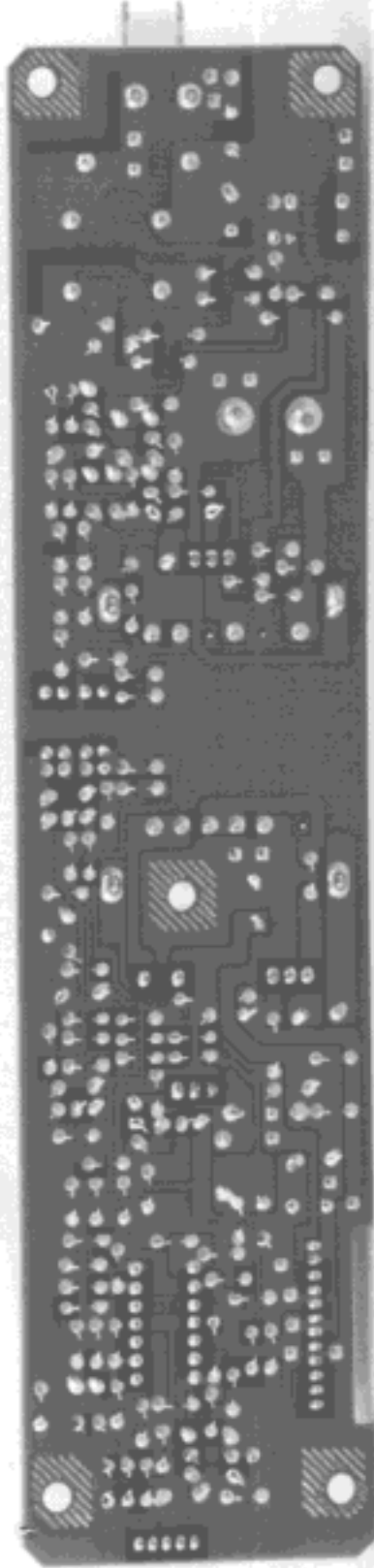


FCC ID : BKMFBG680B
12) Power Supply Board with steel plate
(Reverse)



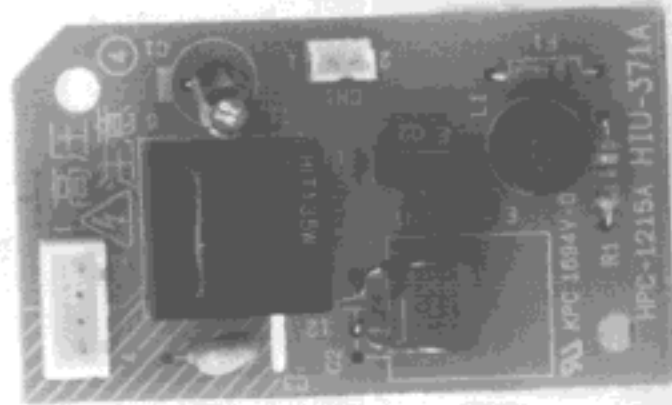
FCC ID : BKMFBG680B

13) Power Supply Board without steel plate
(Surface)



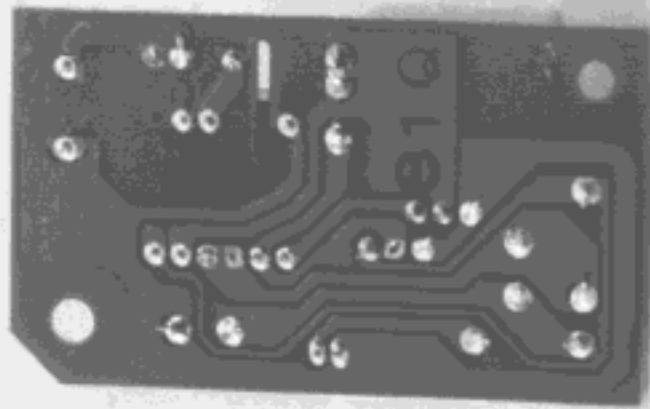
FCC ID : BKMFBG680B

14) Power Supply Board without steel plate
(Reverse)



FCC ID : BKMFBG680B

15) Inverter Board (Surface)

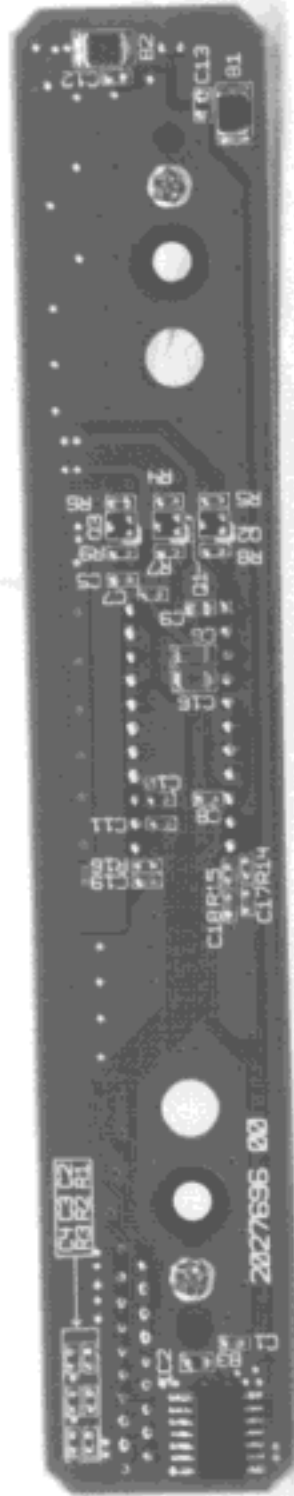


FCC ID : BKMFBG680B

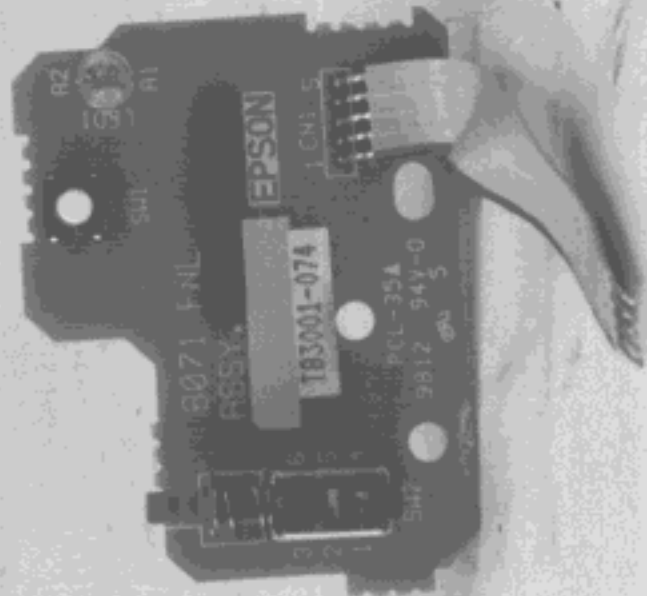
16) Inverter Board (Reverse)



FCC ID : BKMFBG680B
17) CCD Board (Surface)

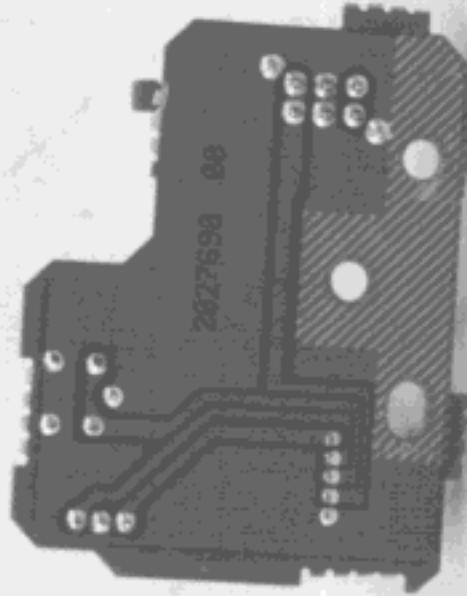


FCC ID : BKMFBG680B
18) CCD Board (Reverse)



FCC ID : BKMFBG680B

19) Operation Panel Board (Surface)

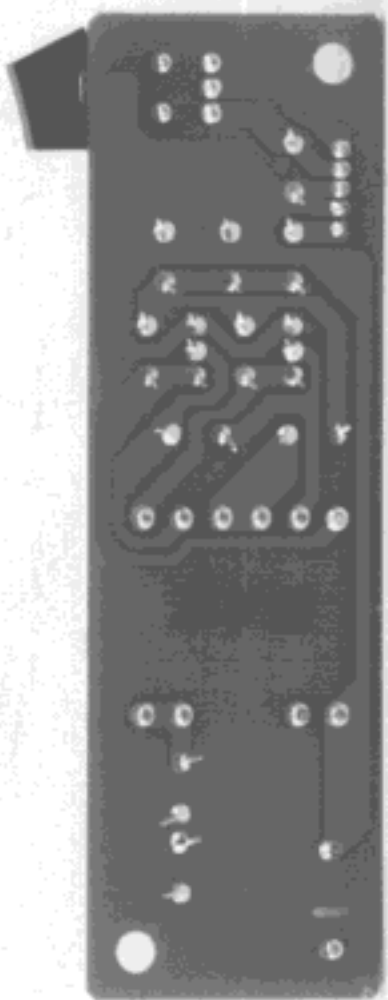


FCC ID : BKMFBG680B

20) Operation Panel Board (Reverse)



FCC ID : BKMFBG680B
22) Optional Film Adapter Main Board (Surface)



FCC ID : BKMPBG680B

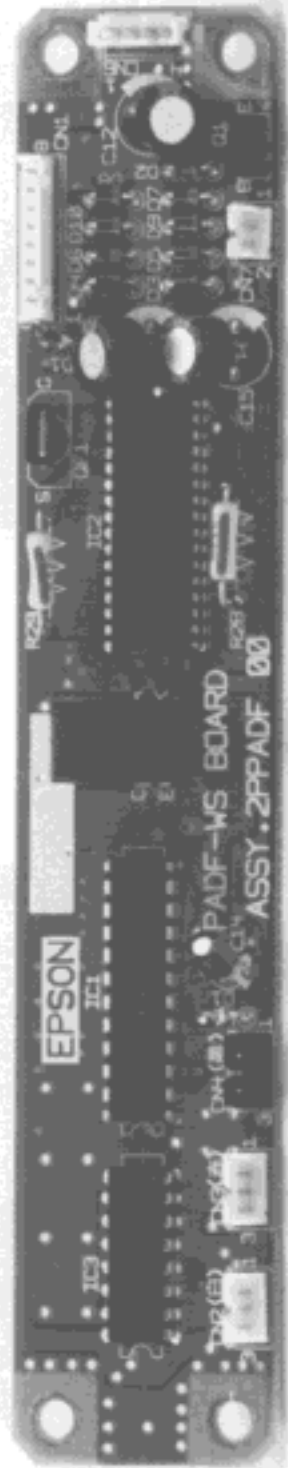
23) Optional Film Adapter Main Board (Reverse)



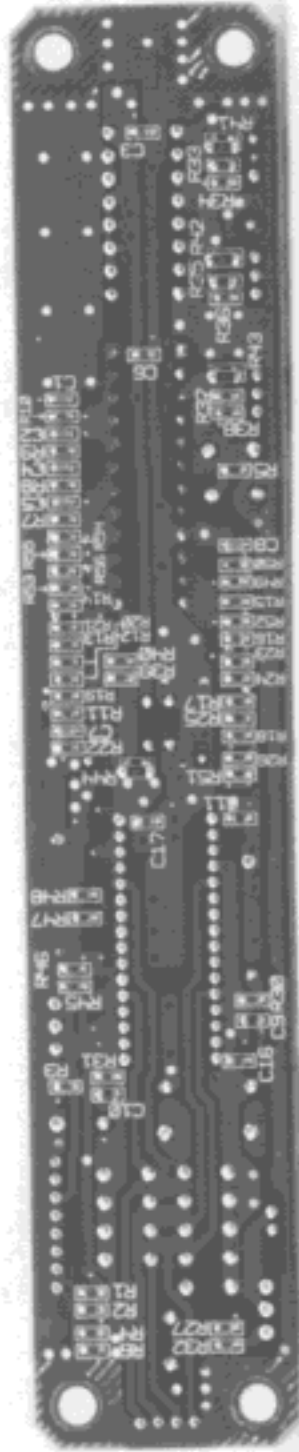
FCC ID : BKMFBG680B

25) Optional Automatic Document Feeder

Inside view



FCC ID : BXMFBG680B
26) Optional Automatic Document Feeder
Main Board (Surface)



FCC ID : BKMFBG680B
27) Optional Automatic Document Feeder
Main Board (Reverse)