

---

**APPENDIX 3: Photographs of test setup**

**Conducted emission**

Front



Side



---

**UL Japan, Inc.**

**Shonan EMC Lab.**

1-22-3 Megumigaoka, Hiratsuka-shi, Kanagawa-ken, 259-1220 JAPAN

Telephone : +81 463 50 6400

Facsimile : +81 463 50 6401

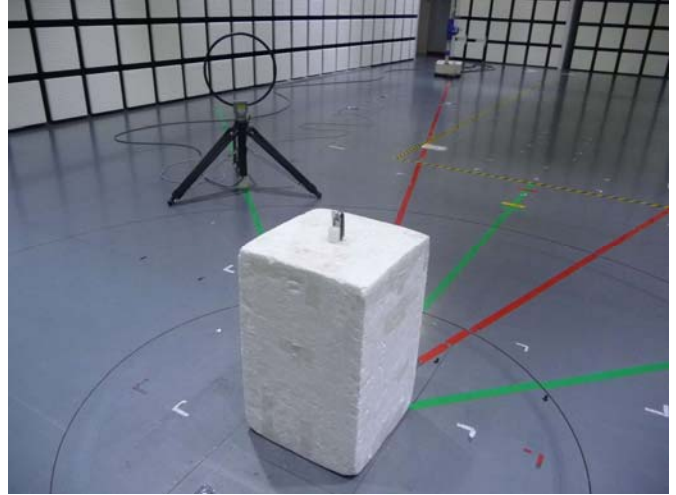
---

**Radiated emission**

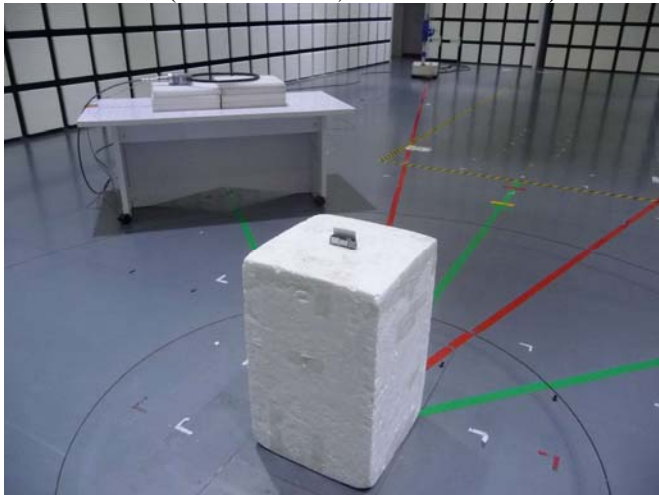
Front



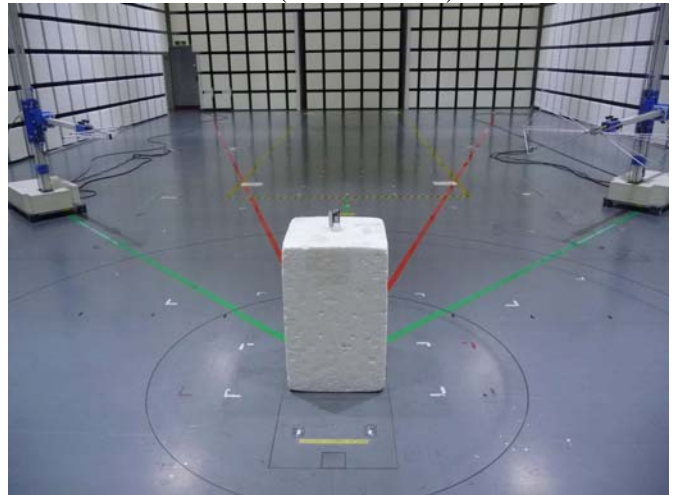
Rear (below 30 MHz, antenna vertical)



Rear (below 30 MHz, antenna horizontal)



Rear (above 30 MHz)



---

**UL Japan, Inc.**

**Shonan EMC Lab.**

1-22-3 Megumigaoka, Hiratsuka-shi, Kanagawa-ken, 259-1220 JAPAN

Telephone : +81 463 50 6400

Facsimile : +81 463 50 6401

---

**Pre-check of Worst Case Position**

(with tag)  
X-axis



(without tag)  
X-axis



Y-axis



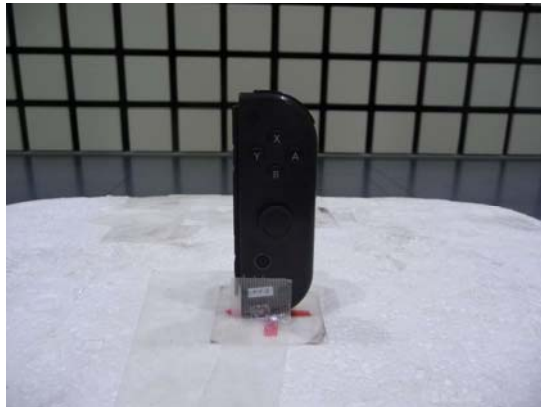
Y-axis



Z-axis



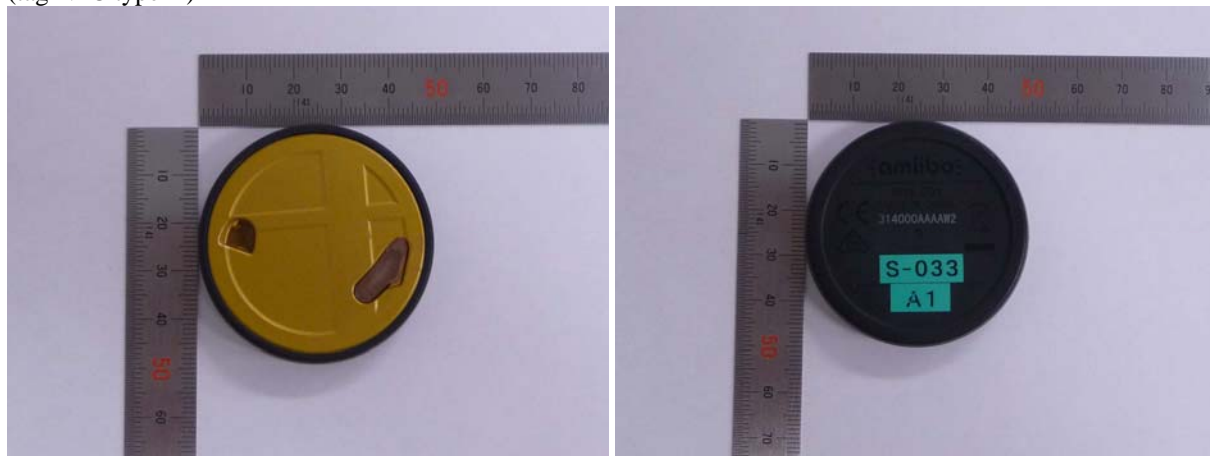
Z-axis



---

**Tag used for the test as representative**

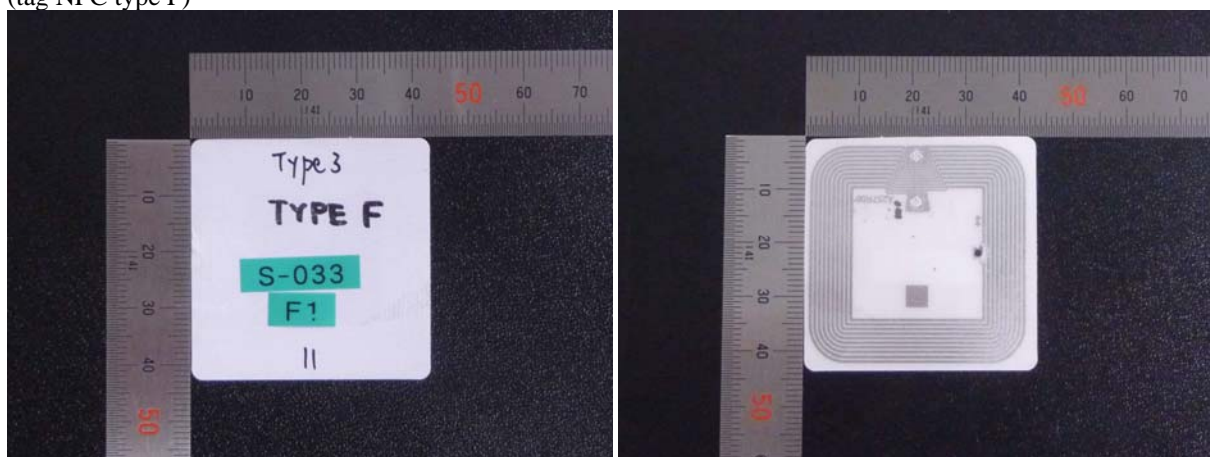
(tag NFC type A)



(tag NFC type B)



(tag NFC type F)



**END OF REPORT**

---

**UL Japan, Inc.**  
**Shonan EMC Lab.**

1-22-3 Megumigaoka, Hiratsuka-shi, Kanagawa-ken, 259-1220 JAPAN

Telephone : +81 463 50 6400

Facsimile : +81 463 50 6401