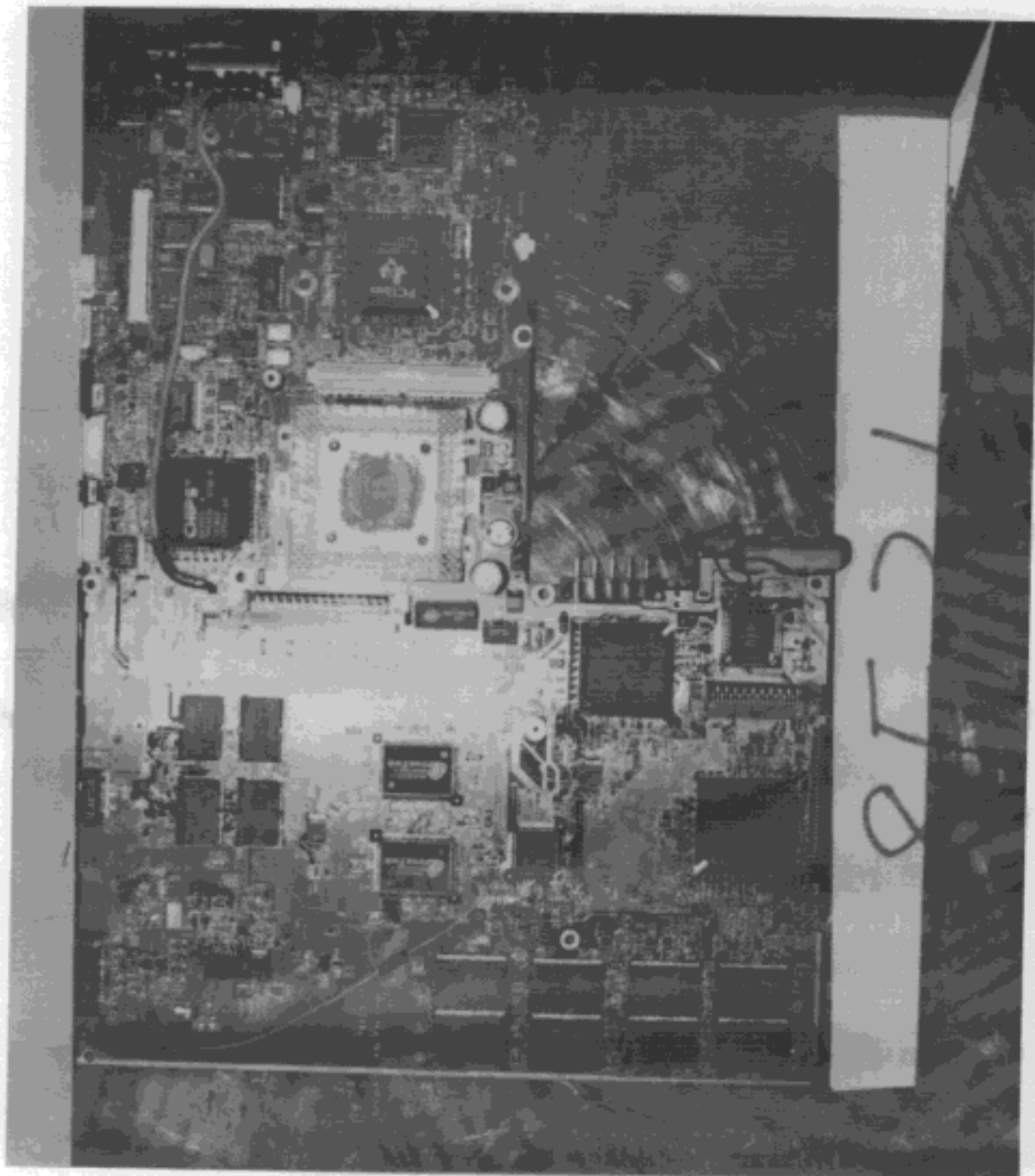
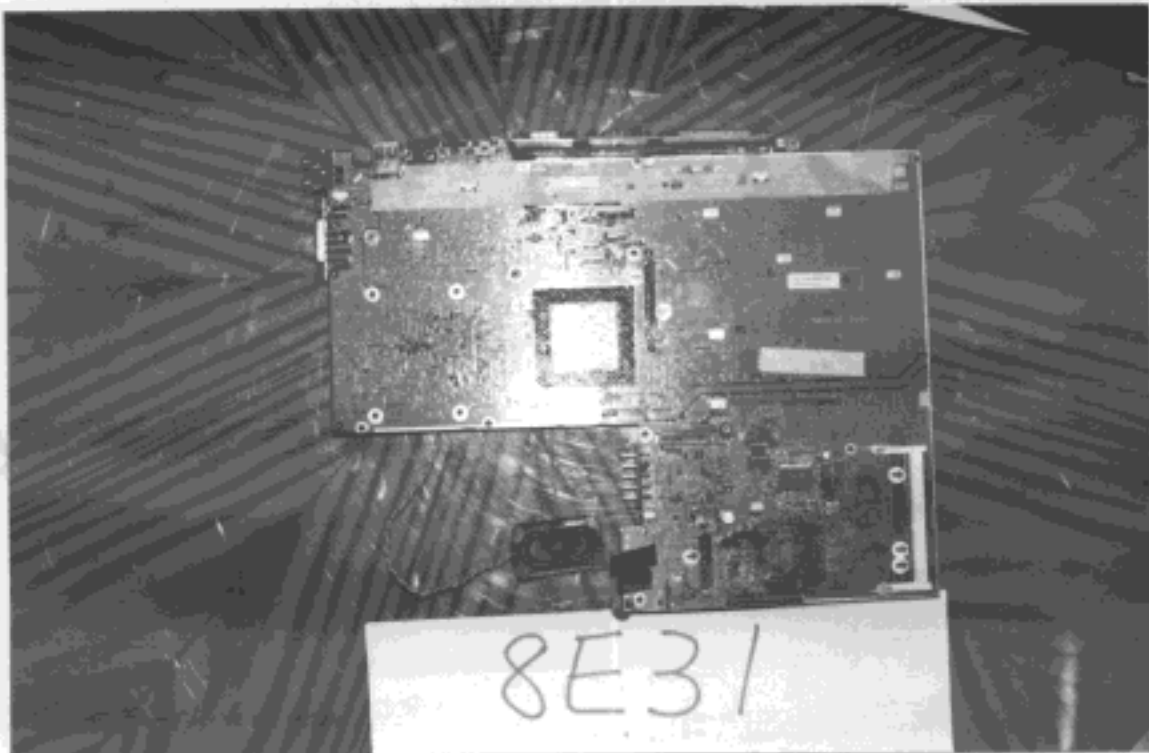
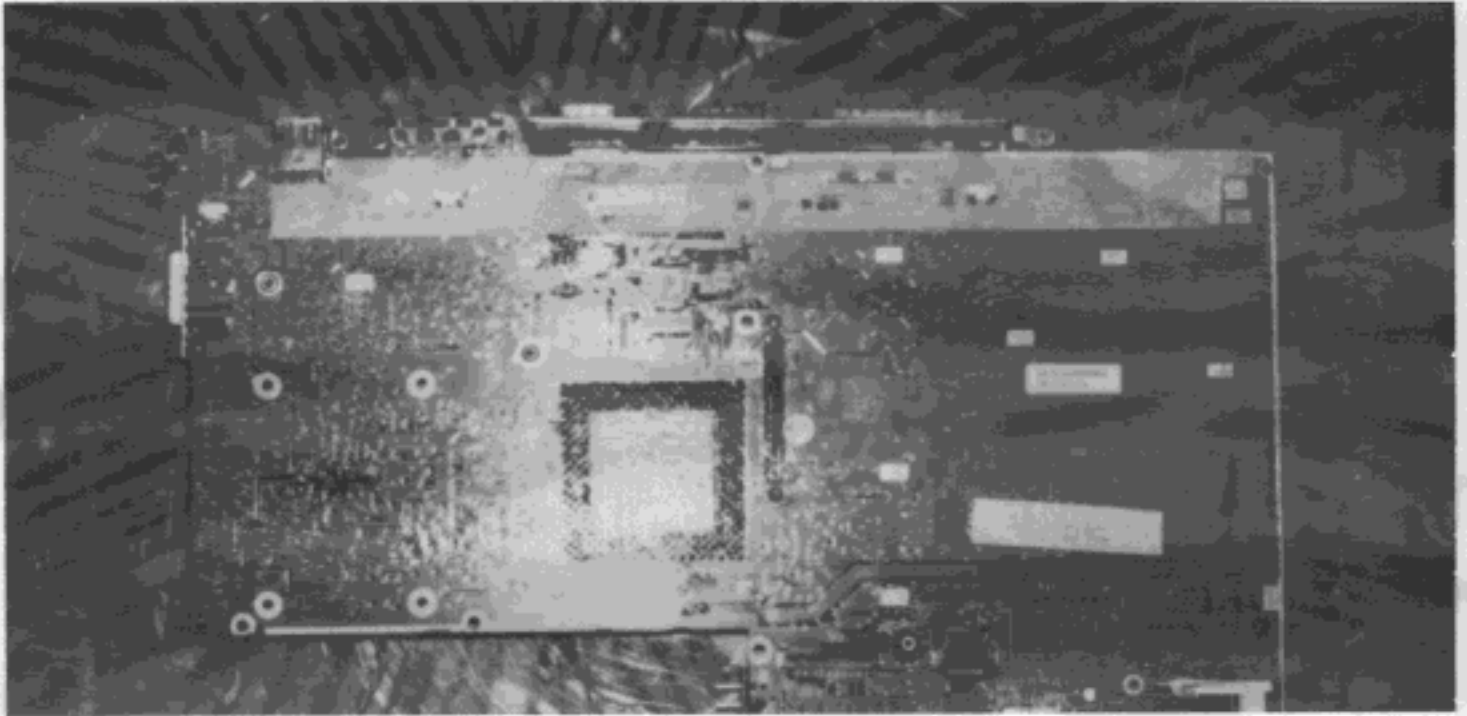


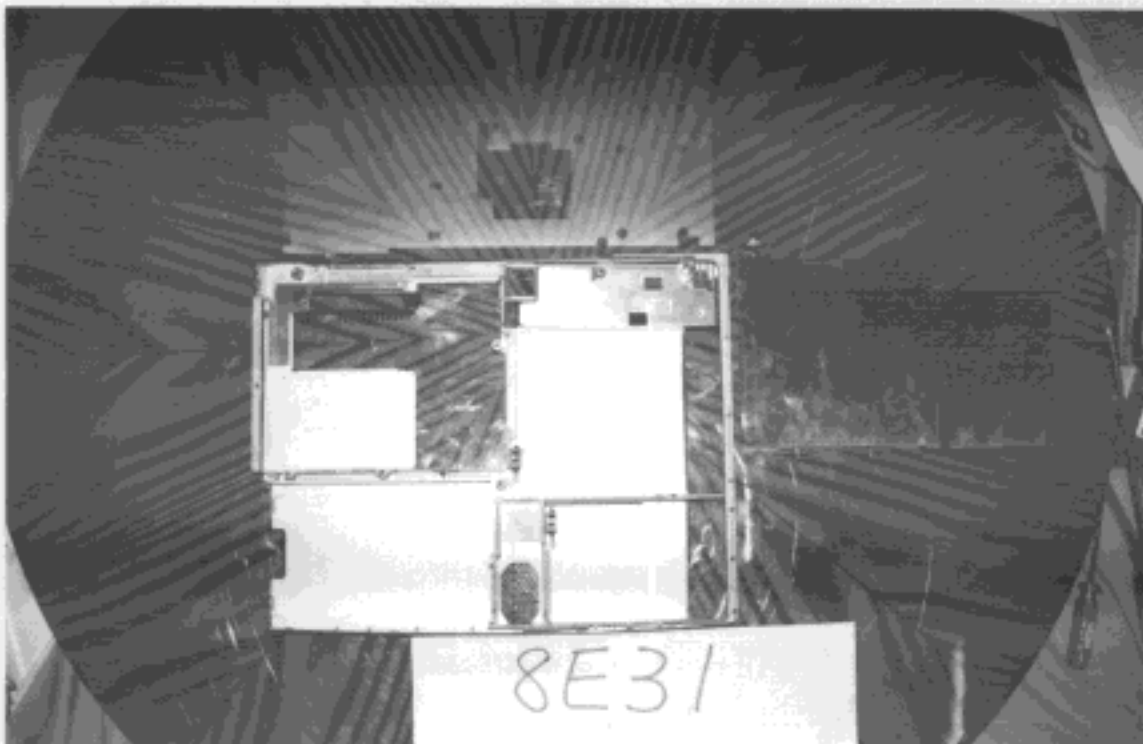
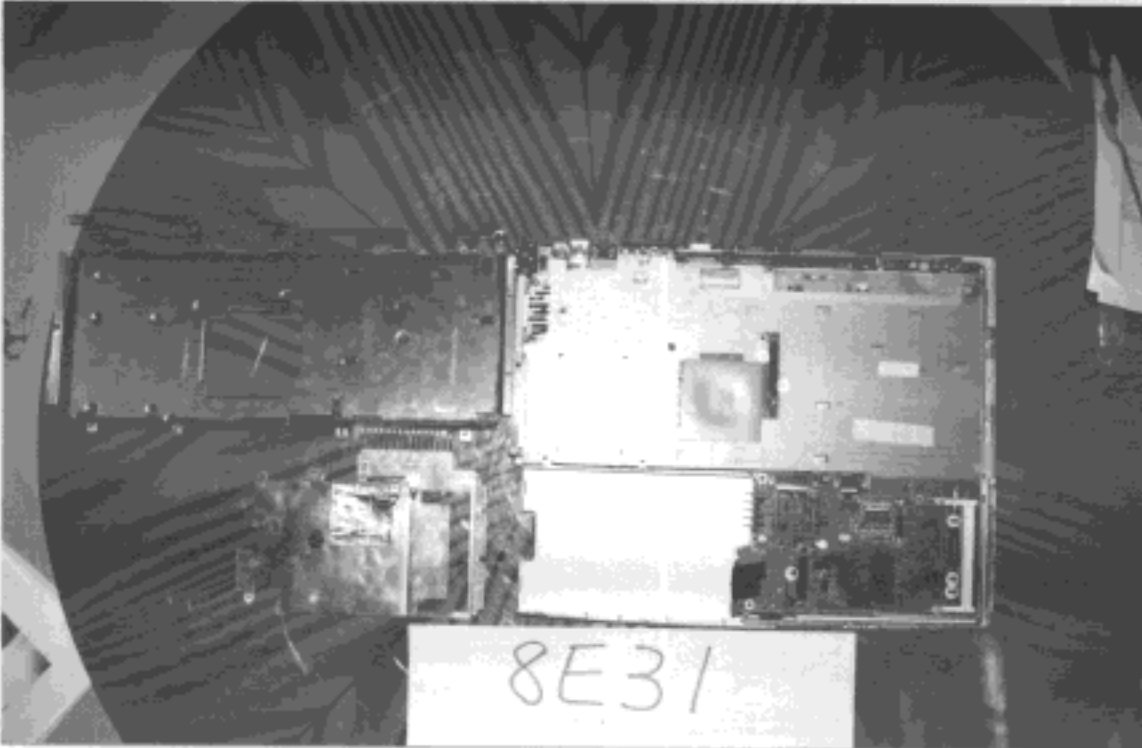
7. PHOTOS OF TESTING  
A. MAIN BOARD COMPONENT SIDE



7. PHOTOS OF TESTING  
B. MAIN BOARD SOLDER SIDE



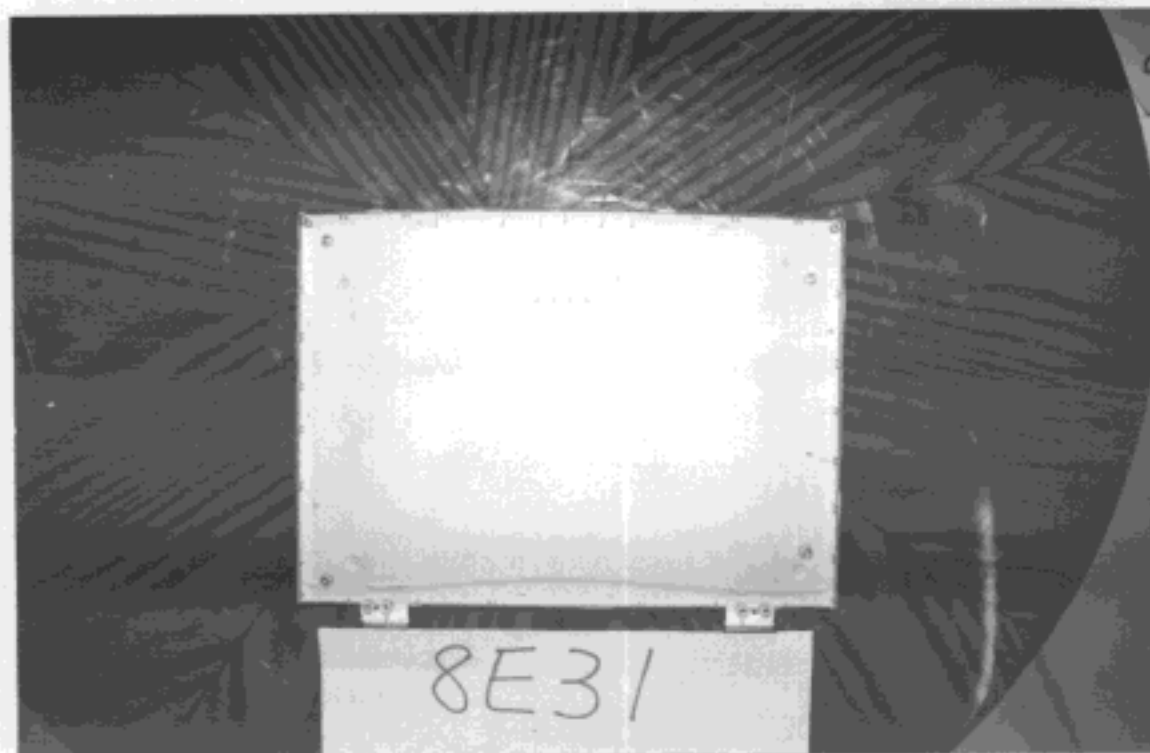
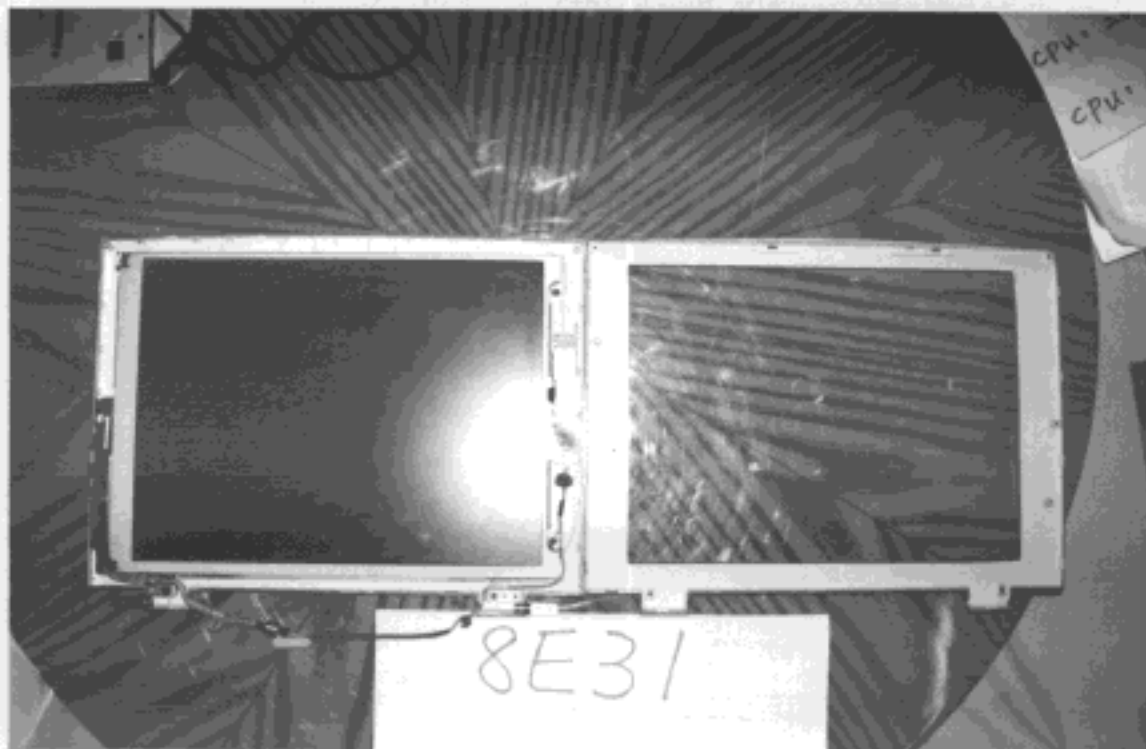
- 7. PHOTOS OF TESTING
- S. EUT INSIDE WHOLE VIEW
- T. EUT CASE INSIDE WHOLE VIEW



7. PHOTOS OF TESTING

W. LCD PANEL INSIDE WHOLE VIEW

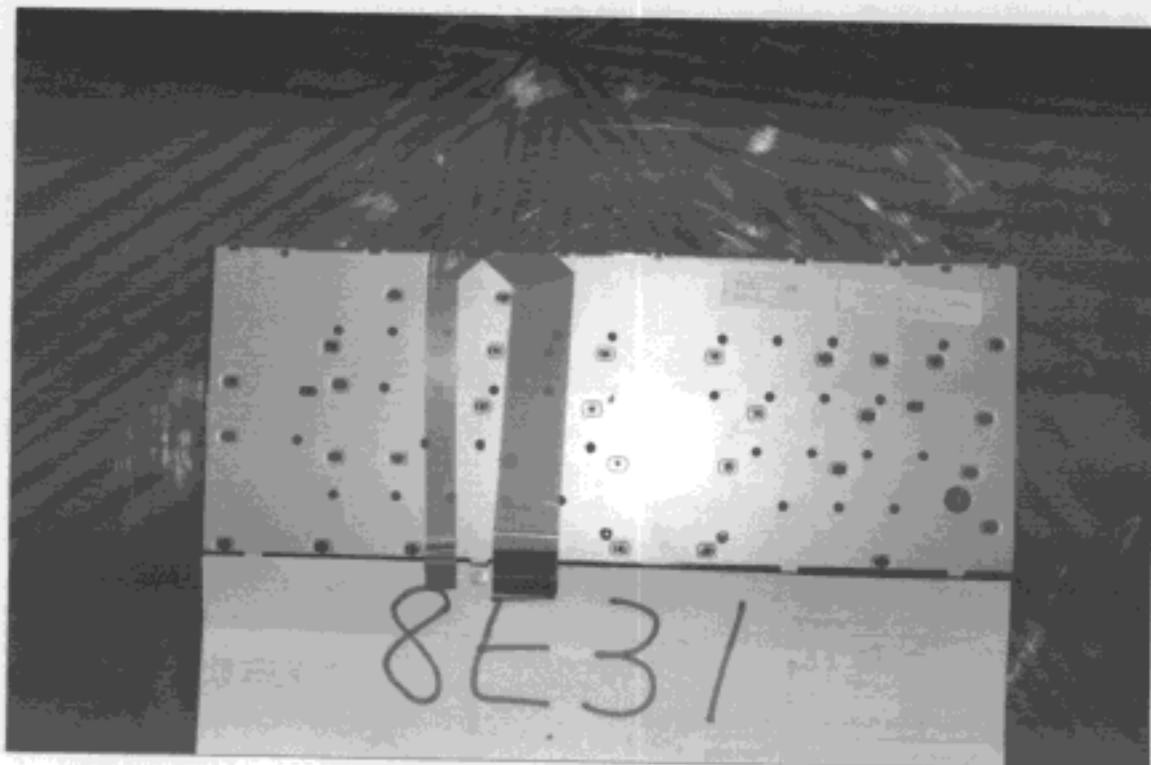
X. LCD PANEL CASE INSIDE WHOLE VIEW



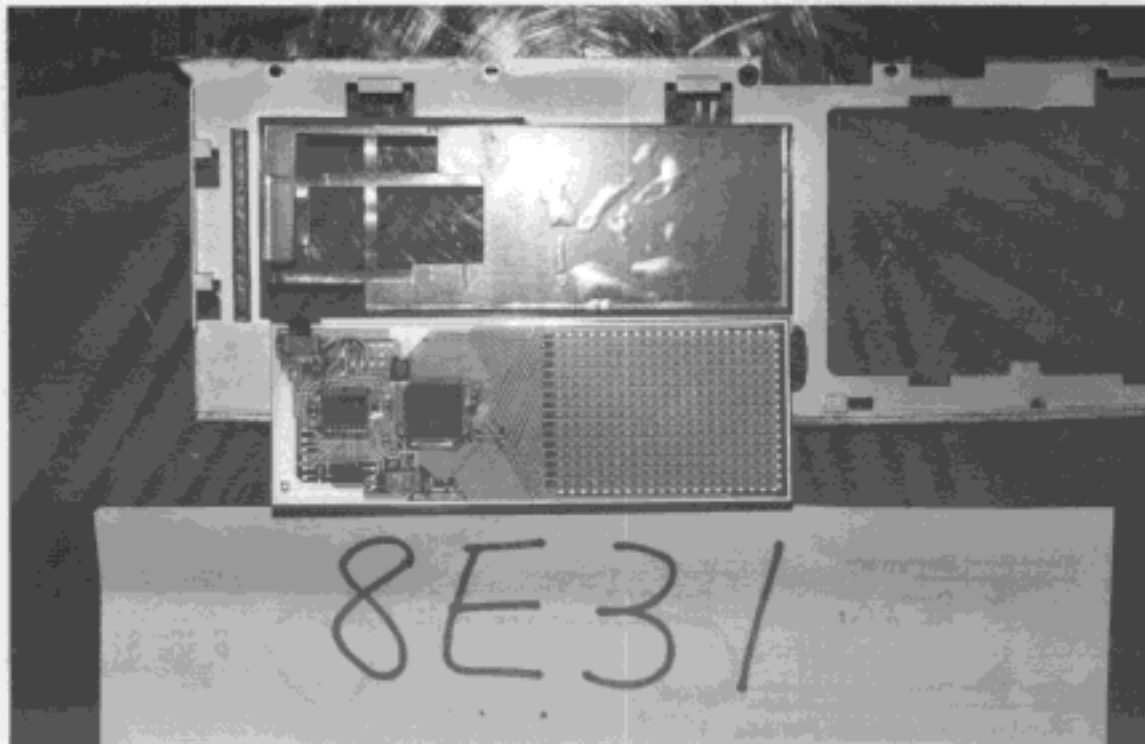
- 7. PHOTOS OF TESTING
- Y. LCD PANEL COMPONENT SIDE
- Z. LCD PANEL SOLDER SIDE



- 7. PHOTOS OF TESTING
- A1. KEYBOARD COMPONENT SIDE
- A2. KEYBOARD SOLDER SIDE



- 7. PHOTOS OF TESTING
- A3. TOUCH PAD COMPONENT SIDE
- A4. TOUCH PAD SOLDER SIDE



7. PHOTOS OF TESTING

A5. FUNCTION DISPLAY LCD & HIGHT VOLTAGE BOARD COMPONENT SIDE

A6. FUNCTION DISPLAY LCD & HIGHT VOLTAGE BOARD SOLDER SIDE

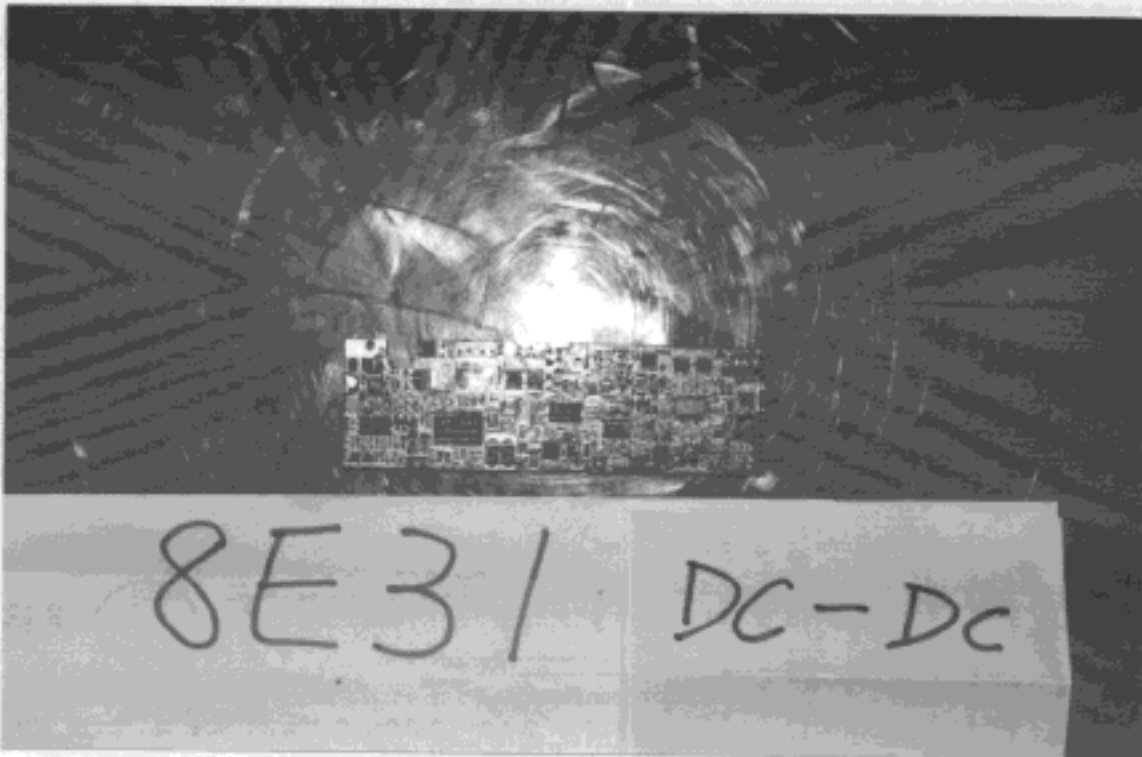




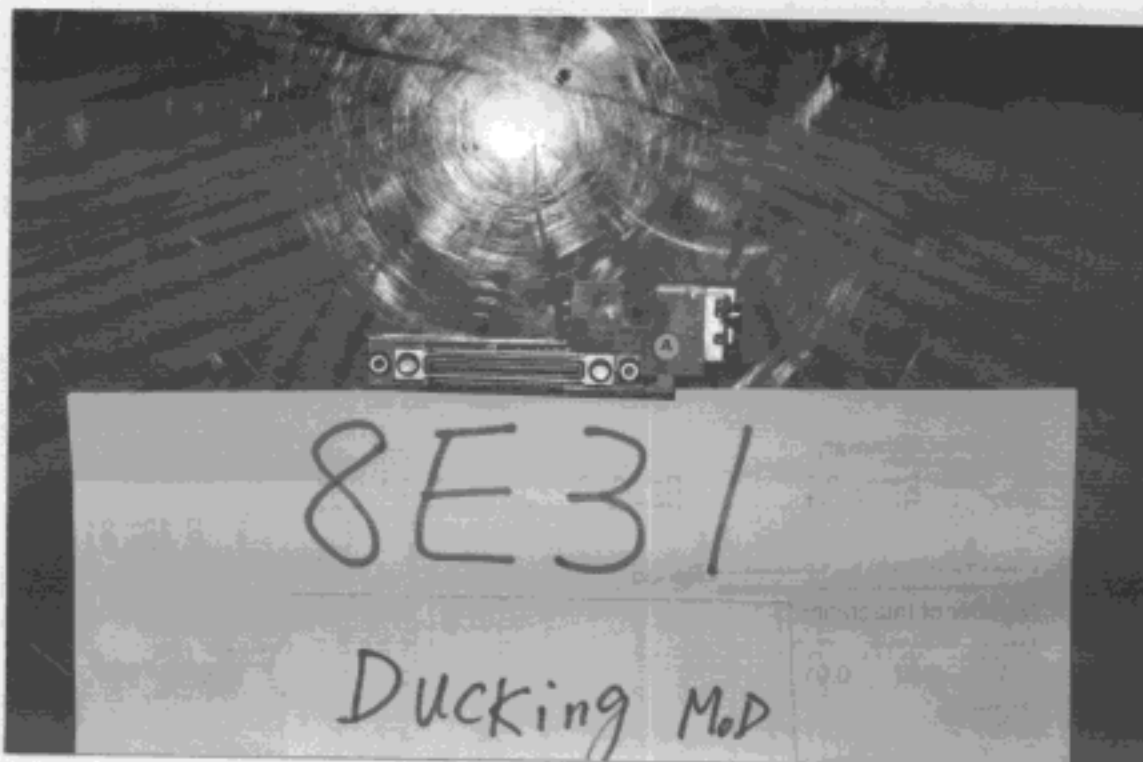
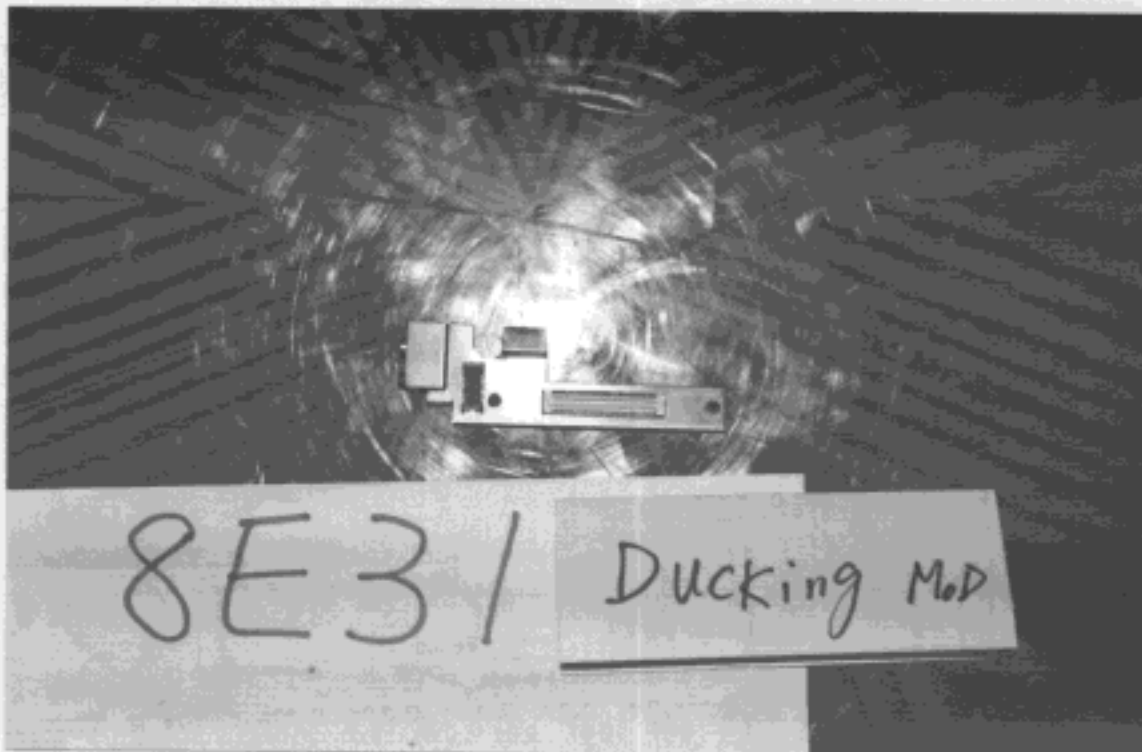
- 7. PHOTOS OF TESTING
- A7. MODEM CARD COMPONENT SIDE
- A8. MODEM CARD SOLDER SIDE



- 7. PHOTOS OF TESTING
  - A9. DC-DC BOARD COMPONENT SIDE
  - A10. DC-DC BOARD SOLDER SIDE



- 7. PHOTOS OF TESTING
- A11. DUCKING MoD COMPONENT SIDE
- A12. DUCKING MoD SOLDER SIDE



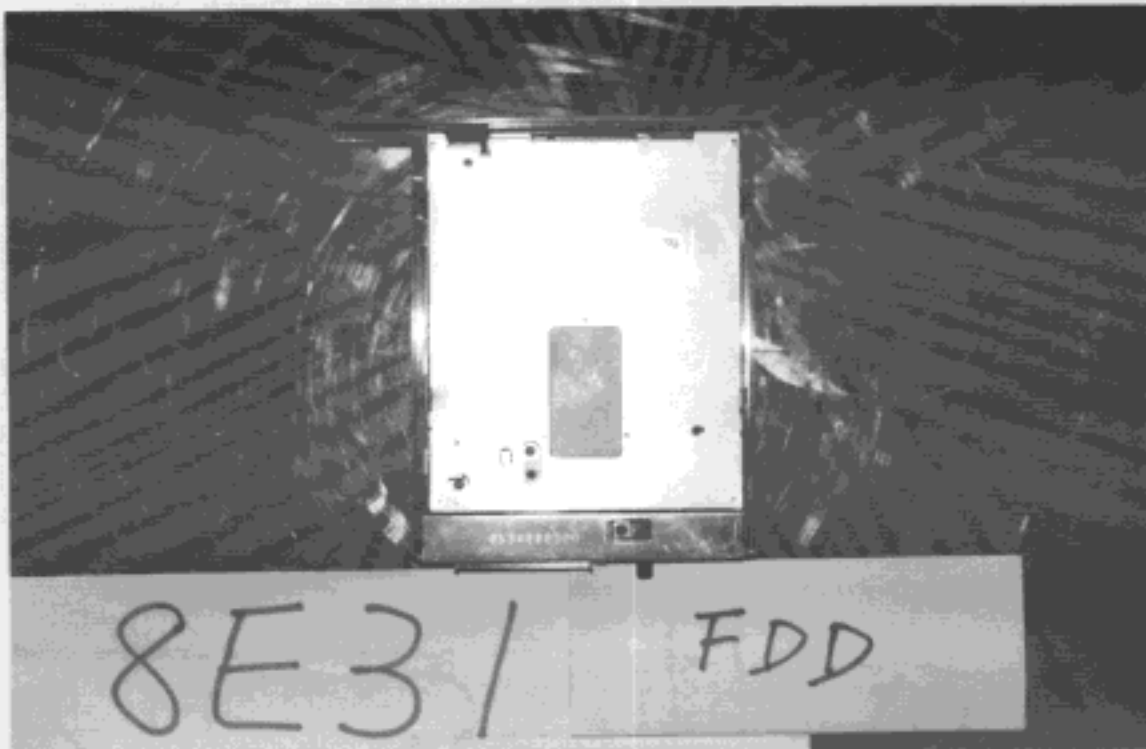
- 7. PHOTOS OF TESTING
- A13. PCMCIA SLOT COMPONENT SIDE
- A14. PCMCIA SLOT SOLDER SIDE



- 7. PHOTOS OF TESTING
- A15. HDD COMPONENT SIDE
- A16. HDD SOLDER SIDE



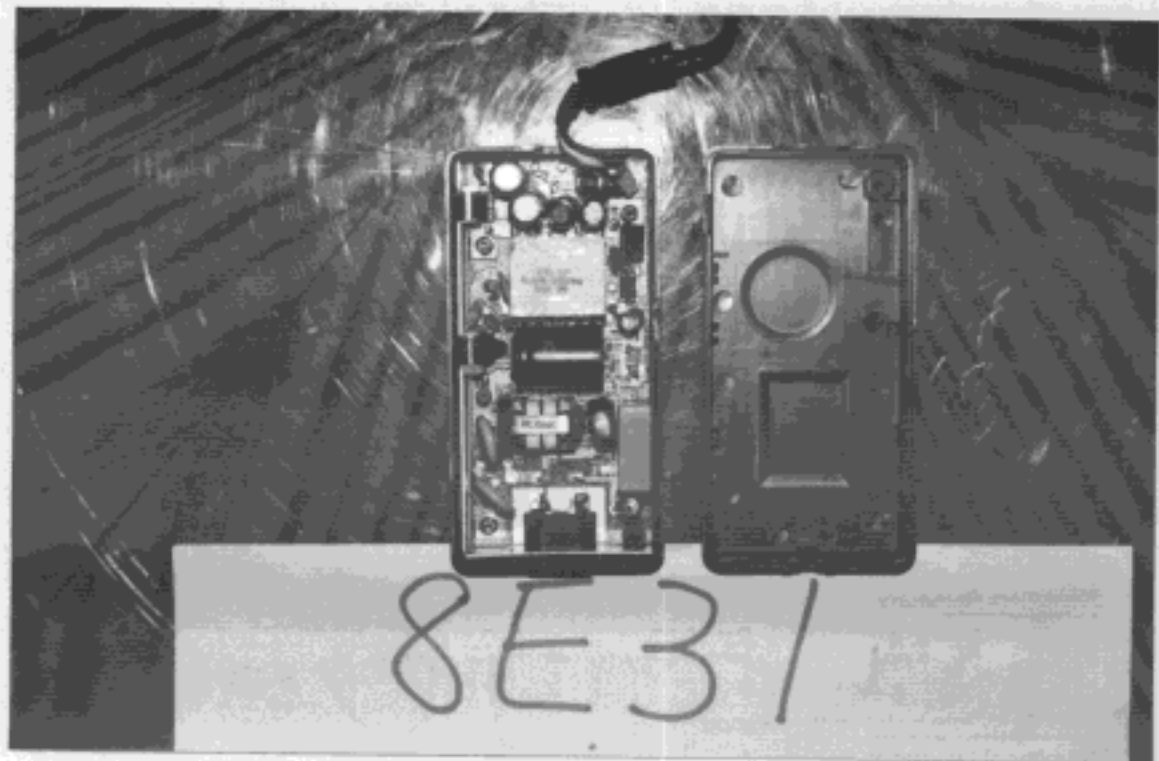
- 7. PHOTOS OF TESTING
- A17. FDD COMPONENT SIDE
- A18. FDD SOLDER SIDE



- 7. PHOTOS OF TESTING
- A19. CD ROM COMPONENT SIDE
- A20. CD ROM SOLDER SIDE



- 7. PHOTOS OF TESTING
- A23. ADAPTOR WHOLE VIEW
- A24. ADAPTOR INSIDE WHOLE VIEW





7. PHOTOS OF TESTING

A25. ADAPTOR BOARD COMPONENT SIDE

A26. ADAPTOR BOARD SOLDER SIDE

