

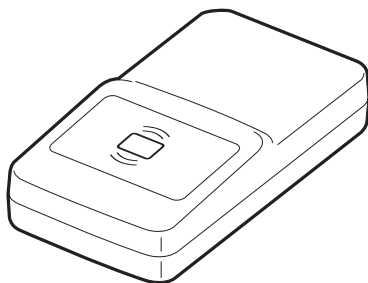
**TOSHIBA**



# User's manual

---

## e-BRIDGE ID Gate



# Contents

---

- Before Getting Started .....3
- Features of e-BRIDGE ID Gate** .....**3**
- Safety Precautions .....3
- How to use e-Bridge ID Gate.....5
- Regulatory Compliance** .....**6**

---

---

## **Before Getting Started**

This User's Manual explains in correct use of e-BRIDGE ID Gate. Be sure to read this User's Manual before trying to use it for the first time.

## **Features of e-BRIDGE ID Gate**









This product is IC card reader that can read the contactless IC card using MIFARE technology from Royal Philips Electronics. It is attested to the server only by bringing the registered correct IC card close to the reader, and using the Toshiba compound machine becomes possible.

## **Safety Precautions**

Please read the following Safety Precautions before start-up to prevent any damages of harm and the property to one and other people who use this product. The User's Manual describes an important content to use it safely and correctly.


## **Markings and Symbols**

The following are the meanings of the markings and symbols used in these Safety Precautions.

 <b>Warning</b>	This symbol indicates information that, if ignored or applied incorrectly, creates the possibility of death or serious personal injury.
 <b>Caution</b>	This symbol indicates information that, if ignored or applied incorrectly, creates the possibility of personal injury or property damage.
The right picture sign shows the prohibited matter not done.	<div style="display: flex; justify-content: space-around; align-items: center;"> <div style="text-align: center;">             Prohibition         </div> <div style="text-align: center;">             Don't touch         </div> <div style="text-align: center;">             Don't touch by wet hand         </div> <div style="text-align: center;">             Don't Disassembly and Modification         </div> </div>
The right picture sign shows the compulsion matter	<div style="display: flex; justify-content: space-around; align-items: center;"> <div style="text-align: center;">             Enforcement         </div> <div style="text-align: center;">             you should unplug the unit from the wall outlet.         </div> </div>



## Warning

 <p>Don't Disassembly and Modification</p>	<p>Never try to disassemble, modify or repair the e-BRIDGE ID Gate in any way. High voltage inside creates the danger of electric shock.</p>
-----------------------------------------------------------------------------------------------------------------------------	----------------------------------------------------------------------------------------------------------------------------------------------



## Caution

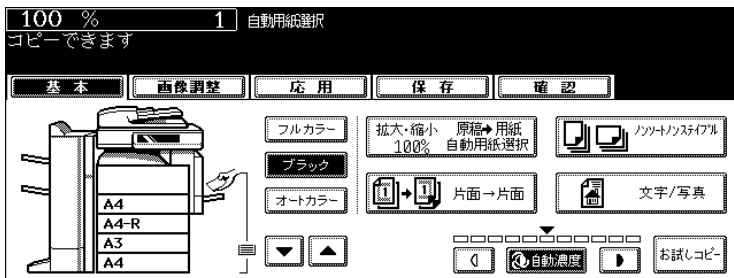
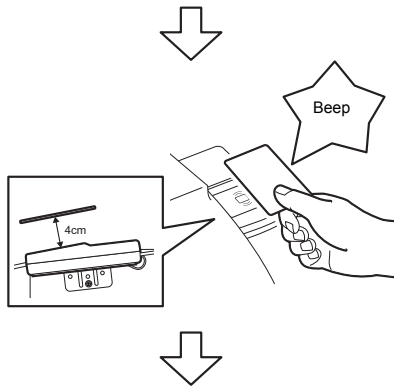
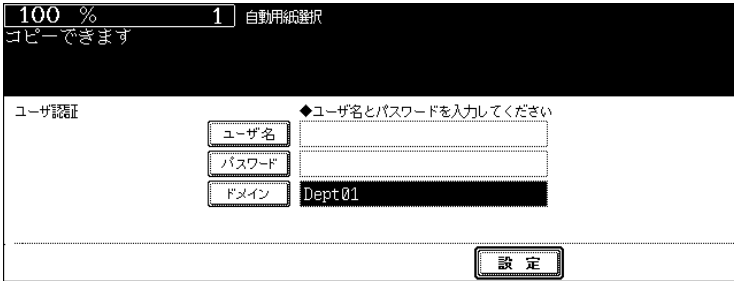
<ul style="list-style-type: none"> <li>● Don't remodel of this product. Toshiba TEC don't assume te responsibility for such remodel.</li> </ul>
<ul style="list-style-type: none"> <li>● Never place objects on top of e-BRIDGE ID Gate. It may cause damages.</li> </ul>
<ul style="list-style-type: none"> <li>● Don't use or storage e-BRIDGE ID Gate at extreme heat or extreme cold, or the place where temperature change is extreme</li> </ul>
<ul style="list-style-type: none"> <li>● Don't use or storage e-BRIDGE ID Gate at the place where in sunlight directly or near apparatus generate heat such as stove etc.</li> </ul>
<ul style="list-style-type: none"> <li>● Don't use or storage e-BRIDGE ID Gate in an area subject to large amounts of humidity or dust</li> </ul>
<ul style="list-style-type: none"> <li>● e-BRIDGE ID Gate consists of precise electronic parts, therefore, don't use or storage in an area where the impact and the vibration join.</li> </ul>
<ul style="list-style-type: none"> <li>● Don't use e-BRIDGE ID Gate at near the equipment that generates a strong magnetic field or radio wave.</li> </ul>
<ul style="list-style-type: none"> <li>● Please pull out the power cable at once when you notice an abnormal smell and overheating.</li> </ul>
<ul style="list-style-type: none"> <li>● Please contact our shop or the service engineer when abnormality and the breakdown occur.</li> </ul>
<p>e-BRIDGE is RFID Reader operating in 13.56MHz. In case of using two or more reader/writers around e-BRIDGE ID gate, please leave space by more than 1m. Moreover, please confirm that it is not to be near the wireless products operating in 13.56MHz.</p>

MIFARE is a contactless IC card technology developed by Royal Philips Electronics.

MIFARE is a trademark of Royal Philips Electronics.

# How to use e-BRIDGE ID Gate

Please bring IC card close to e-BRIDGE ID Gate. Beep is heard, and then Toshiba TEC MFP is available to use.



# Regulatory Compliance

## **a. FCC portion**

This equipment has been tested and found to comply with the limits for a Class A digital device, pursuant to part 15 of the FCC Rules. These limits are designed to provide reasonable protection against harmful interference when the equipment is operated in a commercial environment. This equipment generates, uses, and can radiate radio frequency energy and, if not installed and used in accordance with the instruction manual, may cause harmful interference to radio communications. Operation of this equipment in a residential area is likely to cause harmful interference in which case the user will be required to correct the interference at his own expense.

This device complies with Part 15 of the FCC Rules. Operation is subject to the following two conditions: (1) This device may not cause harmful interference, and (2) This device must accept any interference received, including interference that may cause undesired operation.

### **Caution:**

Any changes or modifications not expressly approved by the party responsible for product compliance could void the user's authority to operate the equipment.

## **b. Industry Canada Portion**

### **Canada Regulatory Compliance Statement**

**This Class A digital apparatus complies with Canadian ICES-003.**

*Cet appareil numérisé de la classe A est conforme à la norme NMB-003 du Canada.*

### **For Customers in Canada**

This device complies with RSS 210 of Industry Canada (IC).

Operation is subject to the following two conditions:

- (1) this device may not cause interference, and
- (2) this device must accept any interference, including interference that may cause undesired operation of this device.

L' utilisation de ce dispositif est autorisée seulement aux conditions suivantes :

- (1) il ne doit pas produire de brouillage et
- (2) l' utilisateur du dispositif doit être prêt à accepter tout brouillage radioélectrique reçu, même si ce brouillage est susceptible de compromettre le fonctionnement du dispositif.

## c. EU Portion

### European Community Declaration of Conformity with Regard to the R&TTE Directive 1999/5/EC

The following standards were applied: (R&TTE Directive 1999/5/EEC)

- EN 301 489-1 V1.4.1 (2002-08) & EN 301 489-3 V1.4.1 (2002-08)
- EN 300 330-2 V1.3.1 (2006-04)
- EN 60950-1: 2001

The following CE mark is affixed to the device:


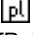






### Declaration of Conformity with Regard to the R&TTE Directive 1999/5/EC

Hereby, Toshiba TEC Corporation Corporation declares that this KP-2005 is in compliance with the essential requirements and other relevant provisions of Directive 1999/5/EC.

Český [Czech]	<i>Toshiba TEC Corporation</i> tímto prohlašuje, že tento KP-2005 je ve shodě se základními požadavky a dalšími příslušnými ustanoveními směrnice 1999/5/ES.
Dansk [Danish]	Undertegnede <i>Toshiba TEC Corporation</i> erklærer herved, at følgende udstyr KP-2005 overholder de væsentlige krav og øvrige relevante krav i direktiv 1999/5/EF.
Deutsch [German]	Hiermit erklärt <i>Toshiba TEC Corporation</i> dass sich das Gerät KP-2005 in Übereinstimmung mit den grundlegenden Anforderungen und den übrigen einschlägigen Bestimmungen der Richtlinie 1999/5/EG befindet.
Eesti [Estonian]	Käesolevaga kinnitab <i>Toshiba TEC Corporation</i> seadme KP-2005 vastavust direktiivi 1999/5/EÜ põhinõuetele ja nimetatud direktiivist tulenevatele teistele asjakohastele sätetele.
Español [Spanish]	Por medio de la presente <i>Toshiba TEC Corporation</i> declara que el KP-2005 cumple con los requisitos esenciales y cualesquiera otras disposiciones aplicables o exigibles de la Directiva 1999/5/CE.
Ελληνική [Greek]	ΜΕ ΤΗΝ ΠΑΡΟΥΣΑ <i>Toshiba TEC Corporation</i> ΔΗΛΩΝΕΙ ΟΤΙ ΚΡ-2005 ΣΥΜΜΟΡΦΩΝΕΤΑΙ ΠΡΟΣ ΤΙΣ ΟΥΣΙΩΔΕΙΣ ΑΠΑΙΤΗΣΕΙΣ ΚΑΙ ΤΙΣ ΛΟΙΠΕΣ ΣΧΕΤΙΚΕΣ ΔΙΑΤΑΞΕΙΣ ΤΗΣ ΟΔΗΓΙΑΣ 1999/5/ΕΚ.
Français [French]	Par la présente <i>Toshiba TEC Corporation</i> déclare que l'appareil KP-2005 est conforme aux exigences essentielles et aux autres dispositions pertinentes de la directive 1999/5/CE.
Italiano [Italian]	Con la presente <i>Toshiba TEC Corporation</i> dichiara che questo KP-2005 è conforme ai requisiti essenziali ed alle altre disposizioni pertinenti stabilite dalla direttiva 1999/5/CE.
Latviski [Latvian]	Ar šo <i>Toshiba TEC Corporation</i> deklarē, ka KP-2005 atbilst Direktīvas 1999/5/EK būtiskajām prasībām un citiem ar to saistītajiem noteikumiem.
Lietuvių [Lithuanian]	Šiuo <i>Toshiba TEC Corporation</i> deklaruoja, kad šis KP-2005 atitinka esminius reikalavimus ir kitas 1999/5/EB Direktyvos nuostatas.
Nederlands [Dutch]	Hierbij verklaart <i>Toshiba TEC Corporation</i> dat het toestel KP-2005 in overeenstemming is met de essentiële eisen en de andere relevante bepalingen van richtlijn 1999/5/EG.
Malti [Maltese]	Hawnhekk, <i>Toshiba TEC Corporation</i> , jiddikjara li dan KP-2005 jikkonforma mal-ftiġġijiet essenzjali u ma provvedimenti oħrajn relevanti li hemm fid-Direttiva 1999/5/EC.



<p> Magyar [Hungarian]</p>	<p>Alulírott, <i>Toshiba TEC Corporation</i> nyilatkozom, hogy a <i>KP-2005</i> megfelel a vonatkozó alapvető követelményeknek és az 1999/5/EC irányelv egyéb előírásainak.</p>
<p> Polski [Polish]</p>	<p>Niniejszym, <i>Toshiba TEC Corporation</i>, deklaruję, że <i>KP-2005</i> spełnia wymagania zasadnicze oraz stosowne postanowienia zawarte Dyrektywie 1999/5/EC.</p>
<p> Português [Portuguese]</p>	<p><i>Toshiba TEC Corporation</i> declara que este <i>KP-2005</i> está conforme com os requisitos essenciais e outras disposições da Directiva 1999/5/CE.</p>
<p> Slovensko [Slovenian]</p>	<p><i>Toshiba TEC Corporation</i> izjavlja, da je ta <i>KP-2005</i> v skladu z bistvenimi zahtevami in ostalimi relevantnimi določili direktive 1999/5/ES.</p>
<p>Slovensky [Slovak]</p>	<p><i>Toshiba TEC Corporation</i> týmto vyhlasuje, že <i>KP-2005</i> spĺňa základné požiadavky a všetky príslušné ustanovenia Smernice 1999/5/ES.</p>
<p> Suomi [Finnish]</p>	<p><i>Toshiba TEC Corporation</i> vakuuttaa täten että <i>KP-2005</i> tyyppinen laite on direktiivin 1999/5/EY oleellisten vaatimusten ja sitä koskevien direktiivin muiden ehtojen mukainen.</p>
<p> Svenska [Swedish]</p>	<p>Härmed intygar <i>Toshiba TEC Corporation</i> att denna <i>KP-2005</i> står i överensstämmelse med de väsentliga egenskapskrav och övriga relevanta bestämmelser som framgår av direktiv 1999/5/EG.</p>