

hp

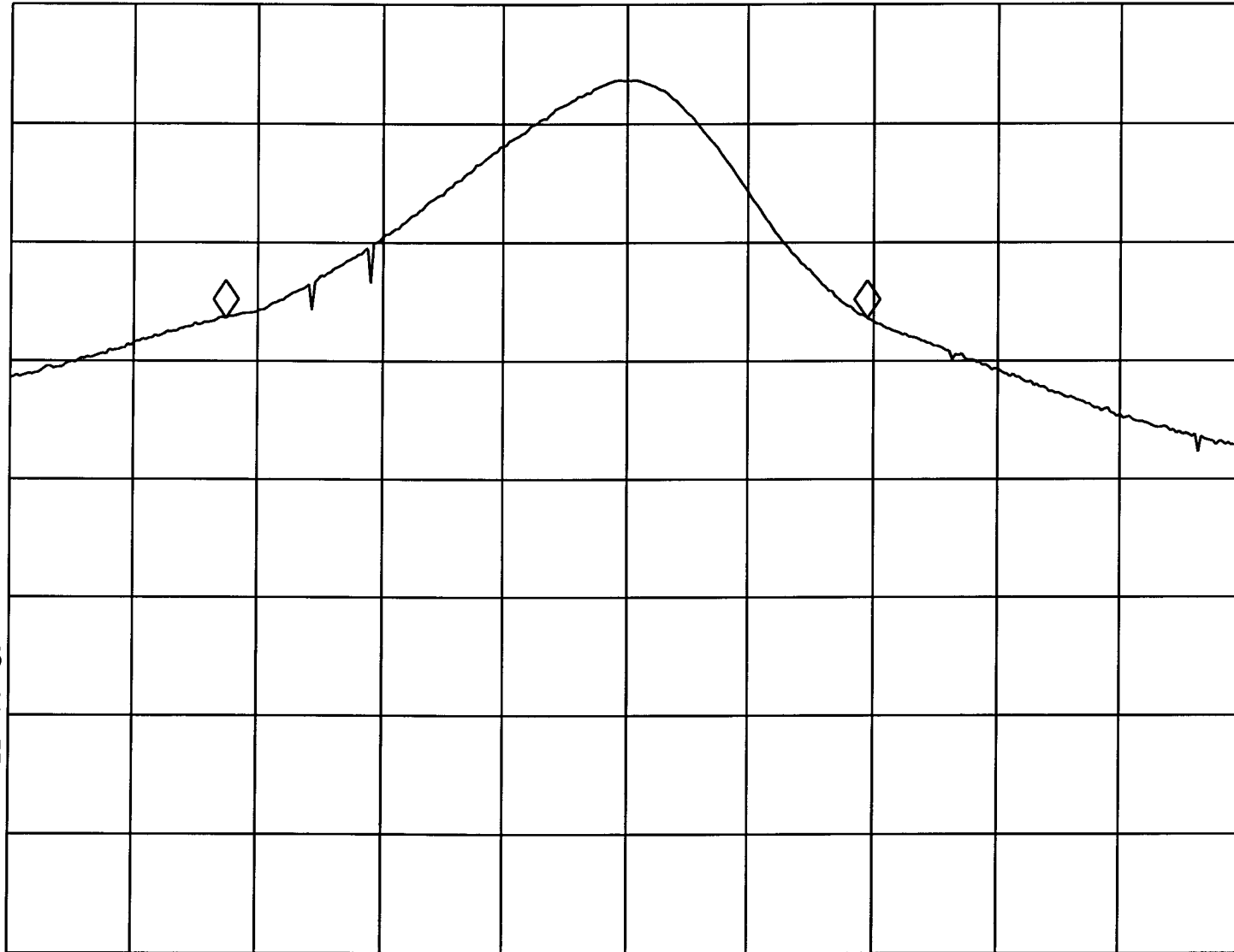
MKR 520 kHz

REF -20.0 dBm

AT 10 dB

-.02 dB

PEAK
LOG
10
dB/



VA SB
SC FC
CORR

CENTER 433.863 MHz

SPAN 1.000 MHz

#RES BW 100 kHz

#VBW 100 kHz

SWP 20.0 msec