





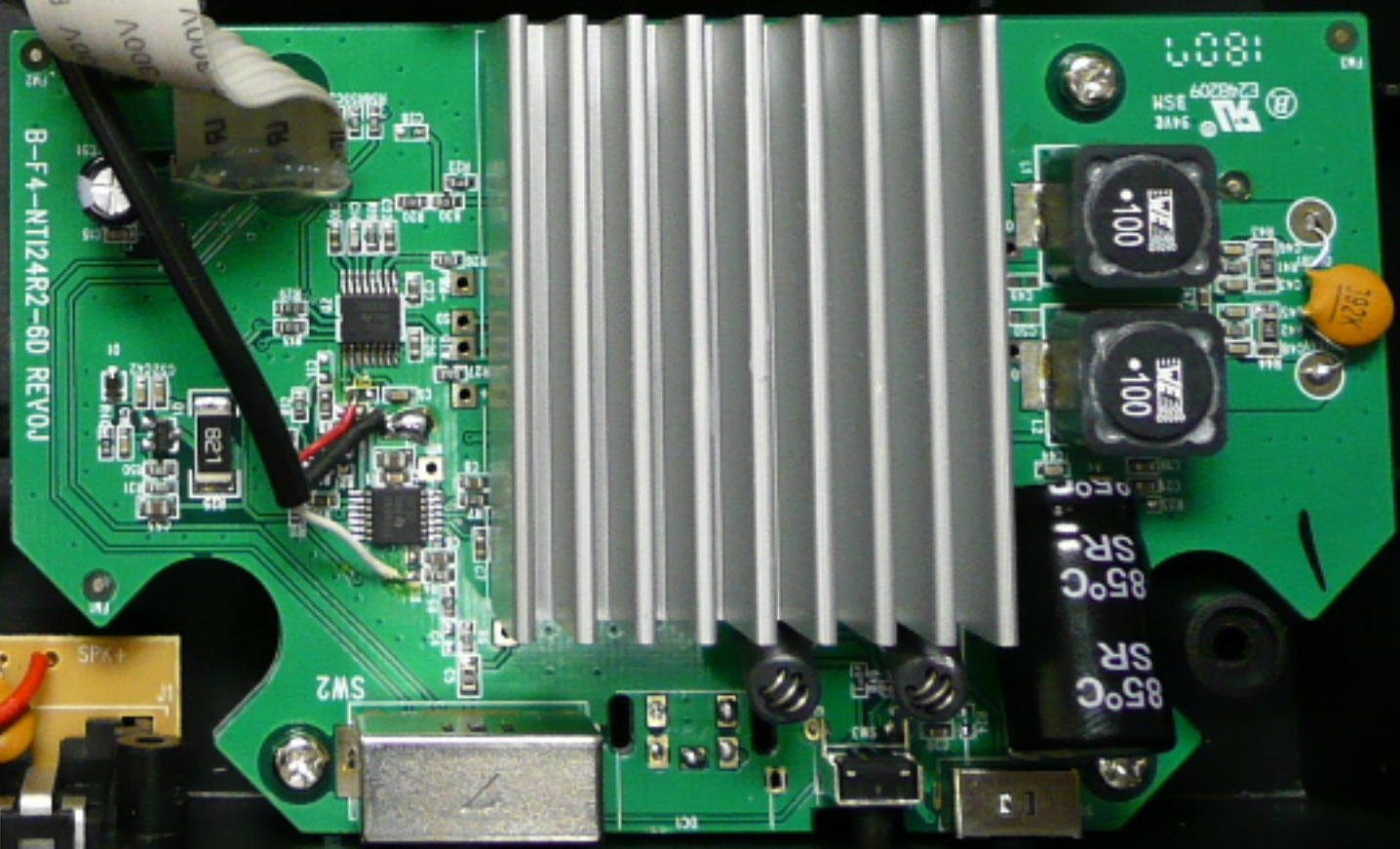
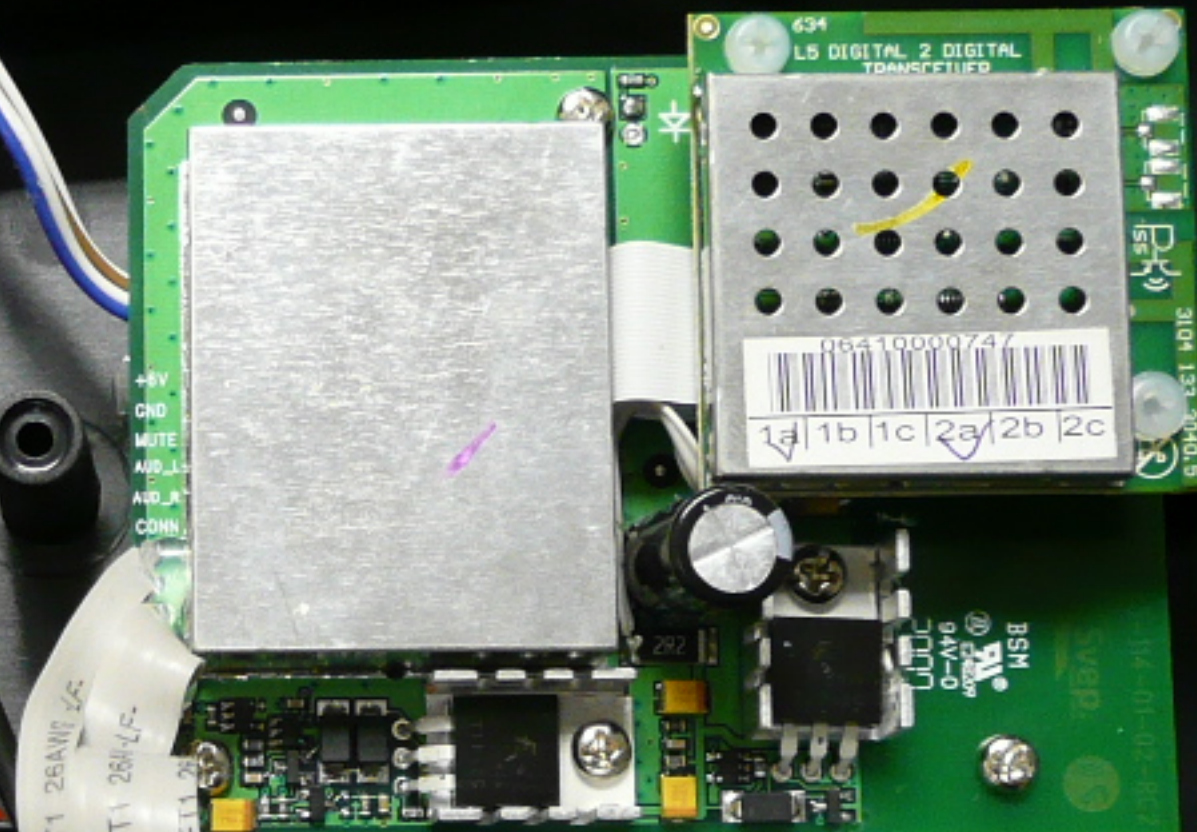
AR MODEL: P-048B  
 SWITCHING POWER SUPPLY

50/60Hz 1.5A  
 OUTPUT: 24V --- 2.4A  
 6.3V --- 0.6A

UL us CE  
 LISTED 2HW4 E229085 LPS

6.3V+ 24V+ 6.3V- 24V-  
 EFFICIENCY LEVEL: III  
 P/N: B1551-07060401117 Rev. A  
 CAUTION:

XIAMEN REKEXING TRADE CO., LTD.



FT1 28kV/c  
 FT1 28kV/c  
 ET1.2

B-F4-NT124R2-60 REV01

L5 DIGITAL 2 DIGITAL TRANSCEIVER  
 0641000074  
 1a 1b 1c 2a 2b 2c

100  
 100  
 332K  
 85°C SR  
 85°C SR

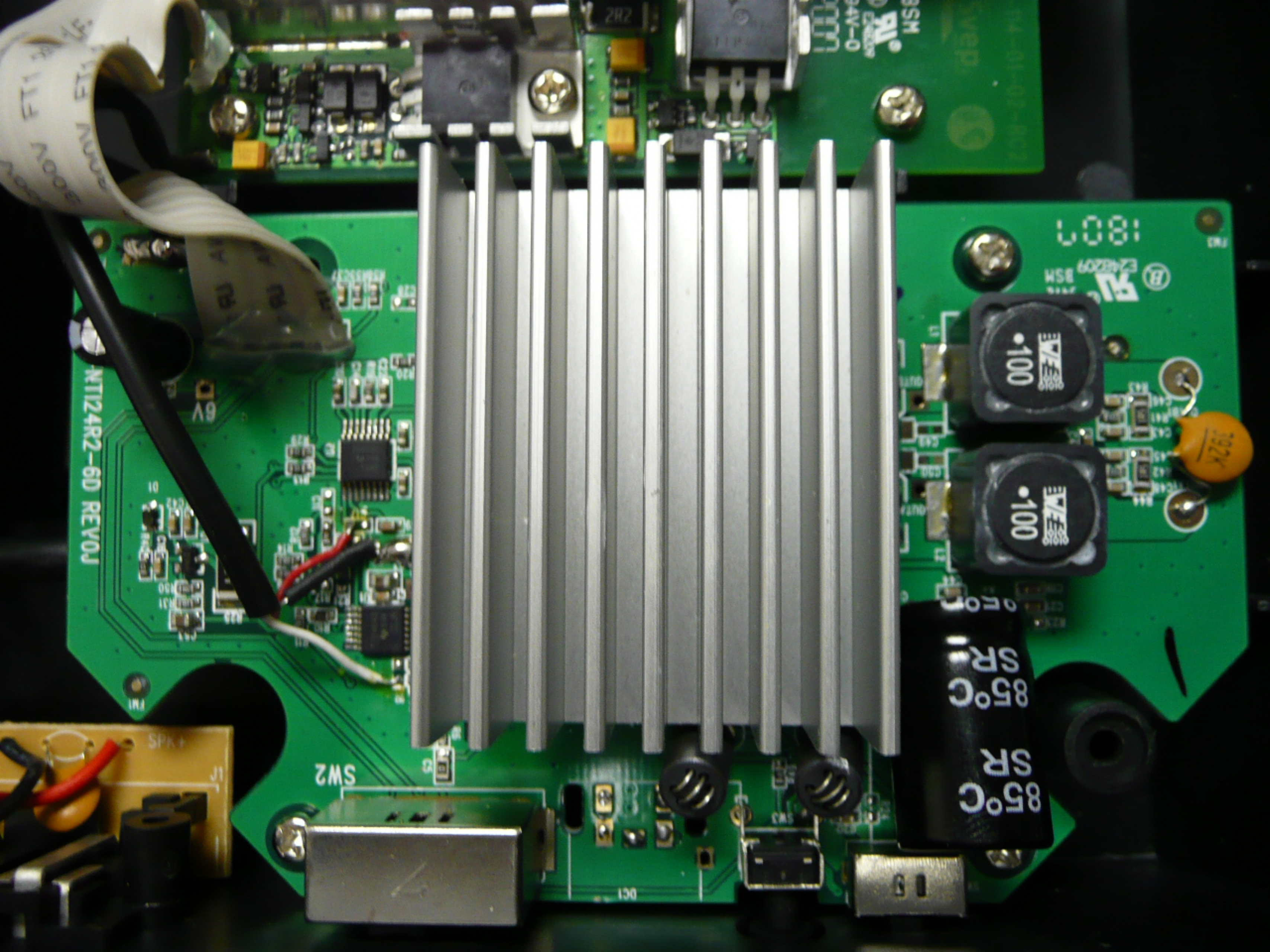
+5V  
 GND  
 MUTE  
 AFD\_L  
 AFD\_A  
 COMN

BSM  
 9AV-0  
 0-1000

602823  
 HSE  
 24V

SW2





1807

BSM E748209

100

100

SR 85°C

SR 85°C

NT124R2-6D REV0J

6V

SW2

DC1

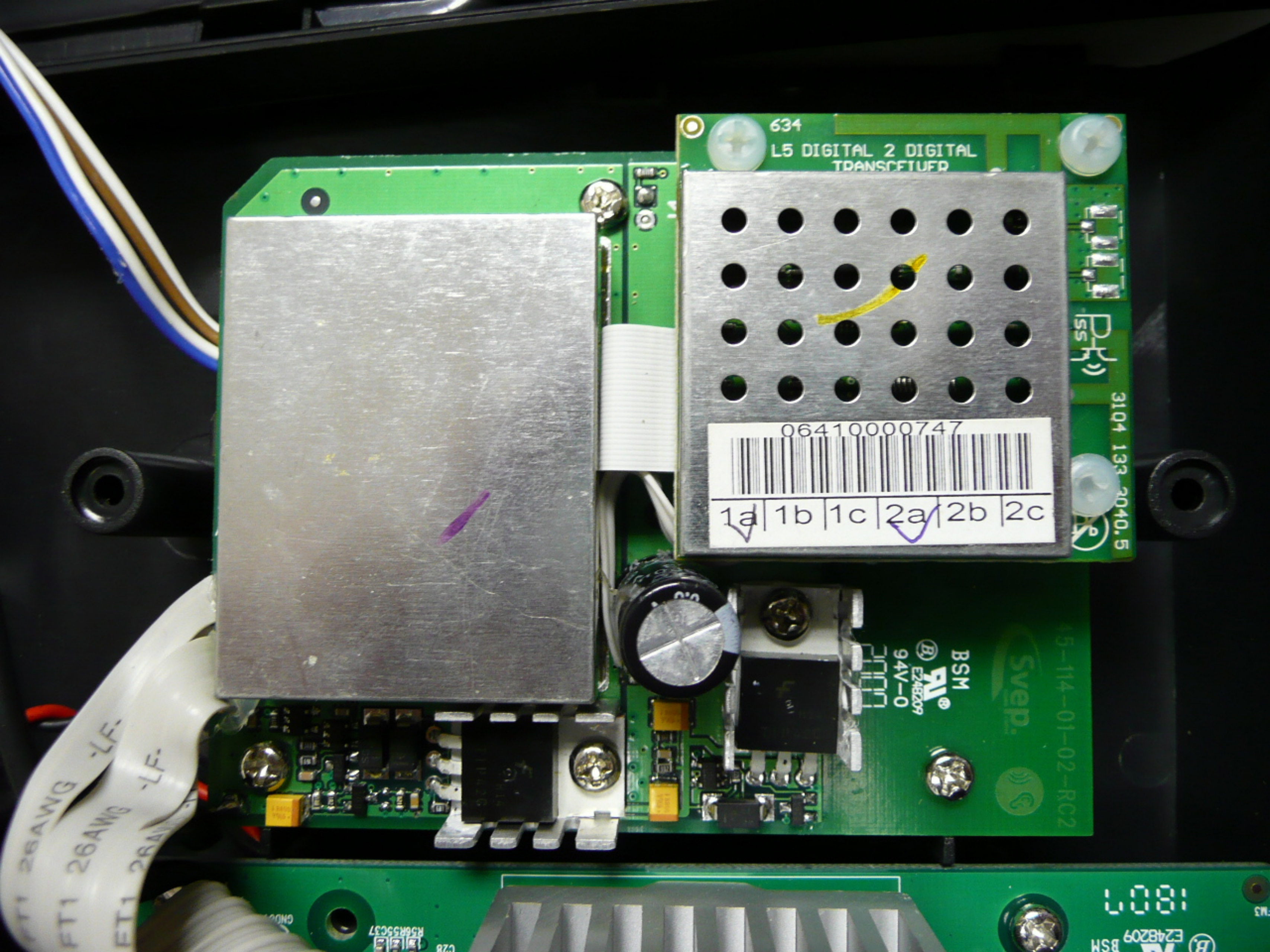
FT1 2017

FT1 2017

SPK+

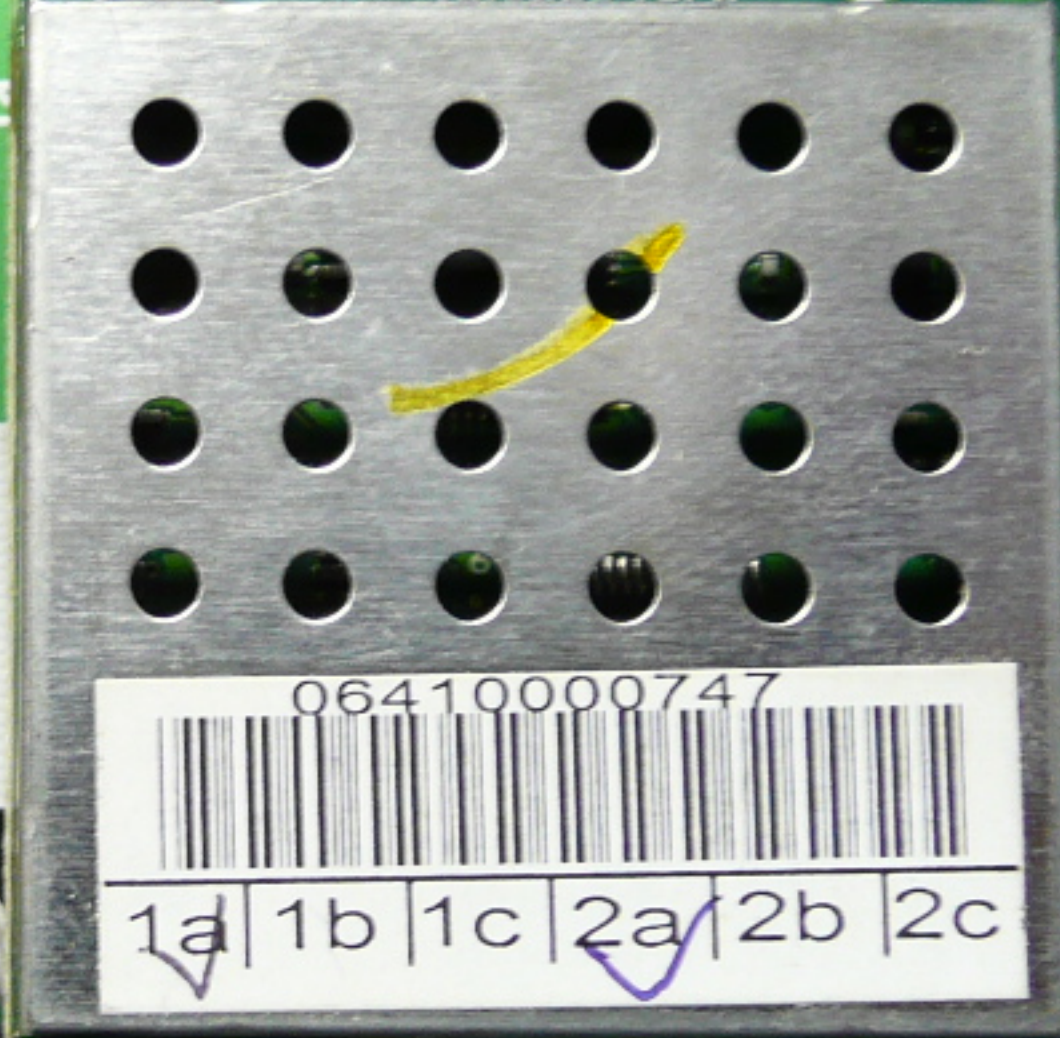
J1





634

L5 DIGITAL 2 DIGITAL  
TRANSCEIVER



BSM

3104 133 2040.5

06410000747



1a | 1b | 1c | 2a | 2b | 2c



BSM  
E248209  
94V-0

Svep.

45-114-01-02-RC2

FT1 26AWG -LF-  
FT1 26AWG -LF-  
FT1 26AWG -LF-

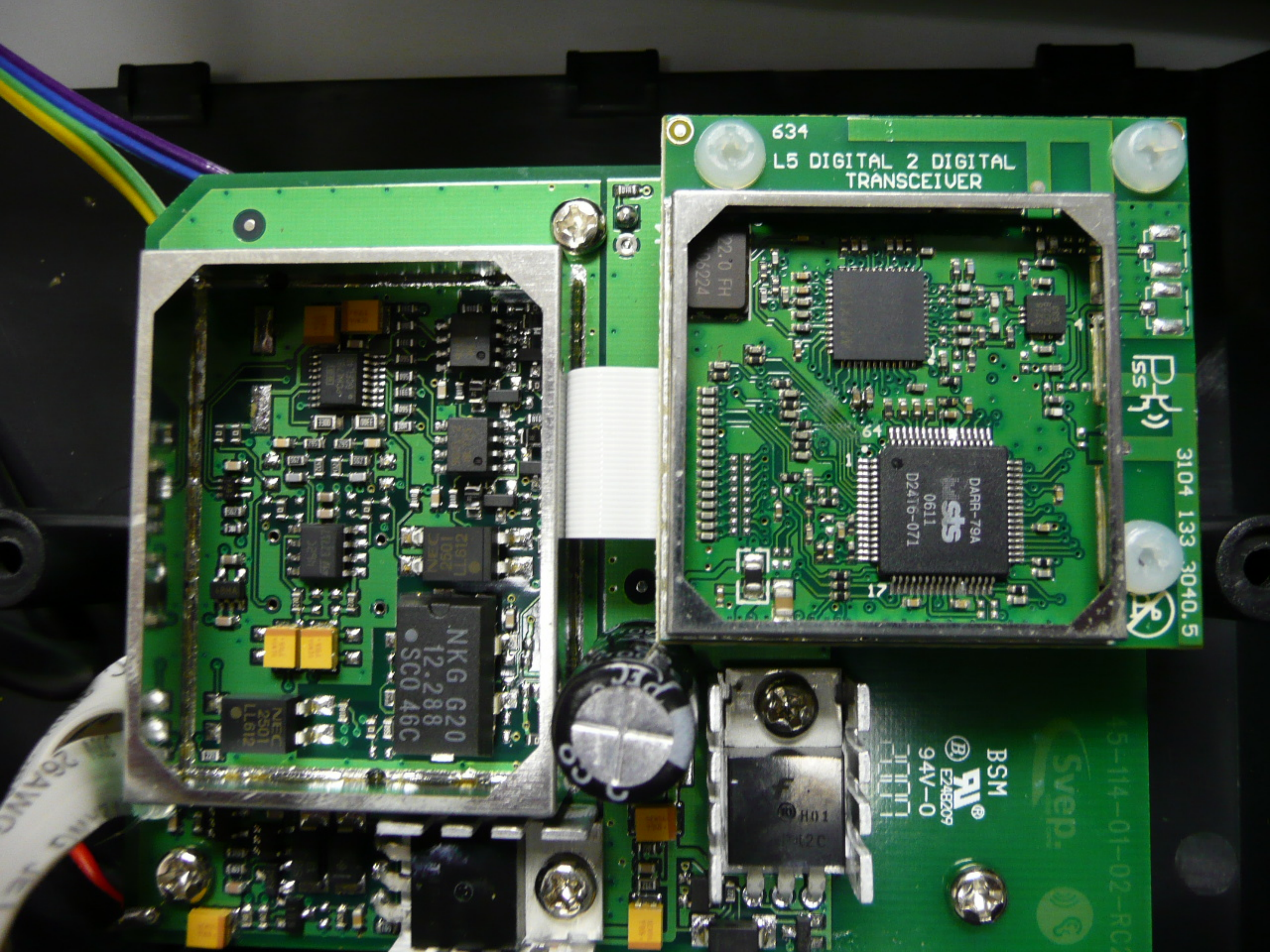
1807

BSM  
E248209

R56R55C37

C28





634

L5 DIGITAL 2 DIGITAL  
TRANSCEIVER

PSH

3104 133 3040.5

22.0 FH  
06224

64

DARR-79A  
0611  
sts  
D2416-071

2197T  
109C  
JAN

NKG 620  
12.288  
SC046C

NEC  
2501  
LL612

PEC  
333

BSM  
PVI  
E248Z09  
94V-0

H01  
P-L2C

Svep.

5-114-01-02-RC

264W