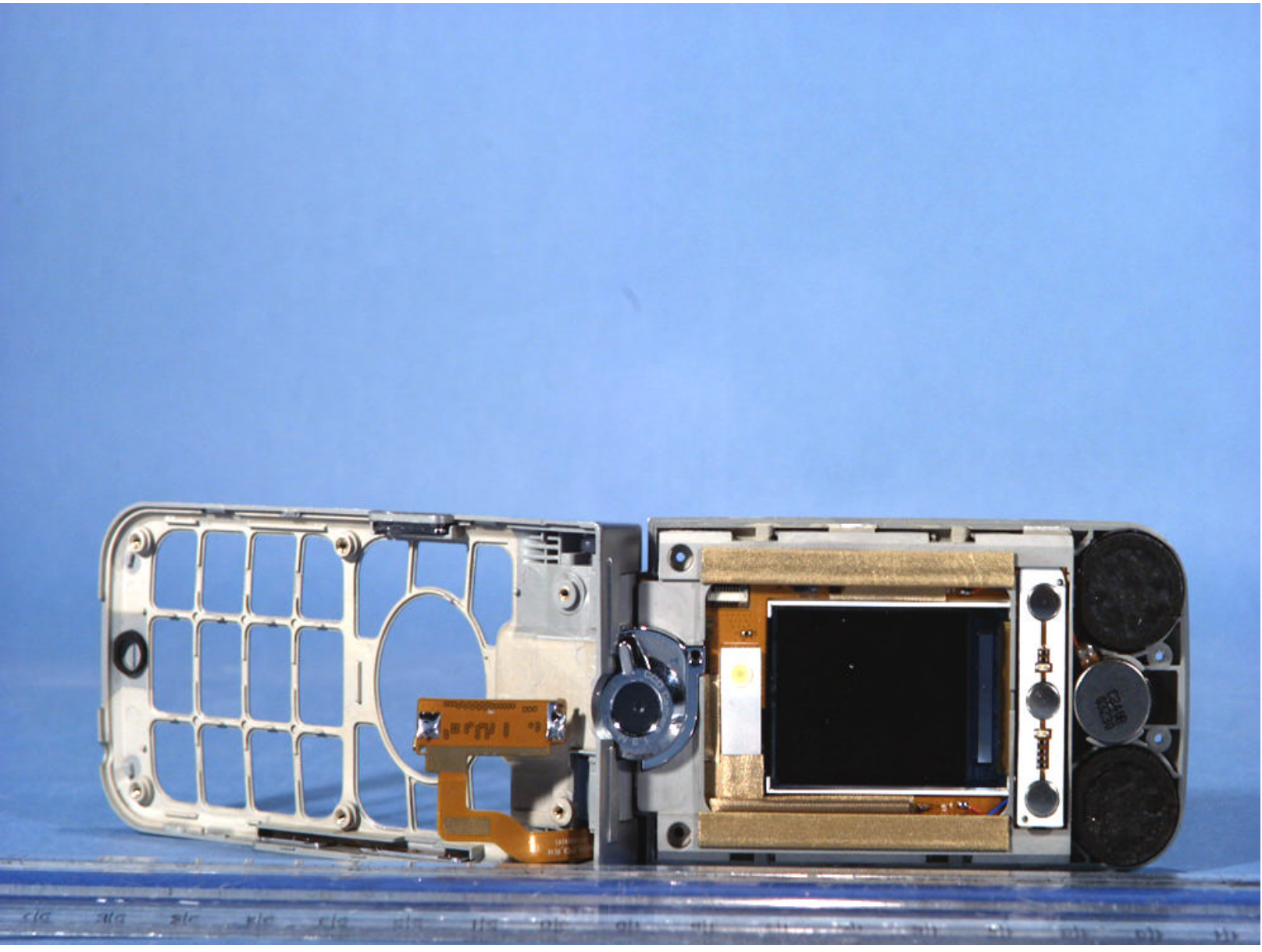
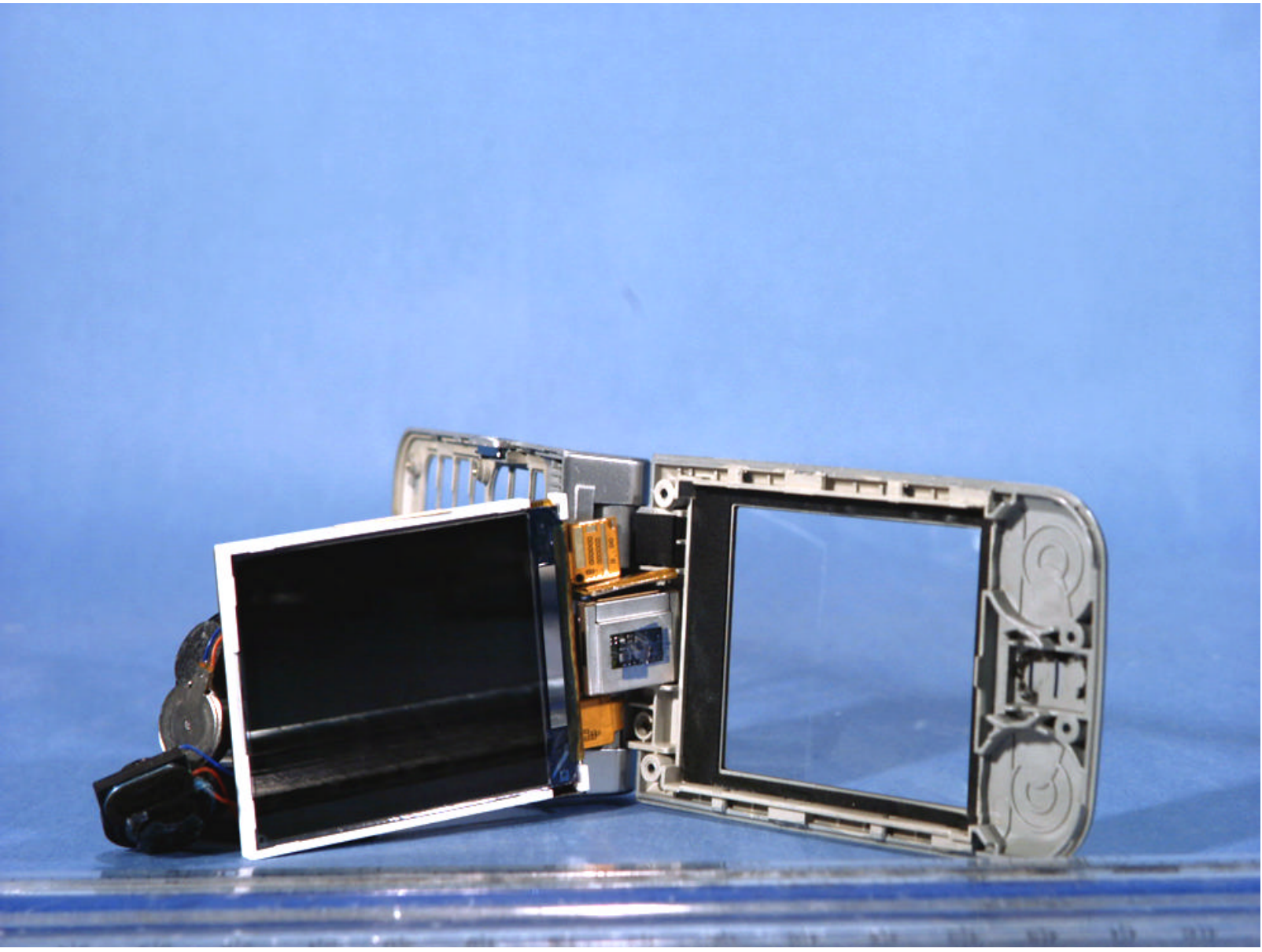


 PCTEST Precision Calibration, Verification, & Test	LGE FCC ID: BE/VX8000	EUT Photographs
© 2004 PCTEST Lab.	Dual-Band CDMA Phone	Model: VX8000





**PCTEST**  
Product Safety, Performance, & Usability Lab

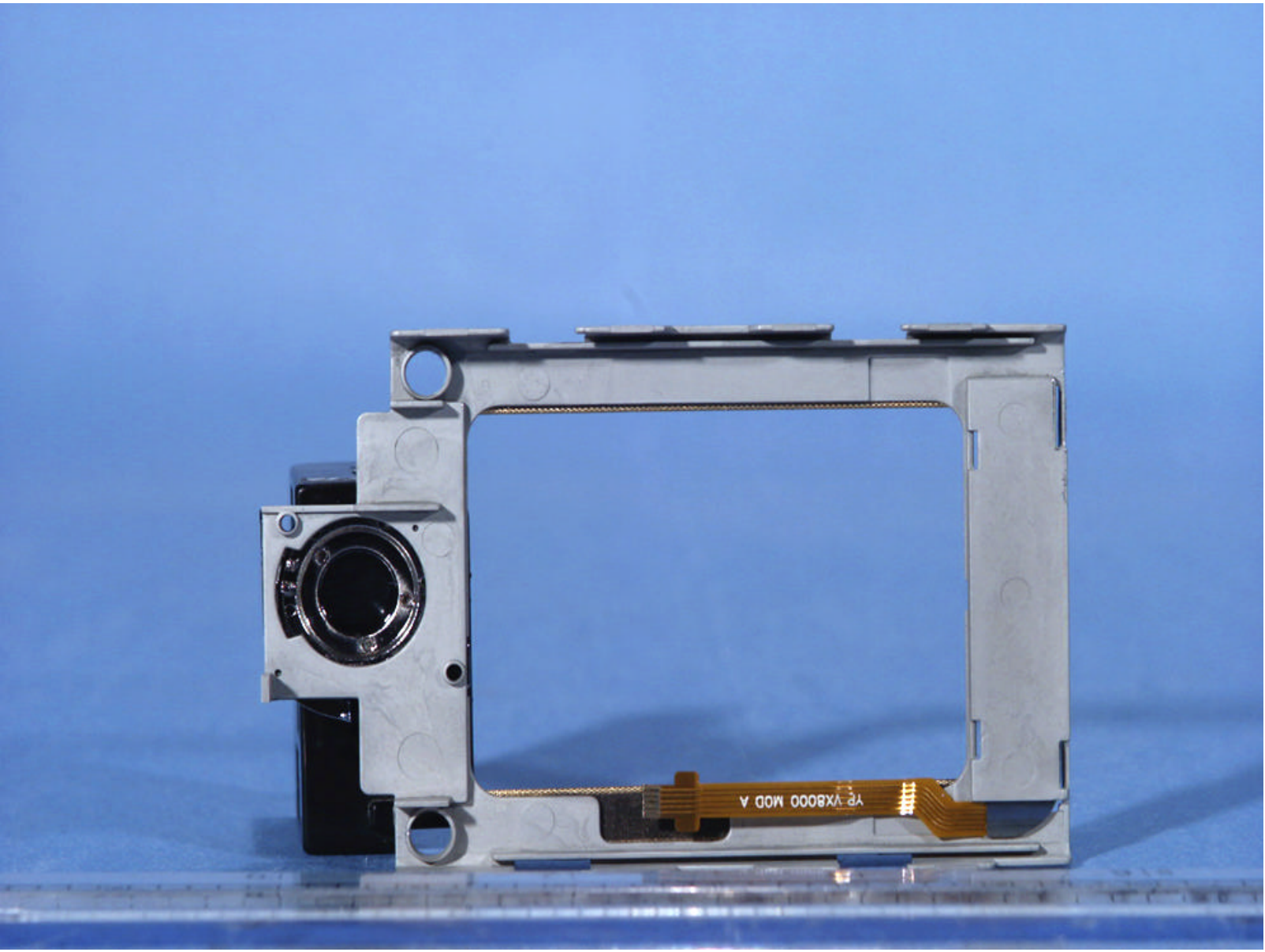
© 2004 PCTEST Lab.

LGE FCC ID: BEJ/VX8000

Dual-Band CDMA Phone

EUT Photographs

Model: VX8000



**PCTEST**  
Precision Test Equipment & Lab

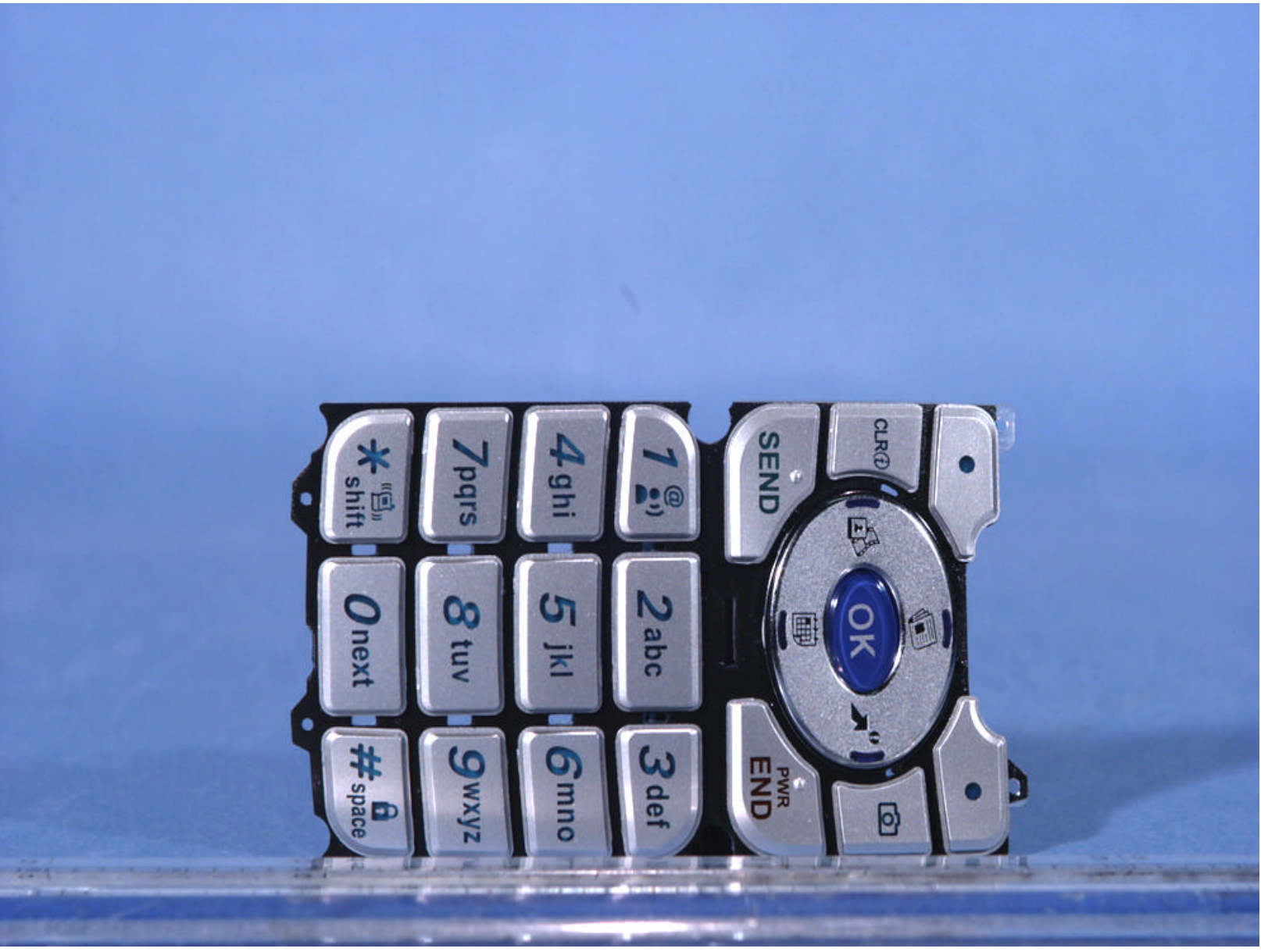
© 2004 PCTEST Lab.

LGE FCC ID: BEJ VX8000

Dual-Band CDMA Phone

EUT Photographs

Model: VX8000



 <b>PCTEST</b> Professional Cellular Testing Equipment & Lab	LGE FCC ID: BE/VX8000	EUT Photographs
© 2004 PCTEST Lab.	Dual-Band CDMA Phone	Model: VX8000



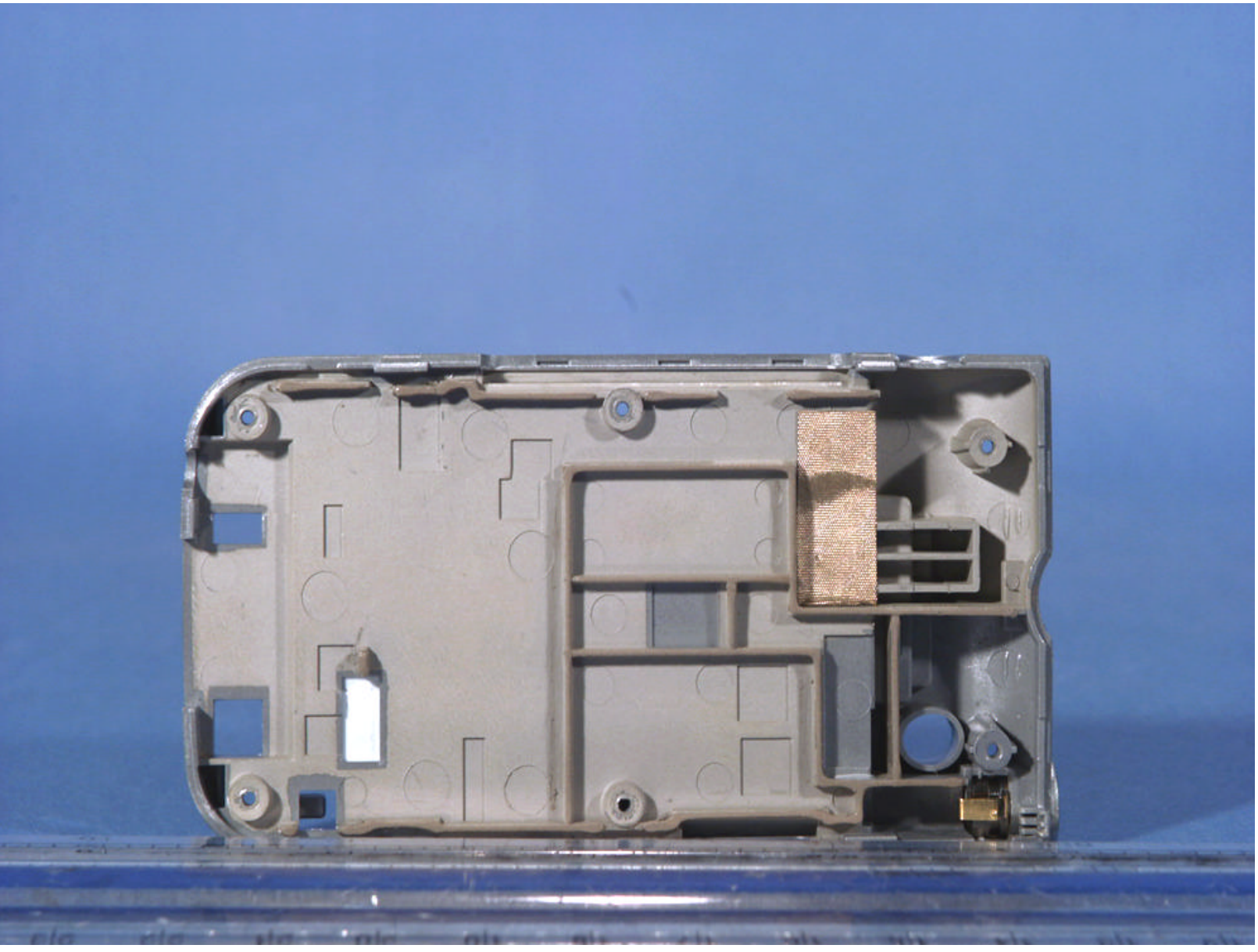
**PCTEST**  
Product Safety, Performance, & Usability Lab

© 2004 PCTEST Lab.

LGE FCC ID: BELVX8000  
Dual-Band CDMA Phone

EUT Photographs

Model: VX8000



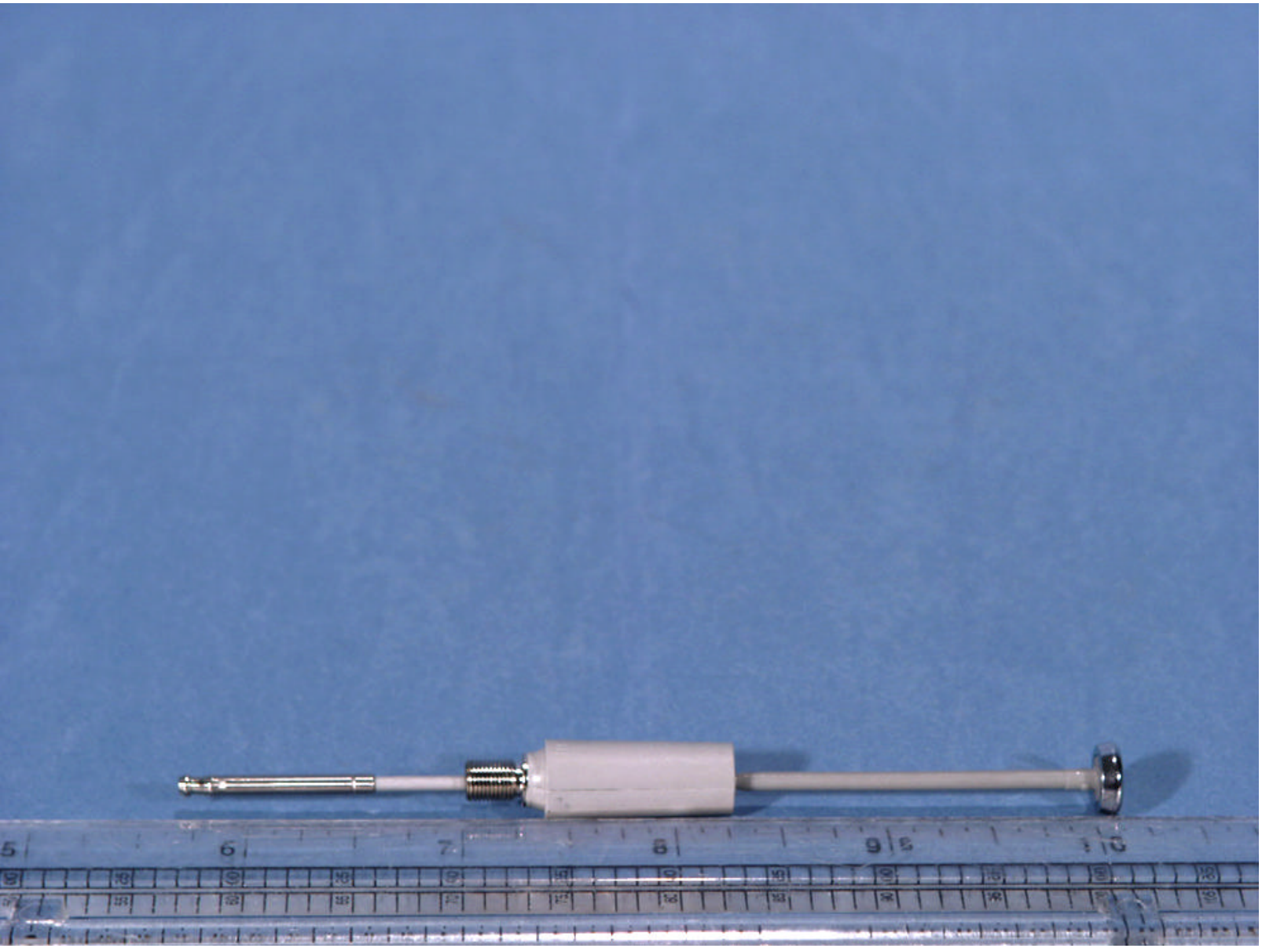
**PCTEST**  
Product Testing, Verification, & Lab

© 2004 PCTEST Lab.

LGE FCC ID: BELVX8000  
Dual-Band CDMA Phone

EUT Photographs

Model: VX8000



**PCTEST**  
Professional Calibration, Verification & Lab

© 2004 PCTEST Lab.

LGE FCC ID: BELVX8000  
Dual-Band CDMA Phone

EUT Photographs  
Model: VX8000