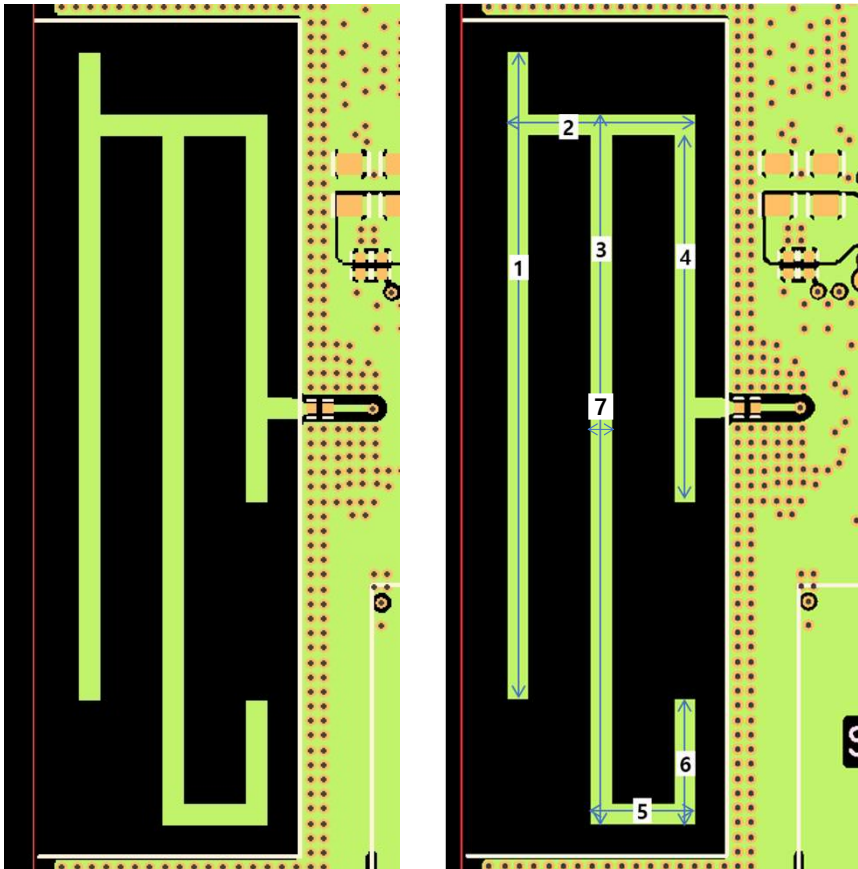


Internal Antenna(PCB pattern Antenna)



Dimension

(단위 : mm)

Point	1	2	3	4	5	6	7
Length	31.00	9.00	34.00	18.55	5.00	6.00	1.00

Antenna Gain

Band	Peak Gain (Ant 0 [Internal Ant])
2.4 GHz (2 412 MHz ~ 2 472 MHz)	0.89 dBi @ 2 480 MHz
5.2 GHz (UNII-1) (5 180 MHz ~ 5 240 MHz)	0.63 dBi @ 5 190 MHz
5.8 GHz (UNII-3) (5 745 MHz ~ 5 825 MHz)	-1.04 dBi @ 5 745 MHz

Manufacturer Information

- Name : LG Electronics
- Address : Lot CN2, Trang Due Industrial Park, Le Loi Commune,
An Duong District, Hai Phong City, Vietnam.

External Antenna(PCB antenna subassembly)



Dimension

- 30 mm x 30 mm x 48.5 mm

Connectivity

- FAKRA Connector, I key, male

Antenna Gain

Band	Peak Gain (Ant 1 [External Ant])
2.4 GHz (2 412 MHz ~ 2 472 MHz)	2.18 dBi @ 2 442 MHz
5.2 GHz (UNII-1) (5 180 MHz ~ 5 240 MHz)	2.37 dBi @ 5 180 MHz
5.8 GHz (UNII-3) (5 745 MHz ~ 5 825 MHz)	3.61 dBi @ 5 785 MHz

Manufacturer Information

- Name : TE Connectivity
- Address : 128 Tinglan Lane Suzhou Industrial Zone Suzhou

[FCC Power 관련 사항]

※ Measured Value에 Duty Factor 보정된 값임
 ※ Correction Factor = Antenna Factor + Cable Loss

2.4 GHz [EN 300 328] Power

Ant 1 [External Antenna]														
Maximum Conducted Power (Radiated)														
Band	Mode	Freq. (MHz)	Polarization (H / V)	Antenna Height (m)	Angle (°)	OBW (MHz)	Measured (dBuV)	Correction Factor (dB)	Result (dBuV/m)	E.I.R.P (dBm)	Ant Gain (dBi)	Conducted Power (dBm)	Target Setting	
WLAN 2.4 GHz	802.11b	2 412	V	1.7	175	13.39	74.91	31.88	106.79	11.53	1.36	10.17	16	
		2 442	V	1.7	175	13.39	75.38	32.07	107.45	12.19	1.09	11.10	16	
		2 472	V	1.7	175	13.39	74.07	32.05	106.12	10.86	0.93	9.93	16	
	802.11g	2 412	V	1.7	175	16.38	75.01	31.88	106.89	11.63	0.93	10.70	16	
		2 442	V	1.7	175	16.38	75.77	32.07	107.84	12.58	1.28	11.30	16	
		2 472	V	1.7	175	16.43	74.23	32.05	106.28	11.02	0.53	10.49	16	
	802.11n (HT20)	2 412	V	1.7	175	17.48	75.03	31.88	106.91	11.65	0.78	10.87	16	
		2 442	V	1.7	175	17.53	76.83	32.07	108.90	13.64	2.18	11.46	16	
		2 472	V	1.7	175	17.53	74.28	32.05	106.33	11.07	0.36	10.71	16	

Worst Ant Gain (Calculated)		
Band	Peak Gain (Ant 0)	Peak Gain (Ant 1)
2.4 GHz	0.89 dBi	2.18 dBi
5.2 GHz	0.63 dBi	2.37 dBi
5.8 GHz	-1.04 dBi	3.61 dBi

Ant 1 [External Antenna]														
Power Spectral Density (Radiated)														
Band	Mode	Freq. (MHz)	Polarization (H / V)	Antenna Height (m)	Angle (°)	OBW (MHz)	Measured (dBuV)	Correction Factor (dB)	Result (dBuV/m)	E.I.R.P Density (dBm)	Ant Gain (dBi)	Conducted Power (dBm)	Target Setting	
WLAN 2.4 GHz	802.11b	2 412	V	1.7	175		40.02	31.88	71.90	-23.36	-0.22	-23.14	16	
		2 442	V	1.7	175		39.85	32.07	71.92	-23.34	-1.17	-22.17	16	
		2 472	V	1.7	175		40.06	32.05	72.11	-23.15	0.04	-23.19	16	
	802.11g	2 412	V	1.7	175		38.66	31.88	70.54	-24.72	-0.64	-24.08	16	
		2 442	V	1.7	175		39.26	32.07	71.33	-23.93	-0.28	-23.65	16	
		2 472	V	1.7	175		39.87	32.05	71.92	-23.34	1.19	-24.53	16	
	802.11n (HT20)	2 412	V	1.7	175		38.46	31.88	70.34	-24.92	-0.59	-24.33	16	
		2 442	V	1.7	175		39.12	32.07	71.19	-24.07	-0.23	-23.84	16	
		2 472	V	1.7	175		39.66	32.05	71.71	-23.55	0.76	-24.31	16	

5 GHz [EN 301 893] Power

Ant 0 [Internal Antenna]													
Band	Mode	Freq. (MHz)	Maximum Conducted Power (Radiated)										
			Polarization (H / V)	Antenna Height (m)	Angle (°)	OBW (MHz)	Measured (dBuV)	Correction Factor (dB)	Result (dBuV/m)	E.I.R.P (dBm)	Ant Gain (dBi)	Conducted Power (dBm)	Target Setting
WLAN 5 GHz (U-NII 1)	802.11a	5 180	H	1.7	290	16.43	72.72	38.04	110.76	15.50	0.40	15.10	16
		5 220	H	1.7	290	16.43	72.70	38.05	110.75	15.49	-0.22	15.71	16
		5 240	H	1.7	290	16.48	72.68	37.86	110.54	15.28	-0.83	16.11	16
	802.11n (HT20)	5 180	H	1.7	290	17.63	73.66	38.04	111.70	16.44	0.37	16.07	17
		5 220	H	1.7	290	17.63	73.57	38.05	111.62	16.36	-0.30	16.66	17
		5 240	H	1.7	290	17.58	73.57	37.86	111.43	16.17	-0.86	17.03	17
	802.11n (HT40)	5 190	H	1.7	290	36.26	72.88	38.08	110.96	15.70	0.48	15.22	16
		5 230	H	1.7	290	36.26	72.65	37.90	110.55	15.29	-0.69	15.98	16
	802.11ac (VHT80)	5 210	H	1.7	290	76.32	68.93	38.25	107.18	11.92	0.15	11.77	12

Ant 0 [Internal Antenna]													
Band	Mode	Freq. (MHz)	Power Spectral Density (Radiated)										
			Polarization (H / V)	Antenna Height (m)	Angle (°)	OBW (MHz)	Measured (dBuV)	Correction Factor (dB)	Result (dBuV/m)	E.I.R.P Density (dBm)	Ant Gain (dBi)	Conducted Power (dBm)	Target Setting
WLAN 5 GHz (U-NII 1)	802.11a	5 180	H	1.7	290		61.37	38.04	99.41	4.15	-0.98	5.13	16
		5 220	H	1.7	290		61.71	38.05	99.76	4.50	-0.31	4.81	16
		5 240	H	1.7	290		61.70	37.86	99.56	4.30	-0.81	5.11	16
	802.11n (HT20)	5 180	H	1.7	290		62.48	38.04	100.52	5.26	0.64	4.62	17
		5 220	H	1.7	290		62.43	38.05	100.48	5.22	0.25	4.97	17
		5 240	H	1.7	290		62.61	37.86	100.47	5.21	-0.46	5.67	17
	802.11n (HT40)	5 190	H	1.7	290		58.82	38.08	96.90	1.64	0.46	1.18	16
		5 230	H	1.7	290		58.58	37.90	96.48	1.22	-0.79	2.01	16
	802.11ac (VHT80)	5 210	H	1.7	290		51.59	38.25	89.84	-5.42	0.10	-5.52	12

5 GHz [EN 301 893] Power

Ant 1 [External Antenna]													
Band	Mode	Freq. (MHz)	Maximum Conducted Power (Radiated)										
			Polarization (H / V)	Antenna Height (m)	Angle (°)	OBW (MHz)	Measured (dBuV)	Correction Factor (dB)	Result (dBuV/m)	E.I.R.P (dBm)	Ant Gain (dBi)	Conducted Power (dBm)	Target Setting
WLAN 5 GHz (U-NII 1)	802.11a	5 180	V	1.7	230	16.43	67.74	38.04	105.78	10.52	2.37	8.15	16
		5 220	V	1.7	230	16.43	67.51	38.05	105.56	10.30	2.27	8.03	16
		5 240	V	1.7	230	16.48	67.16	37.86	105.02	9.76	1.59	8.17	16
	802.11n (HT20)	5 180	V	1.7	230	17.58	68.69	38.04	106.73	11.47	2.31	9.16	17
		5 220	V	1.7	230	17.58	68.53	38.05	106.58	11.32	2.29	9.03	17
		5 240	V	1.7	230	17.58	68.21	37.86	106.07	10.81	1.66	9.15	17
	802.11n (HT40)	5 190	V	1.7	230	36.26	67.55	38.08	105.63	10.37	2.21	8.16	16
		5 230	V	1.7	230	36.26	67.44	37.90	105.34	10.08	1.90	8.18	16
	802.11ac (VHT80)	5 210	V	1.7	230	76.52	63.77	38.25	102.02	6.76	2.22	4.54	12

Ant 1 [External Antenna]													
Band	Mode	Freq. (MHz)	Power Spectral Density (Radiated)										
			Polarization (H / V)	Antenna Height (m)	Angle (°)	OBW (MHz)	Measured (dBuV)	Correction Factor (dB)	Result (dBuV/m)	E.I.R.P Density (dBm)	Ant Gain (dBi)	Conducted Power (dBm)	Target Setting
WLAN 5 GHz (U-NII 1)	802.11a	5 180	V	1.7	230		57.03	38.04	95.07	-0.19	2.36	-2.55	16
		5 220	V	1.7	230		57.08	38.05	95.13	-0.13	2.47	-2.60	16
		5 240	V	1.7	230		56.51	37.86	94.37	-0.89	1.84	-2.73	16
	802.11n (HT20)	5 180	V	1.7	230		57.66	38.04	95.70	0.44	2.49	-2.05	17
		5 220	V	1.7	230		57.56	38.05	95.61	0.35	2.51	-2.16	17
		5 240	V	1.7	230		57.06	37.86	94.92	-0.34	1.71	-2.05	17
	802.11n (HT40)	5 190	V	1.7	230		53.28	38.08	91.36	-3.90	2.14	-6.04	16
		5 230	V	1.7	230		53.78	37.90	91.68	-3.58	2.32	-5.90	16
	802.11ac (VHT80)	5 210	V	1.7	230		46.25	38.25	84.50	-10.76	2.25	-13.01	12

5 GHz [EN 300 440] Power

Ant 0 [Internal Antenna]													
Band	Mode	Freq. (MHz)	Maximum Conducted Power (Radiated)										
			Polarization (H / V)	Antenna Height (m)	Angle (°)	OBW (MHz)	Measured (dBuV)	Correction Factor (dB)	Result (dBuV/m)	E.I.R.P (dBm)	Ant Gain (dBi)	Conducted Power (dBm)	Target Setting
WLAN 5 GHz (U-NII 3)	802.11a	5 745	V	1.7	350	16.43	70.68	38.68	109.36	14.10	-1.19	15.29	16
		5 785	V	1.7	350	16.43	69.63	38.92	108.55	13.29	-1.93	15.22	16
		5 825	V	1.7	350	16.43	69.20	38.98	108.18	12.92	-1.96	14.88	16
	802.11n (HT20)	5 745	V	1.7	350	17.58	71.68	38.68	110.36	15.10	-1.04	16.14	17
		5 785	V	1.7	350	17.63	70.73	38.92	109.65	14.39	-1.77	16.16	17
		5 825	V	1.7	350	17.58	70.24	38.98	109.22	13.96	-1.89	15.85	17
	802.11n (HT40)	5 755	V	1.7	350	36.26	70.32	38.66	108.98	13.72	-1.47	15.19	16
		5 795	V	1.7	350	36.26	69.57	38.91	108.48	13.22	-1.91	15.13	16
	802.11ac (VHT80)	5 775	V	1.7	350	76.52	66.22	38.98	105.20	9.94	-1.75	11.69	12

Ant 0 [Internal Antenna]													
Band	Mode	Freq. (MHz)	Power Spectral Density (Radiated)										
			Polarization (H / V)	Antenna Height (m)	Angle (°)	OBW (MHz)	Measured (dBuV)	Correction Factor (dB)	Result (dBuV/m)	E.I.R.P Density (dBm)	Ant Gain (dBi)	Conducted Power (dBm)	Target Setting
WLAN 5 GHz (U-NII 3)	802.11a	5 745	V	1.7	350		56.66	38.68	95.34	0.08	-1.31	1.39	16
		5 785	V	1.7	350		56.02	38.92	94.94	-0.32	-1.60	1.28	16
		5 825	V	1.7	350		55.50	38.98	94.48	-0.78	-1.96	1.18	16
	802.11n (HT20)	5 745	V	1.7	350		57.55	38.68	96.23	0.97	-1.19	2.16	17
		5 785	V	1.7	350		56.48	38.92	95.40	0.14	-2.32	2.46	17
		5 825	V	1.7	350		56.12	38.98	95.10	-0.16	-1.81	1.65	17
	802.11n (HT40)	5 755	V	1.7	350		53.57	38.66	92.23	-3.03	-1.11	-1.92	16
		5 795	V	1.7	350		52.66	38.91	91.57	-3.69	-1.72	-1.97	16
	802.11ac (VHT80)	5 775	V	1.7	350		46.02	38.98	85.00	-10.26	-1.36	-8.90	12

5 GHz [EN 300 440] Power

Ant 1 [External Antenna]													
Band	Mode	Freq. (MHz)	Maximum Conducted Power (Radiated)										
			Polarization (H / V)	Antenna Height (m)	Angle (°)	OBW (MHz)	Measured (dBuV)	Correction Factor (dB)	Result (dBuV/m)	E.I.R.P (dBm)	Ant Gain (dBi)	Conducted Power (dBm)	Target Setting
WLAN 5 GHz (U-NII 3)	802.11a	5 745	V	1.7	255	16.48	67.52	38.68	106.20	10.94	2.41	8.53	16
		5 785	V	1.7	255	16.48	68.15	38.92	107.07	11.81	3.61	8.20	16
		5 825	V	1.7	255	16.48	67.31	38.98	106.29	11.03	2.99	8.04	16
	802.11n (HT20)	5 745	V	1.7	255	17.53	68.47	38.68	107.15	11.89	2.34	9.55	17
		5 785	V	1.7	255	17.63	69.11	38.92	108.03	12.77	3.59	9.18	17
		5 825	V	1.7	255	17.58	68.34	38.98	107.32	12.06	3.00	9.06	17
	802.11n (HT40)	5 755	V	1.7	255	36.36	67.57	38.66	106.23	10.97	2.51	8.46	16
		5 795	V	1.7	255	36.36	67.73	38.91	106.64	11.38	3.05	8.33	16
	802.11ac (VHT80)	5 775	V	1.7	255	76.92	63.97	38.98	102.95	7.69	3.03	4.66	12

Ant 1 [External Antenna]													
Band	Mode	Freq. (MHz)	Power Spectral Density (Radiated)										
			Polarization (H / V)	Antenna Height (m)	Angle (°)	OBW (MHz)	Measured (dBuV)	Correction Factor (dB)	Result (dBuV/m)	E.I.R.P Density (dBm)	Ant Gain (dBi)	Conducted Power (dBm)	Target Setting
WLAN 5 GHz (U-NII 3)	802.11a	5 745	V	1.7	255		53.99	38.68	92.67	-2.59	2.67	-5.26	16
		5 785	V	1.7	255		54.74	38.92	93.66	-1.60	4.20	-5.80	16
		5 825	V	1.7	255		54.04	38.98	93.02	-2.24	3.83	-6.07	16
	802.11n (HT20)	5 745	V	1.7	255		54.69	38.68	93.37	-1.89	2.64	-4.53	17
		5 785	V	1.7	255		55.76	38.92	94.68	-0.58	4.38	-4.96	17
		5 825	V	1.7	255		54.40	38.98	93.38	-1.88	3.29	-5.17	17
	802.11n (HT40)	5 755	V	1.7	255		50.76	38.66	89.42	-5.84	2.73	-8.57	16
		5 795	V	1.7	255		51.17	38.91	90.08	-5.18	3.74	-8.92	16
	802.11ac (VHT80)	5 775	V	1.7	255		43.73	38.98	82.71	-12.55	3.38	-15.93	12

[ISED Power 관련 사항]

※ Measured Value에 Duty Factor 보정된 값임
 ※ Correction Factor = Antenna Factor + Cable Loss

2.4 GHz [EN 300 328] Power

Ant 1 [External Antenna]													
Maximum Conducted Power (Radiated)													
Band	Mode	Freq. (MHz)	Polarization (H / V)	Antenna Height (m)	Angle (°)	OBW (MHz)	Measured (dBuV)	Correction Factor (dB)	Result (dBuV/m)	E.I.R.P (dBm)	Ant Gain (dBi)	Conducted Power (dBm)	Target Setting
WLAN 2.4 GHz	802.11b	2 412	V	1.7	175	13.39	74.91	31.88	106.79	11.53	1.36	10.17	16
		2 442	V	1.7	175	13.39	75.38	32.07	107.45	12.19	1.09	11.10	16
		2 472	V	1.7	175	13.39	74.07	32.05	106.12	10.86	0.93	9.93	16
	802.11g	2 412	V	1.7	175	16.38	75.01	31.88	106.89	11.63	0.93	10.70	16
		2 442	V	1.7	175	16.38	75.77	32.07	107.84	12.58	1.28	11.30	16
		2 472	V	1.7	175	16.43	74.23	32.05	106.28	11.02	0.53	10.49	16
	802.11n (HT20)	2 412	V	1.7	175	17.48	75.03	31.88	106.91	11.65	0.78	10.87	16
		2 442	V	1.7	175	17.53	76.83	32.07	108.90	13.64	2.18	11.46	16
		2 472	V	1.7	175	17.53	74.28	32.05	106.33	11.07	0.36	10.71	16

Worst Ant Gain (Calculated)		
Band	Peak Gain (Ant 0)	Peak Gain (Ant 1)
2.4 GHz	0.89 dBi	2.18 dBi
5.2 GHz	0.63 dBi	2.37 dBi
5.8 GHz	-1.04 dBi	3.61 dBi

Ant 1 [External Antenna]													
Power Spectral Density (Radiated)													
Band	Mode	Freq. (MHz)	Polarization (H / V)	Antenna Height (m)	Angle (°)	OBW (MHz)	Measured (dBuV)	Correction Factor (dB)	Result (dBuV/m)	E.I.R.P Density (dBm)	Ant Gain (dBi)	Conducted Power (dBm)	Target Setting
WLAN 2.4 GHz	802.11b	2 412	V	1.7	175	40.02	31.88	71.90	-23.36	-0.22	-23.14	16	
		2 442	V	1.7	175	39.85	32.07	71.92	-23.34	-1.17	-22.17	16	
		2 472	V	1.7	175	40.06	32.05	72.11	-23.15	0.04	-23.19	16	
	802.11g	2 412	V	1.7	175	38.66	31.88	70.54	-24.72	-0.64	-24.08	16	
		2 442	V	1.7	175	39.26	32.07	71.33	-23.93	-0.28	-23.65	16	
		2 472	V	1.7	175	39.87	32.05	71.92	-23.34	1.19	-24.53	16	
	802.11n (HT20)	2 412	V	1.7	175	38.46	31.88	70.34	-24.92	-0.59	-24.33	16	
		2 442	V	1.7	175	39.12	32.07	71.19	-24.07	-0.23	-23.84	16	
		2 472	V	1.7	175	39.66	32.05	71.71	-23.55	0.76	-24.31	16	

5 GHz [EN 301 893] Power

Ant 0 [Internal Antenna]													
Band	Mode	Freq. (MHz)	Maximum Conducted Power (Radiated)										
			Polarization (H / V)	Antenna Height (m)	Angle (°)	OBW (MHz)	Measured (dBuV)	Correction Factor (dB)	Result (dBuV/m)	E.I.R.P (dBm)	Ant Gain (dBi)	Conducted Power (dBm)	Target Setting
WLAN 5 GHz (U-NII 1)	802.11a	5 180	H	1.7	290	16.48	62.61	38.04	100.65	5.39	0.32	5.07	6
		5 220	H	1.7	290	16.48	61.73	38.05	99.78	4.52	-0.37	4.89	5
		5 240	H	1.7	290	16.43	61.76	37.86	99.62	4.36	-1.04	5.40	5
	802.11n (HT20)	5 180	H	1.7	290	17.58	63.67	38.04	101.71	6.45	0.57	5.88	7
		5 220	H	1.7	290	17.58	62.75	38.05	100.80	5.54	-0.22	5.76	6
		5 240	H	1.7	290	17.58	61.82	37.86	99.68	4.42	-0.85	5.27	5
	802.11n (HT40)	5 190	H	1.7	290	36.26	63.94	38.08	102.02	6.76	0.63	6.13	7
		5 230	H	1.7	290	36.36	62.83	37.9	100.73	5.47	-0.85	6.32	6
	802.11ac (VHT80)	5 210	H	1.7	290	76.52	62.93	38.25	101.18	5.92	-0.02	5.94	6

Ant 0 [Internal Antenna]													
Band	Mode	Freq. (MHz)	Power Spectral Density (Radiated)										
			Polarization (H / V)	Antenna Height (m)	Angle (°)	OBW (MHz)	Measured (dBuV)	Correction Factor (dB)	Result (dBuV/m)	E.I.R.P Density (dBm)	Ant Gain (dBi)	Conducted Power (dBm)	Target Setting
WLAN 5 GHz (U-NII 1)	802.11a	5 180	V	1.7	290		51.76	38.04	89.80	-5.46	0.53	-5.99	6
		5 220	V	1.7	290		50.70	38.05	88.75	-6.51	-0.45	-6.06	5
		5 240	V	1.7	290		50.97	37.86	88.83	-6.43	-1.10	-5.33	5
	802.11n (HT20)	5 180	H	1.7	290		52.66	38.04	90.70	-4.56	0.73	-5.29	7
		5 220	H	1.7	290		51.69	38.05	89.74	-5.52	-0.12	-5.40	6
		5 240	H	1.7	290		50.51	37.86	88.37	-6.89	-1.05	-5.84	5
	802.11n (HT40)	5 190	H	1.7	290		50.01	38.08	88.09	-7.17	1.02	-8.19	7
		5 230	H	1.7	290		49.11	37.90	87.01	-8.25	-0.75	-7.50	6
	802.11ac (VHT80)	5 210	H	1.7	290		45.36	38.25	83.61	-11.65	-0.42	-11.23	6

5 GHz [EN 301 893] Power

Ant 1 [External Antenna]													
Band	Mode	Freq. (MHz)	Maximum Conducted Power (Radiated)										
			Polarization (H / V)	Antenna Height (m)	Angle (°)	OBW (MHz)	Measured (dBuV)	Correction Factor (dB)	Result (dBuV/m)	E.I.R.P (dBm)	Ant Gain (dBi)	Conducted Power (dBm)	Target Setting
WLAN 5 GHz (U-NII 1)	802.11a	5 180	V	1.7	230	16.88	62.61	38.04	100.65	5.39	2.21	3.18	11
		5 220	V	1.7	230	16.93	62.54	38.05	100.59	5.33	2.11	3.22	11
		5 240	V	1.7	230	17.18	62.17	37.86	100.03	4.77	1.41	3.36	11
	802.11n (HT20)	5 180	V	1.7	230	17.78	63.61	38.04	101.65	6.39	2.20	4.19	12
		5 220	V	1.7	230	17.78	63.56	38.05	101.61	6.35	2.07	4.28	12
		5 240	V	1.7	230	18.08	63.16	37.86	101.02	5.76	1.39	4.37	12
	802.11n (HT40)	5 190	V	1.7	230	36.46	63.47	38.08	101.55	6.29	2.02	4.27	12
		5 230	V	1.7	230	36.46	63.50	37.9	101.40	6.14	1.73	4.41	12
	802.11ac (VHT80)	5 210	V	1.7	230	77.32	63.69	38.25	101.94	6.68	2.14	4.54	12

Ant 1 [External Antenna]													
Band	Mode	Freq. (MHz)	Power Spectral Density (Radiated)										
			Polarization (H / V)	Antenna Height (m)	Angle (°)	OBW (MHz)	Measured (dBuV)	Correction Factor (dB)	Result (dBuV/m)	E.I.R.P Density (dBm)	Ant Gain (dBi)	Conducted Power (dBm)	Target Setting
WLAN 5 GHz (U-NII 1)	802.11a	5 180	V	1.7	230		51.90	38.04	89.94	-5.32	2.54	-7.86	11
		5 220	V	1.7	230		51.70	38.05	89.75	-5.51	1.82	-7.33	11
		5 240	V	1.7	230		51.54	37.86	89.40	-5.86	1.63	-7.49	11
	802.11n (HT20)	5 180	V	1.7	230		53.03	38.04	91.07	-4.19	3.00	-7.19	12
		5 220	V	1.7	230		52.40	38.05	90.45	-4.81	2.19	-7.00	12
		5 240	V	1.7	230		52.07	37.86	89.93	-5.33	1.55	-6.88	12
	802.11n (HT40)	5 190	V	1.7	230		50.06	38.08	88.14	-7.12	2.62	-9.74	12
		5 230	V	1.7	230		49.62	37.9	87.52	-7.74	2.14	-9.88	12
	802.11ac (VHT80)	5 210	V	1.7	230		46.10	38.25	84.35	-10.91	2.10	-13.01	12

5 GHz [EN 300 440] Power

Ant 0 [Internal Antenna]													
Band	Mode	Freq. (MHz)	Maximum Conducted Power (Radiated)										
			Polarization (H / V)	Antenna Height (m)	Angle (°)	OBW (MHz)	Measured (dBuV)	Correction Factor (dB)	Result (dBuV/m)	E.I.R.P (dBm)	Ant Gain (dBi)	Conducted Power (dBm)	Target Setting
WLAN 5 GHz (U-NII 3)	802.11a	5 745	V	1.7	350	16.43	70.68	38.68	109.36	14.10	-1.19	15.29	16
		5 785	V	1.7	350	16.43	69.63	38.92	108.55	13.29	-1.93	15.22	16
		5 825	V	1.7	350	16.43	69.20	38.98	108.18	12.92	-1.96	14.88	16
	802.11n (HT20)	5 745	V	1.7	350	17.58	71.68	38.68	110.36	15.10	-1.04	16.14	17
		5 785	V	1.7	350	17.63	70.73	38.92	109.65	14.39	-1.77	16.16	17
		5 825	V	1.7	350	17.58	70.24	38.98	109.22	13.96	-1.89	15.85	17
	802.11n (HT40)	5 755	V	1.7	350	36.26	70.32	38.66	108.98	13.72	-1.47	15.19	16
		5 795	V	1.7	350	36.26	69.57	38.91	108.48	13.22	-1.91	15.13	16
	802.11ac (VHT80)	5 775	V	1.7	350	76.52	66.22	38.98	105.20	9.94	-1.75	11.69	12

Ant 0 [Internal Antenna]													
Band	Mode	Freq. (MHz)	Power Spectral Density (Radiated)										
			Polarization (H / V)	Antenna Height (m)	Angle (°)	OBW (MHz)	Measured (dBuV)	Correction Factor (dB)	Result (dBuV/m)	E.I.R.P Density (dBm)	Ant Gain (dBi)	Conducted Power (dBm)	Target Setting
WLAN 5 GHz (U-NII 3)	802.11a	5 745	V	1.7	350	56.66	38.68	95.34	0.08	-1.31	1.39	16	
		5 785	V	1.7	350	56.02	38.92	94.94	-0.32	-1.60	1.28	16	
		5 825	V	1.7	350	55.50	38.98	94.48	-0.78	-1.96	1.18	16	
	802.11n (HT20)	5 745	V	1.7	350	57.55	38.68	96.23	0.97	-1.19	2.16	17	
		5 785	V	1.7	350	56.48	38.92	95.40	0.14	-2.32	2.46	17	
		5 825	V	1.7	350	56.12	38.98	95.10	-0.16	-1.81	1.65	17	
	802.11n (HT40)	5 755	V	1.7	350	53.57	38.66	92.23	-3.03	-1.11	-1.92	16	
		5 795	V	1.7	350	52.66	38.91	91.57	-3.69	-1.72	-1.97	16	
	802.11ac (VHT80)	5 775	V	1.7	350	46.02	38.98	85.00	-10.26	-1.36	-8.90	12	

5 GHz [EN 300 440] Power

Ant 1 [External Antenna]													
Band	Mode	Freq. (MHz)	Maximum Conducted Power (Radiated)										
			Polarization (H / V)	Antenna Height (m)	Angle (°)	OBW (MHz)	Measured (dBuV)	Correction Factor (dB)	Result (dBuV/m)	E.I.R.P (dBm)	Ant Gain (dBi)	Conducted Power (dBm)	Target Setting
WLAN 5 GHz (U-NII 3)	802.11a	5 745	V	1.7	255	16.48	67.52	38.68	106.20	10.94	2.41	8.53	16
		5 785	V	1.7	255	16.48	68.15	38.92	107.07	11.81	3.61	8.20	16
		5 825	V	1.7	255	16.48	67.31	38.98	106.29	11.03	2.99	8.04	16
	802.11n (HT20)	5 745	V	1.7	255	17.53	68.47	38.68	107.15	11.89	2.34	9.55	17
		5 785	V	1.7	255	17.63	69.11	38.92	108.03	12.77	3.59	9.18	17
		5 825	V	1.7	255	17.58	68.34	38.98	107.32	12.06	3.00	9.06	17
	802.11n (HT40)	5 755	V	1.7	255	36.36	67.57	38.66	106.23	10.97	2.51	8.46	16
		5 795	V	1.7	255	36.36	67.73	38.91	106.64	11.38	3.05	8.33	16
	802.11ac (VHT80)	5 775	V	1.7	255	76.92	63.97	38.98	102.95	7.69	3.03	4.66	12

Ant 1 [External Antenna]													
Band	Mode	Freq. (MHz)	Power Spectral Density (Radiated)										
			Polarization (H / V)	Antenna Height (m)	Angle (°)	OBW (MHz)	Measured (dBuV)	Correction Factor (dB)	Result (dBuV/m)	E.I.R.P Density (dBm)	Ant Gain (dBi)	Conducted Power (dBm)	Target Setting
WLAN 5 GHz (U-NII 3)	802.11a	5 745	V	1.7	255	53.99	38.68	92.67	-2.59	2.67	-5.26	16	
		5 785	V	1.7	255	54.74	38.92	93.66	-1.60	4.20	-5.80	16	
		5 825	V	1.7	255	54.04	38.98	93.02	-2.24	3.83	-6.07	16	
	802.11n (HT20)	5 745	V	1.7	255	54.69	38.68	93.37	-1.89	2.64	-4.53	17	
		5 785	V	1.7	255	55.76	38.92	94.68	-0.58	4.38	-4.96	17	
		5 825	V	1.7	255	54.40	38.98	93.38	-1.88	3.29	-5.17	17	
	802.11n (HT40)	5 755	V	1.7	255	50.76	38.66	89.42	-5.84	2.73	-8.57	16	
		5 795	V	1.7	255	51.17	38.91	90.08	-5.18	3.74	-8.92	16	
	802.11ac (VHT80)	5 775	V	1.7	255	43.73	38.98	82.71	-12.55	3.38	-15.93	12	

[FCC Power 관련 사항]

※ Measured Value에 Duty Factor 보정된 값임
 ※ Correction Factor = Antenna Factor + Cable Loss

2.4 GHz [EN 300 328] Power

Ant 0 [Internal Antenna]													
Maximum Conducted Power (Radiated)													
Band	Mode	Freq. (MHz)	Polarization (H / V)	Antenna Height (m)	Angle (°)	OBW (MHz)	Measured (dBuV)	Correction Factor (dB)	Result (dBuV/m)	E.I.R.P (dBm)	Ant Gain (dBi)	Conducted Power (dBm)	Target Setting
Bluetooth	BDR (1 Mbps)	2 402	V	1.7	175	0.883	63.84	31.88	95.72	0.46	-0.16	0.62	16
		2 441	V	1.7	175	0.883	64.19	32.07	96.26	1.00	0.32	0.68	16
		2 480	V	1.7	175	0.883	64.85	32.05	96.90	1.64	0.89	0.75	16
	EDR (2 Mbps)	2 402	V	1.7	175	1.172	65.67	31.88	97.55	2.29	-0.44	2.73	16
		2 441	V	1.7	175	1.172	66.19	32.07	98.26	3.00	0.18	2.82	16
		2 480	V	1.7	175	1.172	66.88	32.05	98.93	3.67	0.80	2.87	16
	EDR (3 Mbps)	2 402	V	1.7	175	1.187	65.97	31.88	97.85	2.59	-0.42	3.01	16
		2 441	V	1.7	175	1.187	66.43	32.07	98.50	3.24	0.15	3.09	16
		2 480	V	1.7	175	1.187	66.91	32.05	98.96	3.70	0.52	3.18	16

Worst Ant Gain (Calculated)		
Band	Peak Gain (Ant 0)	Peak Gain (Ant 1)
2.4 GHz	0.89 dBi	2.18 dBi
5.2 GHz	0.63 dBi	2.37 dBi
5.8 GHz	-1.04 dBi	3.61 dBi