

TECHNICAL JUSTIFICATION

6 Aug 2022

We, LG Electronics Inc., as a manufacturer of following product, hereby declare the product has hardware changes.

	Basic	New
FCC ID	BEJ-TM04ANNABM0	BEJTM04ANNABM2
Grant Date	14 July 2020	-
ISED	2703H-TM04ANNABM0	2703H-TM04ANNABM2
Approval Date	30 July 2020	-

1. Band differences between TM04ANNABM0 and TM04ANNABM2

Band	Tx	Rx	TM04ANNABM0	TM04ANNABM2
B1	1920~1980	2110~2170	W, L	
B2	1850~1910	1930~1990	G, W, L	G, W, L
B3	1710~1785	1805~1880	W, L	
B4	1710~1755	2110~2155	W, L	W, L
B5	824~849	869~894	G, W, L	G, W, L
B7	2500~2570	2620~2690	L	L
B10	1710~1770	2110~2170	L	L
B12(B17)	699~716	729~746	L	L
B13	777~787	746~756	L	L
B20	832~862	791~821	L	
B25	1850~1915	1930~1995	L	L
B26	814~849	859~894	L	
B29	-	717~728	L(RX only)	L(RX only)
B30	(2305~2315)	2350~2360	L(RX only)	L(RX only)
B41	2496~2690		L	L
B66	1710~1780	2110~2200	L	L
B71	663~698	617~652	L	L

- G(GSM), W(WCDMA), T(TD-SCDMA), L(LTE)

Band Differences

WCDMA 1, LTE 1

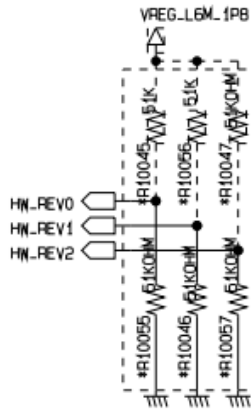
WCDMA 3, LTE 3

LTE 20, 26 are disabled on TM04ANNABM2. All other bands are identical with original model.

2. CIRCUIT DIFFERENCE

TM04ANNABM2 HW revision resistors are differ with TM04ANNABM0. This is only used for model identifiaciton and not related to any RF/EMC characteristics.

HW Revision Info.

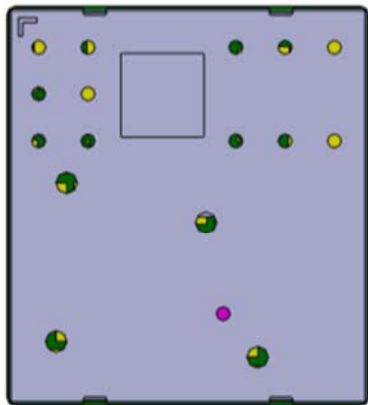


Reserved		0	1
Reserved		1	0
Reserved		1	1

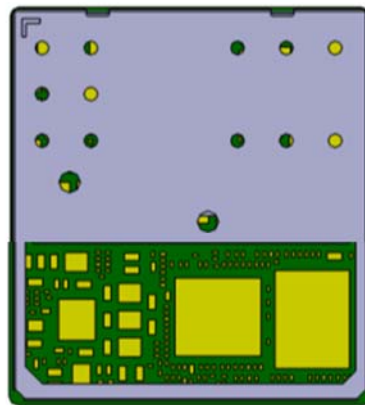
WAVE_LOW	HW_REV0	HW_REV1	HW_REV2
Rev. D0	0	0	0
Reserved		0	1
Reserved		1	0
Reserved		1	1
Reserved		0	0
Reserved		0	1
Reserved		1	0
Reserved		1	1

3. SHIELD CAN DIFFERENCE

Shape of shield can has difference as below.



TM04ANNABM0



TM04ANNABM2

Evaluation

We compared band information, components differences and conduction power between TM04ANNABM0 and TM04ANNABM2. It is concluded that there is no difference for RF performance of TM04ANNABM2's bands between TM04ANNABM0 and TM04ANNABM2.

Seungho Hur
Manager
LG Electronics Inc.