

LG Electronics Inc.

Home Appliance Company, EMC Center

391-2, Ga Eum Jeong – Dong, Seongsan – Gu, Changwon City, Gyeong Nam
641-711, KOREA
Tel: + 82 55 260 3966, Fax: +82 55 268 4530

CERTIFICATION OF COMPLIANCE

Date of Issue: April 10, 2013

Test Report No: 13-EMUS-0032

Test Site: LG Electronics Changwon EMC Center

Applicant:	LG Electronics Inc.
Regulation:	FCC Part 18 – ISM Consumer Device
Test Procedure:	MP-5: 1985
Equipment Class:	Industrial, Scientific, and Medical equipment
EUT Type:	Microwave oven
Magnetron Type:	2M214 (LG)
Brand Name(s):	LG
Model No.:	MV1843ASDL (Buyer model No.: LMV1831ST)
FCC ID:	BEJS184TVA

This device has been verified to comply with the applicable requirements in the FCC Part 18 and was tested in accordance with the measurement procedures specified in MP-5: 1985.

I assure full responsibility for the completeness of these measurements and vouch for the qualifications of all persons taking them.



Kim Dae Woong/ Chief Research Engineer
Home Appliance Company,
EMC Center
LG Electronics Inc.

REPORT FOR A MICROWAVE OVEN

Scope - Measurement and determination of electromagnetic emissions (EME) of radio frequency devices including intentional and/or unintentional radiators for compliance with the technical rules and regulations of the Federal Communications Commission

EUT Type:	Microwave oven
Model No.:	MV1843ASDL (Buyer model No.: LMV1831ST)
FCC ID:	BEJS184TVA
Rule Part:	FCC Part 18
Test Procedure:	MP-5: 1985
Date of Test:	March 25, 2013 – March 27, 2013
Date of Issue:	April 10, 2013
Test Result:	Pass

EMC Center authorizes the above-named applicant to reproduce this report provided it is reproduced in its entirety.

EMC Center reports apply only to the specific sample(s) tested under stated test conditions. It is the manufacturer's responsibilities to assure that additional production unit of this model are manufactured with identical electrical and mechanical components.

This report is the confidential property of the client. As a mutual protection to our clients, the public and ourselves, extracts from the test report shall not be reproduced except in full without our written approval.

This report must not be used by the client to claim product endorsement by any agency of the U.S. Government.

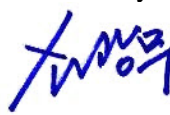
The EMC Center facilities has been placed on file and the name of our organization added to the FCC's list for the FCC Part 15 and 18 of the Commission's Rules under Registration Number 93197.

Tested by:



Kim Tae Yul / Research Engineer
Home Appliance Company,
EMC Center
LG Electronics Inc.

Reviewed by:



Son Kwang Mu / Chief Research Engineer
Home Appliance Company,
EMC Center
LG Electronics Inc.

CONTENTS

	Page
1. CLIENT INFORMATION.....	3
2. EQUIPMENT UNDER TEST (EUT).....	3
3. TEST SITE.....	4
4. CALIBRATIONS OF MEASURING INSTRUMENT.....	4
5. DESCRIPTION OF TEST CONDITION.....	4
5.1 POWER LINE CONDUCTED EMISSION MEASUREMENTS	4
5.2 RADIATED EMISSIONS MEASUREMENT.....	5
6. MEASURING INSTRUMENT.....	9
7. TEST DATA.....	10
7.1 INPUT POWER.....	10
7.2 RF POWER OUTPUT MEASUREMENT ACCORDING TO MP-5.....	10
7.3 RF POWER OUTPUT MEASUREMENT ACCORDING TO IEC 60705.	11
7.4 FREQUENCY MEASUREMENTS.....	12
7.5 POWER DENSITY SAFETY CHECK	13
7.6 CONDUCTED EMISSIONS (SECTION 18.307).....	13
7.7 RADIATED EMISSIONS (SECTION 18.305)	14
APPENDIX A. TEST PLOT.....	15
APPENDIX B. LABELING REQUIREMENTS.....	19
APPENDIX C. BLOCK DIAGRAM / SCHEMATICS.....	20
APPENDIX D. TEST PHOTOS.....	22
APPENDIX E. EUT PHOTOS.....	23
APPENDIX F. OWNER'S MANUAL WITH REGARD TO FCC INSTRUCTION.....	29

1. CLIENT INFORMATION

The EUT has been tested by request of:

Company: 1. LG Electronics Inc. Cooking & Cleaning Division
(Manufacturer) 391-2, Ga Eum Jeong - Dong, Seongsan – Gu, Changwon City,
Gyeong Nam, 641-711, Korea
2. LG Electronics Tianjin Appliance Co., Ltd.
Xing Dian Road, Bei Chen Distr., Tianjin 300402,
People's Republic of China
Name of contact: Mi Ran Park
Telephone: +82-55-260-3463
Fax: +82-55-268-4783

2. EQUIPMENT UNDER TEST (EUT)

EUT is the LG Electronics Inc. Microwave Oven as followings:

Equipment: Microwave oven
Model: MV1843ASDL (Buyer model No.: LMV1831ST)
Brand name: LG
Serial number: N/A
Magnetron: 2M214 by LG
RF Frequency: 2,450 ± 50 MHz
RF Power Output (IEC 705): 1000 W
Power Consumption
 Microwave Mode: 1600 W
Rated Input Voltage: 120 V~, 60 Hz
Rated Input Current
 Microwave Mode: 14.0 A
Cavity Volume: 1.8 Cu.ft
Oven Type: Over the range / Household
Mode Stirrer: Turntable and Stirrer
Power Cord: Shielded
Outer Dimensions (inch) 29.9 (W) * 16.5 (H) * 17.0 (D)

EMI suppression device(s) installed in production: See schematics (Appendix C & E)

EMI suppression device(s) added and/or modified during test: None

3. TEST SITE

Measurement of radiated emissions from EUT was made at semi-anechoic chamber that has been in compliance with Federal Communications Commissions (FCC) requirements of clause 2.948 according to ANSI C63.4-2001 on April 20, 2012.

4. CALIBRATIONS OF MEASURING INSTRUMENT

All measurement was made with instruments calibrated according to the recommendation by manufacturer. Measurement of radiated emissions and power line conducted emissions were made with instruments conforming to American National Standard Specification, ANSI C63.4-2001. The calibration of measuring instrument, including any accessories that may affect test results, was performed according to the recommendation by manufacturer.

5. DESCRIPTION OF TEST CONDITION

5.1 Power line conducted emission measurements

Power line conducted emission measurements were based on the std. CISPR 11:2009+A1:2010.

5.1.1 Shielded enclosure

The measurement for power-line emissions from EUT was made in shielded enclosure that provides sufficient shielding effectiveness enough not to affect test results.

5.1.2 Detector function selection and bandwidth

During conducted emission measurement, a radio noise meter that has a CISPR quasi-peak detector with 10 kHz IF bandwidth of 6 dB was utilized.

5.1.3 Frequency range to be scanned

For conducted emissions measurement, frequency range of 150 kHz to 30 MHz included was investigated.

5.1.4 Unit of measurement

Test results for conducted emissions are reported in micro-volt.

5.1.5 Line impedance stabilization network (LISN)

A LISN with characteristics that conform to the requirements of ANSI C63.4-2001 was used for the measurement of conducted power-line radio noise; (50 micro-henries / 50 ohms). Chassis and earth-points for grounding of the LISN were earth-grounded.

5.1.6 Test conditions and configuration of EUT

The EUT was configured and operated in all modes of operation so as to find the maximum enumeration of emissions from EUT.

The EUT has designed to use the public AC lines with rated AC voltage as specified in owner's manual and Installation's manual of EUT and filtered to meet the requirement. AC

power was supplied to the EUT through LISN with characteristics described in 5.1.5 of part I of this report.

The EUT was placed on a 1 m×1.5 m×40 cm high wooden table which is placed on the earth-grounded conducting surface larger than 2 square meter. The vertical conducting surface was replaced with horizontal ground plane. Length of the power lead in excess of 80 cm horizontally separating the EUT from LISN was folded back-and-forth form at the center of the power cord not exceeding 40 cm in length.

The EUT was operated with a load of 1000 ml water initially at 20 ± 5 °C placed at the center of the load-carrying surface.

Each type of accessory provided by manufacturer or typically used and support equipment were connected to the EUT during measurement to the typical usage and applicable as nearly as practicable.

5.1.7 Measurement uncertainty

The measurement uncertainty describes the overall uncertainty of the given measured value during the operation of the EUT in the above-mentioned way.

The measurement uncertainty was calculated in accordance with NAMAS NIS 81: "The treatment of uncertainty in EMC measurement."
For calculated uncertainty of each item, refer the next page.

The measurement uncertainty was given with a confidence of 95%.

5.2 Radiated emissions measurement

5.2.1 Test site

Measurement was made in semi-anechoic chamber as described at Clause 3 in this report.

5.2.2 Detector function selection and bandwidth

In radiated emissions measurement, field strength meter that has CISPR quasi-peak and average detector was used. The bandwidth of the detector of instrument is 120 kHz for frequency range of 30 MHz – 1,000 MHz, and 1 MHz for frequency range of 1 GHz to 26 GHz. Emissions be measured are detected in average mode.

5.2.3 Unit of measurement

Test results of radiated emissions measurement are reported in microvolts per meter at the specific distance. Using the unit of dBμV on the test instrument, the indication unit was converted to field strength unit of μV/m as following method;

$$F / S = 10^{(R+AF+CF)/20} (\mu V/m)$$

here,

F / S: Field Strength in μV/m, R: Meter Reading Level in dB(μV),

AF: Antenna Factor in dB/m

CF: Conversion Factor

* 30 MHz ~ 1 GHz: CF = CL

* Above 1 GHz: CF = CL – PG + FL + AL

CL: Cable Loss (dB)

FL: Filter Loss (dB)

PG: Preamplifier Gain (dB)

AL: Attenuator Loss (dB)

5.2.4 Antennas

Measurements were made using calibrated biconical antenna in range of 30 MHz to 300 MHz, log-periodic antenna in range of 300 MHz to 1,000 MHz and horn antenna in range of 1 to 26 GHz to determine the emission characteristics of the EUT. Measurements were also made for both horizontal and vertical polarization.

The horizontal distance between the receiving antenna and the closest periphery of the EUT was 3 meters for horn antenna and 10 meters for biconical and log-periodic antenna.

5.2.5 Frequency range to be scanned

For radiated emissions measurements, the spectrum in the range of 30 to 1,000 MHz and above, if found, was investigated.

5.2.6 Test conditions and configuration of EUT

The EUT was configured and operated in all modes of operation so as to find the maximum RF energy generated from EUT.

The power was furnished with rated (normal) AC 120 volts, as specified in the Owner's manual of EUT. The EUT was placed on a 1 m high non-metallic table. The turntable containing the system was rotated and the antenna height was varied 4 m to find the maximum RF energy detected from EUT.

Each type of accessory provided by manufacturer or typically used and support equipment were connected to the EUT during measurement to the typical usage and applicable as nearly as practicable.

5.2.7 Measurement uncertainty

The measurement uncertainty describes the overall uncertainty of the given measured value during the operation of the EUT in mentioned above way.

The measurement uncertainty was calculated in accordance with NAMAS NIS 81: "The treatment of uncertainty in EMC measurement."

For calculated uncertainty of each item, refer the next page.

The measurement uncertainty was given with a confidence of 95%.

< Fundamental Frequency Uncertainty (2,450 MHz) >

Symbol	Contribution	Value (dB)		Probability Distribution	Divisor	Standard Uncertainty	Standard Uncertainty Squared
		3 m				Horn Antenna	
						(Value / Divisor)	
V ₁	Ambient signals				1	0.00	0.0
V ₂	Antenna factor calibration	Expanded Uncertainty	0.69	normal (k = 2)	2	0.35	0.1
V ₃	Cable loss calibration	Expanded Uncertainty	1.0	normal (k = 2)	2	0.50	0.3
V ₄	Receiver specification	Tolerance	1.0	rectangular	1.732	0.58	0.3
V ₅	Measurement distance variation	Tolerance	0.5	rectangular	1.732	0.29	0.1
V ₆	Site imperfections	Tolerance	1.0	rectangular	1.732	0.58	0.3
V ₇	Mismatch Receiver VRC: J ₁ = 0.33 Antenna VRC: J _g = 0.20 Uncertainty limits 20Log(1 ± J ₁ J _g)	Tolerance	1.0	rectangular	1.732	0.58	0.3
V ₈	System repeatability (previous assessment of s(q _k) from 5 repeats, 1 reading on EUT Repeatability of EUT*)		0.5	Std Deviation	1	0.50	0.3
	Combined standard uncertainty u _c (y)		1.30	normal			
	Expanded uncertainty U		2.61	normal (k = 2)			

$$u_c(y) = \sqrt{\left(\frac{0.0}{1}\right)^2 + \left(\frac{0.7}{2}\right)^2 + \left(\frac{1.0}{2}\right)^2 + \frac{1.0^2 + 0.5^2 + 1.0^2}{3} + \frac{1^2}{2} + 0.5^2}$$

The level of confidence will be approximately 95%. (The coverage factor: k=2)

$$U = 2 u_c(y) = 2 \times 1.30 = \pm 2.6 \text{ dB}$$

< Radiated Emission Uncertainty (Above 1 GHz) >

Symbol	Contribution	Value (dB)		Probability Distribution	Divisor	Standard Uncertainty	Standard Uncertainty Squared
		3 m				Horn Antenna	
						(Value / Divisor)	
V ₁	Ambient signals			-	1	0.00	0.0
V ₂	Antenna factor calibration #1	Expanded Uncertainty	0.69	normal (k = 2)	2	0.35	0.1
V ₃	Antenna factor calibration #2	Expanded Uncertainty	0.69	normal (k = 2)	2	0.35	0.1
V ₄	Cable loss calibration	Expanded Uncertainty	1.0	normal (k = 2)	2	0.50	0.3
V ₅	Receiver specification	Tolerance	1.0	rectangular	1.732	0.58	0.3
V ₆	Highpass filter	Tolerance	0.23	rectangular	2	0.12	0.0
V ₇	Measurement distance variation	Tolerance	0.5	rectangular	1.732	0.29	0.1
V ₈	Site imperfections	Tolerance	1.0	rectangular	2	0.50	0.3
V ₉	Mismatch Receiver VRC: ξ ₁ = 0.09 Antenna VRC: ξ _g = 0.2 Uncertainty limits 20Log(1 ± ξ ₁ ξ _g)	Tolerance	0.15	U-shaped	1.414	0.11	0.0
V ₁₀	System repeatability (previous assessment of s(q _k) from 5 repeats, 1 reading on EUT Repeatability of EUT*)		0.5	Std Deviation	1	0.50	0.3
	Combined standard uncertainty u _c (y)		1.20	normal			
	Expanded uncertainty U		2.39	normal (k = 2)			

$$u_c(y) = \sqrt{\left(\frac{0.0}{1}\right)^2 + \left(\frac{0.7}{2}\right)^2 + \left(\frac{0.7}{2}\right)^2 + \left(\frac{1.0}{2}\right)^2 + \frac{1.0^2}{3} + \left(\frac{0.23}{2}\right)^2 + \frac{0.5^2}{3} + \left(\frac{1.0}{2}\right)^2 + \frac{0.15^2}{2} + 0.5^2}$$

The level of confidence will be approximately 95%. (The coverage factor: k=2)

$$U = 2 u_c(y) = 2 \times 1.20 = \pm 2.4 \text{ dB}$$

< Electric Field Strength Uncertainty (30 MHz – 1 GHz) >

Symbol	Contribution	Value (dB)		Probability Distribution	Divisor	Standard Uncertainty	Standard Uncertainty Squared
			10 m			UltraLog Antenna (Value / Divisor) 10 m	
V ₁	Ambient signals			Std Deviation	1	0.00	0.0
V ₂	Antenna factor calibration	Tolerance	0.7	rectangular	2	0.35	0.1
V ₃	Cable loss calibration	Expanded Uncertainty	1.0	normal (k = 2)	2	0.50	0.3
V ₄	Receiver specification	Tolerance	1.0	rectangular	1.732	0.58	0.3
V ₅	Antenna directivity	Tolerance	1.0	rectangular	1.732	0.58	0.3
V ₆	Antenna factor variation with height	Tolerance	2.0	rectangular	1.732	1.15	1.3
V ₇	Antenna phase center variation	Tolerance	0.5	rectangular	1.732	0.3	0.1
V ₈	Antenna factor frequency interpolation	Tolerance	0.25	rectangular	1.732	0.14	0.0
V ₉	Measurement distance variation	Tolerance	0.5	rectangular	1.732	0.29	0.1
V ₁₀	Site imperfections	Tolerance	1.0	normal	2	0.50	0.3
V ₁₁	Mismatch Receiver VRC: (₁ = 0.09 Antenna VRC: (_g = 0.33 Uncertainty limits 20Log(1± (₁ (_g)	Tolerance	0.25	U-shaped	1.414	0.18	0.0
V ₁₂	System repeatability (previous assessment of s(q _k) from 5 repeats, 1 reading on EUT Repeatability of EUT*		0.5	Std Deviation	1	0.50	0.3
	Combined standard uncertainty u _c (y)		1.76	normal	2		
	Expanded uncertainty U		3.51	normal (k = 2)	2		

$$u_c(y) = \sqrt{\left(\frac{0.0}{1}\right)^2 + \left(\frac{0.7}{2}\right)^2 + \left(\frac{1.0}{2}\right)^2 + \frac{1.0^2 + 1.0^2 + 2.0^2 + 0.5^2 + 0.25^2 + 0.5^2}{3} + \left(\frac{1.0}{2}\right)^2 + \frac{0.25^2}{2} + 0.5^2}$$

The level of confidence will be approximately 95%. (The coverage factor: k=2)

$$U = 2 u_c(y) = 2 \times 1.76 = \pm 3.5 \text{ dB}$$

< Line Conducted Uncertainty >

Symbol	Contribution	Value (dB)		Probability Distribution	Divisor	Standard Uncertainty (dB)	Standard Uncertainty Squared
						150 kHz - 30 MHz (Value / Divisor)	
V ₁	Receiver specification	Tolerance	1.0	rectangular	1.732	0.58	0.3
V ₂	LISN coupling specification	Tolerance	1.0	rectangular	1.732	0.58	0.3
V ₃	Cable and input attenuator calibration	Expanded Uncertainty	1	normal (k = 2)	2	0.50	0.3
V ₄	Mismatch Receiver VRC: ₁ = 0.09 LISN VRC: _g = 1.0 Uncertainty limits 20Log(1± ₁ _g)	Tolerance	0.75	U-shaped	1.414	0.53	0.281
V ₅	System repeatability (previous assessment of s(q _k) from 10 repeats, 1 reading on EUT)		0.50	standard deviation	1	0.50	0.25
	Combined standard uncertainty u _c (y)		1.20	normal			
	Expanded uncertainty U		2.41	normal (k = 2)			

$$u_c(y) = \sqrt{\frac{1.0^2 + 1.0^2}{3} + \left(\frac{1.0}{2}\right)^2 + \frac{0.75^2}{2} + 0.50^2} = 1.2$$

The level of confidence will be approximately 95%. (The coverage factor: k=2)

$$U = 2 u_c(y) = 2 \times 1.20 = \pm 2.40 \text{ dB}$$

6. MEASURING INSTRUMENT

Instrument	Model	Cal. Due date	Serial No.	Control No.
Accessory Kit	-	-	7044/45-002	99-IRE-16
Microwave Amp	8449B	10/23/2013	3008A01821	02-IRE-33
Horn Antenna	RGA-180 (Electro Metrics)	09/06/2013	2517	99-IRE-22
	RGA-60 (Electro Metrics)	09/11/2014	6104	99-IRE-21
Antenna Master	2070-2 (EMKO)	-	9903-2231	99-IRE-23
Ultra Log Antenna	HL562 (Chase)	08/11/2013	830547/007	99-IRE-26
High Pass Filter	11SH10-4500/ X1800-010	10/23/2013	2	99-IRE-07
EMI Receiver	ESI26 (R&S)	10/23/2013	835336/008	00-IRE-30
	ESU26 (R&S)	10/24/2013	100164	08-IRE-36
LISN	ESH2-Z5 (R&S)	05/21/2013	100081	03-2ICE-03
Microwave Cable	Sucoflex 104	-	125484/4	-
Microwave Cable	Sucoflex 106	-	13417/6	-
Microwave Cable	Sucoflex 106	-	13419/6	-
Microwave Cable	Sucoflex 106	-	13418/6	-
Microwave Cable	Sucoflex 104	-	125483/4	-
Microwave Cable	Sucoflex 104	-	12548/4	-
Microwave Cable	Sucoflex 106	-	13416/6	-
Microwave Cable	Sucoflex 106	-	13416/6	-
Microwave Cable	Sucoflex 104PE	-	46894/4PE	-
Microwave Cable	Sucoflex 104PE	-	46895/PE	-
Semi Anechoic Chamber	YES INC.	-	-	99-CFA-01
Shield Screen Room	YES INC.	-	-	99-CFA-02
Microwave Survey Meter	Holaday HI-1710/HI-2623	02/01/2014	93083	FJZ431HA

7. TEST DATA

7.1 Input Power

The input power was measured using Wattmeter. A 275 ml water load in a polypropylene beaker is placed in the center of the oven. The 275 ml water was chosen for its compatibility with UL procedure to determine input ratings. The oven was operated at the rated input and full output power for 6 minutes.

1) Magnetron type: 2M214 by LG

<u>Mode</u>	<u>Input Voltage</u>	<u>Current [A]</u>	<u>Power Consumption</u> [W]	<u>Manufacturer</u> <u>Rating [A]</u>
Microwave	120 Vac, 60 Hz	13.2	1522	14.0

7.2 RF Power Output Measurement according to MP-5.

The Calorimetric Method was used to determine maximum output power. A 1,000 ml water load was placed in the center of the oven. A mercury thermometer was used to measure temperature rise. The test method was described in MP-5.

1) Magnetron type: 2M214 by LG

$$\text{Power [W]} = \frac{(4.187 \text{ Joules/Cal}) * (\text{Volume in ml}) * (\text{Temperature Rise})}{\text{Time in Seconds}}$$

<u>Quantity of Water</u>	<u>Starting Temperature</u>	<u>Final Temperature</u>	<u>Elapsed Time</u>
1,000 ml	19.4 °C	38.5 °C	120 Sec

$$\text{Power [W]} = \frac{4.187 * 1,000 * 19.1}{120}$$

$$\text{Power [W]} = 666.4 \text{ Watts}$$

7.3 RF Power Output Measurement according to IEC 60705.

The test was performed according to the IEC Publication 60705/1999.

A cylindrical container of borosilicate glass was used. It has a maximum thickness of 3 mm, external diameter of approximately 190 mm and height of approximately 90 mm.

Water having an initial temperature of $10\text{ }^{\circ}\text{C} \pm 1\text{ }^{\circ}\text{C}$ and quantity of $1000\text{ g} \pm 5\text{ g}$ was used.

Before starting the measurement, measure the initial temperature of water.

And then the container was placed in the center of the oven. The oven was operated until attaining temperature of water as $20\text{ }^{\circ}\text{C} \pm 2\text{ }^{\circ}\text{C}$ and then measured the final water temperature.

A mercury thermometer was used to measure temperature rise. The RF output power was calculated as below formula.

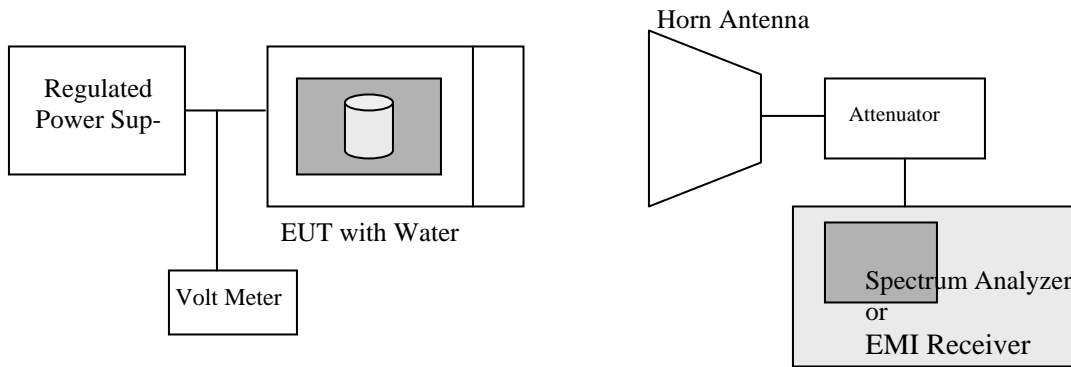
$$\text{Power [W]} = \frac{(4.187) * M_w * (T_2 - T_1) + 0.55 * M_c * (T_2 - T_0)}{t}$$

1) Magnetron type: 2M214 by LG

M_w : Mass of the water, in grams	1000
M_c : Mass of the container, in grams	500
T_2 : Final temperature of the water, in $^{\circ}\text{C}$	20.5
T_1 : Initial temperature of the water, in $^{\circ}\text{C}$	10.0
T_0 : Ambient temperature, in $^{\circ}\text{C}$	23.1
t : Heating time in seconds, excluding the magnetron filament heat-up time.	42

$$\text{Power [W]} = \frac{4.187 * 1,000 * 10.5 + 0.55 * 500 * (-2.6)}{42} = 1029.7 \text{ Watts}$$

7.4 Frequency measurements



1) Magnetron type: 2M214 by LG

(1) Frequency vs Line Voltage Variation Test

Variation of line voltage from 80 % (96 V) to 125 % (150 V)

Load: 1,000 ml

Fundamental Frequency: 2,450 MHz

Limit: $2.4 \text{ GHz} < f < 2.5 \text{ GHz}$

Maximum Frequency Observed: 2,450 MHz

Minimum Frequency Observed: 2,448 MHz

Result: Pass

(2) Frequency vs Load Variation Test

Frequency was measured at the rated input voltage (AC 120 V).

Initial Load: 1,000 ml

Final Load: 200 ml

Fundamental Frequency: 2,450 MHz

Limit: $2.4 \text{ GHz} < f < 2.5 \text{ GHz}$

Maximum Frequency Observed: 2,450 MHz

Minimum Frequency Observed: 2,448 MHz

Result: Pass

7.5 Power Density Safety Check

The power density was checked to ensure that the power is not greater than 1.0 mW/cm² at any location of the oven. The 1.0 mW/cm² is in accordance with CDRH and UL923 standard.

A microwave survey meter was placed on all sides, door and viewing, bottom, top and rear. The leakage microwave and did not exceed the specified limits.

1) Magnetron type: 2M214 by LG

Maximum Leakage Microwave Observed: 0.31 mW/cm²

Result: Pass

7.6 Conducted emissions (Section 18.307)

Conducted emission was measured at a frequency range 150 kHz to 30 MHz. The Power Line disturbance voltage was measured with the equipment under test (EUT) in a shielded room. The EUT was connected to a line impedance stabilization network (LISN) placed on the floor. The EUT was placed on a non-metallic table 0.4 m above the metallic, grounded floor. The distance to other metallic surfaces was at least 0.4 m.

The line conducted emission measurement procedure and test configuration is based on CISPR 11:2009 and Amendment 1:2010.

Amplitude measurements were performed with a quasi-peak detector and, if required, with an average detector.

Below data are the highest levels in Microwave mode.

An overview sweep performed with peak detector is included in the APPENDIX A (Test Plot).

1) Magnetron type: 2M214 by LG

Frequency [MHz]	Quasi-Peak			Average			Result
	Disturbance Level [dBuV]	Permitted Limit [dBuV]	Margin [dB]	Disturbance Level [dBuV]	Permitted Limit [dBuV]	Margin [dB]	
0.282	48.4	60.8	-12.4	23.2	50.8	-27.6	PASS
0.334	50.5	59.4	-8.9	21.8	49.4	-27.6	PASS
1.954	41.5	56.0	-14.5	14.2	46.0	-31.8	PASS
1.970	40.6	56.0	-15.4	12.3	46.0	-33.7	PASS
16.534	42.4	60.0	-17.6	18.8	50.0	-31.2	PASS
16.578	39.2	60.0	-20.8	18.1	50.0	-31.9	PASS

Remark: 1. "<<" means that disturbance level is lower than 20 dB below the limit.
 2. The measured disturbance level includes all related factor. (LISN Insertion loss and Cable loss).

7.7 Radiated emissions (Section 18.305)

Radiated emission was measured at a frequency range 30 MHz to 26 GHz. The EUT was supported by a 1 m high wood table, measurement above 1 GHz and below 1 GHz.

Radiated emission measurement in frequency range 1 GHz to 26 GHz was made inside an anechoic chamber at 3 m to determine to emission characteristics of EUT. The EUT is configured and operated in a manner, which produces the maximum emission in a typical configuration. Final measurements were made outdoor in control room at 3-meter test method.

1) Magnetron type: 2M214 by LG

Test distance: 3 m

Freq. [MHz]	Ant. Factor [dB]	Cable Loss [dB]	Load [ml]	Load Location	Meter Reading [dBuV]	Field Strength @ 3 m [dBuV/m]	Field Strength @ 3 [uV/m]	Field Strength @ 300 m [uV/m]	FCC Limit @ 300 m [uV/m]	Result
1.199	24.6	0.54	700	Center	2.5	27.7	24.3	0.2	28.9	PASS
2.216	27.0	0.60	700	Center	3.2	30.7	34.3	0.3	28.9	PASS
2.398	27.4	0.64	700	Center	6.1	34.1	50.7	0.5	28.9	PASS
2.567	27.8	0.67	700	Center	5.5	34.0	50.1	0.5	28.9	PASS
2.703	28.0	0.69	700	Center	4.6	33.3	46.2	0.5	28.9	PASS
4.891	31.5	0.69	700	Center	4.0	36.1	63.8	0.6	28.9	PASS
4.891	31.5	0.69	700	Rt. Front	6.2	38.3	82.2	0.8	28.9	PASS
4.901	31.5	0.69	300	Center	5.7	37.8	77.6	0.8	28.9	PASS
4.889	31.5	0.69	300	Rt. Front	4.6	36.7	68.4	0.7	28.9	PASS
7.337	36.1	1.23	700	Center	3.0	40.3	103.5	1.0	28.9	PASS
7.329	36.1	1.23	700	Rt. Front	7.7	45.0	177.8	1.8	28.9	PASS
7.350	36.1	1.23	300	Center	9.9	47.2	229.1	2.3	28.9	PASS
7.390	36.1	1.23	300	Rt. Front	9.0	46.3	206.5	2.1	28.9	PASS
8.838	37.2	1.28	700	Center	-1.4	37.1	71.6	0.7	28.9	PASS
9.840	37.8	1.24	700	Center	-0.6	38.4	83.2	0.8	28.9	PASS
14.772	41.5	1.35	700	Center	-2.0	40.8	109.6	1.1	28.9	PASS

Other frequencies: No detected.

For measurement of 30 MHz – 1,000 MHz, refer to APPENDIX A (Test Plot).

Result: Pass

* Limit (at 300 m) = 25 * (RF Power/500)^{1/2} [μV/m]

* Field Strength below 1,000 MHz (at 300 m) [μV/m] = 10^[(Field strength at 10m(dBuV/m)-29.5)/20]

* Field Strength above 1,000 MHz (at 300 m) [μV/m] = K * 10^[(Field strength at 3m(dBuV/m)/20]

NOTES:

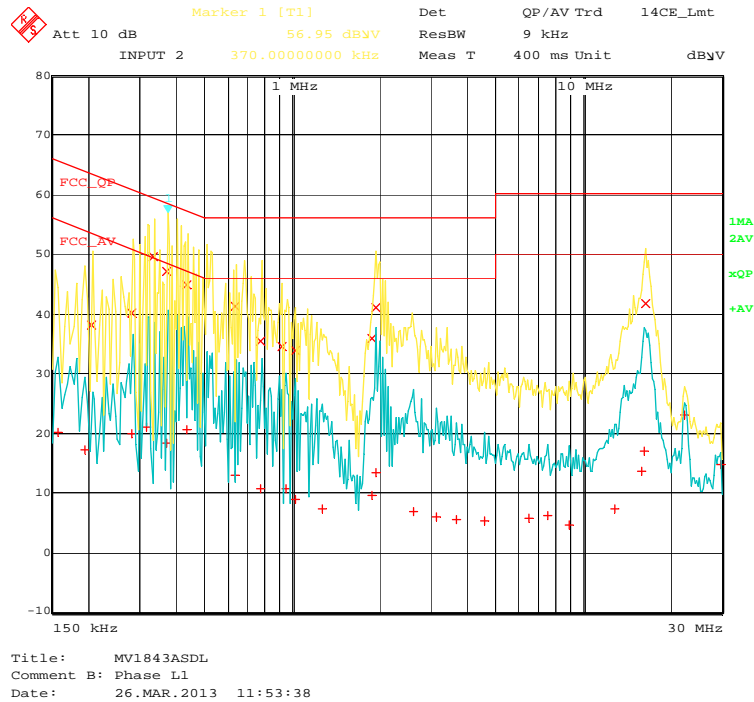
- Two representative modes (full power and defrost) of operation were investigated.
- A glass beaker was used as the container and the test was made with a shelf in its initial normal position.
- Load for measurement of radiation on second and third harmonic: Two loads, one of 700 and the other of 300 ml, of water were used. Each load was tested both with the beaker located in the center of the oven and with it in the corner.
- Load for all other measurements: 700 ml of water, with the beaker located in the center of the oven
- All other emissions are non-significant.
- The tests were made with average detector for frequency range of 30 MHz to 26 GHz.

APPENDIX A. Test Plot

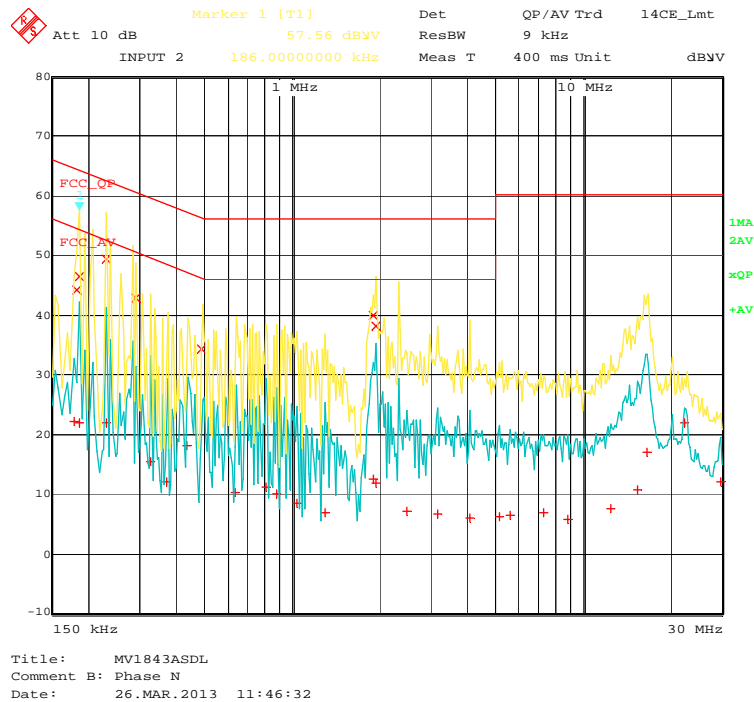
◆ 150 kHz ~ 30 MHz (Magnetron type: 2M214 by LG)

- Operating Mode: Maximum RF Power Output
- Detect Mode: Quasi-Peak(x)/Average(+), Scan Mode: Peak

<Phase: L1>



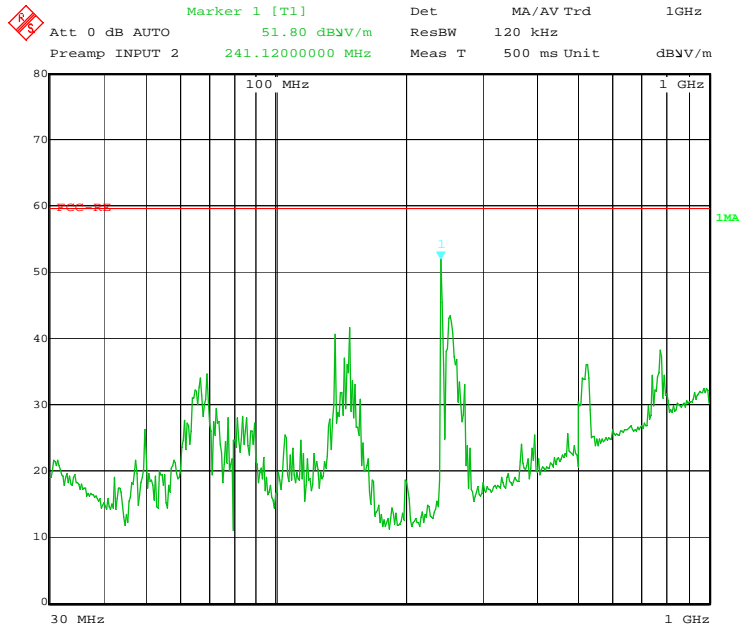
<Phase: N>



◆ 30 MHz ~ 1000 MHz (Magnetron type: 2M214 by LG)

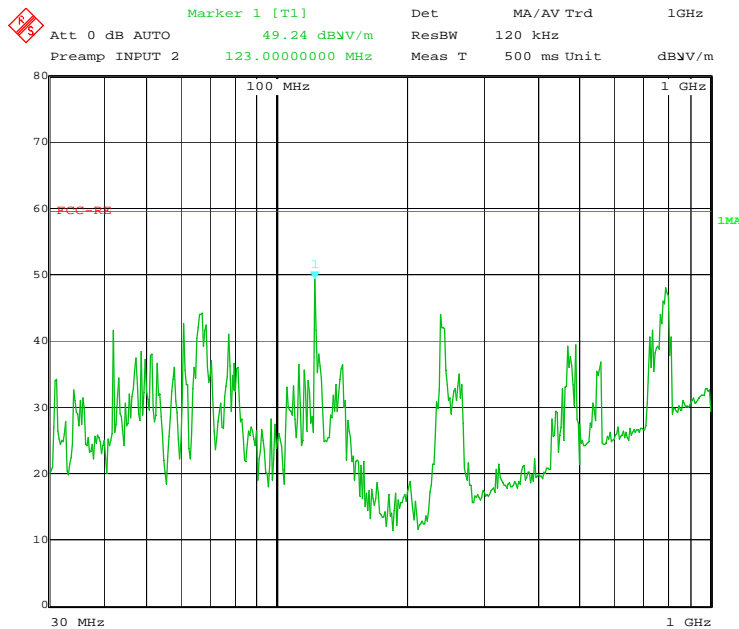
- Operating Mode: Maximum RF Power Output
- Detect Mode: Average, Scan Mode: Peak
- Measurement Distance: 10 meters

<Antenna Polarization: Horizontal>



Title: MV1843ASDL #1
Comment B: ANT. HOR.
Date: 25.MAR.2013 20:55:59

<Antenna Polarization: Vertical>

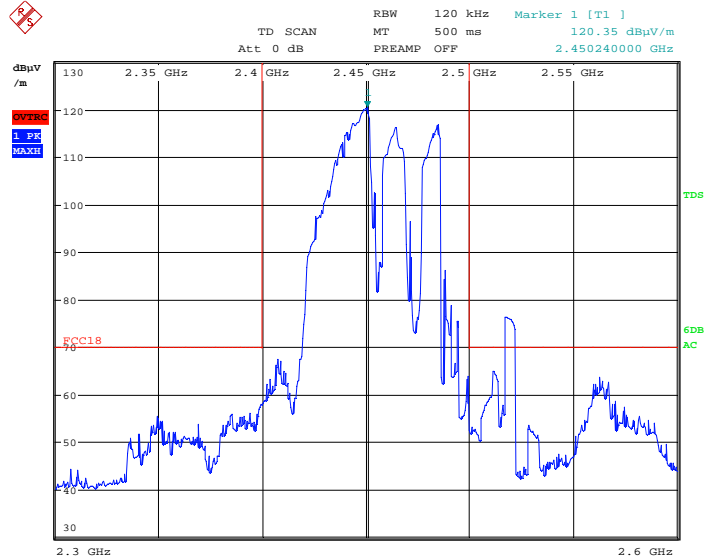


Title: MV1843ASDL #1
Comment B: ANT. VER.
Date: 25.MAR.2013 20:35:23

◆ Voltage Variation (Magnetron type: 2M214 by LG)

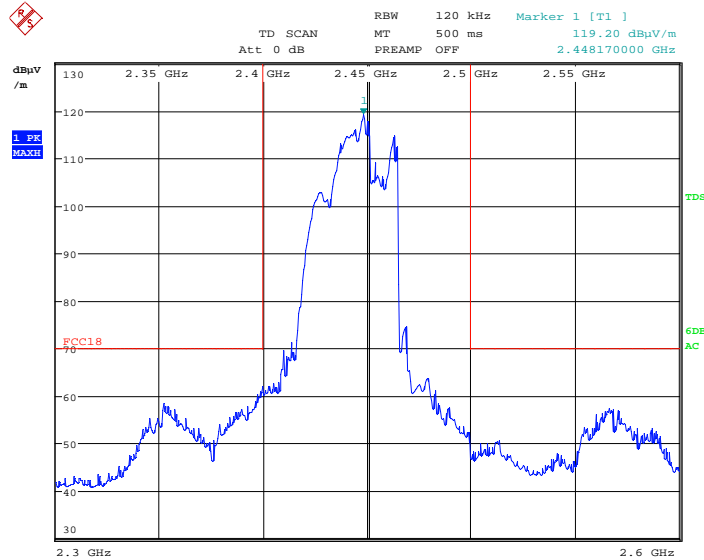
- Detect Mode: Average, Scan Mode: Peak

<Maximum Frequency Observed: 2,450 MHz>



MV1843ASDL Fundamental 150V
Date: 25.MAR.2013 16:16:38

<Minimum Frequency Observed: 2,448 MHz>



MV1843ASDL Fundamental 96V
Date: 25.MAR.2013 15:54:16

◆ Load Variation (Magnetron type: 2M214 by LG)

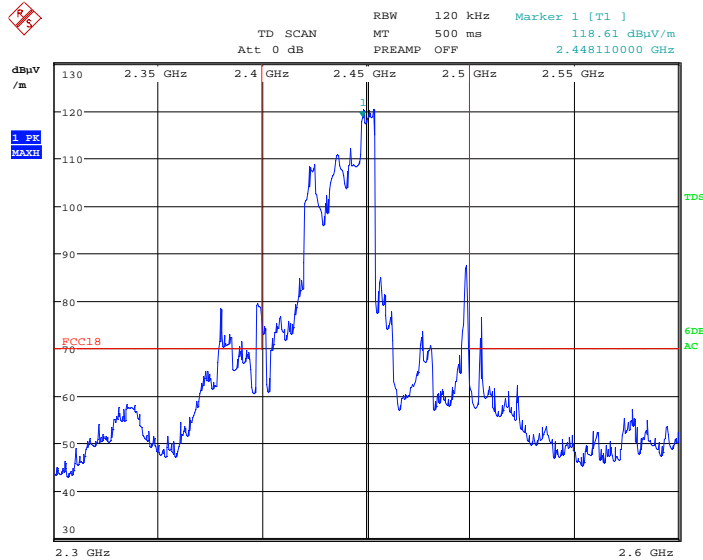
- Detect Mode: Average, Scan Mode: Peak

<Maximum Frequency Observed: 2,450MHz >



MV1843ASDL Fundamental 400ml
Date: 25.MAR.2013 15:33:09

< Minimum Frequency Observed: 2,448 MHz >



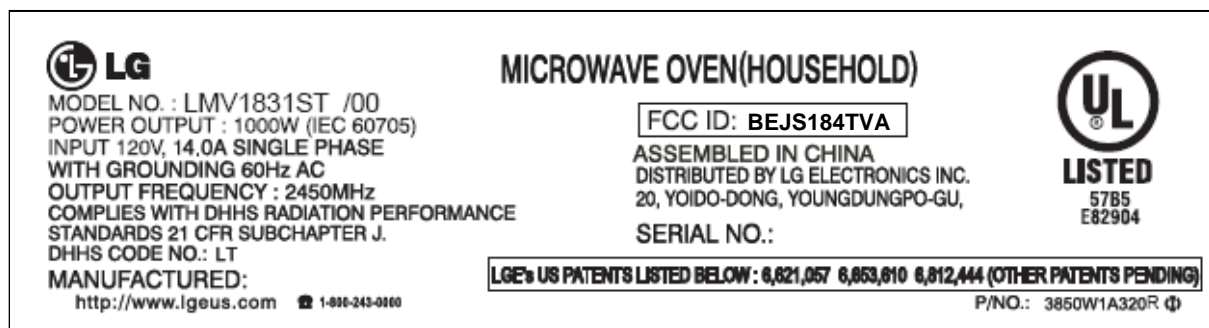
MV1843ASDL Fundamental 200ml
Date: 25.MAR.2013 15:41:12

APPENDIX B. Labeling Requirements

Labeling requirements per Section 2.925 and 15.19.

The label shown shall be permanently affixed at a conspicuous location on the device and be readily visible to the user at the time purchase.

The label is permanently affixed to the front cavity of the equipment with a permanent adhesive as below.



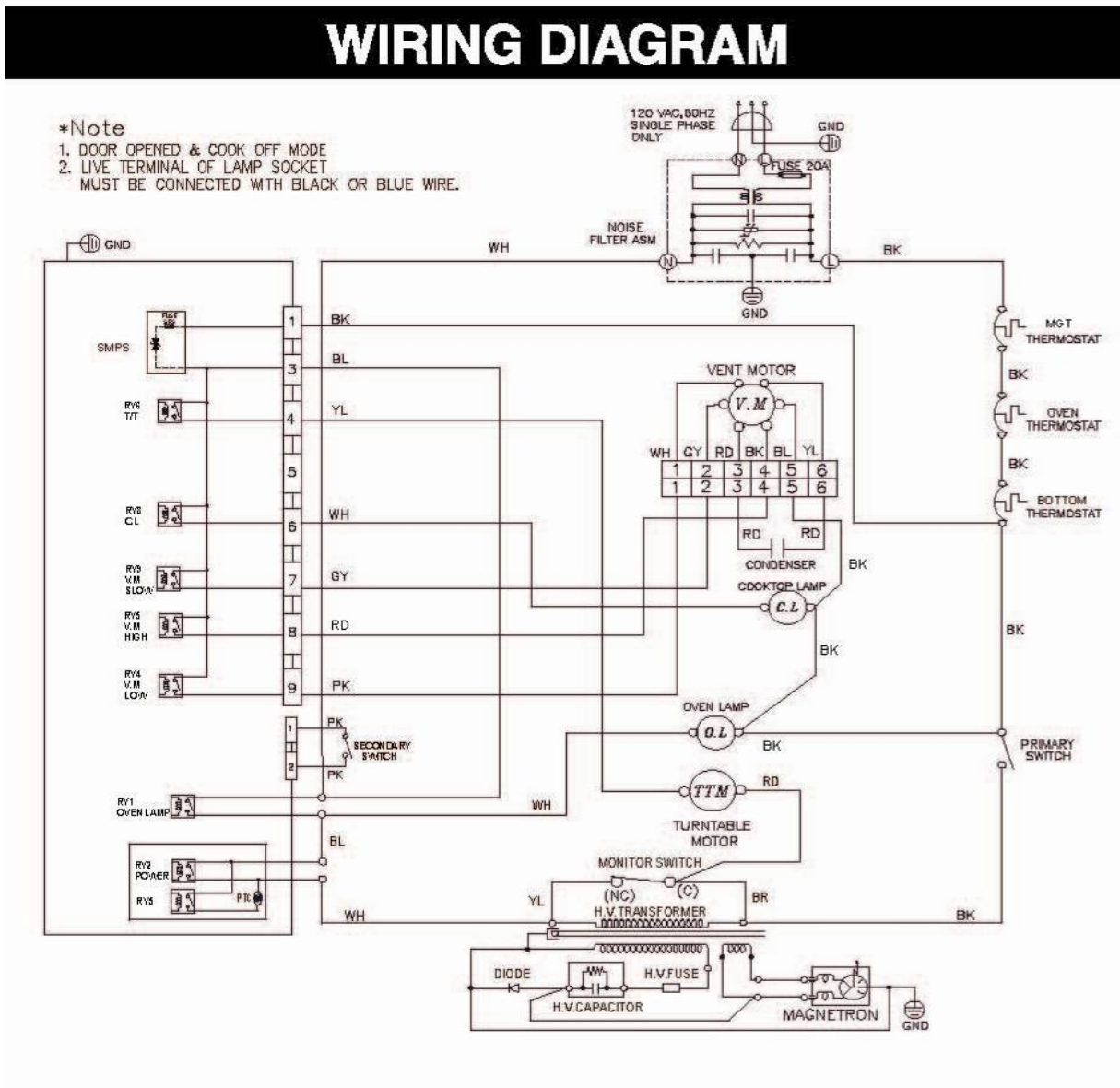
<Fig. 1. Sample Label of Nameplate>

* Alternate location:
The nameplate may be alternatively affixed on the left side of control panel or internal surface of oven cavity or rear surface of oven.

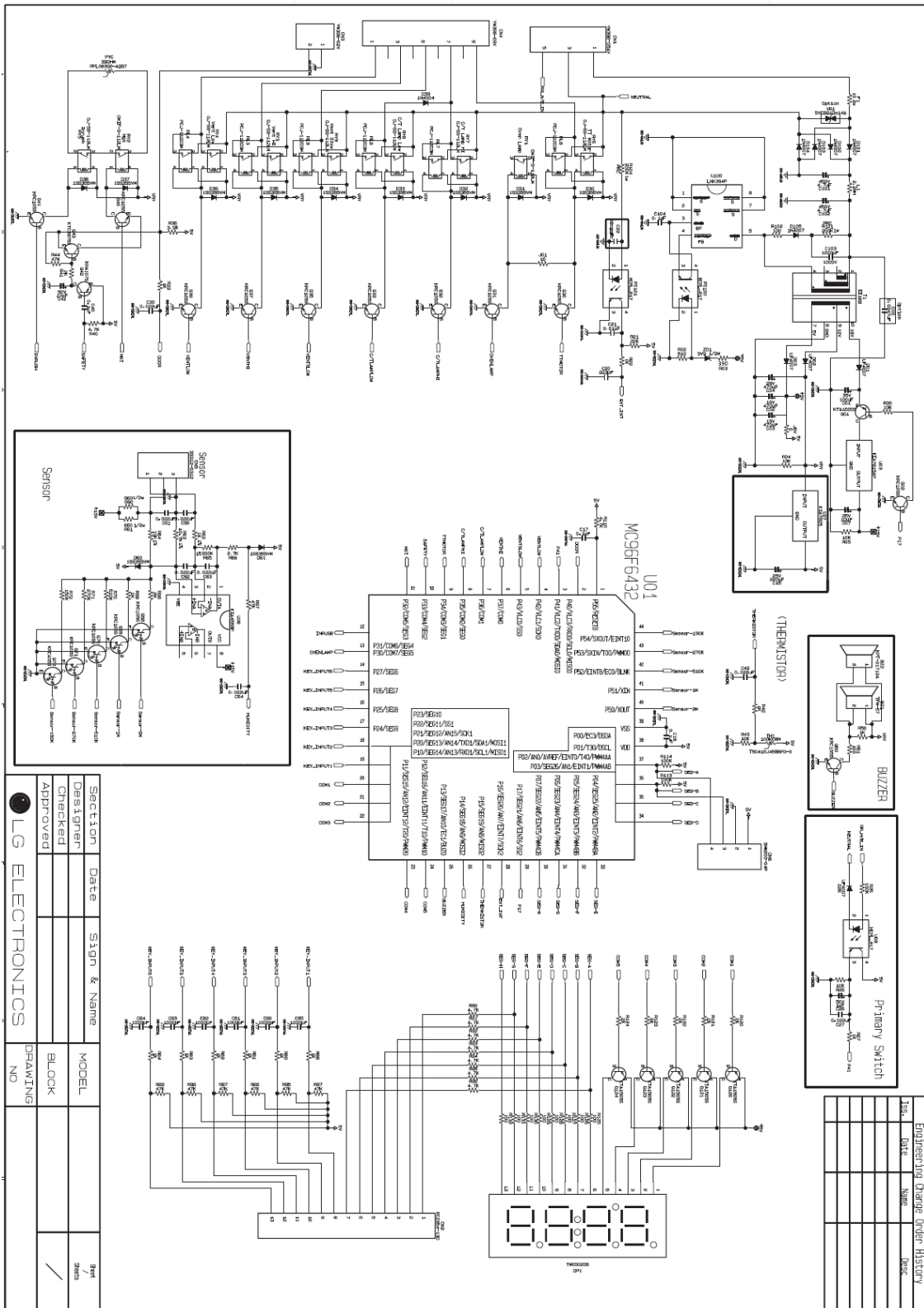


< Fig. 2. Photo of the physical location of the label>

APPENDIX C. Block Diagram / Schematics



<Fig. 3-1. Block Diagram>

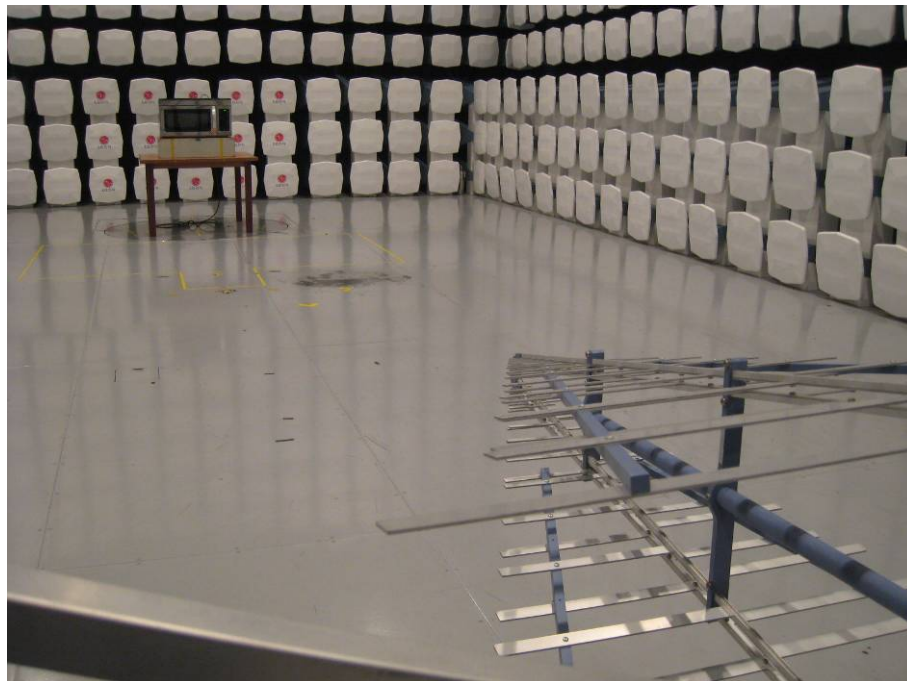
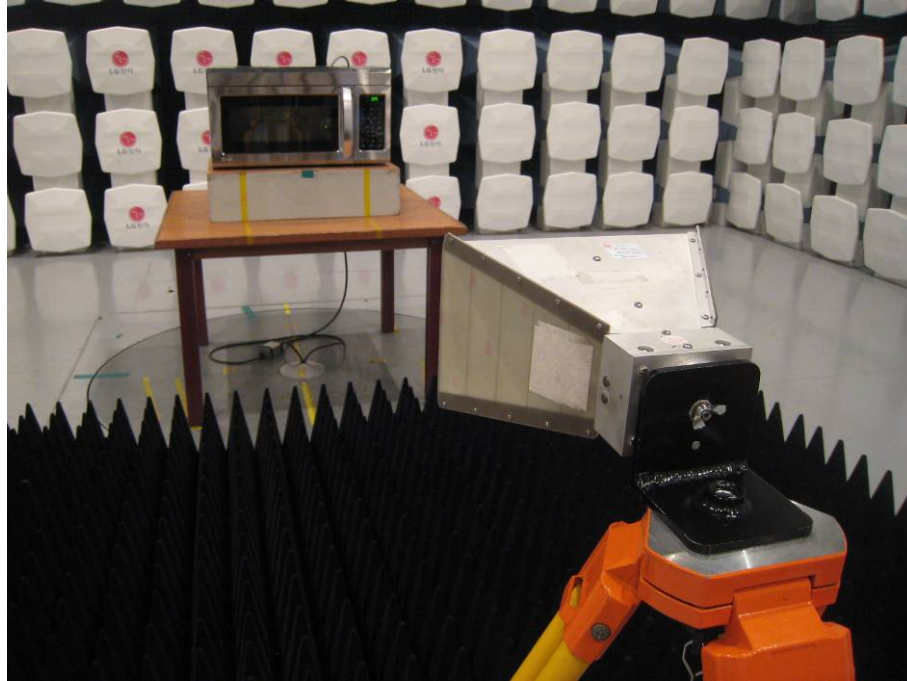


LG ELECTRONICS	SECTION	DATE	SIGN & NAME	MODEL	SHEET
	DESIGNER			BLOCK	1 / 1
	CHECKED			DRAWING NO.	

<Fig. 3-2. Schematic Diagram>

APPENDIX D. Test Photos

Test photos show the worst case configuration and cable placement with a minimum margin to the specifications.



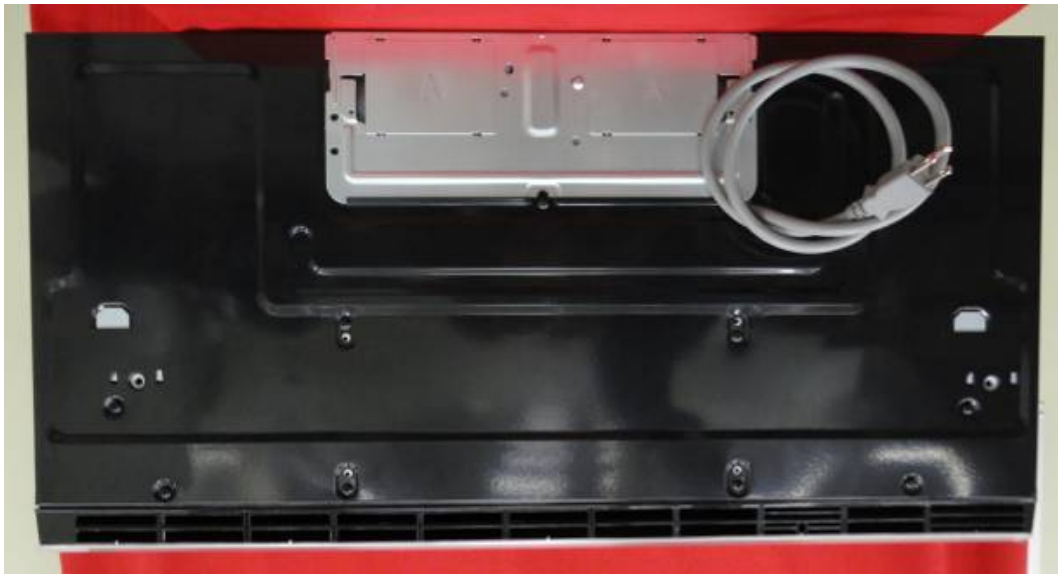
APPENDIX E. EUT Photos



<Front View>



<Rear View>



<Top View>



<Bottom View>



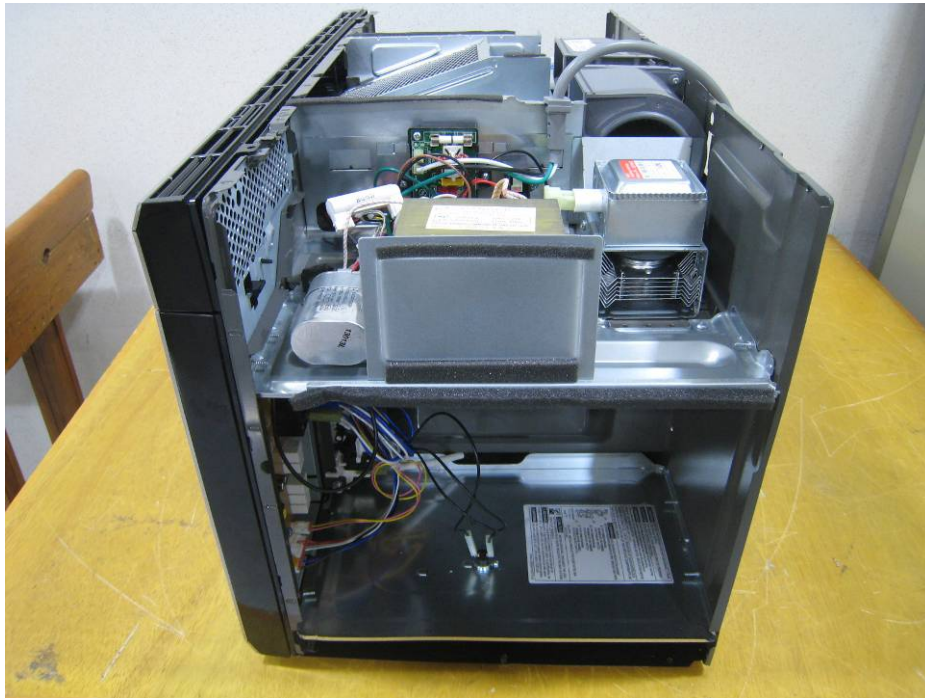
<Left Side View>



<Right Side View>



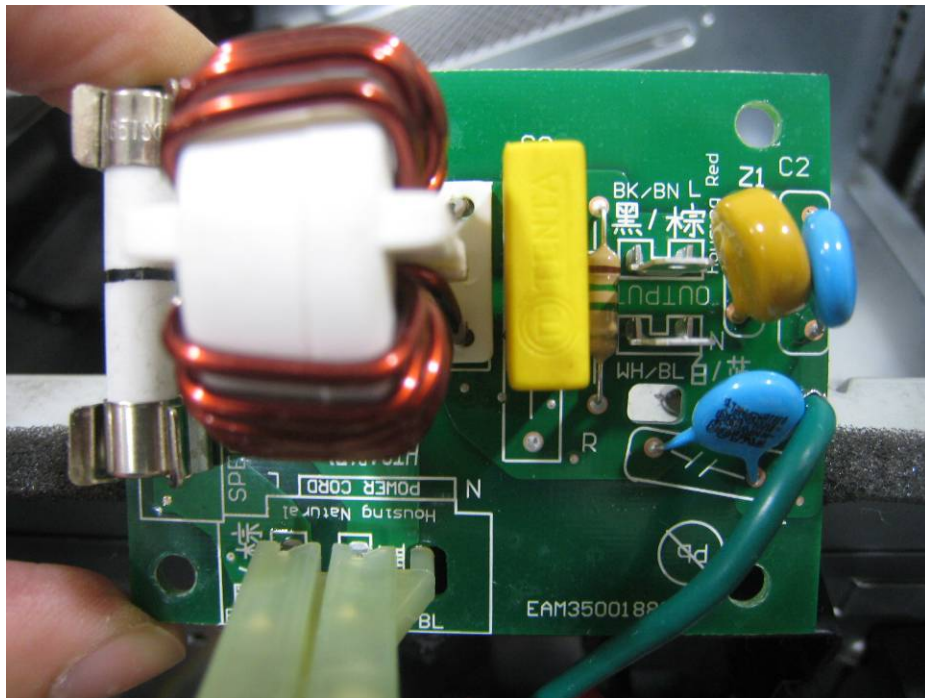
<Inside of Cavity>



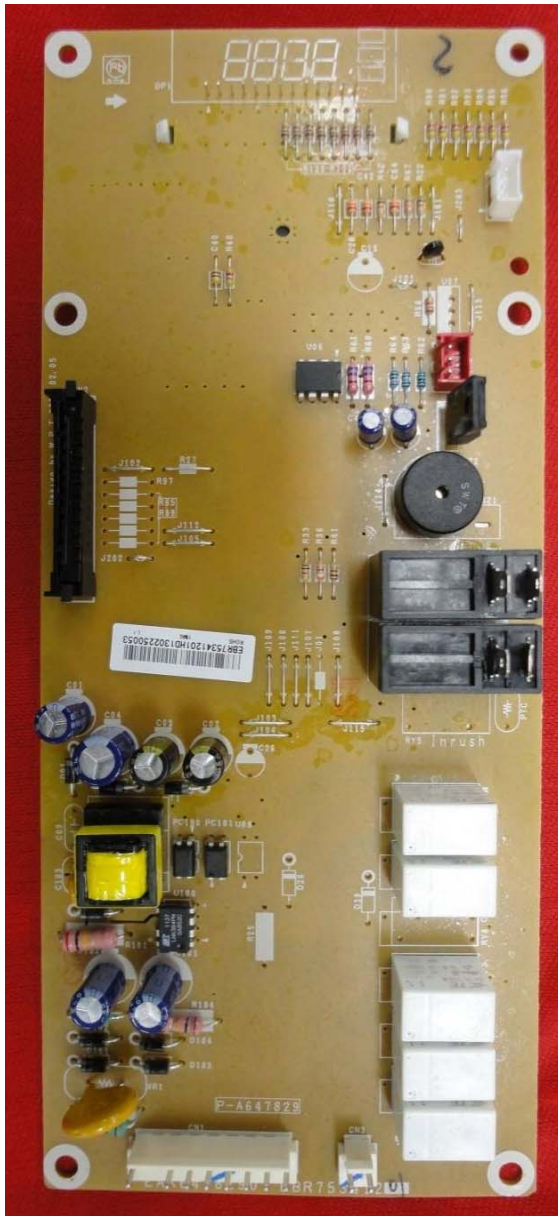
<Inside of MWO>



<Magnetron>



<Noise filter>



<PCB>

APPENDIX F. Owner's Manual with regard to FCC Instruction

FEDERAL COMMUNICATIONS COMMISSION RADIO FREQUENCY INTERFERENCE STATEMENT (U.S.A. ONLY)

⚠ WARNING:

This equipment generates and uses ISM frequency energy and if not installed and used properly, that is in strict accordance with the manufacturer's instructions, may cause interference to radio and television reception. It has been type tested and found to comply with limits for ISM Equipment pursuant to part 18 of FCC Rules, which are designed to provide reasonable protection against such interference in a residential installation.

However, there is no guarantee that interference will not occur in a particular installation. If this equipment does cause interference to radio or television reception, which can be determined by turning the equipment off and on, the user is encouraged to try to correct the interference by one or more of the following:

- Reorient the receiving antenna of the radio or television.
- Relocate the Microwave Oven with respect to the receiver.
- Move the microwave oven away from the receiver.
- Plug the microwave oven into a different outlet so that the microwave oven and the receiver are on different branch circuits.

The manufacturer is not responsible for any radio or TV interference caused by **unauthorized modification** to this microwave oven. It is the responsibility of the user to correct such interference.