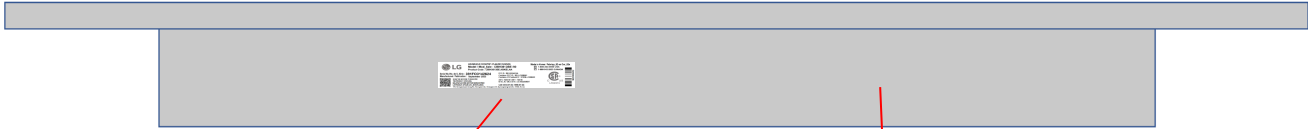


APPENDIX G
: LABEL INFORMATION



< Front side >



HOUSEHOLD COOKTOP / PLAN DE CUISSON
Model / Mod_8ale : **CBIH3613BE /00**
Product Code : CBIH3613BE.ABKELNA

Made in Korea / Fabriqué en Cor_82e

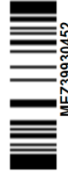
☎ 1-800-243-0000 USA
☎ 1-888-542-2623 CANADA



Serial No./No. de S_82rie : **391FO3142624**
Manufactured / Fabrication : **September 2023**



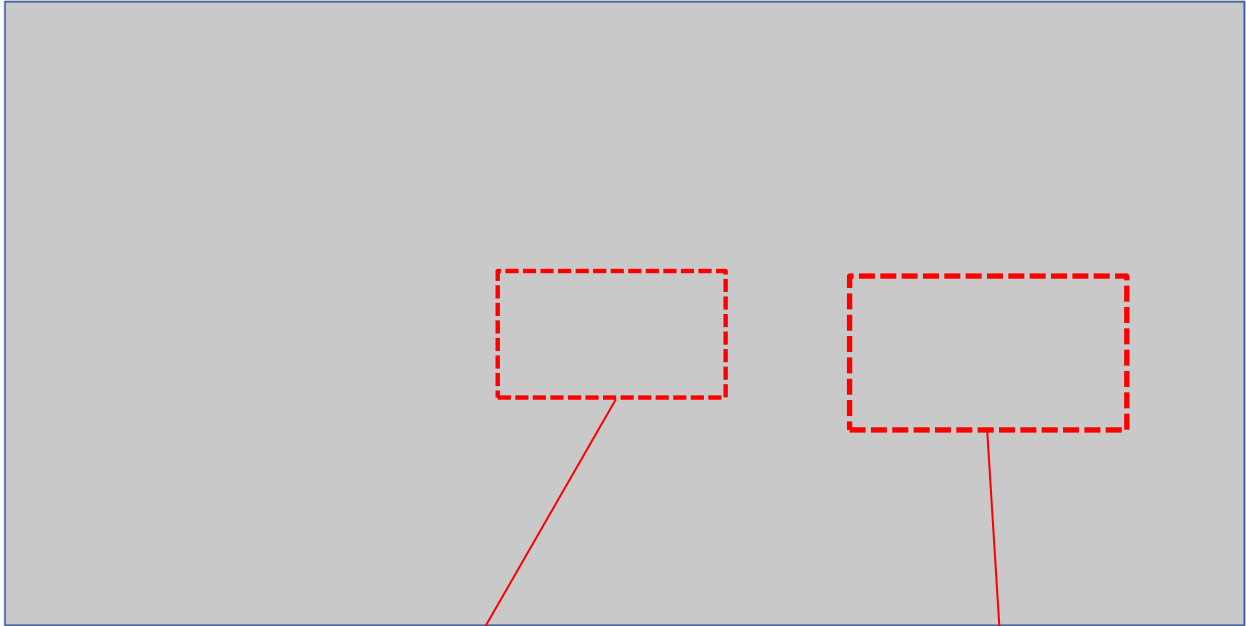
SCAN THE QR CODE TO REGISTER
THE PRODUCT. (FOR USA)
BALAYEZ LE CODE QR POUR ENREGISTRER
LE PRODUIT. (POUR LES_80TATS-UNIS)

FCC ID : BEJQ50441HA
Contains FCC ID : BEJ-LCWB001
Contains IC/Contient IC : 2703N-LCWB001
240 V : 9200 W / 208 V : 7524 W
60 Hz , AC ONLY, 60 Hz ; CA UNIQUEMENT
CAN ICES-001 (B) / NMB-001 (B)
170, Seongsanpaechong-Ro, Seongsan-Gu, Changwon-Si, Gyeongsangnam-Do, 51533, Korea

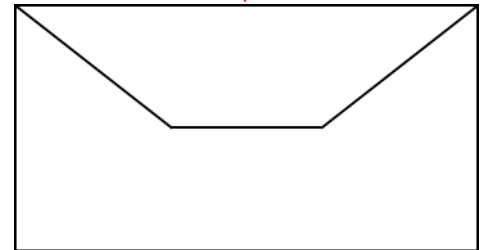


 CAUTION	 PRECAUCIÓN
<p>Service personnel: When disassembling upper parts of cooktop from base for service, tilt upper parts up slightly and disconnect wire harnesses before continuing disassembly. ※ To be disassembled by authorized service personnel only.</p>	<p>Personal de servicio: Al desmontar de la base las partes superiores de la placa de cocción para su reparación, incline las partes superiores hacia arriba levemente y desconecte los arneses de cables antes de continuar con el desmontaje. ※ El desmontaje solo deberá ser realizado por personal de servicio autorizado.</p>






< Bottom side >



(Technical card)

	<p>⚠ WARNING</p> <ul style="list-style-type: none"> • Electrical Shock Hazard. Can result in serious injury or death. Disconnect appliance from electrical power before servicing.
	<p>⚠ ADVERTENCIA</p> <ul style="list-style-type: none"> • Peligro de choque eléctrico. Puede ocasionar heridas graves o la muerte. Desconecte el electrodoméstico del suministro eléctrico antes de realizar el mantenimiento.
	<p>⚠ AVERTISSEMENT</p> <ul style="list-style-type: none"> • Danger d'électrocution. Peut causer des blessures graves ou la mort. Débrancher l'appareil de la prise de courant avant d'en faire l'entretien.

<p>"Connect only to a 3-wire, 120/240 volt power supply; the neutral conductor is not required for the operation of the appliance. The potential at the power supply electrical connections shall be 150 volts to ground or less."</p> <p>"Conecte solamente a una fuente 3-Hilos, 2-Fases con suministro de energía de 120/240 voltios. El conductor neutro no es requerido para la operación de este aparato. El potencial de las conexiones en la fuente de alimentación deberá ser 150 voltios a tierra o menor"</p> <p>"Raccordez l'appareil uniquement à une source d'alimentation 120/240 volts à trois fils ;le conducteur neutre n'est pas requis pour le fonctionnement de l'appareil. Le potentiel aux connexions électriques de l'alimentation doit être de 150 volts à la terre ou moins."</p>	 <p style="font-size: 8px;">Photo: MEX20107110</p>
---	---



CBIH3613BE

BBKELNA

CBIH3613BE

LG Electronics Inc. <http://www.lg.com>

☎ 1-800-243-0000 (USA)

1-888-542-2623 (CANADA)

(USA Only / Seulement pour USA)

This device complies with part 15 of the FCC Rules.

Operation is subject to the following two conditions:

- (1) This device may not cause harmful interference, and
- (2) this device must accept any interference received, including interference that may cause undesired operation



S/N : 405KMMM00001

Imp. by/por 111 Sylvan Ave. Englewood Cliffs, NJ 07632 (USA)

Imp. by/par LG Electronics Canada Inc. North York, ON M9L 2X6 (Canada)

Made in Korea
Fabriqu_82 en Cor_82
Hecho en Corea



< Box label >