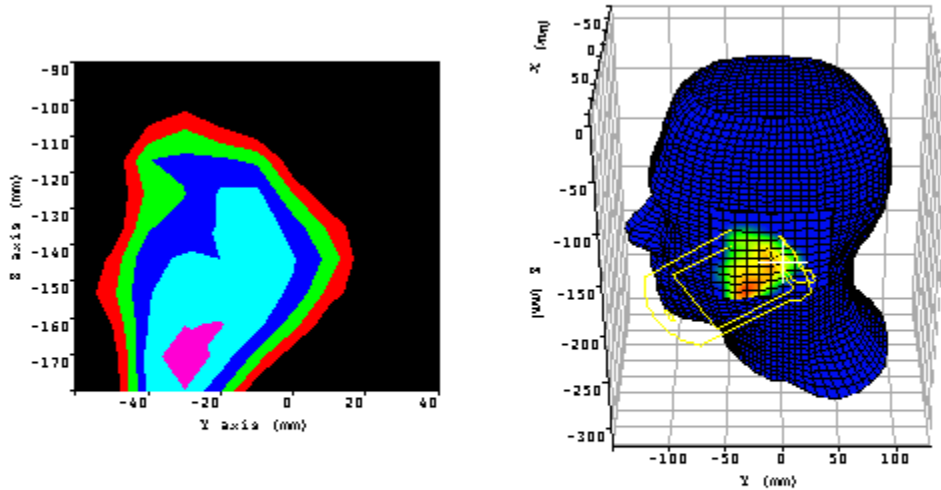
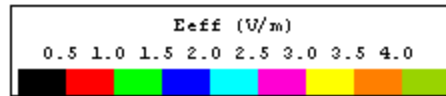
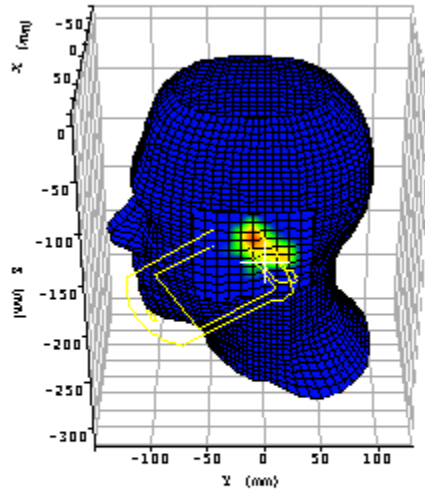
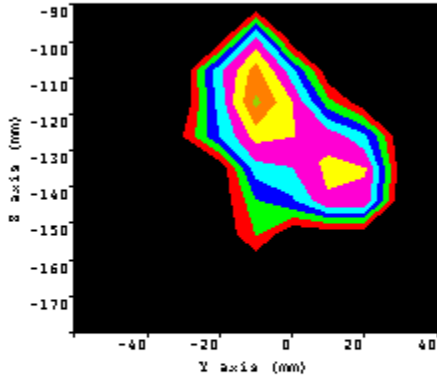


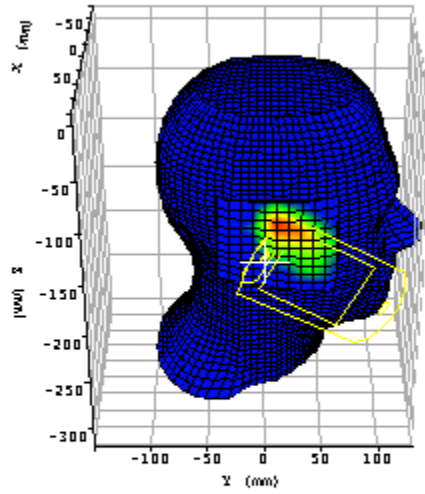
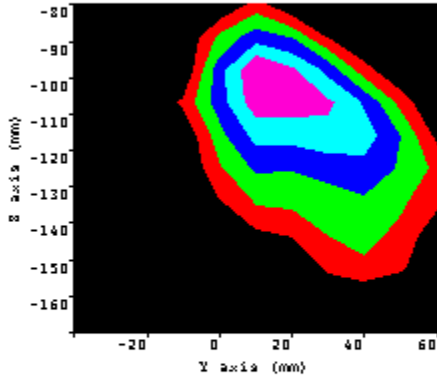
Appendix A: Measurement Plots



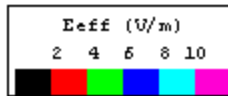
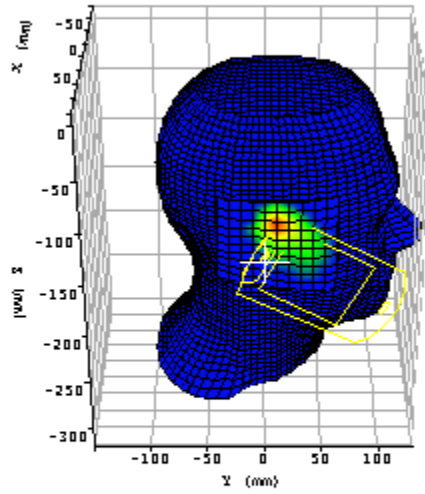
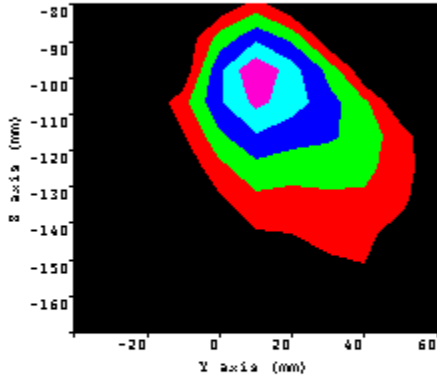
Plot 1.	
Date:	7/24/02
Temperature Air / Liquid:	21.8°C / 22.0°C
Liquid mass density (ρ):	1
Crest factor:	N/A
Probe factors (ConvF):	X=0.466, Y=0.686, Z=0.421
Position:	Left touch
Channel:	Mid
Maximum spot SAR	0.10W/kg
Maximum 1 gram SAR:	0.059W/kg
Maximum 10 gram SAR:	0.025W/kg
Power reference start:	0.011W/kg
Power reference end	0.011W/kg
Power reference change	0.0%



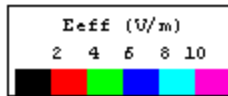
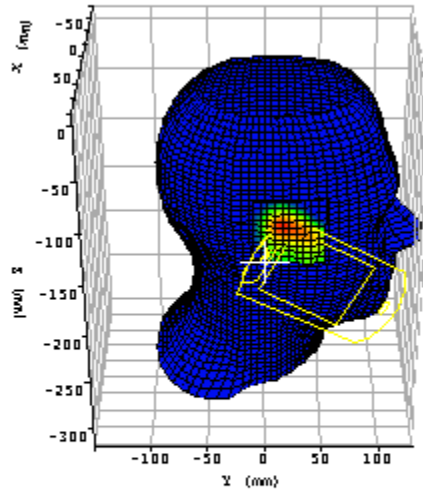
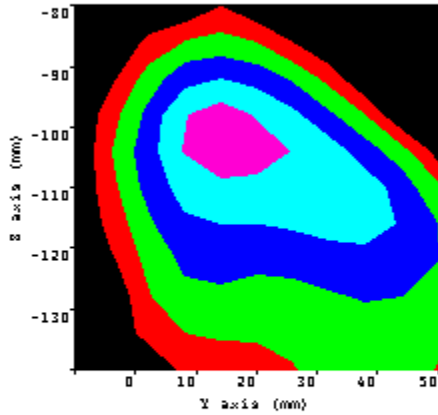
Plot 2.	
Date:	7/24/02
Temperature Air / Liquid:	21.8°C / 22.0°C
Liquid mass density (ρ):	1
Crest factor:	N/A
Probe factors (ConvF):	X=0.466, Y=0.686, Z=0.421
Position:	Left tilt
Channel:	Mid
Maximum spot SAR	0.070W/kg
Maximum 1 gram SAR:	0.042W/kg
Maximum 10 gram SAR:	0.017W/kg
Power reference start:	0.010W/kg
Power reference end	0.010W/kg
Power reference change	0.0%



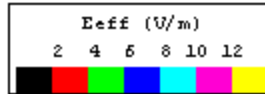
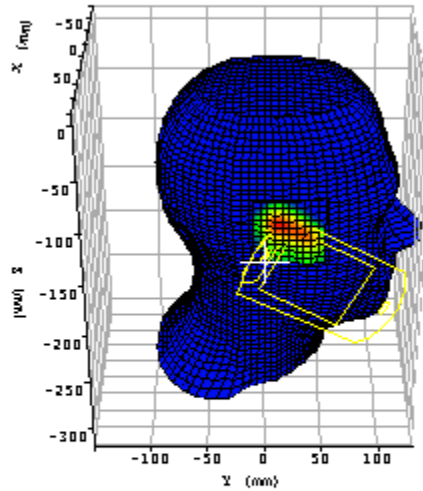
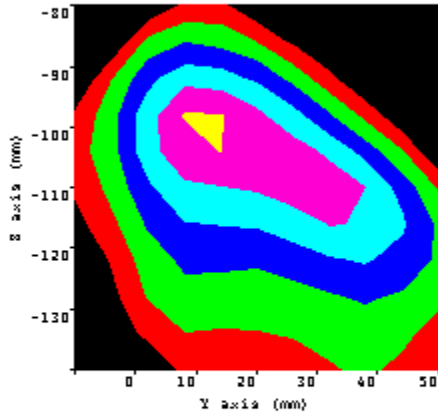
Plot 3.	
Date:	7/24/02
Temperature Air / Liquid:	21.8°C / 22.0°C
Liquid mass density (ρ):	1
Crest factor:	N/A
Probe factors (ConvF):	X=0.466, Y=0.686, Z=0.421
Position:	Right touch
Channel:	Mid
Maximum spot SAR	0.51W/kg
Maximum 1 gram SAR:	0.250W/kg
Maximum 10 gram SAR:	0.110W/kg
Power reference start:	0.028W/kg
Power reference end	0.028W/kg
Power reference change	0.0%



Plot 4.	
Date:	7/24/02
Temperature Air / Liquid:	21.8°C / 22.0°C
Liquid mass density (ρ):	1
Crest factor:	N/A
Probe factors (ConvF):	X=0.466, Y=0.686, Z=0.421
Position:	Right tilt
Channel:	Mid
Maximum spot SAR	0.51W/kg
Maximum 1 gram SAR:	0.233W/kg
Maximum 10 gram SAR:	0.095W/kg
Power reference start:	0.022W/kg
Power reference end	0.023W/kg
Power reference change	4.51%



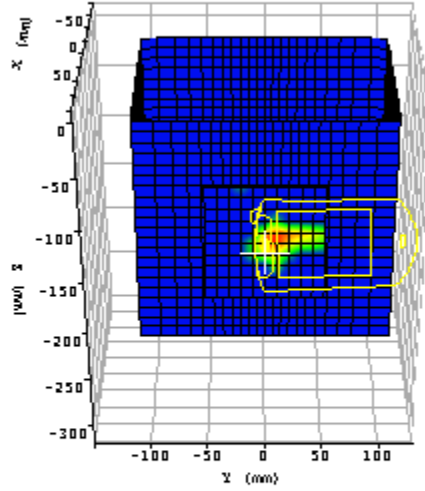
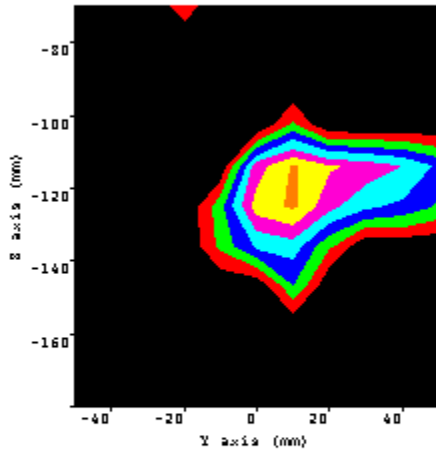
Plot 5.	
Date:	7/24/02
Temperature Air / Liquid:	21.8°C / 22.0°C
Liquid mass density (ρ):	1
Crest factor:	N/A
Probe factors (ConvF):	X=0.466, Y=0.686, Z=0.421
Position:	Right touch
Channel:	Low
Maximum spot SAR	0.42W/kg
Maximum 1 gram SAR:	0.208W/kg
Maximum 10 gram SAR:	0.093W/kg
Power reference start:	0.020W/kg
Power reference end	0.019W/kg
Power reference change	-3.44%



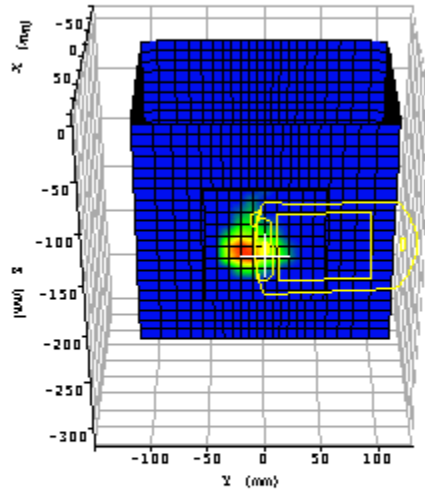
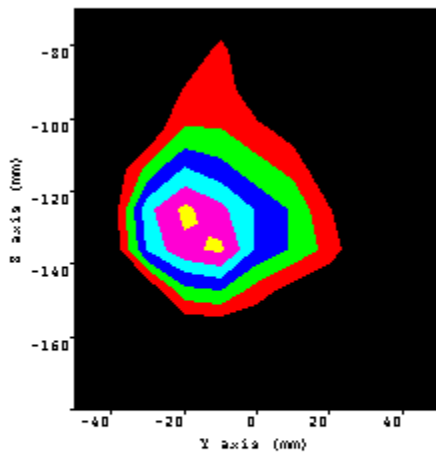
Plot 6.	
Date:	7/24/02
Temperature Air / Liquid:	21.8°C / 22.0°C
Liquid mass density (ρ):	1
Crest factor:	N/A
Probe factors (ConvF):	X=0.466, Y=0.686, Z=0.421
Position:	Right touch
Channel:	High
Maximum spot SAR	0.56W/kg
Maximum 1 gram SAR:	0.274W/kg
Maximum 10 gram SAR:	0.120W/kg
Power reference start:	0.027W/kg
Power reference end	0.028W/kg
Power reference change	3.70%

Body:

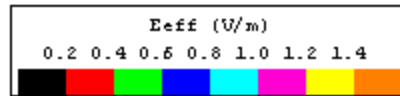
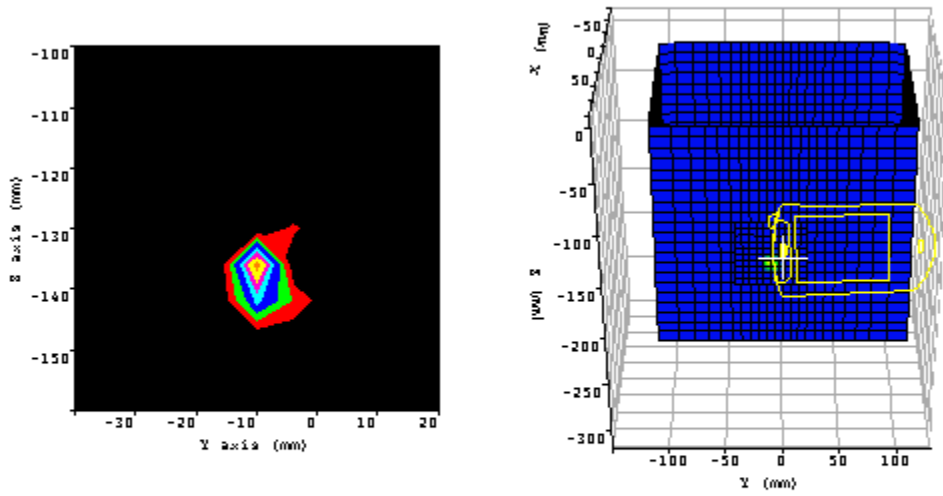
During all body SAR tests the EUT was touching the phantom.



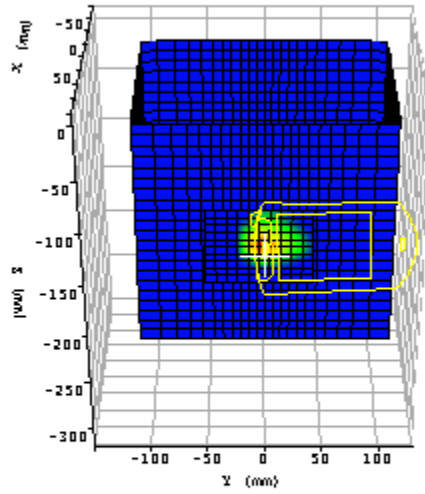
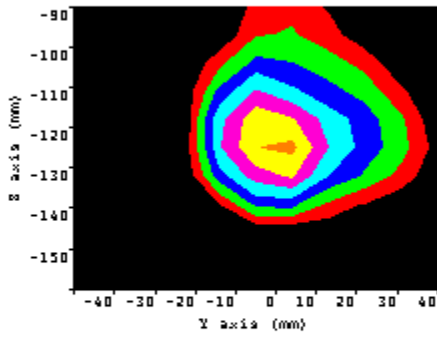
Plot 7.	
Date:	7/24/02
Temperature Air / Liquid:	21.8°C / 22.0°C
Liquid mass density (ρ):	1
Crest factor:	N/A
Probe factors (ConvF):	X=0.597, Y=0.879, Z=0.539
Position:	Screen to phantom
Channel:	Mid
Maximum spot SAR	0.199W/kg
Maximum 1 gram SAR:	0.142W/kg
Maximum 10 gram SAR:	0.057W/kg
Power reference start:	0.001W/kg
Power reference end	0.001W/kg
Power reference change	0.0%



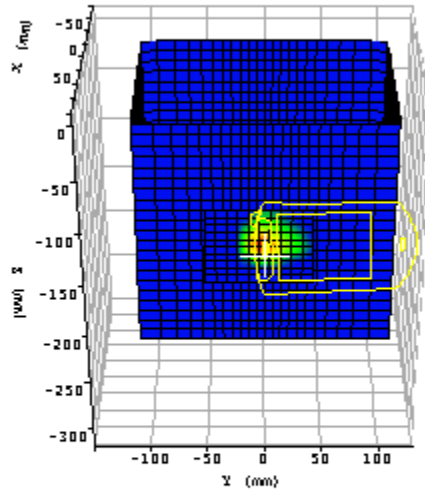
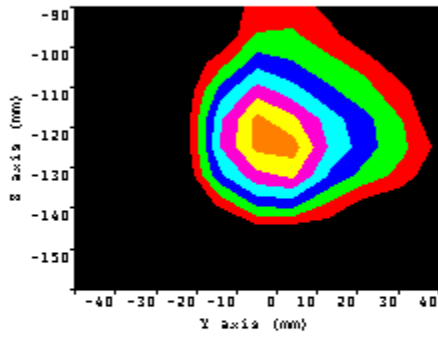
Plot 8.	
Date:	7/24/02
Temperature Air / Liquid:	21.8°C / 22.0°C
Liquid mass density (ρ):	1
Crest factor:	N/A
Probe factors (ConvF):	X=0.597, Y=0.879, Z=0.539
Position:	Screen away from phantom
Channel:	Mid
Maximum spot SAR	0.592W/kg
Maximum 1 gram SAR:	0.418W/kg
Maximum 10 gram SAR:	0.167W/kg
Power reference start:	0.0260W/kg
Power reference end	0.0258W/kg
Power reference change	-0.76%



Plot 9.	
Date:	7/24/02
Temperature Air / Liquid:	21.8°C / 22.0°C
Liquid mass density (ρ):	1
Crest factor:	N/A
Probe factors (ConvF):	X=0.597, Y=0.879, Z=0.539
Position:	Screen away from phantom with jacket
Channel:	Mid
Maximum spot SAR	0.027W/kg
Maximum 1 gram SAR:	0.017W/kg
Maximum 10 gram SAR:	0.005W/kg
Power reference start:	0.000W/kg
Power reference end	0.000W/kg
Power reference change	0.0%



Plot 10.	
Date:	7/24/02
Temperature Air / Liquid:	21.8°C / 22.0°C
Liquid mass density (ρ):	1
Crest factor:	N/A
Probe factors (ConvF):	X=0.597, Y=0.879, Z=0.539
Position:	Screen away from phantom
Channel:	Low
Maximum spot SAR	0.726W/kg
Maximum 1 gram SAR:	0.484W/kg
Maximum 10 gram SAR:	0.184W/kg
Power reference start:	0.032W/kg
Power reference end	0.033W/kg
Power reference change	0.184%



Plot 11.	
Date:	7/24/02
Temperature Air / Liquid:	21.8°C / 22.0°C
Liquid mass density (ρ):	1
Crest factor:	N/A
Probe factors (ConvF):	X=0.597, Y=0.879, Z=0.539
Position:	Screen away from phantom
Channel:	High
Maximum spot SAR	0.866W/kg
Maximum 1 gram SAR:	0.561W/Kg
Maximum 10 gram SAR:	0.209W/Kg
Power reference start:	0.032W/Kg
Power reference end	0.033W/Kg
Power reference change	3.03%