



User's Guide

hp iPAQ Pocket PC h5100 and h5500
series

Document Part Number: 304926-001

May 2003

Note: Model shown in illustrations is
iPAQ Pocket PC h5500 Series

© 2003 Hewlett-Packard Development Company, L.P.

HP, Hewlett Packard, and the Hewlett-Packard logo are trademarks of Hewlett-Packard Company in the U.S. and other countries.

iPAQ is a trademark of Hewlett-Packard Development Company, L.P. in the U.S. and other countries.

Microsoft, Windows, the Windows logo, Outlook, and ActiveSync are trademarks of Microsoft Corporation in the U.S. and other countries.

hp iPAQ Pocket PC is Powered by Microsoft® Windows®.



SD Logo is a trademark of Secure Digital in the U.S. and other countries.

XScale is a registered trademark of Intel Corporation in the U.S. and other countries.

All other product names mentioned herein may be trademarks of their respective companies.

Hewlett-Packard Company shall not be liable for technical or editorial errors or omissions contained herein or for incidental or consequential damages in connection with the furnishing, performance, or use of this material. The information in this document is provided “as is” without warranty of any kind, including, but not limited to, the implied warranties of merchantability and fitness for a particular purpose, and is subject to change without notice. The warranties for HP products are set forth in the express limited warranty statements accompanying such products. Nothing herein should be construed as constituting an additional warranty.

This document contains proprietary information that is protected by copyright. No part of this document may be photocopied, reproduced, or translated to another language without the prior written consent of Hewlett-Packard Company.



WARNING: Text set off in this manner indicates that failure to follow directions could result in bodily harm or loss of life.



CAUTION: Text set off in this manner indicates that failure to follow directions could result in damage to equipment or loss of information.

User's Guide
hp iPAQ Pocket PC h5100 and h5500 series
First Edition (May 2003)

Document Part Number: 304926-001

Contents

1 Getting to Know Your iPAQ Pocket PC

Using the Stylus	1-5
Setting the Date and Time	1-6
Setting the Time for Home and Visiting Locations	1-6
Setting the Date	1-7
Entering Owner Information	1-7
Resetting the Unit.	1-8
Performing a Normal Reset	1-8
Performing a Full Reset.	1-9
Aligning the Screen	1-10
Routine Care.	1-11

2 Using ActiveSync

Connecting to a Computer	2-2
Synchronizing with Your Computer	2-2
Using the Serial Infrared (IR) Connection	2-3
Changing Synchronization Settings.	2-4
Copying Files	2-5
Installing Applications	2-6
Backing up and Restoring	2-6
Synchronizing Links	2-7
Sending and Receiving E-mail.	2-7
Requesting Meetings	2-7

3 Managing the Battery

Installing the Battery	3-1
Removing the Battery	3-3
Charging	3-3
Charging with the AC Adapter and Charger Adapter	3-4
Charging with the Universal Desktop Cradle and AC Adapter	3-5
Charging with the Optional USB Autosync Cable	3-7
Charging a Low Battery	3-7
Preserving Battery Time	3-8
Adjusting the Standby Setting	3-8
Changing the Backlight Settings	3-10
Disabling the Application and Record Buttons	3-10
Manually Monitoring the Battery	3-11

4 Learning the Basics

Using the Today Screen	4-1
Navigation Bar and Command Bar	4-2
Status Icons	4-3
Pop-Up Menus	4-4
Creating information	4-5
Customizing the Today Screen	4-6
Using Applications	4-8
Opening Applications	4-8
Minimizing Applications	4-8
Closing Applications	4-9
Closing with iTask	4-9
Closing Manually	4-9
Installing Applications	4-9

Using iPAQ Image Viewer	4-10
Locating an Image.	4-11
Viewing Image Information	4-11
Changing the View	4-12
Creating a Slide Show.	4-13
Saving a Slide Show	4-14
Opening a Slide Show.	4-15
Sorting Image Files.	4-15
Viewing a Slide Show.	4-16
Backing Up Information	4-17
Backup/Restore using iPAQ Backup	4-17
Backup/Restore Using ActiveSync.	4-18
Using iPAQ File Store Folder	4-19

5 Learning Input Methods

Changing Word Suggestion Options	5-1
Using the On-Screen Keyboard	5-4
Writing with the Stylus and the Letter Recognizer	5-5
Writing with the Stylus and Microsoft Transcriber	5-7
Writing with the Stylus and Block Recognizer	5-8
Drawing and Writing on the Screen.	5-9
Converting Writing to Text	5-9

6 Expansion Cards

Inserting a Secure Digital (SD) Expansion Card	6–2
Removing a Secure Digital (SD) Expansion Card	6–4
Viewing the Content of Memory Cards	6–4
Using Expansion Packs	6–5
Using an Optional Single-Slot or Dual-Slot PC Card Expansion Pack	6–5
Using an Optional CompactFlash Card Expansion Pack	6–6

7 Connecting to the Internet

Using a Modem Card	7–2
Connecting to a Private Network	7–6
Entering an Internet Address	7–6
Using a Favorites List	7–7

8 Using Bluetooth

Getting Acquainted with Bluetooth	8–2
Understanding Terms	8–3
Supported Services	8–4
Working with Bluetooth Settings	8–5
Opening Bluetooth Settings	8–5
Turning on Bluetooth	8–6
Setting Accessibility Properties	8–7
Entering a Device Name	8–7
Allowing Connections	8–7
Enabling Bluetooth Services	8–9
Automatically Enabling Services	8–9
Requiring Authorization to Access Services	8–10
Secure Connections using a Passkey or Bond	8–10
Setting a Shared Folder	8–11

Understanding Profiles	8–12
Creating a Profile	8–12
Activating a Profile	8–13
Saving Bluetooth Configuration Settings in a Profile.	8–14
Renaming a Profile	8–14
Deleting a Profile	8–15
Working with Bluetooth Manager	8–15
Opening Bluetooth Manager	8–16
Locating and Selecting a Device	8–16
Pairing Devices	8–16
Unpairing Devices.	8–18
Connecting to Other Devices	8–18
Identifying the Communications Port	8–18
Establishing an ActiveSync Connection	8–19
Establishing a Serial Connection.	8–20
Dial-Up Networking	8–20
Using Dial-Up Networking.	8–20
Join a Personal Area Network	8–22
Establishing a Cell Phone Partnership.	8–22
Establishing a Headset Connection	8–22
Working with Files.	8–23
Creating a File Transfer Connection	8–23
Sending Files	8–23
Creating a Folder on a Remote Device	8–24
Receiving a File from a Remote Device	8–24
Deleting a File from a Remote Device	8–24
Using Business Card Exchange	8–25
Setting Up Your Business Card Information	8–25
Sending Business Cards.	8–27
Requesting Business Cards.	8–28
Exchanging Business Cards	8–28
Opening a Connection	8–28
Viewing Connection Status	8–29
Closing a Connection.	8–29
Viewing Connection Information	8–29

Working with Connections	8–30
Creating a Shortcut	8–30
Deleting a Shortcut	8–30
Viewing Shortcuts.	8–30

9 Using the Wireless LAN (h5500 only)

Getting Acquainted	9–1
Learning the Terms	9–2
Getting Started with the Wireless LAN	9–3
Powering the WLAN On or Off	9–3
Automatically Connecting to a Network.	9–4
Manually Entering New Network Settings	9–4
Searching for Networks to Access.	9–6
Managing Wireless Network Settings	9–7
Viewing or Editing a Wireless Network	9–7
Deleting a Wireless Network.	9–7
Monitoring Signal Strength and Status	9–8
Working with Network Settings.	9–9
Looking Up an IP Address	9–9
Changing TCP/IP Settings.	9–10
Changing DNS and WINS Settings.	9–12
Setting Up VPN Server Connections.	9–14
Changing VPN Server Connections	9–15
Starting VPN Server Connections.	9–16
Setting Up Proxy Server Settings	9–16

10 Using the Fingerprint Reader (h5500 only)

Learning to Enroll a Fingerprint	10-1
Working with Fingerprints	10-5
Enrolling a Fingerprint	10-6
Deleting a Fingerprint	10-9
Setting Logon Passwords	10-10
Setting “No password” for Logon	10-11
Setting “Simple 4 digit PIN” for Logon	10-11
Setting “Strong alphanumeric password” for Logon	10-12
Setting “PIN OR fingerprint” for Logon	10-13
Setting “PIN AND fingerprint” for Logon	10-14
Setting “Password OR fingerprint” for Logon	10-14
Setting “Password AND Fingerprint” for Logon	10-15
Setting “Fingerprint-only” for Logon	10-16
Logging On Using PIN, Passwords, and Fingerprints	10-17
Logging On with No Password	10-17
Logging On Using a 4-digit PIN	10-17
Logging On Using a Password	10-18
Logging On Using a PIN or Fingerprint	10-18
Logging On Using a PIN and Fingerprint	10-18
Logging On Using a Password or Fingerprint	10-19
Logging On Using a Password and Fingerprint	10-19
Logging On Using a Fingerprint Only	10-20
Setting Security Options	10-20
Setting the Security Level	10-21
Setting the Maximum Number of Attempts	10-22

11 Troubleshooting

Common Problems	9-1
ActiveSync	9-5
Expansion Cards	9-7
Bluetooth	9-8
Wireless LAN (h5500 only)	9-9

A Regulatory Notices

Federal Communications Commission Notice	A-1
Modifications	A-2
Cables	A-2
Declaration of Conformity for products marked with the FCC logo—United States only	A-2
Canadian Notice	A-3
Avis Canadien	A-3
Japanese Notice	A-3
European Union Notice	A-4
Battery Warning	A-5
Equipment Warning	A-5
Airline Travel Notice	A-6
Wireless Notices	A-6
U.S. Regulatory Wireless Notice	A-6
Canadian Regulatory Wireless Notice	A-6
Japanese Regulatory Wireless Notice	A-7
Brazilian Regulatory Wireless Notice	A-7

B Specifications

System Specifications	B-1
Physical Specifications	B-2
Operating Environment	B-3


Getting to Know Your iPAQ Pocket PC



Model shown in illustrations is iPAQ Pocket PC h5500 Series.

Congratulations on purchasing an HP iPAQ Pocket PC h5100 or h5500 Series. Use this guide to find out about setting up your Pocket PC and to learn about how it works.

The software applications described below are preinstalled on your iPAQ Pocket PC. These preinstalled applications are not deleted if your Pocket PC loses power.

You can find detailed information for using these applications in the Help files on your iPAQ Pocket PC. To access these Help files, from the **Start** menu, tap **Help** and select an application. For Help on applications not listed in the table below, open the application, then tap  > **Help**.

In addition, Microsoft Pocket PC Basics provides basic instructions on operating the Pocket PC. To locate Pocket PC Basics, go to the **Today** screen and tap **Start > Help**.



hp iPAQ Software	Functions
Bluetooth	Allows short-range wireless communications technology capable of exchanging information up to a distance of about 30 feet (10 meters).
iPAQ Backup	Back up your data to protect it from loss due to hardware failure, battery power failure, or accidental deletion.
iPAQ Image Viewer	Display individual images and run slide shows. Also display images from a digital camera storage card.
iTask	Manage tasks that are running, and functions as a shortcut to launch or close programs. Assigned, by default, to the fourth Application Button on the Pocket PC.

Microsoft Pocket PC Software	Functions
ActiveSync	Synchronize the information between your Pocket PC and personal computer so you have the latest information in both locations. Be sure you install ActiveSync on your personal computer before connecting the cradle and iPAQ Pocket pC to your computer.
Calculator	Perform calculations.
Calendar	Schedule appointments, meetings, and other events, then set an alarm to remind you of the appointments. Appointments for the day are displayed on the Today screen.
Connections	Connect your Pocket PC to the Internet and intranet to browse Web sites, send and receive e-mail, and synchronize information using ActiveSync.
Contacts	Keep an updated list of friends and colleagues to e-mail and telephone.
Inbox	Receive and send Internet e-mail messages in Inbox. You must have an e-mail address provided by your Internet Service Provider (ISP) or employer to send and receive e-mail.
MSN Messenger	Provide the same chat environment as MSN Messenger on your computer including seeing who is online, sending and receiving instant messages, blocking contacts from seeing your status or sending you messages.
Notes	Create handwritten or typed notes, drawings, and recordings.

Microsoft Pocket PC Software	Functions
Pictures	View individual pictures, run a slide show, or set a picture as the background on the Today screen.
Pocket Excel	Create and edit workbooks or view and edit Excel workbooks created on your personal computer.
Pocket Internet Explorer	Browse the Internet and download pages through synchronization or by connecting to the Internet.
Pocket Word	Create new documents or view and edit Word documents created on your personal computer.
Settings	Obtain quick instructions for setting the backlight, clock, contrast, memory, power, regional settings, Today screen, password, sounds and notifications, etc.
Tasks	Keep track of your to-do list.
Terminal Services Client	Use programs available on your personal computer from your Pocket PC.
Windows Media Player	Play digital audio and video files in Windows Media or MP3 format on your device.

Using the Stylus

Your iPAQ Pocket PC comes with a stylus that you should use to tap or write on your screen.



CAUTION: To prevent damage to your iPAQ Pocket PC screen, never use any device other than the stylus that comes with the Pocket PC or an approved replacement to tap or write on the screen. If you lose or break your stylus, you can order extras at www.hp.com/products/pocketpc/options.

You can perform three basic actions using the stylus:

Tap—Lightly touch the screen to select or open an item. Lift the stylus after you tap an item. Tapping is equivalent to clicking an item with the mouse on your personal computer.

Drag—Place the point of the stylus on the screen and drag an item across the screen without lifting the stylus until you have completed the selection. Dragging is equivalent to dragging with the left mouse button pressed on your personal computer mouse.

Tap and hold—Hold the stylus pointer on an item for a short time until a menu displays. Tapping and holding is equivalent to right-clicking your personal computer mouse button. When you tap and hold, a circle of red dots appears around the stylus to indicate that the menu will soon pop up.

Setting the Date and Time

When you turn on your iPAQ Pocket PC for the first time, you are requested to select your time zone. After setting the time zone, you still need to set the time and date on your unit. All three settings are located in the Clock Settings screen and can be set at the same time.



By default, the time on the iPAQ Pocket PC is synchronized with your personal computer each time the two devices connect using ActiveSync.

Setting the Time for Home and Visiting Locations

1. From the **Start** menu, tap **Settings** > **System** tab > **Clock** icon.

SHORTCUT: From the **Today** screen, tap the **Clock** icon to set the time.

2. Tap either **Home** or **Visiting**.
3. Tap the **time-zone** down arrow, then select the appropriate time zone.
4. Tap the hour, minutes, or seconds, then use the up and down arrows to adjust the time.

SHORTCUT: You can also adjust the time by moving the hands of the clock with the stylus.

5. Tap **AM** or **PM**.
6. Tap **OK**.
7. Tap **Yes** to save the time.

Setting the Date

1. From the **Start** menu, tap **Settings > System tab > Clock** icon.

SHORTCUT: From the **Today** screen, tap the **Clock** icon to set the date.

2. Tap the down arrow by the date.
3. Tap the left or right arrow to select a month and year.
4. Tap a day.
5. Tap **OK**.
6. Tap **Yes** to save the date settings.

You need to reset your time zone, time, and date if:

- The location time (Home or Visiting) needs to be changed.
- All power to the iPAQ Pocket PC is lost, which removes all saved settings.
- You perform a full reset of your iPAQ Pocket PC.

SHORTCUT: From the **Today** screen, tap the **Clock** icon to set the time zone, time, and date.

Entering Owner Information

You can personalize your iPAQ Pocket PC by entering owner information. To enter owner information:

1. From the **Today** screen, tap **Start > Settings > Owner Information**.

SHORTCUT: From the **Today** screen, tap **Tap here to set owner information**.

2. Tap in the **Name** field. A keyboard appears at the bottom of the screen. Tap on the characters to enter your name.

3. Tap the **Tab** key on the keyboard to move the cursor to the next field.
4. Continue entering whatever information you want to include.
5. To display owner information at startup, tap in the **Show information when device is turned on** checkbox.
6. Tap on the **Notes** tab to enter any notes.
7. Tap **OK** to save the information and return to the **Today** screen.

Resetting the Unit

Performing a Normal Reset

A normal reset is sometimes referred to as a “soft reset.” A normal reset stops all running applications but does not erase any programs or saved data.



CAUTION: Be sure to save any **unsaved** data before performing a normal reset since normal reset erases all **unsaved** data.


To perform a normal reset:

1. Locate the **Reset** button on the bottom of your iPAQ Pocket PC.
2. Use the stylus to lightly press the **Reset** button. The Pocket PC restarts and displays the **Today** screen.

Performing a Full Reset

A full reset is sometimes referred to as a “hard reset.” Perform a full reset when you want to clear all settings, programs, and data from RAM.

A full reset deactivates the battery. The power button does not function until the battery is reactivated.

 **CAUTION:** If you perform a full reset, your iPAQ Pocket PC returns to its default settings and loses all information that is not recorded in ROM.

To perform a full reset:

1. Press and hold Application Buttons 1 (Calendar) and 4 (iTask) on the front of the unit and, at the same time, use the stylus to press the **Reset** button on the bottom of your iPAQ Pocket PC.



2. Hold all buttons until the displayed image begins to fade (approximately four seconds).

3. Release the Application Buttons and stylus.



To verify a full reset, press the **Power** button. If the iPAQ Pocket PC has been fully reset, it does not power on.

4. Reactivate the battery by:
 - Connecting the iPAQ Pocket PC to AC power
 - or
 - Pressing the **Reset** button with the stylus

Aligning the Screen

When the iPAQ Pocket PC is turned on for the first time, you are guided through a screen alignment process. You must realign your screen if:

- The Pocket PC does not respond accurately to your taps.
- You perform a full reset of your Pocket PC.

To realign the iPAQ Pocket PC screen:

1. From the **Start** menu, tap **Settings > System tab > Screen** icon.
2. Tap the **Align Screen** button.



To use an alternate path to the same destination without tapping on the screen, press and release all four Application Buttons at the same time.

3. Tap the cross-hair object at each location. Be precise when tapping the cross-hair object.
4. Tap **OK**.

Routine Care

To keep your iPAQ Pocket PC in good condition and working properly, follow these guidelines:

- Keep your Pocket PC away from excessive moisture and temperature extremes.
- Do not expose your Pocket PC to liquids or precipitation.
- Do not place anything on top of your Pocket PC to prevent damage to the screen.
- Store your Pocket PC in a protective case when not in use.
- Clean your Pocket PC by wiping the screen and the exterior with a soft, damp cloth moistened only with water.
- Avoid exposing your Pocket PC to direct sunlight or strong ultraviolet light for extended periods of time.
- Avoid scratching the surface of the screen and banging it against hard objects.
- Use only the stylus that comes with your Pocket PC or an approved replacement on the screen to prevent scratching it.



CAUTION: To reduce the risk of electrical shock or damage to the internal components, do not spray liquid directly on the screen or allow excess liquid to drip inside your iPAQ Pocket PC. Using soap or other cleaning products on the screen may discolor the finish and damage it.

Using ActiveSync

You can use Microsoft ActiveSync to:

- Synchronize information between your iPAQ Pocket PC and your personal computer or server so that you have the latest information in all locations.
- Change synchronization settings and the synchronization schedule.
- Copy files between your device and personal computer.
- Install applications on your iPAQ Pocket PC.
- Back up and restore device information.
- Synchronize links.
- Send and receive e-mail.
- Request meetings.

Connecting to a Computer

Connect your iPAQ Pocket PC to your personal computer using Microsoft ActiveSync and the Universal Desktop Cradle, a wireless infrared connection, or Bluetooth. For more information on using ActiveSync with Bluetooth, refer to Chapter 8, “Using Bluetooth.”



When using Microsoft ActiveSync to synchronize e-mail on your personal computer with your iPAQ Pocket PC, you must have Microsoft Outlook 98 or later installed on your personal computer. Outlook 2002 is included on the Companion CD. If you do not have Outlook, install the Microsoft Outlook 2002 software from the CD. Microsoft Outlook Express will **not** work with the iPAQ Pocket PC and ActiveSync.

Synchronizing with Your Computer



CAUTION: For synchronization to work properly, install Microsoft ActiveSync on your personal computer **before** you connect your iPAQ Pocket PC to your computer.

During ActiveSync installation, you can:

- Create partnerships that enable you to synchronize information with multiple computers.
- Select information to be synchronized with your iPAQ Pocket PC (for example, Contacts, Calendar, Inbox, Tasks, Favorites, Files, Notes, and AvantGo).



When you synchronize files, you can drag and drop the selected files from your personal computer to the synchronized folder on your iPAQ Pocket PC. If you named your device “PC1” when you created your partnership, then the synchronized folder is named “PC1.” When you synchronize, the files move to your iPAQ Pocket PC.

To install Microsoft ActiveSync on your personal computer:

1. Insert the Companion CD into the CD tray or slot on your personal computer.
2. Select the link to install Microsoft ActiveSync.
3. Follow the instructions in the installation wizard. For more help, click the ActiveSync **Help** button during installation.

The information you select automatically synchronizes when your installation is complete.

4. After installing ActiveSync on your personal computer, connect the iPAQ Pocket PC to the personal computer using the Universal Desktop Cradle.

Using the Serial Infrared (IR) Connection

After setting up a connection with the USB connector on the Universal Desktop Cradle, you can synchronize your iPAQ Pocket PC and your personal computer using an infrared connection if you have an infrared port or an infrared USB adapter installed on your computer. The infrared connection option works only on computers that have Microsoft Windows 98SE, Me, 2000, or XP operating systems installed.

To set up an infrared connection to a computer:

1. Synchronize your iPAQ Pocket PC with your computer using the Universal Desktop Cradle.
2. Follow your computer manufacturer's instructions to install and set up an infrared port.
3. Remove the iPAQ Pocket PC from the cradle and line up the infrared port with the computer infrared port so they are unobstructed and within 12 inches (30.5 cm) of each other.
4. Initiate a connection by tapping **Start > ActiveSync > Tools > Connect via IR**. Synchronization begins on your device.
5. To disconnect, move the devices away from each other or tap **x** to turn off.

Changing Synchronization Settings

You can modify your synchronization settings for Microsoft ActiveSync to:

- Change when your iPAQ Pocket PC synchronizes with your personal computer or server.
- Change the type of connection from your iPAQ Pocket PC to your computer (for example, serial, USB, infrared connections).
- Select the files and information to synchronize with your computer.
- Select the files and information you do not want to synchronize with your computer (for example, e-mail attachments).
- Determine how conflicts between information on your iPAQ Pocket PC and information on your computer are handled.

To change synchronization settings:

1. From the **Start** menu on your personal computer, click **Programs > Microsoft ActiveSync > Tools > Options**.
 - a. On the **Sync Options** tab, select the files and information to synchronize with your computer.
 - b. On the **Schedule** tab, select when your iPAQ Pocket PC synchronizes with your computer.
 - c. On the **Rules** tab, determine how conflicts between information on your iPAQ Pocket PC and information on your computer are handled.
2. Tap **OK** when you are finished.
3. From the **File** menu, click **Connection Settings**. Select the type of connection to be allowed between the iPAQ Pocket PC and the computer.

Copying Files

You can copy files to and from your personal computer using **Explore** in ActiveSync and Windows Explorer.

To copy files:

1. Insert your iPAQ Pocket PC into the Universal Desktop Cradle.
2. From the **Start** menu on your computer, click **Programs > Microsoft ActiveSync**.
3. Click **Explore**.
4. Double-click the **My Pocket PC** icon.
5. On your personal computer, right-click the **Start** menu, then select **Explore**.

6. Locate the file to be moved.
7. Drag and drop your files between your iPAQ Pocket PC and your computer. ActiveSync converts the files so that they can be used by the Pocket Office applications, if necessary.



Move your files directly into My Documents on your iPAQ Pocket PC or into a folder inside My Documents, so the applications on your iPAQ Pocket PC can locate them.

Installing Applications

To install applications on your iPAQ Pocket PC from your computer using ActiveSync:

1. Connect your iPAQ Pocket PC to your personal computer using the Universal Desktop Cradle.
2. Follow the instructions provided with the application and by the installation wizard.
3. Check the screen of your iPAQ Pocket PC to see if any further steps are necessary to complete the application installation.

Backing up and Restoring

To help reduce the chance of losing information, you should back up information to your computer regularly. For more information on backing up and restoring information using Microsoft ActiveSync, refer to “Backing Up Information” in Chapter 4.

Synchronizing Links

You can synchronize links to Web sites from your **Favorites** list on your computer to view them offline with Pocket Internet Explorer.

1. From the **Start** menu on your computer, click the **Internet Explorer** icon.
2. Click **Favorites** to see the list of links to your favorite Web sites.
3. To save a Web site link to Mobile Favorites, open the Web site, then click **Create Mobile Favorite**.
4. Open ActiveSync on your computer and click **Options**. Be sure **Favorites** is checked.
5. Click **Sync** to manually synchronize your iPAQ Pocket PC with your computer and add your Mobile Favorites list to your iPAQ Pocket PC.

Sending and Receiving E-mail

You can send and receive e-mail messages by synchronizing your iPAQ Pocket PC with your personal computer using ActiveSync. If you are using ActiveSync to send and receive e-mail messages, the name of the folder you are using is displayed at the bottom of the screen. For more information on sending and receiving e-mail using ActiveSync, from the **Today** screen, tap **Start > Help > Inbox**.

Requesting Meetings

You can schedule a meeting and send a meeting request through ActiveSync. Refer to “Calendar” in the Help files on your iPAQ Pocket PC. For more information, from the **Today** screen, tap **Start > Help > Calendar**.

Managing the Battery



Model shown in illustrations is iPAQ Pocket PC h5500 Series.

Installing the Battery

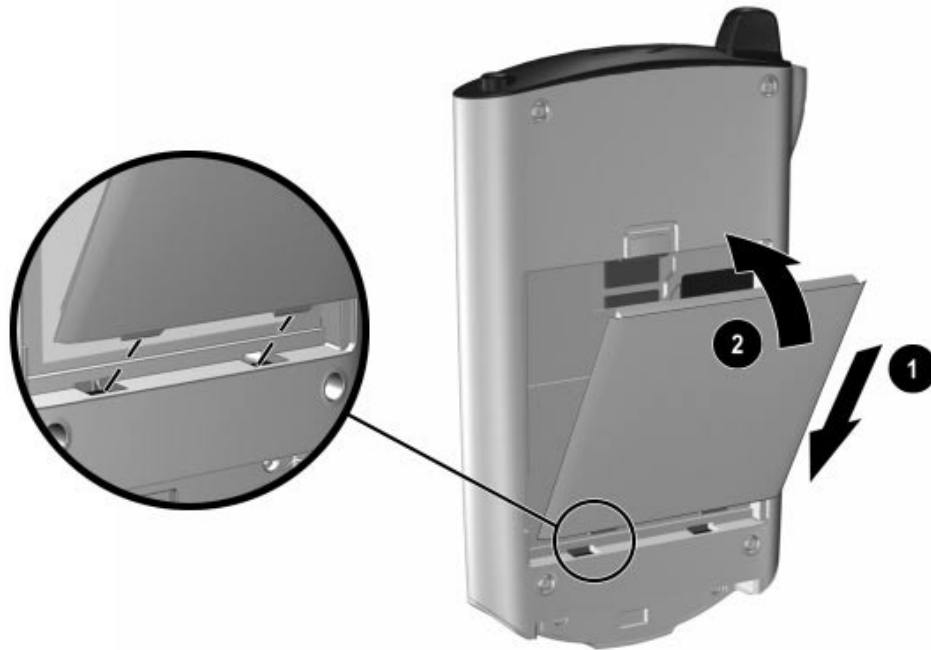
If you remove the main battery from your iPAQ Pocket PC, your device does not operate even if you try to use AC power. However, the Pocket PC has a small internal backup battery that allows you to change the main battery without losing RAM data (user-installed programs and data) as long as it is replaced within 10 minutes. If the battery is removed from the unit for longer than 10 minutes, you will lose unsaved RAM data and need to reset the unit.

It is recommended that you fully charge the iPAQ Pocket PC battery **before** setting up the unit, and recharge regularly. Your Pocket PC uses some power to maintain files in RAM and the clock. While working at your desk, keep the Pocket PC connected to the Universal Desktop Cradle. When you travel, it is recommended that you carry the AC Adapter, Charger Adapter plug, or an optional spare battery with you.

Your iPAQ Pocket PC is shipped with the battery partially charged.

To install the removable/rechargeable battery:

1. Locate the battery.
2. Insert the tabs on the bottom of the battery **1** into the slots on the iPAQ Pocket PC.
3. Push the battery upward **2** and snap into place.

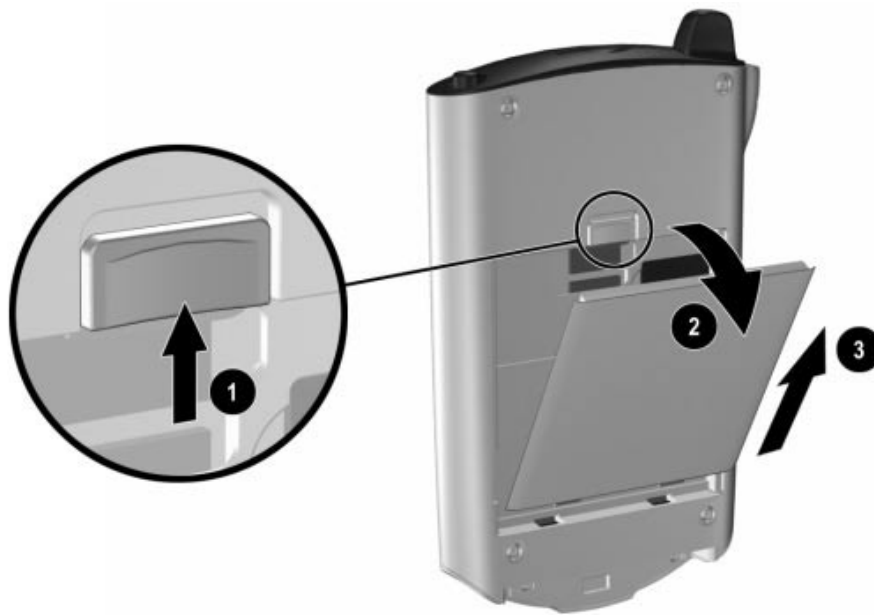


If the battery is not fully charged, you must connect the AC Adapter to the Pocket PC to fully charge it before continuing. It takes about four hours to fully charge the battery.

Removing the Battery

To remove the battery from the iPAQ Pocket PC:

1. Push up on the latch at the top of the battery ❶.
2. Pull the top of the battery away from the device ❷.
3. Lift the battery up and out of the device ❸.



CAUTION: Because most of the applications and data you install on your iPAQ Pocket PC are held in memory (RAM), you need to reinstall them if the battery completely discharges or if the battery is removed from the unit for extended periods of time.

You do not need to reinstall applications and data installed in the iPAQ File Store folder because they are saved in ROM.

Charging

To recharge the battery, use one of the following methods:

- AC Adapter with the Charger Adapter
- Universal Desktop Cradle with the AC Adapter
- Optional USB Autosync Cable

Charging with the AC Adapter and Charger Adapter

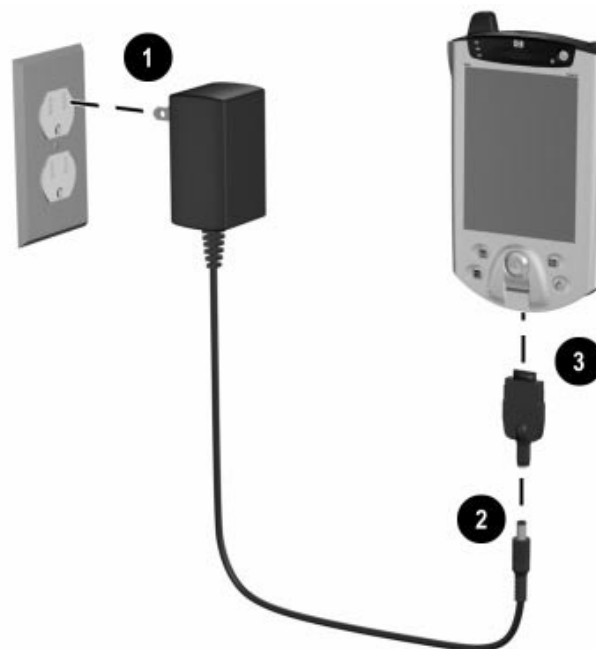
The standard AC Adapter works in any household outlet. You can also purchase one that works in your vehicle's cigarette lighter or a 12-volt power outlet.



CAUTION: Use only HP recommended AC adapters.

To charge the iPAQ Pocket PC using the AC Adapter:

1. Plug one end of the AC Adapter into an electrical outlet ❶.
2. Plug the other end of the AC Adapter into the bottom of the Charger Adapter ❷.
3. Plug the Charger Adapter ❸ into the charging port on the bottom of the iPAQ Pocket PC.



4. When the power indicator on the top of the iPAQ Pocket PC turns solid amber, the unit is fully charged and you can disconnect the AC Adapter. The approximate time to fully charge a unit is four hours.



The amber charge light blinks while the battery is recharging and turns solid (nonblinking) when the battery is fully charged.

If you receive a low backup battery warning, charge your unit immediately before removing the main battery to avoid data loss. To view the amount of charge left in the backup battery, tap **Start > Settings > System tab > Power**.


Charging with the Universal Desktop Cradle and AC Adapter

Use the Universal Desktop Cradle to:

- Charge the iPAQ Pocket PC.
- Synchronize the Pocket PC with your computer. (For information on synchronizing, refer to Chapter 2, “Using ActiveSync.”)

To charge the iPAQ Pocket PC using the Universal Desktop Cradle:

1. Plug the AC Adapter into an electrical outlet **1** and connect the other end of the AC Adapter to the AC connector on the Universal Desktop Cradle **2**.
2. Slide the bottom of your iPAQ Pocket PC into the cradle **3** and push firmly to seat it.

 **CAUTION:** To avoid damaging your iPAQ Pocket PC or the cradle, check to be sure the pins are aligned before pushing the Pocket PC into the cradle.



The amber charge light blinks while the battery is recharging and turns solid (nonblinking) when the battery is fully charged.

There are stabilizers located in the Universal Desktop Cradle. These stabilizers assist in aligning the unit when there is no expansion pack attached. When you place your iPAQ Pocket PC with an expansion pack attached into the Universal Desktop

Cradle, the stabilizers will be pushed down by the expansion pack. To release the stabilizers for use without an expansion pack, press the button on the back of the cradle.

Charging with the Optional USB Autosync Cable

You can charge your iPAQ Pocket PC using the optional USB Autosync Cable. Connect the Autosync Cable to the Pocket PC and your personal computer. The Pocket PC will be charged using power from the personal computer.

For more information on charging your Pocket PC using the optional USB Autosync Cable, from the **Today** screen, tap **Start > Settings > System tab > Power > USB Charging tab > Settings > Help**.

Charging a Low Battery

Your iPAQ Pocket PC will not power on if the battery has a low charge (less than 3.2 Volts). It is recommended that you fully charge the battery prior to using the Pocket PC.

If the charge on the battery goes below the 3.2 Volts as a result of not being connected to the Universal Desktop Cradle or the AC Adapter, no damage will occur to the battery. However, the iPAQ Pocket PC charge indicator light will **not** flash until the battery reaches the minimum charge of 3.2 Volts **and** you perform a normal reset.

To charge and reset the iPAQ Pocket PC:

1. Connect the iPAQ Pocket PC to an A/C power supply.
2. Charge the battery to the minimum level of 3.2 Volts. This will take 5 to 30 minutes depending on the current charge level.

3. Perform a normal reset (refer to “Performing a Normal Reset” in Chapter 1).
4. Power on the iPAQ Pocket PC.

It is recommended that you keep the iPAQ Pocket PC connected to the Universal Desktop Cradle or AC Adapter when it is not in use.

Preserving Battery Time

Adjusting the Standby Setting

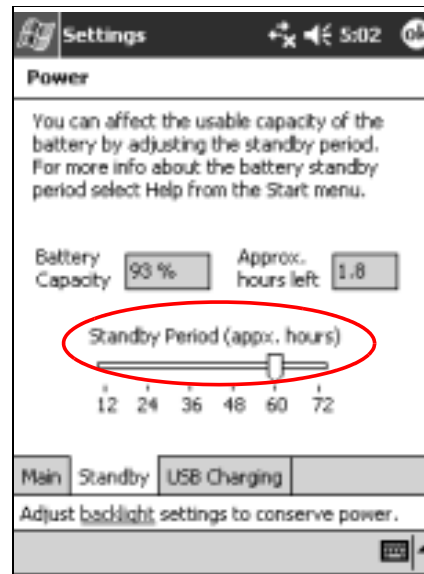
Adjusting the Standby setting can preserve battery time. During Standby, the unit turns off so very little power is being consumed. This helps to preserve programs and data stored in RAM.

- **Lower Standby Period**—Increases the usable battery time. If you use the iPAQ Pocket PC for extended periods of time, you can choose to select a lower Standby Period.
- **Higher Standby Period**—Decreases the usable battery time and allocates it for standby usage. If you leave your iPAQ Pocket PC off for extended periods of time without recharging it, you can choose to select a higher Standby Period.

For more information on using the Standby setting, tap **Start > Settings > System tab > Power icon > Standby tab > Settings > Help**.

To adjust the Standby setting:

1. From the **Start** menu, tap **Settings** > **System** tab > **Power** icon.
2. Tap the **Standby** tab.
3. Drag the pointer to adjust the standby period.



Changing the Backlight Settings

To change the backlight settings in order to conserve more battery power:

1. From the **Start** menu, tap **Settings > System tab > Backlight**.

Shortcut: Press Application Button 4 (iTask), then tap the **Light bulb** icon.

2. Select the following backlight settings:
 - Battery Power
 - External Power
 - Brightness

Disabling the Application and Record Buttons

Pressing the Application Buttons or the Record Button on your iPAQ Pocket PC will turn your device on by default. To preserve power and extend the life of your battery if you accidentally press one of these buttons, you can disable either of these functions.

To disable the Auto Power On function of the Application Buttons:

1. Tap **Start > Settings > Buttons > Lock** tab.
2. Tap in the **Disable the application buttons** checkbox.
3. Tap **OK**.

To disable the Auto Power On function of the Record Button:

1. Tap **Start > Settings > Buttons > Lock** tab.
2. Tap in the **Disable the record button** checkbox.
3. Tap **OK**.



If you disable the Auto Power On feature for the Application Buttons and the Record Button, the Power Button still turns the unit on. Once the unit is turned on, all buttons will function according to their programmed functions.

Manually Monitoring the Battery

To manually monitor the battery power:

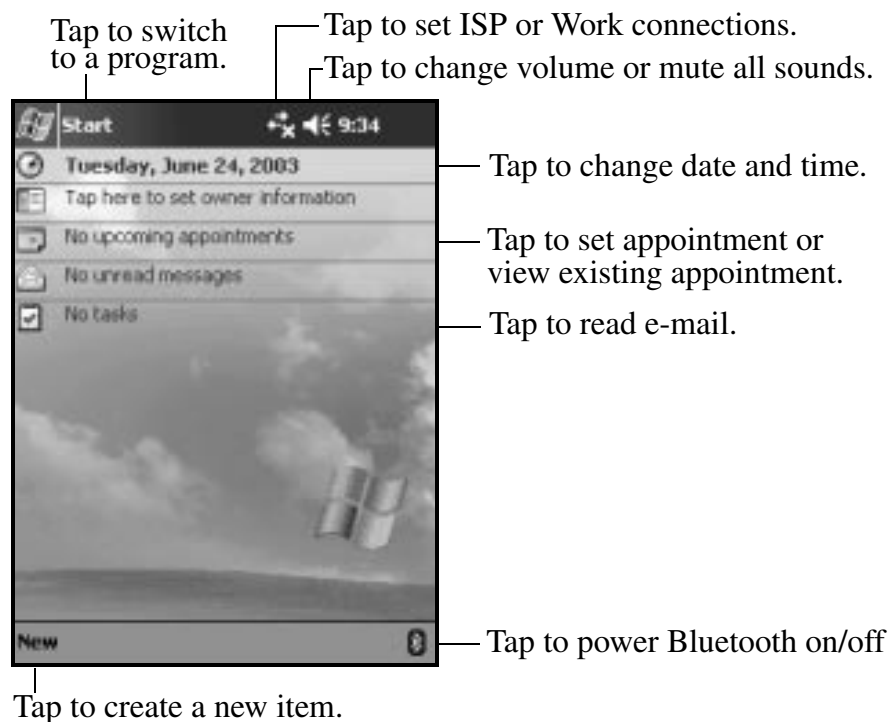
1. From the **Start** menu, tap **Settings > System** tab > **Power** icon.
2. Tap **OK**.

Learning the Basics

Using the Today Screen

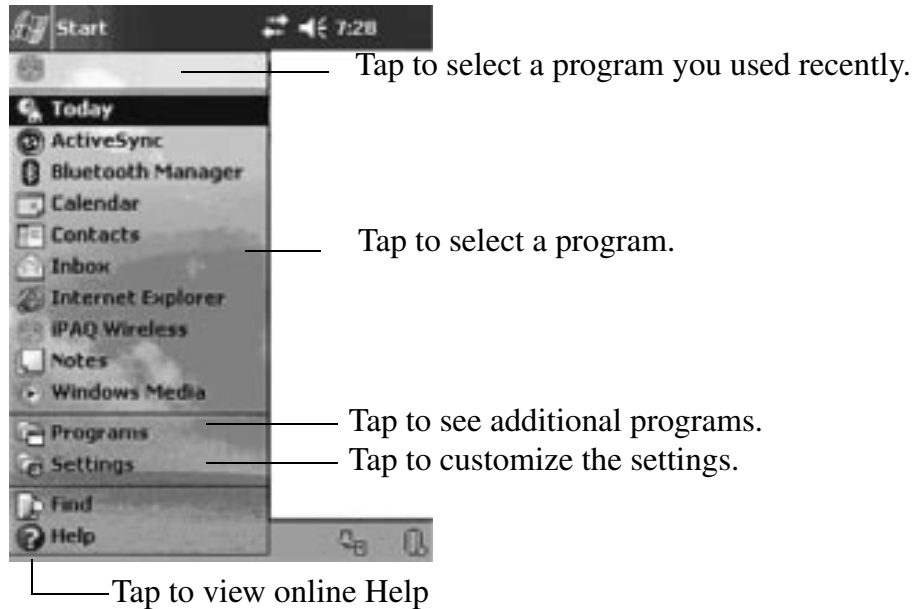
When you first turn on your iPAQ Pocket PC, the **Today** screen displays. You can also display it by tapping **Start**, then **Today**. Use the **Today** screen to view:

- Owner information
- Upcoming appointments
- Unread and unsent messages
- Tasks that need to be completed

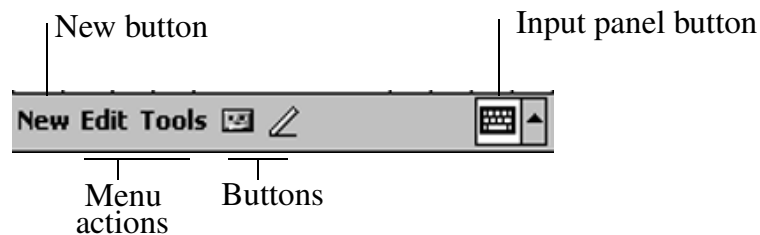


Navigation Bar and Command Bar

The Navigation bar is located at the top of the screen. It displays the active program and current time, and allows you to close screens. Use the **Start** menu to select your application.











Within each program, use the Command bar located at the bottom of the screen to perform tasks. Tap **New** to create a new item in the current program.



Status Icons

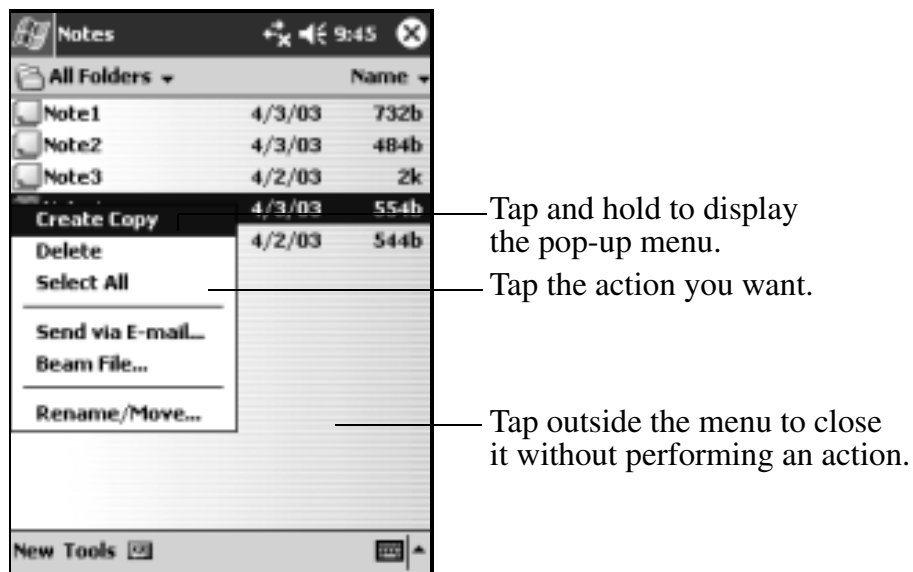
You may see the following status icons displayed on the Navigation bar or Command bar. Tap the icon on the screen to view more information related to the item.

	Active connection to wireless network.
	Inactive connection to wireless network.
	Microsoft ActiveSync is synchronizing.
	Speaker is on.
	Speaker is off.
	iPAQ Pocket PC is connected to the USB Desktop Cradle. This icon appears only when there is an active connection.
	Bluetooth power-on/off icon. When the Bluetooth icon is blue, Bluetooth is active. When the Bluetooth icon is grayed with a red X, Bluetooth is inactive.
	Wireless LAN network connection detected. (h5500 only)

Pop-Up Menus

Pop-up menus allow you to quickly perform an action. Use the pop-up menu to cut, copy, rename, and delete an item, also send an e-mail or beam a file to another device.

To access a pop-up menu, **tap** and **hold** the stylus on the name of the item on which you want to perform the action. When the menu appears, tap the desired action, or tap anywhere outside the menu to close it without performing an action.



Creating information

From the **Today** screen, you can create new information, including:

- Appointments
- Contacts
- E-mail
- Excel Workbook Information
- Notes
- Tasks
- Word documents

1. From the **Today** screen, tap **New**.

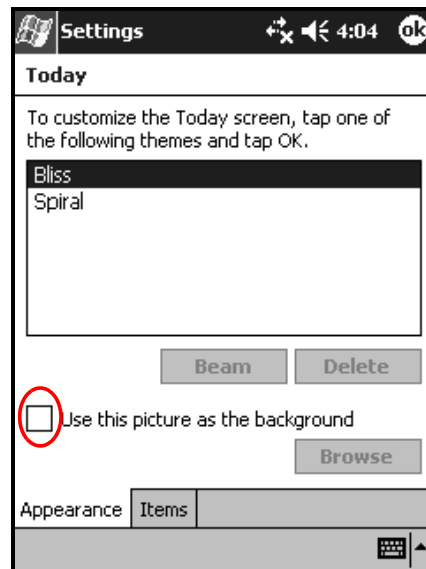


2. Tap an option to create a new item.
3. Tap **OK** after you finished creating a new item.

Customizing the Today Screen

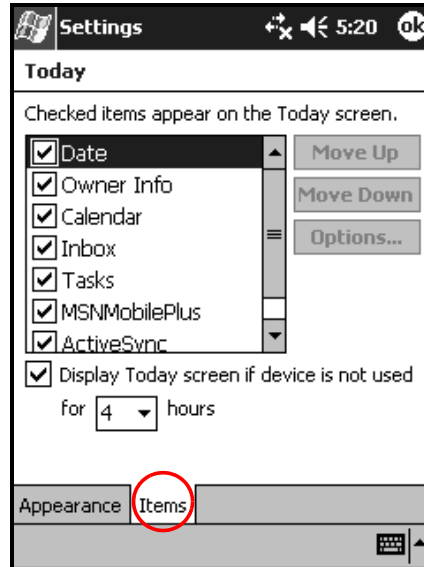
From the **Settings Today** screen, you can:

- Add a picture as the background.
 - Select the information you see.
 - Set the order of the information.
 - Set when to see the **Today** screen.
1. From the **Today** screen, tap **Start > Settings > Today**.
 2. Select the **Use this picture as the background** checkbox.



3. Tap **Browse** to select a picture from File Explorer.

4. Tap the **Items** tab to select or reorder the information on the **Today** screen.



5. Tap an item to highlight it.
6. Tap **Move Up** or **Move Down** to change the order of items on the **Today** screen.



You cannot change the placement of the **Date** on the **Today** screen.

7. Tap the down arrow next to the **Display Today screen if device is not used for...hours** checkbox to determine how many hours must pass before the **Today** screen displays.
8. Tap **OK**.

Using Applications

Opening Applications

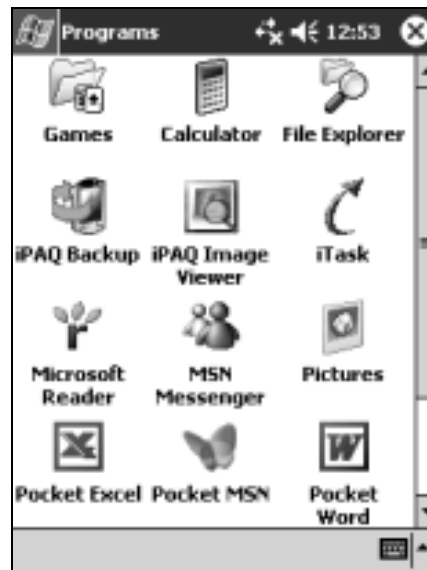
Open any application on your iPAQ Pocket PC from the **Start** menu.



You can also open an application by assigning it to an Application Button. To assign Application Buttons, from the **Today** screen, tap **Start > Settings > Buttons**.

To open an application:

1. Tap **Start > Programs**.
2. Tap the desired application title or logo.



Minimizing Applications

To minimize an open application, tap the **x** at the top right of the screen.

Closing Applications

Applications automatically close based on available memory. However, if your iPAQ Pocket PC is running slowly, you can close applications using iTask or by manually closing them.

Closing with iTask

1. Press the **iTask** button (Application Button 4 on the lower right side of your unit).
2. Tap and hold the program to be closed.
3. From the pop-up menu, tap **Close This Task**.

Closing Manually

1. From the **Start** menu, tap **Settings > System tab > Memory > Running Programs** tab.
2. Tap **Stop All** or select a particular application, then tap **Stop**.



To bring a currently running program to the foreground, tap **Activate**.

Installing Applications

Install applications on your iPAQ Pocket PC from your:

- Personal computer by using Microsoft ActiveSync.
- iPAQ Pocket PC if the application file has a .cab extension.
- iPAQ Pocket PC or your computer by copying an application file that has an .exe or .cef extension.

When installing applications, look for the correct version for your iPAQ model or Pocket PC 2003.

- Follow the instructions provided with the application and by the installation Wizard to install applications from your computer.
- Tap the application file in File Explorer on your iPAQ Pocket PC and follow the instructions on the installation Wizard to install applications on your Pocket PC.

Using iPAQ Image Viewer

You can use the **iPAQ Image Viewer** to view images with .bmp, .jpg, and .gif file extensions.

Using the Image Viewer, you can:

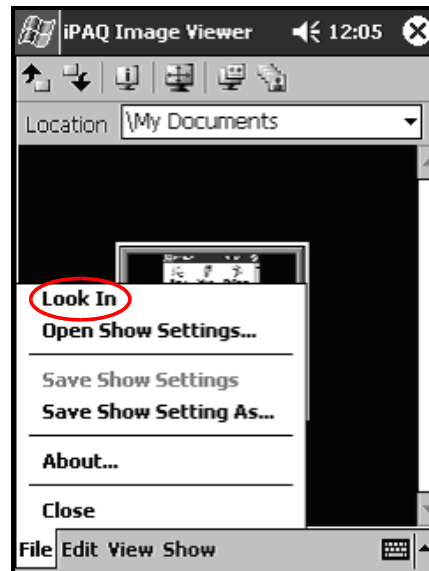
- Create a slide show of images.
- Sort and rotate images.
- Adjust the timing between images in a show.
- Set a variety of transition effects.



Your iPAQ Pocket PC is capable of handling large files and resizing photo images to screen size.

Locating an Image

1. From the **Start** menu, tap **Programs > iPAQ Image Viewer**.
2. Tap the **File** tab > **Look In**.



3. Select a file, then tap **OK**.

Viewing Image Information

You can view the image size and type, date taken and modified, color, and file size of an image.

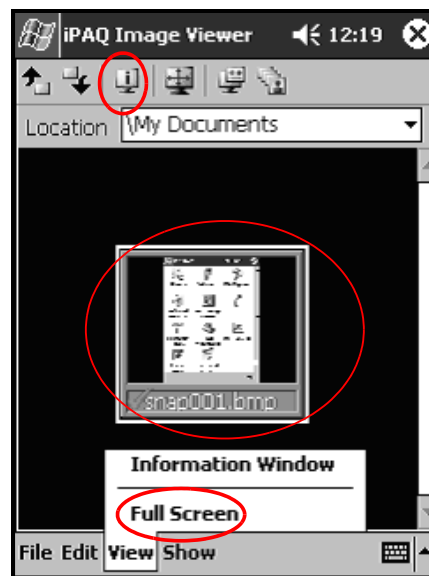
To view image information:

1. Locate an image and tap it to select it.
2. Tap **View > Information Window**.

Changing the View

By default, the Image Viewer opens displaying the images in the **Thumbnail View**. You can change the view to full screen by:

- Double-tapping a thumbnail.
- Tapping **View > Full Screen**.
- Tapping the **View Full Screen** icon.



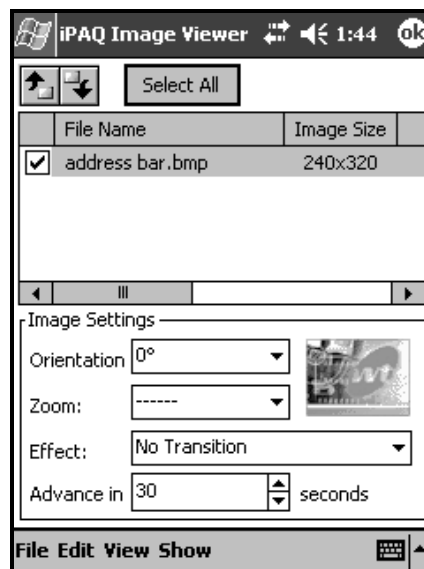
Creating a Slide Show

You can put images together to create a slide show and control display options such as:

- Orientation
- Zoom
- Image Quality
- Transition Effect
- Timing

To create a slide show:

1. From the **Today** screen, tap **Start > Programs > iPAQ Image Viewer**.
2. Tap **Show > Set up Show...** .
3. Select images for the show and modify any image settings.



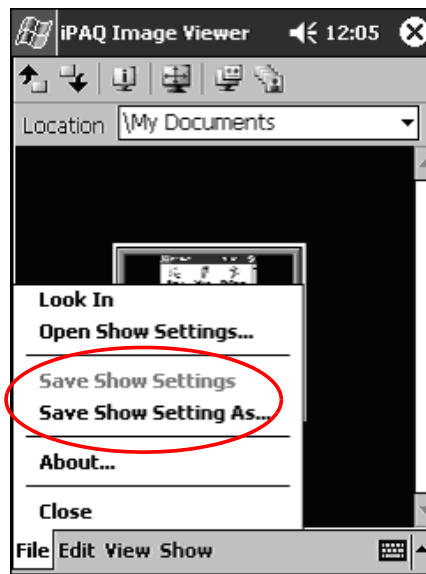
To change settings for all images in the show, tap the **Select All** button.

4. Tap **OK**.

Saving a Slide Show

To save a slide show:

1. From the **Today** screen, tap **Start > Programs > iPAQ Image Viewer**.
2. Create a slide show.
3. Tap **File > Save Show Settings** or **Save Show Settings As... .**

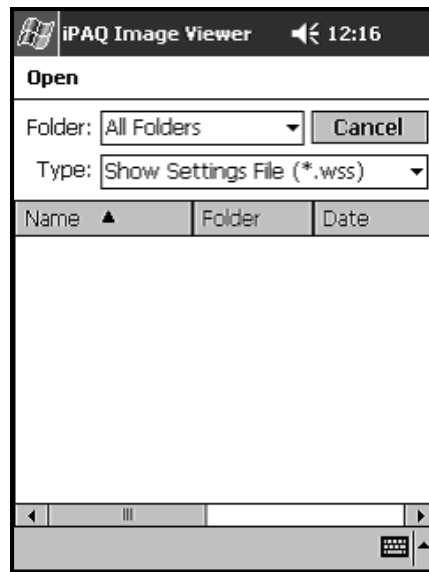


4. Enter a name and the location where you want to save the settings.
5. Tap **OK**.

Opening a Slide Show

To open a slide show:

1. From the **Today** screen, tap **Start > Programs > iPAQ Image Viewer**.
2. Tap **File**, then **Open Show Settings...** .
3. Select a show setting.



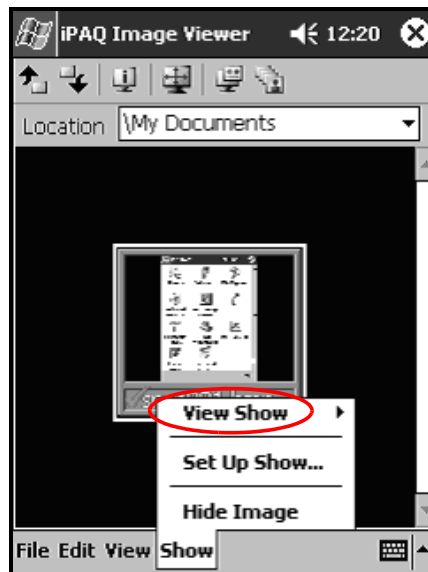
Sorting Image Files

To sort image files:

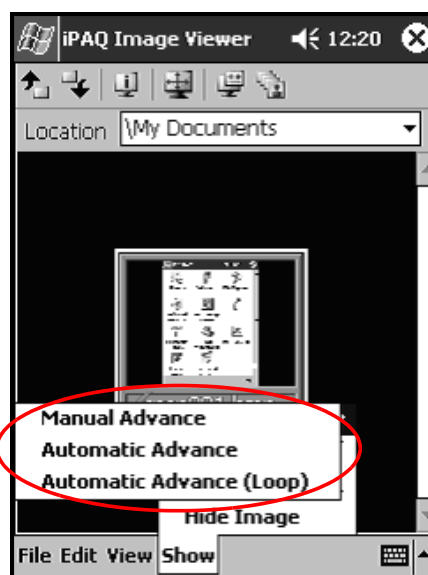
1. From the **Today** screen, tap **Start > Programs > iPAQ Image Viewer**.
2. Tap **Edit > Sort Images**.
3. Select sort order. You can sort by ascending or descending **Name, Type, Size, or Date**.

Viewing a Slide Show

1. From the **Today** screen, tap **Start > Programs > iPAQ Image Viewer**.
2. Create or open an existing slide show.
3. Tap the **Show** tab > **View Show**.



4. Select a method for advancing the images in the show: **Manual Advance**, **Automatic Advance**, or **Automatic Advance (Loop)**.



Backing Up Information

Use iPAQ Backup or Microsoft ActiveSync Backup to back up and restore information on your iPAQ Pocket PC.



iPAQ Backup is already installed on the iPAQ Pocket PC. You must install ActiveSync on your personal computer before using ActiveSync Backup.

To help reduce the chance of losing information, you should back up information on a regular schedule.

Backup/Restore using iPAQ Backup

iPAQ Backup saves your data in a backup file. You may designate a file name and a location for the file to be saved. iPAQ Backup backs up to a memory card, main memory, or the iPAQ File Store folder.

Close all applications on your iPAQ Pocket PC before backing up or restoring your information.



CAUTION: Restoring your information replaces the current information on your iPAQ Pocket PC with the information saved in your backup.

To backup/restore using iPAQ Backup:

1. From the **Today** screen, tap **Start > Programs > iPAQ Backup**.
2. Tap the **Backup** tab or the **Restore** tab.
3. Select the files and folders to be backed up or restored.
4. Select file location for backed-up data.
5. Set backup or restore options.

6. Press the **Backup** or **Restore** button, then press the **Start** button on the next screen.

For more information on backing up or restoring files, from the **Backup** or **Restore** tab, tap **iPAQ Backup > Help**.

Backup/Restore Using ActiveSync

Close all applications on your iPAQ Pocket PC before backing up or restoring your information.



CAUTION: Restoring your information replaces the current information on your iPAQ Pocket PC with the information saved in your backup.

To backup/restore using ActiveSync:

1. Be sure the iPAQ Pocket PC is connected to your personal computer.
2. From your personal computer, open Microsoft ActiveSync. From the **Start** menu, click **Programs > Microsoft ActiveSync**.
3. From the **Tools** menu, click **Backup/Restore**.
4. Click the **Backup** or **Restore** tab, then select your options.
5. Click **Backup Now** or **Restore Now**.

Using iPAQ File Store Folder

You can install applications and save files to the iPAQ File Store folder, which is accessed from File Explorer on your iPAQ Pocket PC.

Applications and files stored in iPAQ File Store are held in read-only memory (ROM) and are saved if you perform a full reset of your iPAQ Pocket PC or if the battery discharges completely.

To save to iPAQ File Store:

1. Copy the files to be saved to the iPAQ File Store folder.
2. From the **Start** menu, tap **Programs > File Explorer > My Device > iPAQ File Store**.
3. Paste the selected files.



Before saving files to the iPAQ File Store folder, it is a good idea to determine how much memory is available in the folder. To view the amount of memory, from the **Start** menu, tap **Settings > System** tab > **Memory > Storage Card** tab. Select **iPAQ File Store** from the drop down menu.

Learning Input Methods



CAUTION: To avoid damaging your iPAQ Pocket PC screen, always use a stylus. Never use a pen or any type of metal pointer on the screen.

To input information to your iPAQ Pocket PC, you can tap the keyboard or write with the Letter Recognizer, Microsoft Transcriber, or Block Recognizer in any application. You can use the stylus to draw and write on the screen in the Notes application and from any **Notes** tab in the Calendar, Contacts, and Tasks applications.

Changing Word Suggestion Options

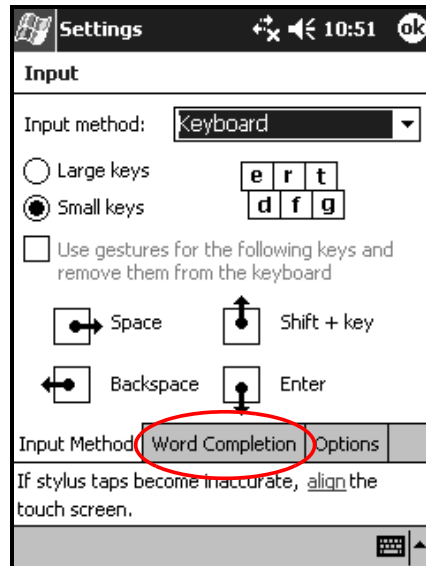
As you type or write, the Pocket PC suggests words for you in a box above the Keyboard, Letter Recognizer, or Block Recognizer but not in Transcriber. You determine:

- If words are suggested.
- The number of letters you enter before a word is suggested.
- The number of words that are suggested per entry.

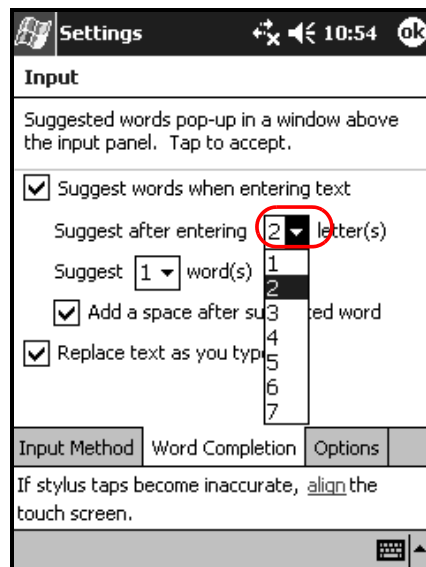
If you do not want any words suggested, remove the checkmark by tapping the **Suggest Words When Entering Text** checkbox.

To change settings for word suggestions:

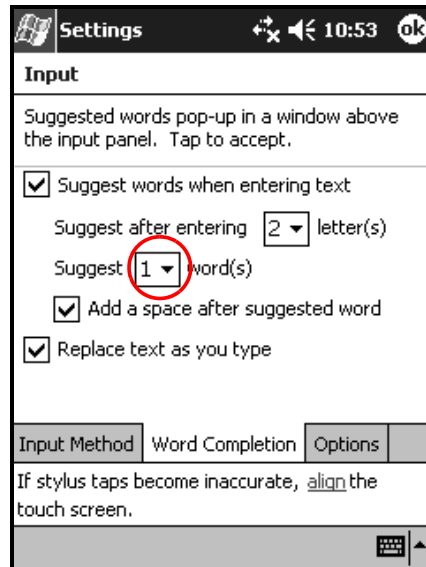
1. From the **Today** screen, tap **Start > Settings > Input**.
2. Tap the **Word Completion** tab.



3. Tap the down arrow associated with letters and select the number of letters you want to type before a word is suggested.



4. Tap the down arrow associated with words and select the number of words you want suggested.

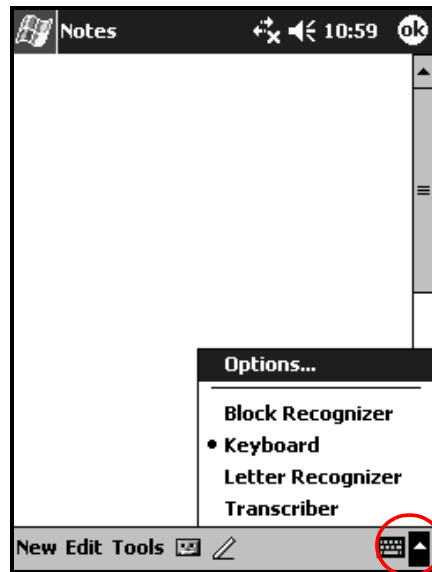


5. Tap **OK**.

Using the On-Screen Keyboard

Use the stylus to tap letters, numbers, and symbols on the on-screen keyboard to enter typed text directly onto the screen.

1. From any application, tap the up arrow next to the **Input Panel** icon.



2. Tap **Keyboard** to display a keyboard on the screen.



To see symbols, tap the **123** or **Shift** key.

3. Tap a letter, symbol, or number to enter information.
4. Tap **OK**.

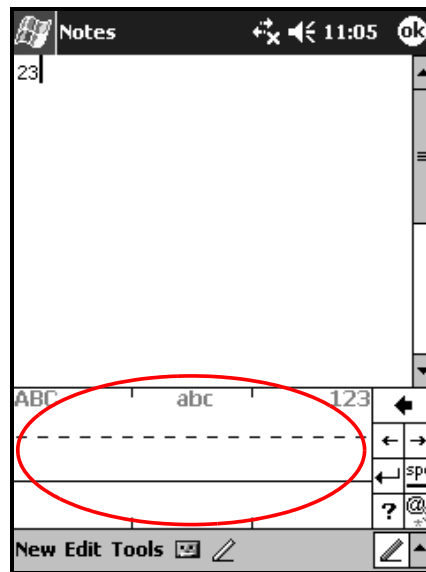
Writing with the Stylus and the Letter Recognizer

Use the stylus and Letter Recognizer to write letters, numbers, and symbols on the screen. Create words and sentences by writing in uppercase (ABC), lowercase (abc), and symbols (123) as instructed here.

To write with the stylus and Letter Recognizer:

1. From any application, tap the up arrow next to the **Input Panel** icon.
2. Tap **Letter Recognizer**.
3. Write a letter or symbol between the dashed line and baseline.
 - a. To display in uppercase, write a letter between the hatch marks labeled **ABC**.
 - b. To display in lowercase, write a letter between the hatch marks labeled **abc**.
 - c. To display a number or symbol, write the number or symbol between the hatch marks labeled **123**.

What you write will be converted to text.



A question mark within an application indicates a **Help** file.



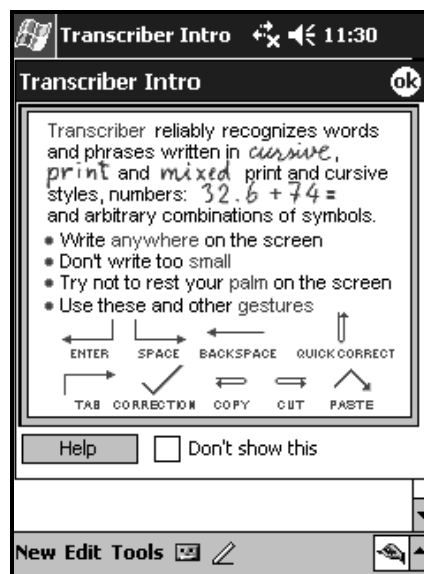
For the Letter Recognizer to work effectively, write characters between the dashed line and baseline.

- If you are writing a letter like “p,” write the top portion within the dashed line and baseline, and the tail portion below the baseline.
 - If you writing a letter like “b,” write the bottom portion within the dashed line and baseline, and the top portion above the dashed line.
-

Writing with the Stylus and Microsoft Transcriber

Use the stylus and Microsoft Transcriber to write words, letters, numbers, and symbols anywhere on the screen.

1. From any application, tap the up arrow next to the **Input Panel** icon.
2. Tap **Transcriber** to display the **Transcriber Intro** screen.



3. Tap **OK**.
4. Tap **New** at the bottom of the screen.
5. Begin writing on the screen. What you write will be converted to text.



To “teach” Transcriber your style of writing, tap on the “*a*” icon at the bottom of the screen to display the **Letter Shapes** screen and follow the instructions.

Writing with the Stylus and Block Recognizer

Write letters, numbers, and symbols using the stylus and Block Recognizer. Create words and sentences by writing letters and numbers in specific areas.

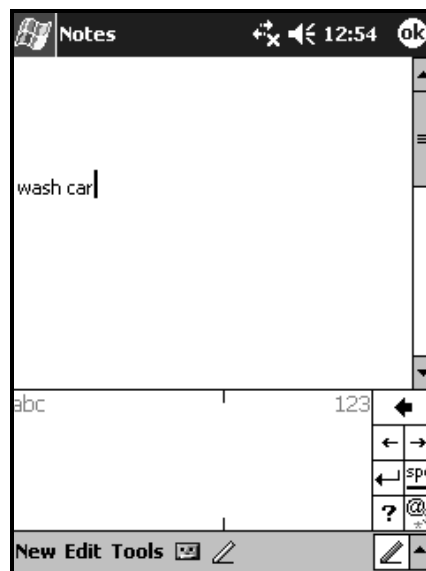
1. From any application, tap the up arrow next to the **Input Panel** button.
2. Tap **Block Recognizer**.



For online Help, tap the **?**

3. Write a word, letter, or symbol between the hatch marks.
 - a. To type text, write a letter between the hatch marks labeled “abc.”
 - b. To type numbers or symbols, write a number or symbol between the hatch marks labeled “123.”

What you write will be converted to text.



Drawing and Writing on the Screen

Use the stylus as a pen to draw and write on the screen in the Notes application or from the **Notes** tab in Calendar, Contacts, or Tasks.

1. From the **Start** menu, tap **Notes > New**.
2. Draw and write on the screen.
3. Tap the **Pen** icon.
4. Tap **OK**.

Converting Writing to Text

You can convert your writing to text when you write with the stylus in the Notes application or from the Notes tab in:

- Calendar
- Contacts
- Tasks

To convert writing to text:

1. From the **Start** menu, tap **Notes**.



Otherwise, tap the **Notes** tab in Calendar, Contacts, or Tasks.

2. Tap a note to open it.
3. Tap **Tools**.
4. Tap **Recognize**.



To convert a particular word or phrase, disable the pen icon by tapping it, then highlight the word or phrase before you tap **Recognize**. If a word is not recognized, it will not be converted.

5. Tap **OK**.

Expansion Cards



Model shown in illustrations is iPAQ Pocket PC h5500 Series.

You can expand the memory and connectivity of your iPAQ Pocket PC. Use optional expansion cards for:

- Connecting wirelessly or connecting by using a cable to the Internet or to a network.
- Adding functionality such as a digital camera.
- Expanding the memory of your iPAQ Pocket PC.
- Viewing the content of memory cards.



Expansion cards must be purchased separately and are not included with your iPAQ Pocket PC.

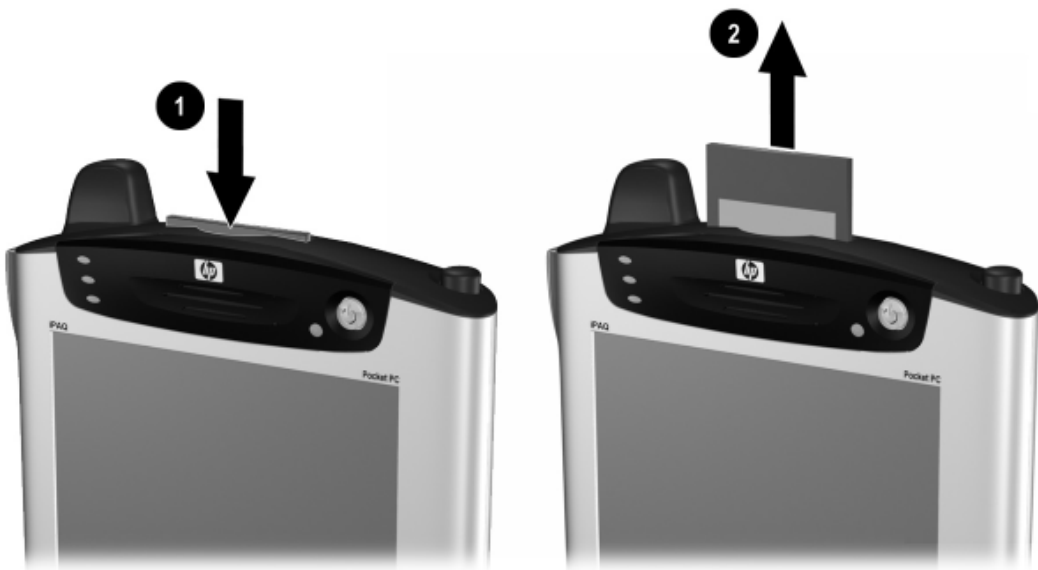
To locate information about expansion cards, visit the following HP Web site:

www.hp.com/products/pocketpc/options

Inserting a Secure Digital (SD) Expansion Card

To install a Secure Digital (SD) card into the expansion slot on the iPAQ Pocket PC:

1. Locate the SDIO slot on the top of the iPAQ Pocket PC.
2. Before inserting an SD card into the SDIO slot, push in **1**, then pull out **2** the plastic slot cover from the SDIO slot.



3. Insert the expansion card into the SDIO expansion slot and push the connection edge of the card firmly into the expansion slot.



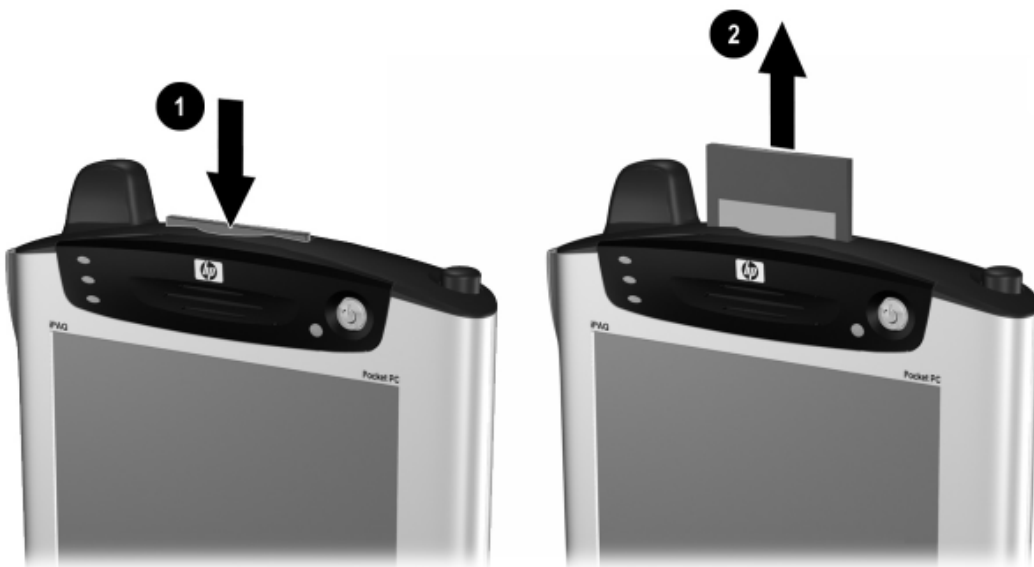
If your expansion card is not recognized, follow the card manufacturer's instructions to install it.



To prevent power loss, remove any expansion cards from the SD expansion slot before turning off the iPAQ Pocket PC.

Removing a Secure Digital (SD) Expansion Card

1. Close all applications that are using the expansion card.
2. Remove a card from the Secure Digital expansion slot by slightly pushing down on the card ① to unlock it.



3. When the card disengages and pops up ②, pull it from the expansion slot.



CAUTION: SD cards must first be unlocked before removal. Failure to do so will result in damage to the device and card.

Viewing the Content of Memory Cards

Use File Explorer to view the files that are located on your optional Secure Digital card.

1. From the **Start** menu, tap **Programs > File Explorer**.
2. Tap the root directory of **My Device**, and select the appropriate Storage Card folder to see a list of files and folders.

Using Expansion Packs

If you would like to increase the storage and connectivity of your iPAQ Pocket PC, use the optional:

- Single-Slot or Dual-Slot PC Card Expansion Pack
- CompactFlash Card Expansion Pack
- Expansion Pack Plus

Using an Optional Single-Slot or Dual-Slot PC Card Expansion Pack

You can use the optional Single-Slot or Dual-Slot PC Card Expansion Pack to:

- Create dial-up and wireless connections with optional cards
- Expand memory with optional cards
- Attach options
- Hold two Type II cards or one Type III card (Dual-Slot PC Card Expansion Pack only)



CAUTION: You cannot install CompactFlash (CF) cards into the Single-Slot or Dual-Slot PC Card Expansion Pack unless you have a PC Card adapter. Otherwise, install CompactFlash cards only into the CF Card Expansion Pack.

To install an optional Single-Slot or Dual-Slot PC Card Expansion Pack:

1. Slide the iPAQ Pocket PC into the expansion pack until it snaps into place.
2. Push firmly to attach the iPAQ Pocket PC connector to the expansion pack. The iPAQ Pocket PC automatically recognizes the expansion pack.

Using an Optional CompactFlash Card Expansion Pack

You can use the optional CompactFlash (CF) Card Expansion Pack to:

- Create a dial-up connection with optional cards
- Expand memory with optional cards
- Hold Type I or Type II cards



CAUTION: Use CompactFlash cards only in the CF Expansion Pack.

To install an optional CompactFlash Card Expansion Pack:

1. Slide the iPAQ Pocket PC into the expansion pack until it snaps into place.
2. Push firmly to attach the iPAQ Pocket PC connector to the expansion pack. The iPAQ Pocket PC automatically recognizes the expansion pack.

Connecting to the Internet

Use your iPAQ Pocket PC to connect to the Internet or your Work network.

To send and receive e-mail with Inbox and to view Web sites with Pocket Internet Explorer, you must set up a remote connection with devices such as a Secure Digital Input/Output (SDIO) modem card, optional Expansion Pack with CompactFlash (CF) modem card installed, ethernet card, or a wireless 802.11x card. Another option is to use a Bluetooth-enabled device such as a phone or LAN Access point.



Use of dial-up and wireless Internet, e-mail, corporate networks, and other wireless communications, such as Bluetooth-enabled devices, may require separately purchased additional hardware and other compatible equipment, in addition to a standard Wireless LAN (WLAN) infrastructure and a separately purchased service contract. Check with your service provider for availability and coverage in your area. Not all Web content may be available. Some Web content may require installation of additional software.



For more information on this subject, refer to the Help file on your iPAQ Pocket PC by tapping **Start > Help > Connections**.

Using a Modem Card

To connect to the Internet with a modem card, you need a phone line, a dial-up Internet Service Provider (ISP) or a Work Internet connection, and an optional Single-Slot or Dual-Slot PC Card Expansion Pack, Expansion Pack Plus, or CompactFlash (CF) Card Expansion Pack.

You must also obtain the following information from your ISP or your network administrator: telephone number, user name, password, domain name, and TCP/IP settings.



Insert your modem card before trying to set up a modem connection.

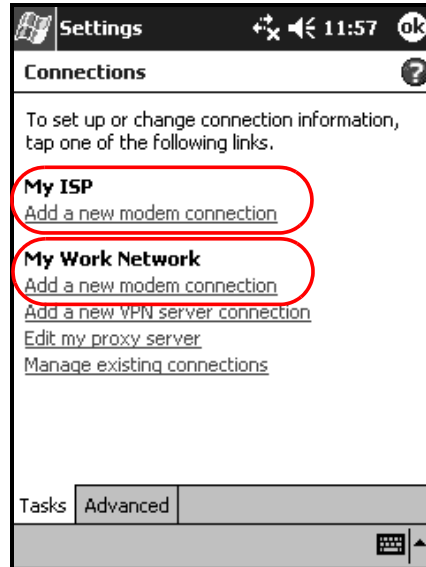
1. Insert your modem card into an expansion pack.
-



If your modem card is not recognized, follow your modem manufacturer's instructions to install the modem card driver on your iPAQ Pocket PC.

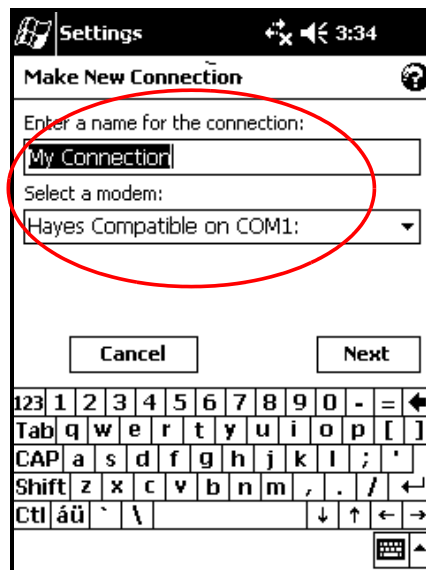
2. From the **Start** menu, tap **Settings > Connections** tab > **Connections** icon.

3. Under **My ISP** or **My Work Network**, tap **Add a new modem connection**.



To view additional information on any screen or while changing settings, tap the **?**.

4. Enter a name for the connection, select the modem type, then tap **Next**.



5. Enter the phone number exactly as it is dialed, then tap **Next**.
6. Enter your user name, password, and domain.

Settings 4:16

My Connection

User name:

Password:

Domain:*

* If provided by ISP or network administrator.

Advanced...

Cancel Back Finish

7. If you need to enter the specific TCP/IP settings, tap **Advanced**, then tap the **TCP/IP** tab.
8. Select “Use specific IP address.”

Settings 3:36 ok

Advanced

Use server assigned IP address

Use specific IP address

Use slip

Use software compression

Use IP header compression

General Port Settings TCP/IP Servers

123 1 2 3 4 5 6 7 8 9 0 - =

Tab q w e r t y u i o p []

CAP a s d f g h j k l ; ' "

Shift z x c v b n m , . / ←

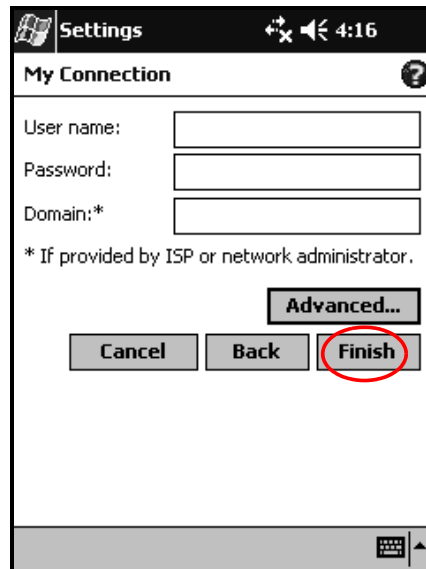
Ctl áü ` \ ↓ ↑ ← →

9. Enter your IP address.



If your private network does not use dynamically-assigned IP addresses, ask your network administrator for the address.

10. Tap **OK** > **Finish**.



11. Tap **OK** twice to return to the **Today** screen.



For information on connecting to the Internet using Bluetooth, refer to Chapter 8, “Using Bluetooth.” For information on connecting to the Internet using Wireless LAN, refer to Chapter 9, “Using the Wireless LAN.”

Connecting to a Private Network

1. Before you start, be sure to have your server phone number, user name, and password. This information can be obtained from your network administrator.
2. Tap **Start > Settings > Connections** tab > **Connections** icon.
3. In **My Work Network**, set up a new modem connection, new VPN Server connection, or proxy server connection.
4. Start the connection by inserting the necessary modem card into the iPAQ Pocket PC, and start using Pocket Internet Explorer. Your device automatically begins connecting.

Entering an Internet Address

With Pocket Internet Explorer and a connection to the Internet, you can view Web sites on your iPAQ Pocket PC by typing an address or Universal Resource Locator (URL) in the **Address** bar.



Web sites that use HTML 4.0, DHTML, animated GIF images, and Java applets may not work correctly in Pocket Internet Explorer without additional software.

To enter an Internet address (URL) on your iPAQ Pocket PC:

1. From the **Start** menu, tap **Internet Explorer > Address Bar**.



If the Address Bar is not visible, tap the **View** tab > **Address Bar** to turn it on.

2. Enter the Internet address (URL) in the **Address** bar.



3. Tap the **Go** icon.

Using a Favorites List

With Pocket Internet Explorer and a connection to the Internet, you can view Web sites on your iPAQ Pocket PC by selecting one from your **Favorites** list.

To select a Web site from your **Favorites** list:

1. From the **Start** menu, tap **Internet Explorer**.
2. Tap the **Favorites** icon and the Web site you want to view.

Using Bluetooth

This iPAQ Pocket PC comes with built-in Bluetooth technology that allows short-range connections and provides fast, reliable, and secure wireless communication.

With Bluetooth powered on, you can send information or perform the following tasks wirelessly between two Bluetooth devices, within a range of approximately 10 meters (30 feet):

- Exchange contacts, calendar items, and tasks
- Send or exchange business cards
- Transfer files
- Synchronize with a computer through an ActiveSync connection
- Partner with a Bluetooth-enabled cell phone and use as a wireless modem
- Connect to other Bluetooth devices (Virtual COM port)
- Connect to Bluetooth wireless local area networks (WLANs)
- Print to a Bluetooth printer
- Create a personal area network (PAN) to chat, play games, etc.
- Use a Bluetooth headset



Use of dial-up and wireless Internet, e-mail, corporate networks, and other wireless communications, such as Bluetooth-enabled devices, may require separately purchased additional hardware and other compatible equipment, in addition to a standard Wireless LAN (WLAN) infrastructure and a separately purchased service contract. Check with your service provider for availability and coverage in your area. Not all Web content may be available. Some Web content may require installation of additional software.

Getting Acquainted with Bluetooth

Before you start using Bluetooth to establish wireless connections, take a few minutes and familiarize yourself with:

- Terms used in this chapter
- Supported Services
- Bluetooth Settings
- Bluetooth Manager



For more detailed help, refer to the Help files installed on your iPAQ Pocket PC. From the **Start** menu, tap **Help > Bluetooth**.

Understanding Terms

The following Bluetooth terms are used throughout this chapter.

The Term...	Means...
Authentication	Verification of a numeric passkey before a connection or activity can be completed.
Authorization	Approval of a connection or activity before it can be completed.
Bonding (Paired devices)	Create a trusted connection between your device and another. After a bond is created, the two devices become paired. A paired device does not require authentication or authorization.
Device address	Unique electronic address of a Bluetooth device.
Device discovery	Location and recognition of another Bluetooth device.
Device name	Name that a Bluetooth device provides when discovered by another device.
Encryption	Method of protecting data.
Link key	Code used to securely pair devices.
Passkey	Code you enter to authenticate connections or activities requested by other devices.
Personal Information Manager (PIM)	Collection of applications used to manage daily business tasks (for example, Contacts, Calendar, and Tasks).
Profiles	Collection of Bluetooth settings.
Service discovery	Determination of which applications you have in common with other devices.

Supported Services

The functions that Bluetooth supports are called services. You can communicate only with Bluetooth devices that support at least one of the following services:

- BPP (Basic Printer profile)
- DUN (Dial-up Networking profile)
- FAX
- FTP (File Transfer profile)
- GAP (Generic Access profile)
- HCRP (Hard Cable Replacement profile)
- LAP (LAN Access profile)
- OBEX (Object Exchange profile)
- OPP (Object Push profile)
- PAN (Personal Area Network profile)
- SPP (Serial Port profile)
- ActiveSync (Uses SPP to connect to ActiveSync on computer)
- AGP (Audio Gateway Profile)

Working with Bluetooth Settings

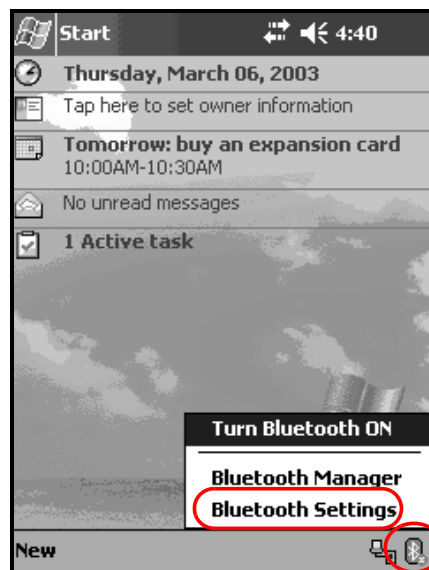
From the tabs in **Bluetooth Settings**, you can:

- Turn Bluetooth on and off
- Enter or change your iPAQ Pocket PC Bluetooth name
- Set your connection preferences
- Enable Bluetooth services
- Specify security settings
- Define settings for sharing and connecting
- Select a user profile
- View software and port information

Use the arrows to the right to scroll through the tabs.

Opening Bluetooth Settings

1. From the **Today** screen, tap the **Bluetooth** icon.
2. From the pop-up menu, tap **Bluetooth Settings**.



Turning on Bluetooth

To turn on Bluetooth from Bluetooth Settings:

1. From the **Today** screen, tap the **Bluetooth** icon.
2. From the pop-up menu, tap **Bluetooth Settings**.
3. Tap the **Turn on** button to enable.

SHORTCUTS: There are two shortcuts for turning on Bluetooth.

- From the Bluetooth pop-up menu, tap **Turn Bluetooth ON**.
- From the **Today** screen, tap **Start > Bluetooth Manager** to automatically turn on Bluetooth.

When Bluetooth is turned on, the **Bluetooth** icon turns blue and the left LED on the iPAQ Pocket PC blinks blue. To preserve battery power, it is recommended that you turn on Bluetooth only when using it.

Tap the **Turn off** button to disable. When Bluetooth is turned off, the Bluetooth icon is grayed with a red X, and no incoming or outgoing connections are possible.

Setting Accessibility Properties

You can enter or change accessibility properties to define how your iPAQ Pocket PC interacts with other Bluetooth devices.

Entering a Device Name

The device name is what other devices see when they locate your device.

To enter a device name:

1. From the **Today** screen, tap the **Bluetooth** icon > **Bluetooth Settings** > **Accessibility** tab.
2. Highlight the name in the **Name** field and enter your new name.
3. Tap **OK** to save your changes.

Allowing Connections

You can determine if all devices or only paired devices can connect to your iPAQ Pocket PC.

Allowing All Devices to Connect

1. From the **Today** screen, tap the **Bluetooth** icon > **Bluetooth Settings** > **Accessibility** tab.
2. Select **Allow other devices to connect**, then **All devices**.
3. Tap **OK**.



CAUTION: This allows any device, even those unknown to you, to connect to your iPAQ Pocket PC. After they are connected, security settings for specific services apply as specified in the Bluetooth Settings.

Allowing Paired Devices to Connect

Paired devices share and exchange an internally generated Link Key before connecting. The Link Key is derived from a unique Bluetooth device address, a random number, and a user-defined password.

This feature allows only devices that you trust to connect to your iPAQ Pocket PC.

To allow paired devices to connect:

1. From the **Today** screen, tap the **Bluetooth** icon > **Bluetooth Settings** > **Accessibility** tab.
2. Select **Allow other devices to connect**, then **Paired devices only**.
3. Tap **OK**.

Allowing Others to Locate Your Device

You can allow other devices to search and locate your iPAQ Pocket PC.



If another remote device has your device's address, that device may be able to locate and connect to you even though you did not select for your device to be discovered.

To allow others to locate your device:

1. From the **Today** screen, tap the **Bluetooth** icon > **Bluetooth Settings** > **Accessibility** tab.
2. Select **Other devices can discover me**.
3. Tap **OK** to save the changes.

Enabling Bluetooth Services

You can select to enable certain services:

- Automatically when Bluetooth is activated
- When you permit the connection
- When a passkey or link key is correctly entered

You can use any of these security options when transferring files, creating a serial port connection, exchanging business card information, configuring dial-up networking, and joining a personal network.

Automatically Enabling Services

You can allow devices to connect without any authorization so that any time Bluetooth is on, it is ready for connections.

To automatically enable services:

1. From the **Today** screen, tap the **Bluetooth** icon > **Bluetooth Settings**.
2. Tap the tab for the service you want to enable: **File Transfer**, **Information Exchange**, **Serial Port**, **Personal Network Server**, or **Audio Gateway**.
3. Select **Enable service**.
4. Ensure there are no check marks in the **Authorization required** or **Authentication (Passkey) required** checkboxes.
5. Tap **OK**.

Requiring Authorization to Access Services

If you elect to require authorization to access services, you must authorize each connection. Then your iPAQ Pocket PC will always ask you if the connection should be permitted.

To require authorization to access services:

1. From the **Today** screen, tap the **Bluetooth** icon > **Bluetooth Settings**.
2. Tap the tab for the service you want to enable: **File Transfer, Information Exchange, Serial Port, Personal Network Server**, or **Audio Gateway**.
3. Select **Authorization required**.
4. Tap **OK**.

Secure Connections using a Passkey or Bond

To establish a secure connection with another device, you can use the passkey feature or an established bond. You can also add data encryption to this type of security.

A passkey is a code you enter to authenticate connections requested by other devices. The passkey must be known and used by both parties or the connection will not be allowed.

To require a passkey or bond:

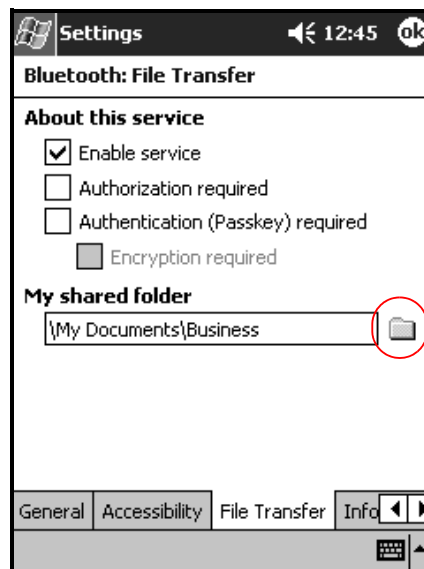
1. From the **Today** screen, tap the **Bluetooth** icon > **Bluetooth Settings**.
2. Tap the tab for the service you want to enable: **File Transfer, Information Exchange, Serial Port, Personal Network Server**, or **Audio Gateway**.
3. Select **Authentication (Passkey) required**.
4. Select **Encryption Required** if you want to require all data exchanged between the devices to be encrypted.
5. Tap **OK**.

Setting a Shared Folder

You can determine the folder that other devices access when they connect to your iPAQ Pocket PC.

To select a shared folder:

1. From the **Today** screen, tap the **Bluetooth** icon > **Bluetooth Settings**.
2. Tap the **File Transfer** tab.
3. Tap the **Folder** icon and locate a desired file folder.



4. Tap **OK**.

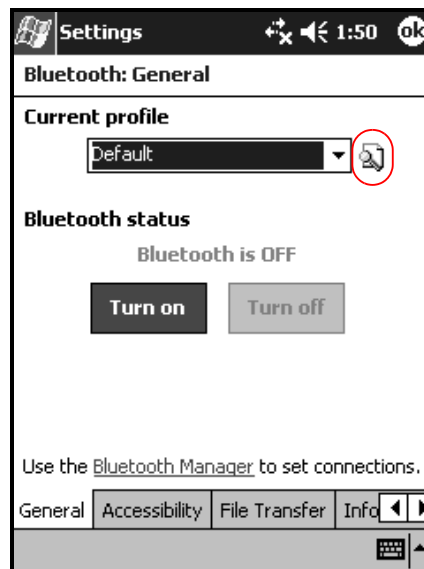
Understanding Profiles

Use profiles to quickly enable selected personal settings in multiple environments.

Creating a Profile

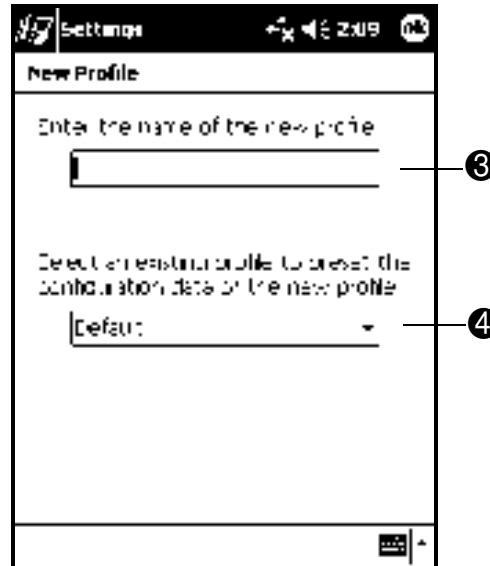
To create a profile:

1. From the **Today** screen, tap the **Bluetooth** icon > **Bluetooth Settings** > **General** tab > **Profile** icon.



2. Tap the **New** button.

3. Enter a descriptive name.
4. Select an existing profile to use as a template.



5. Tap **OK**.

Activating a Profile

When a new profile is created, you will need to activate it.

To activate a profile after creating it:

1. Create a profile.
2. From the **Today** screen, tap the **Bluetooth** icon > **Bluetooth Settings**.
3. From the **General** tab, select it from the **Current Profile** down arrow list.
4. Tap **OK**.

Saving Bluetooth Configuration Settings in a Profile

To save the iPAQ Pocket PC Bluetooth configuration settings to any profile:



Bluetooth must be turned **on** for changes to be saved.

1. From the **Today** screen, tap the **Bluetooth** icon > **Bluetooth Settings**.
2. From the **General** tab, tap the **Profile** icon.
3. Select a profile from the **Add/Delete Profiles** list or create a new one.
4. Tap **OK**.
5. Set up your iPAQ Pocket PC by specifying the desired connection, sharing, and security settings in the **General**, **Accessibility**, **File Transfer**, **Information Exchange**, **Serial Port**, **Personal Network Server**, and/or **Audio Gateway** tabs under **Bluetooth Settings**.
6. Tap **OK** to close the **Bluetooth Settings**. The changes are automatically saved.

Renaming a Profile

1. From the **Today** screen, tap the **Bluetooth** icon > **Bluetooth Settings**.
2. From the **General** tab, tap the **Profile** icon.
3. Select a profile from the **Add/Delete Profiles** list.
4. Tap the **Rename** button.
5. Enter a new descriptive name.
6. Tap **Enter**.
7. Tap **OK**.

Deleting a Profile

1. From the **Today** screen, tap the **Bluetooth** icon > **Bluetooth Settings**.
2. From the **General** tab, tap the **Profile** icon.
3. Select a profile from the **Add/Delete Profiles** list.
4. Tap the **Delete** button.
5. Tap **Yes** to confirm you want to delete the profile.
6. Tap **OK**.



An active profile cannot be deleted.

Working with Bluetooth Manager

Use Bluetooth Manager to:

- Establish connections
- Display shortcuts
- Exchange business cards
- Control the on-screen display

Opening Bluetooth Manager

From the **Today** screen, tap **Start > Bluetooth Manager**.

The first screen that displays is **My Shortcuts**.



Bluetooth Manager can also be accessed from the **Today** screen by tapping the **Bluetooth** icon > **Bluetooth Manager**.



Opening Bluetooth Manager automatically turns on Bluetooth.

Locating and Selecting a Device


Several tasks require you to locate a device and connect to it. When you are required to locate a device, the Bluetooth browser assists by searching for your desired function that supports other Bluetooth devices.

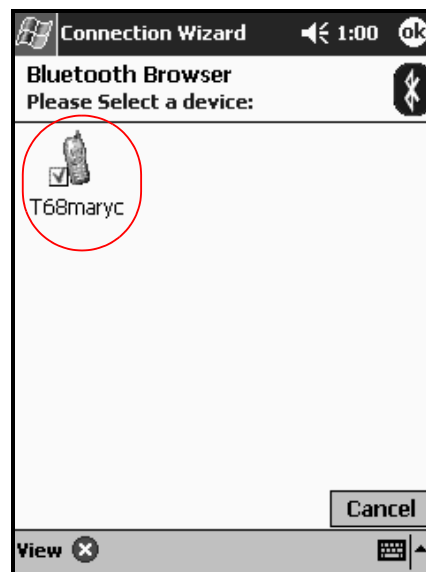
Pairing Devices

You can pair devices so they must exchange a computer generated security key prior to each connection. The security key is also called a “passkey.” It is generated from a unique Bluetooth device address, a random number, and a user-defined password.

After two devices are paired, they have a trusted relationship with each other that can be verified using a link key. No additional input is needed from the user. Therefore, connections and activities can be performed between the paired devices without constant authorization from the user.

To pair devices:

1. From the **Today** screen, tap **Start > Bluetooth Manager**.
2. Tap **Tools > Paired devices**.
3. Tap **Add**.
4. Tap the **Lookup**  icon.
5. Tap a device.



6. Enter a password in the **Passkey** field.
7. Tap **OK**.
8. Enter the same passkey into the other device.



Some devices, such as mobile phones, need to be placed in discoverable mode to accept a bond from another device. Refer to that device's user instructions for more information.

Unpairing Devices

You can remove a paired relationship between devices.

1. From the **Today** screen, tap **Start > Bluetooth Manager**.
2. Tap **Tools**, then **Paired devices**.
3. Tap a device name.
4. Tap **Remove**.
5. Tap **Yes** to remove the pairing.

Connecting to Other Devices

Use ActiveSync, serial and dial-up connections to communicate with other Bluetooth devices. Establish a partnership with a cell phone and set up the Bluetooth services it offers.

Identifying the Communications Port

You can identify the virtual COM ports used to create a **serial port** connection. You may need to identify these COM ports for activities such as printing.

Use the inbound COM port when other devices initiate a serial connection. Use the outbound COM port when you initiate a serial connection to another device.

To identify the communications port:

1. From the **Today** screen, tap the **Bluetooth** icon > **Bluetooth Settings**.
2. Tab over to the **Serial Port** tab and tap it.
3. Note the names of your inbound and outbound COM ports.
4. Tap **OK**.

Establishing an ActiveSync Connection

You can set up an ActiveSync partnership with a Bluetooth-enabled computer.

To establish an ActiveSync connection:

1. From the **Today** screen, tap **Start > Bluetooth Manager**.
2. Tap **New**, then **Connect**.
3. Tap **ActiveSync via Bluetooth > Next**.



4. Follow the connection wizard instructions.

Establishing a Serial Connection

Use the wireless Bluetooth serial port connection just as you would a physical serial cable connection. You must configure the application that will use the connection to the correct serial port.

To establish a serial connection:

1. From the **Today** screen, tap **Start > Bluetooth Manager**.
2. Tap **New > Connect**.
3. Tap **Explore a Bluetooth device > Next**.
4. Follow the connection wizard instructions.

Dial-Up Networking

When you use dial-up networking (DUN), the remote device providing the dial-up networking service and the remote computer to which you are connecting must both have telephone access.

Devices that can provide dial-up networking include Bluetooth:

- Mobile phones
- Desktop computers
- Modems

Using Dial-Up Networking

To connect to a device that provides modem access:

1. From the **Today** screen, tap **Start > Bluetooth Manager**.
2. Tap **New > Connect**.
3. Tap **Connect to the Internet > Next**.
4. Follow the connection wizard instructions.



After you create the dial-up networking shortcut with a device, tap and hold the shortcut icon in the **My Shortcuts** tab of the **Bluetooth Manager**, then tap **Connect**.

5. Tap **New Connection**.
 6. Tap **OK**.
 7. Enter a name in the **Connection Name** field.
 8. Enter a phone number. You must sometimes enter the country code and area code, depending on where you are calling.
 9. Tap **OK** to begin dialing.
-



Some mobile phones require a bond between devices (see the section “Pairing Devices”).

To connect to the Internet and use Pocket Internet Explorer, you must first connect to a Bluetooth phone from Bluetooth Manager. To make this connection the default dial-up connection for Pocket Internet Explorer:

1. From the **Today** screen, tap **Start > Settings > Connections** tab.
 2. Tap the **Connections** icon > **Advanced** tab.
 3. Tap **Select Networks**.
 4. Enable **Bluetooth Settings** from the dropdown list.
-



The Bluetooth modem connection you created can only be viewed only from the Bluetooth Settings on the Connections Task page.

Join a Personal Area Network

Connect two or more Bluetooth devices to share files, collaborate or play multiplayer games.

To establish a Personal Area Network connection:

1. From the **Today** screen, tap **Start > Bluetooth Manager**.
2. Tap **New > Connect**.
3. Tap **Join a personal network > Next**.
4. Follow the connection wizard instructions.

Establishing a Cell Phone Partnership

You can establish a partnership with a cell phone, then set up the Bluetooth services it offers.

To establish a cell phone partnership:

1. From the **Today** screen, tap **Start > Bluetooth Manager**.
2. Tap **New > Connect**.
3. Tap **Partner with a cell phone > Next**.
4. Follow the connection wizard instructions.

Establishing a Headset Connection

You can redirect your iPAQ Pocket PC's audio to a headset or use a headset's microphone with your Pocket PC.

To establish a headset connection:

1. From the **Today** screen, tap **Start > Bluetooth Manager**.
2. Tap **New > Connect**.
3. Tap **Connect a headset > Next**.
4. Follow the connection wizard instructions.

Working with Files

You can exchange information with a connected device and use the Bluetooth File Explorer to:

- Navigate through the directories.
- View files and folders.
- Create new folders.
- Send and receive files from a remote device.
- Delete and rename files on a remote device.

Creating a File Transfer Connection

1. From the **Today** screen, tap **Start > Bluetooth Manager**.
2. Tap **New > Connect**.
3. Tap **Browse files on a remote device > Next**.
4. Follow the connection wizard instructions.

Sending Files

1. Tap and hold a file transfer shortcut icon, then tap **Connect**.
2. Tap **File > Send a File... .**
3. Locate a file to send.
4. Tap the file to send it.
5. Tap **OK**.

Creating a Folder on a Remote Device

1. Tap and hold a file transfer shortcut icon, then tap **Connect**.
2. Navigate to the location you want for the new folder.
3. Tap **File > Create a folder**.
4. Enter a folder name while **New Folder** is selected, then tap **Enter**.
5. Tap **OK**.

Receiving a File from a Remote Device

1. Tap and hold a file transfer shortcut icon, then tap **Connect**.
2. Navigate to the file location on the remote device.
3. Tap the file.
4. Tap **File > Get**.
5. Tap **OK**.

Deleting a File from a Remote Device

1. Tap and hold a file transfer shortcut icon, then tap **Connect**.
2. Navigate to the file location on the remote device.
3. Tap the file.
4. Tap **File > Delete**.
5. Tap **Yes** to verify you want to delete the selected file.
6. Tap **OK**.

Using Business Card Exchange

Using the business card exchange, you can:

- Set up your own business card.
- Send a business card to one or more devices.
- Request a business card from one or more devices.
- Exchange business cards with one or more devices.

You must establish a default contact name to send or exchange business card information.

You must first specify your default business card on the **Information Exchange** tab in **Bluetooth Settings**. This name becomes the default for business card transfers.

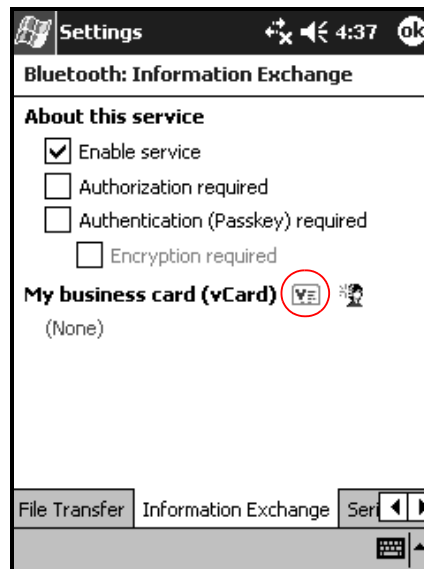
Setting Up Your Business Card Information

Two Bluetooth devices can exchange business card information electronically. You can determine the information about you that is sent to another device upon request. This information comes from the Contacts list in Pocket Outlook. The default selection is “None.”

To set up your business card information:

1. Create a contact in the **Contacts** application that includes your name, title, and other relevant information.
2. From the **Today** screen, tap the **Bluetooth** icon > **Bluetooth Settings**.
3. Tap the **Information Exchange** tab.

4. Tap the **My business card (vCard)** icon.

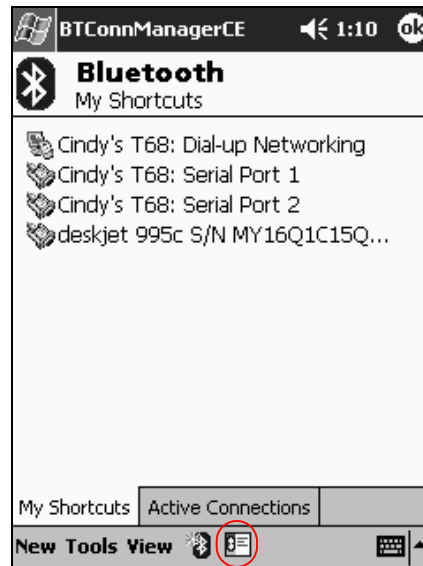


5. Choose your contact from the list.
6. Tap **OK**.

SHORTCUT: Tap the New Contact icon to enter a new contact.

Sending Business Cards

1. From the **Today** screen, tap **Start > Bluetooth Manager**.
2. Tap the **Business card** icon.



You can also open the business card exchange by tapping **Tools, Business Card Exchange** in the **Bluetooth Manager**.

3. Tap the **Send** icon.
4. Tap the device where you want to send your business card.
5. Tap **OK**.

Requesting Business Cards

1. From the **Today** screen, tap **Start > Bluetooth Manager**.
2. Tap the **Business card** icon.
3. Tap the **Request** icon.
4. Tap the device from which you want to request a business card.
5. Tap **OK**.

Exchanging Business Cards

You can exchange business card information with another device. If available, the device's information will be sent directly into your **Contacts** list in **Pocket Outlook**.

To exchange business cards:

1. From the **Today** screen, tap **Start > Bluetooth Manager**.
2. Tap the **Business card** icon.
3. Tap the **Exchange** icon.
4. Tap the device with which you want to exchange your business card.
5. Tap **OK**.

Opening a Connection

1. From the **Today** screen, tap **Start > Bluetooth Manager**.
2. Tap and hold the icon or list name, then tap **Connect**.
3. Tap **OK**.

Viewing Connection Status

You can view:

- Connection's name
- Device's name
- Connection status
- Length of connection
- Signal strength

To view the connection status:

1. From the **Today** screen, tap **Start > Bluetooth Manager**.
2. Tap and hold an active connection icon or list name, then tap **Status**.
3. Tap **OK**.

Closing a Connection

1. From the **Today** screen, tap **Start > Bluetooth Manager**.
2. Tap and hold the connection icon or list name.
3. Tap **Disconnect** from the menu.
4. Tap **OK**.

Viewing Connection Information

1. From the **Today** screen, tap **Start > Bluetooth Manager**.
2. Tap and hold the connection icon or list name.
3. Tap **Properties** from the menu.
4. Tap **OK**.

Working with Connections

You can create shortcuts to open and view status information for all connections.

Creating a Shortcut

Creating a shortcut to one or more services does not establish a connection. It only places a shortcut to that service on the **Shortcut** tab of the **Bluetooth Manager**.

To create a shortcut:

1. From the **Today** screen, tap **Start > Bluetooth Manager**.
2. Tap **New**, then **Connect**.
3. Select a type of service, then tap **Next**.
4. Follow the connection wizard instructions.



Paired devices are designated by a checkmark.

Deleting a Shortcut

1. From the **Today** screen, tap **Start > Bluetooth Manager**.
2. Tap and hold the connection icon or list name to be deleted.
3. Tap **Delete** from the menu.
4. Tap **Yes** to verify the selected shortcut should be deleted.
5. Tap **OK**.

Viewing Shortcuts

You can view shortcuts as icons or in a list format.

1. From the **Today** screen, tap **Start > Bluetooth Manager**.
2. Tap **View**.
3. Tap **List** or **Icon**.
4. Tap **OK**.

Using the Wireless LAN (h5500 only)

Getting Acquainted

Your iPAQ Pocket PC can connect to an 802.11b Wireless LAN (WLAN) or connect directly to other WLAN-enabled devices. With WLAN, you can:

- Access the Internet
- Send and receive e-mail
- Access corporate network information
- Use virtual private networks (VPN) for secure remote access
- Use hot spots for wireless connectivity



Use of dial-up and wireless Internet, e-mail, corporate networks, and other wireless communications, such as Bluetooth-enabled devices, may require separately purchased additional hardware and other compatible equipment, in addition to a standard Wireless LAN (WLAN) infrastructure and a separately purchased service contract. Check with your service provider for availability and coverage in your area. Not all web content may be available. Some web content may require installation of additional software.

Learning the Terms

It is recommended that you become familiar with the following terms as you begin to use WLAN technology.

Term	Definition
Wireless Access Point	The access point provides a wireless connection to a network (additional hardware).
Infrastructure	This connection mode uses wireless access points to connect to networks.
Device-to-computer or ad-hoc	This mode does not use access points. It is used in peer-to-peer network communications. All peers must be configured on the same channel.
Hot spots	Public or private areas where there is a wireless access point available.
SSID or Network Name	SSID is the acronym for the service set identifier. This identification number uses a maximum number of 32 characters and is case sensitive.
Encryption (WEP) or IEEE 802.1X	A set of security services used to protect 802.11 networks from unauthorized access.

Getting Started with the Wireless LAN

Powering the WLAN On or Off

To use WLAN on your iPAQ Pocket PC, you need to turn on WLAN and set up your device.

To turn the WLAN on or off:

1. From the **Today** screen, tap **Start > iPAQ Wireless**.
2. Tap the **WLAN** icon.

If the WLAN is powered on, the **WLAN** icon will turn from orange to green and the Wireless LAN indicator will flash green to indicate WLAN is on and connected or flash amber to indicate WLAN is on and not connected.

If the WLAN is powered off, the **WLAN** icon will turn from green to orange.

Automatically Connecting to a Network


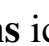
1. If one or more networks are present, the **Network Indicator** icon will appear in the Navigation bar. Tap the network you want to connect to, then tap whether the network connects to the Internet or Work.



2. If you are prompted for a Network Key (WEP), enter it and tap **Connect**. If you are not sure, contact your network administrator.

Manually Entering New Network Settings

A wireless network can be added either when the network is detected (the **Network Indicator** icon is showing in the Navigation bar) or manually by entering setting information. To manually add a wireless network:

1. Be sure the WLAN is powered on.
2. Tap the **Connections** icon ( or ) > **Settings** > **Advanced** tab > **Network Card** button > **Wireless** tab > **Add New Settings**.

3. Tap the **General** tab and enter a network name (SSID).



If a network was detected in step 2, the SSID is automatically entered and cannot be changed.

4. In the **Connects to:** box, select where your network connects to (**The Internet** or **Work**).
5. If you want to connect to an ad-hoc connection, tap the **This is a device-to-computer (ad-hoc) connection** checkbox.
6. If authentication information is needed, from the **Configure Wireless Network** screen, tap the **Authentication** tab.



To determine whether authentication information is needed, see your network administrator.

7. Select the type of network authentication to use:
 - a. To use data encryption, tap the **Data encryption (WEP enabled)** checkbox.
 - b. To use Shared Key authentication, tap the **Network Authentication (Shared mode)** checkbox. Type the network key in the **Network Key:** box.

- c. If a network key is provided by your network automatically, tap the **The Key is provided for me automatically** checkbox.
- d. For increased security, tap the **Enable network access using IEEE 802.1X** checkbox. You should only check this option if it is supported by your network environment. Ask your network administrator if you are unsure.

Searching for Networks to Access

Networks that you have already configured are preferred networks and are listed in **Wireless Networks**. You can choose whether to connect only to preferred networks or to have your iPAQ Pocket PC search for and connect to any available network (preferred or not).

1. Tap the **Connections** icon > **Settings** > **Advanced** tab > **Network Card** button > **Wireless** tab.
2. In the **Networks to access** box, tap the type of network you want to connect to (**All Available**, **Only access points**, or **Only computer-to-computer**).
3. To connect only to networks that have already been configured, clear the **Automatically connect to non-preferred networks** checkbox.



If you check the **Automatically connect to non-preferred networks** checkbox, your iPAQ Pocket PC will detect any new networks and provide you the opportunity to configure them.

Managing Wireless Network Settings

Viewing or Editing a Wireless Network

To view or edit an existing or available wireless network:

1. Be sure the WLAN is powered on.
2. Tap the **Connections** icon > **Settings** > **Advanced** tab > **Network Card** button > **Wireless** tab.
3. In the **Wireless networks** box, tap the desired network name.
4. Edit the existing settings as necessary, then tap **OK** to save the changes.

Deleting a Wireless Network

To delete an existing or available wireless network:

1. Be sure the WLAN is powered on.
2. Tap the **Connections** icon > **Settings** > **Advanced** tab > **Network Card** button > **Wireless** tab.
3. In the **Wireless networks** box, tap and hold the network you want to delete.
4. Tap **Remove Settings**.

Monitoring Signal Strength and Status

To view the signal strength between your iPAQ Pocket PC and access point WLAN connection:

1. Tap the **Connections** icon in the Navigation bar.
2. When the **Connectivity** box displays, you will be able to view the type of network the iPAQ Pocket PC is connected to (for example, Work or Internet) and an icon displaying the signal strength.



3. To make changes to the connection settings, tap **Settings**.
4. To exit the **Connectivity** box, tap the **Hide** button.

Working with Network Settings

Looking Up an IP Address

To find the IP address the wireless network is using:

1. Be sure the WLAN is powered on.
2. Connect to the appropriate network.
3. Tap the **Connections** icon > **Settings** > **Advanced** tab > **Network Card** button > **Network Adapters** tab.
4. Tap the **IP Address** tab. The IP address appears in the **IP Address** box.



Changing TCP/IP Settings



Most Internet Service Providers (ISPs) and private networks now use dynamically-assigned IP addresses. You will not need to change TCP/IP settings unless your ISP or private network does not use dynamically-assigned IP addresses. If you are not sure, check with your network administrator.

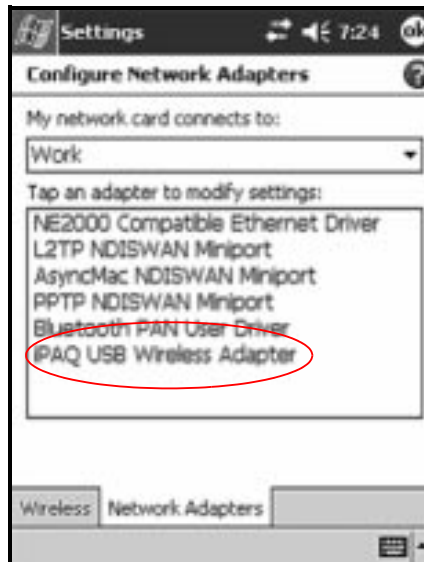
To change TCP/IP Settings:

1. Contact your ISP or network administrator to determine your IP address, subnet mask, and/or default gateway (if needed).
 2. Be sure the WLAN is powered on.
 3. Tap the **Connections** icon > **Settings** > **Advanced** tab > **Network Card** button > **Network Adapters** tab.
 4. In the **My network card connects to...** dropdown box, tap either **The Internet** or **Work**.
-



If you are connecting to your ISP at home, tap **The Internet**. If you are connecting to a private network such as a corporate network at work, you should tap **Work**.

5. In the **Tap an adapter to modify settings** box, tap **iPAQ USB Wireless Adapter**.



6. Tap the **IP Address** tab.
7. Tap **Use specific IP address** and enter the requested information.



8. Tap **OK** to save your settings.

Changing DNS and WINS Settings



Most Internet Service Providers (ISPs) and private networks now use dynamically-assigned IP addresses. You will not need to change DNS and WINS settings unless your ISP or private network does not use dynamically-assigned IP addresses. If you are not sure, check with your network administrator.

Servers that require an assigned IP address may also require a way to map computer names to IP addresses. Your iPAQ Pocket PC supports two name resolution options:

- DNS
- WINS

To change server settings:

1. Contact your ISP or network administrator to determine which name resolution to use, obtain the specific server address, and determine whether alternate addresses are available.



An alternate address may enable you to connect when the primary server is unavailable.

2. Be sure the WLAN is powered on.
3. Tap the **Connections** icon > **Settings** > **Advanced** tab > **Network Card** button > **Network Adapters** tab.
4. In the **My network card connects to...** dropdown box, tap either **The Internet** or **Work**.



If you are connecting to your ISP at home, tap **The Internet**. If you are connecting to a private network such as a corporate network at work, you should tap **Work**.

5. In the **Tap an adapter to modify settings** box, tap **iPAQ USB Wireless Adapter**.
6. Tap the **Name Servers** tab and enter the requested information.



7. Tap **OK** to save your settings.

Setting Up VPN Server Connections

A VPN connection enables you to securely connect to servers, such as a corporate network, via the Internet. To set up a VPN server connection:

1. Contact your network administrator for your user name, password, domain name, TCP/IP settings, and host name or IP address of the VPN server.
2. Be sure the WLAN is powered on.
3. From the **Today** screen, tap **Start > Settings > Connections** tab > **Connections > Tasks** tab.
4. Under **My Work Network**, tap **Add a new VPN server connection**.



5. Follow the instructions in the **New Connection** wizard.



For online Help for any screen in the **New Connection** wizard or while changing settings, tap the **?**.

Changing VPN Server Connections

1. Be sure the WLAN is powered on.
2. From the **Today** screen, tap **Start > Settings > Connections** tab > **Connections > Tasks** tab.
3. Under **My Work Network**, tap **Manage existing connections > VPN** tab.
4. Tap the VPN connection you want to change, then tap **Settings**.
5. In the **Name** box, enter a name for the connection (for example, your company's name).
6. In the **Host name/IP** box, enter the VPN server name or IP address.
7. Next to **VPN type**, tap the type of authentication to use with your device (**IPSec/L2TP** or **PPTP**). If you aren't sure which option to choose, ask your network administrator.
8. Tap **Next**.
9. If you selected **IPSec/L2TP** on the previous screen, tap the type of authentication. If you select **A pre-shared key**, enter the key provided by your network administrator, then tap **Next**.



If you selected **PPTP** in the previous screen, this step is skipped.

10. Enter the user name, password, and domain name provided by your network administrator.



If a domain name was not provided, you may be able to connect without entering one.

11. To change advanced settings, tap the **Advanced** button.



You will not need to change advanced settings unless:

- The server to which you are connecting does not use dynamically-assigned IP addresses and you need to enter your TCP/IP settings,
or
 - You need to change server DNS or WINS settings.
-

12. Tap the **Finish** button.

Starting VPN Server Connections

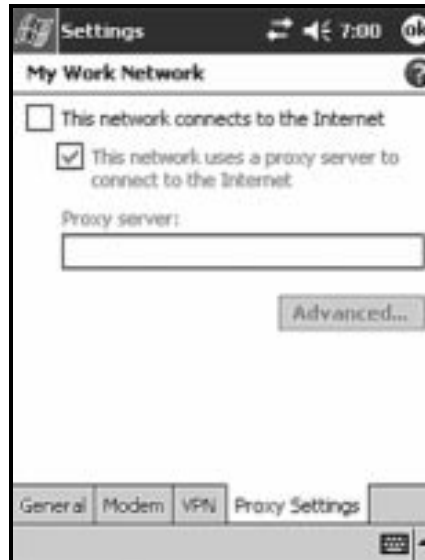
To start a connection through a VPN server, be sure the WLAN is powered on, then select the VPN network. Your iPAQ Pocket PC will automatically begin connecting.

Setting Up Proxy Server Settings

If you are connected to your ISP or private network during synchronization, your iPAQ Pocket PC should download proper proxy settings from your personal computer. If these settings are not on your personal computer or need to be changed, you will need to set them up manually. To set up proxy server settings:

1. Contact your ISP or network administrator for the proxy server name, server type, port, type of Socks protocol used, and your user name and password.
2. Be sure the WLAN is powered on.
3. From the **Today** screen, tap **Start > Settings > Connections** tab > **Connections > Tasks** tab.
4. Under **My Work Network**, tap **Edit my proxy server > Proxy Settings** tab.


5. Tap the **This network connects to the Internet** and **This network uses a proxy server to connect to the Internet** checkboxes.
6. In the **Proxy server** box, enter the proxy server name.



7. If you need to change port number or proxy server type settings, tap the **Advanced** button and change the desired settings.
8. Tap **OK**.

Using the Fingerprint Reader (h5500 only)

You can increase the security of the data stored in your iPAQ Pocket PC by using the iPAQ Fingerprint Reader. This feature allows you to require a PIN, password, and/or fingerprint be entered before you can log on to your iPAQ Pocket PC.

 **CAUTION:** In the event that an incorrect or unsuccessful PIN, password, and/or fingerprint is repeatedly or incorrectly entered, all data and applications stored in RAM are erased and the iPAQ Pocket PC is returned to the as-shipped configuration. It is recommended that you back up all data frequently when using the security features.

It is recommended that you complete the fingerprint reader training on your iPAQ Pocket PC prior to changing your security settings.

Learning to Enroll a Fingerprint

Fingerprint Reader enrollment training is available on the iPAQ Pocket PC to assist you in proper enrollment of your unique fingerprint. You can access the training in two ways:

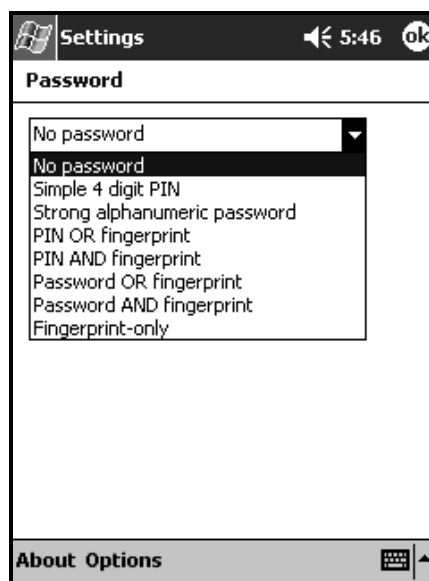
- First time you open a **Fingerprint** screen
- Tap the **Training** button from one of the logon setup fingerprint screens

To learn to enroll fingerprints:



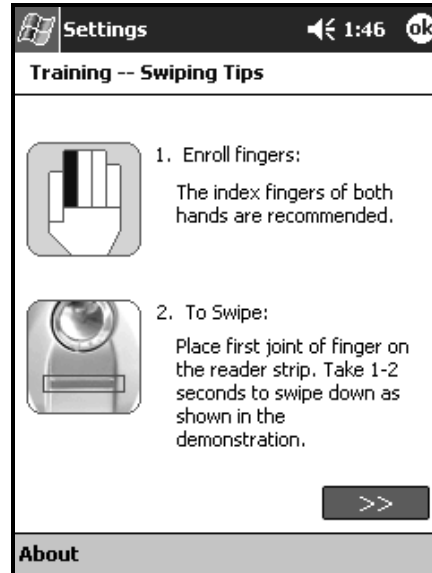
You can tap **OK** at the top of the screen at anytime to exit the training.

1. From the **Today** screen, tap **Start** > **Settings** > **Password**.
2. Select **PIN OR fingerprint** from the down arrow list to access training.



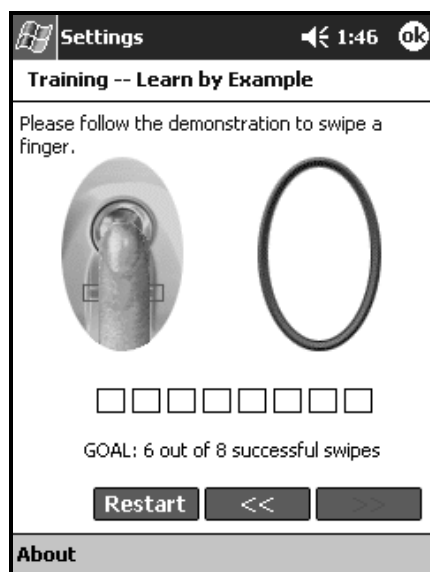
3. Tap 4 digits in the **PIN** field.


4. Tap **OK** or **ENTR**.
5. Tap the **Training** button to begin Fingerprint Reader training.



6. Read the swiping tips.
7. Tap the **double arrows** button.

8. Follow the on-screen demonstration to swipe a finger.




 If the finger swipe is acceptable, the oval frame turns green and the message “Good. Please continue!” displays. If the finger swipe is unacceptable, the oval frame turns red and the message “Poor quality” or “No image. Try again!” displays.

9. Repeat the finger swiping exercise as prompted until you have completed six out of eight successful swipes.

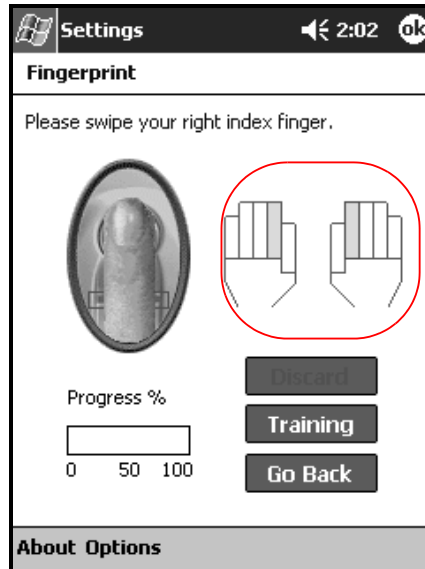
 You must perform six acceptable swipes to continue the training.

10. Tap the **double arrows** button to continue the Self-test.

11. Perform eight finger swipes in the Self-test.

 You must perform seven acceptable swipes to complete the training.

12. Tap **Finish** to end the training.
13. Tap **OK** to exit or tap a finger to enroll.



Working with Fingerprints

iPAQ Fingerprint Reader suggests fingers for you to use during the swiping activity. You can select a different finger at any time.

It is recommended that you enroll at least two fingers (index fingers are suggested). To enroll a fingerprint, you must take between two and eight quality finger swipes.

Enrolling a Fingerprint

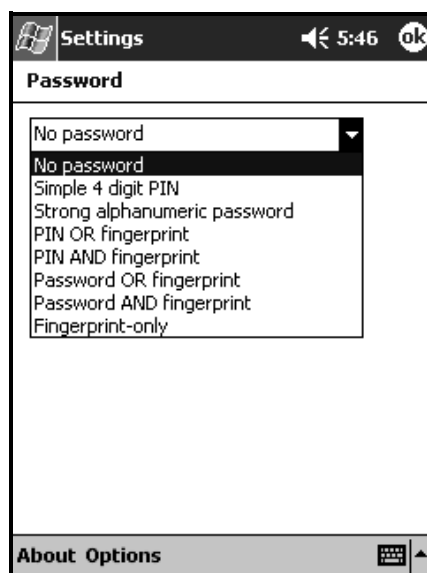
The **Fingerprint** screen uses color coding to display the status of your fingerprint swipe.

Fingerprint Status

If the color around the oval is...	Then...
Blue	No fingerprint has been taken for the finger.
Green	The fingerprint swipe was good quality.
Red	The fingerprint swipe was poor quality.

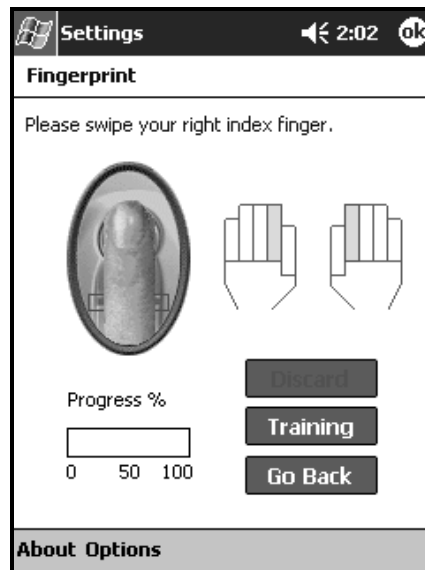
To enroll a fingerprint:

1. From the **Today** screen, tap **Start > Settings > Password**.
2. Select the option from the down arrow list that you choose for your security setting.



3. Enter either your PIN or password, when prompted.
4. On the **Fingerprint** screen, tap the finger on the display you want to enroll.

5. Swipe the selected finger, as instructed.



It is recommended that you gently swipe your finger downward across the sensor. You should begin the swipe at the first joint of your finger and continue downward with a smooth slow motion.

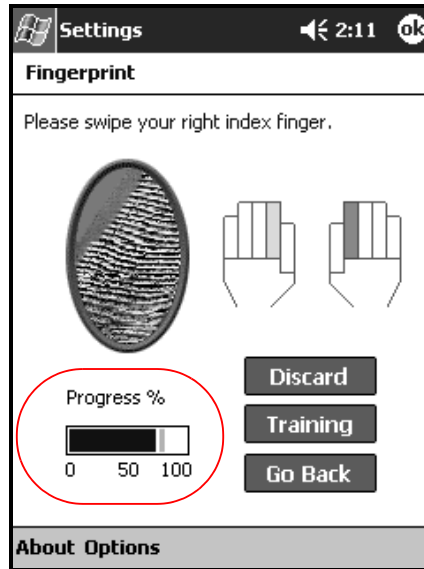
If you need additional assistance at any time, tap the **Training** button.

6. Monitor the status to see if your fingerprint was correctly swiped.



If OK, the perimeter of the oval turns green and a message displays indicating the quality was good. If poor quality, the perimeter of the oval turns red and a message displays.

7. Repeat steps 5 and 6 to acquire a sufficient number of quality swipes (notice the progress bar) to enroll the print.

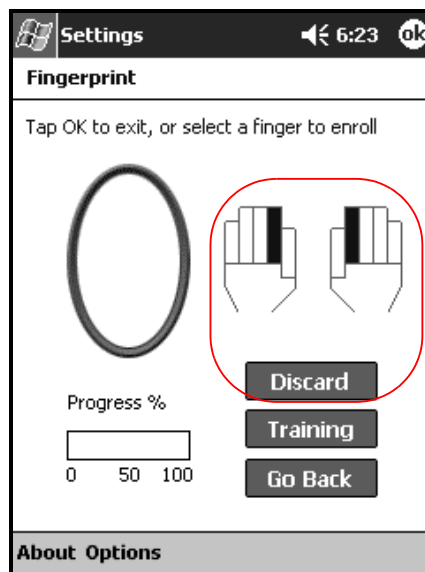


8. Tap **OK**.
9. Tap **Yes**.

Deleting a Fingerprint

You can delete any saved fingerprints.

1. From the **Today** screen, tap **Start > Settings > Password**.
2. Enter your PIN or swipe one of the enrolled fingers.
3. Tap the finger you want to delete, then tap **Discard**.

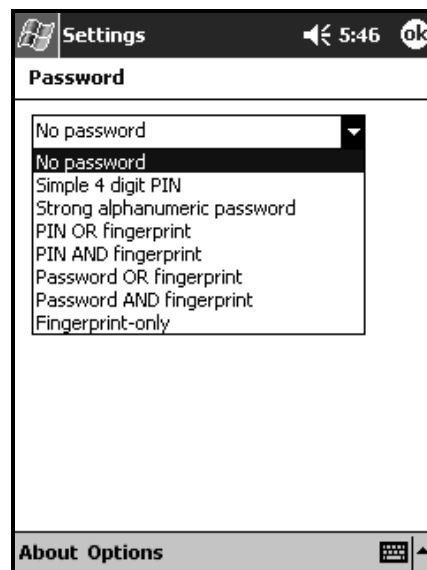


4. Tap **Yes** to confirm the deletion.

Setting Logon Passwords

You have a variety of options for setting logon passwords. You can select:

- No password (default)
- 4-digit PIN
- Alphanumeric password
- PIN or fingerprint
- PIN and fingerprint
- Alphanumeric password or fingerprint
- Alphanumeric password and fingerprint
- Fingerprint only



If you are using ActiveSync, you must enter a password on your personal computer to begin synchronization.

Setting “No password” for Logon

In this mode, you are not required to enter a PIN, password, or fingerprint to logon.

1. From the **Today** screen, tap **Start > Settings > Password**.
2. Select “No password” from the down arrow list.
3. Tap **OK**.
4. Tap **Yes** to save the changes.



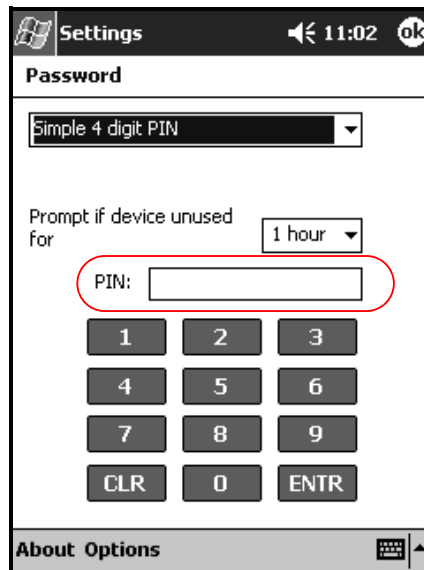
CAUTION: In the event that an incorrect or unsuccessful PIN, password, and/or fingerprint is repeatedly or incorrectly entered, all data and applications stored in RAM are erased and the iPAQ Pocket PC is returned to the as-shipped configuration. It is recommended that you back up all data frequently when using the security features.

Setting “Simple 4 digit PIN” for Logon

In this mode, you are required to enter a 4-digit PIN to logon.

1. From the **Today** screen, tap **Start > Settings > Password**.
2. Select “Simple 4 digit PIN” from the down arrow list.
3. Select from the down arrow list the length of time the iPAQ Pocket PC can remain unused before you must reenter the PIN.

4. Tap 4 digits in the **PIN** field.



5. Tap **OK** or **ENTR**.
6. Tap **Yes** to save the changes.

Setting “Strong alphanumeric password” for Logon

In this mode, you are required to enter a strong password with at least seven characters to logon. This password must contain a combination of upper and lowercase letters, numerals, or punctuation.

1. From the **Today** screen, tap **Start > Settings > Password**.
2. Select “Strong alphanumeric password” from the down arrow list.
3. Select from the down arrow list the length of time the iPAQ Pocket PC can remain unused before you must reenter the password.

4. Enter seven alphanumeric characters in the **Password** field.
-



Your password must have at least seven characters and contain both upper and lower case letters and numbers. You can use punctuation marks.

5. Repeat step 4 in the **Confirm** field.
6. Tap **OK**.
7. Tap **Yes** to save.

Setting “PIN OR fingerprint” for Logon

In this mode, you are required to enter a 4-digit PIN or fingerprint to logon.

1. From the **Today** screen, tap **Start > Settings > Password**.
 2. Select “PIN OR fingerprint” from the down arrow list.
 3. Tap 4 digits in the **PIN** field.
 4. Select from the down arrow list the length of time the iPAQ Pocket PC can remain unused before you must reenter the PIN.
 5. Tap **OK** or **ENTR**.
 6. Tap a finger to enroll.
 7. Swipe the selected finger, as instructed.
-



For more information on finger swiping, see the section “Enrolling a Fingerprint” or tap the **Training** button.

8. Tap **OK**.
9. Tap **Yes** to save changes.

Setting “PIN AND fingerprint” for Logon

In this mode, you are required to enter both a PIN and a fingerprint to logon.

1. From the **Today** screen, tap **Start > Settings > Password**.
2. Select “PIN AND fingerprint” from down arrow list.
3. Select from the down arrow list the length of time the iPAQ Pocket PC can remain unused before you must reenter the PIN.
4. Tap 4 digits in the **PIN** field.
5. Tap **OK** or **ENTR**.
6. Tap a finger to enroll.
7. Swipe the selected finger, as instructed.



For more information on finger swiping, see the section “Enrolling a Fingerprint” or tap the **Training** button.

8. Tap **OK**.
9. Tap **Yes** to save changes.

Setting “Password OR fingerprint” for Logon

In this mode, you are required to enter an alphanumeric password with at least seven characters or a fingerprint to logon.



The alphanumeric password must contain a combination of upper and lower case letters, numbers, and punctuation.

1. From the **Today** screen, tap **Start > Settings > Password**.
2. Select “Password OR fingerprint” from the down arrow list.

3. Select from the down arrow list the length of time the iPAQ Pocket PC can remain unused before you must reenter the password.
4. Enter seven alphanumeric characters in the **Password** field.
5. Repeat step 4 in the **Confirm** field.
6. Tap **OK**.
7. Tap a finger to enroll.
8. Swipe the selected finger, as instructed.



For more information on finger swiping, see the section “Enrolling a Fingerprint” or tap the **Training** button.

9. Tap **OK**.
10. Tap **Yes** to save changes.

Setting “Password AND Fingerprint” for Logon


In this mode, you are required to enter both a password with at least seven characters and a fingerprint to logon.



The alphanumeric password must contain a combination of upper and lower case letters, numbers, and punctuation.

1. From the **Today** screen, tap **Start > Settings > Password**.
2. Select “Password AND fingerprint” from down arrow list.
3. Select from the down arrow list the length of time the iPAQ Pocket PC can remain unused before you must reenter the password.
4. Enter seven alphanumeric characters in the **Password** field.
5. Repeat step 4 in the **Confirm** field.


6. Tap **OK**.
 7. Tap a finger to enroll.
 8. Swipe the selected finger, as instructed.
-

 For more information on finger swiping, see the section “Enrolling a Fingerprint” or tap the **Training** button.


9. Tap **OK**.
10. Tap **Yes** to save changes.

Setting “Fingerprint-only” for Logon


In this mode, you are required to enter a successful fingerprint to logon.

 **CAUTION:** In the event that an incorrect or unsuccessful fingerprint is repeatedly or incorrectly entered, all data and applications stored in RAM are erased and the iPAQ Pocket PC is returned to the as-shipped configuration. It is recommended that you back up all data frequently when using the security features.

1. From the **Today** screen, tap **Start > Settings > Password**.
 2. Select “fingerprint-only” from the down arrow list.
-

 If you are using ActiveSync, you must enter a password on your personal computer to begin synchronization.

3. Tap the finger to enroll.
 4. Swipe the selected finger as instructed.
-

 For more information on finger swiping, see the section “Enrolling a Fingerprint” or tap the **Training** button.

5. Tap **OK**.
6. Tap **Yes** to save changes.

Logging On Using PIN, Passwords, and Fingerprints

If you have set up a PIN, password, and/or fingerprint for logon, you must enter the correct PIN, password, and/or successfully swipe the correct fingerprint to use your iPAQ Pocket PC.

When you power on your iPAQ Pocket PC, you will be required to enter your logon information on the **PIN, Password** and/or **Fingerprint** screen.



CAUTION: In the event that an incorrect or unsuccessful PIN, password, and/or fingerprint is repeatedly or incorrectly entered, all data and applications stored in RAM are erased and the iPAQ Pocket PC is returned to the as-shipped configuration. It is recommended that you back up all data frequently when using the security features. The default number of attempts is six. You can select the maximum number of attempts.

Logging On with No Password

You do not need to enter a password or fingerprint to use the iPAQ Pocket PC.

Logging On Using a 4-digit PIN

You must enter the 4-digit PIN you entered during setup.

1. Turn on your iPAQ Pocket PC.
2. Tap your 4-digit PIN.
3. Tap **OK** or **ENTR**.

Logging On Using a Password

You must enter the alphanumeric password you entered during setup.

1. Turn on your iPAQ Pocket PC.
2. Enter your password.
3. Tap **OK** or **ENTR**.

Logging On Using a PIN or Fingerprint

You must enter a PIN or swipe the fingerprint you entered during setup. iPAQ Fingerprint Reader remembers your logon preference.

The next time you logon, the **PIN** or **Fingerprint** window corresponding to your last logon will be displayed.

1. Turn on your iPAQ Pocket PC.
2. Enter your 4-digit PIN or tap the **Fingerprint** tab to swipe your enrolled finger.



If your fingerprint was of poor quality, iPAQ Fingerprint Reader will ask you to swipe it again. If the quality was good, but there was not a match, the message “No match” will be displayed.

Logging On Using a PIN and Fingerprint

You must enter both a PIN and swipe the fingerprint you entered during setup.

1. Turn on your iPAQ Pocket PC.
2. Enter your 4-digit PIN.
3. Swipe your enrolled finger.

Logging On Using a Password or Fingerprint

You must enter a password or swipe the fingerprint you entered during setup.

1. Turn on your iPAQ Pocket PC.
2. Enter your password or swipe your enrolled finger.



To type letters, numbers, or punctuation, tap the **Keyboard** button at the bottom right corner of the screen. If you do not enter the correct password, you will be prompted to try again.

3. Swipe your fingerprint if you did not enter your password.

Logging On Using a Password and Fingerprint

You must enter both a password and swipe the fingerprint you entered during setup. iPAQ Fingerprint Reader remembers your logon preference.

The next time you logon, the **Password** or **Fingerprint** screen corresponding to your last logon will be displayed.

1. Turn on your iPAQ Pocket PC.
2. Enter your password.




If you do not enter the correct password, you will be prompted to try again.

3. Tap **OK**.
4. Swipe your enrolled finger.

Logging On Using a Fingerprint Only

You must successfully swipe the fingerprint you entered during setup.

 **CAUTION:** In the event that an incorrect or unsuccessful fingerprint is repeatedly or incorrectly entered, all data and applications stored in RAM are erased and the iPAQ Pocket PC is returned to the as-shipped configuration. It is recommended that you back up all data frequently when using the security features. The default number of attempts is six. You can select the maximum number of attempts for your security needs.


1. Turn on your iPAQ Pocket PC.
2. Swipe your enrolled finger.

Setting Security Options

You can set the Fingerprint Reader security on your iPAQ Pocket PC to one of three levels:

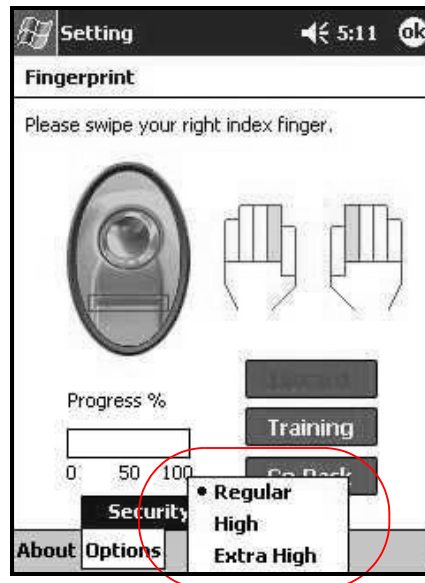
- Regular (default)
- High
- Extra High

It is recommended that you use the **Regular** security setting.

 **CAUTION:** In the event that an incorrect or unsuccessful PIN, password, and/or fingerprint is repeatedly or incorrectly entered, all data and applications stored in RAM are erased and the iPAQ Pocket PC is returned to the as-shipped configuration. It is recommended that you back up all data frequently when using the security features.

Setting the Security Level

1. From the **Today** screen, tap **Start** > **Settings** > **Password**.
2. In the **Fingerprint** screen, tap **Options** > **Security Level**.
3. Select your preferred security level.



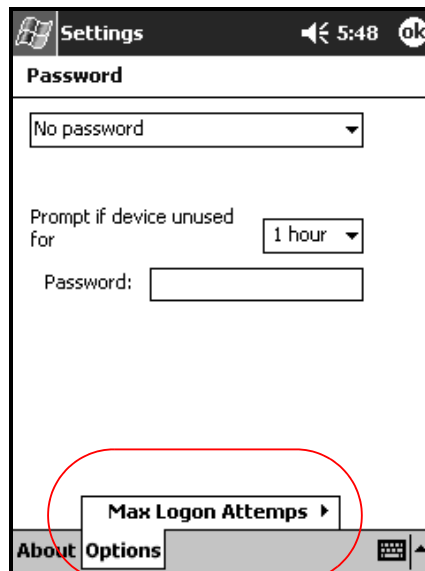
4. Tap **OK**.

You can set the maximum number of attempts allowed for logging on to your iPAQ Pocket PC.

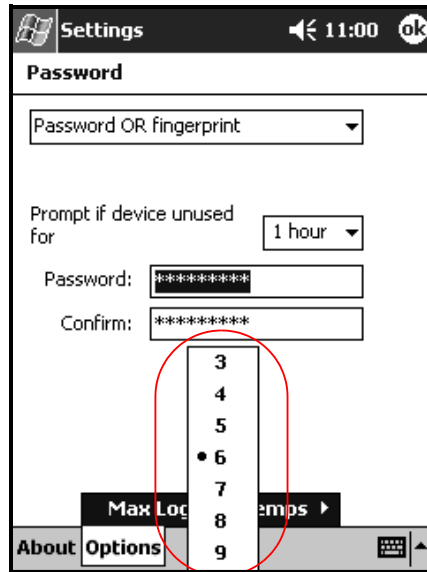
Setting the Maximum Number of Attempts

CAUTION: It is important to consider the maximum number of attempts. If you unsuccessfully enter your PIN, password, or fingerprint the maximum number of attempts, you will lose all data and applications in the RAM and your iPAQ Pocket PC will be returned to an as-shipped configuration.

1. From the **Today** screen, tap **Start > Settings > Password**.
2. When using a PIN or password, tap **Options > Max Logon Attempts**.



3. Select the maximum number of attempts.



4. Tap **OK**.

Troubleshooting

Use the following suggestions to troubleshoot problems with the iPAQ Pocket PC.

Common Problems

Problem	Solution
I cannot see anything on the screen.	<ul style="list-style-type: none">• Be sure the iPAQ Pocket PC is powered on.• Be sure the iPAQ Pocket PC is connected to the AC Adapter and the Universal Desktop Cradle.• Reset the device by using the stylus to lightly press the reset button on the bottom of the unit.• Remove and replace the battery.
I cannot keep my battery charged.	<ul style="list-style-type: none">• Always keep the iPAQ Pocket PC connected to the AC Adapter when you are not using it.• In the backlight settings, adjust the bar to a lower level to conserve more battery power.• Turn off Bluetooth and Wireless LAN (h5500 only) when not in use.
The backlight keeps turning off.	<ul style="list-style-type: none">• In Backlight Settings, increase the amount of time the backlight stays on if not in use.• Select the option to turn on the backlight when you touch the screen or push a button.

Problem	Solution
I want to travel with my iPAQ Pocket PC.	<ul style="list-style-type: none"> • Back up your information. • Take a copy of your backup with you on a SD memory card. • Disconnect all external devices. • Take the AC Adapter and Charger Adapter with you. • If you re also traveling with a notebook computer, carry your USB cable and charge your unit using your notebook computer. • Keep your iPAQ Pocket PC in a protective case and keep it in your carry-on luggage.
I want to travel internationally with my iPAQ Pocket PC.	Be sure you have the plug adapter appropriate for the country you are visiting.
I want to turn off Bluetooth and Wireless LAN for air travel	<ul style="list-style-type: none"> • To turn off Bluetooth, from the Today screen, tap the Bluetooth icon, then select Turn Bluetooth OFF. • To turn off Wireless LAN (h5500 only), from the Today screen, tap the iPAQ Wireless, then tap the WLAN icon.
I want to ship my iPAQ Pocket PC to a repair facility.	<ol style="list-style-type: none"> 1. Back up your information. 2. Disconnect all external devices. 3. Pack your iPAQ Pocket PC and any external devices requested by Customer Support in protective packaging. Include any additional documentation or items as instructed by Customer Support.

Problem	Solution
I cannot connect to a network.	<ul style="list-style-type: none"> • Be sure you have added the necessary server information. • Be sure the network you are attempting to connect to is not busy. • Be sure the proper drivers for your card are installed. • Be sure your user name and password are correct. • Tap Start > Settings > Connections tab > Connections and check your connection settings. Tap OK when you are finished to save your changes. • Be sure the hardware you are using with your iPAQ Pocket PC is properly configured and operational. • Reset the device by using the stylus to lightly press the reset button on the bottom of the unit.
When I try to open the Inbox, I receive an error or the application hangs.	Limit the number of e-mail services you create.
I get an error when I try to record a note in Calendar or in Tasks.	Try using a more compressed recording format in Calendar or Tasks (8,000 Hz, Mono [.7 KB/s] is the most compressed format available). To switch to a more compressed recording format, from the Today screen, tap Start > Settings > Input > Options tab.
I want to see the current date.	<ol style="list-style-type: none"> 1. From the Today screen, tap Start > Calendar. 2. Tap the Go-to-Today icon to see today's date.
I cannot see all my appointments.	Be sure the appointment you created is in the selected category.

Problem	Solution
I cannot find the document or workbook I saved.	<p>Pocket Word and Excel recognize and display documents in only one folder below <i>My Documents</i>. For example, if you created another folder in the <i>Personal</i> folder in <i>My Documents</i>, the documents in that folder will not be shown.</p> <p>To find your document or workbook, from tap Start > Programs > File Explorer. Open the folder you created, then tap the file you're looking for.</p>
My device is always asking me for a password.	<p>Tap Start > Settings > Personal tab > Password to be sure the password settings are configured as you wish.</p>
I cannot get the Fingerprint Reader to work.	<ul style="list-style-type: none"> • Be sure your finger is clean when enrolling and scanning your fingerprint. • Be sure you are scanning one of the fingers you enrolled. • Be sure to use a constant speed when scanning your fingerprint. • Be sure to go through the Fingerprint Training as many times as necessary.
I cannot find files sent to me by another device.	<p>Check <i>My Documents</i>, which is the default save location used to receive files.</p>

ActiveSync

For more information on Microsoft ActiveSync, refer to Chapter 2, “Using ActiveSync.”

Problem	Solution
<p>I cannot connect to my computer using the cable or the Universal Desktop Cradle.</p>	<ul style="list-style-type: none"> • Be sure you have installed Microsoft ActiveSync 3.7 or higher on your host computer before connecting your iPAQ Pocket PC to it. • Be sure your iPAQ Pocket PC is connected to the sync cable or inserted in the Universal Desktop Cradle, and that the sync cable or cradle is connected to your computer. • Be sure your iPAQ Pocket PC is securely seated in the synchronization cradle and is making contact with the cradle connector. • If you are using a serial cable, be sure it is plugged into the COM port on your host computer. • If you are using a USB cable, be sure you are running Microsoft Windows 98SE, Me, 2000, or XP and that you have installed Microsoft ActiveSync 3.7 or a later version on your computer. Also be sure you are connecting directly to a USB port on your computer and not through a USB hub. • Uninstall and reinstall ActiveSync. • If you are running personal firewall software, try disabling it. If you are then able to synchronize, contact the software vendor to information on configuring the required exclusions to eliminate this problem.

Problem	Solution
<p>I connected my iPAQ Pocket PC before installing Microsoft ActiveSync.</p>	<ol style="list-style-type: none"> 1. Disconnect the USB or serial cable from your computer. 2. In Windows 98, 2000, or NT 4.0, click Start > Settings > Control Panel > System. The Device Manager opens automatically. Locate and select the USB or the serial device record and click Remove (Uninstall in Windows 2000). 3. Restart your computer and allow it to detect the USB device. 4. Install Microsoft ActiveSync 3.7 or higher. 5. Reconnect the iPAQ Pocket PC cable or Universal Desktop Cradle.
<p>Microsoft ActiveSync cannot locate my iPAQ Pocket PC when I synchronize.</p>	<ul style="list-style-type: none"> • Be sure the device is on. • Be sure all cables are securely connected. • Remove your iPAQ Pocket PC from the Universal Desktop Cradle or disconnect it from the Autosync Cable, power on the unit by pressing the Power button, then put it back in the synchronization cradle or connect it to the cable. • If your iPAQ Pocket PC is inserted into an Expansion Pack or cover and then into the Universal Desktop Cradle, try removing it and then placing the Pocket PC alone back into the Universal Desktop Cradle. • Reset the device by using the stylus to lightly press the Reset button on the bottom of the unit. • Check Connection Settings in ActiveSync on your personal computer to ensure the communications port you are using is active.
<p>I cannot open e-mail in the Inbox after I restore using Microsoft ActiveSync.</p>	<p>Use Microsoft ActiveSync to synchronize your iPAQ Pocket PC with your personal computer. For more information, refer to the "Synchronizing with Your Computer" section in Chapter 2.</p>

Problem	Solution
I tried to synchronize a workbook and the file is unresolved in Microsoft ActiveSync.	Pocket Excel does not support all Excel formatting; therefore, Microsoft ActiveSync cannot synchronize the file.

Expansion Cards

For more information on expansion cards, refer to Chapter 6, “Using Expansion Cards.”

Problem	Solution
I cannot get my iPAQ Pocket PC to recognize the expansion card.	<ul style="list-style-type: none"> • Be sure you have firmly pushed the expansion card down into the iPAQ Pocket PC. • Be sure you have inserted the appropriate card into the appropriate slot. • Be sure any third party drivers are installed.
I cannot insert my card.	<ul style="list-style-type: none"> • Be sure the label is facing the front of the unit. • Be sure you are not inserting the card at an angle. • Be sure you insert the connection area first.
I cannot remove my SD card.	Push the SD card in to release the locking mechanism. The card will pop out slightly and can then be easily removed.
My iPAQ Pocket PC cannot recognize my card.	<ul style="list-style-type: none"> • Be sure you have loaded any drivers that came with the expansion card you purchased. • Reset the device by using the stylus to lightly press the Reset button on the bottom of the unit.

Bluetooth

For more information on Bluetooth, refer to Chapter 8, “Using Bluetooth.”

Problem	Solution
I cannot discover another device.	<ul style="list-style-type: none"> • Be sure Bluetooth is turned on. • Move closer to the device. • Be sure you have not limited your ability to see devices. • Be sure the device you are attempting to connect to is on and allows access to being discovered by other devices.
I can see other devices, but I cannot connect or exchange data with them.	<ul style="list-style-type: none"> • Be sure Bluetooth is turned on. • Move closer to the device. • Be sure the other device has not restricted your access. • Try initiating pairing from the other device. Some Bluetooth-enabled device can only initiate pairing and cannot respond to pairing requests from other devices.
Other devices cannot find or connect to my device.	<ul style="list-style-type: none"> • Be sure Bluetooth is turned on. • Move closer to the device. • Be sure you have not restricted other devices from finding yours. • Check your Bluetooth settings to ensure you have allowed your device to be discovered and others to connect.
Other devices do not receive my correct business card information.	<ul style="list-style-type: none"> • Be sure you have correctly set up your business card information in Bluetooth Settings. • Check Bluetooth Settings to be sure you have not restricted this function.
The iPAQ Pocket PC cannot find my Bluetooth-enabled Mobile phone.	<ul style="list-style-type: none"> • Be sure your mobile phone is in discoverable mode. • Contact your mobile phone manufacturer and ask if there is a firmware upgrade.

Wireless LAN (h5500 only)

For more information on Wireless LAN, refer to Chapter 9, “Using the Wireless LAN.”

Problem	Solution
<p>I cannot connect to an access point.</p>	<ul style="list-style-type: none"> • Be sure the WLAN is on. • Be sure the device identified the network you want to connect to. • Be sure you provided any necessary authentication keys if prompted by the system. • Be sure your iPAQ Pocket PC is within range of the access point.
<p>I am connected to an access point, but I cannot browse the Internet.</p>	<p>If the wireless network you are connected to connects to Work, the network may require a proxy. To set up the proxy:</p> <ol style="list-style-type: none"> 1. Ask your network administrator for the proxy settings. 2. Tap the Connections icon > Add Proxy Server. 3. Refer to “Setting Up Proxy Server Settings” in Chapter 9 for more information.
<p>I do not see my wireless network on my iPAQ Pocket PC.</p>	<p>Your wireless network could be a non-broadcasting network.</p> <ol style="list-style-type: none"> 1. Tap the Connections icon > Settings. 2. Tap the Advanced tab > Network Cards > Add New Settings. 3. Follow the instructions on the screen.
<p>I cannot turn the Wireless LAN on.</p>	<ul style="list-style-type: none"> • Be sure you have enough battery charge. If the battery is low, your iPAQ Pocket PC will not turn on the WLAN in order to conserve power. • Reset the device by using the stylus to lightly press the Reset button on the bottom of the unit.

Regulatory Notices

Federal Communications Commission Notice

This equipment has been tested and found to comply with the limits for a Class B digital device, pursuant to Part 15 of the FCC Rules. These limits are designed to provide reasonable protection against harmful interference in a residential installation. This equipment generates, uses, and can radiate radio frequency energy and, if not installed and used in accordance with the instructions, may cause harmful interference to radio communications. However, there is no guarantee that interference will not occur in a particular installation. If this equipment does cause harmful interference to radio or television reception, which can be determined by turning the equipment off and on, the user is encouraged to try to correct the interference by one or more of the following measures:

- Reorient or relocate the receiving antenna
- Increase the separation between the equipment and receiver
- Connect the equipment into an outlet on a circuit different from that to which the receiver is connected
- Consult the dealer or an experienced radio or television technician for help

Modifications

The FCC requires the user to be notified that any changes or modifications made to this device that are not expressly approved by Hewlett-Packard Company may void the authority to operate the equipment.

Cables

Connections to this device must be made with shielded cables with metallic RFI/EMI connector hoods in order to maintain compliance with FCC Rules and Regulations.

Declaration of Conformity for products marked with the FCC logo—United States only

This device complies with Part 15 of the FCC Rules. Operation is subject to the following two conditions: (1) this device may not cause harmful interference, and (2) this device must accept any interference received, including interference that may cause undesired operation.

For questions regarding your product, contact:

Hewlett-Packard Company
P. O. Box 692000, Mail Stop 530113
Houston, Texas 77269-2000

Or, call 1-800-652-6672

For questions regarding this FCC declaration, contact:

Hewlett-Packard Company
P. O. Box 692000, Mail Stop 510101
Houston, Texas 77269-2000

Or, call (281) 514-3333

To identify this product, refer to the Part, Series, or Model number found on the product.

Canadian Notice

This Class B digital apparatus meets all requirements of the Canadian Interference-Causing Equipment Regulations.

Avis Canadien

Cet appareil numérique de la classe B respecte toutes les exigences du Règlement sur le matériel brouilleur du Canada.

Japanese Notice

この装置は、情報処理装置等電波障害自主規制協議会（VCCI）の基準に基づくクラスB情報技術装置です。この装置は、家庭環境で使用することを目的としていますが、この装置がラジオやテレビジョン受信機に近接して使用されると、受信障害を引き起こすことがあります。

取扱説明書に従って正しい取り扱いをして下さい。

European Union Notice



Products bearing the CE marking comply with the R&TTE Directive (1999/5/EC), EMC Directive (89/336/EEC), and the Low Voltage Directive (73/23/EEC) issued by the Commission of the European Community.

Compliance with these directives implies conformity to the following European Norms (in parentheses are the equivalent international standards and regulations):

- EN 55022 (CISPR 22)—Electromagnetic Interference
- EN 55024 (IEC61000-4-2, 3, 4, 5, 6, 8, 11)—
Electromagnetic Immunity
- EN61000-3-2 (IEC61000-3-2)—Power Line Harmonics
- EN61000-3-3 (IEC61000-3-3)—Power Line Flicker
- EN 60950 (IEC 60950)—Product Safety
- ETS 300 328—Technical requirements for radio equipment
- ETS 300 826 or EN 301 489-17—General EMC
requirements for radio equipment

This product may be used in all EU and EFTA countries.

Battery Warning



WARNING: This computer contains a lithium ion polymer rechargeable battery. To reduce the risk of fire or burns, do not disassemble, crush, puncture, short external contacts, or dispose of in fire or water.



CAUTION: Danger of explosion if battery is incorrectly replaced. Replace only with the same or equivalent type recommended by the manufacturer. Dispose of used batteries according to the manufacturer's instructions.



Because of the type of battery used in your iPAQ Pocket PC, follow local regulations regarding the safe disposal of the battery. Your vendor can advise you on local regulations, and/or the existence of any battery disposal programs in operation.

Equipment Warning



WARNING: To reduce the risk of personal injury, electrical shock, fire or damage to the equipment:

- Plug the AC Adapter into a grounded (earthed) electrical outlet that is easily accessible at all times.
 - Disconnect power from the equipment by unplugging the AC Adapter from the electrical outlet or unplugging the Synchronization cable from the host computer.
 - Do not place anything on the AC Adapter cord or any of the other cables. Arrange them so that no one may accidentally step on or trip over them.
 - Do not pull on a cord or cable. When unplugging from the electrical outlet, grasp the cord by the plug or, in the case of the AC Adapter, grasp the AC Adapter and pull out from the electrical outlet.
 - Do not use converter kits sold for appliances to power your iPAQ Pocket PC.
-

Airline Travel Notice

Use of electronic equipment aboard commercial aircraft is at the discretion of the airline.

Wireless Notices

In some situations or environments, the use of wireless devices may be restricted. Such restrictions may apply aboard airplanes, in hospitals, near explosives, in hazardous locations, etc.

If you are uncertain of the policy that applies to the use of this device, please ask for authorization to use it prior to turning it on.

U.S. Regulatory Wireless Notice

This product emits radio frequency energy, but the radiated output power of this device is far below the FCC radio frequency exposure limits. Nevertheless, the device should be used in such a manner that the potential for human contact with the antenna during normal operation is minimized.

Canadian Regulatory Wireless Notice

Operation is subject to the following two conditions: (1) this device may not cause interference, and (2) this device must accept any interference, including interference that may cause undesired operation of the device.

The term “IC:” before the certification/registration number only signifies that the Industry Canada technical specifications were met.

Japanese Regulatory Wireless Notice

この機器の使用周波数帯では、電子レンジ等の産業・科学・医療用機器のほか工場の製造ライン等で使用されている移動体識別用の構内無線局（免許を要する無線局）及び特定小電力無線局（免許を要しない無線局）が運用されています。

- 1 この機器を使用する前に、近くで移動体識別用の構内無線局及び特定小電力無線局が運用されていないことを確認して下さい。
- 2 万一、この機器から移動体識別用の構内無線局に対して電波干渉の事例が発生した場合には、速やかに使用周波数を変更するか又は電波の発射を停止した上、下記連絡先にご連絡頂き、混信回避のための処置等（例えば、パーティションの設置など）についてご相談して下さい。
- 3 その他、この機器から移動体識別用の特定小電力無線局に対して電波干渉の事例が発生した場合など何かお困りのことが起きたときは、次の連絡先へお問い合わせ下さい。

連絡先：日本ヒューレット・パッカート株式会社 TEL：0120-014121

2.4 D S 5

2.4 F H 4

Brazilian Regulatory Wireless Notice

Este equipamento opera em caráter secundário, isto é, não tem direito a proteção contra interferência prejudicial, mesmo de estações do mesmo tipo, e não pode causar interferência a sistemas operando em caráter primário.

Specifications

System Specifications

System Feature	Description
Processor	Intel XScale 400 MHz
RAM (Random Access Memory)	128 MB SDRAM (h5500) 64 MB SDRAM (h5100)
ROM (Read Only Memory)	48 MB ROM (h5500) 32 MB ROM (h5100)
SDIO slot	SD memory and SDIO card support
Display	Transflective color TFT, 240 x 320 pixels, 64K-color support, .24 mm dot pitch
LED Backlight	Multi-level brightness adjustment
Audio	Microphone, speaker, 3.5 mm stereo headphone jack, MP3 stereo through audio jack
Infrared	IrDA, data transfer up to 115.2 Kb per second
Bluetooth	Class II device; up to 4 dBm transmit, typical 10 meters (30 feet) range
Fingerprint Reader	Thermal swipe technology (h5500 only)

System Feature	Description
Communications	Communication port, Expansion Pack connector
Indicators	3-mode alarm notification: Flashing green LED, tone, pop-up message Charging: flashing amber LED Charged: solid amber LED Bluetooth active: flashing blue LED
Battery	Removable/rechargeable 1250mAh Lithium ion polymer battery with internal 10-minute bridge battery to maintain data during main battery replacement.

Physical Specifications

hp iPAQ h5100 Series

	US	Metric
Length	5.23 in	133.0 mm
Width	3.30-3.03 in tapering	84.0-77.0 mm tapering
Depth	0.63 in	15.9 mm
Weight	6.59 oz	186.9 g

hp iPAQ h5500 Series

	US	Metric
Length	5.43 in	138.0 mm
Width	3.30-3.03 in tapering	84.0-77.0 mm tapering
Depth	0.63 in	15.9 mm
Weight	7.29 oz	206.8 g

Operating Environment

Environment

		US	Metric
Temperature	Operating	32° to 104° F	0° to 40° C
	Nonoperating	-4° to 140° F	-20° to 60° C
Relative Humidity	Operating	10 to 90%	10 to 90%
	Nonoperating	10 to 90%	10 to 90%
Maximum Altitude	Operating	0-15,000 ft	14.7 to 10.1 psia
	Nonoperating	0-15,000 ft	14.7 to 10.1 psia