

EUT Internal Photos

Figure 12

Internal View (Back Cover & Rechargeable Battery Pack Removed)



Figure 13

Internal View (Rechargeable Battery, Front View)



Figure 14
Internal View (Rechargeable Battery, Back View)

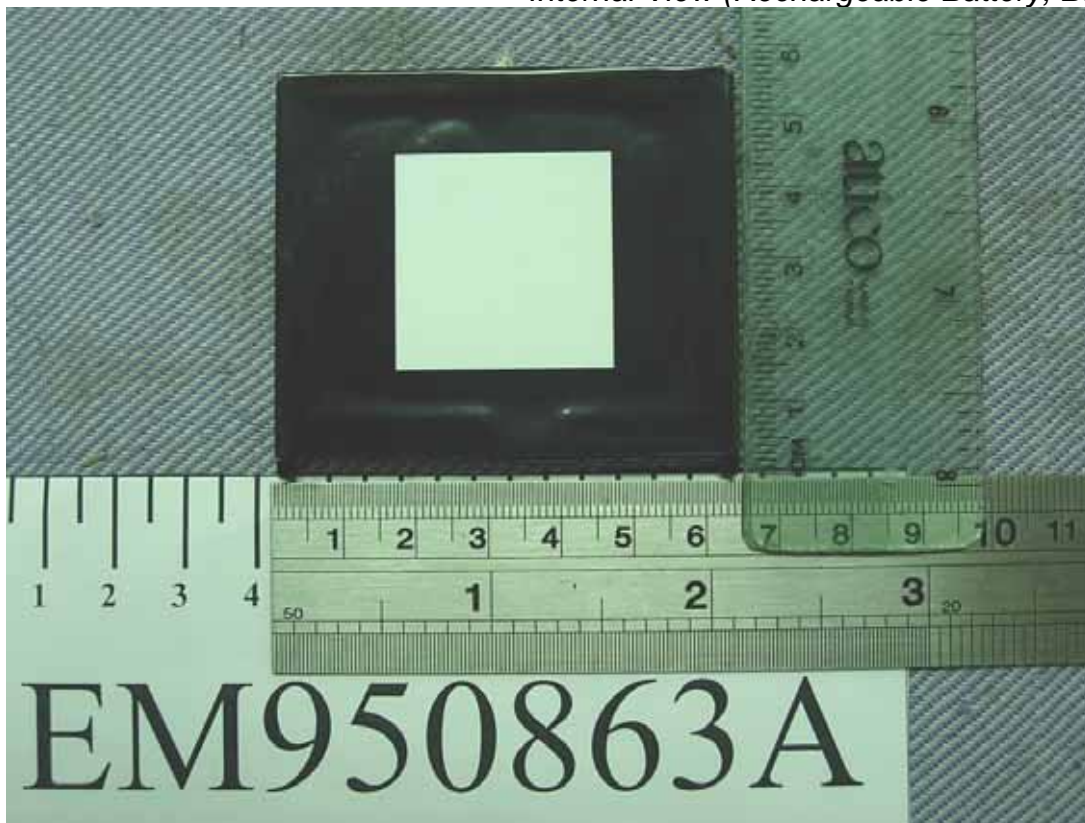


Figure 15
Internal View (Top Cover Removed)



Figure 16
Internal View (Top Cover)

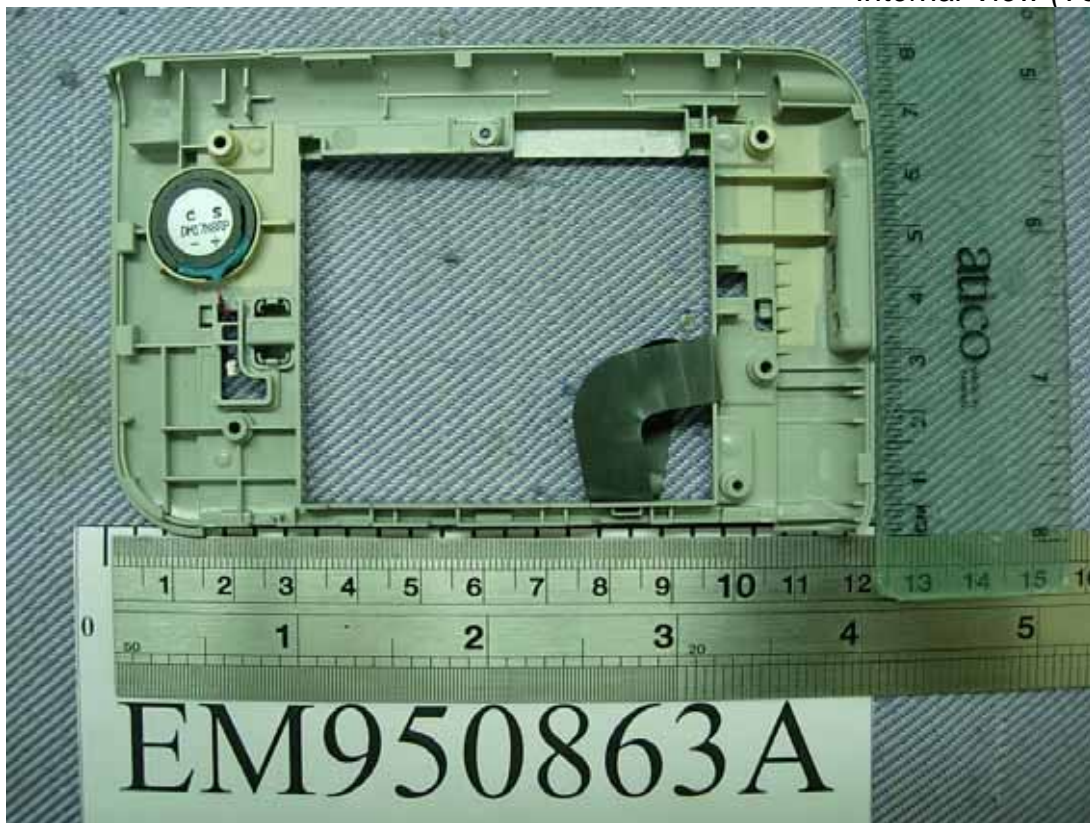


Figure 17
Internal View (Speaker)



Figure 18
Internal View (Main Board Removed)



Figure 19
Internal View (Main Board, Component Side)



Figure 20
Internal View (Main Board, Foil Side)

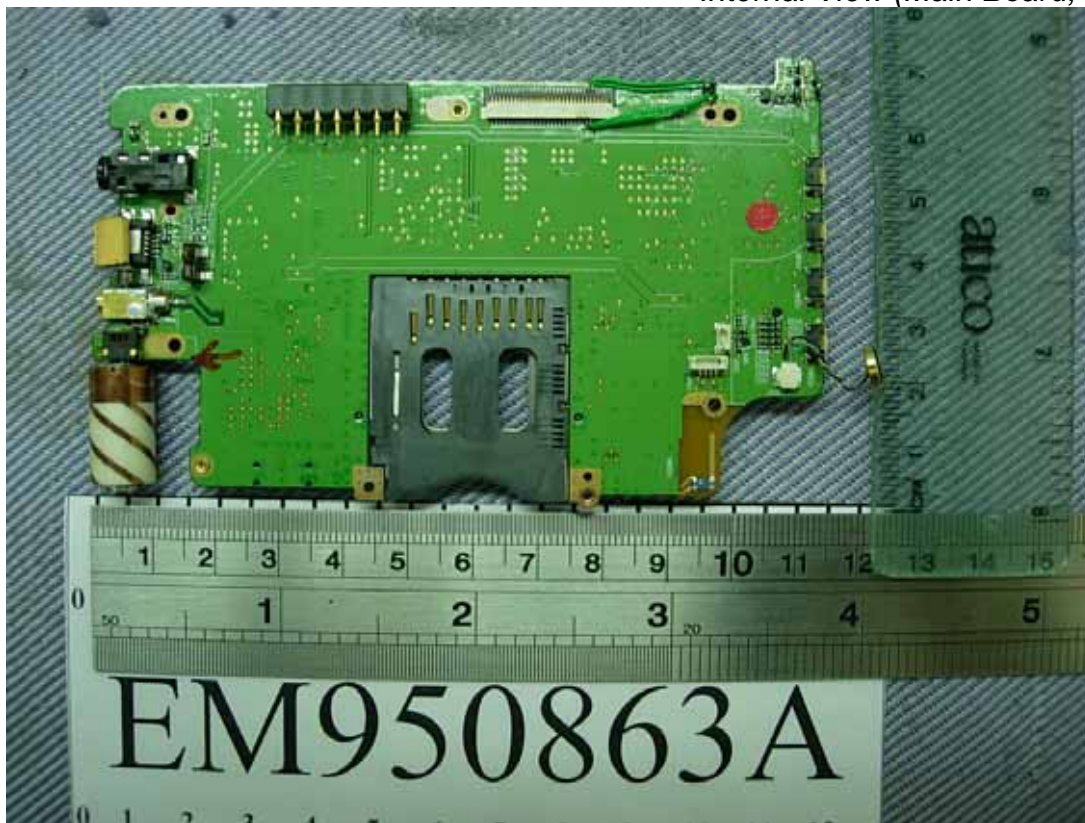


Figure 21
Internal View (Wireless LAN Module with Shield)



Figure 22
Internal View (Wireless LAN Module/ Component Side)

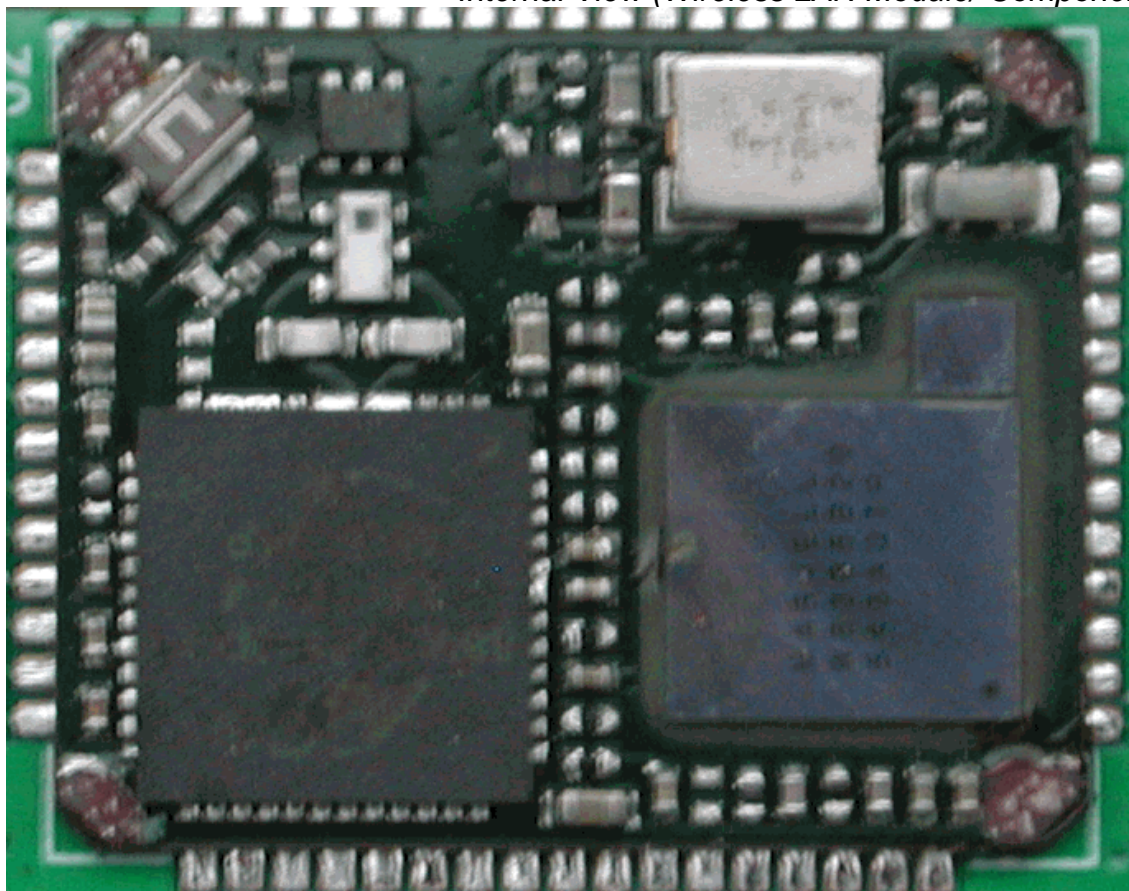


Figure 23
Internal View (Wireless LAN Module/ Foil Side)

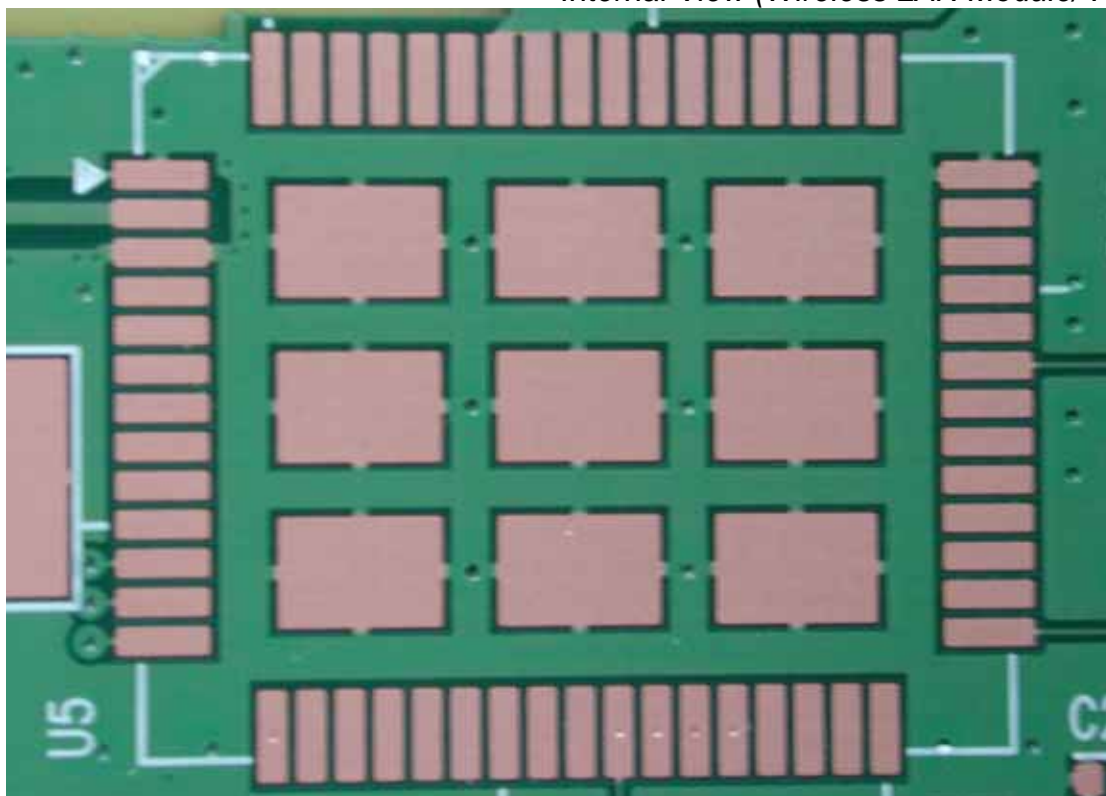


Figure 24
Internal View (Wireless LAN Module - ANTENNA Position)

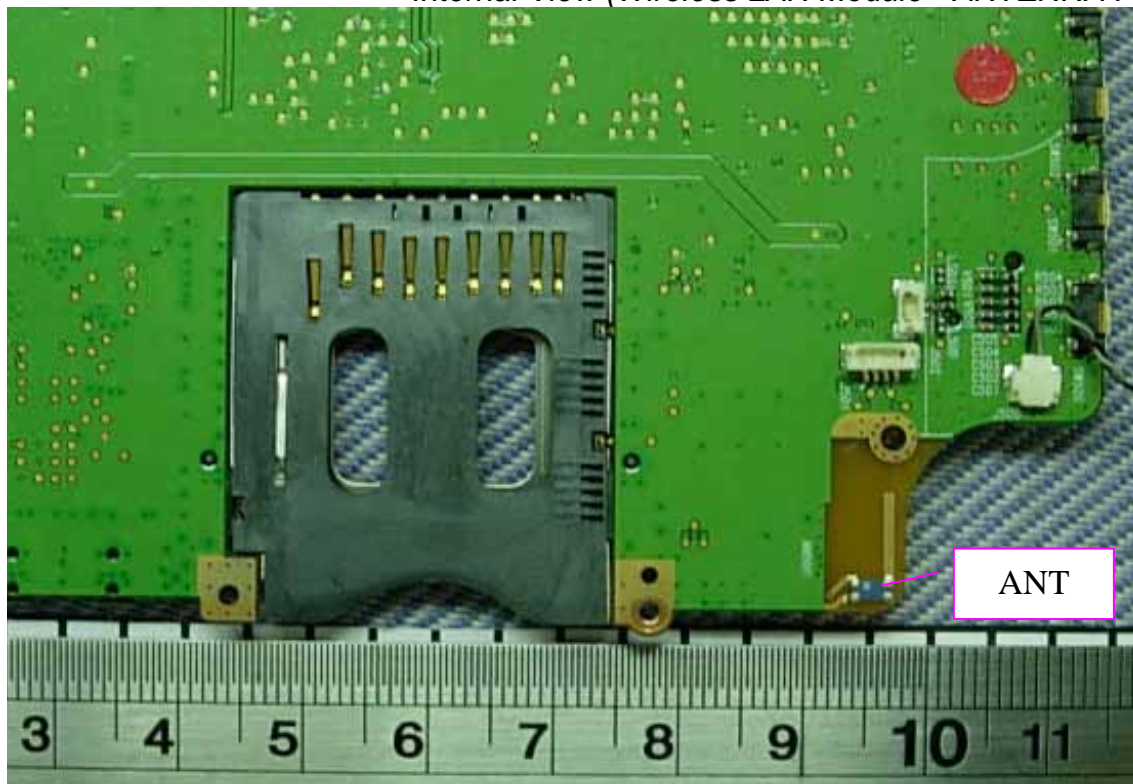


Figure 25
Internal View (Covers, LCD Panel and Bluetooth Board)



Figure 26
Internal View (Bluetooth Board, Front View)

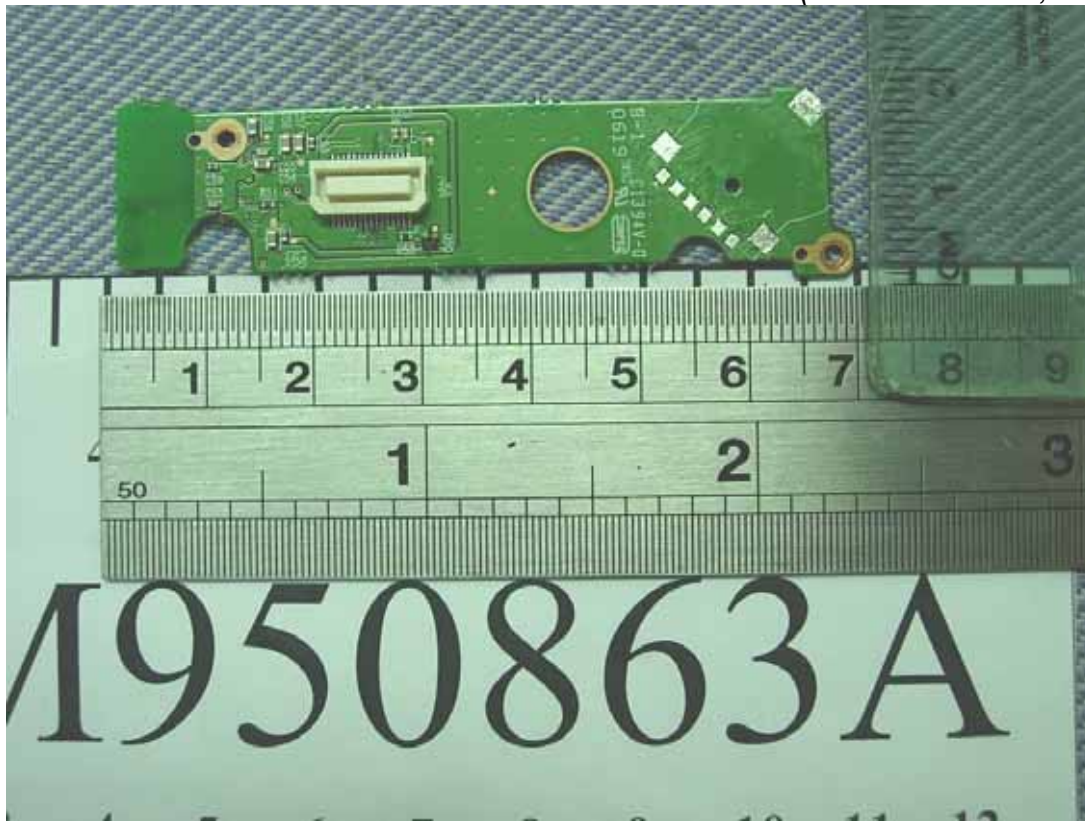


Figure 27
Internal View (Bluetooth Board, Back View)

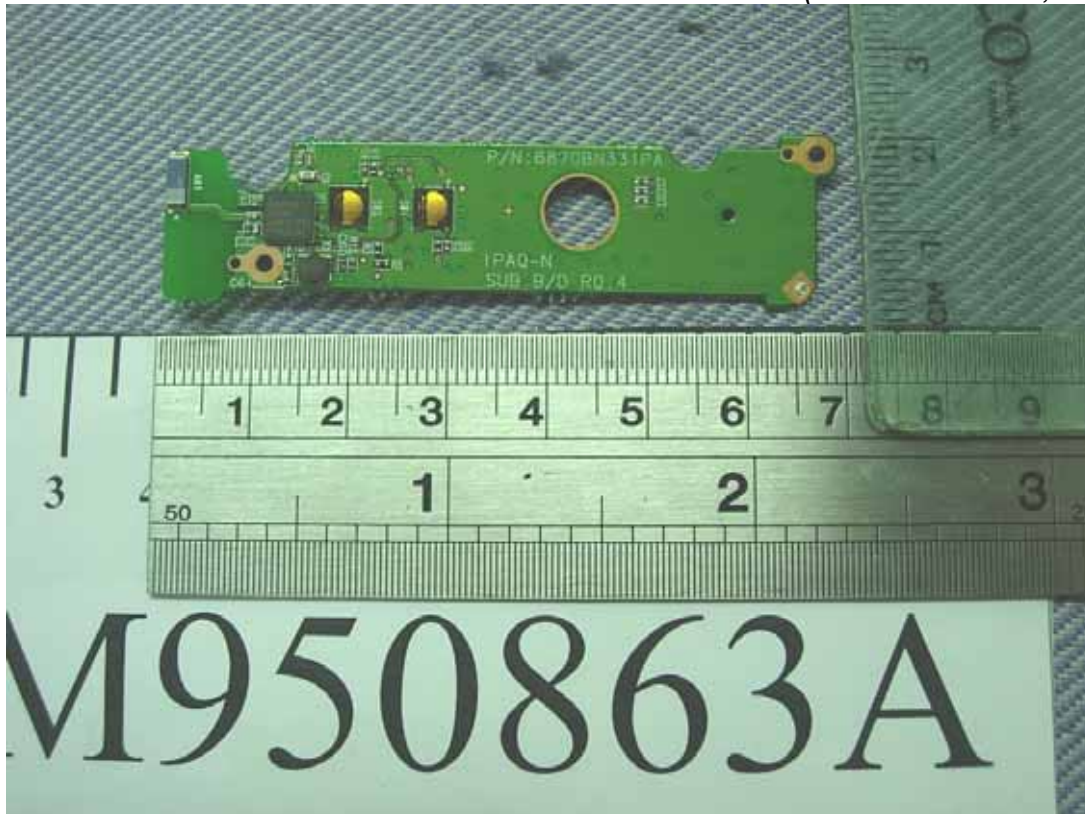


Figure 28
Internal View (Bluetooth Board - ANTENNA Position)

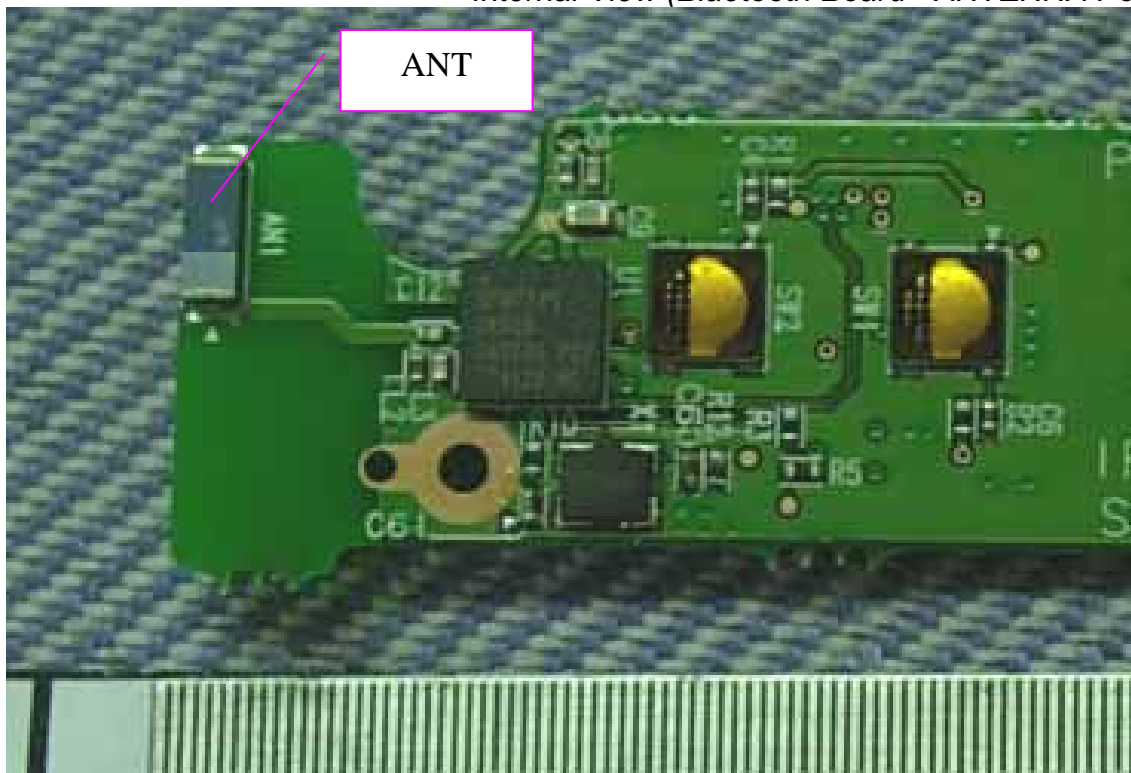


Figure 29
Internal View (LCD Panel, Front View)



Figure 30
Internal View (LCD Panel, Back View)

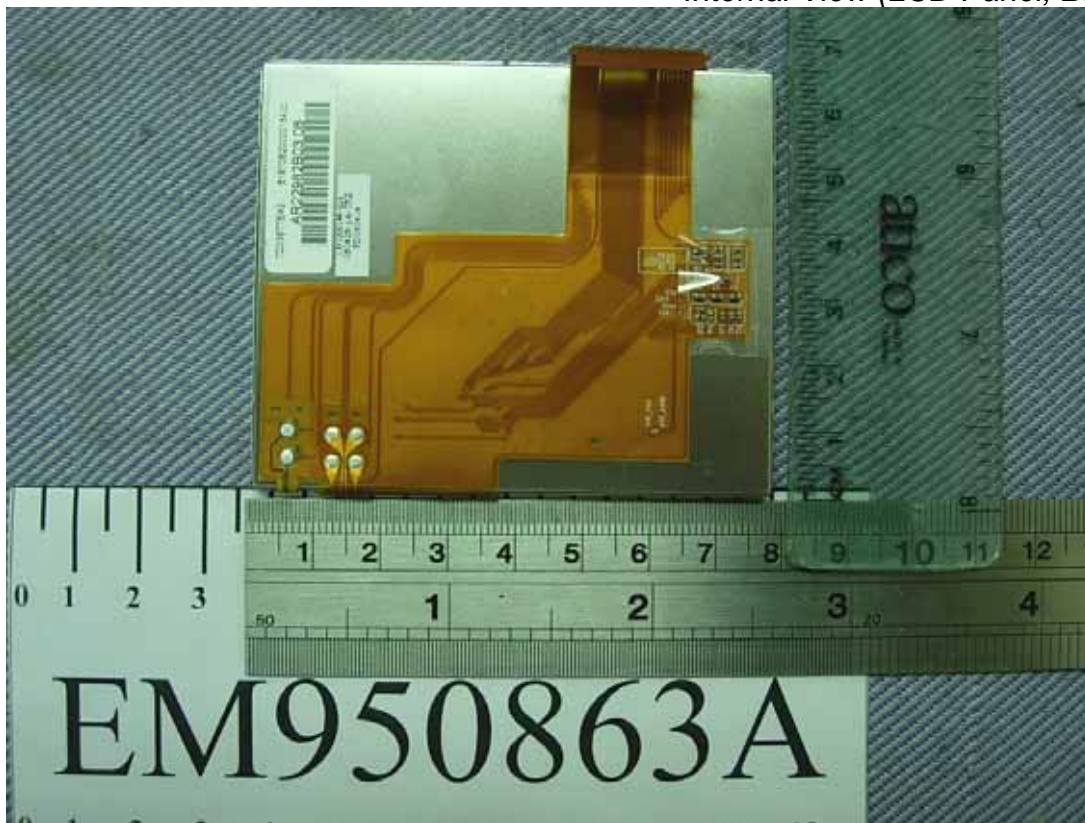


Figure 31
Switching Power Supply (Internal View)

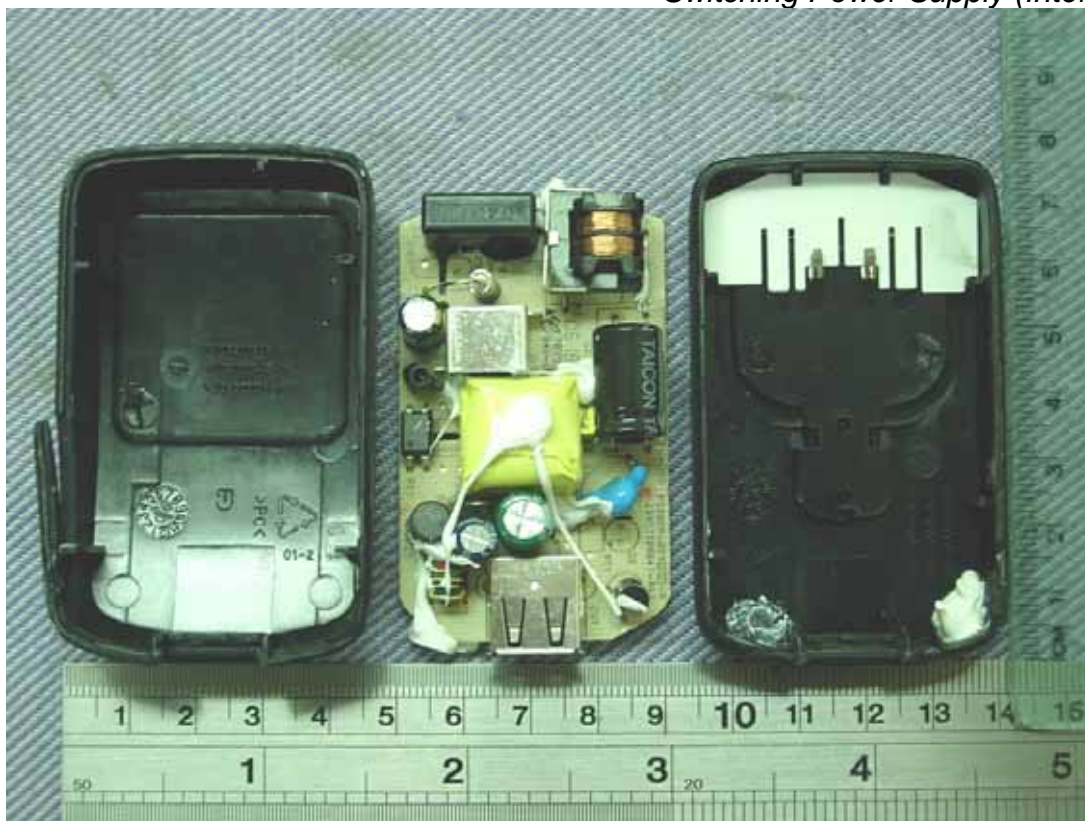


Figure 32
Switching Power Supply (PCB/ Component Side)

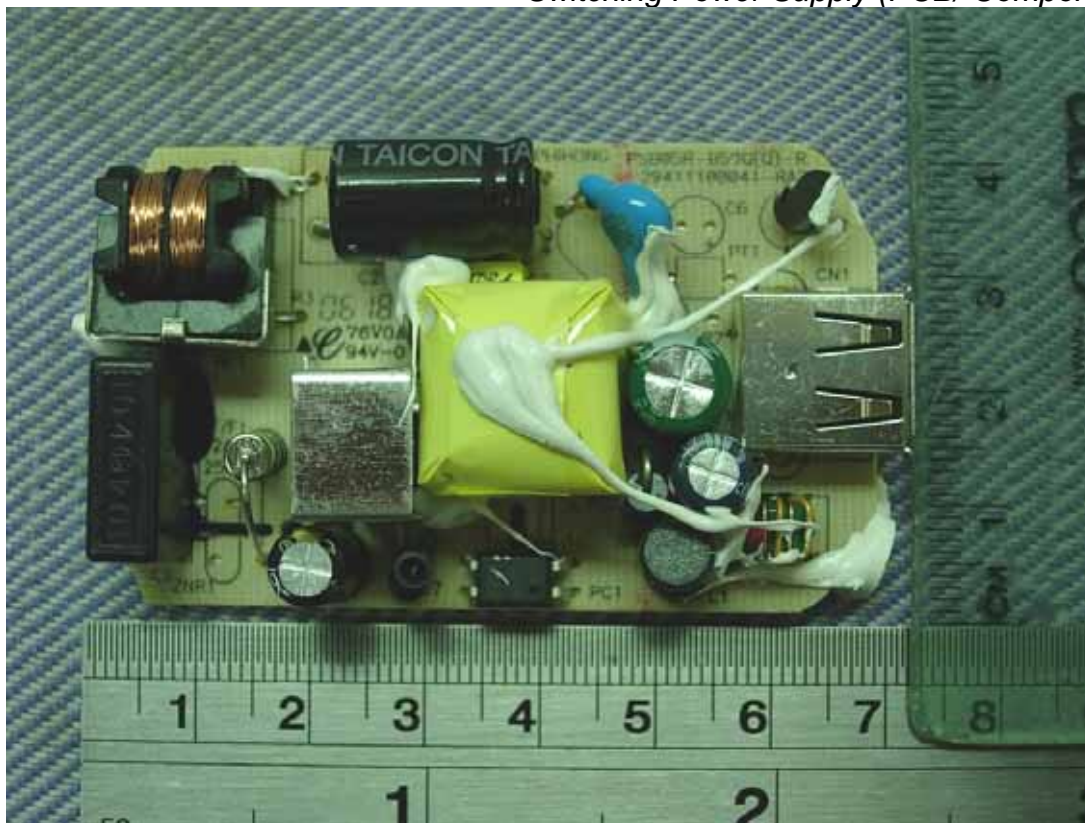


Figure 33
Switching Power Supply (PCB/ Foil Side)

