

System Check_H2450

Frequency: 2450 MHz; Duty Cycle: 1:1; Room Ambient Temperature: 23.0°C; Liquid Temperature: 22.0°C

Medium parameters used (interpolated): $f = 2450$ MHz; $\sigma = 1.833$ S/m; $\epsilon_r = 40.018$; $\rho = 1000$ kg/m³

DASY5 Configuration:

- Area Scan Setting: Find Secondary Maximum Within: 2.0 dB and with a peak SAR value greater than 0.0012W/kg
- Electronics: DAE4 Sn1486; Calibrated: 2022/5/31
- Probe: EX3DV4 - SN7369; ConvF(7.61, 7.61, 7.61) @ 2450 MHz; Calibrated: 2022/5/28
- Sensor-Surface: 1.4mm (Mechanical Surface Detection)
- Phantom: ELI V5.0 (20deg probe tilt); Type: QD OVA 002 AA; Serial: 1240

System Performance Check at Frequencies above 1

GHz/Pin=250mW/Area Scan (9x9x1): Measurement grid: dx=12mm, dy=12mm
Maximum value of SAR (measured) = 21.8 W/kg

System Performance Check at Frequencies above 1

GHz/Pin=250mW/Zoom Scan (7x7x7)/Cube 0: Measurement grid: dx=5mm, dy=5mm, dz=5mm

Reference Value = 117.3 V/m; Power Drift = -0.03 dB

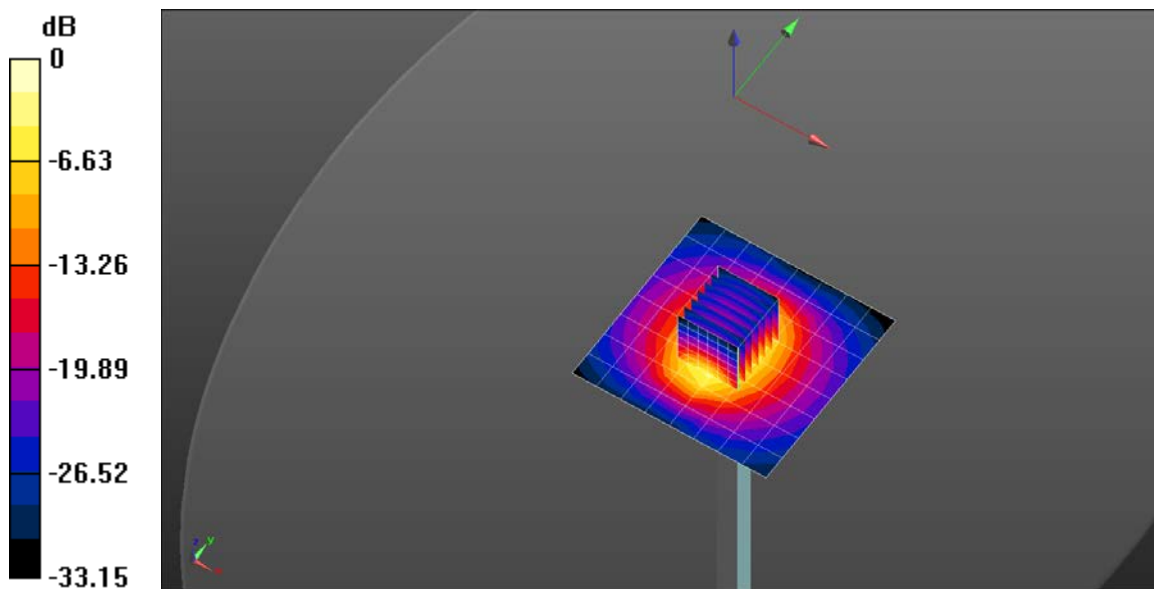
Peak SAR (extrapolated) = 26.3 W/kg

SAR(1 g) = 12.9 W/kg; SAR(10 g) = 6.01 W/kg

Smallest distance from peaks to all points 3 dB below = 9 mm

Ratio of SAR at M2 to SAR at M1 = 49%

Maximum value of SAR (measured) = 21.4 W/kg



0 dB = 21.8 W/kg = 13.38 dBW/kg

System Check_H5G

Frequency: 5200 MHz; Duty Cycle: 1:1; Room Ambient Temperature: 23.0°C; Liquid Temperature: 22.0°C

Medium parameters used: $f = 5200$ MHz; $\sigma = 4.697$ S/m; $\epsilon_r = 35.477$; $\rho = 1000$ kg/m³

DASY5 Configuration:

- Area Scan Setting: Find Secondary Maximum Within: 2.0 dB and with a peak SAR value greater than 0.0012W/kg
- Electronics: DAE4 Sn1486; Calibrated: 2022/5/31
- Probe: EX3DV4 - SN7369; ConvF(5.2, 5.2, 5.2) @ 5200 MHz; Calibrated: 2022/5/28
- Sensor-Surface: 1.4mm (Mechanical Surface Detection (Locations From Previous Scan Used)), Sensor-Surface: 1.4mm (Mechanical Surface Detection)
- Phantom: ELI V5.0 (20deg probe tilt); Type: QD OVA 002 AA; Serial: 1240

Configuration/Pin=100mW/Area Scan (10x10x1): Measurement grid:

$dx=10$ mm, $dy=10$ mm

Maximum value of SAR (measured) = 11.9 W/kg

Configuration/Pin=100mW /Zoom Scan (7x7x12)/Cube 0: Measurement

grid: $dx=4$ mm, $dy=4$ mm, $dz=2$ mm

Reference Value = 63.21 V/m; Power Drift = -0.02 dB

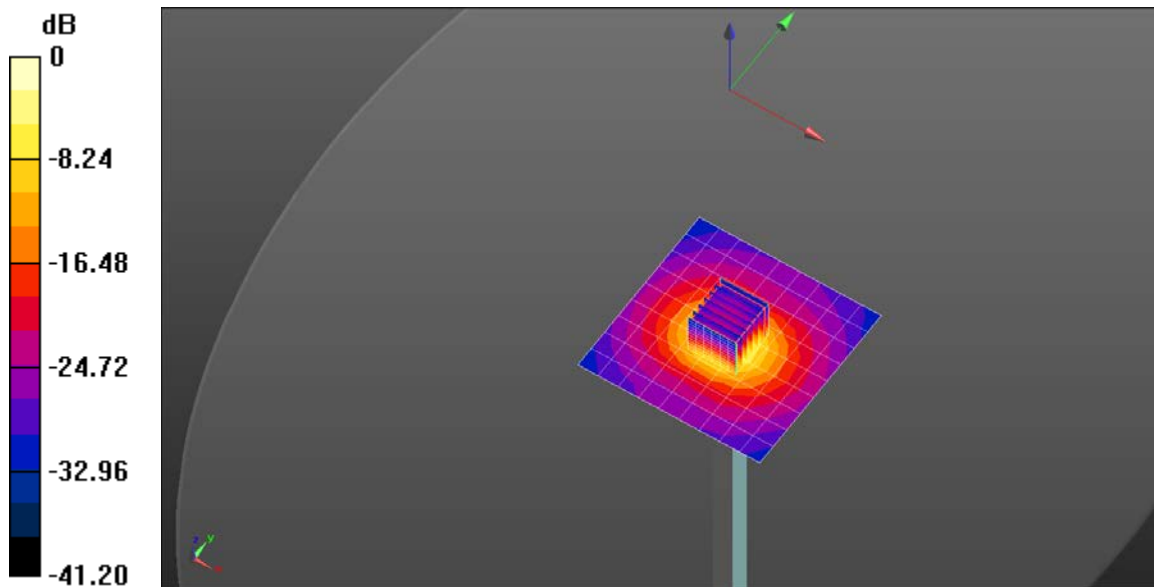
Peak SAR (extrapolated) = 31.2 W/kg

SAR(1 g) = 7.78 W/kg; SAR(10 g) = 2.23 W/kg

Smallest distance from peaks to all points 3 dB below = 7.2 mm

Ratio of SAR at M2 to SAR at M1 = 54.6%

Maximum value of SAR (measured) = 19.7 W/kg



0 dB = 19.7 W/kg = 12.94 dBW/kg

System Check_H5G

Frequency: 5300 MHz; Duty Cycle: 1:1; Room Ambient Temperature: 23.0°C; Liquid Temperature: 22.0°C
 Medium parameters used (interpolated): $f = 5300$ MHz; $\sigma = 4.817$ S/m; $\epsilon_r = 35.233$; $\rho = 1000$ kg/m³

DASY5 Configuration:

- Area Scan Setting: Find Secondary Maximum Within: 2.0 dB and with a peak SAR value greater than 0.0012W/kg
- Electronics: DAE4 Sn1486; Calibrated: 2022/5/31
- Probe: EX3DV4 - SN7369; ConvF(5.04, 5.04, 5.04) @ 5300 MHz; Calibrated: 2022/5/28
- Sensor-Surface: 1.4mm (Mechanical Surface Detection)
- Phantom: ELI V5.0 (20deg probe tilt); Type: QD OVA 002 AA; Serial: 1240

Configuration/Pin=100mW /Area Scan (10x10x1): Measurement grid:

$dx=10$ mm, $dy=10$ mm

Maximum value of SAR (measured) = 13.2 W/kg

Configuration/Pin=100mW /Zoom Scan (7x7x12)/Cube 0: Measurement

grid: $dx=4$ mm, $dy=4$ mm, $dz=2$ mm

Reference Value = 65.34 V/m; Power Drift = -0.07 dB

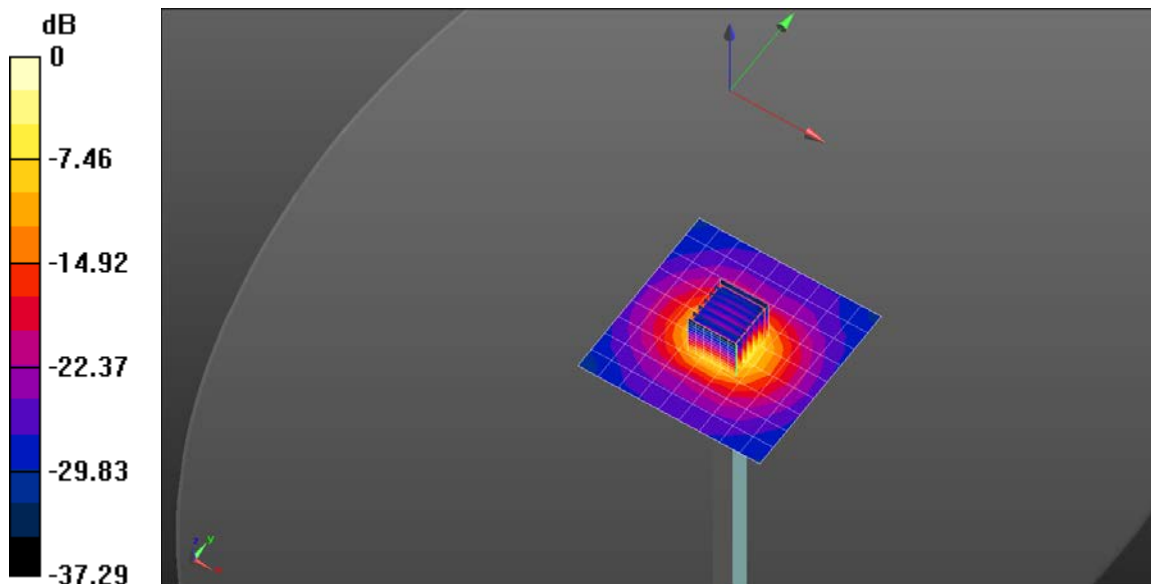
Peak SAR (extrapolated) = 34.5 W/kg

SAR(1 g) = 8.45 W/kg; SAR(10 g) = 2.42 W/kg

Smallest distance from peaks to all points 3 dB below = 7.2 mm

Ratio of SAR at M2 to SAR at M1 = 53.9%

Maximum value of SAR (measured) = 21.6 W/kg



0 dB = 21.6 W/kg = 13.34 dBW/kg

System Check_H5G

Frequency: 5600 MHz; Duty Cycle: 1:1; Room Ambient Temperature: 23.0°C; Liquid Temperature: 22.0°C

Medium parameters used: $f = 5600$ MHz; $\sigma = 5.151$ S/m; $\epsilon_r = 34.391$; $\rho = 1000$ kg/m³

DASY5 Configuration:

- Area Scan Setting: Find Secondary Maximum Within: 2.0 dB and with a peak SAR value greater than 0.0012W/kg
- Electronics: DAE4 Sn1486; Calibrated: 2022/5/31
- Probe: EX3DV4 - SN7369; ConvF(4.66, 4.66, 4.66) @ 5600 MHz; Calibrated: 2022/5/28
- Sensor-Surface: 1.4mm (Mechanical Surface Detection (Locations From Previous Scan Used)),
- Sensor-Surface: 1.4mm (Mechanical Surface Detection)
- Phantom: ELI V5.0 (20deg probe tilt); Type: QD OVA 002 AA; Serial: 1240

Configuration/Pin=100mW /Area Scan (10x10x1): Measurement grid:

$dx=10$ mm, $dy=10$ mm

Maximum value of SAR (measured) = 12.6 W/kg

Configuration/Pin=100mW /Zoom Scan (7x7x12)/Cube 0: Measurement

grid: $dx=4$ mm, $dy=4$ mm, $dz=2$ mm

Reference Value = 60.96 V/m; Power Drift = -0.02 dB

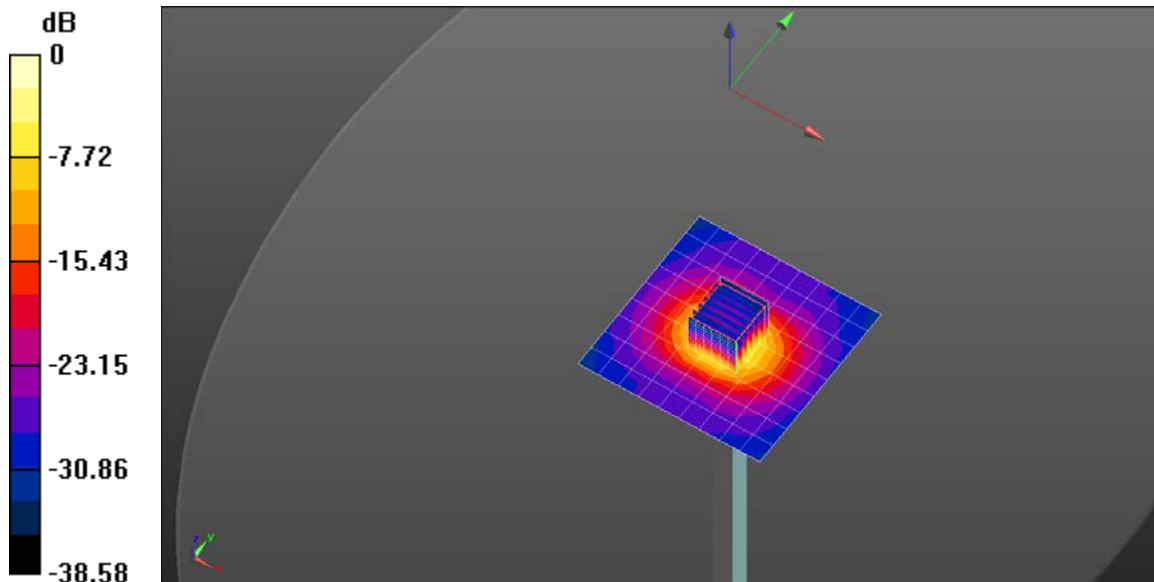
Peak SAR (extrapolated) = 34.2 W/kg

SAR(1 g) = 7.84 W/kg; SAR(10 g) = 2.24 W/kg

Smallest distance from peaks to all points 3 dB below = 7.4 mm

Ratio of SAR at M2 to SAR at M1 = 51.2%

Maximum value of SAR (measured) = 20.4 W/kg



0 dB = 20.4 W/kg = 13.10 dBW/kg

System Check_H5G

Frequency: 5800 MHz; Duty Cycle: 1:1; Room Ambient Temperature: 23.0°C; Liquid Temperature: 22.0°C

Medium parameters used: $f = 5800$ MHz; $\sigma = 5.39$ S/m; $\epsilon_r = 33.946$; $\rho = 1000$ kg/m³

DASY5 Configuration:

- Area Scan Setting: Find Secondary Maximum Within: 2.0 dB and with a peak SAR value greater than 0.0012W/kg
- Electronics: DAE4 Sn1486; Calibrated: 2022/5/31
- Probe: EX3DV4 - SN7369; ConvF(4.65, 4.65, 4.65) @ 5800 MHz; Calibrated: 2022/5/28
- Sensor-Surface: 1.4mm (Mechanical Surface Detection (Locations From Previous Scan Used)),
- Sensor-Surface: 1.4mm (Mechanical Surface Detection)
- Phantom: ELI V5.0 (20deg probe tilt); Type: QD OVA 002 AA; Serial: 1240

Configuration/Pin=100mW/Area Scan (10x10x1): Measurement grid:

$dx=10$ mm, $dy=10$ mm

Maximum value of SAR (measured) = 13.4 W/kg

Configuration/Pin=100mW/Zoom Scan (7x7x12)/Cube 0: Measurement

grid: $dx=4$ mm, $dy=4$ mm, $dz=2$ mm

Reference Value = 61.29 V/m; Power Drift = -0.01 dB

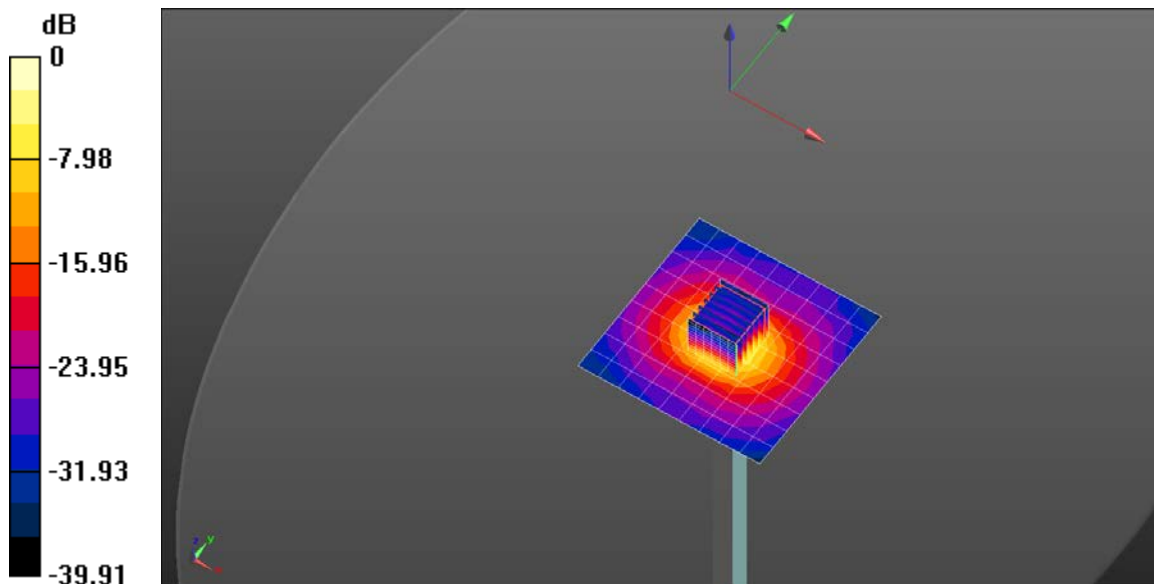
Peak SAR (extrapolated) = 38.6 W/kg

SAR(1 g) = 8.23 W/kg; SAR(10 g) = 2.32 W/kg

Smallest distance from peaks to all points 3 dB below = 7.2 mm

Ratio of SAR at M2 to SAR at M1 = 49.2%

Maximum value of SAR (measured) = 22.2 W/kg



0 dB = 22.2 W/kg = 13.46 dBW/kg