

# Regulatory WLAN Antenna Information (Template)

*English Language Required for Intel Regulatory Review / Approval*

**(OEM/ODM or antenna vendor is required to complete this document with platform antenna information.**

**Remove Intel references and make this your own document)**

Platform information											
Brand	ODM	****End product model name	Intel platform (ex: Yes, No or NA)	Platform type (ex: regular NB, convertible PC, AIO...etc)	*SAR minimum separation (mm)						
Thirdwave	Quanta Corporation	LGH/ LGHA	Yes	Regular NB	9.45						
****Please fill in exact product model name and make sure the model name is visible on product cover or any parts for end users recognize for authority inspection.											
Antenna information											
Vendor	Type	Antenna Part number (Main)				Antenna Part number (Aux)					
High-Tek Electronics Co., Ltd	PIFA	DQ60ACQD0B3 (0ACQD021021N)				DQ60ACQD0B3 (0ACQD021021N)					
Peak gain w/ cable loss (dBi)*											
	2.4GHz 2400-2483.5 MHz	5.2GHz 5150-5250MHz	5.3GHz 5250-5350MHz	5.6GHz 5470-5725MHz	5.8GHz 5725-5850MHz	5.9GHz 5850-5895MHz	6.2GHz 5925-6425MHz	6.5GHz 6425-6525MHz	6.7GHz 6525-6875MHz	7.0 GHz 6875-7125MHz	
Main	1.41	2.83	2.83	2.93	2.93	1.90	4.23	3.19	4.36	4.41	
Aux	2.20	2.22	2.65	2.72	2.88	4.22	4.14	4.23	4.58	4.38	
Intel Reference Gain/Type/ Separation distance											
Antenna Type	Antenna Peak gain (In dBi)*										Distance to the end user (mm)
	2.4GHz 2400-2483.5 MHz	5.2GHz 5150-5250MHz	5.3GHz 5250-5350MHz	5.6GHz 5470-5725MHz	5.8GHz 5725-5850MHz	5.9GHz 5850-5895MHz	6.2GHz 5925-6425MHz	6.5GHz 6425-6525MHz	6.7GHz 6525-6875MHz	7.0GHz 6875-7125MHz	
Design	3.00	5.00	5.00	5.00	5.00	5.00	5.00	5.00	5.00	5.00	Generic: refer to modular FCC SAR report Mid-power: ≥ 8 mm Low power: ≥ 5 mm
PIFA	3.24	3.64	3.73	4.77	4.97	4.72	4.83	4.30	5.37	5.59	
Dipole	2.89	2.92	3.19	4.41	4.22	4.22	4.83	4.30	4.49	5.34	
Notes (marked with *)											
* SAR minimum separation (mm)											
- Regular NB: Minimum antenna-to-body (from antenna bottom to the bottom of the device)											
- Tablet / Convertible PC: Minimum antenna-to-edge (5 sides of the device)											
- Mini-tablet: Minimum antenna-to-edge (6 sides of the device)											
* 3D Peak Antenna gain should be equal or greater than -2 dBi											
- If a host integrator plans to use a lower gain antenna of the same type, additional CBP(FCC)/EDT(EU) testing need to be performed while the module is installed in the host.											

# Table of contents

1. Applicable test method
2. Test & System Description
  - a. Test setup
  - b. Equipment list

3. Setup photo

[Section 1. Antenna Assembly Specifications](#)

[Section 2. Dimensioned Photos or Drawings of Antennas](#)

[Section 3. Radiation characteristics of antenna loaded in Host Platform](#)

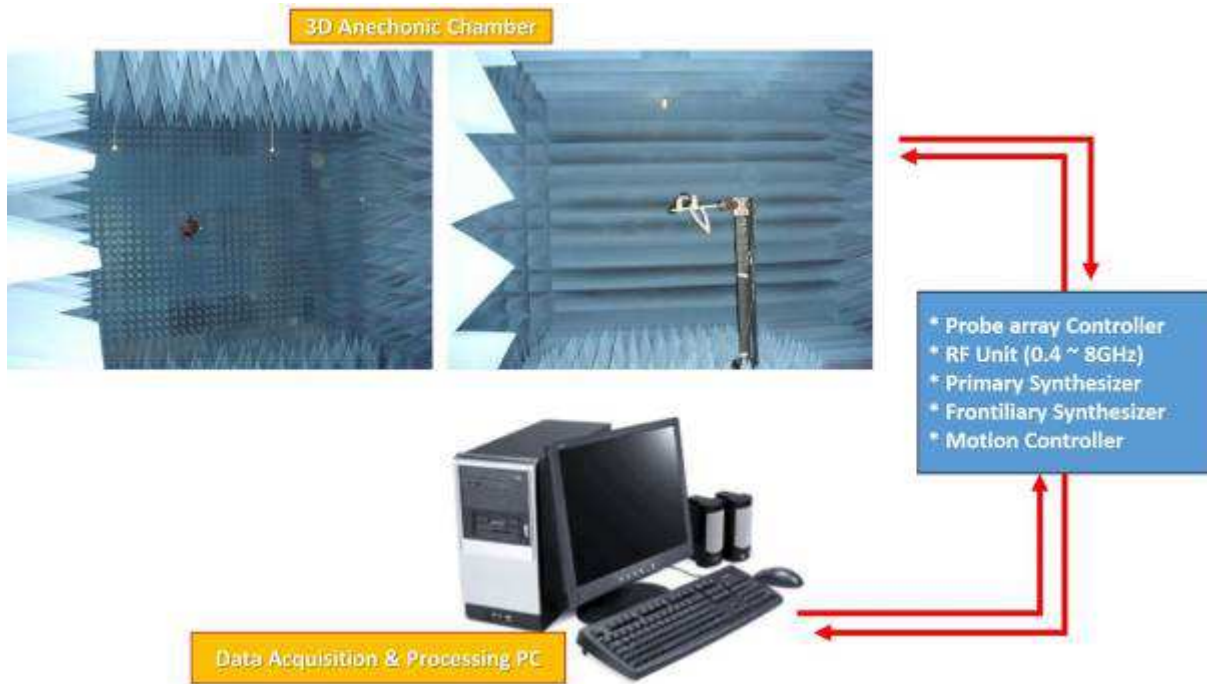
[Section 4. Antenna Host Platform Location Information](#)

[Section 5. Antenna dimensional information for SAR evaluation](#)

[Section 6. Diagram Example of Co-Location Antenna Separation](#)

### 1. Applicable test methods

The radiation pattern of antenna is measured in both horizontal polarization and vertical polarization. The radiation pattern measurements are performed in the three-dimensional anechoic chamber. The chamber provides less than  $-30\text{dB}$  reflectivity from  $800\text{MHz}$  through  $8\text{GHz}$ . The chamber is calibrated using both standard dipole antenna and horn antenna. The Gain here is expressed as  $\text{dBi}$  that standardizes the isotropic antenna. The Gain measurements and antenna radiation pattern are also performed in the same chamber described previously. Figure 2 shows the schematic diagram for measuring radiation pattern and Gain.



## 2. Test & System Description

a. Test setup

### 1. Frequency Range

2400~2500MHz, for WLAN application.

5150~5850MHz, for WLAN application

### 2. Antenna Configuration

The antenna basically has two parts; the stamping and the cable assembly with the connector on one side. The detailed drawing is attached.

### 3. VSWR

The VSWR is measured with network analyzer that support up to 8GHz. All the measurements are performed with the customer provided fixture. Figure 1 shows the typical schematic diagram for measuring VSWR.



Figure 1. The schematic diagram for measuring VSWR

## b. Equipment list

**Test Equipment**

The equipment for the antenna measurement we used is as follows:

- A. Network Analyzer, support up to 8GHz, to measure the VSWR and input impedance of antenna.
- B. Three-dimensional anechoic chamber to measure antenna gain and radiation pattern(Standard horn antenna was used to calibrate the chamber)
- C. Digital caliper to measure the dimensions.
- D. Climatic chamber for mechanical tests.
- E.

## Radiated Setup

item	Device	Type/Model	manufacturer	Cal. Date	Cal. Due Date
1	Anechoic Chamber	AMS-8500	ETS-Lindgren	2021/12/20	2022/12/20
2	Turn Table	ETS	ETS-Lindgren	N/A	N/A
3	Measurement SW	EMQuest1.08	ETS-Lindgren	N/A	N/A
4	Vector Network Analyzer	Agilent E5071B	Agilent	2021/12/17	2022/12/17
5	Receive Antenna Absorber Nested Dual- Polarized Dual-Vivaldi Array Antenna 700MHz to 6GHz	EMCO 3164-08	ETS-Lindgren	N/A	N/A
6	Multi Axis Positioning System (MAPS™)	EMCO 2115CR	ETS-Lindgren	N/A	N/A
7	MAPS™ Controller	MECO 2090	ETS-Lindgren	N/A	N/A
8	Horn antenna	3164-08	ETS-Lindgren	2021/12/15	2022/12/15
9	Cable 0.5m - 700MHz~10GHz	RG316	Senyu	2021/12/21	2022/12/21

N/A : Not Applicable

Note: Chamber calibration included full set of implement

# Antenna Information

## Section 1. Antenna Assembly Specifications

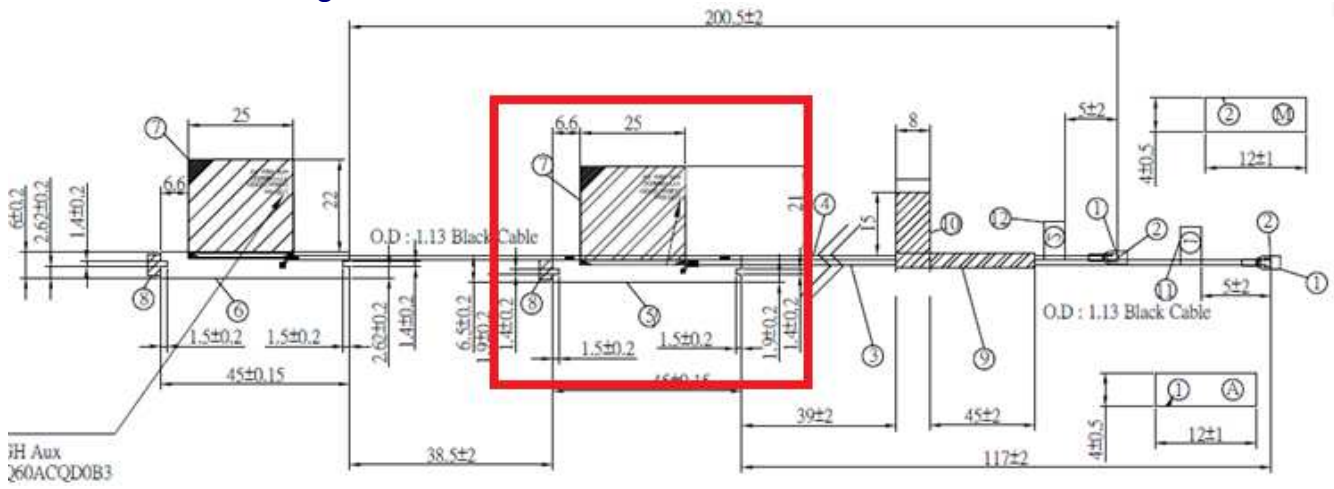
1A Antenna Part Number	1B Manufacturer	1C Antenna Type	1D Cable Assembly Part Number and Information	Freq Range MHz	1E * Peak Gain W/ Cable loss (dBi)	1F Peak Gain w/o Cable Loss (dBi)	1G Max VSWR	1H Cable Loss (dB)
(P/N: DQ60ACQD0B3 (0ACQD021021N)) Main Antenna	High-Tek Electronics Co., Ltd	PIFA	Connector: Caimei 958-C413-W-B-Bu-A0 50 Ohm Coaxial Length: 117 mm Diameter:1.13 mm	2400-2483.5	1.41	1.85	3.00	0.44
				5150-5250	2.83	3.47	3.00	0.64
				5250-5350	2.83	3.47	3.00	0.64
				5470-5725	2.93	3.59	3.00	0.66
				5725-5850	2.93	3.61	3.00	0.68
				5850-5895	1.90	2.58	3.00	0.68
				5925-6425	4.23	4.96	3.00	0.73
				6425-6525	3.19	3.93	3.00	0.74
				6525-6875	4.36	5.12	3.00	0.76
				6875-7125	4.41	5.21	3.00	0.80
(P/N: DQ60ACQD0B3 (0ACQD021021N)) Aux Antenna	High-Tek Electronics Co., Ltd	PIFA	Connector: Caimei 958-C413-W-B-Bu-A0 50 Ohm Coaxial Length: 200 mm Diameter:1.13 mm	2400-2483.5	2.20	2.95	3.00	0.75
				5150-5250	2.22	3.31	3.00	1.09
				5250-5350	2.65	3.74	3.00	1.09
				5470-5725	2.72	3.85	3.00	1.13
				5725-5850	2.88	4.04	3.00	1.16
				5850-5895	4.22	5.39	3.00	1.17
				5925-6425	4.14	5.39	3.00	1.25
				6425-6525	4.23	5.50	3.00	1.27
				6525-6875	4.58	5.88	3.00	1.30
				6875-7125	4.38	5.74	3.00	1.36

- 3D Antenna Peak Gain required being test in system basis.

## Section 2. Dimensioned Photos and Drawings of Antennas

Include the dimensioned photo and drawing of Main antenna here.

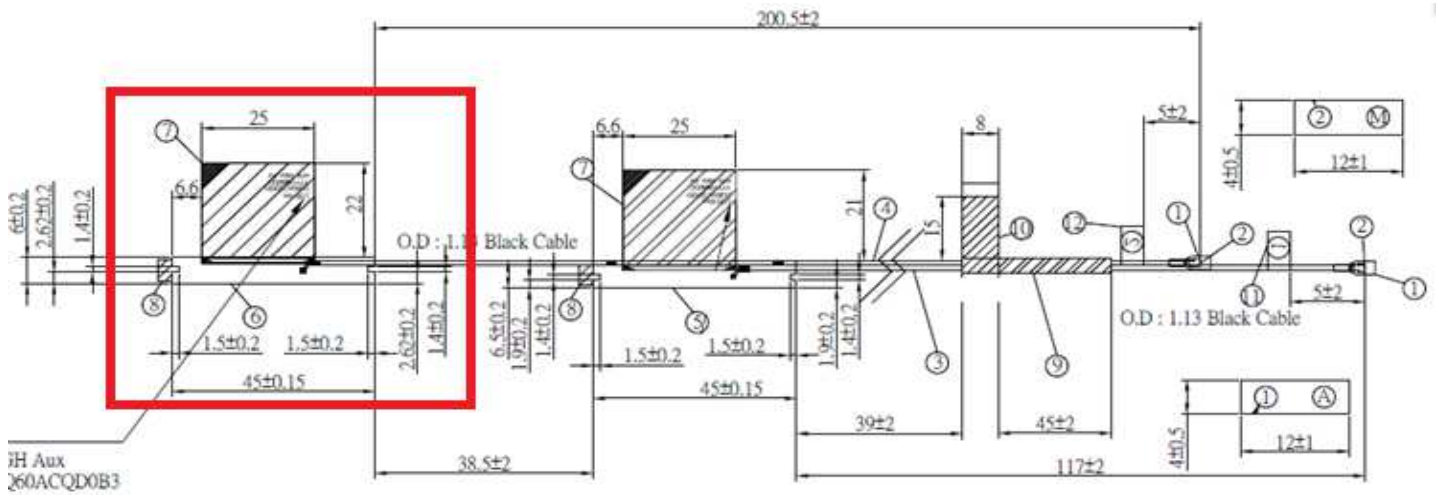
Main Antenna Drawing:



Note: antenna photo should include L type ruler

Include the dimensioned photo and drawing of Aux antenna here.

Aux Antenna Drawing:



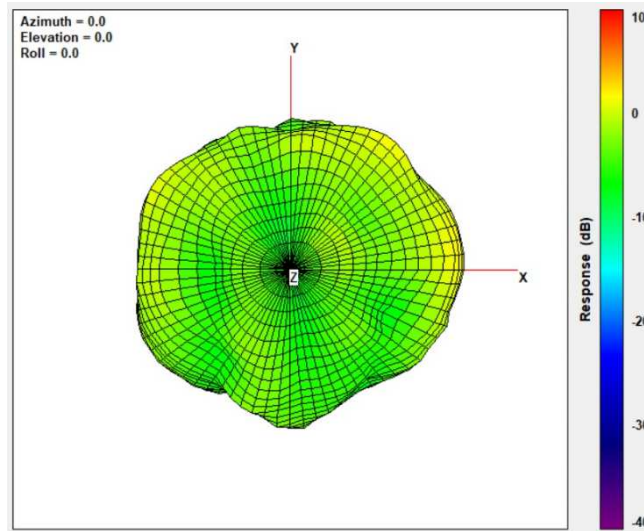
Note: antenna photo should include L type ruler

## Section 3. Radiation characteristics of antenna loaded in Host Platform

### Main Antenna

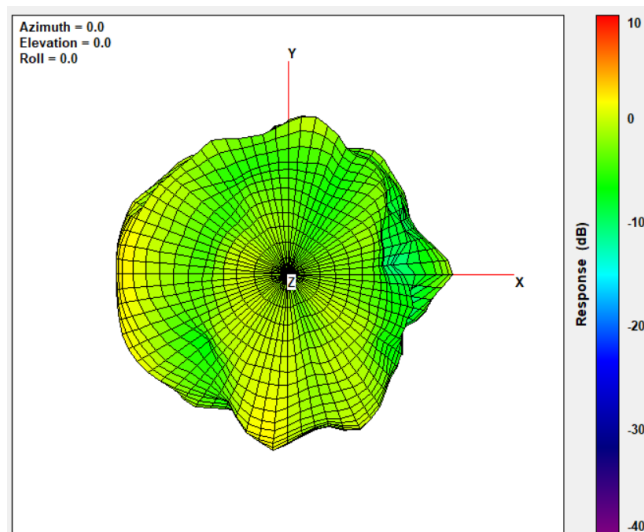
Max Antenna 3D Radiation Pattern 2400 – 2483.5 MHz

Frequency (MHz)	Peak Gain w/ Cable Loss (dBi)
2400-2483.5	1.41



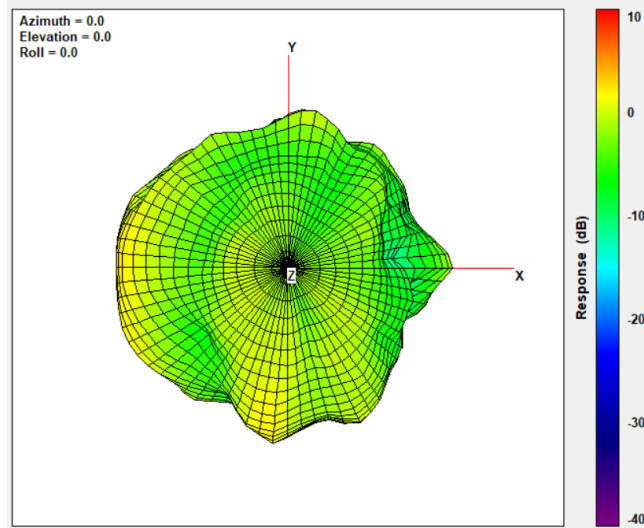
Max Antenna 3D Radiation Pattern 5150-5250 MHz

Frequency (MHz)	Peak Gain w/ Cable Loss (dBi)
5150-5250	2.83



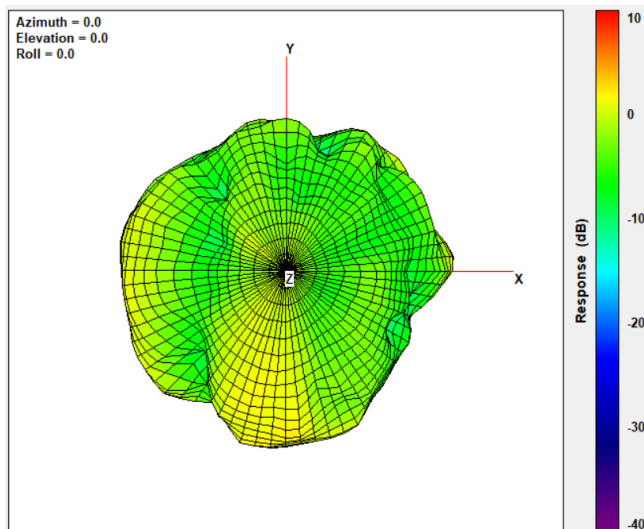
### Max Antenna 3D Radiation Pattern 5250-5350 MHz

Frequency (MHz)	Peak Gain w/ Cable Loss (dBi)
5250-5350	2.83



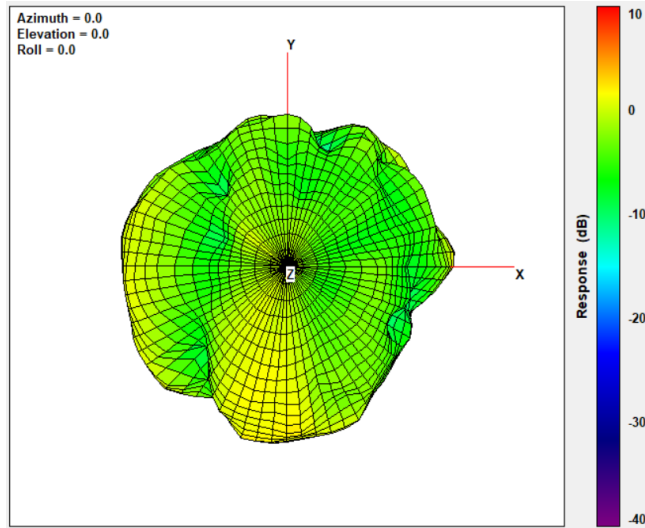
### Max Antenna 3D Radiation Pattern 5470-5725 MHz

Frequency (MHz)	Peak Gain w/ Cable Loss (dBi)
5470-5725	2.93



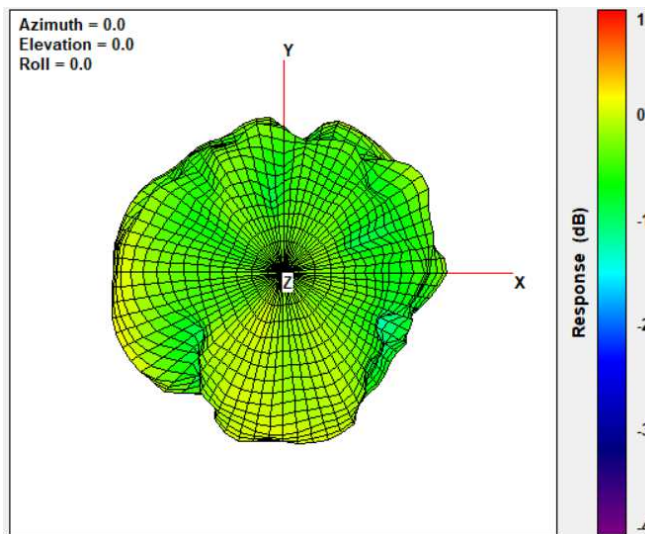
### Max Antenna 3D Radiation Pattern 5725-5850 MHz

Frequency (MHz)	Peak Gain w/ Cable Loss (dBi)
5725-5850	2.93



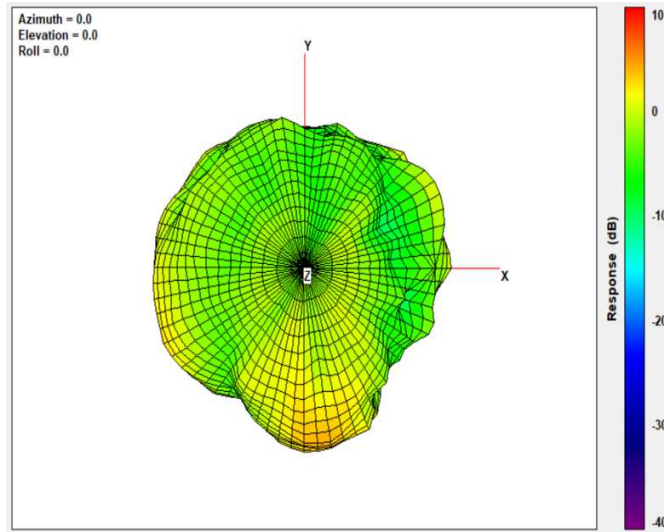
### Max Antenna 3D Radiation Pattern 5850-5895 MHz

Frequency (MHz)	Peak Gain w/ Cable Loss (dBi)
5850-5895	1.90



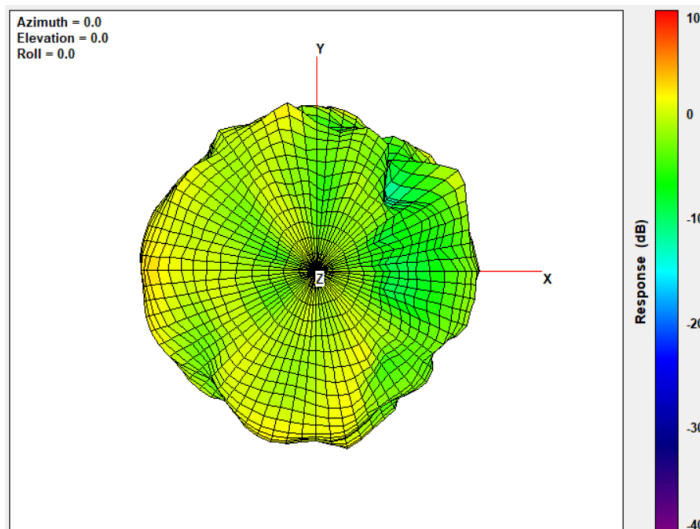
### Max Antenna 3D Radiation Pattern 5925-6425 MHz

Frequency (MHz)	Peak Gain w/ Cable Loss (dBi)
5925-6425	4.23



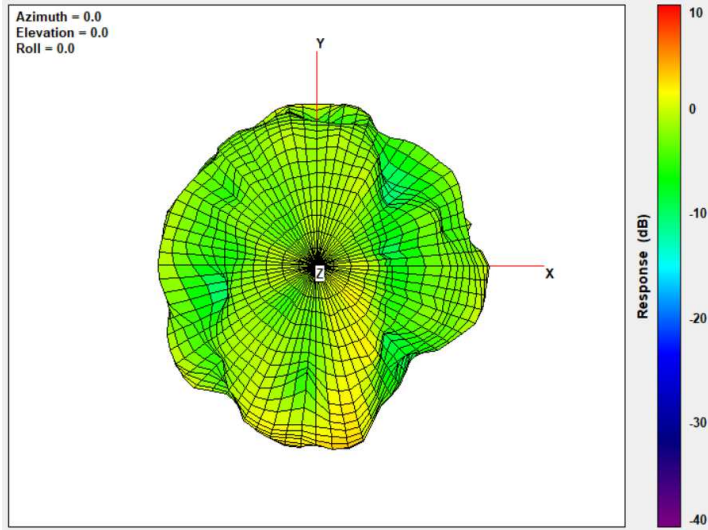
### Max Antenna 3D Radiation Pattern 6425-6525 MHz

Frequency (MHz)	Peak Gain w/ Cable Loss (dBi)
6425-6525	3.19



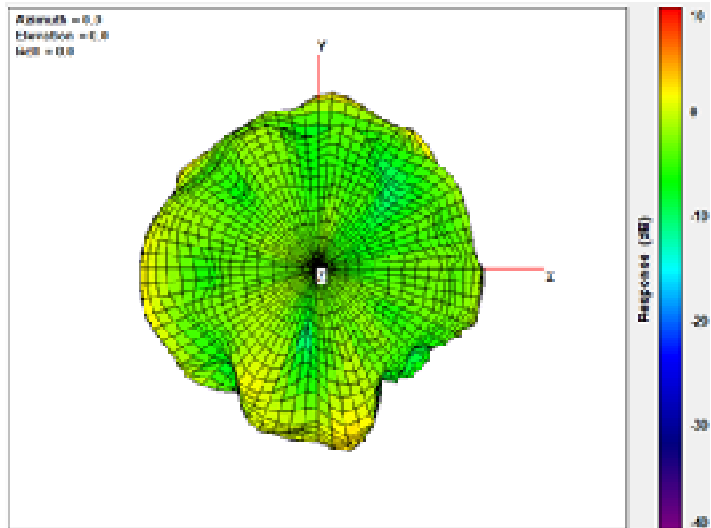
### Max Antenna 3D Radiation Pattern 6525-6875 MHz

Frequency (MHz)	Peak Gain w/ Cable Loss (dBi)
6525-6875	4.36



### Max Antenna 3D Radiation Pattern 6875-7125 MHz

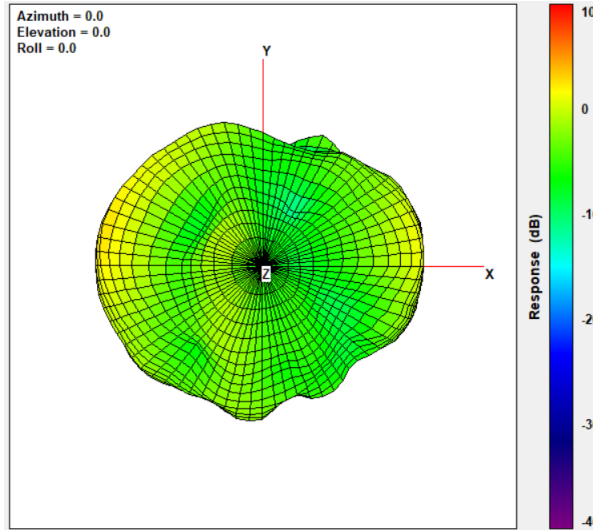
Frequency (MHz)	Peak Gain w/ Cable Loss (dBi)
6875-7125	4.41



## Auxiliary Antenna

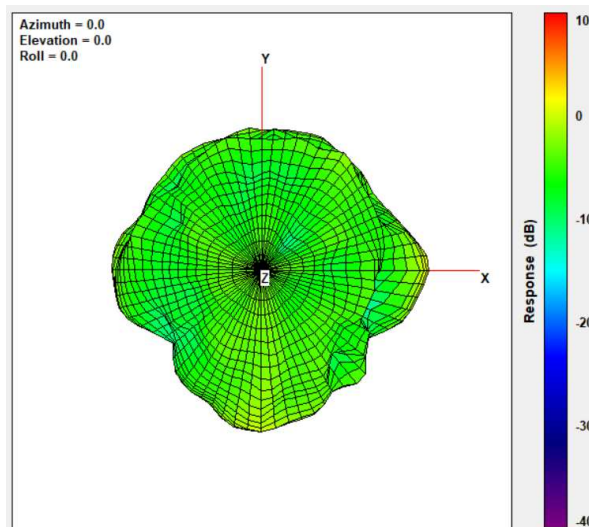
### Max Antenna 3D Radiation Pattern 2400 – 2483.5 MHz

Frequency (MHz)	Peak Gain w/ Cable Loss (dBi)
2400-2483.5	2.20



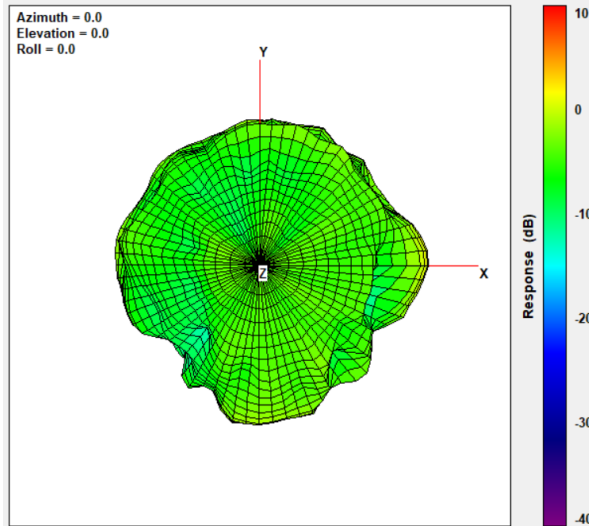
### Max Antenna 3D Radiation Pattern 5150-5250 MHz

Frequency (MHz)	Peak Gain w/ Cable Loss (dBi)
5150-5250	2.22



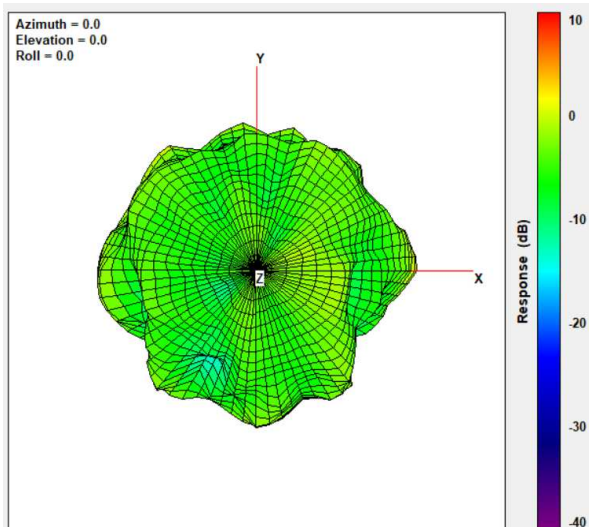
### Max Antenna 3D Radiation Pattern 5250-5350 MHz

Frequency (MHz)	Peak Gain w/ Cable Loss (dBi)
5250-5350	2.65



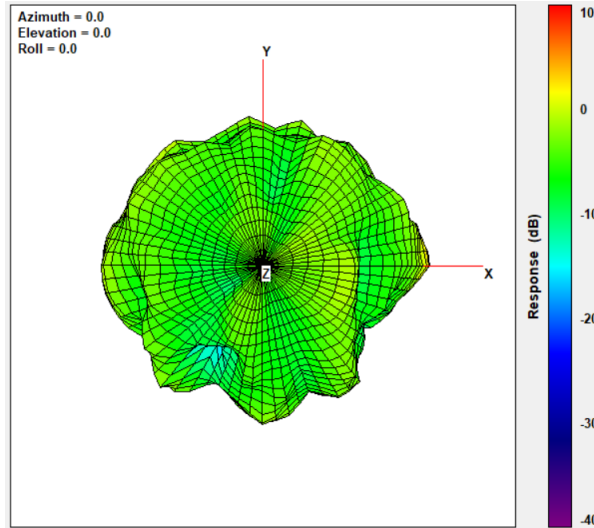
### Max Antenna 3D Radiation Pattern 5470-5725 MHz

Frequency (MHz)	Peak Gain w/ Cable Loss (dBi)
5470-5725	2.72



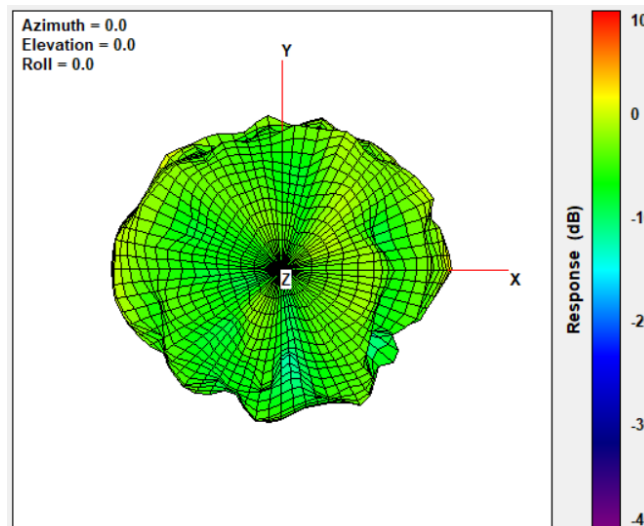
### Max Antenna 3D Radiation Pattern 5725-5850 MHz

Frequency (MHz)	Peak Gain w/ Cable Loss (dBi)
5725-5850	2.88



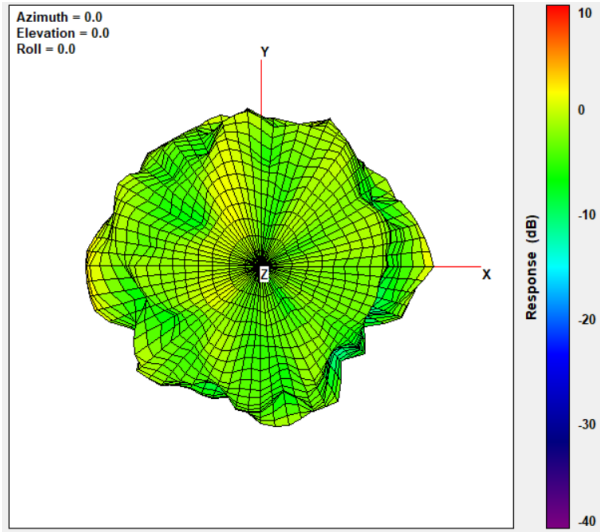
### Max Antenna 3D Radiation Pattern 5850-5895 MHz

Frequency (MHz)	Peak Gain w/ Cable Loss (dBi)
5850-5895	4.22



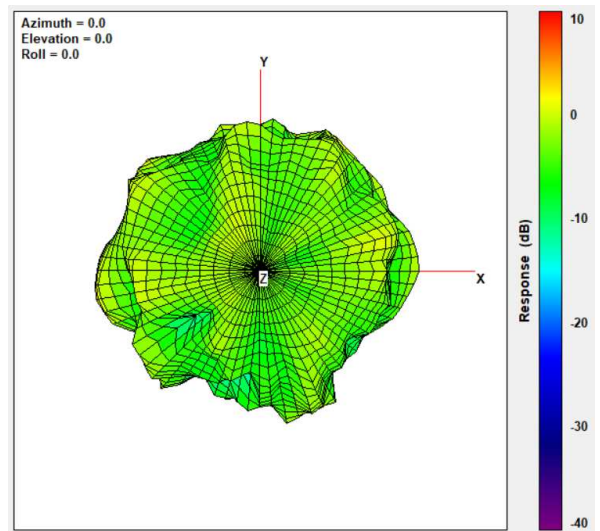
### Max Antenna 3D Radiation Pattern 5925-6425 MHz

Frequency (MHz)	Peak Gain w/ Cable Loss (dBi)
5925-6425	4.14



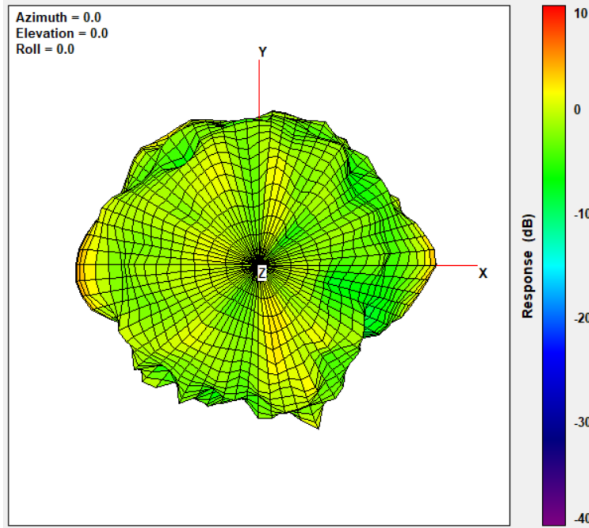
### Max Antenna 3D Radiation Pattern 6425-6525 MHz

Frequency (MHz)	Peak Gain w/ Cable Loss (dBi)
6425-6525	4.23



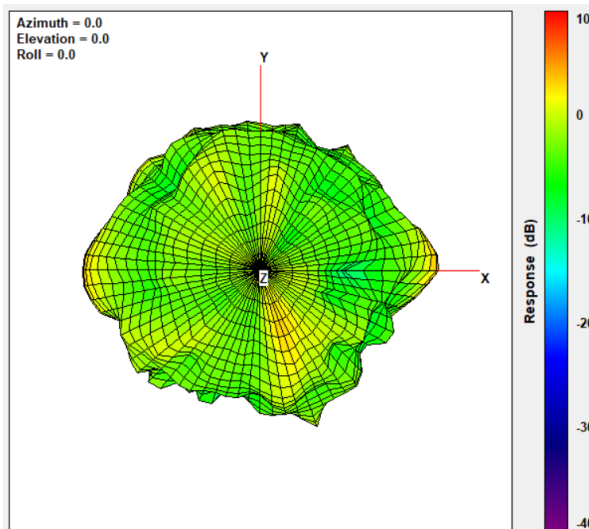
### Max Antenna 3D Radiation Pattern 6525-6875 MHz

Frequency (MHz)	Peak Gain w/ Cable Loss (dBi)
6525-6875	4.58



### Max Antenna 3D Radiation Pattern 6875-7125 MHz

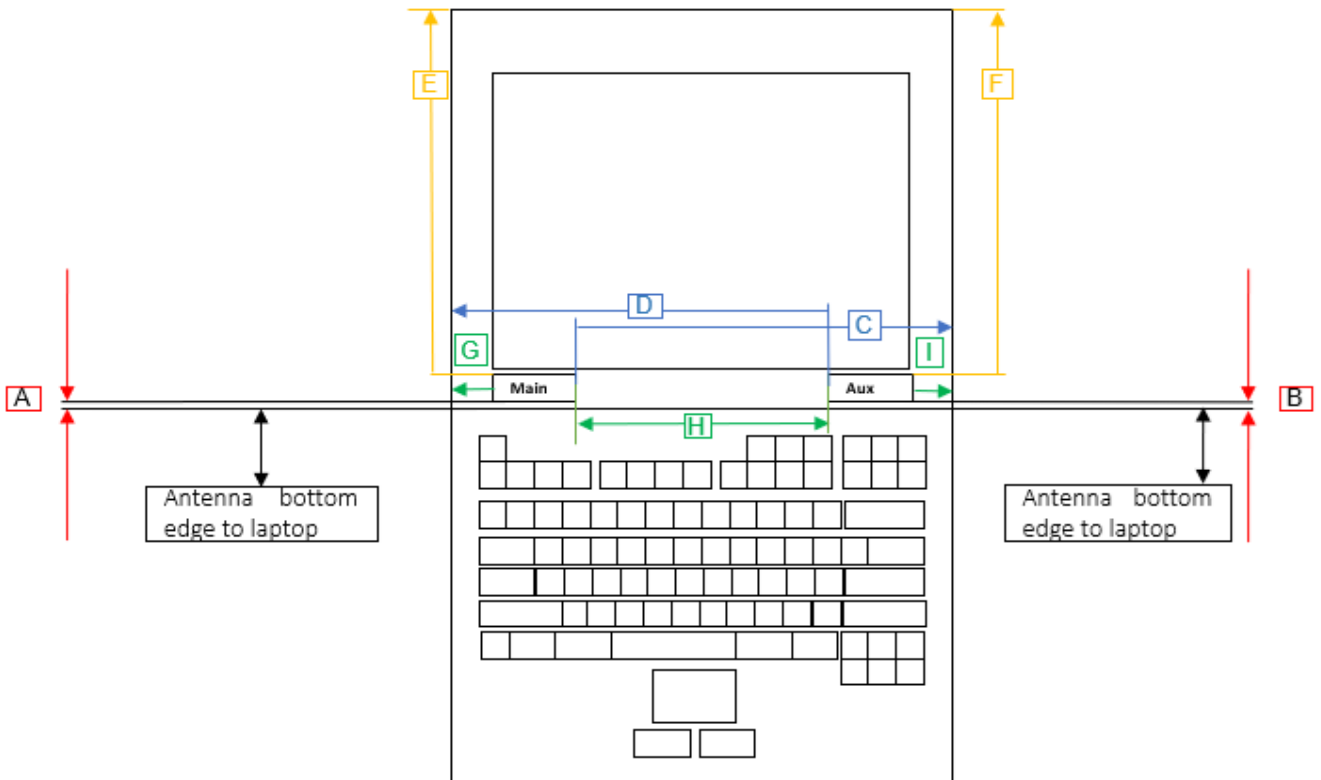
Frequency (MHz)	Peak Gain w/ Cable Loss (dBi)
6875-7125	4.38



## Section 4. Antenna Host Platform Location Information

Include a **dimensioned photo(s) or dimensioned drawing(s)** of Main and Aux antenna placements (measurements are not required for receive-only antenna).

Any antenna that transmits must show dimensions to bottom of laptop. Provide a description of the materials that are used for supporting or surrounding transmit antennas; for example, non-conductive plastics vs. conductive coated plastic or metallic materials.



Minimum Separation Distance			
Item	Antenna	Position	Distance (mm)
A	WLAN-Main	Antenna bottom edge to laptop	10.19
B	WLAN-Aux	Antenna bottom edge to laptop	10.19
C	WLAN-Main	to Right	167.42
D	WLAN-Aux	To Left	230.18
E	WLAN-Main	to Top	225.85
F	WLAN-Aux	to Top	225.85
G	WLAN-Main	to Left	146.58
H	WLAN	Aux to Main	38.6
I	WLAN-Aux	to Right	83.82

## Revision History

<b>Revision</b>	<b>Description</b>	<b>Date</b>
10.3	<u>Page2-5</u> Add Applicable test method, Test & System Description and Setup photo	July 24, 2022
10.4	<u>Cover page</u> Add Intel 5.9GHz reference antenna gain <u>Cover page/Section1/Section3</u> Add 5.9GHz antenna gain information	September 15, 2022