

● **SAR Test Result**

**Test SKU: SKU #1 (with INPAQ Antenna)**  
**Antenna-Main, Test Position: Screen**

Measurement Report for 17Z90SP, Screen, U-NII-5, UID 10755 AAC, Channel 47 (6185.0MHz)

**Device under Test Properties**

Model, Manufacturer	Dimensions [mm]	IMEI	DUT Type
17Z90SP,	379.0 x 266.0 x 10.0		Laptop

**Exposure Conditions**

Phantom Section, TSL	Position, Test Distance [mm]	Band	Group, UID	Frequency [MHz], Channel Number	Conversion Factor	TSL Conductivity [S/m]	TSL Permittivity
Flat, HSL	Screen, 5.00	U-NII-5	WLAN, 10755-AAC	6185.0, 47	5.25	5.77	34.5

**Hardware Setup**

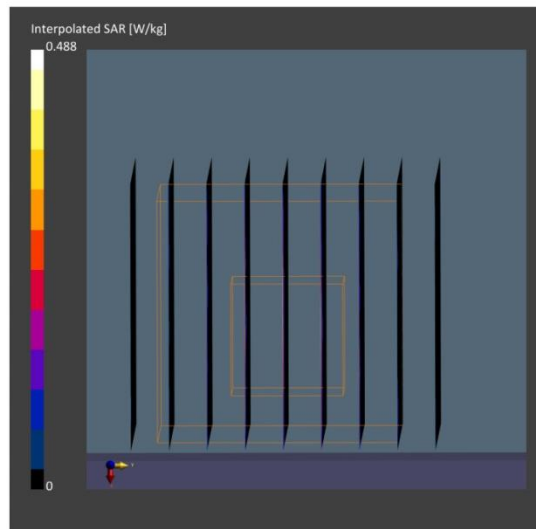
Phantom	TSL, Measured Date	Probe, Calibration Date	DAE, Calibration Date
ELI V5.0 (20deg probe tilt) - 1170	HBBL-600-10000	EX3DV4 - SN3855, 2023-09-20	DAE4 Sn1337, 2023-03-31

**Scan Setup**

	Area Scan	Zoom Scan
Grid Extents [mm]	85.0 x 272.0	22.0 x 22.0 x 22.0
Grid Steps [mm]	8.5 x 8.5	3.4 x 3.4 x 1.4
Sensor Surface [mm]	3.0	1.4
Graded Grid	Yes	Yes
Grading Ratio	1.5	1.4
MAIA	Y	Y
Surface Detection	VMS + 6p	VMS + 6p
Scan Method	Measured	Measured

**Measurement Results**

	Area Scan	Zoom Scan
Date	2023-10-30	2023-10-30
psSAR1g [W/kg]	0.091	0.106
psSAR10g [W/kg]	0.026	0.030
psAPD (1.0cm <sup>2</sup> , sq) [W/m <sup>2</sup> ]		1.06
psAPD (4.0cm <sup>2</sup> , sq) [W/m <sup>2</sup> ]		0.700
Power Drift [dB]	11.49	-0.65
Power Scaling	Disabled	Disabled
Scaling Factor [dB]		
TSL Correction	No correction	No correction
M2/M1 [%]		59.0
Dist 3dB Peak [mm]		5.4



## Antenna Main, Test Position: Bottom

Measurement Report for 17Z90SP, Screen, U-NII-5, UID 10755 AAC, Channel 47 (6185.0MHz)

### Device under Test Properties

Model, Manufacturer	Dimensions [mm]	IMEI	DUT Type
17Z90SP,	379.0 x 266.0 x 10.0		Laptop

### Exposure Conditions

Phantom Section, TSL	Position, Test Distance [mm]	Band	Group, UID	Frequency [MHz], Channel Number	Conversion Factor	TSL Conductivity [S/m]	TSL Permittivity
Flat, HSL	BOTTOM, 0.00	U-NII-5	WLAN, 10755-AAC	6185.0, 47	5.25	5.77	34.5

### Hardware Setup

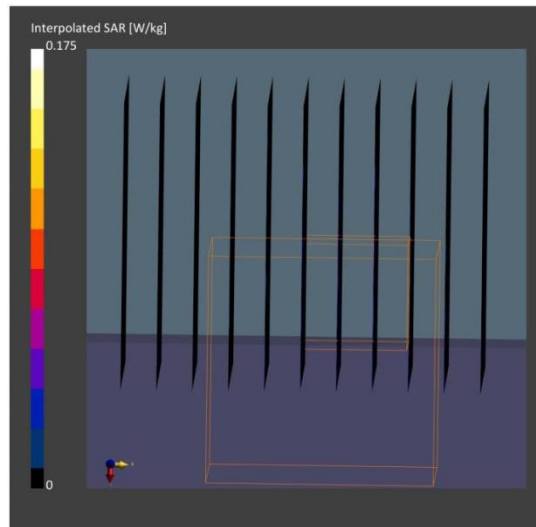
Phantom	TSL, Measured Date	Probe, Calibration Date	DAE, Calibration Date
ELI V5.0 (20deg probe tilt) - 1170	HBBL-600-10000	EX3DV4 - SN3855, 2023-09-20	DAE4 Sn1337, 2023-03-31

### Scan Setup

	Area Scan	Zoom Scan
Grid Extents [mm]	85.0 x 272.0	22.0 x 22.0 x 22.0
Grid Steps [mm]	8.5 x 8.5	3.4 x 3.4 x 1.4
Sensor Surface [mm]	3.0	1.4
Graded Grid	Yes	Yes
Grading Ratio	1.5	1.4
MAIA	Y	Y
Surface Detection	VMS + 6p	VMS + 6p
Scan Method	Measured	Measured

### Measurement Results

	Area Scan	Zoom Scan
Date	2023-10-30	2023-10-30
psSAR1g [W/kg]	0.037	0.023
psSAR10g [W/kg]	0.01	0.004
psAPD (1.0cm2, sq) [W/m2]		0.230
psAPD (4.0cm2, sq) [W/m2]		0.091
Power Drift [dB]	14.67	6.47
Power Scaling	Disabled	Disabled
Scaling Factor [dB]		
TSL Correction	No correction	No correction
M2/M1 [%]		51.8
Dist 3dB Peak [mm]		2.8



**Test SKU: SKU #1 (with LUXSHARE-ICT Antenna)**  
**Antenna-Main, Test Position: Screen**

Measurement Report for 17Z90SP, Screen, U-NII-6, UID 10755 AAC, Channel 111 (6505.0MHz)

**Device under Test Properties**

Model, Manufacturer	Dimensions [mm]	IMEI	DUT Type
17Z90SP,	379.0 x 266.0 x 10.0		Laptop

**Exposure Conditions**

Phantom Section, TSL	Position, Test Distance [mm]	Band	Group, UID	Frequency [MHz], Channel Number	Conversion Factor	TSL Conductivity [S/m]	TSL Permittivity
Flat, HSL	SCREEN, 5.00	U-NII-6	WLAN, 10755-AAC	6505.0, 111	5.25	6.08	34.0

**Hardware Setup**

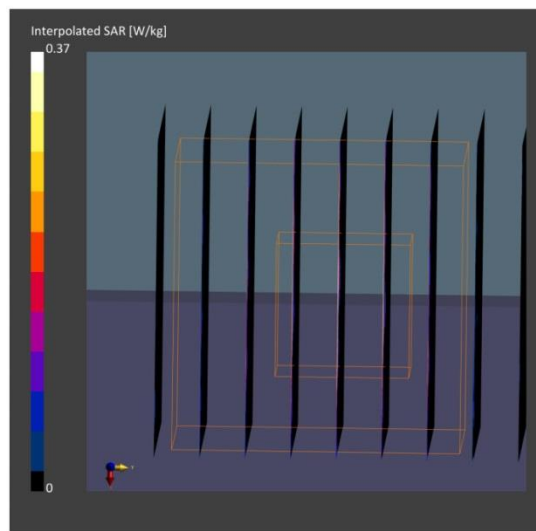
Phantom	TSL, Measured Date	Probe, Calibration Date	DAE, Calibration Date
ELI V5.0 (20deg probe tilt) - 1170	HBBL-600-10000	EX3DV4 - SN3855, 2023-09-20	DAE4 Sn1337, 2023-03-31

**Scan Setup**

	Area Scan	Zoom Scan
Grid Extents [mm]	85.0 x 272.0	22.0 x 22.0 x 22.0
Grid Steps [mm]	8.5 x 8.5	3.4 x 3.4 x 1.4
Sensor Surface [mm]	3.0	1.4
Graded Grid	Yes	Yes
Grading Ratio	1.5	1.4
MAIA	Y	Y
Surface Detection	VMS + 6p	VMS + 6p
Scan Method	Measured	Measured

**Measurement Results**

	Area Scan	Zoom Scan
Date	2023-10-30	2023-10-30
psSAR1g [W/kg]	0.068	0.064
psSAR10g [W/kg]	0.018	0.015
psAPD (1.0cm2, sq) [W/m2]		0.638
psAPD (4.0cm2, sq) [W/m2]		0.355
Power Drift [dB]	n/a	0.69
Power Scaling	Disabled	Disabled
Scaling Factor [dB]		
TSL Correction	No correction	No correction
M2/M1 [%]		63.3
Dist 3dB Peak [mm]		5.6



## Antenna Main, Test Position: Bottom

Measurement Report for 17Z90SP, Bottom, U-NII-6, UID 10755 AAC, Channel 111 (6505.0MHz)

### Device under Test Properties

Model, Manufacturer	Dimensions [mm]	IMEI	DUT Type
17Z90SP,	379.0 x 266.0 x 10.0		Laptop

### Exposure Conditions

Phantom Section, TSL	Position, Test Distance [mm]	Band	Group, UID	Frequency [MHz], Channel Number	Conversion Factor	TSL Conductivity [S/m]	TSL Permittivity
Flat, HSL	BOTTOM, 0.00	U-NII-6	WLAN, 10755-AAC	6505.0, 111	5.25	6.08	34.0

### Hardware Setup

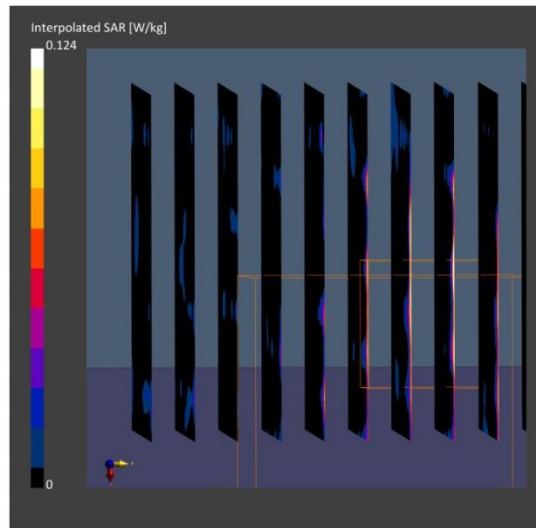
Phantom	TSL, Measured Date	Probe, Calibration Date	DAE, Calibration Date
ELI V5.0 (20deg probe tilt) - 1170	HBBL-600-10000	EX3DV4 - SN3855, 2023-09-20	DAE4 Sn1337, 2023-03-31

### Scan Setup

	Area Scan	Zoom Scan
Grid Extents [mm]	85.0 x 272.0	22.0 x 22.0 x 22.0
Grid Steps [mm]	8.5 x 8.5	3.4 x 3.4 x 1.4
Sensor Surface [mm]	3.0	1.4
Graded Grid	Yes	Yes
Grading Ratio	1.5	1.4
MAIA	Y	Y
Surface Detection	VMS + 6p	VMS + 6p
Scan Method	Measured	Measured

### Measurement Results

	Area Scan	Zoom Scan
Date	2023-10-30	2023-10-30
psSAR1g [W/kg]	0.017	0.003
psSAR10g [W/kg]	0.006	0.001
psAPD (1.0cm2, sq) [W/m2]		0.030
psAPD (4.0cm2, sq) [W/m2]		0.011
Power Drift [dB]	10.26	4.03
Power Scaling	Disabled	Disabled
Scaling Factor [dB]		
TSL Correction	No correction	No correction
M2/M1 [%]		46.8
Dist 3dB Peak [mm]		3.4



● **Worst Case For SAR Test Result**  
**Test SKU: SKU #2 (with INPAQ Antenna Antenna)**  
**Antenna- Main**

**Measurement Report for 17Z90SP, Screen, U-NII-5, UID 10755 AAC, Channel 47 (6185.0MHz)**

**Device under Test Properties**

Model, Manufacturer	Dimensions [mm]	IMEI	DUT Type
17Z90SP,	379.0 x 266.0 x 10.0		Laptop

**Exposure Conditions**

Phantom Section, TSL	Position, Test Distance [mm]	Band	Group, UID	Frequency [MHz], Channel Number	Conversion Factor	TSL Conductivity [S/m]	TSL Permittivity
Flat, HSL	SCREEN, 5.00	U-NII-5	WLAN, 10755-AAC	6185.0, 47	5.25	5.77	34.5

**Hardware Setup**

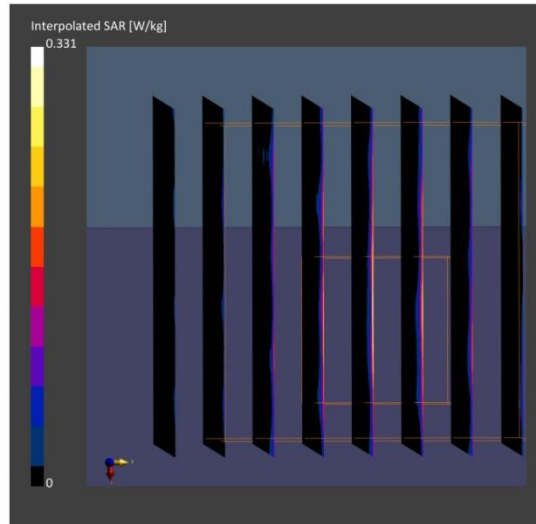
Phantom	TSL, Measured Date	Probe, Calibration Date	DAE, Calibration Date
ELI V5.0 (20deg probe tilt) - 1170	HBBL-600-10000	EX3DV4 - SN3855, 2023-09-20	DAE4 Sn1337, 2023-03-31

**Scan Setup**

	Area Scan	Zoom Scan
Grid Extents [mm]	85.0 x 272.0	22.0 x 22.0 x 22.0
Grid Steps [mm]	8.5 x 8.5	3.4 x 3.4 x 1.4
Sensor Surface [mm]	3.0	1.4
Graded Grid	Yes	Yes
Grading Ratio	1.5	1.4
MAIA	Y	Y
Surface Detection	VMS + 6p	VMS + 6p
Scan Method	Measured	Measured

**Measurement Results**

	Area Scan	Zoom Scan
Date	2023-11-11	2023-11-11
psSAR1g [W/kg]	0.054	0.070
psSAR10g [W/kg]	0.013	0.020
psAPD (1.0cm2, sq) [W/m2]		0.696
psAPD (4.0cm2, sq) [W/m2]		0.459
Power Drift [dB]	8.21	-0.34
Power Scaling	Disabled	Disabled
Scaling Factor [dB]		
TSL Correction	No correction	No correction
M2/M1 [%]		41.9
Dist 3dB Peak [mm]		6.1



**Test SKU: SKU #2 (with LUXSHARE-ICT Antenna)**  
**Antenna-Main**

**Measurement Report for 17Z90SP, Screen, U-NII-6, UID 10755 AAC, Channel 111 (6505.0MHz)**

**Device under Test Properties**

Model, Manufacturer	Dimensions [mm]	IMEI	DUT Type
17Z90SP,	379.0 x 266.0 x 10.0		Laptop

**Exposure Conditions**

Phantom Section, TSL	Position, Test Distance [mm]	Band	Group, UID	Frequency [MHz], Channel Number	Conversion Factor	TSL Conductivity [S/m]	TSL Permittivity
Flat, HSL	SCREEN, 5.00	U-NII-6	WLAN, 10755-AAC	6505.0, 111	5.25	6.08	34.0

**Hardware Setup**

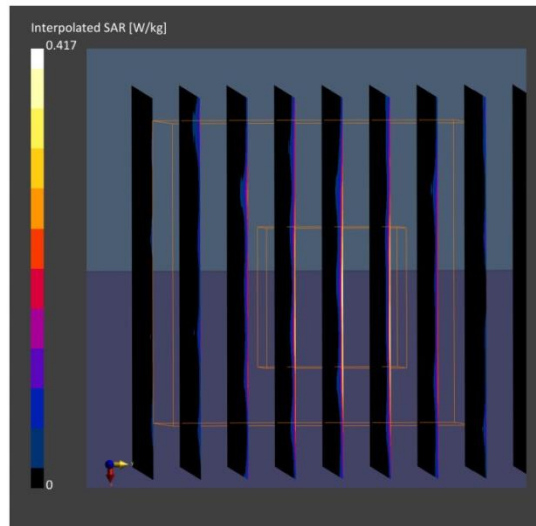
Phantom	TSL, Measured Date	Probe, Calibration Date	DAE, Calibration Date
ELI V5.0 (20deg probe tilt) - 1170	HBBL-600-10000	EX3DV4 - SN3855, 2023-09-20	DAE4 Sn1337, 2023-03-31

**Scan Setup**

	Area Scan	Zoom Scan
Grid Extents [mm]	85.0 x 272.0	22.0 x 22.0 x 22.0
Grid Steps [mm]	8.5 x 8.5	3.4 x 3.4 x 1.4
Sensor Surface [mm]	3.0	1.4
Graded Grid	Yes	Yes
Grading Ratio	1.5	1.4
MAIA	Y	Y
Surface Detection	VMS + 6p	VMS + 6p
Scan Method	Measured	Measured

**Measurement Results**

	Area Scan	Zoom Scan
Date	2023-11-11	2023-11-11
psSAR1g [W/kg]	0.060	0.063
psSAR10g [W/kg]	0.015	0.017
psAPD (1.0cm2, sq) [W/m2]		0.628
psAPD (4.0cm2, sq) [W/m2]		0.389
Power Drift [dB]	-4.94	3.01
Power Scaling	Disabled	Disabled
Scaling Factor [dB]		
TSL Correction	No correction	No correction
M2/M1 [%]		60.1
Dist 3dB Peak [mm]		5.6



● **Power Density Test Result**  
**Test SKU: SKU #1 (with INPAQ Antenna)**  
**Antenna-AUX**

**Measurement Report for 17Z90SP, Screen, U-NII-5, UID 10755 AAC, Channel 15 (6025.0MHz)**

**Device under Test Properties**

Model, Manufacturer	Dimensions [mm]	IMEI	DUT Type
, 17Z90SP	379.0 x 266.0 x 10.0		Laptop

**Exposure Conditions**

Phantom Section	Position, Test Distance [mm]	Band	Group, UID	Frequency [MHz], Channel Number	Conversion Factor
5G Air	SCREEN, 2.00	U-NII-5	WLAN, 10755-AAC	6025.0, 15	1.0

**Hardware Setup**

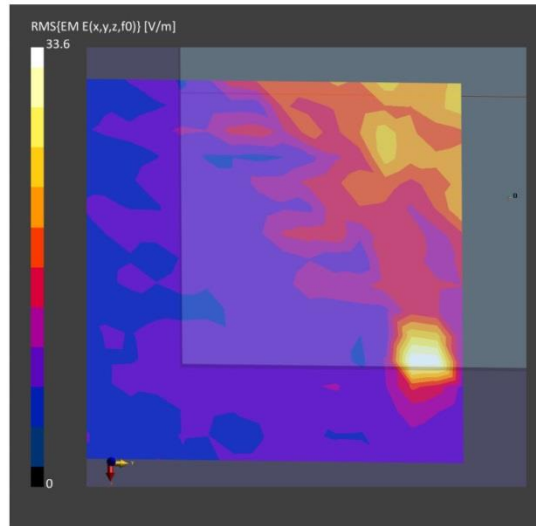
Phantom	Medium	Probe, Calibration Date	DAE, Calibration Date
mmWave- 1059	Air---	EUmmWV4 - SN9544_F1-55GHz, 2023-04-19	DAE4 Sn1337, 2023-03-31

**Scan Setup**

	5G Scan
Grid Extents [mm]	120.0 x 120.0
Grid Steps [lambda]	0.25 x 0.25
Sensor Surface [mm]	2.0
MAIA	N/A

**Measurement Results**

	5G Scan
Date	2023-11-07
Avg. Area [cm <sup>2</sup> ]	4.00
psPDn+ [W/m <sup>2</sup> ]	0.970
psPDtot+ [W/m <sup>2</sup> ]	1.02
psPDmod+ [W/m <sup>2</sup> ]	1.13
E <sub>max</sub> [V/m]	33.6
Power Drift [dB]	0.41



**Measurement Report for 17Z90SP, Screen, U-NII-5, UID 10755 AAC, Channel 47 (6185.0MHz)**

**Device under Test Properties**

Model, Manufacturer	Dimensions [mm]	IMEI	DUT Type
, 17Z90SP	379.0 x 266.0 x 10.0		Laptop

**Exposure Conditions**

Phantom Section	Position, Test Distance [mm]	Band	Group, UID	Frequency [MHz], Channel Number	Conversion Factor
5G Air	SCREEN, 2.00	U-NII-5	WLAN, 10755-AAC	6185.0, 47	1.0

**Hardware Setup**

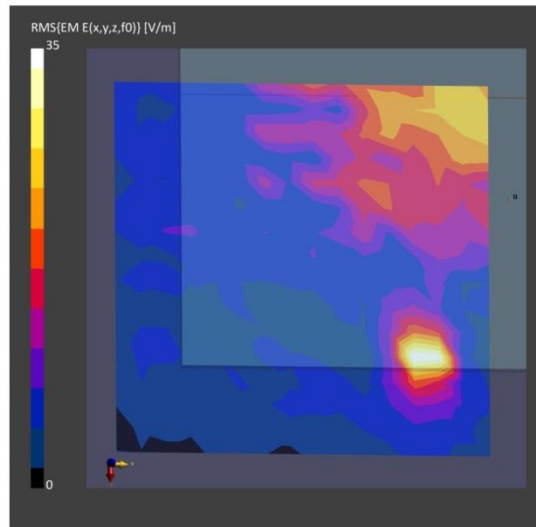
Phantom	Medium	Probe, Calibration Date	DAE, Calibration Date
mmWave- 1059	Air---	EUmmWV4 - SN9544_F1-55GHz, 2023-04-19	DAE4 Sn1337, 2023-03-31

**Scan Setup**

	5G Scan
Grid Extents [mm]	120.0 x 120.0
Grid Steps [lambda]	0.25 x 0.25
Sensor Surface [mm]	2.0
MAIA	N/A

**Measurement Results**

	5G Scan
Date	2023-11-07
Avg. Area [cm <sup>2</sup> ]	4.00
psPDn+ [W/m <sup>2</sup> ]	0.932
psPDtot+ [W/m <sup>2</sup> ]	1.05
psPDmod+ [W/m <sup>2</sup> ]	1.24
E <sub>max</sub> [V/m]	35.0
Power Drift [dB]	1.88





**Measurement Report for 17Z90SP, Screen, U-NII-6, UID 10755 AAC, Channel 111 (6505.0MHz)**

**Device under Test Properties**

Model, Manufacturer	Dimensions [mm]	IMEI	DUT Type
, 17Z90SP	379.0 x 266.0 x 10.0		Laptop

**Exposure Conditions**

Phantom Section	Position, Test Distance [mm]	Band	Group, UID	Frequency [MHz], Channel Number	Conversion Factor
5G Air	SCREEN, 2.00	U-NII-6	WLAN, 10755-AAC	6505.0, 111	1.0

**Hardware Setup**

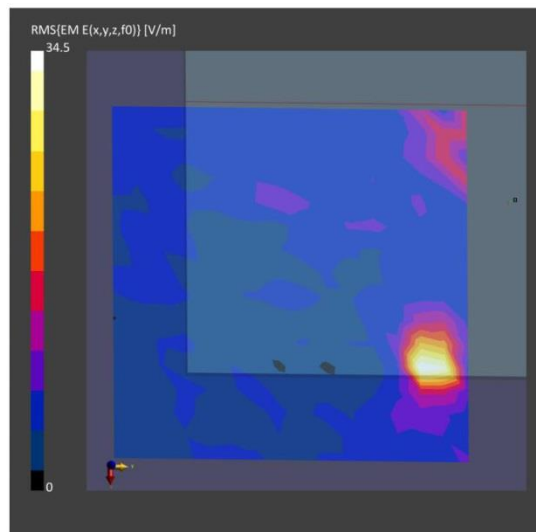
Phantom	Medium	Probe, Calibration Date	DAE, Calibration Date
mmWave- 1059	Air---	EUmmWV4 - SN9544_F1-55GHz, 2023-04-19	DAE4 Sn1337, 2023-03-31

**Scan Setup**

	5G Scan
Grid Extents [mm]	120.0 x 120.0
Grid Steps [lambda]	0.25 x 0.25
Sensor Surface [mm]	2.0
MAIA	N/A

**Measurement Results**

	5G Scan
Date	2023-11-07
Avg. Area [cm <sup>2</sup> ]	4.00
psPDn+ [W/m <sup>2</sup> ]	0.708
psPDtot+ [W/m <sup>2</sup> ]	0.782
psPDmod+ [W/m <sup>2</sup> ]	1.07
E <sub>max</sub> [V/m]	34.5
Power Drift [dB]	-1.02



**Measurement Report for 17Z90SP, Screen, U-NII-7, UID 10755 AAC, Channel 143 (6665.0MHz)**

**Device under Test Properties**

Model, Manufacturer	Dimensions [mm]	IMEI	DUT Type
, 17Z90SP	379.0 x 266.0 x 10.0		Laptop

**Exposure Conditions**

Phantom Section	Position, Test Distance [mm]	Band	Group, UID	Frequency [MHz], Channel Number	Conversion Factor
5G Air	SCREEN, 2.00	U-NII-7	WLAN, 10755-AAC	6665.0, 143	1.0

**Hardware Setup**

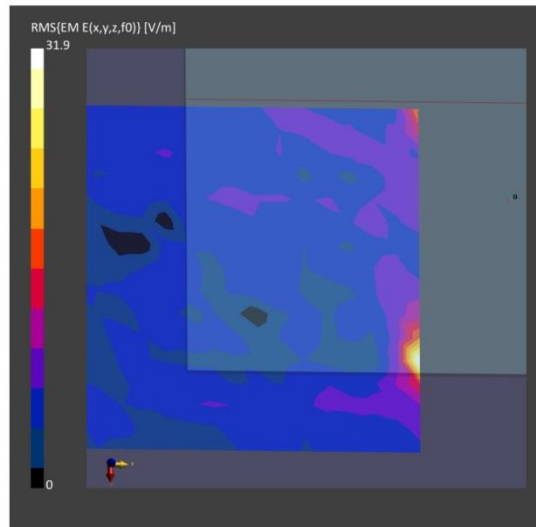
Phantom	Medium	Probe, Calibration Date	DAE, Calibration Date
mmWave- 1059	Air---	EUmmWV4 - SN9544_F1-55GHz, 2023-04-19	DAE4 Sn1337, 2023-03-31

**Scan Setup**

	5G Scan
Grid Extents [mm]	120.0 x 120.0
Grid Steps [lambda]	0.25 x 0.25
Sensor Surface [mm]	2.0
MAIA	N/A

**Measurement Results**

	5G Scan
Date	2023-11-07
Avg. Area [cm <sup>2</sup> ]	4.00
psPDn+ [W/m <sup>2</sup> ]	0.233
psPDtot+ [W/m <sup>2</sup> ]	0.285
psPDmod+ [W/m <sup>2</sup> ]	0.377
E <sub>max</sub> [V/m]	31.9
Power Drift [dB]	7.20



**Measurement Report for 17Z90SP, Screen, U-NII-8, UID 10755 AAC, Channel 207 (6985.0MHz)**

**Device under Test Properties**

Model, Manufacturer	Dimensions [mm]	IMEI	DUT Type
, 17Z90SP	379.0 x 266.0 x 10.0		Laptop

**Exposure Conditions**

Phantom Section	Position, Test Distance [mm]	Band	Group, UID	Frequency [MHz], Channel Number	Conversion Factor
5G Air	SCREEN, 2.00	U-NII-8	WLAN, 10755-AAC	6985.0, 207	1.0

**Hardware Setup**

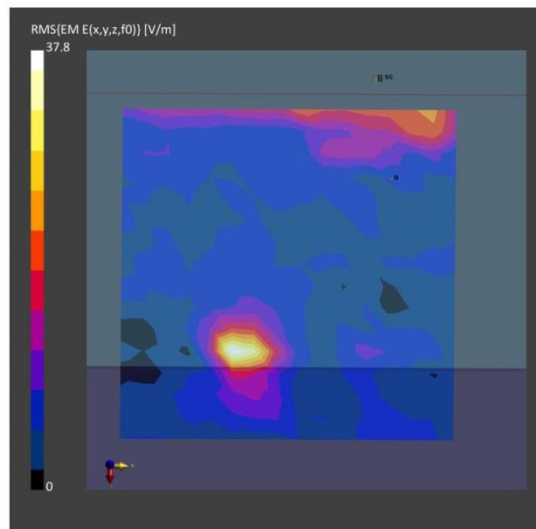
Phantom	Medium	Probe, Calibration Date	DAE, Calibration Date
mmWave- 1059	Air---	EUmmWV4 - SN9544_F1-55GHz, 2023-04-19	DAE4 Sn1337, 2023-03-31

**Scan Setup**

	5G Scan
Grid Extents [mm]	120.0 x 120.0
Grid Steps [lambda]	0.25 x 0.25
Sensor Surface [mm]	2.0
MAIA	N/A

**Measurement Results**

	5G Scan
Date	2023-11-07
Avg. Area [cm <sup>2</sup> ]	4.00
psPDn+ [W/m <sup>2</sup> ]	0.965
psPDtot+ [W/m <sup>2</sup> ]	1.07
psPDmod+ [W/m <sup>2</sup> ]	1.21
E <sub>max</sub> [V/m]	37.8
Power Drift [dB]	3.68



## Antenna-Main

### Measurement Report for 17Z90SP, Screen, U-NII-5, UID 10755 AAC, Channel 15 (6025.0MHz)

#### Device under Test Properties

Model, Manufacturer	Dimensions [mm]	IMEI	DUT Type
, 17Z90SP	379.0 x 266.0 x 10.0		Laptop

#### Exposure Conditions

Phantom Section	Position, Test Distance [mm]	Band	Group, UID	Frequency [MHz], Channel Number	Conversion Factor
5G Air	SCREEN, 2.00	U-NII-5	WLAN, 10755-AAC	6025.0, 15	1.0

#### Hardware Setup

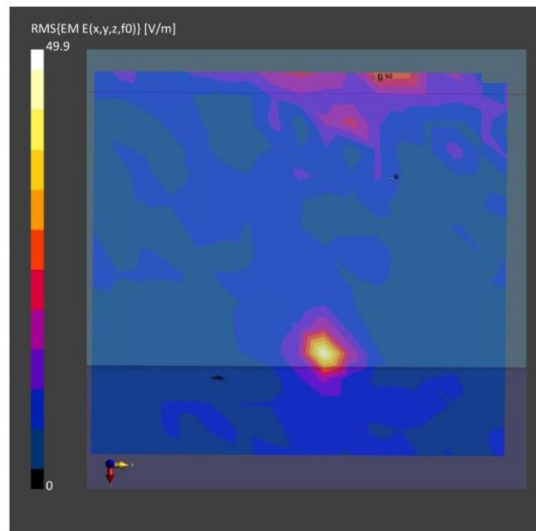
Phantom	Medium	Probe, Calibration Date	DAE, Calibration Date
mmWave- 1059	Air---	EUmmWV4 - SN9544_F1-55GHz, 2023-04-19	DAE4 Sn1337, 2023-03-31

#### Scan Setup

	5G Scan
Grid Extents [mm]	120.0 x 120.0
Grid Steps [lambda]	0.25 x 0.25
Sensor Surface [mm]	2.0
MAIA	N/A

#### Measurement Results

	5G Scan
Date	2023-11-07
Avg. Area [cm <sup>2</sup> ]	4.00
psPDn+ [W/m <sup>2</sup> ]	1.29
psPDtot+ [W/m <sup>2</sup> ]	1.30
psPDmod+ [W/m <sup>2</sup> ]	1.56
E <sub>max</sub> [V/m]	45.7
Power Drift [dB]	1.82



**Measurement Report for 17Z90SP, Screen, U-NII-5, UID 10755 AAC, Channel 47 (6185.0MHz)**

**Device under Test Properties**

Model, Manufacturer	Dimensions [mm]	IMEI	DUT Type
, 17Z90SP	379.0 x 266.0 x 10.0		Laptop

**Exposure Conditions**

Phantom Section	Position, Test Distance [mm]	Band	Group, UID	Frequency [MHz], Channel Number	Conversion Factor
5G Air	SCREEN, 2.00	U-NII-5	WLAN, 10755-AAC	6185.0, 47	1.0

**Hardware Setup**

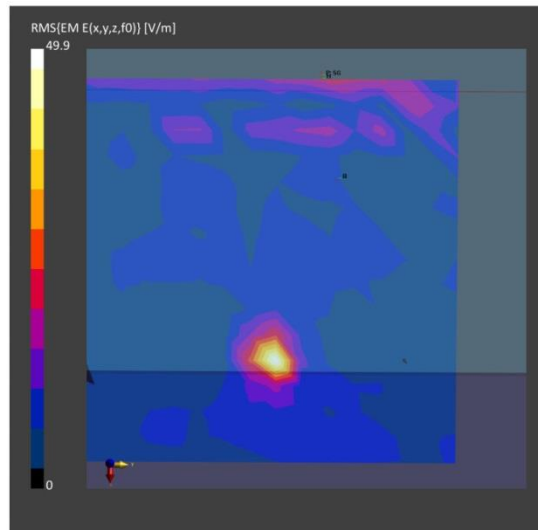
Phantom	Medium	Probe, Calibration Date	DAE, Calibration Date
mmWave- 1059	Air---	EUmmWV4 - SN9544_F1-55GHz, 2023-04-19	DAE4 Sn1337, 2023-03-31

**Scan Setup**

	5G Scan
Grid Extents [mm]	120.0 x 120.0
Grid Steps [lambda]	0.25 x 0.25
Sensor Surface [mm]	2.0
MAIA	N/A

**Measurement Results**

	5G Scan
Date	2023-11-07
Avg. Area [cm <sup>2</sup> ]	4.00
psPDn+ [W/m <sup>2</sup> ]	1.35
psPDtot+ [W/m <sup>2</sup> ]	1.43
psPDmod+ [W/m <sup>2</sup> ]	1.84
E <sub>max</sub> [V/m]	49.9
Power Drift [dB]	2.82



**Measurement Report for 17Z90SP, Screen, U-NII-6, UID 10755 AAC, Channel 111 (6505.0MHz)**

**Device under Test Properties**

Model, Manufacturer	Dimensions [mm]	IMEI	DUT Type
, 17Z90SP	379.0 x 266.0 x 10.0		Laptop

**Exposure Conditions**

Phantom Section	Position, Test Distance [mm]	Band	Group, UID	Frequency [MHz], Channel Number	Conversion Factor
5G Air	SCREEN, 2.00	U-NII-6	WLAN, 10755-AAC	6505.0, 111	1.0

**Hardware Setup**

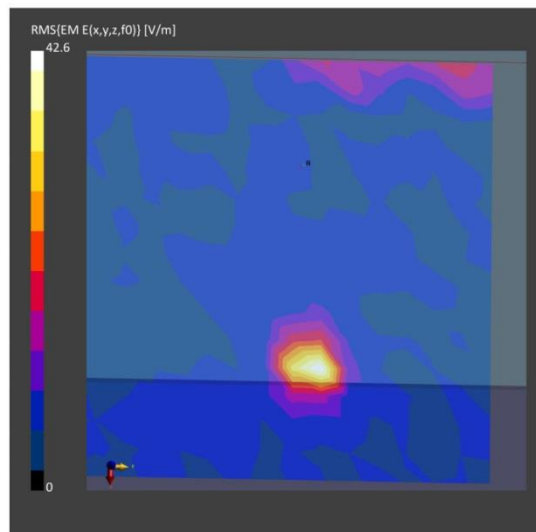
Phantom	Medium	Probe, Calibration Date	DAE, Calibration Date
mmWave- 1059	Air---	EUmmWV4 - SN9544_F1-55GHz, 2023-04-19	DAE4 Sn1337, 2023-03-31

**Scan Setup**

	5G Scan
Grid Extents [mm]	120.0 x 120.0
Grid Steps [lambda]	0.25 x 0.25
Sensor Surface [mm]	2.0
MAIA	N/A

**Measurement Results**

	5G Scan
Date	2023-11-07
Avg. Area [cm <sup>2</sup> ]	4.00
psPDn+ [W/m <sup>2</sup> ]	1.07
psPDtot+ [W/m <sup>2</sup> ]	1.21
psPDmod+ [W/m <sup>2</sup> ]	1.47
E <sub>max</sub> [V/m]	42.6
Power Drift [dB]	3.85



**Measurement Report for 17Z90SP, Screen, U-NII-7, UID 10755 AAC, Channel 143 (6665.0MHz)**

**Device under Test Properties**

Model, Manufacturer	Dimensions [mm]	IMEI	DUT Type
, 17Z90SP	379.0 x 266.0 x 10.0		Laptop

**Exposure Conditions**

Phantom Section	Position, Test Distance [mm]	Band	Group, UID	Frequency [MHz], Channel Number	Conversion Factor
5G Air	SCREEN, 2.00	U-NII-7	WLAN, 10755-AAC	6665.0, 143	1.0

**Hardware Setup**

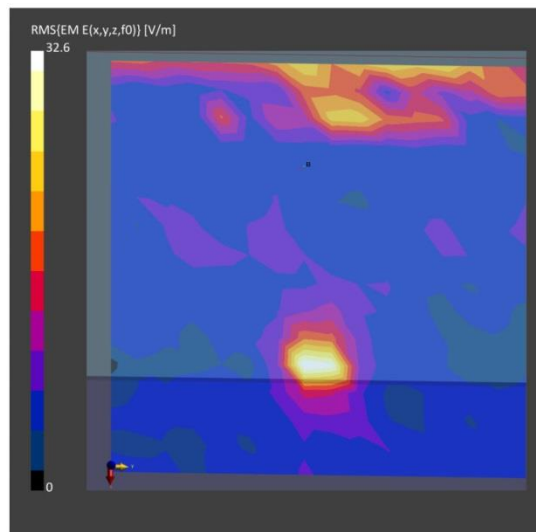
Phantom	Medium	Probe, Calibration Date	DAE, Calibration Date
mmWave- 1059	Air---	EUmmWV4 - SN9544_F1-55GHz, 2023-04-19	DAE4 Sn1337, 2023-03-31

**Scan Setup**

	5G Scan
Grid Extents [mm]	120.0 x 120.0
Grid Steps [lambda]	0.25 x 0.25
Sensor Surface [mm]	2.0
MAIA	N/A

**Measurement Results**

	5G Scan
Date	2023-11-07
Avg. Area [cm <sup>2</sup> ]	4.00
psPDn+ [W/m <sup>2</sup> ]	0.707
psPDtot+ [W/m <sup>2</sup> ]	0.795
psPDmod+ [W/m <sup>2</sup> ]	0.954
E <sub>max</sub> [V/m]	32.6
Power Drift [dB]	2.27



**Measurement Report for 17Z90SP, Screen, U-NII-8, UID 10755 AAC, Channel 207 (6985.0MHz)**

**Device under Test Properties**

Model, Manufacturer	Dimensions [mm]	IMEI	DUT Type
, 17Z90SP	379.0 x 266.0 x 10.0		Laptop

**Exposure Conditions**

Phantom Section	Position, Test Distance [mm]	Band	Group, UID	Frequency [MHz], Channel Number	Conversion Factor
5G Air	SCREEN, 2.00	U-NII-8	WLAN, 10755-AAC	6985.0, 207	1.0

**Hardware Setup**

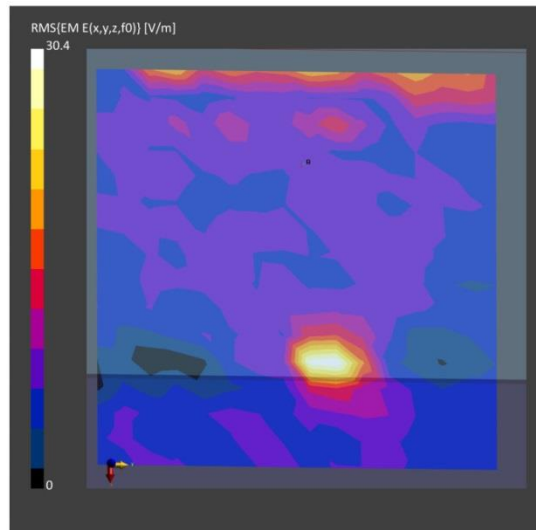
Phantom	Medium	Probe, Calibration Date	DAE, Calibration Date
mmWave- 1059	Air---	EUmmWV4 - SN9544_F1-55GHz, 2023-04-19	DAE4 Sn1337, 2023-03-31

**Scan Setup**

	5G Scan
Grid Extents [mm]	120.0 x 120.0
Grid Steps [lambda]	0.25 x 0.25
Sensor Surface [mm]	2.0
MAIA	N/A

**Measurement Results**

	5G Scan
Date	2023-11-07
Avg. Area [cm <sup>2</sup> ]	4.00
psPDn+ [W/m <sup>2</sup> ]	0.456
psPDtot+ [W/m <sup>2</sup> ]	0.553
psPDmod+ [W/m <sup>2</sup> ]	0.653
E <sub>max</sub> [V/m]	30.5
Power Drift [dB]	-2.29





**Test SKU: SKU #1 (with LUXSHARE-ICT Antenna)**  
**Antenna-AUX**

**Measurement Report for 17Z90SP, SCREEN, U-NII-5, UID 10755 AAC, Channel 15 (6025.0MHz)**

**Device under Test Properties**

Model, Manufacturer	Dimensions [mm]	IMEI	DUT Type
, 17Z90SP	379.0 x 266.0 x 10.0		Laptop

**Exposure Conditions**

Phantom Section	Position, Test Distance [mm]	Band	Group, UID	Frequency [MHz], Channel Number	Conversion Factor
5G Air	SCREEN, 2.00	U-NII-5	WLAN, 10755-AAC	6025.0, 15	1.0

**Hardware Setup**

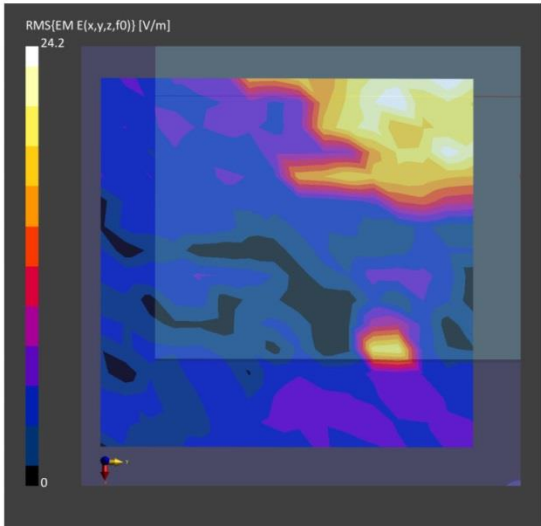
Phantom	Medium	Probe, Calibration Date	DAE, Calibration Date
mmWave- 1059	Air---	EUmmWV4 - SN9544_F1-55GHz, 2023-04-19	DAE4 Sn1337, 2023-03-31

**Scan Setup**

	5G Scan
Grid Extents [mm]	120.0 x 120.0
Grid Steps [lambda]	0.25 x 0.25
Sensor Surface [mm]	2.0
MAIA	N/A

**Measurement Results**

	5G Scan
Date	2023-11-06
Avg. Area [cm <sup>2</sup> ]	4.00
psPDn+ [W/m <sup>2</sup> ]	0.796
psPDtot+ [W/m <sup>2</sup> ]	0.835
psPDmod+ [W/m <sup>2</sup> ]	1.03
E <sub>max</sub> [V/m]	24.2
Power Drift [dB]	-2.75



**Measurement Report for 17Z90SP, Screen, U-NII-5, UID 10755 AAC, Channel 47 (6185.0MHz)**

**Device under Test Properties**

Model, Manufacturer	Dimensions [mm]	IMEI	DUT Type
17Z90SP	379.0 x 266.0 x 10.0		Laptop

**Exposure Conditions**

Phantom Section	Position, Test Distance [mm]	Band	Group, UID	Frequency [MHz], Channel Number	Conversion Factor
5G Air	SCREEN, 2.00	U-NII-5	WLAN, 10755-AAC	6185.0, 47	1.0

**Hardware Setup**

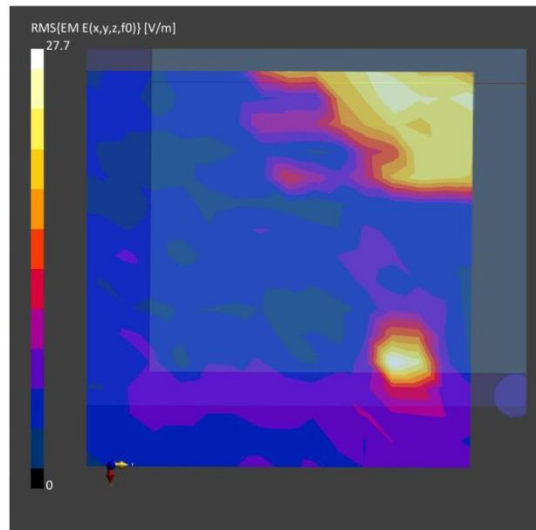
Phantom	Medium	Probe, Calibration Date	DAE, Calibration Date
mmWave- 1059	Air---	EUmmWV4 - SN9544_F1-55GHz, 2023-04-19	DAE4 Sn1337, 2023-03-31

**Scan Setup**

	5G Scan
Grid Extents [mm]	120.0 x 120.0
Grid Steps [lambda]	0.25 x 0.25
Sensor Surface [mm]	2.0
MAIA	N/A

**Measurement Results**

	5G Scan
Date	2023-11-06
Avg. Area [cm <sup>2</sup> ]	4.00
psPDn+ [W/m <sup>2</sup> ]	0.891
psPDtot+ [W/m <sup>2</sup> ]	1.08
psPDmod+ [W/m <sup>2</sup> ]	1.19
E <sub>max</sub> [V/m]	27.7
Power Drift [dB]	4.41



**Measurement Report for 17Z90SP, Screen, U-NII-6, UID 10755 AAC, Channel 111 (6505.0MHz)**

**Device under Test Properties**

Model, Manufacturer	Dimensions [mm]	IMEI	DUT Type
, 17Z90SP	379.0 x 266.0 x 10.0		Laptop

**Exposure Conditions**

Phantom Section	Position, Test Distance [mm]	Band	Group, UID	Frequency [MHz], Channel Number	Conversion Factor
5G Air	SCREEN, 2.00	U-NII-6	WLAN, 10755-AAC	6505.0, 111	1.0

**Hardware Setup**

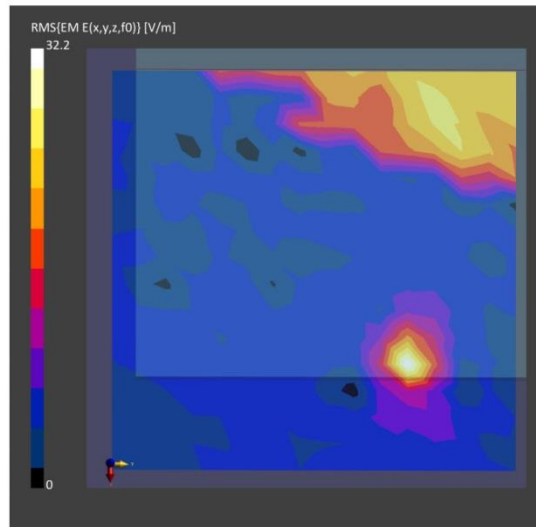
Phantom	Medium	Probe, Calibration Date	DAE, Calibration Date
mmWave- 1059	Air---	EUmmWV4 - SN9544_F1-55GHz, 2023-04-19	DAE4 Sn1337, 2023-03-31

**Scan Setup**

	5G Scan
Grid Extents [mm]	120.0 x 120.0
Grid Steps [lambda]	0.25 x 0.25
Sensor Surface [mm]	2.0
MAIA	N/A

**Measurement Results**

	5G Scan
Date	2023-11-06
Avg. Area [cm <sup>2</sup> ]	4.00
psPDn+ [W/m <sup>2</sup> ]	0.870
psPDtot+ [W/m <sup>2</sup> ]	0.921
psPDmod+ [W/m <sup>2</sup> ]	1.21
E <sub>max</sub> [V/m]	32.2
Power Drift [dB]	1.68



**Measurement Report for 17Z90SP, Screen, U-NII-7, UID 10755 AAC, Channel 143 (6665.0MHz)**

**Device under Test Properties**

Model, Manufacturer	Dimensions [mm]	IMEI	DUT Type
, 17Z90SP	379.0 x 266.0 x 10.0		Laptop

**Exposure Conditions**

Phantom Section	Position, Test Distance [mm]	Band	Group, UID	Frequency [MHz], Channel Number	Conversion Factor
5G Air	SCREEN, 2.00	U-NII-7	WLAN, 10755-AAC	6665.0, 143	1.0

**Hardware Setup**

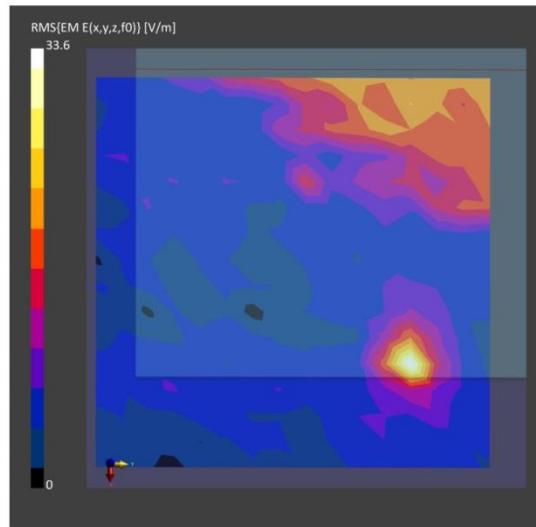
Phantom	Medium	Probe, Calibration Date	DAE, Calibration Date
mmWave- 1059	Air---	EUmmWV4 - SN9544_F1-55GHz, 2023-04-19	DAE4 Sn1337, 2023-03-31

**Scan Setup**

	5G Scan
Grid Extents [mm]	120.0 x 120.0
Grid Steps [lambda]	0.25 x 0.25
Sensor Surface [mm]	2.0
MAIA	N/A

**Measurement Results**

	5G Scan
Date	2023-11-06
Avg. Area [cm <sup>2</sup> ]	4.00
psPDn+ [W/m <sup>2</sup> ]	0.816
psPDtot+ [W/m <sup>2</sup> ]	0.842
psPDmod+ [W/m <sup>2</sup> ]	0.970
E <sub>max</sub> [V/m]	33.6
Power Drift [dB]	3.46



**Measurement Report for 17Z90SP, Screen, U-NII-8, UID 10755 AAC, Channel 207 (6985.0MHz)**

**Device under Test Properties**

Model, Manufacturer	Dimensions [mm]	IMEI	DUT Type
, 17Z90SP	379.0 x 266.0 x 10.0		Laptop

**Exposure Conditions**

Phantom Section	Position, Test Distance [mm]	Band	Group, UID	Frequency [MHz], Channel Number	Conversion Factor
5G Air	SCREEN, 2.00	U-NII-8	WLAN, 10755-AAC	6985.0, 207	1.0

**Hardware Setup**

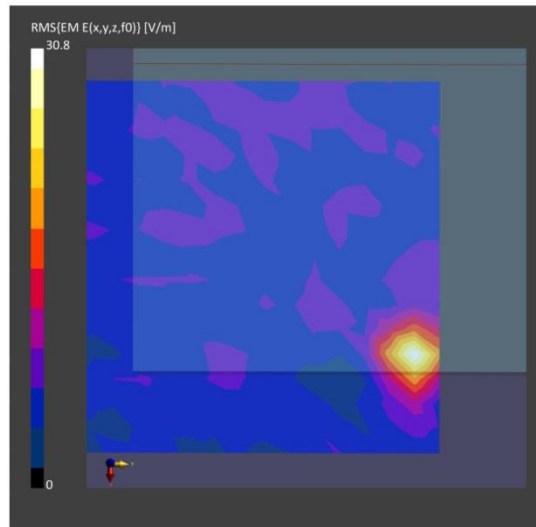
Phantom	Medium	Probe, Calibration Date	DAE, Calibration Date
mmWave- 1059	Air---	EUmmWV4 - SN9544_F1-55GHz, 2023-04-19	DAE4 Sn1337, 2023-03-31

**Scan Setup**

	5G Scan
Grid Extents [mm]	120.0 x 120.0
Grid Steps [lambda]	0.25 x 0.25
Sensor Surface [mm]	2.0
MAIA	N/A

**Measurement Results**

	5G Scan
Date	2023-11-06
Avg. Area [cm <sup>2</sup> ]	4.00
psPDn+ [W/m <sup>2</sup> ]	0.492
psPDtot+ [W/m <sup>2</sup> ]	0.580
psPDmod+ [W/m <sup>2</sup> ]	0.689
E <sub>max</sub> [V/m]	30.8
Power Drift [dB]	1.88



## Antenna-Main

### Measurement Report for 17Z90SP, Screen, U-NII-5, UID 10755 AAC, Channel 15 (6025.0MHz)

#### Device under Test Properties

Model, Manufacturer	Dimensions [mm]	IMEI	DUT Type
, 17Z90SP	379.0 x 266.0 x 10.0		Laptop

#### Exposure Conditions

Phantom Section	Position, Test Distance [mm]	Band	Group, UID	Frequency [MHz], Channel Number	Conversion Factor
5G Air	SCREEN, 2.00	U-NII-5	WLAN, 10755-AAC	6025.0, 15	1.0

#### Hardware Setup

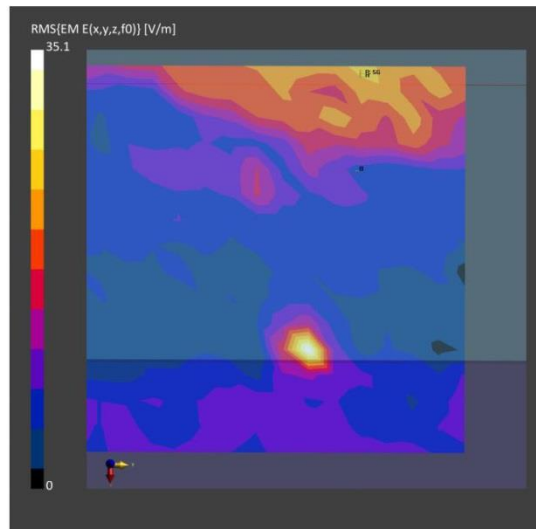
Phantom	Medium	Probe, Calibration Date	DAE, Calibration Date
mmWave- 1059	Air---	EUmWV4 - SN9544_F1-55GHz, 2023-04-19	DAE4 Sn1337, 2023-03-31

#### Scan Setup

	5G Scan
Grid Extents [mm]	120.0 x 120.0
Grid Steps [lambda]	0.25 x 0.25
Sensor Surface [mm]	2.0
MAIA	N/A

#### Measurement Results

	5G Scan
Date	2023-11-06
Avg. Area [cm <sup>2</sup> ]	4.00
psPDn+ [W/m <sup>2</sup> ]	0.632
psPDtot+ [W/m <sup>2</sup> ]	0.848
psPDmod+ [W/m <sup>2</sup> ]	1.08
E <sub>max</sub> [V/m]	35.1
Power Drift [dB]	-0.26



**Measurement Report for 17Z90SP, Screen, U-NII-5, UID 10755 AAC, Channel 47 (6185.0MHz)**

**Device under Test Properties**

Model, Manufacturer	Dimensions [mm]	IMEI	DUT Type
, 17Z90SP	379.0 x 266.0 x 10.0		Laptop

**Exposure Conditions**

Phantom Section	Position, Test Distance [mm]	Band	Group, UID	Frequency [MHz], Channel Number	Conversion Factor
5G Air	SCREEN, 2.00	U-NII-5	WLAN, 10755-AAC	6185.0, 47	1.0

**Hardware Setup**

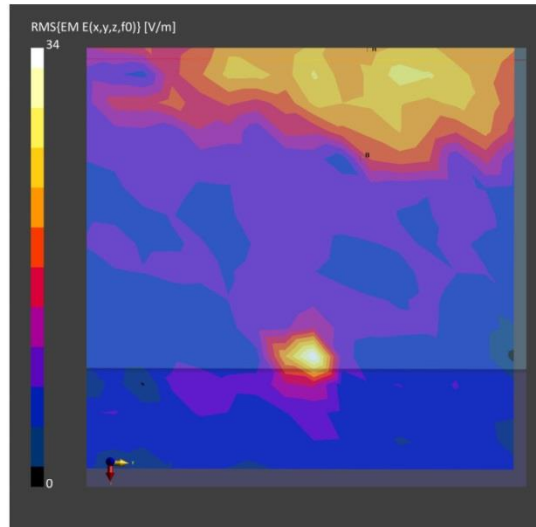
Phantom	Medium	Probe, Calibration Date	DAE, Calibration Date
mmWave- 1059	Air---	EUmmWV4 - SN9544_F1-55GHz, 2023-04-19	DAE4 Sn1337, 2023-03-31

**Scan Setup**

	5G Scan
Grid Extents [mm]	120.0 x 120.0
Grid Steps [lambda]	0.25 x 0.25
Sensor Surface [mm]	2.0
MAIA	N/A

**Measurement Results**

	5G Scan
Date	2023-11-06
Avg. Area [cm <sup>2</sup> ]	4.00
psPDn+ [W/m <sup>2</sup> ]	0.969
psPDtot+ [W/m <sup>2</sup> ]	1.12
psPDmod+ [W/m <sup>2</sup> ]	1.28
E <sub>max</sub> [V/m]	34.0
Power Drift [dB]	-1.59



**Measurement Report for 17Z90SP, Screen, U-NII-6, UID 10755 AAC, Channel 111 (6505.0MHz)**

**Device under Test Properties**

Model, Manufacturer	Dimensions [mm]	IMEI	DUT Type
, 17Z90SP	379.0 x 266.0 x 10.0		Laptop

**Exposure Conditions**

Phantom Section	Position, Test Distance [mm]	Band	Group, UID	Frequency [MHz], Channel Number	Conversion Factor
5G Air	SCREEN, 2.00	U-NII-6	WLAN, 10755-AAC	6505.0, 111	1.0

**Hardware Setup**

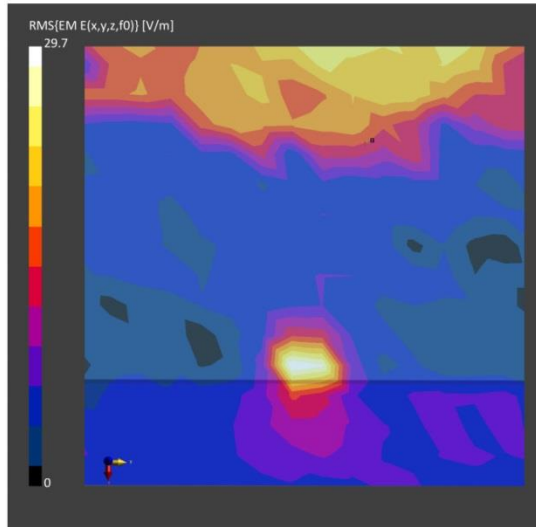
Phantom	Medium	Probe, Calibration Date	DAE, Calibration Date
mmWave- 1059	Air---	EUmmWV4 - SN9544_F1-55GHz, 2023-04-19	DAE4 Sn1337, 2023-03-31

**Scan Setup**

	5G Scan
Grid Extents [mm]	120.0 x 120.0
Grid Steps [lambda]	0.25 x 0.25
Sensor Surface [mm]	2.0
MAIA	N/A

**Measurement Results**

	5G Scan
Date	2023-11-06
Avg. Area [cm <sup>2</sup> ]	4.00
psPDn+ [W/m <sup>2</sup> ]	0.579
psPDtot+ [W/m <sup>2</sup> ]	0.761
psPDmod+ [W/m <sup>2</sup> ]	1.12
E <sub>max</sub> [V/m]	29.7
Power Drift [dB]	-0.82





**Measurement Report for 17Z90SP, Screen, U-NII-7, UID 10755 AAC, Channel 143 (6665.0MHz)**

**Device under Test Properties**

Model, Manufacturer	Dimensions [mm]	IMEI	DUT Type
, 17Z90SP	379.0 x 266.0 x 10.0		Laptop

**Exposure Conditions**

Phantom Section	Position, Test Distance [mm]	Band	Group, UID	Frequency [MHz], Channel Number	Conversion Factor
5G Air	SCREEN, 2.00	U-NII-7	WLAN, 10755-AAC	6665.0, 143	1.0

**Hardware Setup**

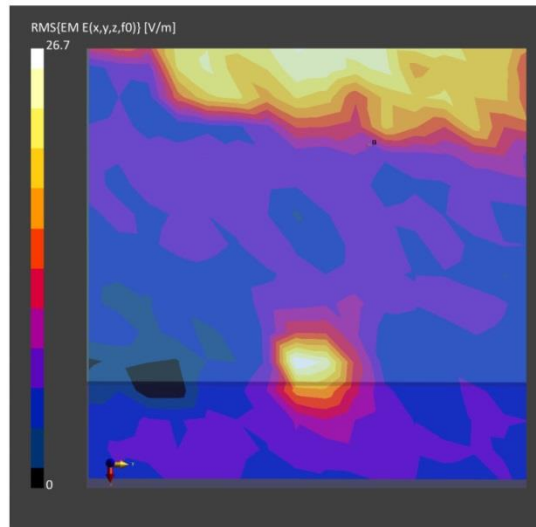
Phantom	Medium	Probe, Calibration Date	DAE, Calibration Date
mmWave- 1059	Air---	EUmmWV4 - SN9544_F1-55GHz, 2023-04-19	DAE4 Sn1337, 2023-03-31

**Scan Setup**

	5G Scan
Grid Extents [mm]	120.0 x 120.0
Grid Steps [lambda]	0.25 x 0.25
Sensor Surface [mm]	2.0
MAIA	N/A

**Measurement Results**

	5G Scan
Date	2023-11-06
Avg. Area [cm <sup>2</sup> ]	4.00
psPDn+ [W/m <sup>2</sup> ]	0.860
psPDtot+ [W/m <sup>2</sup> ]	0.905
psPDmod+ [W/m <sup>2</sup> ]	1.02
E <sub>max</sub> [V/m]	26.7
Power Drift [dB]	1.37



**Measurement Report for 17Z90SP, Screen, U-NII-8, UID 10755 AAC, Channel 207 (6985.0MHz)**

**Device under Test Properties**

Model, Manufacturer	Dimensions [mm]	IMEI	DUT Type
, 17Z90SP	379.0 x 266.0 x 10.0		Laptop

**Exposure Conditions**

Phantom Section	Position, Test Distance [mm]	Band	Group, UID	Frequency [MHz], Channel Number	Conversion Factor
5G Air	SCREEN, 2.00	U-NII-8	WLAN, 10755-AAC	6985.0, 207	1.0

**Hardware Setup**

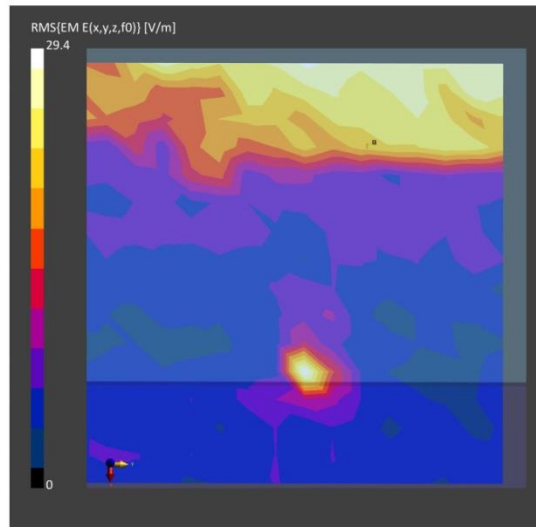
Phantom	Medium	Probe, Calibration Date	DAE, Calibration Date
mmWave- 1059	Air---	EUmmWV4 - SN9544_F1-55GHz, 2023-04-19	DAE4 Sn1337, 2023-03-31

**Scan Setup**

	5G Scan
Grid Extents [mm]	120.0 x 120.0
Grid Steps [lambda]	0.25 x 0.25
Sensor Surface [mm]	2.0
MAIA	N/A

**Measurement Results**

	5G Scan
Date	2023-11-06
Avg. Area [cm <sup>2</sup> ]	4.00
psPDn+ [W/m <sup>2</sup> ]	0.757
psPDtot+ [W/m <sup>2</sup> ]	1.02
psPDmod+ [W/m <sup>2</sup> ]	1.35
E <sub>max</sub> [V/m]	29.4
Power Drift [dB]	-0.07



● **Worst Case For Power Density Test Result**  
**Test SKU: SKU #2 (with INPAQ Antenna)**  
**Antenna-AUX**

**Measurement Report for 17Z90SP, Screen, U-NII-5, UID 10755 AAC, Channel 47 (6185.0MHz)**

**Device under Test Properties**

Model, Manufacturer	Dimensions [mm]	IMEI	DUT Type
, 17Z90SP	379.0 x 266.0 x 10.0		Laptop

**Exposure Conditions**

Phantom Section	Position, Test Distance [mm]	Band	Group, UID	Frequency [MHz], Channel Number	Conversion Factor
5G Air	SCREEN, 2.00	U-NII-5	WLAN, 10755-AAC	6185.0, 47	1.0

**Hardware Setup**

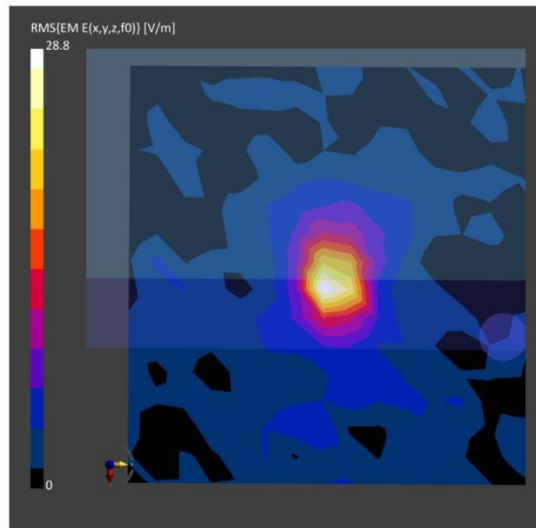
Phantom	Medium	Probe, Calibration Date	DAE, Calibration Date
mmWave- 1059	--Air-	EUmmWV4 - SN9544_F1-55GHz, 2023-04-19	DAE4 Sn1337, 2023-03-31

**Scan Setup**

	5G Scan
Grid Extents [mm]	120.0 x 120.0
Grid Steps [lambda]	0.25 x 0.25
Sensor Surface [mm]	2.0
MAIA	N/A

**Measurement Results**

	5G Scan
Date	2023-11-10
Avg. Area [cm <sup>2</sup> ]	4.00
psPDn+ [W/m <sup>2</sup> ]	0.690
psPDtot+ [W/m <sup>2</sup> ]	0.761
psPDmod+ [W/m <sup>2</sup> ]	0.904
E <sub>max</sub> [V/m]	28.8
Power Drift [dB]	n/a



## Antenna-Main

### Measurement Report for 17Z90SP, Screen, U-NII-5, UID 10755 AAC, Channel 47 (6185.0MHz)

#### Device under Test Properties

Model, Manufacturer	Dimensions [mm]	IMEI	DUT Type
, 17Z90SP	379.0 x 266.0 x 10.0		Laptop

#### Exposure Conditions

Phantom Section	Position, Test Distance [mm]	Band	Group, UID	Frequency [MHz], Channel Number	Conversion Factor
5G Air	SCREEN, 2.00	U-NII-5	WLAN, 10755-AAC	6185.0, 47	1.0

#### Hardware Setup

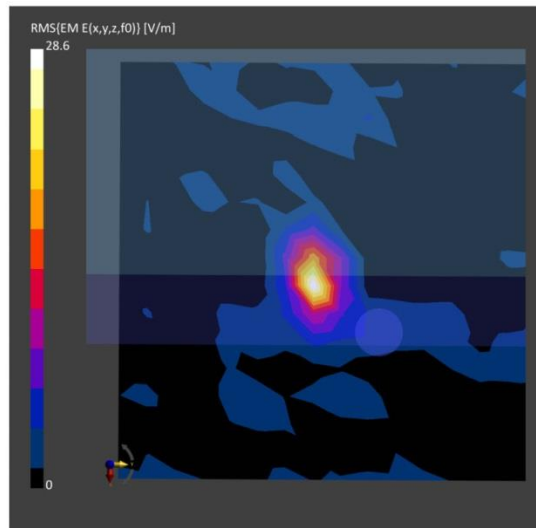
Phantom	Medium	Probe, Calibration Date	DAE, Calibration Date
mmWave- 1059	Air---	EUmmWV4 - SN9544_F1-55GHz, 2023-04-19	DAE4 Sn1337, 2023-03-31

#### Scan Setup

	5G Scan
Grid Extents [mm]	120.0 x 120.0
Grid Steps [lambda]	0.25 x 0.25
Sensor Surface [mm]	2.0
MAIA	N/A

#### Measurement Results

	5G Scan
Date	2023-11-10
Avg. Area [cm <sup>2</sup> ]	4.00
psPDn+ [W/m <sup>2</sup> ]	0.297
psPDtot+ [W/m <sup>2</sup> ]	0.406
psPDmod+ [W/m <sup>2</sup> ]	0.489
E <sub>max</sub> [V/m]	28.6
Power Drift [dB]	-0.07



**Test SKU: SKU #2 (with LUXSHARE-ICT Antenna)**  
**Antenna-AUX**

Measurement Report for 17Z90SP, Screen, U-NII-5, UID 10755 AAC, Channel 47 (6185.0MHz)

**Device under Test Properties**

Model, Manufacturer	Dimensions [mm]	IMEI	DUT Type
, 17Z90SP	379.0 x 266.0 x 10.0		Laptop

**Exposure Conditions**

Phantom Section	Position, Test Distance [mm]	Band	Group, UID	Frequency [MHz], Channel Number	Conversion Factor
5G Air	SCREEN, 2.00	U-NII-5	WLAN, 10755-AAC	6185.0, 47	1.0

**Hardware Setup**

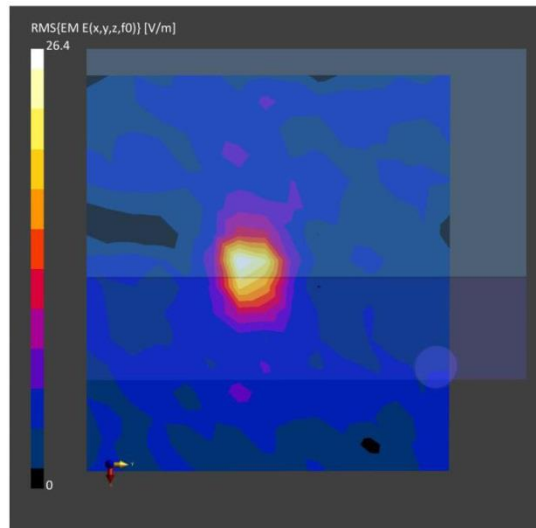
Phantom	Medium	Probe, Calibration Date	DAE, Calibration Date
mmWave- 1059	Air---	EUmmWV4 - SN9544_F1-55GHz, 2023-04-19	DAE4 Sn1337, 2023-03-31

**Scan Setup**

	5G Scan
Grid Extents [mm]	120.0 x 120.0
Grid Steps [lambda]	0.25 x 0.25
Sensor Surface [mm]	2.0
MAIA	N/A

**Measurement Results**

	5G Scan
Date	2023-11-10
Avg. Area [cm <sup>2</sup> ]	4.00
psPDn+ [W/m <sup>2</sup> ]	0.313
psPDtot+ [W/m <sup>2</sup> ]	0.371
psPDmod+ [W/m <sup>2</sup> ]	0.558
E <sub>max</sub> [V/m]	26.4
Power Drift [dB]	0.09



## Antenna-Main

### Measurement Report for 17Z90SP, Screen, U-NII-5, UID 10755 AAC, Channel 47 (6185.0MHz)

#### Device under Test Properties

Model, Manufacturer	Dimensions [mm]	IMEI	DUT Type
, 17Z90SP	379.0 x 266.0 x 10.0		Laptop

#### Exposure Conditions

Phantom Section	Position, Test Distance [mm]	Band	Group, UID	Frequency [MHz], Channel Number	Conversion Factor
5G Air	SCREEN, 2.00	U-NII-5	WLAN, 10755-AAC	6185.0, 47	1.0

#### Hardware Setup

Phantom	Medium	Probe, Calibration Date	DAE, Calibration Date
mmWave- 1059	Air---	EUmmWV4 - SN9544_F1-55GHz, 2023-04-19	DAE4 Sn1337, 2023-03-31

#### Scan Setup

	5G Scan
Grid Extents [mm]	120.0 x 120.0
Grid Steps [lambda]	0.25 x 0.25
Sensor Surface [mm]	2.0
MAIA	N/A

#### Measurement Results

	5G Scan
Date	2023-11-10
Avg. Area [cm <sup>2</sup> ]	4.00
psPDn+ [W/m <sup>2</sup> ]	0.649
psPDtot+ [W/m <sup>2</sup> ]	0.848
psPDmod+ [W/m <sup>2</sup> ]	0.973
E <sub>max</sub> [V/m]	31.2
Power Drift [dB]	0.07

