

EUT Internal Photos

*Figure 13
General Appearance (White), Internal View*



*Figure 14
General Appearance (Black), Internal View*



Figure 15
Internal View (Removed Cover, with GM Main Board)

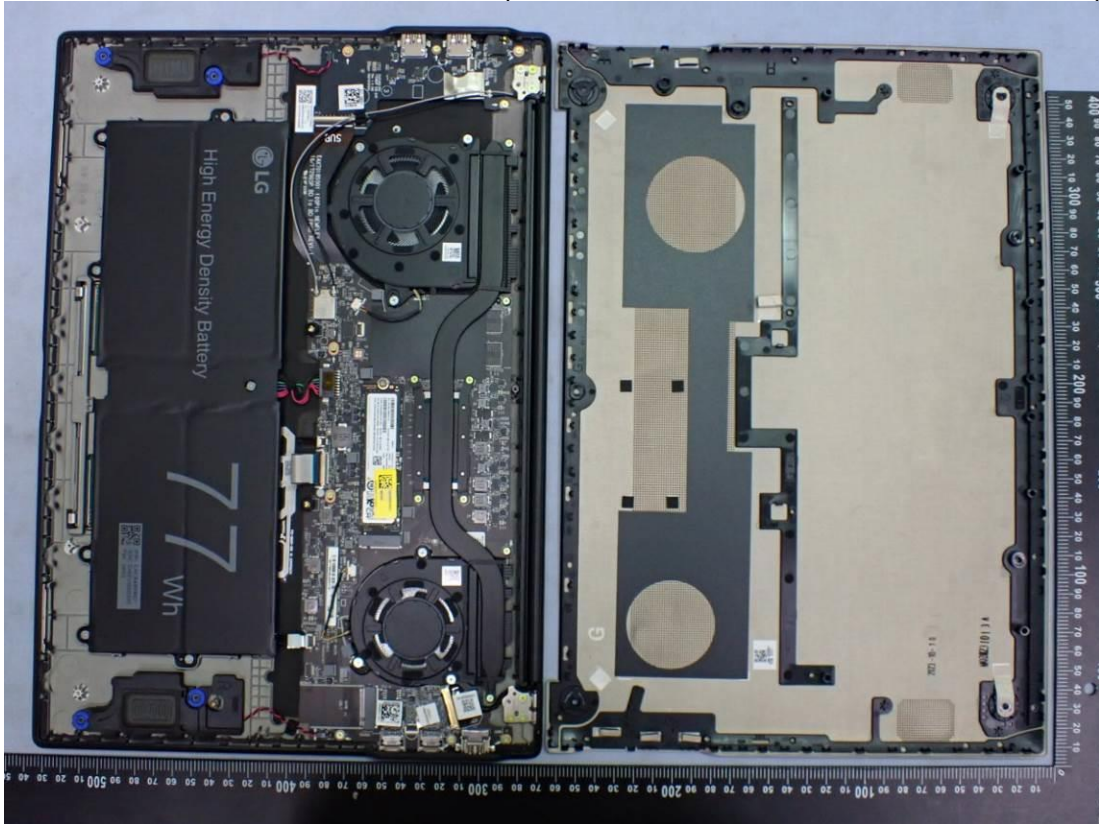


Figure 16
Internal View (Removed Components, with GM Main Board)

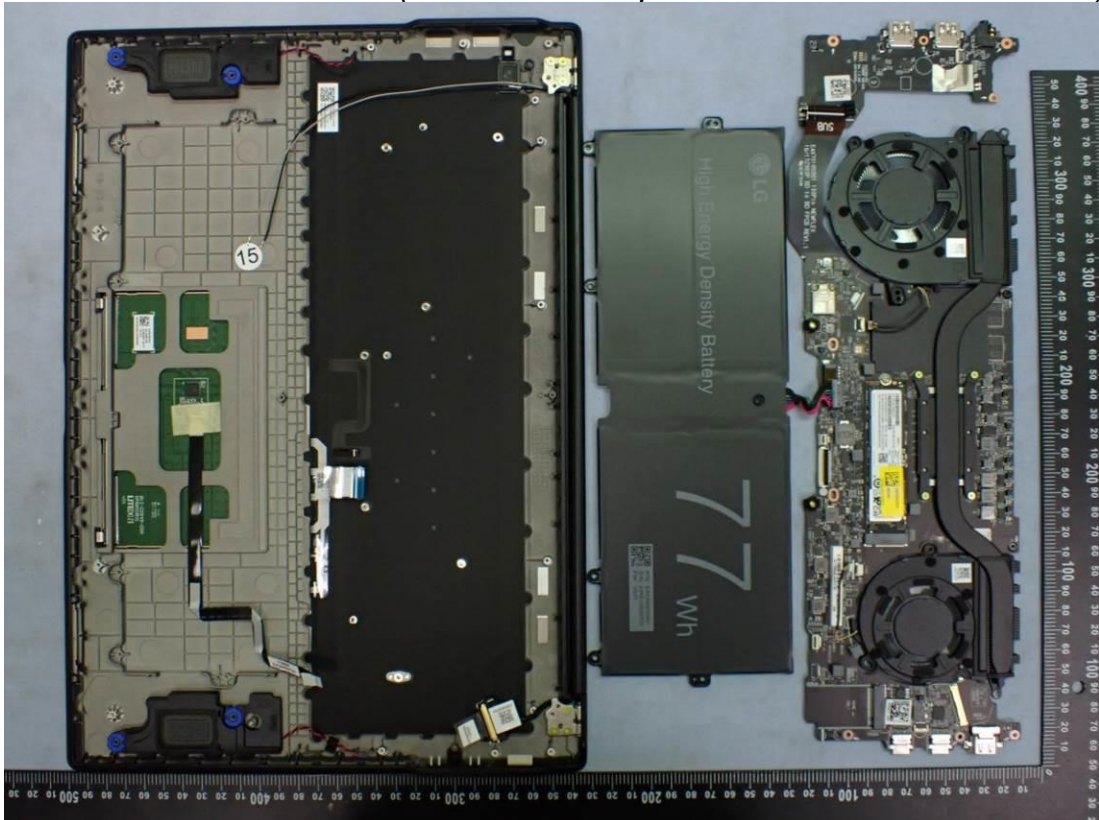


Figure 17
Internal View (Removed Cover, with PM Main Board)

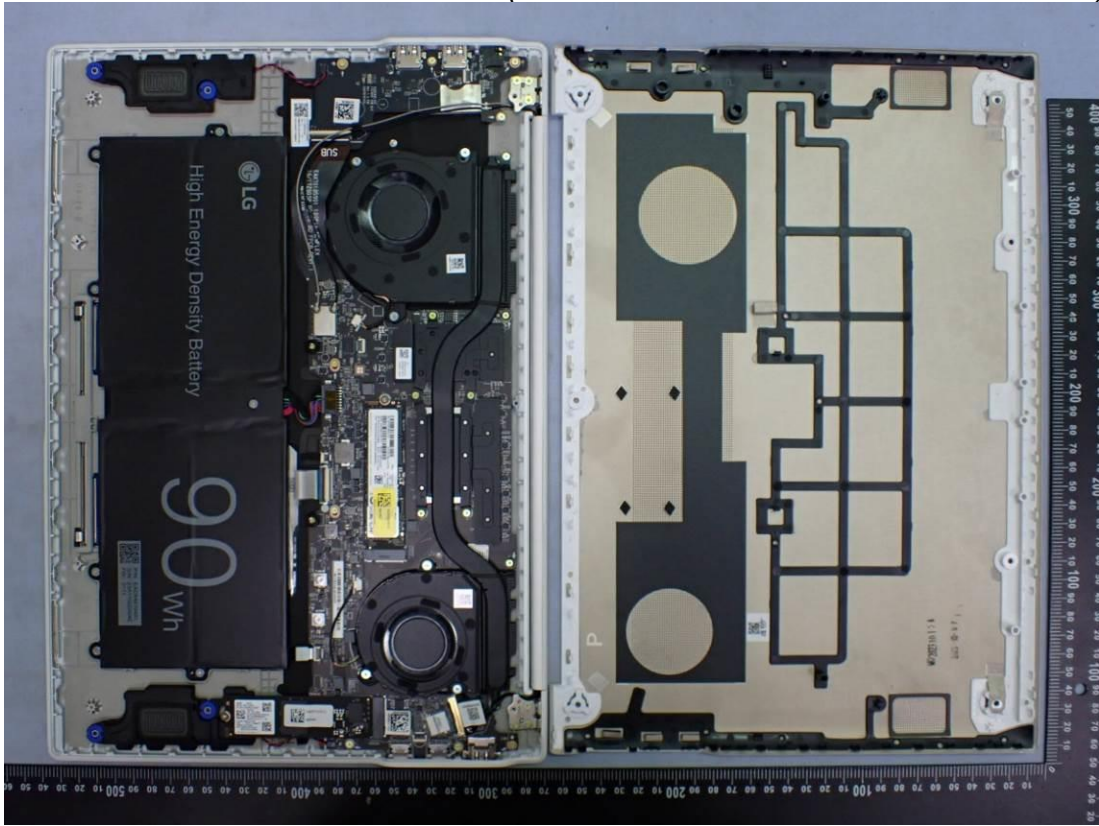


Figure 18
Internal View (Removed Components, with PM Main Board)

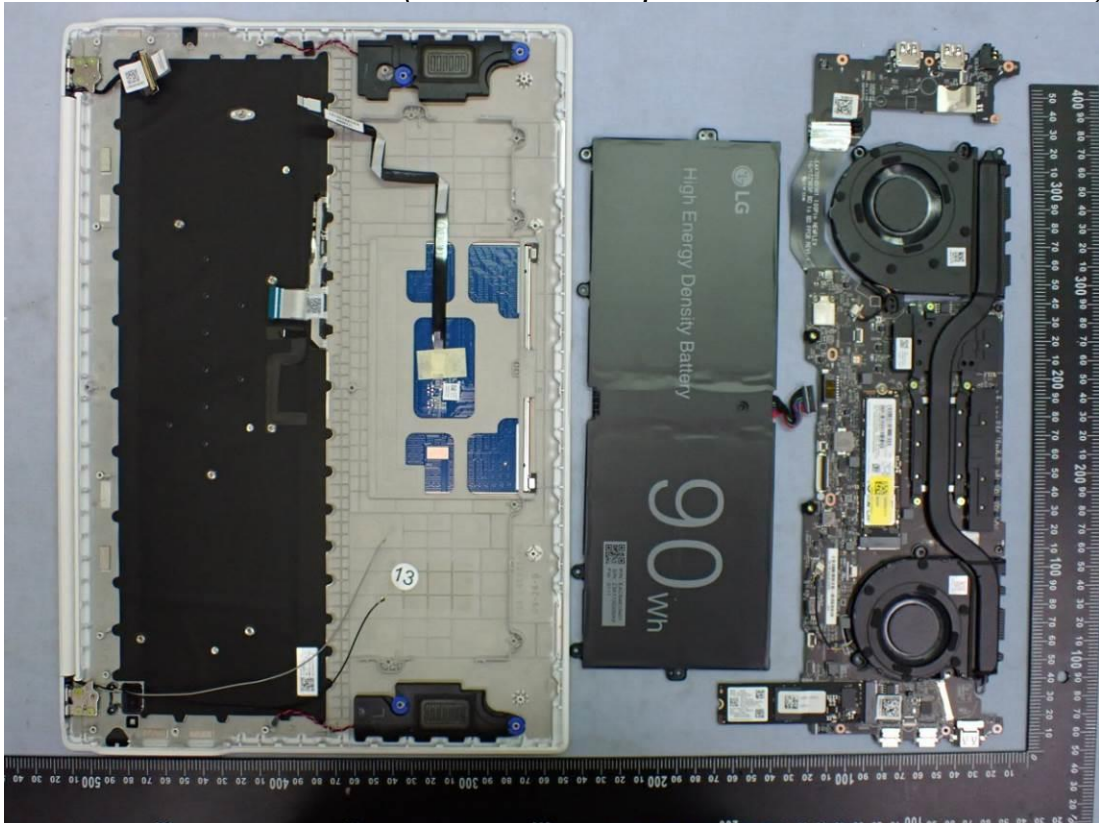


Figure 19
(1XZ90SP MAIN B/D) GM Main Board, Front View

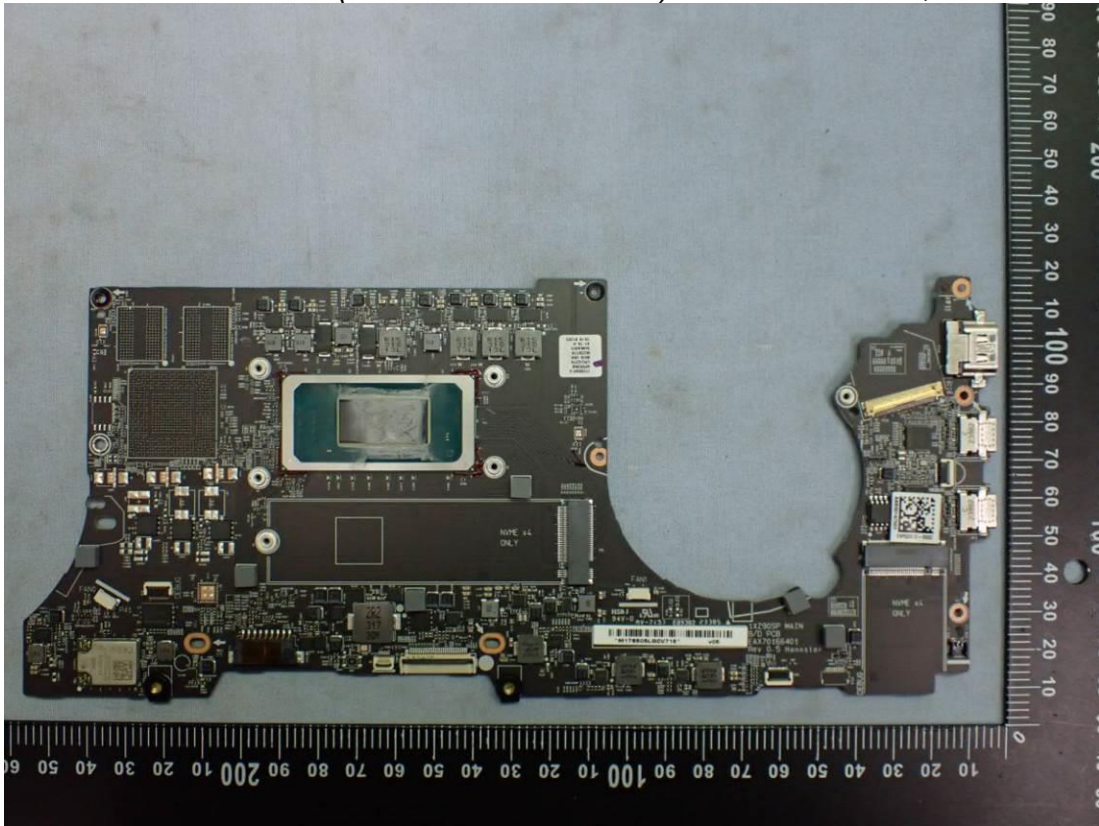


Figure 20
(1XZ90SP MAIN B/D) GM Main Board, Back View

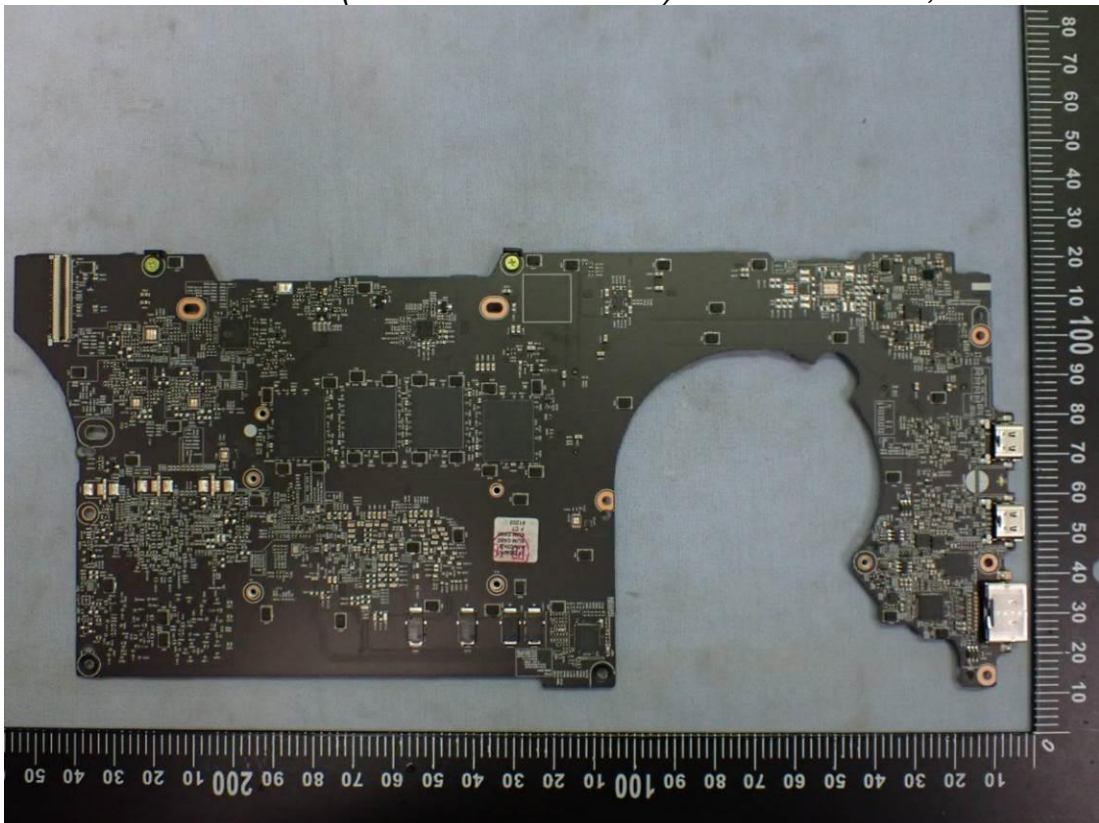


Figure 21
(1XZ90SP MAIN B/D) PM Main Board, Front View

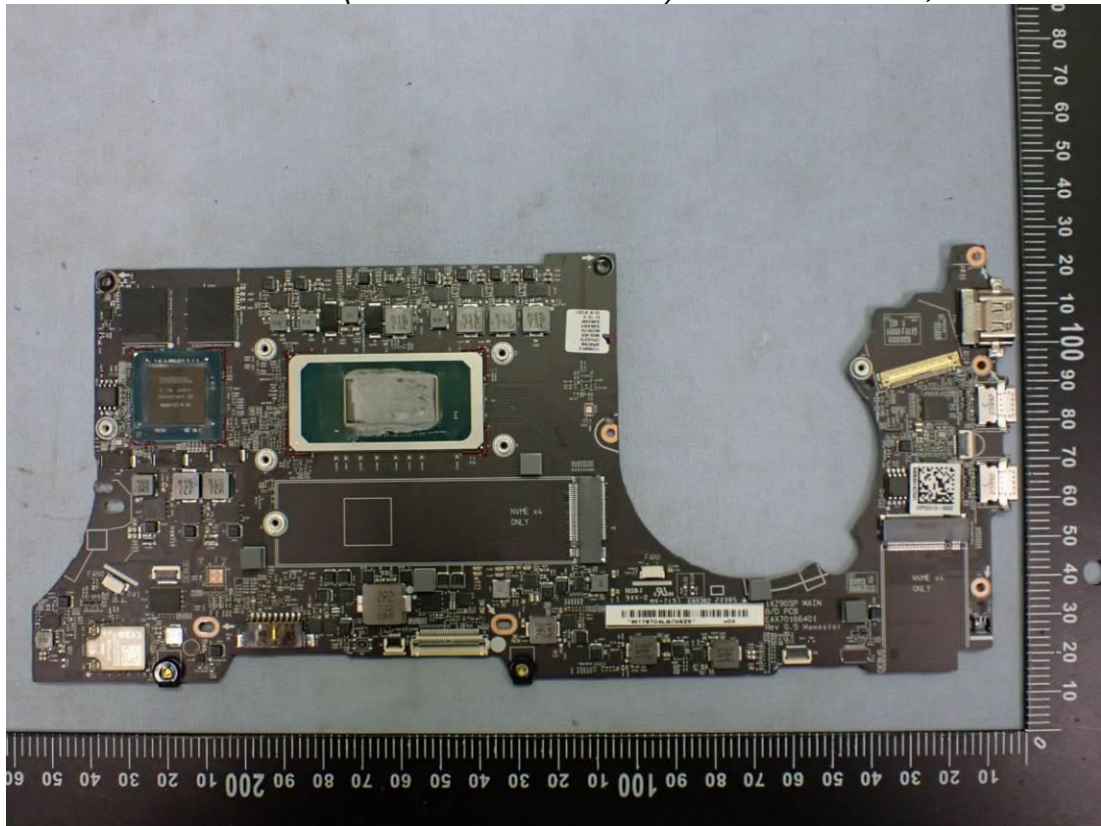


Figure 22
(1XZ90SP MAIN B/D) PM Main Board, Back View

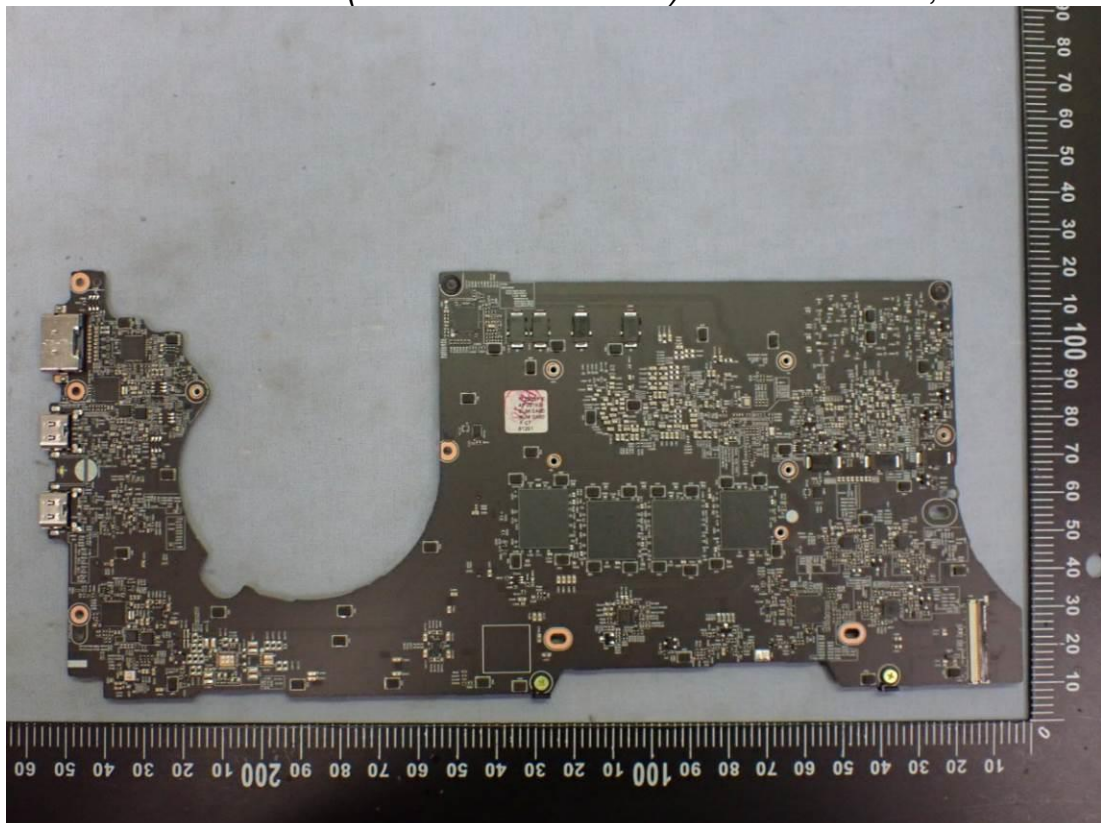


Figure 23
WLAN Combo Card, Front View



Figure 24
WLAN Combo Card, Without Shield and Back View

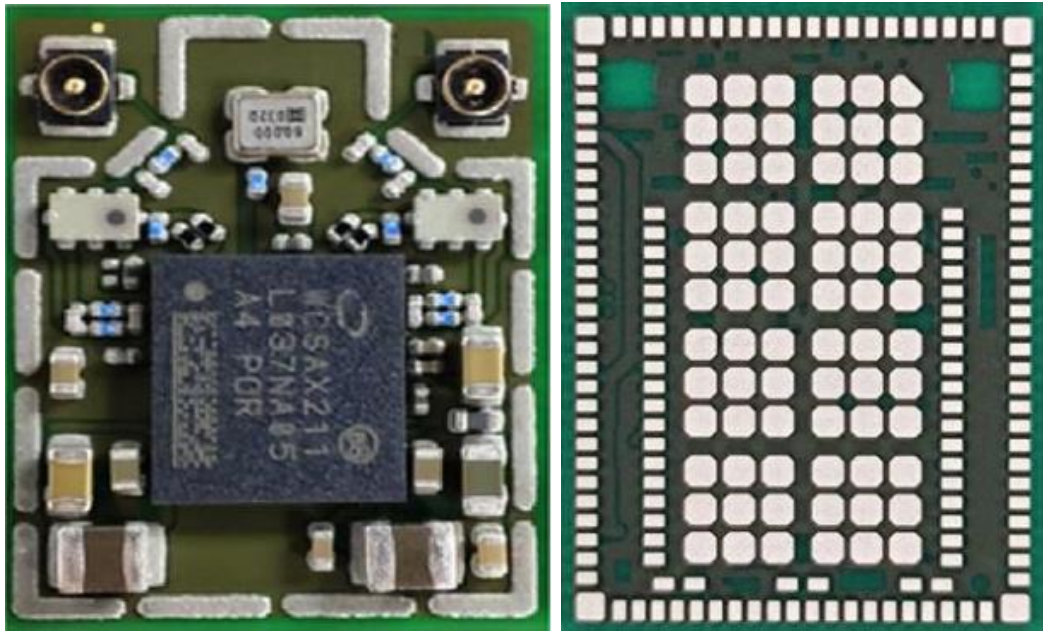


Figure 25
SUB Board, Front View

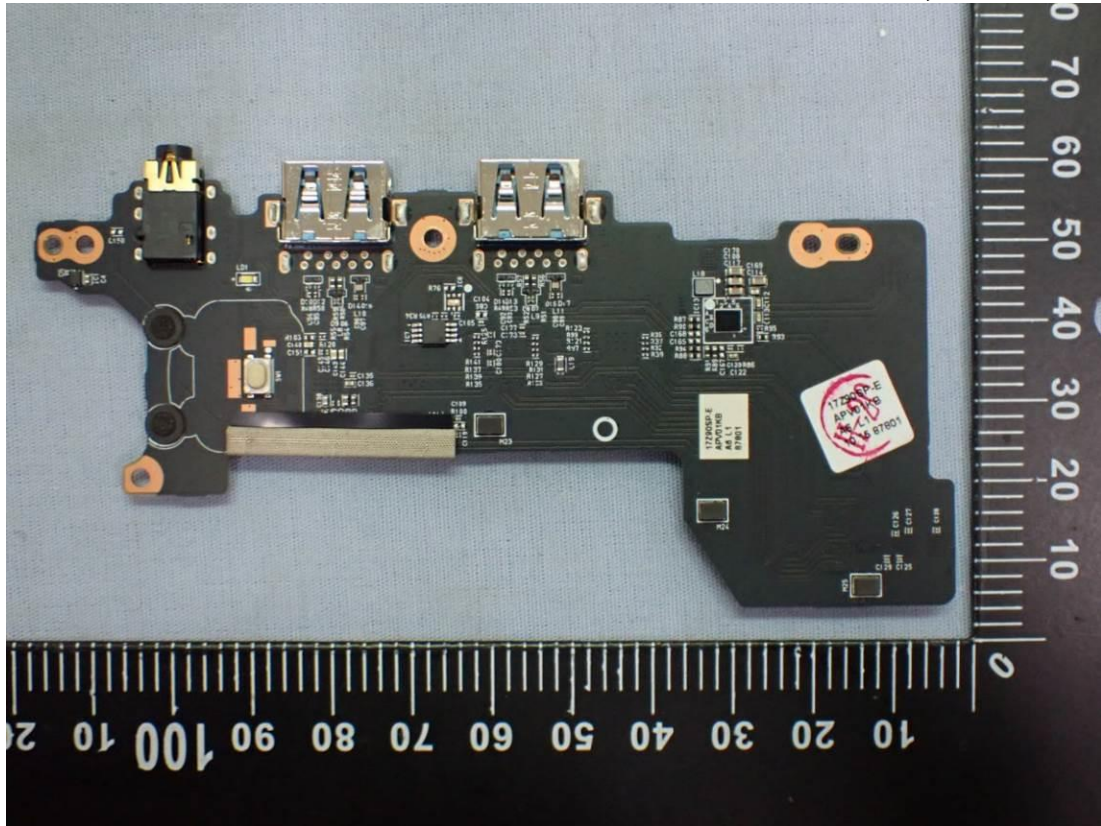


Figure 26
SUB Board, Back View

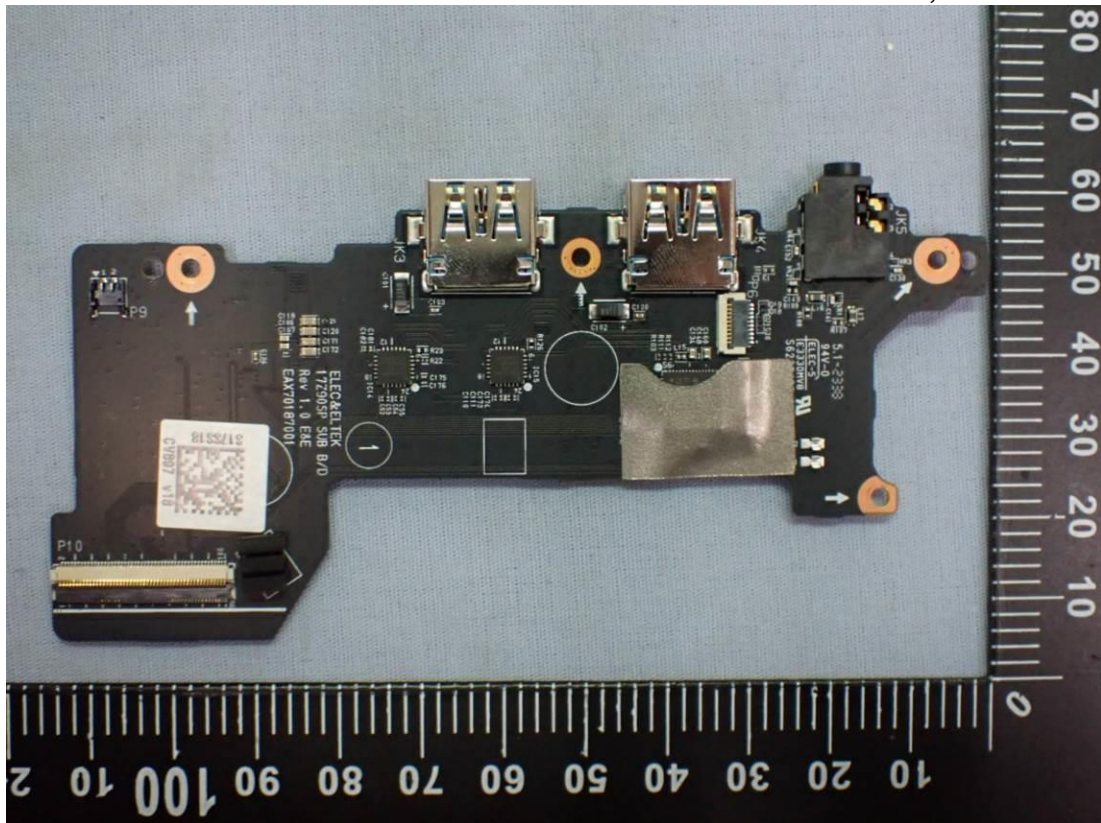


Figure 29
Battery Pack (90Wh), Front View



Figure 30
Battery Pack (90Wh), Back View



Figure 31
SSD, SK hynix, (2TB), Front View



Figure 32
SSD, SK hynix, (2TB), Back View

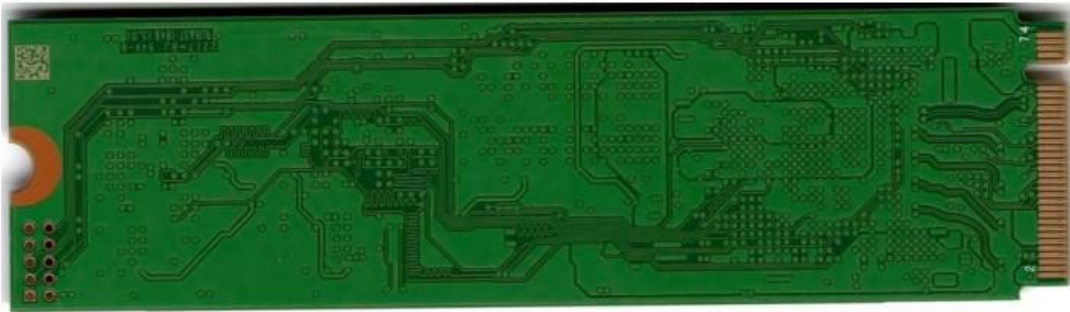


Figure 33
SSD, SK hynix, (1TB), Front View

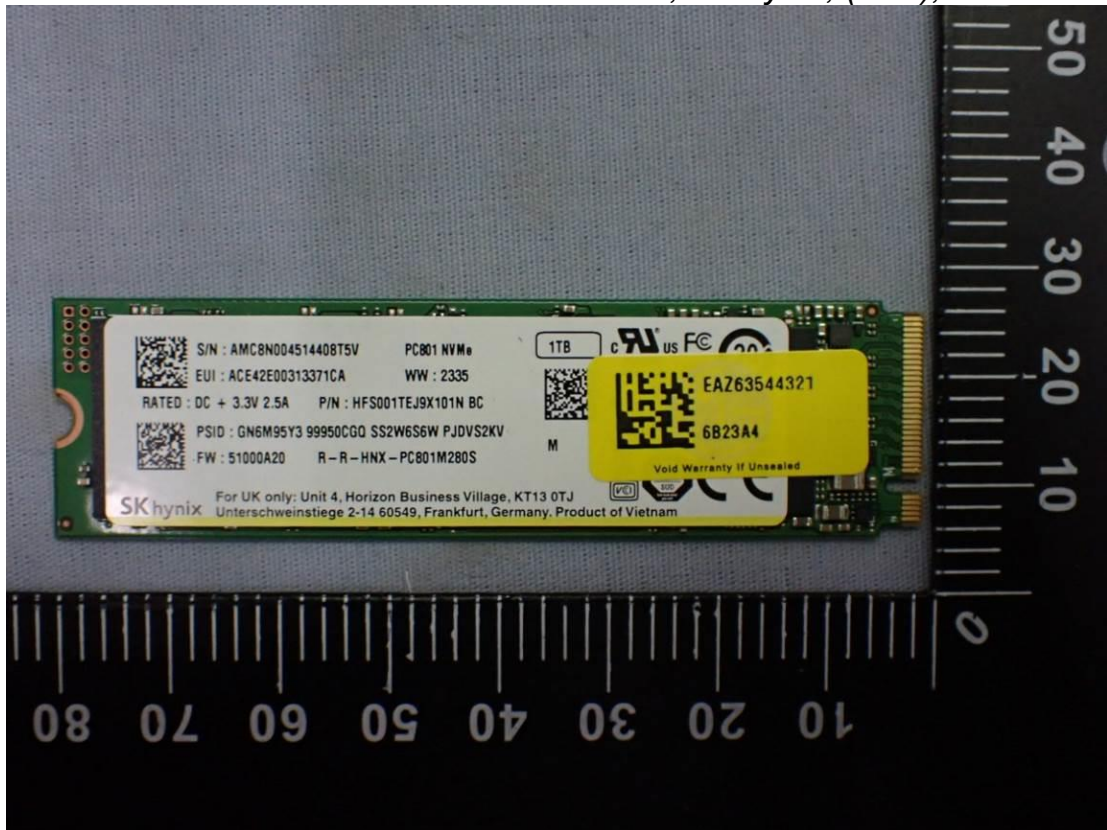


Figure 34
SSD, SK hynix, (1TB), Back View

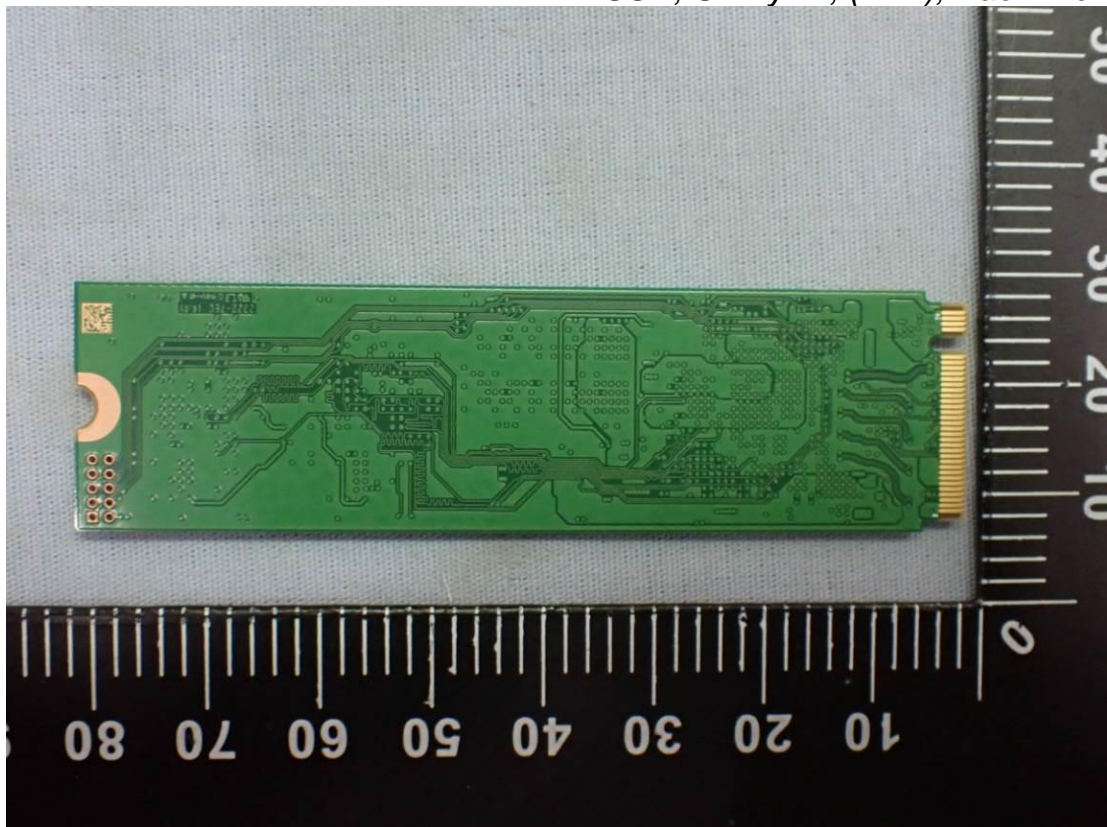


Figure 35
SSD, Samsung, (2TB), Front View

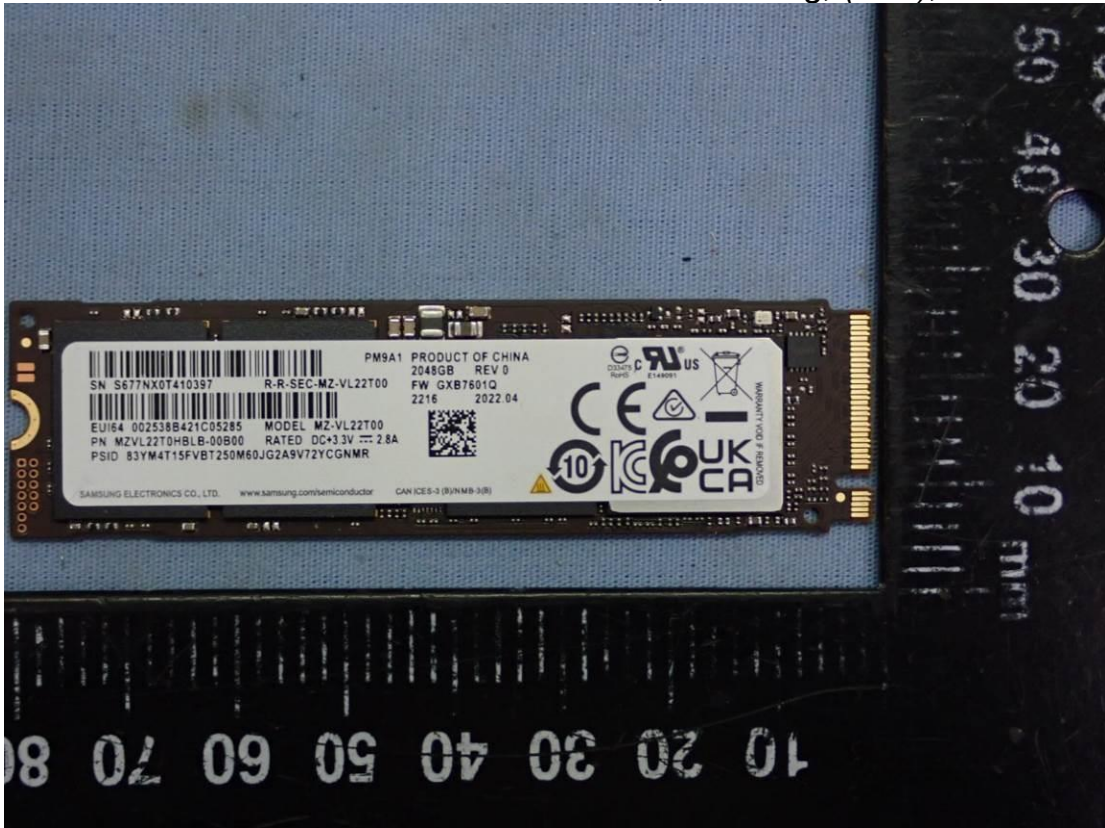


Figure 36
SSD, Samsung, (2TB), Back View



Figure 37
SSD, Samsung, (256GB), Front View



Figure 38
SSD, Samsung, (256GB), Back View

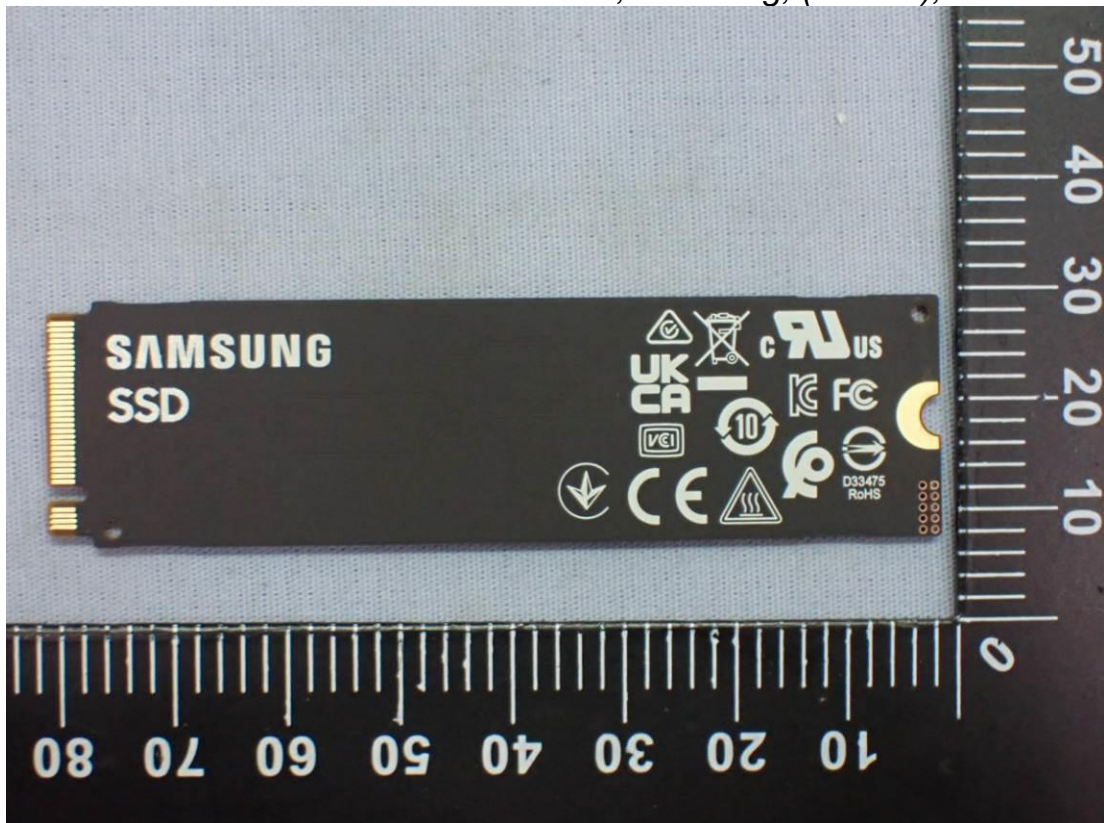


Figure 39
(M/N: LP170WQ2) LCD Panel, Front View



Figure 40
(M/N: LP170WQ2) LCD Panel, Back & Label View



Figure 41
WA-P-LBLB-04-112, WLAN Combo Antenna

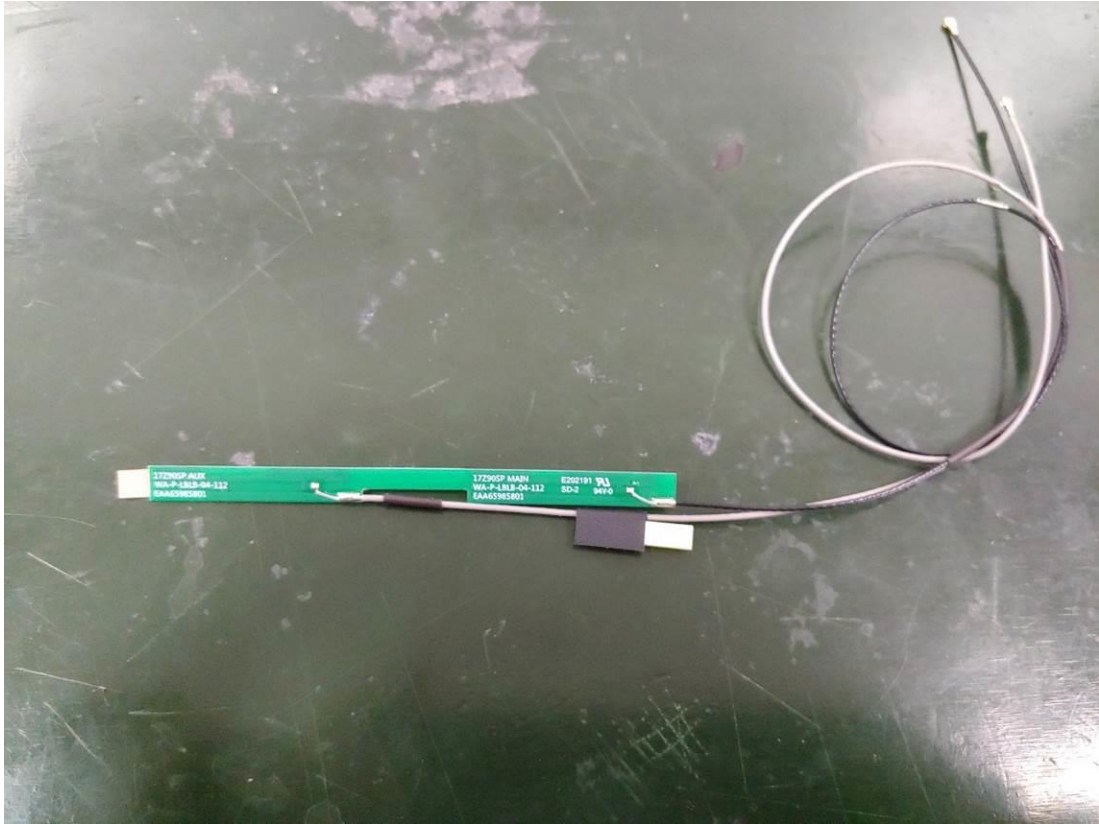


Figure 42
WA-P-LBLB-04-112, WLAN Combo Antenna Position

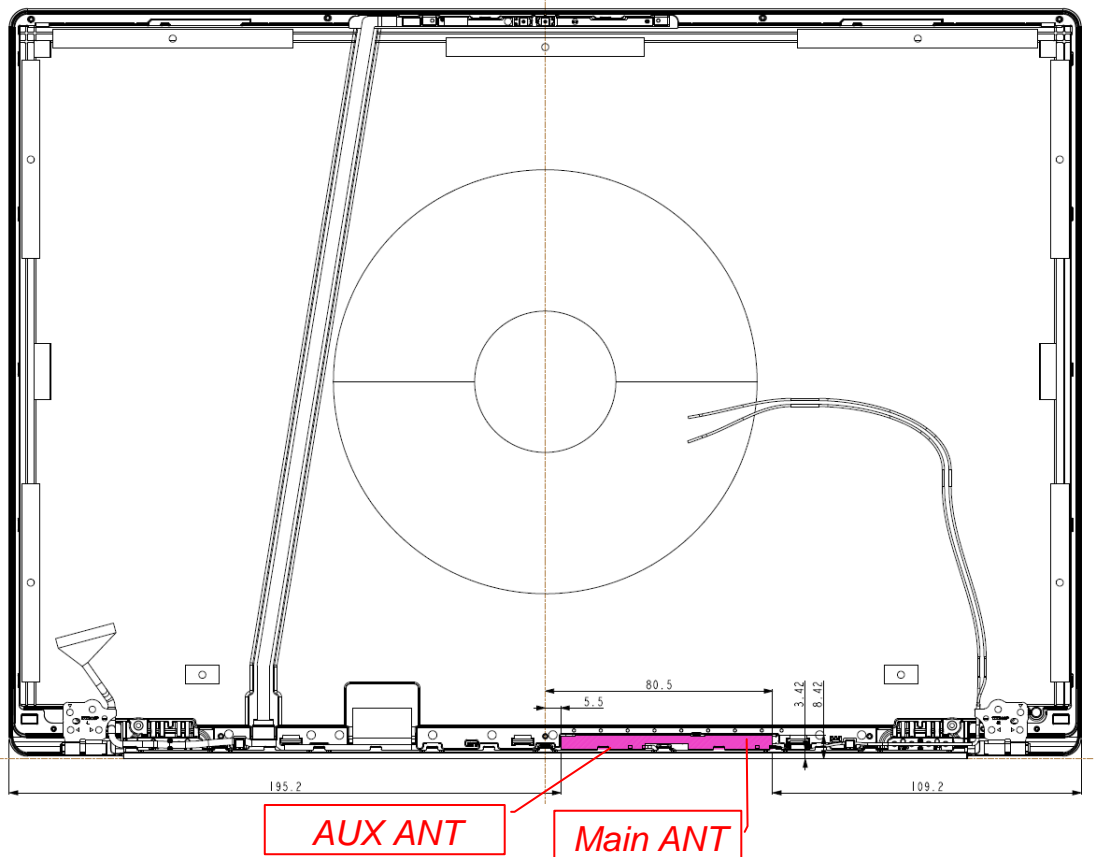


Figure 43
L1LRF016-CS-H, WLAN Combo Antenna



Figure 44
L1LRF016-CS-H, WLAN Combo Antenna Position

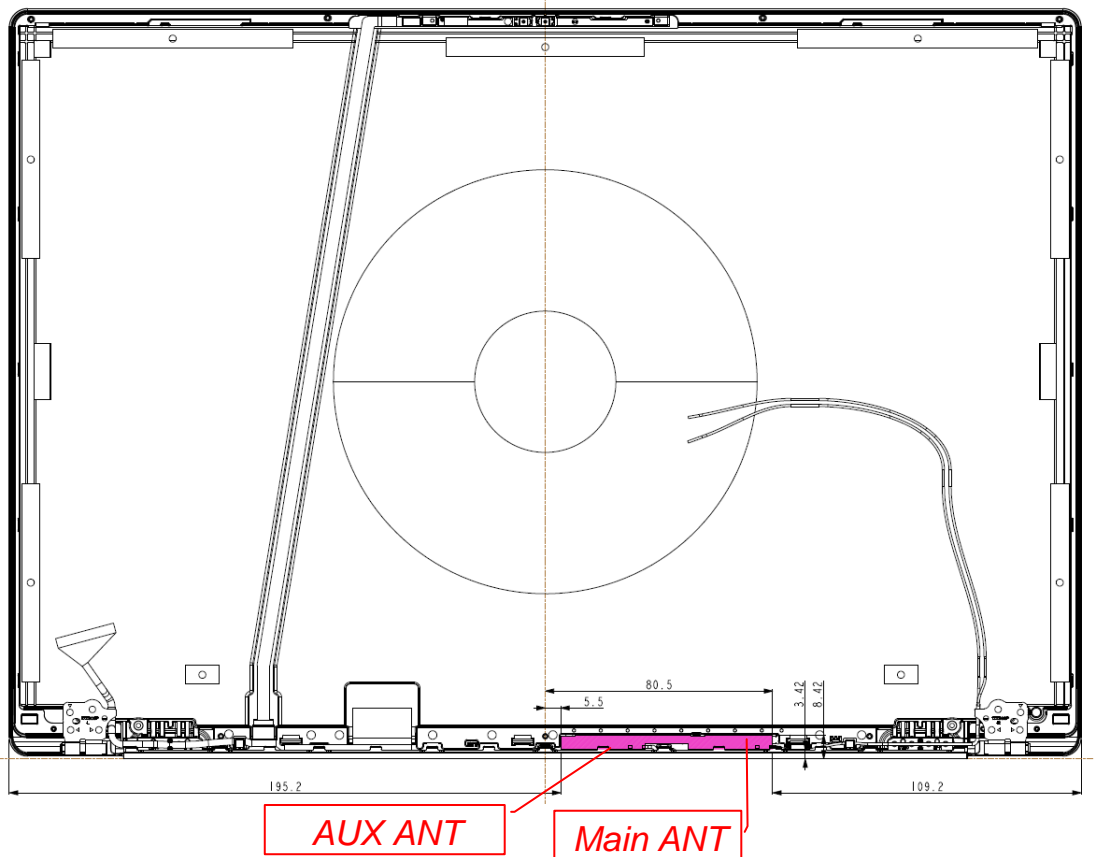


Figure 45
Antenna Location



Figure 46
DC Fan

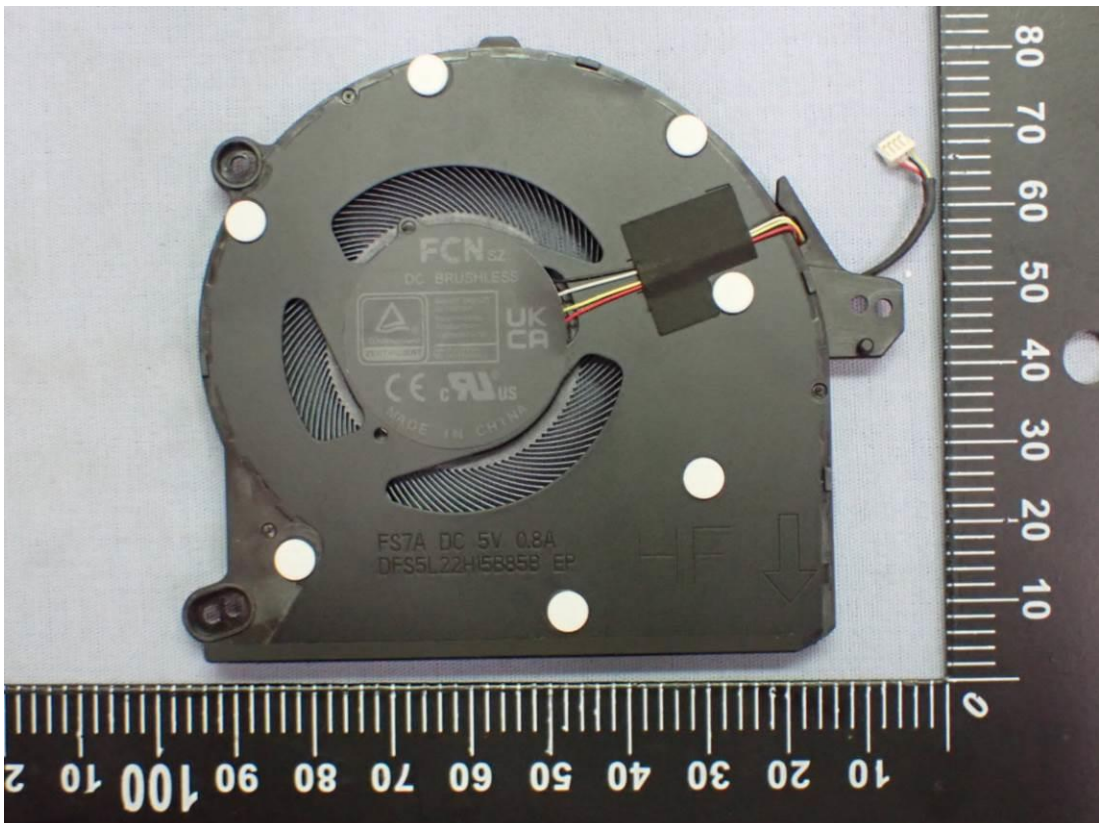


Figure 47
DC Fan

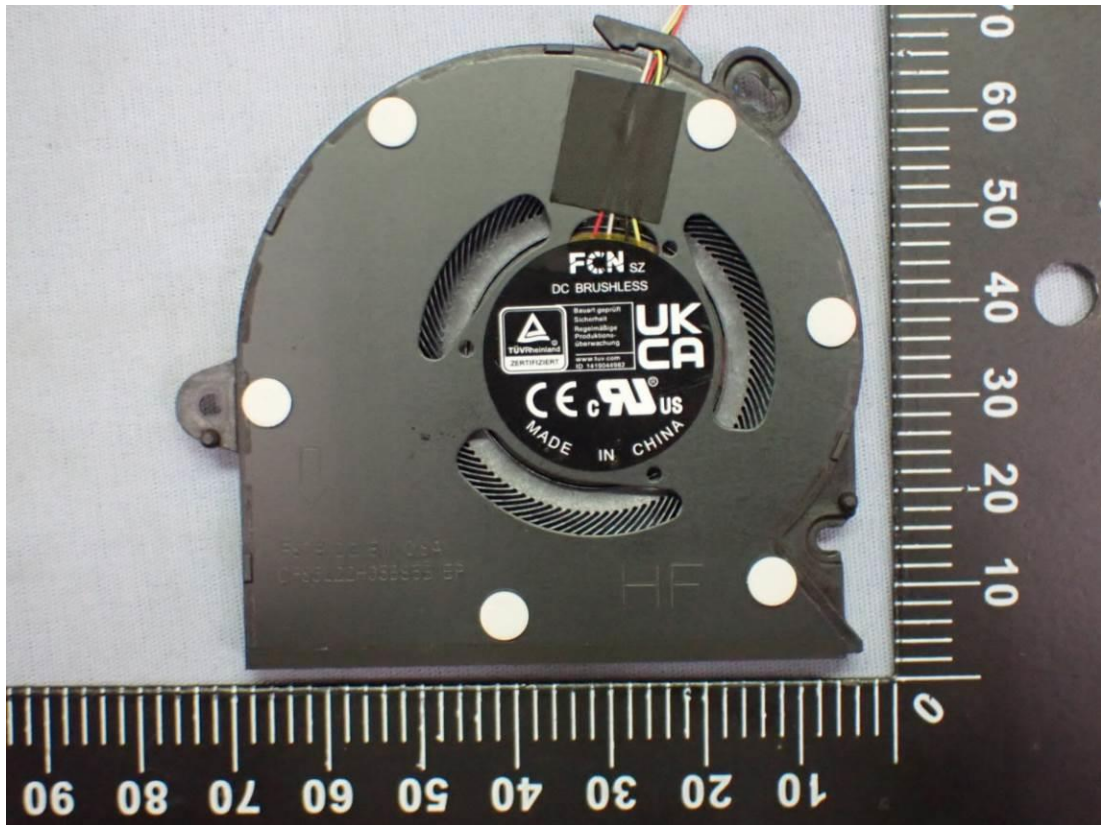


Figure 48
Internal View

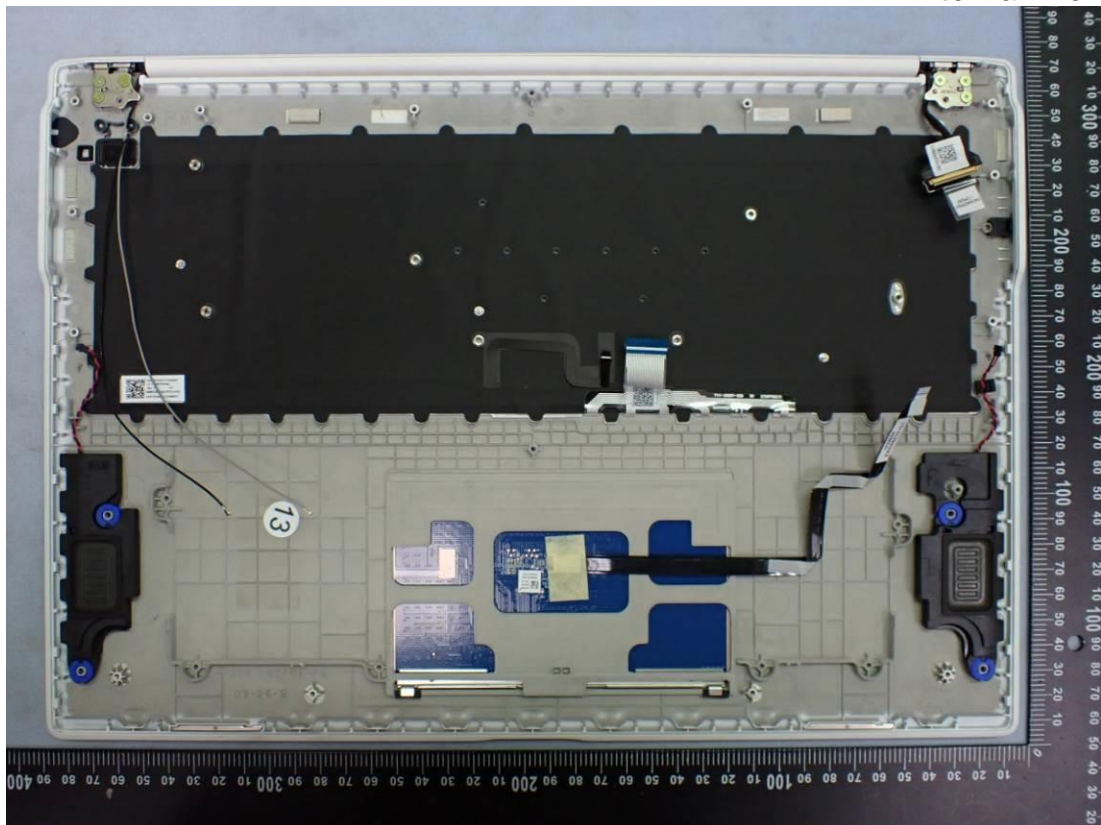


Figure 49
Internal View (Touch PAD)

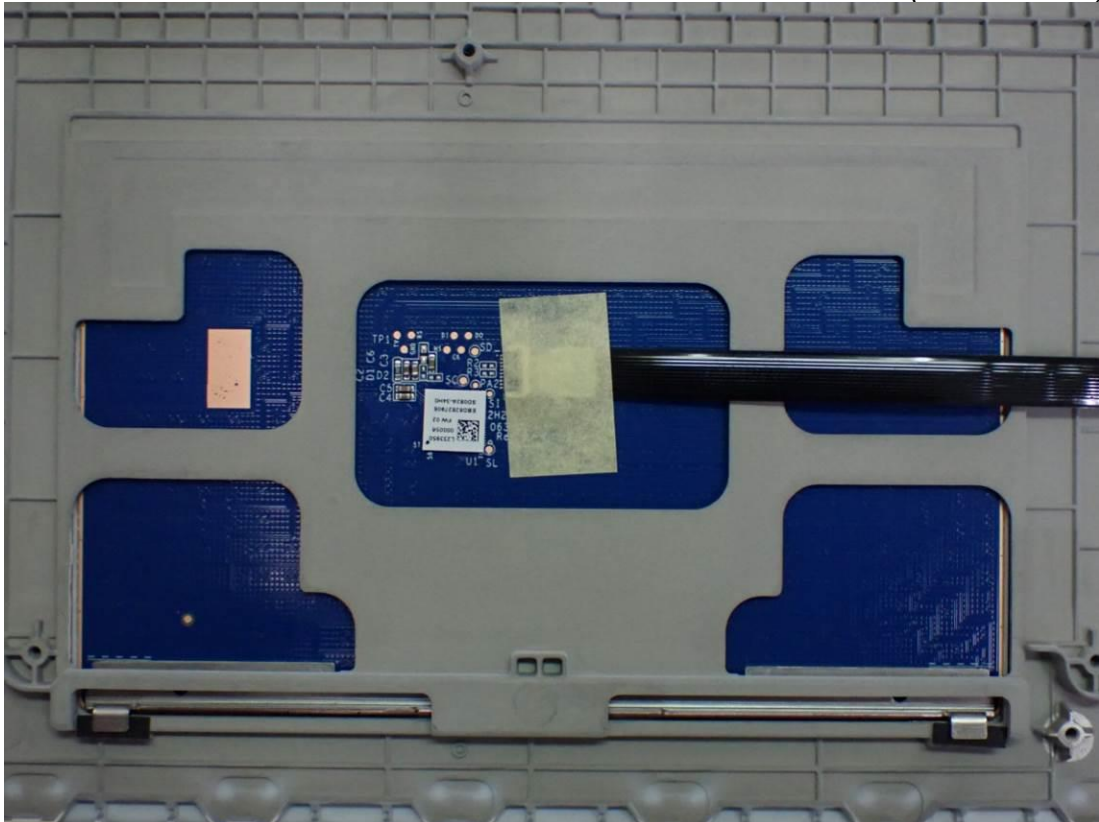


Figure 50
ARIN 100 Megabit Ethernet, LAN Gender View (White), Front View

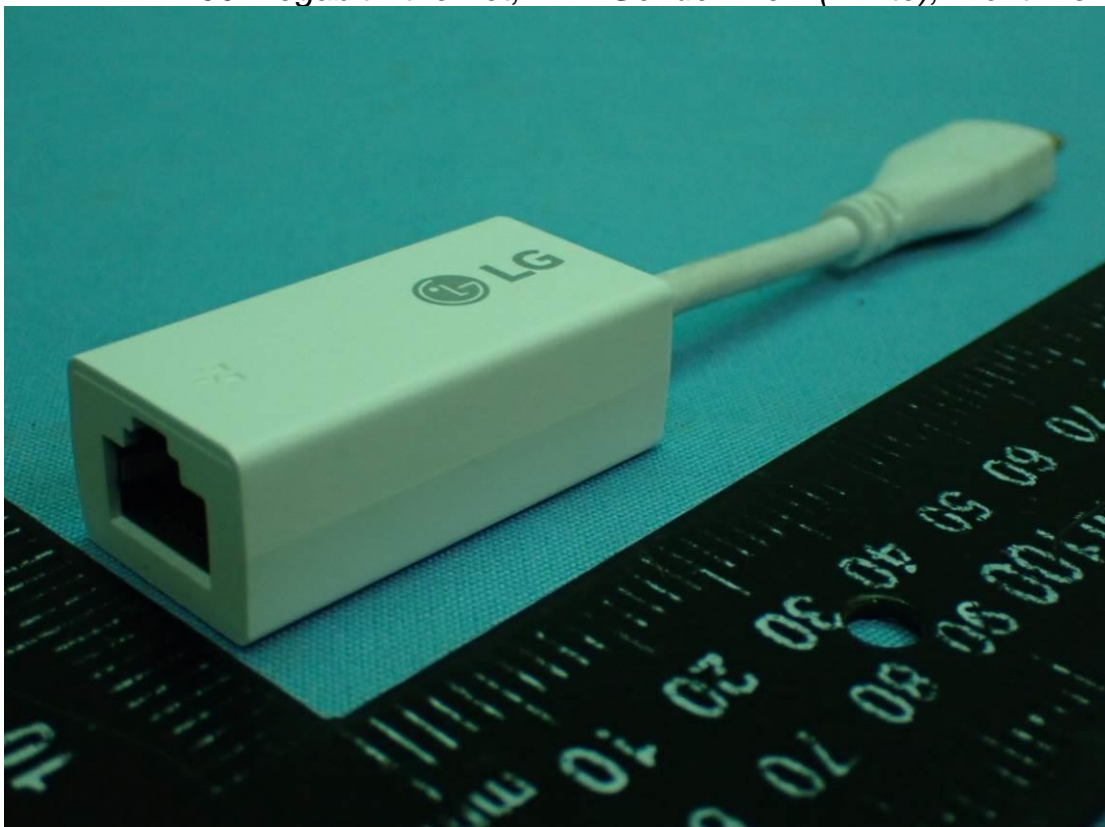


Figure 51
ARIN 100 Megabit Ethernet, LAN Gender View (White), Front View

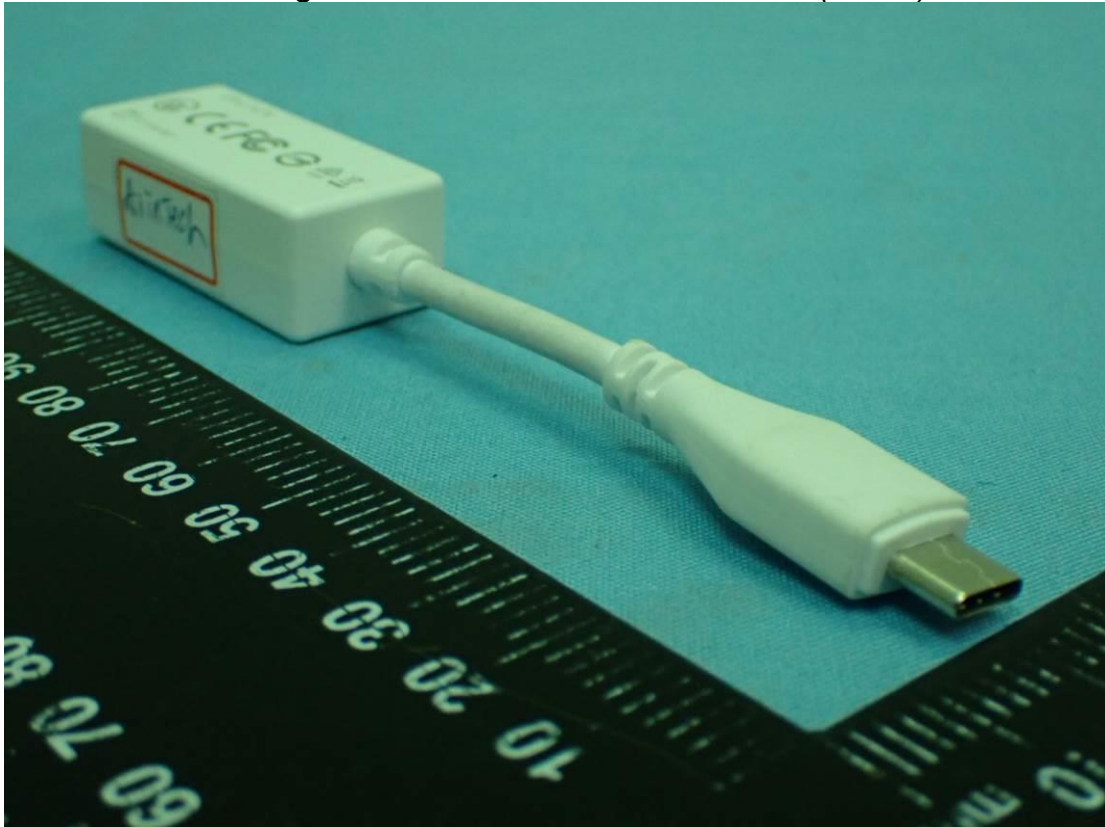


Figure 52
MEC 100 Megabit Ethernet, LAN Gender (White), Front View

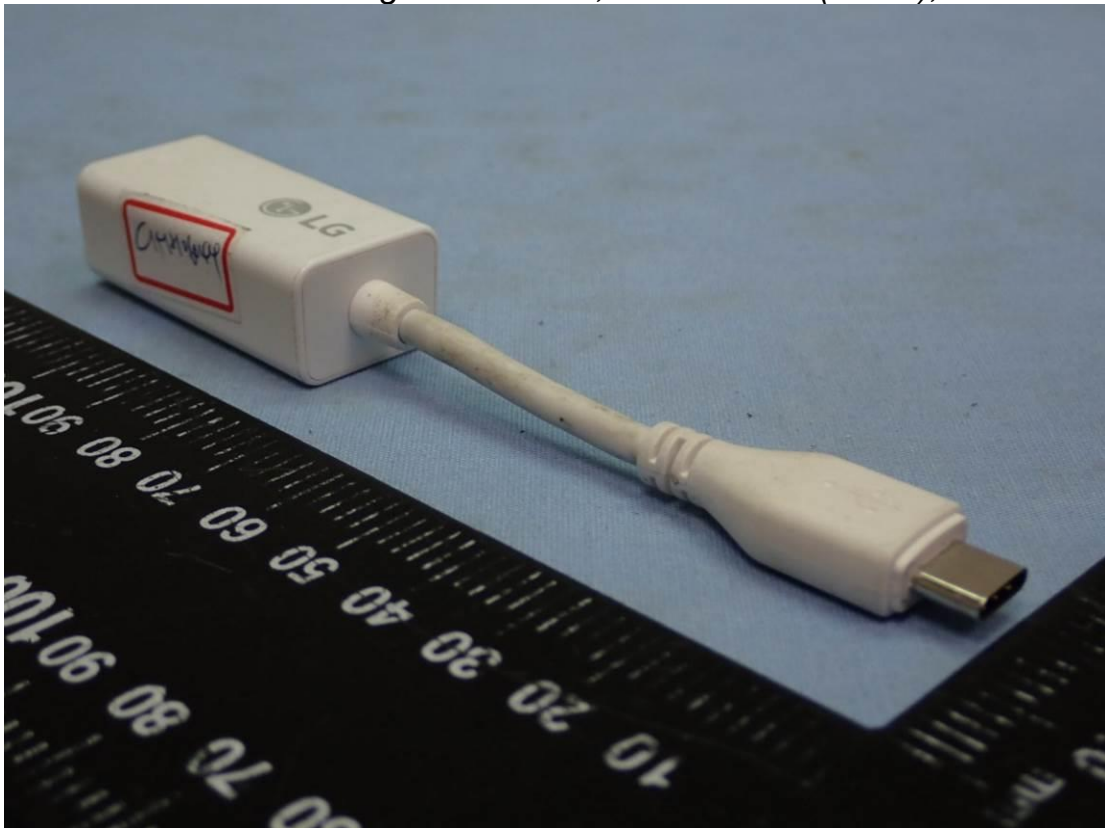


Figure 53
MEC 100 Megabit Ethernet, LAN Gender (White), Back View

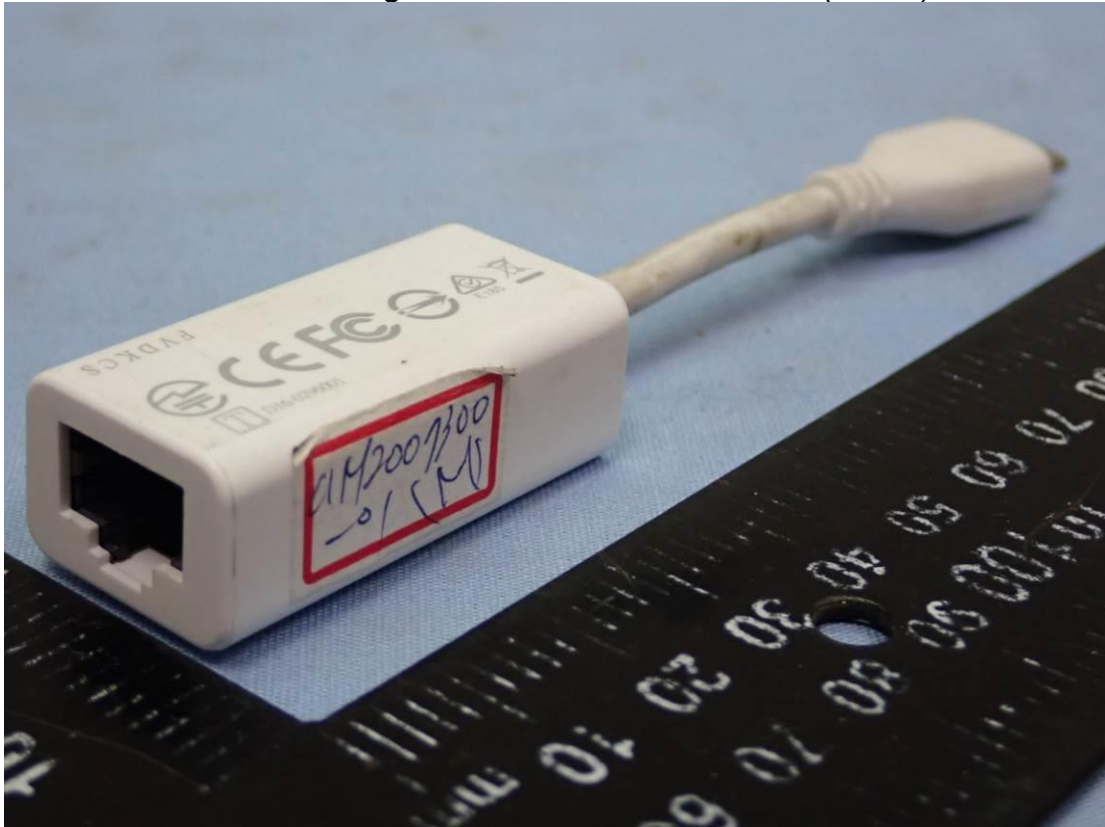


Figure 54
ARIN 100 Megabit Ethernet, LAN Gender View (Black), Front View

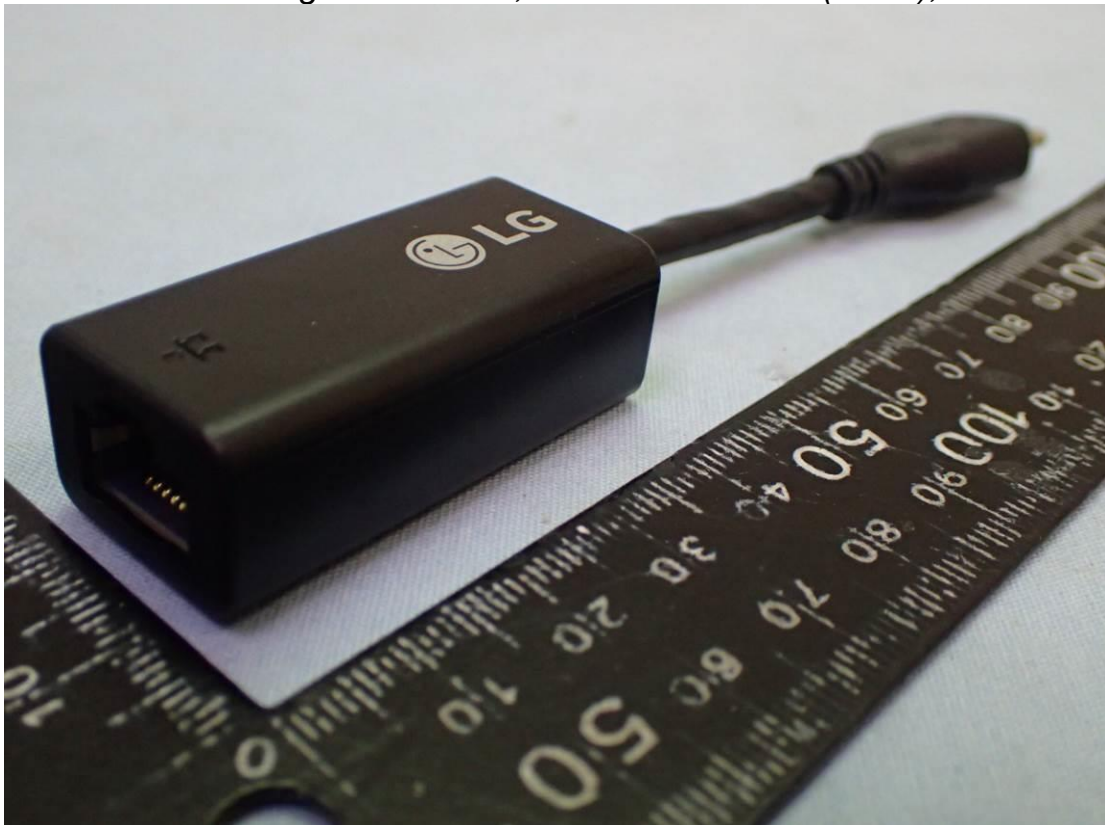


Figure 55
ARIN 100 Megabit Ethernet, LAN Gender View (Black), Front View

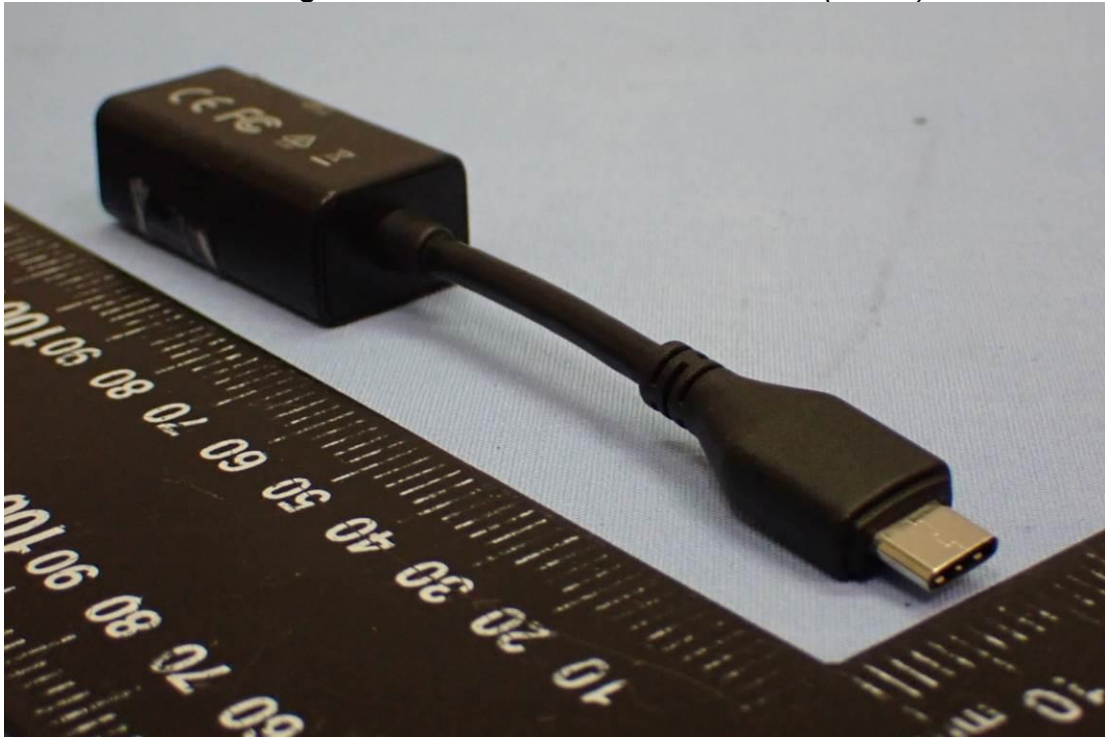


Figure 56
MEC 100 Megabit Ethernet, LAN Gender View (Black), Front View



Figure 57
MEC100 Megabit Ethernet, LAN Gender View (Black), Front View

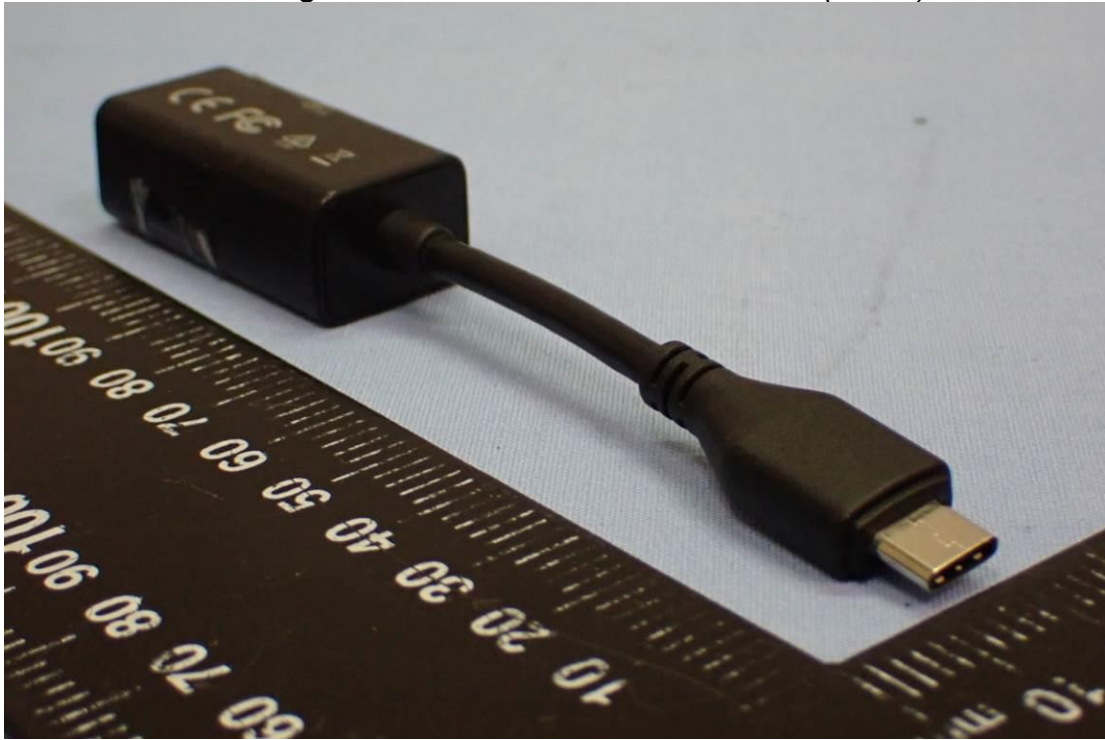
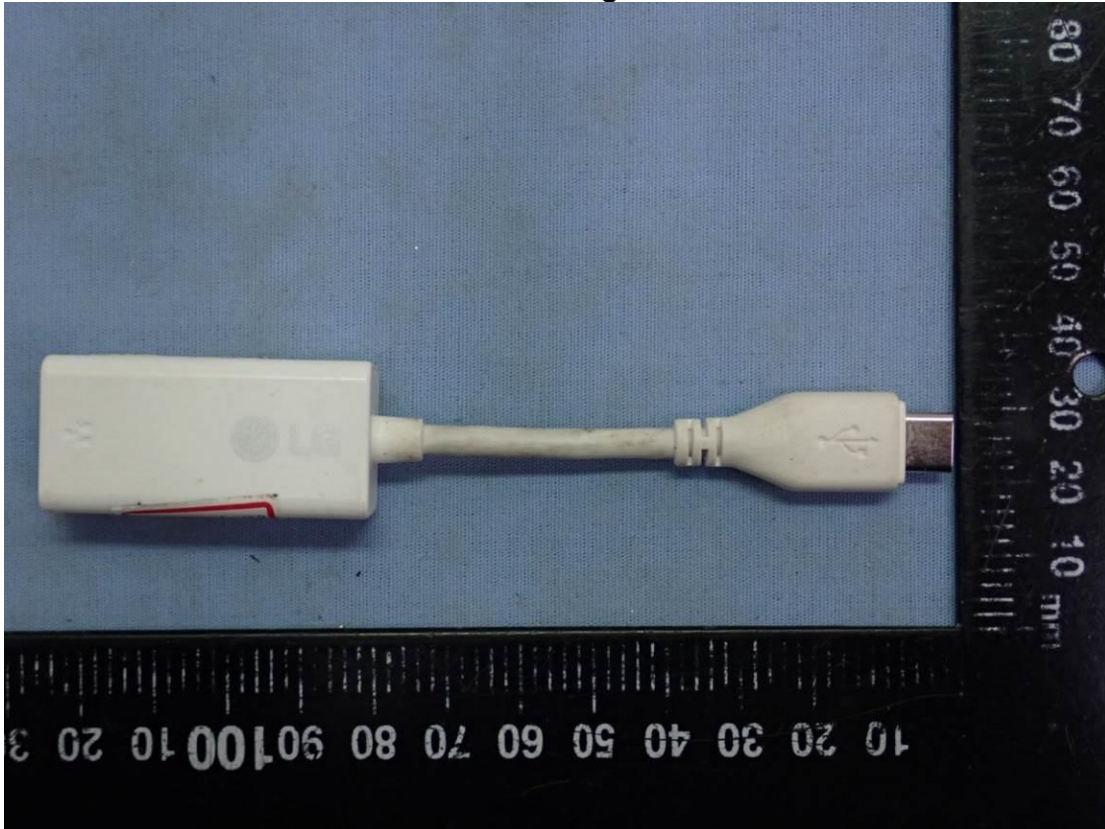
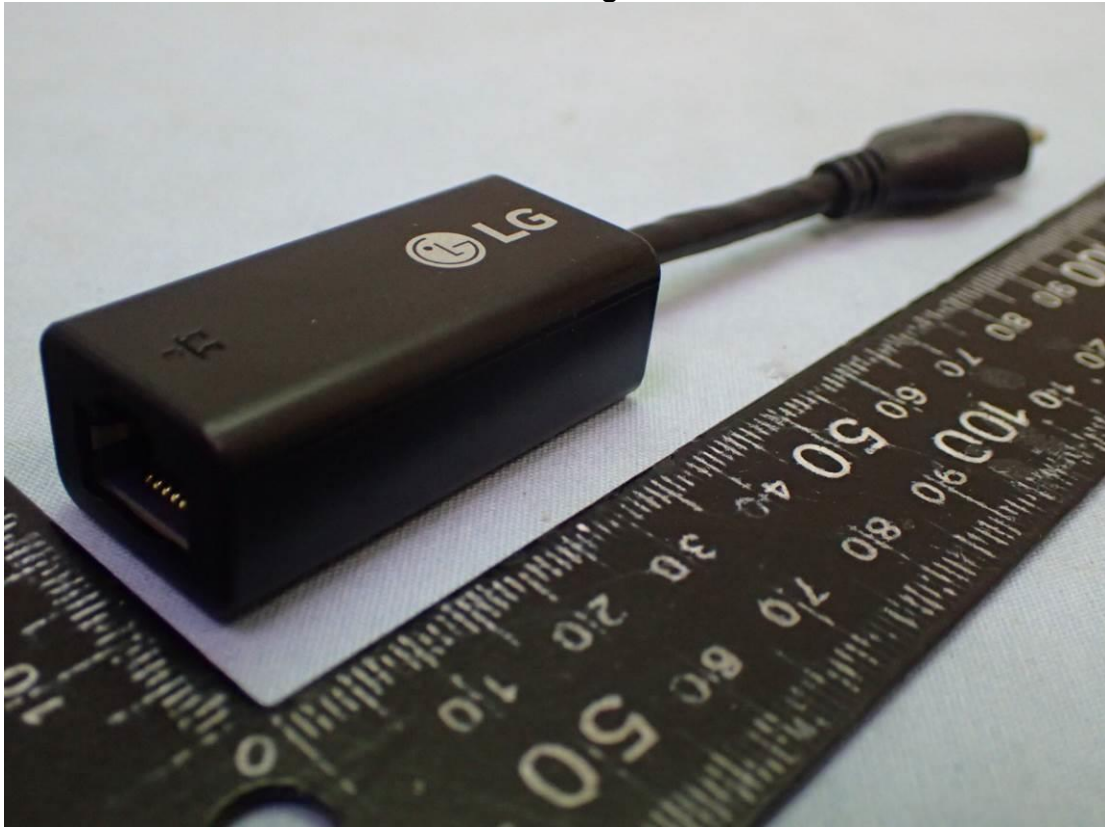


Figure 58
HUIZHOU DEHONG 100 Megabit Ethernet, LAN Gender View



*Figure 59
HUIZHOU DEHONG 100 Megabit Ethernet, LAN Gender View*



*Figure 60
ARIN 1000 Megabit Ethernet, LAN Gender (White), Front View*



Figure 61
ARIN 1000 Megabit Ethernet, LAN Gender (White), Back View

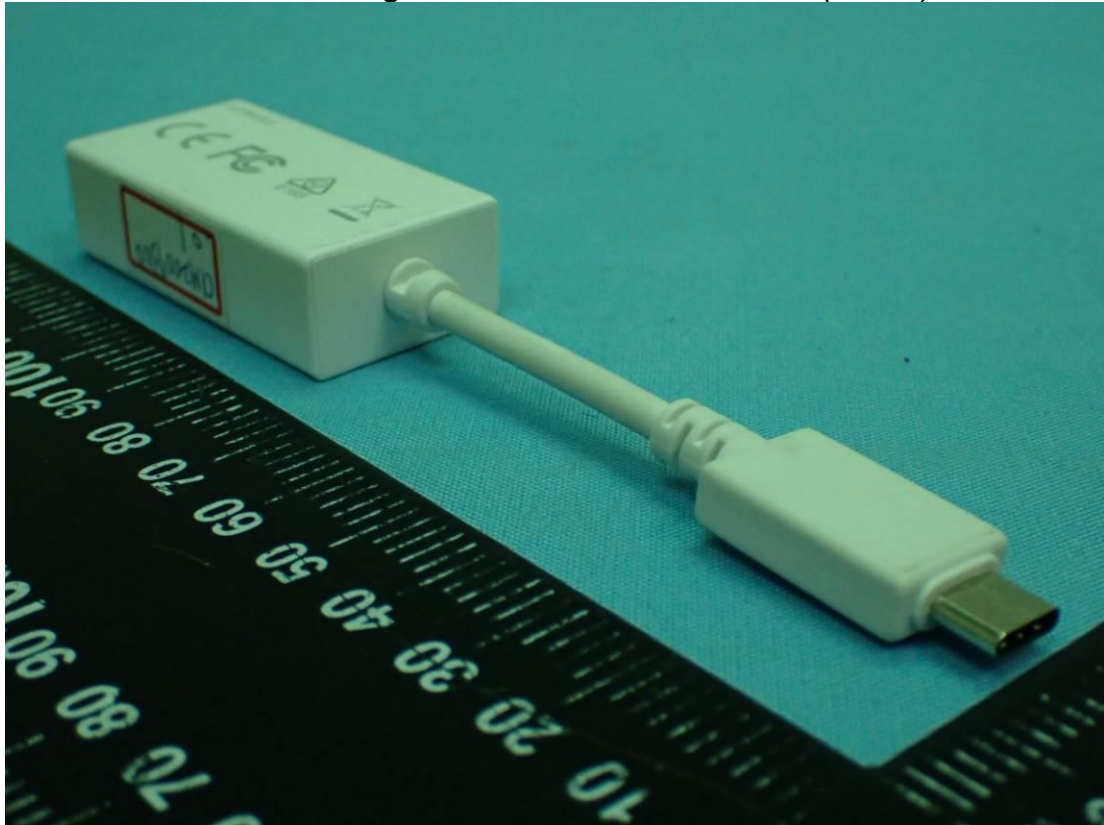


Figure 62
ARIN 1000 Megabit Ethernet, LAN Gender (Black), Front View

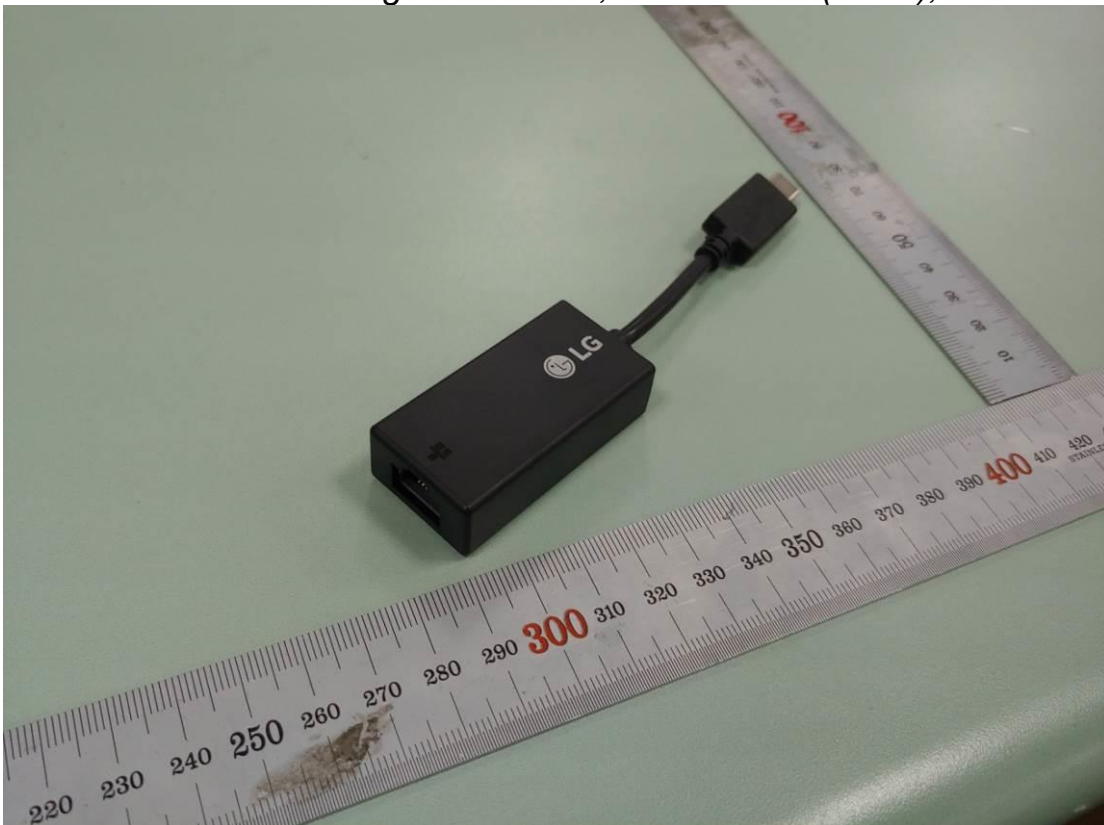


Figure 63
ARIN 1000 Megabit Ethernet, LAN Gender (Black), Front View

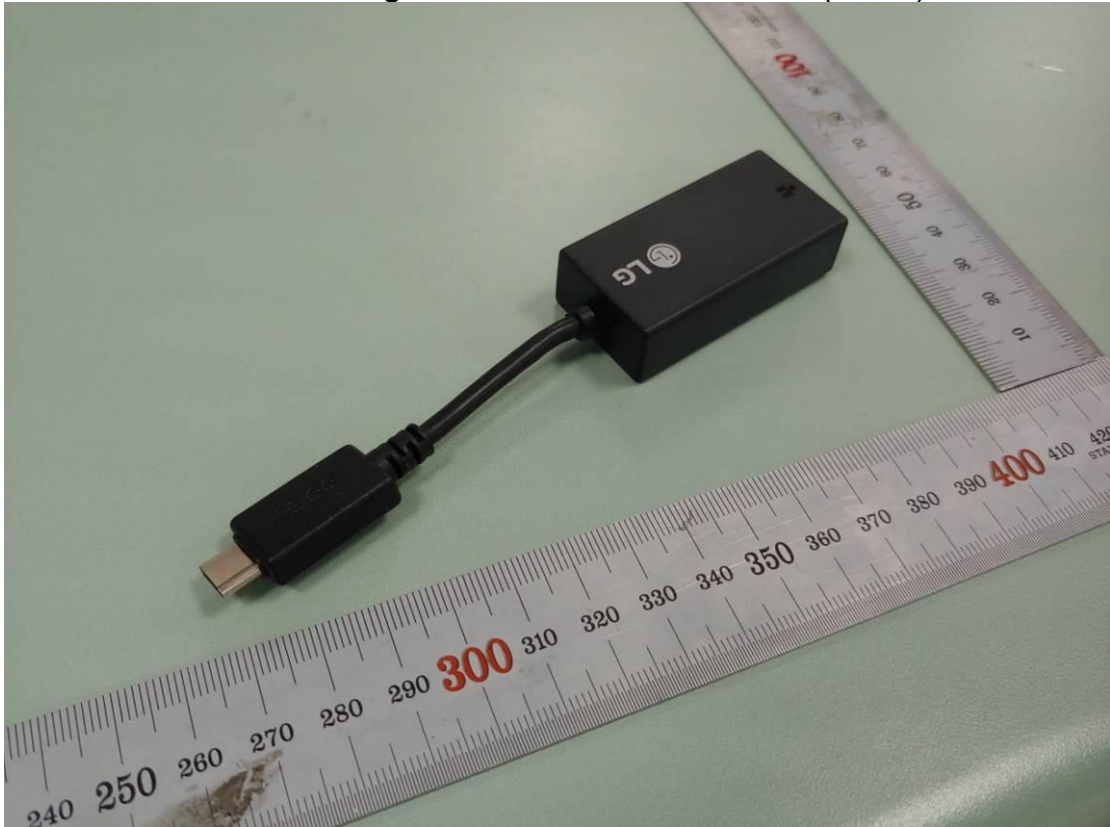


Figure 64
(M/N: LP65WFC20P-NJ) AC Adapter, Front and Side View



Figure 65
(M/N: LP65WFC20P-NJ) AC Adapter, Back and Side View

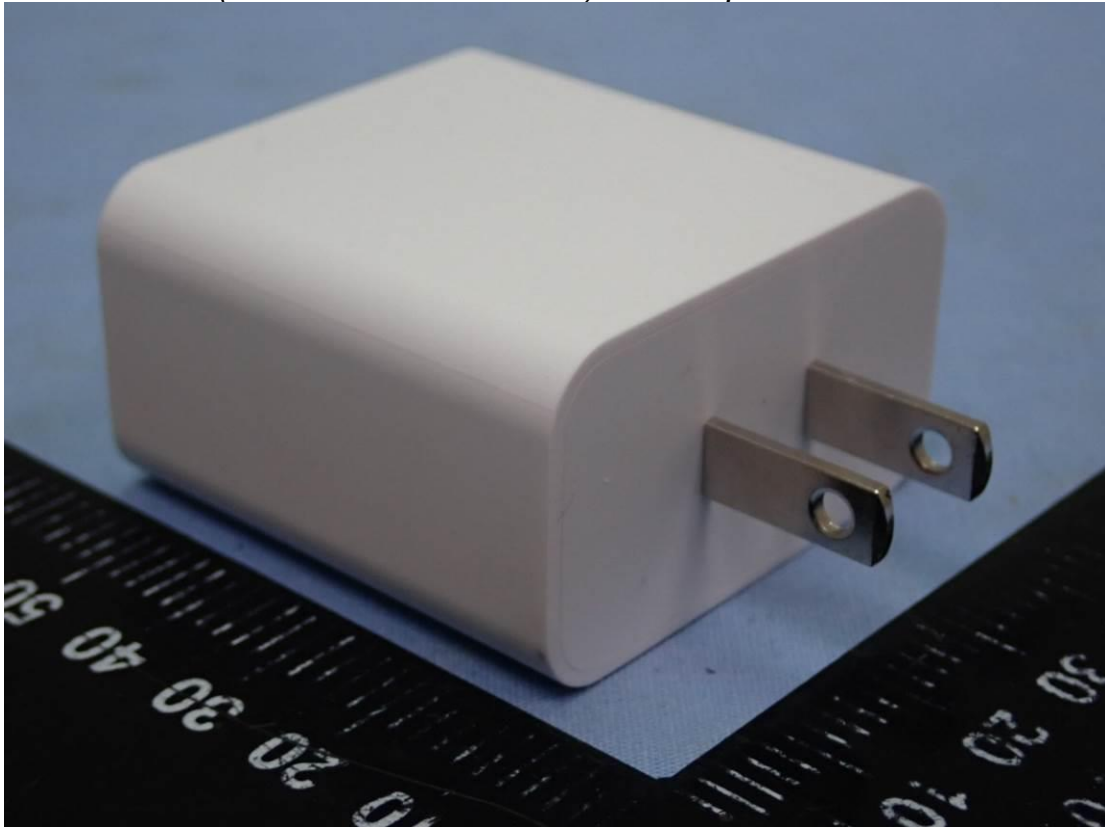


Figure 66
(M/N: LP65WFC20P-NJ) AC Adapter, Label View

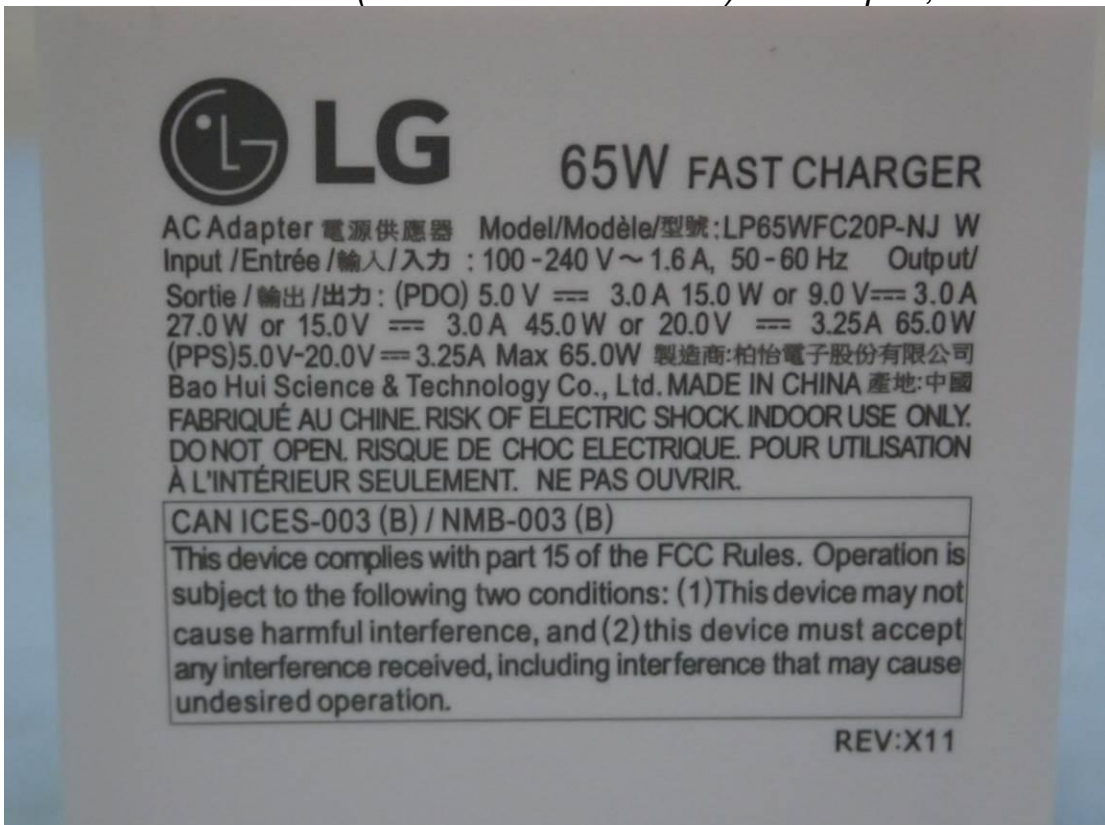


Figure 67
(M/N: LP90DGC20H-WW) AC Adapter, Front and Side View

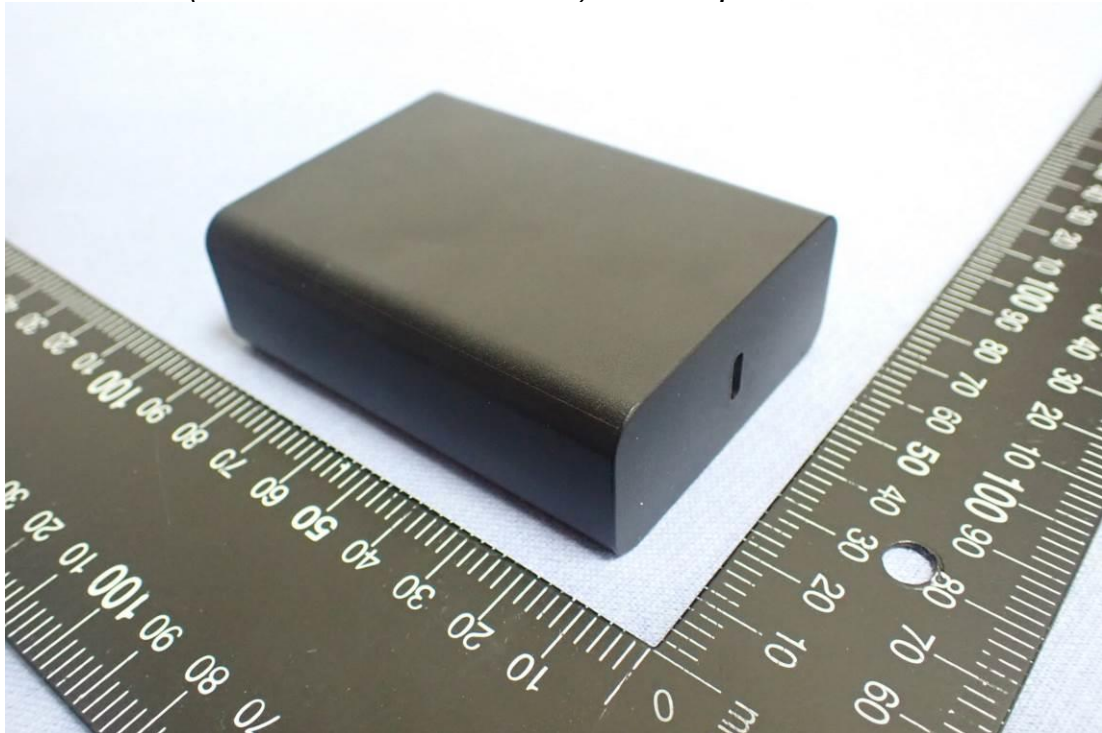


Figure 68
(M/N: LP90DGC20H-WW) AC Adapter, Back and Side View

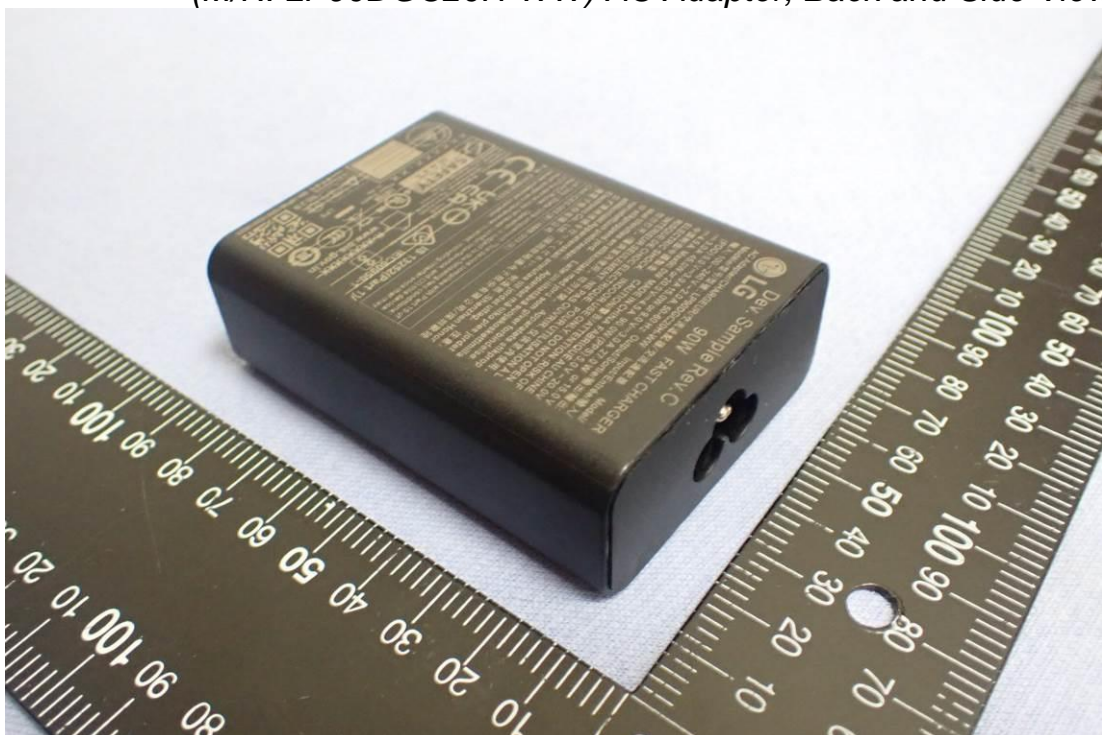


Figure 69
(M/N: LP90DGC20H-WW) AC Adapter, Label View



Figure 70
USB C Cable (5A)



Figure 71
USB Type C Cable (3A)

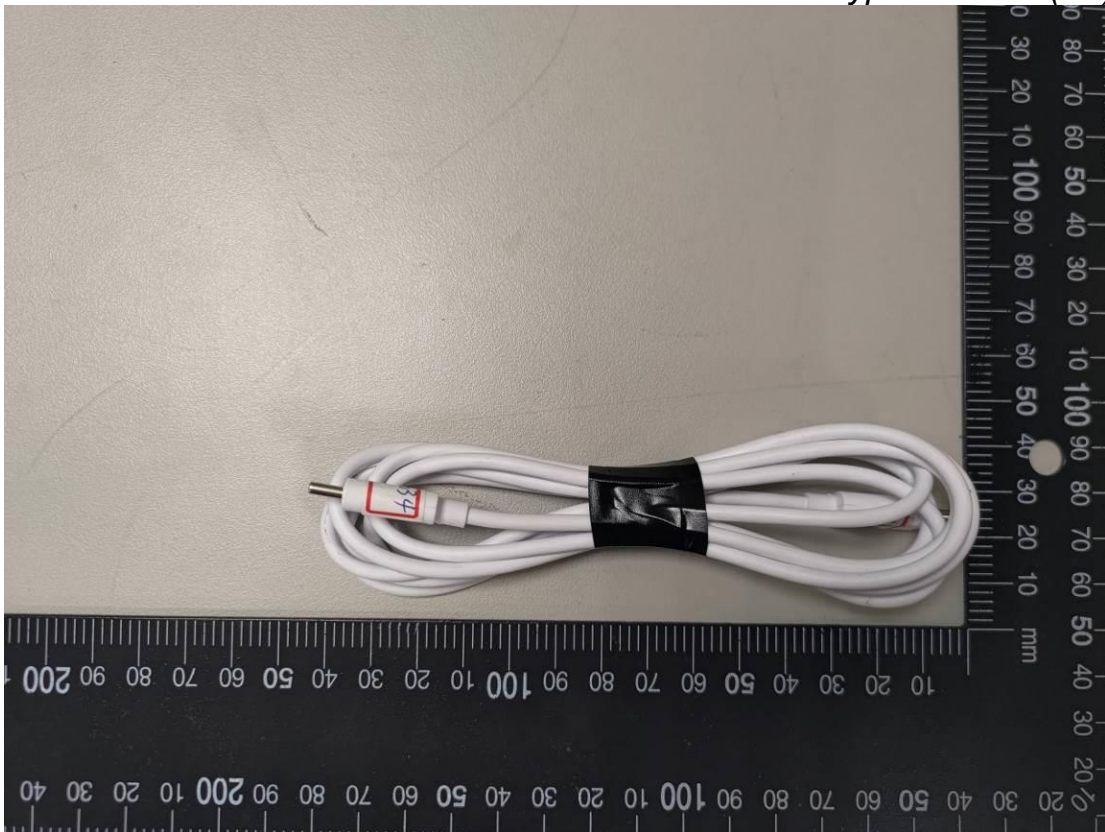


Figure 72
USB Type C Cable (3A)

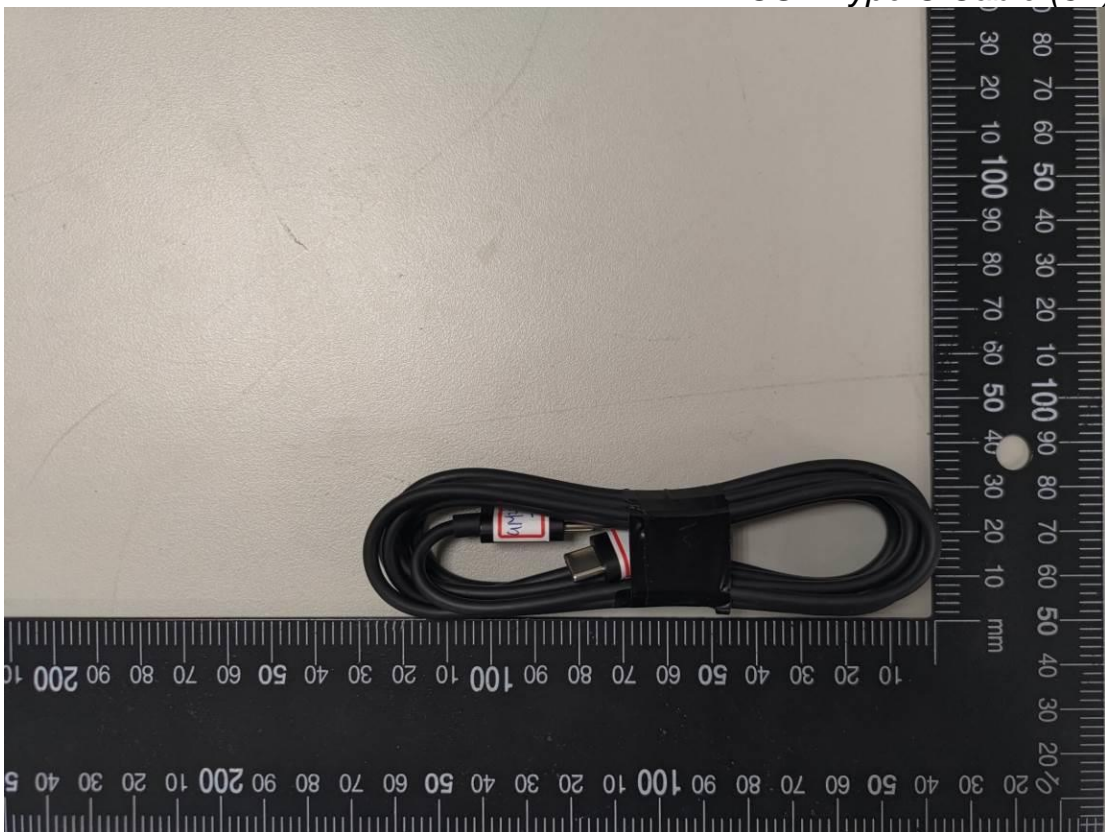


Figure 73
AC Power Cord

