

## System Check\_Head\_2450MHz

### DUT: D2450V2-736

Communication System: CW; Frequency: 2450 MHz; Duty Cycle: 1:1

Medium: HSL\_2450\_220323 Medium parameters used:  $f = 2450$  MHz;  $\sigma = 1.841$  S/m;  $\epsilon_r = 39.152$ ;  $\rho = 1000$  kg/m<sup>3</sup>

Ambient Temperature : 23.6 °C ; Liquid Temperature : 22.6 °C

### DASY5 Configuration

- Probe: EX3DV4 - SN3925; ConvF(7.93, 7.93, 7.93) @ 2450 MHz; Calibrated: 2021/4/23
- Sensor-Surface: 1.4mm (Mechanical Surface Detection)
- Electronics: DAE4 Sn1311; Calibrated: 2021/8/20
- Phantom: ELI v4.0\_Right; Type: QDOVA001BB; Serial: TP:1029
- Measurement SW: DASY52, Version 52.10 (4); SEMCAD X Version 14.6.14 (7483)

**Pin=50mW/Area Scan (71x71x1):** Interpolated grid: dx=1.200 mm, dy=1.200 mm

Maximum value of SAR (interpolated) = 4.18 W/kg

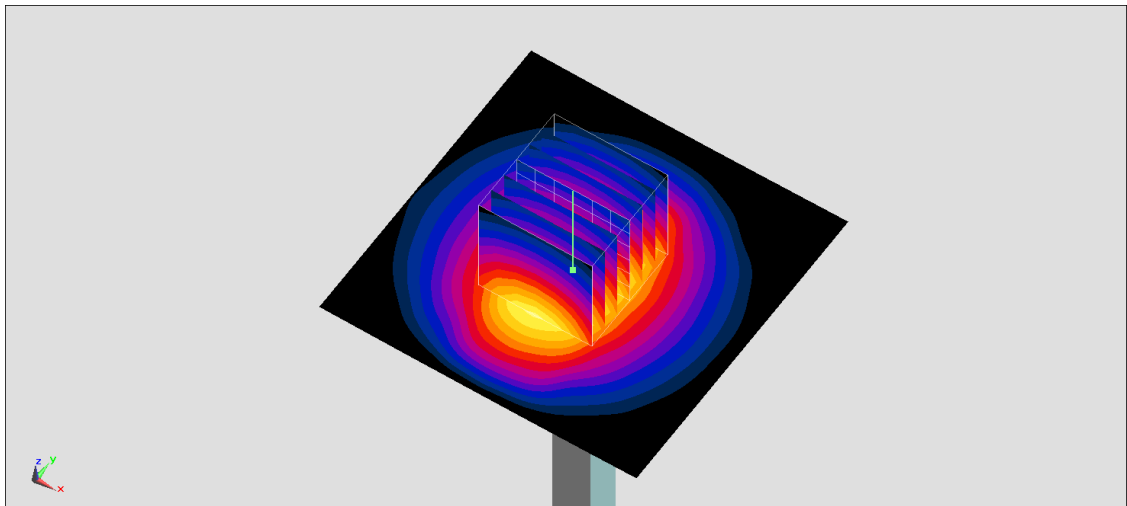
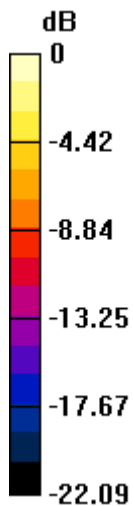
**Pin=50mW/Zoom Scan (7x7x7)/Cube 0:** Measurement grid: dx=5mm, dy=5mm, dz=5mm

Reference Value = 49.37 V/m; Power Drift = -0.01 dB

Peak SAR (extrapolated) = 5.24 W/kg

**SAR(1 g) = 2.52 W/kg; SAR(10 g) = 1.16 W/kg**

Maximum value of SAR (measured) = 4.24 W/kg



0 dB = 4.24 W/kg = 6.27 dBW/kg

## System Check\_Head\_5250MHz

### DUT: D5GHzV2-1128

Communication System: CW; Frequency: 5250 MHz; Duty Cycle: 1:1

Medium: HSL\_5G\_220324 Medium parameters used:  $f = 5250$  MHz;  $\sigma = 4.822$  S/m;  $\epsilon_r = 36.529$ ;  $\rho = 1000$  kg/m<sup>3</sup>

Ambient Temperature : 23.6 °C; Liquid Temperature : 22.6 °C

### DASY5 Configuration

- Probe: EX3DV4 - SN3925; ConvF(5.7, 5.7, 5.7) @ 5250 MHz; Calibrated: 2021/4/23
- Sensor-Surface: 1.4mm (Mechanical Surface Detection)
- Electronics: DAE4 Sn1311; Calibrated: 2021/8/20
- Phantom: ELI v4.0\_LEFT; Type: QDOVA001BB; Serial: TP:1025
- Measurement SW: DASY52, Version 52.10 (4); SEMCAD X Version 14.6.14 (7483)

**Pin=50mW/Area Scan (71x71x1):** Interpolated grid: dx=1.000 mm, dy=1.000 mm

Maximum value of SAR (interpolated) = 9.28 W/kg

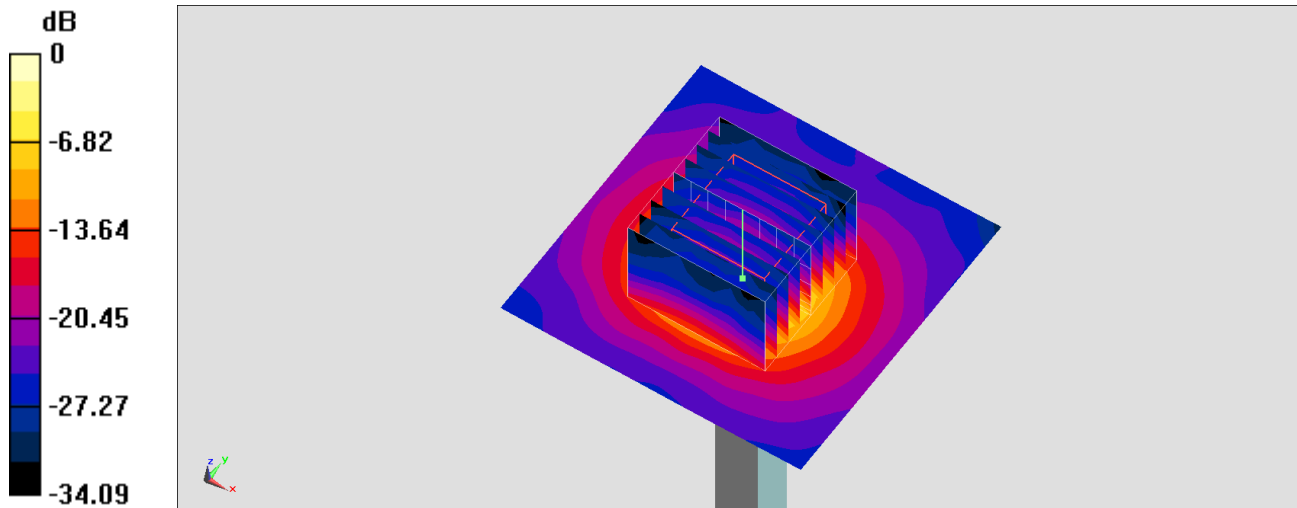
**Pin=50mW/Zoom Scan (9x9x7)/Cube 0:** Measurement grid: dx=4mm, dy=4mm, dz=1.4mm

Reference Value = 47.87 V/m; Power Drift = -0.08 dB

Peak SAR (extrapolated) = 16.0 W/kg

**SAR(1 g) = 3.96 W/kg; SAR(10 g) = 1.14 W/kg**

Maximum value of SAR (measured) = 9.82 W/kg



0 dB = 9.82 W/kg = 9.92 dBW/kg

## System Check\_Head\_5600MHz

### DUT: D5GHzV2-1128

Communication System: CW; Frequency: 5600 MHz; Duty Cycle: 1:1

Medium: HSL\_5G\_220324 Medium parameters used:  $f = 5600$  MHz;  $\sigma = 5.192$  S/m;  $\epsilon_r = 35.981$ ;  $\rho = 1000$  kg/m<sup>3</sup>

Ambient Temperature : 23.6 °C ; Liquid Temperature : 22.6 °C

### DASY5 Configuration

- Probe: EX3DV4 - SN3925; ConvF(4.99, 4.99, 4.99) @ 5600 MHz; Calibrated: 2021/4/23
- Sensor-Surface: 1.4mm (Mechanical Surface Detection)
- Electronics: DAE4 Sn1311; Calibrated: 2021/8/20
- Phantom: ELI v4.0\_LEFT; Type: QDOVA001BB; Serial: TP:1025
- Measurement SW: DASY52, Version 52.10 (4); SEMCAD X Version 14.6.14 (7483)

**Pin=50mW/Area Scan (71x71x1):** Interpolated grid: dx=1.000 mm, dy=1.000 mm

Maximum value of SAR (interpolated) = 10.5 W/kg

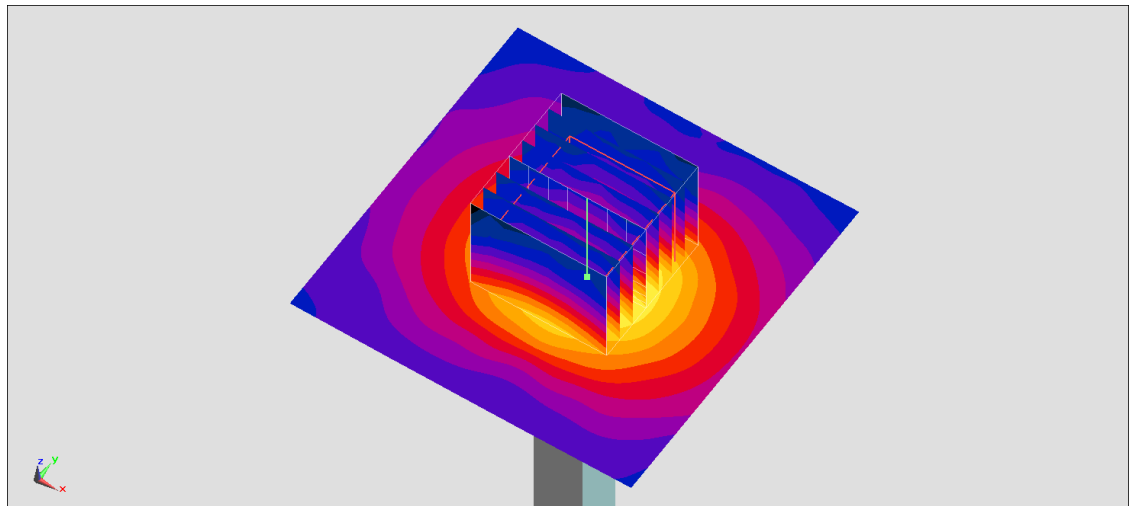
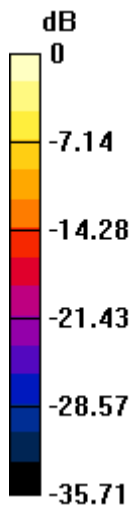
**Pin=50mW/Zoom Scan (8x8x7)/Cube 0:** Measurement grid: dx=4mm, dy=4mm, dz=1.4mm

Reference Value = 45.78 V/m; Power Drift = -0.18 dB

Peak SAR (extrapolated) = 17.9 W/kg

**SAR(1 g) = 4.12 W/kg; SAR(10 g) = 1.17 W/kg**

Maximum value of SAR (measured) = 10.7 W/kg



0 dB = 10.7 W/kg = 10.29 dBW/kg

## System Check\_Head\_5750MHz

### DUT: D5GHzV2-1128

Communication System: CW; Frequency: 5750 MHz; Duty Cycle: 1:1

Medium: HSL\_5G\_220324 Medium parameters used:  $f = 5750$  MHz;  $\sigma = 5.36$  S/m;  $\epsilon_r = 35.764$ ;  $\rho = 1000$  kg/m<sup>3</sup>

Ambient Temperature : 23.6 °C ; Liquid Temperature : 22.6 °C

### DASY5 Configuration

- Probe: EX3DV4 - SN3925; ConvF(5.16, 5.16, 5.16) @ 5750 MHz; Calibrated: 2021/4/23
- Sensor-Surface: 1.4mm (Mechanical Surface Detection)
- Electronics: DAE4 Sn1311; Calibrated: 2021/8/20
- Phantom: ELI v4.0\_LEFT; Type: QDOVA001BB; Serial: TP:1025
- Measurement SW: DASY52, Version 52.10 (4); SEMCAD X Version 14.6.14 (7483)

**Pin=50mW/Area Scan (71x71x1):** Interpolated grid: dx=1.000 mm, dy=1.000 mm

Maximum value of SAR (interpolated) = 10.0 W/kg

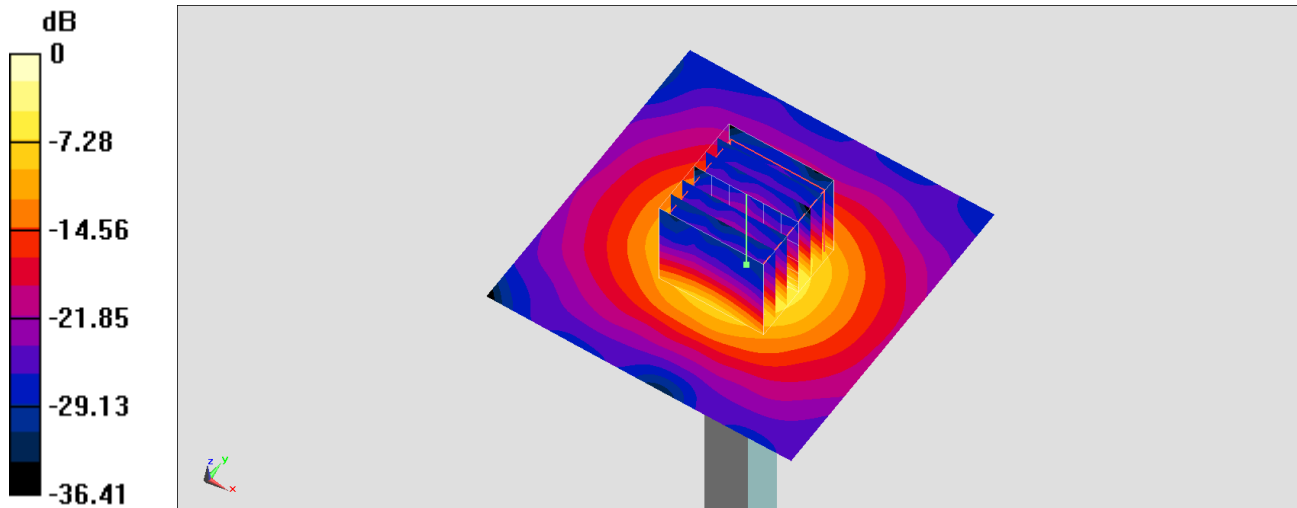
**Pin=50mW/Zoom Scan (7x7x7)/Cube 0:** Measurement grid: dx=4mm, dy=4mm, dz=1.4mm

Reference Value = 47.80 V/m; Power Drift = -0.07 dB

Peak SAR (extrapolated) = 18.1 W/kg

**SAR(1 g) = 4.06 W/kg; SAR(10 g) = 1.16 W/kg**

Maximum value of SAR (measured) = 10.6 W/kg



0 dB = 10.6 W/kg = 10.25 dBW/kg

## System Check\_Head\_6500MHz

### DUT: D6.5GHzV2-1003

Communication System: CW; Frequency: 6500.0

Medium: HSL\_6G\_220325 Medium parameters used:  $f = 6500.0$  MHz;  $\sigma = 5.92$  S/m;  $\epsilon_r = 35.1$

Ambient Temperature: 23.5°C; Liquid Temperature: 22.5°C

#### DASY6 Configuration:

- Probe: EX3DV4 - SN3976; ConvF(5.8, 5.8, 5.8); Calibrated: 2022-01-27
- Sensor-Surface: 1.4 mm
- Electronics: DAE4 Sn778; Calibrated: 2021-05-21
- Phantom: ELI V5.0 (20deg probe tilt); Serial: 1311; Section: Flat
- Measurement Software: cDASY6 V6.6.0.13926
- UID: , 0--
- MAIA: Area Scan: N/A; Zoom Scan: N/A

**Pin=100mW/Area Scan (51.0 mm x 85.0 mm):** Measurement Grid: 8.5 mm x 8.5 mm

SAR (1g) = 25.7 W/kg; SAR (10g) = 5.06 W/kg;

**Pin=100mW/Zoom Scan (32.8 mm x 32.8 mm x 22.0 mm):** Measurement Grid: 3.4 mm x 3.4 mm x 1.4 mm

Power Drift = -0.17 dB

SAR (1g) = 28.7 W/kg; SAR (10g) = 5.49 W/kg;

