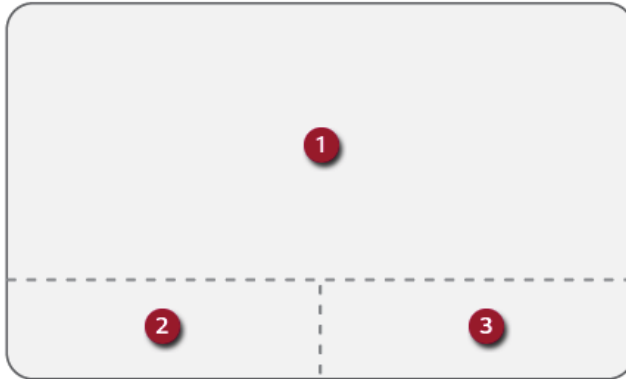


Using the Touchpad

ENGLISH

The built-in touchpad provides the same functionality as an external mouse. You can use the touchpad and USB mouse simultaneously.



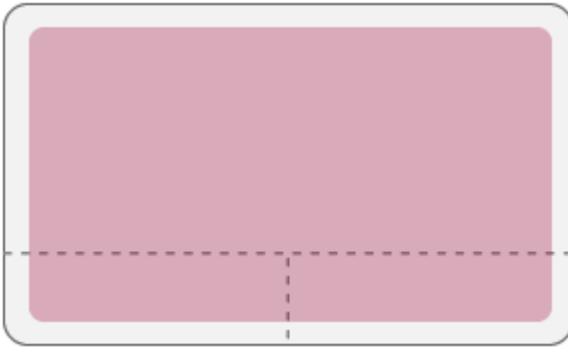
- 1 Touchpad
 - Moves the cursor.
- 2 Left button
 - Use to select or execute programs.
- 3 Right button
 - Functions as the right button of a mouse in most cases. However, the usage may differ depending on programs.

TIP

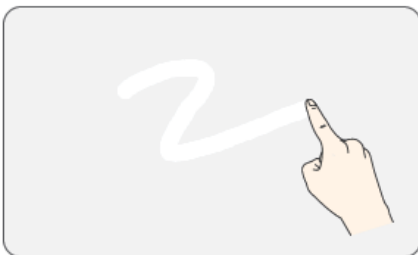
The scroll function is provided as a gesture. Please refer to the Touchpad Gesture section of this document.

Precautions for Using the Touchpad

- If you are using a touchpad, use the area marked with a red line shown below. Touching an edge or border of the touchpad may not work. (The functioning touch area may differ depending on the product.)

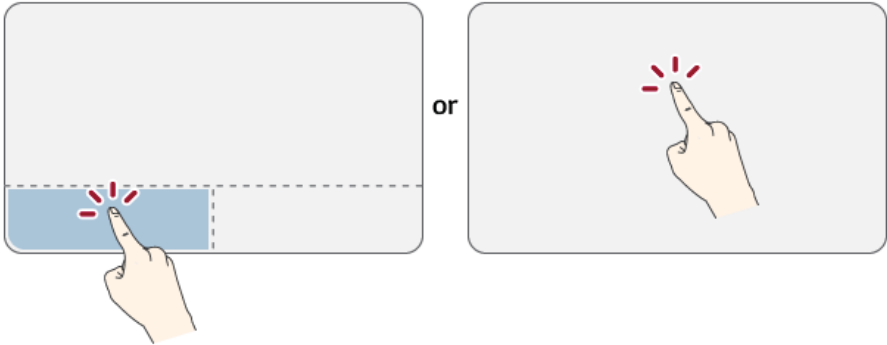
**Moving the Cursor (Pointer) on the Screen**

Place a finger on the touchpad and glide the finger.



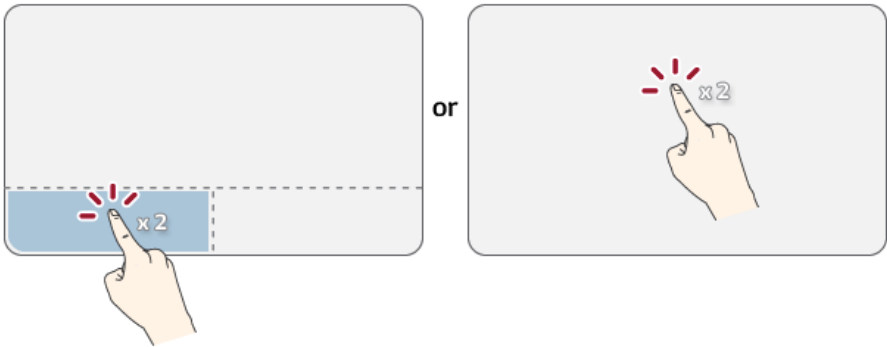
Click (Select)

Press and release the left button swiftly with a finger. (Or tap the touchpad once.)
Do this, for example, to select a menu or icon and to place the cursor to type on a word processor file.



Double-click (Execute)

Press the left button twice consecutively and release the button. (Or tap the touchpad twice.)
Do this, for example, to run a program after selecting its execution file (or icon).



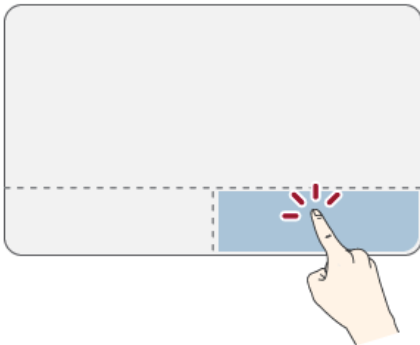
**CAUTION****Notes on Using the Touchpad**

- Do not use a sharp object such as a pen on the pad nor peel the cover. It may cause an impairment.
- Do not place more than one finger, and do not use while wearing a glove or when the hand is wet. The Touchpad will not work properly. Oil or dirt at the fingertip can also cause an impairment.
- The touchpad is sensitive. Do not impose excessive force or maintain an uncomfortable position. Otherwise, it may result in a finger or wrist injury.

Right button

Press and release the right button swiftly.

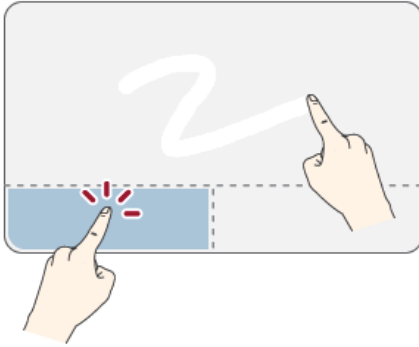
Functions as the right button of a mouse, but the usage may differ depending on programs.

**Drag & Drop**

To drag, click and hold an icon, and move it to another location.

To drop, release the dragged icon in the location you want.

To move a file icon to another folder or to **Recycle Bin**, place the cursor (or the pointer) on the icon, press and hold the left button, and glide another finger on the touchpad until the icon reaches the aimed location. After reaching the destination, release the left button.




- 1 Drag
 - Glide one finger on the pad with another finger pressing and holding the left button.
- 2 Drop
 - Release the left button to drop it into the **Recycle Bin**. (By using this, you can drop a file into the **Recycle Bin** at will.)

ClickLock

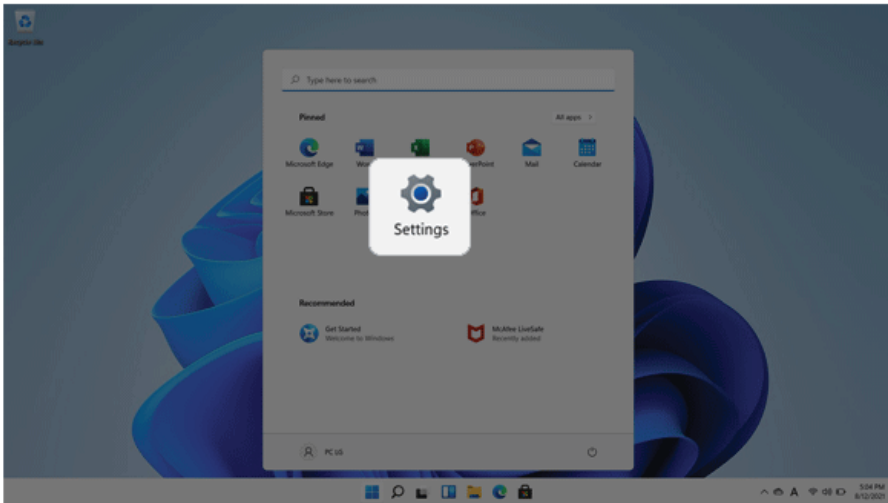
When activated, this feature allows you to drag/scroll without pressing and holding the left button.

- 1 Select the Start button [] > [Settings].

Tip TIP

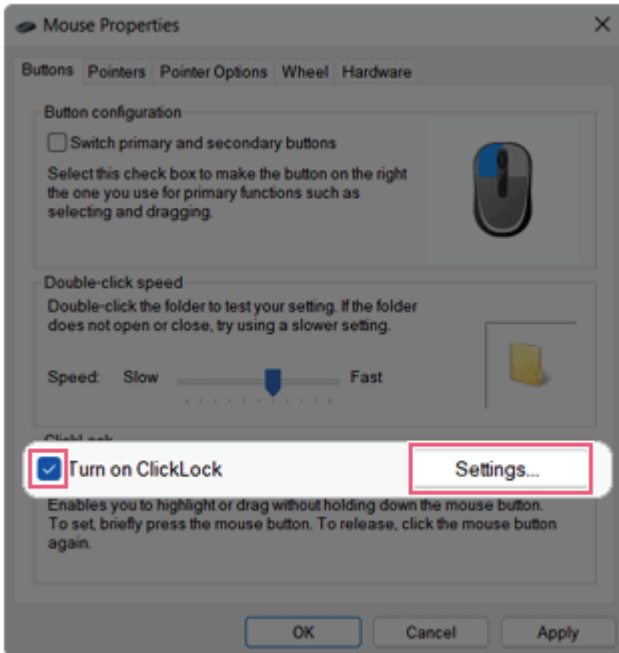
Press the [] key or [Ctrl] + [Esc] on the keyboard to display the Start screen.

ENGLISH

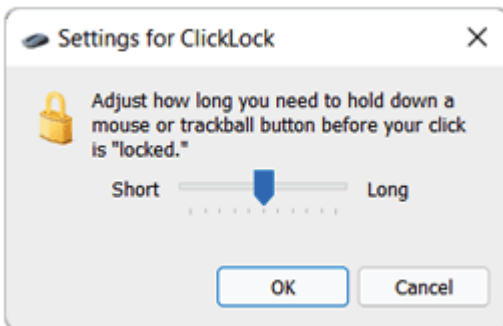


- 2 Select [Bluetooth & devices] > [Mouse] > [Additional mouse settings].

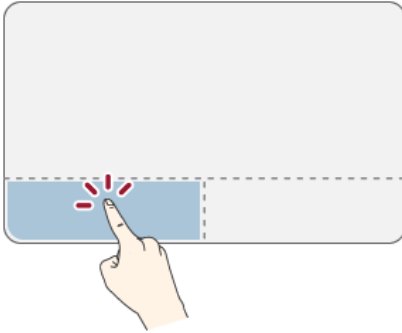
3 Check [Turn on ClickLock] and select [Settings].



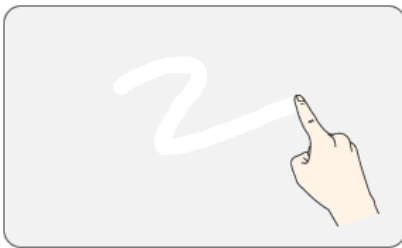
4 Set the duration of ClickLock operation.



- 5 Press the left button of the touchpad and release it to change the button into the pressed state.



- 6 Move on the touchpad to use the drag/scroll feature.



- 7 Press the left mouse button to turn off the ClickLock.

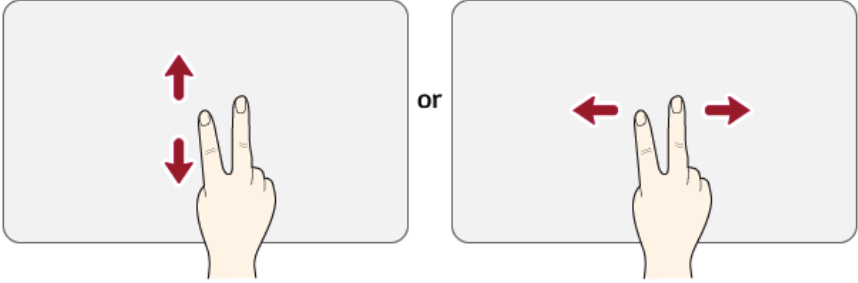
Touchpad Gesture

The touchpad gesture feature allows you to use Windows programs more easily by utilizing multi-touch functions.

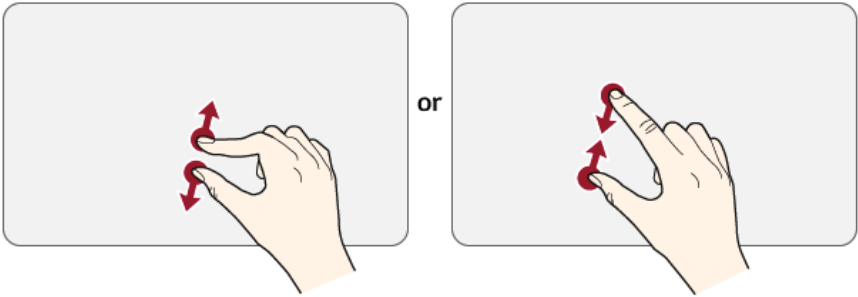
Windows 11 Touchpad Gestures allow you to use the PC more easily.

The touchpad gesture feature may not be supported in some models.

- Place two fingers on the touchpad and move up/down/left/right to scroll the screen. (It operates only on an app or screen which scrolling is available.)



- Place two fingers on the touchpad and widen or narrow them to zoom out or in.




Setting Touchpad

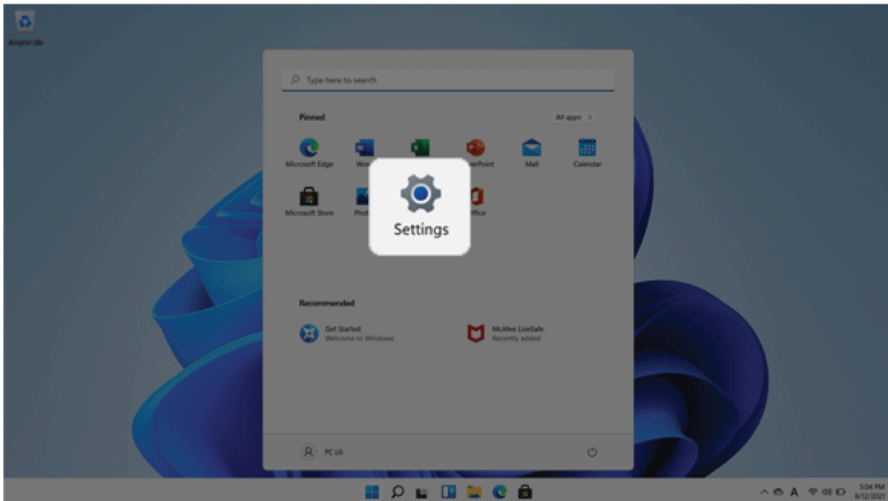
You can change the touchpad features or enable/disable the gesture feature.

The figures herein may differ by language selection and are subject to change without prior notice.

- 1 Select the Start button [] > [Settings].

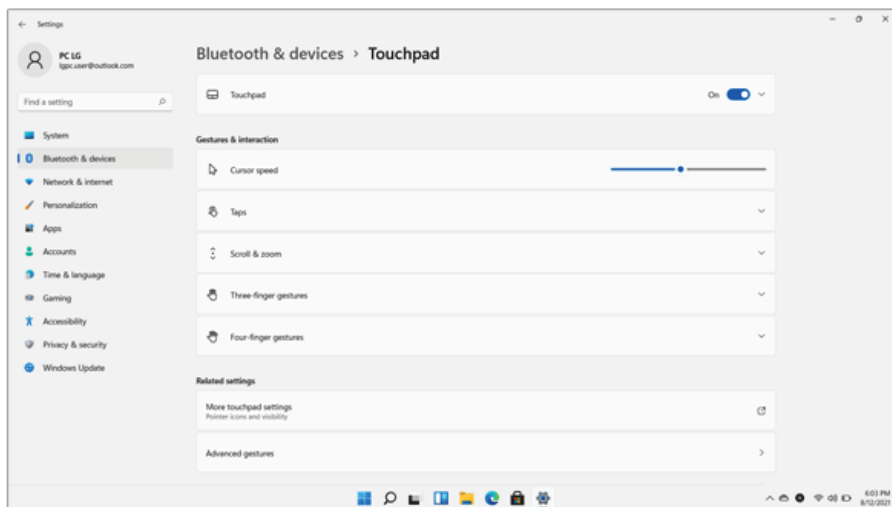
Tip TIP

Press the [] key or [Ctrl] + [Esc] on the keyboard to display the Start screen.



- 2 Select the [Bluetooth & devices] > [Touchpad].

- 3 Change the settings as needed on the [Touchpad] item.



Connecting to External Display

Connecting to the HDMI Port

HDMI is a multimedia interface that can integrate and transmit video and audio signals.

In some models, DTS Audio may not work when you use HDMI.

Tip TIP


Ensure the monitor power is off before connecting the external monitor to the PC.
HDMI support both HDCP 1.4 and HDCP 2.3.

- 1 Connect the HDMI cable to the PC and the external device (TV, monitor) that supports HDMI.
- 2 HDMI port transfers both video and audio simultaneously. Hence, there is no need for a separate audio connection.



- 3 On the PC, press [Fn] + [F7] to display monitor (projector) toggling screen. Select the desired screen output.

Tip TIP

- Everytime [] + [P] keys are pressed, the screen output option changes. Release the keys to display the selected screen output.



CAUTION

- If you do not set Speaker as the default value after disconnecting the HDMI cable, the system may not produce any sound.
- If a program was running already, you must exit and restart the program to produce sound.

Connecting to Wireless Display

The wireless display feature connects the PC screen and sound to a display (TV, projector, etc.).


OPTION

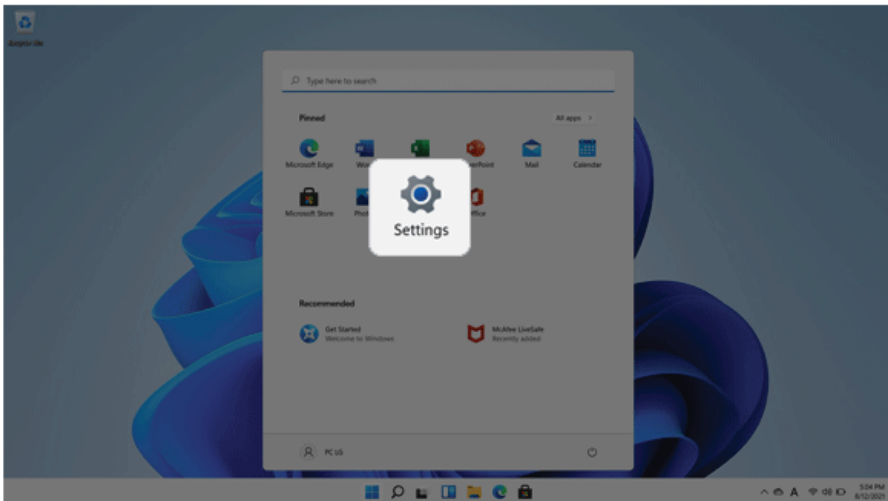
- To use the wireless display feature, the display device must support this feature.
- To connect to the display device that does not support wireless display, you must separately purchase a wireless display connection device.
- Once the wireless display connection is established, no additional procedures and searching are necessary the next time you try to connect.

Connecting to Wireless Display

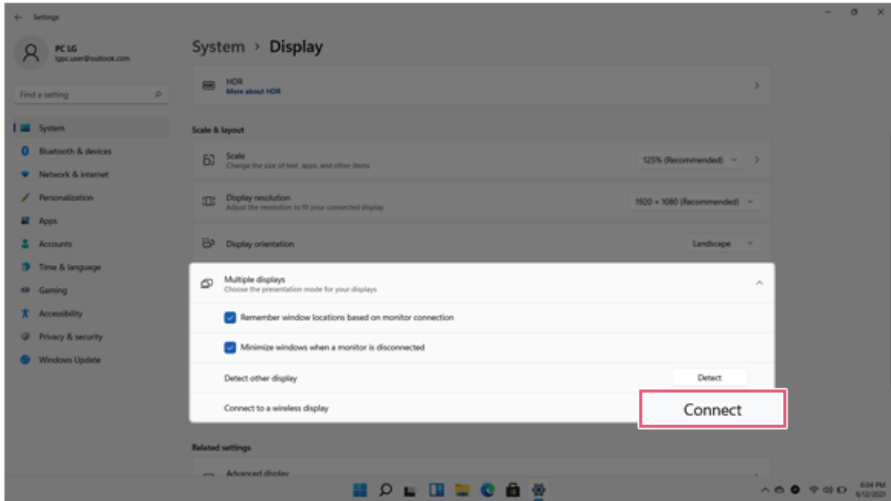
- 1 Select the Start button [] > [Settings].

TIP

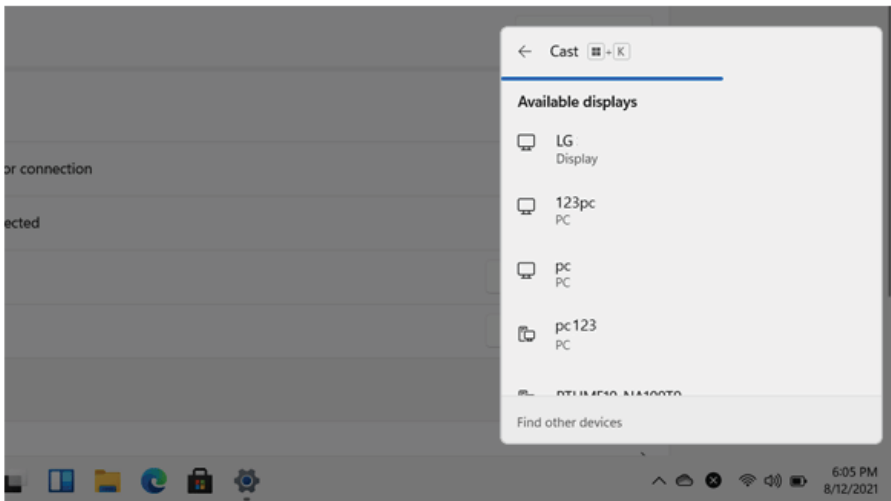
Press the [] key or [Ctrl] + [Esc] on the keyboard to display the Start screen.



- 2 Select [Connect] under the [System] > [Display] > [Multiple displays] > [Connect to wireless display] menu.



- 3 If the device search screen appears, it will search for nearby wireless display devices.



- 4 Select an available device and connect the device.

- 5 Once the wireless display device is connected, it outputs the PC screen and its sound.

Using the USB-C™ (Thunderbolt™) Port

The USB-C™ port mounted on this product supports USB 4.0 Gen 3x2 standards.

With the USB-C™ port, you can connect USB devices, charge external devices, and output the display screen.

 **TIP**

The names of USB versions have changed from USB 3.0 (or USB 3.1 Gen 1) and USB 3.1 (or USB 3.1 Gen 2) to USB 3.2 Gen 1x1 and USB 3.2 Gen 2x1.



CAUTION

Charging the notebook PC battery via the USB-C™ port is not supported.

Connecting a USB Device

If a USB device is connected to a USB-C™ port, the port works as an ordinary USB port.

 **TIP**

To use a conventional USB device, a separate conversion adapter should be used.
(Conversion adapters may be purchased separately.)

Outputting to an External Display

By connecting a display that supports USB-C™ Alternate Mode, you can use the USB-C™ port to output a screen to an external display.

 **TIP**

Alternate Mode is a mode that uses display outputs such as DP (Display Port) and HDMI through the USB-C™ port.

We support DisplayPort (DP) interface standards.

It supports both HDCP 1.4 and HDCP 2.3.



CAUTION

You must use a cable that supports **Alternate Mode** to output a screen to another display.

If you use USB-C™ accessories (cables, interface adapters, etc.) that are used for other products, you may have compatibility problems (no screen output or a malfunction).

Charging External Device

You can connect an external device to the USB-C™ port to charge it.

- The external devices that use the USB-C™ port support 10 W (5 V / 2 A) and 15 W (5 V / 3 A).
- A USB device compatible with USB PD (Power Delivery) supports charging at 15 W (5 V / 3 A), whereas a regular USB device supports charging at 10W (5 V / 2 A).
- Always-On Charging is supported only with USB-C™ ports, but not with the regular USB ports.
- If you connect an AC adapter while the notebook PC is being used to charge an external device, it may take more time to charge the notebook PC.

Tip TIP

The charging status of the external device being charged is not displayed on the notebook PC. If you connected a smartphone, you should select "Charge mobile phone" on the smartphone screen to charge the phone battery.

Connecting a Thunderbolt™ Device

You can connect to the USB-C™ port an external display or a high-performance data device that support the Thunderbolt™ specifications.

Depending on the specifications of the device connected to the USB-C™ port, it acts as a USB or Thunderbolt™ device.

Tip TIP

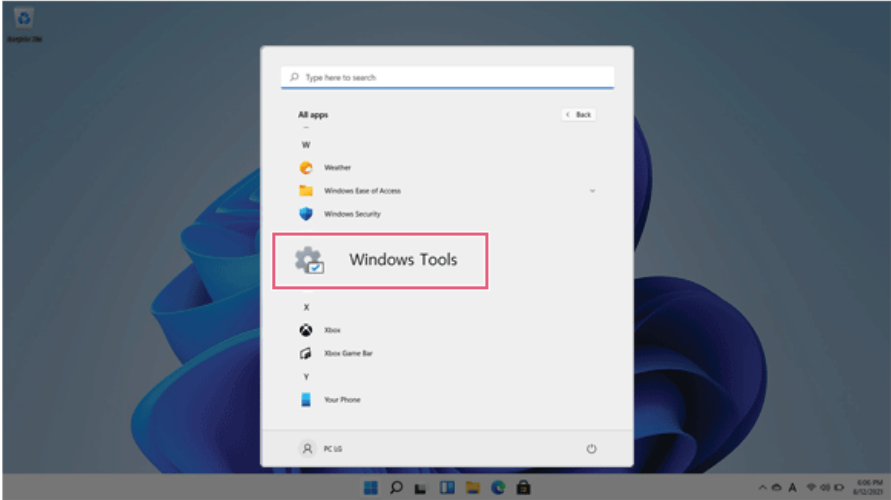
The Thunderbolt™ cable is not provided with the product. Make sure that you use a certified cable.

Some functions may not be available depending on the product. For more information, refer to the user manual provided with the device to be connected.

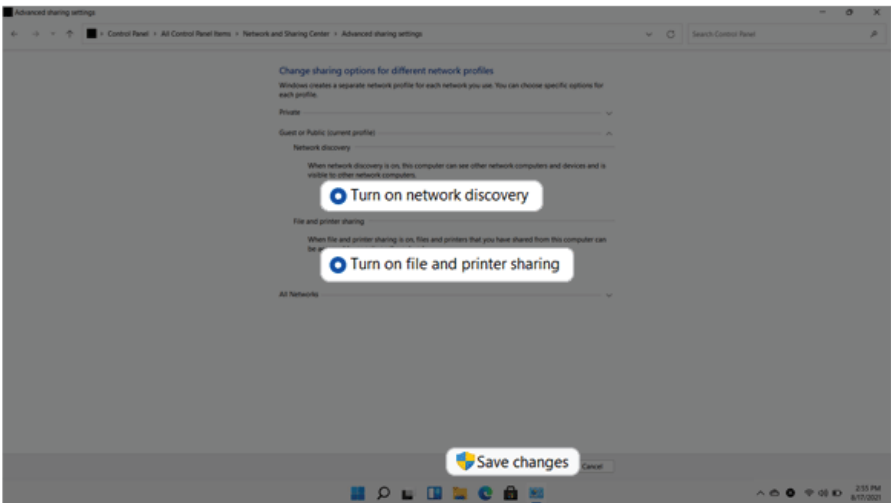
Connecting two notebook PCs that support Thunderbolt™

Use Thunderbolt™ to connect two PCs easily and quickly and send and receive data between them.

- 1 Select the Start button [] > [All apps] > [Windows Tools].

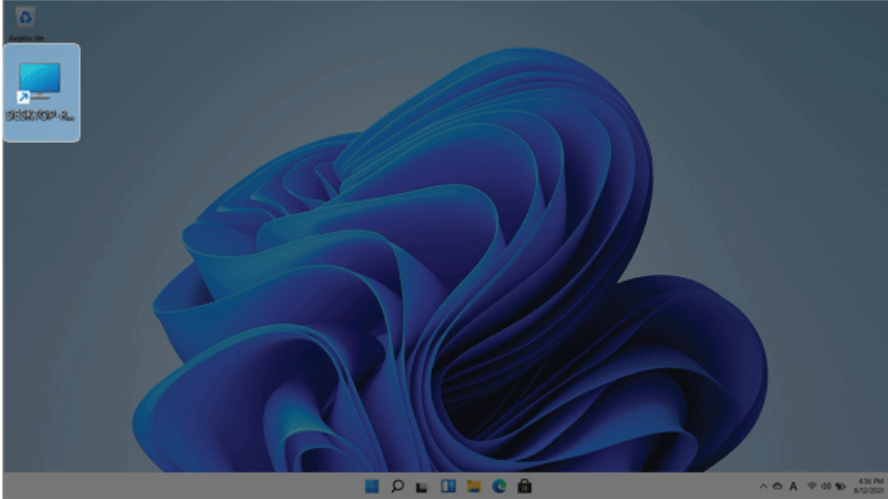


- 2 Select [Control Panel] > [Network and Sharing Center] > [Change advanced sharing settings].
- 3 Enable [Change sharing options for different network profiles] and save the changes.



- 4 Use the Thunderbolt™ cable to connect two notebook PCs.

- 5 A while later, an icon of the connected computer appears on the desktops of the two notebook PCs.





- 6 Double-click the connected computer icon to open the authentication screen.
- 7 Input the user name and password to connect to the other PC.

Tip TIP

If there is no shared folder in the connected PC, nothing may appear on the screen.

Bluetooth

Bluetooth allows the user to access wirelessly various devices such as camera, cell phone, headset, printer, and GPS receiver that support Bluetooth . It can also establish a network and exchange data with other Bluetooth -enabled PC or smartphone.

 **OPTION**


The Bluetooth device is optional, and it may not be available in some models.

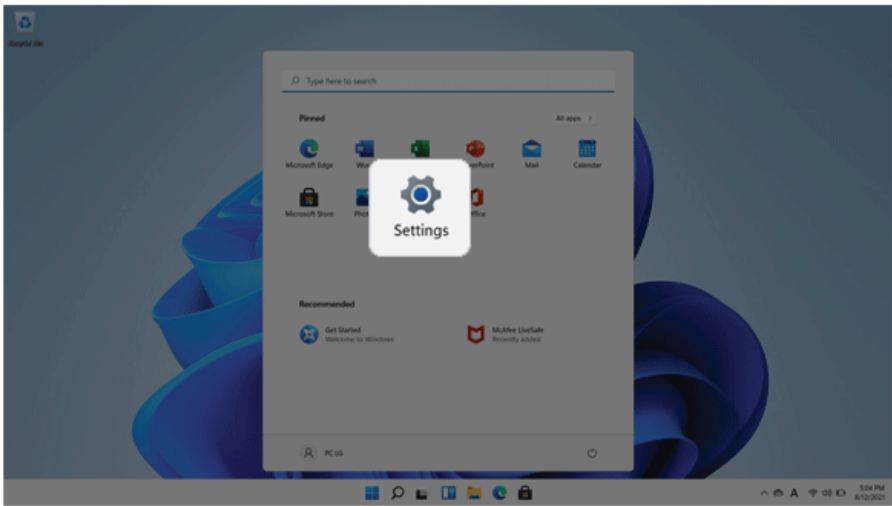
The figures herein may differ by language selection and are subject to change without prior notice.

For details on connecting a Bluetooth device, refer to the user manual provided with the Bluetooth device.

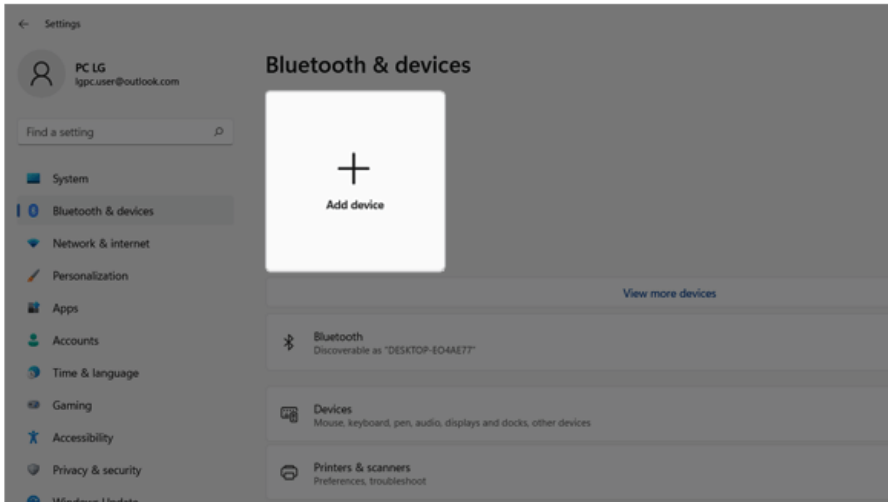
- 1 Select the Start button [] > [Settings].

 **TIP**

Press the [] key or [Ctrl] + [Esc] on the keyboard to display the Start screen.



- 2 Select [Bluetooth & devices] > [Add device].



- 3 Select the **Bluetooth** to search for Bluetooth devices automatically.

ENGLISH



- 4 After selecting the device you want to connect, complete the Bluetooth connection as guided.


Wired LAN

LAN is the network environment that users can connect to by using a cable to connect to their internet providers or the company's network.

Using Wired LAN

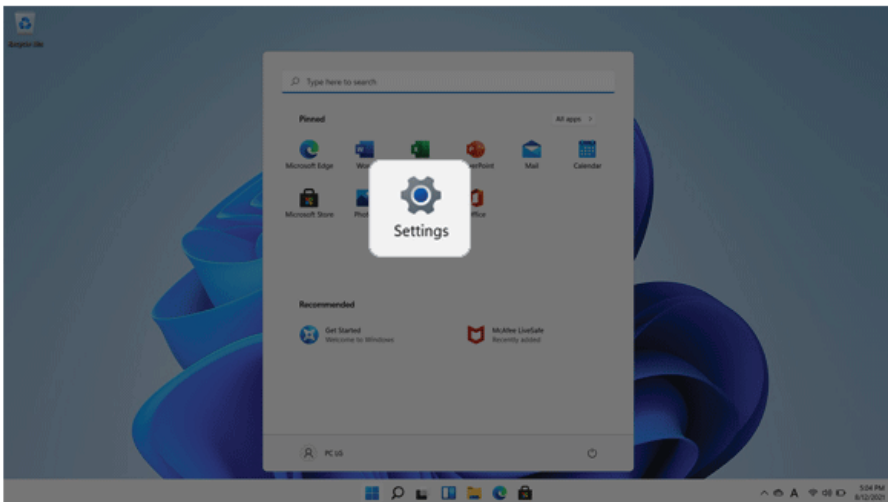
LAN is installed with an automatic IP (DHCP) as default value.

Please refer to the following instructions for details on setting up an automatic IP (DHCP) or manual IP.

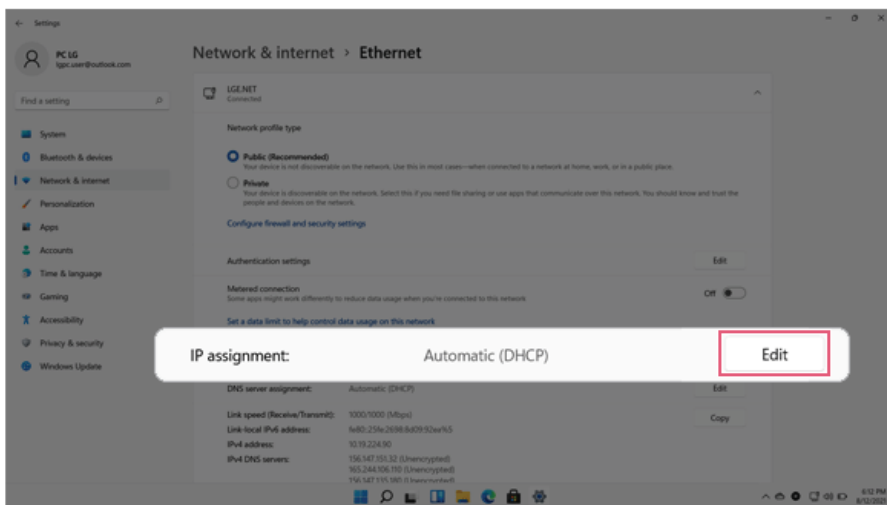
- 1 Connect the wired LAN cable to the LAN port.
- 2 Press the [] button and select the [Settings] menu.

 **TIP**

Press the [] key or [Ctrl] + [Esc] to display the Start menu.



- 3 Select [Edit] in [Network & Internet] > [Ethernet] > [IP assignment].



- To use an automatic IP (DHCP), select [Automatic]. If you wish to use a static IP, set [Manual] > [IPv4] to [On] and enter the necessary item.

Contact the network service provider or administrator to use a static IP.

Edit IP settings

Manual

IPv4

On

IP address

Subnet mask

Gateway

Preferred DNS

Preferred DNS encryption

Unencrypted only

Alternate DNS

Save Cancel

- Select [Save] to complete the network setup.
- Click the Web Browser icon to check whether the internet is operating normally.

Wireless LAN

The wireless network (Wireless LAN) is the network environment that connects a PC with the internet provider or company network through an Access Point (wireless or regular router).



OPTION

Wireless LAN is optional. Hence, it may not be installed in some models.

Turning On/Off **Airplane Mode**

Prior to using the wireless LAN, press [Fn] + [F6] to turn off **Airplane Mode**.

Pressing [Fn] + [F6] keys will turn on or off the **Airplane Mode**. If you are not going to use the product for a while, keep the **Airplane Mode** turned on to reduce the battery power consumption.

Using the Wireless LAN

If an Access Point (wired or wireless router) is in the vicinity of the PC, the wireless LAN can easily be accessed.

When searching for a wireless LAN, multiple Access Points may be discovered depending on the location of use.

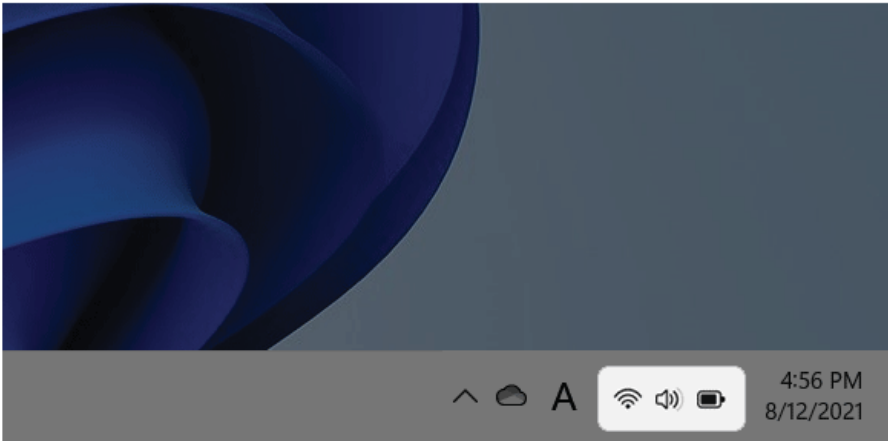
In case no accessible wireless LAN is near the PC, no Access Point might be found.

A password-protected Access Point cannot be accessed without the correct password.

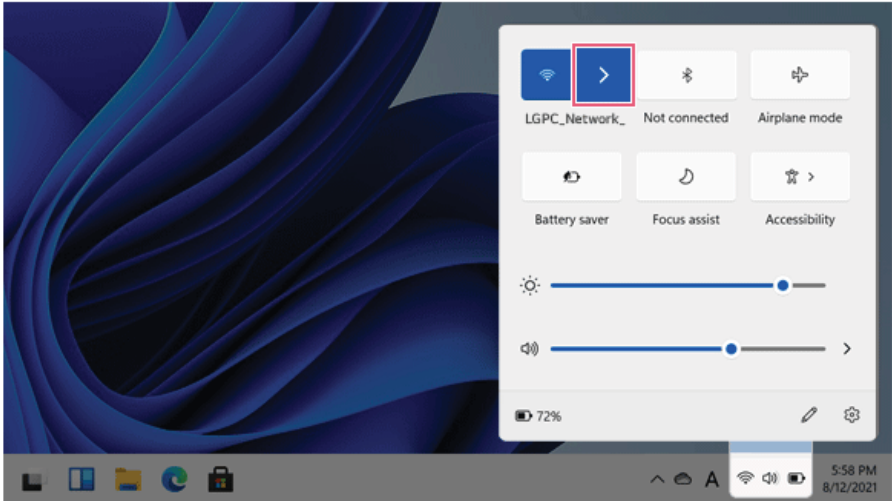
- 1 Select **[Quick Settings]** on the right side of the taskbar.

TIP

The displayed icons may differ from the figures herein.

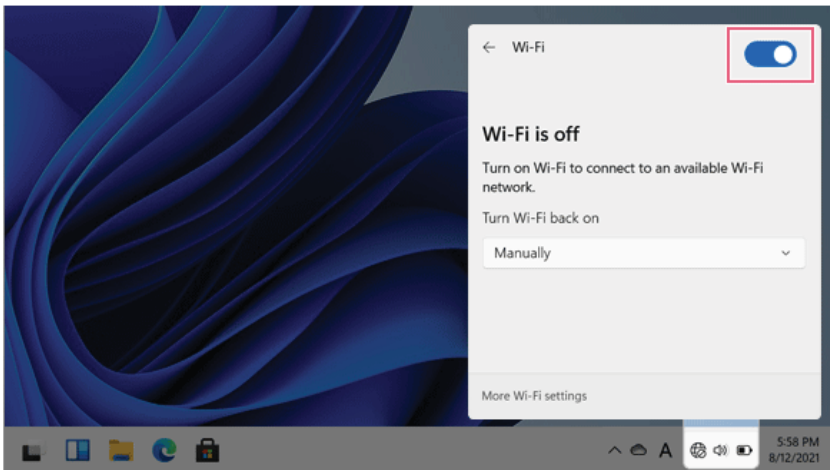


- 2 Select **Manage Wi-Fi Connections** [>] to search for near Access Point.

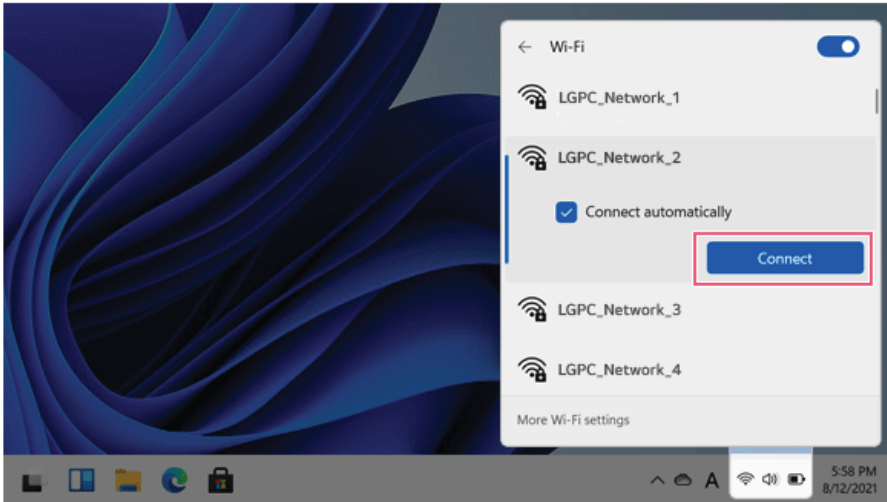


Tip

When **Wi-Fi** is turned off, set [Wi-Fi] to On.



- 3 Select the Access Point you want to connect to and press [Connect].



- 4 If a connection is established, [Connected] appears below the Access Point name.
- 5 Click the Web Browser icon to check whether the internet is operating normally.

Using a Wired/Wireless Router

A wireless / regular router connects several PCs and mobile devices to one internet line and enables the use of internet and the network.

A wireless / regular router has to be bought separately. Refer to the manual provided by the manufacturer for instructions.

Connecting a Wireless or Regular Router

If one internet line is used with a wired / wireless router and several devices are connected, this may result in a slower connection.

In case of a wireless LAN, it is recommended to change the network name and security settings for a more secure connection.

Network speed can differ according to operation environment and specifications.

- 1 Connect the internet cable of the modem that was provided by your internet provider to the router's WAN port.
- 2 Connect all devices (PC, IPTV, internet phone, etc.) with a LAN cable to LAN ports 1 to 4 of the router.

The number of LAN ports can vary for each router model.

- 3 Please refer to the manual provided by the router manufacturer for setup of the network and internet.

UFS/Micro SD Slot

Checking Available Memory Card

This model supports UFS and Micro SD memory cards.

- Directly applicable memory cards



UFS



micro SD

Mounting and Using Memory Card

This product supports one **UFS/Micro SD** slot.

Make sure that the insertion direction of the memory card is correct and push it in until the **UFS** or **Micro SD** memory card is fully seated.

**Tip** TIP

- When the memory card is formatted, the data stored in the memory card will be deleted. Check whether there are important data before formatting the memory stick.
- To format a memory card, right-click the memory card drive and select Format. When the Format window appears, press Start to continue.
- If the write protection tab of memory card is locked, the user cannot format the memory stick nor write or delete the data.
- **UFS** and **Micro SD** memory cards can be used only as data storage devices and do not support the copyright protection feature.

Removing Memory Card

Push the card with your finger to make the card spring out of the slot. Remove the memory card.

Using Software

UltraGear Studio

UltraGear Studio allows you to easily change your PC's performance, LED effects, power, and various other functions.

Tip TIP


Please update the program to the latest version through **LG Update Center**.

The figures herein are subject to change without prior notice.

UltraGear Studio Running

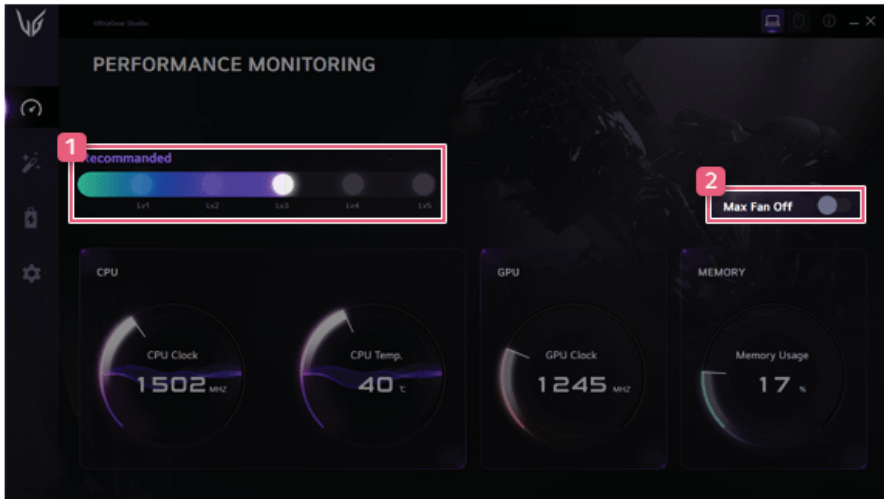
Select the Start button [] > [**All Apps**] and run [**UltraGear Studio**].

Tip TIP

Press the [] key and run **UltraGear Studio**.

PERFORMANCE MONITORING

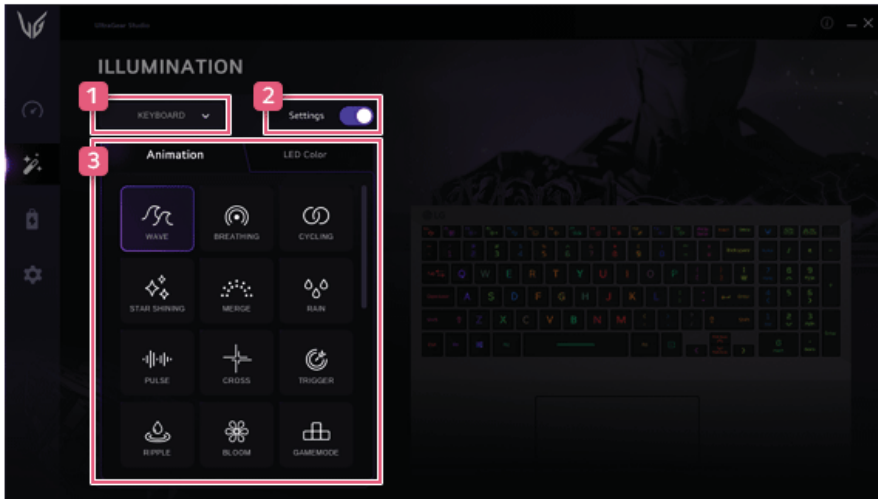
It allows you to set the performance mode step by step, and enables you to check the usage information of CPU, GPU, MEMORY.



- 1 **Performance Settings Slider:** Allows you to select and use a step-by-step performance mode.
- 2 **Max Fan On/off:** You can turn on or off the Max Fan function in performance mode Lv4, Lv5.

ILLUMINATION

Allows you to easily change various LED effects to use.



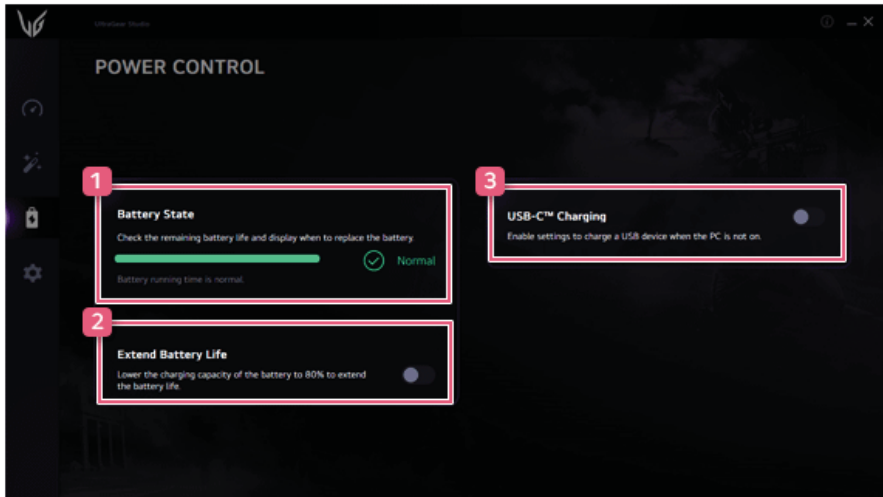
- 1 **KEYBOARD/COVER:** Selects keyboard or cover.
- 2 **TURN ON/OFF:** Turns the keyboard and cover LEDs on or off.
- 3 **Animation/LED Color:** Allows you to set the animation effect and color of the LED.

Tip TIP

You can only set the Animation effect on keyboard lighting.

POWER CONTROL

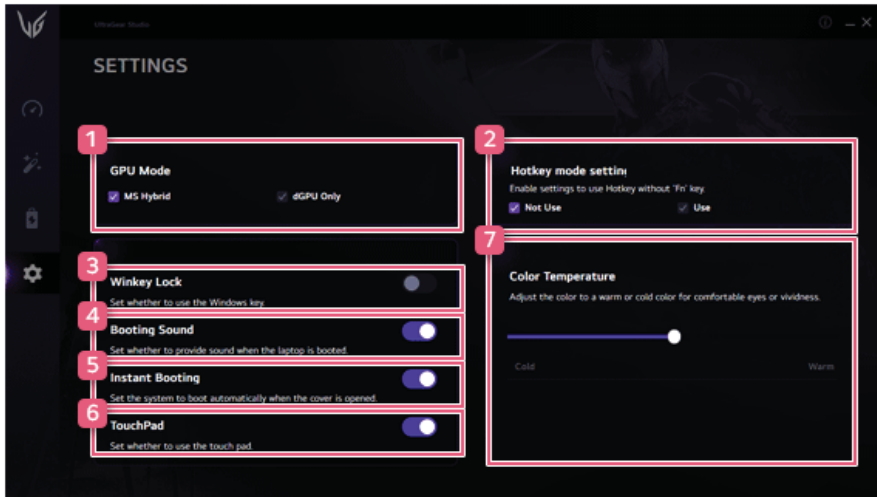
Allows you to set up your PC's battery and charging function.



- 1 **Battery State:** Allows you to measure the battery lifespan so that you can replace it timely.
- 2 **Extend Battery Life:** Allows you to increase the battery lifespan by lowering the battery charging level to 80% of the battery capacity.
- 3 **USB-C™ Charging:** Allows you to set the USB port so that you can perform charging using the USB-C™ port even when the PC is turned off.

SETTINGS

You can use this screen to configure various devices in your PC.



- 1 **GPU Mode:** You can change the GPU mode to **MS Hybrid** or **dGPU Only**.

Tip TIP

MS Hybrid: This automatically switches between the Intel graphics chipset and the NVIDIA graphics chipset to use.

dGPU Only: It operates at high performance using only NVIDIA graphics chipsets.

- 2 **Hotkey mode setting:** Allows you to set the hot keys (F1 - F12) to operate even without pressing Fn.
- 3 **Winkey Lock:** Allows you to set whether to lock the Windows key.
- 4 **Booting Sound:** Allows you to set whether to use the boot sound effect.
- 5 **Instant Booting:** You can set the system to automatically boot whenever you open the notebook PC.
- 6 **Touchpad:** Allows you to set whether to use the touchpad.
- 7 **Color Temperature:** The screen color can be set to cold (with a bluish tint) or warm (with a reddish tint).

FAQ

Q: Battery State displays "Warning".

- The battery is a consumable item and its lifespan may decrease depending on the usage frequency and environment. It is recommended that you visit the LG Electronics service center to have the battery replaced.

LG Update Center

LG Update Center allows you to install various PC drivers, applications and Windows patches easily.

Tip


It may not work properly depending on user preferences (security tools, etc.) and the network status.

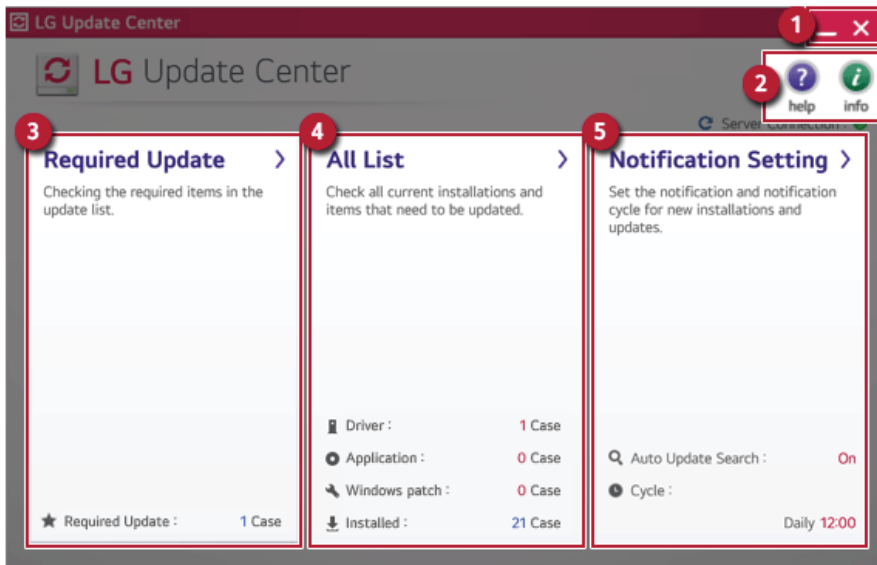
You can use the **LG Update Center** to quickly install the latest drivers, or reinstall any deleted drivers.

Use **LG Update Center** to keep your system current and optimized.

The figures herein are subject to change without prior notice.

Running LG Update Center

Select the Start button [] > [All apps] > [LG Software] and run [LG Update Center].



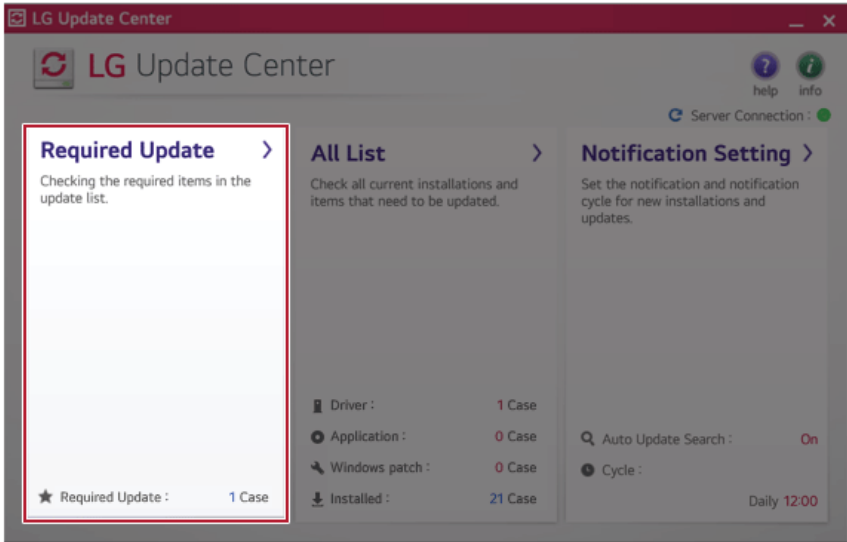
- 1 Minimize/Exit Button:** Minimizes the size of the window, or exits the software.
- 2 help/info Button:** Runs Help or displays information about the software.
- 3 Required Update:** Installs critical items that must be applied to the system.

- 4 **All List:** Displays and installs all required items for the system.
- 5 **Notification Setting:** Sets up notifications for online updates for installed items.

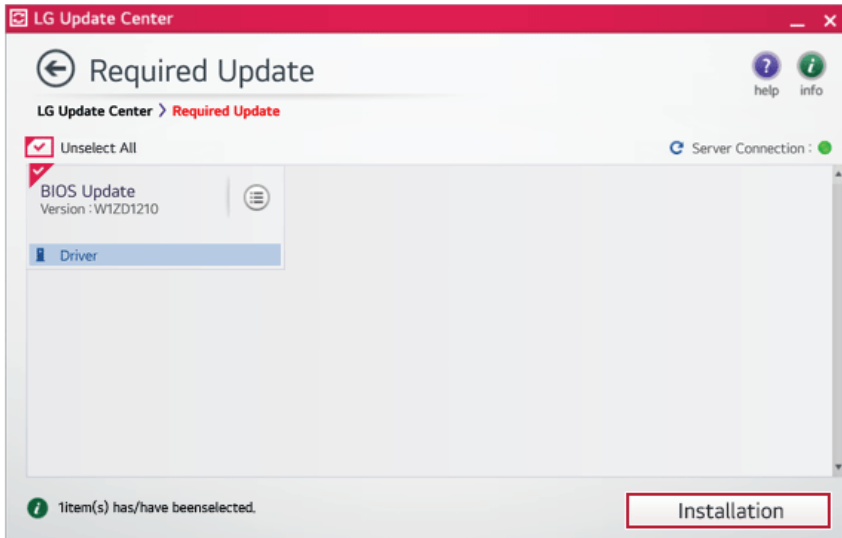
Required Update

You can install essential updates and drivers that are necessary for the system.

- 1 Select the [Required Update] menu.



- When the **Required Update** list appears, select the updates to install and press the [Installation] button.

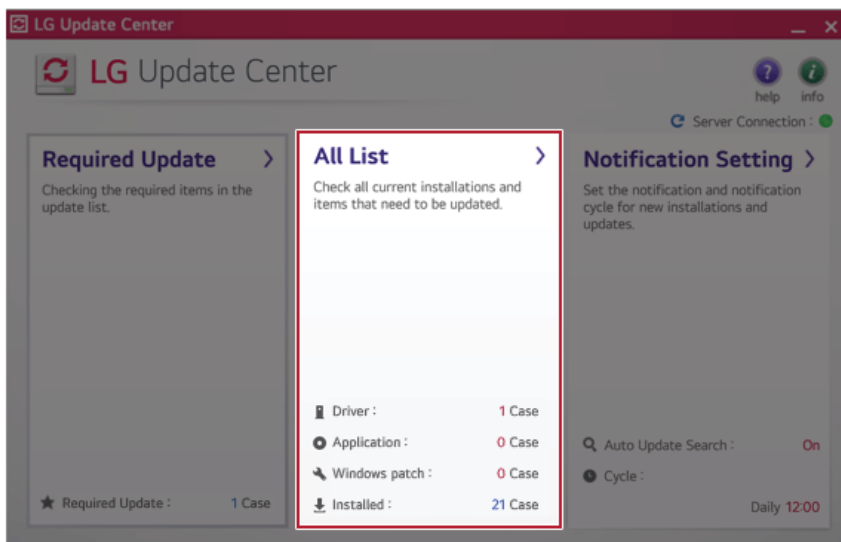
**Tip** TIP

All items are selected by default.

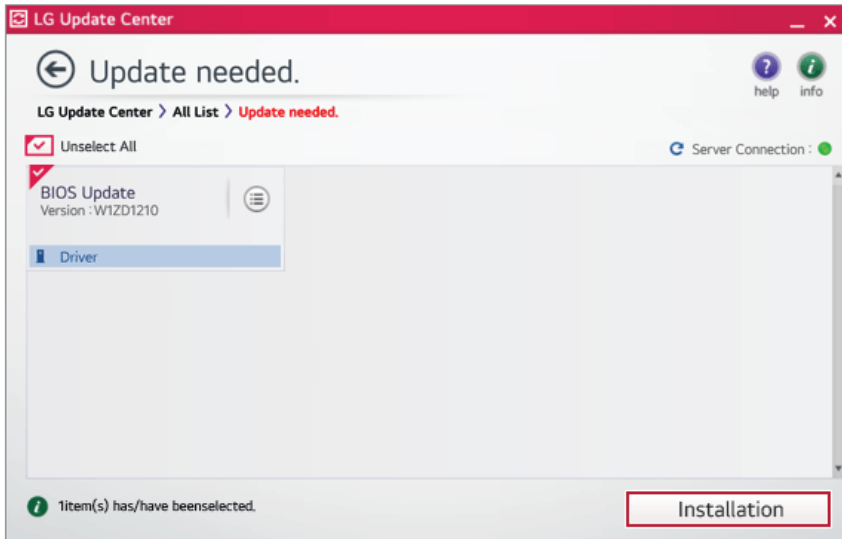
All List

You can install all updates and drivers that can be installed in the system.

- 1 Select the [All List] > [Update needed] menu item.



- 2 Select the updates to install and press the [Installation] button.



Tip TIP

All items are selected by default.

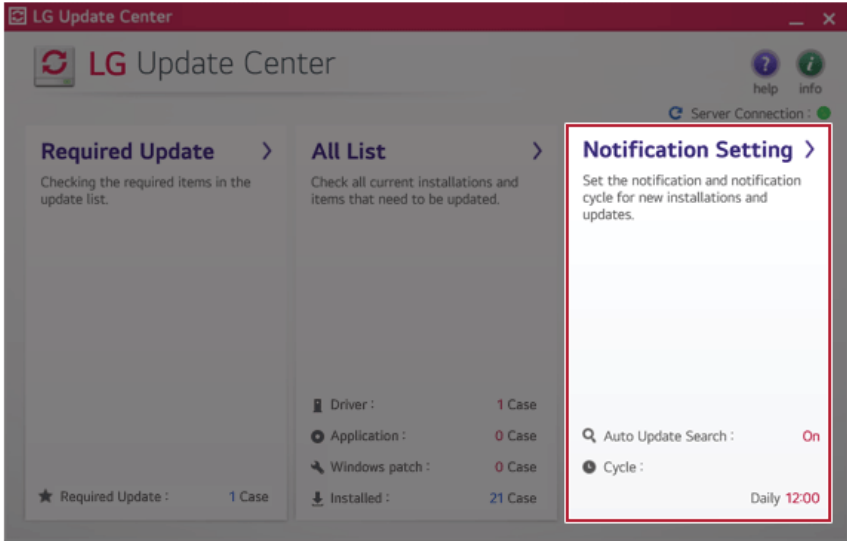
Notification Setting

You can check the critical updates to set whether to display the notifications for update installation.

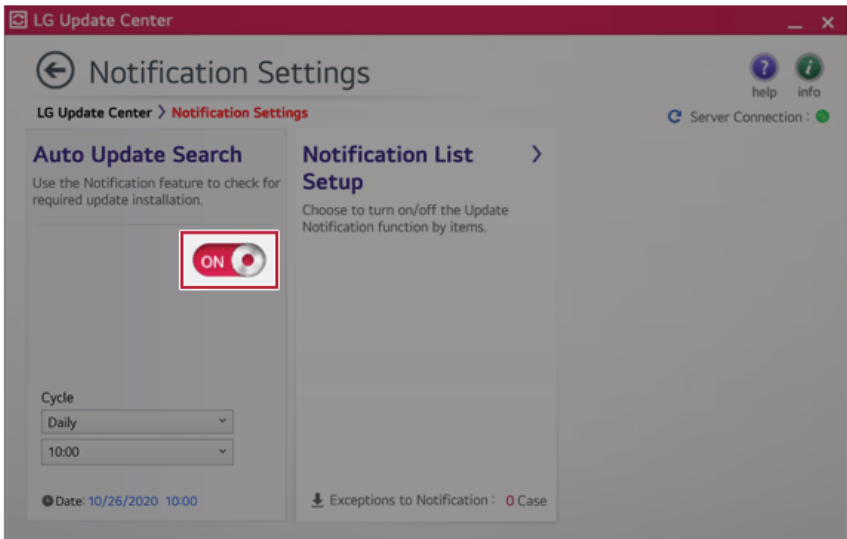
Tip TIP

The Auto Update Search function is set to [ON] by default. If you set it to [OFF], the notifications are not displayed.

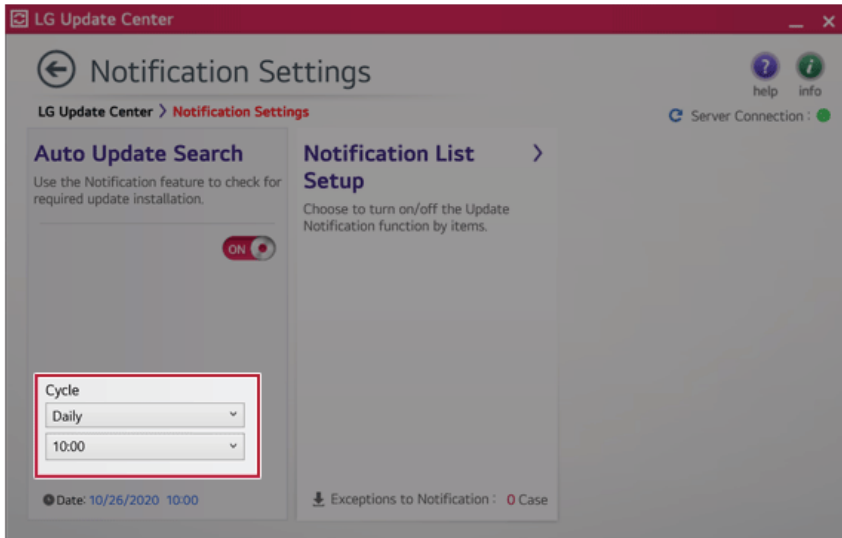
- 1 Select the [Notification Setting] menu.



- 2 Set [Auto Update Search] to [ON] or [OFF].



- 3 Set the [Cycle].



- 4 Select [Notification List Setup] menu to turn on/off the notification for each item.

FAQ

Q: Is there a way that I can install the drivers and applications easily?

- You can select [Required Update] or [All List] menu in **LG Update Center** to automatically install the drivers and applications that you want.

Q: The server connection status is not displayed in the program.

- Check if your PC is properly connected to the wired or wireless LAN.
- Check if Internet connection works properly.

Q: I want to hide the update notifications.

- Select the [Notification Setting] menu and set the [Auto Update Search] to [OFF].
- Select [Notification List Setup] menu to turn on/off the notification for each item.

Q: How can I update the items that are excluded from the notification list?

- You can also install the items that are excluded from the notification list by using the [Required Update] or [All List] menu.

LG Reader Mode

ENGLISH

LG Reader Mode prevents the users from eyestrain and helps them to read the PC screen comfortably by displaying the screen just like a printed paper.

Using LG Reader Mode

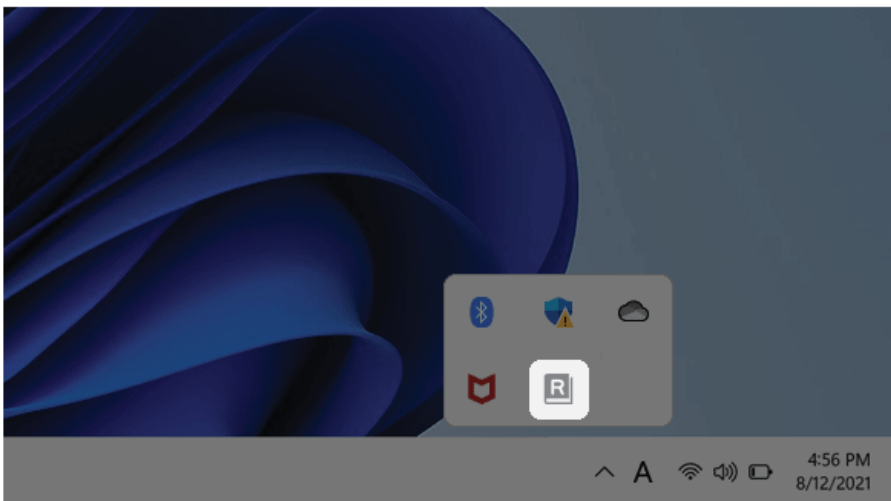


CAUTION

Using the **Reader Mode** and the **Night light** at the same time can cause color distortion. When you use the **Reader Mode**, turn off the **Night light**.

- You can select the Start button [] > [Settings] > [System] > [Display] and turn [Night light] on or off.

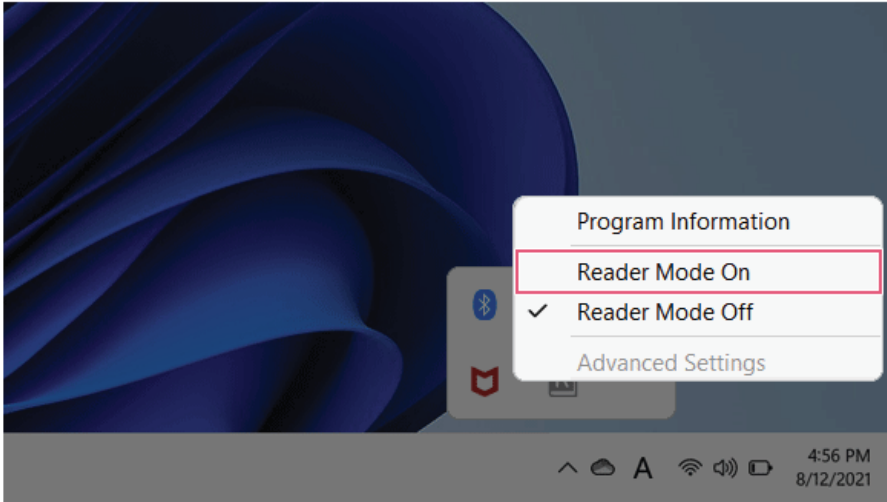
- 1 Press the [] icon on the taskbar.



- 2 If you select the **[Reader Mode On]** menu item, the PC screen switches to **Reader Mode**.

TIP

Select **[Reader Mode Off]** to turn off the **reader mode**.



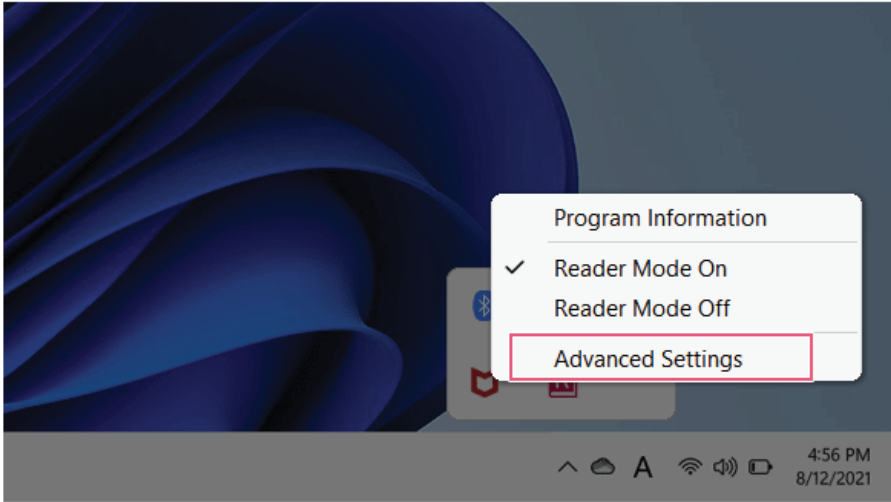
Using **Advanced Settings**

ENGLISH

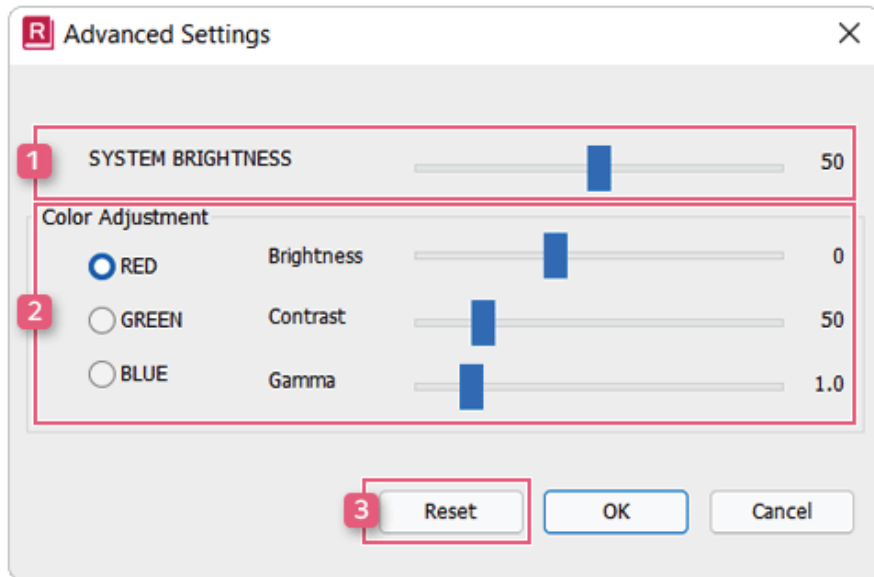
- 1 Click the icon [**R**] on the right of the taskbar and select the [**Advanced Settings**] menu item.

Tip TIP

The [**Advanced Settings**] menu is activated when **Reader Mode** is on.



- 2 The [**Advanced Settings**] windows appears.



- System Brightness:** System brightness can be adjusted.
- Color Adjustment:** Color and its **brightness, contrast and gamma** can be adjusted.
- Reset:** Settings are reset to the default settings.

DTS:X Ultra


ENGLISH

DTS:X Ultra provides rich, sonorous sound when you listen to music, watch videos or play games in the PC.

DTS:X Ultra may not be applied depending on the model.

The figures herein are subject to change without prior notice.

Running DTS:X Ultra

- 1 Select the Start button [] > [All apps] and run [DTS:X Ultra].
- 2 The default is **Internal Speakers** Mode, and it works in **Headphones** Mode when the earphone is connected.

DTS:X Ultra Tour



- 1 **Power:** DTS:X Ultra Turns the power on/off.

- 2 **Automatic:** Provides an environment that is automatically optimized for the running application.
- 3 **Music:** Provides an optimized environment for music playback.
- 4 **Voice:** Provides an optimized environment for voice playback.
- 5 **Movies:** Provides an optimized environment for movie playback.
- 6 **Strategy, RPG and Shooter:** Provides an optimized environment for each game.
- 7 **Custom Audio:** Selects the spatial model and adjusts the expansion power, and it is optimized for each setting.
- 8 **Device:** Allows you to select the connected earphone/headphone. (Provides headphone mode only)
- 9 **Personalized EQ:** Sets an equalizer optimized for your personal hearing. (Provides headphone mode only)
- 10 **Graphic EQ:** Sets the equalizer.

Tip TIP

If you want to remove Audio Driver or DTS:X Ultra , remove [DTS:X Ultra] and [Realtek(R) Audio Driver] in the order specified and restart the system.

If you want to reinstall Audio Driver or DTS:X Ultra, remove [DTS:X Ultra] and [Realtek(R) Audio Driver] in the order specified and install [Realtek(R) Audio Driver]. Then restart and install [DTS:X Ultra].

- If you do not remove or install them in the order specified, an error may occur.

Virtoo by LG

Virtoo by LG is software that allows you to connect your smartphone and PC to check your phone's notifications, make phone calls, send and receive text messages, use media, use mirroring, etc. on your PC.

TIP

If **Virtoo by LG** is not installed, connect to the **Microsoft Store** and search for **Virtoo by LG**. Also, your smartphone must have the **Virtoo by LG** app installed.

You can search for and install the **Virtoo by LG** smartphone app from **Google Play** or **App Store**.

It is recommended to disconnect from the app after using on a public PC.

Virtoo by LG's service may be suspended without prior notice due to the company's circumstances.

The app may not work properly on some smartphone models and upgrading the operating system of a smartphone may prevent some features from working properly.

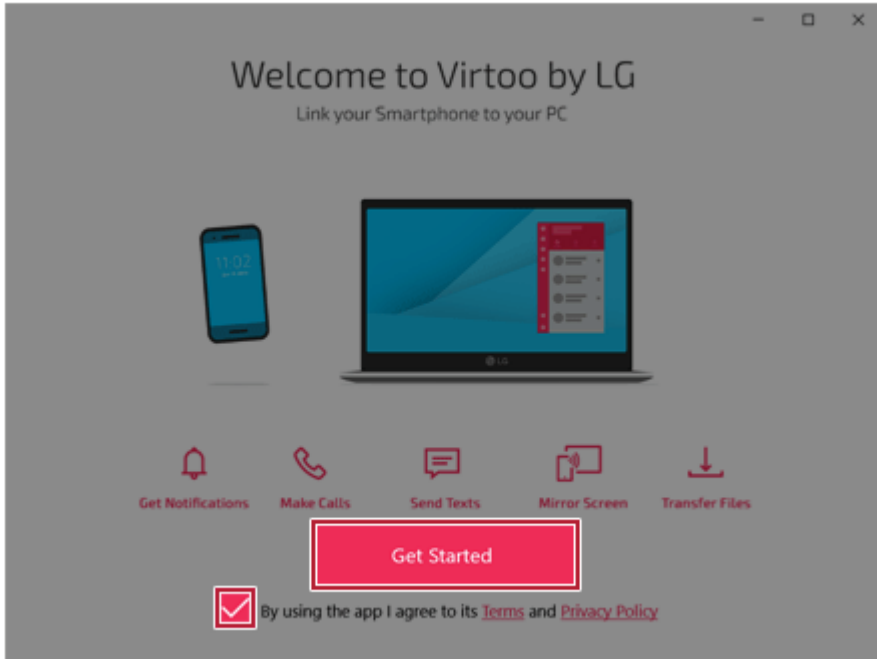
In order to use a dialer with a Microsoft **user's mobile phone**, you need to uninstall **Virtoo by LG** app and driver.

The figures herein are subject to change without prior notice.

Connect to **Virtoo by LG**

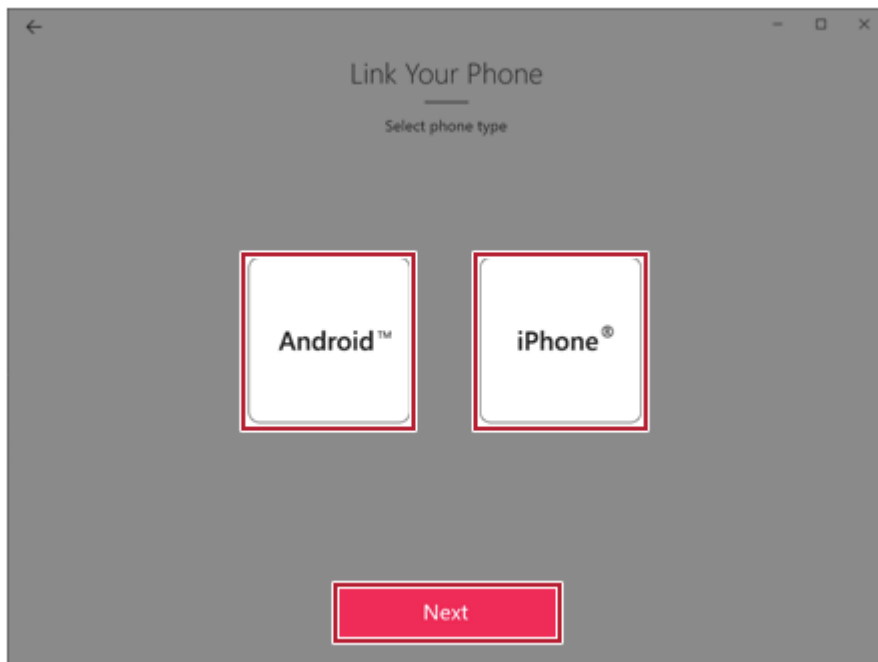
- 1 Select the Start button [] > [All apps] and run [**Virtoo by LG**].

- 2 Once **Virtoo by LG** is executed, agree to the terms and conditions and the privacy policy and click the **[Get Started]** button.

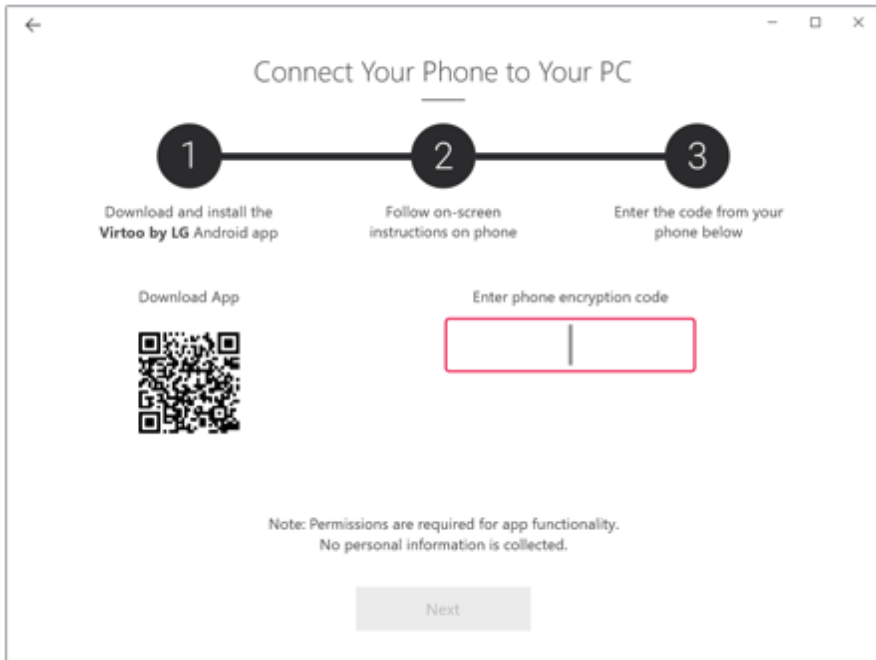


- 3 Select [Android] or [iPhone] and then click the [Next] button.

ENGLISH



- 4 Follow the instructions to connect your smartphone and PC.
 - **Android**

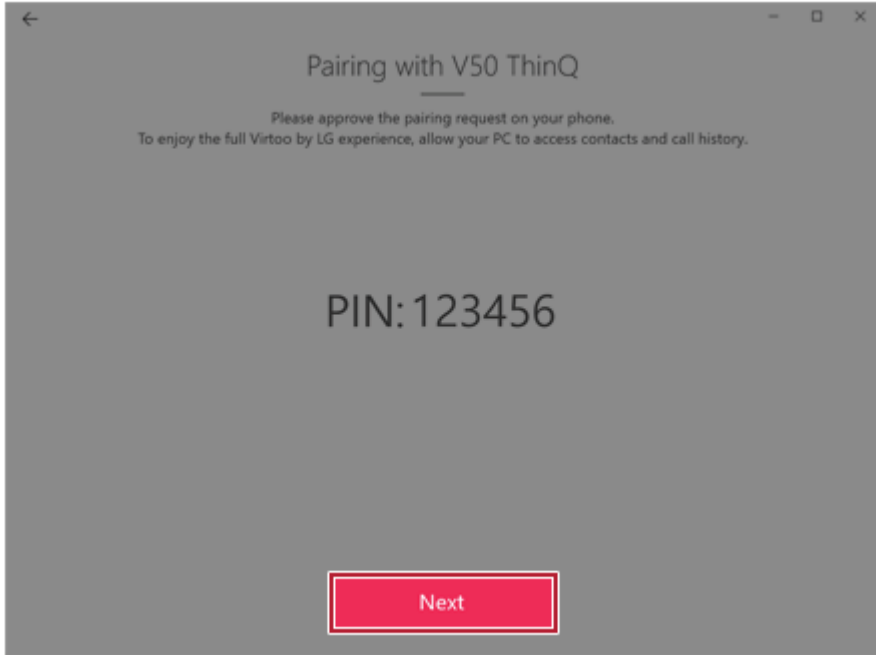


- **iPhone**



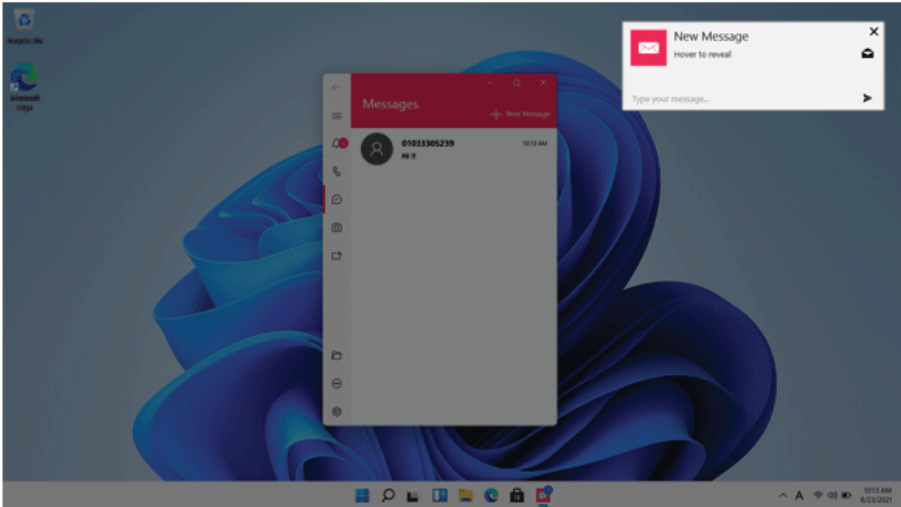
- 5 When an identical PIN Code appears on both PC and smartphone, tap the **[Register]** or **[Pair]** button on the smartphone.

- 6 On the PC, click the **[Next]** button to finish the connection.



Displaying Notification Messages

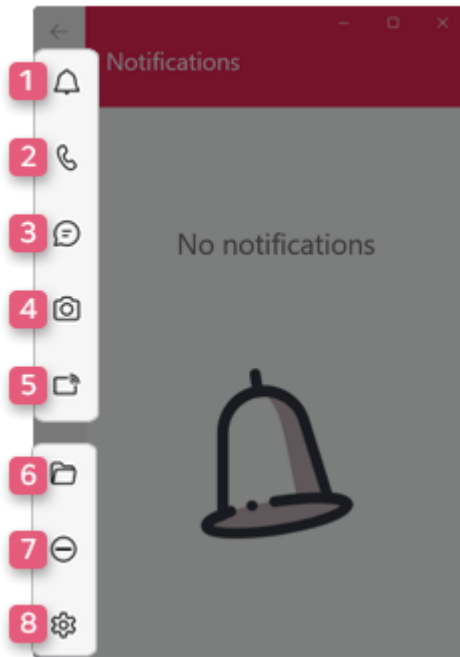
When your smartphone receives a notification, phone call, text message, app notification message, or email, a notification message is displayed on the PC screen.



Tip TIP

If the smartphone notification does not appear on the PC, allow notification access authority of the Virtoo by LG app in the smartphone settings.

- The actual menu structure may differ by smartphone model. Refer to the smartphone manual for more information on menu structure.

Virtoo by LG Tour


- 1 **Notifications:** You can check your phone's notifications on the **Virtoo by LG** app screen.
- 2 **Phone:** Allows you to browse the contacts stored in your smartphone and send text or make a phone call to the contacts.
- 3 **Messages:** Allows you to send and receive text messages in a conversation format.
- 4 **Media:** Displays media files (Photos, Videos, Music, Docs) on your smartphone. You can drag a media file to share it between the smartphone and the PC. (iPhone does not support the sharing of music files and documents.)

- 5 **Mirroring:** Allows you to display the screen of the connected smartphone on your PC and access it from the PC.

Tip TIP

Precautions When Typing a Text

LG smartphone: You can use the PC keyboard to type characters. Press the Korean/English key or [Shift]+[Spacebar] to switch languages, according to smartphone model.

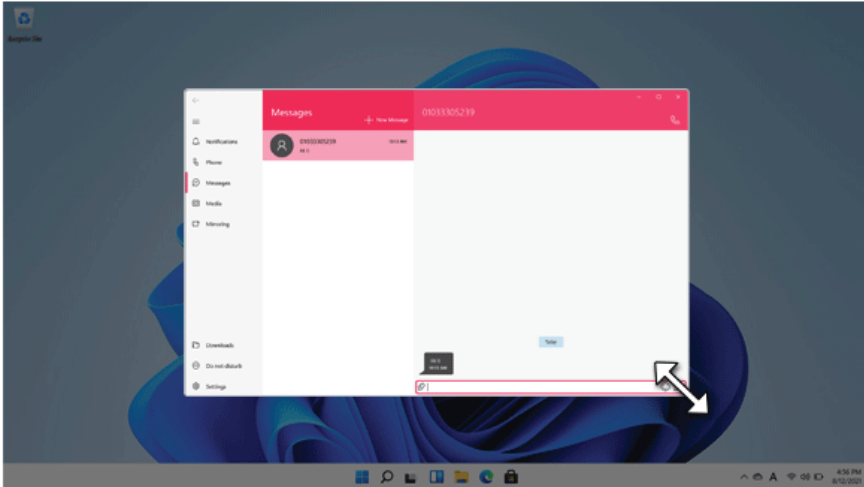
iPhone: You can use the PC keyboard to type characters. Press the [] icon at the top of the screen to switch Korean/English.

Other smartphones: Display an input window at the top of the screen when you enter texts using a PC keyboard. You can type characters using the input console.

- 6 **Downloads:** Opens the download folder of your PC.
- 7 **Do Not Disturb:** Allows you to set smartphone notifications to be or not to be displayed on your PC. By default, the feature is "Off" (Notifications are displayed).
- 8 **Settings:** You can change app settings of **Virtoo by LG**.

Tip TIP

You can adjust the window size of the **Virtoo by LG** app on the PC.



Sharing Media Files (Photos, Videos, Music, Docs)

Tip TIP

Only one file can be transferred at a time and it may take a while if the file is big.

If you want to use the Share Media/File function on your iPhone, you need to connect the iPhone and the PC to the same router.

iPhone does not support the sharing of music files and documents.

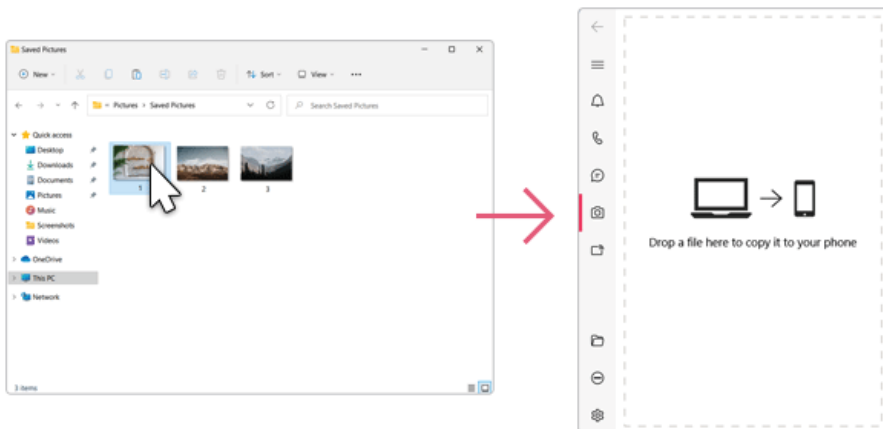
Storing PC Files on Your Smartphone

- 1 Drag and drop the files to share from your PC to the Media screen.

Tip TIP

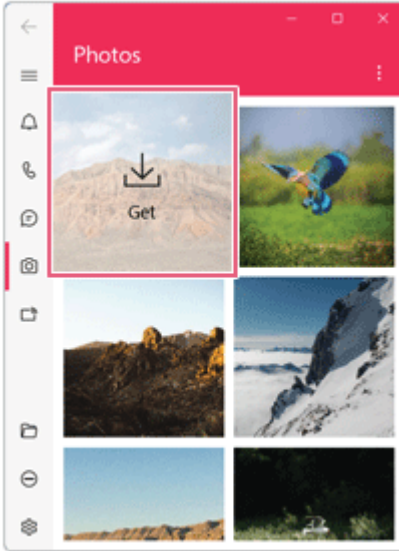
Android: Files sent to the smartphone are classified according to file types and stored in **[Internal Storage] > [Virtoo by LG] > Images / Videos / Audio / Other** folder.

iPhone: Files sent to the smartphones are saved in the Album.

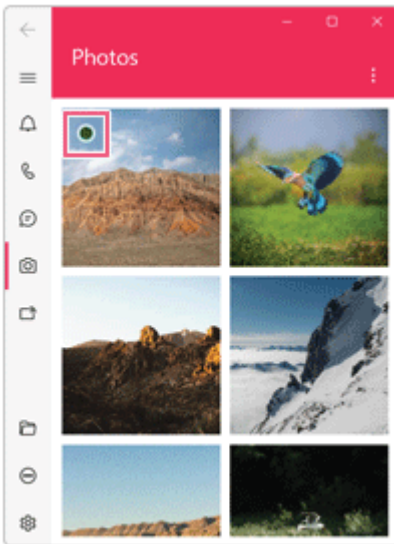


Storing Smartphone Files on Your PC

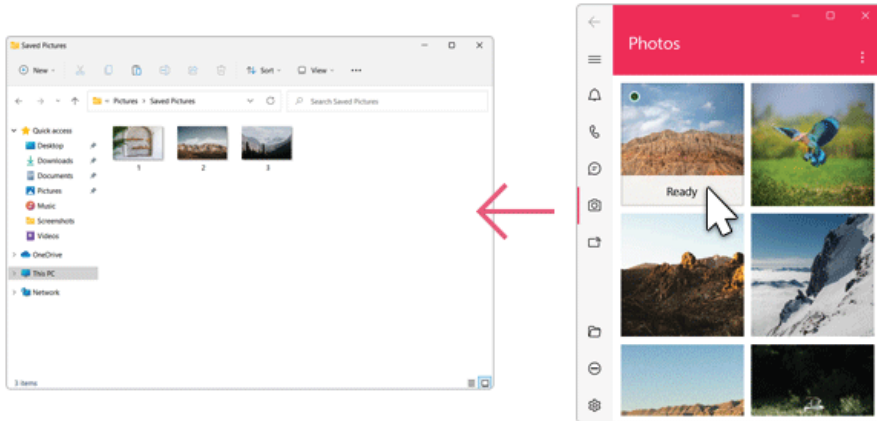
- 1 Select file to share from the Media screen.



- 2 Once the files are ready to be sent, a green circle [●] appears above the selected files.



- 3 You can check the files that are ready to be sent, or drag and save them to a desired location on the PC.



File Sharing with Mirroring

The mirroring must be enabled to use the file sharing feature.

Tip TIP

Only Android smartphones support the file sharing feature through mirroring.

Only one file can be transferred at a time and it may take a while if the file is big.

Depending on the wireless environment, the mirroring screen may suffer a buffering problem or the file transmission speed may be lowered.

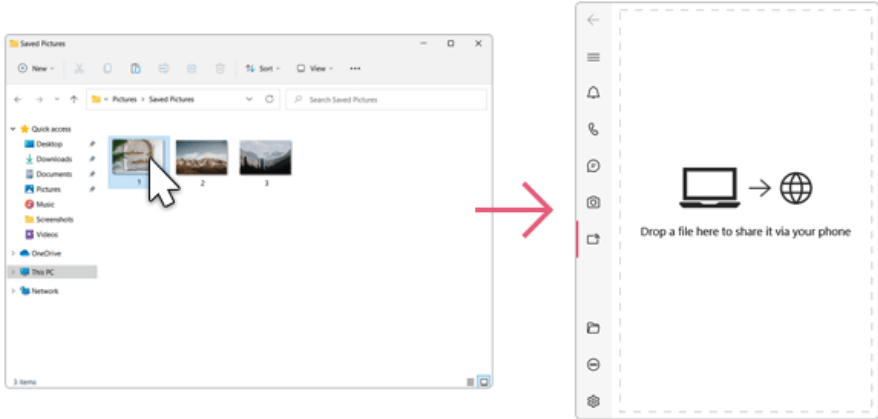
The keyboard and mouse on the PC acts on the smartphone as if Bluetooth keyboard and mouse are connected to it.

Files sent to the smartphone are classified according to file types and stored in **[Internal Storage]** > **[Virtoo by LG]** > **Images / Videos / Audio / Other** folder.

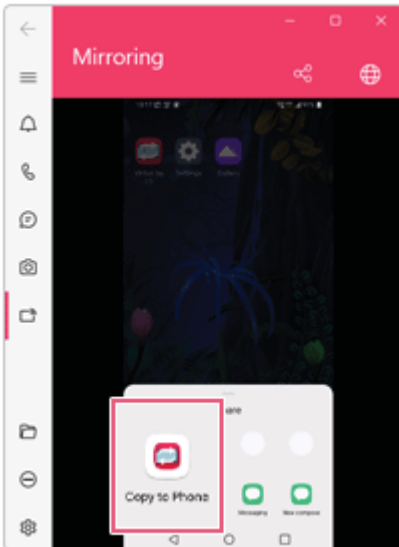
Files sent from your smartphone are stored in the [Download] folder of your PC.

Storing PC Files on Your Smartphone

- 1 Drag the files to share to the mirroring screen from your PC.

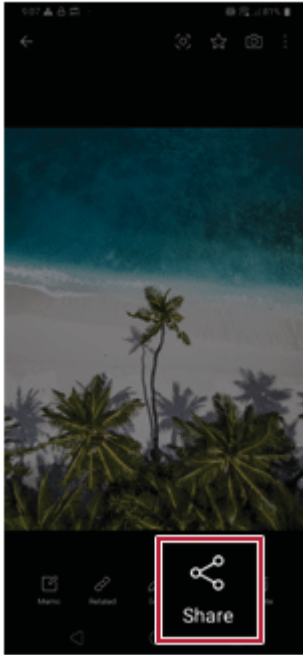


- 2 Click the [Copy to Phone] button to store the file(s) on your smartphone or click another app icon to share the file(s) on the app.



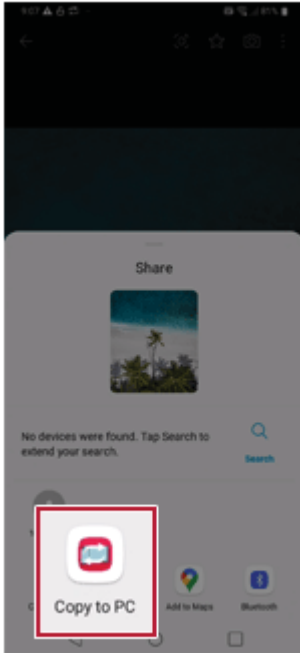
Storing Smartphone Files on Your PC

- 1 Select file(s) on your smartphone using a file browser and then tap the [Share] menu item.



- 2 Tap the [Copy to PC] button to transfer them to your PC.

ENGLISH



Virtoo by LG Update

Some functions may not work properly if the version of an app installed on your PC or mobile device (Android or iPhone) is out of date. You can update your PC and mobile device as below:

Please initialize your app after it is updated.

- PC app: In **Microsoft Store**, search for and update the **Virtoo by LG** app.
- Smartphone app: In **Google Play** or **App Store**, search for and update the **Virtoo by LG** app.

LG Power Manager


LG Power Manager allows you to configure the power settings according to the usage environment to manage the battery efficiently.

TIP

LG Power Manager is provided with the UWP app and it can be downloaded again on the **Microsoft Store** if it is deleted. If you want to download the files again, connect to the **Microsoft Store**, search for **LG Power Manager** and install them.

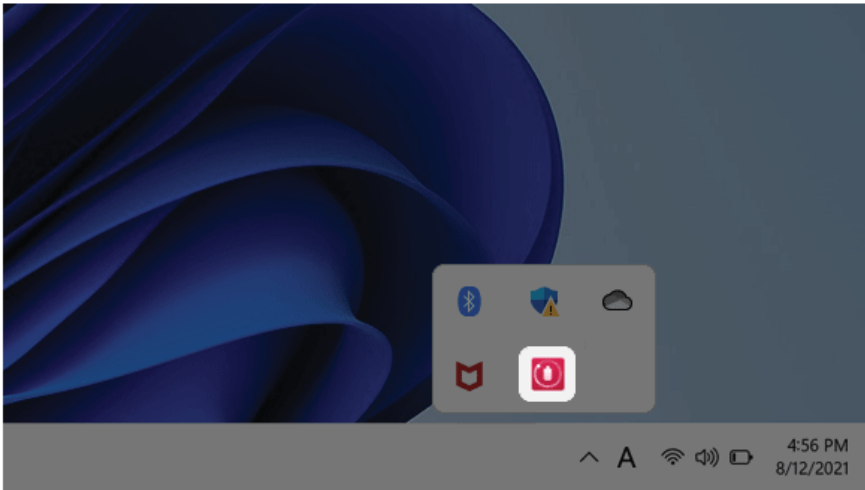
The figures herein are subject to change without prior notice.

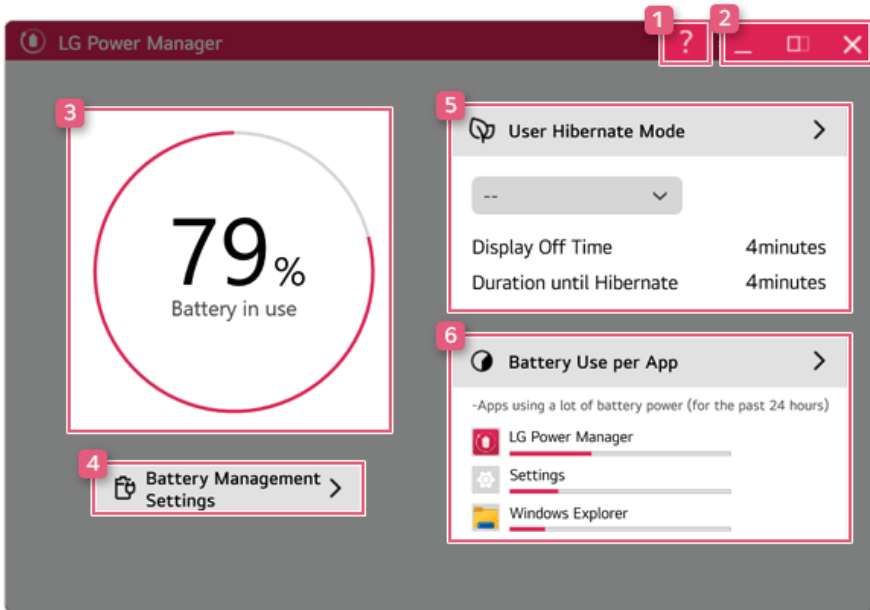
Using LG Power Manager

Select the Start button [] > [All apps] and run [LG Power Manager].

TIP

Double-click the [] icon on the right side of the taskbar to start the [LG Power Manager].




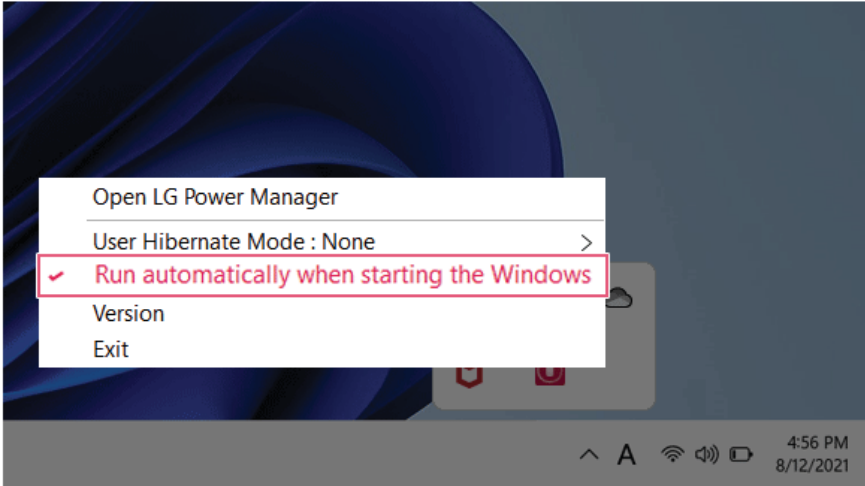


- 1 **Help button:** Displays the Help menu.
- 2 **Minimize/Maximize/Exit button:** Allows you to minimize or maximize the window or exit the program.
- 3 **Battery Status:** Displays the battery level and battery usage status including power connection.
- 4 **Battery Management Settings:** Allows you to set a window theme to Dark Mode or set the notification function for battery status.
- 5 **User Hibernate Mode:** Allows you to create a user mode and configure the detailed settings such as Display Off Time and Duration until Hibernate.
- 6 **Battery Use per App:** Allows you to check the battery use of a running app. The actual content may differ depending on the Windows OS version and usage environment. For more detailed information, click the menu.

TIP

LG Power Manager is set to run automatically when running Windows.

You can change the Autorun settings by right-clicking the [] icon on the right side of the taskbar and selecting the [Run automatically when starting the Windows] menu.



Set custom Hot Keys

ENGLISH

Set Custom Hot Keys helps users quickly access the desired app or website.

TIP


Set Custom Hot Keys is available only if **LG On Screen Display 3** is installed.

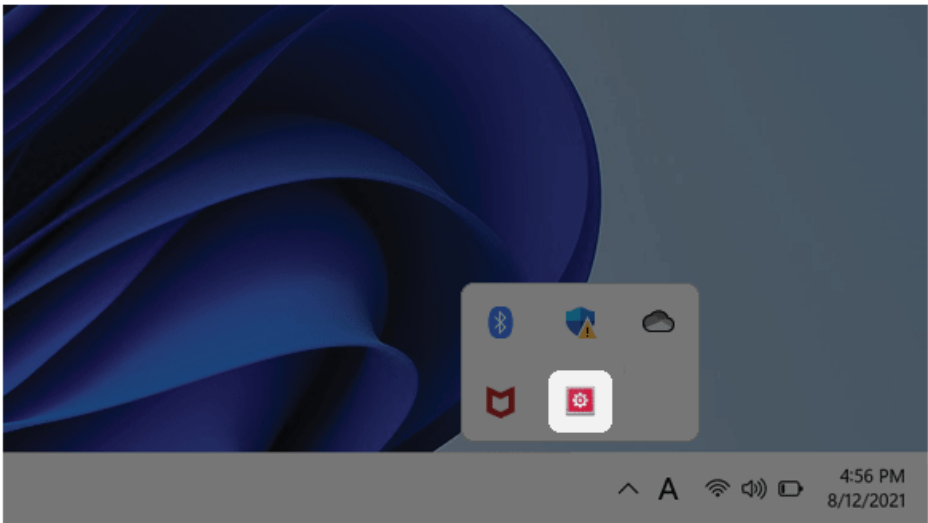
LG On Screen Display 3 may be installed through **LG Update Center**.

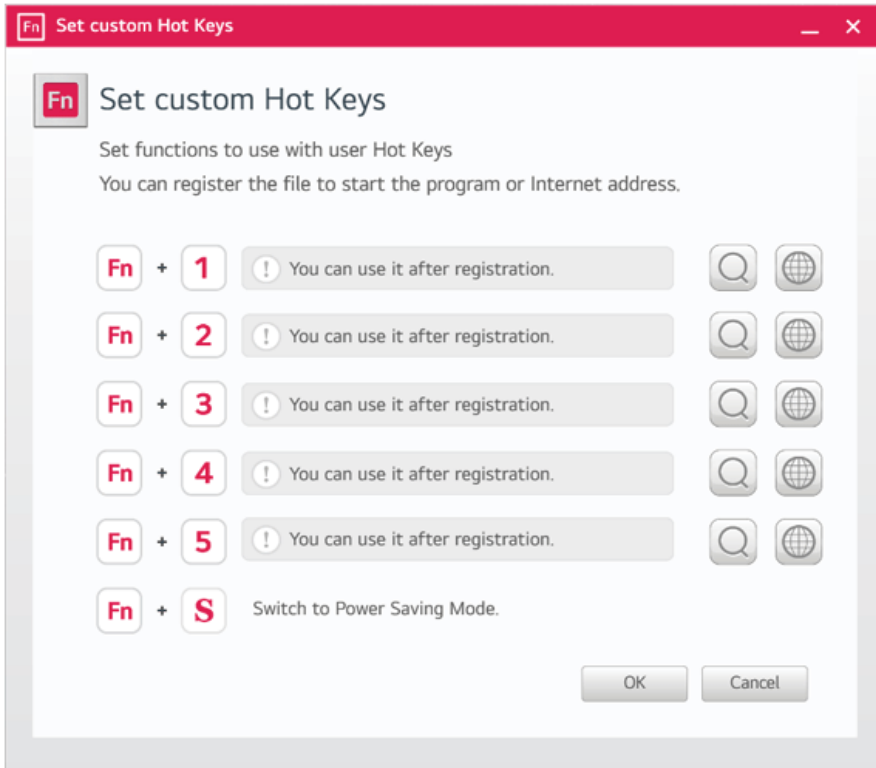
Some abnormal program files (.exe) and Internet addresses (links) may not be linked.

The figures herein are subject to change without prior notice.

Running **Set Custom Hot Keys**

Double-click the [] icon in the right corner of the taskbar to run [Set Custom Hot Keys].





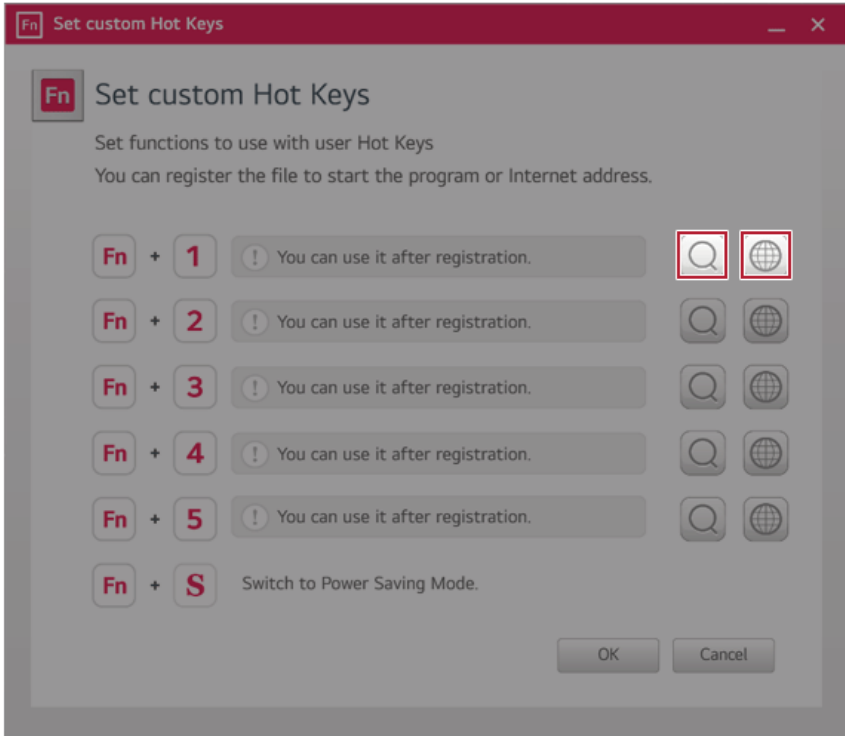


Setting Hot Keys

Tip TIP

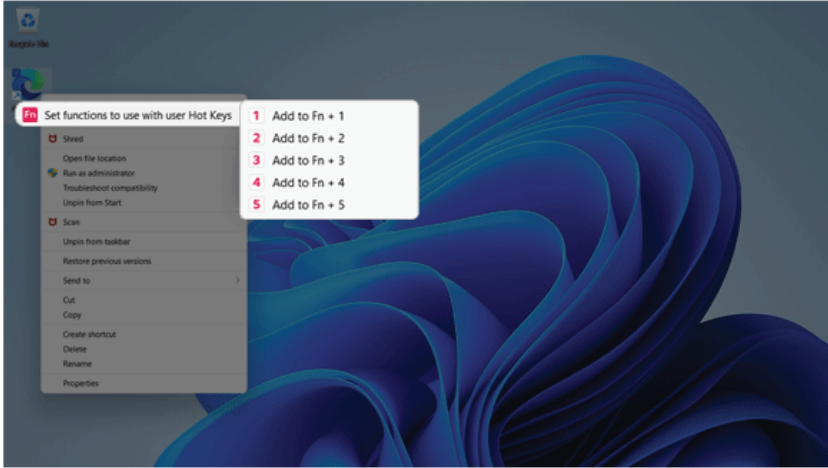
Hot keys can be set from 1 to 5, and the [Fn] + [S] Sleep Mode cannot be changed.

- 1 On the Hot Keys Settings List, tap the navigation icon [] or Internet icon [] to register the desired app or Internet address.



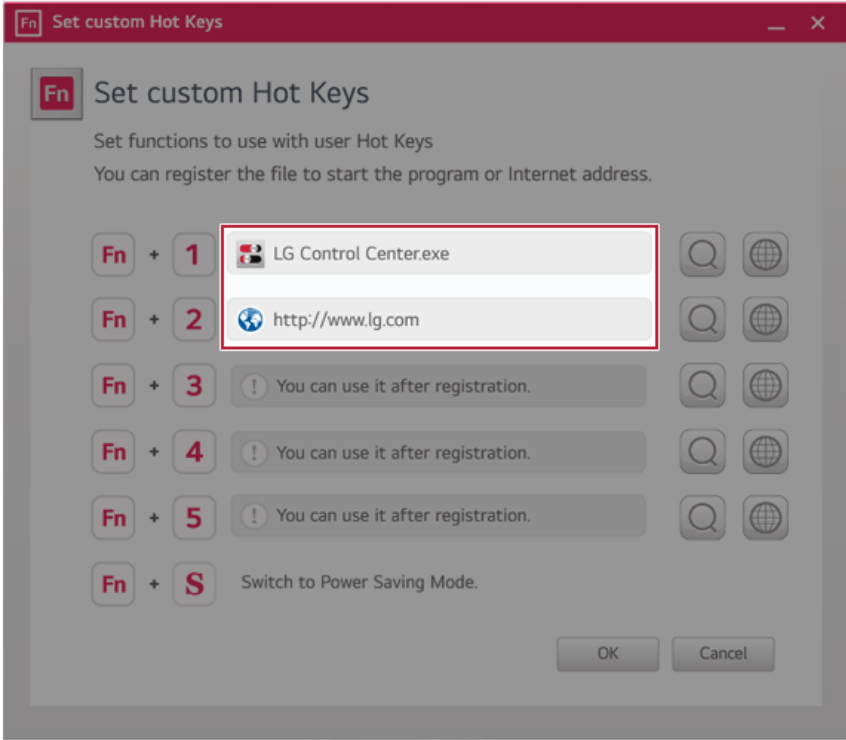
Tip TIP

After selecting the app-running file, right-click the mouse and use the [Show more options] > [Set functions to use with user Hot Keys] menu to register the app quickly.

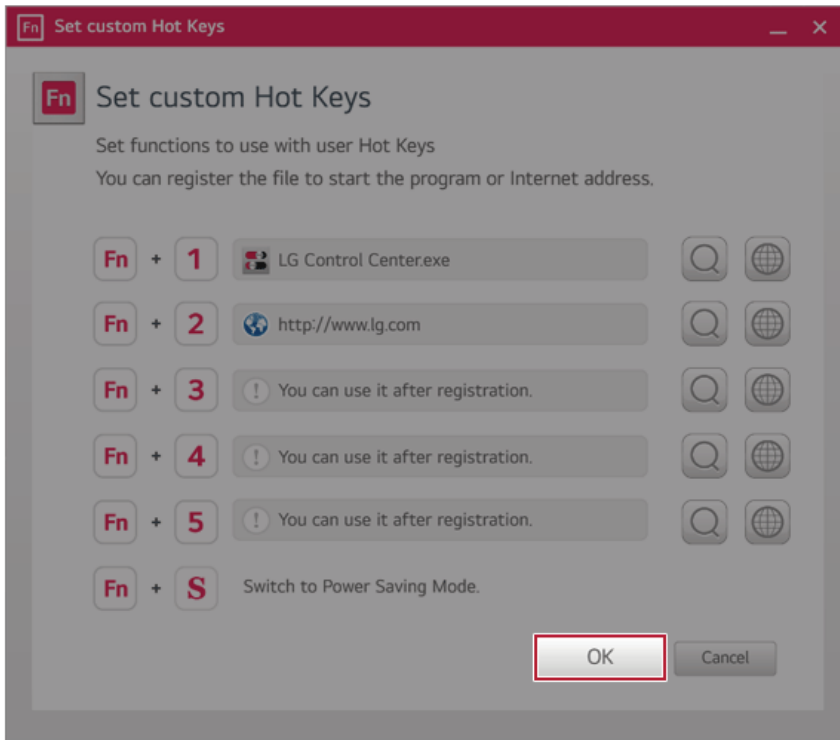


- 2 When registration is complete, it is displayed on the settings list.

ENGLISH



- 3 Press [OK] to complete the setup.



Killer™ Control Center

ENGLISH

Killer™ Control Center optimizes the PC network environment so that you can maintain the best network condition.

Tip TIP

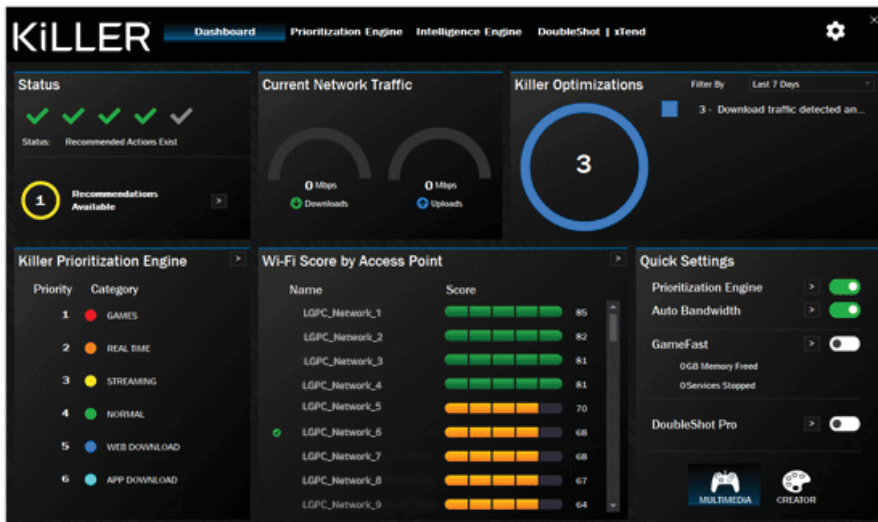
For more information about Killer™ Control Center, visit Intel's official website (<https://intel.com>).

Run Killer™ Control Center

Select the Start button [] > [All Apps] and run [Killer™ Control Center].

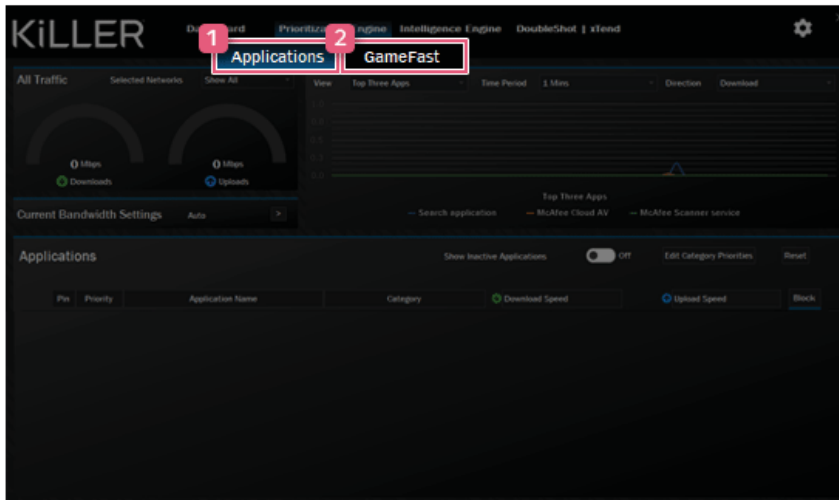
Dashboard

It shows the network status and network usage priority, and you can change the settings through Quick Settings.



Prioritization Engine

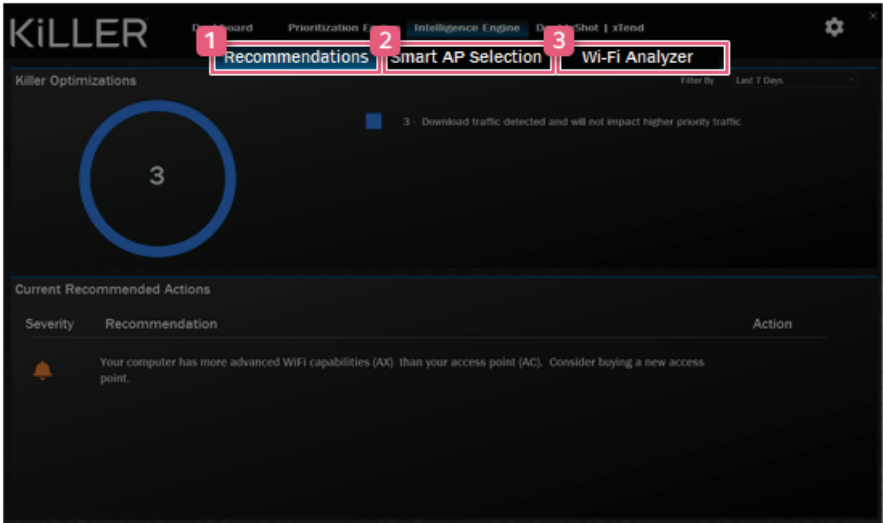
It allows you to set network settings and enable or disable the GameFast feature.



- 1 **Applications:** It allows you to set the network usage priority of applications and whether to block or not.
- 2 **GameFast:** It allows you to turn the game optimization feature on or off.

Intelligent Engine

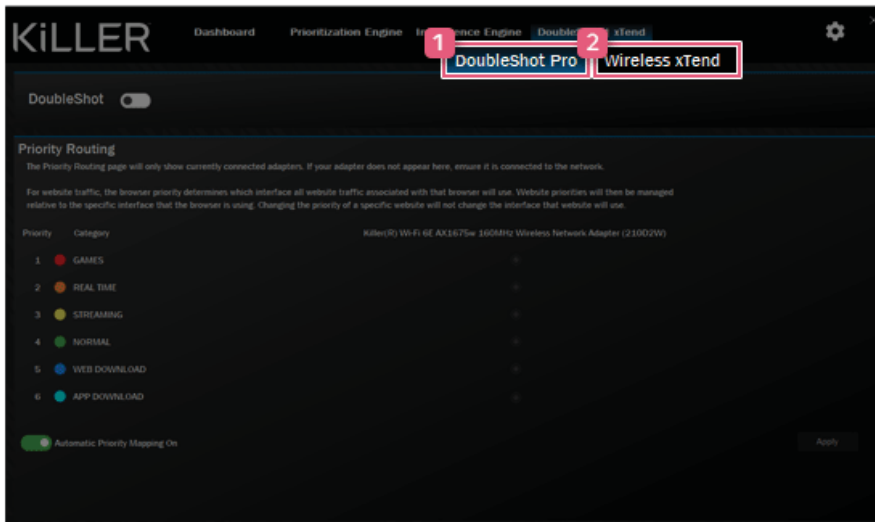
It provides network optimization results, recommendations, and wireless LAN setup functions.



- 1 **Recommendations:** It displays network optimization results and recommendations.
- 2 **Smart AP Selection:** It allows you to set up the smart access point selection feature.
- 3 **Wi-Fi Analyzer:** It compares and displays the signal strength of nearby wireless networks.

DoubleShot / xTend

It allows you to configure DoubleShot and xTend functions.



- 1 **DoubleShot Pro:** It allows you to set up the Doubleshot function and automatic priority mapping.
- 2 **Wireless xTend:** It allows you to create and use a hotspot network.

Restoring the System

Restoring the System

If the system has an error, you can use Windows' recovery function to recover or restore the system to its initial pre-purchase state.


 **CAUTION**

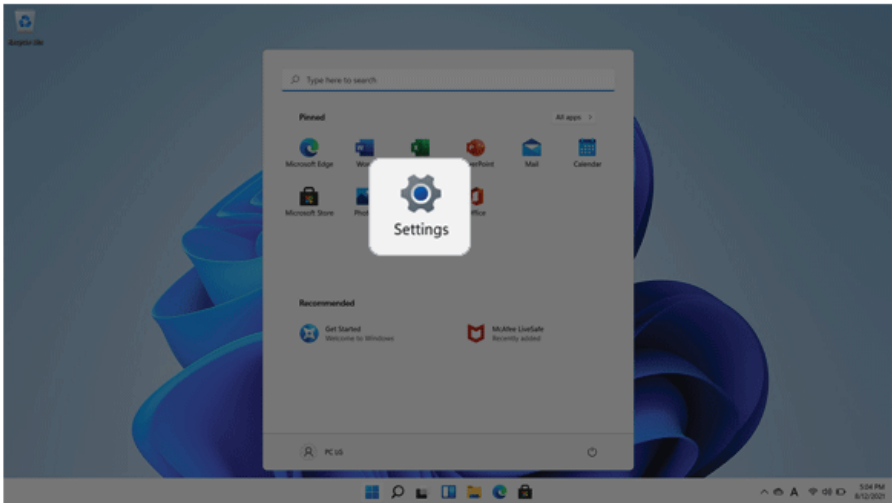
If you have deleted the restoration data in the protected area of the disk, or have arbitrarily installed another operating system, the restore function may not work.

To recover the system, the AC adapter must be connected.

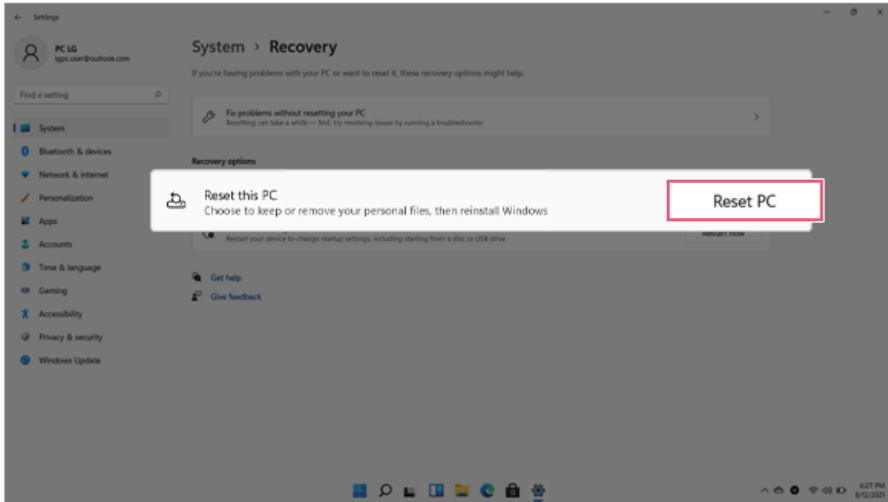
- 1 Select the Start button [] > [Settings].

 **TIP**

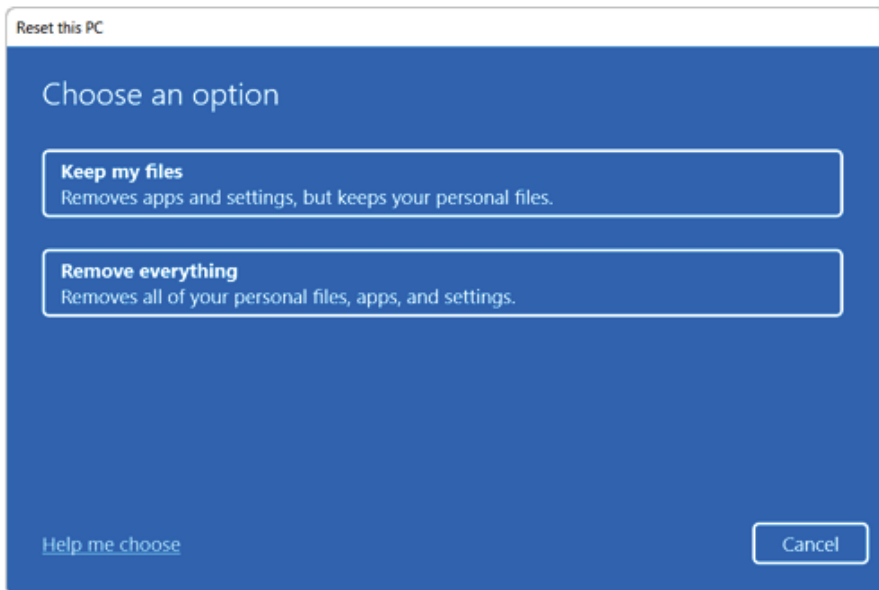
Press the [] key or [Ctrl] + [Esc] on the keyboard to display the Start screen.



- 2 Select [Reset PC] in [System] > [Recovery] > [Reset this PC].



- 3 Select the options you want to proceed with the recovery.

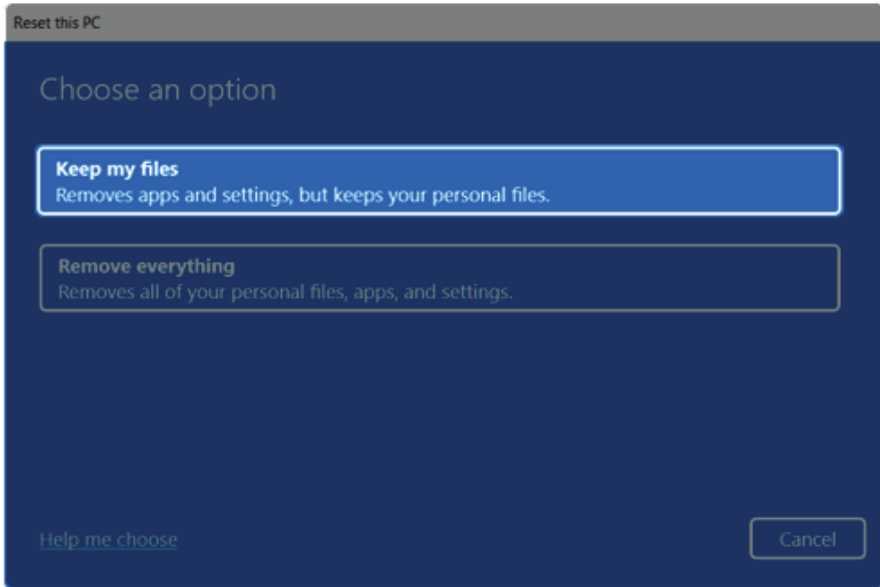


Keep My Files

It removes the apps and their settings without loss of personal files.

- 1 Select [Keep my files].

ENGLISH



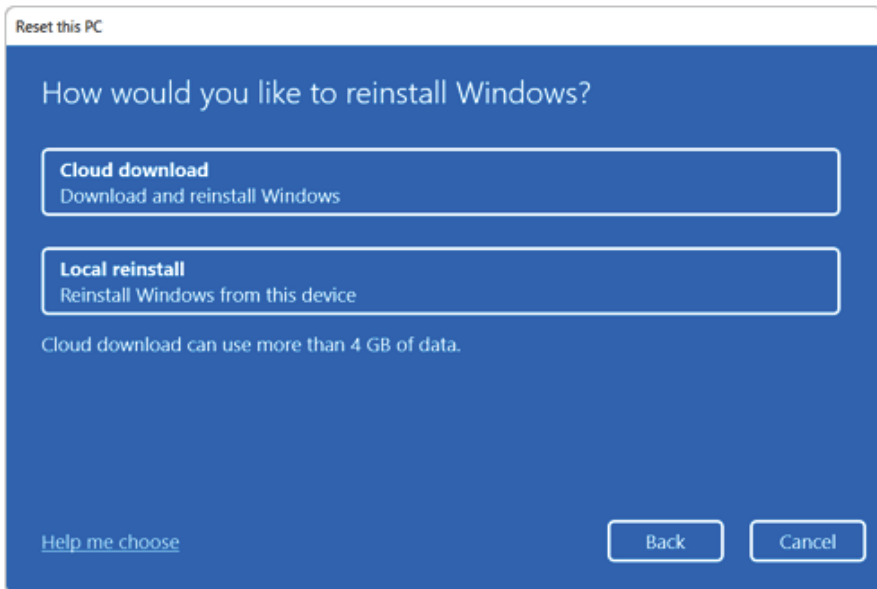
2 Select How to Reinstall Windows.

Tip TIP

If the PC is not connected to the Internet, the screen for selecting Windows installation method does not appear.

[Cloud download] is a menu for downloading **Windows** from **Microsoft** Cloud Server and reinstalling it.

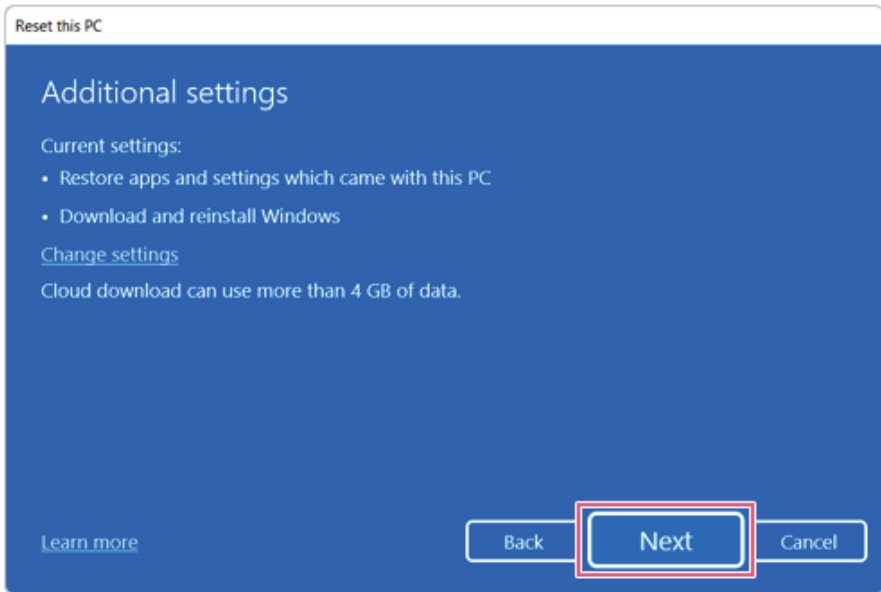
The required time may vary depending on the Internet speed.



3 Check the current settings and click [Next] to perform the recovery according to the instructions.

TIP

If you need to change the settings, click [Change settings] and change the settings.



Remove everything

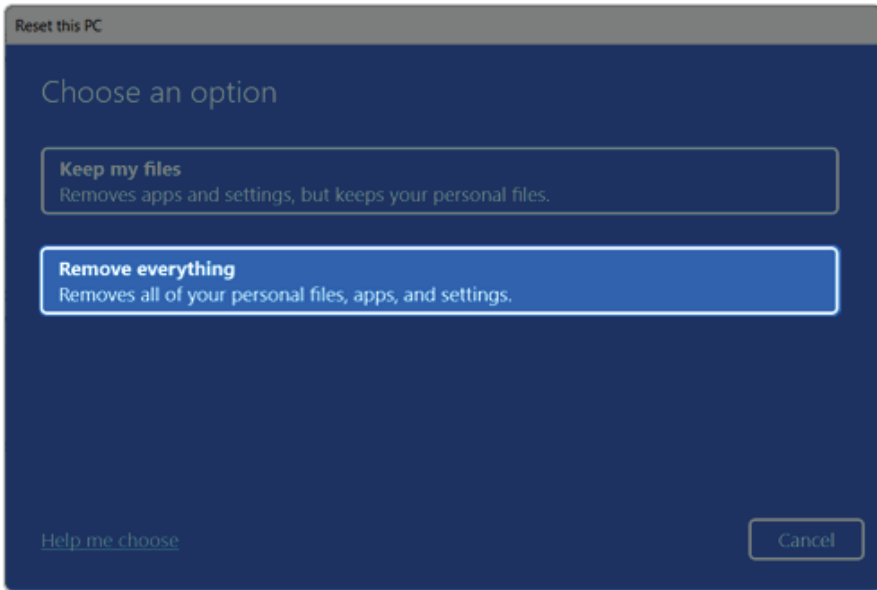
Removes all items from the system and restores the system to its initial pre-purchase state.



CAUTION

All data is lost during the initialization, so you must backup all critical data in advance. It may take about 5 hours or longer depending on the system conditions.

- 1 Select [Remove everything].



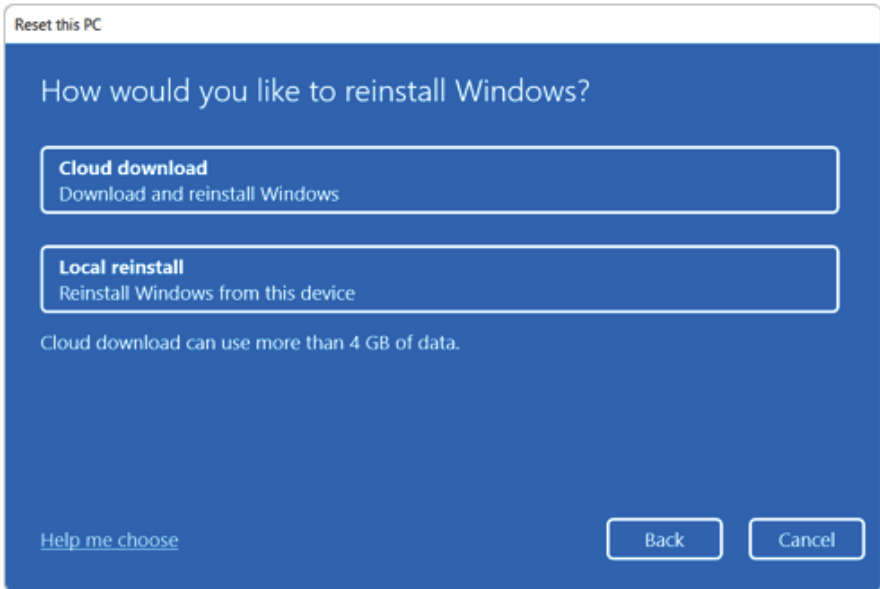
2 Select How to Reinstall Windows.

Tip TIP

If the PC is not connected to the Internet, the screen for selecting Windows installation method does not appear.

[Cloud download] is a menu for downloading **Windows** from **Microsoft** Cloud Server and reinstalling it.

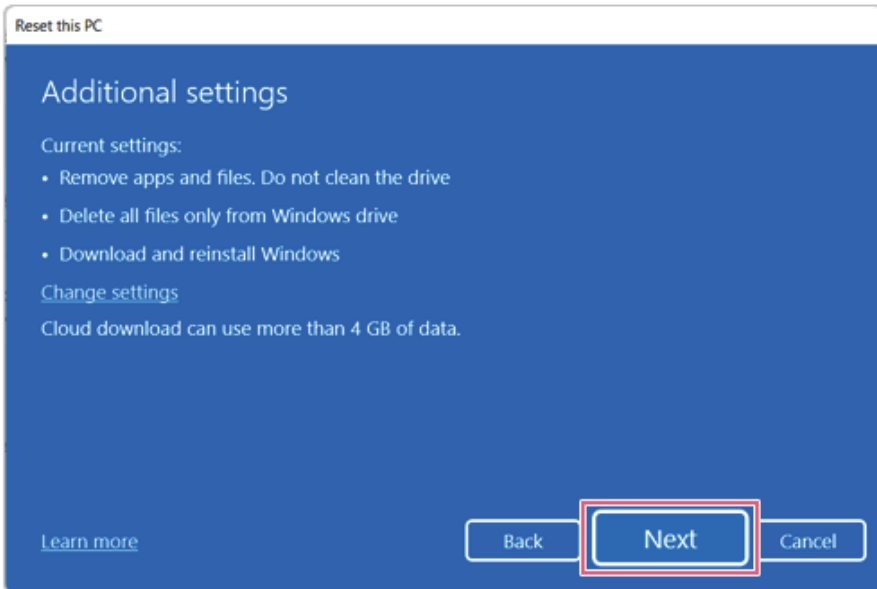
The required time may vary depending on the Internet speed.



- 3 Check the current settings and click [Next] to perform the recovery according to the instructions.

Tip TIP

If you need to change the settings, click [Change settings] and change the settings.



LG Recovery Center RE

If booting is impossible due to an error with the system, you can recover the system using **LG Recovery Center RE**.

Tip TIP

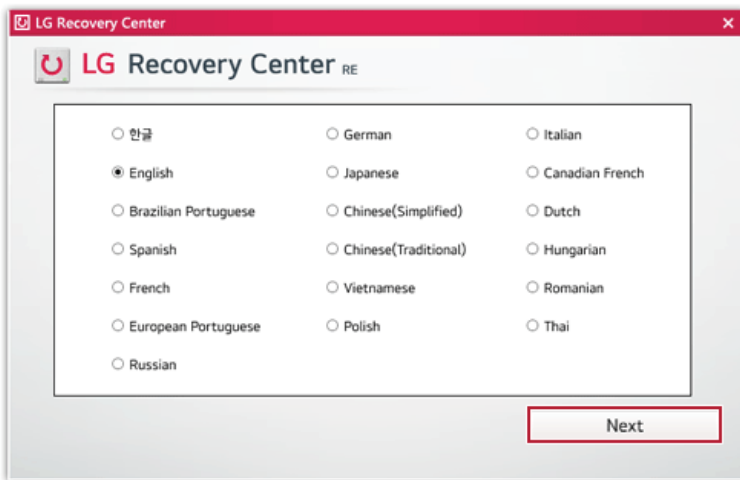
It is recommended that you create a recovery drive in case a serious error occurs in the system.

CAUTION

If you have deleted the restoration data in the protected area of the hard disk, the restore function may not work.

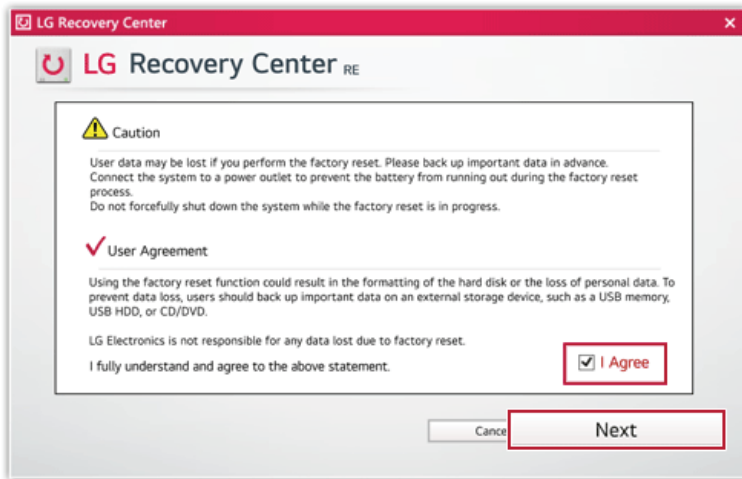
All data is lost during the initialization, so you must backup all critical data in advance.

- 1 Turn on the PC and press [F11].
- 2 Once **LG Recovery Center RE** is started, select a language and press the [Next] button.



- 3 When the cautions and user agreement screen appears, check the [I Agree] button and press the [Next] button.

For recovery, the power adapter must be connected. Connect the system power and then recover the system.



- 4 When factory reset is complete, press the [Complete] button to restart the system.

Recovery Drive

ENGLISH

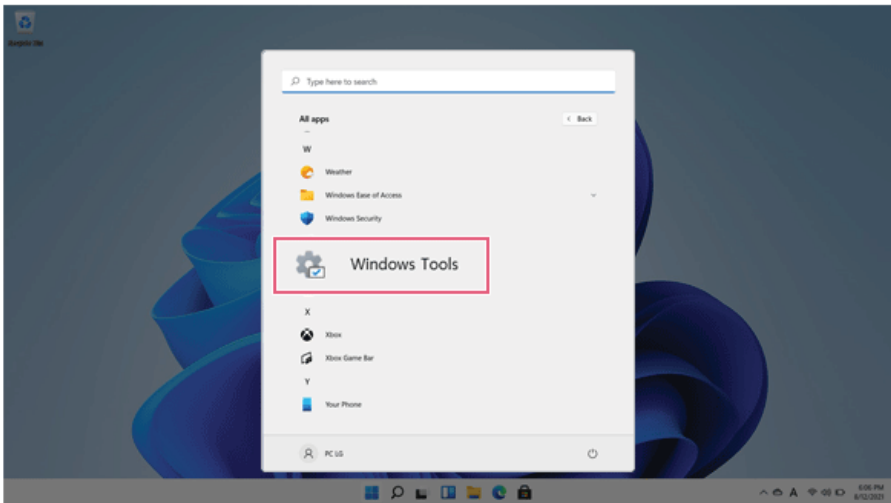
Creating Recovery Drive

Create a recovery drive in case **LG Recovery Center RE** is unable to recover the system.

Tip **TIP**

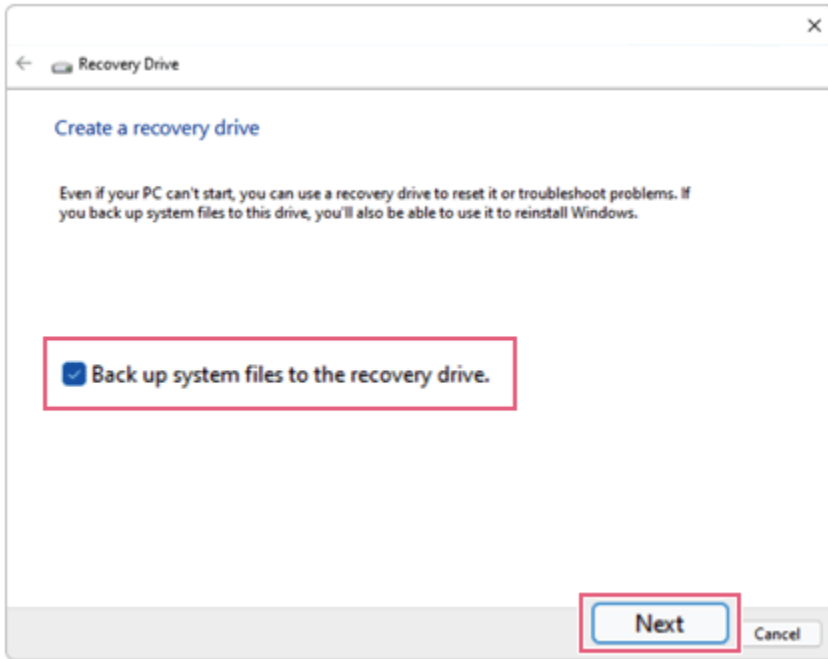
This process may delete all data on the storage device designated as the recovery drive. Make sure to back up all important data in advance.

- 1 Select the Start button [] > [All apps] > [Window Tools].



- 2 Select [Control Panel] > [Recovery] > [Create a recovery drive].

- 3 Check [Back up system files to the recovery drive.] and select [Next].



- 4 Select the USB flash drive to use and press [Next] to create a recovery drive.
- 5 Once the recovery drive is ready, press [Finish] to complete the creation of the recovery drive.

Using Recovery Drive

In case **LG Recovery Center RE** is unable to recover the system, you can use the recovery drive to recover the system.



CAUTION

All data may be lost depending on the user settings during the system recovery.

- 1 Connect the recovery drive to the USB port of the PC.
- 2 Turn on the PC and press [F10] several times.
- 3 When the screen for selecting the boot device appears, select the connected recovery drive and press [Enter].
- 4 Set the language and select the [Troubleshooting] menu.


- 5 Select the item you want and recover the system by following the instructions.

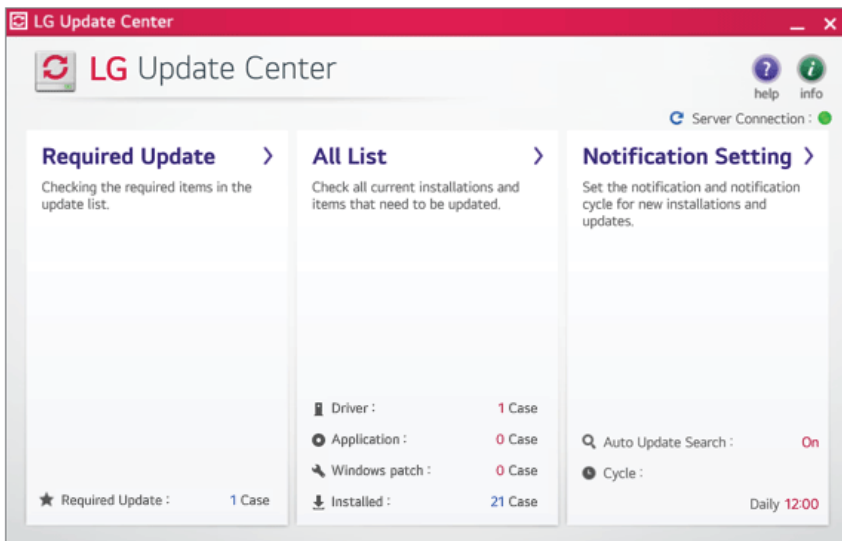
Setup and Upgrade

Installing the Driver

The figures herein may differ by language selection and are subject to change without prior notice.

Using **LG Update Center** to install the Driver

- 1 Select the Start button [] > [All apps] > [LG Software] and run [LG Update Center].



- 2 Select [Required Update] or [All List] to install the driver.

Tip TIP

You can use the **LG Update Center** to quickly install the latest drivers, or reinstall any deleted drivers.

Use **LG Update Center** to keep your system current and optimized.

How to Download **LG Update Center**

You can install **LG Update Center** by downloading it from the LG Electronics Service Website (www.lg.com).

ENGLISH

Starting System Setup

System setup means storing the hardware configuration information of the PC in the flash memory. Through system setup, the PC retrieves various information including current date and time, memory capacity, and hard disk capacity and type.

You setup the system when you set passwords, change the boot order, and add new peripheral devices to the machine.

Items displayed on the Setup screen may differ by model type and specification.

- Refer to .
- Refer to .
- Refer to .

 **TIP**

To use the system setup (F2), booting device selection (F10), or recovery (F11), you need to restart the system (click [Restart] in the system power menu) and then immediately press the corresponding function key due to the fast booting speed.



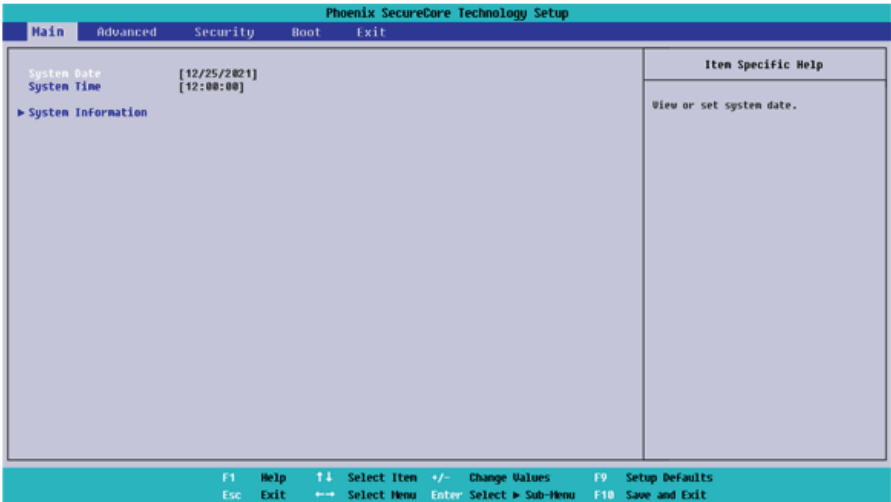
CAUTION

- Do not change the system setup unless necessary. Incorrect system setup may cause errors during system operation. Use caution when changing the system setup.
- For performance improvement, the system setup menu configuration and the initial setup status may be changed and may become different from images included in the user manual.

- 1 Reboot the system and press [F2].



- 2 In a few moments, the system setup screen appears.



Keys Used in System Setup

Keys	Function
Enter	Selects the current item.
Esc	To deselect the current item or to move to the previous screen.
▲, ▼, ◀, ▶ (Arrow keys)	Moves the cursor up, down, left, and right.
+, -	Increases or decreases the item value.
F10	Saves the new settings or exits the system setup.

Setting the Password

ENGLISH

This process is to set a password so that other people cannot use the PC or change the settings. The user can set a password while booting the system or setting up the system.

The model in the example can differ from actual models and is subject to change for performance improvements, without prior notice.



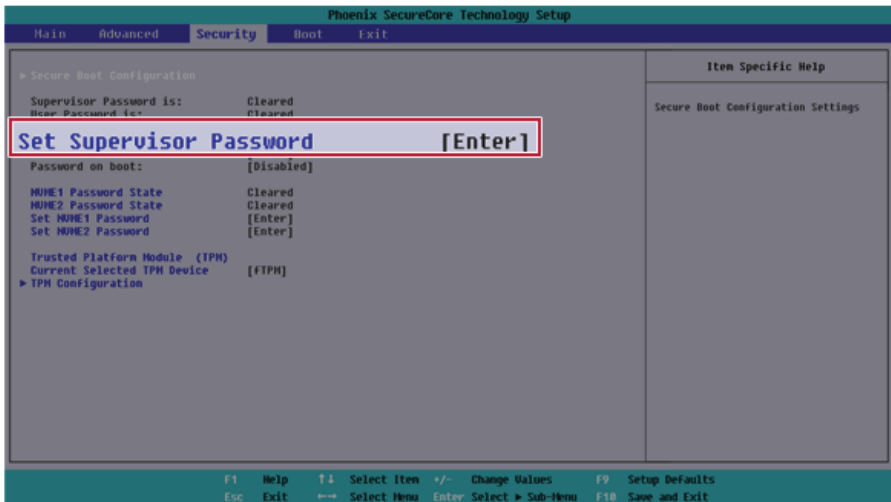
CAUTION

- Without the registered password, access to the system will be denied. Write down and keep the password in a safe place.

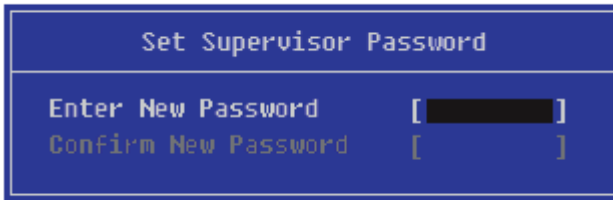
Set Supervisor Password

The password prevents unauthorized people from accessing the PC. By default, no password is set for the machine. If an unauthorized person changes the password in the System Setup, you will be unable to access the system.

- After opening the system setup screen, use the arrow keys to move to **[Security]**.
- When the **Security** item appears, select **[Set Supervisor Password]** using the arrow keys, and then press the **[Enter]** key.

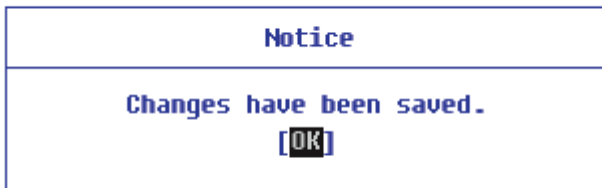


- When the **Set Supervisor Password** setting screen appears, enter the password and press the [Enter] key. The password should not exceed 12 characters and should consist of English letters (A - Z), numbers (0 - 9), and special characters or a combination of them.



Set Supervisor Password	
Enter New Password	[██████████]
Confirm New Password	[]

- When the **Notice** screen appears, press the [Enter] key.



Notice
Changes have been saved. [OK]

- To save the changes in the system setup, press [F10].
- When the **Setup Confirmation** screen appears, check **[Yes]** and press the [Enter] key. The PC will restart.



Setup Confirmation
Save configuration changes and exit now? [Yes] [No]

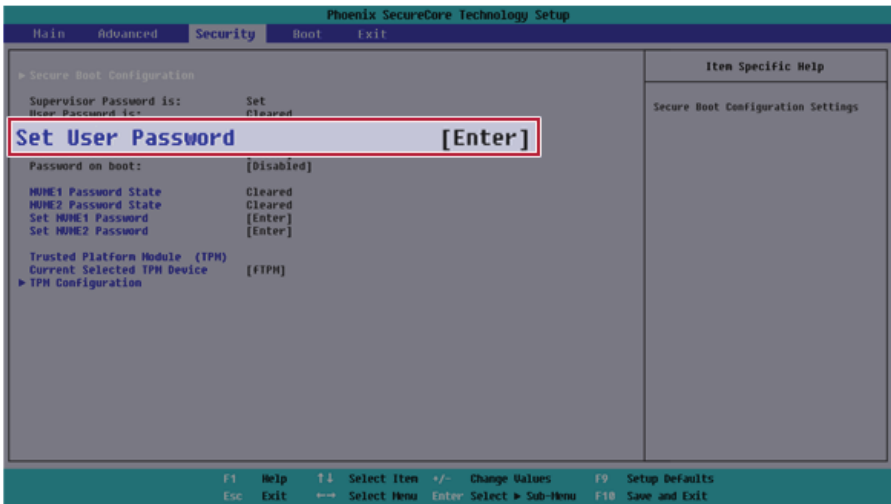
Tip TIP

- With **Supervisor Password**, you are authorized to set all items in the System Setup and to set **Password on boot**. In case other people also use the PC, it is recommended to set the **Set User Password**.


Set User Password

The password set by the **Set User Password** process is lower in level than that set by the **[Set Supervisor Password]** process, and so the user can use the **[Set User Password]** only after setting a password in the **[Set Supervisor Password]** menu.

- 1 After opening the system setup screen, use the arrow keys to move to **[Security]**.
- 2 When the **Security** item appears, press the **[Enter]** button in the **[Set User Password]** menu.

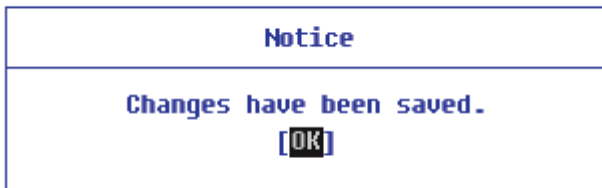


- When the **Set User Password** setting screen appears, enter the password and press the [Enter] key. The password should not exceed 12 characters and should consist of English letters (A - Z), numbers (0 - 9), and special characters or a combination of them.



Set User Password	
Enter New Password	[██████████]
Confirm New Password	[]

- When the **Notice** screen appears, press the [Enter] key.



Notice
Changes have been saved. [OK]

- To save the changes in the system setup, press [F10].
- When the **Setup Confirmation** screen appears, check [Yes] and press the [Enter] key. The PC will restart.



Setup Confirmation
Save configuration changes and exit now? [Yes] [No]

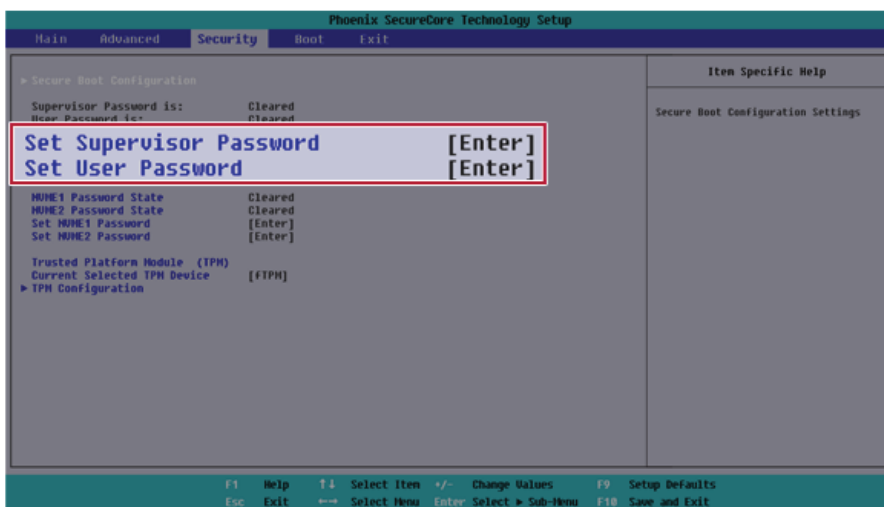
Tip TIP

- **[User Password]** allows limited access to the items in the System Setup compared to the **[Supervisor Password]** item.

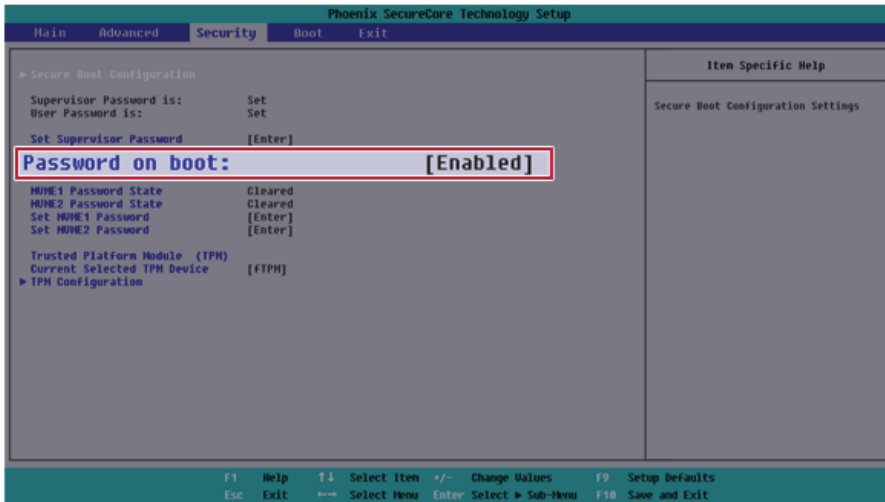
Password on boot

Password on boot protects the system by requesting **[Set Supervisor Password]** or **[Set User Password]** during boot up.

- 1 After opening the system setup screen, use the arrow keys to move to **[Security]**.
- 2 When the **Security** item appears, set a password for **[Set Supervisor Password]** or passwords for both **[Set Supervisor Password]** and **[Set User Password]**.



- 3 The popup screen will show up, after selecting **[Password on boot]** and press **[Enter]**. After selecting **[Enabled]** and press **[Enter]**, **[Password on boot]** will be complete.



Set NVMe™ Password / SSD Password

Tip TIP

Some models installed with NVMe™ may not support the password settings.

Depending on the model, the menu name may be displayed as NVMe™ Password, SSD Password, etc.

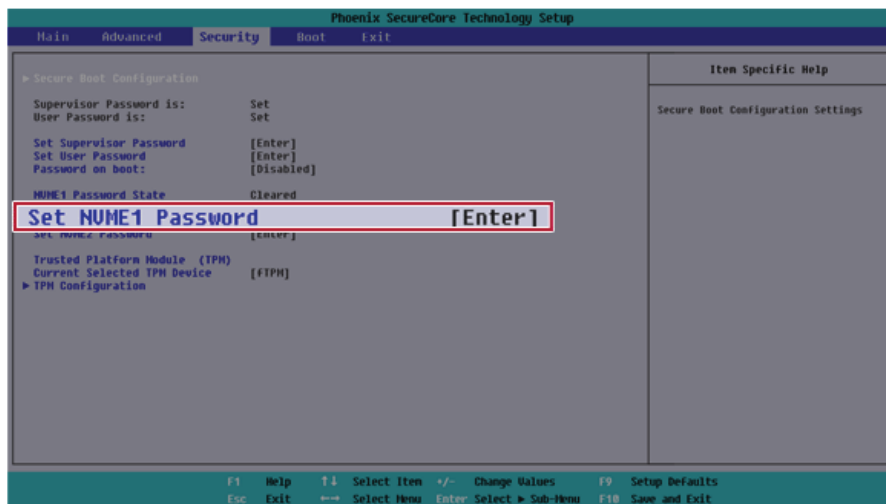
For models equipped with two NVMe™ devices installed, the menu names are displayed as NVMe™1, NVMe™2, and if NVMe™ and SSD are installed, they are displayed as NVMe™1, SSD00, etc.

For models with two NVMe™ or SSD devices, you can set a password for each device. If you set passwords for both, the password input window will appear twice during booting.

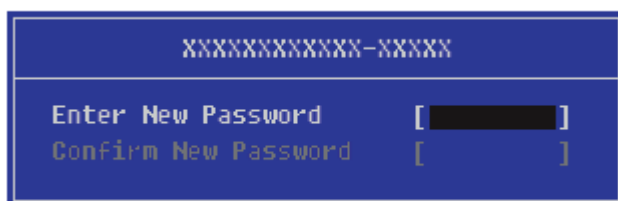
The password input windows appear according to the **[Boot Priority order]** in the **[Boot]** menu.

- 1 After opening the system setup screen, use the arrow keys to move to **[Security]**.

- When the **Security** item appears, select **[Set NVME1 Password]** using the arrow keys and press the [Enter] key.



- When the Password Setting screen appears, enter a password and press the [Enter] key. The password should not exceed 12 characters and should consist of English letters (A - Z), numbers (0 - 9), and special characters or a combination of them.



- 4 When the **Notice** screen appears, press the [Enter] key.



- 5 To save the changes in the system setup, press [F10].
- 6 When the **Setup Confirmation** screen appears, check [Yes] and press the [Enter] key. The PC will restart.

**CAUTION**

If you forgot NVMe™ Password/SSD Password, you cannot restore the NVMe™/SSD.

- The replacement of NVMe™/SSD due to a forgotten NVMe™ Password/SSD Password is not covered by warranty.

Changing or Deleting the Password

You can delete or change the password only after entering the current password.

The model in the example can differ from actual models and is subject to change for performance improvements, without prior notice.

Changing the Password

- 1 Execute System Setup, enter the password, and click [Enter].



A screenshot of a blue rectangular input field with a white border. The word "Password" is displayed in white text on the left side. To the right of the text is a black rectangular redaction box, followed by a white closing bracket "]" on the right edge of the field.

- 2 Change the password in the same way as setting one.

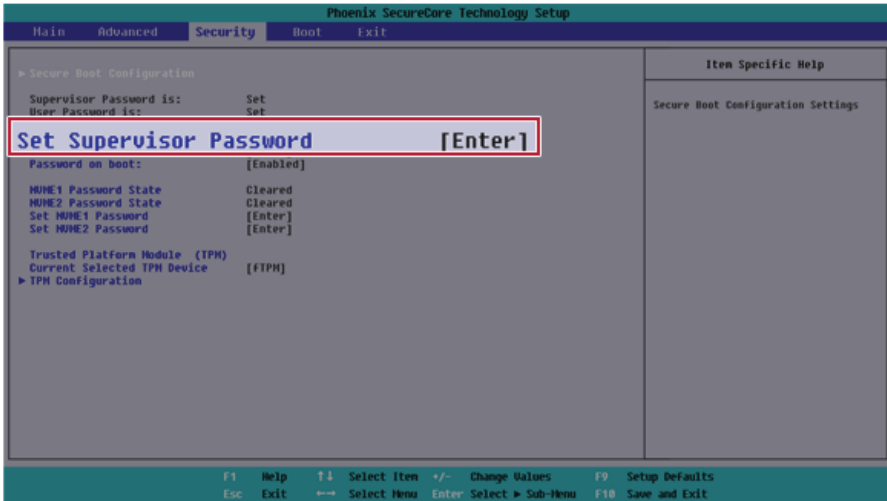
Deleting the Password

- 1 Execute System Setup, enter the password, and press [Enter].

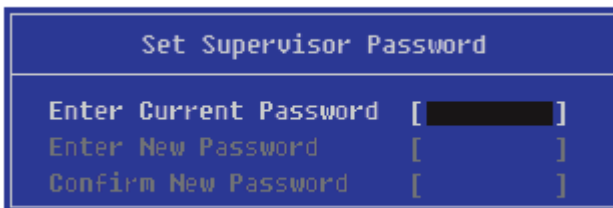


A screenshot of a blue rectangular input field with a white border. The word "Password" is displayed in white text on the left side. To the right of the text is a black rectangular redaction box, followed by a white closing bracket "]" on the right edge of the field.

- After moving **[Security]** by using the arrow keys from the setup start screen, click **[Set Supervisor Password]** and press **[Enter]**.



- When the **Set Supervisor Password** setting screen appears, enter the current password in **[Enter Current Password]**.



- 4 Press [Enter] in [Enter New Password] and [Confirm New Password].

ENGLISH

Set Supervisor Password	
Enter Current Password	[****]
Enter New Password	[]
Confirm New Password	[]

- 5 When the **Notice** screen appears, press the [Enter] key.

Notice
Changes have been saved. [OK]

- 6 To save the changes in the system setup, press [F10].
- 7 When the **Setup Confirmation** screen appears, check [Yes] and press the [Enter] key. The PC will restart.

Setup Confirmation
Save configuration changes and exit now? [Yes] [No]

Deleting the Password (Set NVMe™ Password / SSD Password)

- 1 Execute System Setup, enter the password, and press [Enter].

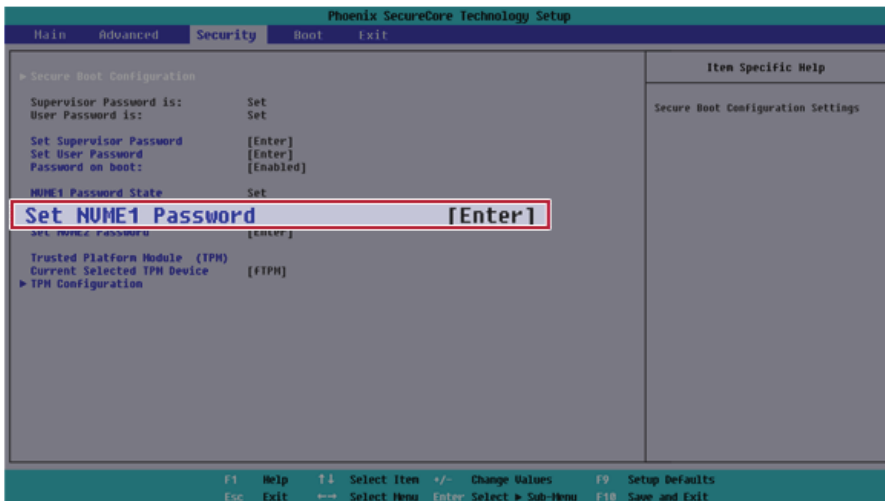


- 2 After moving **[Security]** by using the arrow keys from the setup start screen, click **[Set NVME1 Password]** and press [Enter].

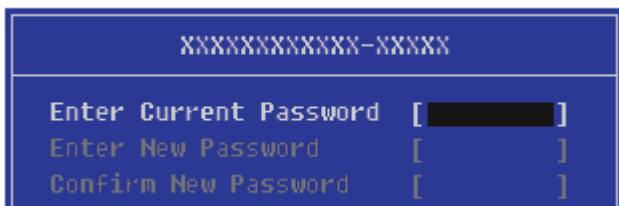
Tip

Depending on the model, the menu name may be displayed as NVMe™ Password, SSD Password, etc.

For models equipped with two NVMe™ devices installed, the menu names are displayed as NVMe™1, NVMe™2, and if NVMe™ and SSD are installed, they are displayed as NVMe™1, SSD00, etc.



- When the Password setting change screen appears, enter the current password in the **[Enter Current Password]** field.



```
XXXXXXXXXXXX-XXXXX
Enter Current Password [ ]
Enter New Password    [ ]
Confirm New Password  [ ]
```

- Press **[Enter]** in **[Enter New Password]** and **[Confirm New Password]**.



```
XXXXXXXXXXXX-XXXXX
Enter Current Password [**** ]
Enter New Password    [ ]
Confirm New Password  [ ]
```

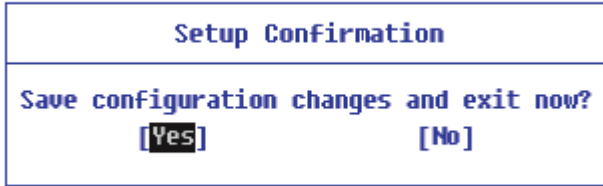
- When the **Notice** screen appears, press the **[Enter]** key.



```
Notice
Please power off and restart!
[OK]
```

- To save the changes in the system setup, press **[F10]**.

- 7 When the **Setup Confirmation** screen appears, check **[Yes]** and press the **[Enter]** key. The PC will restart.



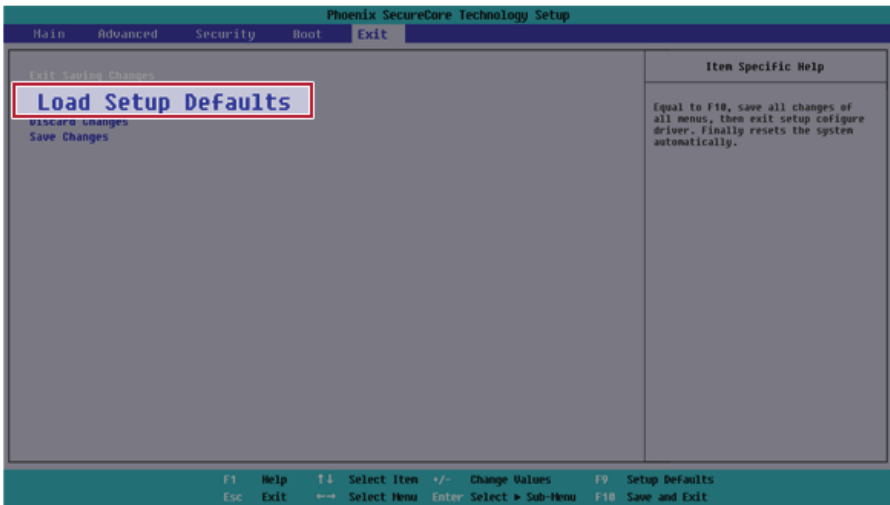
Restoring the Factory Default Settings

ENGLISH

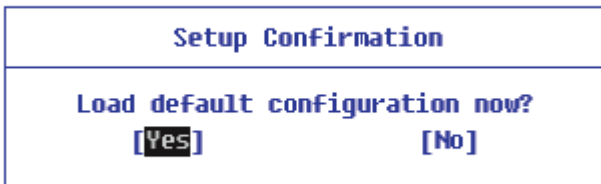
If you have changed the system setup by mistake, you can restore the default settings.

The model in the example can differ from actual models and is subject to change for performance improvements, without prior notice.

- 1 After opening the system setup screen, use the arrow keys to move to **[Exit]**.
- 2 Click **[Load Setup Defaults]** by using the arrow keys and pressing [Enter].

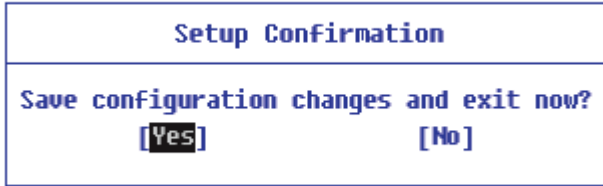


- 3 When the **Setup Confirmation** screen appears, check **[Yes]** and press the [Enter] key. The settings will be reset to the factory default.



- 4 To save the changes in system setup, press [F10].

- 5 When the **Setup Confirmation** screen appears, check **[Yes]** and press the **[Enter]** key. The PC will restart.



Tip TIP

- When you press **[F9]**, you can use **[Load Setup Defaults]**.

Changing the Boot Order

ENGLISH

The user can change the boot order according to his or her needs, or select a boot device

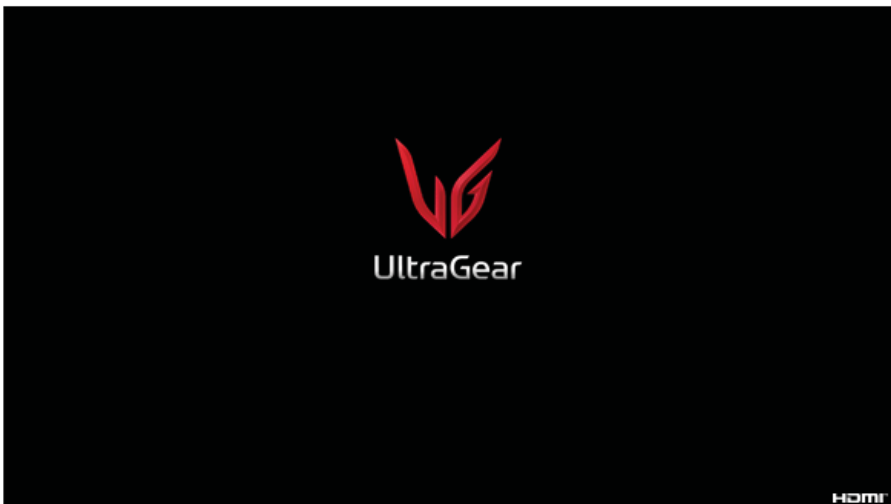
The model in the example can differ from actual models and is subject to change for performance improvements, without prior notice.

Tip TIP

To use the system setup (F2), booting device selection (F10), or recovery (F11), you need to restart the system (click **[Restart]** in the system power menu) and then immediately press the corresponding function key due to the fast booting speed.

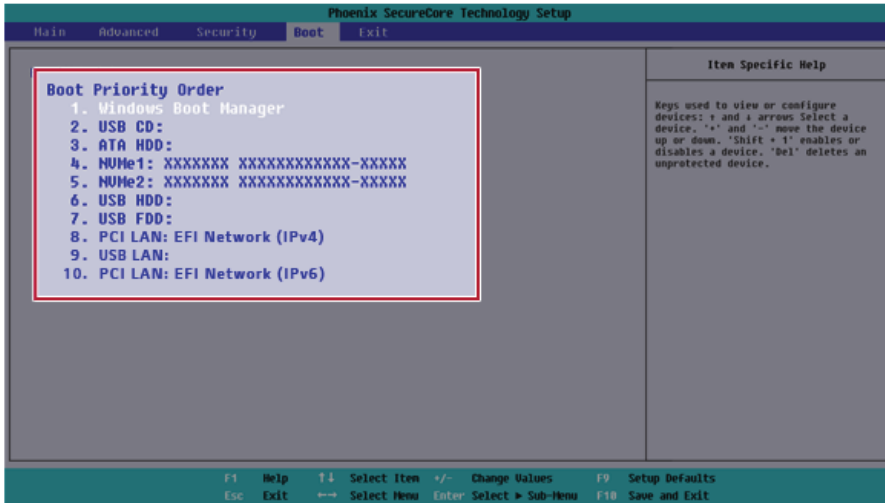
Changing the Boot Order

- 1 Reboot the system and press [F2].



- 2 Move to the **[Boot]** menu when the system setup screen appears.

- 3 Go to **[Boot Priority Order]** and press **[F5]** or **[F6]** to change the booting order.



- 4 Press the **[F10]** key, and when the **Setup Confirmation** screen appears, select **[Yes]** and press the **[Enter]** key.

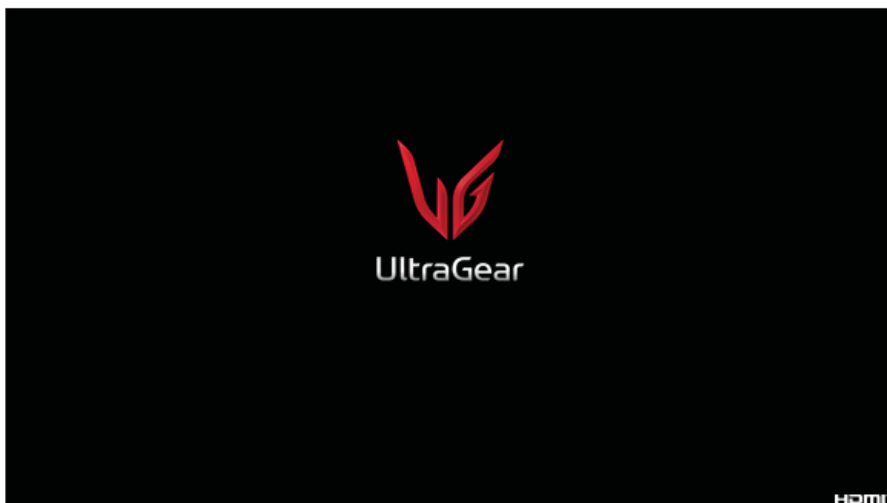


- 5 The changes are saved and the system reboots.

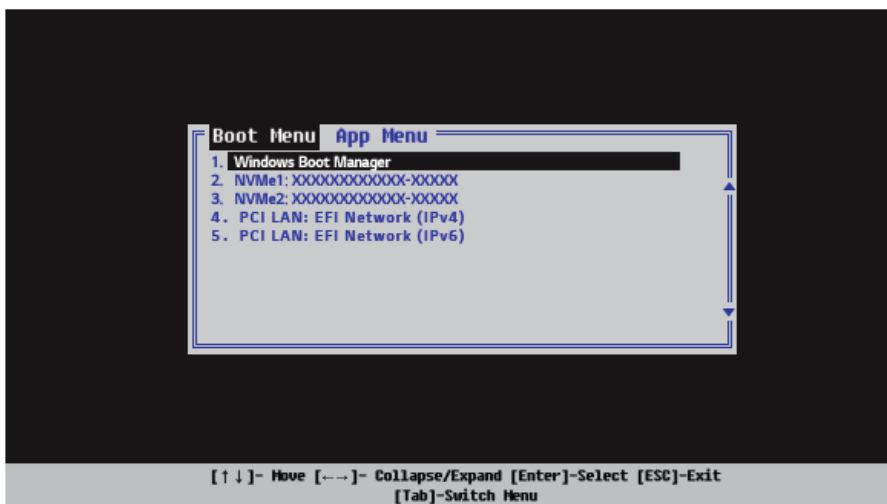
Selecting a Booting Device to Use

ENGLISH

- 1 Reboot the system and press [F10].



- 2 When the Select Booting Device screen appears, select the device.



- 3 Boots using the selected device.

Setting Auto Scaling


ENGLISH

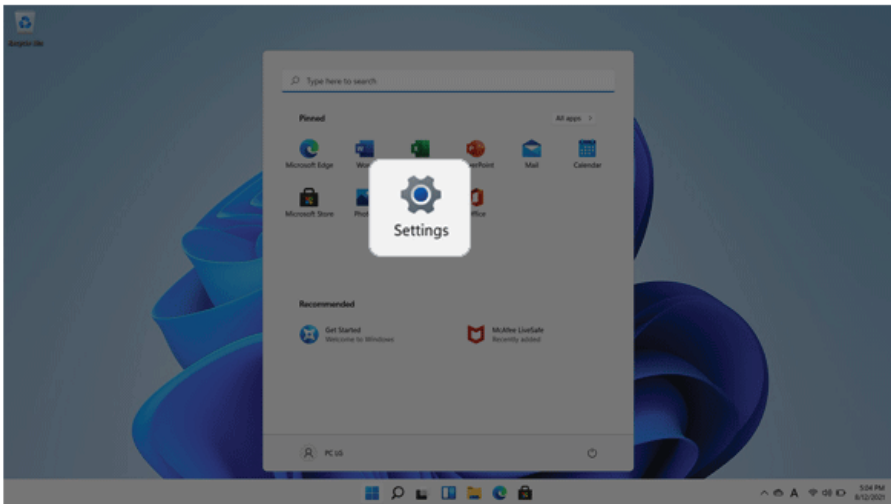
The Windows **Auto Scaling** feature for user's convenience may partially blur the screen or display some icons and texts larger.

Refer to the following information to change the DPI scaling to suit your needs.

- 1 Select the Start button [] > [Settings].

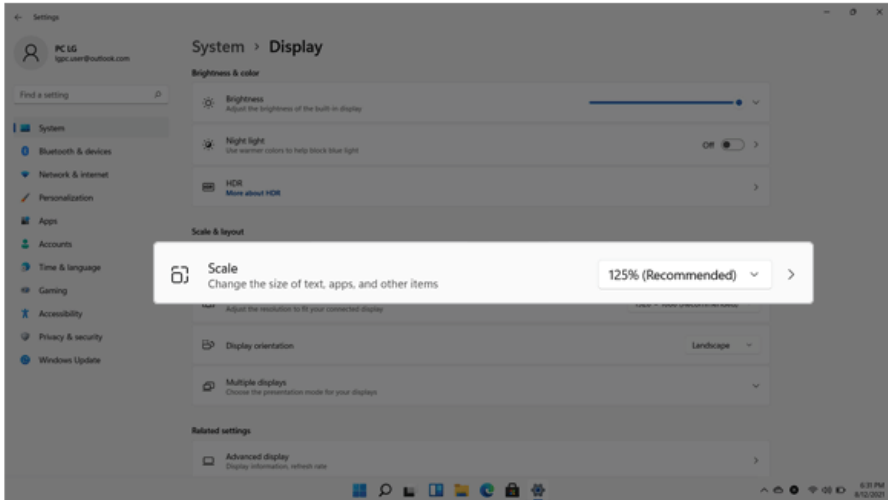
Tip TIP

Press the [] key or [Ctrl] + [Esc] on the keyboard to display the Start screen.



- 2 Select [System] > [Display].

3 Changing the [Scale] item value changes the auto scaling settings.



TIP

After changing the Auto Scaling settings, some apps must be shut down and restarted for the scaling and layout to take effect.

Using Instant Booting

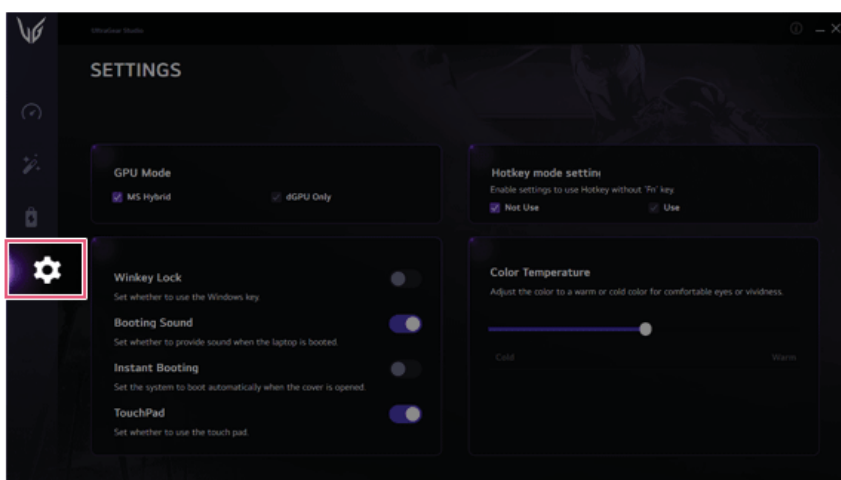
ENGLISH

Instant Booting allows the system to boot automatically when the notebook PC cover is opened, so that you can use the system without pressing the power button.

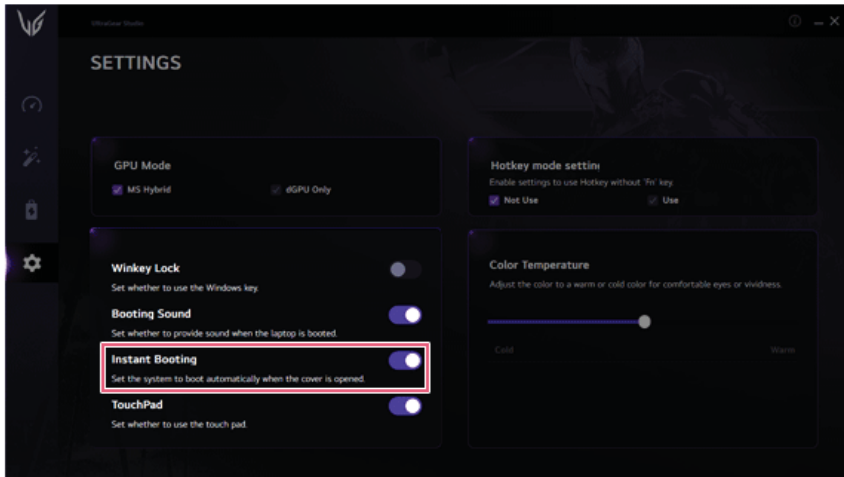
- 1 Select the Start button [] > [All Apps] and run [UltraGear Studio].
- 2 In the **UltraGear Studio** screen, select the [SETTINGS].

Tip TIP

When you press the [Fn] + [F1] keys on the keyboard, the **UltraGear Studio** setup screen appears.



- 3 Set [Instant Booting] to [ON].



- 4 Shutdown the system and close the notebook PC cover.
- 5 When the cover is opened, the notebook PC turns on and the system starts to boot automatically.

FAQ

LG Recovery Center RE

If booting is impossible due to an error with the system, you can recover the system using **LG Recovery Center RE**.

TIP

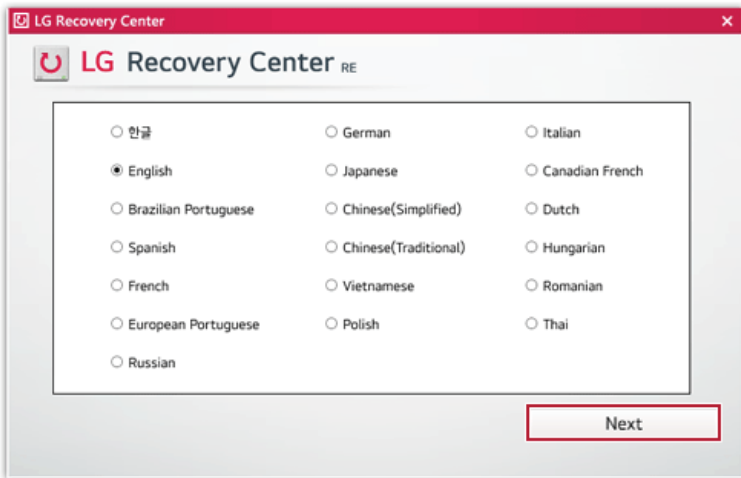
It is recommended that you create a recovery drive in case a serious error occurs in the system.

CAUTION

If you have deleted the restoration data in the protected area of the hard disk, the restore function may not work.

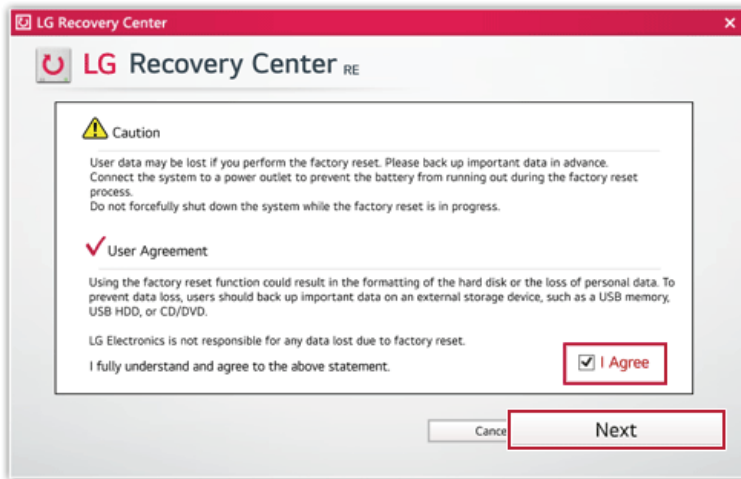
All data is lost during the initialization, so you must backup all critical data in advance.

- 1 Turn on the PC and press [F11].
- 2 Once **LG Recovery Center RE** is started, select a language and press the [Next] button.



- 3 When the cautions and user agreement screen appears, check the [I Agree] button and press the [Next] button.

For recovery, the power adapter must be connected. Connect the system power and then recover the system.



- 4 When factory reset is complete, press the [Complete] button to restart the system.

Setting Auto Scaling

ENGLISH

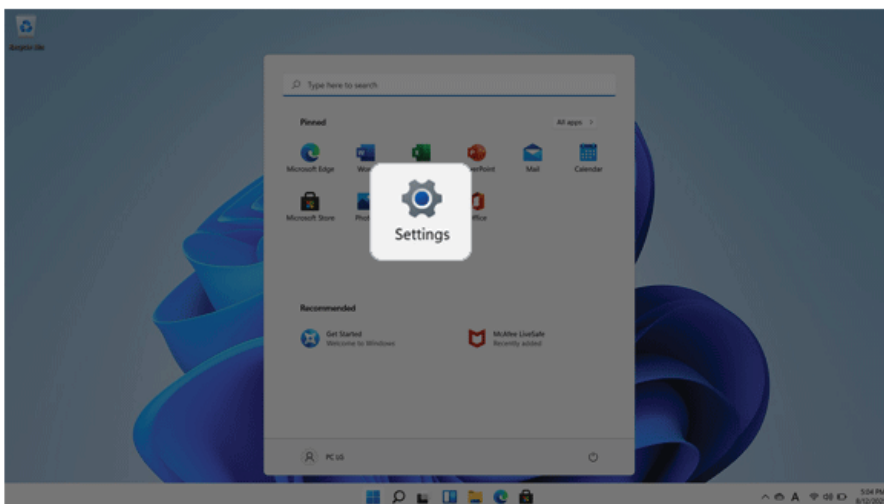
The Windows **Auto Scaling** feature for user's convenience may partially blur the screen or display some icons and texts larger.

Refer to the following information to change the DPI scaling to suit your needs.

- 1 Select the Start button [] > [Settings].

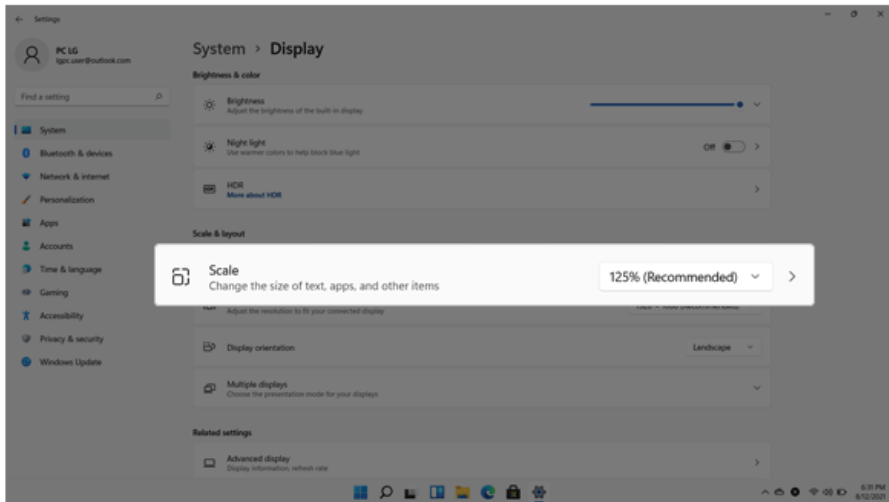
Tip TIP

Press the [] key or [Ctrl] + [Esc] on the keyboard to display the Start screen.



- 2 Select [System] > [Display].

- 3 Changing the [Scale] item value changes the auto scaling settings.



Tip TIP

After changing the Auto Scaling settings, some apps must be shut down and restarted for the scaling and layout to take effect.

Restoring the System

ENGLISH

If the system has an error, you can use Windows' recovery function to recover or restore the system to its initial pre-purchase state.




CAUTION

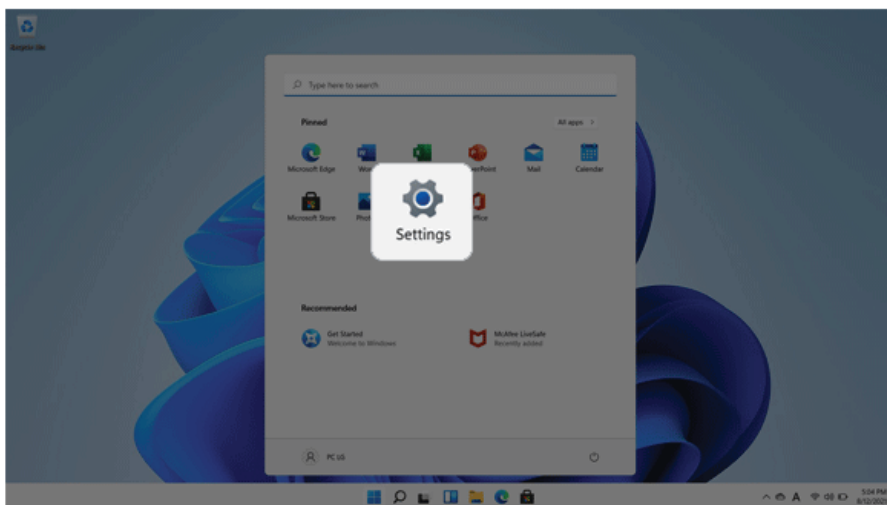
If you have deleted the restoration data in the protected area of the disk, or have arbitrarily installed another operating system, the restore function may not work.

To recover the system, the AC adapter must be connected.

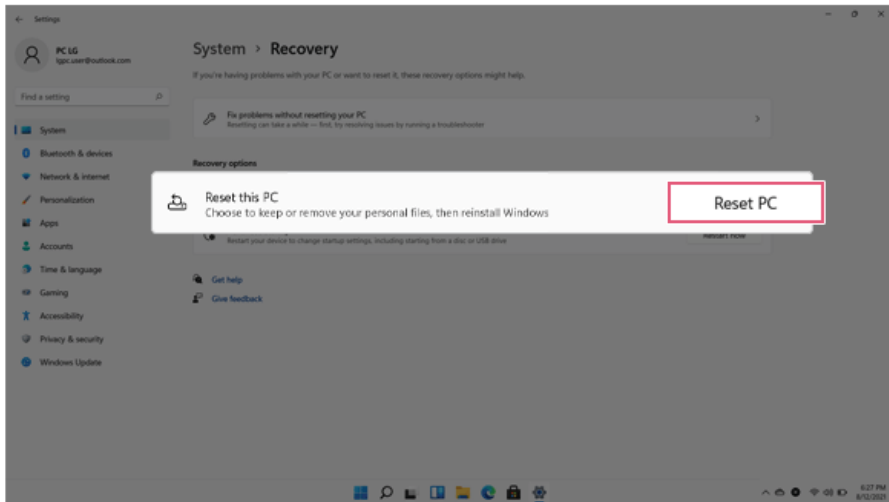
- 1 Select the Start button [] > [Settings].

Tip TIP

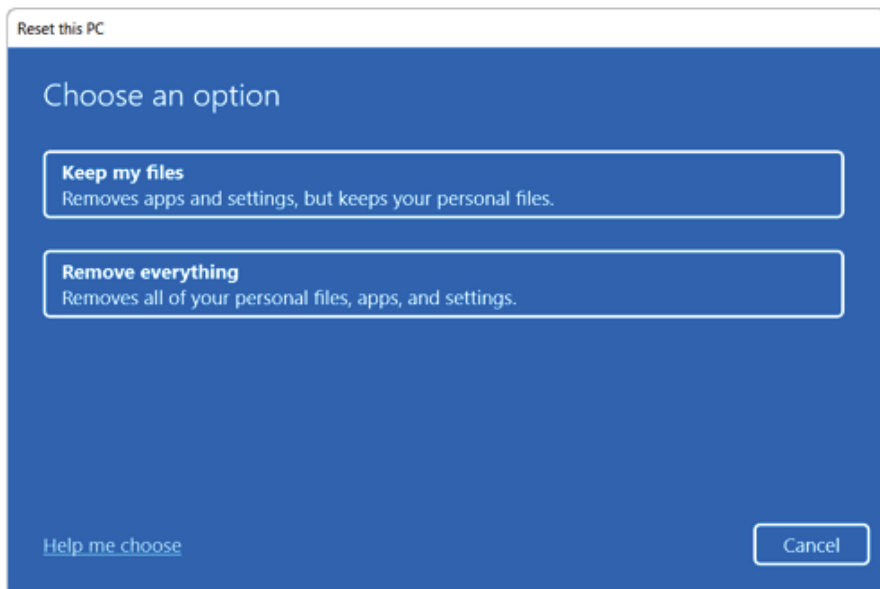
Press the [] key or [Ctrl] + [Esc] on the keyboard to display the Start screen.



- 2 Select [Reset PC] in [System] > [Recovery] > [Reset this PC].



- 3 Select the options you want to proceed with the recovery.

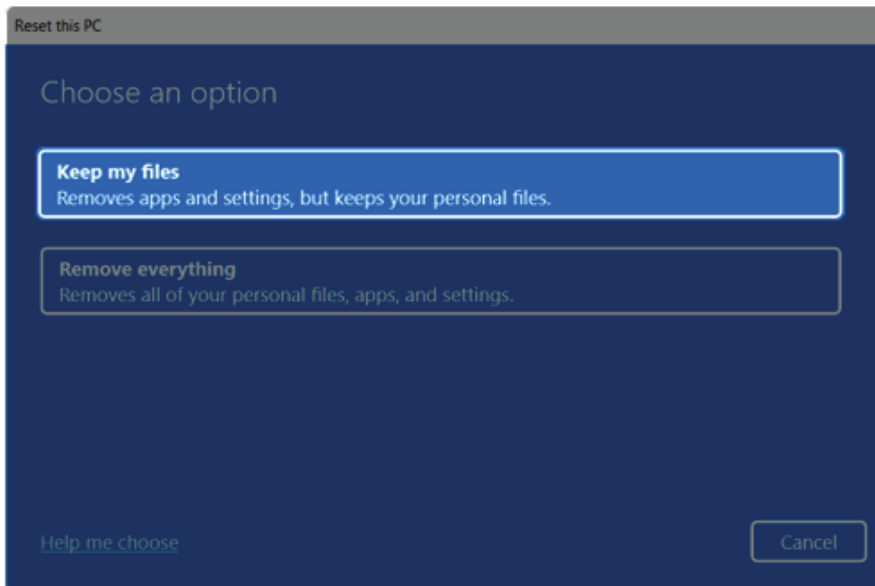


Keep My Files

It removes the apps and their settings without loss of personal files.

- 1 Select [Keep my files].

ENGLISH



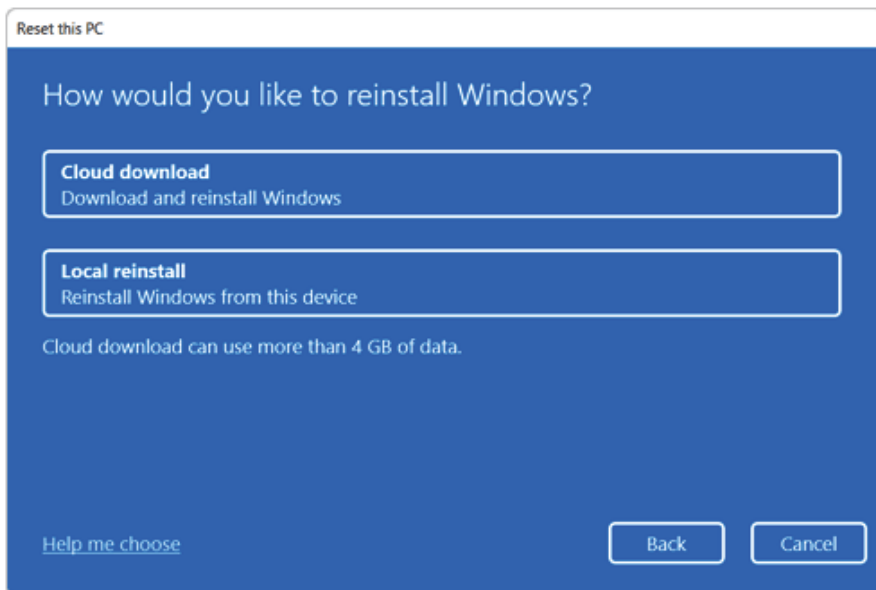
2 Select How to Reinstall Windows.

Tip TIP

If the PC is not connected to the Internet, the screen for selecting Windows installation method does not appear.

[Cloud download] is a menu for downloading **Windows** from **Microsoft** Cloud Server and reinstalling it.

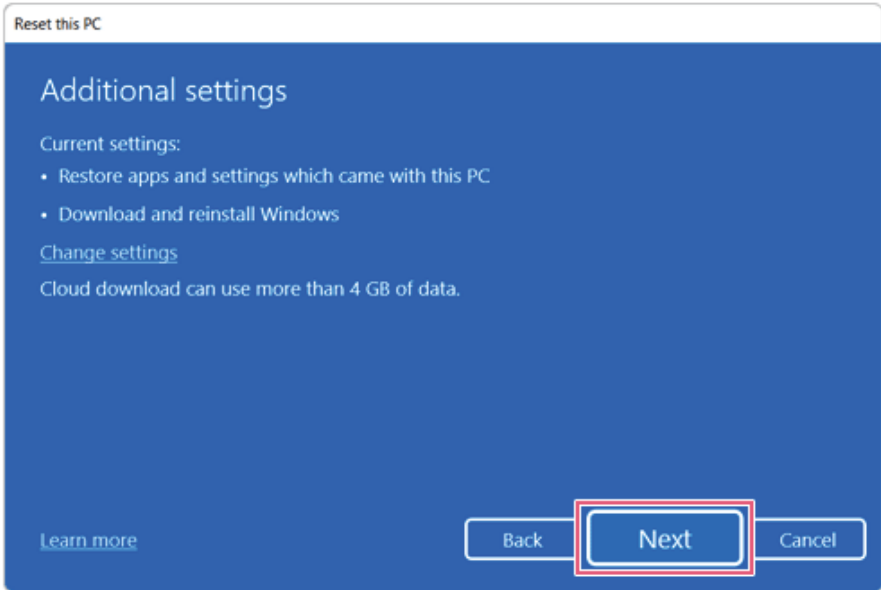
The required time may vary depending on the Internet speed.



- 3 Check the current settings and click [Next] to perform the recovery according to the instructions.

TIP

If you need to change the settings, click [Change settings] and change the settings.



Remove everythings

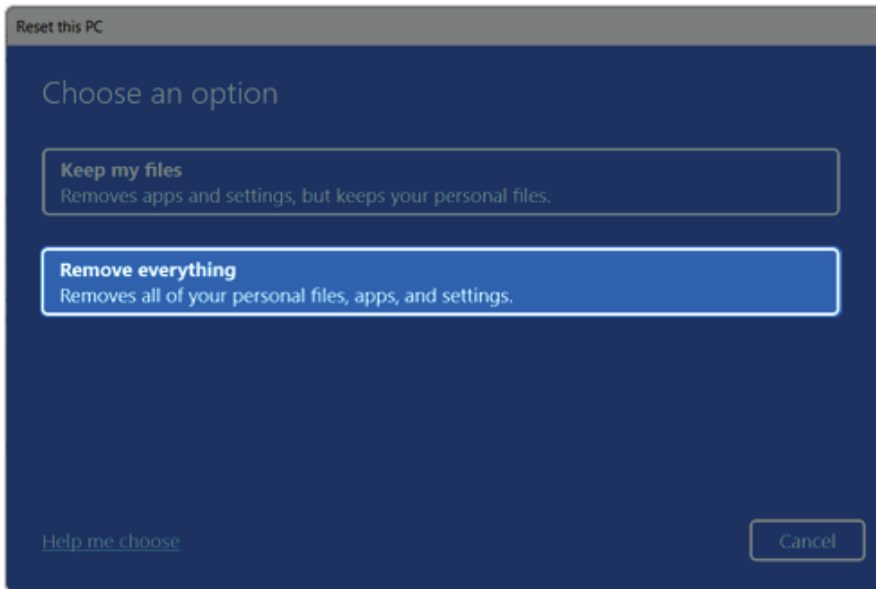
Removes all items from the system and restores the system to its initial pre-purchase state.



CAUTION

All data is lost during the initialization, so you must backup all critical data in advance. It may take about 5 hours or longer depending on the system conditions.

- 1 Select [Remove everything].



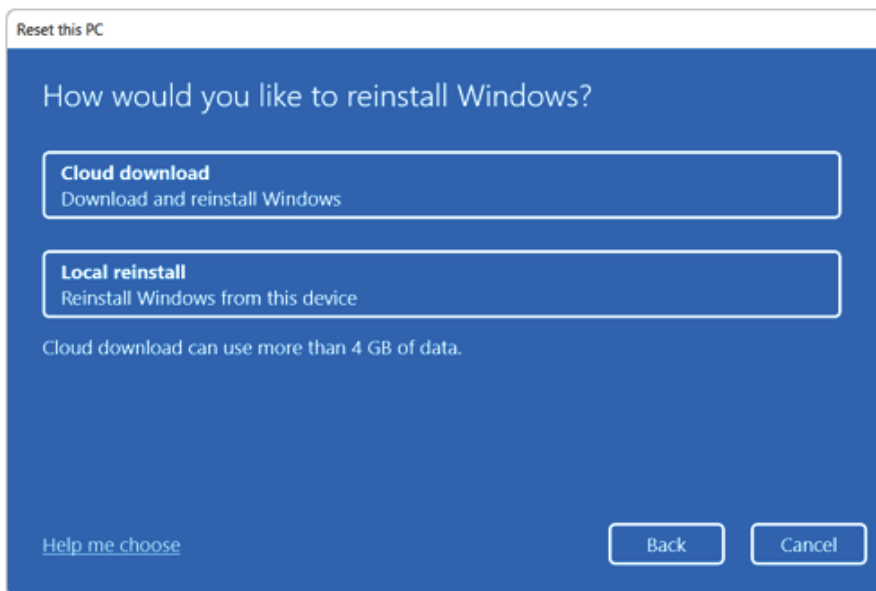
2 Select How to Reinstall Windows.

Tip TIP

If the PC is not connected to the Internet, the screen for selecting Windows installation method does not appear.

[Cloud download] is a menu for downloading **Windows** from **Microsoft** Cloud Server and reinstalling it.

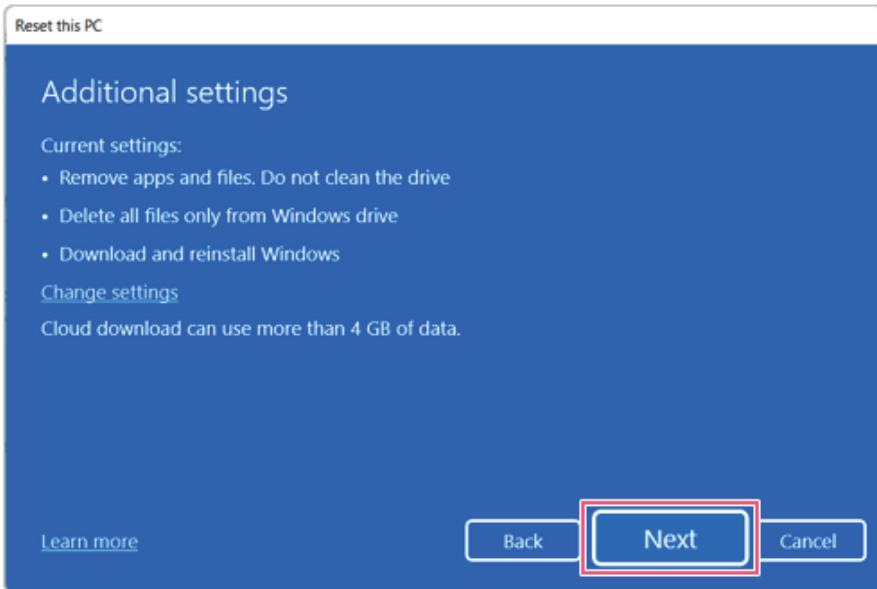
The required time may vary depending on the Internet speed.



- 3 Check the current settings and click [Next] to perform the recovery according to the instructions.

Tip TIP

If you need to change the settings, click [Change settings] and change the settings.



Connecting to External Display

Connecting to the HDMI Port

HDMI is a multimedia interface that can integrate and transmit video and audio signals.

In some models, DTS Audio may not work when you use HDMI.

TIP


Ensure the monitor power is off before connecting the external monitor to the PC.
HDMI support both HDCP 1.4 and HDCP 2.3.

- 1 Connect the HDMI cable to the PC and the external device (TV, monitor) that supports HDMI.
- 2 HDMI port transfers both video and audio simultaneously. Hence, there is no need for a separate audio connection.



- 3 On the PC, press [Fn] + [F7] to display monitor (projector) toggling screen. Select the desired screen output.

TIP

- Everytime [] + [P] keys are pressed, the screen output option changes. Release the keys to display the selected screen output.

**CAUTION**

- If you do not set Speaker as the default value after disconnecting the HDMI cable, the system may not produce any sound.
- If a program was running already, you must exit and restart the program to produce sound.

Using a Wired/Wireless Router

A wireless / regular router connects several PCs and mobile devices to one internet line and enables the use of internet and the network.

A wireless / regular router has to be bought separately. Refer to the manual provided by the manufacturer for instructions.

Connecting a Wireless or Regular Router

If one internet line is used with a wired / wireless router and several devices are connected, this may result in a slower connection.

In case of a wireless LAN, it is recommended to change the network name and security settings for a more secure connection.

Network speed can differ according to operation environment and specifications.

- 1 Connect the internet cable of the modem that was provided by your internet provider to the router's WAN port.
- 2 Connect all devices (PC, IPTV, internet phone, etc.) with a LAN cable to LAN ports 1 to 4 of the router.

The number of LAN ports can vary for each router model.

- 3 Please refer to the manual provided by the router manufacturer for setup of the network and internet.

Wireless LAN

The wireless network (Wireless LAN) is the network environment that connects a PC with the internet provider or company network through an Access Point (wireless or regular router).



OPTION

Wireless LAN is optional. Hence, it may not be installed in some models.

Turning On/Off **Airplane Mode**

Prior to using the wireless LAN, press [Fn] + [F6] to turn off **Airplane Mode**.

Pressing [Fn] + [F6] keys will turn on or off the **Airplane Mode**. If you are not going to use the product for a while, keep the **Airplane Mode** turned on to reduce the battery power consumption.

Using the Wireless LAN

If an Access Point (wired or wireless router) is in the vicinity of the PC, the wireless LAN can easily be accessed.

When searching for a wireless LAN, multiple Access Points may be discovered depending on the location of use.

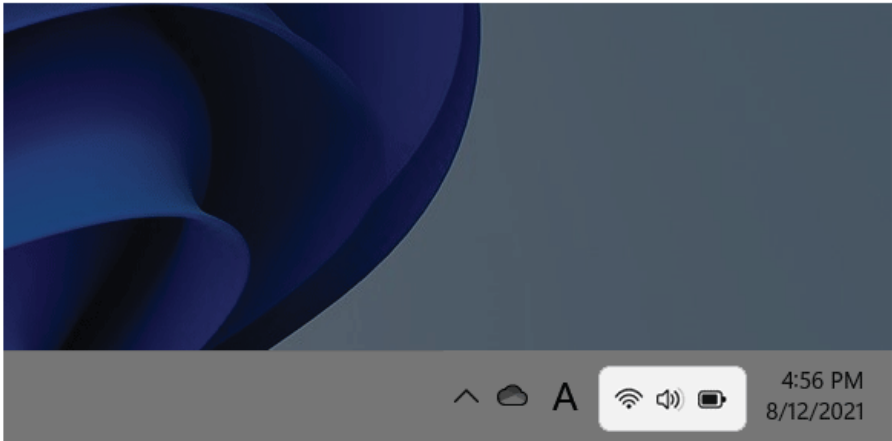
In case no accessible wireless LAN is near the PC, no Access Point might be found.

A password-protected Access Point cannot be accessed without the correct password.

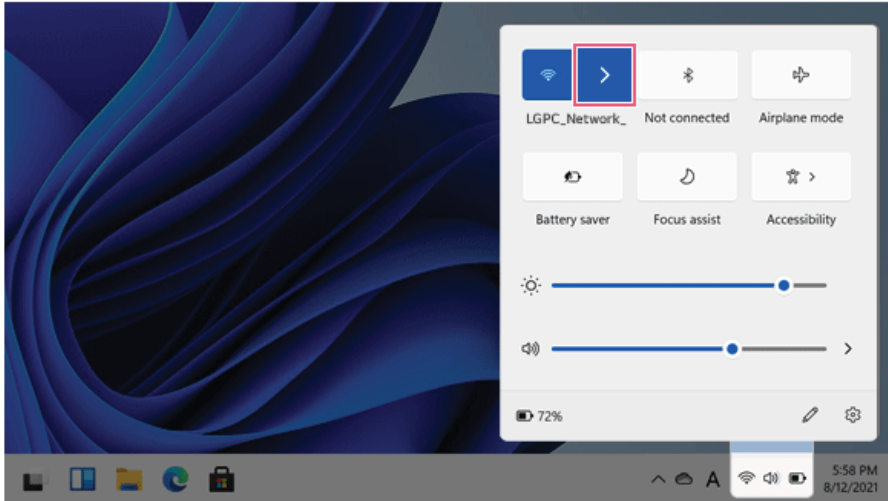
- 1 Select **[Quick Settings]** on the right side of the taskbar.

Tip TIP

The displayed icons may differ from the figures herein.

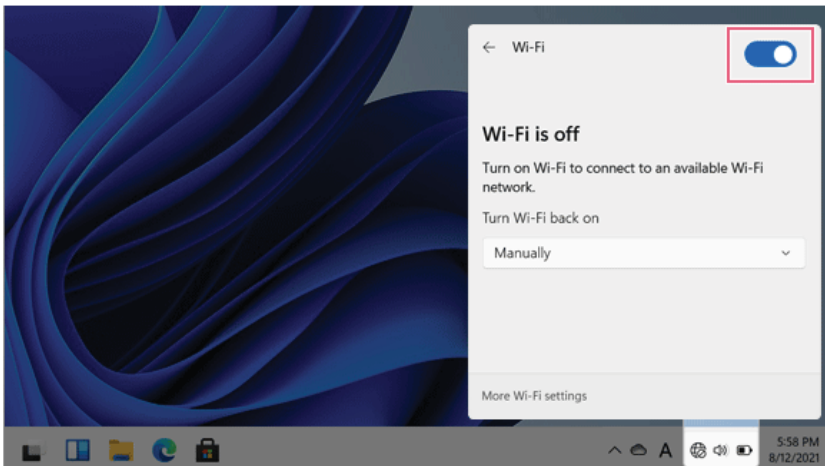


- 2 Select **Manage Wi-Fi Connections** [>] to search for near Access Point.



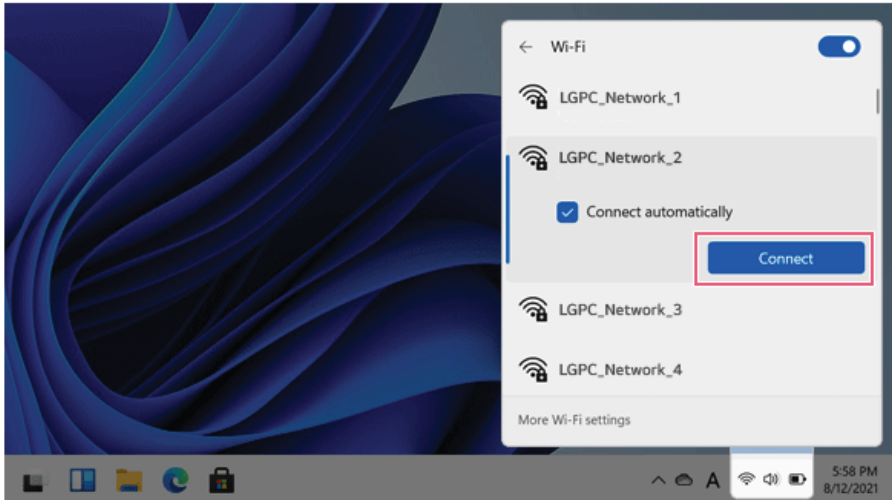
TIP

When **Wi-Fi** is turned off, set [Wi-Fi] to On.



- 3 Select the Access Point you want to connect to and press [Connect].

ENGLISH



- 4 If a connection is established, [Connected] appears below the Access Point name.
- 5 Click the Web Browser icon to check whether the internet is operating normally.


Wired LAN

LAN is the network environment that users can connect to by using a cable to connect to their internet providers or the company's network.


Using Wired LAN

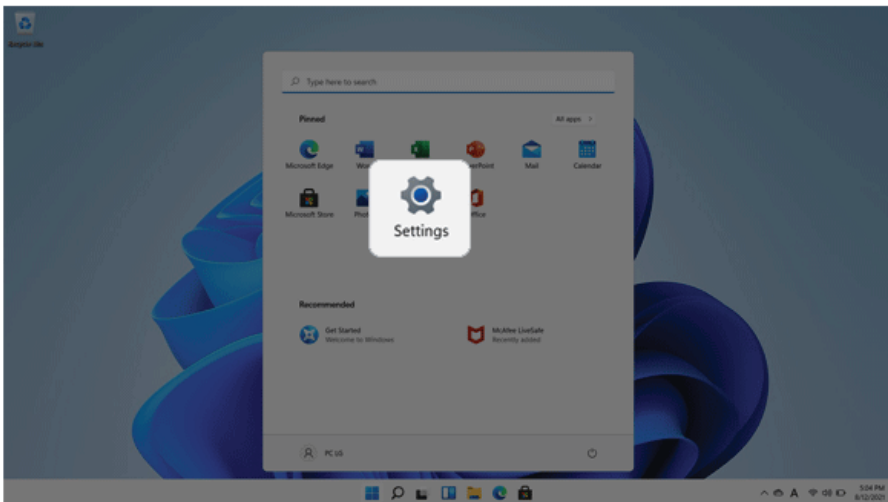
LAN is installed with an automatic IP (DHCP) as default value.

Please refer to the following instructions for details on setting up an automatic IP (DHCP) or manual IP.

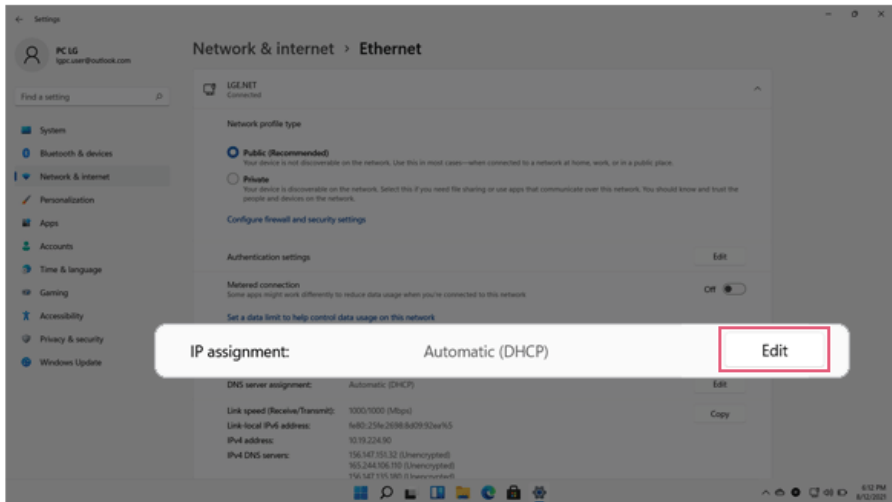
- 1 Connect the wired LAN cable to the LAN port.
- 2 Press the [] button and select the [Settings] menu.

 **TIP**

Press the [] key or [Ctrl] + [Esc] to display the Start menu.



- 3 Select [Edit] in [Network & Internet] > [Ethernet] > [IP assignment].



- 4 To use an automatic IP (DHCP), select [Automatic]. If you wish to use a static IP, set [Manual] > [IPv4] to [On] and enter the necessary item.

Contact the network service provider or administrator to use a static IP.

Edit IP settings

Manual

IPv4

On

IP address

Subnet mask

Gateway

Preferred DNS

Preferred DNS encryption

Unencrypted only

Alternate DNS

Save Cancel

- 5 Select [Save] to complete the network setup.
- 6 Click the Web Browser icon to check whether the internet is operating normally.