

EUT Internal Photos

Figure 7
Internal View



Figure 8
Internal View

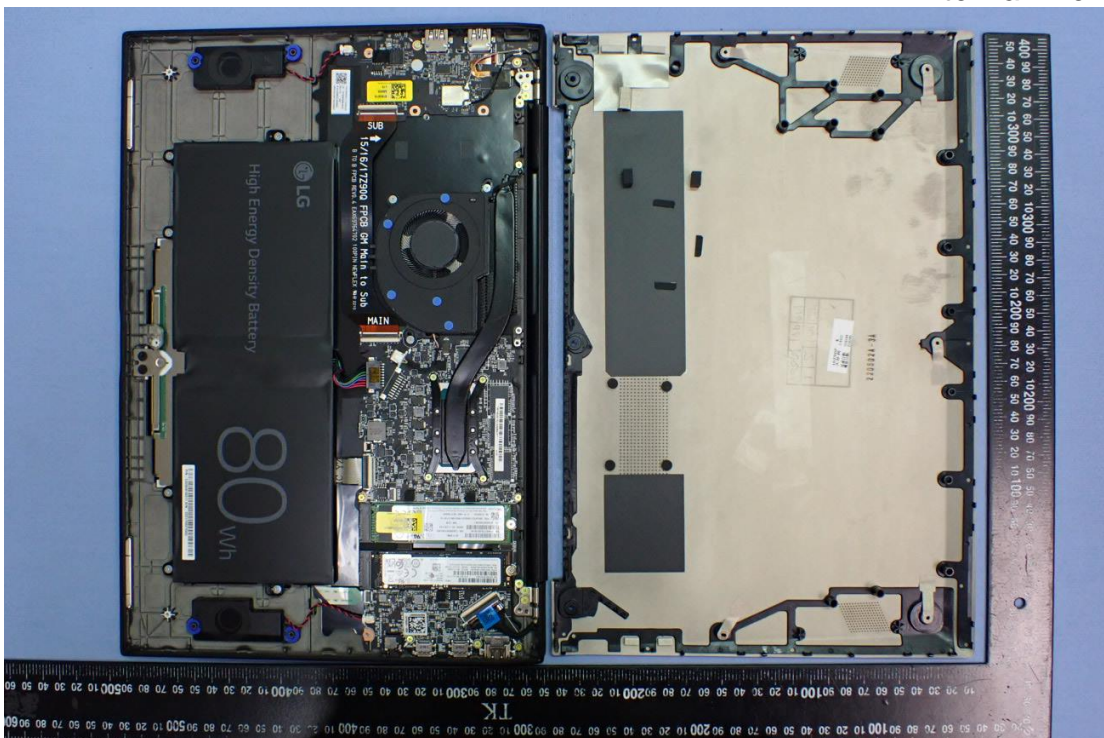


Figure 9
Internal View

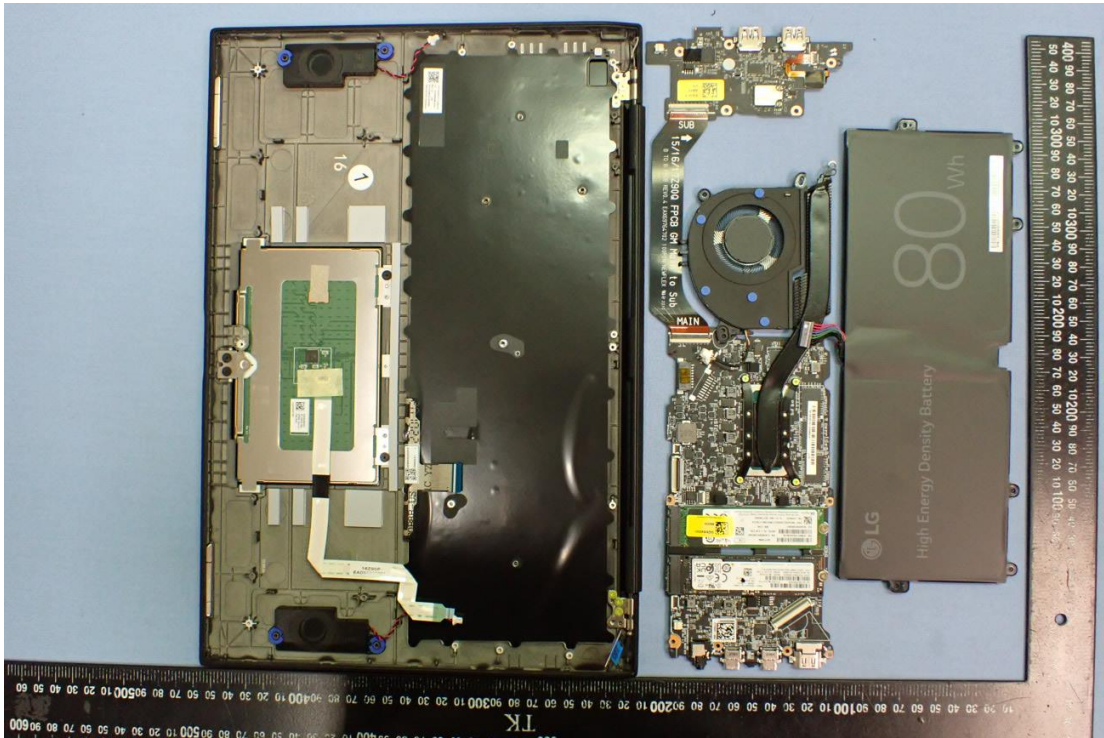


Figure 10
Internal View

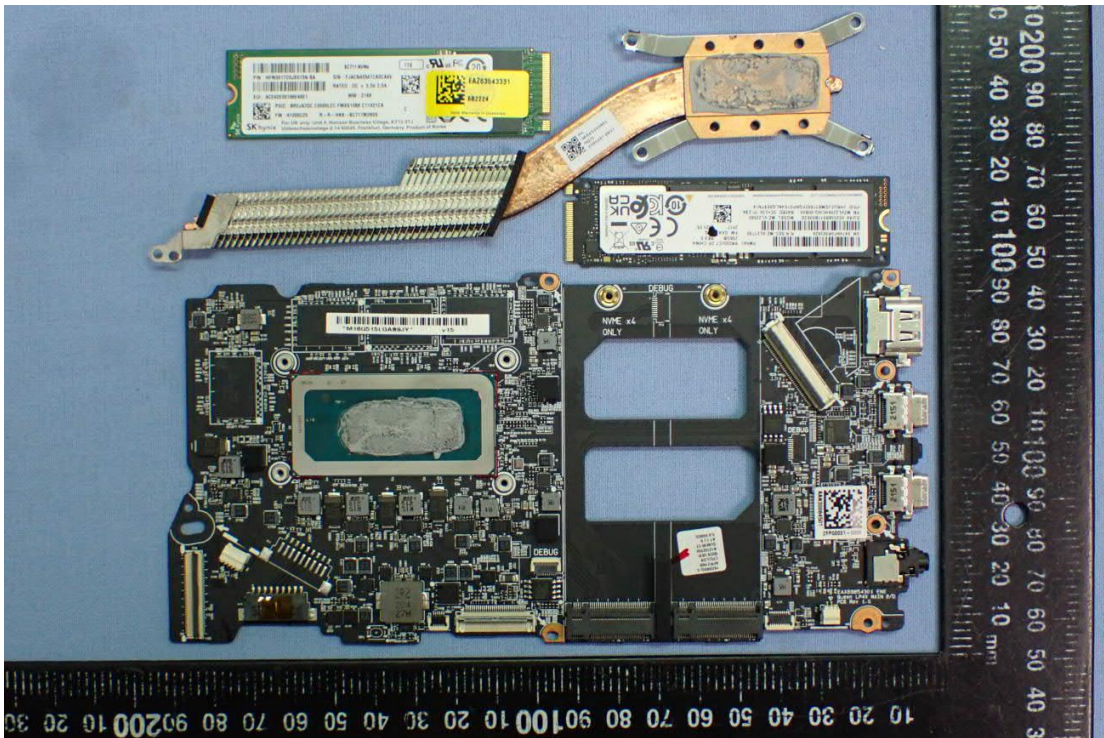


Figure 11
Internal View

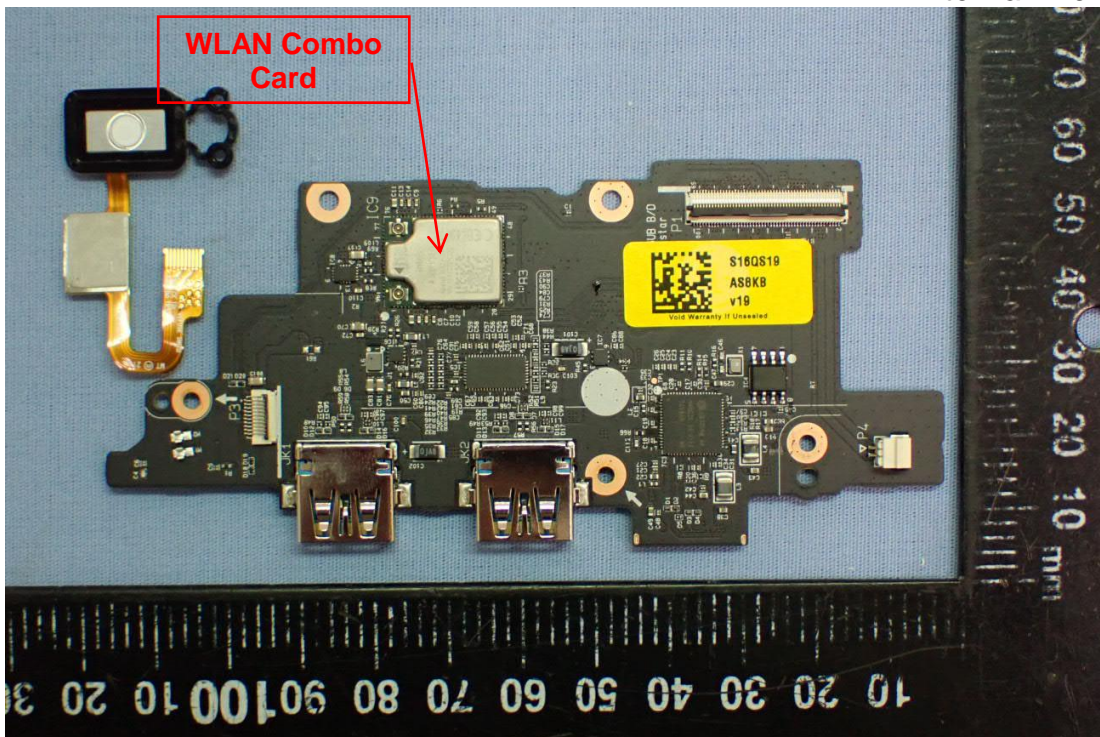


Figure 12
Internal View (Antenna Location)

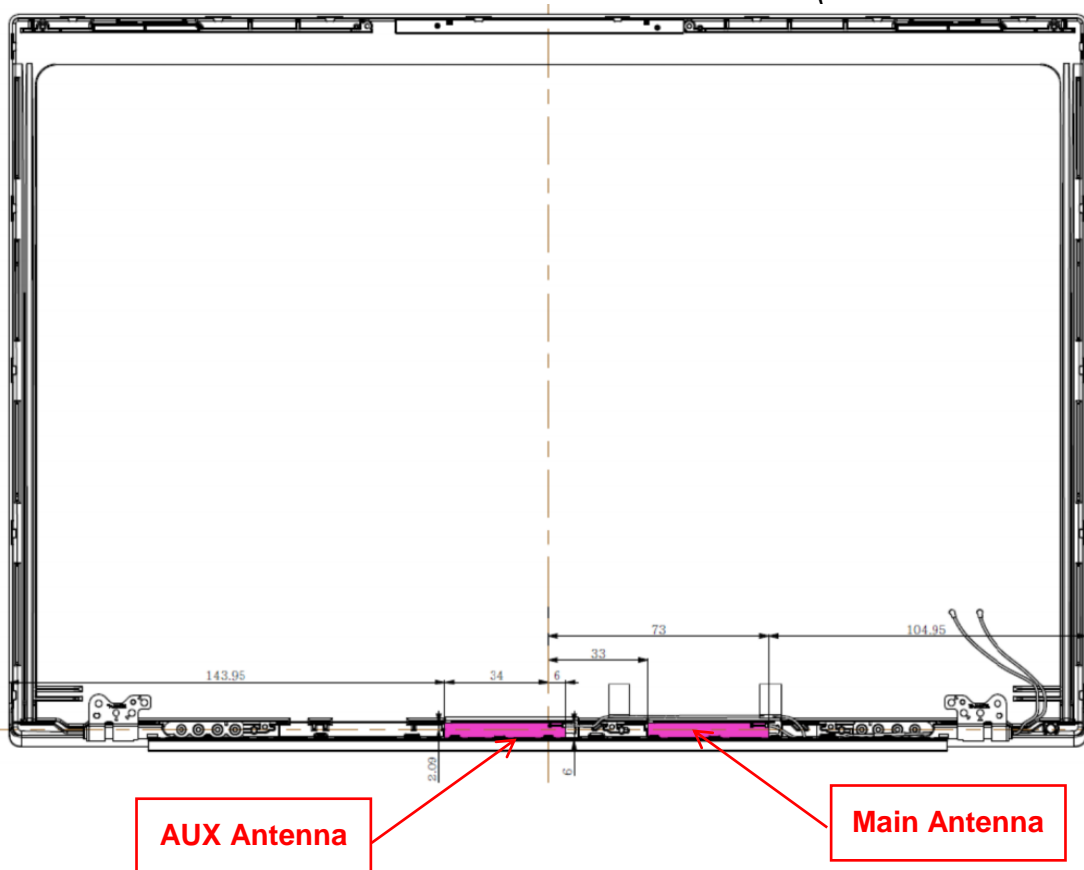


Figure 13
Antenna View

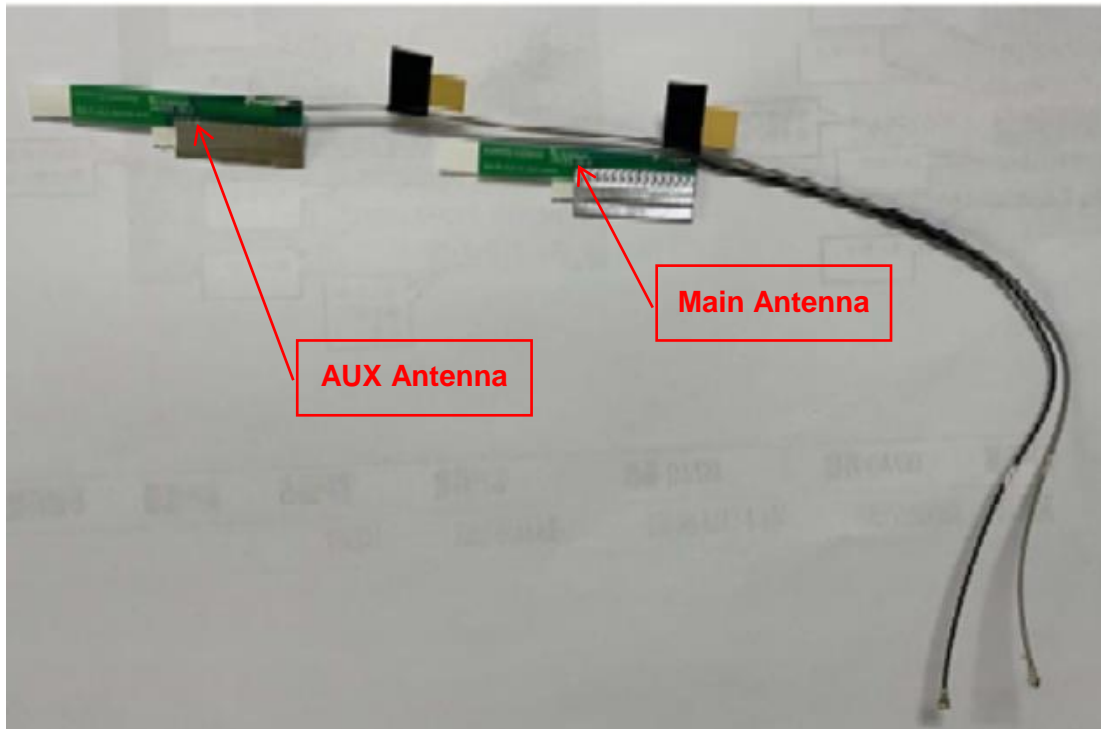


Figure 14
Antenna View



Figure 15
Main Board, Front View

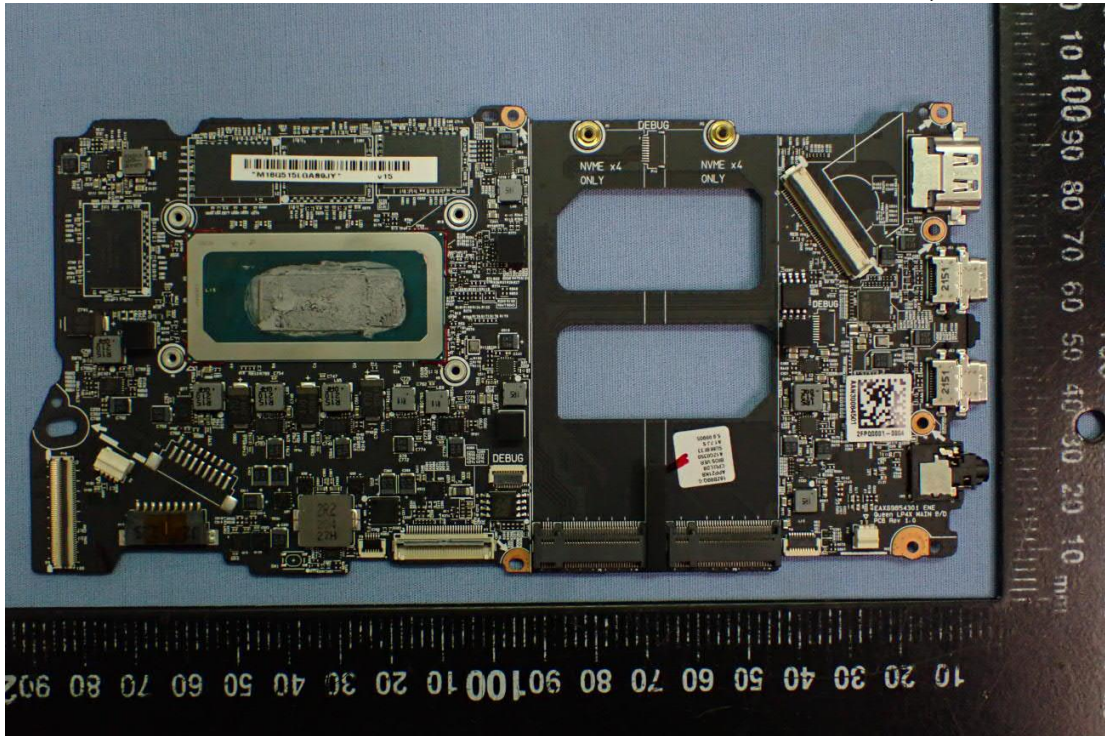


Figure 16
Main Board, Back View

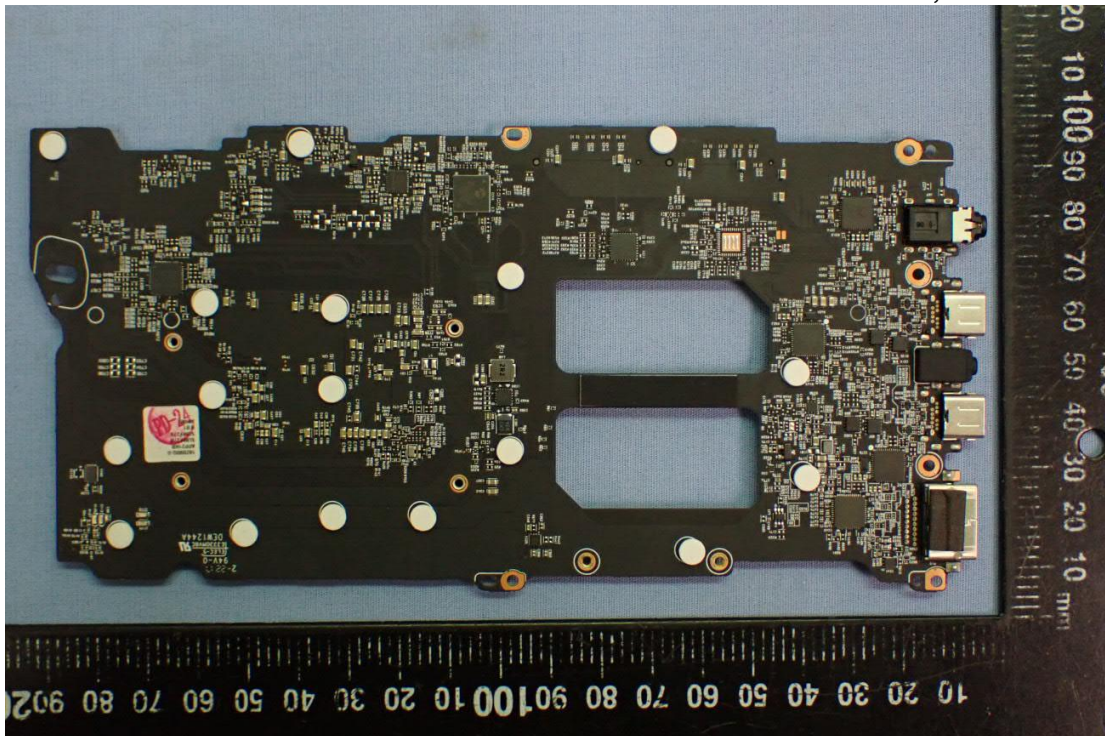


Figure 17
SUB Board, Front View

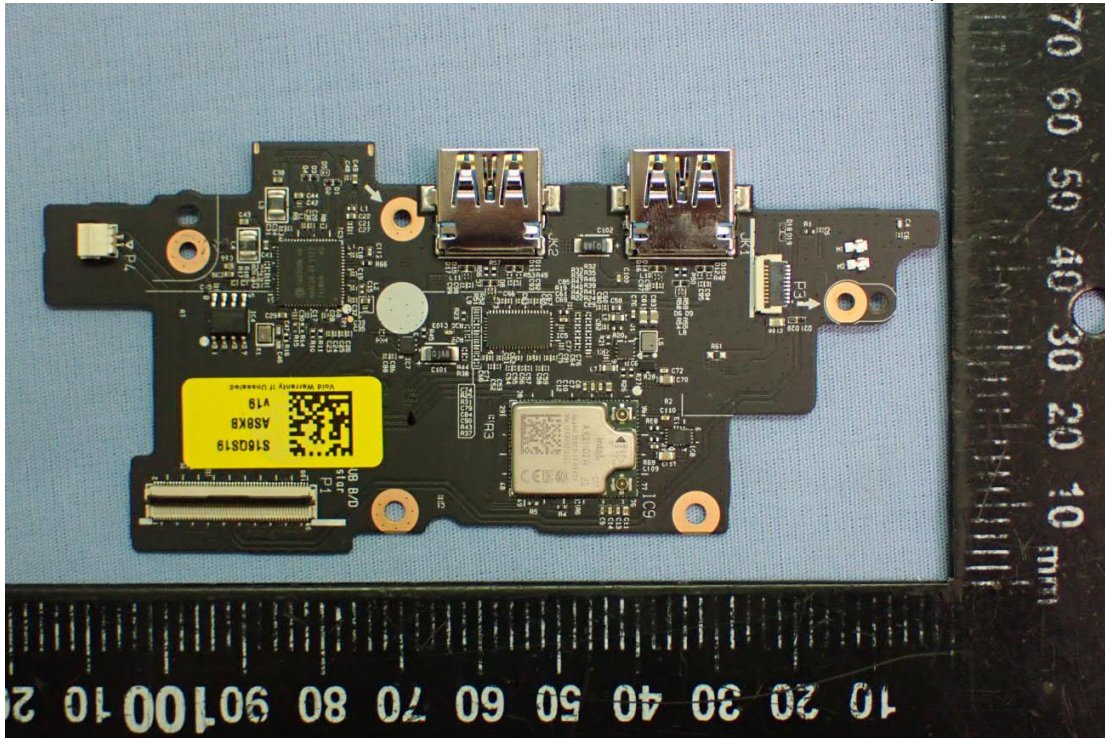


Figure 18
SUB Board, Back View

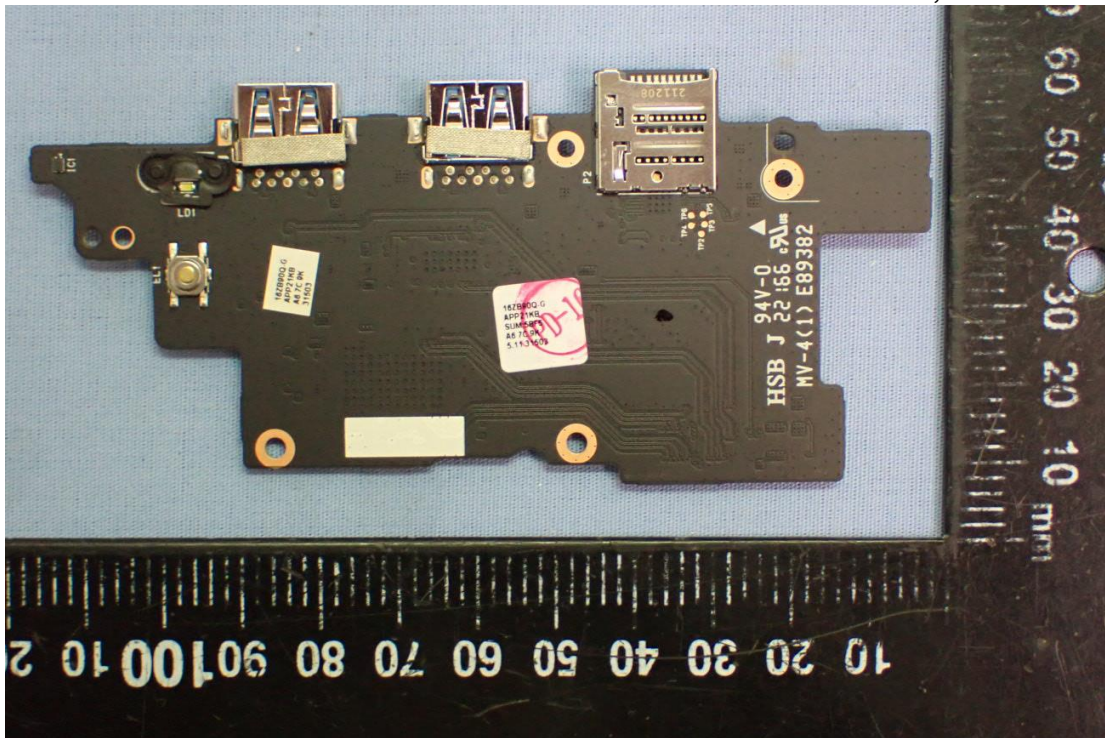


Figure 19
WLAN Combo Card, Front View



Figure 20
WLAN Combo Card, Back View

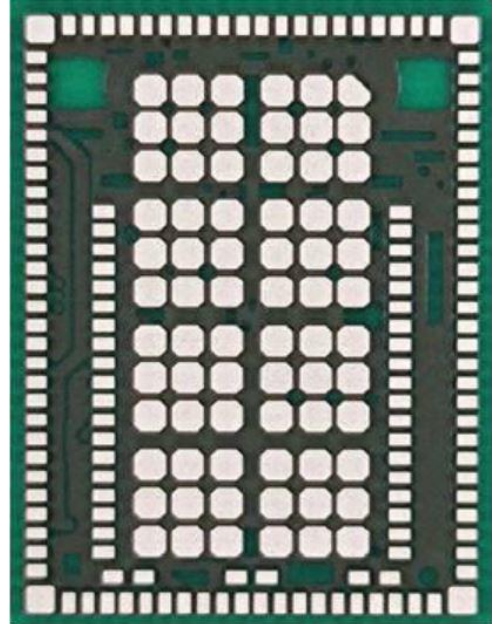
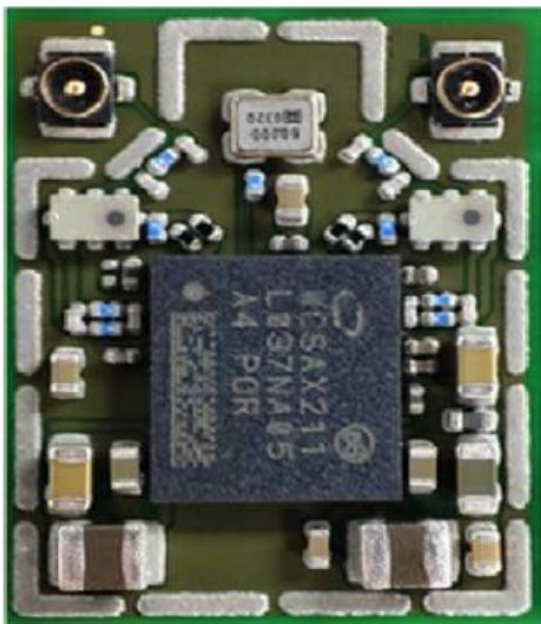


Figure 21
Worse 1TB SSD, Front View



Figure 22
Worse 1TB SSD, Back View

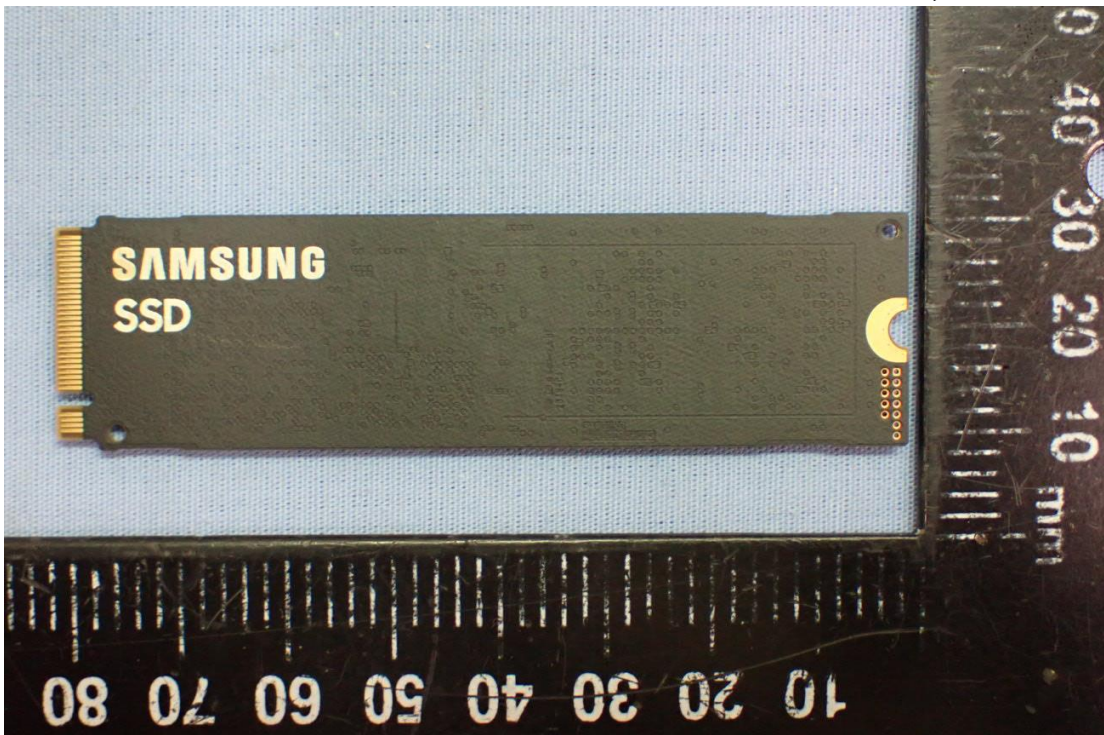


Figure 23
Worse 256GB SSD, Front View

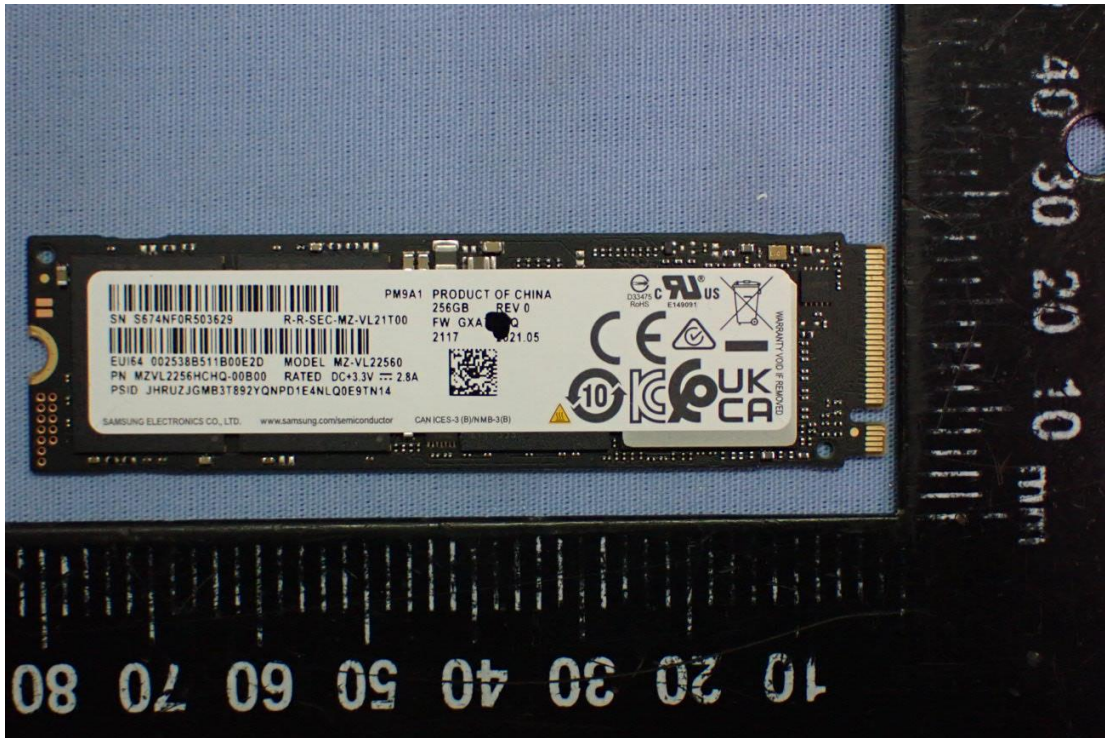


Figure 24
Worse 256GB SSD, Back View

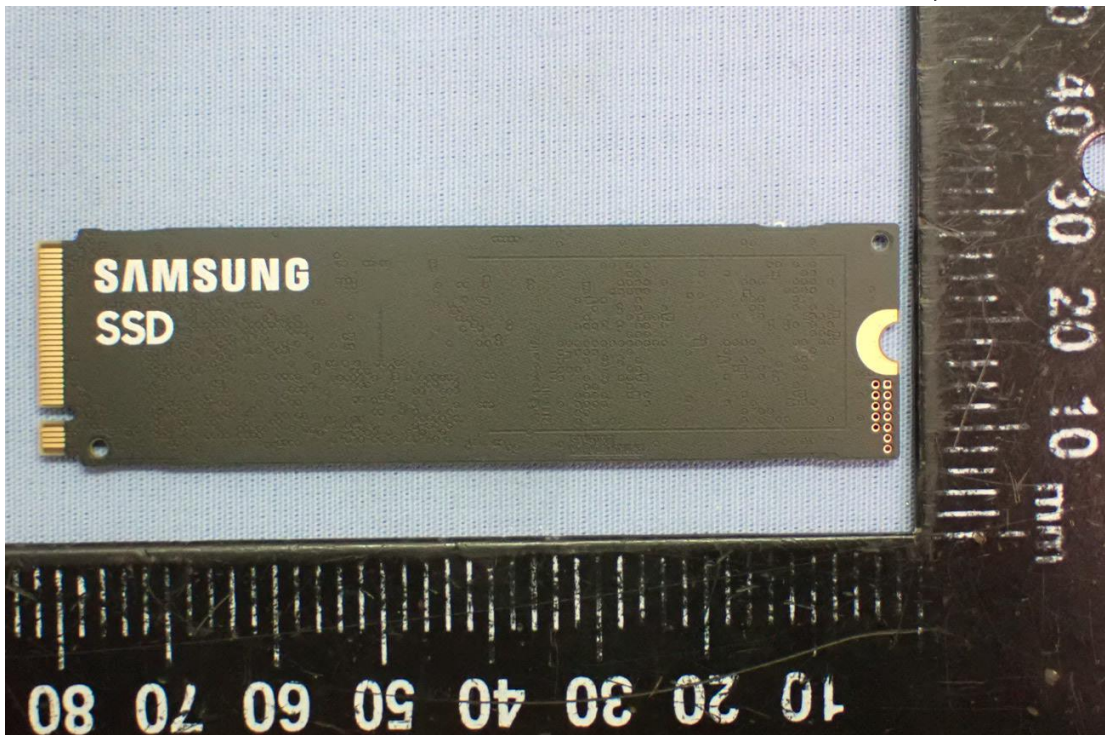


Figure 27
Battery Pack, Label View



Figure 28
Battery Pack, Label View



Figure 29
LP160WQ1(SP)(B2), LCD Panel, Front View



Figure 30
LP160WQ1(SP)(B2), LCD Panel, Back View

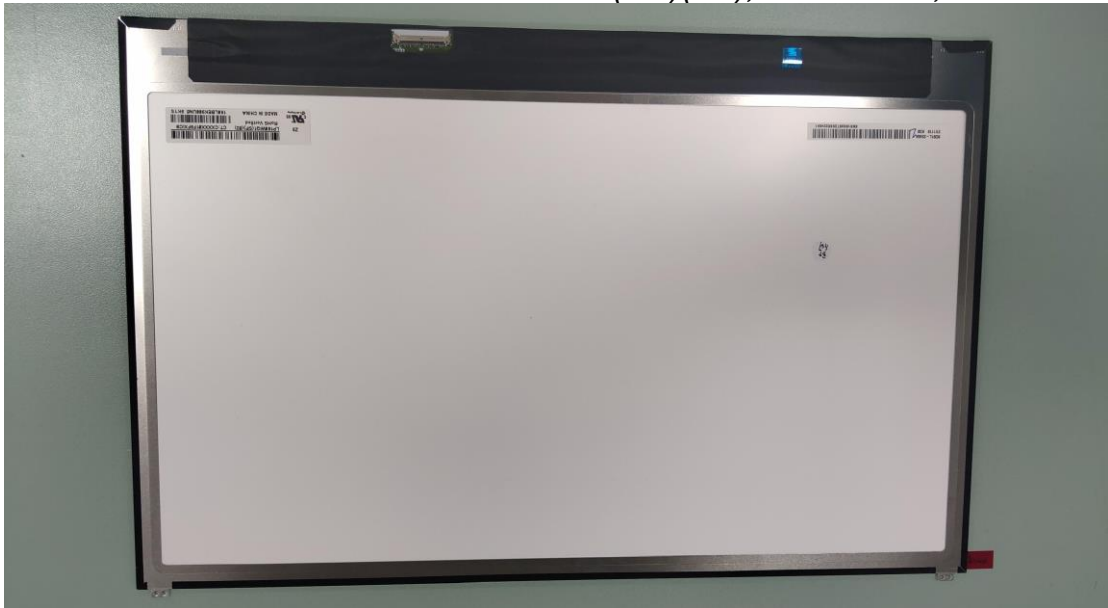


Figure 31
LP160WQ1(SP)(B2), LCD Panel, Label View



Figure 34
AC Adapter, AC Inlet View



Figure 35
AC Adapter, Label View



Figure 36
100 Megabit Ethernet, LAN Gender View (White), Front View

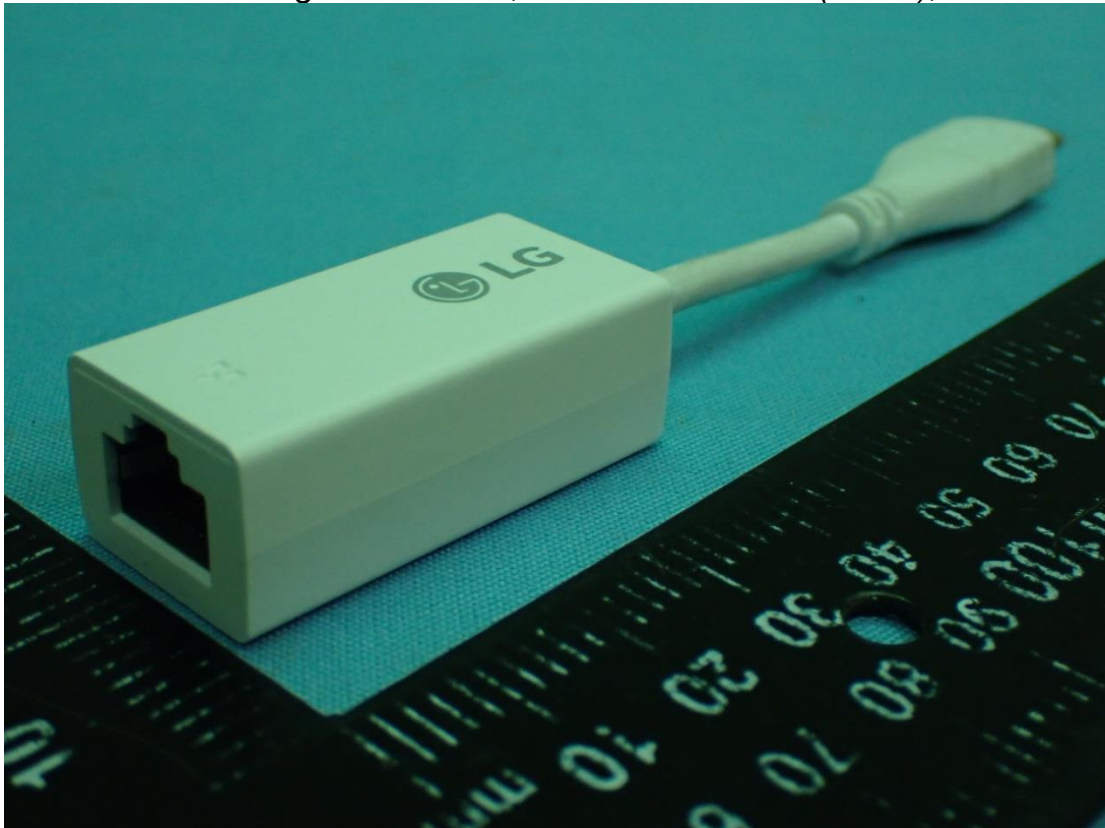


Figure 37
100 Megabit Ethernet, LAN Gender View (White), Front View

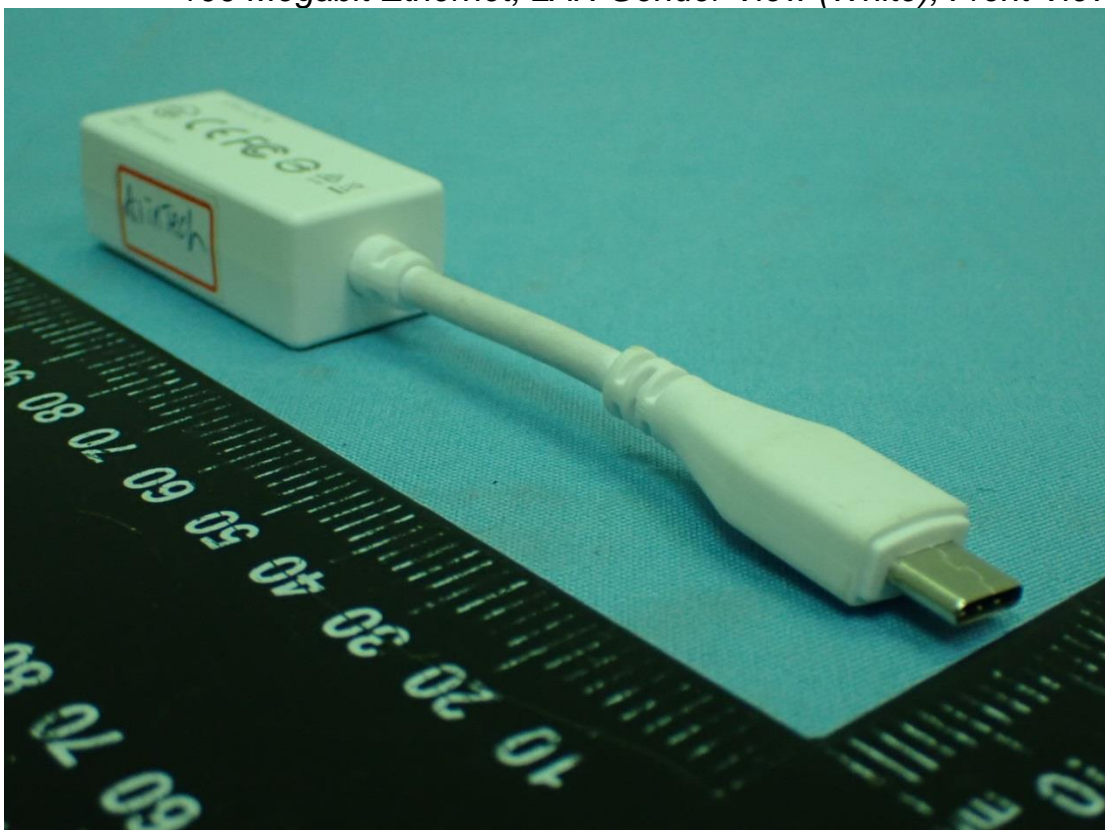


Figure 38
100 Megabit Ethernet, LAN Gender (Black), Front View

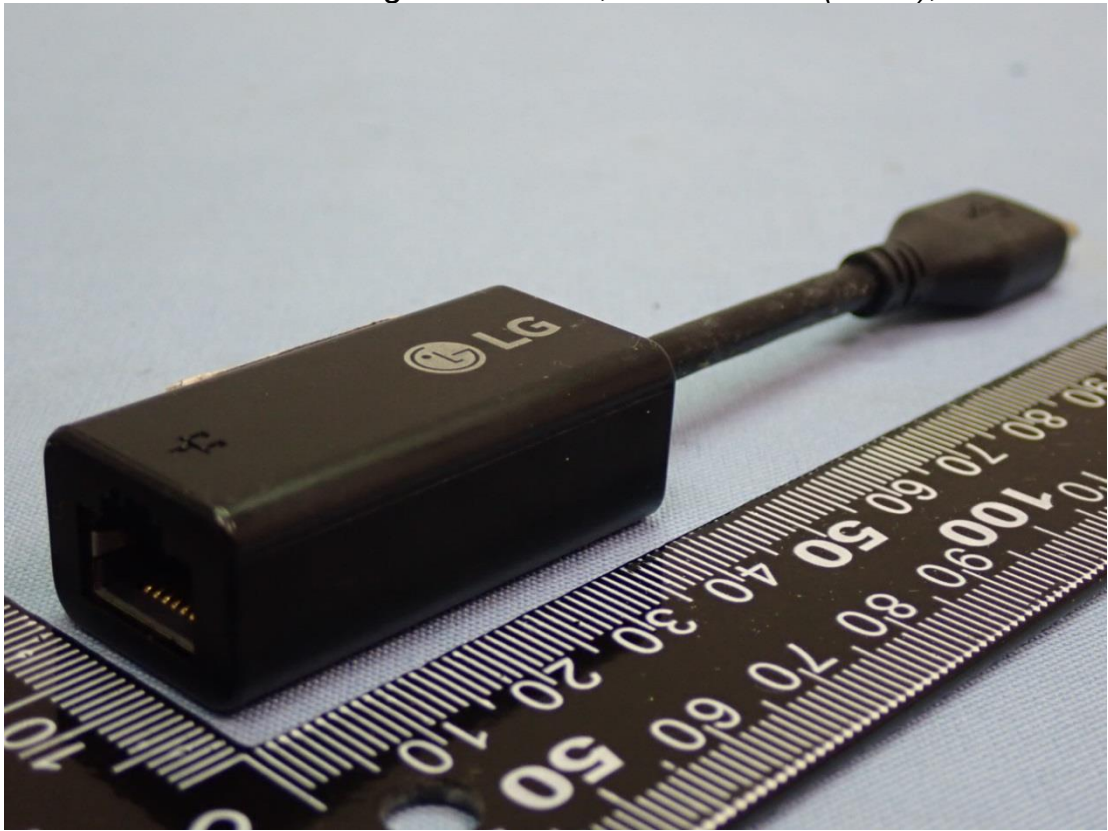


Figure 39
100 Megabit Ethernet, LAN Gender (Black), Back View

