

● **SAR Test Result**

Antenna: ANT 1 (AUX), Test Position: Screen

Measurement Report for 16ZB90Q, SCREEN, U-NII-5, UID 10755 AAC, Channel 15 (6025.0MHz)

Device under Test Properties

Model, Manufacturer	Dimensions [mm]	IMEI	DUT Type
16ZB90Q,	355.0 x 240.0 x 6.0		Laptop

Exposure Conditions

Phantom Section, TSL	Position, Test Distance [mm]	Band	Group, UID	Frequency [MHz], Channel Number	Conversion Factor	TSL Conductivity [S/m]	TSL Permittivity
Flat, HSL	SCREEN, 5.00	U-NII-5	WLAN, 10755-AAC	6025.0, 15	5.55	5.46	34.9

Hardware Setup

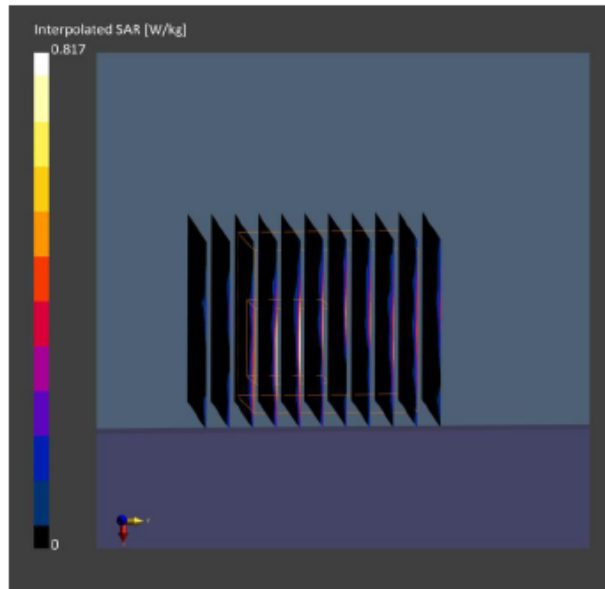
Phantom	TSL, Measured Date	Probe, Calibration Date	DAE, Calibration Date
ELI V5.0 (20deg probe tilt) - 1170	HBBL-600-10000	EX3DV4 - SN3855, 2021-09-24	DAE4 Sn1337, 2022-03-29

Scan Setup

	Area Scan	Zoom Scan
Grid Extents [mm]	85.0 x 153.0	22.0 x 22.0 x 22.0
Grid Steps [mm]	8.5 x 8.5	3.1 x 3.1 x 1.2
Sensor Surface [mm]	3.0	1.4
Graded Grid	Yes	Yes
Grading Ratio	1.5	1.2
MAIA	Y	Y
Surface Detection	VMS + 6p	VMS + 6p
Scan Method	Measured	Measured

Measurement Results

	Area Scan	Zoom Scan
Date	2022-07-09	2022-07-09
psSAR1g [W/kg]	0.121	0.146
psSAR10g [W/kg]	0.035	0.042
psAPD (1.0cm2, sq) [W/m2]		1.46
psAPD (4.0cm2, sq) [W/m2]		0.959
Power Drift [dB]	0.25	-0.18
Power Scaling	Disabled	Disabled
Scaling Factor [dB]		
TSL Correction	No correction	No correction
M2/M1 [%]		60.6
Dist 3dB Peak [mm]		3.3



Antenna: ANT 1 (AUX), Test Position: Bottom

Measurement Report for 16ZB90Q, BOTTOM, U-NII-5, UID 10755 AAC, Channel 15 (6025.0MHz)

Device under Test Properties

Model, Manufacturer	Dimensions [mm]	IMEI	DUT Type
16ZB90Q,	355.0 x 240.0 x 6.0		Laptop

Exposure Conditions

Phantom Section, TSL	Position, Test Distance [mm]	Band	Group, UID	Frequency [MHz], Channel Number	Conversion Factor	TSL Conductivity [S/m]	TSL Permittivity
Flat, HSL	BOTTOM, 0.00	U-NII-5	WLAN, 10755-AAC	6025.0, 15	5.55	5.46	34.9

Hardware Setup

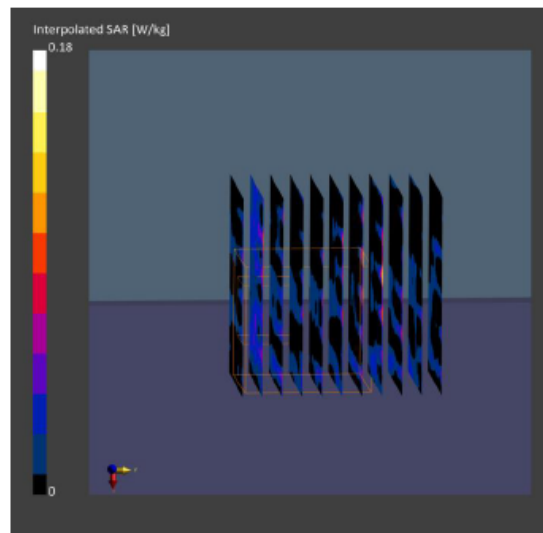
Phantom	TSL, Measured Date	Probe, Calibration Date	DAE, Calibration Date
ELI V5.0 (20deg probe tilt) - 1170	HBBL-600-10000	EX3DV4 - SN3855, 2021-09-24	DAE4 Sn1337, 2022-03-29

Scan Setup

	Area Scan	Zoom Scan
Grid Extents [mm]	85.0 x 204.0	22.0 x 22.0 x 22.0
Grid Steps [mm]	8.5 x 8.5	3.4 x 3.4 x 1.4
Sensor Surface [mm]	3.0	1.4
Graded Grid	Yes	Yes
Grading Ratio	1.5	1.4
MAIA	Y	Y
Surface Detection	VMS + 6p	VMS + 6p
Scan Method	Measured	Measured

Measurement Results

	Area Scan	Zoom Scan
Date	2022-07-09	2022-07-09
psSAR1g [W/kg]	0.024	0.023
psSAR10g [W/kg]	0.005	0.017
psAPD (1.0cm2, sq) [W/m2]		0.233
psAPD (4.0cm2, sq) [W/m2]		0.358
Power Drift [dB]	n/a	n/a
Power Scaling	Disabled	Disabled
Scaling Factor [dB]		
TSL Correction	No correction	No correction
M2/M1 [%]		87.9
Dist 3dB Peak [mm]		2.0



● **Power Density Test Result**

Antenna: ANT 1 (AUX)

Measurement Report for 16ZB90Q, FRONT, U-NII-5, UID 10755 AAC, Channel 15 (6025.0MHz)

Device under Test Properties

Model, Manufacturer	Dimensions [mm]	IMEI	DUT Type
16ZB90Q	355.0x 240.0 x 6.0		Laptop

Exposure Conditions

Phantom Section	Position, Test Distance [mm]	Band	Group, UID	Frequency [MHz], Channel Number	Conversion Factor
5GAir	Screen, 2.00	U-NII-5	WLAN, 10755-AAC	6025.0, 15	1.0

Hardware Setup

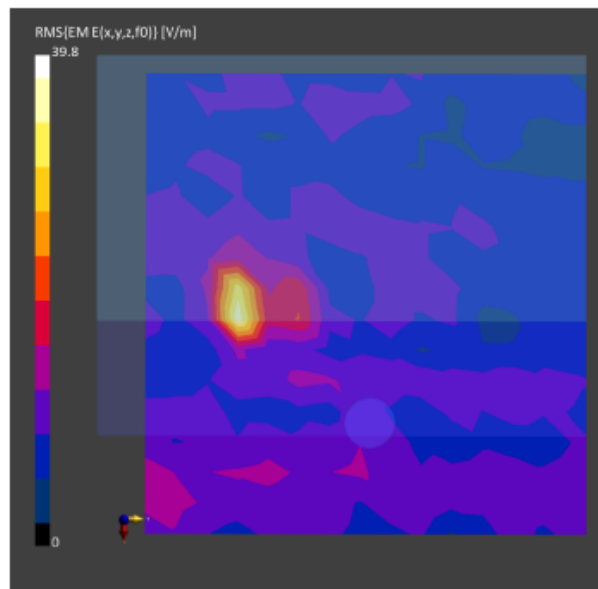
Phantom	Medium	Probe, Calibration Date	DAE, Calibration Date
mmWave- 1059	Air---	EUmmWV4 - SN9544_F1-55GHz, 2022-04-27	DAE4 Sn1337, 2022-03-29

Scan Setup

	5G Scan
Grid Extents [mm]	120.0x 120.0
Grid Steps [lambda]	0.25x 0.25
Sensor Surface [mm]	2.0
MAIA	N/A

Measurement Results

	5G Scan
Date	2022-07-14
Avg. Area [cm ²]	4.00
psPDn+ [W/m ²]	0.693
psPDtot+ [W/m ²]	0.862
psPDmod+ [W/m ²]	1.17
E _{max} [V/m]	39.8
Power Drift [dB]	-4.21



Measurement Report for 16ZB90Q, FRONT, U-NII-5, UID 10755 AAC, Channel 47 (6185.0MHz)

Device under Test Properties

Model, Manufacturer	Dimensions [mm]	IMEI	DUT Type
16ZB90Q	355.0 x 240.0 x 6.0		Laptop

Exposure Conditions

Phantom Section	Position, Test Distance [mm]	Band	Group, UID	Frequency [MHz], Channel Number	Conversion Factor
5G Air	Screen, 2.00	U-NII-5	WLAN, 10755-AAC	6185.0, 47	1.0

Hardware Setup

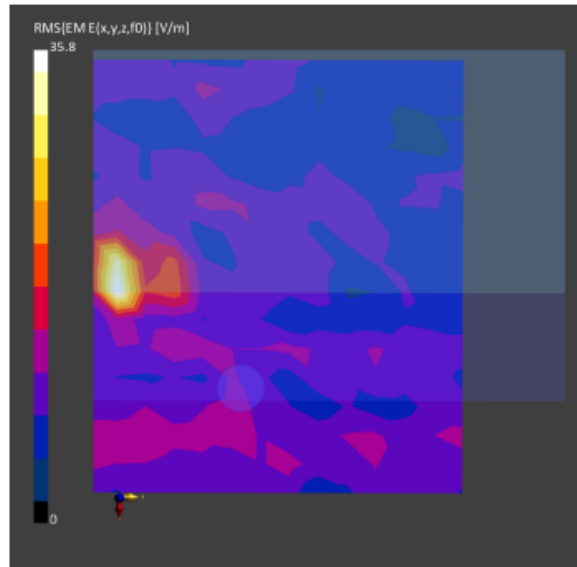
Phantom	Medium	Probe, Calibration Date	DAE, Calibration Date
mmWave- 1059	Air---	EUmmWV4 - SN9544_F1-55GHz, 2022-04-27	DAE4 Sn1337, 2022-03-29

Scan Setup

	5G Scan
Grid Extents [mm]	120.0 x 120.0
Grid Steps [lambda]	0.25 x 0.25
Sensor Surface [mm]	2.0
MAIA	N/A

Measurement Results

	5G Scan
Date	2022-07-14
Avg. Area [cm ²]	4.00
psPDn+ [W/m ²]	0.647
psPDtot+ [W/m ²]	0.818
psPDmod+ [W/m ²]	1.09
E _{max} [V/m]	35.8
Power Drift [dB]	-4.88



Measurement Report for 16ZB90Q, FRONT, U-NII-6, UID 10755 AAC, Channel 111 (6505.0MHz)

Device under Test Properties

Model, Manufacturer	Dimensions [mm]	IMEI	DUT Type
16ZB90Q	355.0 x 240.0 x 6.0		Laptop

Exposure Conditions

Phantom Section	Position, Test Distance [mm]	Band	Group, UID	Frequency [MHz], Channel Number	Conversion Factor
5G Air	Screen, 2.00	U-NII-6	WLAN, 10755-AAC	6505.0, 111	1.0

Hardware Setup

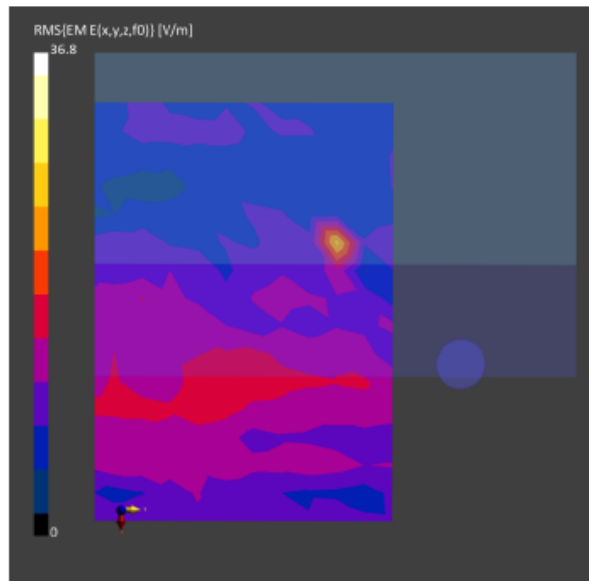
Phantom	Medium	Probe, Calibration Date	DAE, Calibration Date
mmWave- 1059	Air---	EUmmWV4 - SN9544_F1-55GHz, 2022-04-27	DAE4 Sn1337, 2022-03-29

Scan Setup

	5G Scan
Grid Extents [mm]	120.0 x 120.0
Grid Steps [lambda]	0.25 x 0.25
Sensor Surface [mm]	2.0
MAIA	N/A

Measurement Results

	5G Scan
Date	2022-07-14
Avg. Area [cm ²]	4.00
psPDn+ [W/m ²]	0.394
psPDtot+ [W/m ²]	0.584
psPDmod+ [W/m ²]	0.658
E _{max} [V/m]	36.8
Power Drift [dB]	n/a



Measurement Report for 16ZB90Q, FRONT, U-NII-7, UID 10755 AAC, Channel 143 (6665.0MHz)

Device under Test Properties

Model, Manufacturer	Dimensions [mm]	IMEI	DUT Type
16ZB90Q	355.0 x 240.0 x 6.0		Laptop

Exposure Conditions

Phantom Section	Position, Test Distance [mm]	Band	Group, UID	Frequency [MHz], Channel Number	Conversion Factor
5G Air	Screen, 2.00	U-NII-7	WLAN, 10755-AAC	6665.0, 143	1.0

Hardware Setup

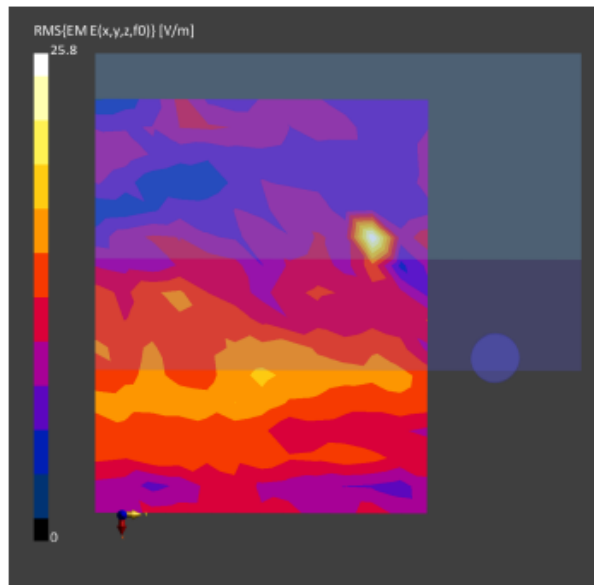
Phantom	Medium	Probe, Calibration Date	DAE, Calibration Date
mmWave- 1059	Air	EUmmWV4 - SN9544_F1-55GHz, 2022-04-27	DAE4 Sn1337, 2022-03-29

Scan Setup

	5G Scan
Grid Extents [mm]	120.0 x 120.0
Grid Steps [lambda]	0.25 x 0.25
Sensor Surface [mm]	2.0
MAIA	N/A

Measurement Results

	5G Scan
Date	2022-07-14
Avg. Area [cm ²]	4.00
psPDn+ [W/m ²]	0.348
psPDtot+ [W/m ²]	0.470
psPDmod+ [W/m ²]	0.572
E _{max} [V/m]	25.8
Power Drift [dB]	n/a



Measurement Report for 16ZB90Q, FRONT, U-NII-8, UID 10755 AAC, Channel 207 (6985.0MHz)

Device under Test Properties

Model, Manufacturer	Dimensions [mm]	IMEI	DUT Type
16ZB90Q	355.0 x 240.0 x 6.0		Laptop

Exposure Conditions

Phantom Section	Position, Test Distance [mm]	Band	Group, UID	Frequency [MHz], Channel Number	Conversion Factor
5G Air	Screen, 2.00	U-NII-8	WLAN, 10755-AAC	6985.0, 207	1.0

Hardware Setup

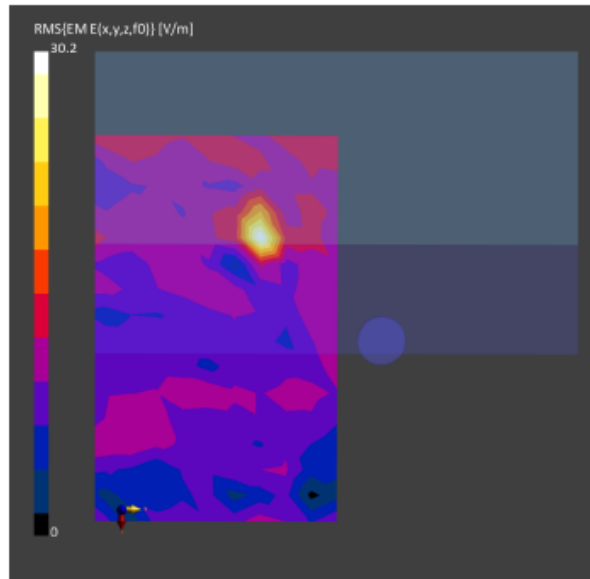
Phantom	Medium	Probe, Calibration Date	DAE, Calibration Date
mmWave- 1059	Air---	EUmmWV4 - SN9544_F1-55GHz, 2022-04-27	DAE4 Sn1337, 2022-03-29

Scan Setup

	5G Scan
Grid Extents [mm]	120.0 x 120.0
Grid Steps [lambda]	0.25 x 0.25
Sensor Surface [mm]	2.0
MAIA	N/A

Measurement Results

	5G Scan
Date	2022-07-14
Avg. Area [cm ²]	4.00
psPDn+ [W/m ²]	0.557
psPDtot+ [W/m ²]	0.613
psPDmod+ [W/m ²]	0.706
E _{max} [V/m]	30.2
Power Drift [dB]	-0.70



Antenna: ANT 2 (Main)

Measurement Report for 16ZB90Q, FRONT, U-NII-5, UID 10755 AAC, Channel 15 (6025.0MHz)

Device under Test Properties

Model, Manufacturer	Dimensions [mm]	IMEI	DUT Type
16ZB90Q	355.0 x 240.0 x 6.0		Laptop

Exposure Conditions

Phantom Section	Position, Test Distance [mm]	Band	Group, UID	Frequency [MHz], Channel Number	Conversion Factor
5GAir	Screen, 2.00	U-NII-5	WLAN, 10755-AAC	6025.0, 15	1.0

Hardware Setup

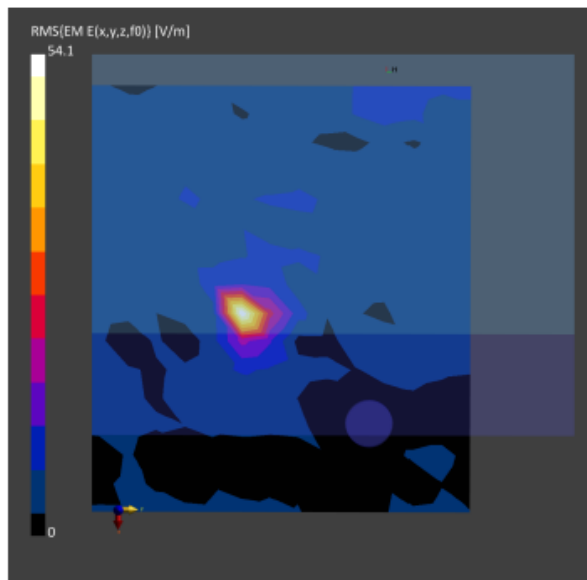
Phantom	Medium	Probe, Calibration Date	DAE, Calibration Date
mmWave- 1059	Air---	EUmmWV4- SN9544_F1-55GHz, 2022-04-27	DAE4 Sn1337, 2022-03-29

Scan Setup

	5G Scan
Grid Extents [mm]	120.0x 120.0
Grid Steps [lambda]	0.25x 0.25
Sensor Surface [mm]	2.0
MAIA	N/A

Measurement Results

	5G Scan
Date	2022-07-14
Avg. Area [cm ²]	4.00
psPDn+ [W/m ²]	0.69
psPDtot+ [W/m ²]	1.07
psPDmod+ [W/m ²]	2.42
E _{max} [V/m]	54.1
Power Drift [dB]	-0.12



Measurement Report for 16ZB90Q, FRONT, U-NII-5, UID 10755 AAC, Channel 47 (6185.0MHz)

Device under Test Properties

Model, Manufacturer	Dimensions [mm]	IMEI	DUT Type
16ZB90Q	355.0 x 240.0 x 6.0		Laptop

Exposure Conditions

Phantom Section	Position, Test Distance [mm]	Band	Group, UID	Frequency [MHz], Channel Number	Conversion Factor
5G Air	Screen, 2.00	U-NII-5	WLAN, 10755-AAC	6185.0, 47	1.0

Hardware Setup

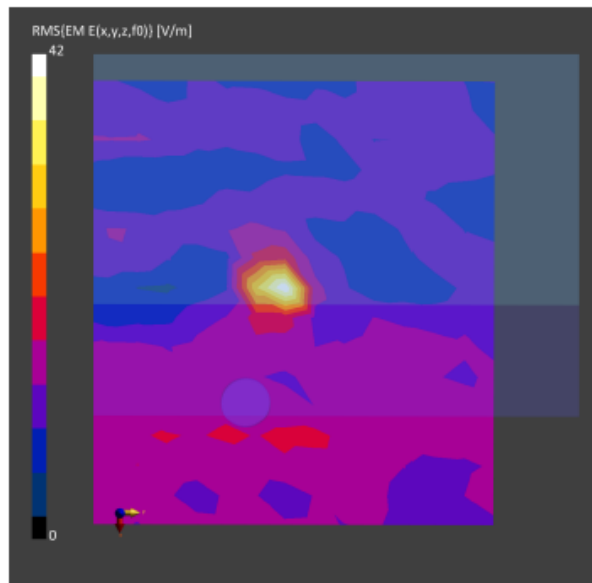
Phantom	Medium	Probe, Calibration Date	DAE, Calibration Date
mmWave- 1059	Air---	EUmmWV4 - SN9544_F1-55GHz, 2022-04-27	DAE4 Sn1337, 2022-03-29

Scan Setup

	5G Scan
Grid Extents [mm]	120.0 x 120.0
Grid Steps [lambda]	0.25 x 0.25
Sensor Surface [mm]	2.0
MAIA	N/A

Measurement Results

	5G Scan
Date	2022-07-14
Avg. Area [cm ²]	4.00
psPDn+ [W/m ²]	0.715
psPDtot+ [W/m ²]	1.01
psPDmod+ [W/m ²]	1.28
E _{max} [V/m]	42.0
Power Drift [dB]	0.06



Measurement Report for 16ZB90Q, FRONT, U-NII-6, UID 10755 AAC, Channel 111 (6505.0MHz)

Device under Test Properties

Model, Manufacturer	Dimensions [mm]	IMEI	DUT Type
16ZB90Q	355.0 x 240.0 x 6.0		Laptop

Exposure Conditions

Phantom Section	Position, Test Distance [mm]	Band	Group, UID	Frequency [MHz], Channel Number	Conversion Factor
5G Air	Screen, 2.00	U-NII-6	WLAN, 10755-AAC	6505.0, 111	1.0

Hardware Setup

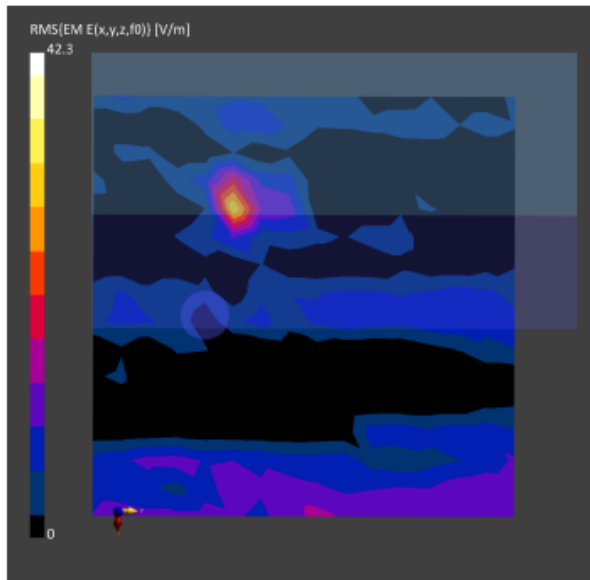
Phantom	Medium	Probe, Calibration Date	DAE, Calibration Date
mmWave- 1059	Air---	EUmmWV4 - SN9544_F1-55GHz, 2022-04-27	DAE4 Sn1337, 2022-03-29

Scan Setup

	5G Scan
Grid Extents [mm]	120.0 x 120.0
Grid Steps [lambda]	0.25 x 0.25
Sensor Surface [mm]	2.0
MAIA	N/A

Measurement Results

	5G Scan
Date	2022-07-14
Avg. Area [cm ²]	4.00
psPDn+ [W/m ²]	0.566
psPDtot+ [W/m ²]	0.714
psPDmod+ [W/m ²]	0.765
E _{max} [V/m]	42.3
Power Drift [dB]	8.41



Measurement Report for 16ZB90Q, FRONT, U-NII-7, UID 10755 AAC, Channel 143 (6665.0MHz)

Device under Test Properties

Model, Manufacturer	Dimensions [mm]	IMEI	DUT Type
16ZB90Q	355.0 x 240.0 x 6.0		Laptop

Exposure Conditions

Phantom Section	Position, Test Distance [mm]	Band	Group, UID	Frequency [MHz], Channel Number	Conversion Factor
5G Air	Screen, 2.00	U-NII-7	WLAN, 10755-AAC	6665.0, 143	1.0

Hardware Setup

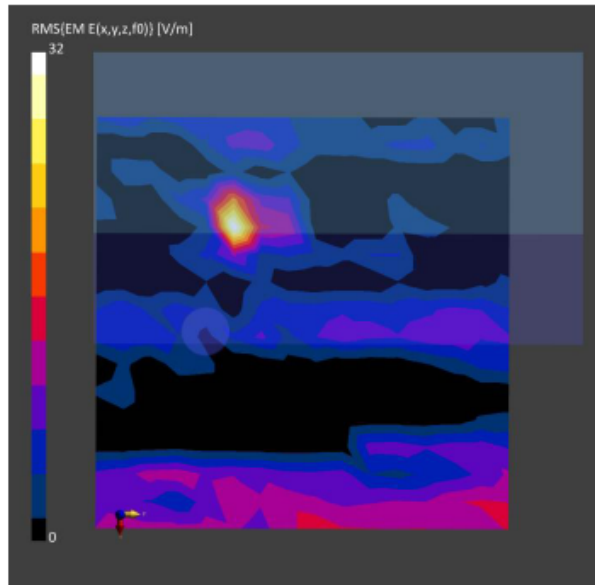
Phantom	Medium	Probe, Calibration Date	DAE, Calibration Date
mmWave- 1059	Air---	EUmmWV4 - SN9544_F1-55GHz, 2022-04-27	DAE4 Sn1337, 2022-03-29

Scan Setup

	5G Scan
Grid Extents [mm]	120.0 x 120.0
Grid Steps [lambda]	0.25 x 0.25
Sensor Surface [mm]	2.0
MAIA	N/A

Measurement Results

	5G Scan
Date	2022-07-14
Avg. Area [cm ²]	4.00
psPDn+ [W/m ²]	0.566
psPDtot+ [W/m ²]	0.625
psPDmod+ [W/m ²]	0.709
E _{max} [V/m]	32.0
Power Drift [dB]	9.43



Audix Technology Corp.
 No. 491, Zhongfu Rd., Linkou Dist.,
 New Taipei City 244, Taiwan

Tel: +886 2 26099301
Fax: +886 2 26099303

Measurement Report for 16ZB90Q, FRONT, U-NII-8, UID 10755 AAC, Channel 207 (6985.0MHz)

Device under Test Properties

Model, Manufacturer	Dimensions [mm]	IMEI	DUT Type
16ZB90Q	355.0 x 240.0 x 6.0		Laptop

Exposure Conditions

Phantom Section	Position, Test Distance [mm]	Band	Group, UID	Frequency [MHz], Channel Number	Conversion Factor
5G Air	Screen, 2.00	U-NII-8	WLAN, 10755-AAC	6985.0, 207	1.0

Hardware Setup

Phantom	Medium	Probe, Calibration Date	DAE, Calibration Date
mmWave- 1059	Air---	EUmmWV4 - SN9544_F1-55GHz, 2022-04-27	DAE4 Sn1337, 2022-03-29

Scan Setup

	5G Scan
Grid Extents [mm]	120.0 x 120.0
Grid Steps [lambda]	0.25 x 0.25
Sensor Surface [mm]	2.0
MAIA	N/A

Measurement Results

	5G Scan
Date	2022-07-14
Avg. Area [cm ²]	4.00
psPDn+ [W/m ²]	0.434
psPDtot+ [W/m ²]	0.511
psPDmod+ [W/m ²]	0.684
E _{max} [V/m]	22.3
Power Drift [dB]	-0.14

