

EUT Internal Photos

Figure 13
Internal View (With White Keyboard)



Figure 14
Internal View (With Black Keyboard)



Figure 15
Internal View

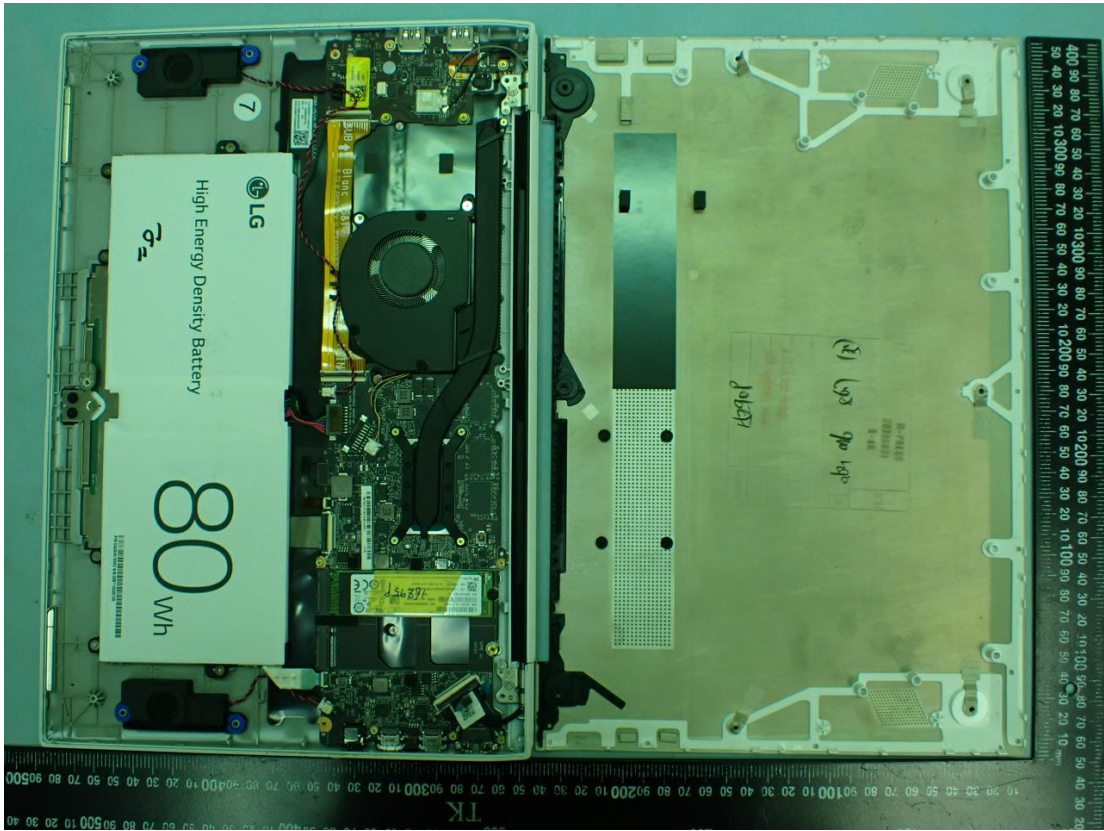


Figure 16
Internal View (Touch Pad, Back View)

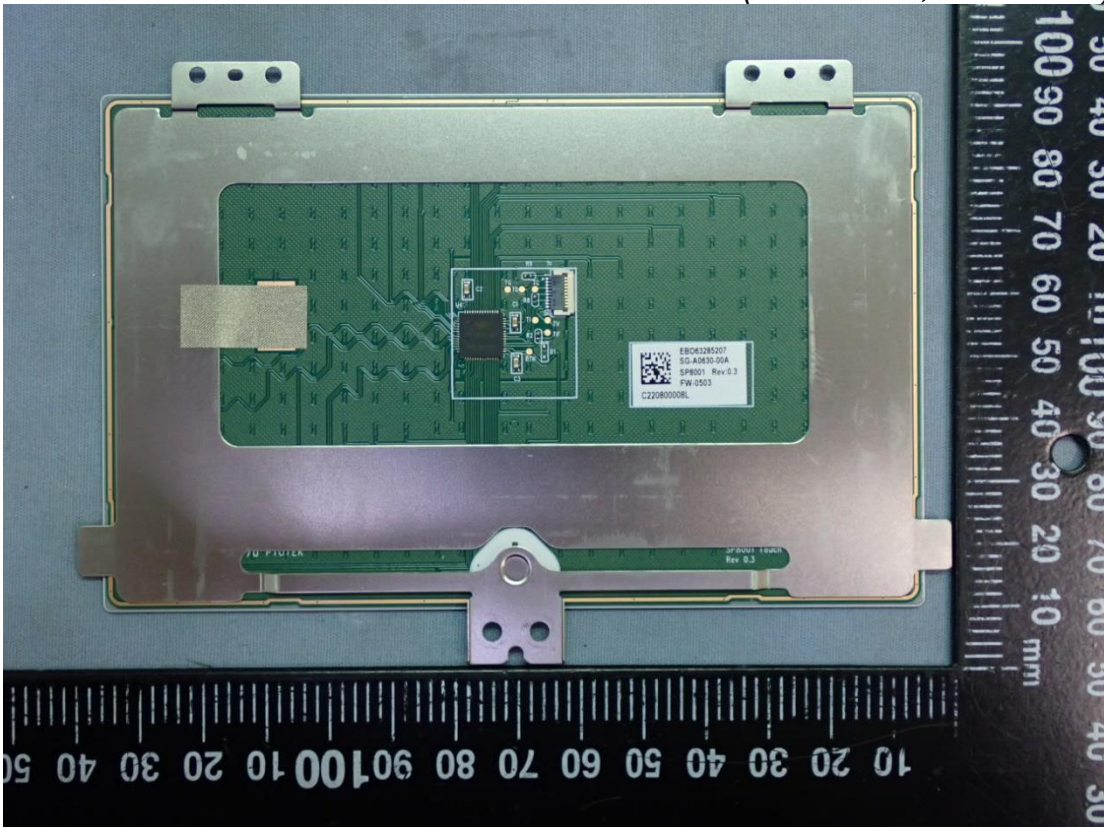


Figure 17
Internal View (Touch Pad, Front View)

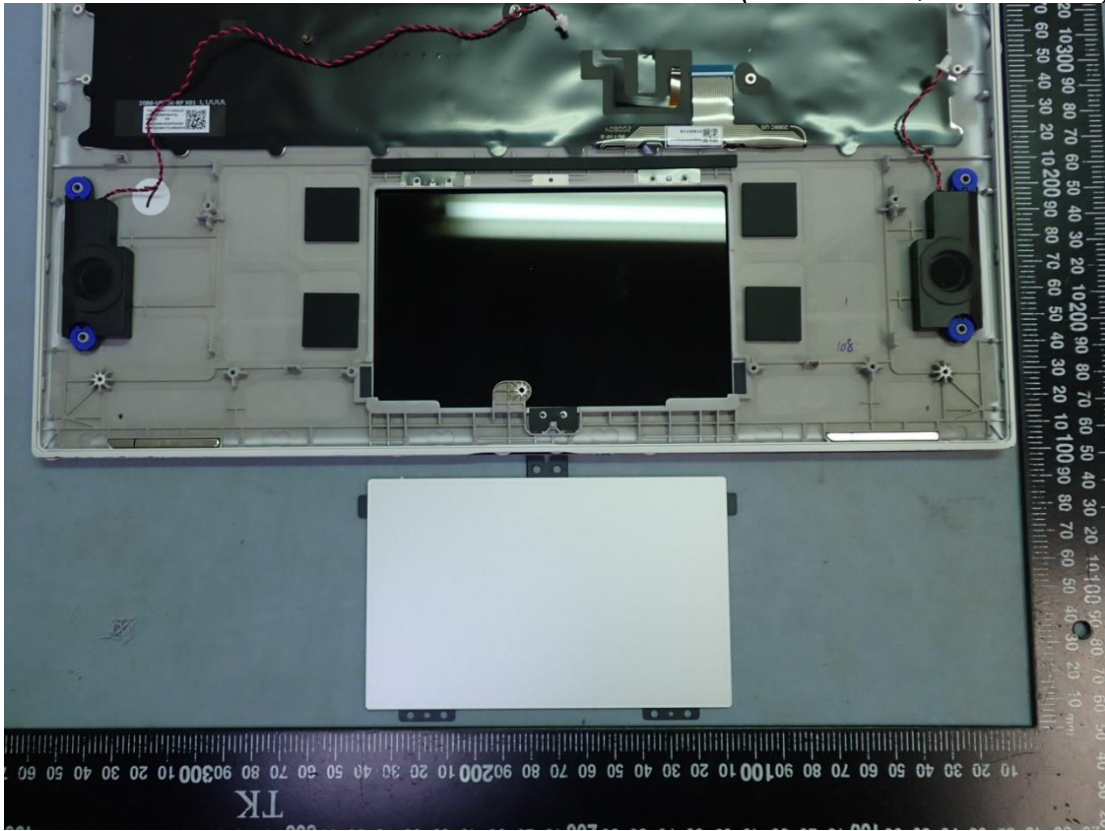


Figure 18
Hannstar, Main Board, Front View

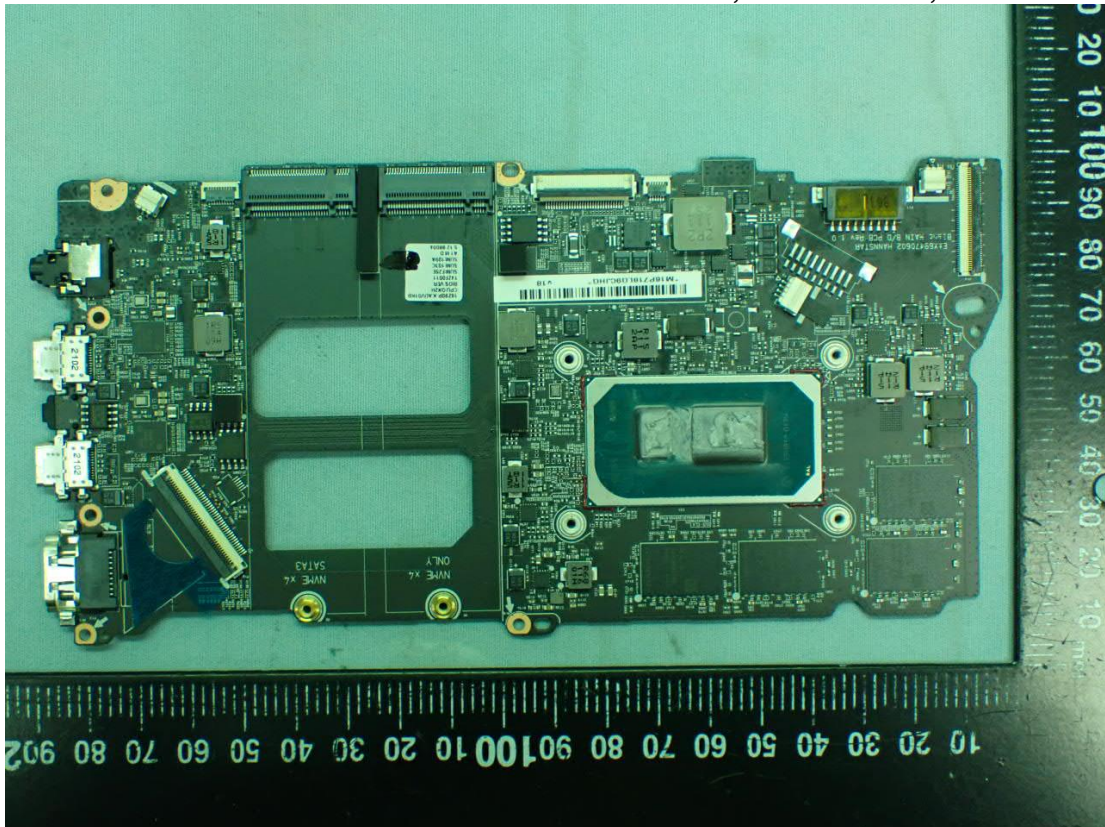


Figure 19
Hannstar, Main Board, Back View

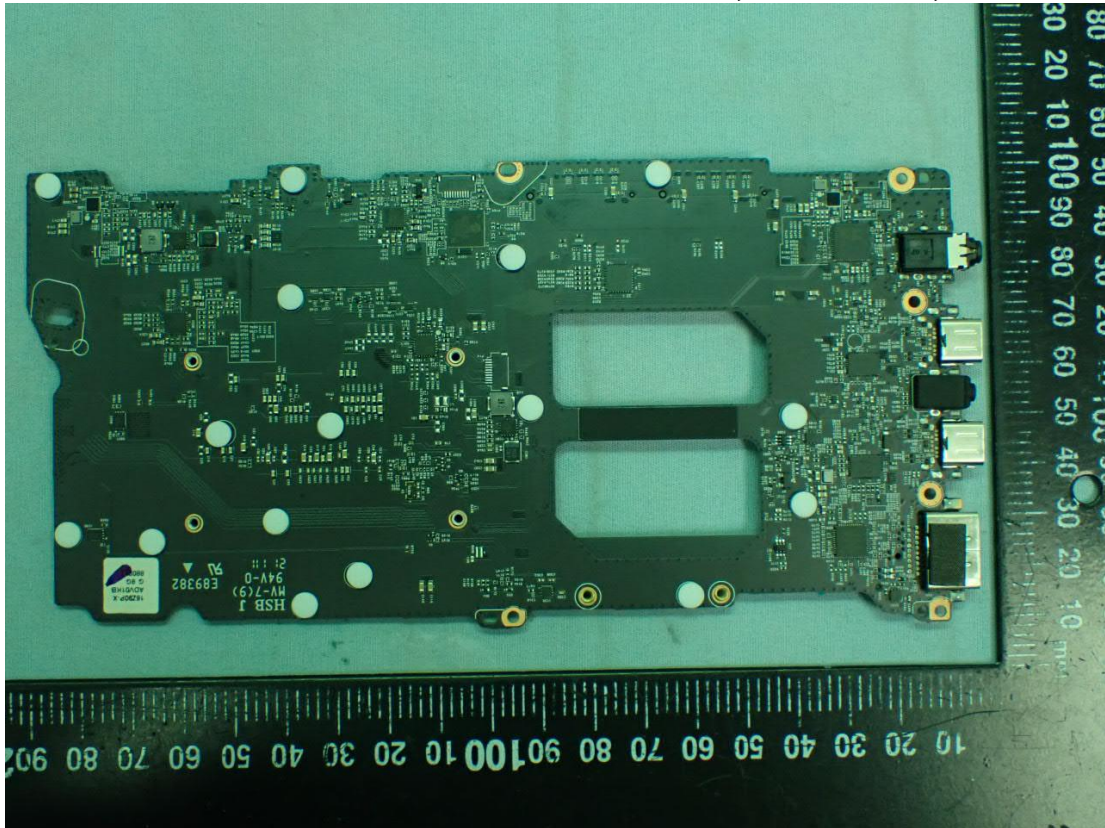


Figure 20
CPU View



Figure 21
WLAN SUB Board, Front View

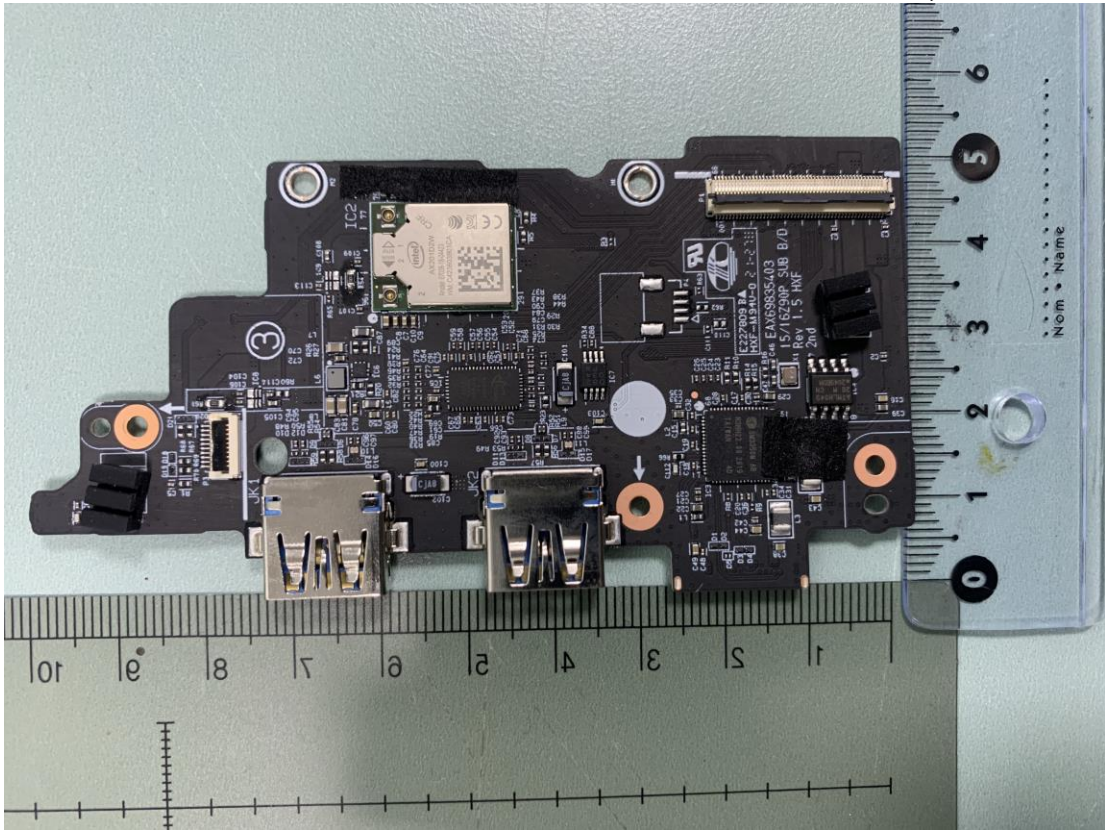


Figure 22
WLAN SUB Board, Back View

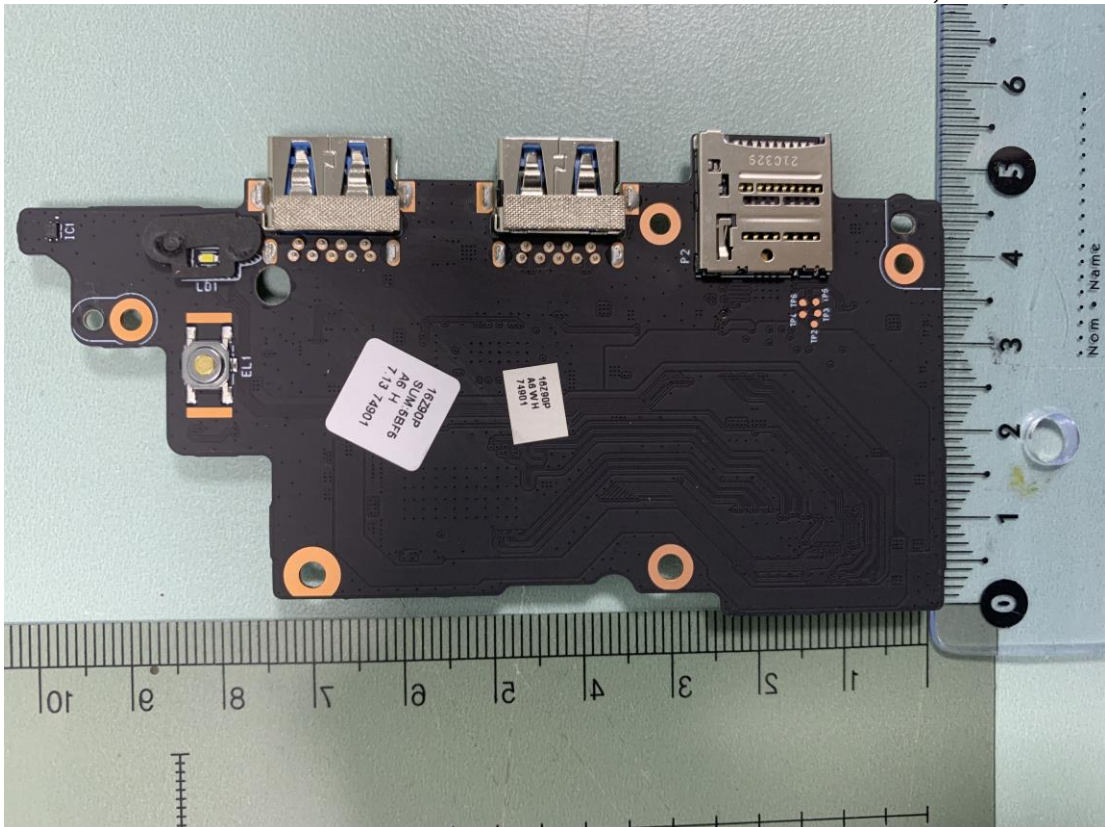


Figure 23
WLAN Combo Card View



Figure 24
WLAN Combo Card, Remove Cover

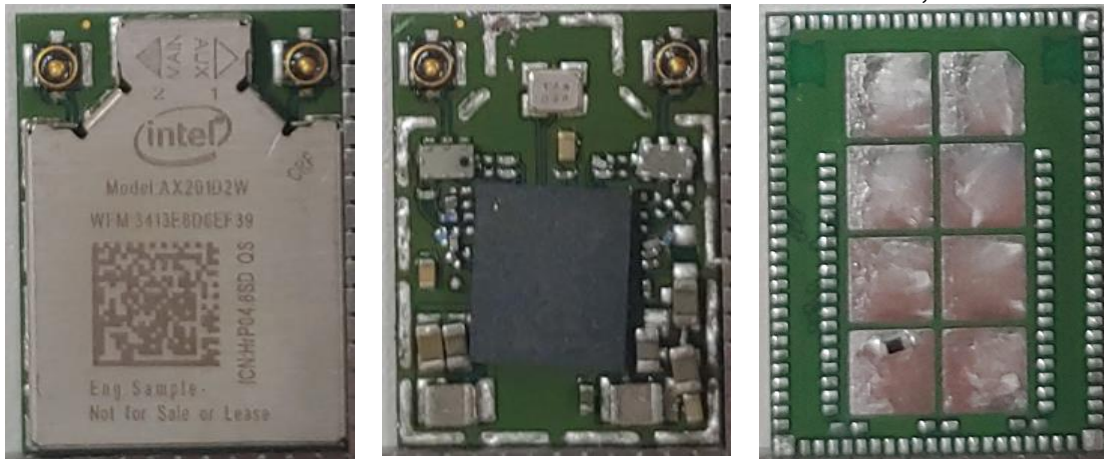


Figure 25
Internal View (DC Fan)

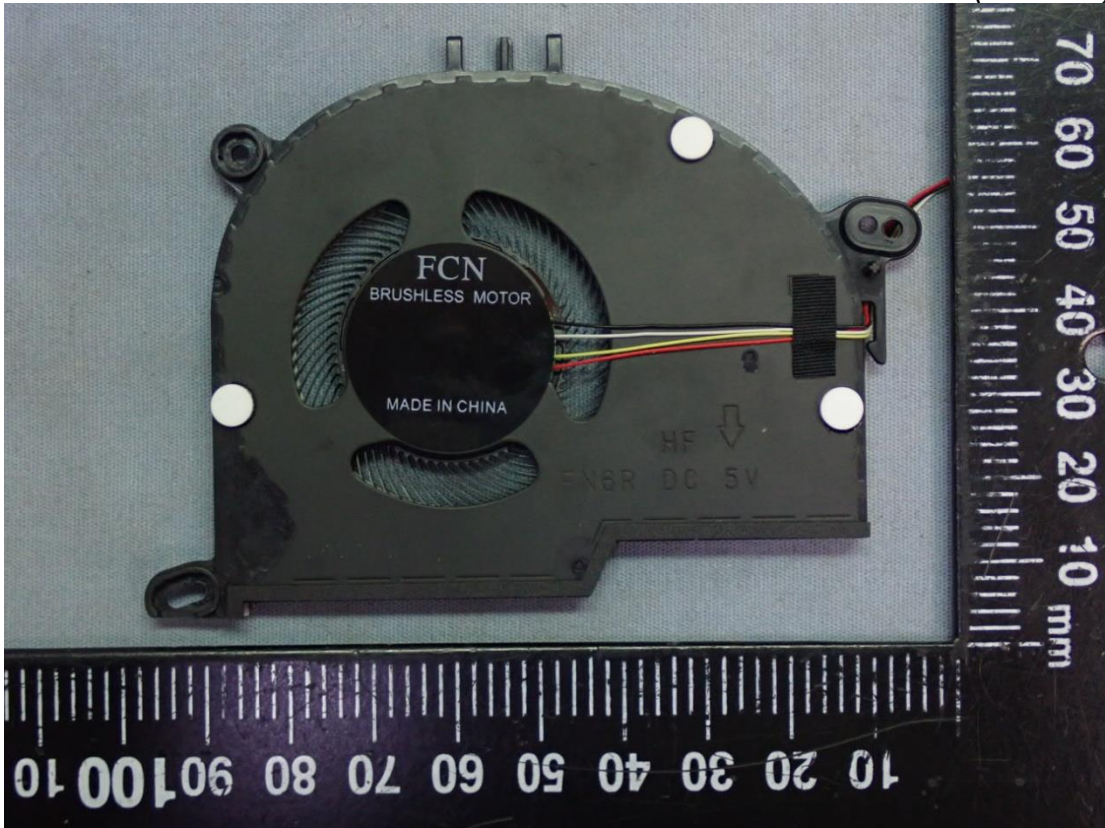


Figure 26
M/N: LP160WQ1(SP)(A1) (With Non Touch), LCD Panel, Front View

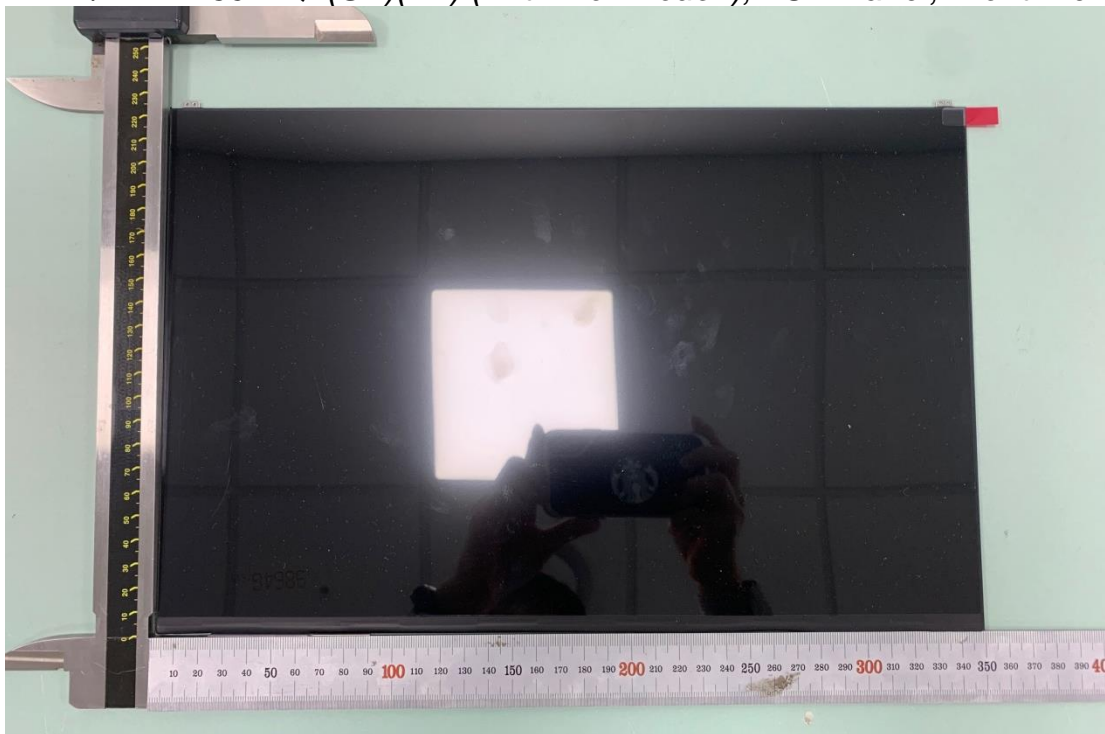


Figure 27

M/N: LP160WQ1(SP)(A1) (With Non Touch), LCD Panel, Back View/ Label View



Figure 28

M/N WA-P-LELE-04-002, WLAN Combo Antenna



Figure 29
M/N WA-P-LELE-04-002, WLAN Combo Antenna Position

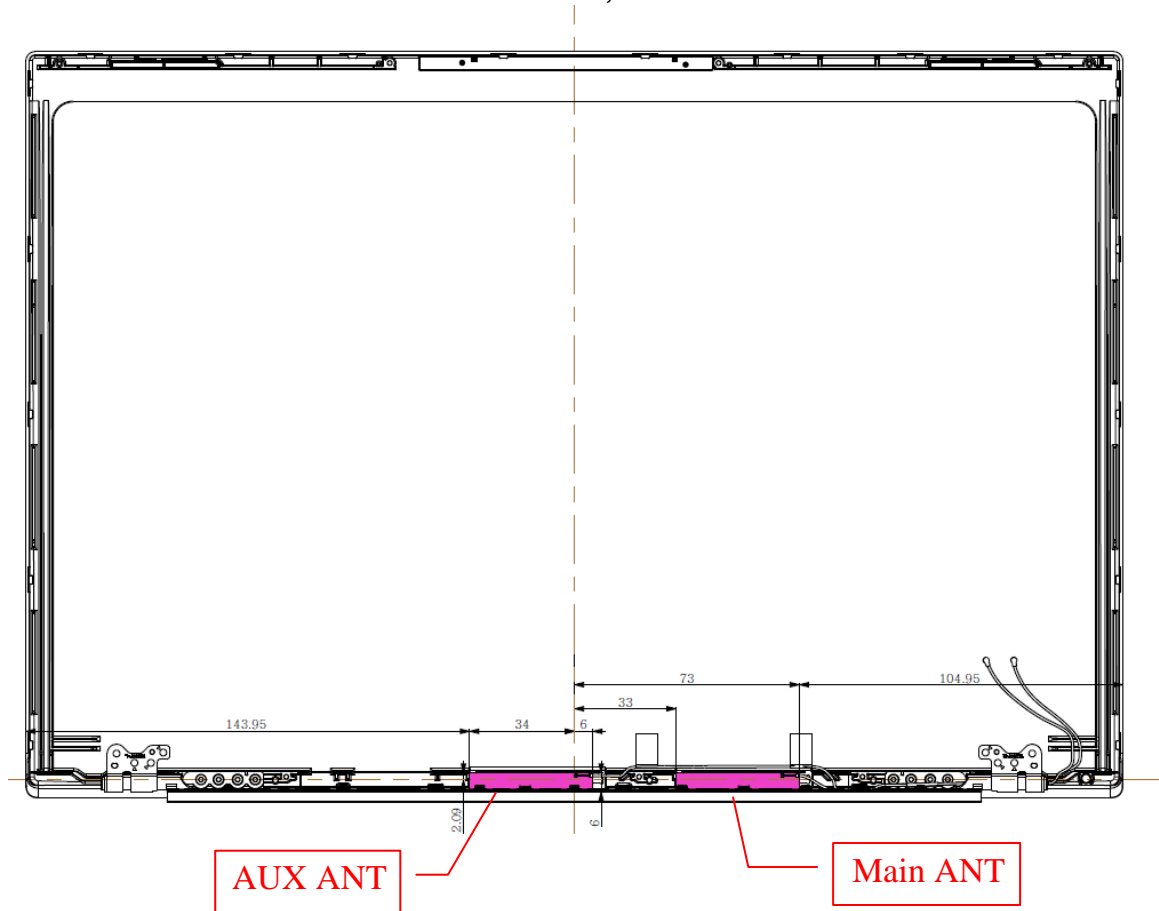


Figure 30
M/N L1LRF004-CS-H, WLAN Combo Antenna

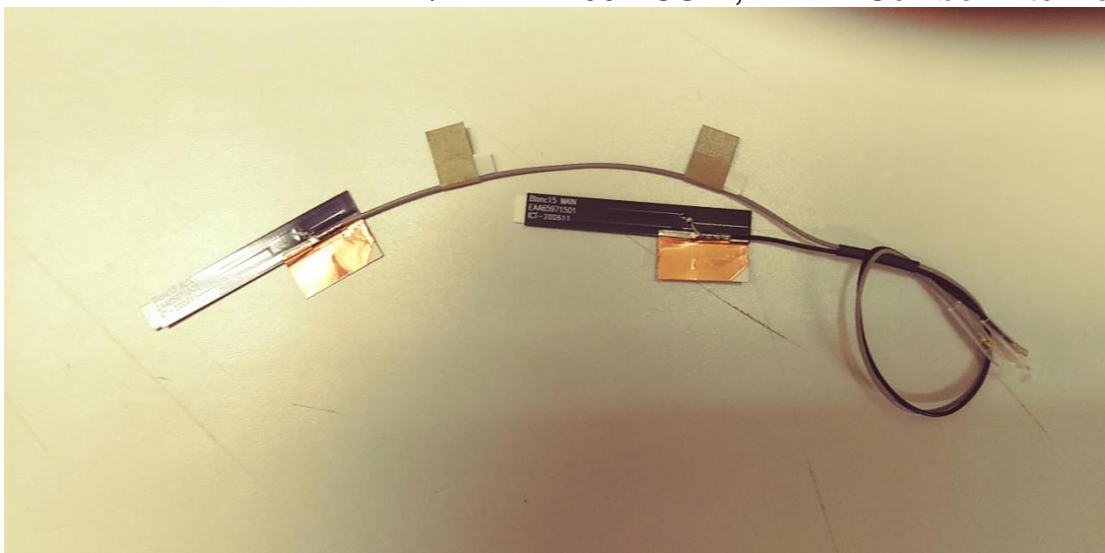


Figure 31
M/N L1LRF004-CS-H, WLAN Combo Antenna Position

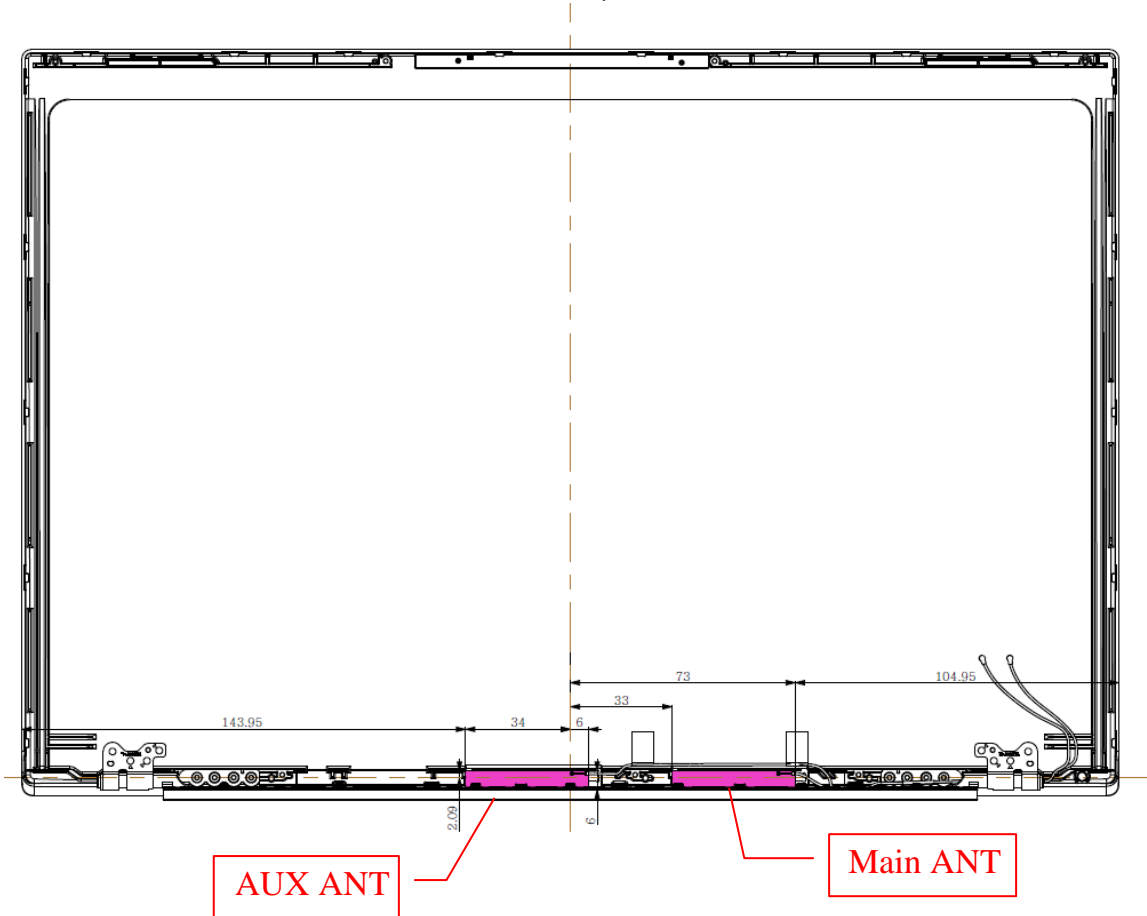


Figure 32
Battery Pack, Front View

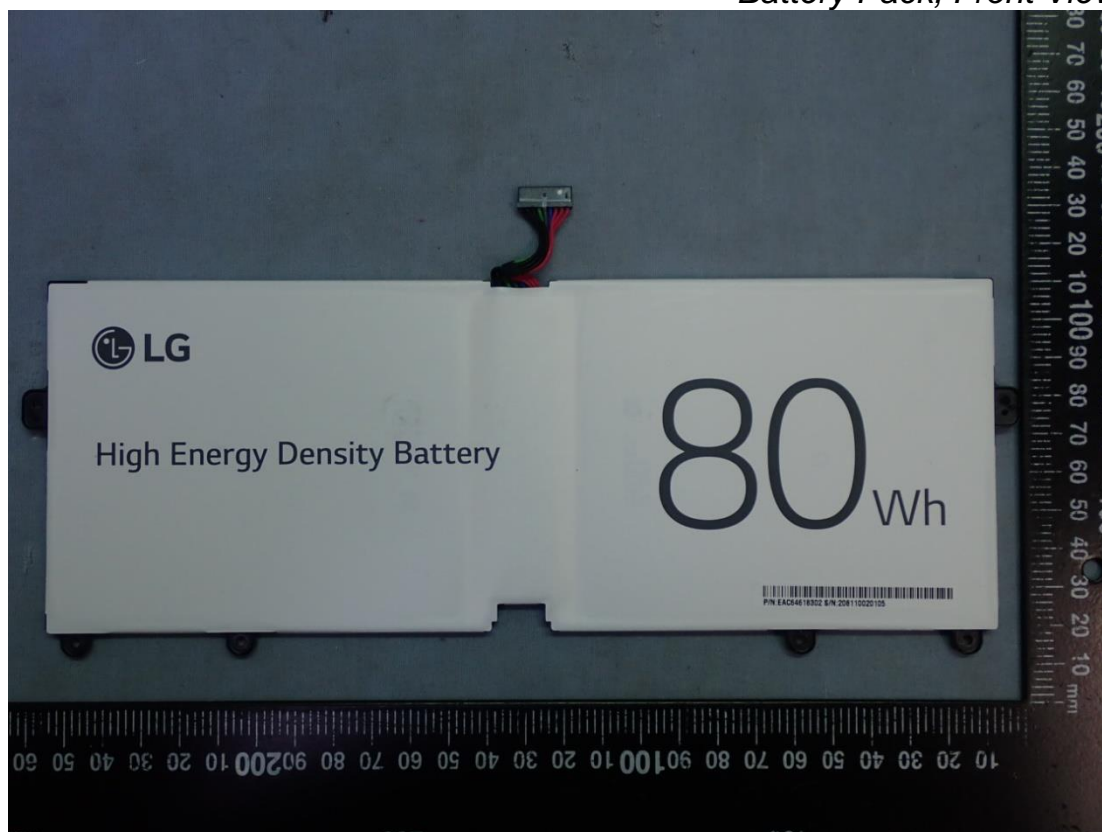


Figure 33
Battery Pack, Back View

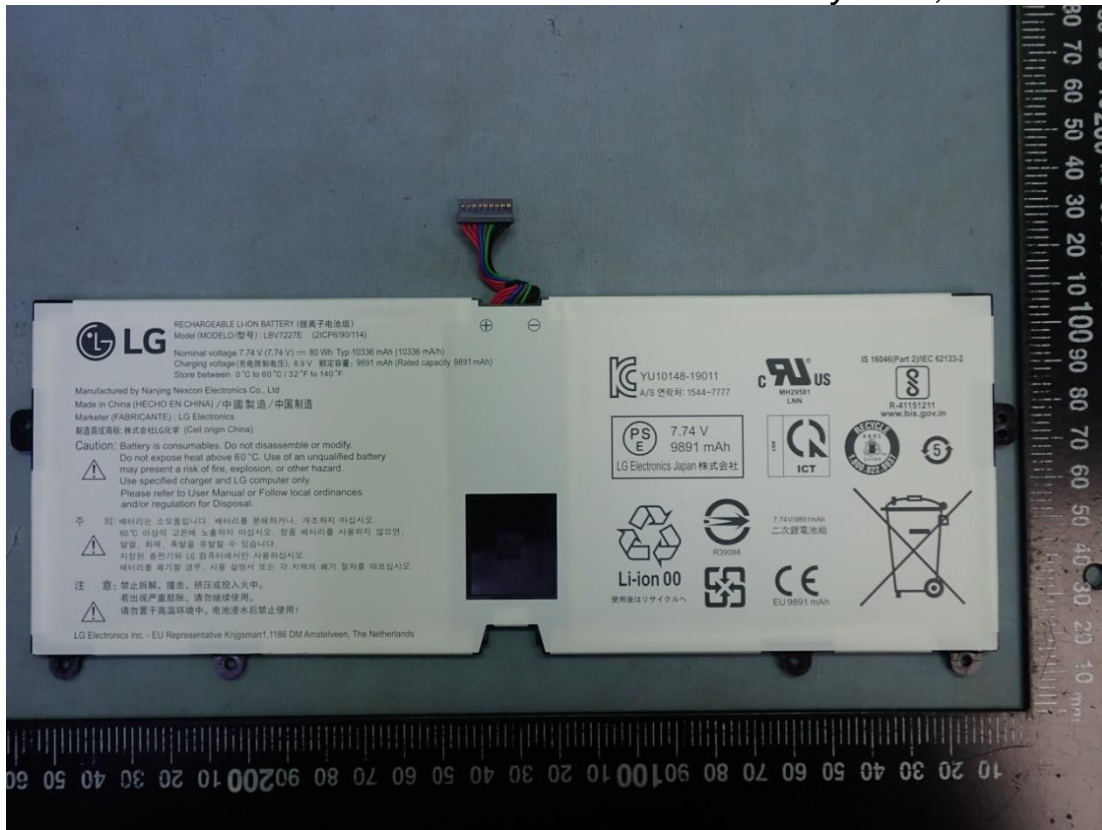


Figure 34
SK hynix, SSD (256GB), Front View

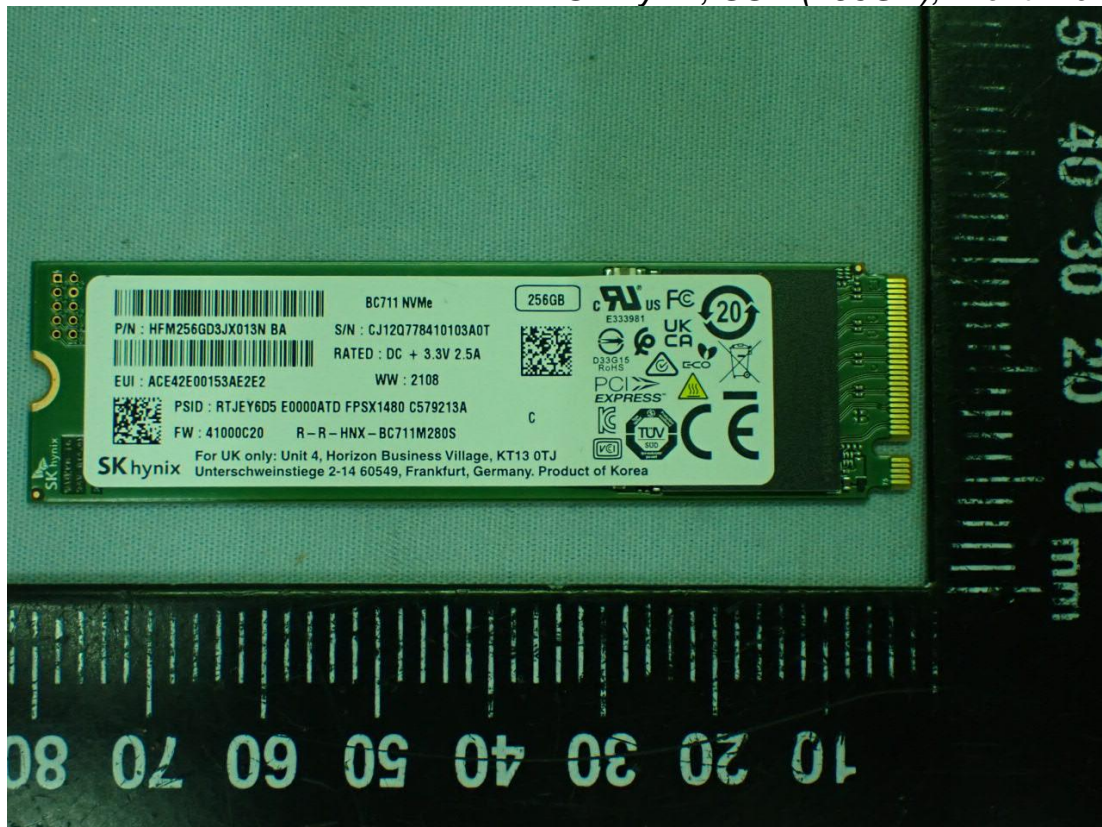


Figure 35
SK hynix, SSD (256GB), Back View

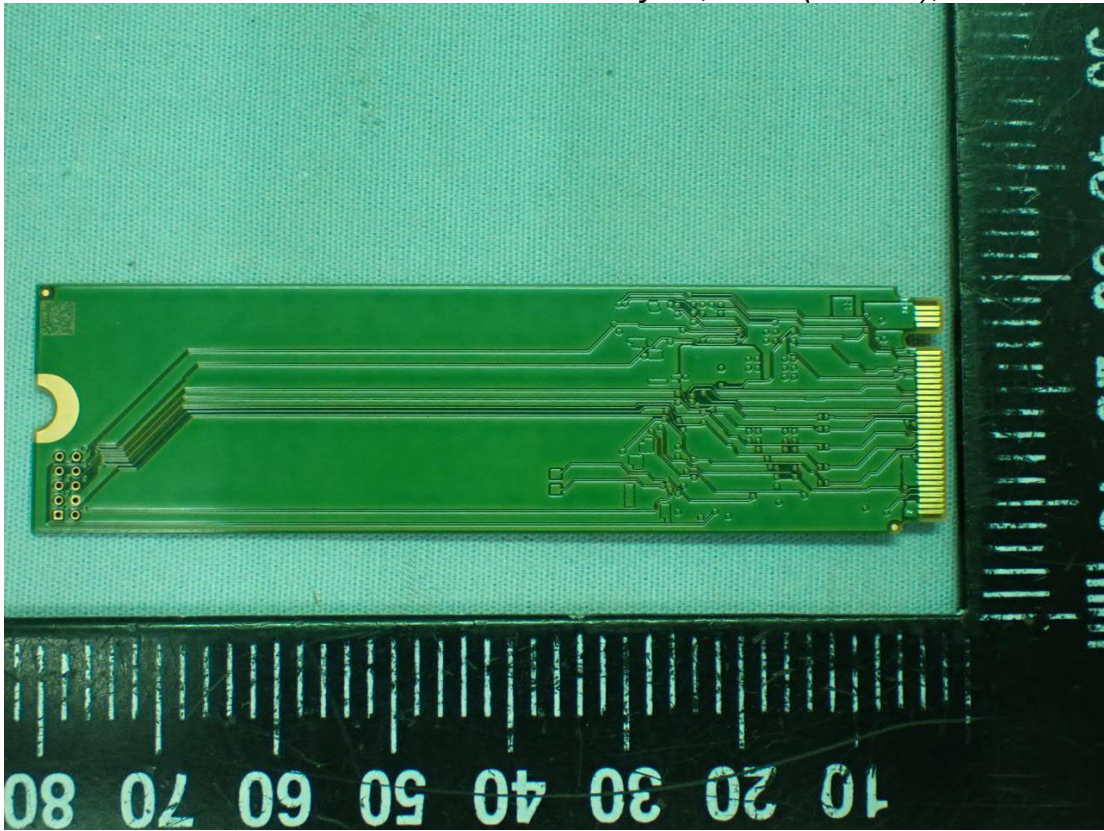


Figure 36
SK hynix, SSD (512GB), Front View

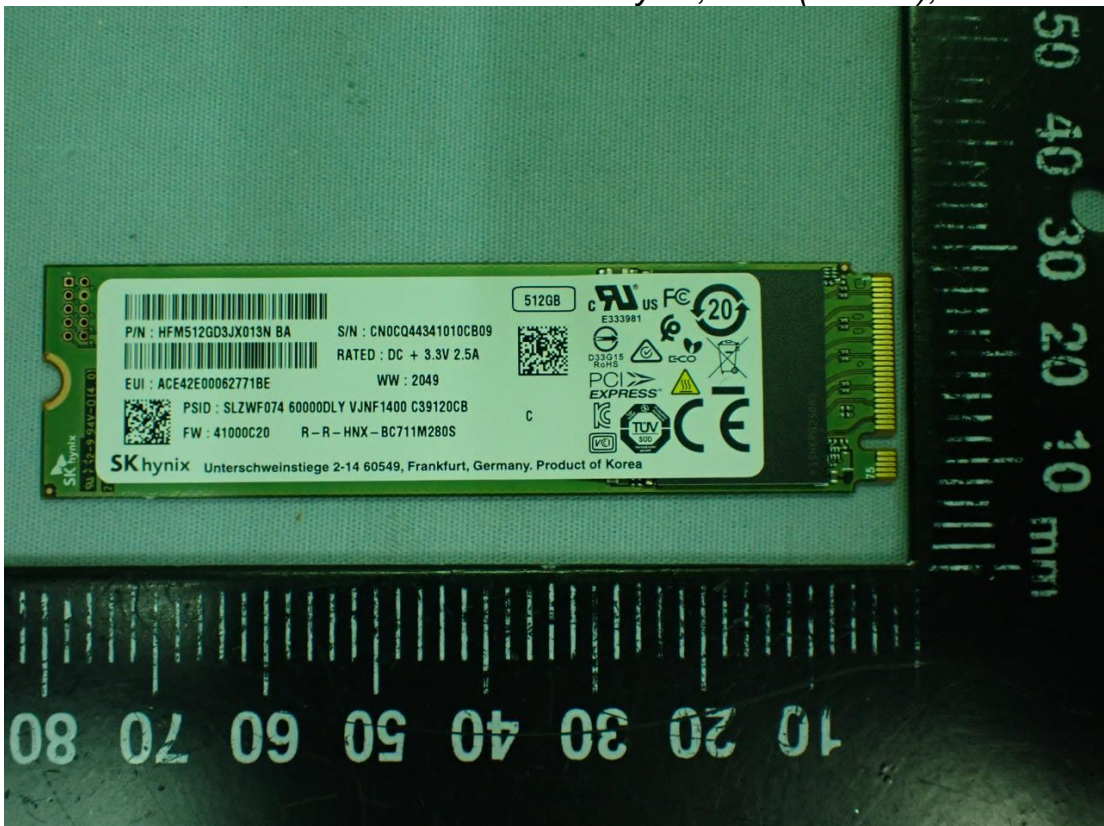


Figure 37
SK hynix, SSD (512GB), Back View

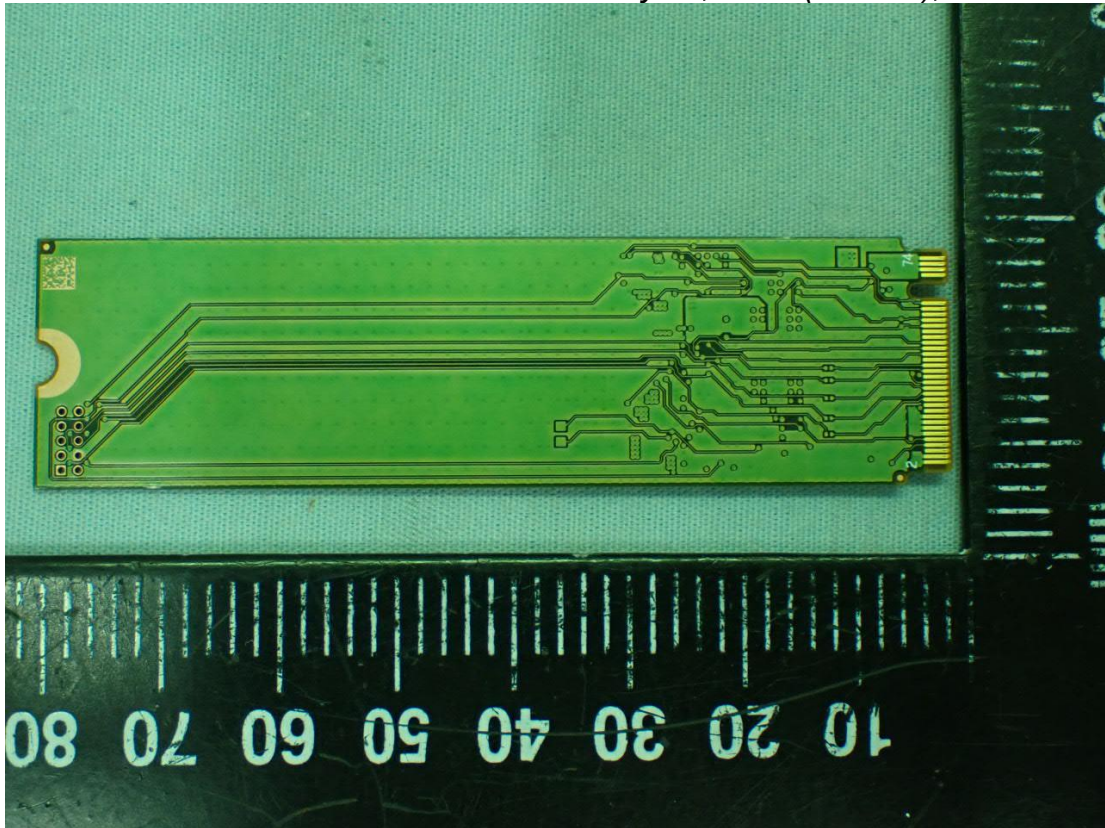


Figure 38
SK hynix, SSD (1TB), Front View

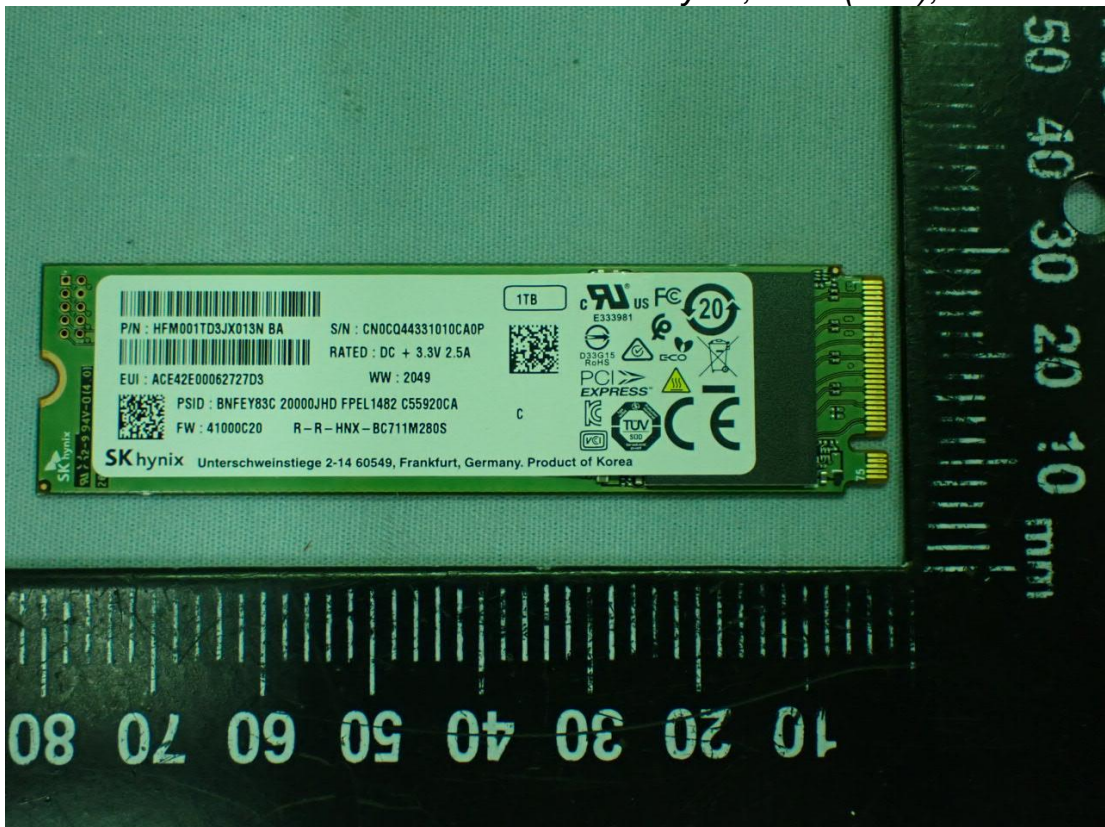


Figure 39
SK hynix, SSD (1TB), Back View

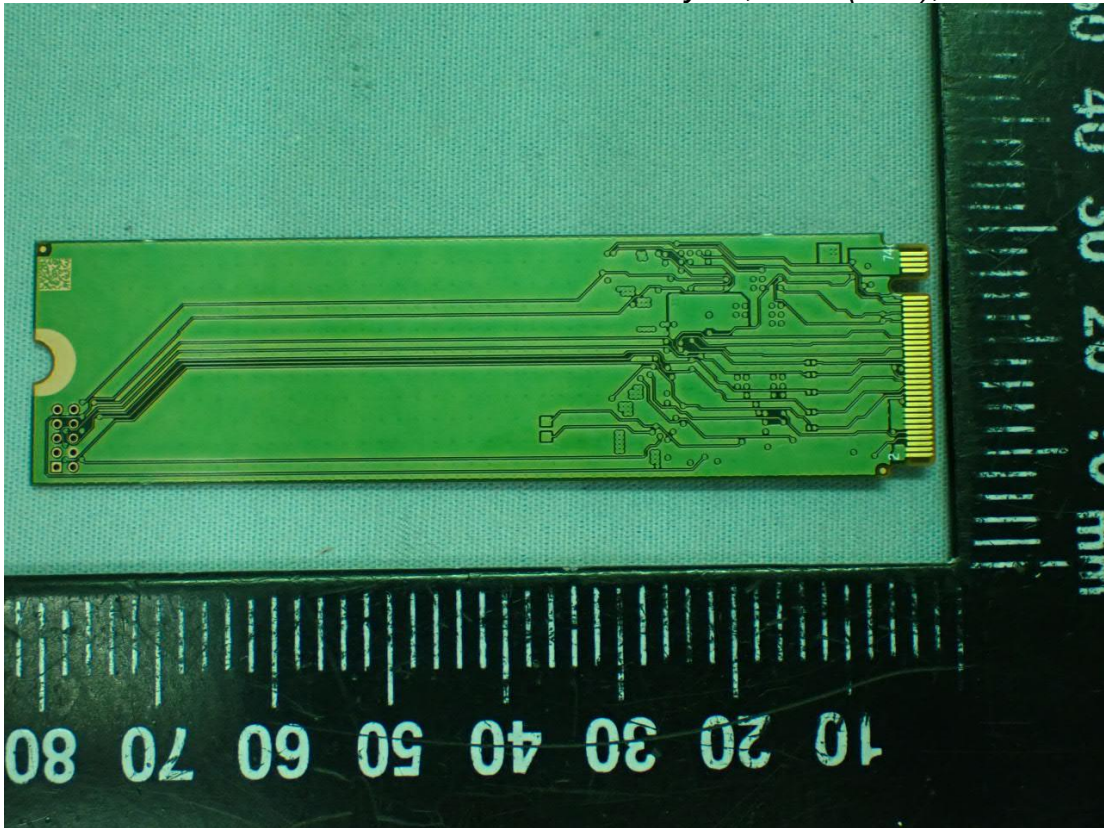


Figure 40
SUZHOU MEC (100 Megabit Ethernet), LAN Gender (White)

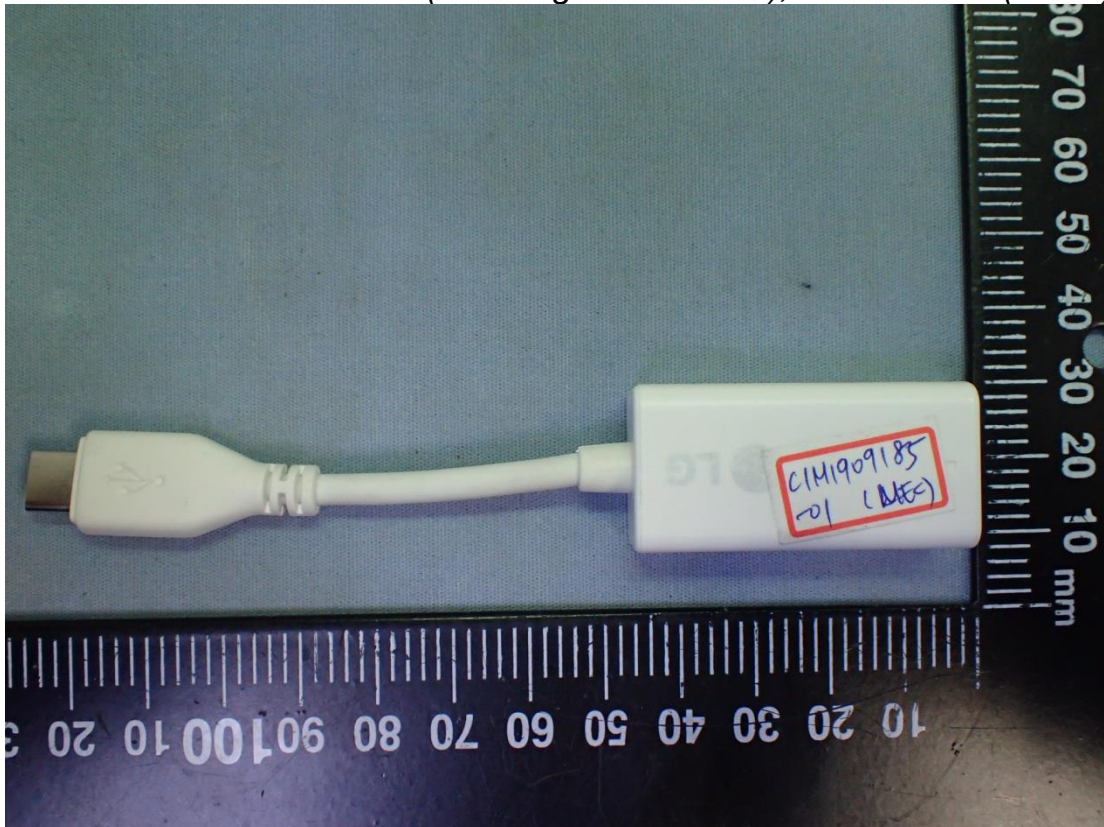


Figure 41
SUZHOU MEC (100 Megabit Ethernet), LAN Gender (White), IO View

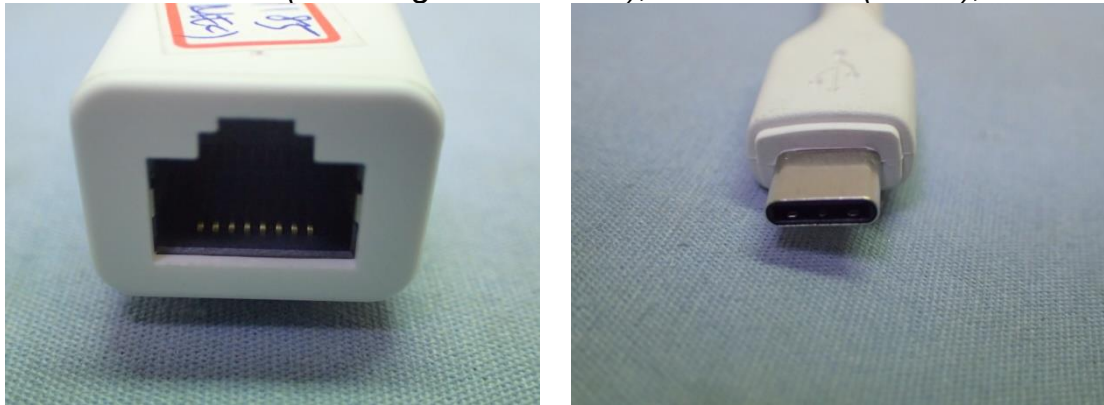


Figure 42
ARIN (100 Megabit Ethernet), LAN Gender (White)

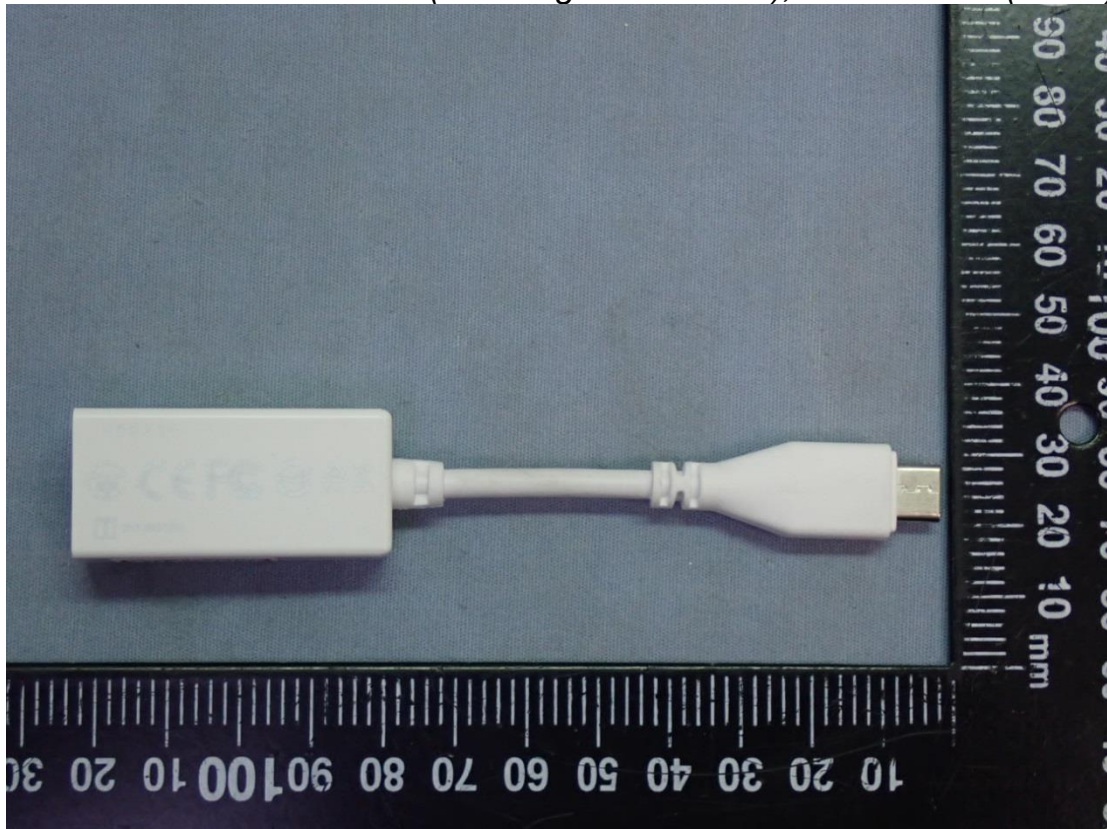


Figure 43
ARIN (100 Megabit Ethernet), LAN Gender (White), IO View

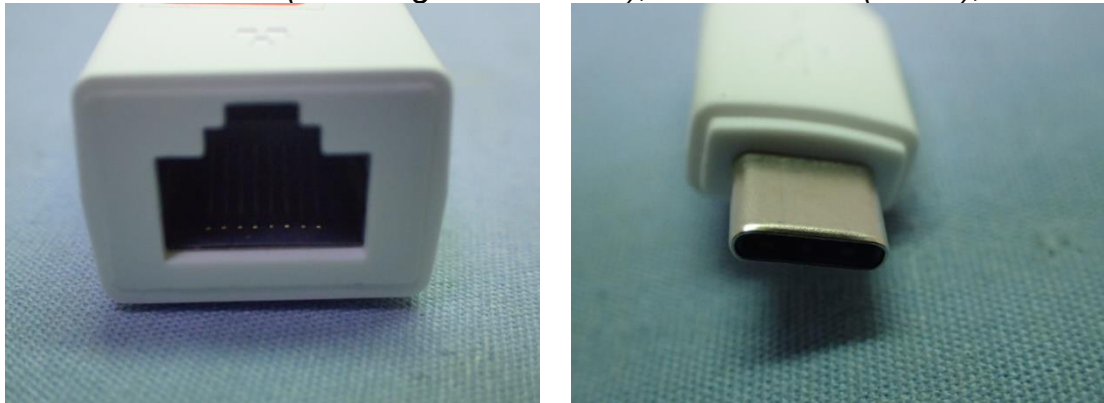


Figure 44
MEC & ARIN (100 Megabit Ethernet), LAN Gender (Black), Front View

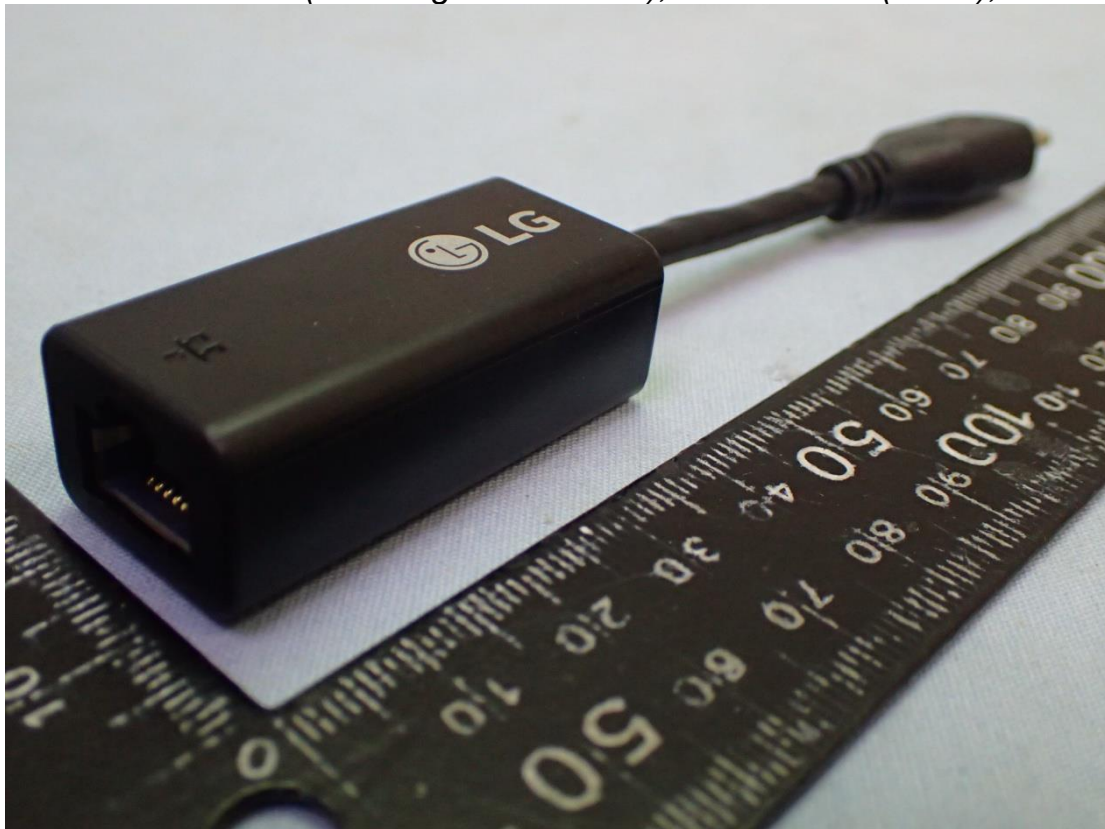


Figure 45
MEC & ARIN (100 Megabit Ethernet), LAN Gender (Black), Back View

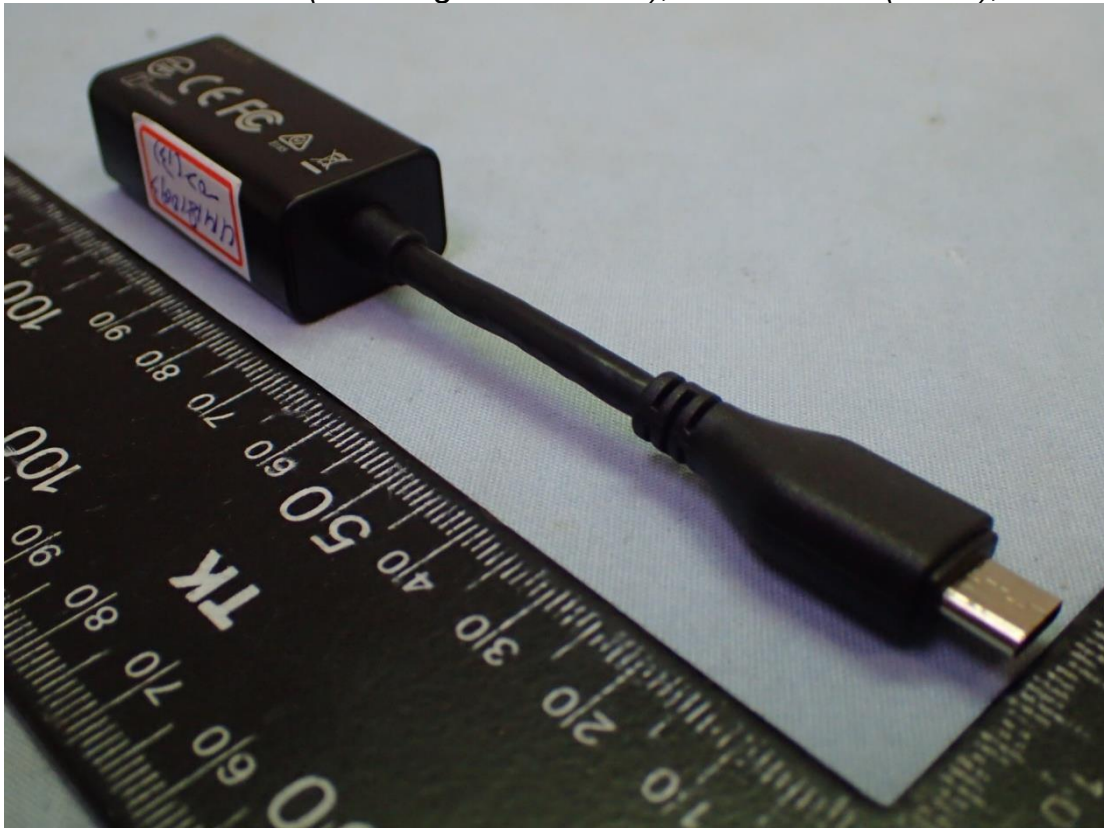
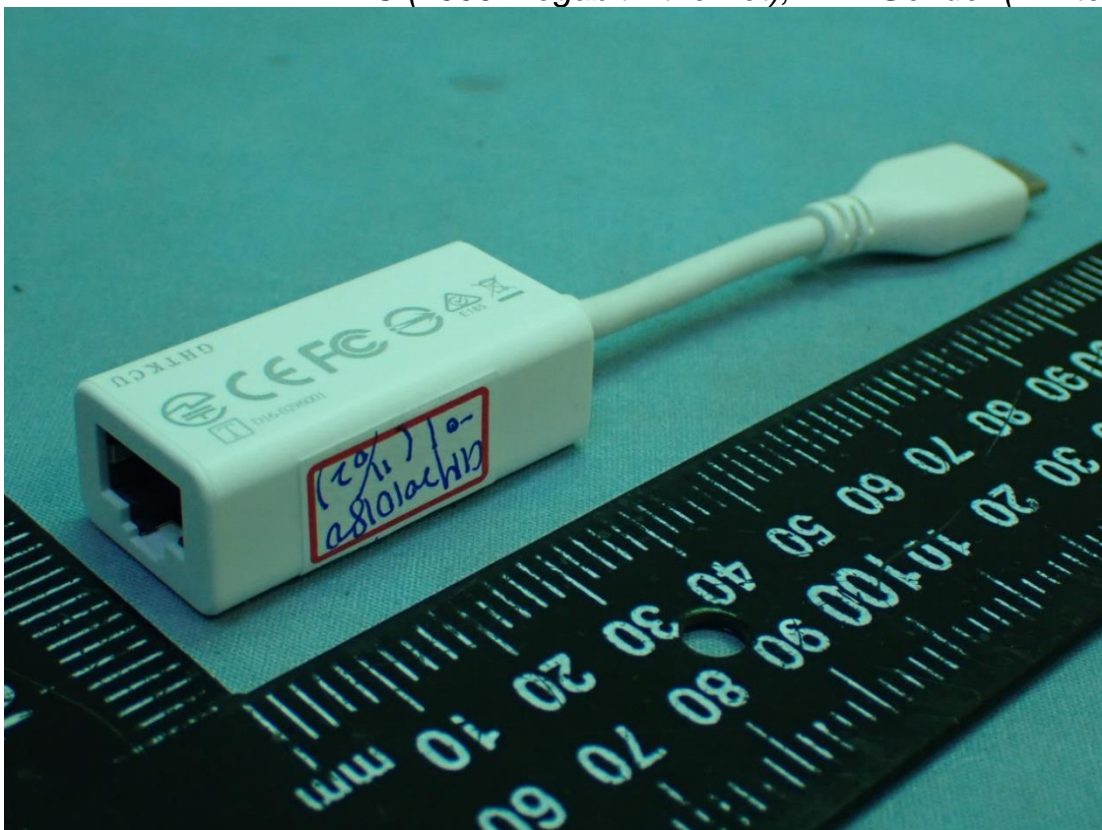
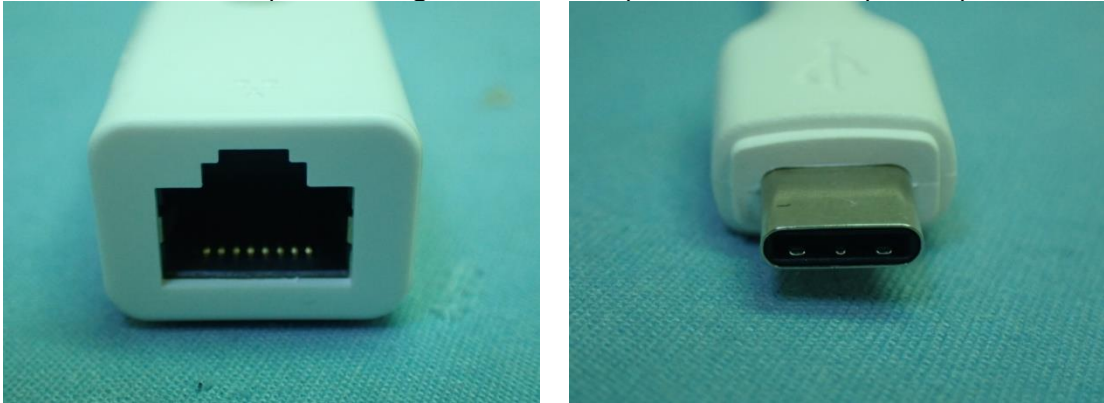


Figure 46
MEC (1000 Megabit Ethernet), LAN Gender (White)



*Figure 47
MEC (1000 Megabit Ethernet), LAN Gender (White), IO View*



*Figure 48
MEC (1000 Megabit Ethernet), LAN Gender (Black)*



Figure 49
MEC (1000 Megabit Ethernet), LAN Gender (Black), IO View

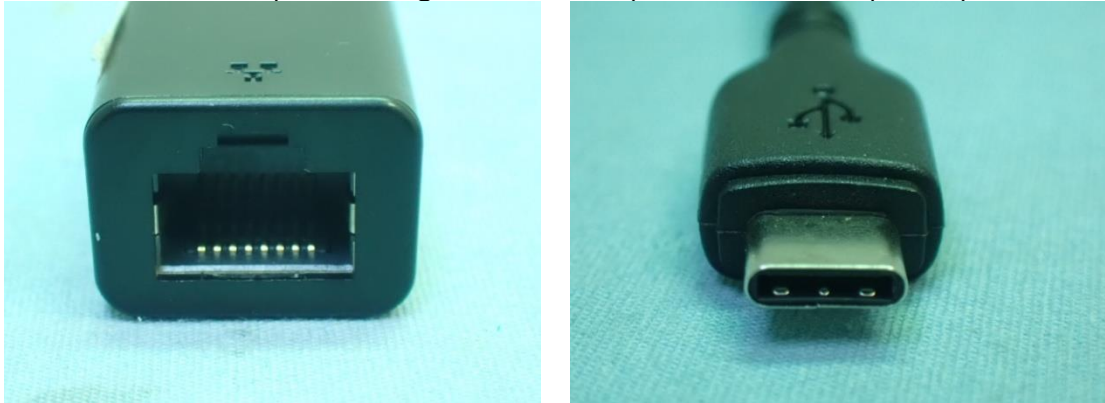


Figure 50
AC Adapter (White), Front View

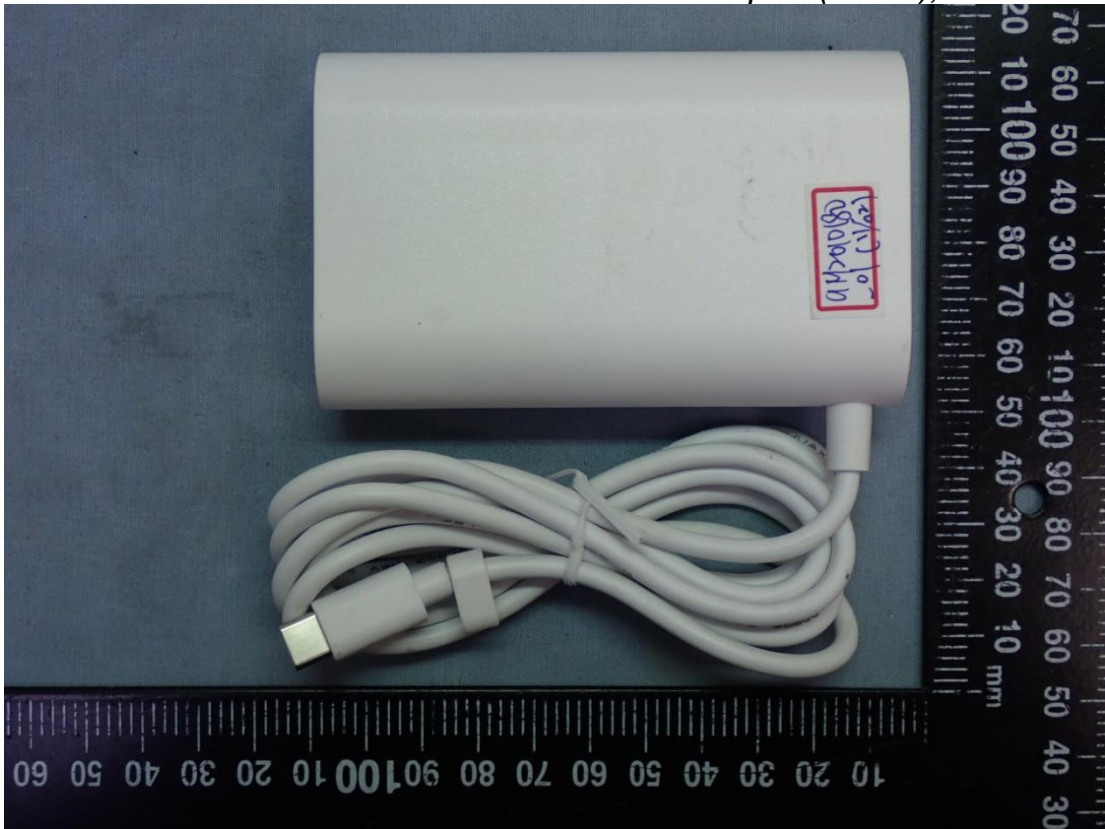


Figure 51
AC Adapter (White), Back View



Figure 52
AC Adapter (White), AC Inlet View

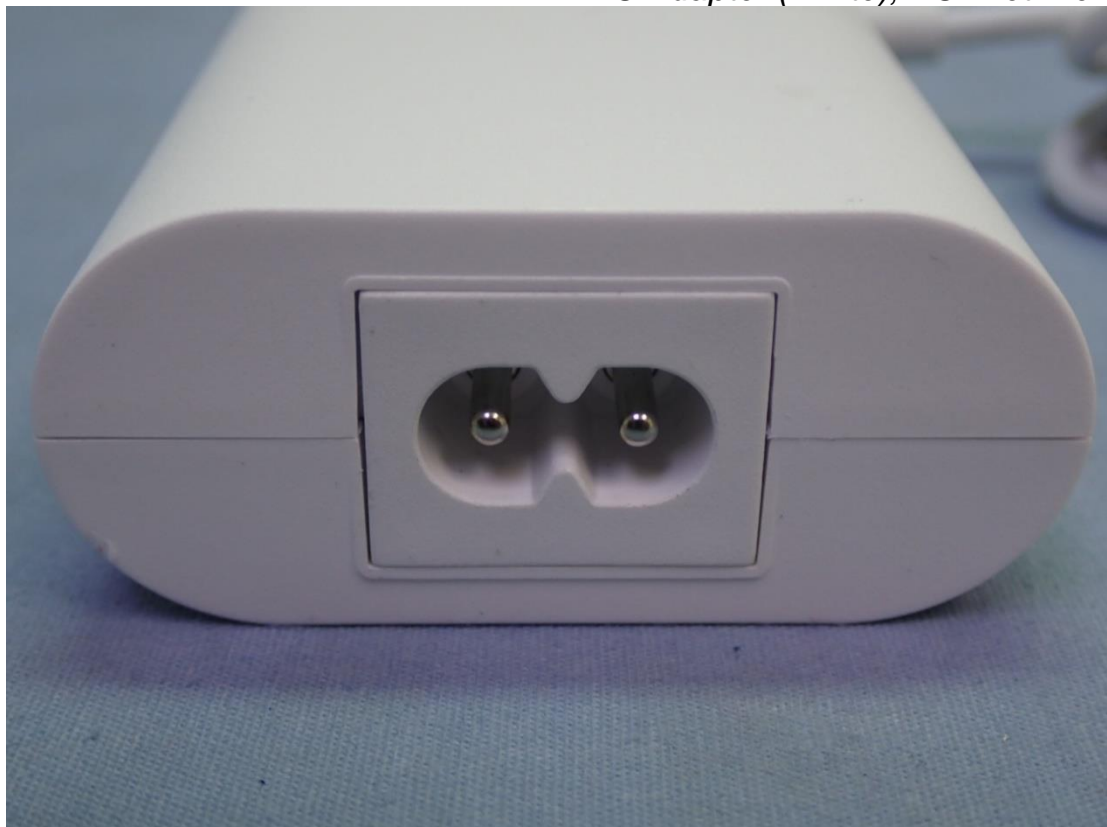


Figure 53
AC Adapter (Black), Front View



Figure 54
AC Adapter (Black), Back View



Figure 55
AC Adapter (Black), AC Inlet View



Figure 56
AC Adapter, Label View



Figure 57
AC Power Cord (1.55m)

