

● **SAR Test Result**

Test SKU: SKU #1 (with INPAQ Antenna)
Antenna-AUX, Test Position: Screen

Measurement Report for 16Z90SP, SCREEN, U-NII-6, UID 10755 AAC, Channel 111 (6505.0MHz)

Device under Test Properties

Model, Manufacturer	Dimensions [mm]	IMEI	DUT Type
16Z90SP,	360.0 x 250.0 x 10.0		Laptop

Exposure Conditions

Phantom Section, TSL	Position, Test Distance [mm]	Band	Group, UID	Frequency [MHz], Channel Number	Conversion Factor	TSL Conductivity [S/m]	TSL Permittivity
Flat, HSL	SCREEN, 5.00	U-NII-6	WLAN, 10755-AAC	6505.0, 111	5.25	6.08	34.0

Hardware Setup

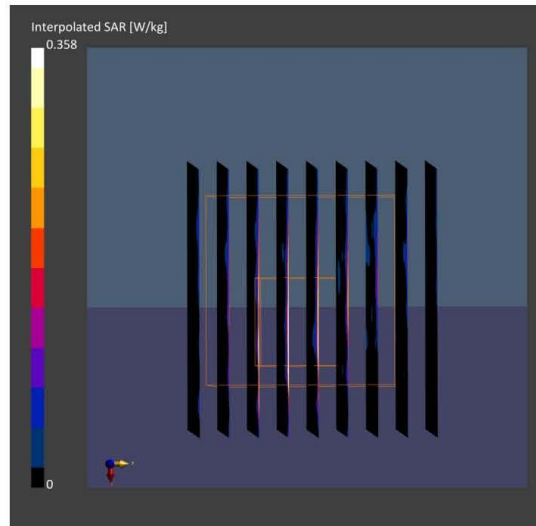
Phantom	TSL, Measured Date	Probe, Calibration Date	DAE, Calibration Date
ELI V5.0 (20deg probe tilt) - 1170	HBBL-600-10000	EX3DV4 - SN3855, 2023-09-20	DAE4 Sn1337, 2023-03-31

Scan Setup

	Area Scan	Zoom Scan
Grid Extents [mm]	102.0 x 170.0	22.0 x 22.0 x 22.0
Grid Steps [mm]	8.5 x 8.5	3.4 x 3.4 x 1.4
Sensor Surface [mm]	3.0	1.4
Graded Grid	Yes	Yes
Grading Ratio	1.5	1.4
MAIA	Y	Y
Surface Detection	VMS + 6p	VMS + 6p
Scan Method	Measured	Measured

Measurement Results

	Area Scan	Zoom Scan
Date	2023-10-26	2023-10-26
psSAR1g [W/kg]	0.065	0.067
psSAR10g [W/kg]	0.019	0.020
psAPD (1.0cm2, sq) [W/m2]		0.668
psAPD (4.0cm2, sq) [W/m2]		0.459
Power Drift [dB]	-0.30	0.01
Power Scaling	Disabled	Disabled
Scaling Factor [dB]		
TSL Correction	No correction	No correction
M2/M1 [%]		54.2
Dist 3dB Peak [mm]		5.0



Antenna AUX, Test Position: Bottom

Measurement Report for 16Z90SP, BOTTOM, U-NII-6, UID 10755 AAC, Channel 111 (6505.0MHz)

Device under Test Properties

Model, Manufacturer	Dimensions [mm]	IMEI	DUT Type
16Z90SP,	360.0 x 250.0 x 10.0		Laptop

Exposure Conditions

Phantom Section, TSL	Position, Test Distance [mm]	Band	Group, UID	Frequency [MHz], Channel Number	Conversion Factor	TSL Conductivity [S/m]	TSL Permittivity
Flat, HSL	BOTTOM, 0.00	U-NII-6	WLAN, 10755-AAC	6505.0, 111	5.25	6.08	34.0

Hardware Setup

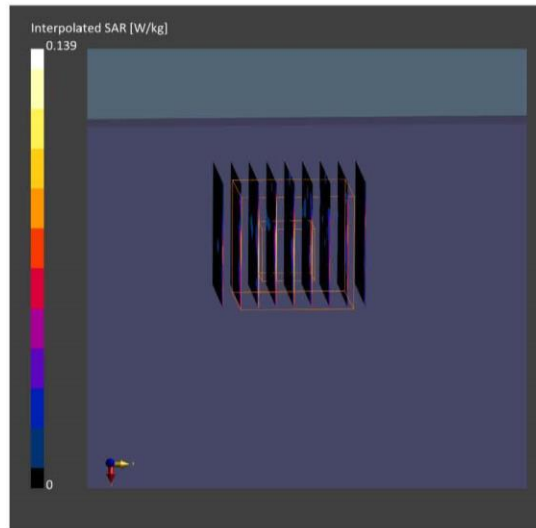
Phantom	TSL, Measured Date	Probe, Calibration Date	DAE, Calibration Date
ELI V5.0 (20deg probe tilt) - 1170	HBBL-600-10000	EX3DV4 - SN3855, 2023-09-20	DAE4 Sn1337, 2023-03-31

Scan Setup

	Area Scan	Zoom Scan
Grid Extents [mm]	102.0 x 102.0	22.0 x 22.0 x 22.0
Grid Steps [mm]	8.5 x 8.5	3.4 x 3.4 x 1.4
Sensor Surface [mm]	3.0	1.4
Graded Grid	Yes	Yes
Grading Ratio	1.5	1.4
MAIA	Y	Y
Surface Detection	VMS + 6p	VMS + 6p
Scan Method	Measured	Measured

Measurement Results

	Area Scan	Zoom Scan
Date	2023-10-26	2023-10-26
psSAR1g [W/kg]	0.020	0.029
psSAR10g [W/kg]	0.007	0.008
psAPD (1.0cm2, sq) [W/m2]		0.287
psAPD (4.0cm2, sq) [W/m2]		0.180
Power Drift [dB]	10.72	-1.73
Power Scaling	Disabled	Disabled
Scaling Factor [dB]		
TSL Correction	No correction	No correction
M2/M1 [%]		50.1
Dist 3dB Peak [mm]		> 11.0



Test SKU: SKU #1 (with LUXSHARE-ICT Antenna)
Antenna-Main, Test Position: Screen

Measurement Report for 16Z90SP, SCREEN, U-NII-6, UID 10755 AAC, Channel 111 (6505.0MHz)

Device under Test Properties

Model, Manufacturer	Dimensions [mm]	IMEI	DUT Type
16Z90SP,	360.0 x 250.0 x 10.0		Laptop

Exposure Conditions

Phantom Section, TSL	Position, Test Distance [mm]	Band	Group, UID	Frequency [MHz], Channel Number	Conversion Factor	TSL Conductivity [S/m]	TSL Permittivity
Flat, HSL	SCREEN, 5.00	U-NII-6	WLAN, 10755-AAC	6505.0, 111	5.25	6.08	34.0

Hardware Setup

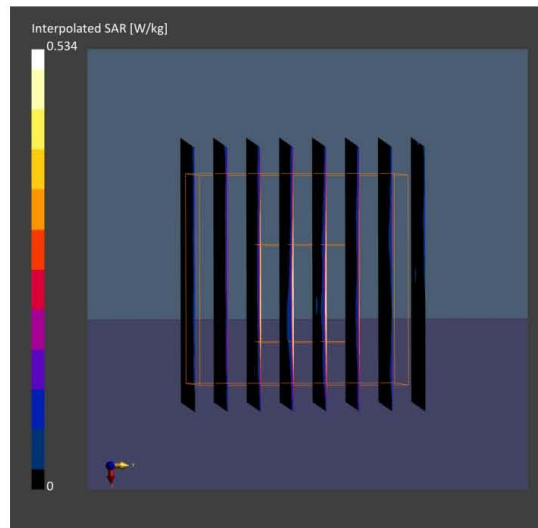
Phantom	TSL, Measured Date	Probe, Calibration Date	DAE, Calibration Date
ELI V5.0 (20deg probe tilt) - 1170	HBBL-600-10000	EX3DV4 - SN3855, 2023-09-20	DAE4 Sn1337, 2023-03-31

Scan Setup

	Area Scan	Zoom Scan
Grid Extents [mm]	102.0 x 170.0	22.0 x 22.0 x 22.0
Grid Steps [mm]	8.5 x 8.5	3.4 x 3.4 x 1.4
Sensor Surface [mm]	3.0	1.4
Graded Grid	Yes	Yes
Grading Ratio	1.5	1.4
MAIA	Y	Y
Surface Detection	VMS + 6p	VMS + 6p
Scan Method	Measured	Measured

Measurement Results

	Area Scan	Zoom Scan
Date	2023-10-26	2023-10-26
psSAR1g [W/kg]	0.072	0.108
psSAR10g [W/kg]	0.017	0.033
psAPD (1.0cm ² , sq) [W/m ²]		1.08
psAPD (4.0cm ² , sq) [W/m ²]		0.789
Power Drift [dB]	1.64	1.39
Power Scaling	Disabled	Disabled
Scaling Factor [dB]		
TSL Correction	No correction	No correction
M2/M1 [%]		55.6
Dist 3dB Peak [mm]		6.1



Antenna Main, Test Position: Bottom

Measurement Report for 16Z90SP, BOTTOM, U-NII-6, UID 10755 AAC, Channel 111 (6505.0MHz)

Device under Test Properties

Model, Manufacturer	Dimensions [mm]	IMEI	DUT Type
16Z90SP,	360.0 x 250.0 x 10.0		Laptop

Exposure Conditions

Phantom Section, TSL	Position, Test Distance [mm]	Band	Group, UID	Frequency [MHz], Channel Number	Conversion Factor	TSL Conductivity [S/m]	TSL Permittivity
Flat, HSL	BOTTOM, 0.00	U-NII-6	WLAN, 10755-AAC	6505.0, 111	5.25	6.08	34.0

Hardware Setup

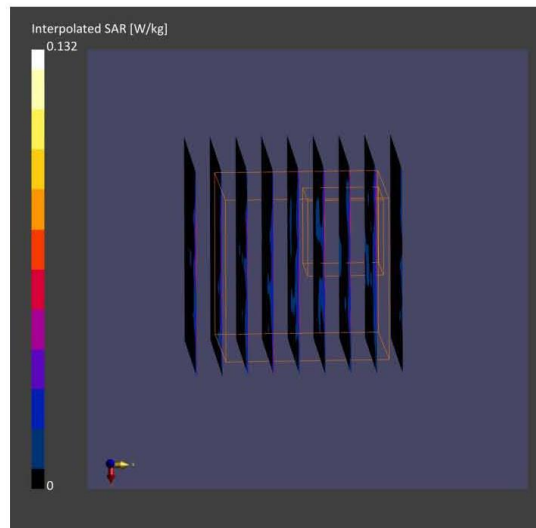
Phantom	TSL, Measured Date	Probe, Calibration Date	DAE, Calibration Date
ELI V5.0 (20deg probe tilt) - 1170	HBBL-600-10000 -	EX3DV4 - SN3855, 2023-09-20	DAE4 Sn1337, 2023-03-31

Scan Setup

	Area Scan	Zoom Scan
Grid Extents [mm]	102.0 x 170.0	22.0 x 22.0 x 22.0
Grid Steps [mm]	8.5 x 8.5	3.4 x 3.4 x 1.4
Sensor Surface [mm]	3.0	1.4
Graded Grid	Yes	Yes
Grading Ratio	1.5	1.4
MAIA	Y	Y
Surface Detection	VMS + 6p	VMS + 6p
Scan Method	Measured	Measured

Measurement Results

	Area Scan	Zoom Scan
Date	2023-10-26	2023-10-26
psSAR1g [W/kg]	0.027	0.019
psSAR10g [W/kg]	0.011	0.009
psAPD (1.0cm ² , sq) [W/m ²]		0.189
psAPD (4.0cm ² , sq) [W/m ²]		0.201
Power Drift [dB]	1.26	n/a
Power Scaling	Disabled	Disabled
Scaling Factor [dB]		
TSL Correction	No correction	No correction
M2/M1 [%]		41.6
Dist 3dB Peak [mm]		> 11.0



● **Worst Case For SAR Test Result**
Test SKU: SKU #2 (with INPAQ Antenna Antenna)
Antenna-AUX

Measurement Report for 16Z90SP, SCREEN, U-NII-6, UID 10755 AAC, Channel 111 (6505.0MHz)

Device under Test Properties

Model, Manufacturer	Dimensions [mm]	IMEI	DUT Type
16Z90SP,	360.0 x 250.0 x 10.0		Laptop

Exposure Conditions

Phantom Section, TSL	Position, Test Distance [mm]	Band	Group, UID	Frequency [MHz], Channel Number	Conversion Factor	TSL Conductivity [S/m]	TSL Permittivity
Flat, HSL	SCREEN, 5.00	U-NII-6	WLAN, 10755-AAC	6505.0, 111	5.25	6.08	34.0

Hardware Setup

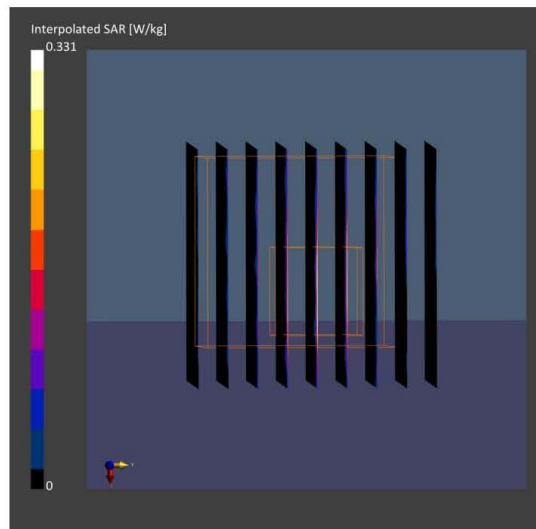
Phantom	TSL, Measured Date	Probe, Calibration Date	DAE, Calibration Date
ELI V5.0 (20deg probe tilt) - 1170	HBBL-600-10000	EX3DV4 - SN3855, 2023-09-20	DAE4 Sn1337, 2023-03-31

Scan Setup

	Area Scan	Zoom Scan
Grid Extents [mm]	102.0 x 170.0	22.0 x 22.0 x 22.0
Grid Steps [mm]	8.5 x 8.5	3.4 x 3.4 x 1.4
Sensor Surface [mm]	3.0	1.4
Graded Grid	Yes	Yes
Grading Ratio	1.5	1.4
MAIA	Y	Y
Surface Detection	VMS + 6p	VMS + 6p
Scan Method	Measured	Measured

Measurement Results

	Area Scan	Zoom Scan
Date	2023-10-26	2023-10-26
psSAR1g [W/kg]	0.048	0.061
psSAR10g [W/kg]	0.011	0.016
psAPD (1.0cm2, sq) [W/m2]		0.610
psAPD (4.0cm2, sq) [W/m2]		0.370
Power Drift [dB]	-0.58	0.56
Power Scaling	Disabled	Disabled
Scaling Factor [dB]		
TSL Correction	No correction	No correction
M2/M1 [%]		47.5
Dist 3dB Peak [mm]		5.6



Test SKU: SKU #2 (with LUXSHARE-ICT Antenna)

Antenna-Main

Measurement Report for 16Z90SP, SCREEN, U-NII-6, UID 10755 AAC, Channel 111 (6505.0MHz)

Device under Test Properties

Model, Manufacturer	Dimensions [mm]	IMEI	DUT Type
16Z90SP,	360.0 x 250.0 x 10.0		Laptop

Exposure Conditions

Phantom Section, TSL	Position, Test Distance [mm]	Band	Group, UID	Frequency [MHz], Channel Number	Conversion Factor	TSL Conductivity [S/m]	TSL Permittivity
Flat, HSL	SCREEN, 5.00	U-NII-6	WLAN, 10755-AAC	6505.0, 111	5.25	6.08	34.0

Hardware Setup

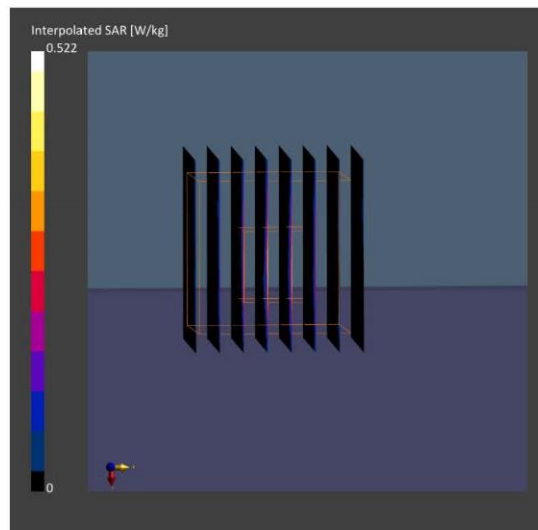
Phantom	TSL, Measured Date	Probe, Calibration Date	DAE, Calibration Date
ELI V5.0 (20deg probe tilt) - 1170	HBBL-600-10000	EX3DV4 - SN3855, 2023-09-20	DAE4 Sn1337, 2023-03-31

Scan Setup

	Area Scan	Zoom Scan
Grid Extents [mm]	102.0 x 170.0	22.0 x 22.0 x 22.0
Grid Steps [mm]	8.5 x 8.5	3.4 x 3.4 x 1.4
Sensor Surface [mm]	3.0	1.4
Graded Grid	Yes	Yes
Grading Ratio	1.5	1.4
MAIA	Y	Y
Surface Detection	VMS + 6p	VMS + 6p
Scan Method	Measured	Measured

Measurement Results

	Area Scan	Zoom Scan
Date	2023-10-26	2023-10-26
psSAR1g [W/kg]	0.065	0.101
psSAR10g [W/kg]	0.016	0.031
psAPD (1.0cm ² , sq) [W/m ²]		1.01
psAPD (4.0cm ² , sq) [W/m ²]		0.741
Power Drift [dB]	1.11	1.04
Power Scaling	Disabled	Disabled
Scaling Factor [dB]		
TSL Correction	No correction	No correction
M2/M1 [%]		54.3
Dist 3dB Peak [mm]		6.6



● **Power Density Test Result**
Test SKU: SKU #1 (with INPAQ Antenna)
Antenna-AUX

Measurement Report for 16Z90SP, SCREEN, U-NII-5, UID 10755 AAC, Channel 47 (6185.0MHz)

Device under Test Properties

Model, Manufacturer	Dimensions [mm]	IMEI	DUT Type
, 16Z90SP	360.0 x 250.0 x 10.0		Laptop

Exposure Conditions

Phantom Section	Position, Test Distance [mm]	Band	Group, UID	Frequency [MHz], Channel Number	Conversion Factor
5G Air	SCREEN, 2.00	U-NII-5	WLAN, 10755-AAC	6185.0, 47	1.0

Hardware Setup

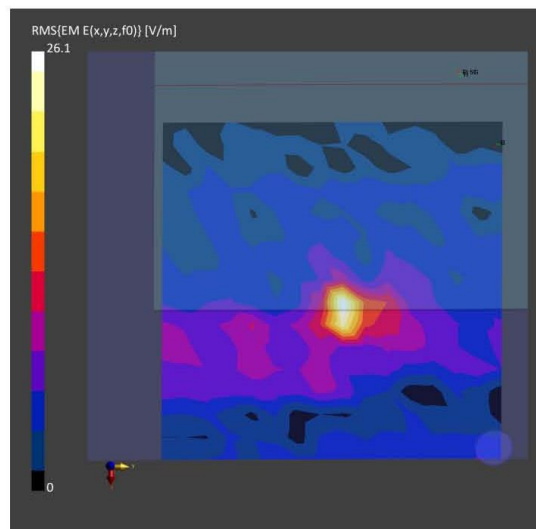
Phantom	Medium	Probe, Calibration Date	DAE, Calibration Date
mmWave- 1059	Air---	EUmWV4 - SN9544_F1-55GHz, 2023-04-19	DAE4 Sn1337, 2023-03-31

Scan Setup

	5G Scan
Grid Extents [mm]	120.0 x 120.0
Grid Steps [lambda]	0.25 x 0.25
Sensor Surface [mm]	2.0
MAIA	N/A

Measurement Results

	5G Scan
Date	2023-10-27
Avg. Area [cm ²]	1.00
psPDn+ [W/m ²]	0.460
psPDtot+ [W/m ²]	0.637
psPDmod+ [W/m ²]	0.733
E _{max} [V/m]	26.1
Power Drift [dB]	0.87



Measurement Report for 16Z90SP, SCREEN, U-NII-5, UID 10755 AAC, Channel 79 (6345.0MHz)

Device under Test Properties

Model, Manufacturer	Dimensions [mm]	IMEI	DUT Type
, 16Z90SP	360.0 x 250.0 x 10.0		Laptop

Exposure Conditions

Phantom Section	Position, Test Distance [mm]	Band	Group, UID	Frequency [MHz], Channel Number	Conversion Factor
5G Air	SCREEN, 2.00	U-NII-5	WLAN, 10755-AAC	6345.0, 79	1.0

Hardware Setup

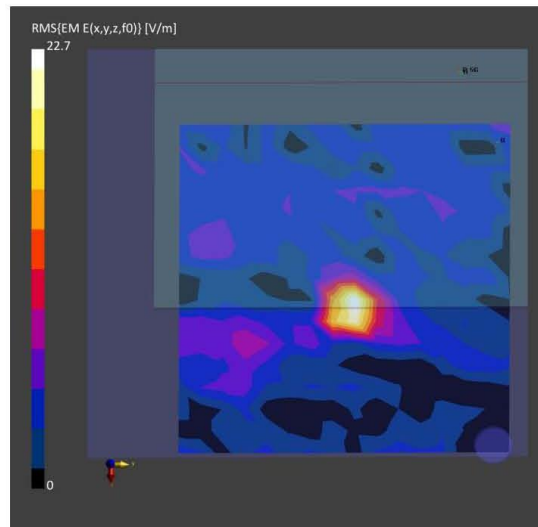
Phantom	Medium	Probe, Calibration Date	DAE, Calibration Date
mmWave- 1059	Air---	EUmWV4 - SN9544_F1-55GHz, 2023-04-19	DAE4 Sn1337, 2023-03-31

Scan Setup

	5G Scan
Grid Extents [mm]	120.0 x 120.0
Grid Steps [lambda]	0.25 x 0.25
Sensor Surface [mm]	2.0
MAIA	N/A

Measurement Results

	5G Scan
Date	2023-10-27
Avg. Area [cm ²]	1.00
psPDn+ [W/m ²]	0.485
psPDtot+ [W/m ²]	0.530
psPDmod+ [W/m ²]	0.583
E _{max} [V/m]	22.7
Power Drift [dB]	-0.48



Measurement Report for 16Z90SP, SCREEN, U-NII-6, UID 10755 AAC, Channel 111 (6505.0MHz)

Device under Test Properties

Model, Manufacturer	Dimensions [mm]	IMEI	DUT Type
, 16Z90SP	360.0 x 250.0 x 10.0		Laptop

Exposure Conditions

Phantom Section	Position, Test Distance [mm]	Band	Group, UID	Frequency [MHz], Channel Number	Conversion Factor
5G Air	SCREEN, 2.00	U-NII-6	WLAN, 10755-AAC	6505.0, 111	1.0

Hardware Setup

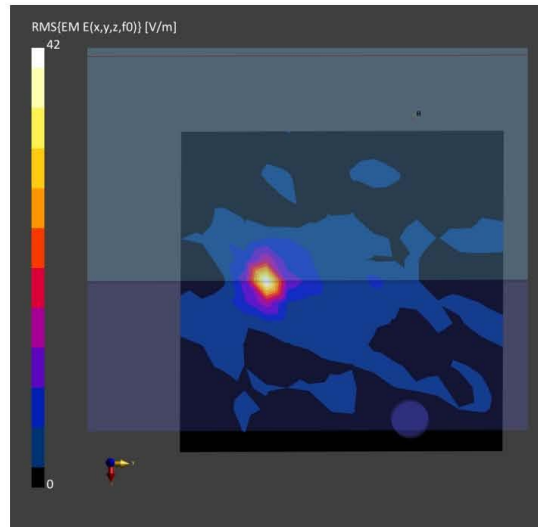
Phantom	Medium	Probe, Calibration Date	DAE, Calibration Date
mmWave- 1059	Air---	EUmmWV4 - SN9544_F1-55GHz, 2023-04-19	DAE4 Sn1337, 2023-03-31

Scan Setup

	5G Scan
Grid Extents [mm]	120.0 x 120.0
Grid Steps [lambda]	0.25 x 0.25
Sensor Surface [mm]	2.0
MAIA	N/A

Measurement Results

	5G Scan
Date	2023-10-27
Avg. Area [cm ²]	1.00
psPDn+ [W/m ²]	0.973
psPDtot+ [W/m ²]	1.11
psPDmod+ [W/m ²]	1.89
E _{max} [V/m]	42.0
Power Drift [dB]	n/a



Measurement Report for 16Z90SP, SCREEN, U-NII-7, UID 10755 AAC, Channel 143 (6665.0MHz)

Device under Test Properties

Model, Manufacturer	Dimensions [mm]	IMEI	DUT Type
, 16Z90SP	360.0 x 250.0 x 10.0		Laptop

Exposure Conditions

Phantom Section	Position, Test Distance [mm]	Band	Group, UID	Frequency [MHz], Channel Number	Conversion Factor
5G Air	SCREEN, 2.00	U-NII-7	WLAN, 10755-AAC	6665.0, 143	1.0

Hardware Setup

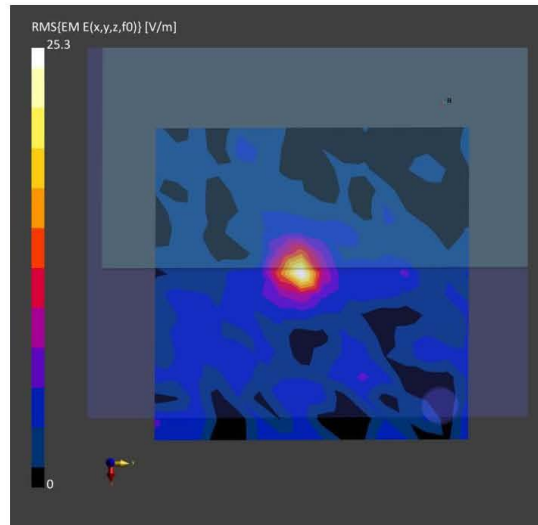
Phantom	Medium	Probe, Calibration Date	DAE, Calibration Date
mmWave- 1059	Air---	EUmmWV4 - SN9544_F1-55GHz, 2023-04-19	DAE4 Sn1337, 2023-03-31

Scan Setup

	5G Scan
Grid Extents [mm]	120.0 x 120.0
Grid Steps [lambda]	0.25 x 0.25
Sensor Surface [mm]	2.0
MAIA	N/A

Measurement Results

	5G Scan
Date	2023-10-27
Avg. Area [cm ²]	1.00
psPDn+ [W/m ²]	0.474
psPDtot+ [W/m ²]	0.487
psPDmod+ [W/m ²]	0.625
E _{max} [V/m]	25.3
Power Drift [dB]	2.53



Measurement Report for 16Z90SP, SCREEN, U-NII-8, UID 10755 AAC, Channel 207 (6985.0MHz)

Device under Test Properties

Model, Manufacturer	Dimensions [mm]	IMEI	DUT Type
, 16Z90SP	360.0 x 250.0 x 10.0		Laptop

Exposure Conditions

Phantom Section	Position, Test Distance [mm]	Band	Group, UID	Frequency [MHz], Channel Number	Conversion Factor
5G Air	SCREEN, 2.00	U-NII-8	WLAN, 10755-AAC	6985.0, 207	1.0

Hardware Setup

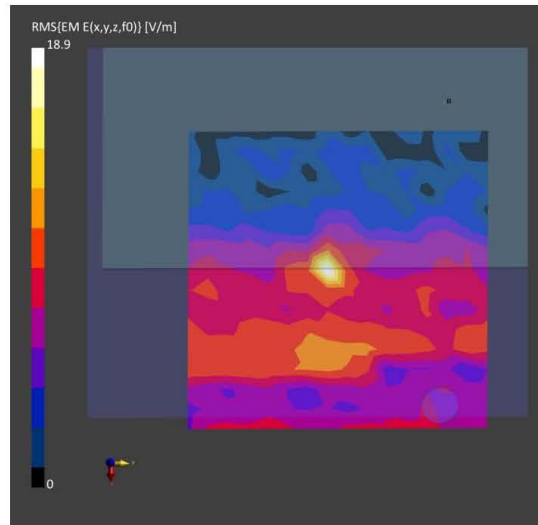
Phantom	Medium	Probe, Calibration Date	DAE, Calibration Date
mmWave- 1059	Air---	EUmmWV4 - SN9544_F1-55GHz, 2023-04-19	DAE4 Sn1337, 2023-03-31

Scan Setup

	5G Scan
Grid Extents [mm]	120.0 x 120.0
Grid Steps [lambda]	0.25 x 0.25
Sensor Surface [mm]	2.0
MAIA	N/A

Measurement Results

	5G Scan
Date	2023-10-27
Avg. Area [cm ²]	1.00
psPDn+ [W/m ²]	0.206
psPDtot+ [W/m ²]	0.239
psPDmod+ [W/m ²]	0.599
E _{max} [V/m]	18.9
Power Drift [dB]	1.82



Antenna-Main

Measurement Report for 16Z90SP, SCREEN, U-NII-5, UID 10755 AAC, Channel 47 (6185.0MHz)

Device under Test Properties

Model, Manufacturer	Dimensions [mm]	IMEI	DUT Type
, 16Z90SP	360.0 x 250.0 x 10.0		Laptop

Exposure Conditions

Phantom Section	Position, Test Distance [mm]	Band	Group, UID	Frequency [MHz], Channel Number	Conversion Factor
5G Air	SCREEN, 2.00	U-NII-5	WLAN, 10755-AAC	6185.0, 47	1.0

Hardware Setup

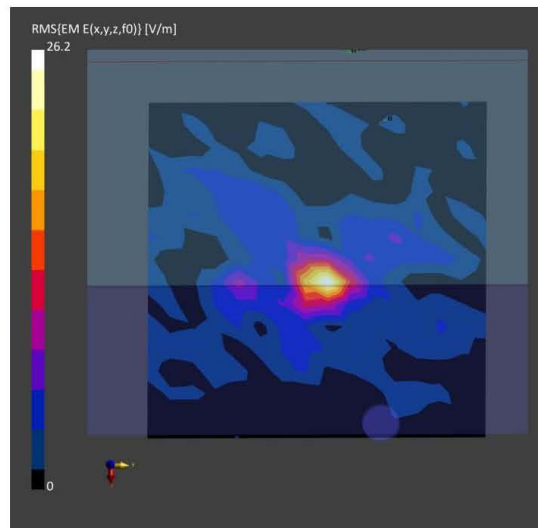
Phantom	Medium	Probe, Calibration Date	DAE, Calibration Date
mmWave- 1059	Air---	EUmmWV4 - SN9544_F1-55GHz, 2023-04-19	DAE4 Sn1337, 2023-03-31

Scan Setup

	5G Scan
Grid Extents [mm]	120.0 x 120.0
Grid Steps [lambda]	0.25 x 0.25
Sensor Surface [mm]	2.0
MAIA	N/A

Measurement Results

	5G Scan
Date	2023-10-27
Avg. Area [cm ²]	1.00
psPDn+ [W/m ²]	0.311
psPDtot+ [W/m ²]	0.528
psPDmod+ [W/m ²]	1.43
E _{max} [V/m]	26.2
Power Drift [dB]	-0.12



Measurement Report for 16Z90SP, SCREEN, U-NII-5, UID 10755 AAC, Channel 79 (6345.0MHz)

Device under Test Properties

Model, Manufacturer	Dimensions [mm]	IMEI	DUT Type
, 16Z90SP	360.0 x 250.0 x 10.0		Laptop

Exposure Conditions

Phantom Section	Position, Test Distance [mm]	Band	Group, UID	Frequency [MHz], Channel Number	Conversion Factor
5G Air	SCREEN, 2.00	U-NII-5	WLAN, 10755-AAC	6345.0, 79	1.0

Hardware Setup

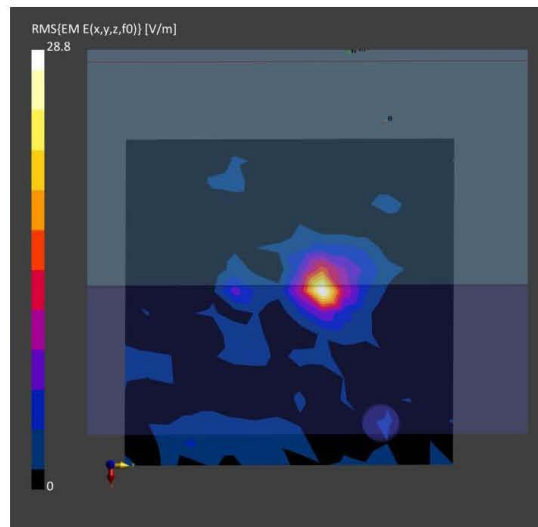
Phantom	Medium	Probe, Calibration Date	DAE, Calibration Date
mmWave- 1059	Air---	EUmmWV4 - SN9544_F1-55GHz, 2023-04-19	DAE4 Sn1337, 2023-03-31

Scan Setup

	5G Scan
Grid Extents [mm]	120.0 x 120.0
Grid Steps [lambda]	0.25 x 0.25
Sensor Surface [mm]	2.0
MAIA	N/A

Measurement Results

	5G Scan
Date	2023-10-27
Avg. Area [cm ²]	1.00
psPDn+ [W/m ²]	0.533
psPDtot+ [W/m ²]	0.549
psPDmod+ [W/m ²]	0.690
E _{max} [V/m]	28.8
Power Drift [dB]	31.76



Measurement Report for 16Z90SP, SCREEN, U-NII-6, UID 10755 AAC, Channel 111 (6505.0MHz)

Device under Test Properties

Model, Manufacturer	Dimensions [mm]	IMEI	DUT Type
, 16Z90SP	360.0 x 250.0 x 10.0		Laptop

Exposure Conditions

Phantom Section	Position, Test Distance [mm]	Band	Group, UID	Frequency [MHz], Channel Number	Conversion Factor
5G Air	SCREEN, 2.00	U-NII-6	WLAN, 10755-AAC	6505.0, 111	1.0

Hardware Setup

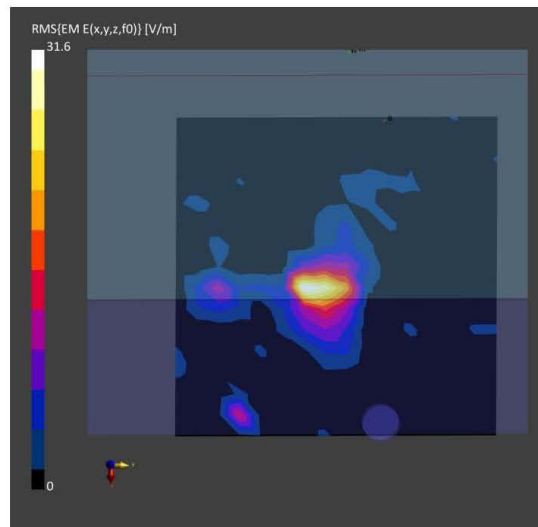
Phantom	Medium	Probe, Calibration Date	DAE, Calibration Date
mmWave- 1059	Air---	EUmmWV4 - SN9544_F1-55GHz, 2023-04-19	DAE4 Sn1337, 2023-03-31

Scan Setup

	5G Scan
Grid Extents [mm]	120.0 x 120.0
Grid Steps [lambda]	0.25 x 0.25
Sensor Surface [mm]	2.0
MAIA	N/A

Measurement Results

	5G Scan
Date	2023-10-27
Avg. Area [cm ²]	1.00
psPDn+ [W/m ²]	0.861
psPDtot+ [W/m ²]	0.948
psPDmod+ [W/m ²]	1.14
E _{max} [V/m]	31.6
Power Drift [dB]	-5.85



Measurement Report for 16Z90SP, SCREEN, U-NII-7, UID 10755 AAC, Channel 143 (6665.0MHz)

Device under Test Properties

Model, Manufacturer	Dimensions [mm]	IMEI	DUT Type
, 16Z90SP	360.0 x 250.0 x 10.0		Laptop

Exposure Conditions

Phantom Section	Position, Test Distance [mm]	Band	Group, UID	Frequency [MHz], Channel Number	Conversion Factor
5G Air	SCREEN, 2.00	U-NII-7	WLAN, 10755-AAC	6665.0, 143	1.0

Hardware Setup

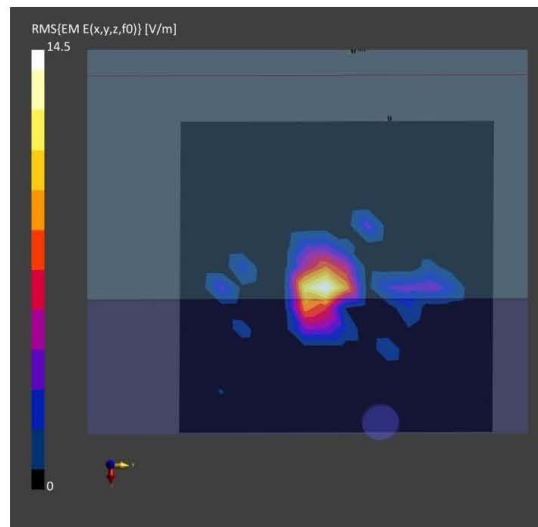
Phantom	Medium	Probe, Calibration Date	DAE, Calibration Date
mmWave- 1059	Air---	EUmmWV4 - SN9544_F1-55GHz, 2023-04-19	DAE4 Sn1337, 2023-03-31

Scan Setup

	5G Scan
Grid Extents [mm]	120.0 x 120.0
Grid Steps [lambda]	0.25 x 0.25
Sensor Surface [mm]	2.0
MAIA	N/A

Measurement Results

	5G Scan
Date	2023-10-27
Avg. Area [cm ²]	1.00
psPDn+ [W/m ²]	0.119
psPDtot+ [W/m ²]	0.190
psPDmod+ [W/m ²]	0.222
E _{max} [V/m]	14.5
Power Drift [dB]	0.93



Measurement Report for 16Z90SP, SCREEN, U-NII-8, UID 10755 AAC, Channel 207 (6985.0MHz)

Device under Test Properties

Model, Manufacturer	Dimensions [mm]	IMEI	DUT Type
, 16Z90SP	360.0 x 250.0 x 10.0		Laptop

Exposure Conditions

Phantom Section	Position, Test Distance [mm]	Band	Group, UID	Frequency [MHz], Channel Number	Conversion Factor
5G Air	SCREEN, 2.00	U-NII-8	WLAN, 10755-AAC	6985.0, 207	1.0

Hardware Setup

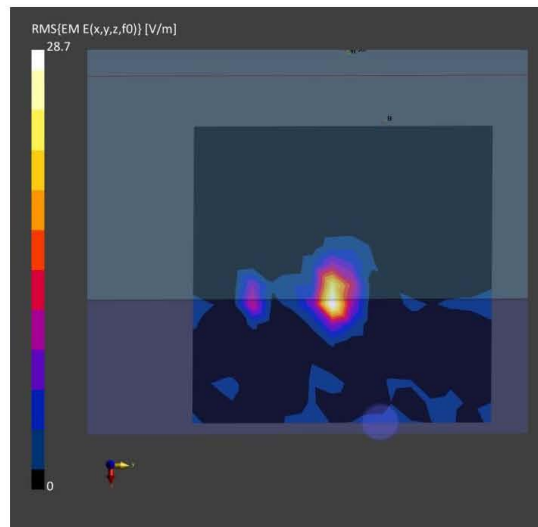
Phantom	Medium	Probe, Calibration Date	DAE, Calibration Date
mmWave- 1059	Air---	EUmmWV4 - SN9544_F1-55GHz, 2023-04-19	DAE4 Sn1337, 2023-03-31

Scan Setup

	5G Scan
Grid Extents [mm]	120.0 x 120.0
Grid Steps [lambda]	0.25 x 0.25
Sensor Surface [mm]	2.0
MAIA	N/A

Measurement Results

	5G Scan
Date	2023-10-27
Avg. Area [cm ²]	1.00
psPDn+ [W/m ²]	0.471
psPDtot+ [W/m ²]	0.646
psPDmod+ [W/m ²]	0.772
E _{max} [V/m]	28.7
Power Drift [dB]	-0.42



Test SKU: SKU #1 (with LUXSHARE-ICT Antenna)
Antenna-AUX

Measurement Report for 16Z90SP, SCREEN, U-NII-5, UID 10755 AAC, Channel 15 (6025.0MHz)

Device under Test Properties

Model, Manufacturer	Dimensions [mm]	IMEI	DUT Type
, 16Z90SP	360.0 x 250.0 x 10.0		Laptop

Exposure Conditions

Phantom Section	Position, Test Distance [mm]	Band	Group, UID	Frequency [MHz], Channel Number	Conversion Factor
5G Air	SCREEN, 2.00	U-NII-5	WLAN, 10755-AAC	6025.0, 15	1.0

Hardware Setup

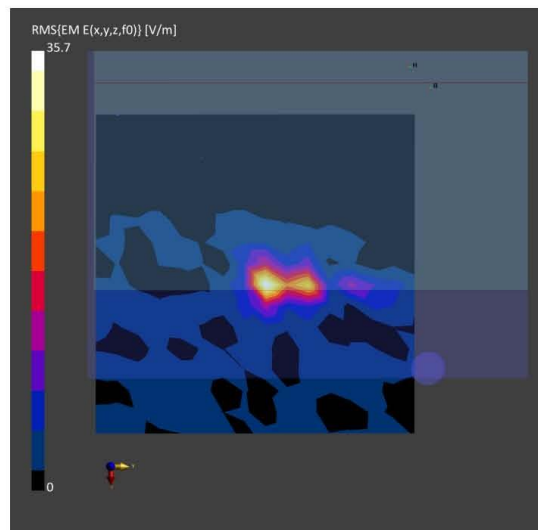
Phantom	Medium	Probe, Calibration Date	DAE, Calibration Date
mmWave- 1059	Air---	EUmmWV4 - SN9544_F1-55GHz, 2023-04-19	DAE4 Sn1337, 2023-03-31

Scan Setup

	5G Scan
Grid Extents [mm]	120.0 x 120.0
Grid Steps [lambda]	0.25 x 0.25
Sensor Surface [mm]	2.0
MAIA	N/A

Measurement Results

	5G Scan
Date	2023-10-27
Avg. Area [cm ²]	1.00
psPDn+ [W/m ²]	0.853
psPDtot+ [W/m ²]	1.09
psPDmod+ [W/m ²]	1.34
E _{max} [V/m]	35.7
Power Drift [dB]	2.52



Measurement Report for 16Z90SP, SCREEN, U-NII-5, UID 10755 AAC, Channel 47 (6185.0MHz)

Device under Test Properties

Model, Manufacturer	Dimensions [mm]	IMEI	DUT Type
, 16Z90SP	360.0 x 250.0 x 10.0		Laptop

Exposure Conditions

Phantom Section	Position, Test Distance [mm]	Band	Group, UID	Frequency [MHz], Channel Number	Conversion Factor
5G Air	SCREEN, 2.00	U-NII-5	WLAN, 10755-AAC	6185.0, 47	1.0

Hardware Setup

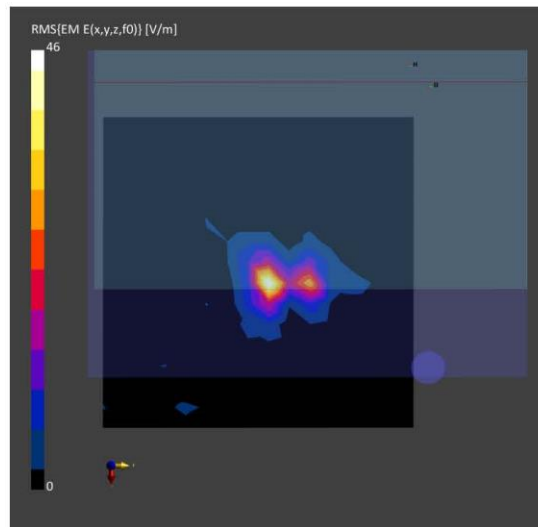
Phantom	Medium	Probe, Calibration Date	DAE, Calibration Date
mmWave- 1059	Air--	EUmmWV4 - SN9544_F1-55GHz, 2023-04-19	DAE4 Sn1337, 2023-03-31

Scan Setup

	5G Scan
Grid Extents [mm]	120.0 x 120.0
Grid Steps [lambda]	0.25 x 0.25
Sensor Surface [mm]	2.0
MAIA	N/A

Measurement Results

	5G Scan
Date	2023-10-27
Avg. Area [cm ²]	1.00
psPDn+ [W/m ²]	1.21
psPDtot+ [W/m ²]	1.38
psPDmod+ [W/m ²]	1.83
E _{max} [V/m]	46.0
Power Drift [dB]	0.30



Measurement Report for 16Z90SP, SCREEN, U-NII-6, UID 10755 AAC, Channel 111 (6505.0MHz)

Device under Test Properties

Model, Manufacturer	Dimensions [mm]	IMEI	DUT Type
, 16Z90SP	360.0 x 250.0 x 10.0		Laptop

Exposure Conditions

Phantom Section	Position, Test Distance [mm]	Band	Group, UID	Frequency [MHz], Channel Number	Conversion Factor
5G Air	SCREEN, 2.00	U-NII-6	WLAN, 10755-AAC	6505.0, 111	1.0

Hardware Setup

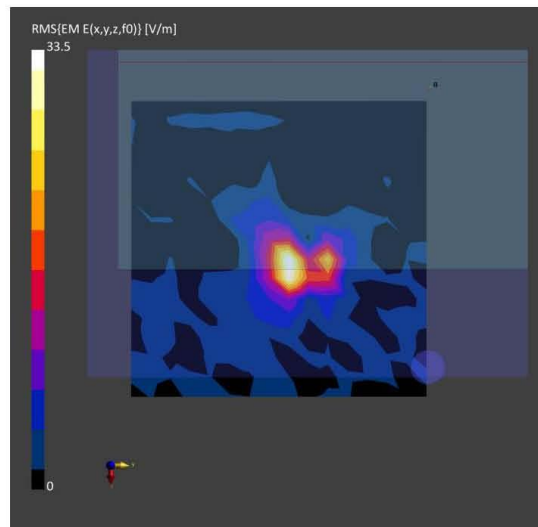
Phantom	Medium	Probe, Calibration Date	DAE, Calibration Date
mmWave- 1059	Air---	EUmmWV4 - SN9544_F1-55GHz, 2023-04-19	DAE4 Sn1337, 2023-03-31

Scan Setup

	5G Scan
Grid Extents [mm]	120.0 x 120.0
Grid Steps [lambda]	0.25 x 0.25
Sensor Surface [mm]	2.0
MAIA	N/A

Measurement Results

	5G Scan
Date	2023-10-27
Avg. Area [cm ²]	1.00
psPDn+ [W/m ²]	0.826
psPDtot+ [W/m ²]	0.905
psPDmod+ [W/m ²]	1.13
E _{max} [V/m]	33.5
Power Drift [dB]	0.19



Measurement Report for 16Z90SP, SCREEN, U-NII-7, UID 10755 AAC, Channel 143 (6665.0MHz)

Device under Test Properties

Model, Manufacturer	Dimensions [mm]	IMEI	DUT Type
, 16Z90SP	360.0 x 250.0 x 10.0		Laptop

Exposure Conditions

Phantom Section	Position, Test Distance [mm]	Band	Group, UID	Frequency [MHz], Channel Number	Conversion Factor
5G Air	SCREEN, 2.00	U-NII-7	WLAN, 10755-AAC	6665.0, 143	1.0

Hardware Setup

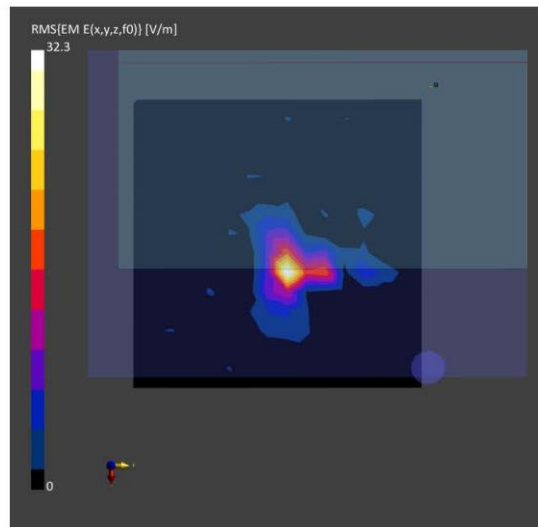
Phantom	Medium	Probe, Calibration Date	DAE, Calibration Date
mmWave- 1059	Air--	EUmmWV4 - SN9544_F1-55GHz, 2023-04-19	DAE4 Sn1337, 2023-03-31

Scan Setup

	5G Scan
Grid Extents [mm]	120.0 x 120.0
Grid Steps [lambda]	0.25 x 0.25
Sensor Surface [mm]	2.0
MAIA	N/A

Measurement Results

	5G Scan
Date	2023-10-27
Avg. Area [cm ²]	1.00
psPDn+ [W/m ²]	0.722
psPDtot+ [W/m ²]	0.824
psPDmod+ [W/m ²]	0.895
E _{max} [V/m]	32.3
Power Drift [dB]	0.11



Measurement Report for 16Z90SP, SCREEN, U-NII-8, UID 10755 AAC, Channel 207 (6985.0MHz)

Device under Test Properties

Model, Manufacturer	Dimensions [mm]	IMEI	DUT Type
, 16Z90SP	360.0 x 250.0 x 10.0		Laptop

Exposure Conditions

Phantom Section	Position, Test Distance [mm]	Band	Group, UID	Frequency [MHz], Channel Number	Conversion Factor
5G Air	SCREEN, 2.00	U-NII-8	WLAN, 10755-AAC	6985.0, 207	1.0

Hardware Setup

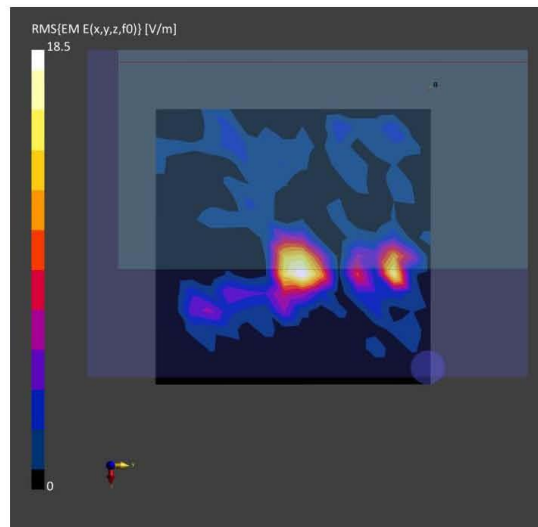
Phantom	Medium	Probe, Calibration Date	DAE, Calibration Date
mmWave- 1059	Air---	EUmmWV4 - SN9544_F1-55GHz, 2023-04-19	DAE4 Sn1337, 2023-03-31

Scan Setup

	5G Scan
Grid Extents [mm]	120.0 x 120.0
Grid Steps [lambda]	0.25 x 0.25
Sensor Surface [mm]	2.0
MAIA	N/A

Measurement Results

	5G Scan
Date	2023-10-27
Avg. Area [cm ²]	1.00
psPDn+ [W/m ²]	0.246
psPDtot+ [W/m ²]	0.279
psPDmod+ [W/m ²]	0.386
E _{max} [V/m]	18.5
Power Drift [dB]	-1.00



Antenna-Main

Measurement Report for 16Z90SP, SCREEN, U-NII-5, UID 10755 AAC, Channel 15 (6025.0MHz)

Device under Test Properties

Model, Manufacturer	Dimensions [mm]	IMEI	DUT Type
, 16Z90SP	360.0 x 250.0 x 10.0		Laptop

Exposure Conditions

Phantom Section	Position, Test Distance [mm]	Band	Group, UID	Frequency [MHz], Channel Number	Conversion Factor
5G Air	SCREEN, 2.00	U-NII-5	WLAN, 10755-AAC	6025.0, 15	1.0

Hardware Setup

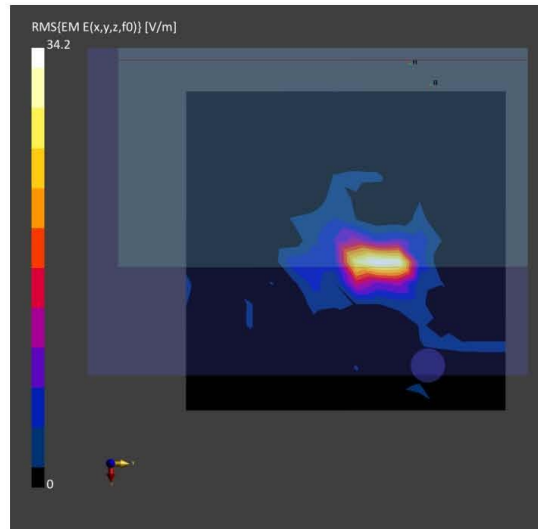
Phantom	Medium	Probe, Calibration Date	DAE, Calibration Date
mmWave- 1059	Air---	EUmmWV4 - SN9544_F1-55GHz, 2023-04-19	DAE4 Sn1337, 2023-03-31

Scan Setup

	5G Scan
Grid Extents [mm]	120.0 x 120.0
Grid Steps [lambda]	0.25 x 0.25
Sensor Surface [mm]	2.0
MAIA	N/A

Measurement Results

	5G Scan
Date	2023-10-27
Avg. Area [cm ²]	1.00
psPDn+ [W/m ²]	1.24
psPDtot+ [W/m ²]	1.46
psPDmod+ [W/m ²]	1.77
E _{max} [V/m]	34.2
Power Drift [dB]	-0.53



Measurement Report for 16Z90SP, SCREEN, U-NII-5, UID 10755 AAC, Channel 47 (6185.0MHz)

Device under Test Properties

Model, Manufacturer	Dimensions [mm]	IMEI	DUT Type
, 16Z90SP	360.0 x 250.0 x 10.0		Laptop

Exposure Conditions

Phantom Section	Position, Test Distance [mm]	Band	Group, UID	Frequency [MHz], Channel Number	Conversion Factor
5G Air	SCREEN, 2.00	U-NII-5	WLAN, 10755-AAC	6185.0, 47	1.0

Hardware Setup

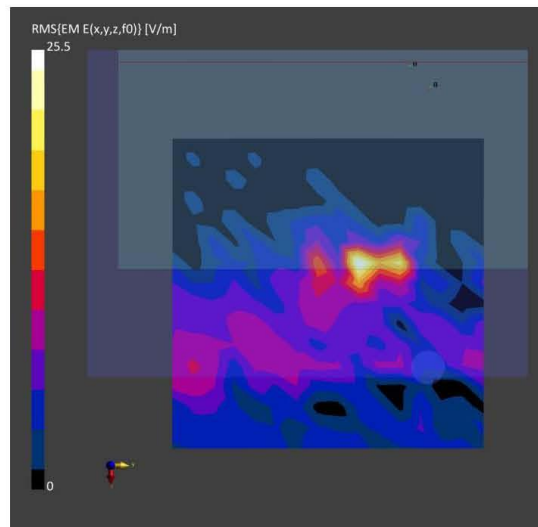
Phantom	Medium	Probe, Calibration Date	DAE, Calibration Date
mmWave- 1059	Air---	EUmmWV4 - SN9544_F1-55GHz, 2023-04-19	DAE4 Sn1337, 2023-03-31

Scan Setup

	5G Scan
Grid Extents [mm]	120.0 x 120.0
Grid Steps [lambda]	0.25 x 0.25
Sensor Surface [mm]	2.0
MAIA	N/A

Measurement Results

	5G Scan
Date	2023-10-27
Avg. Area [cm ²]	1.00
psPDn+ [W/m ²]	0.367
psPDtot+ [W/m ²]	0.451
psPDmod+ [W/m ²]	1.07
E _{max} [V/m]	25.5
Power Drift [dB]	6.08



Measurement Report for 16Z90SP, SCREEN, U-NII-6, UID 10755 AAC, Channel 111 (6505.0MHz)

Device under Test Properties

Model, Manufacturer	Dimensions [mm]	IMEI	DUT Type
, 16Z90SP	360.0 x 250.0 x 10.0		Laptop

Exposure Conditions

Phantom Section	Position, Test Distance [mm]	Band	Group, UID	Frequency [MHz], Channel Number	Conversion Factor
5G Air	SCREEN, 2.00	U-NII-6	WLAN, 10755-AAC	6505.0, 111	1.0

Hardware Setup

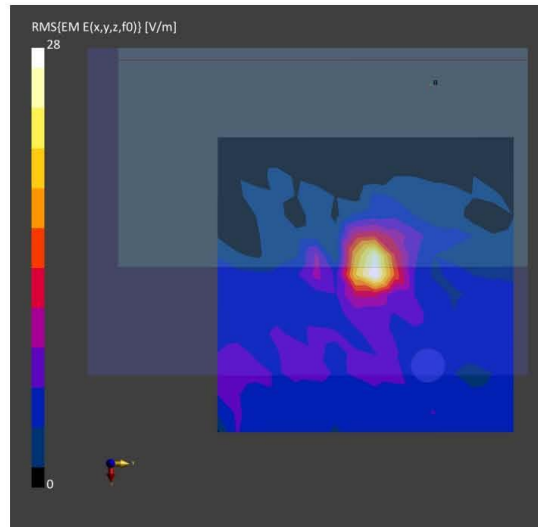
Phantom	Medium	Probe, Calibration Date	DAE, Calibration Date
mmWave- 1059	Air---	EUmmWV4 - SN9544_F1-55GHz, 2023-04-19	DAE4 Sn1337, 2023-03-31

Scan Setup

	5G Scan
Grid Extents [mm]	120.0 x 120.0
Grid Steps [lambda]	0.25 x 0.25
Sensor Surface [mm]	2.0
MAIA	N/A

Measurement Results

	5G Scan
Date	2023-10-27
Avg. Area [cm ²]	1.00
psPDn+ [W/m ²]	0.687
psPDtot+ [W/m ²]	0.754
psPDmod+ [W/m ²]	0.931
E _{max} [V/m]	28.0
Power Drift [dB]	-0.05



Measurement Report for 16Z90SP, SCREEN, U-NII-7, UID 10755 AAC, Channel 143 (6665.0MHz)

Device under Test Properties

Model, Manufacturer	Dimensions [mm]	IMEI	DUT Type
, 16Z90SP	360.0 x 250.0 x 10.0		Laptop

Exposure Conditions

Phantom Section	Position, Test Distance [mm]	Band	Group, UID	Frequency [MHz], Channel Number	Conversion Factor
5G Air	SCREEN, 2.00	U-NII-7	WLAN, 10755-AAC	6665.0, 143	1.0

Hardware Setup

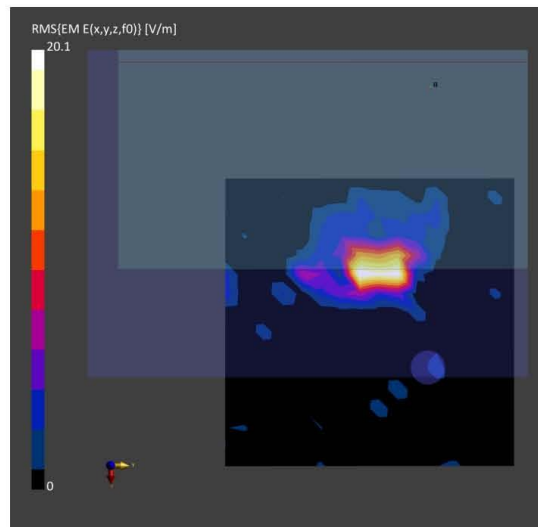
Phantom	Medium	Probe, Calibration Date	DAE, Calibration Date
mmWave- 1059	Air---	EUmmWV4 - SN9544_F1-55GHz, 2023-04-19	DAE4 Sn1337, 2023-03-31

Scan Setup

	5G Scan
Grid Extents [mm]	120.0 x 120.0
Grid Steps [lambda]	0.25 x 0.25
Sensor Surface [mm]	2.0
MAIA	N/A

Measurement Results

	5G Scan
Date	2023-10-27
Avg. Area [cm ²]	1.00
psPDn+ [W/m ²]	0.389
psPDtot+ [W/m ²]	0.444
psPDmod+ [W/m ²]	0.462
E _{max} [V/m]	20.1
Power Drift [dB]	n/a



Measurement Report for 16Z90SP, SCREEN, U-NII-8, UID 10755 AAC, Channel 207 (6985.0MHz)

Device under Test Properties

Model, Manufacturer	Dimensions [mm]	IMEI	DUT Type
, 16Z90SP	360.0 x 250.0 x 10.0		Laptop

Exposure Conditions

Phantom Section	Position, Test Distance [mm]	Band	Group, UID	Frequency [MHz], Channel Number	Conversion Factor
5G Air	SCREEN, 2.00	U-NII-8	WLAN, 10755-AAC	6985.0, 207	1.0

Hardware Setup

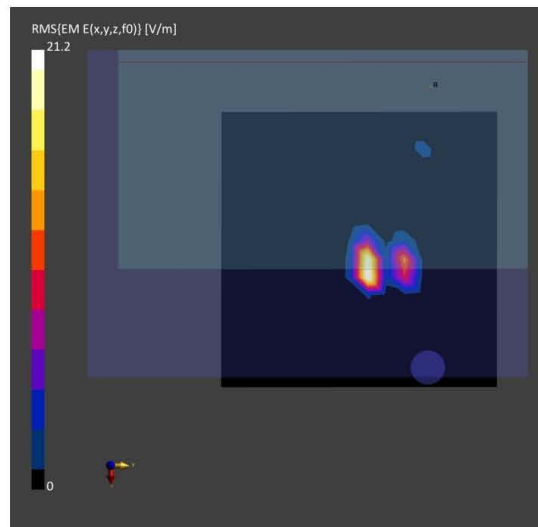
Phantom	Medium	Probe, Calibration Date	DAE, Calibration Date
mmWave- 1059	Air---	EUmmWV4 - SN9544_F1-55GHz, 2023-04-19	DAE4 Sn1337, 2023-03-31

Scan Setup

	5G Scan
Grid Extents [mm]	120.0 x 120.0
Grid Steps [lambda]	0.25 x 0.25
Sensor Surface [mm]	2.0
MAIA	N/A

Measurement Results

	5G Scan
Date	2023-10-27
Avg. Area [cm ²]	1.00
psPDn+ [W/m ²]	0.193
psPDtot+ [W/m ²]	0.391
psPDmod+ [W/m ²]	0.445
E _{max} [V/m]	21.2
Power Drift [dB]	0.38



● **Worst Case For Power Density Test Result**
Test SKU: SKU #2 (with INPAQ Antenna)
Antenna-AUX

Measurement Report for 16Z90SP, SCREEN, U-NII-6, UID 10755 AAC, Channel 111 (6505.0MHz)

Device under Test Properties

Model, Manufacturer	Dimensions [mm]	IMEI	DUT Type
, 16Z90SP	360.0 x 250.0 x 30.0		Laptop

Exposure Conditions

Phantom Section	Position, Test Distance [mm]	Band	Group, UID	Frequency [MHz], Channel Number	Conversion Factor
5G Air	SCREEN, 2.00	U-NII-6	WLAN, 10755-AAC	6505.0, 111	1.0

Hardware Setup

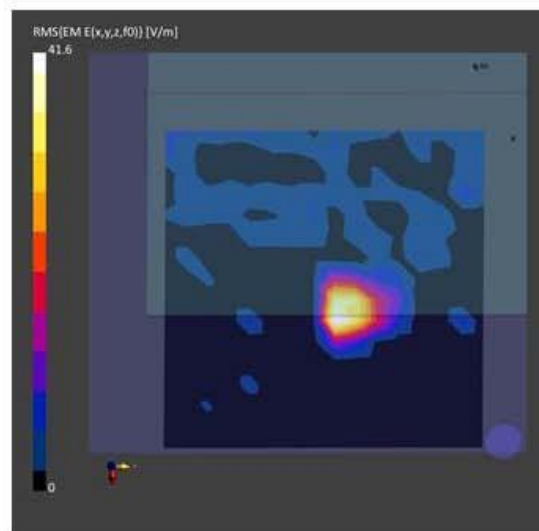
Phantom	Medium	Probe, Calibration Date	DAE, Calibration Date
mmWave- 1059	Air--	EUmmWV4 - SN9544_FJ-55GHz, 2023-04-19	DAE4.Sn1337, 2023-03-31

Scan Setup

	5G Scan
Grid Extents [mm]	120.0 x 120.0
Grid Steps [lambda]	0.25 x 0.25
Sensor Surface [mm]	2.0
MAIA	N/A

Measurement Results

	5G Scan
Date	2023-10-27
Avg. Area [cm ²]	1.00
psPDn+ [W/m ²]	0.788
psPDtot+ [W/m ²]	0.975
psPDmod+ [W/m ²]	1.51
E _{max} [V/m]	41.6
Power Drift [dB]	-1.15



Antenna-Main

Measurement Report for 16Z90SP, SCREEN, U-NII-6, UID 10755 AAC, Channel 111 (6505.0MHz)

Device under Test Properties

Model, Manufacturer	Dimensions [mm]	IMEI	DUT Type
16Z90SP	360.0 x 250.0 x 10.0		Laptop

Exposure Conditions

Phantom Section	Position, Test Distance [mm]	Band	Group, UID	Frequency [MHz], Channel Number	Conversion Factor
5G Air	SCREEN, 2.00	U-NII-6	WLAN, 10755-AAC	6505.0, 111	1.0

Hardware Setup

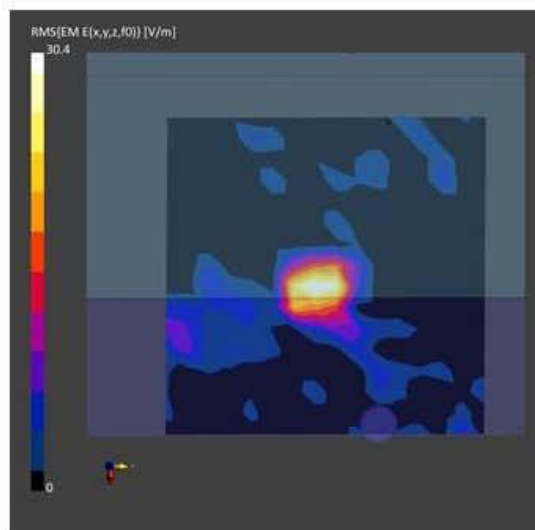
Phantom	Medium	Probe, Calibration Date	DAE, Calibration Date
mmWave- 1059	Air--	EUmmWV4 - SN9544_F1-55GHz, 2023-04-19	DAE4 Sn1337, 2023-03-31

Scan Setup

	5G Scan
Grid Extents [mm]	120.0 x 120.0
Grid Steps [lambda]	0.25 x 0.25
Sensor Surface [mm]	2.0
MAIA	N/A

Measurement Results

	5G Scan
Date	2023-10-27
Avg. Area [cm ²]	1.00
psPDn+ [W/m ²]	0.674
psPDtot+ [W/m ²]	0.755
psPDmod+ [W/m ²]	0.812
E _{rms} [V/m]	30.4
Power Drift [dB]	-0.10



Test SKU: SKU #2 (with LUXSHARE-ICT Antenna)
Antenna-AUX

Measurement Report for 16Z90SP, SCREEN, U-NII-5, UID 10755 AAC, Channel 15 (6025.0MHz)

Device under Test Properties

Model, Manufacturer	Dimensions [mm]	IMEI	DUT Type
, 16Z90SP	355.0 x 242.0 x 10.0		Laptop

Exposure Conditions

Phantom Section	Position, Test Distance [mm]	Band	Group, UID	Frequency [MHz], Channel Number	Conversion Factor
5G Air	SCREEN, 2.00	U-NII-5	WLAN, 10755-AAC	6025.0, 15	1.0

Hardware Setup

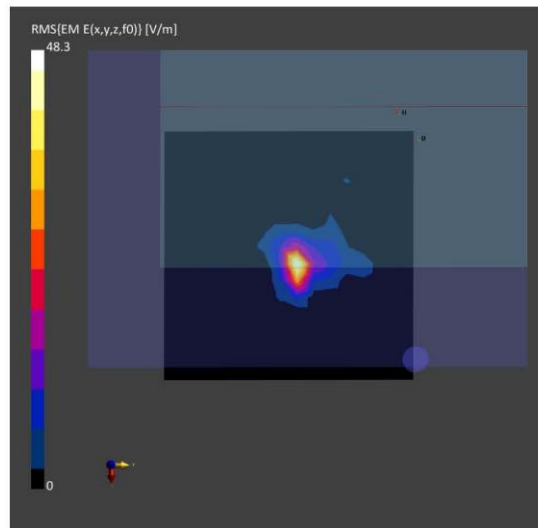
Phantom	Medium	Probe, Calibration Date	DAE, Calibration Date
mmWave- 1059	Air---	EUmmWV4 - SN9544_F1-55GHz, 2023-04-19	DAE4 Sn1337, 2023-03-31

Scan Setup

	5G Scan
Grid Extents [mm]	120.0 x 120.0
Grid Steps [lambda]	0.25 x 0.25
Sensor Surface [mm]	2.0
MAIA	N/A

Measurement Results

	5G Scan
Date	2023-10-27
Avg. Area [cm ²]	1.00
psPDn+ [W/m ²]	0.807
psPDtot+ [W/m ²]	1.34
psPDmod+ [W/m ²]	1.75
E _{max} [V/m]	48.3
Power Drift [dB]	0.27



Antenna-Main

Measurement Report for 16Z905P, SCREEN, U-NII-5, UID 10755 AAC, Channel 15 (6025.0MHz)

Device under Test Properties

Model, Manufacturer	Dimensions [mm]	IMEI	DUT Type
, 16Z905P	360.0 x 250.0 x 10.0		Laptop

Exposure Conditions

Phantom Section	Position, Test Distance [mm]	Band	Group, UID	Frequency [MHz], Channel Number	Conversion Factor
5G Air	SCREEN, 2.00	U-NII-5	WLAN, 10755-AAC	6025.0, 15	1.0

Hardware Setup

Phantom	Medium	Probe, Calibration Date	DAE, Calibration Date
mmWave- 1059	Air--	EUmmWV4 - SN9544_F1-55GHz, 2023-04-19	DAE4 Sn1337, 2023-03-31

Scan Setup

	5G Scan
Grid Extents [mm]	120.0 x 120.0
Grid Steps [lambda]	0.25 x 0.25
Sensor Surface [mm]	2.0
MAIA	N/A

Measurement Results

	5G Scan
Date	2023-10-27
Avg. Area [cm ²]	1.00
psPDn+ [W/m ²]	1.38
psPDtot+ [W/m ²]	1.40
psPDmod+ [W/m ²]	2.09
E _{max} [V/m]	44.7
Power Drift [dB]	-0.19

