

EUT Internal Photos

Figure 15
General Appearance, Internal View



Figure 16
Internal View (Removed Cover)

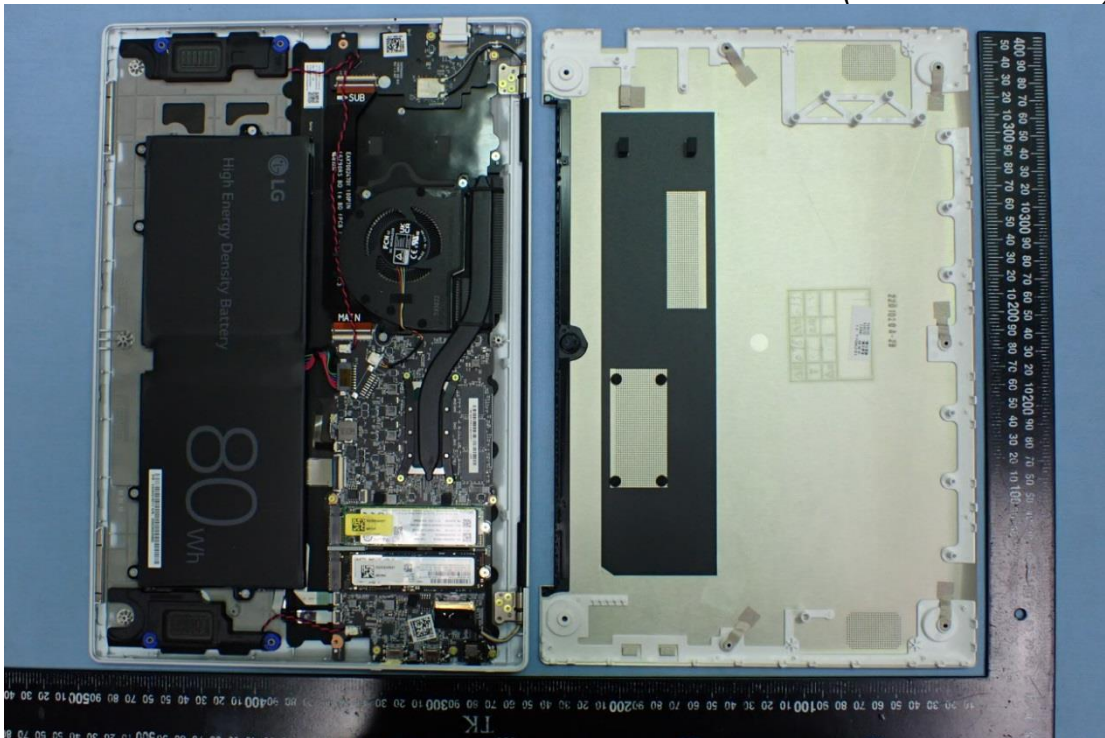


Figure 17
Internal View (Removed Components)

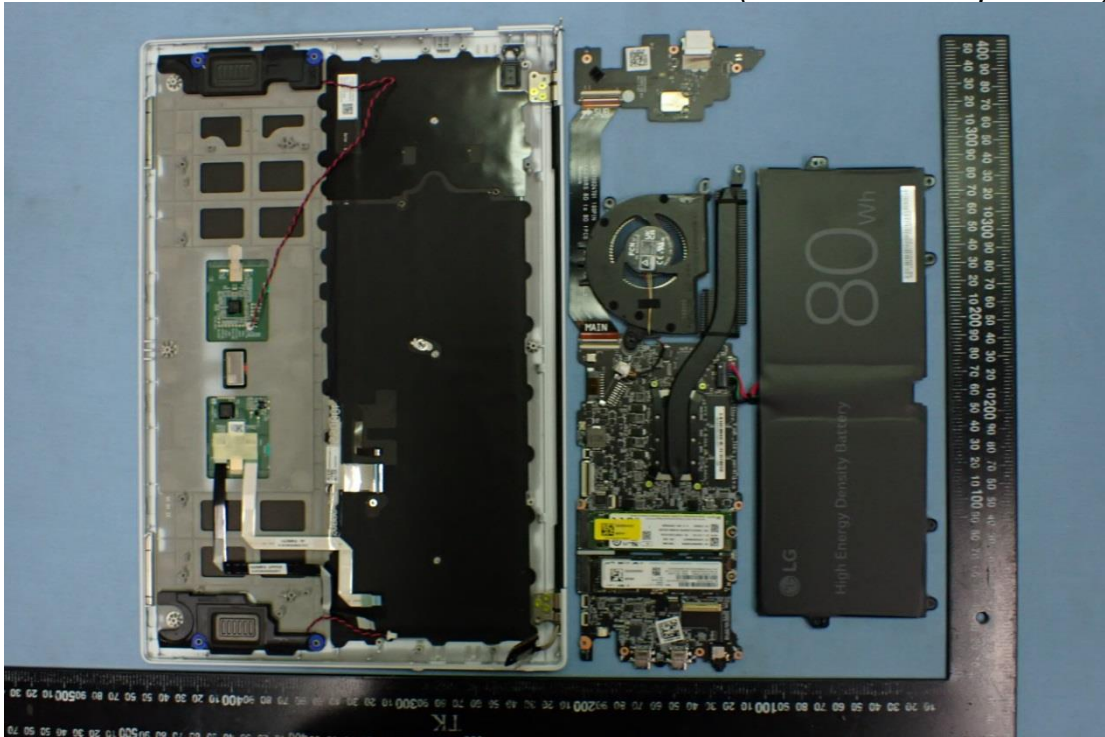


Figure 18
WLAN SUB Board, Front View

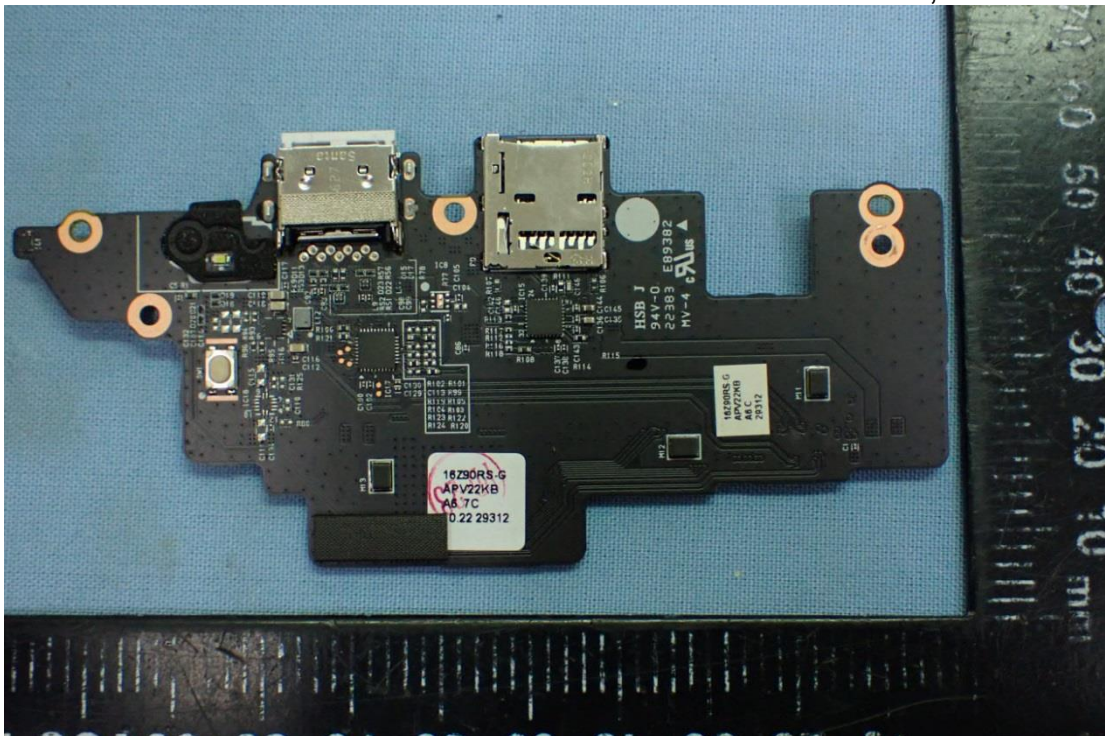


Figure 19
WLAN SUB Board, Back View

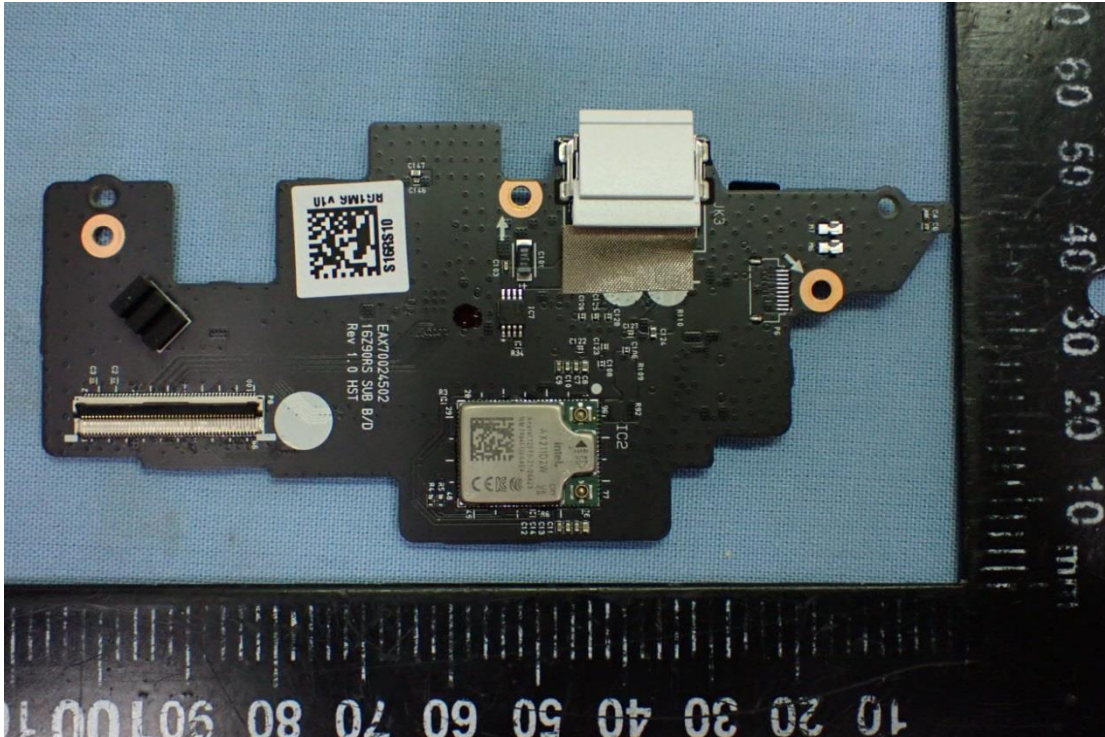


Figure 20
WLAN Combo Card, Front View



Figure 21
WLAN Combo Card, Without Shield and Back View

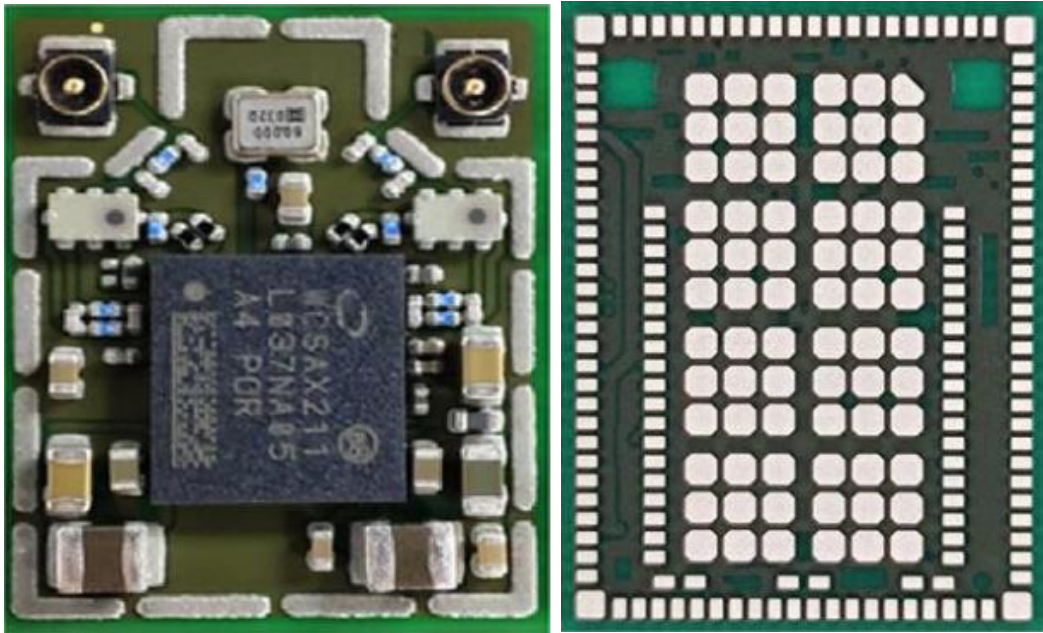


Figure 22
Battery Pack (80Wh), Front View

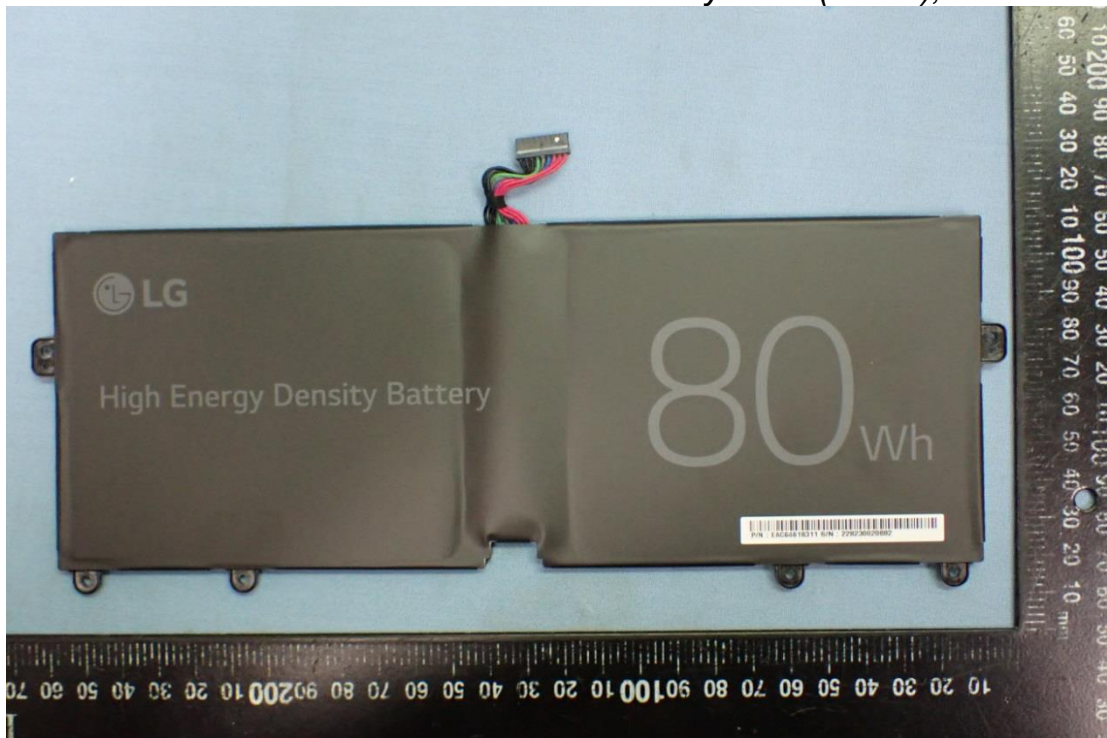


Figure 23
Battery Pack (80Wh), Back View

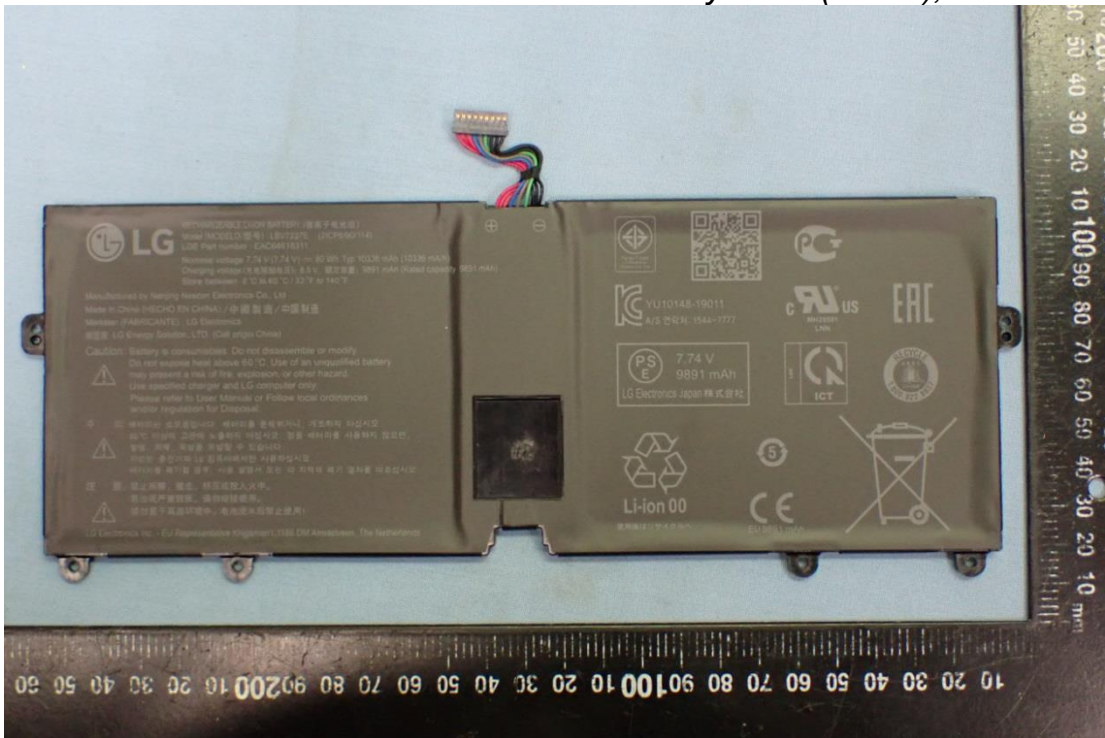


Figure 24
Battery Pack (80Wh), Label View

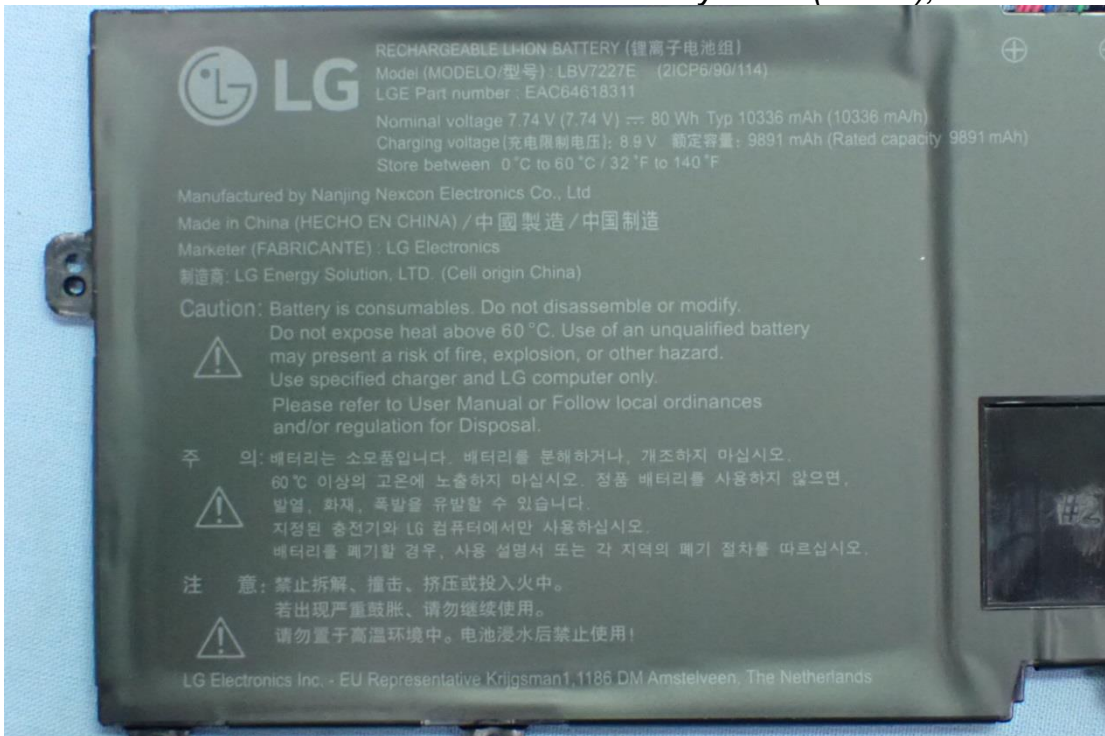


Figure 25
SSD, Samsung (256GB), Front View

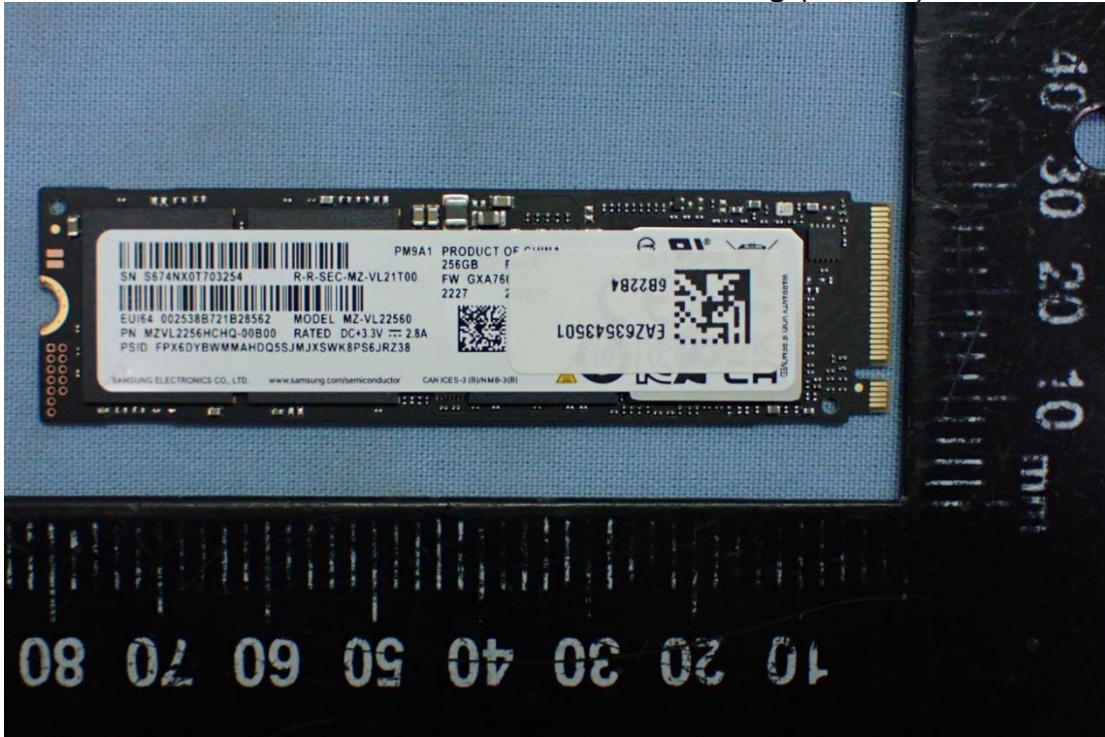


Figure 26
SSD, Samsung (256GB), Back View

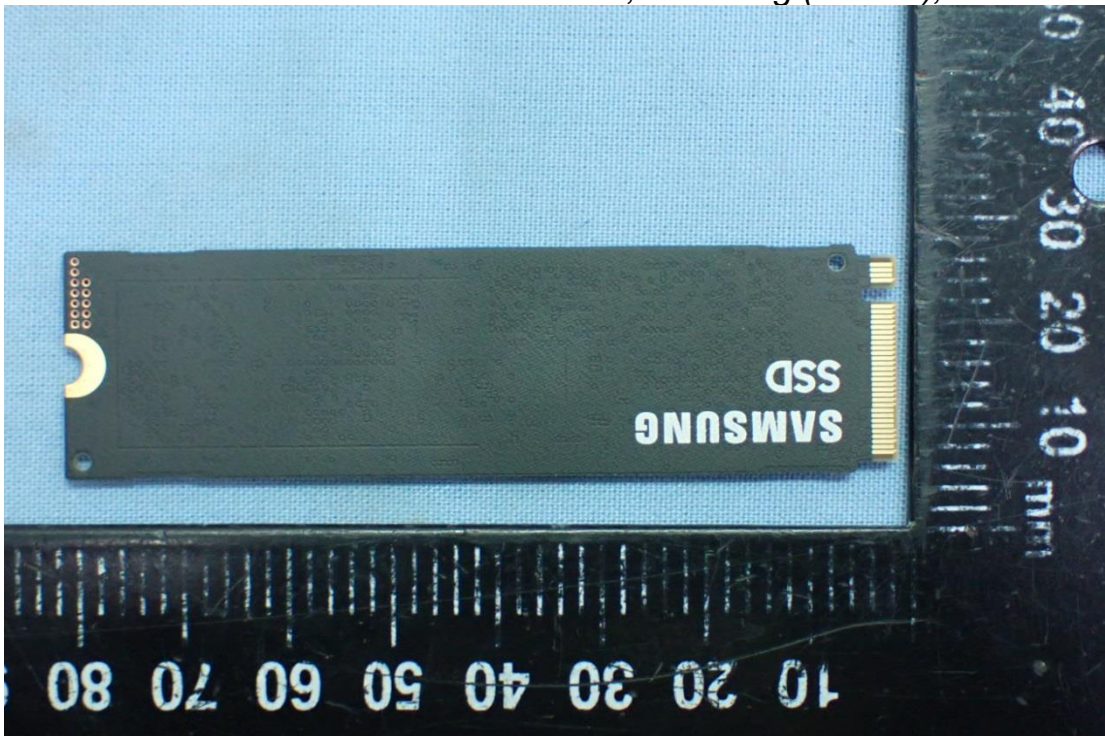


Figure 27
SSD, SK hynix (2TB), Front View



Figure 28
SSD, SK hynix (2TB), Back View

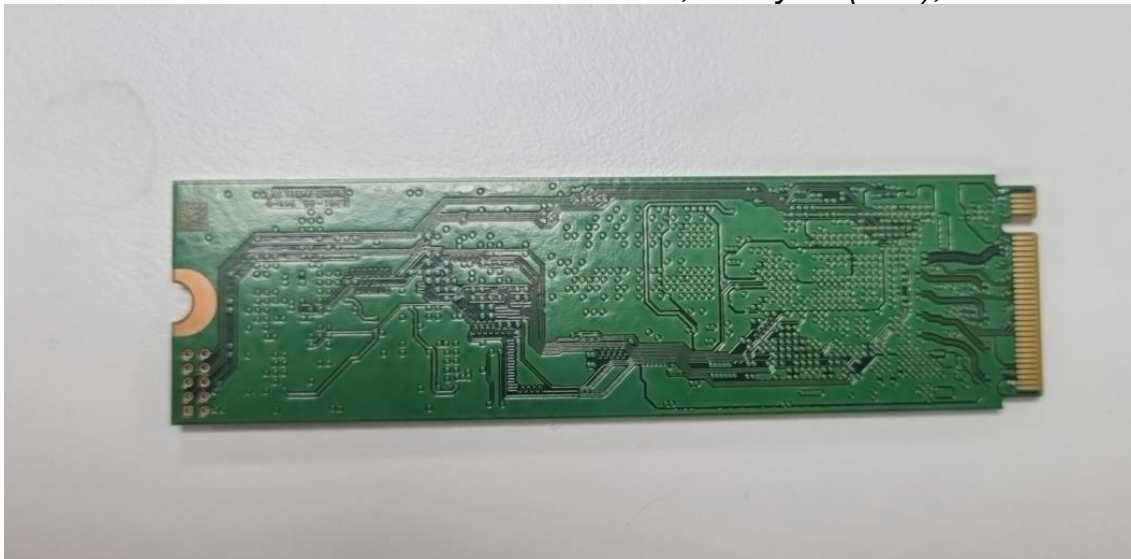


Figure 29
SSD, SKhynix (1TB), Front View

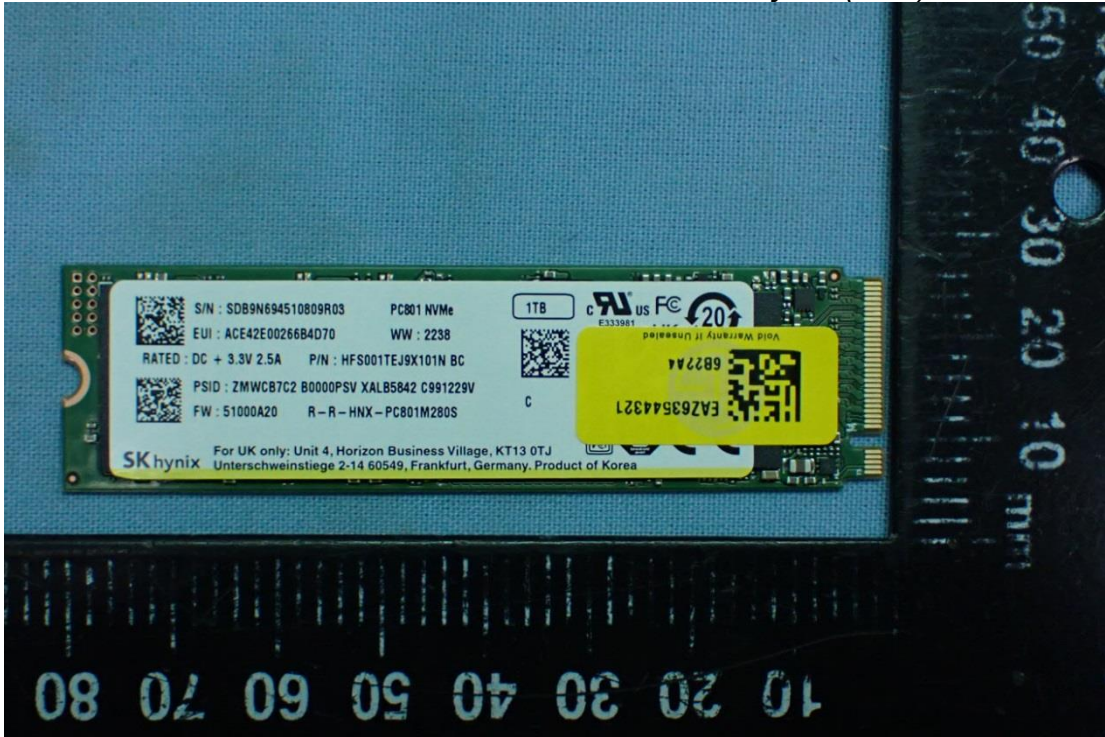


Figure 30
SSD, SKhynix (1TB), Front View

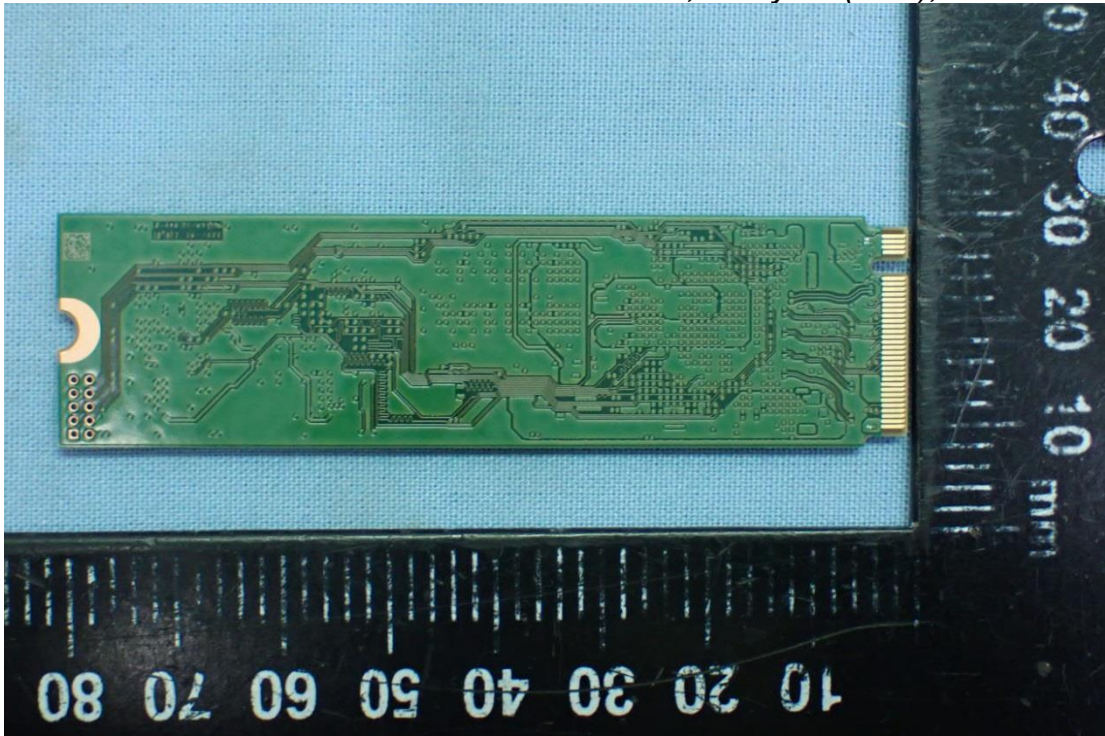


Figure 31
DC FAN

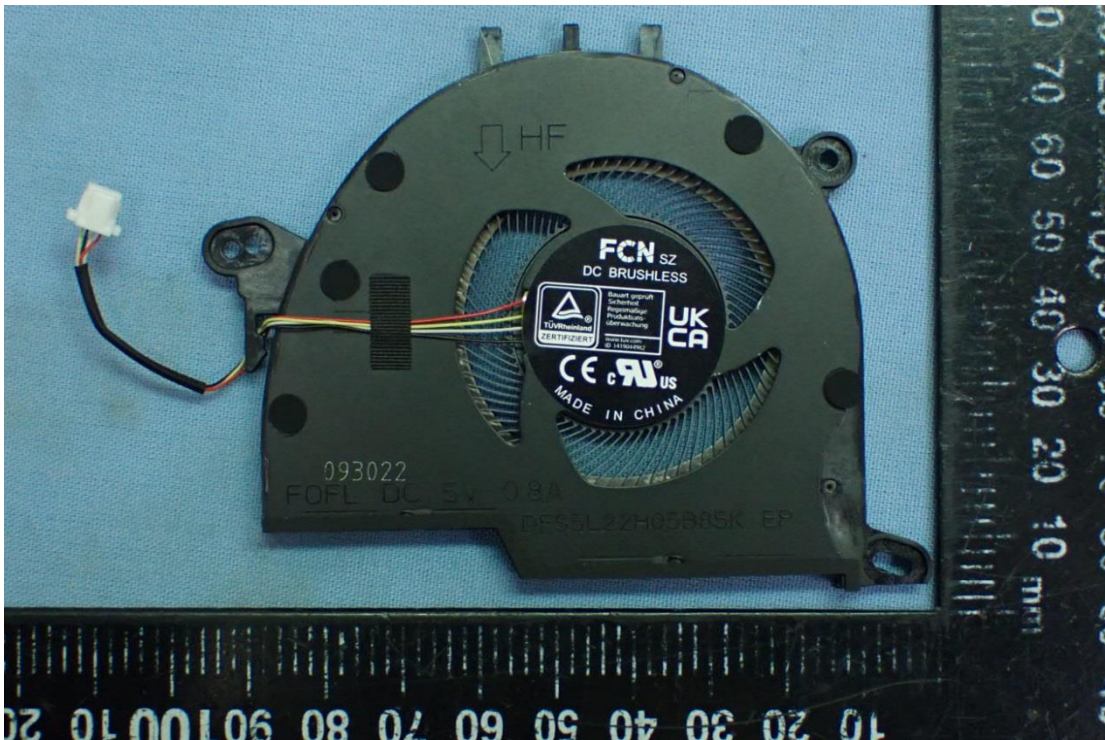


Figure 32
Main Board, Front View

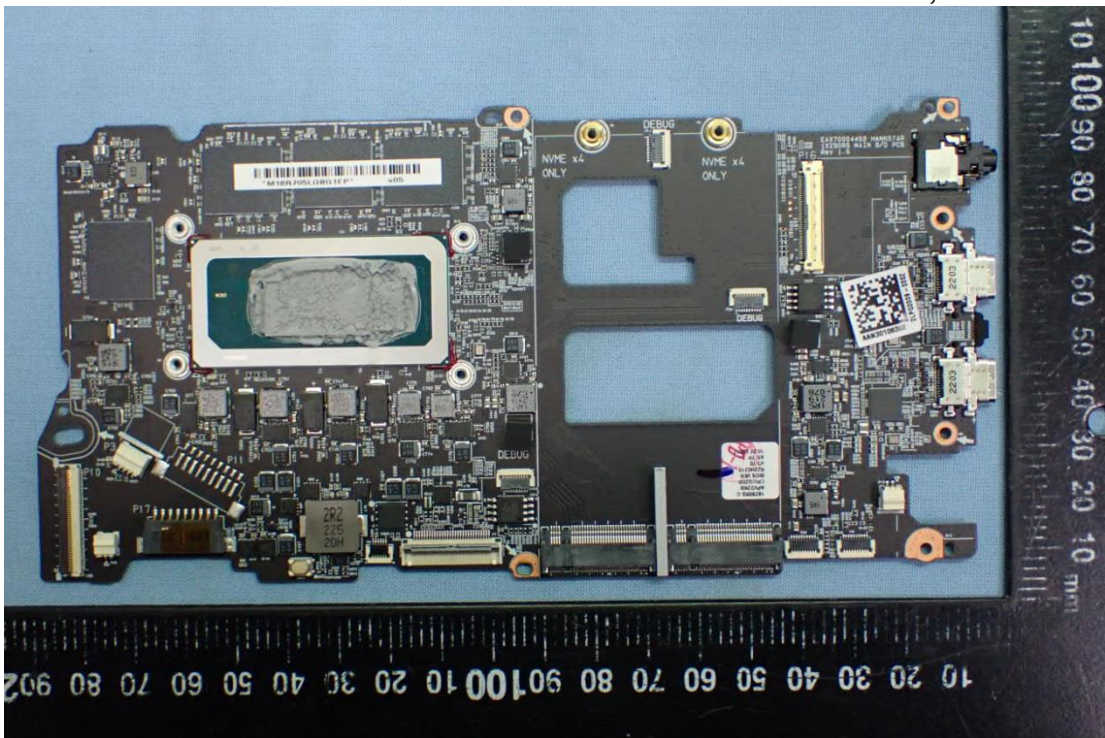


Figure 33
Main Board, Back View

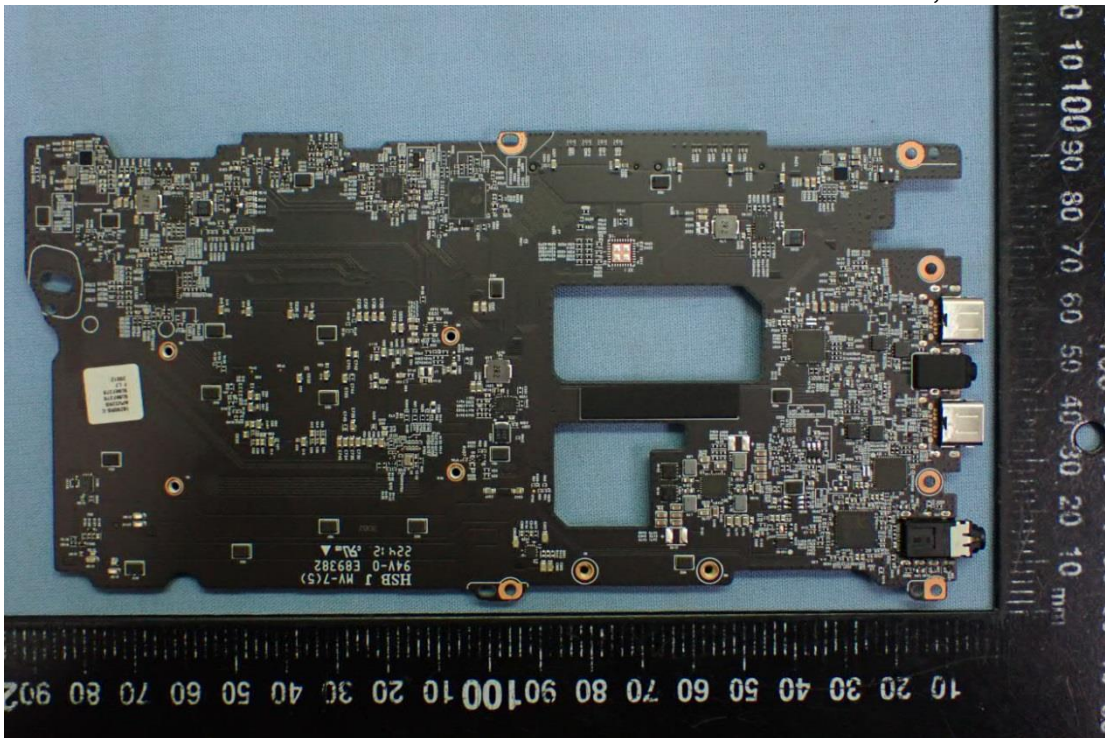


Figure 34
Internal View

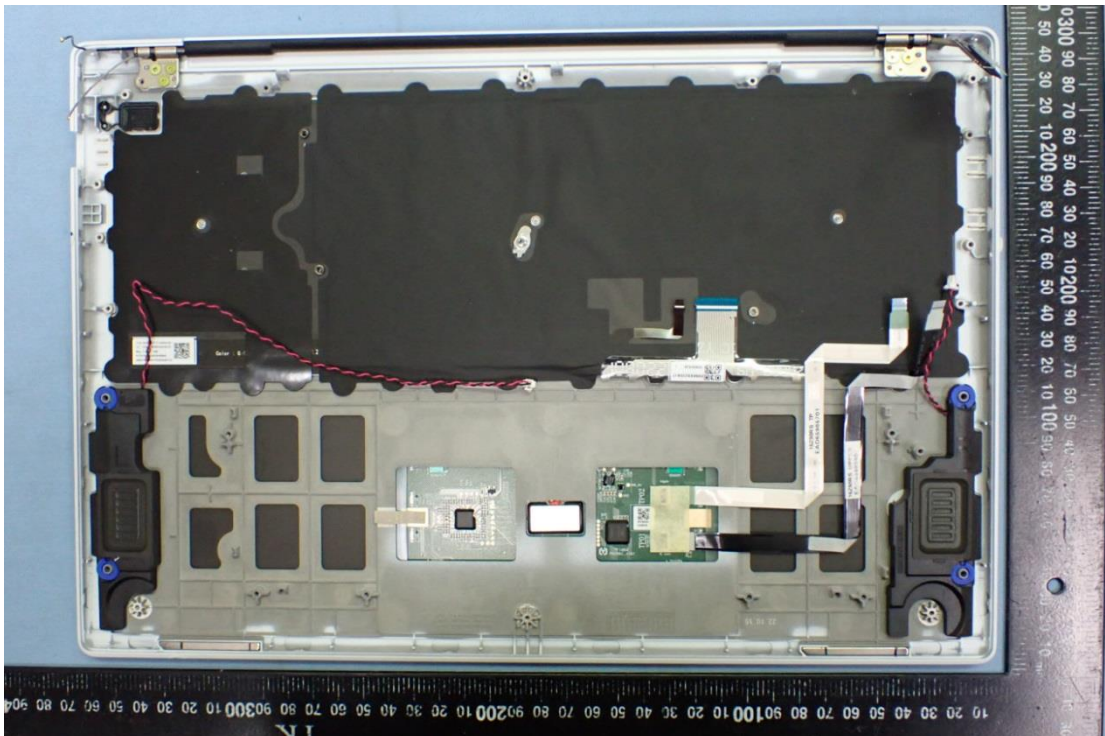


Figure 35
Touch Pad Board

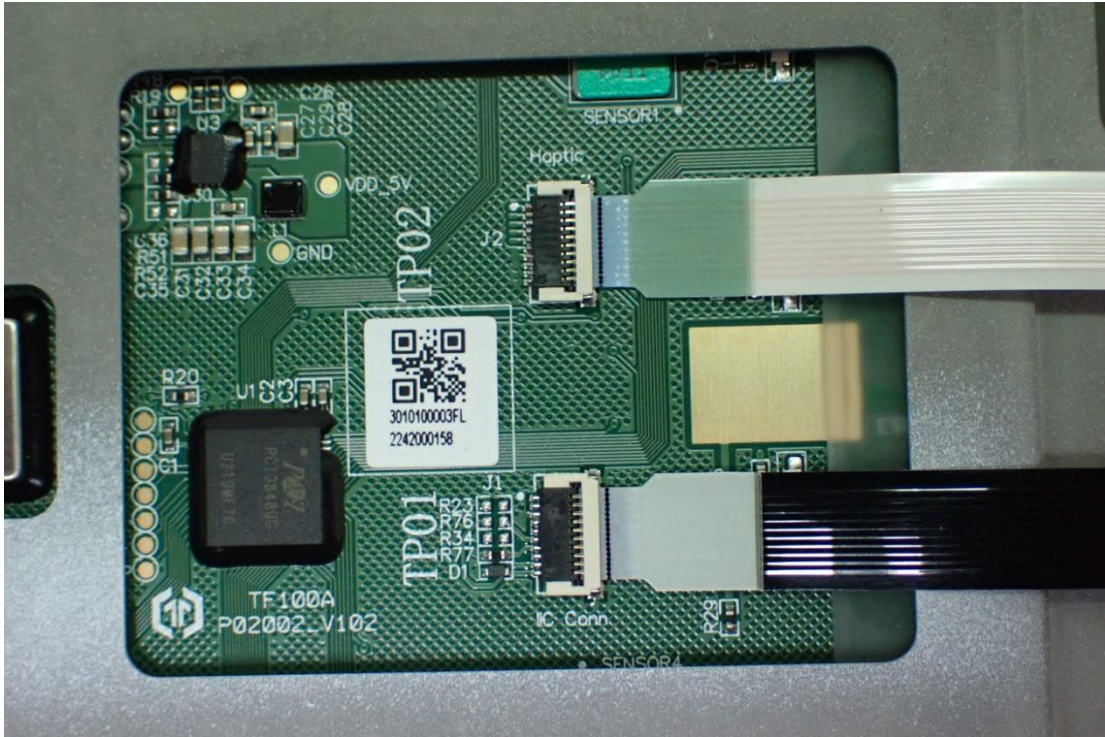


Figure 36
Internal Board

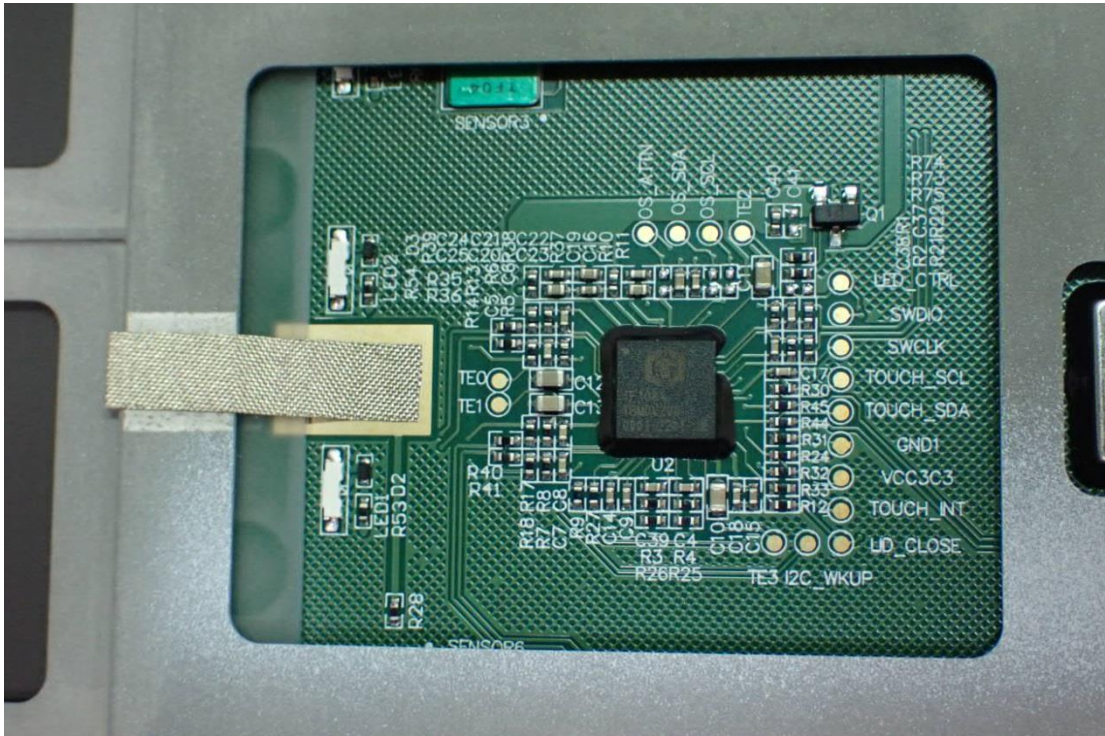


Figure 37
LCD Panel, Front View

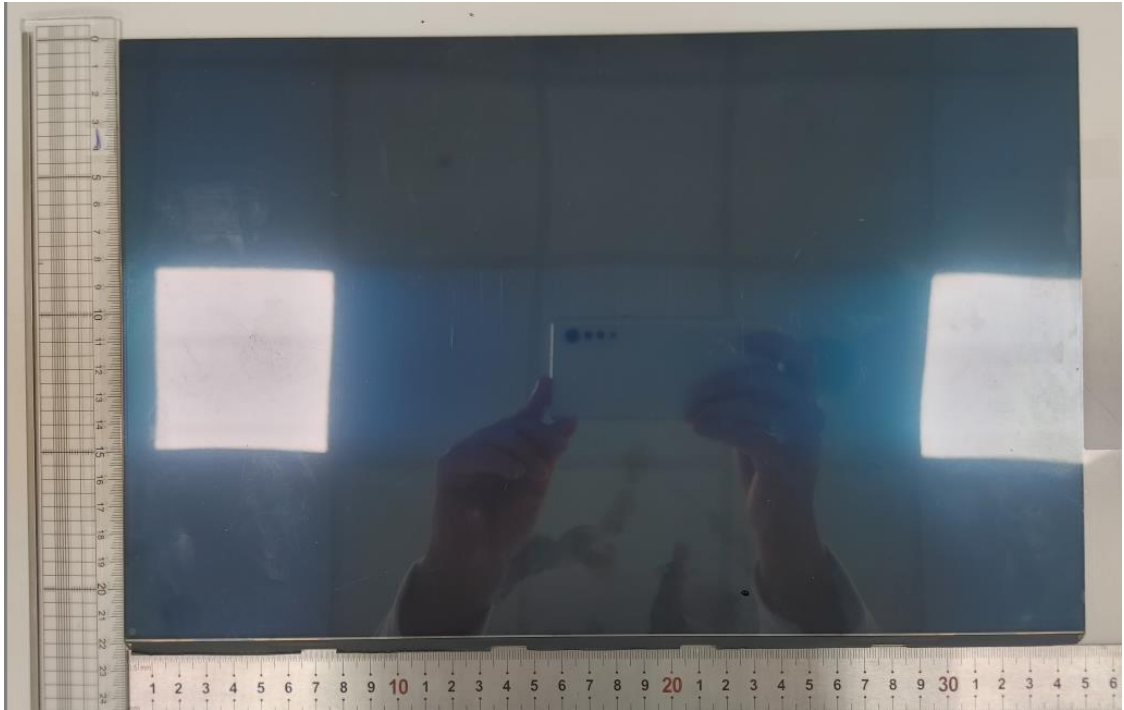


Figure 38
LCD Panel, Back & Label View

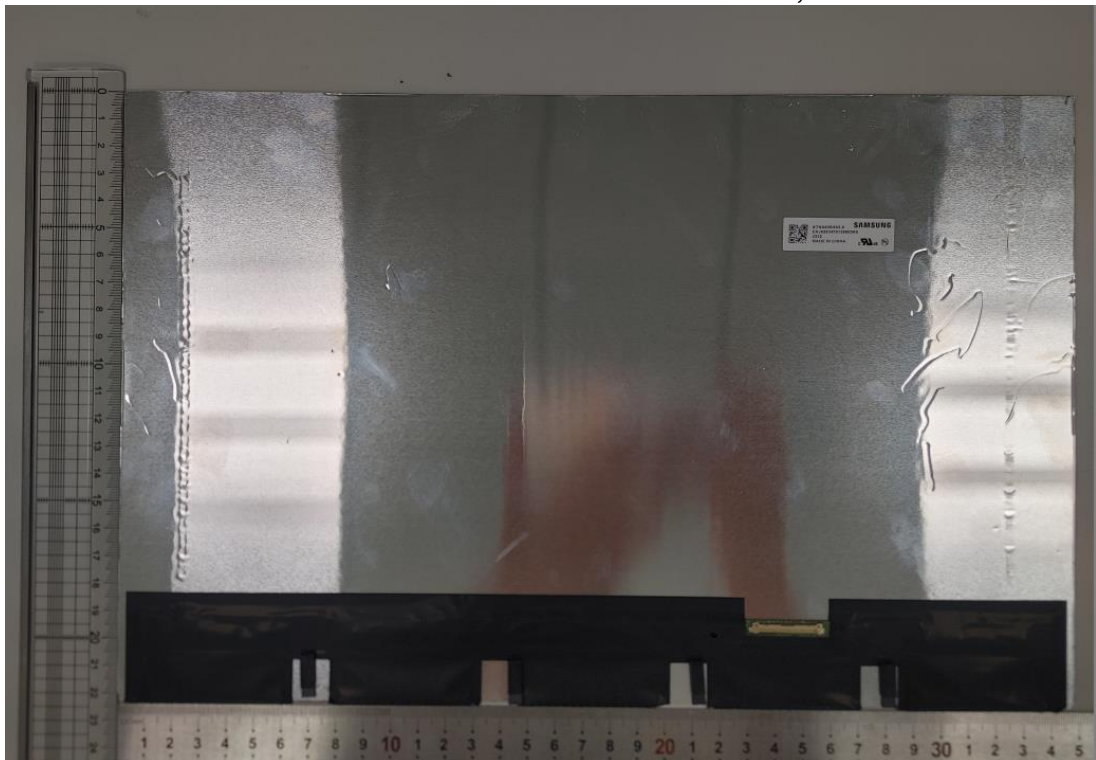


Figure 39
WLAN Combo Antenna Position

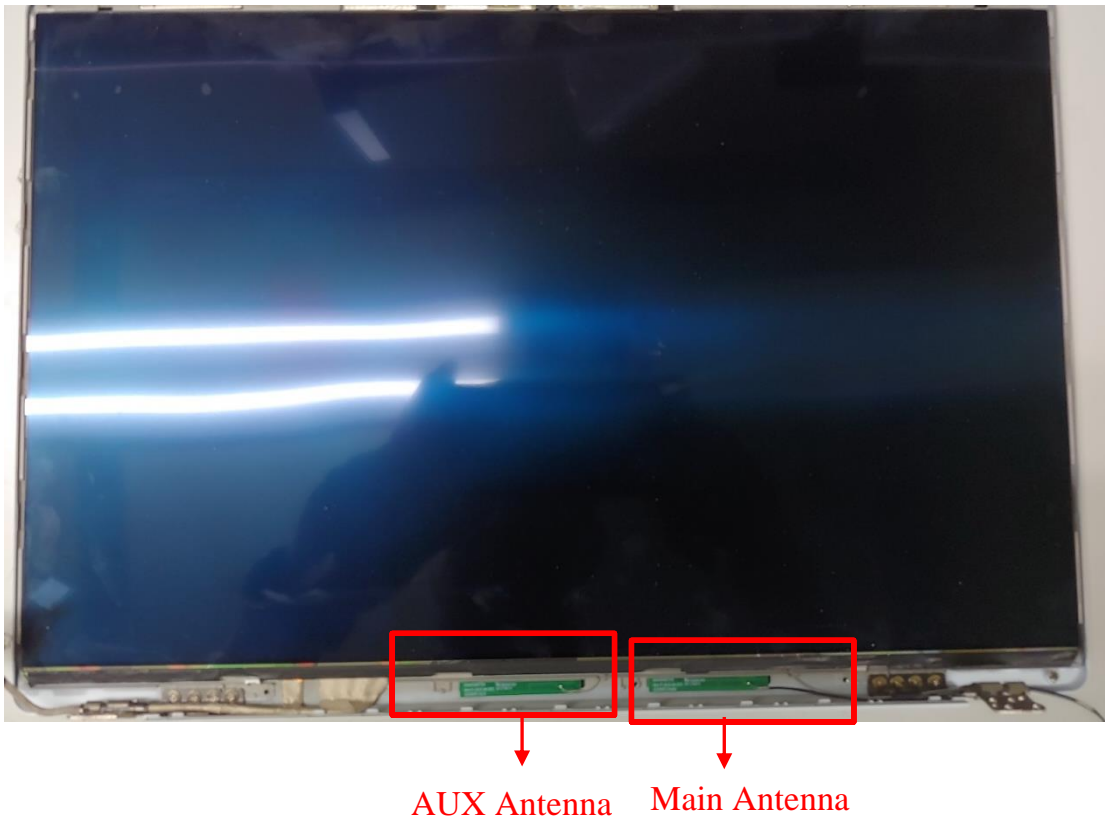


Figure 40
WLAN Combo Antenna

