



Letter of Permissive Change

Sep. 27, 2023

Subject: Permissive Change for FCC ID: BEJNT-16Z90R

To whom it may concern:

This is to request Permissive Change for FCC ID: BEJNT-16Z90R, except to the differences listed below table, otherwise includes RF schematic are identical.

Difference Configuration		Main Board	GPU	Battery	CPU	TPM (Trusted Platform Module)	Panel Touch Function	Antenna	Test SKU
Original Gran Date: 12/14/2022/	16Z90R-K	ROYAL MAIN B/D	Intel Iris Xe Graphics	LBV7227E (80 Wh)	Intel, i7-1360P Intel, i5-1340P	Not Support	Without	#1 WA-P-LELE-04-009 #2 L1LRF008-CS-H	SKU#1 SKU#2
	16Z90R-N					Support			
Permissive Change Gran Date: 09/07/2023	16Z90R-Q	ROYAL MAIN B/D	Intel Iris Xe Graphics	LBV7227E (80 Wh)	Intel, i7-1370P Intel, i5-1350P	Support	Without	#1 WA-P-LELE-04-009 #2 L1LRF008-CS-H	SKU#1 SKU#2
	16Z90R-H	ROYAL MAIN B/D	Intel Iris Xe Graphics	LBV7227E (80 Wh)	Intel, i7-1360P Intel, i5-1340P	Not Support	With	#3 WA-P-LBLB-04-110	SKU#3
	16Z90R-T					Support			
Permissive Change	16Z90S-G	MTL MAIN B/D	Intel Arc Graphics	LB3122MM (77 Wh)	Intel, Ultra 7 155H Intel, Ultra 5 125H	Not Support	Without	#1 WA-P-LELE-04-009 #2 L1LRF008-CS-H	SKU#1 SKU#2
	16Z90S-V		Intel Arc Graphics			Support			
	16Z90S-M		Intel Arc Graphics			Not Support			
	16Z90S-C		Intel Arc Graphics			Not Support			
	16Z90S-H		Intel Arc Graphics			Not Support	With	#3 WA-P-LBLB-04-110	SKU#3

Note: 1. The configuration can be identified as label.
 2. To add new models 16Z90S and 16ZD90S.
 3. To add new Configuration (HVIN) 16Z90S-G, 16Z90S-V, 16Z90S-M, 16Z90S-C and 16Z90S-H.
 4. Based on original ROYAL MAIN B/D main board, the difference between ROYAL MAIN B/D main board and MTL MAIN B/D main board is refer to next table. The MTL MAIN B/D main board is for new Configuration (HVIN) 16Z90S-G, 16Z90S-V, 16Z90S-M, 16Z90S-C and 16Z90S-H.
 5. To add new CPUs for MTL MAIN B/D main board.
 6. To add new Battery Pack for MTL MAIN B/D main board.
 7. To add new Type C cable (3A).

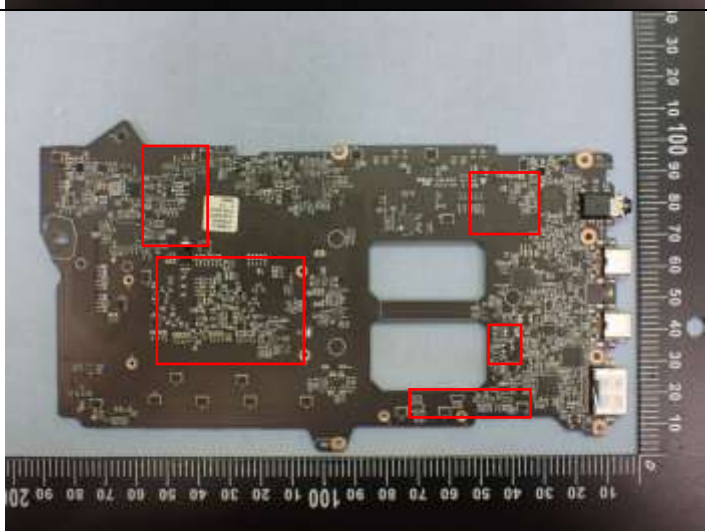
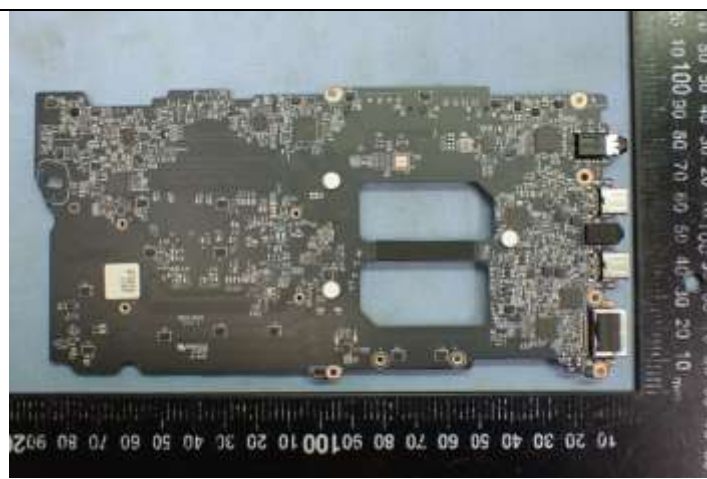
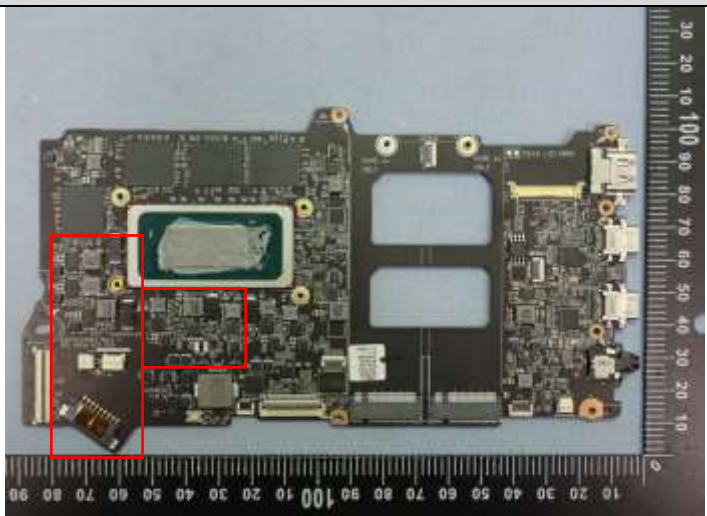
The WLAN SUB board and antenna location are identical with previous certificated.

Difference for Main Board

Original
ROYAL MAIN B/D



Permissive Change
MTL MAIN B/D





This time, there are three different configurations for the models, namely Sku1, Sku2, and Sku3. They have different corresponding certificate dates; Sku1 and Sku2 are dated on December 14, 2022, while Sku3 is dated on September 7, 2023.

Based on these differences, we will conduct testing according to the worst-case scenarios for RSE/band-edge as originally reported. For detailed modes, please refer to the respective reports in Section 3.8.

For SAR testing, we will conduct testing on SAR modes for laptops with SAR values greater than 0.8 W/kg, as specified in the original SAR report in KDB 178919 D01v06 section VI.

Furthermore, this permissive change does not involve any adjustments to the power settings. The RF power levels will remain consistent with the previous configuration. (In other words, all RF power is consistent with the original certificate grant on December 14, 2022)

Best regards

A handwritten signature in black ink that reads 'HjaeCtto'. The signature is written in a cursive, slightly stylized font.

Heejae Cho
Director, Regulatory and Environmental Affairs
LG Electronics USA