

● **SAR Test Result**

Test SKU: SKU #1 (with INPAQ Antenna)

Antenna Chain 1 (Main), Test Position: Screen

Measurement Report for 16Z90Q, FRONT, U-NII-5, UID 10755 AAC, Channel 15 (6025.0MHz)

Device under Test Properties

Model, Manufacturer	Dimensions [mm]	IMEI	DUT Type
16Z90Q,	355.0 x 240.0 x 6.0		Laptop

Exposure Conditions

Phantom Section, TSL	Position, Test Distance [mm]	Band	Group, UID	Frequency [MHz], Channel Number	Conversion Factor	TSL Conductivity [S/m]	TSL Permittivity
Flat, HSL	Screen, 5.00	U-NII-5	WLAN, 10755-AAC	6025.0, 15	5.55	5.46	34.9

Hardware Setup

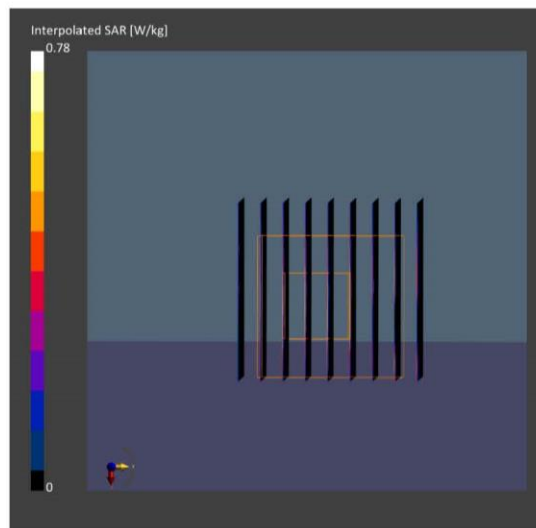
Phantom	TSL, Measured Date	Probe, Calibration Date	DAE, Calibration Date
ELI V5.0 (20deg probe tilt) - 1170	HBBL-600-10000	EX3DV4 - SN3855, 2021-09-24	DAE4 Sn1337, 2022-03-29

Scan Setup

	Area Scan	Zoom Scan
Grid Extents [mm]	85.0 x 204.0	22.0 x 22.0 x 22.0
Grid Steps [mm]	8.5 x 8.5	3.4 x 3.4 x 1.4
Sensor Surface [mm]	3.0	1.4
Graded Grid	Yes	Yes
Grading Ratio	1.5	1.4
MAIA	Y	Y
Surface Detection	VMS + 6p	VMS + 6p
Scan Method	Measured	Measured

Measurement Results

	Area Scan	Zoom Scan
Date	2022-05-16	2022-05-16
psSAR1g [W/kg]	0.198	0.191
psSAR10g [W/kg]	0.071	0.064
Power Drift [dB]	-0.18	0.18
Power Scaling	Disabled	Disabled
Scaling Factor [dB]		
TSL Correction	No correction	No correction
M2/M1 [%]		54.0
Dist 3dB Peak [mm]		8.2



Antenna Chain 0 (Main), Test Position: Bottom

Measurement Report for 16Z90Q, FRONT, U-NII-5, UID 10755 AAC, Channel 15 (6025.0MHz)

Device under Test Properties

Model, Manufacturer	Dimensions [mm]	IMEI	DUT Type
16Z90Q,	355.0 x 240.0 x 6.0		Laptop

Exposure Conditions

Phantom Section, TSL	Position, Test Distance [mm]	Band	Group, UID	Frequency [MHz], Channel Number	Conversion Factor	TSL Conductivity [S/m]	TSL Permittivity
Flat, HSL	Bottom, 0.00	U-NII-5	WLAN, 10755-AAC	6025.0, 15	5.55	5.46	34.9

Hardware Setup

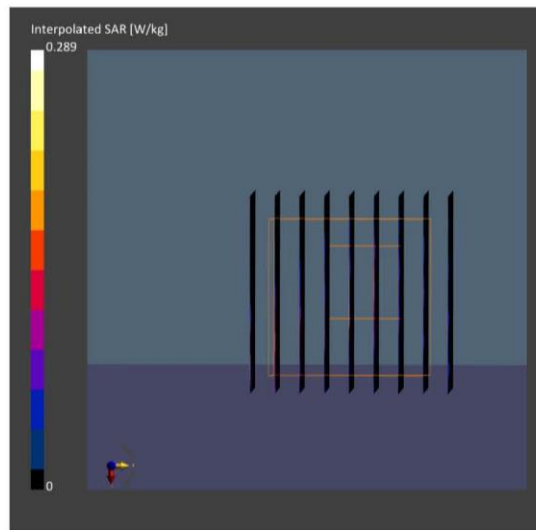
Phantom	TSL, Measured Date	Probe, Calibration Date	DAE, Calibration Date
ELI V5.0 (20deg probe tilt) - 1170	HBBL-600-10000	EX3DV4 - SN3855, 2021-09-24	DAE4 Sn1337, 2021-03-29

Scan Setup

	Area Scan	Zoom Scan
Grid Extents [mm]	85.0 x 204.0	22.0 x 22.0 x 22.0
Grid Steps [mm]	8.5 x 8.5	3.4 x 3.4 x 1.4
Sensor Surface [mm]	3.0	1.4
Graded Grid	Yes	Yes
Grading Ratio	1.5	1.4
MAIA	Y	Y
Surface Detection	VMS + 6p	VMS + 6p
Scan Method	Measured	Measured

Measurement Results

	Area Scan	Zoom Scan
Date	2022-05-16	2022-05-16
psSAR1g [W/kg]	0.056	0.063
psSAR10g [W/kg]	0.020	0.021
Power Drift [dB]	3.19	3.53
Power Scaling	Disabled	Disabled
Scaling Factor [dB]		
TSL Correction	No correction	No correction
M2/M1 [%]		63.4
Dist 3dB Peak [mm]		4.8



Test SKU: SKU #2 (with LUXSHARE-ICT Antenna)

Antenna Chain 0 (AUX), Test Position: Screen

Measurement Report for 16Z90Q, FRONT, U-NII-5, UID 10755 AAC, Channel 15 (6025.0MHz)

Device under Test Properties

Model, Manufacturer	Dimensions [mm]	IMEI	DUT Type
16Z90Q,	355.0 x 240.0 x 6.0		Laptop

Exposure Conditions

Phantom Section, TSL	Position, Test Distance [mm]	Band	Group, UID	Frequency [MHz], Channel Number	Conversion Factor	TSL Conductivity [S/m]	TSL Permittivity
Flat, HSL	Screen, 5.00	U-NII-5	WLAN, 10755-AAC	6025.0, 15	5.55	5.46	34.9

Hardware Setup

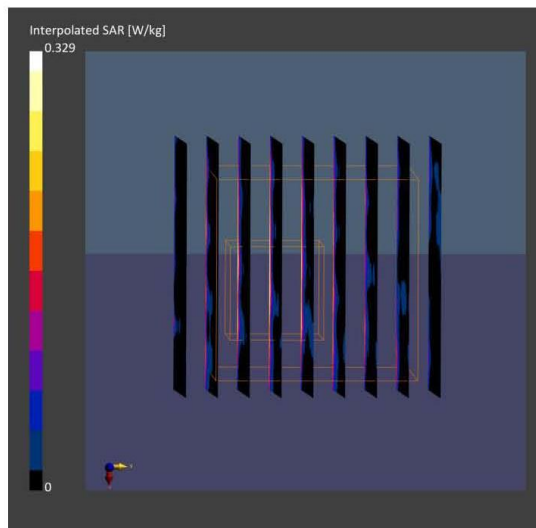
Phantom	TSL, Measured Date	Probe, Calibration Date	DAE, Calibration Date
ELI V5.0 (20deg probe tilt) - 1170	HBBL-600-10000	EX3DV4 - SN3855, 2021-09-24	DAE4 Sn1337, 2022-03-29

Scan Setup

	Area Scan	Zoom Scan
Grid Extents [mm]	85.0 x 204.0	22.0 x 22.0 x 22.0
Grid Steps [mm]	8.5 x 8.5	3.4 x 3.4 x 1.4
Sensor Surface [mm]	3.0	1.4
Graded Grid	Yes	Yes
Grading Ratio	1.5	1.4
MAIA	Y	Y
Surface Detection	VMS + 6p	VMS + 6p
Scan Method	Measured	Measured

Measurement Results

	Area Scan	Zoom Scan
Date	2022-05-27	2022-05-27
psSAR1g [W/kg]	0.071	0.081
psSAR10g [W/kg]	0.023	0.033
Power Drift [dB]	-0.54	0.50
Power Scaling	Disabled	Disabled
Scaling Factor [dB]		
TSL Correction	No correction	No correction
M2/M1 [%]		63.4
Dist 3dB Peak [mm]		6.3



Antenna Chain 0 (AUX), Test Position: Bottom

Measurement Report for 16Z90Q, FRONT, U-NII-5, UID 10755 AAC, Channel 15 (6025.0MHz)

Device under Test Properties

Model, Manufacturer	Dimensions [mm]	IMEI	DUT Type
16Z90Q,	355.0 x 240.0 x 6.0		Laptop

Exposure Conditions

Phantom Section, TSL	Position, Test Distance [mm]	Band	Group, UID	Frequency [MHz], Channel Number	Conversion Factor	TSL Conductivity [S/m]	TSL Permittivity
Flat, HSL	Bottom, 0.00	U-NII-5	WLAN, 10755-AAC	6025.0, 15	5.55	5.46	34.9

Hardware Setup

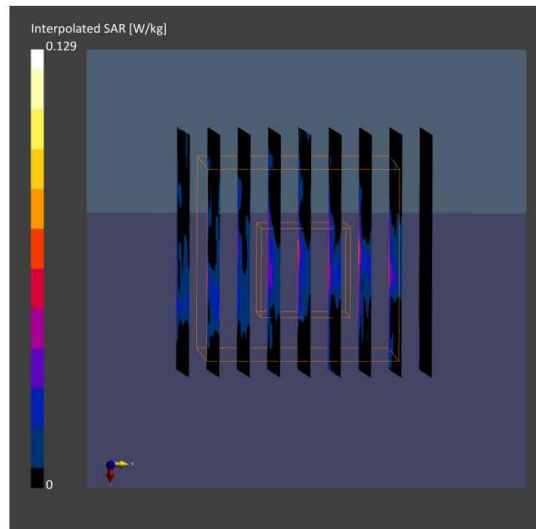
Phantom	TSL, Measured Date	Probe, Calibration Date	DAE, Calibration Date
ELI V5.0 (20deg probe tilt) - 1170	HBBL-600-10000	EX3DV4 - SN3855, 2021-09-24	DAE4 Sn1337, 2022-03-29

Scan Setup

	Area Scan	Zoom Scan
Grid Extents [mm]	85.0 x 204.0	22.0 x 22.0 x 22.0
Grid Steps [mm]	8.5 x 8.5	3.4 x 3.4 x 1.4
Sensor Surface [mm]	3.0	1.4
Graded Grid	Yes	Yes
Grading Ratio	1.5	1.4
MAIA	Y	Y
Surface Detection	VMS + 6p	VMS + 6p
Scan Method	Measured	Measured

Measurement Results

	Area Scan	Zoom Scan
Date	2022-05-27	2022-05-27
psSAR1g [W/kg]	0.053	0.039
psSAR10g [W/kg]	0.020	0.017
Power Drift [dB]	0.68	0.21
Power Scaling	Disabled	Disabled
Scaling Factor [dB]		
TSL Correction	No correction	No correction
M2/M1 [%]		77.4
Dist 3dB Peak [mm]		> 11.0



● **Power Density Test Result**

Test SKU: SKU #1 (with INPAQ Antenna)
Antenna Chain 0 (AUX)

Measurement Report for 16Z90Q, FRONT, U-NII-5, UID 10755 AAC, Channel 15 (6025.0MHz)

Device under Test Properties

Model, Manufacturer	Dimensions [mm]	IMEI	DUT Type
16Z90Q	355.0 x 240.0 x 6.0		Laptop

Exposure Conditions

Phantom Section	Position, Test Distance [mm]	Band	Group, UID	Frequency [MHz], Channel Number	Conversion Factor
5G Air	Screen, 2.00	U-NII-5	WLAN, 10755-AAC	6025.0, 15	1.0

Hardware Setup

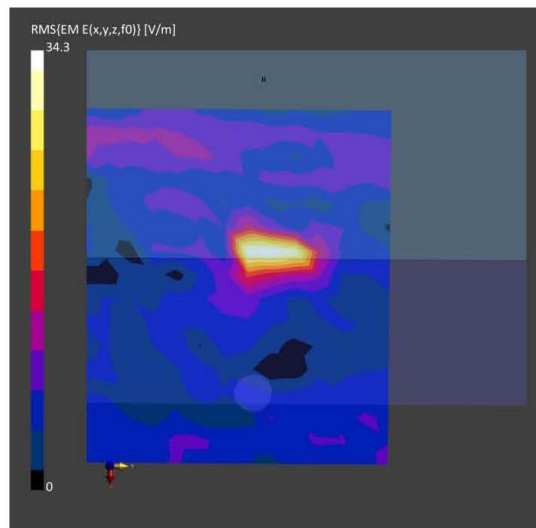
Phantom	Medium	Probe, Calibration Date	DAE, Calibration Date
mmWave- 1059	Air	EUmWV4 - SN9544_F1-55GHz, 2022-04-27	DAE4 Sn1337, 2022-03-29

Scan Setup

	5G Scan
Grid Extents [mm]	120.0 x 120.0
Grid Steps [lambda]	0.25 x 0.25
Sensor Surface [mm]	2.0
MAIA	Y

Measurement Results

	5G Scan
Date	2022-05-20
Avg. Area [cm ²]	4.00
psPDn+ [W/m ²]	0.455
psPDtot+ [W/m ²]	1.15
psPDmod+ [W/m ²]	1.79
E _{max} [V/m]	34.3
Power Drift [dB]	-1.00



Measurement Report for 16Z90Q, FRONT, U-NII-5, UID 10755 AAC, Channel 79 (6345.0MHz)

Device under Test Properties

Model, Manufacturer	Dimensions [mm]	IMEI	DUT Type
16Z90Q	355.0 x 240.0 x 6.0		Laptop

Exposure Conditions

Phantom Section	Position, Test Distance [mm]	Band	Group, UID	Frequency [MHz], Channel Number	Conversion Factor
5G Air	Screen, 2.00	U-NII-5	WLAN, 10755-AAC	6345.0, 79	1.0

Hardware Setup

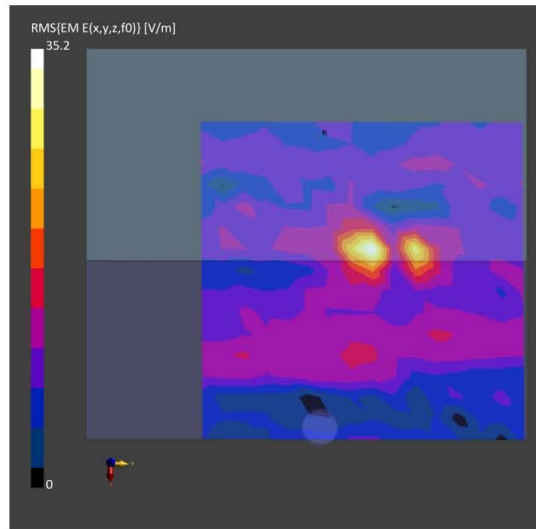
Phantom	Medium	Probe, Calibration Date	DAE, Calibration Date
mmWave- 1059	Air	EUmWV4 - SN9544_F1-55GHz, 2022-04-27	DAE4 Sn1337, 2022-03-29

Scan Setup

	5G Scan
Grid Extents [mm]	120.0 x 120.0
Grid Steps [lambda]	0.25 x 0.25
Sensor Surface [mm]	2.0
MAIA	N/A

Measurement Results

	5G Scan
Date	2022-05-20
Avg. Area [cm ²]	4.00
psPDn+ [W/m ²]	0.503
psPDtot+ [W/m ²]	0.555
psPDmod+ [W/m ²]	0.756
E _{max} [V/m]	35.2
Power Drift [dB]	1.30



Measurement Report for 16Z90Q, FRONT, U-NII-6, UID 10755 AAC, Channel 111 (6505.0MHz)

Device under Test Properties

Model, Manufacturer	Dimensions [mm]	IMEI	DUT Type
16Z90Q	355.0 x 240.0 x 6.0		Laptop

Exposure Conditions

Phantom Section	Position, Test Distance [mm]	Band	Group, UID	Frequency [MHz], Channel Number	Conversion Factor
5G Air	Screen, 2.00	U-NII-6	WLAN, 10755-AAC	6505.0, 111	1.0

Hardware Setup

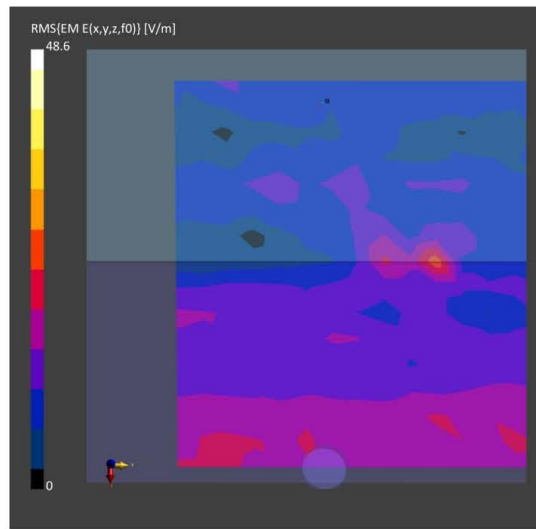
Phantom	Medium	Probe, Calibration Date	DAE, Calibration Date
mmWave- 1059	Air	EUmmWV4 - SN9544_F1-55GHz, 2022-04-27	DAE4 Sn1337, 2022-03-29

Scan Setup

	5G Scan
Grid Extents [mm]	120.0 x 120.0
Grid Steps [lambda]	0.25 x 0.25
Sensor Surface [mm]	2.0
MAIA	N/A

Measurement Results

	5G Scan
Date	2022-05-20
Avg. Area [cm ²]	4.00
psPDn+ [W/m ²]	0.762
psPDtot+ [W/m ²]	0.878
psPDmod+ [W/m ²]	0.932
E _{max} [V/m]	27.6
Power Drift [dB]	-3.17



Measurement Report for 16Z90Q, FRONT, U-NII-7, UID 10755 AAC, Channel 175 (6825.0MHz)

Device under Test Properties

Model, Manufacturer	Dimensions [mm]	IMEI	DUT Type
16Z90Q	355.0 x 240.0 x 6.0		Laptop

Exposure Conditions

Phantom Section	Position, Test Distance [mm]	Band	Group, UID	Frequency [MHz], Channel Number	Conversion Factor
5G Air	Screen, 2.00	U-NII-7	WLAN, 10755-AAC	6825.0, 175	1.0

Hardware Setup

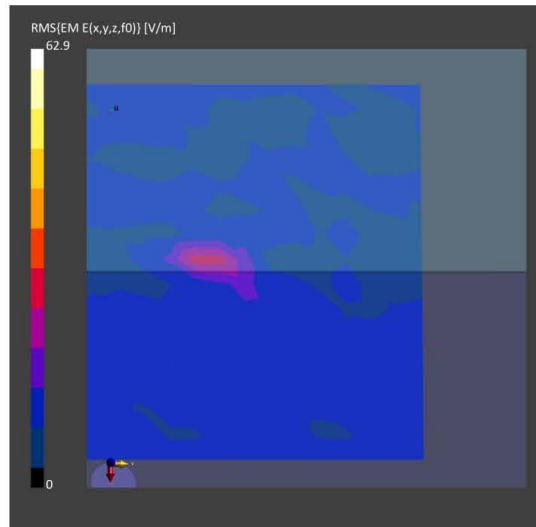
Phantom	Medium	Probe, Calibration Date	DAE, Calibration Date
mmWave- 1059	Air	EUmmWV4 - SN9544_F1-55GHz, 2022-04-27	DAE4 Sn1337, 2022-03-29

Scan Setup

	5G Scan
Grid Extents [mm]	120.0 x 120.0
Grid Steps [lambda]	0.25 x 0.25
Sensor Surface [mm]	2.0
MAIA	N/A

Measurement Results

	5G Scan
Date	2022-05-20
Avg. Area [cm ²]	4.00
psPDn+ [W/m ²]	0.624
psPDtot+ [W/m ²]	0.692
psPDmod+ [W/m ²]	1.25
E _{max} [V/m]	29.3
Power Drift [dB]	-0.25



Measurement Report for 16Z90Q, FRONT, U-NII-8, UID 10755 AAC, Channel 207 (6985.0MHz)

Device under Test Properties

Model, Manufacturer	Dimensions [mm]	IMEI	DUT Type
16Z90Q	355.0 x 240.0 x 6.0		Laptop

Exposure Conditions

Phantom Section	Position, Test Distance [mm]	Band	Group, UID	Frequency [MHz], Channel Number	Conversion Factor
5G Air	Screen, 2.00	U-NII-8	WLAN, 10755-AAC	6985.0, 207	1.0

Hardware Setup

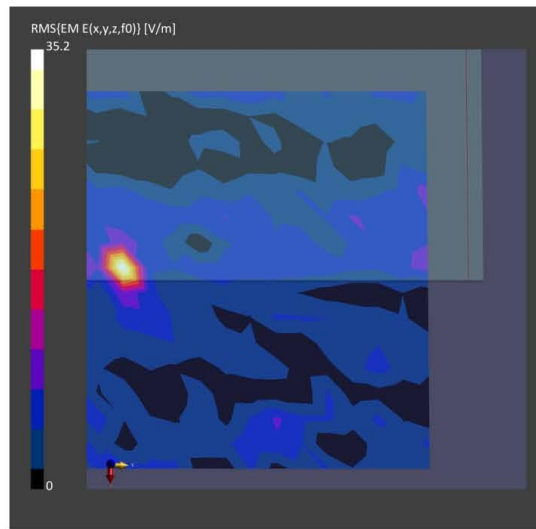
Phantom	Medium	Probe, Calibration Date	DAE, Calibration Date
mmWave- 1059	Air	EUmWV4 - SN9544_F1-55GHz, 2022-04-27	DAE4 Sn1337, 2022-03-29

Scan Setup

	5G Scan
Grid Extents [mm]	120.0 x 120.0
Grid Steps [lambda]	0.25 x 0.25
Sensor Surface [mm]	2.0
MAIA	N/A

Measurement Results

	5G Scan
Date	2022-05-20
Avg. Area [cm ²]	4.00
psPDn+ [W/m ²]	0.422
psPDtot+ [W/m ²]	0.518
psPDmod+ [W/m ²]	0.773
E _{max} [V/m]	35.2
Power Drift [dB]	-0.66



Test SKU: SKU #1 (with INPAQ Antenna)
Antenna Chain 1 (Main)

Measurement Report for 16Z90Q, FRONT, U-NII-5, UID 10755 AAC, Channel 15 (6025.0MHz)

Device under Test Properties

Model, Manufacturer	Dimensions [mm]	IMEI	DUT Type
16Z90Q	355.0 x 240.0 x 6.0		Laptop

Exposure Conditions

Phantom Section	Position, Test Distance [mm]	Band	Group, UID	Frequency [MHz], Channel Number	Conversion Factor
5G Air	Screen, 2.00	U-NII-5	WLAN, 10755-AAC	6025.0, 15	1.0

Hardware Setup

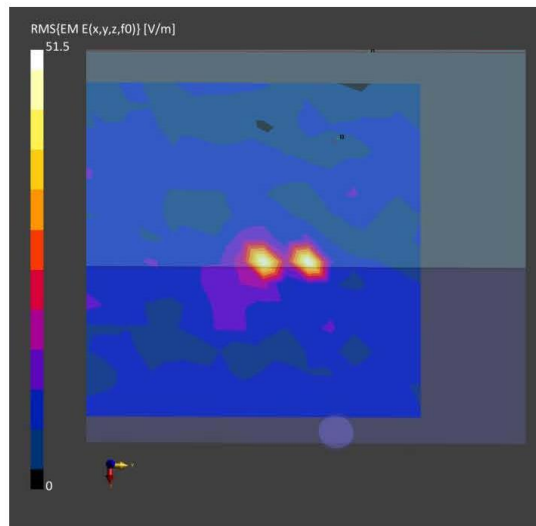
Phantom	Medium	Probe, Calibration Date	DAE, Calibration Date
mmWave- 1059	Air	EUmmWV4 - SN9544_F1-55GHz, 2022-04-27	DAE4 Sn1337, 2022-03-29

Scan Setup

	5G Scan
Grid Extents [mm]	120.0 x 120.0
Grid Steps [lambda]	0.25 x 0.25
Sensor Surface [mm]	2.0
MAIA	N/A

Measurement Results

	5G Scan
Date	2022-05-20
Avg. Area [cm ²]	4.00
psPDn+ [W/m ²]	1.00
psPDtot+ [W/m ²]	1.14
psPDmod+ [W/m ²]	2.81
E _{max} [V/m]	51.5
Power Drift [dB]	-0.39



Measurement Report for 16Z90Q, FRONT, U-NII-5, UID 10755 AAC, Channel 79 (6345.0MHz)

Device under Test Properties

Model, Manufacturer	Dimensions [mm]	IMEI	DUT Type
16Z90Q	355.0 x 240.0 x 6.0		Laptop

Exposure Conditions

Phantom Section	Position, Test Distance [mm]	Band	Group, UID	Frequency [MHz], Channel Number	Conversion Factor
5G Air	Screen, 2.00	U-NII-5	WLAN, 10755-AAC	6345.0, 79	1.0

Hardware Setup

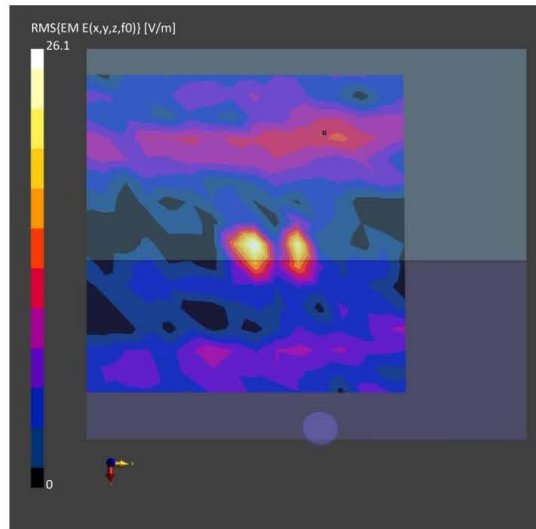
Phantom	Medium	Probe, Calibration Date	DAE, Calibration Date
mmWave- 1059	Air	EUmWV4 - SN9544_F1-55GHz, 2022-04-27	DAE4 Sn1337, 2022-03-29

Scan Setup

	5G Scan
Grid Extents [mm]	120.0 x 120.0
Grid Steps [lambda]	0.25 x 0.25
Sensor Surface [mm]	2.0
MAIA	N/A

Measurement Results

	5G Scan
Date	2022-05-20
Avg. Area [cm ²]	4.00
psPDn+ [W/m ²]	0.284
psPDtot+ [W/m ²]	0.316
psPDmod+ [W/m ²]	0.686
E _{max} [V/m]	26.1
Power Drift [dB]	-0.49



Measurement Report for 16Z90Q, FRONT, U-NII-6, UID 10755 AAC, Channel 111 (6505.0MHz)

Device under Test Properties

Model, Manufacturer	Dimensions [mm]	IMEI	DUT Type
16Z90Q	355.0 x 240.0 x 6.0		Laptop

Exposure Conditions

Phantom Section	Position, Test Distance [mm]	Band	Group, UID	Frequency [MHz], Channel Number	Conversion Factor
5G Air	Screen, 2.00	U-NII-6	WLAN, 10755-AAC	6505.0, 111	1.0

Hardware Setup

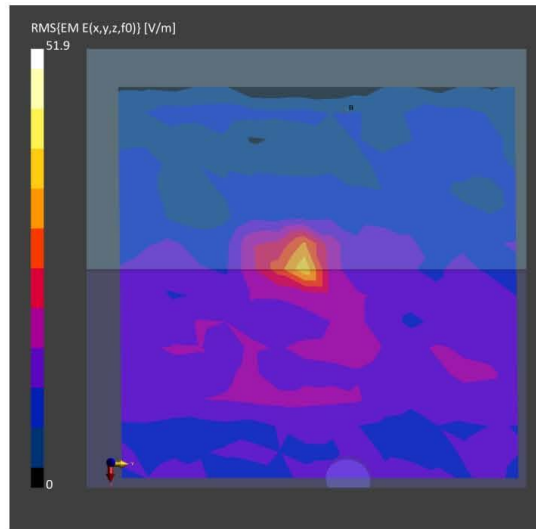
Phantom	Medium	Probe, Calibration Date	DAE, Calibration Date
mmWave- 1059	Air	EUmmWV4 - SN9544_F1-55GHz, 2022-04-27	DAE4 Sn1337, 2022-03-29

Scan Setup

	5G Scan
Grid Extents [mm]	120.0 x 120.0
Grid Steps [lambda]	0.25 x 0.25
Sensor Surface [mm]	2.0
MAIA	N/A

Measurement Results

	5G Scan
Date	2022-05-20
Avg. Area [cm ²]	4.00
psPDn+ [W/m ²]	0.895
psPDtot+ [W/m ²]	1.27
psPDmod+ [W/m ²]	1.80
E _{max} [V/m]	38.2
Power Drift [dB]	-0.13



Measurement Report for 16Z90Q, FRONT, U-NII-7, UID 10755 AAC, Channel 175 (6825.0MHz)

Device under Test Properties

Model, Manufacturer	Dimensions [mm]	IMEI	DUT Type
16Z90Q	355.0 x 240.0 x 6.0		Laptop

Exposure Conditions

Phantom Section	Position, Test Distance [mm]	Band	Group, UID	Frequency [MHz], Channel Number	Conversion Factor
5G Air	Screen, 2.00	U-NII-7	WLAN, 10755-AAC	6825.0, 175	1.0

Hardware Setup

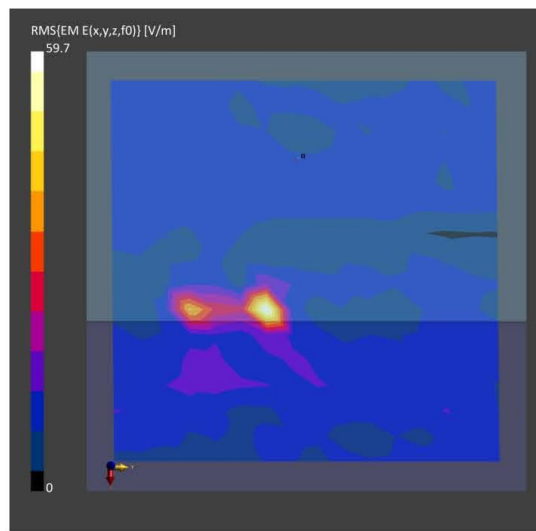
Phantom	Medium	Probe, Calibration Date	DAE, Calibration Date
mmWave- 1059	Air	EUmWV4 - SN9544_F1-55GHz, 2022-04-27	DAE4 Sn1337, 2022-03-29

Scan Setup

	5G Scan
Grid Extents [mm]	120.0 x 120.0
Grid Steps [lambda]	0.25 x 0.25
Sensor Surface [mm]	2.0
MAIA	N/A

Measurement Results

	5G Scan
Date	2022-05-20
Avg. Area [cm ²]	4.00
psPDn+ [W/m ²]	1.46
psPDtot+ [W/m ²]	1.59
psPDmod+ [W/m ²]	2.46
E _{max} [V/m]	59.7
Power Drift [dB]	-1.15



Measurement Report for 16Z90Q, FRONT, U-NII-8, UID 10755 AAC, Channel 207 (6985.0MHz)

Device under Test Properties

Model, Manufacturer	Dimensions [mm]	IMEI	DUT Type
16Z90Q	355.0 x 240.0 x 6.0		Laptop

Exposure Conditions

Phantom Section	Position, Test Distance [mm]	Band	Group, UID	Frequency [MHz], Channel Number	Conversion Factor
5G Air	Screen, 2.00	U-NII-8	WLAN, 10755-AAC	6985.0, 207	1.0

Hardware Setup

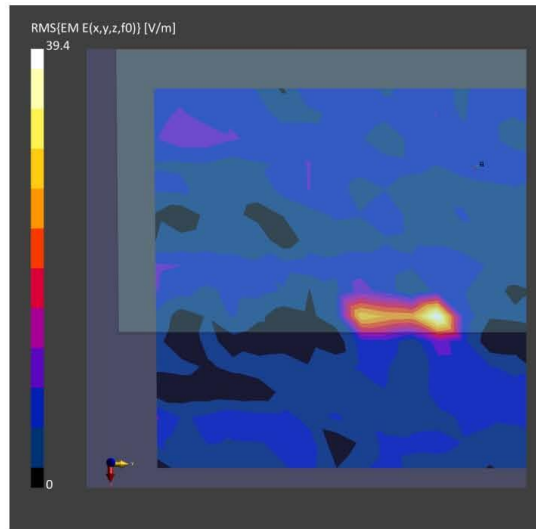
Phantom	Medium	Probe, Calibration Date	DAE, Calibration Date
mmWave- 1059	Air	EUmWV4 - SN9544_F1-55GHz, 2022-04-27	DAE4 Sn1337, 2022-03-29

Scan Setup

	5G Scan
Grid Extents [mm]	120.0 x 120.0
Grid Steps [lambda]	0.25 x 0.25
Sensor Surface [mm]	2.0
MAIA	N/A

Measurement Results

	5G Scan
Date	2022-05-20
Avg. Area [cm ²]	4.00
psPDn+ [W/m ²]	0.634
psPDtot+ [W/m ²]	0.712
psPDmod+ [W/m ²]	1.10
E _{max} [V/m]	39.4
Power Drift [dB]	-1.10



Test SKU: SKU #2 (with LUXSHARE-ICT Antenna)

Antenna Chain 0 (AUX)

Measurement Report for 16Z90Q, FRONT, U-NII-5, UID 10755 AAC, Channel 15 (6025.0MHz)

Device under Test Properties

Model, Manufacturer	Dimensions [mm]	IMEI	DUT Type
16Z90Q	355.0 x 240.0 x 6.0		Laptop

Exposure Conditions

Phantom Section	Position, Test Distance [mm]	Band	Group, UID	Frequency [MHz], Channel Number	Conversion Factor
5G Air	Screen, 2.00	U-NII-5	WLAN, 10755-AAC	6025.0, 15	1.0

Hardware Setup

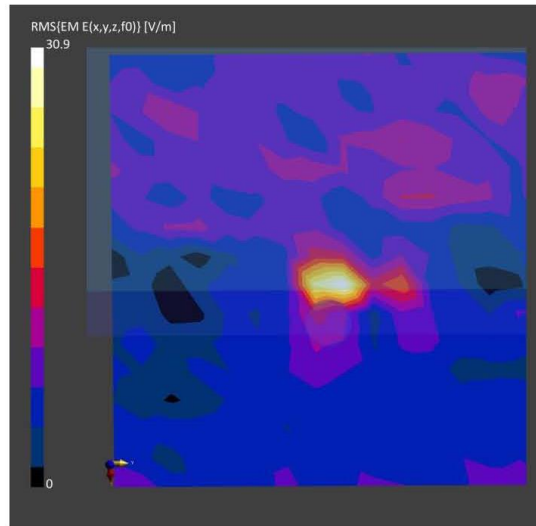
Phantom	Medium	Probe, Calibration Date	DAE, Calibration Date
mmWave- 1059	Air	EUmmWV4 - SN9544_F1-55GHz, 2022-04-27	DAE4 Sn1337, 2022-03-29

Scan Setup

	5G Scan
Grid Extents [mm]	120.0 x 120.0
Grid Steps [lambda]	0.25 x 0.25
Sensor Surface [mm]	2.0
MAIA	N/A

Measurement Results

	5G Scan
Date	2022-05-31
Avg. Area [cm ²]	4.00
psPDn+ [W/m ²]	0.477
psPDtot+ [W/m ²]	0.641
psPDmod+ [W/m ²]	1.40
E _{max} [V/m]	30.9
Power Drift [dB]	-0.22



Measurement Report for 16Z90Q, FRONT, U-NII-5, UID 10755 AAC, Channel 79 (6345.0MHz)

Device under Test Properties

Model, Manufacturer	Dimensions [mm]	IMEI	DUT Type
16Z90Q	355.0 x 240.0 x 6.0		Laptop

Exposure Conditions

Phantom Section	Position, Test Distance [mm]	Band	Group, UID	Frequency [MHz], Channel Number	Conversion Factor
5G Air	Screen, 2.00	U-NII-5	WLAN, 10755-AAC	6345.0, 79	1.0

Hardware Setup

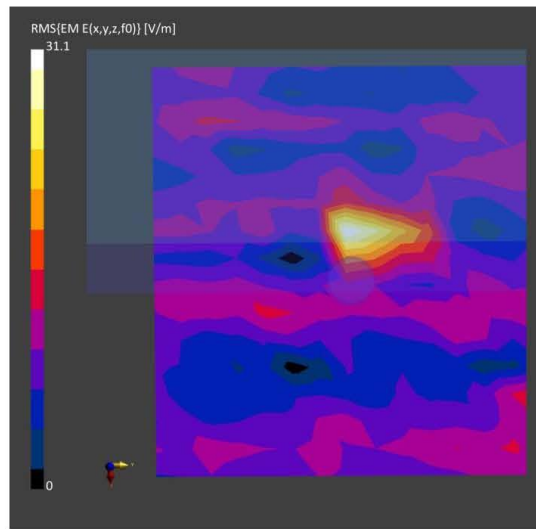
Phantom	Medium	Probe, Calibration Date	DAE, Calibration Date
mmWave- 1059	Air---	EUmWV4 - SN9544_F1-55GHz, 2022-04-27	DAE4 Sn1337, 2022-03-29

Scan Setup

	5G Scan
Grid Extents [mm]	120.0 x 120.0
Grid Steps [lambda]	0.25 x 0.25
Sensor Surface [mm]	2.0
MAIA	N/A

Measurement Results

	5G Scan
Date	2022-05-31
Avg. Area [cm ²]	4.00
psPDn+ [W/m ²]	0.375
psPDtot+ [W/m ²]	0.521
psPDmod+ [W/m ²]	0.672
E _{max} [V/m]	31.0
Power Drift [dB]	-1.40



Measurement Report for 16Z90Q, FRONT, U-NII-6, UID 10755 AAC, Channel 111 (6505.0MHz)

Device under Test Properties

Model, Manufacturer	Dimensions [mm]	IMEI	DUT Type
16Z90Q	355.0 x 240.0 x 6.0		Laptop

Exposure Conditions

Phantom Section	Position, Test Distance [mm]	Band	Group, UID	Frequency [MHz], Channel Number	Conversion Factor
5G Air	Screen, 2.00	U-NII-6	WLAN, 10755-AAC	6505.0, 111	1.0

Hardware Setup

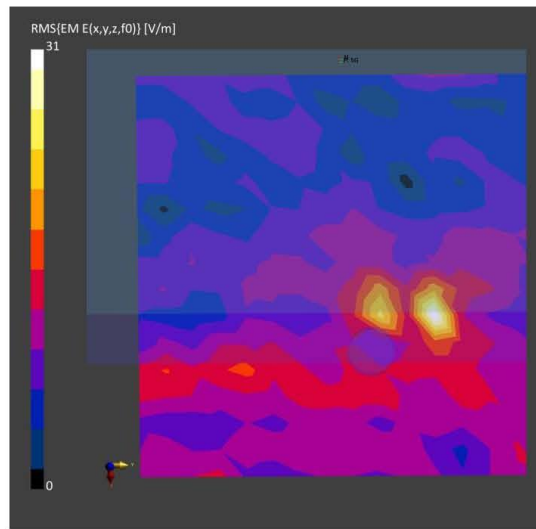
Phantom	Medium	Probe, Calibration Date	DAE, Calibration Date
mmWave- 1059	Air---	EUmmWV4 - SN9544_F1-55GHz, 2022-04-27	DAE4 Sn1337, 2022-03-29

Scan Setup

	5G Scan
Grid Extents [mm]	120.0 x 120.0
Grid Steps [lambda]	0.25 x 0.25
Sensor Surface [mm]	2.0
MAIA	N/A

Measurement Results

	5G Scan
Date	2022-05-31
Avg. Area [cm ²]	4.00
psPDn+ [W/m ²]	0.771
psPDtot+ [W/m ²]	0.906
psPDmod+ [W/m ²]	1.24
E _{max} [V/m]	31.0
Power Drift [dB]	1.81



Measurement Report for 16Z90Q, FRONT, U-NII-7, UID 10755 AAC, Channel 175 (6825.0MHz)

Device under Test Properties

Model, Manufacturer	Dimensions [mm]	IMEI	DUT Type
16Z90Q	355.0 x 240.0 x 6.0		Laptop

Exposure Conditions

Phantom Section	Position, Test Distance [mm]	Band	Group, UID	Frequency [MHz], Channel Number	Conversion Factor
5G Air	Screen, 2.00	U-NII-7	WLAN, 10755-AAC	6825.0, 175	1.0

Hardware Setup

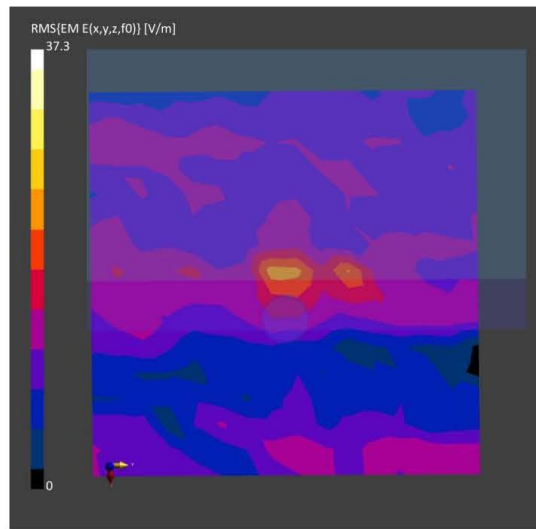
Phantom	Medium	Probe, Calibration Date	DAE, Calibration Date
mmWave- 1059	Air	EUmmWV4 - SN9544_F1-55GHz, 2022-04-27	DAE4 Sn1337, 2022-03-29

Scan Setup

	5G Scan
Grid Extents [mm]	120.0 x 120.0
Grid Steps [lambda]	0.25 x 0.25
Sensor Surface [mm]	2.0
MAIA	N/A

Measurement Results

	5G Scan
Date	2022-05-31
Avg. Area [cm ²]	4.00
psPDn+ [W/m ²]	0.722
psPDtot+ [W/m ²]	0.758
psPDmod+ [W/m ²]	0.995
E _{max} [V/m]	23.5
Power Drift [dB]	0.07



Measurement Report for 16Z90Q, FRONT, U-NII-8, UID 10755 AAC, Channel 207 (6985.0MHz)

Device under Test Properties

Model, Manufacturer	Dimensions [mm]	IMEI	DUT Type
, 16Z90Q	355.0 x 240.0 x 6.0		Laptop

Exposure Conditions

Phantom Section	Position, Test Distance [mm]	Band	Group, UID	Frequency [MHz], Channel Number	Conversion Factor
5G Air	Screen, 2.00	U-NII-8	WLAN, 10755-AAC	6985.0, 207	1.0

Hardware Setup

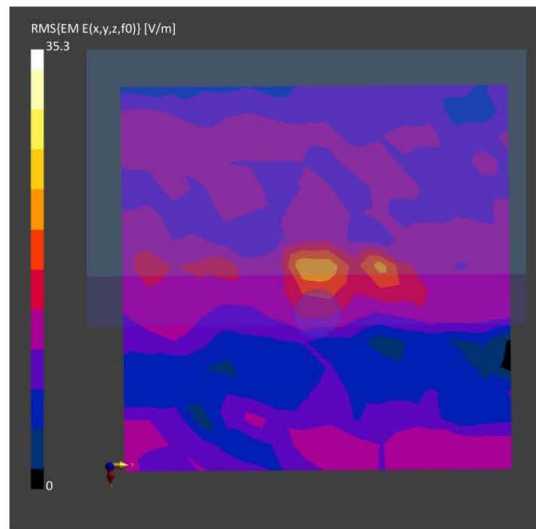
Phantom	Medium	Probe, Calibration Date	DAE, Calibration Date
mmWave- 1059	Air---	EUmWV4 - SN9544_F1-55GHz, 2022-04-27	DAE4 Sn1337, 2022-03-29

Scan Setup

	5G Scan
Grid Extents [mm]	120.0 x 120.0
Grid Steps [lambda]	0.25 x 0.25
Sensor Surface [mm]	2.0
MAIA	N/A

Measurement Results

	5G Scan
Date	2022-05-31
Avg. Area [cm ²]	4.00
psPDn+ [W/m ²]	0.690
psPDtot+ [W/m ²]	0.745
psPDmod+ [W/m ²]	0.830
E _{max} [V/m]	20.4
Power Drift [dB]	-2.67



Test SKU: SKU #2 (with LUXSHARE-ICT Antenna)

Antenna Chain 1 (Main)

Measurement Report for 16Z90Q, FRONT, U-NII-5, UID 10755 AAC, Channel 15 (6025.0MHz)

Device under Test Properties

Model, Manufacturer	Dimensions [mm]	IMEI	DUT Type
16Z90Q	355.0 x 240.0 x 6.0		Laptop

Exposure Conditions

Phantom Section	Position, Test Distance [mm]	Band	Group, UID	Frequency [MHz], Channel Number	Conversion Factor
5G Air	Screen, 2.00	U-NII-5	WLAN, 10755-AAC	6025.0, 15	1.0

Hardware Setup

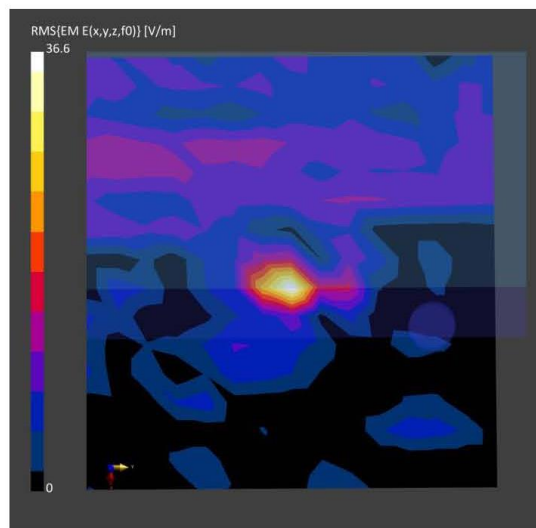
Phantom	Medium	Probe, Calibration Date	DAE, Calibration Date
mmWave- 1059	Air---	EUmmWV4 - SN9544_F1-55GHz, 2022-04-27	DAE4 Sn1337, 2022-03-29

Scan Setup

	5G Scan
Grid Extents [mm]	120.0 x 120.0
Grid Steps [lambda]	0.25 x 0.25
Sensor Surface [mm]	2.0
MAIA	N/A

Measurement Results

	5G Scan
Date	2022-05-31
Avg. Area [cm ²]	4.00
psPDn+ [W/m ²]	0.658
psPDtot+ [W/m ²]	0.789
psPDmod+ [W/m ²]	1.31
E _{max} [V/m]	36.6
Power Drift [dB]	-0.21



Measurement Report for 16Z90Q, FRONT, U-NII-5, UID 10755 AAC, Channel 79 (6345.0MHz)

Device under Test Properties

Model, Manufacturer	Dimensions [mm]	IMEI	DUT Type
16Z90Q	355.0 x 240.0 x 6.0		Laptop

Exposure Conditions

Phantom Section	Position, Test Distance [mm]	Band	Group, UID	Frequency [MHz], Channel Number	Conversion Factor
5G Air	Screen, 2.00	U-NII-5	WLAN, 10755-AAC	6345.0, 79	1.0

Hardware Setup

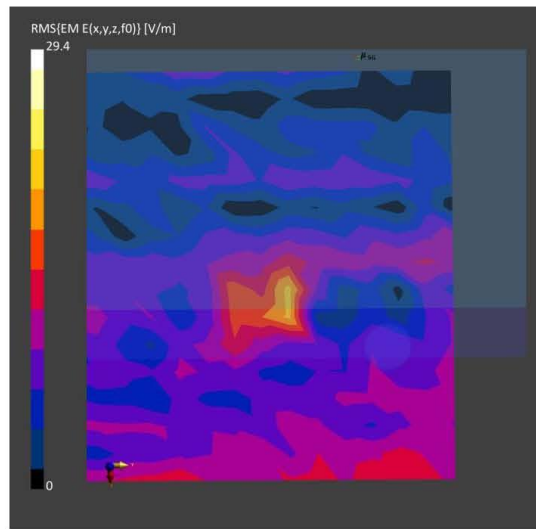
Phantom	Medium	Probe, Calibration Date	DAE, Calibration Date
mmWave- 1059	Air---	EUmWV4 - SN9544_F1-55GHz, 2022-04-27	DAE4 Sn1337, 2022-03-29

Scan Setup

	5G Scan
Grid Extents [mm]	120.0 x 120.0
Grid Steps [lambda]	0.25 x 0.25
Sensor Surface [mm]	2.0
MAIA	N/A

Measurement Results

	5G Scan
Date	2022-05-31
Avg. Area [cm ²]	4.00
psPDn+ [W/m ²]	0.203
psPDtot+ [W/m ²]	0.252
psPDmod+ [W/m ²]	0.672
E _{max} [V/m]	20.8
Power Drift [dB]	1.57



Measurement Report for 16Z90Q, FRONT, U-NII-6, UID 10755 AAC, Channel 111 (6505.0MHz)

Device under Test Properties

Model, Manufacturer	Dimensions [mm]	IMEI	DUT Type
16Z90Q	355.0 x 240.0 x 6.0		Laptop

Exposure Conditions

Phantom Section	Position, Test Distance [mm]	Band	Group, UID	Frequency [MHz], Channel Number	Conversion Factor
5G Air	Screen, 2.00	U-NII-6	WLAN, 10755-AAC	6505.0, 111	1.0

Hardware Setup

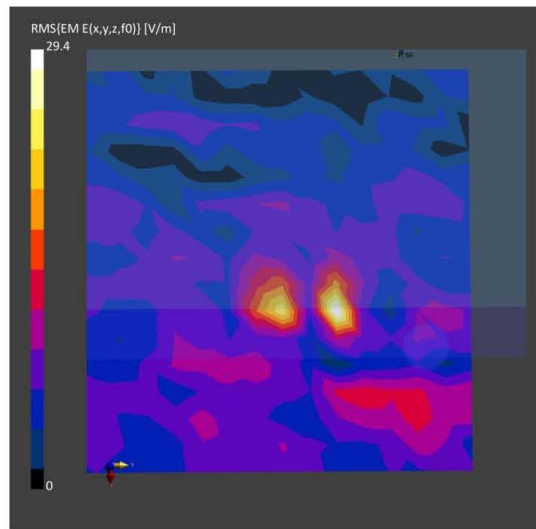
Phantom	Medium	Probe, Calibration Date	DAE, Calibration Date
mmWave- 1059	Air---	EUmWV4 - SN9544_F1-55GHz, 2022-04-27	DAE4 Sn1337, 2022-03-29

Scan Setup

	5G Scan
Grid Extents [mm]	120.0 x 120.0
Grid Steps [lambda]	0.25 x 0.25
Sensor Surface [mm]	2.0
MAIA	N/A

Measurement Results

	5G Scan
Date	2022-05-31
Avg. Area [cm ²]	4.00
psPDn+ [W/m ²]	0.382
psPDtot+ [W/m ²]	0.497
psPDmod+ [W/m ²]	0.574
E _{max} [V/m]	29.3
Power Drift [dB]	-1.84



Measurement Report for 16Z90Q, FRONT, U-NII-7, UID 10755 AAC, Channel 175 (6825.0MHz)

Device under Test Properties

Model, Manufacturer	Dimensions [mm]	IMEI	DUT Type
, 16Z90Q	355.0 x 240.0 x 6.0		Laptop

Exposure Conditions

Phantom Section	Position, Test Distance [mm]	Band	Group, UID	Frequency [MHz], Channel Number	Conversion Factor
5G Air	Screen, 2.00	U-NII-7	WLAN, 10755-AAC	6825.0, 175	1.0

Hardware Setup

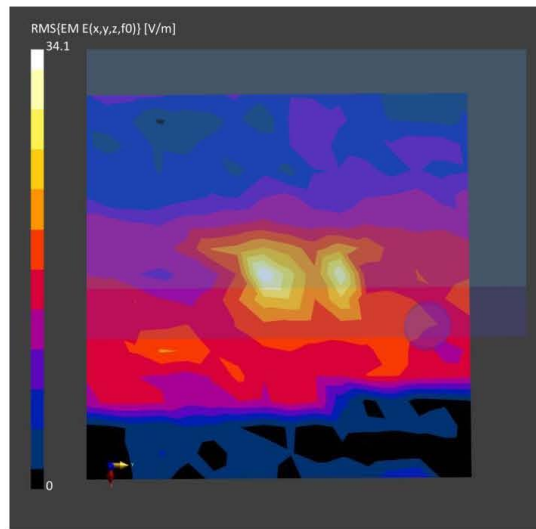
Phantom	Medium	Probe, Calibration Date	DAE, Calibration Date
mmWave- 1059	Air---	EUmWV4 - SN9544_F1-55GHz, 2022-04-27	DAE4 Sn1337, 2022-03-29

Scan Setup

	5G Scan
Grid Extents [mm]	120.0 x 120.0
Grid Steps [lambda]	0.25 x 0.25
Sensor Surface [mm]	2.0
MAIA	N/A

Measurement Results

	5G Scan
Date	2022-05-31
Avg. Area [cm ²]	4.00
psPDn+ [W/m ²]	1.28
psPDtot+ [W/m ²]	1.41
psPDmod+ [W/m ²]	1.51
E _{max} [V/m]	34.1
Power Drift [dB]	0.31



Measurement Report for 16Z90Q, FRONT, U-NII-8, UID 10755 AAC, Channel 207 (6985.0MHz)

Device under Test Properties

Model, Manufacturer	Dimensions [mm]	IMEI	DUT Type
16Z90Q	355.0 x 240.0 x 6.0		Laptop

Exposure Conditions

Phantom Section	Position, Test Distance [mm]	Band	Group, UID	Frequency [MHz], Channel Number	Conversion Factor
5G Air	Screen, 2.00	U-NII-8	WLAN, 10755-AAC	6985.0, 207	1.0

Hardware Setup

Phantom	Medium	Probe, Calibration Date	DAE, Calibration Date
mmWave- 1059	Air---	EUmWV4 - SN9544_F1-55GHz, 2022-04-27	DAE4 Sn1337, 2022-03-29

Scan Setup

	5G Scan
Grid Extents [mm]	120.0 x 120.0
Grid Steps [lambda]	0.25 x 0.25
Sensor Surface [mm]	2.0
MAIA	N/A

Measurement Results

	5G Scan
Date	2022-05-31
Avg. Area [cm ²]	4.00
psPDn+ [W/m ²]	0.400
psPDtot+ [W/m ²]	0.772
psPDmod+ [W/m ²]	2.02
E _{max} [V/m]	40.0
Power Drift [dB]	0.32

