

Appendix A. Plots of System Verification

The plots for system verification are shown as follows.

Plots of System Verification

Measurement Report S01 System Check_H2450_230926 Device under Test Properties

Model, Manufacturer	Dimensions [mm]	IMEI	DUT Type
Dipole	10.0 x 10.0 x 300.0		

Exposure Conditions

Phantom Section, TSL	Position, Test Distance [mm]	Band	Group, UID	Frequency [MHz], Channel Number	Conversion Factor	TSL Conductivity [S/m]	TSL Permittivity
Flat				2450.0	7.67	1.79	37.6

Hardware Setup

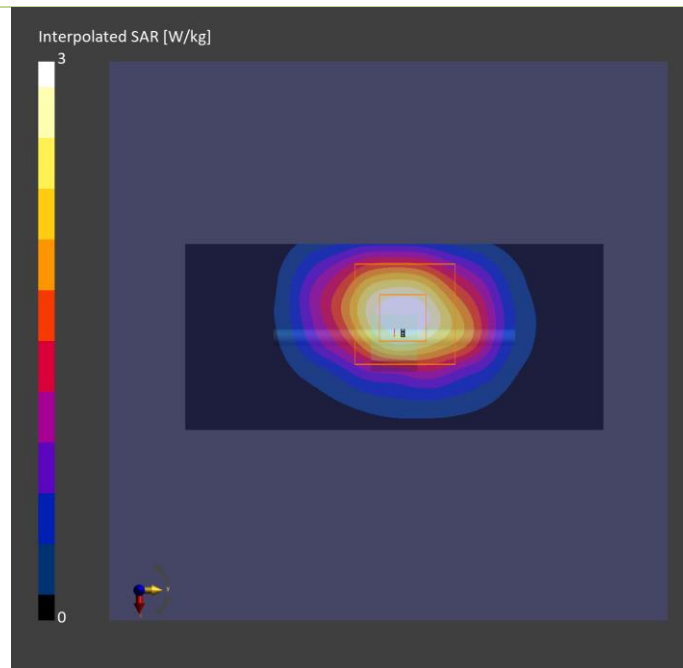
Phantom	TSL, Measured Date	Probe, Calibration Date	DAE, Calibration Date
ELI V8.0 (20deg probe tilt) - 2118	H06T27N5, 2023-Sep-26	EX3DV4 - SN7555, 2023-07-19	DAE4 Sn1585, 2023-07-14

Scan Setup

	Area Scan	Zoom Scan
Grid Extents [mm]	48.0 x 96.0	30.0 x 30.0 x 30.0
Grid Steps [mm]	12.0 x 12.0	5.0 x 5.0 x 5.0
Sensor Surface [mm]	3.0	1.4

Measurement Results

	Area Scan	Zoom Scan
Date	2023-09-26	2023-09-26
psSAR1g [W/kg]	2.36	2.39
psSAR10g [W/kg]	1.14	1.11
Power Drift [dB]	0.01	-0.03



Plots of System Verification

Measurement Report S02 System Check_H5250_230927 Device under Test Properties

Model, Manufacturer	Dimensions [mm]	IMEI	DUT Type
Dipole	10.0 x 10.0 x 300.0		

Exposure Conditions

Phantom Section, TSL	Position, Test Distance [mm]	Band	Group, UID	Frequency [MHz], Channel Number	Conversion Factor	TSL Conductivity [S/m]	TSL Permittivity
Flat				5250.0	5.67	4.63	37.1

Hardware Setup

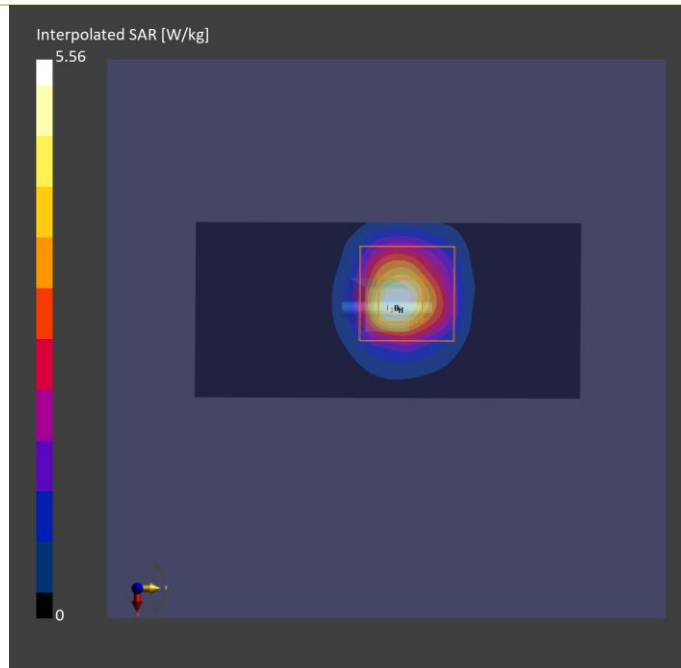
Phantom	TSL, Measured Date	Probe, Calibration Date	DAE, Calibration Date
ELI V8.0 (20deg probe tilt) - 2118	H51T72N5, 2023-Sep-27	EX3DV4 - SN7555, 2023-07-19	DAE4 Sn1585, 2023-07-14

Scan Setup

	Area Scan	Zoom Scan
Grid Extents [mm]	40.0 x 80.0	24.0 x 24.0 x 22.0
Grid Steps [mm]	10.0 x 10.0	4.0 x 4.0 x 1.4
Sensor Surface [mm]	3.0	1.4

Measurement Results

	Area Scan	Zoom Scan
Date	2023-09-27	2023-09-27
psSAR1g [W/kg]	3.68	4.21
psSAR10g [W/kg]	1.17	1.19
Power Drift [dB]	0.02	0.03



Plots of System Verification

Measurement Report S03 System Check_H5600_230928 Device under Test Properties

Model, Manufacturer	Dimensions [mm]	IMEI	DUT Type
Dipole	10.0 x 10.0 x 300.0		

Exposure Conditions

Phantom Section, TSL	Position, Test Distance [mm]	Band	Group, UID	Frequency [MHz], Channel Number	Conversion Factor	TSL Conductivity [S/m]	TSL Permittivity
Flat				5600.0	4.91	4.88	36.4

Hardware Setup

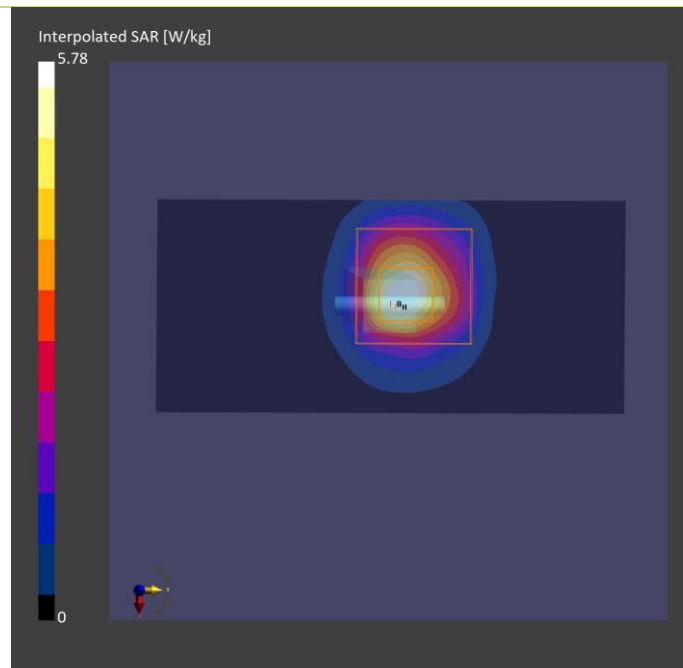
Phantom	TSL, Measured Date	Probe, Calibration Date	DAE, Calibration Date
ELI V8.0 (20deg probe tilt) - 2118	H51T72N5, 2023-Sep-28	EX3DV4 - SN7555, 2023-07-19	DAE4 Sn1585, 2023-07-14

Scan Setup

	Area Scan	Zoom Scan
Grid Extents [mm]	40.0 x 80.0	24.0 x 24.0 x 22.0
Grid Steps [mm]	10.0 x 10.0	4.0 x 4.0 x 1.4
Sensor Surface [mm]	3.0	1.4

Measurement Results

	Area Scan	Zoom Scan
Date	2023-09-28	2023-09-28
psSAR1g [W/kg]	3.88	4.46
psSAR10g [W/kg]	1.22	1.28
Power Drift [dB]	0.02	0.03



Plots of System Verification

Measurement Report

S04 System Check_H5800_230928

Device under Test Properties

Model, Manufacturer	Dimensions [mm]	IMEI	DUT Type
Dipole	10.0 x 10.0 x 300.0		

Exposure Conditions

Phantom Section, TSL	Position, Test Distance [mm]	Band	Group, UID	Frequency [MHz], Channel Number	Conversion Factor	TSL Conductivity [S/m]	TSL Permittivity
Flat				5800.0	5.16	5.15	35.8

Hardware Setup

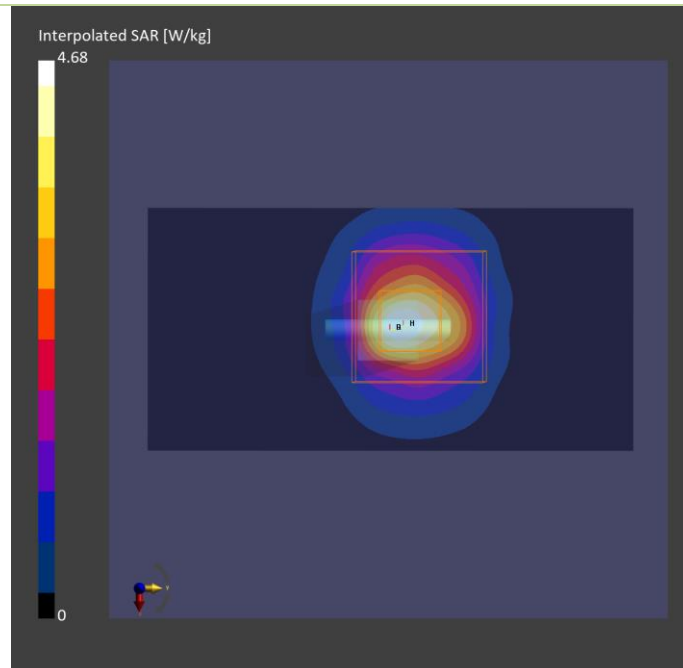
Phantom	TSL, Measured Date	Probe, Calibration Date	DAE, Calibration Date
ELI V8.0 (20deg probe tilt) - 2118	H51T72N5 , 2023-Sep-28	EX3DV4 - SN7555, 2023-07-19	DAE4 Sn1585, 2023-07-14

Scan Setup

	Area Scan	Zoom Scan
Grid Extents [mm]	40.0 x 80.0	24.0 x 24.0 x 22.0
Grid Steps [mm]	10.0 x 10.0	4.0 x 4.0 x 1.4
Sensor Surface [mm]	3.0	1.4

Measurement Results

	Area Scan	Zoom Scan
Date	2023-09-28	2023-09-28
psSAR1g [W/kg]	3.27	3.67
psSAR10g [W/kg]	0.990	1.05
Power Drift [dB]	-0.09	-0.06



Plots of System Verification

Measurement Report S05 System Check_H5800_231002 Device under Test Properties

Model, Manufacturer	Dimensions [mm]	IMEI	DUT Type
Dipole	10.0 x 10.0 x 300.0		

Exposure Conditions

Phantom Section, TSL	Position, Test Distance [mm]	Band	Group, UID	Frequency [MHz], Channel Number	Conversion Factor	TSL Conductivity [S/m]	TSL Permittivity
Flat				5800.000	5.16	5.18	35.3

Hardware Setup

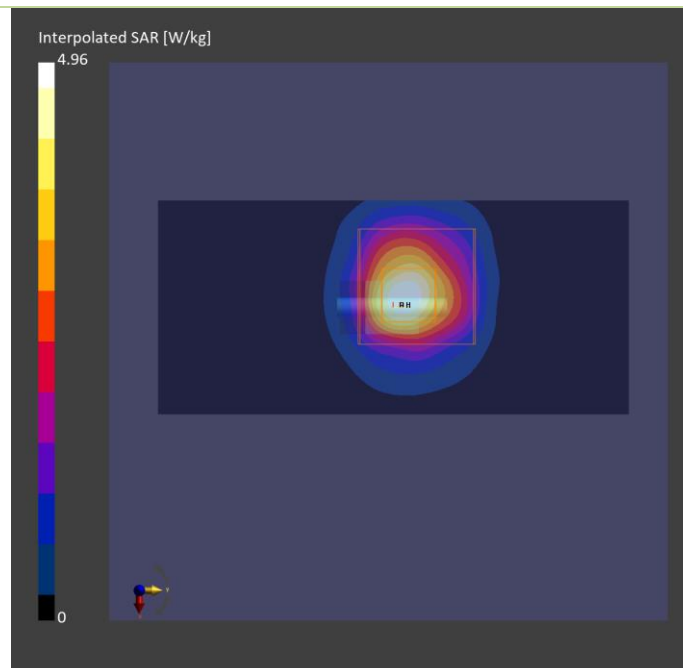
Phantom	TSL, Measured Date	Probe, Calibration Date	DAE, Calibration Date
ELI V8.0 (20deg probe tilt) - 2118	H51T72N5, 2023-Oct-02	EX3DV4 - SN7555, 2023-07-19	DAE4 Sn1585, 2023-07-14

Scan Setup

	Area Scan	Zoom Scan
Grid Extents [mm]	40.0 x 80.0	24.0 x 24.0 x 22.0
Grid Steps [mm]	10.0 x 10.0	4.0 x 4.0 x 1.4
Sensor Surface [mm]	3.0	1.4

Measurement Results

	Area Scan	Zoom Scan
Date	2023-10-02	2023-10-02
psSAR1g [W/kg]	3.27	3.71
psSAR10g [W/kg]	0.990	1.08
Power Drift [dB]	-0.09	-0.11



Plots of System Verification

Measurement Report S06 System Check_H2450_230926 Device under Test Properties

Model, Manufacturer	Dimensions [mm]	IMEI	DUT Type
Dipole	10.0 x 10.0 x 300.0		

Exposure Conditions

Phantom Section, TSL	Position, Test Distance [mm]	Band	Group, UID	Frequency [MHz], Channel Number	Conversion Factor	TSL Conductivity [S/m]	TSL Permittivity
Flat				2450.0	7.67	1.79	37.6

Hardware Setup

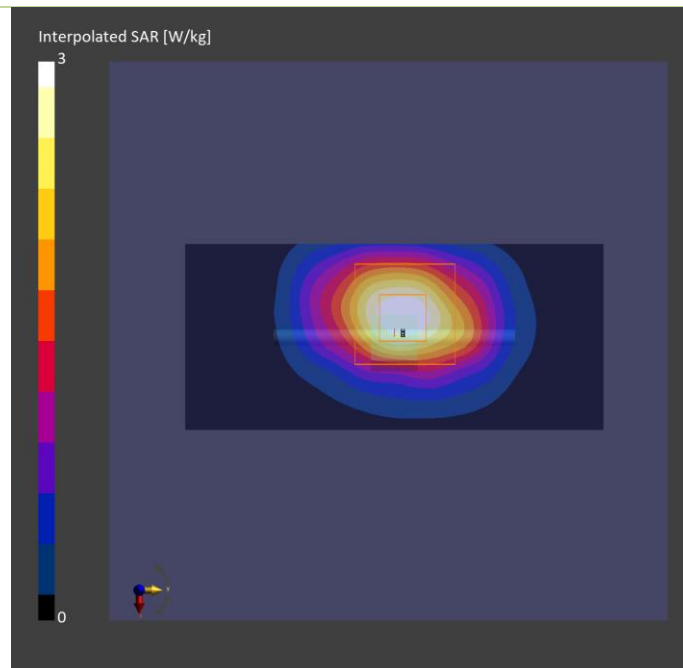
Phantom	TSL, Measured Date	Probe, Calibration Date	DAE, Calibration Date
ELI V8.0 (20deg probe tilt) - 2118	H06T27N5, 2023-Sep-26	EX3DV4 - SN7555, 2023-07-19	DAE4 Sn1585, 2023-07-14

Scan Setup

	Area Scan	Zoom Scan
Grid Extents [mm]	48.0 x 96.0	30.0 x 30.0 x 30.0
Grid Steps [mm]	12.0 x 12.0	5.0 x 5.0 x 5.0
Sensor Surface [mm]	3.0	1.4

Measurement Results

	Area Scan	Zoom Scan
Date	2023-09-26	2023-09-26
psSAR1g [W/kg]	2.36	2.39
psSAR10g [W/kg]	1.14	1.11
Power Drift [dB]	0.01	-0.03



Plots of System Verification

Test Laboratory: Bureau Veritas ADT SAR/HAC Testing Lab

Date: 2023/10/02

S07 System Check_H 13MHz_231002

DUT: CLA-13 MHz ;Type: CLA-13 ;SN: 1018

Communication System: UID 0, CW (0); Frequency: 13 MHz;Duty Cycle: 1:1

Medium: H13_1002 Medium parameters used (interpolated): $f = 13 \text{ MHz}$; $\sigma = 0.727 \text{ S/m}$; $\epsilon_r = 55.95$; $\rho = 1000 \text{ kg/m}^3$

Ambient Temperature : 22.4 °C ; Liquid Temperature : 21.5 °C

DASY5 Configuration:

- Probe: EX3DV4 - SN7720; ConvF(17.02, 17.02, 17.02) @ 13 MHz; Calibrated: 2023/03/23
- Sensor-Surface: 1.4mm (Mechanical Surface Detection)
- Electronics: DAE4 Sn1762; Calibrated: 2022/12/08
- Phantom: ELI_Phantom_1204; Type: QD OVA 002 Ax; Serial: 1204
- Measurement SW: DASY52, Version 52.10 (4); SEMCAD X Version 14.6.14 (7501)

Pin=50mW/Area Scan (24x241x1): Interpolated grid: $dx=1.000 \text{ mm}$, $dy=1.000 \text{ mm}$

Maximum value of SAR (interpolated) = 0.00244 W/kg

Pin=50mW/Zoom Scan (7x7x16)/Cube 0: Measurement grid: $dx=4\text{mm}$, $dy=4\text{mm}$, $dz=1.4\text{mm}$

Reference Value = 1.822 V/m; Power Drift = -0.04 dB

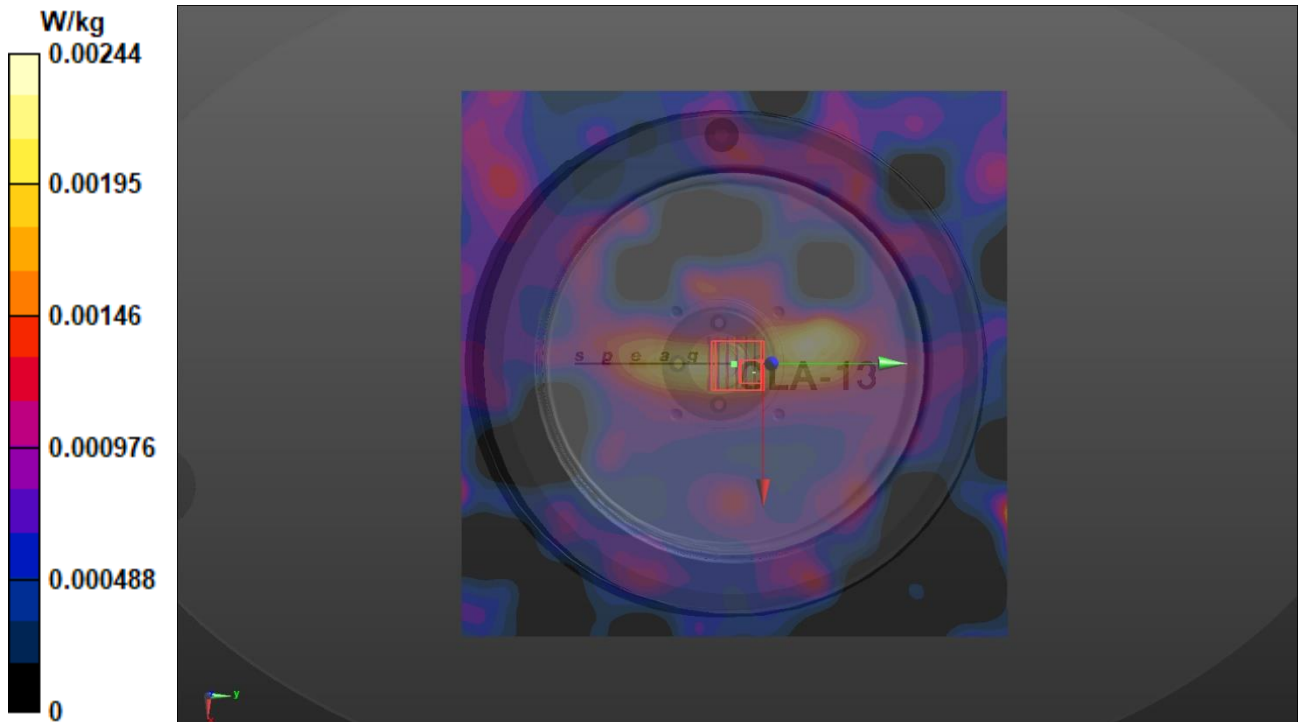
Peak SAR (extrapolated) = 0.00381 W/kg

SAR(1 g) = 0.029 W/kg; SAR(10 g) = 0.019 W/kg (SAR corrected for target medium)

Smallest distance from peaks to all points 3 dB below: Larger than measurement grid

Ratio of SAR at M2 to SAR at M1 = 88%

Maximum value of SAR (measured) = 0.00275 W/kg



Plots of System Verification

Measurement Report

S08 System Check_H6500_230927

Device under Test Properties

Model, Manufacturer	Dimensions [mm]	IMEI	DUT Type
Dipole	50.0 x 10.0 x 8.0		

Exposure Conditions

Phantom Section, TSL	Position, Test Distance [mm]	Band	Group, UID	Frequency [MHz], Channel Number	Conversion Factor	TSL Conductivity [S/m]	TSL Permittivity
Flat				6500.0	5.52	6.10	35.0

Hardware Setup

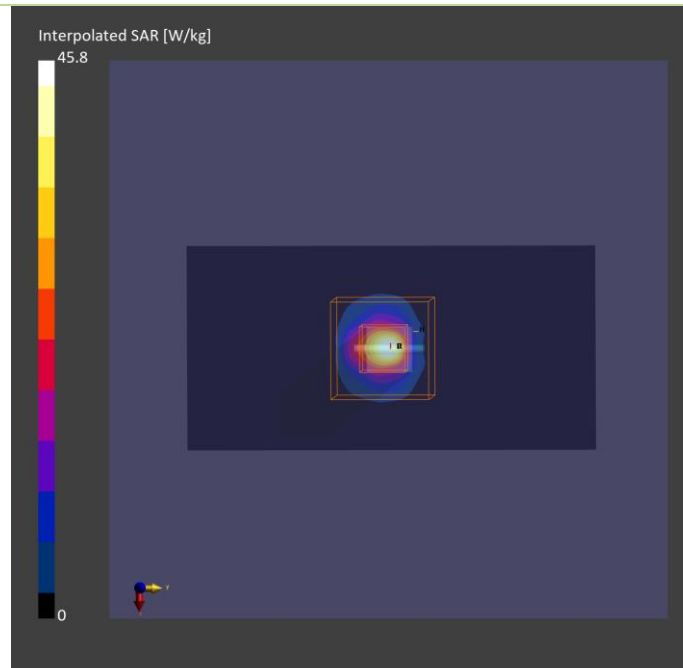
Phantom	TSL, Measured Date	Probe, Calibration Date	DAE, Calibration Date
ELI V8.0 (20deg probe tilt) - 2118	H51T72N5 , 2023-Sep-27	EX3DV4 - SN7555, 2023-07-19	DAE4 Sn1585, 2023-07-14

Scan Setup

	Area Scan	Zoom Scan
Grid Extents [mm]	45.0 x 90.0	22.0 x 22.0 x 22.0
Grid Steps [mm]	7.5 x 7.5	3.4 x 3.4 x 1.4
Sensor Surface [mm]	3.0	1.4

Measurement Results

	Area Scan	Zoom Scan
Date	2023-09-27	2023-09-27
psSAR1g [W/kg]	25.0	28.7
psSAR10g [W/kg]	4.93	5.30
psAPD (1.0cm2, sq) [W/m2]		287
psAPD (4.0cm2, sq) [W/m2]		129
Power Drift [dB]	-0.11	-0.01



Plots of System Verification

Measurement Report

S08 PD_System Check_10 GHz_2023.10.05

Device under Test Properties

Model, Manufacturer	Dimensions [mm]	IMEI	DUT Type
SPEAG, 5G Verification Source 10 GHz	100.0 x 100.0 x 170.0	SN: 1025	

Exposure Conditions

Phantom Section	Position, Test Distance [mm]	Band	Group, UID	Frequency [MHz], Channel Number	Conversion Factor
5G Air	FRONT, 10.00	Validation band	CW, 0--	10000.0, 10000	1.0

Hardware Setup

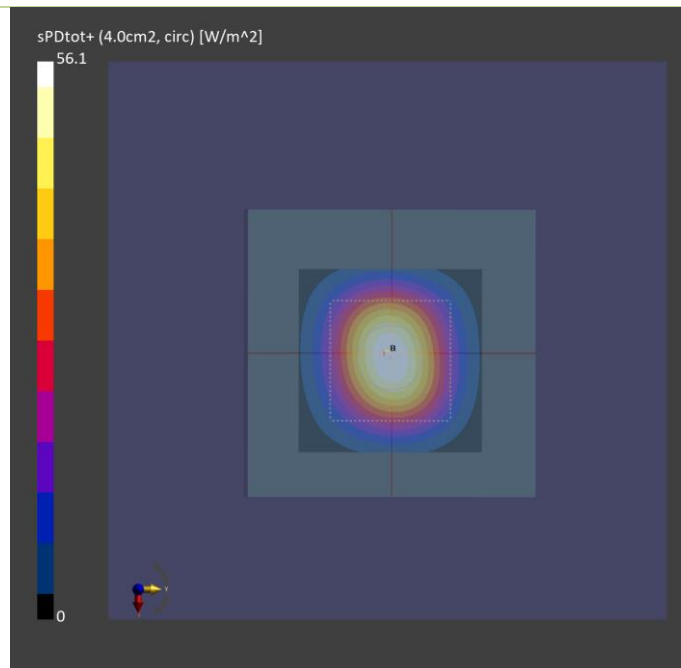
Phantom	Medium	Probe, Calibration Date	DAE, Calibration Date
mmWave- 1030	--Air--	EUmmWV4 - SN9615_F1-55GHz, 2023-07-10	DAE4 Sn1761, 2022-12-08

Scan Setup

	5G Scan
Grid Extents [mm]	60.0 x 60.0
Grid Steps [lambda]	0.125 x 0.125
Sensor Surface [mm]	10.0

Measurement Results

	5G Scan
Date	2023-10-05
Avg. Area [cm ²]	4.00
psPDn+ [W/m ²]	55.9
psPDtot+ [W/m ²]	56.1
psPDmod+ [W/m ²]	56.4
E _{max} [V/m]	151
Power Drift [dB]	-0.01



Appendix B. Plots of Measurement

The SAR plots for highest measured SAR in each exposure configuration, wireless mode and frequency band combination are shown as follows.

Plots of Measurement

Measurement Report

P01 WLAN2.4G_802.11n HT40_Rear Face_0mm_Ch11_Sample AWAN_Ant 0+1

Device under Test Properties

Model, Manufacturer	Dimensions [mm]	IMEI	DUT Type
BEDV-WTW-P23080241	360.0 x 255.0 x 10.0		Tablet

Exposure Conditions

Phantom Section, TSL	Position, Test Distance [mm]	Band	Group, UID	Frequency [MHz], Channel Number	Conversion Factor	TSL Conductivity [S/m]	TSL Permittivity
Flat,	Rear Face, 0.00	WLAN 2.4GHz	WLAN, 10599-AAD	2462.000, 11	7.67	1.80	37.6

Hardware Setup

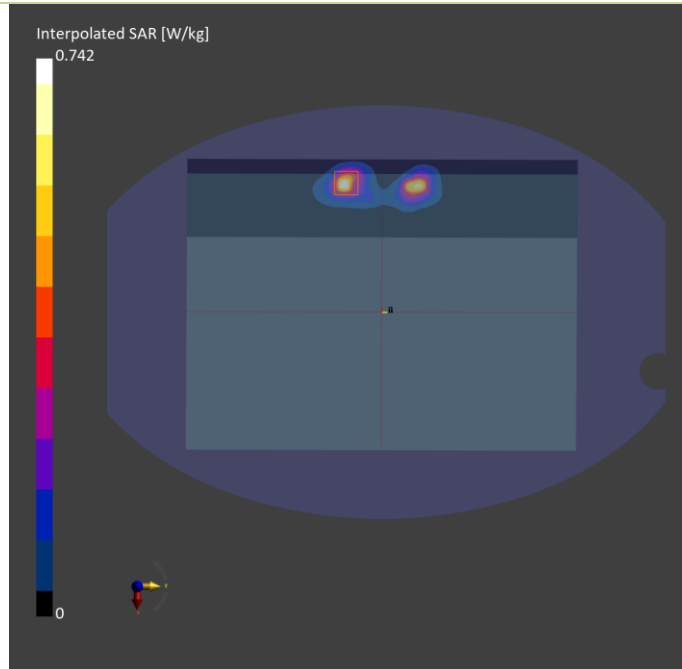
Phantom	TSL, Measured Date	Probe, Calibration Date	DAE, Calibration Date
ELI V8.0 (20deg probe tilt) - 2118	H06T27N5, 2023-Sep-26	EX3DV4 - SN7555, 2023-07-19	DAE4 Sn1585, 2023-07-14

Scan Setup

	Area Scan	Zoom Scan
Grid Extents [mm]	72.0 x 360.0	30.0 x 30.0 x 30.0
Grid Steps [mm]	12.0 x 12.0	5.0 x 5.0 x 5.0
Sensor Surface [mm]	3.0	1.4

Measurement Results

	Area Scan	Zoom Scan
Date	2023-09-26	2023-09-26
psSAR1g [W/kg]	0.512	0.584
psSAR10g [W/kg]	0.219	0.232
Power Drift [dB]	-0.08	-0.01
M2/M1 [%]		43.7
Dist 3dB Peak [mm]		6.5



Plots of Measurement

Measurement Report

P02 WLAN5.3G_802.11ac VHT160_Bottom of Laptop_0mm_Ch50_Sample AWAN_Ant 0+1

Device under Test Properties

Model, Manufacturer	Dimensions [mm]	IMEI	DUT Type
BEDV-WTW-P23080241	360.0 x 255.0 x 10.0		Laptop

Exposure Conditions

Phantom Section, TSL	Position, Test Distance [mm]	Band	Group, UID	Frequency [MHz], Channel Number	Conversion Factor	TSL Conductivity [S/m]	TSL Permittivity
Flat,	Bottom of Laptop, 0.00	WLAN 5GHz	WLAN, 10554-AAE	5250.000, 50	5.67	4.63	37.1

Hardware Setup

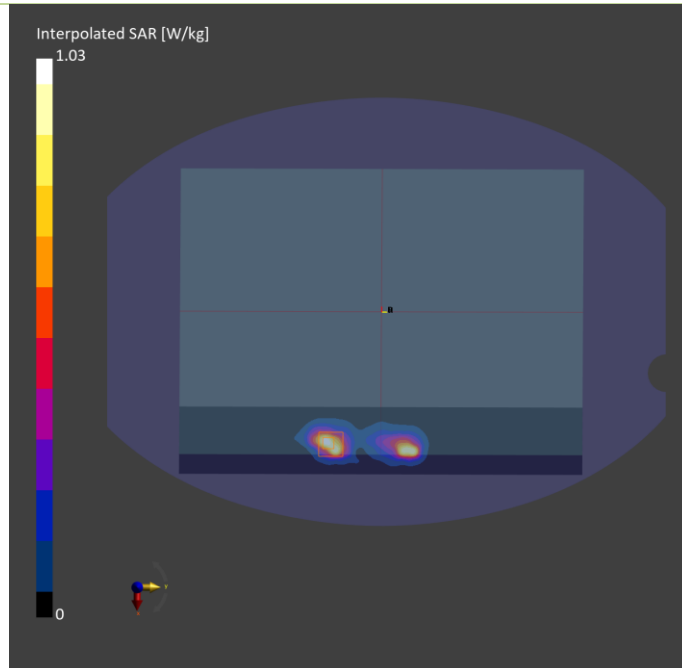
Phantom	TSL, Measured Date	Probe, Calibration Date	DAE, Calibration Date
ELI V8.0 (20deg probe tilt) - 2118	H51T72N5, 2023-Sep-27	EX3DV4 - SN7555, 2023-07-19	DAE4 Sn1585, 2023-07-14

Scan Setup

	Area Scan	Zoom Scan
Grid Extents [mm]	60.0 x 360.0	24.0 x 24.0 x 22.0
Grid Steps [mm]	10.0 x 10.0	4.0 x 4.0 x 1.4
Sensor Surface [mm]	3.0	1.4

Measurement Results

	Area Scan	Zoom Scan
Date	2023-09-27	2023-09-27
psSAR1g [W/kg]	0.709	0.802
psSAR10g [W/kg]	0.260	0.272
Power Drift [dB]	0.03	-0.08
M2/M1 [%]		63.4
Dist 3dB Peak [mm]		4.9



Plots of Measurement

Measurement Report

P03 WLAN5.6G_802.11ac VHT80_Rear Face_0mm_Ch138_Sample AWAN_Ant 0+1

Device under Test Properties

Model, Manufacturer	Dimensions [mm]	IMEI	DUT Type
BEDV-WTW-P23080241	360.0 x 255.0 x 10.0		Tablet

Exposure Conditions

Phantom Section, TSL	Position, Test Distance [mm]	Band	Group, UID	Frequency [MHz], Channel Number	Conversion Factor	TSL Conductivity [S/m]	TSL Permittivity
Flat,	Rear Face, 0.00	WLAN 5GHz	WLAN, 10544-AAC	5690.0, 138	4.91	5.07	36.1

Hardware Setup

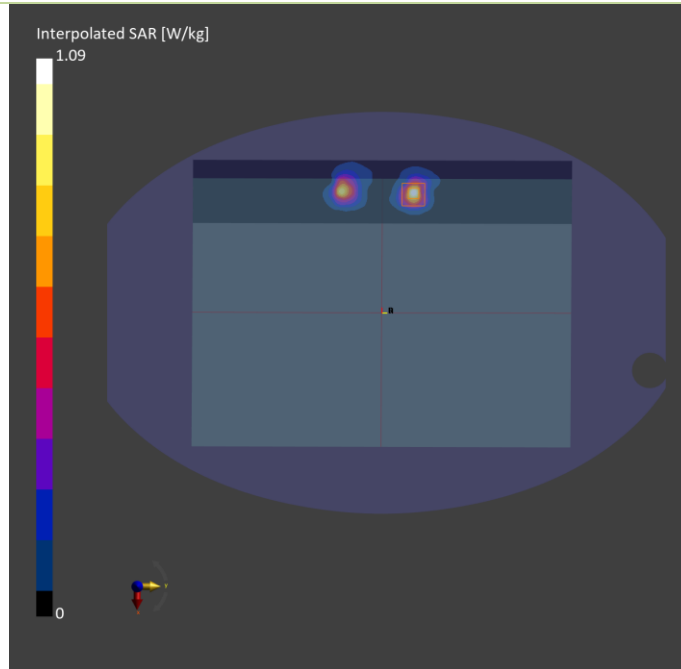
Phantom	TSL, Measured Date	Probe, Calibration Date	DAE, Calibration Date
ELI V8.0 (20deg probe tilt) - 2118	H51T72N5, 2023-Sep-28	EX3DV4 - SN7555, 2023-07-19	DAE4 Sn1585, 2023-07-14

Scan Setup

	Area Scan	Zoom Scan
Grid Extents [mm]	60.0 x 360.0	24.0 x 24.0 x 22.0
Grid Steps [mm]	10.0 x 10.0	4.0 x 4.0 x 1.4
Sensor Surface [mm]	3.0	1.4

Measurement Results

	Area Scan	Zoom Scan
Date	2023-09-28	2023-09-28
psSAR1g [W/kg]	0.713	0.736
psSAR10g [W/kg]	0.230	0.243
Power Drift [dB]	-0.08	-0.05
M2/M1 [%]		57.8
Dist 3dB Peak [mm]		5.7



Plots of Measurement

Measurement Report

P04 WLAN5.8G_802.11ac VHT80_Rear Face_0mm_Ch155_Sample AWAN_Ant 0+1

Device under Test Properties

Model, Manufacturer	Dimensions [mm]	IMEI	DUT Type
BEDV-WTW-P23080241	360.0 x 255.0 x 10.0		Tablet

Exposure Conditions

Phantom Section, TSL	Position, Test Distance [mm]	Band	Group, UID	Frequency [MHz], Channel Number	Conversion Factor	TSL Conductivity [S/m]	TSL Permittivity
Flat,	Rear Face, 0.00	WLAN 5GHz	WLAN, 10544-AAC	5775.0, 155	5.16	5.07	35.8

Hardware Setup

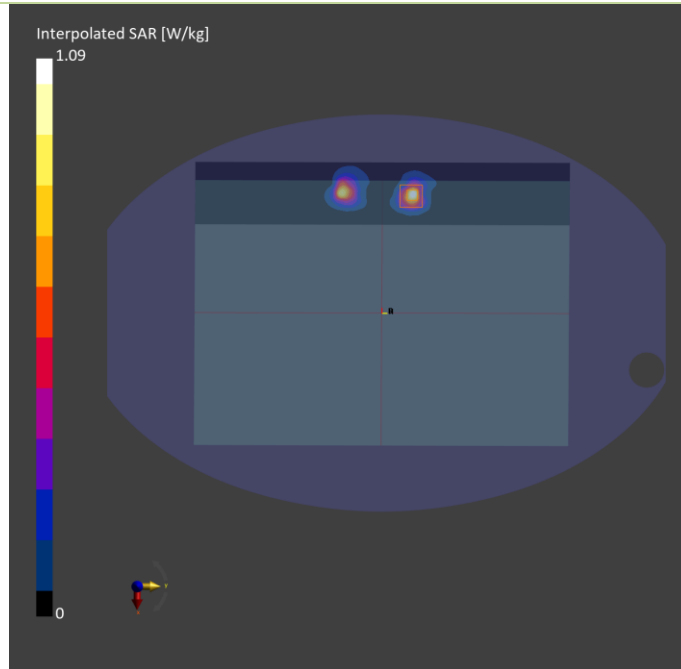
Phantom	TSL, Measured Date	Probe, Calibration Date	DAE, Calibration Date
ELI V8.0 (20deg probe tilt) - 2118	H51T72N5, 2023-Sep-28	EX3DV4 - SN7555, 2023-07-19	DAE4 Sn1585, 2023-07-14

Scan Setup

	Area Scan	Zoom Scan
Grid Extents [mm]	60.0 x 360.0	24.0 x 24.0 x 22.0
Grid Steps [mm]	10.0 x 10.0	4.0 x 4.0 x 1.4
Sensor Surface [mm]	3.0	1.4

Measurement Results

	Area Scan	Zoom Scan
Date	2023-09-28	2023-09-28
psSAR1g [W/kg]	0.707	0.782
psSAR10g [W/kg]	0.221	0.238
Power Drift [dB]	-0.04	-0.02
M2/M1 [%]		62.3
Dist 3dB Peak [mm]		5.6



Plots of Measurement

Measurement Report

P05 WLAN5.9G_802.11ac VHT160_Rear Face_0mm_Ch163_Sample AWAN_Ant 0

Device under Test Properties

Model, Manufacturer	Dimensions [mm]	IMEI	DUT Type
BEDV-WTW-P23080241	360.0 x 255.0 x 10.0		Tablet

Exposure Conditions

Phantom Section, TSL	Position, Test Distance [mm]	Band	Group, UID	Frequency [MHz], Channel Number	Conversion Factor	TSL Conductivity [S/m]	TSL Permittivity
Flat,	Rear Face, 0.00	WLAN 5GHz	WLAN, 10554-AAE	5815.000, 163	5.16	5.20	35.2

Hardware Setup

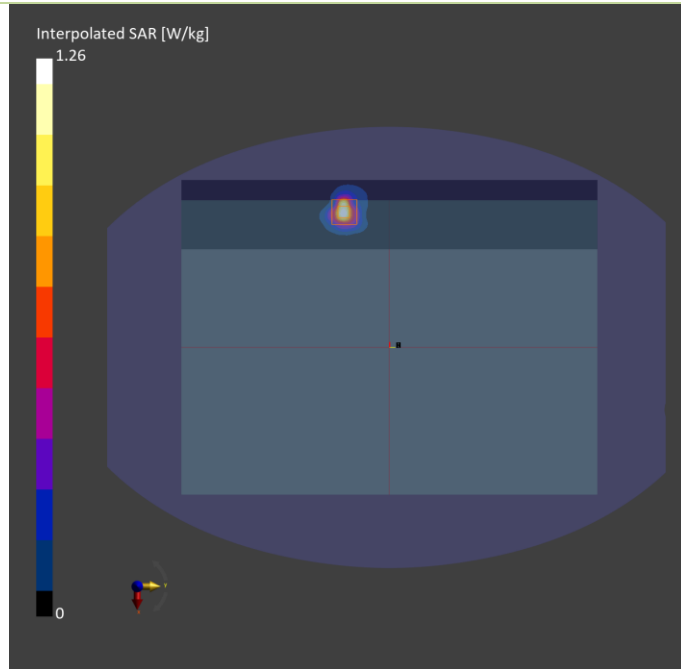
Phantom	TSL, Measured Date	Probe, Calibration Date	DAE, Calibration Date
ELI V8.0 (20deg probe tilt) - 2118	H51T72N5, 2023-Oct-02	EX3DV4 - SN7555, 2023-07-19	DAE4 Sn1585, 2023-07-14

Scan Setup

	Area Scan	Zoom Scan
Grid Extents [mm]	60.0 x 360.0	24.0 x 24.0 x 22.0
Grid Steps [mm]	10.0 x 10.0	4.0 x 4.0 x 1.4
Sensor Surface [mm]	3.0	1.4

Measurement Results

	Area Scan	Zoom Scan
Date	2023-10-02	2023-10-02
psSAR1g [W/kg]	0.868	1.06
psSAR10g [W/kg]	0.271	0.307
Power Drift [dB]	-0.01	0.07
M2/M1 [%]		56.6
Dist 3dB Peak [mm]		5.7



Plots of Measurement

Measurement Report

P06 BT_BDR_Rear Face_0mm_Ch0_Sample AWAN_Ant 1

Device under Test Properties

Model, Manufacturer	Dimensions [mm]	IMEI	DUT Type
BEDV-WTW-P23080241	360.0 x 255.0 x 10.0		Tablet

Exposure Conditions

Phantom Section, TSL	Position, Test Distance [mm]	Band	Group, UID	Frequency [MHz], Channel Number	Conversion Factor	TSL Conductivity [S/m]	TSL Permittivity
Flat,	Rear Face, 0.00	ISM 2.4 GHz Band	Bluetooth, 10032-CAA	2402.000, 0	7.67	1.76	37.7

Hardware Setup

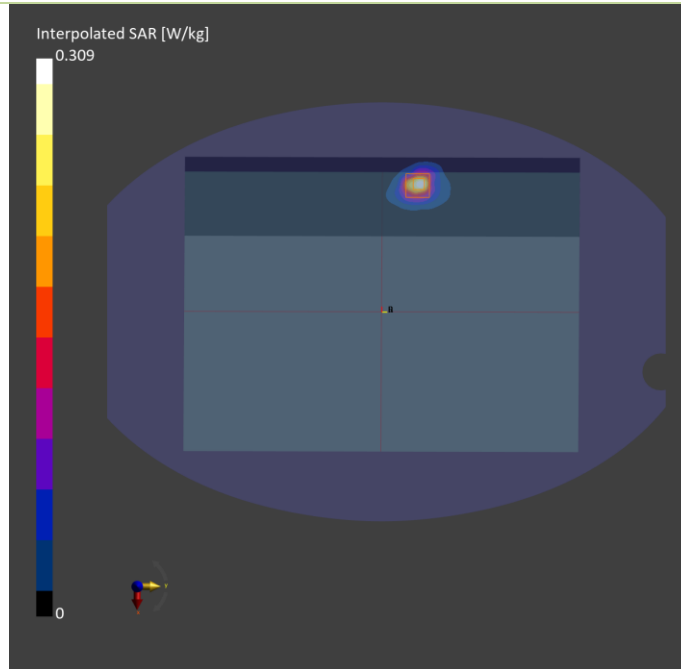
Phantom	TSL, Measured Date	Probe, Calibration Date	DAE, Calibration Date
ELI V8.0 (20deg probe tilt) - 2118	H06T27N5, 2023-Sep-26	EX3DV4 - SN7555, 2023-07-19	DAE4 Sn1585, 2023-07-14

Scan Setup

	Area Scan	Zoom Scan
Grid Extents [mm]	72.0 x 360.0	30.0 x 30.0 x 30.0
Grid Steps [mm]	12.0 x 12.0	5.0 x 5.0 x 5.0
Sensor Surface [mm]	3.0	1.4

Measurement Results

	Area Scan	Zoom Scan
Date	2023-09-26	2023-09-26
psSAR1g [W/kg]	0.229	0.272
psSAR10g [W/kg]	0.100	0.107
Power Drift [dB]	-0.02	-0.02
M2/M1 [%]		44.1
Dist 3dB Peak [mm]		6.5



Plots of Measurement

Test Laboratory: Bureau Veritas ADT SAR/HAC Testing Lab

Date: 2023/10/02

P07 NFC_Bottom of Laptop_0mm_Sample AWAN_13.56 MHz

DUT: BEDV-WTW-P23080241

Communication System: UID 0, CW; Frequency: 13.56 MHz; Duty Cycle: 1:1

Medium: H13_1002 Medium parameters used (interpolated): $f = 13.56$ MHz; $\sigma = 0.727$ S/m; $\epsilon_r = 55.81$; $\rho = 1000$ kg/m³

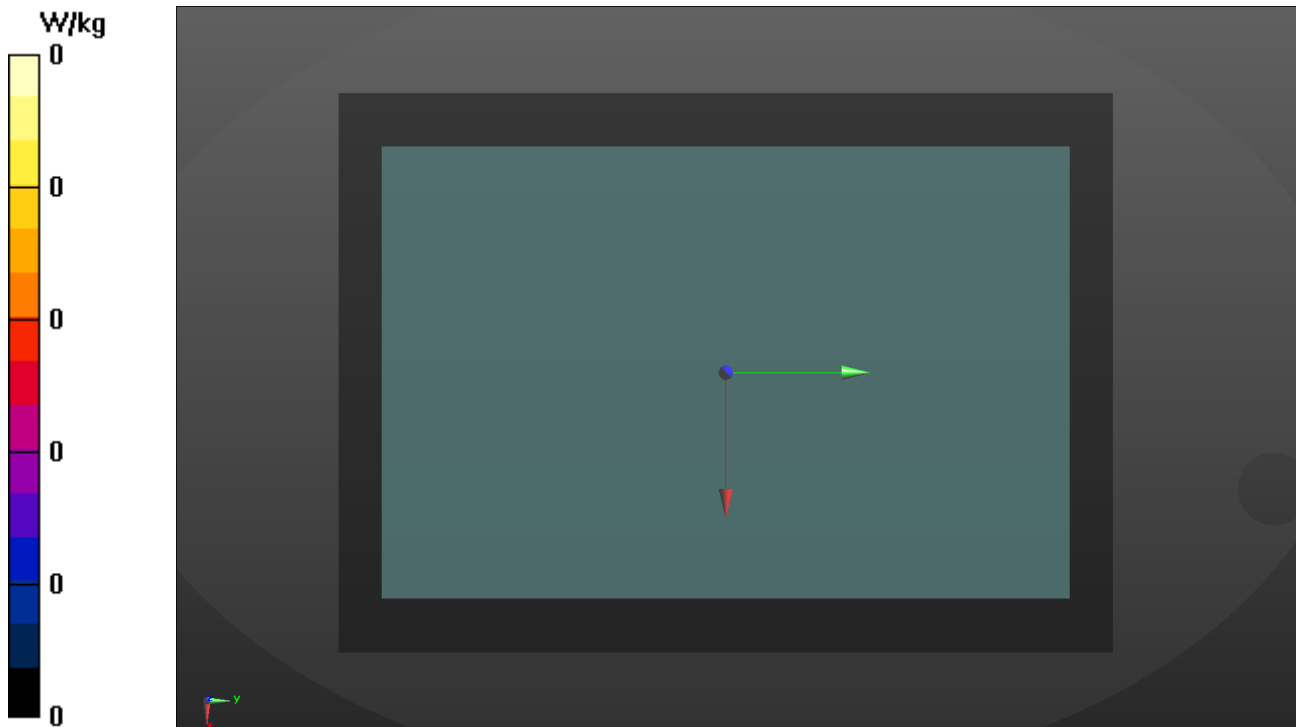
Ambient Temperature : 22.4 °C ; Liquid Temperature : 21.5 °C

DASY5 Configuration:

- Probe: EX3DV4 - SN7720; ConvF(17.02, 17.02, 17.02) @ 13.56 MHz; Calibrated: 2023/03/23
- Sensor-Surface: 1.4mm (Mechanical Surface Detection)
- Electronics: DAE4 Sn1762; Calibrated: 2022/12/08
- Phantom: ELI_Phantom_1204; Type: QD OVA 002 Ax; Serial: 1204
- Measurement SW: DASY52, Version 52.10 (4); SEMCAD X Version 14.6.14 (7501)

Area Scan (281x361x1): Interpolated grid: dx=1.000 mm, dy=1.000 mm

Maximum value of SAR (interpolated) = 0 W/kg



Plots of Measurement

Measurement Report

P08 UNII-5_802.11ax HE160_Bottom of Laptop_0mm_Ch15_Sample AWAN_Ant 0

Device under Test Properties

Model, Manufacturer	Dimensions [mm]	IMEI	DUT Type
BEDV-WTW-P23080241	360.0 x 255.0 x 10.0		Laptop

Exposure Conditions

Phantom Section, TSL	Position, Test Distance [mm]	Band	Group, UID	Frequency [MHz], Channel Number	Conversion Factor	TSL Conductivity [S/m]	TSL Permittivity
Flat,	Bottom of Laptop, 0.00	U-NII-5	WLAN, 10755-AAC	6025.000, 15	5.52	5.52	35.8

Hardware Setup

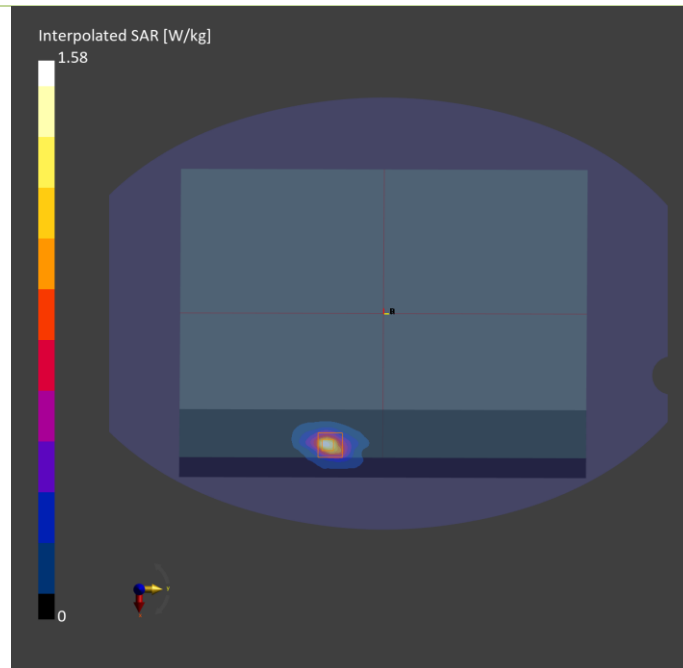
Phantom	TSL, Measured Date	Probe, Calibration Date	DAE, Calibration Date
ELI V8.0 (20deg probe tilt) - 2118	H51T72N5 , 2023-Sep-27	EX3DV4 - SN7555, 2023-07-19	DAE4 Sn1585, 2023-07-14

Scan Setup

	Area Scan	Zoom Scan
Grid Extents [mm]	60.0 x 360.0	22.0 x 22.0 x 22.0
Grid Steps [mm]	7.5 x 7.5	3.4 x 3.4 x 1.4
Sensor Surface [mm]	3.0	1.4

Measurement Results

	Area Scan	Zoom Scan
Date	2023-09-27	2023-09-27
psSAR1g [W/kg]	1.09	1.14
psSAR10g [W/kg]	0.349	0.329
psAPD (1.0cm2, sq) [W/m2]		11.4
psAPD (4.0cm2, sq) [W/m2]		7.69
Power Drift [dB]	-0.12	-0.02
M2/M1 [%]		52.3
Dist 3dB Peak [mm]		5.7



Plots of Measurement

Measurement Report

P08 UNII-5 802.11ax HE160_Bottom of Laptop_0mm_Ch15_Sample AWAN_Ant 0

Device under Test Properties

Model, Manufacturer	Dimensions [mm]	IMEI	DUT Type
BEDV-WTW-P23080241	310.0 x 260.0 x 15.0		Laptop

Exposure Conditions

Phantom Section	Position, Test Distance [mm]	Band	Group, UID	Frequency [MHz], Channel Number	Conversion Factor
5G Air	Bottom of Laptop, 0.00	U-NII-5	WLAN, 10755-AAC	6025.0, 15	1.0

Hardware Setup

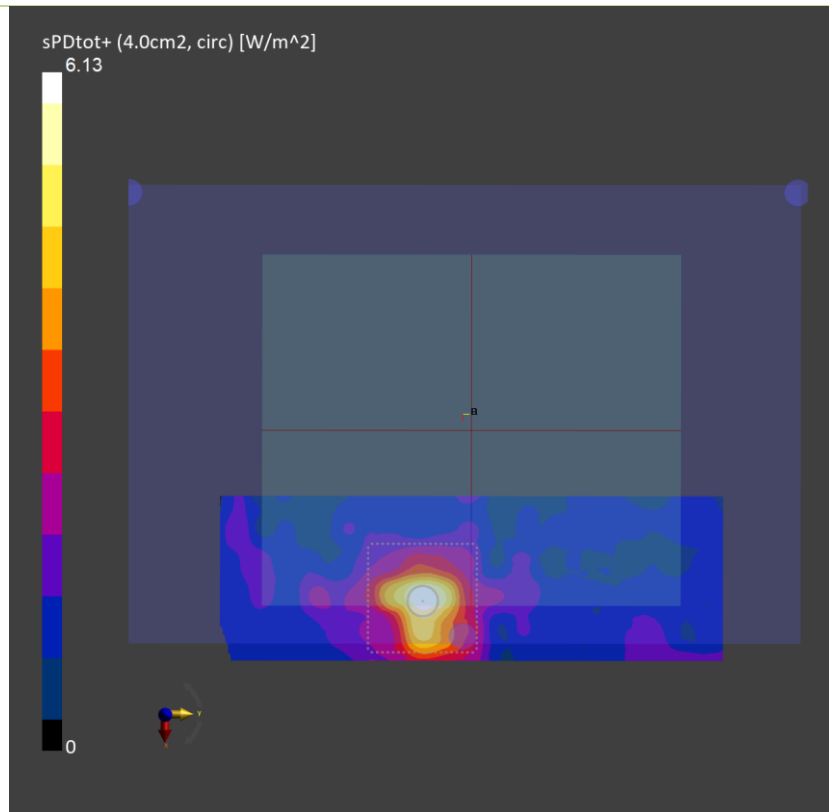
Phantom	Medium	Probe, Calibration Date	DAE, Calibration Date
mmWave- 1030	---Air	EUmWV4 - SN9615_F1-55GHz, 2023-07-10	DAE4 Sn1761, 2022-12-08

Scan Setup

	5G Scan
Grid Extents [mm]	100.0 x 100.0
Grid Steps [lambda]	0.0502 x 0.0502
Sensor Surface [mm]	2.0
MAIA	Y

Measurement Results

	5G Scan
Date	2023-10-05
Avg. Area [cm ²]	4.00
psPDn+ [W/m ²]	3.78
psPDtot+ [W/m ²]	5.71
psPDmod+ [W/m ²]	12.1
E _{max} [V/m]	88.0
Power Drift [dB]	-0.05



Appendix D. Maximum Target Conducted Power

The maximum conducted average power (Unit: dBm) including tune-up tolerance is shown as below.

Tune-up Power (Full)_Laptop Mode							
WLAN 2.4GHz							
Mode	Channel	Frequency	SISO Ant 0 Max Tune up	SISO Ant 1 Max Tune up	MIMO Ant 0 Tune up	MIMO Ant 1 Tune up	MIMO Ant 0+1 Max Tune up
802.11b	1	2412	12.5	12.5			
	6	2437	12.5	12.5			
	11	2462	12.5	12.5			
	12	2467	12.5	12.5			
	13	2472	12.5	12.5			
802.11g	1	2412	12.5	12.5			
	6	2437	12.5	12.5			
	11	2462	12.5	12.5			
	12	2467	12.5	12.5			
	13	2472	12.5	12.5			
802.11n HT20	1	2412	12.5	12.5	12.5	12.5	15.5
	6	2437	12.5	12.5	12.5	12.5	15.5
	11	2462	12.5	12.5	12.5	12.5	15.5
	12	2467	12.5	12.5	12.5	12.5	15.5
	13	2472	12.5	12.5	12.5	12.5	15.5
802.11n HT40	3	2422	12.5	12.5	12.5	12.5	15.5
	6	2437	12.5	12.5	12.5	12.5	15.5
	9	2452	12.5	12.5	12.5	12.5	15.5
	10	2457	12.5	12.5	12.5	12.5	15.5
	11	2462	12.5	12.5	12.5	12.5	15.5
802.11ax HE20	1	2412	12.5	12.5	12.5	12.5	15.5
	6	2437	12.5	12.5	12.5	12.5	15.5
	11	2462	12.5	12.5	12.5	12.5	15.5
	12	2467	12.5	12.5	12.5	12.5	15.5
	13	2472	12.5	12.5	12.5	12.5	15.5
802.11ax HE40	3	2422	12.5	12.5	12.5	12.5	15.5
	6	2437	12.5	12.5	12.5	12.5	15.5
	9	2452	12.5	12.5	12.5	12.5	15.5
	10	2457	12.5	12.5	12.5	12.5	15.5
	11	2462	12.5	12.5	12.5	12.5	15.5



Tune-up Power (Full)_Laptop Mode				
Bluetooth				
Mode	Channel	Frequency		Ant 1 Max Tune-up
BR / EDR	0	2402		10.0
	39	2441		10.0
	78	2480		10.0
LE	0	2402		10.0
	19	2440		10.0
	39	2480		10.0



Tune-up Power (Full)_Laptop Mode							
WLAN 5.2GHz							
Mode	Channel	Frequency	SISO Ant 0 Max Tune up	SISO Ant 1 Max Tune up	MIMO Ant 0 Tune up	MIMO Ant 1 Tune up	MIMO Ant 0+1 Max Tune up
802.11a	36	5180	10.5	10.5			
	40	5200	10.5	10.5			
	44	5220	10.5	10.5			
	48	5240	10.5	10.5			
802.11n HT20	36	5180	10.5	10.5	10.5	10.5	13.5
	40	5200	10.5	10.5	10.5	10.5	13.5
	44	5220	10.5	10.5	10.5	10.5	13.5
	48	5240	10.5	10.5	10.5	10.5	13.5
802.11n HT40	38	5190	10.5	10.5	10.5	10.5	13.5
	46	5230	10.5	10.5	10.5	10.5	13.5
802.11ac VHT20	36	5180	10.5	10.5	10.5	10.5	13.5
	40	5200	10.5	10.5	10.5	10.5	13.5
	44	5220	10.5	10.5	10.5	10.5	13.5
	48	5240	10.5	10.5	10.5	10.5	13.5
802.11ac VHT40	38	5190	10.5	10.5	10.5	10.5	13.5
	46	5230	10.5	10.5	10.5	10.5	13.5
802.11ac VHT80	42	5210	10.5	10.5	10.5	10.5	13.5
802.11ax HE20	36	5180	10.5	10.5	10.5	10.5	13.5
	40	5200	10.5	10.5	10.5	10.5	13.5
	44	5220	10.5	10.5	10.5	10.5	13.5
	48	5240	10.5	10.5	10.5	10.5	13.5
802.11ax HE40	38	5190	10.5	10.5	10.5	10.5	13.5
	46	5230	10.5	10.5	10.5	10.5	13.5
802.11ax HE80	42	5210	10.5	10.5	10.5	10.5	13.5

Tune-up Power (Full)_Laptop Mode							
WLAN 5.3GHz							
Mode	Channel	Frequency	SISO Ant 0 Max Tune up	SISO Ant 1 Max Tune up	MIMO Ant 0 Tune up	MIMO Ant 1 Tune up	MIMO Ant 0+1 Max Tune up
802.11a	52	5260	10.5	10.5			
	56	5280	10.5	10.5			
	60	5300	10.5	10.5			
	64	5320	10.5	10.5			
802.11n HT20	52	5260	10.5	10.5	10.5	10.5	13.5
	56	5280	10.5	10.5	10.5	10.5	13.5
	60	5300	10.5	10.5	10.5	10.5	13.5
	64	5320	10.5	10.5	10.5	10.5	13.5
802.11n HT40	54	5270	10.5	10.5	10.5	10.5	13.5
	62	5310	10.5	10.5	10.5	10.5	13.5
802.11ac VHT20	52	5260	10.5	10.5	10.5	10.5	13.5
	56	5280	10.5	10.5	10.5	10.5	13.5
	60	5300	10.5	10.5	10.5	10.5	13.5
	64	5320	10.5	10.5	10.5	10.5	13.5
802.11ac VHT40	54	5270	10.5	10.5	10.5	10.5	13.5
	62	5310	10.5	10.5	10.5	10.5	13.5
802.11ac VHT80	58	5290	10.5	10.5	10.5	10.5	13.5
802.11ac VHT160	50	5250	10.5	10.5	10.5	10.5	13.5
802.11ax HE20	52	5260	10.5	10.5	10.5	10.5	13.5
	56	5280	10.5	10.5	10.5	10.5	13.5
	60	5300	10.5	10.5	10.5	10.5	13.5
	64	5320	10.5	10.5	10.5	10.5	13.5
802.11ax HE40	54	5270	10.5	10.5	10.5	10.5	13.5
	62	5310	10.5	10.5	10.5	10.5	13.5
802.11ax HE80	58	5290	10.5	10.5	10.5	10.5	13.5
802.11ax HE160	50	5250	10.5	10.5	10.5	10.5	13.5

Tune-up Power (Full)_Laptop Mode							
WLAN 5.6GHz							
Mode	Channel	Frequency	SISO Ant 0 Max Tune up	SISO Ant 1 Max Tune up	MIMO Ant 0 Tune up	MIMO Ant 1 Tune up	MIMO Ant 0+1 Max Tune up
802.11a	100	5500	10.5	10.5			
	116	5580	10.5	10.5			
	120	5600	10.5	10.5			
	124	5620	10.5	10.5			
	132	5660	10.5	10.5			
	140	5700	10.5	10.5			
	144	5720	10.5	10.5			
802.11n HT20	100	5500	10.5	10.5	10.5	10.5	13.5
	116	5580	10.5	10.5	10.5	10.5	13.5
	120	5600	10.5	10.5	10.5	10.5	13.5
	124	5620	10.5	10.5	10.5	10.5	13.5
	132	5660	10.5	10.5	10.5	10.5	13.5
	140	5700	10.5	10.5	10.5	10.5	13.5
	144	5720	10.5	10.5	10.5	10.5	13.5
802.11n HT40	102	5510	10.5	10.5	10.5	10.5	13.5
	110	5550	10.5	10.5	10.5	10.5	13.5
	118	5590	10.5	10.5	10.5	10.5	13.5
	126	5630	10.5	10.5	10.5	10.5	13.5
	134	5670	10.5	10.5	10.5	10.5	13.5
	142	5710	10.5	10.5	10.5	10.5	13.5
802.11ac VHT20	100	5500	10.5	10.5	10.5	10.5	13.5
	116	5580	10.5	10.5	10.5	10.5	13.5
	120	5600	10.5	10.5	10.5	10.5	13.5
	124	5620	10.5	10.5	10.5	10.5	13.5
	132	5660	10.5	10.5	10.5	10.5	13.5
	140	5700	10.5	10.5	10.5	10.5	13.5
	144	5720	10.5	10.5	10.5	10.5	13.5
802.11ac VHT40	102	5510	10.5	10.5	10.5	10.5	13.5
	110	5550	10.5	10.5	10.5	10.5	13.5
	118	5590	10.5	10.5	10.5	10.5	13.5
	126	5630	10.5	10.5	10.5	10.5	13.5
	134	5670	10.5	10.5	10.5	10.5	13.5
	142	5710	10.5	10.5	10.5	10.5	13.5
802.11ac VHT80	106	5530	10.5	10.5	10.5	10.5	13.5
	122	5610	10.5	10.5	10.5	10.5	13.5
	138	5690	10.5	10.5	10.5	10.5	13.5
802.11ac VHT160	114	5570	10.0	10.0	10.0	10.0	13.0
802.11ax HE20	100	5500	10.5	10.5	10.5	10.5	13.5
	116	5580	10.5	10.5	10.5	10.5	13.5
	120	5600	10.5	10.5	10.5	10.5	13.5
	124	5620	10.5	10.5	10.5	10.5	13.5
	132	5660	10.5	10.5	10.5	10.5	13.5
	140	5700	10.5	10.5	10.5	10.5	13.5
	144	5720	10.5	10.5	10.5	10.5	13.5
802.11ax HE40	102	5510	10.5	10.5	10.5	10.5	13.5
	110	5550	10.5	10.5	10.5	10.5	13.5
	118	5590	10.5	10.5	10.5	10.5	13.5
	126	5630	10.5	10.5	10.5	10.5	13.5
	134	5670	10.5	10.5	10.5	10.5	13.5
	142	5710	10.5	10.5	10.5	10.5	13.5
802.11ax HE80	106	5530	10.5	10.5	10.5	10.5	13.5
	122	5610	10.5	10.5	10.5	10.5	13.5
	138	5690	10.5	10.5	10.5	10.5	13.5
802.11ax HE160	114	5570	10.0	10.0	10.0	10.0	13.0

Tune-up Power (Full)_Laptop Mode							
WLAN 5.8GHz							
Mode	Channel	Frequency	SISO Ant 0 Max Tune up	SISO Ant 1 Max Tune up	MIMO Ant 0 Tune up	MIMO Ant 1 Tune up	MIMO Ant 0+1 Max Tune up
802.11a	149	5745	10.5	10.5			
	153	5765	10.5	10.5			
	157	5785	10.5	10.5			
	161	5805	10.5	10.5			
	165	5825	10.5	10.5			
802.11n HT20	149	5745	10.5	10.5	10.5	10.5	13.5
	153	5765	10.5	10.5	10.5	10.5	13.5
	157	5785	10.5	10.5	10.5	10.5	13.5
	161	5805	10.5	10.5	10.5	10.5	13.5
	165	5825	10.5	10.5	10.5	10.5	13.5
802.11n HT40	151	5755	10.5	10.5	10.5	10.5	13.5
	159	5795	10.5	10.5	10.5	10.5	13.5
802.11ac VHT20	149	5745	10.5	10.5	10.5	10.5	13.5
	153	5765	10.5	10.5	10.5	10.5	13.5
	157	5785	10.5	10.5	10.5	10.5	13.5
	161	5805	10.5	10.5	10.5	10.5	13.5
	165	5825	10.5	10.5	10.5	10.5	13.5
802.11ac VHT40	151	5755	10.5	10.5	10.5	10.5	13.5
	159	5795	10.5	10.5	10.5	10.5	13.5
802.11ac VHT80	155	5775	10.5	10.5	10.5	10.5	13.5
802.11ax HE20	149	5745	10.5	10.5	10.5	10.5	13.5
	153	5765	10.5	10.5	10.5	10.5	13.5
	157	5785	10.5	10.5	10.5	10.5	13.5
	161	5805	10.5	10.5	10.5	10.5	13.5
	165	5825	10.5	10.5	10.5	10.5	13.5
802.11ax HE40	151	5755	10.5	10.5	10.5	10.5	13.5
	159	5795	10.5	10.5	10.5	10.5	13.5
802.11ax HE80	155	5775	10.5	10.5	10.5	10.5	13.5

Tune-up Power (Full)_Laptop Mode							
WLAN 5.9GHz							
Mode	Channel	Frequency	SISO Ant 0 Max Tune up	SISO Ant 1 Max Tune up	MIMO Ant 0 Tune up	MIMO Ant 1 Tune up	MIMO Ant 0+1 Max Tune up
802.11a	169	5845	10.5	10.5			
	173	5865	10.5	10.5			
	177	5885	10.5	10.5			
802.11n HT20	169	5845	10.5	10.5	10.5	10.5	13.5
	173	5865	10.5	10.5	10.5	10.5	13.5
	177	5885	10.5	10.5	10.5	10.5	13.5
802.11n HT40	167	5835	10.5	10.5	10.5	10.5	13.5
	175	5875	10.5	10.5	10.5	10.5	13.5
802.11ac VHT20	169	5845	10.5	10.5	10.5	10.5	13.5
	173	5865	10.5	10.5	10.5	10.5	13.5
	177	5885	10.5	10.5	10.5	10.5	13.5
802.11ac VHT40	167	5835	10.5	10.5	10.5	10.5	13.5
	175	5875	10.5	10.5	10.5	10.5	13.5
802.11ac VHT80	171	5855	10.5	10.5	10.5	10.5	13.5
802.11ac VHT160	163	5815	10.5	10.5	10.5	10.5	13.5
802.11ax HE20	169	5845	10.5	10.5	10.5	10.5	13.5
	173	5865	10.5	10.5	10.5	10.5	13.5
	177	5885	10.5	10.5	10.5	10.5	13.5
802.11ax HE40	167	5835	10.5	10.5	10.5	10.5	13.5
	175	5875	10.5	10.5	10.5	10.5	13.5
802.11ax HE80	171	5855	10.5	10.5	10.5	10.5	13.5
802.11ax HE160	163	5815	10.5	10.5	10.5	10.5	13.5

Tune-up Power (Full)_Laptop Mode							
UNII-5							
Mode	Channel	Frequency	SISO Ant 0 Max Tune up	SISO Ant 1 Max Tune up	MIMO Ant 0 Tune up	MIMO Ant 1 Tune up	MIMO Ant 0+1 Max Tune up
802.11ax HE20	1	5955	11.0	11.0	11.0	11.0	14.0
	5	5975	11.0	11.0	11.0	11.0	14.0
	9	5995	11.0	11.0	11.0	11.0	14.0
	13	6015	11.0	11.0	11.0	11.0	14.0
	17	6035	11.0	11.0	11.0	11.0	14.0
	21	6055	11.0	11.0	11.0	11.0	14.0
	25	6075	11.0	11.0	11.0	11.0	14.0
	29	6095	11.0	11.0	11.0	11.0	14.0
	33	6115	11.0	11.0	11.0	11.0	14.0
	37	6135	11.0	11.0	11.0	11.0	14.0
	41	6155	11.0	11.0	11.0	11.0	14.0
	45	6175	11.0	11.0	11.0	11.0	14.0
	49	6195	11.0	11.0	11.0	11.0	14.0
	53	6215	11.0	11.0	11.0	11.0	14.0
	57	6235	11.0	11.0	11.0	11.0	14.0
	61	6255	11.0	11.0	11.0	11.0	14.0
	65	6275	11.0	11.0	11.0	11.0	14.0
	69	6295	11.0	11.0	11.0	11.0	14.0
	73	6315	11.0	11.0	11.0	11.0	14.0
	77	6335	11.0	11.0	11.0	11.0	14.0
81	6355	11.0	11.0	11.0	11.0	14.0	
85	6375	11.0	11.0	11.0	11.0	14.0	
89	6395	11.0	11.0	11.0	11.0	14.0	
93	6415	11.0	11.0	11.0	11.0	14.0	

Tune-up Power (Full)_Laptop Mode							
UNII-5							
Mode	Channel	Frequency	SISO Ant 0 Max Tune up	SISO Ant 1 Max Tune up	MIMO Ant 0 Tune up	MIMO Ant 1 Tune up	MIMO Ant 0+1 Max Tune up
802.11ax HE40	3	5965	11.0	11.0	11.0	11.0	14.0
	11	6005	11.0	11.0	11.0	11.0	14.0
	19	6045	11.0	11.0	11.0	11.0	14.0
	27	6085	11.0	11.0	11.0	11.0	14.0
	35	6125	11.0	11.0	11.0	11.0	14.0
	43	6165	11.0	11.0	11.0	11.0	14.0
	51	6205	11.0	11.0	11.0	11.0	14.0
	59	6245	11.0	11.0	11.0	11.0	14.0
	67	6285	11.0	11.0	11.0	11.0	14.0
	75	6325	11.0	11.0	11.0	11.0	14.0
	83	6365	11.0	11.0	11.0	11.0	14.0
802.11ax HE80	91	6405	11.0	11.0	11.0	11.0	14.0
	7	5985	11.0	11.0	11.0	11.0	14.0
	23	6065	11.0	11.0	11.0	11.0	14.0
	39	6145	11.0	11.0	11.0	11.0	14.0
	55	6225	11.0	11.0	11.0	11.0	14.0
	71	6305	11.0	11.0	11.0	11.0	14.0
802.11ax HE160	87	6385	11.0	11.0	11.0	11.0	14.0
	15	6025	11.0	11.0	11.0	11.0	14.0
	47	6185	11.0	11.0	11.0	11.0	14.0
	79	6345	11.0	11.0	11.0	11.0	14.0



Tune-up Power (Full)_Laptop Mode							
UNII-6							
Mode	Channel	Frequency	SISO Ant 0 Max Tune up	SISO Ant 1 Max Tune up	MIMO Ant 0 Tune up	MIMO Ant 1 Tune up	MIMO Ant 0+1 Max Tune up
802.11ax HE20	97	6435	11.0	11.0	11.0	11.0	14.0
	101	6455	11.0	11.0	11.0	11.0	14.0
	105	6475	11.0	11.0	11.0	11.0	14.0
	109	6495	11.0	11.0	11.0	11.0	14.0
	113	6515	11.0	11.0	11.0	11.0	14.0
	117	6535	11.0	11.0	11.0	11.0	14.0
802.11ax HE40	99	6445	11.0	11.0	11.0	11.0	14.0
	107	6485	11.0	11.0	11.0	11.0	14.0
	115	6525	11.0	11.0	11.0	11.0	14.0
802.11ax HE80	103	6465	11.0	11.0	11.0	11.0	14.0
	119	6545	11.0	11.0	11.0	11.0	14.0
802.11ax HE160	111	6505	11.0	11.0	11.0	11.0	14.0

Tune-up Power (Full)_Laptop Mode							
UNII-7							
Mode	Channel	Frequency	SISO Ant 0 Max Tune up	SISO Ant 1 Max Tune up	MIMO Ant 0 Tune up	MIMO Ant 1 Tune up	MIMO Ant 0+1 Max Tune up
802.11ax HE20	121	6555	11.0	11.0	11.0	11.0	14.0
	125	6575	11.0	11.0	11.0	11.0	14.0
	129	6595	11.0	11.0	11.0	11.0	14.0
	133	6615	11.0	11.0	11.0	11.0	14.0
	137	6635	11.0	11.0	11.0	11.0	14.0
	141	6655	11.0	11.0	11.0	11.0	14.0
	145	6675	11.0	11.0	11.0	11.0	14.0
	149	6695	11.0	11.0	11.0	11.0	14.0
	153	6715	11.0	11.0	11.0	11.0	14.0
	157	6735	11.0	11.0	11.0	11.0	14.0
	161	6755	11.0	11.0	11.0	11.0	14.0
	165	6775	11.0	11.0	11.0	11.0	14.0
	169	6795	11.0	11.0	11.0	11.0	14.0
	173	6815	11.0	11.0	11.0	11.0	14.0
	177	6835	11.0	11.0	11.0	11.0	14.0
	181	6855	11.0	11.0	11.0	11.0	14.0
185	6875	11.0	11.0	11.0	11.0	14.0	
802.11ax HE40	123	6565	11.0	11.0	11.0	11.0	14.0
	131	6605	11.0	11.0	11.0	11.0	14.0
	139	6645	11.0	11.0	11.0	11.0	14.0
	147	6685	11.0	11.0	11.0	11.0	14.0
	155	6725	11.0	11.0	11.0	11.0	14.0
	163	6765	11.0	11.0	11.0	11.0	14.0
	171	6805	11.0	11.0	11.0	11.0	14.0
	179	6845	11.0	11.0	11.0	11.0	14.0
187	6885	11.0	11.0	11.0	11.0	14.0	
802.11ax HE80	135	6625	11.0	11.0	11.0	11.0	14.0
	151	6705	11.0	11.0	11.0	11.0	14.0
	167	6785	11.0	11.0	11.0	11.0	14.0
	183	6865	11.0	11.0	11.0	11.0	14.0
802.11ax HE160	143	6665	11.0	11.0	11.0	11.0	14.0
	175	6825	11.0	11.0	11.0	11.0	14.0

Tune-up Power (Full)_Laptop Mode							
UNII-8							
Mode	Channel	Frequency	SISO Ant 0 Max Tune up	SISO Ant 1 Max Tune up	MIMO Ant 0 Tune up	MIMO Ant 1 Tune up	MIMO Ant 0+1 Max Tune up
802.11ax HE20	189	6895	11.0	11.0	11.0	11.0	14.0
	193	6915	11.0	11.0	11.0	11.0	14.0
	197	6935	11.0	11.0	11.0	11.0	14.0
	201	6955	11.0	11.0	11.0	11.0	14.0
	205	6975	11.0	11.0	11.0	11.0	14.0
	209	6995	11.0	11.0	11.0	11.0	14.0
	213	7015	11.0	11.0	11.0	11.0	14.0
	217	7035	11.0	11.0	11.0	11.0	14.0
	221	7055	11.0	11.0	11.0	11.0	14.0
	225	7075	11.0	11.0	11.0	11.0	14.0
	229	7095	11.0	11.0	11.0	11.0	14.0
802.11ax HE40	233	7115	11.0	11.0	11.0	11.0	14.0
	195	6925	11.0	11.0	11.0	11.0	14.0
	203	6965	11.0	11.0	11.0	11.0	14.0
	211	7005	11.0	11.0	11.0	11.0	14.0
	219	7045	11.0	11.0	11.0	11.0	14.0
802.11ax HE80	227	7085	11.0	11.0	11.0	11.0	14.0
	199	6945	11.0	11.0	11.0	11.0	14.0
802.11ax HE160	215	7025	11.0	11.0	11.0	11.0	14.0
	207	6985	11.0	11.0	11.0	11.0	14.0

Tune-up Power (Full)_Tablet Mode							
WLAN 2.4GHz							
Mode	Channel	Frequency	SISO Ant 0 Max Tune up	SISO Ant 1 Max Tune up	MIMO Ant 0 Tune up	MIMO Ant 1 Tune up	MIMO Ant 0+1 Max Tune up
802.11b	1	2412	12.0	12.0			
	6	2437	12.0	12.0			
	11	2462	12.0	12.0			
	12	2467	12.0	12.0			
	13	2472	12.0	12.0			
802.11g	1	2412	12.0	12.0			
	6	2437	12.0	12.0			
	11	2462	12.0	12.0			
	12	2467	12.0	12.0			
	13	2472	12.0	12.0			
802.11n HT20	1	2412	12.0	12.0	12.0	12.0	15.0
	6	2437	12.0	12.0	12.0	12.0	15.0
	11	2462	12.0	12.0	12.0	12.0	15.0
	12	2467	12.0	12.0	12.0	12.0	15.0
	13	2472	12.0	12.0	12.0	12.0	15.0
802.11n HT40	3	2422	12.0	12.0	12.0	12.0	15.0
	6	2437	12.0	12.0	12.0	12.0	15.0
	9	2452	12.0	12.0	12.0	12.0	15.0
	10	2457	12.0	12.0	12.0	12.0	15.0
	11	2462	12.0	12.0	12.0	12.0	15.0
802.11ax HE20	1	2412	12.0	12.0	12.0	12.0	15.0
	6	2437	12.0	12.0	12.0	12.0	15.0
	11	2462	12.0	12.0	12.0	12.0	15.0
	12	2467	12.0	12.0	12.0	12.0	15.0
	13	2472	12.0	12.0	12.0	12.0	15.0
802.11ax HE40	3	2422	12.0	12.0	12.0	12.0	15.0
	6	2437	12.0	12.0	12.0	12.0	15.0
	9	2452	12.0	12.0	12.0	12.0	15.0
	10	2457	12.0	12.0	12.0	12.0	15.0
	11	2462	12.0	12.0	12.0	12.0	15.0



Tune-up Power (Full)_Tablet Mode				
Bluetooth				
Mode	Channel	Frequency		Ant 1 Max Tune-up
BR / EDR	0	2402		10.0
	39	2441		10.0
	78	2480		10.0
LE	0	2402		10.0
	19	2440		10.0
	39	2480		10.0



Tune-up Power (Full)_Tablet Mode							
WLAN 5.2GHz							
Mode	Channel	Frequency	SISO Ant 0 Max Tune up	SISO Ant 1 Max Tune up	MIMO Ant 0 Tune up	MIMO Ant 1 Tune up	MIMO Ant 0+1 Max Tune up
802.11a	36	5180	10.0	10.0			
	40	5200	10.0	10.0			
	44	5220	10.0	10.0			
	48	5240	10.0	10.0			
802.11n HT20	36	5180	10.0	10.0	10.0	10.0	13.0
	40	5200	10.0	10.0	10.0	10.0	13.0
	44	5220	10.0	10.0	10.0	10.0	13.0
	48	5240	10.0	10.0	10.0	10.0	13.0
802.11n HT40	38	5190	10.0	10.0	10.0	10.0	13.0
	46	5230	10.0	10.0	10.0	10.0	13.0
802.11ac VHT20	36	5180	10.0	10.0	10.0	10.0	13.0
	40	5200	10.0	10.0	10.0	10.0	13.0
	44	5220	10.0	10.0	10.0	10.0	13.0
	48	5240	10.0	10.0	10.0	10.0	13.0
802.11ac VHT40	38	5190	10.0	10.0	10.0	10.0	13.0
	46	5230	10.0	10.0	10.0	10.0	13.0
802.11ac VHT80	42	5210	10.0	10.0	10.0	10.0	13.0
802.11ax HE20	36	5180	10.0	10.0	10.0	10.0	13.0
	40	5200	10.0	10.0	10.0	10.0	13.0
	44	5220	10.0	10.0	10.0	10.0	13.0
	48	5240	10.0	10.0	10.0	10.0	13.0
802.11ax HE40	38	5190	10.0	10.0	10.0	10.0	13.0
	46	5230	10.0	10.0	10.0	10.0	13.0
802.11ax HE80	42	5210	10.0	10.0	10.0	10.0	13.0

Tune-up Power (Full)_Tablet Mode							
WLAN 5.3GHz							
Mode	Channel	Frequency	SISO Ant 0 Max Tune up	SISO Ant 1 Max Tune up	MIMO Ant 0 Tune up	MIMO Ant 1 Tune up	MIMO Ant 0+1 Max Tune up
802.11a	52	5260	10.0	10.0			
	56	5280	10.0	10.0			
	60	5300	10.0	10.0			
	64	5320	10.0	10.0			
802.11n HT20	52	5260	10.0	10.0	10.0	10.0	13.0
	56	5280	10.0	10.0	10.0	10.0	13.0
	60	5300	10.0	10.0	10.0	10.0	13.0
	64	5320	10.0	10.0	10.0	10.0	13.0
802.11n HT40	54	5270	10.0	10.0	10.0	10.0	13.0
	62	5310	10.0	10.0	10.0	10.0	13.0
802.11ac VHT20	52	5260	10.0	10.0	10.0	10.0	13.0
	56	5280	10.0	10.0	10.0	10.0	13.0
	60	5300	10.0	10.0	10.0	10.0	13.0
	64	5320	10.0	10.0	10.0	10.0	13.0
802.11ac VHT40	54	5270	10.0	10.0	10.0	10.0	13.0
	62	5310	10.0	10.0	10.0	10.0	13.0
802.11ac VHT80	58	5290	10.0	10.0	10.0	10.0	13.0
802.11ac VHT160	50	5250	10.0	10.0	10.0	10.0	13.0
802.11ax HE20	52	5260	10.0	10.0	10.0	10.0	13.0
	56	5280	10.0	10.0	10.0	10.0	13.0
	60	5300	10.0	10.0	10.0	10.0	13.0
	64	5320	10.0	10.0	10.0	10.0	13.0
802.11ax HE40	54	5270	10.0	10.0	10.0	10.0	13.0
	62	5310	10.0	10.0	10.0	10.0	13.0
802.11ax HE80	58	5290	10.0	10.0	10.0	10.0	13.0
802.11ax HE160	50	5250	10.0	10.0	10.0	10.0	13.0

Tune-up Power (Full)_Tablet Mode							
WLAN 5.6GHz							
Mode	Channel	Frequency	SISO Ant 0 Max Tune up	SISO Ant 1 Max Tune up	MIMO Ant 0 Tune up	MIMO Ant 1 Tune up	MIMO Ant 0+1 Max Tune up
802.11a	100	5500	10.0	10.0			
	116	5580	10.0	10.0			
	120	5600	10.0	10.0			
	124	5620	10.0	10.0			
	132	5660	10.0	10.0			
	140	5700	10.0	10.0			
	144	5720	10.0	10.0			
802.11n HT20	100	5500	10.0	10.0	10.0	10.0	13.0
	116	5580	10.0	10.0	10.0	10.0	13.0
	120	5600	10.0	10.0	10.0	10.0	13.0
	124	5620	10.0	10.0	10.0	10.0	13.0
	132	5660	10.0	10.0	10.0	10.0	13.0
	140	5700	10.0	10.0	10.0	10.0	13.0
	144	5720	10.0	10.0	10.0	10.0	13.0
802.11n HT40	102	5510	10.0	10.0	10.0	10.0	13.0
	110	5550	10.0	10.0	10.0	10.0	13.0
	118	5590	10.0	10.0	10.0	10.0	13.0
	126	5630	10.0	10.0	10.0	10.0	13.0
	134	5670	10.0	10.0	10.0	10.0	13.0
	142	5710	10.0	10.0	10.0	10.0	13.0
	144	5720	10.0	10.0	10.0	10.0	13.0
802.11ac VHT20	100	5500	10.0	10.0	10.0	10.0	13.0
	116	5580	10.0	10.0	10.0	10.0	13.0
	120	5600	10.0	10.0	10.0	10.0	13.0
	124	5620	10.0	10.0	10.0	10.0	13.0
	132	5660	10.0	10.0	10.0	10.0	13.0
	140	5700	10.0	10.0	10.0	10.0	13.0
	144	5720	10.0	10.0	10.0	10.0	13.0
802.11ac VHT40	102	5510	10.0	10.0	10.0	10.0	13.0
	110	5550	10.0	10.0	10.0	10.0	13.0
	118	5590	10.0	10.0	10.0	10.0	13.0
	126	5630	10.0	10.0	10.0	10.0	13.0
	134	5670	10.0	10.0	10.0	10.0	13.0
	142	5710	10.0	10.0	10.0	10.0	13.0
	144	5720	10.0	10.0	10.0	10.0	13.0
802.11ac VHT80	106	5530	10.0	10.0	10.0	10.0	13.0
	122	5610	10.0	10.0	10.0	10.0	13.0
	138	5690	10.0	10.0	10.0	10.0	13.0
802.11ac VHT160	114	5570	9.5	9.5	9.5	9.5	12.5
802.11ax HE20	100	5500	10.0	10.0	10.0	10.0	13.0
	116	5580	10.0	10.0	10.0	10.0	13.0
	120	5600	10.0	10.0	10.0	10.0	13.0
	124	5620	10.0	10.0	10.0	10.0	13.0
	132	5660	10.0	10.0	10.0	10.0	13.0
	140	5700	10.0	10.0	10.0	10.0	13.0
	144	5720	10.0	10.0	10.0	10.0	13.0
802.11ax HE40	102	5510	10.0	10.0	10.0	10.0	13.0
	110	5550	10.0	10.0	10.0	10.0	13.0
	118	5590	10.0	10.0	10.0	10.0	13.0
	126	5630	10.0	10.0	10.0	10.0	13.0
	134	5670	10.0	10.0	10.0	10.0	13.0
	142	5710	10.0	10.0	10.0	10.0	13.0
802.11ax HE80	106	5530	10.0	10.0	10.0	10.0	13.0
	122	5610	10.0	10.0	10.0	10.0	13.0
	138	5690	10.0	10.0	10.0	10.0	13.0
802.11ax HE160	114	5570	9.5	9.5	9.5	9.5	12.5

Tune-up Power (Full)_Tablet Mode							
WLAN 5.8GHz							
Mode	Channel	Frequency	SISO Ant 0 Max Tune up	SISO Ant 1 Max Tune up	MIMO Ant 0 Tune up	MIMO Ant 1 Tune up	MIMO Ant 0+1 Max Tune up
802.11a	149	5745	10.0	10.0			
	153	5765	10.0	10.0			
	157	5785	10.0	10.0			
	161	5805	10.0	10.0			
	165	5825	10.0	10.0			
802.11n HT20	149	5745	10.0	10.0	10.0	10.0	13.0
	153	5765	10.0	10.0	10.0	10.0	13.0
	157	5785	10.0	10.0	10.0	10.0	13.0
	161	5805	10.0	10.0	10.0	10.0	13.0
	165	5825	10.0	10.0	10.0	10.0	13.0
802.11n HT40	151	5755	10.0	10.0	10.0	10.0	13.0
	159	5795	10.0	10.0	10.0	10.0	13.0
802.11ac VHT20	149	5745	10.0	10.0	10.0	10.0	13.0
	153	5765	10.0	10.0	10.0	10.0	13.0
	157	5785	10.0	10.0	10.0	10.0	13.0
	161	5805	10.0	10.0	10.0	10.0	13.0
	165	5825	10.0	10.0	10.0	10.0	13.0
802.11ac VHT40	151	5755	10.0	10.0	10.0	10.0	13.0
	159	5795	10.0	10.0	10.0	10.0	13.0
802.11ac VHT80	155	5775	10.0	10.0	10.0	10.0	13.0
802.11ax HE20	149	5745	10.0	10.0	10.0	10.0	13.0
	153	5765	10.0	10.0	10.0	10.0	13.0
	157	5785	10.0	10.0	10.0	10.0	13.0
	161	5805	10.0	10.0	10.0	10.0	13.0
	165	5825	10.0	10.0	10.0	10.0	13.0
802.11ax HE40	151	5755	10.0	10.0	10.0	10.0	13.0
	159	5795	10.0	10.0	10.0	10.0	13.0
802.11ax HE80	155	5775	10.0	10.0	10.0	10.0	13.0



Tune-up Power (Full)_Tablet Mode							
WLAN 5.9GHz							
Mode	Channel	Frequency	SISO Ant 0 Max Tune up	SISO Ant 1 Max Tune up	MIMO Ant 0 Tune up	MIMO Ant 1 Tune up	MIMO Ant 0+1 Max Tune up
802.11a	169	5845	10.0	10.0			
	173	5865	10.0	10.0			
	177	5885	10.0	10.0			
802.11n HT20	169	5845	10.0	10.0	10.0	10.0	13.0
	173	5865	10.0	10.0	10.0	10.0	13.0
	177	5885	10.0	10.0	10.0	10.0	13.0
802.11n HT40	167	5835	10.0	10.0	10.0	10.0	13.0
	175	5875	10.0	10.0	10.0	10.0	13.0
802.11ac VHT20	169	5845	10.0	10.0	10.0	10.0	13.0
	173	5865	10.0	10.0	10.0	10.0	13.0
	177	5885	10.0	10.0	10.0	10.0	13.0
802.11ac VHT40	167	5835	10.0	10.0	10.0	10.0	13.0
	175	5875	10.0	10.0	10.0	10.0	13.0
802.11ac VHT80	171	5855	10.0	10.0	10.0	10.0	13.0
802.11ac VHT160	163	5815	10.0	10.0	10.0	10.0	13.0
802.11ax HE20	169	5845	10.0	10.0	10.0	10.0	13.0
	173	5865	10.0	10.0	10.0	10.0	13.0
	177	5885	10.0	10.0	10.0	10.0	13.0
802.11ax HE40	167	5835	10.0	10.0	10.0	10.0	13.0
	175	5875	10.0	10.0	10.0	10.0	13.0
802.11ax HE80	171	5855	10.0	10.0	10.0	10.0	13.0
802.11ax HE160	163	5815	10.0	10.0	10.0	10.0	13.0



Tune-up Power (Full)_Tablet Mode							
UNII-5							
Mode	Channel	Frequency	SISO Ant 0 Max Tune up	SISO Ant 1 Max Tune up	MIMO Ant 0 Tune up	MIMO Ant 1 Tune up	MIMO Ant 0+1 Max Tune up
802.11ax HE20	1	5955	8.0	8.0	8.0	8.0	11.0
	5	5975	8.0	8.0	8.0	8.0	11.0
	9	5995	8.0	8.0	8.0	8.0	11.0
	13	6015	8.0	8.0	8.0	8.0	11.0
	17	6035	8.0	8.0	8.0	8.0	11.0
	21	6055	8.0	8.0	8.0	8.0	11.0
	25	6075	8.0	8.0	8.0	8.0	11.0
	29	6095	8.0	8.0	8.0	8.0	11.0
	33	6115	8.0	8.0	8.0	8.0	11.0
	37	6135	8.0	8.0	8.0	8.0	11.0
	41	6155	8.0	8.0	8.0	8.0	11.0
	45	6175	8.0	8.0	8.0	8.0	11.0
	49	6195	8.0	8.0	8.0	8.0	11.0
	53	6215	8.0	8.0	8.0	8.0	11.0
	57	6235	8.0	8.0	8.0	8.0	11.0
	61	6255	8.0	8.0	8.0	8.0	11.0
	65	6275	8.0	8.0	8.0	8.0	11.0
	69	6295	8.0	8.0	8.0	8.0	11.0
	73	6315	8.0	8.0	8.0	8.0	11.0
	77	6335	8.0	8.0	8.0	8.0	11.0
81	6355	8.0	8.0	8.0	8.0	11.0	
85	6375	8.0	8.0	8.0	8.0	11.0	
89	6395	8.0	8.0	8.0	8.0	11.0	
93	6415	8.0	8.0	8.0	8.0	11.0	
802.11ax HE40	3	5965	8.0	8.0	8.0	8.0	11.0
	11	6005	8.0	8.0	8.0	8.0	11.0
	19	6045	8.0	8.0	8.0	8.0	11.0
	27	6085	8.0	8.0	8.0	8.0	11.0
	35	6125	8.0	8.0	8.0	8.0	11.0
	43	6165	8.0	8.0	8.0	8.0	11.0
	51	6205	8.0	8.0	8.0	8.0	11.0
	59	6245	8.0	8.0	8.0	8.0	11.0
	67	6285	8.0	8.0	8.0	8.0	11.0
	75	6325	8.0	8.0	8.0	8.0	11.0
83	6365	8.0	8.0	8.0	8.0	11.0	
91	6405	8.0	8.0	8.0	8.0	11.0	
802.11ax HE80	7	5985	8.0	8.0	8.0	8.0	11.0
	23	6065	8.0	8.0	8.0	8.0	11.0
	39	6145	8.0	8.0	8.0	8.0	11.0
	55	6225	8.0	8.0	8.0	8.0	11.0
	71	6305	8.0	8.0	8.0	8.0	11.0
	87	6385	8.0	8.0	8.0	8.0	11.0
802.11ax HE160	15	6025	8.0	8.0	8.0	8.0	11.0
	47	6185	8.0	8.0	8.0	8.0	11.0
	79	6345	8.0	8.0	8.0	8.0	11.0



Tune-up Power (Full)_Tablet Mode							
UNII-6							
Mode	Channel	Frequency	SISO Ant 0 Max Tune up	SISO Ant 1 Max Tune up	MIMO Ant 0 Tune up	MIMO Ant 1 Tune up	MIMO Ant 0+1 Max Tune up
802.11ax HE20	97	6435	8.0	8.0	8.0	8.0	11.0
	101	6455	8.0	8.0	8.0	8.0	11.0
	105	6475	8.0	8.0	8.0	8.0	11.0
	109	6495	8.0	8.0	8.0	8.0	11.0
	113	6515	8.0	8.0	8.0	8.0	11.0
	117	6535	8.0	8.0	8.0	8.0	11.0
802.11ax HE40	99	6445	8.0	8.0	8.0	8.0	11.0
	107	6485	8.0	8.0	8.0	8.0	11.0
	115	6525	8.0	8.0	8.0	8.0	11.0
802.11ax HE80	103	6465	8.0	8.0	8.0	8.0	11.0
	119	6545	8.0	8.0	8.0	8.0	11.0
802.11ax HE160	111	6505	8.0	8.0	8.0	8.0	11.0

Tune-up Power (Full)_Tablet Mode							
UNII-7							
Mode	Channel	Frequency	SISO Ant 0 Max Tune up	SISO Ant 1 Max Tune up	MIMO Ant 0 Tune up	MIMO Ant 1 Tune up	MIMO Ant 0+1 Max Tune up
802.11ax HE20	121	6555	6.5	8.0	6.5	8.0	10.33
	125	6575	6.5	8.0	6.5	8.0	10.33
	129	6595	6.5	8.0	6.5	8.0	10.33
	133	6615	6.5	8.0	6.5	8.0	10.33
	137	6635	6.5	8.0	6.5	8.0	10.33
	141	6655	6.5	8.0	6.5	8.0	10.33
	145	6675	6.5	8.0	6.5	8.0	10.33
	149	6695	6.5	8.0	6.5	8.0	10.33
	153	6715	6.5	8.0	6.5	8.0	10.33
	157	6735	6.5	8.0	6.5	8.0	10.33
	161	6755	6.5	8.0	6.5	8.0	10.33
	165	6775	6.5	8.0	6.5	8.0	10.33
	169	6795	6.5	8.0	6.5	8.0	10.33
	173	6815	6.5	8.0	6.5	8.0	10.33
	177	6835	6.5	8.0	6.5	8.0	10.33
	181	6855	6.5	8.0	6.5	8.0	10.33
185	6875	6.5	8.0	6.5	8.0	10.33	
802.11ax HE40	123	6565	6.5	8.0	6.5	8.0	10.33
	131	6605	6.5	8.0	6.5	8.0	10.33
	139	6645	6.5	8.0	6.5	8.0	10.33
	147	6685	6.5	8.0	6.5	8.0	10.33
	155	6725	6.5	8.0	6.5	8.0	10.33
	163	6765	6.5	8.0	6.5	8.0	10.33
	171	6805	6.5	8.0	6.5	8.0	10.33
	179	6845	6.5	8.0	6.5	8.0	10.33
187	6885	6.5	8.0	6.5	8.0	10.33	
802.11ax HE80	135	6625	6.5	8.0	6.5	8.0	10.33
	151	6705	6.5	8.0	6.5	8.0	10.33
	167	6785	6.5	8.0	6.5	8.0	10.33
	183	6865	6.5	8.0	6.5	8.0	10.33
802.11ax HE160	143	6665	6.5	8.0	6.5	8.0	10.33
	175	6825	6.5	8.0	6.5	8.0	10.33



Tune-up Power (Full)_Tablet Mode							
UNII-8							
Mode	Channel	Frequency	SISO Ant 0 Max Tune up	SISO Ant 1 Max Tune up	MIMO Ant 0 Tune up	MIMO Ant 1 Tune up	MIMO Ant 0+1 Max Tune up
802.11ax HE20	189	6895	6.5	8.0	6.5	8.0	10.33
	193	6915	6.5	8.0	6.5	8.0	10.33
	197	6935	6.5	8.0	6.5	8.0	10.33
	201	6955	6.5	8.0	6.5	8.0	10.33
	205	6975	6.5	8.0	6.5	8.0	10.33
	209	6995	6.5	8.0	6.5	8.0	10.33
	213	7015	6.5	8.0	6.5	8.0	10.33
	217	7035	6.5	8.0	6.5	8.0	10.33
	221	7055	6.5	8.0	6.5	8.0	10.33
	225	7075	6.5	8.0	6.5	8.0	10.33
	229	7095	6.5	8.0	6.5	8.0	10.33
233	7115	6.5	8.0	6.5	8.0	10.33	
802.11ax HE40	195	6925	6.5	8.0	6.5	8.0	10.33
	203	6965	6.5	8.0	6.5	8.0	10.33
	211	7005	6.5	8.0	6.5	8.0	10.33
	219	7045	6.5	8.0	6.5	8.0	10.33
	227	7085	6.5	8.0	6.5	8.0	10.33
802.11ax HE80	199	6945	6.5	8.0	6.5	8.0	10.33
	215	7025	6.5	8.0	6.5	8.0	10.33
802.11ax HE160	207	6985	6.5	8.0	6.5	8.0	10.33

Appendix E. Measured Conducted Power Result

The measuring conducted power (Unit: dBm) are shown as below.

Conducted Power (Laptop Mode)			
WLAN2.4GHz Ant 0			
Mode	Channel	Frequency	SISO Ant 0 Avg. Power
802.11b	1	2412	12.42
	6	2437	12.39
	11	2462	12.45
	12	2467	12.47
	13	2472	12.48
802.11g	1	2412	12.41
	6	2437	12.37
	11	2462	12.43
	12	2467	12.39
	13	2472	12.41
802.11n HT20	1	2412	12.42
	6	2437	12.44
	11	2462	12.37
	12	2467	12.39
	13	2472	12.43
802.11n HT40	3	2422	12.45
	6	2437	12.42
	9	2452	12.41
	10	2457	12.39
	11	2462	12.46
802.11ax HE20	1	2412	12.44
	6	2437	12.39
	11	2462	12.42
	12	2467	12.45
	13	2472	12.41
802.11ax HE40	3	2422	12.38
	6	2437	12.37
	9	2452	12.41
	10	2457	12.44
	11	2462	12.43

Conducted Power (Laptop Mode)			
WLAN2.4GHz Ant 1			
Mode	Channel	Frequency	SISO Ant 1 Avg. Power
802.11b	1	2412	12.47
	6	2437	12.45
	11	2462	12.38
	12	2467	12.42
	13	2472	12.48
802.11g	1	2412	12.36
	6	2437	12.42
	11	2462	12.38
	12	2467	12.4
	13	2472	12.42
802.11n HT20	1	2412	12.43
	6	2437	12.36
	11	2462	12.38
	12	2467	12.43
	13	2472	12.38
802.11n HT40	3	2422	12.44
	6	2437	12.42
	9	2452	12.41
	10	2457	12.38
	11	2462	12.44
802.11ax HE20	1	2412	12.36
	6	2437	12.43
	11	2462	12.43
	12	2467	12.42
	13	2472	12.41
802.11ax HE40	3	2422	12.36
	6	2437	12.38
	9	2452	12.42
	10	2457	12.41
	11	2462	12.43

Conducted Power (Laptop Mode)					
WLAN2.4GHz Ant 0+1					
Mode	Channel	Frequency	MIMO Ant 0 Avg. Power	MIMO Ant 1 Avg. Power	MIMO Ant 0+1 Avg. Power
802.11b	1	2412			
	6	2437			
	11	2462			
	12	2467			
	13	2472			
802.11g	1	2412			
	6	2437			
	11	2462			
	12	2467			
	13	2472			
802.11n HT20	1	2412	12.37	12.27	15.33
	6	2437	12.11	12.27	15.20
	11	2462	12.13	12.14	15.15
	12	2467	12.25	12.11	15.19
	13	2472	12.32	12.29	15.32
802.11n HT40	3	2422	12.42	12.45	15.45
	6	2437	12.41	12.39	15.41
	9	2452	12.47	12.47	15.48
	10	2457	12.49	12.49	15.50
	11	2462	12.47	12.49	15.49
802.11ax HE20	1	2412	12.14	12.15	15.16
	6	2437	12.21	12.11	15.17
	11	2462	12.32	12.15	15.25
	12	2467	12.19	12.21	15.21
	13	2472	12.18	12.32	15.26
802.11ax HE40	3	2422	12.15	12.17	15.17
	6	2437	12.33	12.11	15.23
	9	2452	12.16	12.39	15.29
	10	2457	12.39	12.24	15.33
	11	2462	12.12	12.33	15.24



Conducted Power (Laptop Mode)			
Bluetooth Ant 1			
Mode	Channel	Frequency	SISO Ant 1 Avg. Power
BR / EDR	0	2402	9.51
	39	2441	9.65
	78	2480	9.91
LE	0	2402	8.78
	19	2440	8.87
	39	2480	8.85

Conducted Power (Laptop Mode)			
WLAN 5.2GHz Ant 0			
Mode	Channel	Frequency	SISO Ant 0 Avg. Power
802.11a	36	5180	10.35
	40	5200	10.35
	44	5220	10.36
	48	5240	10.31
802.11n HT20	36	5180	10.34
	40	5200	10.24
	44	5220	10.34
	48	5240	10.1
802.11n HT40	38	5190	10.13
	46	5230	10.1
802.11ac VHT20	36	5180	10.2
	40	5200	10.14
	44	5220	10.21
	48	5240	10.17
802.11ac VHT40	38	5190	10.21
	46	5230	10.24
802.11ac VHT80	42	5210	10.29
802.11ax HE20	36	5180	10.17
	40	5200	10.33
	44	5220	10.34
	48	5240	10.38
802.11ax HE40	38	5190	10.13
	46	5230	10.15
802.11ax HE80	42	5210	10.23

Conducted Power (Laptop Mode)			
WLAN 5.2GHz Ant 1			
Mode	Channel	Frequency	SISO Ant 1 Avg. Power
802.11a	36	5180	10.25
	40	5200	10.29
	44	5220	10.36
	48	5240	10.24
802.11n HT20	36	5180	10.37
	40	5200	10.1
	44	5220	10.1
	48	5240	10.17
802.11n HT40	38	5190	10.18
	46	5230	10.26
802.11ac VHT20	36	5180	10.14
	40	5200	10.2
	44	5220	10.33
	48	5240	10.37
802.11ac VHT40	38	5190	10.38
	46	5230	10.3
802.11ac VHT80	42	5210	10.11
802.11ax HE20	36	5180	10.15
	40	5200	10.29
	44	5220	10.28
	48	5240	10.33
802.11ax HE40	38	5190	10.38
	46	5230	10.24
802.11ax HE80	42	5210	10.4

Conducted Power (Laptop Mode)					
WLAN 5.2GHz Ant 0+1					
Mode	Channel	Frequency	MIMO Ant 0 Avg. Power	MIMO Ant 1 Avg. Power	MIMO Ant 0+1 Avg. Power
802.11a	36	5180			
	40	5200			
	44	5220			
	48	5240			
802.11n HT20	36	5180	10.32	10.21	13.28
	40	5200	10.21	10.39	13.31
	44	5220	10.2	10.29	13.26
	48	5240	10.16	10.11	13.15
802.11n HT40	38	5190	10.12	10.19	13.17
	46	5230	10.38	10.18	13.29
802.11ac VHT20	36	5180	10.21	10.12	13.18
	40	5200	10.1	10.12	13.12
	44	5220	10.15	10.26	13.22
	48	5240	10.38	10.17	13.29
802.11ac VHT40	38	5190	10.34	10.38	13.37
	46	5230	10.16	10.4	13.29
802.11ac VHT80	42	5210	10.14	10.21	13.19
802.11ax HE20	36	5180	10.39	10.12	13.27
	40	5200	10.24	10.4	13.33
	44	5220	10.22	10.37	13.31
	48	5240	10.12	10.23	13.19
802.11ax HE40	38	5190	10.4	10.34	13.38
	46	5230	10.15	10.16	13.17
802.11ax HE80	42	5210	10.3	10.12	13.22

Conducted Power (Laptop Mode)			
WLAN 5.3GHz Ant 0			
Mode	Channel	Frequency	SISO Ant 0 Avg. Power
802.11a	52	5260	10.18
	56	5280	10.19
	60	5300	10.34
	64	5320	10.15
802.11n HT20	52	5260	10.36
	56	5280	10.13
	60	5300	10.24
	64	5320	10.27
802.11n HT40	54	5270	10.24
	62	5310	10.36
802.11ac VHT20	52	5260	10.16
	56	5280	10.21
	60	5300	10.14
	64	5320	10.18
802.11ac VHT40	54	5270	10.32
	62	5310	10.26
802.11ac VHT80	58	5290	10.22
802.11ac VHT160	50	5250	10.47
802.11ax HE20	52	5260	10.13
	56	5280	10.3
	60	5300	10.37
	64	5320	10.13
802.11ax HE40	54	5270	10.4
	62	5310	10.3
802.11ax HE80	58	5290	10.36
802.11ax HE160	50	5250	10.48

Conducted Power (Laptop Mode)			
WLAN 5.3GHz Ant 1			
Mode	Channel	Frequency	SISO Ant 1 Avg. Power
802.11a	52	5260	10.2
	56	5280	10.27
	60	5300	10.17
	64	5320	10.37
802.11n HT20	52	5260	10.35
	56	5280	10.35
	60	5300	10.3
	64	5320	10.2
802.11n HT40	54	5270	10.35
	62	5310	10.11
802.11ac VHT20	52	5260	10.15
	56	5280	10.19
	60	5300	10.27
	64	5320	10.22
802.11ac VHT40	54	5270	10.31
	62	5310	10.23
802.11ac VHT80	58	5290	10.16
802.11ac VHT160	50	5250	10.48
802.11ax HE20	52	5260	10.2
	56	5280	10.34
	60	5300	10.33
	64	5320	10.33
802.11ax HE40	54	5270	10.16
	62	5310	10.13
802.11ax HE80	58	5290	10.14
802.11ax HE160	50	5250	10.49

Conducted Power (Laptop Mode)					
WLAN 5.3GHz Ant 0+1					
Mode	Channel	Frequency	MIMO Ant 0 Avg. Power	MIMO Ant 1 Avg. Power	MIMO Ant 0+1 Avg. Power
802.11a	52	5260			
	56	5280			
	60	5300			
	64	5320			
802.11n HT20	52	5260	10.24	10.19	13.23
	56	5280	10.28	10.26	13.28
	60	5300	10.39	10.28	13.35
	64	5320	10.23	10.37	13.31
802.11n HT40	54	5270	10.35	10.22	13.3
	62	5310	10.39	10.3	13.36
802.11ac VHT20	52	5260	10.25	10.38	13.33
	56	5280	10.19	10.39	13.3
	60	5300	10.14	10.39	13.28
	64	5320	10.13	10.1	13.13
802.11ac VHT40	54	5270	10.29	10.18	13.25
	62	5310	10.18	10.38	13.29
802.11ac VHT80	58	5290	10.24	10.37	13.32
802.11ac VHT160	50	5250	10.49	10.47	13.49
802.11ax HE20	52	5260	10.38	10.15	13.28
	56	5280	10.27	10.24	13.27
	60	5300	10.28	10.26	13.28
	64	5320	10.25	10.11	13.19
802.11ax HE40	54	5270	10.27	10.15	13.22
	62	5310	10.28	10.14	13.22
802.11ax HE80	58	5290	10.23	10.2	13.23
802.11ax HE160	50	5250	10.48	10.49	13.5

Conducted Power (Laptop Mode)			
WLAN 5.6GHz Ant 0			
Mode	Channel	Frequency	SISO Ant 0 Avg. Power
802.11a	100	5500	10.19
	116	5580	10.32
	120	5600	10.17
	124	5620	10.17
	132	5660	10.19
	140	5700	10.22
	144	5720	10.2
802.11n HT20	100	5500	10.2
	116	5580	10.34
	120	5600	10.34
	124	5620	10.31
	132	5660	10.19
	140	5700	10.37
802.11n HT40	102	5510	10.21
	110	5550	10.29
	118	5590	10.32
	126	5630	10.18
	134	5670	10.35
	142	5710	10.24
802.11ac VHT20	100	5500	10.1
	116	5580	10.16
	120	5600	10.37
	124	5620	10.13
	132	5660	10.3
	140	5700	10.32
	144	5720	10.15
802.11ac VHT40	102	5510	10.15
	110	5550	10.14
	118	5590	10.3
	126	5630	10.39
	134	5670	10.34
	142	5710	10.1
802.11ac VHT80	106	5530	10.38
	122	5610	10.37
	138	5690	10.43
802.11ac VHT160	114	5570	9.63
802.11ax HE20	100	5500	10.37
	116	5580	10.14
	120	5600	10.36
	124	5620	10.29
	132	5660	10.25
	140	5700	10.3
	144	5720	10.16
802.11ax HE40	102	5510	10.34
	110	5550	10.26
	118	5590	10.15
	126	5630	10.25
	134	5670	10.38
	142	5710	10.31
802.11ax HE80	106	5530	10.38
	122	5610	10.37
	138	5690	10.45
802.11ax HE160	114	5570	9.67

Conducted Power (Laptop Mode)			
WLAN 5.6GHz Ant 1			
Mode	Channel	Frequency	SISO Ant 1 Avg. Power
802.11a	100	5500	10.37
	116	5580	10.25
	120	5600	10.11
	124	5620	10.36
	132	5660	10.1
	140	5700	10.19
	144	5720	10.24
802.11n HT20	100	5500	10.29
	116	5580	10.33
	120	5600	10.3
	124	5620	10.24
	132	5660	10.21
	140	5700	10.1
802.11n HT40	102	5510	10.37
	110	5550	10.22
	118	5590	10.19
	126	5630	10.31
	134	5670	10.14
	142	5710	10.25
802.11ac VHT20	100	5500	10.12
	116	5580	10.35
	120	5600	10.1
	124	5620	10.13
	132	5660	10.16
	140	5700	10.27
	144	5720	10.35
802.11ac VHT40	102	5510	10.17
	110	5550	10.26
	118	5590	10.31
	126	5630	10.12
	134	5670	10.36
	142	5710	10.34
802.11ac VHT80	106	5530	10.43
	122	5610	10.42
	138	5690	10.46
802.11ac VHT160	114	5570	9.69
802.11ax HE20	100	5500	10.1
	116	5580	10.13
	120	5600	10.39
	124	5620	10.28
	132	5660	10.36
	140	5700	10.32
	144	5720	10.19
802.11ax HE40	102	5510	10.19
	110	5550	10.28
	118	5590	10.23
	126	5630	10.38
	134	5670	10.19
	142	5710	10.12
802.11ax HE80	106	5530	10.43
	122	5610	10.45
	138	5690	10.48
802.11ax HE160	114	5570	9.89

Conducted Power (Laptop Mode)					
WLAN 5.6GHz Ant 0+1					
Mode	Channel	Frequency	MIMO Ant 0 Avg. Power	MIMO Ant 1 Avg. Power	MIMO Ant 0+1 Avg. Power
802.11a	100	5500			
	116	5580			
	120	5600			
	124	5620			
	132	5660			
	140	5700			
	144	5720			
802.11n HT20	100	5500	10.2	10.33	13.28
	116	5580	10.14	10.18	13.17
	120	5600	10.31	10.31	13.32
	124	5620	10.2	10.33	13.28
	132	5660	10.25	10.17	13.22
	140	5700	10.29	10.25	13.28
	144	5720	10.31	10.27	13.3
802.11n HT40	102	5510	10.3	10.28	13.3
	110	5550	10.16	10.28	13.23
	118	5590	10.21	10.3	13.27
	126	5630	10.18	10.11	13.16
	134	5670	10.37	10.28	13.34
	142	5710	10.39	10.16	13.29
	100	5500	10.35	10.2	13.29
802.11ac VHT20	116	5580	10.12	10.31	13.23
	120	5600	10.12	10.19	13.17
	124	5620	10.16	10.25	13.22
	132	5660	10.15	10.21	13.19
	140	5700	10.23	10.26	13.26
	144	5720	10.21	10.17	13.2
	802.11ac VHT40	102	5510	10.13	10.18
110		5550	10.2	10.11	13.17
118		5590	10.17	10.26	13.23
126		5630	10.28	10.36	13.33
134		5670	10.22	10.12	13.18
142		5710	10.26	10.22	13.25
802.11ac VHT80		106	5530	10.39	10.39
	122	5610	10.31	10.33	13.33
	138	5690	10.43	10.46	13.46
802.11ac VHT160	114	5570	9.8	9.85	12.84
802.11ax HE20	100	5500	10.1	10.36	13.24
	116	5580	10.34	10.38	13.37
	120	5600	10.18	10.12	13.16
	124	5620	10.13	10.17	13.16
	132	5660	10.25	10.13	13.2
	140	5700	10.19	10.12	13.17
	144	5720	10.34	10.32	13.34
802.11ax HE40	102	5510	10.31	10.29	13.31
	110	5550	10.36	10.12	13.25
	118	5590	10.4	10.18	13.3
	126	5630	10.23	10.33	13.29
	134	5670	10.15	10.38	13.28
	142	5710	10.24	10.39	13.33
802.11ax HE80	106	5530	10.43	10.45	13.45
	122	5610	10.41	10.42	13.43
	138	5690	10.45	10.47	13.47
802.11ax HE160	114	5570	9.64	9.78	12.72

Conducted Power (Laptop Mode)			
WLAN 5.8GHz Ant 0			
Mode	Channel	Frequency	SISO Ant 0 Avg. Power
802.11a	149	5745	10.13
	153	5765	10.39
	157	5785	10.15
	161	5805	10.1
	165	5825	10.28
802.11n HT20	149	5745	10.31
	153	5765	10.3
	157	5785	10.37
	161	5805	10.18
	165	5825	10.32
802.11n HT40	151	5755	10.37
	159	5795	10.35
802.11ac VHT20	149	5745	10.26
	153	5765	10.3
	157	5785	10.27
	161	5805	10.35
	165	5825	10.37
802.11ac VHT40	151	5755	10.33
	159	5795	10.4
802.11ac VHT80	155	5775	10.43
802.11ax HE20	149	5745	10.12
	153	5765	10.34
	157	5785	10.29
	161	5805	10.33
	165	5825	10.34
802.11ax HE40	151	5755	10.38
	159	5795	10.45
802.11ax HE80	155	5775	10.49

Conducted Power (Laptop Mode)			
WLAN 5.8GHz Ant 1			
Mode	Channel	Frequency	SISO Ant 1 Avg. Power
802.11a	149	5745	10.18
	153	5765	10.31
	157	5785	10.26
	161	5805	10.37
	165	5825	10.24
802.11n HT20	149	5745	10.32
	153	5765	10.12
	157	5785	10.4
	161	5805	10.16
	165	5825	10.3
802.11n HT40	151	5755	10.39
	159	5795	10.1
802.11ac VHT20	149	5745	10.35
	153	5765	10.4
	157	5785	10.41
	161	5805	10.35
	165	5825	10.31
802.11ac VHT40	151	5755	10.37
	159	5795	10.13
802.11ac VHT80	155	5775	10.42
802.11ax HE20	149	5745	10.26
	153	5765	10.18
	157	5785	10.43
	161	5805	10.12
	165	5825	10.35
802.11ax HE40	151	5755	10.41
	159	5795	10.13
802.11ax HE80	155	5775	10.46

Conducted Power (Laptop Mode)					
WLAN 5.8GHz Ant 0+1					
Mode	Channel	Frequency	MIMO Ant 0 Avg. Power	MIMO Ant 1 Avg. Power	MIMO Ant 0+1 Avg. Power
802.11a	149	5745			
	153	5765			
	157	5785			
	161	5805			
	165	5825			
802.11n HT20	149	5745	10.15	10.17	13.17
	153	5765	10.38	10.35	13.38
	157	5785	10.19	10.25	13.23
	161	5805	10.23	10.25	13.25
	165	5825	10.4	10.29	13.36
802.11n HT40	151	5755	10.36	10.15	13.27
	159	5795	10.31	10.1	13.22
802.11ac VHT20	149	5745	10.11	10.34	13.24
	153	5765	10.31	10.34	13.34
	157	5785	10.15	10.27	13.22
	161	5805	10.11	10.15	13.14
	165	5825	10.27	10.12	13.21
802.11ac VHT40	151	5755	10.28	10.22	13.26
	159	5795	10.35	10.39	13.38
802.11ac VHT80	155	5775	10.46	10.41	13.45
802.11ax HE20	149	5745	10.39	10.23	13.32
	153	5765	10.24	10.34	13.3
	157	5785	10.24	10.36	13.31
	161	5805	10.36	10.23	13.31
	165	5825	10.31	10.35	13.34
802.11ax HE40	151	5755	10.32	10.11	13.23
	159	5795	10.37	10.4	13.4
802.11ax HE80	155	5775	10.49	10.45	13.48

Conducted Power (Laptop Mode)			
WLAN 5.9GHz Ant 0			
Mode	Channel	Frequency	SISO Ant 0 Avg. Power
802.11a	169	5845	10.15
	173	5865	10.11
	177	5885	10.00
802.11n HT20	169	5845	10.13
	173	5865	10.04
	177	5885	10.16
802.11n HT40	167	5835	10.09
	175	5875	10.14
802.11ac VHT20	169	5845	10.00
	173	5865	10.06
	177	5885	10.03
802.11ac VHT40	167	5835	10.11
	175	5875	10.13
802.11ac VHT80	171	5855	10.15
802.11ac VHT160	163	5815	10.43
802.11ax HE20	169	5845	10.13
	173	5865	10.07
	177	5885	10.10
802.11ax HE40	167	5835	10.12
	175	5875	10.15
802.11ax HE80	171	5855	10.17
802.11ax HE160	163	5815	10.48

Conducted Power (Laptop Mode)			
WLAN 5.9GHz Ant 1			
Mode	Channel	Frequency	SISO Ant 1 Avg. Power
802.11a	169	5845	10.13
	173	5865	10.18
	177	5885	10.18
802.11n HT20	169	5845	10.10
	173	5865	10.04
	177	5885	10.04
802.11n HT40	167	5835	10.06
	175	5875	10.02
802.11ac VHT20	169	5845	10.04
	173	5865	10.07
	177	5885	10.15
802.11ac VHT40	167	5835	10.11
	175	5875	10.05
802.11ac VHT80	171	5855	10.08
802.11ac VHT160	163	5815	10.46
802.11ax HE20	169	5845	10.07
	173	5865	10.09
	177	5885	10.19
802.11ax HE40	167	5835	10.13
	175	5875	10.06
802.11ax HE80	171	5855	10.12
802.11ax HE160	163	5815	10.49

Conducted Power (Laptop Mode)					
WLAN 5.9GHz Ant 0+1					
Mode	Channel	Frequency	MIMO Ant 0 Avg. Power	MIMO Ant 1 Avg. Power	MIMO Ant 0+1 Avg. Power
802.11a	169	5845			
	173	5865			
	177	5885			
802.11n HT20	169	5845	10.03	10.01	13.03
	173	5865	10.07	10.05	13.07
	177	5885	10.11	10.10	13.12
802.11n HT40	167	5835	10.00	10.02	13.02
	175	5875	10.13	10.08	13.12
802.11ac VHT20	169	5845	10.08	10.04	13.07
	173	5865	10.19	10.07	13.14
	177	5885	10.02	10.07	13.06
802.11ac VHT40	167	5835	10.11	10.13	13.13
	175	5875	10.04	10.11	13.09
802.11ac VHT80	171	5855	10.10	10.12	13.12
802.11ac VHT160	163	5815	10.45	10.48	13.48
802.11ax HE20	169	5845	10.09	10.03	13.07
	173	5865	10.18	10.19	13.2
	177	5885	10.03	10.16	13.11
802.11ax HE40	167	5835	10.13	10.18	13.17
	175	5875	10.05	10.18	13.13
802.11ax HE80	171	5855	10.11	10.13	13.13
802.11ax HE160	163	5815	10.47	10.49	13.49

Conducted Power (Laptop Mode)			
UNII-5 Ant 0			
Mode	Channel	Frequency	SISO Ant 0 Avg. Power
802.11ax HE20	1	5955	10.65
	5	5975	10.83
	9	5995	10.89
	13	6015	10.83
	17	6035	10.68
	21	6055	10.88
	25	6075	10.68
	29	6095	10.73
	33	6115	10.83
	37	6135	10.86
	41	6155	10.89
	45	6175	10.75
	49	6195	10.74
	53	6215	10.6
	57	6235	10.8
	61	6255	10.71
	65	6275	10.83
	69	6295	10.61
	73	6315	10.84
	77	6335	10.73
81	6355	10.76	
85	6375	10.73	
89	6395	10.75	
93	6415	10.71	

Conducted Power (Laptop Mode)			
UNII-5 Ant 1			
Mode	Channel	Frequency	SISO Ant 1 Avg. Power
802.11ax HE20	1	5955	10.86
	5	5975	10.6
	9	5995	10.79
	13	6015	10.63
	17	6035	10.85
	21	6055	10.7
	25	6075	10.87
	29	6095	10.8
	33	6115	10.65
	37	6135	10.89
	41	6155	10.64
	45	6175	10.72
	49	6195	10.65
	53	6215	10.83
	57	6235	10.81
	61	6255	10.89
	65	6275	10.79
	69	6295	10.76
	73	6315	10.7
	77	6335	10.6
81	6355	10.66	
85	6375	10.88	
89	6395	10.61	
93	6415	10.85	

Conducted Power (Laptop Mode)					
UNII-5 Ant 0+1					
Mode	Channel	Frequency	MIMO Ant 0 Avg. Power	MIMO Ant 1 Avg. Power	MIMO Ant 0+1 Avg. Power
802.11ax HE20	1	5955	10.83	10.71	13.78
	5	5975	10.8	10.67	13.75
	9	5995	10.71	10.84	13.79
	13	6015	10.9	10.62	13.77
	17	6035	10.68	10.73	13.72
	21	6055	10.67	10.83	13.76
	25	6075	10.83	10.88	13.87
	29	6095	10.7	10.74	13.73
	33	6115	10.84	10.75	13.81
	37	6135	10.61	10.72	13.68
	41	6155	10.69	10.73	13.72
	45	6175	10.66	10.77	13.73
	49	6195	10.73	10.83	13.79
	53	6215	10.7	10.64	13.68
	57	6235	10.85	10.8	13.84
	61	6255	10.76	10.86	13.82
	65	6275	10.84	10.89	13.88
	69	6295	10.62	10.64	13.64
	73	6315	10.73	10.69	13.72
	77	6335	10.88	10.86	13.88
81	6355	10.7	10.87	13.8	
85	6375	10.69	10.79	13.75	
89	6395	10.6	10.81	13.72	
93	6415	10.62	10.82	13.73	



Conducted Power (Laptop Mode)			
UNII-5 Ant 0			
Mode	Channel	Frequency	SISO Ant 0 Avg. Power
802.11ax HE40	3	5965	10.65
	11	6005	10.75
	19	6045	10.79
	27	6085	10.75
	35	6125	10.67
	43	6165	10.78
	51	6205	10.67
	59	6245	10.77
	67	6285	10.67
	75	6325	10.83
	83	6365	10.79
91	6405	10.65	
802.11ax HE80	7	5985	10.9
	23	6065	10.83
	39	6145	10.75
	55	6225	10.73
	71	6305	10.79
	87	6385	10.69
802.11ax HE160	15	6025	10.89
	47	6185	10.93
	79	6345	10.99



Conducted Power (Laptop Mode)			
UNII-5 Ant 1			
Mode	Channel	Frequency	SISO Ant 1 Avg. Power
802.11ax HE40	3	5965	10.71
	11	6005	10.76
	19	6045	10.7
	27	6085	10.73
	35	6125	10.61
	43	6165	10.61
	51	6205	10.88
	59	6245	10.82
	67	6285	10.73
	75	6325	10.72
	83	6365	10.61
91	6405	10.68	
802.11ax HE80	7	5985	10.67
	23	6065	10.74
	39	6145	10.74
	55	6225	10.87
	71	6305	10.71
	87	6385	10.6
802.11ax HE160	15	6025	10.91
	47	6185	10.89
	79	6345	10.99

Conducted Power (Laptop Mode)					
UNII-5 Ant 0+1					
Mode	Channel	Frequency	MIMO Ant 0 Avg. Power	MIMO Ant 1 Avg. Power	MIMO Ant 0+1 Avg. Power
802.11ax HE40	3	5965	10.83	10.72	13.79
	11	6005	10.62	10.73	13.69
	19	6045	10.75	10.67	13.72
	27	6085	10.69	10.64	13.68
	35	6125	10.68	10.68	13.69
	43	6165	10.66	10.86	13.77
	51	6205	10.62	10.69	13.67
	59	6245	10.9	10.72	13.82
	67	6285	10.7	10.77	13.75
	75	6325	10.62	10.89	13.77
	83	6365	10.84	10.64	13.75
802.11ax HE80	91	6405	10.9	10.67	13.8
	7	5985	10.71	10.62	13.68
	23	6065	10.88	10.78	13.84
	39	6145	10.64	10.6	13.63
	55	6225	10.7	10.82	13.77
	71	6305	10.77	10.75	13.77
802.11ax HE160	87	6385	10.7	10.63	13.68
	15	6025	10.91	10.95	13.94
	47	6185	10.89	10.91	13.91
	79	6345	10.96	10.94	13.96



Conducted Power (Laptop Mode)			
UNII-6 Ant 0			
Mode	Channel	Frequency	SISO Ant 0 Avg. Power
802.11ax HE20	97	6435	10.84
	101	6455	10.87
	105	6475	10.65
	109	6495	10.66
	113	6515	10.89
	117	6535	10.61
802.11ax HE40	99	6445	10.64
	107	6485	10.76
	115	6525	10.76
802.11ax HE80	103	6465	10.65
	119	6545	10.64
802.11ax HE160	111	6505	10.94



Conducted Power (Laptop Mode)			
UNII-6 Ant 1			
Mode	Channel	Frequency	SISO Ant 1 Avg. Power
802.11ax HE20	97	6435	10.87
	101	6455	10.65
	105	6475	10.82
	109	6495	10.74
	113	6515	10.61
	117	6535	10.63
802.11ax HE40	99	6445	10.89
	107	6485	10.8
	115	6525	10.78
802.11ax HE80	103	6465	10.7
	119	6545	10.68
802.11ax HE160	111	6505	10.92

Conducted Power (Laptop Mode)					
UNII-6 Ant 0+1					
Mode	Channel	Frequency	MIMO Ant 0 Avg. Power	MIMO Ant 1 Avg. Power	MIMO Ant 0+1 Avg. Power
802.11ax HE20	97	6435	10.64	10.78	13.72
	101	6455	10.9	10.63	13.78
	105	6475	10.62	10.77	13.71
	109	6495	10.71	10.87	13.8
	113	6515	10.84	10.67	13.77
	117	6535	10.85	10.9	13.89
802.11ax HE40	99	6445	10.72	10.88	13.81
	107	6485	10.88	10.89	13.9
	115	6525	10.81	10.67	13.75
802.11ax HE80	103	6465	10.85	10.7	13.79
	119	6545	10.6	10.77	13.7
802.11ax HE160	111	6505	10.91	10.94	13.94

Conducted Power (Laptop Mode)			
UNII-7 Ant 0			
Mode	Channel	Frequency	SISO Ant 0 Avg. Power
802.11ax HE20	121	6555	10.86
	125	6575	10.89
	129	6595	10.66
	133	6615	10.86
	137	6635	10.87
	141	6655	10.66
	145	6675	10.67
	149	6695	10.77
	153	6715	10.61
	157	6735	10.68
	161	6755	10.71
	165	6775	10.69
	169	6795	10.6
	173	6815	10.78
	177	6835	10.78
	181	6855	10.85
185	6875	10.76	
802.11ax HE40	123	6565	10.7
	131	6605	10.89
	139	6645	10.79
	147	6685	10.62
	155	6725	10.71
	163	6765	10.69
	171	6805	10.89
	179	6845	10.62
187	6885	10.76	
802.11ax HE80	135	6625	10.65
	151	6705	10.72
	167	6785	10.72
802.11ax HE160	183	6865	10.69
	143	6665	10.96
	175	6825	10.94



Conducted Power (Laptop Mode)			
UNII-7 Ant 1			
Mode	Channel	Frequency	SISO Ant 1 Avg. Power
802.11ax HE20	121	6555	10.67
	125	6575	10.76
	129	6595	10.82
	133	6615	10.89
	137	6635	10.71
	141	6655	10.62
	145	6675	10.79
	149	6695	10.78
	153	6715	10.86
	157	6735	10.65
	161	6755	10.64
	165	6775	10.76
	169	6795	10.77
	173	6815	10.65
	177	6835	10.69
	181	6855	10.72
185	6875	10.89	
802.11ax HE40	123	6565	10.7
	131	6605	10.84
	139	6645	10.73
	147	6685	10.82
	155	6725	10.7
	163	6765	10.88
	171	6805	10.87
	179	6845	10.67
187	6885	10.8	
802.11ax HE80	135	6625	10.75
	151	6705	10.7
	167	6785	10.66
802.11ax HE160	183	6865	10.61
	143	6665	10.97
	175	6825	10.91

Conducted Power (Laptop Mode)					
UNII-7 Ant 0+1					
Mode	Channel	Frequency	MIMO Ant 0 Avg. Power	MIMO Ant 1 Avg. Power	MIMO Ant 0+1 Avg. Power
802.11ax HE20	121	6555	10.8	10.61	13.72
	125	6575	10.66	10.7	13.69
	129	6595	10.79	10.71	13.76
	133	6615	10.9	10.6	13.76
	137	6635	10.86	10.61	13.75
	141	6655	10.77	10.76	13.78
	145	6675	10.64	10.76	13.71
	149	6695	10.9	10.69	13.81
	153	6715	10.64	10.73	13.7
	157	6735	10.89	10.61	13.76
	161	6755	10.88	10.65	13.78
	165	6775	10.89	10.87	13.89
	169	6795	10.7	10.6	13.66
	173	6815	10.62	10.86	13.75
	177	6835	10.64	10.78	13.72
	181	6855	10.86	10.68	13.78
185	6875	10.75	10.75	13.76	
802.11ax HE40	123	6565	10.84	10.82	13.84
	131	6605	10.81	10.69	13.76
	139	6645	10.79	10.85	13.83
	147	6685	10.9	10.87	13.9
	155	6725	10.75	10.67	13.72
	163	6765	10.81	10.79	13.81
	171	6805	10.75	10.62	13.7
	179	6845	10.69	10.85	13.78
187	6885	10.69	10.67	13.69	
802.11ax HE80	135	6625	10.68	10.85	13.78
	151	6705	10.8	10.74	13.78
	167	6785	10.6	10.67	13.65
802.11ax HE160	183	6865	10.62	10.88	13.76
	143	6665	10.95	10.93	13.95
	175	6825	10.89	10.95	13.93



Conducted Power (Laptop Mode)			
UNII-8 Ant 0			
Mode	Channel	Frequency	SISO Ant 0 Avg. Power
802.11ax HE20	189	6895	10.78
	193	6915	10.78
	197	6935	10.77
	201	6955	10.64
	205	6975	10.64
	209	6995	10.82
	213	7015	10.79
	217	7035	10.71
	221	7055	10.66
	225	7075	10.66
	229	7095	10.64
	233	7115	10.8
802.11ax HE40	195	6925	10.77
	203	6965	10.88
	211	7005	10.69
	219	7045	10.74
	227	7085	10.68
802.11ax HE80	199	6945	10.62
	215	7025	10.79
802.11ax HE160	207	6985	10.97



Conducted Power (Laptop Mode)			
UNII-8 Ant 1			
Mode	Channel	Frequency	SISO Ant 1 Avg. Power
802.11ax HE20	189	6895	10.77
	193	6915	10.75
	197	6935	10.74
	201	6955	10.89
	205	6975	10.86
	209	6995	10.86
	213	7015	10.77
	217	7035	10.63
	221	7055	10.64
	225	7075	10.86
	229	7095	10.71
	233	7115	10.83
802.11ax HE40	195	6925	10.81
	203	6965	10.86
	211	7005	10.67
	219	7045	10.81
	227	7085	10.61
802.11ax HE80	199	6945	10.77
	215	7025	10.67
802.11ax HE160	207	6985	10.92

Conducted Power (Laptop Mode)					
UNII-8 Ant 0+1					
Mode	Channel	Frequency	MIMO Ant 0 Avg. Power	MIMO Ant 1 Avg. Power	MIMO Ant 0+1 Avg. Power
802.11ax HE20	189	6895	10.9	10.89	13.91
	193	6915	10.65	10.62	13.65
	197	6935	10.73	10.74	13.75
	201	6955	10.7	10.74	13.73
	205	6975	10.82	10.78	13.81
	209	6995	10.64	10.82	13.74
	213	7015	10.64	10.77	13.72
	217	7035	10.76	10.73	13.76
	221	7055	10.65	10.66	13.67
	225	7075	10.74	10.68	13.72
	229	7095	10.66	10.75	13.72
	233	7115	10.78	10.67	13.74
802.11ax HE40	195	6925	10.72	10.64	13.69
	203	6965	10.75	10.88	13.83
	211	7005	10.78	10.8	13.8
	219	7045	10.69	10.66	13.69
	227	7085	10.85	10.73	13.8
802.11ax HE80	199	6945	10.8	10.73	13.78
	215	7025	10.6	10.78	13.7
802.11ax HE160	207	6985	10.93	10.95	13.95

Conducted Power (Tablet Mode)			
WLAN2.4GHz Ant 0			
Mode	Channel	Frequency	SISO Ant 0 Avg. Power
802.11b	1	2412	11.93
	6	2437	11.96
	11	2462	11.97
	12	2467	11.94
	13	2472	11.98
802.11g	1	2412	11.72
	6	2437	11.6
	11	2462	11.61
	12	2467	11.63
	13	2472	11.7
802.11n HT20	1	2412	11.63
	6	2437	11.69
	11	2462	11.77
	12	2467	11.62
	13	2472	11.72
802.11n HT40	3	2422	11.67
	6	2437	11.66
	9	2452	11.85
	10	2457	11.72
	11	2462	11.89
802.11ax HE20	1	2412	11.66
	6	2437	11.71
	11	2462	11.66
	12	2467	11.73
	13	2472	11.81
802.11ax HE40	3	2422	11.89
	6	2437	11.79
	9	2452	11.62
	10	2457	11.8
	11	2462	11.76

Conducted Power (Tablet Mode)			
WLAN2.4GHz Ant 1			
Mode	Channel	Frequency	SISO Ant 1 Avg. Power
802.11b	1	2412	11.96
	6	2437	11.94
	11	2462	11.92
	12	2467	11.96
	13	2472	11.99
802.11g	1	2412	11.67
	6	2437	11.75
	11	2462	11.7
	12	2467	11.74
	13	2472	11.79
802.11n HT20	1	2412	11.88
	6	2437	11.83
	11	2462	11.81
	12	2467	11.64
	13	2472	11.74
802.11n HT40	3	2422	11.9
	6	2437	11.81
	9	2452	11.61
	10	2457	11.62
	11	2462	11.71
802.11ax HE20	1	2412	11.88
	6	2437	11.85
	11	2462	11.8
	12	2467	11.66
	13	2472	11.84
802.11ax HE40	3	2422	11.79
	6	2437	11.9
	9	2452	11.76
	10	2457	11.69
	11	2462	11.79

Conducted Power (Tablet Mode)					
WLAN2.4GHz Ant 0+1					
Mode	Channel	Frequency	MIMO Ant 0 Avg. Power	MIMO Ant 1 Avg. Power	MIMO Ant 0+1 Avg. Power
802.11b	1	2412			
	6	2437			
	11	2462			
	12	2467			
	13	2472			
802.11g	1	2412			
	6	2437			
	11	2462			
	12	2467			
	13	2472			
802.11n HT20	1	2412	11.83	11.85	14.85
	6	2437	11.81	11.84	14.84
	11	2462	11.67	11.78	14.74
	12	2467	11.72	11.76	14.75
	13	2472	11.8	11.73	14.78
802.11n HT40	3	2422	11.96	11.94	14.96
	6	2437	11.95	11.98	14.98
	9	2452	11.94	11.92	14.94
	10	2457	11.99	11.98	15.00
	11	2462	11.96	11.97	14.98
802.11ax HE20	1	2412	11.66	11.62	14.65
	6	2437	11.71	11.81	14.77
	11	2462	11.71	11.9	14.82
	12	2467	11.86	11.84	14.86
	13	2472	11.72	11.79	14.77
802.11ax HE40	3	2422	11.7	11.77	14.75
	6	2437	11.87	11.85	14.87
	9	2452	11.72	11.68	14.71
	10	2457	11.79	11.67	14.74
	11	2462	11.81	11.71	14.77



Conducted Power (Tablet Mode)			
Bluetooth Ant 1			
Mode	Channel	Frequency	SISO Ant 1 Avg. Power
BR / EDR	0	2402	9.51
	39	2441	9.65
	78	2480	9.91
LE	0	2402	8.78
	19	2440	8.87
	39	2480	8.85

Conducted Power (Tablet Mode)			
WLAN 5.2GHz Ant 0			
Mode	Channel	Frequency	SISO Ant 0 Avg. Power
802.11a	36	5180	9.74
	40	5200	9.87
	44	5220	9.73
	48	5240	9.86
802.11n HT20	36	5180	9.64
	40	5200	9.83
	44	5220	9.76
	48	5240	9.61
802.11n HT40	38	5190	9.81
	46	5230	9.74
802.11ac VHT20	36	5180	9.71
	40	5200	9.85
	44	5220	9.79
	48	5240	9.89
802.11ac VHT40	38	5190	9.76
	46	5230	9.74
802.11ac VHT80	42	5210	9.62
802.11ax HE20	36	5180	9.86
	40	5200	9.67
	44	5220	9.86
	48	5240	9.67
802.11ax HE40	38	5190	9.67
	46	5230	9.9
802.11ax HE80	42	5210	9.85



Conducted Power (Tablet Mode)			
WLAN 5.2GHz Ant 1			
Mode	Channel	Frequency	SISO Ant 1 Avg. Power
802.11a	36	5180	9.68
	40	5200	9.72
	44	5220	9.62
	48	5240	9.61
802.11n HT20	36	5180	9.8
	40	5200	9.68
	44	5220	9.74
	48	5240	9.64
802.11n HT40	38	5190	9.84
	46	5230	9.85
802.11ac VHT20	36	5180	9.75
	40	5200	9.8
	44	5220	9.81
	48	5240	9.74
802.11ac VHT40	38	5190	9.62
	46	5230	9.87
802.11ac VHT80	42	5210	9.83
802.11ax HE20	36	5180	9.71
	40	5200	9.85
	44	5220	9.81
	48	5240	9.7
802.11ax HE40	38	5190	9.81
	46	5230	9.88
802.11ax HE80	42	5210	9.85

Conducted Power (Tablet Mode)					
WLAN 5.2GHz Ant 0+1					
Mode	Channel	Frequency	MIMO Ant 0 Avg. Power	MIMO Ant 1 Avg. Power	MIMO Ant 0+1 Avg. Power
802.11a	36	5180			
	40	5200			
	44	5220			
	48	5240			
802.11n HT20	36	5180	9.76	9.76	12.77
	40	5200	9.84	9.73	12.8
	44	5220	9.62	9.8	12.72
	48	5240	9.66	9.81	12.75
802.11n HT40	38	5190	9.61	9.81	12.72
	46	5230	9.9	9.73	12.83
802.11ac VHT20	36	5180	9.82	9.81	12.83
	40	5200	9.81	9.82	12.83
	44	5220	9.6	9.72	12.67
	48	5240	9.8	9.6	12.71
802.11ac VHT40	38	5190	9.7	9.65	12.69
	46	5230	9.87	9.77	12.83
802.11ac VHT80	42	5210	9.65	9.63	12.65
802.11ax HE20	36	5180	9.79	9.82	12.82
	40	5200	9.82	9.81	12.83
	44	5220	9.69	9.8	12.76
	48	5240	9.67	9.9	12.8
802.11ax HE40	38	5190	9.73	9.66	12.71
	46	5230	9.87	9.78	12.84
802.11ax HE80	42	5210	9.67	9.83	12.76

Conducted Power (Tablet Mode)			
WLAN 5.3GHz Ant 0			
Mode	Channel	Frequency	SISO Ant 0 Avg. Power
802.11a	52	5260	9.65
	56	5280	9.74
	60	5300	9.85
	64	5320	9.87
802.11n HT20	52	5260	9.66
	56	5280	9.67
	60	5300	9.6
	64	5320	9.81
802.11n HT40	54	5270	9.82
	62	5310	9.77
802.11ac VHT20	52	5260	9.65
	56	5280	9.77
	60	5300	9.65
	64	5320	9.89
802.11ac VHT40	54	5270	9.89
	62	5310	9.68
802.11ac VHT80	58	5290	9.74
802.11ac VHT160	50	5250	9.98
802.11ax HE20	52	5260	9.71
	56	5280	9.81
	60	5300	9.83
	64	5320	9.78
802.11ax HE40	54	5270	9.62
	62	5310	9.74
802.11ax HE80	58	5290	9.79
802.11ax HE160	50	5250	9.99

Conducted Power (Tablet Mode)			
WLAN 5.3GHz Ant 1			
Mode	Channel	Frequency	SISO Ant 1 Avg. Power
802.11a	52	5260	9.78
	56	5280	9.68
	60	5300	9.63
	64	5320	9.84
802.11n HT20	52	5260	9.89
	56	5280	9.9
	60	5300	9.66
	64	5320	9.63
802.11n HT40	54	5270	9.9
	62	5310	9.86
802.11ac VHT20	52	5260	9.83
	56	5280	9.78
	60	5300	9.81
	64	5320	9.71
802.11ac VHT40	54	5270	9.75
	62	5310	9.83
802.11ac VHT80	58	5290	9.84
802.11ac VHT160	50	5250	9.95
802.11ax HE20	52	5260	9.77
	56	5280	9.85
	60	5300	9.78
	64	5320	9.9
802.11ax HE40	54	5270	9.78
	62	5310	9.84
802.11ax HE80	58	5290	9.85
802.11ax HE160	50	5250	9.96

Conducted Power (Tablet Mode)					
WLAN 5.3GHz Ant 0+1					
Mode	Channel	Frequency	MIMO Ant 0 Avg. Power	MIMO Ant 1 Avg. Power	MIMO Ant 0+1 Avg. Power
802.11a	52	5260			
	56	5280			
	60	5300			
	64	5320			
802.11n HT20	52	5260	9.71	9.84	12.79
	56	5280	9.88	9.84	12.87
	60	5300	9.84	9.61	12.74
	64	5320	9.77	9.89	12.84
802.11n HT40	54	5270	9.75	9.66	12.72
	62	5310	9.61	9.88	12.76
802.11ac VHT20	52	5260	9.68	9.61	12.66
	56	5280	9.63	9.66	12.66
	60	5300	9.78	9.75	12.78
	64	5320	9.89	9.87	12.89
802.11ac VHT40	54	5270	9.88	9.9	12.9
	62	5310	9.61	9.74	12.69
802.11ac VHT80	58	5290	9.79	9.66	12.74
802.11ac VHT160	50	5250	9.95	9.99	12.98
802.11ax HE20	52	5260	9.87	9.78	12.84
	56	5280	9.81	9.81	12.82
	60	5300	9.77	9.76	12.78
	64	5320	9.85	9.75	12.81
802.11ax HE40	54	5270	9.81	9.7	12.77
	62	5310	9.69	9.77	12.74
802.11ax HE80	58	5290	9.78	9.68	12.74
802.11ax HE160	50	5250	9.97	9.98	12.99

Conducted Power (Tablet Mode)			
WLAN 5.6GHz Ant 0			
Mode	Channel	Frequency	SISO Ant 0 Avg. Power
802.11a	100	5500	9.9
	116	5580	9.64
	120	5600	9.62
	124	5620	9.86
	132	5660	9.73
	140	5700	9.68
	144	5720	9.76
802.11n HT20	100	5500	9.85
	116	5580	9.67
	120	5600	9.78
	124	5620	9.83
	132	5660	9.72
	140	5700	9.62
802.11n HT40	102	5510	9.73
	110	5550	9.72
	118	5590	9.64
	126	5630	9.83
	134	5670	9.68
	142	5710	9.74
802.11ac VHT20	100	5500	9.75
	116	5580	9.74
	120	5600	9.84
	124	5620	9.87
	132	5660	9.7
	140	5700	9.83
	144	5720	9.66
802.11ac VHT40	102	5510	9.66
	110	5550	9.74
	118	5590	9.86
	126	5630	9.83
	134	5670	9.6
	142	5710	9.6
802.11ac VHT80	106	5530	9.94
	122	5610	9.94
	138	5690	9.97
802.11ac VHT160	114	5570	9.26
802.11ax HE20	100	5500	9.84
	116	5580	9.82
	120	5600	9.67
	124	5620	9.85
	132	5660	9.76
	140	5700	9.77
	144	5720	9.75
802.11ax HE40	102	5510	9.65
	110	5550	9.69
	118	5590	9.65
	126	5630	9.86
	134	5670	9.75
	142	5710	9.85
802.11ax HE80	106	5530	9.97
	122	5610	9.95
	138	5690	9.98
802.11ax HE160	114	5570	9.35

Conducted Power (Tablet Mode)			
WLAN 5.6GHz Ant 1			
Mode	Channel	Frequency	SISO Ant 1 Avg. Power
802.11a	100	5500	9.73
	116	5580	9.71
	120	5600	9.69
	124	5620	9.6
	132	5660	9.76
	140	5700	9.7
	144	5720	9.75
802.11n HT20	100	5500	9.8
	116	5580	9.7
	120	5600	9.76
	124	5620	9.67
	132	5660	9.67
	140	5700	9.88
802.11n HT40	102	5510	9.83
	110	5550	9.9
	118	5590	9.7
	126	5630	9.69
	134	5670	9.74
	142	5710	9.72
802.11ac VHT20	100	5500	9.6
	116	5580	9.68
	120	5600	9.76
	124	5620	9.69
	132	5660	9.62
	140	5700	9.67
	144	5720	9.86
802.11ac VHT40	102	5510	9.65
	110	5550	9.63
	118	5590	9.7
	126	5630	9.71
	134	5670	9.65
	142	5710	9.82
802.11ac VHT80	106	5530	9.95
	122	5610	9.91
	138	5690	9.97
802.11ac VHT160	114	5570	9.22
802.11ax HE20	100	5500	9.68
	116	5580	9.9
	120	5600	9.78
	124	5620	9.68
	132	5660	9.84
	140	5700	9.83
	144	5720	9.6
802.11ax HE40	102	5510	9.72
	110	5550	9.82
	118	5590	9.8
	126	5630	9.67
	134	5670	9.9
	142	5710	9.83
802.11ax HE80	106	5530	9.94
	122	5610	9.95
	138	5690	9.98
802.11ax HE160	114	5570	9.32

Conducted Power (Tablet Mode)					
WLAN 5.6GHz Ant 0+1					
Mode	Channel	Frequency	MIMO Ant 0 Avg. Power	MIMO Ant 1 Avg. Power	MIMO Ant 0+1 Avg. Power
802.11a	100	5500			
	116	5580			
	120	5600			
	124	5620			
	132	5660			
	140	5700			
	144	5720			
802.11n HT20	100	5500	9.71	9.68	12.71
	116	5580	9.85	9.77	12.82
	120	5600	9.74	9.83	12.8
	124	5620	9.72	9.79	12.77
	132	5660	9.69	9.8	12.76
	140	5700	9.74	9.9	12.83
	144	5720	9.85	9.67	12.77
802.11n HT40	102	5510	9.8	9.69	12.76
	110	5550	9.69	9.66	12.69
	118	5590	9.76	9.64	12.71
	126	5630	9.9	9.79	12.86
	134	5670	9.63	9.67	12.66
	142	5710	9.65	9.85	12.76
	100	5500	9.7	9.79	12.76
802.11ac VHT20	116	5580	9.86	9.64	12.76
	120	5600	9.9	9.6	12.76
	124	5620	9.71	9.64	12.69
	132	5660	9.62	9.78	12.71
	140	5700	9.75	9.7	12.74
	144	5720	9.63	9.71	12.68
	102	5510	9.71	9.8	12.77
802.11ac VHT40	110	5550	9.6	9.71	12.67
	118	5590	9.82	9.78	12.81
	126	5630	9.82	9.63	12.74
	134	5670	9.68	9.74	12.72
	142	5710	9.77	9.89	12.84
	106	5530	9.92	9.92	12.93
	802.11ac VHT80	122	5610	9.87	9.91
138		5690	9.96	9.89	12.94
802.11ac VHT160	114	5570	9.27	9.25	12.27
802.11ax HE20	100	5500	9.79	9.84	12.83
	116	5580	9.85	9.7	12.79
	120	5600	9.66	9.64	12.66
	124	5620	9.65	9.9	12.79
	132	5660	9.68	9.81	12.76
	140	5700	9.66	9.66	12.67
	144	5720	9.9	9.65	12.79
802.11ax HE40	102	5510	9.79	9.84	12.83
	110	5550	9.69	9.79	12.75
	118	5590	9.84	9.76	12.81
	126	5630	9.86	9.66	12.77
	134	5670	9.83	9.83	12.84
	142	5710	9.78	9.88	12.84
802.11ax HE80	106	5530	9.94	9.94	12.95
	122	5610	9.89	9.93	12.92
	138	5690	9.98	9.91	12.96
802.11ax HE160	114	5570	9.35	9.36	12.37

Conducted Power (Tablet Mode)			
WLAN 5.8GHz Ant 0			
Mode	Channel	Frequency	SISO Ant 0 Avg. Power
802.11a	149	5745	9.78
	153	5765	9.9
	157	5785	9.79
	161	5805	9.74
	165	5825	9.9
802.11n HT20	149	5745	9.9
	153	5765	9.9
	157	5785	9.68
	161	5805	9.77
	165	5825	9.79
802.11n HT40	151	5755	9.8
	159	5795	9.88
802.11ac VHT20	149	5745	9.63
	153	5765	9.86
	157	5785	9.65
	161	5805	9.72
	165	5825	9.64
802.11ac VHT40	151	5755	9.79
	159	5795	9.72
802.11ac VHT80	155	5775	9.82
802.11ax HE20	149	5745	9.74
	153	5765	9.77
	157	5785	9.81
	161	5805	9.76
	165	5825	9.73
802.11ax HE40	151	5755	9.76
	159	5795	9.84
802.11ax HE80	155	5775	9.95

Conducted Power (Tablet Mode)			
WLAN 5.8GHz Ant 1			
Mode	Channel	Frequency	SISO Ant 1 Avg. Power
802.11a	149	5745	9.84
	153	5765	9.73
	157	5785	9.84
	161	5805	9.84
	165	5825	9.73
802.11n HT20	149	5745	9.89
	153	5765	9.62
	157	5785	9.6
	161	5805	9.72
	165	5825	9.78
802.11n HT40	151	5755	9.71
	159	5795	9.84
802.11ac VHT20	149	5745	9.68
	153	5765	9.69
	157	5785	9.9
	161	5805	9.67
	165	5825	9.74
802.11ac VHT40	151	5755	9.73
	159	5795	9.73
802.11ac VHT80	155	5775	9.96
802.11ax HE20	149	5745	9.7
	153	5765	9.76
	157	5785	9.75
	161	5805	9.65
	165	5825	9.68
802.11ax HE40	151	5755	9.77
	159	5795	9.83
802.11ax HE80	155	5775	9.97

Conducted Power (Tablet Mode)					
WLAN 5.8GHz Ant 0+1					
Mode	Channel	Frequency	MIMO Ant 0 Avg. Power	MIMO Ant 1 Avg. Power	MIMO Ant 0+1 Avg. Power
802.11a	149	5745			
	153	5765			
	157	5785			
	161	5805			
	165	5825			
802.11n HT20	149	5745	9.73	9.71	12.73
	153	5765	9.68	9.82	12.76
	157	5785	9.66	9.68	12.68
	161	5805	9.61	9.78	12.71
	165	5825	9.77	9.61	12.7
802.11n HT40	151	5755	9.73	9.8	12.78
	159	5795	9.89	9.9	12.91
802.11ac VHT20	149	5745	9.72	9.75	12.75
	153	5765	9.67	9.77	12.73
	157	5785	9.7	9.83	12.78
	161	5805	9.76	9.83	12.81
	165	5825	9.62	9.85	12.75
802.11ac VHT40	151	5755	9.64	9.7	12.68
	159	5795	9.75	9.64	12.71
802.11ac VHT80	155	5775	9.93	9.96	12.96
802.11ax HE20	149	5745	9.78	9.87	12.84
	153	5765	9.67	9.81	12.75
	157	5785	9.89	9.87	12.89
	161	5805	9.84	9.67	12.77
	165	5825	9.79	9.76	12.79
802.11ax HE40	151	5755	9.69	9.87	12.79
	159	5795	9.76	9.76	12.77
802.11ax HE80	155	5775	9.95	9.98	12.98

Conducted Power (Tablet Mode)			
WLAN 5.9GHz Ant 0			
Mode	Channel	Frequency	SISO Ant 0 Avg. Power
802.11a	169	5845	9.82
	173	5865	9.86
	177	5885	9.84
802.11n HT20	169	5845	9.88
	173	5865	9.85
	177	5885	9.88
802.11n HT40	167	5835	9.87
	175	5875	9.89
802.11ac VHT20	169	5845	9.86
	173	5865	9.89
	177	5885	9.91
802.11ac VHT40	167	5835	9.85
	175	5875	9.84
802.11ac VHT80	171	5855	9.87
802.11ac VHT160	163	5815	9.88
802.11ax HE20	169	5845	9.89
	173	5865	9.91
	177	5885	9.88
802.11ax HE40	167	5835	9.92
	175	5875	9.95
802.11ax HE80	171	5855	9.96
802.11ax HE160	163	5815	9.98

Conducted Power (Tablet Mode)			
WLAN 5.9GHz Ant 1			
Mode	Channel	Frequency	SISO Ant 1 Avg. Power
802.11a	169	5845	9.86
	173	5865	9.85
	177	5885	9.82
802.11n HT20	169	5845	9.88
	173	5865	9.83
	177	5885	9.84
802.11n HT40	167	5835	9.88
	175	5875	9.82
802.11ac VHT20	169	5845	9.86
	173	5865	9.85
	177	5885	9.89
802.11ac VHT40	167	5835	9.84
	175	5875	9.87
802.11ac VHT80	171	5855	9.86
802.11ac VHT160	163	5815	9.89
802.11ax HE20	169	5845	9.92
	173	5865	9.96
	177	5885	9.95
802.11ax HE40	167	5835	9.91
	175	5875	9.88
802.11ax HE80	171	5855	9.93
802.11ax HE160	163	5815	9.95

Conducted Power (Tablet Mode)					
WLAN 5.9GHz Ant 0+1					
Mode	Channel	Frequency	MIMO Ant 0 Avg. Power	MIMO Ant 1 Avg. Power	MIMO Ant 0+1 Avg. Power
802.11a	169	5845			
	173	5865			
	177	5885			
802.11n HT20	169	5845	9.89	9.87	12.89
	173	5865	9.88	9.85	12.88
	177	5885	9.85	9.82	12.85
802.11n HT40	167	5835	9.83	9.88	12.87
	175	5875	9.86	9.84	12.86
802.11ac VHT20	169	5845	9.81	9.83	12.83
	173	5865	9.82	9.87	12.86
	177	5885	9.86	9.84	12.86
802.11ac VHT40	167	5835	9.85	9.83	12.85
	175	5875	9.89	9.86	12.89
802.11ac VHT80	171	5855	9.87	9.89	12.89
802.11ac VHT160	163	5815	9.84	9.93	12.9
802.11ax HE20	169	5845	9.88	9.4	12.66
	173	5865	9.88	9.92	12.91
	177	5885	9.89	9.95	12.93
802.11ax HE40	167	5835	9.95	9.92	12.95
	175	5875	9.92	9.89	12.92
802.11ax HE80	171	5855	9.89	8.91	12.44
802.11ax HE160	163	5815	9.96	9.95	12.97



Conducted Power (Tablet Mode)			
UNII-5 Ant 0			
Mode	Channel	Frequency	SISO Ant 0 Avg. Power
802.11ax HE20	1	5955	7.84
	5	5975	7.79
	9	5995	7.9
	13	6015	7.86
	17	6035	7.82
	21	6055	7.82
	25	6075	7.73
	29	6095	7.73
	33	6115	7.62
	37	6135	7.75
	41	6155	7.65
	45	6175	7.9
	49	6195	7.83
	53	6215	7.76
	57	6235	7.61
	61	6255	7.65
	65	6275	7.64
	69	6295	7.76
	73	6315	7.76
	77	6335	7.87
81	6355	7.79	
85	6375	7.66	
89	6395	7.79	
93	6415	7.89	

Conducted Power (Tablet Mode)			
UNII-5 Ant 1			
Mode	Channel	Frequency	SISO Ant 1 Avg. Power
802.11ax HE20	1	5955	7.81
	5	5975	7.78
	9	5995	7.74
	13	6015	7.64
	17	6035	7.88
	21	6055	7.63
	25	6075	7.71
	29	6095	7.9
	33	6115	7.69
	37	6135	7.86
	41	6155	7.83
	45	6175	7.75
	49	6195	7.64
	53	6215	7.87
	57	6235	7.78
	61	6255	7.89
	65	6275	7.68
	69	6295	7.86
	73	6315	7.63
	77	6335	7.61
81	6355	7.63	
85	6375	7.78	
89	6395	7.84	
93	6415	7.72	

Conducted Power (Tablet Mode)					
UNII-5 Ant 0+1					
Mode	Channel	Frequency	MIMO Ant 0 Avg. Power	MIMO Ant 1 Avg. Power	MIMO Ant 0+1 Avg. Power
802.11ax HE20	1	5955	7.77	7.9	10.85
	5	5975	7.66	7.81	10.75
	9	5995	7.85	7.64	10.76
	13	6015	7.83	7.7	10.78
	17	6035	7.9	7.71	10.82
	21	6055	7.9	7.83	10.88
	25	6075	7.78	7.64	10.72
	29	6095	7.68	7.9	10.8
	33	6115	7.9	7.67	10.8
	37	6135	7.71	7.61	10.67
	41	6155	7.8	7.87	10.85
	45	6175	7.61	7.69	10.66
	49	6195	7.88	7.83	10.87
	53	6215	7.73	7.78	10.77
	57	6235	7.88	7.79	10.85
	61	6255	7.76	7.85	10.82
	65	6275	7.7	7.8	10.76
	69	6295	7.88	7.84	10.87
	73	6315	7.77	7.71	10.75
	77	6335	7.65	7.66	10.67
81	6355	7.71	7.74	10.74	
85	6375	7.73	7.64	10.7	
89	6395	7.6	7.62	10.62	
93	6415	7.64	7.74	10.7	



Conducted Power (Tablet Mode)			
UNII-5 Ant 0			
Mode	Channel	Frequency	SISO Ant 0 Avg. Power
802.11ax HE40	3	5965	7.63
	11	6005	7.68
	19	6045	7.65
	27	6085	7.6
	35	6125	7.77
	43	6165	7.88
	51	6205	7.85
	59	6245	7.9
	67	6285	7.73
	75	6325	7.68
	83	6365	7.75
802.11ax HE80	91	6405	7.74
	7	5985	7.65
	23	6065	7.63
	39	6145	7.77
	55	6225	7.85
	71	6305	7.89
802.11ax HE160	87	6385	7.83
	15	6025	7.92
	47	6185	7.97
	79	6345	7.99

Conducted Power (Tablet Mode)			
UNII-5 Ant 1			
Mode	Channel	Frequency	SISO Ant 1 Avg. Power
802.11ax HE40	3	5965	7.6
	11	6005	7.78
	19	6045	7.6
	27	6085	7.67
	35	6125	7.72
	43	6165	7.63
	51	6205	7.86
	59	6245	7.83
	67	6285	7.76
	75	6325	7.85
	83	6365	7.88
802.11ax HE80	91	6405	7.8
	7	5985	7.61
	23	6065	7.71
	39	6145	7.63
	55	6225	7.6
	71	6305	7.73
802.11ax HE160	87	6385	7.67
	15	6025	7.93
	47	6185	7.92
	79	6345	7.99

Conducted Power (Tablet Mode)					
UNII-5 Ant 0+1					
Mode	Channel	Frequency	MIMO Ant 0 Avg. Power	MIMO Ant 1 Avg. Power	MIMO Ant 0+1 Avg. Power
802.11ax HE40	3	5965	7.61	7.68	10.66
	11	6005	7.77	7.7	10.75
	19	6045	7.6	7.82	10.72
	27	6085	7.85	7.66	10.77
	35	6125	7.66	7.82	10.75
	43	6165	7.82	7.85	10.85
	51	6205	7.7	7.7	10.71
	59	6245	7.9	7.79	10.86
	67	6285	7.86	7.64	10.76
	75	6325	7.73	7.89	10.82
	83	6365	7.79	7.61	10.71
802.11ax HE80	91	6405	7.68	7.82	10.76
	7	5985	7.67	7.78	10.74
	23	6065	7.61	7.64	10.64
	39	6145	7.63	7.69	10.67
	55	6225	7.71	7.64	10.69
	71	6305	7.63	7.72	10.69
802.11ax HE160	87	6385	7.77	7.61	10.7
	15	6025	7.91	7.89	10.91
	47	6185	7.96	7.89	10.94
	79	6345	7.97	7.98	10.99

Conducted Power (Tablet Mode)			
UNII-6 Ant 0			
Mode	Channel	Frequency	SISO Ant 0 Avg. Power
802.11ax HE20	97	6435	7.66
	101	6455	7.89
	105	6475	7.87
	109	6495	7.85
	113	6515	7.9
	117	6535	7.65
802.11ax HE40	99	6445	7.64
	107	6485	7.72
	115	6525	7.78
802.11ax HE80	103	6465	7.78
	119	6545	7.71
802.11ax HE160	111	6505	7.92



Conducted Power (Tablet Mode)			
UNII-6 Ant 1			
Mode	Channel	Frequency	SISO Ant 1 Avg. Power
802.11ax HE20	97	6435	7.7
	101	6455	7.64
	105	6475	7.67
	109	6495	7.66
	113	6515	7.81
	117	6535	7.71
802.11ax HE40	99	6445	7.62
	107	6485	7.61
	115	6525	7.76
802.11ax HE80	103	6465	7.87
	119	6545	7.79
802.11ax HE160	111	6505	7.96



Conducted Power (Tablet Mode)					
UNII-6 Ant 0+1					
Mode	Channel	Frequency	MIMO Ant 0 Avg. Power	MIMO Ant 1 Avg. Power	MIMO Ant 0+1 Avg. Power
802.11ax HE20	97	6435	7.68	7.87	10.79
	101	6455	7.75	7.8	10.79
	105	6475	7.65	7.72	10.7
	109	6495	7.81	7.88	10.86
	113	6515	7.72	7.62	10.68
	117	6535	7.64	7.77	10.72
802.11ax HE40	99	6445	7.7	7.65	10.69
	107	6485	7.62	7.72	10.68
	115	6525	7.9	7.63	10.78
802.11ax HE80	103	6465	7.6	7.72	10.67
	119	6545	7.74	7.78	10.77
802.11ax HE160	111	6505	7.93	7.95	10.95



Conducted Power (Tablet Mode)			
UNII-7 Ant 0			
Mode	Channel	Frequency	SISO Ant 0 Avg. Power
802.11ax HE20	121	6555	6.11
	125	6575	6.1
	129	6595	6.17
	133	6615	6.12
	137	6635	6.26
	141	6655	6.29
	145	6675	6.37
	149	6695	6.22
	153	6715	6.3
	157	6735	6.14
	161	6755	6.36
	165	6775	6.38
	169	6795	6.36
	173	6815	6.3
	177	6835	6.16
	181	6855	6.4
185	6875	6.18	
802.11ax HE40	123	6565	6.19
	131	6605	6.36
	139	6645	6.17
	147	6685	6.34
	155	6725	6.4
	163	6765	6.39
	171	6805	6.32
	179	6845	6.39
187	6885	6.32	
802.11ax HE80	135	6625	6.34
	151	6705	6.32
	167	6785	6.24
802.11ax HE160	183	6865	6.22
	143	6665	6.47
	175	6825	6.42



Conducted Power (Tablet Mode)			
UNII-7 Ant 1			
Mode	Channel	Frequency	SISO Ant 1 Avg. Power
802.11ax HE20	121	6555	7.81
	125	6575	7.71
	129	6595	7.73
	133	6615	7.69
	137	6635	7.76
	141	6655	7.69
	145	6675	7.71
	149	6695	7.79
	153	6715	7.83
	157	6735	7.69
	161	6755	7.79
	165	6775	7.87
	169	6795	7.64
	173	6815	7.79
	177	6835	7.63
	181	6855	7.68
185	6875	7.82	
802.11ax HE40	123	6565	7.68
	131	6605	7.71
	139	6645	7.77
	147	6685	7.71
	155	6725	7.86
	163	6765	7.81
	171	6805	7.9
	179	6845	7.84
187	6885	7.74	
802.11ax HE80	135	6625	7.89
	151	6705	7.83
	167	6785	7.83
802.11ax HE160	183	6865	7.66
	143	6665	7.95
	175	6825	7.93

Conducted Power (Tablet Mode)					
UNII-7 Ant 0+1					
Mode	Channel	Frequency	MIMO Ant 0 Avg. Power	MIMO Ant 1 Avg. Power	MIMO Ant 0+1 Avg. Power
802.11ax HE20	121	6555	6.31	7.68	10.06
	125	6575	6.39	7.66	10.08
	129	6595	6.31	7.71	10.08
	133	6615	6.35	7.8	10.15
	137	6635	6.19	7.89	10.13
	141	6655	6.35	7.85	10.17
	145	6675	6.37	7.69	10.09
	149	6695	6.4	7.88	10.21
	153	6715	6.35	7.65	10.06
	157	6735	6.15	7.83	10.08
	161	6755	6.21	7.84	10.11
	165	6775	6.38	7.89	10.21
	169	6795	6.31	7.66	10.05
	173	6815	6.18	7.7	10.02
	177	6835	6.25	7.7	10.05
	181	6855	6.11	7.65	9.96
	185	6875	6.3	7.74	10.09
802.11ax HE40	123	6565	6.21	7.77	10.07
	131	6605	6.33	7.71	10.08
	139	6645	6.19	7.8	10.08
	147	6685	6.35	7.63	10.05
	155	6725	6.26	7.79	10.1
	163	6765	6.16	7.65	9.98
	171	6805	6.29	7.71	10.07
	179	6845	6.31	7.7	10.07
	187	6885	6.4	7.69	10.1
802.11ax HE80	135	6625	6.21	7.73	10.05
	151	6705	6.32	7.63	10.03
	167	6785	6.15	7.64	9.97
	183	6865	6.16	7.89	10.12
802.11ax HE160	143	6665	6.42	7.96	10.27
	175	6825	6.39	7.94	10.24



Conducted Power (Tablet Mode)			
UNII-8 Ant 0			
Mode	Channel	Frequency	SISO Ant 0 Avg. Power
802.11ax HE20	189	6895	6.38
	193	6915	6.27
	197	6935	6.39
	201	6955	6.22
	205	6975	6.2
	209	6995	6.24
	213	7015	6.14
	217	7035	6.23
	221	7055	6.23
	225	7075	6.36
	229	7095	6.32
802.11ax HE40	233	7115	6.21
	195	6925	6.21
	203	6965	6.3
	211	7005	6.23
	219	7045	6.13
802.11ax HE80	227	7085	6.15
	199	6945	6.24
802.11ax HE160	215	7025	6.11
	207	6985	6.46



Conducted Power (Tablet Mode)			
UNII-8 Ant 1			
Mode	Channel	Frequency	SISO Ant 1 Avg. Power
802.11ax HE20	189	6895	7.78
	193	6915	7.64
	197	6935	7.85
	201	6955	7.8
	205	6975	7.9
	209	6995	7.75
	213	7015	7.87
	217	7035	7.68
	221	7055	7.81
	225	7075	7.63
	229	7095	7.87
233	7115	7.75	
802.11ax HE40	195	6925	7.75
	203	6965	7.76
	211	7005	7.88
	219	7045	7.62
	227	7085	7.66
802.11ax HE80	199	6945	7.78
	215	7025	7.69
802.11ax HE160	207	6985	7.96

Conducted Power (Tablet Mode)					
UNII-8 Ant 0+1					
Mode	Channel	Frequency	MIMO Ant 0 Avg. Power	MIMO Ant 1 Avg. Power	MIMO Ant 0+1 Avg. Power
802.11ax HE20	189	6895	6.15	7.84	10.09
	193	6915	6.29	7.87	10.16
	197	6935	6.33	7.64	10.04
	201	6955	6.34	7.61	10.03
	205	6975	6.16	7.88	10.11
	209	6995	6.24	7.62	9.99
	213	7015	6.32	7.76	10.11
	217	7035	6.27	7.77	10.09
	221	7055	6.28	7.77	10.1
	225	7075	6.15	7.65	9.97
	229	7095	6.37	7.62	10.05
	233	7115	6.38	7.87	10.2
802.11ax HE40	195	6925	6.11	7.77	10.03
	203	6965	6.14	7.62	9.95
	211	7005	6.24	7.7	10.04
	219	7045	6.3	7.69	10.06
	227	7085	6.37	7.77	10.14
802.11ax HE80	199	6945	6.16	7.87	10.11
	215	7025	6.14	7.69	9.99
802.11ax HE160	207	6985	6.43	7.95	10.27

Appendix F. SAR and Incident Power Density Test Result

SAR Results for Body Exposure Condition.

Note:

1. SAR testing for WLAN / BT was performed on the maximum power mode.
2. The "< 0.001" means there is no SAR value or the SAR is too low to be measured.
3. Per KDB 388624 APPENDIX OVER6G, the minimum of 5 channels to perform IPD across U-NII 5,6,7 and 8. and measured results were scaled by factor 1.545 to reported power density when measurement uncertainty exceed 30%.



Body SAR Test Result

Body SAR Test Result															
System & Position						DUT Configuration		SAR							
Plot No.	Band	Mode	Test Position	Separation Distance (mm)	Channel	Sample	Ant Status	Duty Cycle	Crest Factor	Max. Tune-up Power (dBm)	Measured Conducted Power (dBm)	Scaling Factor	Power Drift (dB)	Measured SAR-1g (W/kg)	Scaled SAR-1g (W/kg)
	WLAN2.4G	802.11b	Bottom of Laptop	0	13	AWAN	Ant 0	98.90	1.01	12.50	12.48	1.00	0.19	0.466	0.47
	WLAN2.4G	802.11b	Bottom of Laptop	0	13	AWAN	Ant 1	99.10	1.01	12.50	12.48	1.00	0.14	0.355	0.36
	WLAN2.4G	802.11n HT40	Bottom of Laptop	0	10	AWAN	Ant 0+1	99.10	1.01	15.50	15.50	1.00	0.18	0.381	0.38
	WLAN2.4G	802.11b	Rear Face	0	13	AWAN	Ant 0	98.90	1.01	12.00	11.98	1.00	-0.01	0.505	0.51
	WLAN2.4G	802.11b	Left Side	0	13	AWAN	Ant 0	98.90	1.01	12.00	11.98	1.00	0	<0.001	0.00
	WLAN2.4G	802.11b	Right Side	0	13	AWAN	Ant 0	98.90	1.01	12.00	11.98	1.00	0	<0.001	0.00
	WLAN2.4G	802.11b	Top Side	0	13	AWAN	Ant 0	98.90	1.01	12.00	11.98	1.00	0	<0.001	0.00
	WLAN2.4G	802.11b	Bottom Side	0	13	AWAN	Ant 0	98.90	1.01	12.00	11.98	1.00	0.08	0.251	0.25
	WLAN2.4G	802.11b	Rear Face	0	13	AWAN	Ant 1	99.10	1.01	12.00	11.99	1.00	0.06	0.475	0.48
	WLAN2.4G	802.11b	Left Side	0	13	AWAN	Ant 1	99.10	1.01	12.00	11.99	1.00	0	<0.001	0.00
	WLAN2.4G	802.11b	Right Side	0	13	AWAN	Ant 1	99.10	1.01	12.00	11.99	1.00	0	<0.001	0.00
	WLAN2.4G	802.11b	Top Side	0	13	AWAN	Ant 1	99.10	1.01	12.00	11.99	1.00	0	<0.001	0.00
	WLAN2.4G	802.11b	Bottom Side	0	13	AWAN	Ant 1	99.10	1.01	12.00	11.99	1.00	0.04	0.303	0.31
	WLAN2.4G	802.11n HT40	Rear Face	0	10	AWAN	Ant 0+1	99.10	1.01	15.00	15.00	1.00	0.04	0.519	0.52
	WLAN2.4G	802.11n HT40	Left Side	0	10	AWAN	Ant 0+1	99.10	1.01	15.00	15.00	1.00	0	<0.001	0.00
	WLAN2.4G	802.11n HT40	Right Side	0	10	AWAN	Ant 0+1	99.10	1.01	15.00	15.00	1.00	0	<0.001	0.00
	WLAN2.4G	802.11n HT40	Top Side	0	10	AWAN	Ant 0+1	99.10	1.01	15.00	15.00	1.00	0	<0.001	0.00
	WLAN2.4G	802.11n HT40	Bottom Side	0	10	AWAN	Ant 0+1	99.10	1.01	15.00	15.00	1.00	0.04	0.352	0.36
	WLAN2.4G	802.11n HT40	Rear Face	0	3	AWAN	Ant 0+1	99.10	1.01	15.00	14.96	1.01	0.01	0.569	0.58
	WLAN2.4G	802.11n HT40	Rear Face	0	6	AWAN	Ant 0+1	99.10	1.01	15.00	14.98	1.00	-0.17	0.551	0.56
	WLAN2.4G	802.11n HT40	Rear Face	0	9	AWAN	Ant 0+1	99.10	1.01	15.00	14.94	1.01	-0.08	0.562	0.57
1	WLAN2.4G	802.11n HT40	Rear Face	0	11	AWAN	Ant 0+1	99.10	1.01	15.00	14.98	1.00	-0.01	0.584	0.59
	WLAN2.4G	802.11n HT40	Rear Face	0	11	INPAQ	Ant 0+1	99.10	1.01	15.00	14.98	1.00	0.16	0.566	0.57



Body SAR Test Result

System & Position						DUT Configuration		SAR							
Plot No.	Band	Mode	Test Position	Separation Distance (mm)	Channel	Sample	Ant Status	Duty Cycle	Crest Factor	Max. Tune-up Power (dBm)	Measured Conducted Power (dBm)	Scaling Factor	Power Drift (dB)	Measured SAR-1g (W/kg)	Scaled SAR-1g (W/kg)
	WLAN5.3G	802.11ac VHT160	Bottom of Laptop	0	50	AWAN	Ant 0	97.50	1.03	10.50	10.47	1.01	0.06	0.672	0.70
	WLAN5.3G	802.11ac VHT160	Bottom of Laptop	0	50	AWAN	Ant 1	97.90	1.02	10.50	10.48	1.00	0.02	0.666	0.68
2	WLAN5.3G	802.11ac VHT160	Bottom of Laptop	0	50	AWAN	Ant 0+1	97.50	1.03	13.50	13.49	1.00	-0.08	0.802	0.83
	WLAN5.3G	802.11ac VHT160	Rear Face	0	50	AWAN	Ant 0	97.50	1.03	10.00	9.98	1.00	0.05	0.575	0.59
	WLAN5.3G	802.11ac VHT160	Left Side	0	50	AWAN	Ant 0	97.50	1.03	10.00	9.98	1.00	0	<0.001	0.00
	WLAN5.3G	802.11ac VHT160	Right Side	0	50	AWAN	Ant 0	97.50	1.03	10.00	9.98	1.00	0	<0.001	0.00
	WLAN5.3G	802.11ac VHT160	Top Side	0	50	AWAN	Ant 0	97.50	1.03	10.00	9.98	1.00	0	<0.001	0.00
	WLAN5.3G	802.11ac VHT160	Bottom Side	0	50	AWAN	Ant 0	97.50	1.03	10.00	9.98	1.00	0.06	0.761	0.78
	WLAN5.3G	802.11ac VHT160	Rear Face	0	50	AWAN	Ant 1	97.90	1.02	10.00	9.95	1.01	-0.14	0.6	0.62
	WLAN5.3G	802.11ac VHT160	Left Side	0	50	AWAN	Ant 1	97.90	1.02	10.00	9.95	1.01	0	<0.001	0.00
	WLAN5.3G	802.11ac VHT160	Right Side	0	50	AWAN	Ant 1	97.90	1.02	10.00	9.95	1.01	0	<0.001	0.00
	WLAN5.3G	802.11ac VHT160	Top Side	0	50	AWAN	Ant 1	97.90	1.02	10.00	9.95	1.01	0	<0.001	0.00
	WLAN5.3G	802.11ac VHT160	Bottom Side	0	50	AWAN	Ant 1	97.90	1.02	10.00	9.95	1.01	-0.06	0.528	0.54
	WLAN5.3G	802.11ac VHT160	Rear Face	0	50	AWAN	Ant 0+1	97.50	1.03	13.00	12.98	1.00	-0.14	0.523	0.54
	WLAN5.3G	802.11ac VHT160	Left Side	0	50	AWAN	Ant 0+1	97.50	1.03	13.00	12.98	1.00	0	<0.001	0.00
	WLAN5.3G	802.11ac VHT160	Right Side	0	50	AWAN	Ant 0+1	97.50	1.03	13.00	12.98	1.00	0	<0.001	0.00
	WLAN5.3G	802.11ac VHT160	Top Side	0	50	AWAN	Ant 0+1	97.50	1.03	13.00	12.98	1.00	0	<0.001	0.00
	WLAN5.3G	802.11ac VHT160	Bottom Side	0	50	AWAN	Ant 0+1	97.50	1.03	13.00	12.98	1.00	-0.04	0.788	0.81
	WLAN5.3G	802.11ac VHT160	Bottom of Laptop	0	50	INPAQ	Ant 0+1	97.50	1.03	13.50	13.49	1.00	-0.01	0.797	0.82
	WLAN5.3G	802.11ac VHT160	Bottom of Laptop	0	50	AWAN	Ant 0+1	97.50	1.03	13.50	13.49	1.00	-0.14	0.762	0.78



Body SAR Test Result

System & Position						DUT Configuration		SAR							
Plot No.	Band	Mode	Test Position	Separation Distance (mm)	Channel	Sample	Ant Status	Duty Cycle	Crest Factor	Max. Tune-up Power (dBm)	Measured Conducted Power (dBm)	Scaling Factor	Power Drift (dB)	Measured SAR-1g (W/kg)	Scaled SAR-1g (W/kg)
	WLAN5.6G	802.11ac VHT80	Bottom of Laptop	0	138	AWAN	Ant 0	98.60	1.01	10.50	10.43	1.02	0.1	0.597	0.62
	WLAN5.6G	802.11ac VHT80	Bottom of Laptop	0	138	AWAN	Ant 1	98.30	1.02	10.50	10.46	1.01	-0.11	0.667	0.69
	WLAN5.6G	802.11ac VHT80	Bottom of Laptop	0	138	AWAN	Ant 0+1	98.70	1.01	13.50	13.46	1.01	-0.11	0.629	0.64
	WLAN5.6G	802.11ac VHT80	Rear Face	0	138	AWAN	Ant 0	98.60	1.01	10.00	9.97	1.01	-0.09	0.695	0.71
	WLAN5.6G	802.11ac VHT80	Left Side	0	138	AWAN	Ant 0	98.60	1.01	10.00	9.97	1.01	0	<0.001	0.00
	WLAN5.6G	802.11ac VHT80	Right Side	0	138	AWAN	Ant 0	98.60	1.01	10.00	9.97	1.01	0	<0.001	0.00
	WLAN5.6G	802.11ac VHT80	Top Side	0	138	AWAN	Ant 0	98.60	1.01	10.00	9.97	1.01	0	<0.001	0.00
	WLAN5.6G	802.11ac VHT80	Bottom Side	0	138	AWAN	Ant 0	98.60	1.01	10.00	9.97	1.01	-0.19	0.583	0.59
	WLAN5.6G	802.11ac VHT80	Rear Face	0	138	AWAN	Ant 1	98.30	1.02	10.00	9.97	1.01	0.04	0.705	0.73
	WLAN5.6G	802.11ac VHT80	Left Side	0	138	AWAN	Ant 1	98.30	1.02	10.00	9.97	1.01	0	<0.001	0.00
	WLAN5.6G	802.11ac VHT80	Right Side	0	138	AWAN	Ant 1	98.30	1.02	10.00	9.97	1.01	0	<0.001	0.00
	WLAN5.6G	802.11ac VHT80	Top Side	0	138	AWAN	Ant 1	98.30	1.02	10.00	9.97	1.01	0	<0.001	0.00
	WLAN5.6G	802.11ac VHT80	Bottom Side	0	138	AWAN	Ant 1	98.30	1.02	10.00	9.97	1.01	0.12	0.627	0.65
3	WLAN5.6G	802.11ac VHT80	Rear Face	0	138	AWAN	Ant 0+1	98.70	1.01	13.00	12.94	1.01	-0.05	0.736	0.75
	WLAN5.6G	802.11ac VHT80	Left Side	0	138	AWAN	Ant 0+1	98.70	1.01	13.00	12.94	1.01	0	<0.001	0.00
	WLAN5.6G	802.11ac VHT80	Right Side	0	138	AWAN	Ant 0+1	98.70	1.01	13.00	12.94	1.01	0	<0.001	0.00
	WLAN5.6G	802.11ac VHT80	Top Side	0	138	AWAN	Ant 0+1	98.70	1.01	13.00	12.94	1.01	0	<0.001	0.00
	WLAN5.6G	802.11ac VHT80	Bottom Side	0	138	AWAN	Ant 0+1	98.70	1.01	13.00	12.94	1.01	-0.14	0.706	0.72
	WLAN5.6G	802.11ac VHT80	Rear Face	0	106	AWAN	Ant 0+1	98.70	1.01	13.00	12.93	1.02	-0.09	0.56	0.58
	WLAN5.6G	802.11ac VHT80	Rear Face	0	122	AWAN	Ant 0+1	98.70	1.01	13.00	12.90	1.02	-0.19	0.724	0.75
	WLAN5.6G	802.11ac VHT80	Rear Face	0	138	INPAQ	Ant 0+1	98.70	1.01	13.00	12.94	1.01	0.14	0.717	0.73



Body SAR Test Result

System & Position						DUT Configuration		SAR							
Plot No.	Band	Mode	Test Position	Separation Distance (mm)	Channel	Sample	Ant Status	Duty Cycle	Crest Factor	Max. Tune-up Power (dBm)	Measured Conducted Power (dBm)	Scaling Factor	Power Drift (dB)	Measured SAR-1g (W/kg)	Scaled SAR-1g (W/kg)
	WLAN5.8G	802.11ac VHT80	Bottom of Laptop	0	155	AWAN	Ant 0	98.60	1.01	10.50	10.43	1.02	-0.05	0.633	0.65
	WLAN5.8G	802.11ac VHT80	Bottom of Laptop	0	155	AWAN	Ant 1	98.30	1.02	10.50	10.42	1.02	0.03	0.691	0.72
	WLAN5.8G	802.11ac VHT80	Bottom of Laptop	0	155	AWAN	Ant 0+1	98.70	1.01	13.50	13.45	1.01	-0.19	0.644	0.66
	WLAN5.8G	802.11ac VHT80	Rear Face	0	155	AWAN	Ant 0	98.60	1.01	10.00	9.82	1.04	-0.1	0.714	0.75
	WLAN5.8G	802.11ac VHT80	Left Side	0	155	AWAN	Ant 0	98.60	1.01	10.00	9.82	1.04	0	<0.001	0.00
	WLAN5.8G	802.11ac VHT80	Right Side	0	155	AWAN	Ant 0	98.60	1.01	10.00	9.82	1.04	0	<0.001	0.00
	WLAN5.8G	802.11ac VHT80	Top Side	0	155	AWAN	Ant 0	98.60	1.01	10.00	9.82	1.04	0	<0.001	0.00
	WLAN5.8G	802.11ac VHT80	Bottom Side	0	155	AWAN	Ant 0	98.60	1.01	10.00	9.82	1.04	-0.16	0.627	0.66
	WLAN5.8G	802.11ac VHT80	Rear Face	0	155	AWAN	Ant 1	98.30	1.02	10.00	9.96	1.01	-0.01	0.737	0.76
	WLAN5.8G	802.11ac VHT80	Left Side	0	155	AWAN	Ant 1	98.30	1.02	10.00	9.96	1.01	0	<0.001	0.00
	WLAN5.8G	802.11ac VHT80	Right Side	0	155	AWAN	Ant 1	98.30	1.02	10.00	9.96	1.01	0	<0.001	0.00
	WLAN5.8G	802.11ac VHT80	Top Side	0	155	AWAN	Ant 1	98.30	1.02	10.00	9.96	1.01	0	<0.001	0.00
	WLAN5.8G	802.11ac VHT80	Bottom Side	0	155	AWAN	Ant 1	98.30	1.02	10.00	9.96	1.01	0.06	0.446	0.46
4	WLAN5.8G	802.11ac VHT80	Rear Face	0	155	AWAN	Ant 0+1	98.70	1.01	13.00	12.96	1.01	-0.02	0.782	0.80
	WLAN5.8G	802.11ac VHT80	Left Side	0	155	AWAN	Ant 0+1	98.70	1.01	13.00	12.96	1.01	0	<0.001	0.00
	WLAN5.8G	802.11ac VHT80	Right Side	0	155	AWAN	Ant 0+1	98.70	1.01	13.00	12.96	1.01	0	<0.001	0.00
	WLAN5.8G	802.11ac VHT80	Top Side	0	155	AWAN	Ant 0+1	98.70	1.01	13.00	12.96	1.01	0	<0.001	0.00
	WLAN5.8G	802.11ac VHT80	Bottom Side	0	155	AWAN	Ant 0+1	98.70	1.01	13.00	12.96	1.01	-0.09	0.625	0.64
	WLAN5.8G	802.11ac VHT80	Rear Face	0	155	INPAQ	Ant 0+1	98.70	1.01	13.00	12.96	1.01	-0.09	0.77	0.79



Body SAR Test Result

System & Position						DUT Configuration		SAR							
Plot No.	Band	Mode	Test Position	Separation Distance (mm)	Channel	Sample	Ant Status	Duty Cycle	Crest Factor	Max. Tune-up Power (dBm)	Measured Conducted Power (dBm)	Scaling Factor	Power Drift (dB)	Measured SAR-1g (W/kg)	Scaled SAR-1g (W/kg)
	WLAN5.9G	802.11ac VHT160	Bottom of Laptop	0	163	AWAN	Ant 0	98.51	1.02	10.50	10.43	1.02	0.02	0.8	0.83
	WLAN5.9G	802.11ac VHT160	Bottom of Laptop	0	163	AWAN	Ant 1	98.75	1.01	10.50	10.46	1.01	0.13	0.727	0.74
	WLAN5.9G	802.11ac VHT160	Bottom of Laptop	0	163	AWAN	Ant 0+1	98.39	1.02	13.50	13.48	1.00	-0.01	0.663	0.68
5	WLAN5.9G	802.11ac VHT160	Rear Face	0	163	AWAN	Ant 0	98.51	1.02	10.00	9.88	1.03	0.07	1.06	1.11
	WLAN5.9G	802.11ac VHT160	Left Side	0	163	AWAN	Ant 0	98.51	1.02	10.00	9.88	1.03	0	<0.001	0.00
	WLAN5.9G	802.11ac VHT160	Right Side	0	163	AWAN	Ant 0	98.51	1.02	10.00	9.88	1.03	0	<0.001	0.00
	WLAN5.9G	802.11ac VHT160	Top Side	0	163	AWAN	Ant 0	98.51	1.02	10.00	9.88	1.03	0	<0.001	0.00
	WLAN5.9G	802.11ac VHT160	Bottom Side	0	163	AWAN	Ant 0	98.51	1.02	10.00	9.88	1.03	0.06	0.978	1.03
	WLAN5.9G	802.11ac VHT160	Rear Face	0	163	AWAN	Ant 1	98.75	1.01	10.00	9.89	1.03	-0.01	0.929	0.97
	WLAN5.9G	802.11ac VHT160	Left Side	0	163	AWAN	Ant 1	98.75	1.01	10.00	9.89	1.03	0	<0.001	0.00
	WLAN5.9G	802.11ac VHT160	Right Side	0	163	AWAN	Ant 1	98.75	1.01	10.00	9.89	1.03	0	<0.001	0.00
	WLAN5.9G	802.11ac VHT160	Top Side	0	163	AWAN	Ant 1	98.75	1.01	10.00	9.89	1.03	0	<0.001	0.00
	WLAN5.9G	802.11ac VHT160	Bottom Side	0	163	AWAN	Ant 1	98.75	1.01	10.00	9.89	1.03	0.14	0.742	0.77
	WLAN5.9G	802.11ac VHT160	Rear Face	0	163	AWAN	Ant 0+1	98.39	1.02	13.00	12.90	1.02	-0.03	0.971	1.01
	WLAN5.9G	802.11ac VHT160	Left Side	0	163	AWAN	Ant 0+1	98.39	1.02	13.00	12.90	1.02	0	<0.001	0.00
	WLAN5.9G	802.11ac VHT160	Right Side	0	163	AWAN	Ant 0+1	98.39	1.02	13.00	12.90	1.02	0	<0.001	0.00
	WLAN5.9G	802.11ac VHT160	Top Side	0	163	AWAN	Ant 0+1	98.39	1.02	13.00	12.90	1.02	0	<0.001	0.00
	WLAN5.9G	802.11ac VHT160	Bottom Side	0	163	AWAN	Ant 0+1	98.39	1.02	13.00	12.90	1.02	0.08	0.913	0.95
	WLAN5.9G	802.11ac VHT160	Rear Face	0	163	INPAQ	Ant 0	98.51	1.02	10.00	9.88	1.03	-0.07	1.05	1.10
	WLAN5.9G	802.11ac VHT160	Rear Face	0	163	AWAN	Ant 0	98.51	1.02	10.00	9.88	1.03	-0.11	1.01	1.06
	BT	BDR	Bottom of Laptop	0	78	AWAN	Ant 1	77.07	1.30	10.00	9.91	1.02	0.02	0.069	0.09
	BT	BDR	Rear Face	0	78	AWAN	Ant 1	77.07	1.30	10.00	9.91	1.02	0.04	0.106	0.14
	BT	BDR	Left Side	0	78	AWAN	Ant 1	77.07	1.30	10.00	9.91	1.02	0	<0.001	0.00
	BT	BDR	Right Side	0	78	AWAN	Ant 1	77.07	1.30	10.00	9.91	1.02	0	<0.001	0.00
	BT	BDR	Top Side	0	78	AWAN	Ant 1	77.07	1.30	10.00	9.91	1.02	0	<0.001	0.00
	BT	BDR	Bottom Side	0	78	AWAN	Ant 1	77.07	1.30	10.00	9.91	1.02	0.06	0.075	0.10
6	BT	BDR	Rear Face	0	0	AWAN	Ant 1	77.07	1.30	10.00	9.51	1.12	-0.02	0.272	0.40
	BT	BDR	Rear Face	0	39	AWAN	Ant 1	77.07	1.30	10.00	9.65	1.08	-0.16	0.19	0.27
	BT	BDR	Rear Face	0	0	INPAQ	Ant 1	77.07	1.30	10.00	9.51	1.12	0.14	0.25	0.36



Body SAR Test Result

System & Position						DUT Configuration		SAR							
Plot No.	Band	Mode	Test Position	Separation Distance (mm)	Channel	Sample	Ant Status	Duty Cycle	Crest Factor	Max. Tune-up Power (dBm)	Measured Conducted Power (dBm)	Scaling Factor	Power Drift (dB)	Measured SAR-1g (W/kg)	Scaled SAR-1g (W/kg)
7	NFC	ASK	Bottom of Laptop	0	13.56	AWAN		-	1.00	-	-	1	0	<0.001	0.00
	NFC	ASK	Rear Face	0	13.56	AWAN		-	1.00	-	-	1	0	<0.001	0.00
	NFC	ASK	Left Side	0	13.56	AWAN		-	1.00	-	-	1	0	<0.001	0.00
	NFC	ASK	Right Side	0	13.56	AWAN		-	1.00	-	-	1	0	<0.001	0.00
	NFC	ASK	Top Side	0	13.56	AWAN		-	1.00	-	-	1	0	<0.001	0.00
	NFC	ASK	Bottom Side	0	13.56	AWAN		-	1.00	-	-	1	0	<0.001	0.00
	NFC	ASK	Bottom of Laptop	0	13.56	INPAQ		-	1.00	-	-	1	0	<0.001	0.00



SAR and Power Density Test Result

System & Position						DUT Configuration		SAR										Power Density									
Plot No.	Band	Mode	Test Position	Separation Distance (mm)	Channel	Sample	Ant Status	Duty Cycle	Crest Factor	Max. Tune-up Power (dBm)	Measured Conducted Power (dBm)	Scaling Factor	Power Drift (dB)	Measured SAR-1g (W/kg)	Scaled SAR-1g (W/kg)	Measured APD W/m ² (4cm ²)	Scaled APD W/m ² (4cm ²)	Grid Step [λ]	iPD [W/m2]	Scaling Factor for Measurement Uncertainty	Averaging Area [cm2]	Power Drift [dB]	Normal psPD [W/m2]	Scaled Normal psPD [W/m2]	Total psPD [W/m2]	Scaled Total psPD [W/m2]	
	UNII-5	802.11ax HE160	Bottom of Laptop	0	79	AWAN	Ant 0	97.40	1.03	11.00	10.99	1.00	0.03	0.804	0.83	5.42	5.58	0.0529	28.87	1.545	4.00	0.08	2.66	4.23	4.25	6.76	
	UNII-5	802.11ax HE160	Bottom of Laptop	0	79	AWAN	Ant 1	97.40	1.03	11.00	10.99	1.00	0.08	0.551	0.57	3.14	3.23										
	UNII-5	802.11ax HE160	Bottom of Laptop	0	79	AWAN	Ant 0+1	97.80	1.02	14.00	13.96	1.01	-0.04	0.974	1.00	4.8	4.94	0.0529	38.17	1.545	4.00	0.1	3.52	5.55	5.52	8.79	
	UNII-5	802.11ax HE160	Rear Face	0	79	AWAN	Ant 0	97.40	1.03	8.00	7.99	1.00	-0.1	0.318	0.33	2.14	2.2										
	UNII-5	802.11ax HE160	Left Side	0	79	AWAN	Ant 0	97.40	1.03	8.00	7.99	1.00	0	<0.001	0.00	<0.001	0.00										
	UNII-5	802.11ax HE160	Right Side	0	79	AWAN	Ant 0	97.40	1.03	8.00	7.99	1.00	0	<0.001	0.00	<0.001	0.00										
	UNII-5	802.11ax HE160	Top Side	0	79	AWAN	Ant 0	97.40	1.03	8.00	7.99	1.00	0	<0.001	0.00	<0.001	0.00										
	UNII-5	802.11ax HE160	Bottom Side	0	79	AWAN	Ant 0	97.40	1.03	8.00	7.99	1.00	0.08	0.45	0.46	3.03	3.12										
	UNII-5	802.11ax HE160	Rear Face	0	79	AWAN	Ant 1	97.40	1.03	8.00	7.99	1.00	0.11	0.473	0.49	2.69	2.77										
	UNII-5	802.11ax HE160	Left Side	0	79	AWAN	Ant 1	97.40	1.03	8.00	7.99	1.00	0	<0.001	0.00	<0.001	0.00										
	UNII-5	802.11ax HE160	Right Side	0	79	AWAN	Ant 1	97.40	1.03	8.00	7.99	1.00	0	<0.001	0.00	<0.001	0.00										
	UNII-5	802.11ax HE160	Top Side	0	79	AWAN	Ant 1	97.40	1.03	8.00	7.99	1.00	0	<0.001	0.00	<0.001	0.00										
	UNII-5	802.11ax HE160	Bottom Side	0	79	AWAN	Ant 1	97.40	1.03	8.00	7.99	1.00	0.15	0.339	0.35	1.93	1.99										
	UNII-5	802.11ax HE160	Rear Face	0	79	AWAN	Ant 0+1	97.80	1.02	11.00	10.99	1.00	0.08	0.547	0.56	2.7	2.75										
	UNII-5	802.11ax HE160	Left Side	0	79	AWAN	Ant 0+1	97.80	1.02	11.00	10.99	1.00	0	<0.001	0.00	<0.001	0.00										
	UNII-5	802.11ax HE160	Right Side	0	79	AWAN	Ant 0+1	97.80	1.02	11.00	10.99	1.00	0	<0.001	0.00	<0.001	0.00										
	UNII-5	802.11ax HE160	Top Side	0	79	AWAN	Ant 0+1	97.80	1.02	11.00	10.99	1.00	0	<0.001	0.00	<0.001	0.00										
	UNII-5	802.11ax HE160	Bottom Side	0	79	AWAN	Ant 0+1	97.80	1.02	11.00	10.99	1.00	0.18	0.647	0.66	3.19	3.25										
8	UNII-5	802.11ax HE160	Bottom of Laptop	0	15	AWAN	Ant 0	97.40	1.03	11.00	10.89	1.03	-0.02	1.14	1.21	7.69	8.16	0.0502	40.90	1.545	4.00	-0.05	3.78	6.02	5.71	9.36	
	UNII-5	802.11ax HE160	Bottom of Laptop	0	47	AWAN	Ant 0	97.40	1.03	11.00	10.93	1.02	0.08	0.934	0.98	6.3	6.62	0.0515	33.52	1.545	4.00	0.12	3.09	4.92	4.94	8.02	
	UNII-6	802.11ax HE160	Bottom of Laptop	0	111	AWAN	Ant 0	97.40	1.03	11.00	10.94	1.01	0.17	0.745	0.78	5.02	5.22										
	UNII-7	802.11ax HE160	Bottom of Laptop	0	143	AWAN	Ant 0	97.40	1.03	11.00	10.96	1.01	-0.08	0.59	0.61	3.98	4.14										
	UNII-7	802.11ax HE160	Bottom of Laptop	0	175	AWAN	Ant 0	97.40	1.03	11.00	10.94	1.01	0.11	0.599	0.62	4.04	4.2										
	UNII-8	802.11ax HE160	Bottom of Laptop	0	207	AWAN	Ant 0	97.40	1.03	11.00	10.97	1.01	-0.03	0.553	0.58	3.73	3.88										
	UNII-5	802.11ax HE160	Bottom of Laptop	0	15	AWAN	Ant 0+1	97.80	1.02	14.00	13.94	1.01	-0.06	0.798	0.82	3.93	4.05										
	UNII-5	802.11ax HE160	Bottom of Laptop	0	47	AWAN	Ant 0+1	97.80	1.02	14.00	13.91	1.02	-0.14	0.687	0.71	3.38	3.52										
	UNII-6	802.11ax HE160	Bottom of Laptop	0	111	AWAN	Ant 0+1	97.80	1.02	14.00	13.94	1.01	0.04	0.636	0.66	3.13	3.22										
	UNII-7	802.11ax HE160	Bottom of Laptop	0	143	AWAN	Ant 0+1	97.80	1.02	14.00	13.95	1.01	0.17	0.503	0.52	2.48	2.55										
	UNII-7	802.11ax HE160	Bottom of Laptop	0	175	AWAN	Ant 0+1	97.80	1.02	14.00	13.93	1.02	0.05	0.511	0.53	2.52	2.62										
	UNII-8	802.11ax HE160	Bottom of Laptop	0	207	AWAN	Ant 0+1	97.80	1.02	14.00	13.95	1.01	-0.19	0.472	0.49	2.32	2.39										
	UNII-5	802.11ax HE160	Bottom of Laptop	0	15	INPAQ	Ant 0	97.40	1.03	11.00	10.89	1.03	-0.04	1.07	1.14	7.23	7.67	0.0502	38.49	1.545	4.00	-0.17	3.55	5.65	5.57	9.13	
	UNII-5	802.11ax HE160	Bottom of Laptop	0	15	AWAN	Ant 0	97.40	1.03	11.00	10.89	1.03	-0.13	1.09	1.16	7.32	7.77										

Appendix H. Analysis of Simultaneous Transmission.

The analysis of simultaneous transmission SAR are shown as below.

<Possibilities of Simultaneous Transmission>

The simultaneous transmission possibilities for this device are listed as below.

Simultaneous TX Combination	Capable Transmit Configurations	Body Exposure Condition
A	WLAN 2.4G_Ant0 + BT Ant1	Yes
B	WLAN 5G_Ant0 + BT Ant1	Yes
C	WLAN 5G_Ant0+1 + BT Ant1	Yes
D	WLAN 6G_Ant0 + BT Ant1	Yes
E	WLAN 6G_Ant0+1 + BT Ant1	Yes

Notes

1. The WLAN 2.4G and WLAN 5G and WLAN 6G cannot transmit simultaneously.

Simultaneous Transmission SAR Evaluation (Body)											
Position	1	2	3	4	5	6	A(1+6)	B(2+6)	C(3+6)	D(4+6)	E(5+6)
	WLAN 2.4GHz Ant 0	Max WLAN 5GHz Ant 0	Max WLAN 5GHz Ant 0+1	Max WLAN 6GHz Ant 0	Max WLAN 6GHz Ant 0+1	Max BT Ant 1	Summimg result 1g SAR W/kg	Summimg result 1g SAR W/kg	Summimg result 1g SAR W/kg	Summimg result 1g SAR W/kg	Summimg result 1g SAR W/kg
	1g SAR W/kg	1g SAR W/kg	1g SAR W/kg	1g SAR W/kg	1g SAR W/kg	1g SAR W/kg					
Bottom of Laptop	0.47	0.83	0.83	1.21	1.00	0.09	0.56	0.92	0.92	1.30	1.09
Rear Face	0.51	1.11	1.01	0.33	0.56	0.40	0.91	1.51	1.41	0.73	0.96
Left Side	0.00	0.00	0.00	0.00	0.00	0.00	0.00	0.00	0.00	0.00	0.00
Right Side	0.00	0.00	0.00	0.00	0.00	0.00	0.00	0.00	0.00	0.00	0.00
Top Side	0.00	0.00	0.00	0.00	0.00	0.00	0.00	0.00	0.00	0.00	0.00
Bottom Side	0.25	1.03	0.95	0.46	0.66	0.10	0.35	1.13	1.05	0.56	0.76

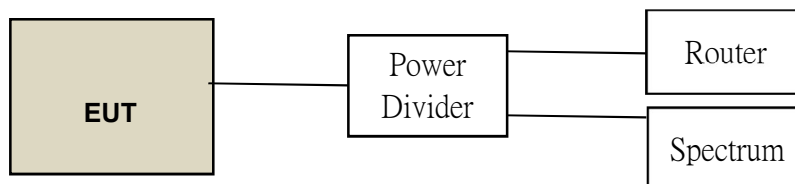
Total Exposure Ratio (Body)											
Position	1	2	3	4	5	6	A(1+6)	B(2+6)	C(3+6)	D(4+6)	E(5+6)
	WLAN 2.4GHz Ant 0	Max WLAN 5GHz Ant 0	Max WLAN 5GHz Ant 0+1	Max WLAN 6GHz Ant 0	Max WLAN 6GHz Ant 0+1	Max BT Ant 1	Total Exposure Ratio	Total Exposure Ratio	Total Exposure Ratio	Total Exposure Ratio	Total Exposure Ratio
	1g SAR W/kg	1g SAR W/kg	1g SAR W/kg	4cm ² W/m ²	4cm ² W/m ²	1g SAR W/kg					
Bottom of Laptop	0.47	0.83	0.83	9.36	8.79	0.09	0.35	0.58	0.58	0.99	0.94
Rear Face	0.51	1.11	1.01	0.00	0.00	0.40	0.57	0.94	0.88	0.25	0.25
Left Side	0.00	0.00	0.00	0.00	0.00	0.00	0.00	0.00	0.00	0.00	0.00
Right Side	0.00	0.00	0.00	0.00	0.00	0.00	0.00	0.00	0.00	0.00	0.00
Top Side	0.00	0.00	0.00	0.00	0.00	0.00	0.00	0.00	0.00	0.00	0.00
Bottom Side	0.25	1.03	0.95	0.00	0.00	0.10	0.22	0.71	0.66	0.06	0.06

Appendix L. Verifying the Mechanism Operation of Gravity-sensor

The power verified by LCD angle changed are shown as below.

Note:
1. WLAN2.4G、WLAN5G & WLAN6G had supported G-sensor and the selection of G-Sensor experimental verification is based on the test result of worst SAR value(UNII-5_802.11ax HE160_Bottom of Laptop_Ch.15_Ant 0).

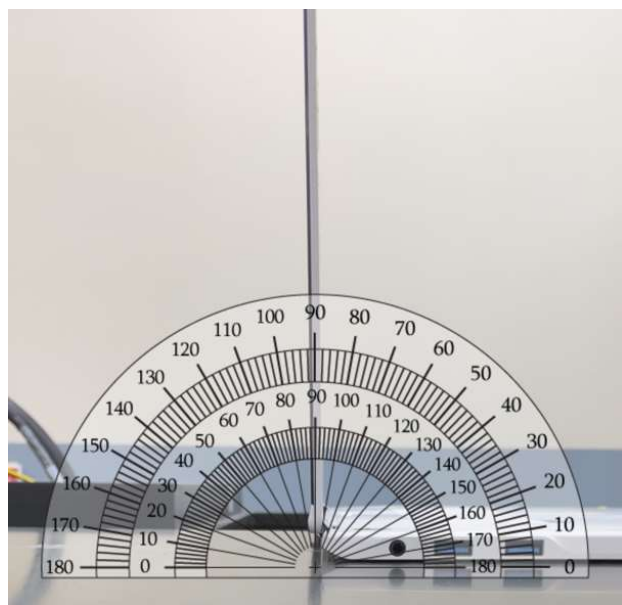
a. Connection Diagram of EUT and Peripheral Devices



b. Configuration of EUT and Peripheral Devices

Asset Name	/	Asset no.	/	Manufacturer	/	Model
Router	/	H3-010069	/	Netgear	/	RAX40 AX3000 Router
Power Divider	/	E2-010554	/	MVE	/	MVE8546
Spectrum Analyzer	/	E2-020105	/	Gilent	/	E4445A

c. Get laptop mode angle (270)





Hall Effect and Gravity-Sensor Test Record

1.Hall Effect and Gravity-Sensor

Orientation 1	<A> From close mode 0 degrees, open the screen in 10 degree step until laptop mode is obtained.																													
Laptop mode	Degree	0	30	60	90	120	150	180	210	240	250	260	270	280	290	350	360			
	Power	12.46		12.45		12.42		12.42		12.38		12.43		12.51		12.48		12.64		12.51	12.41	9.24	9.35	12.48			12.41	12.39		
Range of trigger angle	 Move back by 5 degree, until close mode is reobtained.																													
270	Degree	255	260	265	270	275	280	285	290	295	300	305	355	360															
	Power	12.51	12.41	12.39	9.37	9.48	9.31	9.47	12.31	12.24	12.45	12.34			12.39	12.45														
	<C> Open the screen in 1 degree steps until laptop mode is reobtained and continue opening the screen in 1 degree steps at l																													
	Degree	265	266	267	268	269	270	271	272	273	274	275	287	288	289	290	291	292											
	Power	12.41	12.52	12.37	12.41	12.47	9.39	9.37	9.17	9.27	9.17	9.33		9.48	9.41	9.38	12.38	12.41	12.37											
	<D> Then continue opening the screen in 10 degree steps until tablet mode is obtained.																													
	Degree	289	299	310	320	330	340	350	360																					
	Power	9.37	12.41	12.39	12.31	12.38	12.41	12.22	12.3																					
Orientation 2	<A> From close mode 0 degrees, open the screen in 10 degree step until laptop mode is obtained.																													
Tablet mode	Degree	360	350	340	330	320	310	300	290	280	270	260	250	210	180	150	120	90	60	30	0	
	Power	12.42	12.45	12.37	12.38	12.41	12.38	12.18	9.32	9.28	9.17	12.49	12.51		12.51		12.39		12.27		12.28		12.34		12.35		12.29		12.34	
Range of trigger angle	 Move back by 5 degree, until close mode is reobtained.																													
270	Degree	300	295	290	285	280	275	270	265	260																				
	Power	12.39	12.24	9.27	9.11	9.42	9.27	9.08	12.38	12.47																				
	<C> Open the screen in 1 degree steps until laptop mode is reobtained and continue opening the screen in 1 degree steps at l																													
	Degree	295	294	293	292	291	290	275	274	273	272	271	270	269	268														
	Power	12.44	12.39	12.24	12.14	12.35	9.24		9.37	9.31	9.42	9.17	9.26	9.21	12.24	12.39														
	<D> Then continue opening the screen in 10 degree steps until tablet mode is obtained.																													
	Degree	270	280	290	300	310																								
	Power	9.24	12.17	12.29	12.35	12.29																								