

EUT Internal Photos

Figure 9
General Appearance (Turn Up The Screen)



Figure 10
Internal View (Remove The Cover)

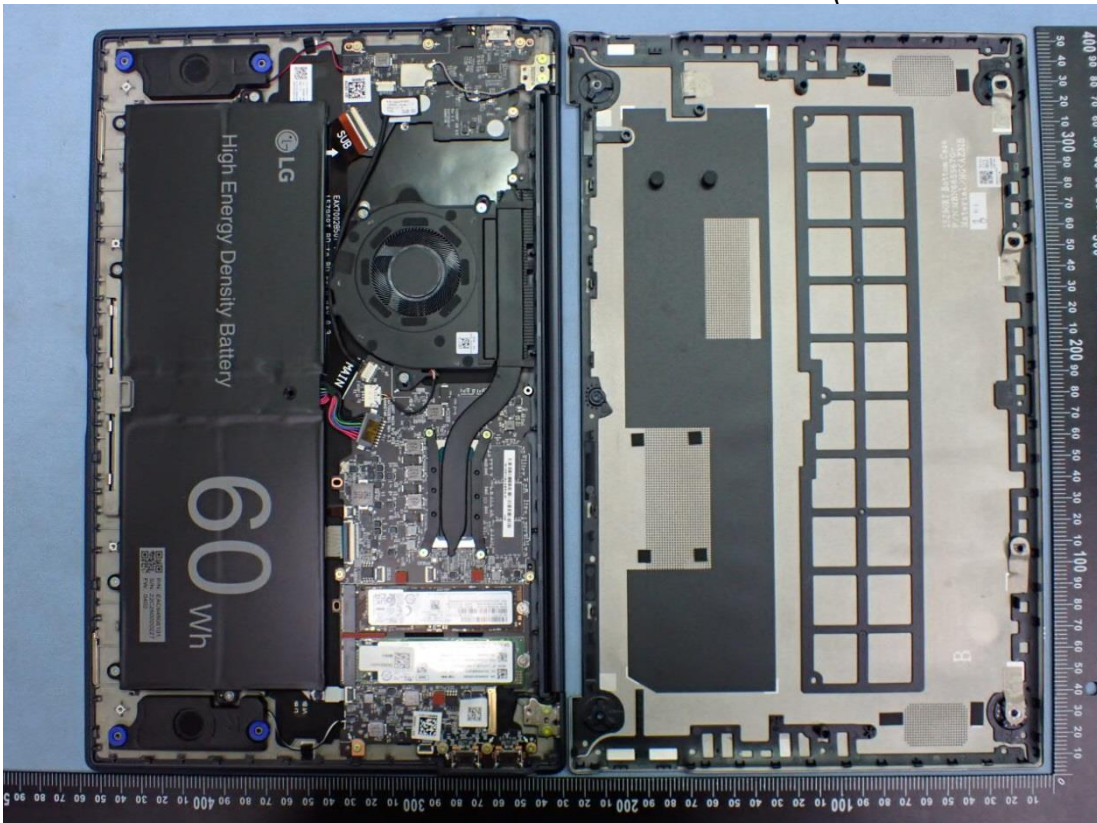


Figure 11
Internal View

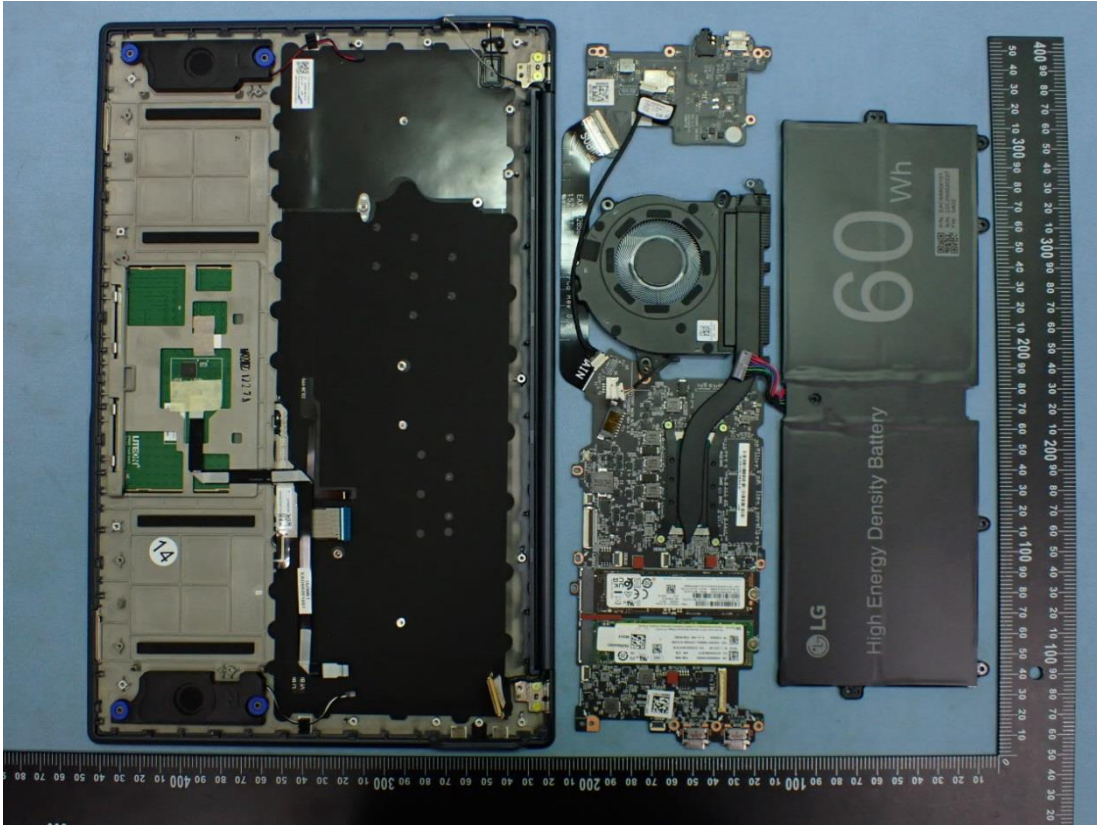
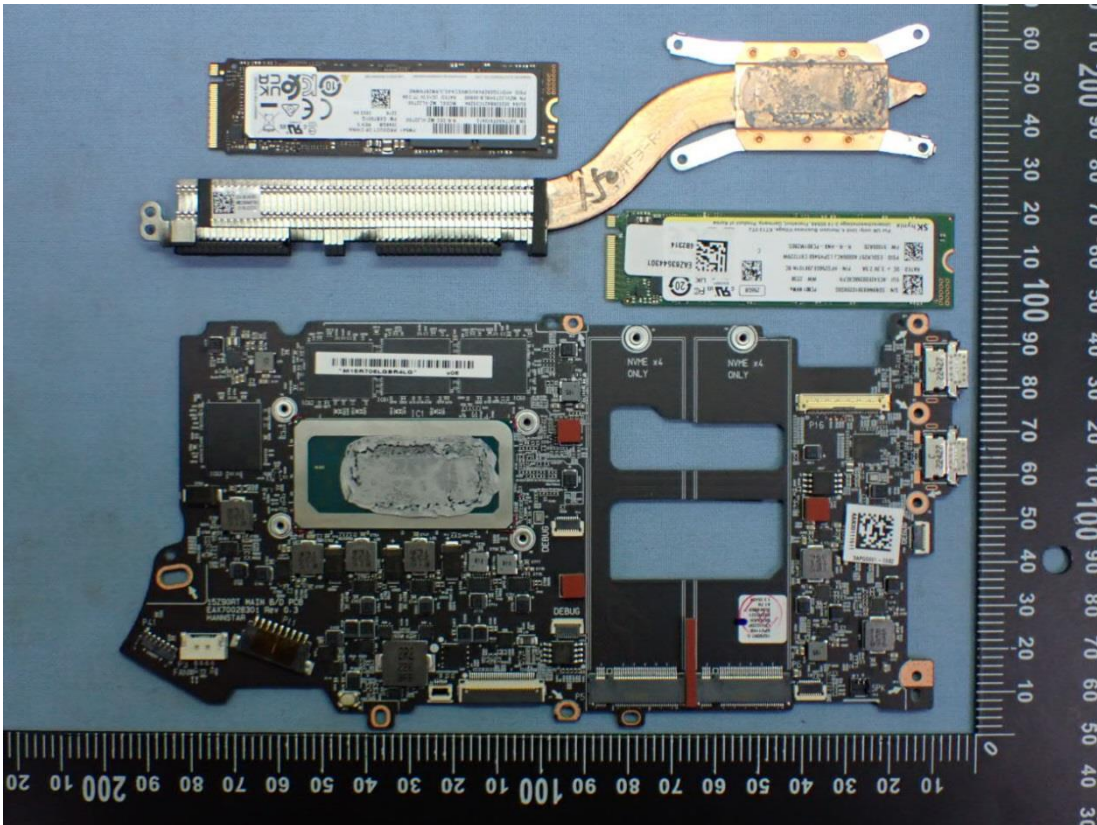


Figure 12
Internal View



*Figure 13
LCD Panel (Front View)*



*Figure 14
LCD Panel (Back View)*



Figure 15
LCD Panel (Label View)



Figure 16
Battery (Front View)



Figure 17
Battery (Back View)

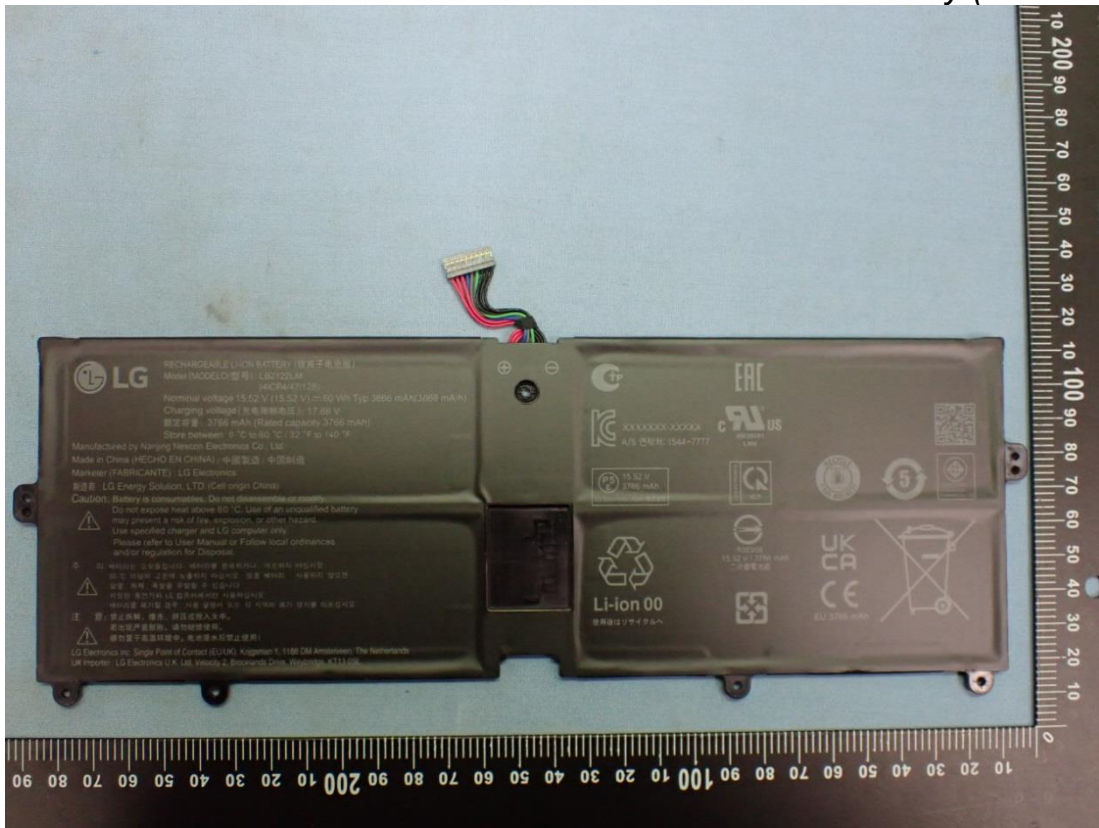


Figure 18
Battery (Label View)



Figure 19
SSD (2TB) (Front View)



Figure 20
SSD (2TB) (Back View)

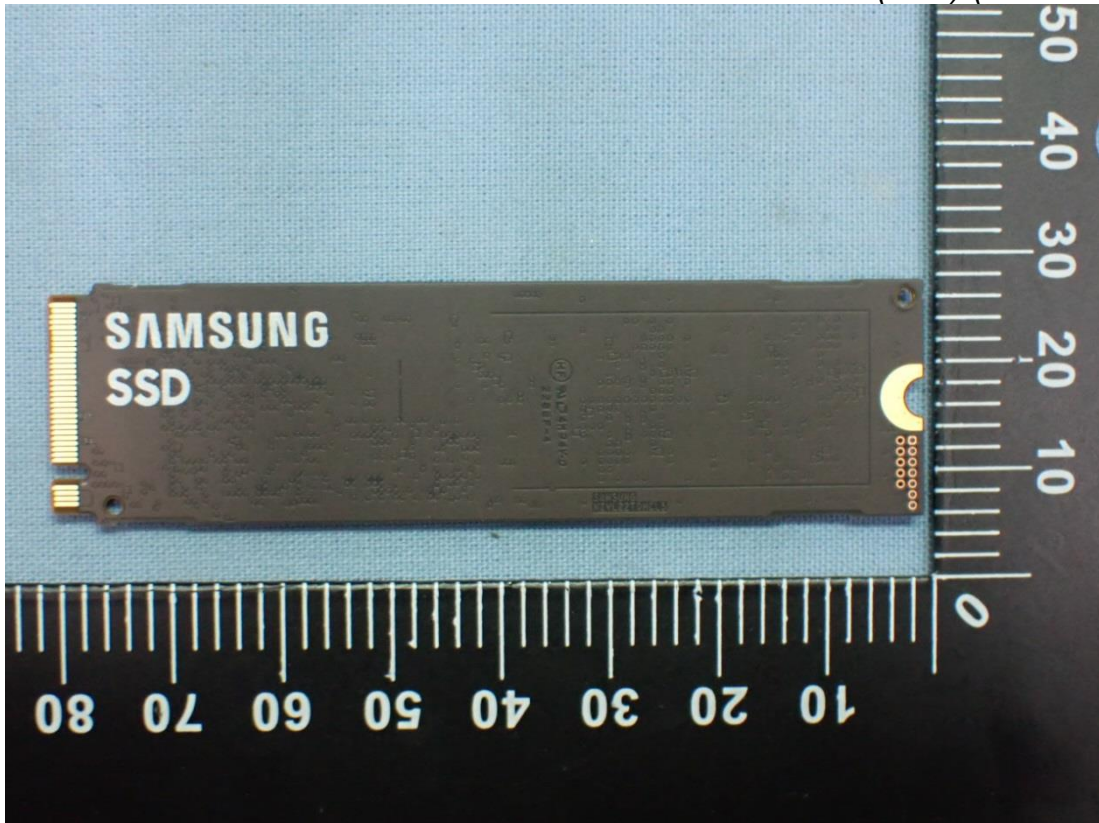


Figure 21
SSD (256GB) (Front View)

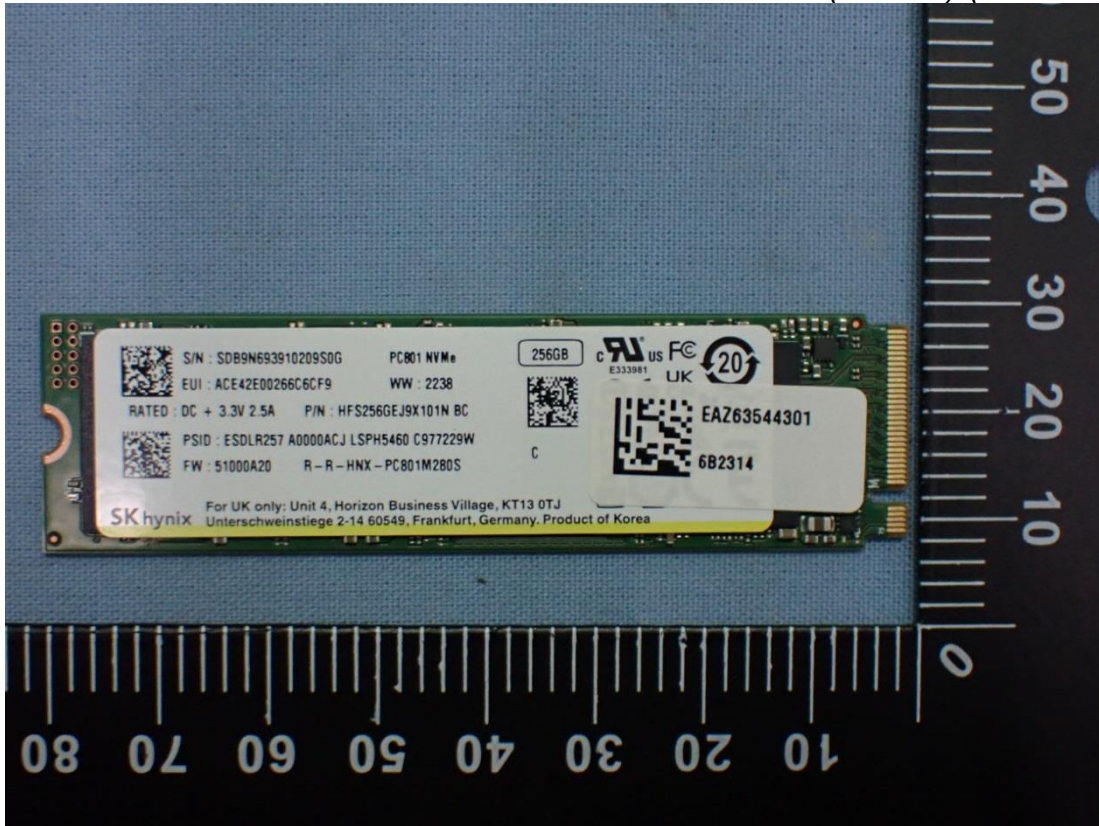


Figure 22
SSD (256GB) (Back View)

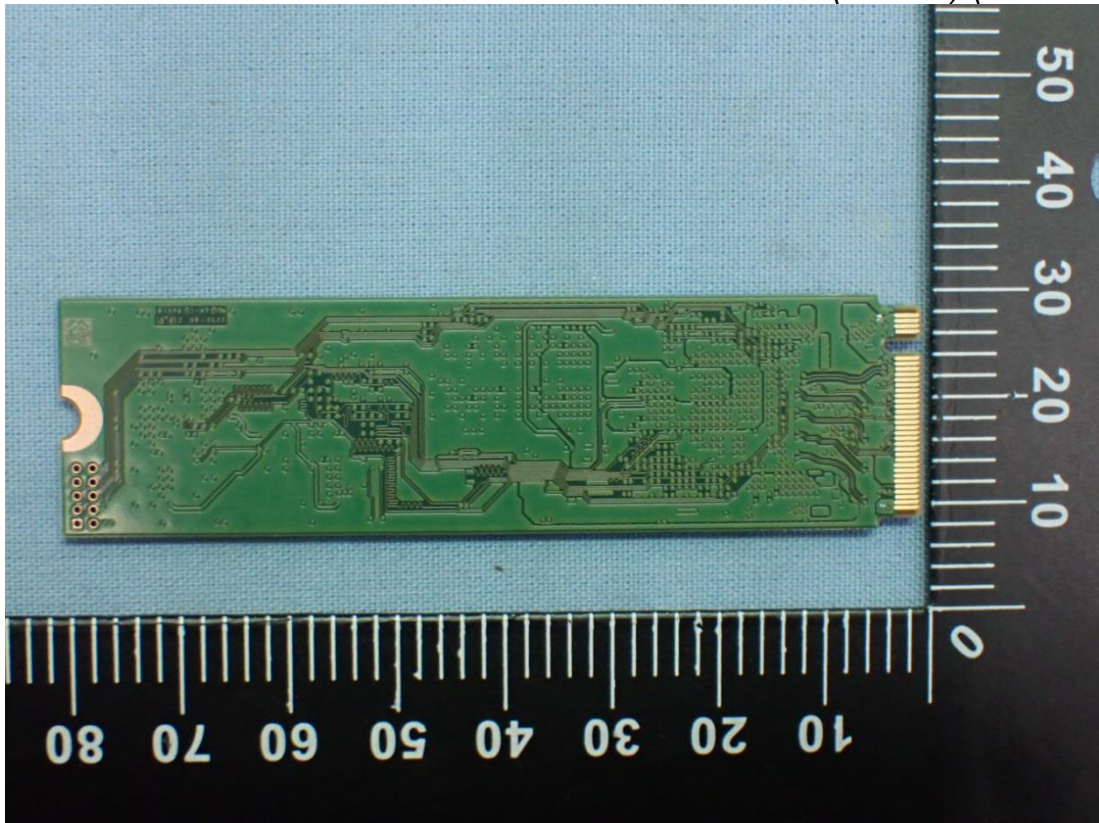


Figure 23
WLAN SUB Board (Front View)

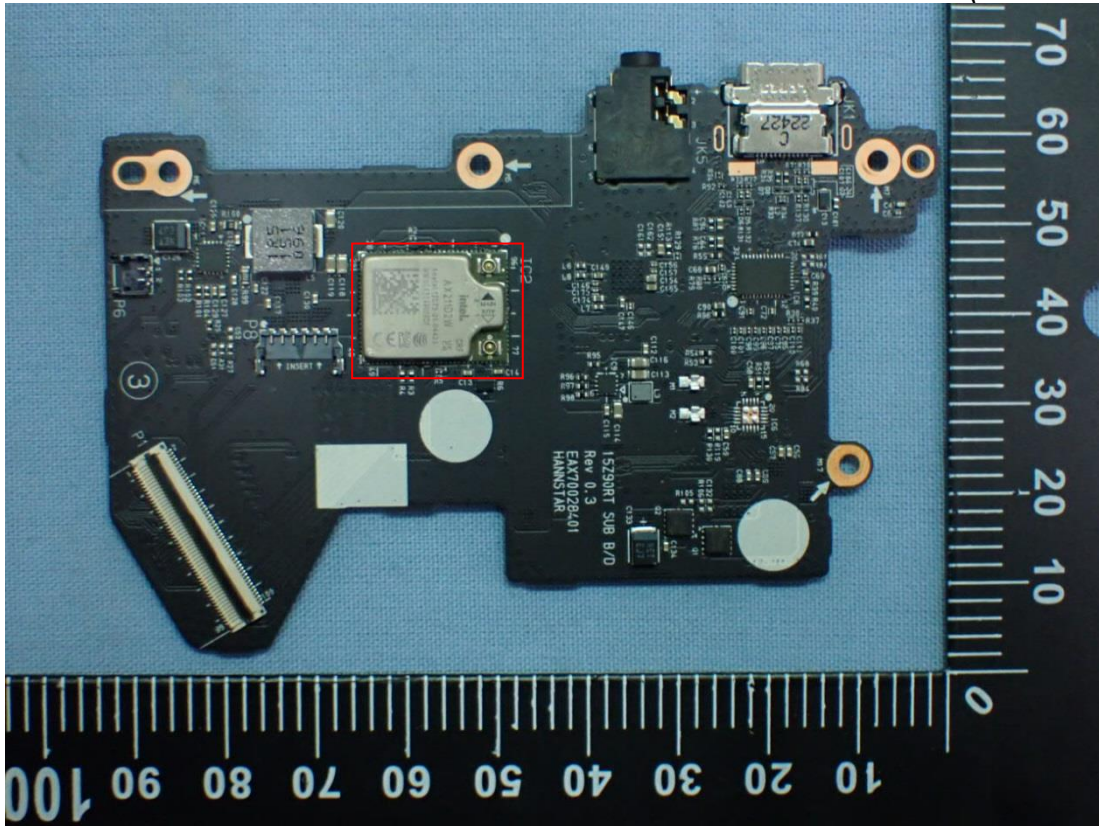


Figure 24
WLAN SUB Board (Back View)

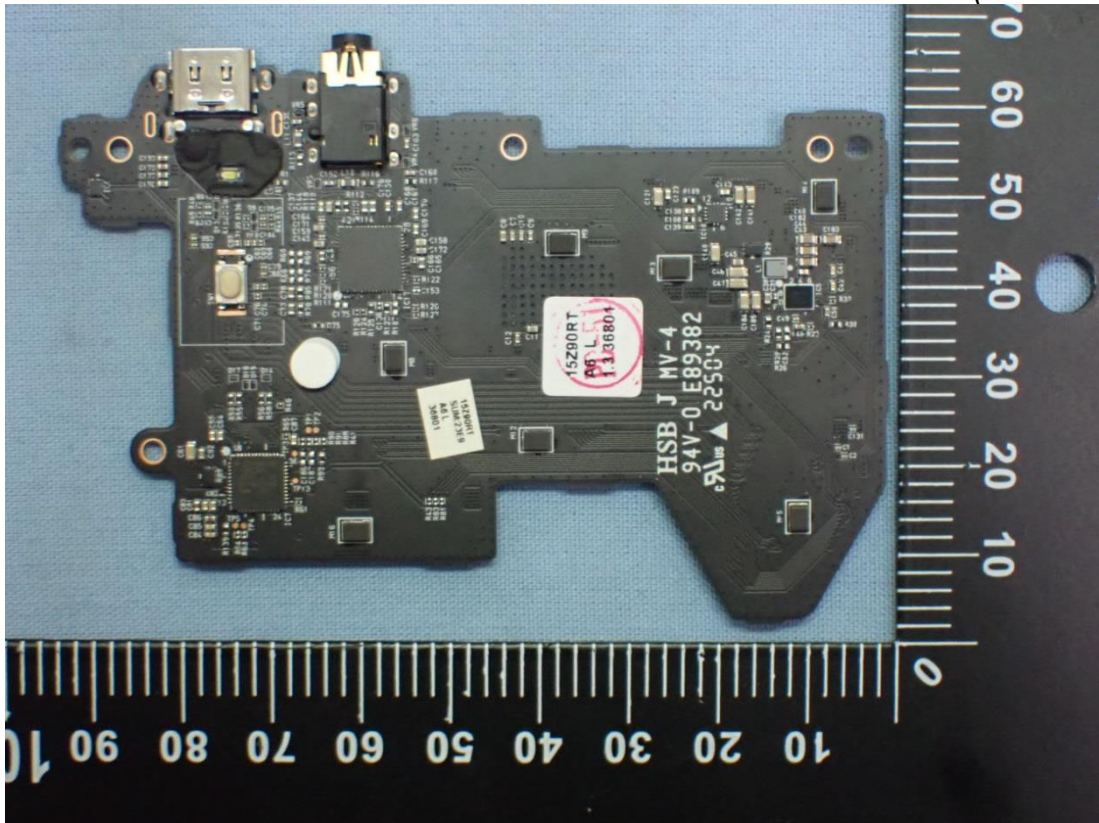


Figure 25
WLAN Combo Card Front View



Figure 26
WLAN Combo Card, Without Shield and (Back View)

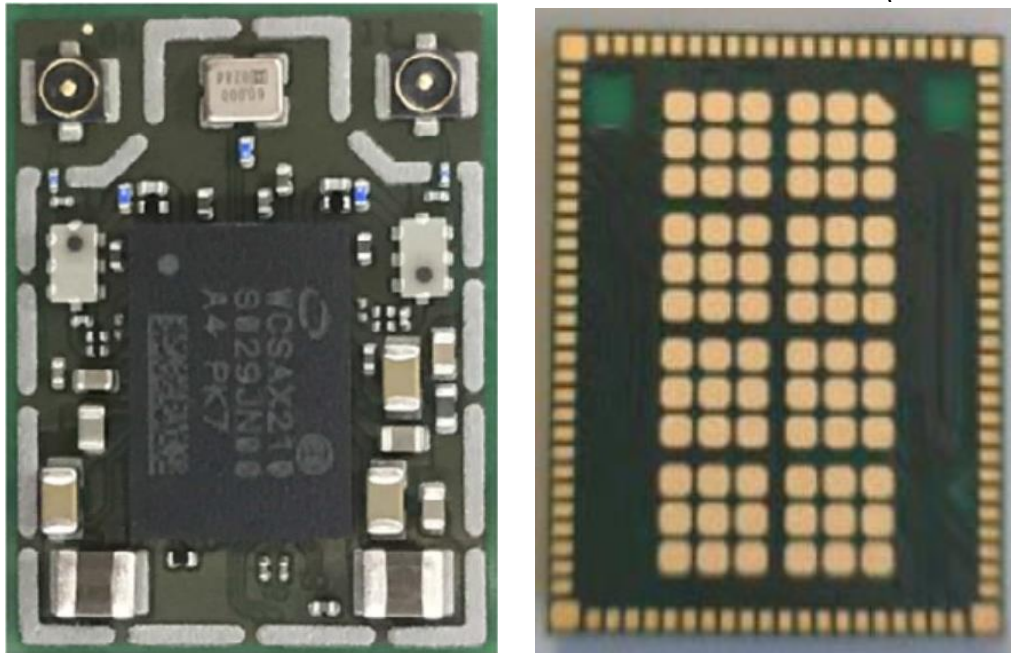


Figure 27
Main Board (Front View)

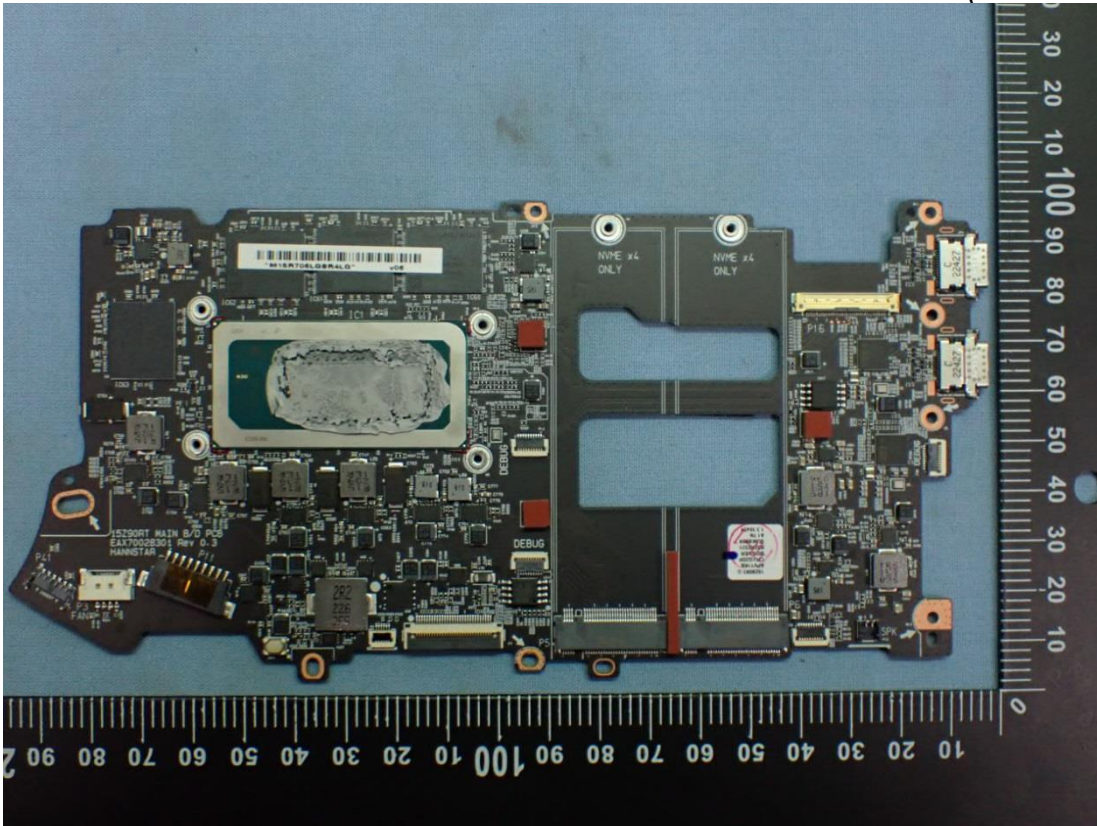


Figure 28
Main Board (Back View)

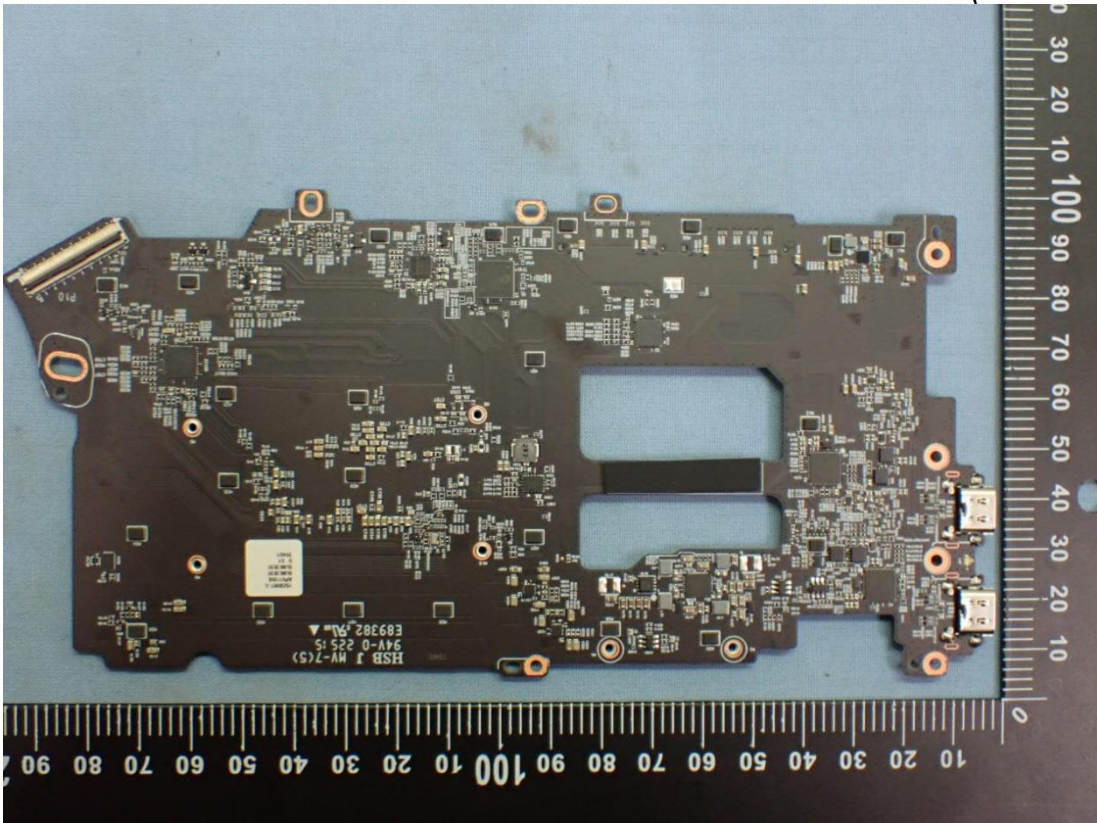


Figure 29
Antenna Location



Figure 30
WLAN Combo Antenna (Main Black / AUX Gray)

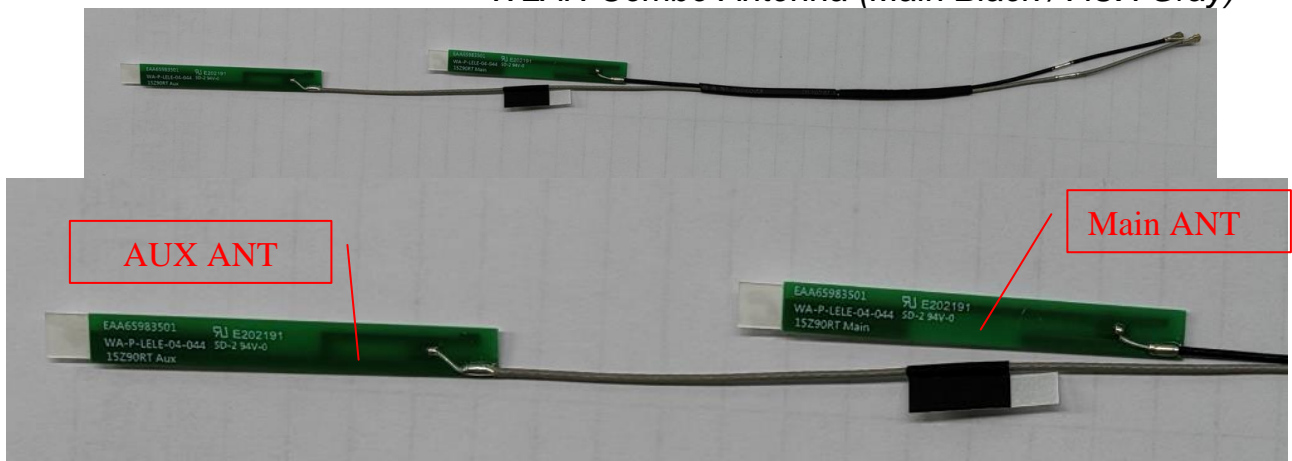


Figure 31
AC Adapter (Front View)



Figure 32
AC Adapter (Back View)



Figure 33
AC Adapter (Label View)

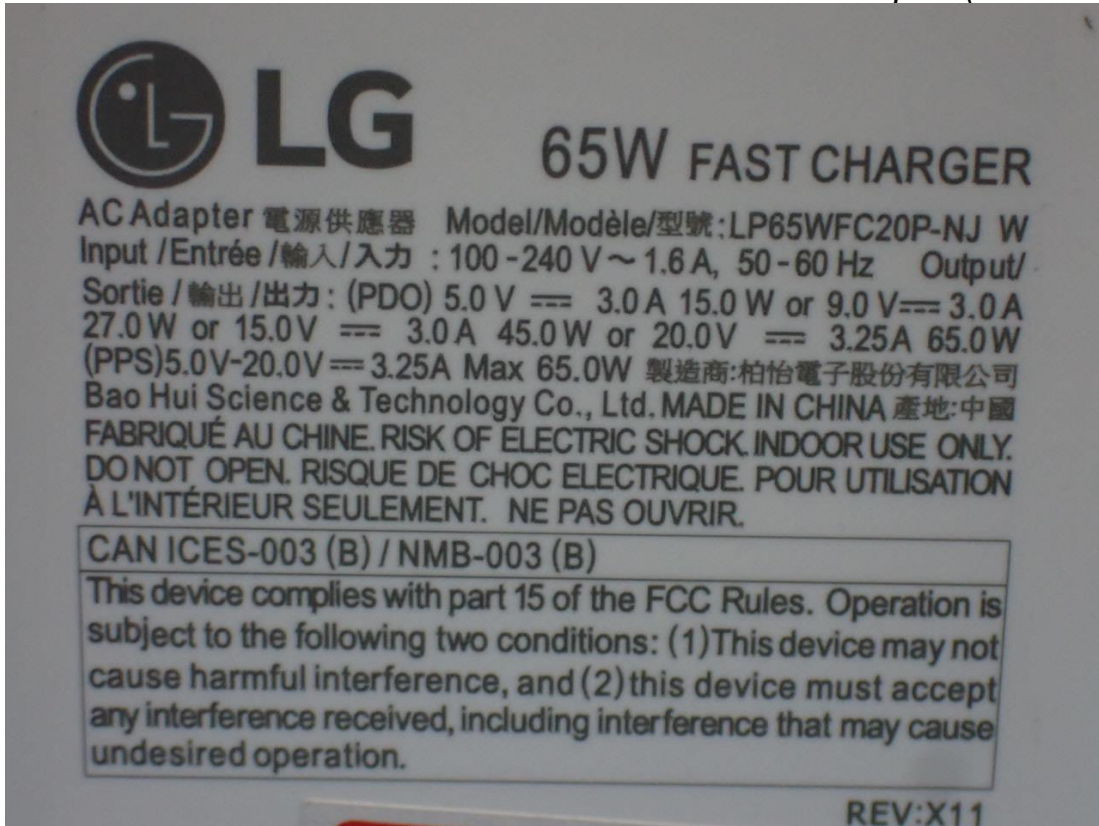


Figure 34
Type C Cable

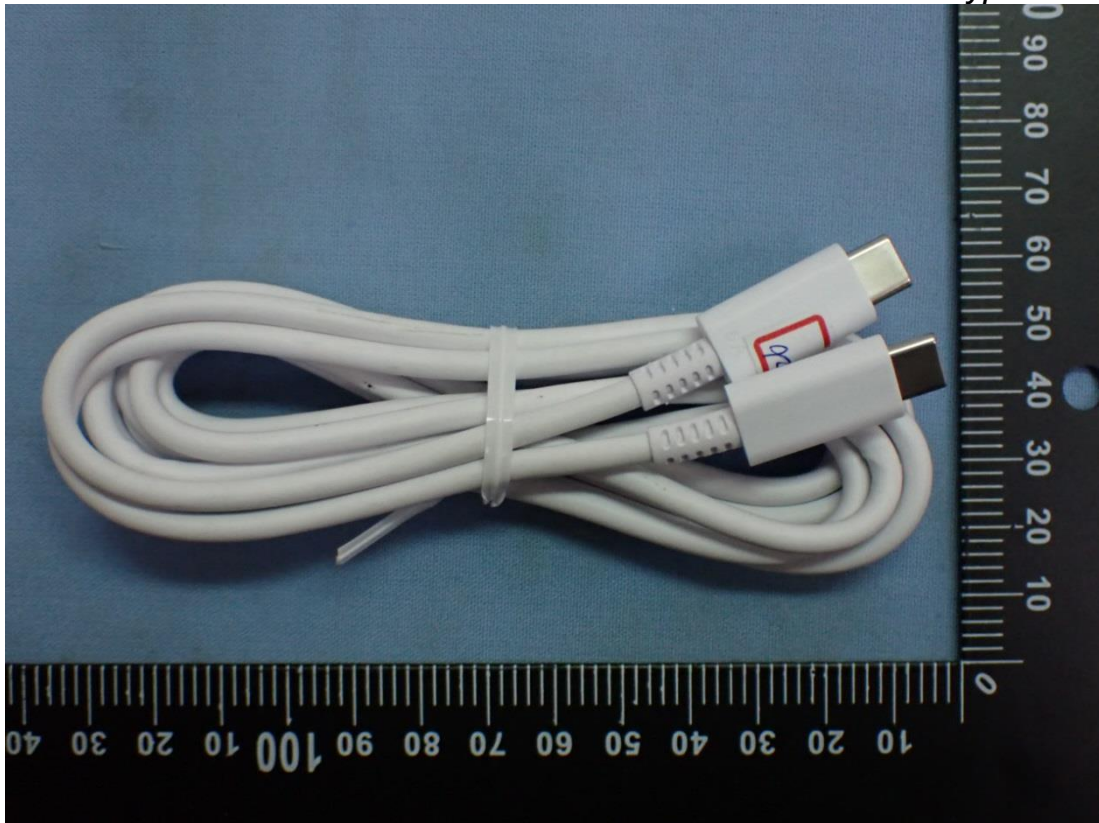


Figure 35
100 Megabit Ethernet, LAN Gender (White) (Front View)

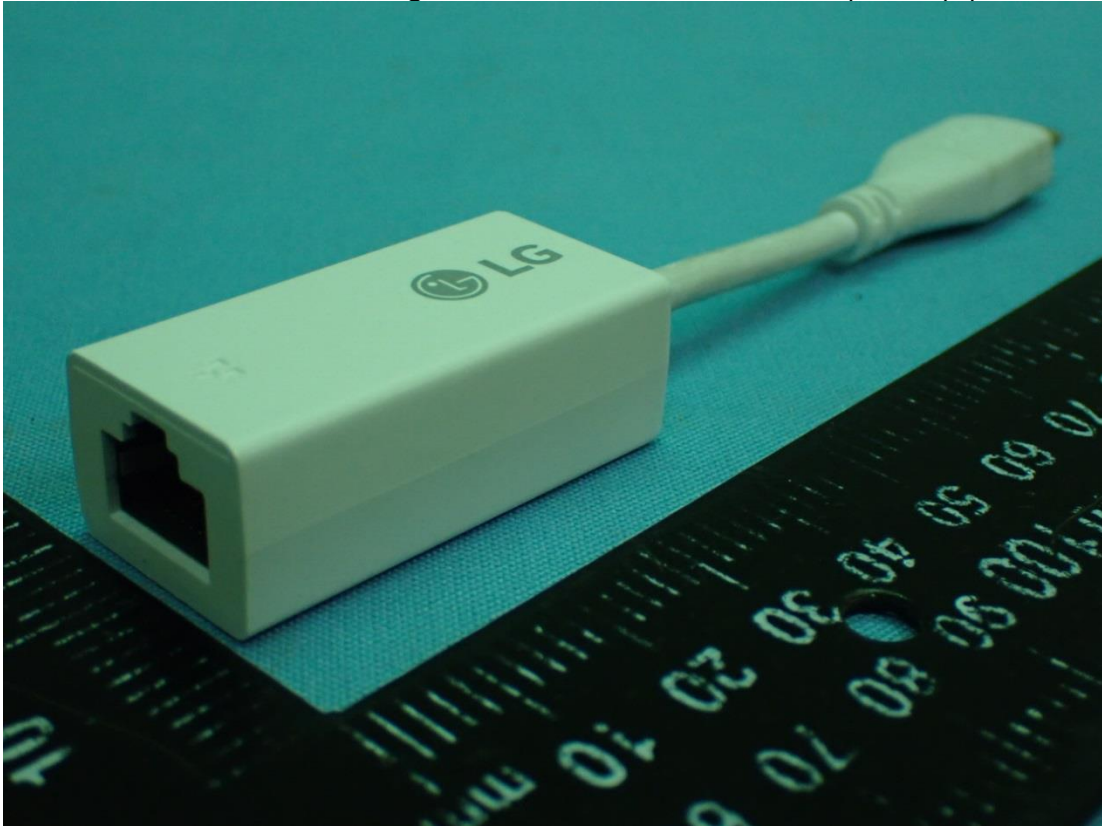


Figure 36
100 Megabit Ethernet, LAN Gender (White) (Back View)

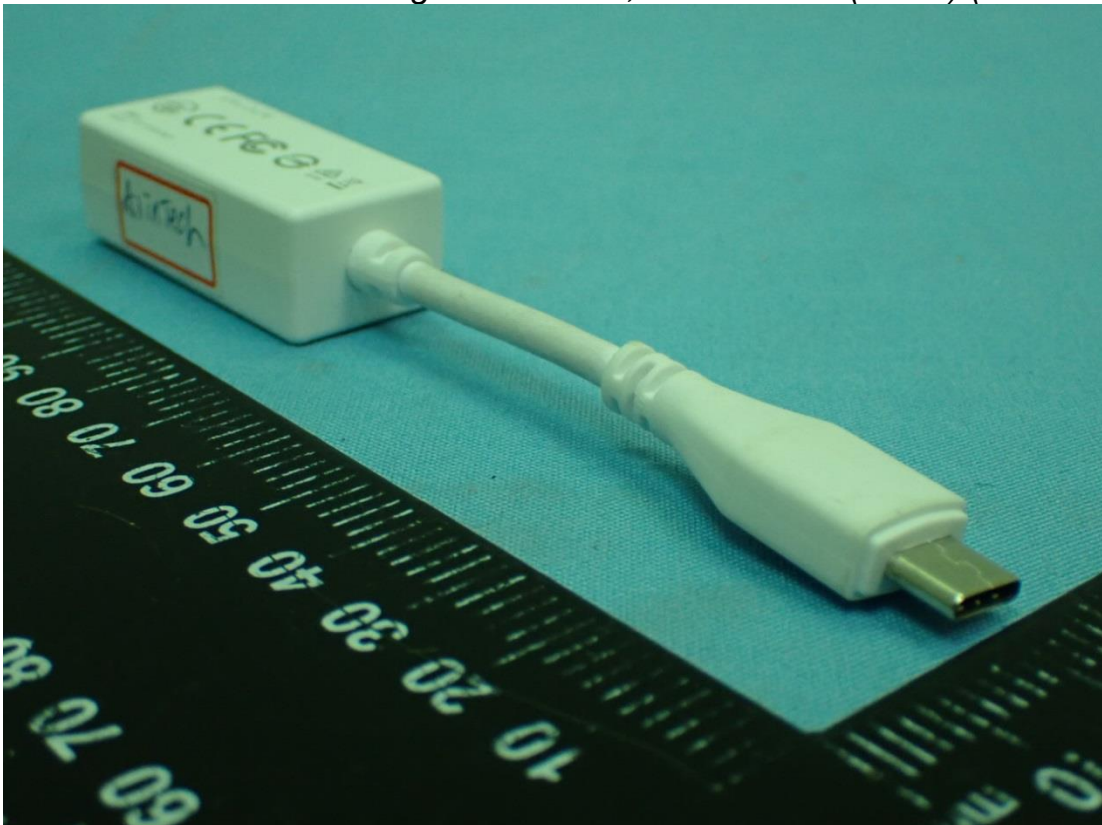


Figure 37
100 Megabit Ethernet, LAN Gender(Black) (Front View)

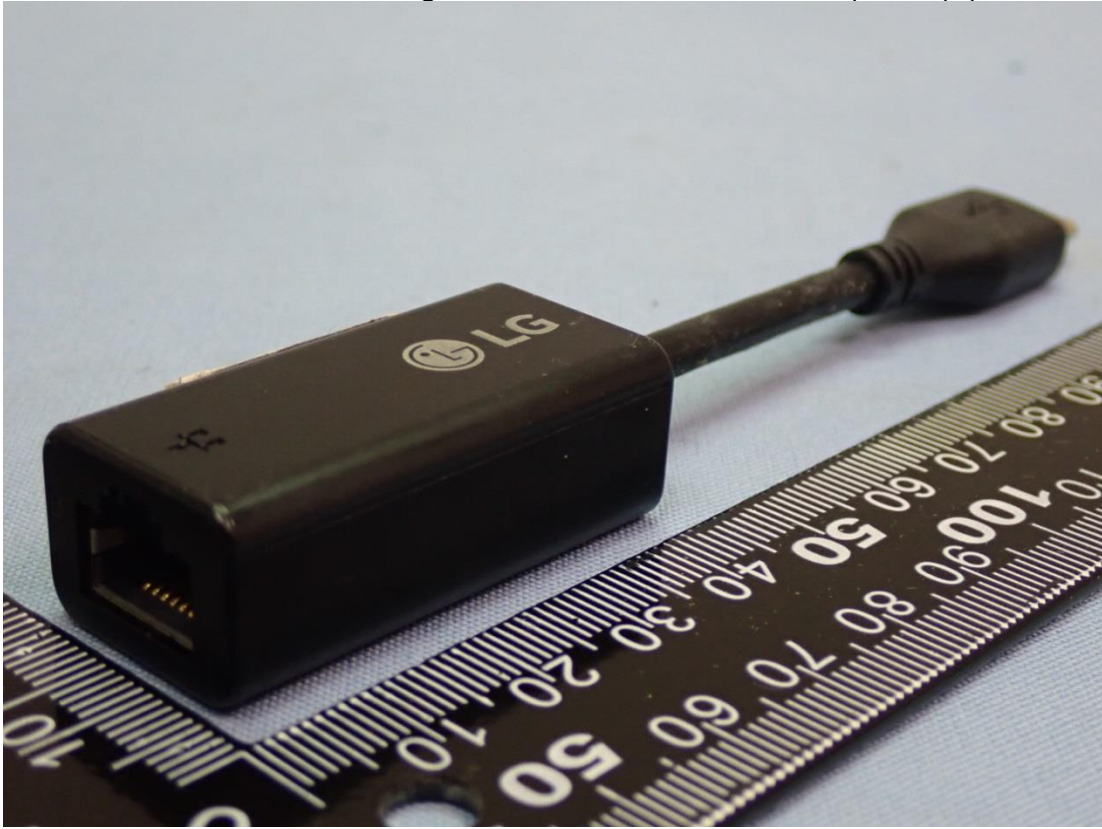


Figure 38
100 Megabit Ethernet, LAN Gender (Black) (Back View)

