

● SAR Test Result

Test SKU: SKU #1 (with INPAQ Antenna)

Antenna Chain 0 (AUX), Test Position: Screen

Measurement Report for Device, SCREEN, U-NII-5, UID 10755 AAC, Channel 79 (6345.0MHz)

Device under Test Properties

Model, Manufacturer	Dimensions [mm]	IMEI	DUT Type
15Z90Q(INPAQ)	355.0 x 230.0 x 6.0		Laptop

Exposure Conditions

Phantom Section, TSL	Position, Test Distance [mm]	Band	Group, UID	Frequency [MHz], Channel Number	Conversion Factor	TSL Conductivity [S/m]	TSL Permittivity
Flat, HSL	FRONT, 5.00	U-NII-5	WLAN, 10755-AAC	6345.0, 79	5.55	5.77	34.5

Hardware Setup

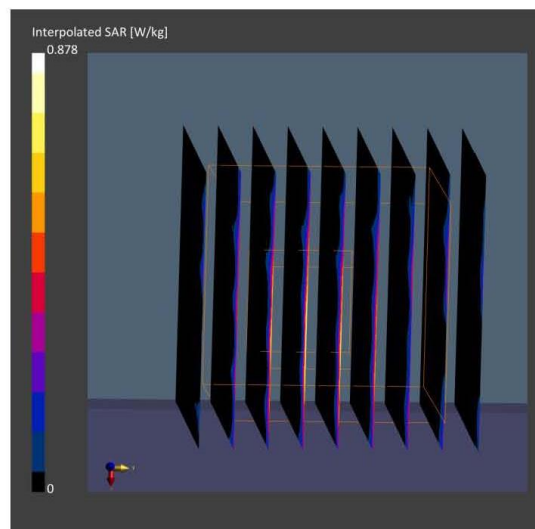
Phantom	TSL, Measured Date	Probe, Calibration Date	DAE, Calibration Date
ELI V5.0 (20deg probe tilt) - 1170	HBBL-600-10000	EX3DV4 - SN3855, 2021-09-24	DAE4 Sn1337, 2021-09-20

Scan Setup

	Area Scan	Zoom Scan
Grid Extents [mm]	102.0 x 204.0	22.0 x 22.0 x 22.0
Grid Steps [mm]	8.5 x 8.5	3.4 x 3.4 x 1.4
Sensor Surface [mm]	3.0	1.4
Graded Grid	Yes	Yes
Grading Ratio	1.5	1.4
MAIA	Y	Y
Surface Detection	VMS + 6p	VMS + 6p
Scan Method	Measured	Measured

Measurement Results

	Area Scan	Zoom Scan
Date	2022-02-17	2022-02-17
psSAR1g [W/kg]	0.185	0.173
psSAR10g [W/kg]	0.054	0.055
Power Drift [dB]	0.99	-0.47
Power Scaling	Disabled	Disabled
Scaling Factor [dB]		
TSL Correction	No correction	No correction
M2/M1 [%]		57.2
Dist 3dB Peak [mm]		6.5



Antenna Chain 0 (AUX), Test Position: Bottom

Measurement Report for Device, BOTTOM, U-NII-5, UID 10755 AAC, Channel 79 (6345.0MHz)

Device under Test Properties

Model, Manufacturer	Dimensions [mm]	IMEI	DUT Type
15Z90Q(INPAQ)	355.0 x 230.0 x 6.0		Laptop

Exposure Conditions

Phantom Section, TSL	Position, Test Distance [mm]	Band	Group, UID	Frequency [MHz], Channel Number	Conversion Factor	TSL Conductivity [S/m]	TSL Permittivity
Flat, HSL	FRONT, 5.00	U-NII-5	WLAN, 10755-AAC	6345.0, 79	5.55	5.77	34.5

Hardware Setup

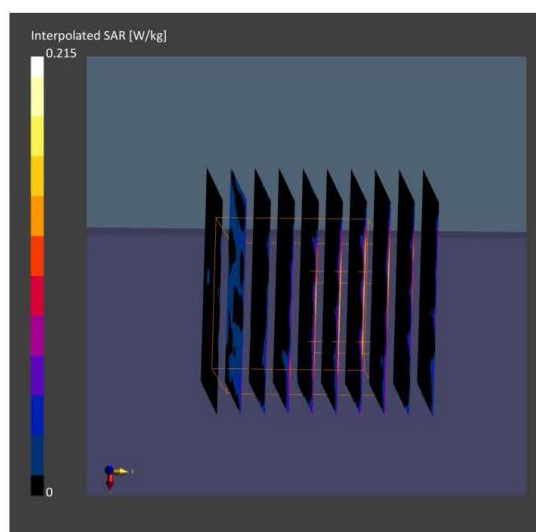
Phantom	TSL, Measured Date	Probe, Calibration Date	DAE, Calibration Date
ELI V5.0 (20deg probe tilt) - 1170	HBBL-600-10000	EX3DV4 - SN3855, 2021-09-24	DAE4 Sn1337, 2021-09-20

Scan Setup

	Area Scan	Zoom Scan
Grid Extents [mm]	102.0 x 204.0	22.0 x 22.0 x 22.0
Grid Steps [mm]	8.5 x 8.5	3.4 x 3.4 x 1.4
Sensor Surface [mm]	3.0	1.4
Graded Grid	Yes	Yes
Grading Ratio	1.5	1.4
MAIA	Y	Y
Surface Detection	VMS + 6p	VMS + 6p
Scan Method	Measured	Measured

Measurement Results

	Area Scan	Zoom Scan
Date	2022-02-17	2022-02-17
psSAR1g [W/kg]	0.054	0.037
psSAR10g [W/kg]	0.014	0.01
Power Drift [dB]	-0.83	-0.49
Power Scaling	Disabled	Disabled
Scaling Factor [dB]		
TSL Correction	No correction	No correction
M2/M1 [%]		65.4
Dist 3dB Peak [mm]		3.4



Test SKU: SKU #2 (with LUXSHARE-ICT Antenna)**Antenna Chain 0 (AUX), Test Position: Screen****Measurement Report for Device, SCREEN, U-NII-5, UID 10755 AAC, Channel 47 (6185.0MHz)****Device under Test Properties**

Model, Manufacturer	Dimensions [mm]	IMEI	DUT Type
Device,	355.0 x 230.0 x 6.0		Laptop

Exposure Conditions

Phantom Section, TSL	Position, Test Distance [mm]	Band	Group, UID	Frequency [MHz], Channel Number	Conversion Factor	TSL Conductivity [S/m]	TSL Permittivity
Flat, HSL	FRONT, 5.00	U-NII-5	WLAN, 10755-AAC	6185.0, 47	5.55	5.77	34.5

Hardware Setup

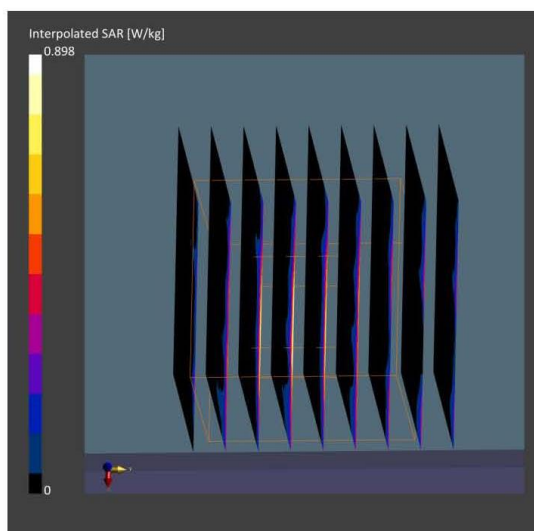
Phantom	TSL, Measured Date	Probe, Calibration Date	DAE, Calibration Date
ELI V5.0 (20deg probe tilt) - 1170	HBBL-600-10000	EX3DV4 - SN3855, 2021-09-24	DAE4 Sn1337, 2021-09-20

Scan Setup

	Area Scan	Zoom Scan
Grid Extents [mm]	102.0 x 204.0	22.0 x 22.0 x 22.0
Grid Steps [mm]	8.5 x 8.5	3.4 x 3.4 x 1.4
Sensor Surface [mm]	3.0	1.4
Graded Grid	Yes	Yes
Grading Ratio	1.5	1.4
MAIA	Y	Y
Surface Detection	VMS + 6p	VMS + 6p
Scan Method	Measured	Measured

Measurement Results

	Area Scan	Zoom Scan
Date	2022-02-23	2022-02-23
psSAR1g [W/kg]	0.178	0.192
psSAR10g [W/kg]	0.054	0.060
Power Drift [dB]	0.03	0.26
Power Scaling	Disabled	Disabled
Scaling Factor [dB]		
TSL Correction	No correction	No correction
M2/M1 [%]		52.8
Dist 3dB Peak [mm]		6.9



Antenna Chain 0 (AUX), Test Position: Bottom

Measurement Report for Device, BOTTOM, U-NII-5, UID 10755 AAC, Channel 47 (6185.0MHz)

Device under Test Properties

Model, Manufacturer	Dimensions [mm]	IMEI	DUT Type
Device,	355.0 x 230.0 x 6.0		Laptop

Exposure Conditions

Phantom Section, TSL	Position, Test Distance [mm]	Band	Group, UID	Frequency [MHz], Channel Number	Conversion Factor	TSL Conductivity [S/m]	TSL Permittivity
Flat, HSL	FRONT, 5.00	U-NII-5	WLAN, 10755-AAC	6185.0, 47	5.55	5.77	34.5

Hardware Setup

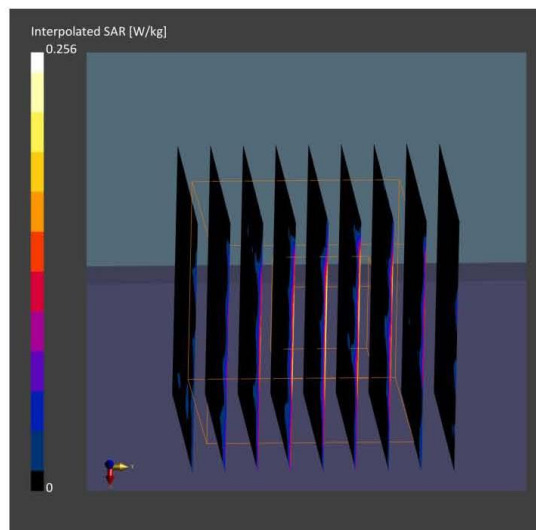
Phantom	TSL, Measured Date	Probe, Calibration Date	DAE, Calibration Date
ELI V5.0 (20deg probe tilt) - 1170	HBBL-600-10000	EX3DV4 - SN3855, 2021-09-24	DAE4 Sn1337, 2021-09-20

Scan Setup

	Area Scan	Zoom Scan
Grid Extents [mm]	102.0 x 204.0	22.0 x 22.0 x 22.0
Grid Steps [mm]	8.5 x 8.5	3.4 x 3.4 x 1.4
Sensor Surface [mm]	3.0	1.4
Graded Grid	Yes	Yes
Grading Ratio	1.5	1.4
MAIA	Y	Y
Surface Detection	VMS + 6p	VMS + 6p
Scan Method	Measured	Measured

Measurement Results

	Area Scan	Zoom Scan
Date	2022-02-23	2022-02-23
psSAR1g [W/kg]	0.060	0.053
psSAR10g [W/kg]	0.015	0.016
Power Drift [dB]	0.57	0.64
Power Scaling	Disabled	Disabled
Scaling Factor [dB]		
TSL Correction	No correction	No correction
M2/M1 [%]		48.0
Dist 3dB Peak [mm]		4.8



● Power Density Test Result

Test SKU: SKU #1 (with INPAQ Antenna) Antenna Chain 0 (AUX)

Measurement Report for 15Z90Q(INPAQ), SCREEN, U-NII-5, UID 10755 AAC, Channel 15 (6025.0MHz)

Device under Test Properties

Model, Manufacturer	Dimensions [mm]	IMEI	DUT Type
, 15Z90Q(INPAQ)	355.0 x 230.0 x 6.0		Laptop

Exposure Conditions

Phantom Section	Position, Test Distance [mm]	Band	Group, UID	Frequency [MHz], Channel Number	Conversion Factor
5G Air	FRONT, 2.00	U-NII-5	WLAN, 10755-AAC	6025.0, 15	1.0

Hardware Setup

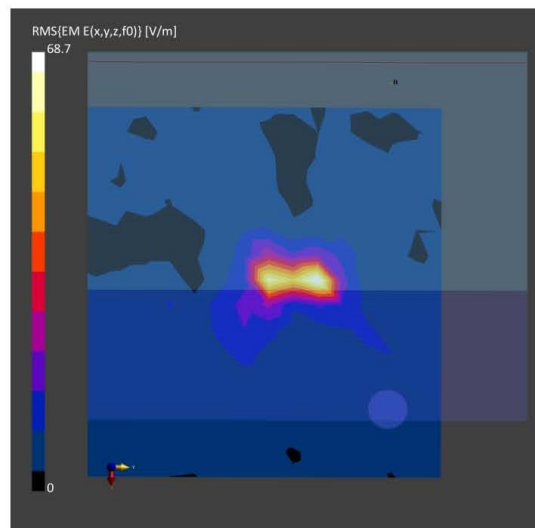
Phantom	Medium	Probe, Calibration Date	DAE, Calibration Date
mmWave- 1059	Air---	EUmmWV4 - SN9544_F1-55GHz, 2021-04-01	DAE3 Sn393, 2021-04-09

Scan Setup

	5G Scan
Grid Extents [mm]	120.0 x 120.0
Grid Steps [lambda]	0.25 x 0.25
Sensor Surface [mm]	2.0
MAIA	N/A

Measurement Results

	5G Scan
Date	2022-02-23
Avg. Area [cm ²]	4.00
psPDn+ [W/m ²]	2.41
psPDtot+ [W/m ²]	3.07
psPDmod+ [W/m ²]	3.53
E _{max} [V/m]	68.7
Power Drift [dB]	0.75



Measurement Report for 15Z90Q(INPAQ), SCREEN,U-NII-5, UID 10755 AAC, Channel 79 (6345.0MHz)**Device under Test Properties**

Model, Manufacturer	Dimensions [mm]	IMEI	DUT Type
, 15Z90Q(INPAQ)	355.0 x 230.0 x 6.0		Laptop

Exposure Conditions

Phantom Section	Position, Test Distance [mm]	Band	Group, UID	Frequency [MHz], Channel Number	Conversion Factor
5G Air	FRONT, 2.00	U-NII-5	WLAN, 10755-AAC	6345.0, 79	1.0

Hardware Setup

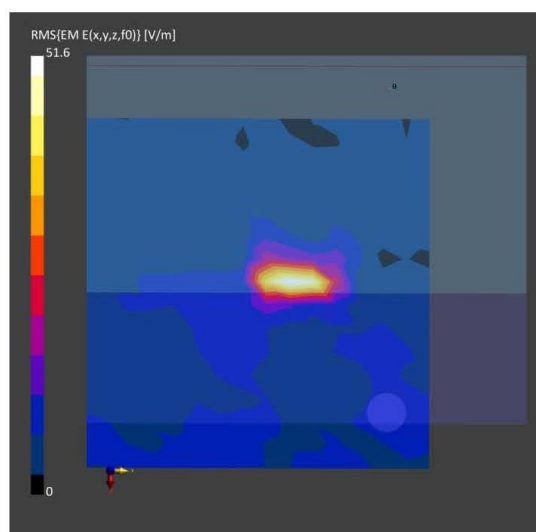
Phantom	Medium	Probe, Calibration Date	DAE, Calibration Date
mmWave- 1059	Air---	EUmmWV4 - SN9544_F1-55GHz, 2021-04-01	DAE3 Sn393, 2021-04-09

Scan Setup

	5G Scan
Grid Extents [mm]	120.0 x 120.0
Grid Steps [lambda]	0.25 x 0.25
Sensor Surface [mm]	2.0
MAIA	N/A

Measurement Results

	5G Scan
Date	2022-02-23
Avg. Area [cm ²]	4.00
psPDn+ [W/m ²]	1.42
psPDtot+ [W/m ²]	1.66
psPDmod+ [W/m ²]	2.02
E _{max} [V/m]	51.6
Power Drift [dB]	0.88



Measurement Report for 15Z90Q(INPAQ), SCREEN, U-NII-6, UID 10755 AAC, Channel 111 (6505.0MHz)**Device under Test Properties**

Model, Manufacturer	Dimensions [mm]	IMEI	DUT Type
, 15Z90Q(INPAQ)	355.0 x 230.0 x 6.0		Laptop

Exposure Conditions

Phantom Section	Position, Test Distance [mm]	Band	Group, UID	Frequency [MHz], Channel Number	Conversion Factor
5G Air	FRONT, 2.00	U-NII-6	WLAN, 10755-AAC	6505.0, 111	1.0

Hardware Setup

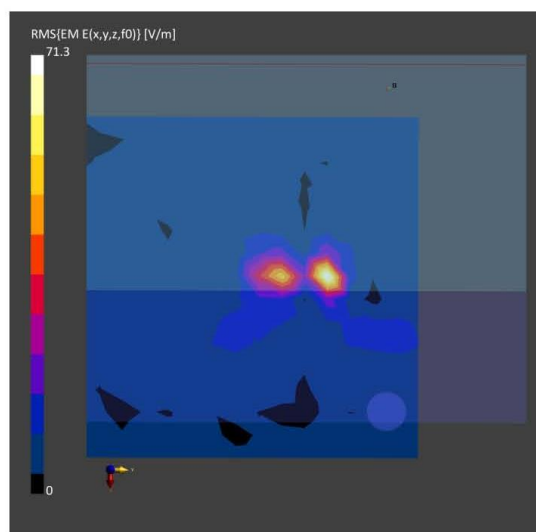
Phantom	Medium	Probe, Calibration Date	DAE, Calibration Date
mmWave- 1059	Air---	EUMmWV4 - SN9544_F1-55GHz, 2021-04-01	DAE3 Sn393, 2021-04-09

Scan Setup

	5G Scan
Grid Extents [mm]	120.0 x 120.0
Grid Steps [lambda]	0.25 x 0.25
Sensor Surface [mm]	2.0
MAIA	N/A

Measurement Results

	5G Scan
Date	2022-02-23
Avg. Area [cm ²]	4.00
psPDn+ [W/m ²]	1.84
psPDtot+ [W/m ²]	2.34
psPDmod+ [W/m ²]	3.39
E _{max} [V/m]	71.3
Power Drift [dB]	-5.23



Measurement Report for 15Z90Q(INPAQ), SCREEN, U-NII-7, UID 10755 AAC, Channel 175 (6825.0MHz)**Device under Test Properties**

Model, Manufacturer	Dimensions [mm]	IMEI	DUT Type
, 15Z90Q(INPAQ)	355.0 x 230.0 x 6.0		Laptop

Exposure Conditions

Phantom Section	Position, Test Distance [mm]	Band	Group, UID	Frequency [MHz], Channel Number	Conversion Factor
5G Air	FRONT, 2.00	U-NII-7	WLAN, 10755-AAC	6825.0, 175	1.0

Hardware Setup

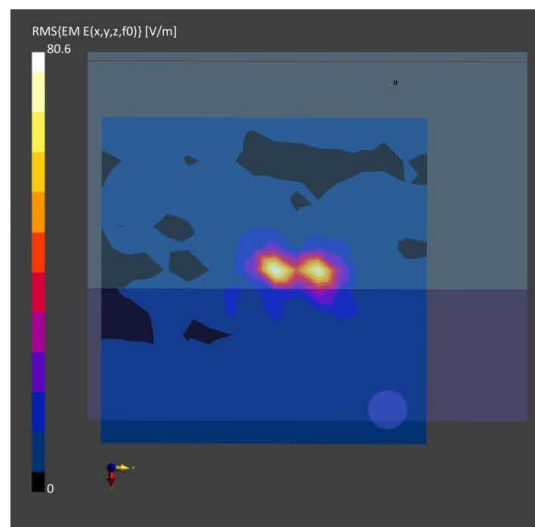
Phantom	Medium	Probe, Calibration Date	DAE, Calibration Date
mmWave- 1059	Air---	EUmmWV4 - SN9544_F1-55GHz, 2021-04-01	DAE3 Sn393, 2021-04-09

Scan Setup

	5G Scan
Grid Extents [mm]	120.0 x 120.0
Grid Steps [lambda]	0.25 x 0.25
Sensor Surface [mm]	2.0
MAIA	N/A

Measurement Results

	5G Scan
Date	2022-02-23
Avg. Area [cm ²]	4.00
psPDn+ [W/m ²]	3.46
psPDtot+ [W/m ²]	3.55
psPDmod+ [W/m ²]	4.86
E _{max} [V/m]	80.6
Power Drift [dB]	-10.84



Measurement Report for 15Z90Q(INPAQ), SCREEN, U-NII-8, UID 10755 AAC, Channel 207 (6985.0MHz)**Device under Test Properties**

Model, Manufacturer	Dimensions [mm]	IMEI	DUT Type
, 15Z90Q(INPAQ)	355.0 x 230.0 x 6.0		Laptop

Exposure Conditions

Phantom Section	Position, Test Distance [mm]	Band	Group, UID	Frequency [MHz], Channel Number	Conversion Factor
5G Air	FRONT, 2.00	U-NII-8	WLAN, 10755-AAC	6985.0, 207	1.0

Hardware Setup

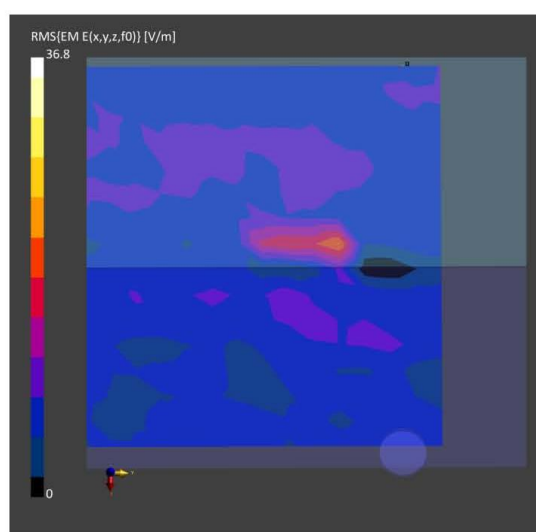
Phantom	Medium	Probe, Calibration Date	DAE, Calibration Date
mmWave- 1059	Air---	EUmmWV4 - SN9544_F1-55GHz, 2021-04-01	DAE3 Sn393, 2021-04-09

Scan Setup

	5G Scan
Grid Extents [mm]	120.0 x 120.0
Grid Steps [lambda]	0.25 x 0.25
Sensor Surface [mm]	2.0
MAIA	N/A

Measurement Results

	5G Scan
Date	2022-02-23
Avg. Area [cm ²]	4.00
psPDn+ [W/m ²]	0.291
psPDtot+ [W/m ²]	0.366
psPDmod+ [W/m ²]	0.397
E _{max} [V/m]	36.8
Power Drift [dB]	-1.92



Test SKU: SKU #1 (with INPAQ Antenna)
Antenna Chain 1 (Main)**Measurement Report for 15Z90Q(INPAQ), SCREEN, U-NII-5, UID 10755 AAC, Channel 15 (6025.0MHz)****Device under Test Properties**

Model, Manufacturer	Dimensions [mm]	IMEI	DUT Type
, 15Z90Q(INPAQ)	355.0 x 230.0 x 6.0		Laptop

Exposure Conditions

Phantom Section	Position, Test Distance [mm]	Band	Group, UID	Frequency [MHz], Channel Number	Conversion Factor
5G Air	FRONT, 2.00	U-NII-5	WLAN, 10755-AAC	6025.0, 15	1.0

Hardware Setup

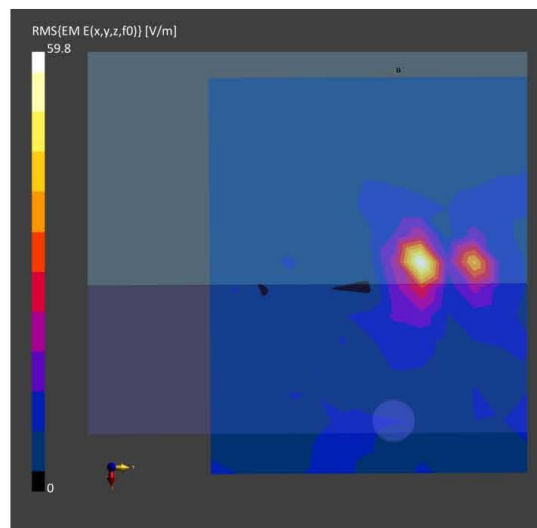
Phantom	Medium	Probe, Calibration Date	DAE, Calibration Date
mmWave- 1059	Air---	EUMmWV4 - SN9544_F1-55GHz, 2021-04-01	DAE3 Sn393, 2021-04-09

Scan Setup

	5G Scan
Grid Extents [mm]	120.0 x 120.0
Grid Steps [lambda]	0.25 x 0.25
Sensor Surface [mm]	2.0
MAIA	N/A

Measurement Results

	5G Scan
Date	2022-02-23
Avg. Area [cm ²]	4.00
psPDn+ [W/m ²]	0.656
psPDtot+ [W/m ²]	1.03
psPDmod+ [W/m ²]	1.45
E _{max} [V/m]	59.8
Power Drift [dB]	-0.08



Measurement Report for 15Z90Q(INPAQ), SCREEN,U-NII-5, UID 10755 AAC, Channel 79 (6345.0MHz)**Device under Test Properties**

Model, Manufacturer	Dimensions [mm]	IMEI	DUT Type
, 15Z90Q(INPAQ)	355.0 x 230.0 x 6.0		Laptop

Exposure Conditions

Phantom Section	Position, Test Distance [mm]	Band	Group, UID	Frequency [MHz], Channel Number	Conversion Factor
5G Air	FRONT, 2.00	U-NII-5	WLAN, 10755-AAC	6345.0, 79	1.0

Hardware Setup

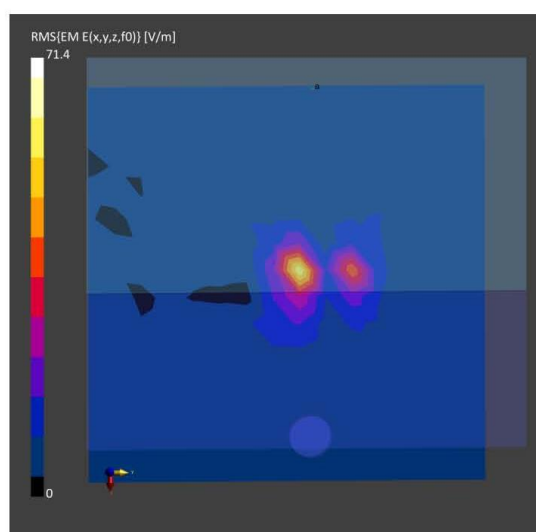
Phantom	Medium	Probe, Calibration Date	DAE, Calibration Date
mmWave- 1059	Air---	EUmmWV4 - SN9544_F1-55GHz, 2021-04-01	DAE3 Sn393, 2021-04-09

Scan Setup

	5G Scan
Grid Extents [mm]	120.0 x 120.0
Grid Steps [lambda]	0.25 x 0.25
Sensor Surface [mm]	2.0
MAIA	N/A

Measurement Results

	5G Scan
Date	2022-02-23
Avg. Area [cm ²]	4.00
psPDn+ [W/m ²]	0.765
psPDtot+ [W/m ²]	1.44
psPDmod+ [W/m ²]	1.83
E _{max} [V/m]	71.4
Power Drift [dB]	-0.17



Measurement Report for 15Z90Q(INPAQ), SCREEN,U-NII-6, UID 10755 AAC, Channel 111 (6505.0MHz)**Device under Test Properties**

Model, Manufacturer	Dimensions [mm]	IMEI	DUT Type
, 15Z90Q(INPAQ)	355.0 x 230.0 x 6.0		Laptop

Exposure Conditions

Phantom Section	Position, Test Distance [mm]	Band	Group, UID	Frequency [MHz], Channel Number	Conversion Factor
5G Air	FRONT, 2.00	U-NII-6	WLAN, 10755-AAC	6505.0, 111	1.0

Hardware Setup

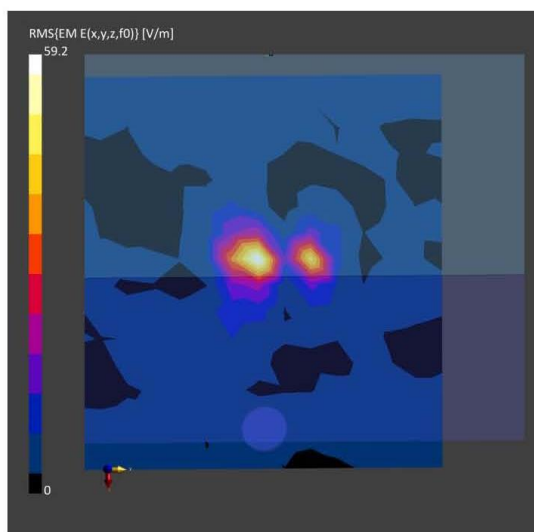
Phantom	Medium	Probe, Calibration Date	DAE, Calibration Date
mmWave- 1059	Air---	EUmmWV4 - SN9544_F1-55GHz, 2021-04-01	DAE3 Sn393, 2021-04-09

Scan Setup

	5G Scan
Grid Extents [mm]	120.0 x 120.0
Grid Steps [lambda]	0.25 x 0.25
Sensor Surface [mm]	2.0
MAIA	N/A

Measurement Results

	5G Scan
Date	2022-02-23
Avg. Area [cm ²]	4.00
psPDn+ [W/m ²]	1.62
psPDtot+ [W/m ²]	1.70
psPDmod+ [W/m ²]	2.20
E _{max} [V/m]	59.2
Power Drift [dB]	-0.12



Measurement Report for 15Z90Q(INPAQ), SCREEN,U-NII-7, UID 10755 AAC, Channel 175 (6825.0MHz)**Device under Test Properties**

Model, Manufacturer	Dimensions [mm]	IMEI	DUT Type
, 15Z90Q(INPAQ)	355.0 x 230.0 x 6.0		Laptop

Exposure Conditions

Phantom Section	Position, Test Distance [mm]	Band	Group, UID	Frequency [MHz], Channel Number	Conversion Factor
5G Air	FRONT, 2.00	U-NII-8	WLAN, 10755-AAC	6825.0, 175	1.0

Hardware Setup

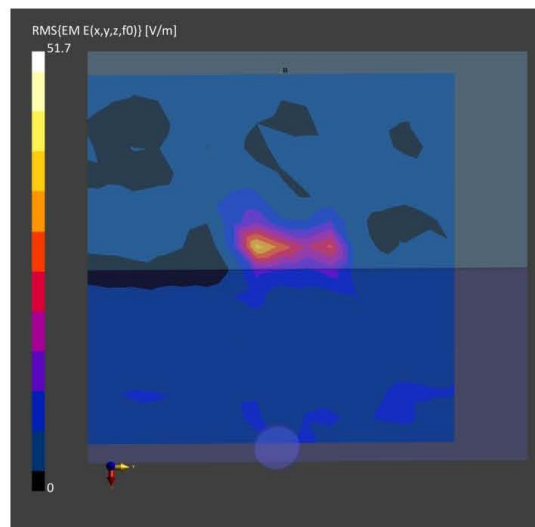
Phantom	Medium	Probe, Calibration Date	DAE, Calibration Date
mmWave- 1059	Air---	EUmmWV4 - SN9544_F1-55GHz, 2021-04-01	DAE3 Sn393, 2021-04-09

Scan Setup

	5G Scan
Grid Extents [mm]	120.0 x 120.0
Grid Steps [lambda]	0.25 x 0.25
Sensor Surface [mm]	2.0
MAIA	N/A

Measurement Results

	5G Scan
Date	2022-02-23
Avg. Area [cm ²]	4.00
psPDn+ [W/m ²]	0.869
psPDtot+ [W/m ²]	0.965
psPDmod+ [W/m ²]	1.27
E _{max} [V/m]	51.7
Power Drift [dB]	0.57



Measurement Report for 15Z90Q(INPAQ), SCREEN, U-NII-8, UID 10755 AAC, Channel 207 (6985.0MHz)

Device under Test Properties

Model, Manufacturer	Dimensions [mm]	IMEI	DUT Type
, 15Z90Q(INPAQ)	355.0 x 230.0 x 6.0		Laptop

Exposure Conditions

Phantom Section	Position, Test Distance [mm]	Band	Group, UID	Frequency [MHz], Channel Number	Conversion Factor
5G Air	FRONT, 2.00	U-NII-8	WLAN, 10755-AAC	6985.0, 207	1.0

Hardware Setup

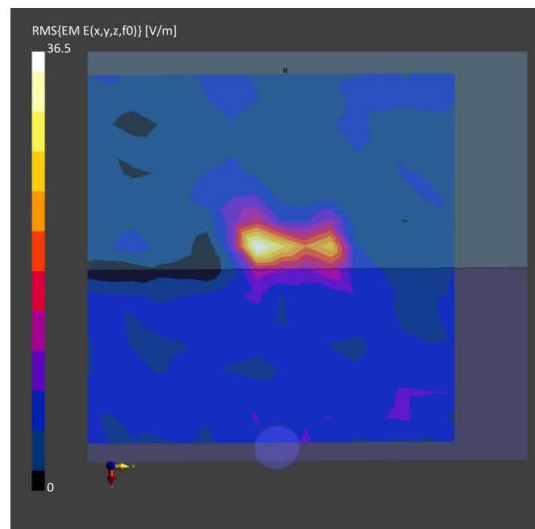
Phantom	Medium	Probe, Calibration Date	DAE, Calibration Date
mmWave- 1059	Air---	EUmmWV4 - SN9544_F1-55GHz, 2021-04-01	DAE3 Sn393, 2021-04-09

Scan Setup

	5G Scan
Grid Extents [mm]	120.0 x 120.0
Grid Steps [lambda]	0.25 x 0.25
Sensor Surface [mm]	2.0
MAIA	N/A

Measurement Results

	5G Scan
Date	2022-02-23
Avg. Area [cm ²]	4.00
psPDn+ [W/m ²]	0.726
psPDtot+ [W/m ²]	0.897
psPDmod+ [W/m ²]	1.02
E _{max} [V/m]	36.4
Power Drift [dB]	0.30



Test SKU: SKU #2 (with LUXSHARE-ICT Antenna)**Antenna Chain 0 (AUX)**

Measurement Report for 15Z90Q(LUXSHARE), SCREEN, U-NII-5, UID 10755 AAC, Channel 15 (6025.0MHz)

Device under Test Properties

Model, Manufacturer	Dimensions [mm]	IMEI	DUT Type
, 15Z90Q(LUXSHARE)	355.0 x 230.0 x 6.0		Laptop

Exposure Conditions

Phantom Section	Position, Test Distance [mm]	Band	Group, UID	Frequency [MHz], Channel Number	Conversion Factor
5G Air	FRONT, 2.00	U-NII-5	WLAN, 10755-AAC	6025.0, 15	1.0

Hardware Setup

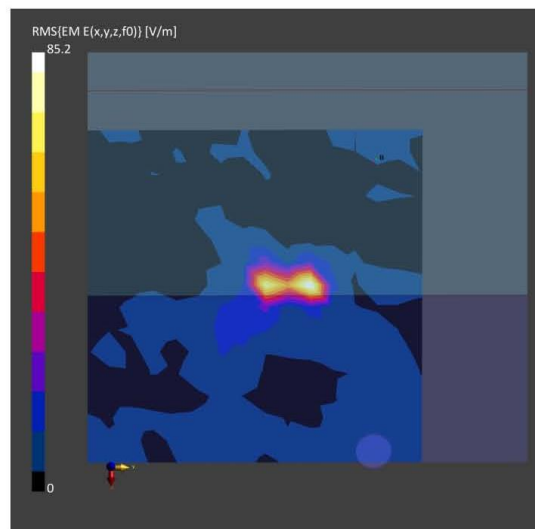
Phantom	Medium	Probe, Calibration Date	DAE, Calibration Date
mmWave- 1059	Air---	EUmmWV4 - SN9544_F1-55GHz, 2021-04-01	DAE3 Sn393, 2021-04-09

Scan Setup

	5G Scan
Grid Extents [mm]	120.0 x 120.0
Grid Steps [lambda]	0.25 x 0.25
Sensor Surface [mm]	2.0
MAIA	N/A

Measurement Results

	5G Scan
Date	2022-02-23
Avg. Area [cm ²]	4.00
psPDn+ [W/m ²]	3.03
psPDtot+ [W/m ²]	3.70
psPDmod+ [W/m ²]	5.03
E _{max} [V/m]	85.2
Power Drift [dB]	-0.27



Measurement Report for 15Z90Q(LUXSHARE), SCREEN, U-NII-5, UID 10755 AAC, Channel 79 (6345.0MHz)

Device under Test Properties

Model, Manufacturer	Dimensions [mm]	IMEI	DUT Type
, 15Z90Q(LUXSHARE)	355.0 x 230.0 x 6.0		Laptop

Exposure Conditions

Phantom Section	Position, Test Distance [mm]	Band	Group, UID	Frequency [MHz], Channel Number	Conversion Factor
5G Air	FRONT, 2.00	U-NII-5	WLAN, 10755-AAC	6345.0, 79	1.0

Hardware Setup

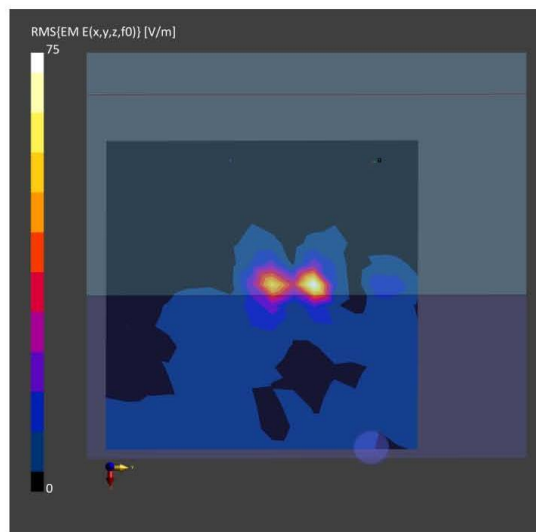
Phantom	Medium	Probe, Calibration Date	DAE, Calibration Date
mmWave- 1059	Air---	EUmmWV4 - SN9544_F1-55GHz, 2021-04-01	DAE3 Sn393, 2021-04-09

Scan Setup

	5G Scan
Grid Extents [mm]	120.0 x 120.0
Grid Steps [lambda]	0.25 x 0.25
Sensor Surface [mm]	2.0
MAIA	N/A

Measurement Results

	5G Scan
Date	2022-02-23
Avg. Area [cm ²]	4.00
psPDn+ [W/m ²]	2.08
psPDtot+ [W/m ²]	2.54
psPDmod+ [W/m ²]	3.49
E _{max} [V/m]	75.0
Power Drift [dB]	-2.10



Measurement Report for 15Z90Q(LUXSHARE), SCREEN,U-NII-6, UID 10755 AAC, Channel 111 (6505.0MHz)**Device under Test Properties**

Model, Manufacturer	Dimensions [mm]	IMEI	DUT Type
, 15Z90Q(LUXSHARE)	355.0 x 230.0 x 6.0		Laptop

Exposure Conditions

Phantom Section	Position, Test Distance [mm]	Band	Group, UID	Frequency [MHz], Channel Number	Conversion Factor
5G Air	FRONT, 2.00	U-NII-6	WLAN, 10755-AAC	6505.0, 111	1.0

Hardware Setup

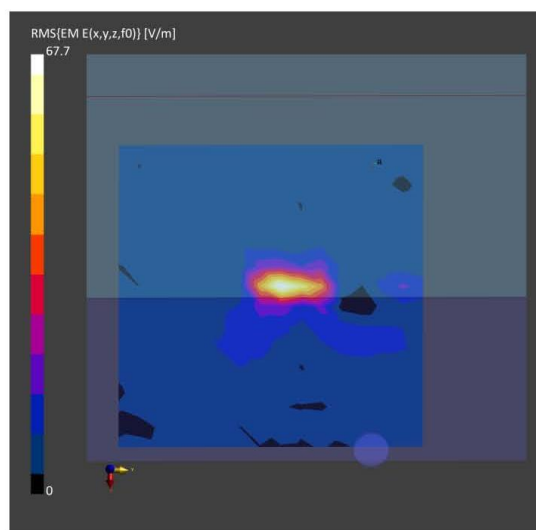
Phantom	Medium	Probe, Calibration Date	DAE, Calibration Date
mmWave- 1059	Air---	EUMmWV4 - SN9544_F1-55GHz, 2021-04-01	DAE3 Sn393, 2021-04-09

Scan Setup

	5G Scan
Grid Extents [mm]	120.0 x 120.0
Grid Steps [lambda]	0.25 x 0.25
Sensor Surface [mm]	2.0
MAIA	N/A

Measurement Results

	5G Scan
Date	2022-02-23
Avg. Area [cm ²]	4.00
psPDn+ [W/m ²]	2.41
psPDtot+ [W/m ²]	2.88
psPDmod+ [W/m ²]	3.12
E _{max} [V/m]	67.7
Power Drift [dB]	0.02



Measurement Report for 15Z90Q(LUXSHARE), SCREEN, U-NII-7, UID 10755 AAC, Channel 175 (6825.0MHz)**Device under Test Properties**

Model, Manufacturer	Dimensions [mm]	IMEI	DUT Type
, 15Z90Q(LUXSHARE)	355.0 x 230.0 x 6.0		Laptop

Exposure Conditions

Phantom Section	Position, Test Distance [mm]	Band	Group, UID	Frequency [MHz], Channel Number	Conversion Factor
5G Air	FRONT, 2.00	U-NII-7	WLAN, 10755-AAC	6825.0, 175	1.0

Hardware Setup

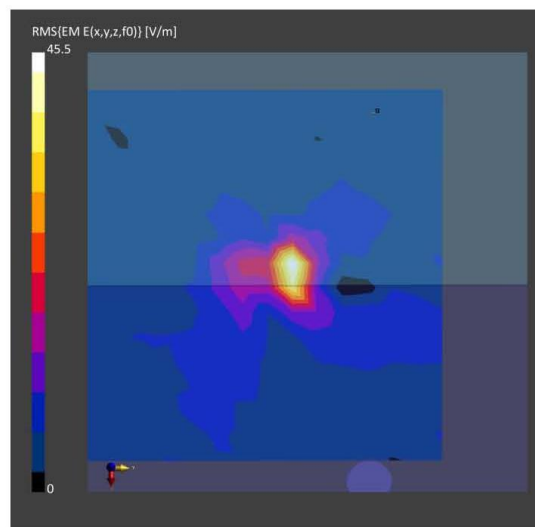
Phantom	Medium	Probe, Calibration Date	DAE, Calibration Date
mmWave- 1059	Air---	EUmmWV4 - SN9544_F1-55GHz, 2021-04-01	DAE3 Sn393, 2021-04-09

Scan Setup

	5G Scan
Grid Extents [mm]	120.0 x 120.0
Grid Steps [lambda]	0.25 x 0.25
Sensor Surface [mm]	2.0
MAIA	N/A

Measurement Results

	5G Scan
Date	2022-02-23
Avg. Area [cm ²]	4.00
psPDn+ [W/m ²]	0.441
psPDtot+ [W/m ²]	0.791
psPDmod+ [W/m ²]	1.31
E _{max} [V/m]	45.4
Power Drift [dB]	-0.15



Measurement Report for 15Z90Q(LUXSHARE), SCREEN, U-NII-8, UID 10755 AAC, Channel 207 (6985.0MHz)

Device under Test Properties

Model, Manufacturer	Dimensions [mm]	IMEI	DUT Type
, 15Z90Q(LUXSHARE)	355.0 x 230.0 x 6.0		Laptop

Exposure Conditions

Phantom Section	Position, Test Distance [mm]	Band	Group, UID	Frequency [MHz], Channel Number	Conversion Factor
5G Air	FRONT, 2.00	U-NII-8	WLAN, 10755-AAC	6985.0, 207	1.0

Hardware Setup

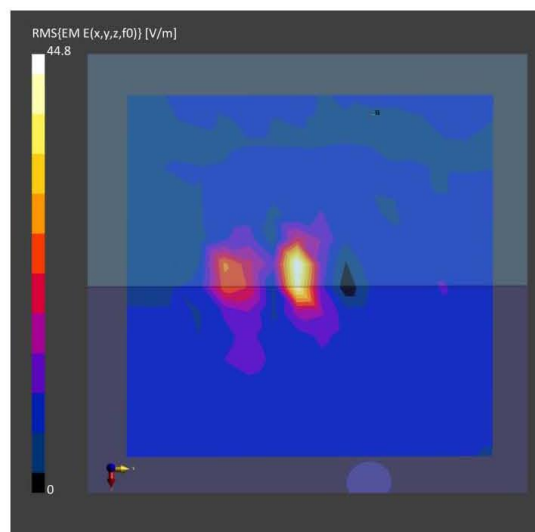
Phantom	Medium	Probe, Calibration Date	DAE, Calibration Date
mmWave- 1059	Air---	EUmmWV4 - SN9544_F1-55GHz, 2021-04-01	DAE3 Sn393, 2021-04-09

Scan Setup

	5G Scan
Grid Extents [mm]	120.0 x 120.0
Grid Steps [lambda]	0.25 x 0.25
Sensor Surface [mm]	2.0
MAIA	N/A

Measurement Results

	5G Scan
Date	2022-02-23
Avg. Area [cm ²]	4.00
psPDn+ [W/m ²]	0.466
psPDtot+ [W/m ²]	0.771
psPDmod+ [W/m ²]	1.13
E _{max} [V/m]	44.8
Power Drift [dB]	-0.09



Test SKU: SKU #2 (with LUXSHARE-ICT Antenna)**Antenna Chain 1 (Main)**

Measurement Report for 15Z90Q(LUXSHARE), SCREEN,U-NII-5, UID 10755 AAC, Channel 15 (6025.0MHz)

Device under Test Properties

Model, Manufacturer	Dimensions [mm]	IMEI	DUT Type
, 15Z90Q(LUXSHARE)	355.0 x 230.0 x 6.0		Laptop

Exposure Conditions

Phantom Section	Position, Test Distance [mm]	Band	Group, UID	Frequency [MHz], Channel Number	Conversion Factor
5G Air	FRONT, 2.00	U-NII-5	WLAN, 10755-AAC	6025.0, 15	1.0

Hardware Setup

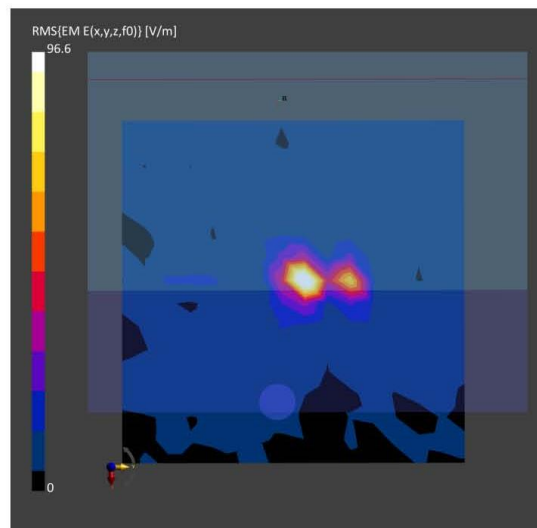
Phantom	Medium	Probe, Calibration Date	DAE, Calibration Date
mmWave- 1059	Air---	EUMmWV4 - SN9544_F1-55GHz, 2021-04-01	DAE3 Sn393, 2021-04-09

Scan Setup

	5G Scan
Grid Extents [mm]	120.0 x 120.0
Grid Steps [lambda]	0.25 x 0.25
Sensor Surface [mm]	2.0
MAIA	N/A

Measurement Results

	5G Scan
Date	2022-02-23
Avg. Area [cm ²]	4.00
psPDn+ [W/m ²]	5.09
psPDtot+ [W/m ²]	5.49
psPDmod+ [W/m ²]	6.4
E _{max} [V/m]	96.6
Power Drift [dB]	-2.06



Measurement Report for 15Z90Q(LUXSHARE), SCREEN, U-NII-5, UID 10755 AAC, Channel 79 (6345.0MHz)

Device under Test Properties

Model, Manufacturer	Dimensions [mm]	IMEI	DUT Type
, 15Z90Q(LUXSHARE)	355.0 x 230.0 x 6.0		Laptop

Exposure Conditions

Phantom Section	Position, Test Distance [mm]	Band	Group, UID	Frequency [MHz], Channel Number	Conversion Factor
5G Air	FRONT, 2.00	U-NII-5	WLAN, 10755-AAC	6345.0, 79	1.0

Hardware Setup

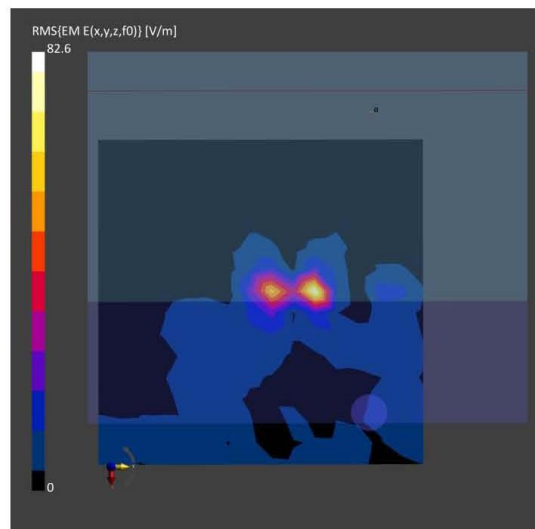
Phantom	Medium	Probe, Calibration Date	DAE, Calibration Date
mmWave- 1059	Air---	EUmmWV4 - SN9544_F1-55GHz, 2021-04-01	DAE3 Sn393, 2021-04-09

Scan Setup

	5G Scan
Grid Extents [mm]	120.0 x 120.0
Grid Steps [lambda]	0.25 x 0.25
Sensor Surface [mm]	2.0
MAIA	N/A

Measurement Results

	5G Scan
Date	2022-02-23
Avg. Area [cm ²]	4.00
psPDn+ [W/m ²]	2.68
psPDtot+ [W/m ²]	3.24
psPDmod+ [W/m ²]	3.95
E _{max} [V/m]	82.6
Power Drift [dB]	-2.55



Measurement Report for 15Z90Q(LUXSHARE), SCREEN, U-NII-6, UID 10755 AAC, Channel 111 (6505.0MHz)**Device under Test Properties**

Model, Manufacturer	Dimensions [mm]	IMEI	DUT Type
, 15Z90Q(LUXSHARE)	355.0 x 230.0 x 6.0		Laptop

Exposure Conditions

Phantom Section	Position, Test Distance [mm]	Band	Group, UID	Frequency [MHz], Channel Number	Conversion Factor
5G Air	FRONT, 2.00	U-NII-6	WLAN, 10755-AAC	6505.0, 111	1.0

Hardware Setup

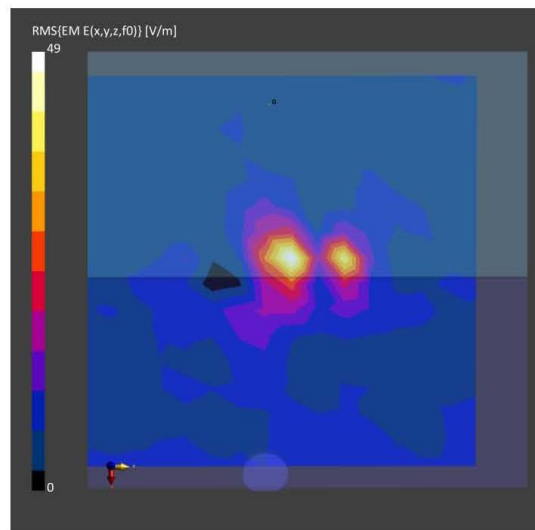
Phantom	Medium	Probe, Calibration Date	DAE, Calibration Date
mmWave- 1059	Air---	EUMmWV4 - SN9544_F1-55GHz, 2021-04-01	DAE3 Sn393, 2021-04-09

Scan Setup

	5G Scan
Grid Extents [mm]	120.0 x 120.0
Grid Steps [lambda]	0.25 x 0.25
Sensor Surface [mm]	2.0
MAIA	N/A

Measurement Results

	5G Scan
Date	2022-02-23
Avg. Area [cm ²]	4.00
psPDn+ [W/m ²]	0.466
psPDtot+ [W/m ²]	0.892
psPDmod+ [W/m ²]	1.47
E _{max} [V/m]	49.0
Power Drift [dB]	-0.03



Measurement Report for 15Z90Q(LUXSHARE), SCREEN,U-NII-7, UID 10755 AAC, Channel 175 (6825.0MHz)

Device under Test Properties

Model, Manufacturer	Dimensions [mm]	IMEI	DUT Type
, 15Z90Q(LUXSHARE)	355.0 x 230.0 x 6.0		Laptop

Exposure Conditions

Phantom Section	Position, Test Distance [mm]	Band	Group, UID	Frequency [MHz], Channel Number	Conversion Factor
5G Air	FRONT, 2.00	U-NII-8	WLAN, 10755-AAC	6825.0, 175	1.0

Hardware Setup

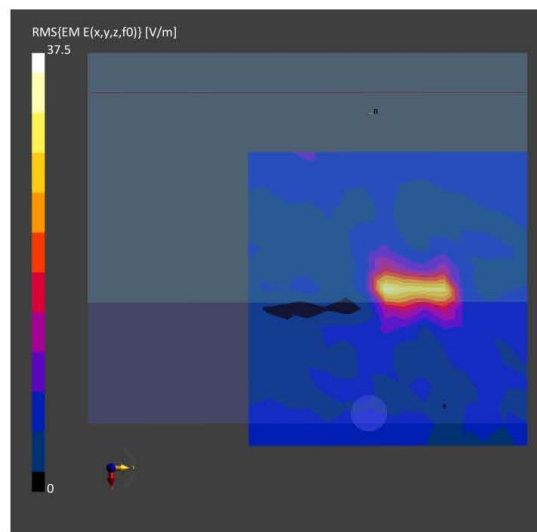
Phantom	Medium	Probe, Calibration Date	DAE, Calibration Date
mmWave- 1059	Air---	EUMmWV4 - SN9544_F1-55GHz, 2021-04-01	DAE3 Sn393, 2021-04-09

Scan Setup

	5G Scan
Grid Extents [mm]	120.0 x 120.0
Grid Steps [lambda]	0.25 x 0.25
Sensor Surface [mm]	2.0
MAIA	N/A

Measurement Results

	5G Scan
Date	2022-02-23
Avg. Area [cm ²]	4.00
psPDn+ [W/m ²]	0.994
psPDtot+ [W/m ²]	1.82
psPDmod+ [W/m ²]	1.77
E _{max} [V/m]	37.5
Power Drift [dB]	0.94



Measurement Report for 15Z90Q(LUXSHARE), SCREEN, U-NII-8, UID 10755 AAC, Channel 207 (6985.0MHz)

Device under Test Properties

Model, Manufacturer	Dimensions [mm]	IMEI	DUT Type
, 15Z90Q(LUXSHARE)	355.0 x 230.0 x 6.0		Laptop

Exposure Conditions

Phantom Section	Position, Test Distance [mm]	Band	Group, UID	Frequency [MHz], Channel Number	Conversion Factor
5G Air	FRONT, 2.00	U-NII-8	WLAN, 10755-AAC	6985.0, 207	1.0

Hardware Setup

Phantom	Medium	Probe, Calibration Date	DAE, Calibration Date
mmWave- 1059	Air---	EUmmWV4 - SN9544_F1-55GHz, 2021-04-01	DAE3 Sn393, 2021-04-09

Scan Setup

	5G Scan
Grid Extents [mm]	120.0 x 120.0
Grid Steps [lambda]	0.25 x 0.25
Sensor Surface [mm]	2.0
MAIA	N/A

Measurement Results

	5G Scan
Date	2022-02-23
Avg. Area [cm ²]	4.00
psPDn+ [W/m ²]	0.918
psPDtot+ [W/m ²]	1.45
psPDmod+ [W/m ²]	1.52
E _{max} [V/m]	33.1
Power Drift [dB]	0.83

