



	<b>86</b>																																																																																			
<b>Mode</b>	<b>Band Edge - L</b>																																																																																			
	<b>U-NII-2A_5.25-5.35_802.11ax HE80_CH58_484/66_5290MHz</b>																																																																																			
<b>ANT</b>	<b>1+2</b>																																																																																			
<b>Pol.</b>	<b>Vertical</b>	<b>Fundamental</b>																																																																																		
<b>Peak</b>	<p>Site : 03CH16-HY Condition: PEAK_BE_74 3m 91200-1522_240328 VERTICAL : RBW:1000.000kHz VBW:3000.000kHz SWT:Auto</p> <table border="1"> <thead> <tr> <th>Limit</th> <th>Read</th> <th>Ant</th> <th>Cable</th> <th>Preamp</th> <th>Aux</th> <th>APos</th> <th>TPos</th> <th>Remark</th> </tr> <tr> <th>Freq</th> <th>Level</th> <th>Line</th> <th>Margin</th> <th>Level</th> <th>Factor</th> <th>Loss</th> <th>Factor</th> <th>Factor</th> </tr> <tr> <th>MHz</th> <th>dBuV/m</th> <th>dBuV/m</th> <th>dB</th> <th>dBuV</th> <th>dB/m</th> <th>dB</th> <th>dB</th> <th>cm</th> <th>deg</th> </tr> </thead> <tbody> <tr> <td>1</td> <td>5015.08</td> <td>55.92</td> <td>74.00</td> <td>-18.08</td> <td>41.22</td> <td>33.04</td> <td>11.07</td> <td>29.41</td> <td>0.00</td> <td>200</td> <td>87</td> <td>PEAK</td> </tr> </tbody> </table>	Limit	Read	Ant	Cable	Preamp	Aux	APos	TPos	Remark	Freq	Level	Line	Margin	Level	Factor	Loss	Factor	Factor	MHz	dBuV/m	dBuV/m	dB	dBuV	dB/m	dB	dB	cm	deg	1	5015.08	55.92	74.00	-18.08	41.22	33.04	11.07	29.41	0.00	200	87	PEAK	<p>Site : 03CH16-HY Condition: PEAK(UNII) 3m 91200-1522_240328 VERTICAL : RBW:1000.000kHz VBW:3000.000kHz SWT:Auto</p> <table border="1"> <thead> <tr> <th>Limit</th> <th>Read</th> <th>Ant</th> <th>Cable</th> <th>Preamp</th> <th>Aux</th> <th>APos</th> <th>TPos</th> <th>Remark</th> </tr> <tr> <th>Freq</th> <th>Level</th> <th>Line</th> <th>Margin</th> <th>Level</th> <th>Factor</th> <th>Loss</th> <th>Factor</th> <th>Factor</th> </tr> <tr> <th>MHz</th> <th>dBuV/m</th> <th>dBuV/m</th> <th>dB</th> <th>dBuV</th> <th>dB/m</th> <th>dB</th> <th>dB</th> <th>cm</th> <th>deg</th> </tr> </thead> <tbody> <tr> <td>1</td> <td>5290.00</td> <td>103.33</td> <td>-----</td> <td>-----</td> <td>88.58</td> <td>32.80</td> <td>11.32</td> <td>29.37</td> <td>0.00</td> <td>200</td> <td>87</td> <td>PEAK</td> </tr> </tbody> </table>	Limit	Read	Ant	Cable	Preamp	Aux	APos	TPos	Remark	Freq	Level	Line	Margin	Level	Factor	Loss	Factor	Factor	MHz	dBuV/m	dBuV/m	dB	dBuV	dB/m	dB	dB	cm	deg	1	5290.00	103.33	-----	-----	88.58	32.80	11.32	29.37	0.00	200	87	PEAK
Limit	Read	Ant	Cable	Preamp	Aux	APos	TPos	Remark																																																																												
Freq	Level	Line	Margin	Level	Factor	Loss	Factor	Factor																																																																												
MHz	dBuV/m	dBuV/m	dB	dBuV	dB/m	dB	dB	cm	deg																																																																											
1	5015.08	55.92	74.00	-18.08	41.22	33.04	11.07	29.41	0.00	200	87	PEAK																																																																								
Limit	Read	Ant	Cable	Preamp	Aux	APos	TPos	Remark																																																																												
Freq	Level	Line	Margin	Level	Factor	Loss	Factor	Factor																																																																												
MHz	dBuV/m	dBuV/m	dB	dBuV	dB/m	dB	dB	cm	deg																																																																											
1	5290.00	103.33	-----	-----	88.58	32.80	11.32	29.37	0.00	200	87	PEAK																																																																								
<b>Avg.</b>	<p>Site : 03CH16-HY Condition: AVG_BE_54 3m 91200-1522_240328 VERTICAL : RBW:1000.000kHz VBW:0.010kHz SWT:Auto</p> <table border="1"> <thead> <tr> <th>Limit</th> <th>Read</th> <th>Ant</th> <th>Cable</th> <th>Preamp</th> <th>Aux</th> <th>APos</th> <th>TPos</th> <th>Remark</th> </tr> <tr> <th>Freq</th> <th>Level</th> <th>Line</th> <th>Margin</th> <th>Level</th> <th>Factor</th> <th>Loss</th> <th>Factor</th> <th>Factor</th> </tr> <tr> <th>MHz</th> <th>dBuV/m</th> <th>dBuV/m</th> <th>dB</th> <th>dBuV</th> <th>dB/m</th> <th>dB</th> <th>dB</th> <th>cm</th> <th>deg</th> </tr> </thead> <tbody> <tr> <td>1</td> <td>5126.73</td> <td>45.16</td> <td>54.00</td> <td>-8.84</td> <td>30.44</td> <td>32.95</td> <td>11.16</td> <td>29.39</td> <td>0.00</td> <td>200</td> <td>87</td> <td>AVERAGE</td> </tr> </tbody> </table>	Limit	Read	Ant	Cable	Preamp	Aux	APos	TPos	Remark	Freq	Level	Line	Margin	Level	Factor	Loss	Factor	Factor	MHz	dBuV/m	dBuV/m	dB	dBuV	dB/m	dB	dB	cm	deg	1	5126.73	45.16	54.00	-8.84	30.44	32.95	11.16	29.39	0.00	200	87	AVERAGE	<p>Site : 03CH16-HY Condition: AVG_54 3m 91200-1522_240328 VERTICAL : RBW:1000.000kHz VBW:0.010kHz SWT:Auto</p> <table border="1"> <thead> <tr> <th>Limit</th> <th>Read</th> <th>Ant</th> <th>Cable</th> <th>Preamp</th> <th>Aux</th> <th>APos</th> <th>TPos</th> <th>Remark</th> </tr> <tr> <th>Freq</th> <th>Level</th> <th>Line</th> <th>Margin</th> <th>Level</th> <th>Factor</th> <th>Loss</th> <th>Factor</th> <th>Factor</th> </tr> <tr> <th>MHz</th> <th>dBuV/m</th> <th>dBuV/m</th> <th>dB</th> <th>dBuV</th> <th>dB/m</th> <th>dB</th> <th>dB</th> <th>cm</th> <th>deg</th> </tr> </thead> <tbody> <tr> <td>1</td> <td>5290.00</td> <td>94.75</td> <td>-----</td> <td>-----</td> <td>80.00</td> <td>32.80</td> <td>11.32</td> <td>29.37</td> <td>0.00</td> <td>200</td> <td>87</td> <td>AVERAGE</td> </tr> </tbody> </table>	Limit	Read	Ant	Cable	Preamp	Aux	APos	TPos	Remark	Freq	Level	Line	Margin	Level	Factor	Loss	Factor	Factor	MHz	dBuV/m	dBuV/m	dB	dBuV	dB/m	dB	dB	cm	deg	1	5290.00	94.75	-----	-----	80.00	32.80	11.32	29.37	0.00	200	87	AVERAGE
Limit	Read	Ant	Cable	Preamp	Aux	APos	TPos	Remark																																																																												
Freq	Level	Line	Margin	Level	Factor	Loss	Factor	Factor																																																																												
MHz	dBuV/m	dBuV/m	dB	dBuV	dB/m	dB	dB	cm	deg																																																																											
1	5126.73	45.16	54.00	-8.84	30.44	32.95	11.16	29.39	0.00	200	87	AVERAGE																																																																								
Limit	Read	Ant	Cable	Preamp	Aux	APos	TPos	Remark																																																																												
Freq	Level	Line	Margin	Level	Factor	Loss	Factor	Factor																																																																												
MHz	dBuV/m	dBuV/m	dB	dBuV	dB/m	dB	dB	cm	deg																																																																											
1	5290.00	94.75	-----	-----	80.00	32.80	11.32	29.37	0.00	200	87	AVERAGE																																																																								



	<b>86</b>																																							
<b>Mode</b>	<b>Band Edge - R</b>																																							
	<b>U-NII-2A_5.25-5.35_802.11ax HE80_CH58_484/66_5290MHz</b>																																							
<b>ANT</b>	<b>1+2</b>																																							
<b>Pol.</b>	<b>Vertical</b>	<b>Fundamental</b>																																						
<b>Peak</b>	<p>Site : 03CH16-HY Condition: PEAK_BE_74 3m 91200-1522_240328 VERTICAL : RBW:1000.000kHz VBW:3000.000kHz SMT:Auto</p> <table border="1"> <thead> <tr> <th>Limit</th> <th>Read</th> <th>Ant</th> <th>Cable</th> <th>Preamp</th> <th>Aux</th> <th>APos</th> <th>TPos</th> <th>Remark</th> </tr> <tr> <th>Freq</th> <th>Level</th> <th>Line</th> <th>Margin</th> <th>Level</th> <th>Factor</th> <th>Loss</th> <th>Factor</th> <th>Factor</th> </tr> <tr> <th>MHz</th> <th>dBuV/m</th> <th>dBuV/m</th> <th>dB</th> <th>dBuV</th> <th>dB/m</th> <th>dB</th> <th>dB</th> <th>cm</th> <th>deg</th> </tr> </thead> <tbody> <tr> <td>1 5355.11</td> <td>54.83</td> <td>74.00</td> <td>-19.17</td> <td>40.03</td> <td>32.80</td> <td>11.37</td> <td>29.37</td> <td>0.00</td> <td>200 87 PEAK</td> </tr> </tbody> </table>	Limit	Read	Ant	Cable	Preamp	Aux	APos	TPos	Remark	Freq	Level	Line	Margin	Level	Factor	Loss	Factor	Factor	MHz	dBuV/m	dBuV/m	dB	dBuV	dB/m	dB	dB	cm	deg	1 5355.11	54.83	74.00	-19.17	40.03	32.80	11.37	29.37	0.00	200 87 PEAK	<b>Blank</b>
Limit	Read	Ant	Cable	Preamp	Aux	APos	TPos	Remark																																
Freq	Level	Line	Margin	Level	Factor	Loss	Factor	Factor																																
MHz	dBuV/m	dBuV/m	dB	dBuV	dB/m	dB	dB	cm	deg																															
1 5355.11	54.83	74.00	-19.17	40.03	32.80	11.37	29.37	0.00	200 87 PEAK																															
<b>Avg.</b>	<p>Site : 03CH16-HY Condition: AVG_BE_54 3m 91200-1522_240328 VERTICAL : RBW:1000.000kHz VBW:0.010kHz SMT:Auto</p> <table border="1"> <thead> <tr> <th>Limit</th> <th>Read</th> <th>Ant</th> <th>Cable</th> <th>Preamp</th> <th>Aux</th> <th>APos</th> <th>TPos</th> <th>Remark</th> </tr> <tr> <th>Freq</th> <th>Level</th> <th>Line</th> <th>Margin</th> <th>Level</th> <th>Factor</th> <th>Loss</th> <th>Factor</th> <th>Factor</th> </tr> <tr> <th>MHz</th> <th>dBuV/m</th> <th>dBuV/m</th> <th>dB</th> <th>dBuV</th> <th>dB/m</th> <th>dB</th> <th>dB</th> <th>cm</th> <th>deg</th> </tr> </thead> <tbody> <tr> <td>1 5460.00</td> <td>44.67</td> <td>54.00</td> <td>-9.33</td> <td>29.74</td> <td>32.80</td> <td>11.48</td> <td>29.35</td> <td>0.00</td> <td>200 87 AVERAGE</td> </tr> </tbody> </table>	Limit	Read	Ant	Cable	Preamp	Aux	APos	TPos	Remark	Freq	Level	Line	Margin	Level	Factor	Loss	Factor	Factor	MHz	dBuV/m	dBuV/m	dB	dBuV	dB/m	dB	dB	cm	deg	1 5460.00	44.67	54.00	-9.33	29.74	32.80	11.48	29.35	0.00	200 87 AVERAGE	<b>Blank</b>
Limit	Read	Ant	Cable	Preamp	Aux	APos	TPos	Remark																																
Freq	Level	Line	Margin	Level	Factor	Loss	Factor	Factor																																
MHz	dBuV/m	dBuV/m	dB	dBuV	dB/m	dB	dB	cm	deg																															
1 5460.00	44.67	54.00	-9.33	29.74	32.80	11.48	29.35	0.00	200 87 AVERAGE																															



Mode	86																																																																																																											
	Harmonic																																																																																																											
	U-NII-2A_5.25-5.35_802.11ax HE80_CH58_484/66_5290MHz																																																																																																											
ANT	1+2																																																																																																											
Pol.	Horizontal	Vertical																																																																																																										
Peak Avg.	<p>Site : 03CH16-HY Condition: PEAK(UNII) 3m 91200-1522_240328 HORIZONTAL</p> <table border="1"> <thead> <tr> <th>Limit</th> <th>Read</th> <th>Ant</th> <th>Cable</th> <th>Preamp</th> <th>Aux</th> <th>APos</th> <th>TPos</th> <th>Remark</th> </tr> <tr> <th>Freq</th> <th>Level</th> <th>Line</th> <th>Margin</th> <th>Level</th> <th>Factor</th> <th>Loss</th> <th>Factor</th> <th>Factor</th> </tr> <tr> <th>MHz</th> <th>dBuV/m</th> <th>dBuV/m</th> <th>dB</th> <th>dBuV</th> <th>dB/m</th> <th>dB</th> <th>dB</th> <th>dB</th> </tr> </thead> <tbody> <tr> <td>1</td> <td>10580.00</td> <td>47.37</td> <td>68.20</td> <td>-20.83</td> <td>58.50</td> <td>38.74</td> <td>15.98</td> <td>66.30</td> <td>0.45</td> <td>--</td> <td>--</td> <td>PEAK</td> </tr> <tr> <td>2</td> <td>15870.00</td> <td>47.19</td> <td>74.00</td> <td>-26.81</td> <td>56.10</td> <td>37.32</td> <td>19.64</td> <td>66.49</td> <td>0.62</td> <td>--</td> <td>--</td> <td>PEAK</td> </tr> </tbody> </table>	Limit	Read	Ant	Cable	Preamp	Aux	APos	TPos	Remark	Freq	Level	Line	Margin	Level	Factor	Loss	Factor	Factor	MHz	dBuV/m	dBuV/m	dB	dBuV	dB/m	dB	dB	dB	1	10580.00	47.37	68.20	-20.83	58.50	38.74	15.98	66.30	0.45	--	--	PEAK	2	15870.00	47.19	74.00	-26.81	56.10	37.32	19.64	66.49	0.62	--	--	PEAK	<p>Site : 03CH16-HY Condition: PEAK(UNII) 3m 91200-1522_240328 VERTICAL</p> <table border="1"> <thead> <tr> <th>Limit</th> <th>Read</th> <th>Ant</th> <th>Cable</th> <th>Preamp</th> <th>Aux</th> <th>APos</th> <th>TPos</th> <th>Remark</th> </tr> <tr> <th>Freq</th> <th>Level</th> <th>Line</th> <th>Margin</th> <th>Level</th> <th>Factor</th> <th>Loss</th> <th>Factor</th> <th>Factor</th> </tr> <tr> <th>MHz</th> <th>dBuV/m</th> <th>dBuV/m</th> <th>dB</th> <th>dBuV</th> <th>dB/m</th> <th>dB</th> <th>dB</th> <th>dB</th> </tr> </thead> <tbody> <tr> <td>1</td> <td>10580.00</td> <td>47.55</td> <td>68.20</td> <td>-20.65</td> <td>58.68</td> <td>38.74</td> <td>15.98</td> <td>66.30</td> <td>0.45</td> <td>--</td> <td>--</td> <td>PEAK</td> </tr> <tr> <td>2</td> <td>15870.00</td> <td>47.95</td> <td>74.00</td> <td>-26.05</td> <td>56.86</td> <td>37.32</td> <td>19.64</td> <td>66.49</td> <td>0.62</td> <td>--</td> <td>--</td> <td>PEAK</td> </tr> </tbody> </table>	Limit	Read	Ant	Cable	Preamp	Aux	APos	TPos	Remark	Freq	Level	Line	Margin	Level	Factor	Loss	Factor	Factor	MHz	dBuV/m	dBuV/m	dB	dBuV	dB/m	dB	dB	dB	1	10580.00	47.55	68.20	-20.65	58.68	38.74	15.98	66.30	0.45	--	--	PEAK	2	15870.00	47.95	74.00	-26.05	56.86	37.32	19.64	66.49	0.62	--	--	PEAK
	Limit	Read	Ant	Cable	Preamp	Aux	APos	TPos	Remark																																																																																																			
Freq	Level	Line	Margin	Level	Factor	Loss	Factor	Factor																																																																																																				
MHz	dBuV/m	dBuV/m	dB	dBuV	dB/m	dB	dB	dB																																																																																																				
1	10580.00	47.37	68.20	-20.83	58.50	38.74	15.98	66.30	0.45	--	--	PEAK																																																																																																
2	15870.00	47.19	74.00	-26.81	56.10	37.32	19.64	66.49	0.62	--	--	PEAK																																																																																																
Limit	Read	Ant	Cable	Preamp	Aux	APos	TPos	Remark																																																																																																				
Freq	Level	Line	Margin	Level	Factor	Loss	Factor	Factor																																																																																																				
MHz	dBuV/m	dBuV/m	dB	dBuV	dB/m	dB	dB	dB																																																																																																				
1	10580.00	47.55	68.20	-20.65	58.68	38.74	15.98	66.30	0.45	--	--	PEAK																																																																																																
2	15870.00	47.95	74.00	-26.05	56.86	37.32	19.64	66.49	0.62	--	--	PEAK																																																																																																



	<b>86</b>	
<b>Mode</b>	<b>Harmonic</b>	
	<b>U-NII-2A_5.25-5.35_802.11ax HE80_CH58_484/66_5290MHz</b>	
<b>ANT</b>	<b>1+2</b>	
<b>Pol.</b>	<b>Horizontal</b>	<b>Vertical</b>
<b>14.47G</b> <b>~14.5G</b> <b>Avg.</b>	<p>Site : 03CH16-HY Condition: AVG_54 3m 91280-1522_240328 HORIZONTAL</p>	<p>Site : 03CH16-HY Condition: AVG_54 3m 91280-1522_240328 VERTICAL</p>
	<b>17.7G</b> <b>~18G</b> <b>Avg.</b>	<p>Site : 03CH16-HY Condition: AVG_54 3m 91280-1522_240328 HORIZONTAL</p>



<b>87</b>																																																					
<b>Mode</b>	<b>Band Edge - L</b>																																																				
<b>U-NII-2C_5.47-5.725_802.11ax HE80_CH106_484/65_5530MHz</b>																																																					
<b>ANT</b>	<b>1+2</b>																																																				
<b>Pol.</b>	<b>Horizontal</b>																																																				
<b>Peak</b>	<p>Site : 03CH16-HY Condition: PEAK_BE(UNII)_B3 3m 91200-1522_240328 HORIZONTAL : RBW:1000.000kHz VBW:3000.000kHz SWT:Auto</p> <table border="1"> <thead> <tr> <th>Peak</th> <th>Freq</th> <th>Level</th> <th>Limit</th> <th>Line Margin</th> <th>Read Level</th> <th>Ant Factor</th> <th>Cable Loss</th> <th>Preamp Loss</th> <th>Aux Factor</th> <th>APos</th> <th>TPos</th> <th>Remark</th> </tr> <tr> <th>1</th> <th>MHz</th> <th>dBuV/m</th> <th>dBuV/m</th> <th>dB</th> <th>dBuV</th> <th>dB/m</th> <th>dB</th> <th>dB</th> <th>dB</th> <th>cm</th> <th>deg</th> <th></th> </tr> </thead> <tbody> <tr> <td>1</td> <td>5451.70</td> <td>55.01</td> <td>74.00</td> <td>-18.99</td> <td>40.10</td> <td>32.80</td> <td>11.47</td> <td>29.36</td> <td>0.00</td> <td>100</td> <td>284</td> <td>PEAK</td> </tr> <tr> <td>2</td> <td>5468.26</td> <td>55.58</td> <td>68.20</td> <td>-12.62</td> <td>40.64</td> <td>32.80</td> <td>11.49</td> <td>29.35</td> <td>0.00</td> <td>100</td> <td>284</td> <td>PEAK</td> </tr> </tbody> </table>	Peak	Freq	Level	Limit	Line Margin	Read Level	Ant Factor	Cable Loss	Preamp Loss	Aux Factor	APos	TPos	Remark	1	MHz	dBuV/m	dBuV/m	dB	dBuV	dB/m	dB	dB	dB	cm	deg		1	5451.70	55.01	74.00	-18.99	40.10	32.80	11.47	29.36	0.00	100	284	PEAK	2	5468.26	55.58	68.20	-12.62	40.64	32.80	11.49	29.35	0.00	100	284	PEAK
	Peak	Freq	Level	Limit	Line Margin	Read Level	Ant Factor	Cable Loss	Preamp Loss	Aux Factor	APos	TPos	Remark																																								
1	MHz	dBuV/m	dBuV/m	dB	dBuV	dB/m	dB	dB	dB	cm	deg																																										
1	5451.70	55.01	74.00	-18.99	40.10	32.80	11.47	29.36	0.00	100	284	PEAK																																									
2	5468.26	55.58	68.20	-12.62	40.64	32.80	11.49	29.35	0.00	100	284	PEAK																																									
<p>Site : 03CH16-HY Condition: PEAK(UNII) 3m 91200-1522_240328 HORIZONTAL : RBW:1000.000kHz VBW:3000.000kHz SWT:Auto</p> <table border="1"> <thead> <tr> <th>Peak</th> <th>Freq</th> <th>Level</th> <th>Limit</th> <th>Line Margin</th> <th>Read Level</th> <th>Ant Factor</th> <th>Cable Loss</th> <th>Preamp Loss</th> <th>Aux Factor</th> <th>APos</th> <th>TPos</th> <th>Remark</th> </tr> <tr> <th>1</th> <th>MHz</th> <th>dBuV/m</th> <th>dBuV/m</th> <th>dB</th> <th>dBuV</th> <th>dB/m</th> <th>dB</th> <th>dB</th> <th>dB</th> <th>cm</th> <th>deg</th> <th></th> </tr> </thead> <tbody> <tr> <td>1</td> <td>5530.00</td> <td>102.24</td> <td>-----</td> <td>-----</td> <td>87.26</td> <td>32.80</td> <td>11.53</td> <td>29.35</td> <td>0.00</td> <td>100</td> <td>284</td> <td>PEAK</td> </tr> </tbody> </table>	Peak	Freq	Level	Limit	Line Margin	Read Level	Ant Factor	Cable Loss	Preamp Loss	Aux Factor	APos	TPos	Remark	1	MHz	dBuV/m	dBuV/m	dB	dBuV	dB/m	dB	dB	dB	cm	deg		1	5530.00	102.24	-----	-----	87.26	32.80	11.53	29.35	0.00	100	284	PEAK														
Peak	Freq	Level	Limit	Line Margin	Read Level	Ant Factor	Cable Loss	Preamp Loss	Aux Factor	APos	TPos	Remark																																									
1	MHz	dBuV/m	dBuV/m	dB	dBuV	dB/m	dB	dB	dB	cm	deg																																										
1	5530.00	102.24	-----	-----	87.26	32.80	11.53	29.35	0.00	100	284	PEAK																																									
<b>Avg.</b>	<p>Site : 03CH16-HY Condition: AVG_BE(UNII)_B3 3m 91200-1522_240328 HORIZONTAL : RBW:1000.000kHz VBW:0.010kHz SWT:Auto</p> <table border="1"> <thead> <tr> <th>Avg</th> <th>Freq</th> <th>Level</th> <th>Limit</th> <th>Line Margin</th> <th>Read Level</th> <th>Ant Factor</th> <th>Cable Loss</th> <th>Preamp Loss</th> <th>Aux Factor</th> <th>APos</th> <th>TPos</th> <th>Remark</th> </tr> <tr> <th>1</th> <th>MHz</th> <th>dBuV/m</th> <th>dBuV/m</th> <th>dB</th> <th>dBuV</th> <th>dB/m</th> <th>dB</th> <th>dB</th> <th>dB</th> <th>cm</th> <th>deg</th> <th></th> </tr> </thead> <tbody> <tr> <td>1</td> <td>5459.26</td> <td>44.67</td> <td>54.00</td> <td>-9.33</td> <td>29.74</td> <td>32.80</td> <td>11.48</td> <td>29.35</td> <td>0.00</td> <td>100</td> <td>284</td> <td>AVERAGE</td> </tr> </tbody> </table>	Avg	Freq	Level	Limit	Line Margin	Read Level	Ant Factor	Cable Loss	Preamp Loss	Aux Factor	APos	TPos	Remark	1	MHz	dBuV/m	dBuV/m	dB	dBuV	dB/m	dB	dB	dB	cm	deg		1	5459.26	44.67	54.00	-9.33	29.74	32.80	11.48	29.35	0.00	100	284	AVERAGE													
	Avg	Freq	Level	Limit	Line Margin	Read Level	Ant Factor	Cable Loss	Preamp Loss	Aux Factor	APos	TPos	Remark																																								
1	MHz	dBuV/m	dBuV/m	dB	dBuV	dB/m	dB	dB	dB	cm	deg																																										
1	5459.26	44.67	54.00	-9.33	29.74	32.80	11.48	29.35	0.00	100	284	AVERAGE																																									
<p>Site : 03CH16-HY Condition: AVG_54 3m 91200-1522_240328 HORIZONTAL : RBW:1000.000kHz VBW:0.010kHz SWT:Auto</p> <table border="1"> <thead> <tr> <th>Avg</th> <th>Freq</th> <th>Level</th> <th>Limit</th> <th>Line Margin</th> <th>Read Level</th> <th>Ant Factor</th> <th>Cable Loss</th> <th>Preamp Loss</th> <th>Aux Factor</th> <th>APos</th> <th>TPos</th> <th>Remark</th> </tr> <tr> <th>1</th> <th>MHz</th> <th>dBuV/m</th> <th>dBuV/m</th> <th>dB</th> <th>dBuV</th> <th>dB/m</th> <th>dB</th> <th>dB</th> <th>dB</th> <th>cm</th> <th>deg</th> <th></th> </tr> </thead> <tbody> <tr> <td>1</td> <td>5530.00</td> <td>94.47</td> <td>-----</td> <td>-----</td> <td>79.48</td> <td>32.80</td> <td>11.54</td> <td>29.35</td> <td>0.00</td> <td>100</td> <td>284</td> <td>AVERAGE</td> </tr> </tbody> </table>	Avg	Freq	Level	Limit	Line Margin	Read Level	Ant Factor	Cable Loss	Preamp Loss	Aux Factor	APos	TPos	Remark	1	MHz	dBuV/m	dBuV/m	dB	dBuV	dB/m	dB	dB	dB	cm	deg		1	5530.00	94.47	-----	-----	79.48	32.80	11.54	29.35	0.00	100	284	AVERAGE														
Avg	Freq	Level	Limit	Line Margin	Read Level	Ant Factor	Cable Loss	Preamp Loss	Aux Factor	APos	TPos	Remark																																									
1	MHz	dBuV/m	dBuV/m	dB	dBuV	dB/m	dB	dB	dB	cm	deg																																										
1	5530.00	94.47	-----	-----	79.48	32.80	11.54	29.35	0.00	100	284	AVERAGE																																									



Mode	87																																							
	Band Edge - R																																							
	U-NII-2C_5.47-5.725_802.11ax HE80_CH106_484/65_5530MHz																																							
ANT	1+2																																							
Pol.	Horizontal	Fundamental																																						
Peak	<p>Site : 03CH16-HY          Condition: PEAK_BE(UNII)_B3 3m 91200-1522_240328 HORIZONTAL          : RBW:1000.000kHz VBW:3000.000kHz SMT:Auto</p> <table border="1"> <thead> <tr> <th>Limit</th> <th>Read</th> <th>Ant</th> <th>Cable</th> <th>Preamp</th> <th>Aux</th> <th>APos</th> <th>TPos</th> <th></th> </tr> <tr> <th>Freq</th> <th>Level</th> <th>Line Margin</th> <th>Level</th> <th>Factor</th> <th>Loss Factor</th> <th>Factor</th> <th></th> <th>Remark</th> </tr> <tr> <th>MHz</th> <th>dBuV/m</th> <th>dBuV/m</th> <th>dB</th> <th>dBuV</th> <th>dB/m</th> <th>dB</th> <th>dB</th> <th>cm</th> <th>deg</th> </tr> </thead> <tbody> <tr> <td>1 5731.63</td> <td>56.27</td> <td>68.20 -11.93</td> <td>40.42</td> <td>33.46</td> <td>11.79</td> <td>29.40</td> <td>0.00</td> <td>100</td> <td>284 PEAK</td> </tr> </tbody> </table>	Limit	Read	Ant	Cable	Preamp	Aux	APos	TPos		Freq	Level	Line Margin	Level	Factor	Loss Factor	Factor		Remark	MHz	dBuV/m	dBuV/m	dB	dBuV	dB/m	dB	dB	cm	deg	1 5731.63	56.27	68.20 -11.93	40.42	33.46	11.79	29.40	0.00	100	284 PEAK	Blank
Limit	Read	Ant	Cable	Preamp	Aux	APos	TPos																																	
Freq	Level	Line Margin	Level	Factor	Loss Factor	Factor		Remark																																
MHz	dBuV/m	dBuV/m	dB	dBuV	dB/m	dB	dB	cm	deg																															
1 5731.63	56.27	68.20 -11.93	40.42	33.46	11.79	29.40	0.00	100	284 PEAK																															



<b>87</b>																																								
<b>Mode</b>	<b>Band Edge - L</b>																																							
<b>U-NII-2C_5.47-5.725_802.11ax HE80_CH106_484/65_5530MHz</b>																																								
<b>ANT</b>	<b>1+2</b>																																							
<b>Pol.</b>	<b>Vertical</b>																																							
<b>Peak</b>	<p>Site : 03CH16-HY Condition: PEAK_BE(UNII)_B3 3m 91200-1522_240328 VERTICAL : RBW:1000.000kHz VBW:3000.000kHz SWT:Auto</p> <table border="1"> <thead> <tr> <th>Peak</th> <th>Freq (MHz)</th> <th>Level (dBuV/m)</th> <th>Limit (dBuV/m)</th> <th>Line Margin (dB)</th> <th>Read Level (dBuV/m)</th> <th>Ant Factor (dB/m)</th> <th>Cable Loss (dB)</th> <th>Preamp Loss (dB)</th> <th>Aux Factor (dB)</th> <th>APos (cm)</th> <th>TPos (deg)</th> <th>Remark</th> </tr> </thead> <tbody> <tr> <td>1</td> <td>5448.54</td> <td>54.45</td> <td>74.00</td> <td>-19.55</td> <td>39.55</td> <td>32.80</td> <td>11.46</td> <td>29.36</td> <td>0.00</td> <td>200</td> <td>266</td> <td>PEAK</td> </tr> <tr> <td>2</td> <td>5465.56</td> <td>54.05</td> <td>68.20</td> <td>-14.15</td> <td>39.11</td> <td>32.80</td> <td>11.49</td> <td>29.35</td> <td>0.00</td> <td>200</td> <td>266</td> <td>PEAK</td> </tr> </tbody> </table>	Peak	Freq (MHz)	Level (dBuV/m)	Limit (dBuV/m)	Line Margin (dB)	Read Level (dBuV/m)	Ant Factor (dB/m)	Cable Loss (dB)	Preamp Loss (dB)	Aux Factor (dB)	APos (cm)	TPos (deg)	Remark	1	5448.54	54.45	74.00	-19.55	39.55	32.80	11.46	29.36	0.00	200	266	PEAK	2	5465.56	54.05	68.20	-14.15	39.11	32.80	11.49	29.35	0.00	200	266	PEAK
	Peak	Freq (MHz)	Level (dBuV/m)	Limit (dBuV/m)	Line Margin (dB)	Read Level (dBuV/m)	Ant Factor (dB/m)	Cable Loss (dB)	Preamp Loss (dB)	Aux Factor (dB)	APos (cm)	TPos (deg)	Remark																											
1	5448.54	54.45	74.00	-19.55	39.55	32.80	11.46	29.36	0.00	200	266	PEAK																												
2	5465.56	54.05	68.20	-14.15	39.11	32.80	11.49	29.35	0.00	200	266	PEAK																												
<p>Site : 03CH16-HY Condition: PEAK(UNII) 3m 91200-1522_240328 VERTICAL : RBW:1000.000kHz VBW:3000.000kHz SWT:Auto</p> <table border="1"> <thead> <tr> <th>Peak</th> <th>Freq (MHz)</th> <th>Level (dBuV/m)</th> <th>Limit (dBuV/m)</th> <th>Line Margin (dB)</th> <th>Read Level (dBuV/m)</th> <th>Ant Factor (dB/m)</th> <th>Cable Loss (dB)</th> <th>Preamp Loss (dB)</th> <th>Aux Factor (dB)</th> <th>APos (cm)</th> <th>TPos (deg)</th> <th>Remark</th> </tr> </thead> <tbody> <tr> <td>1</td> <td>5530.00</td> <td>104.35</td> <td>70.00</td> <td>34.35</td> <td>89.36</td> <td>32.80</td> <td>11.54</td> <td>29.35</td> <td>0.00</td> <td>200</td> <td>266</td> <td>PEAK</td> </tr> </tbody> </table>	Peak	Freq (MHz)	Level (dBuV/m)	Limit (dBuV/m)	Line Margin (dB)	Read Level (dBuV/m)	Ant Factor (dB/m)	Cable Loss (dB)	Preamp Loss (dB)	Aux Factor (dB)	APos (cm)	TPos (deg)	Remark	1	5530.00	104.35	70.00	34.35	89.36	32.80	11.54	29.35	0.00	200	266	PEAK														
Peak	Freq (MHz)	Level (dBuV/m)	Limit (dBuV/m)	Line Margin (dB)	Read Level (dBuV/m)	Ant Factor (dB/m)	Cable Loss (dB)	Preamp Loss (dB)	Aux Factor (dB)	APos (cm)	TPos (deg)	Remark																												
1	5530.00	104.35	70.00	34.35	89.36	32.80	11.54	29.35	0.00	200	266	PEAK																												
<b>Avg.</b>	<p>Site : 03CH16-HY Condition: AVG_BE(UNII)_B3 3m 91200-1522_240328 VERTICAL : RBW:1000.000kHz VBW:0.010kHz SWT:Auto</p> <table border="1"> <thead> <tr> <th>Peak</th> <th>Freq (MHz)</th> <th>Level (dBuV/m)</th> <th>Limit (dBuV/m)</th> <th>Line Margin (dB)</th> <th>Read Level (dBuV/m)</th> <th>Ant Factor (dB/m)</th> <th>Cable Loss (dB)</th> <th>Preamp Loss (dB)</th> <th>Aux Factor (dB)</th> <th>APos (cm)</th> <th>TPos (deg)</th> <th>Remark</th> </tr> </thead> <tbody> <tr> <td>1</td> <td>5459.00</td> <td>44.79</td> <td>54.00</td> <td>-9.21</td> <td>29.06</td> <td>32.80</td> <td>11.48</td> <td>29.35</td> <td>0.00</td> <td>200</td> <td>266</td> <td>AVERAGE</td> </tr> </tbody> </table>	Peak	Freq (MHz)	Level (dBuV/m)	Limit (dBuV/m)	Line Margin (dB)	Read Level (dBuV/m)	Ant Factor (dB/m)	Cable Loss (dB)	Preamp Loss (dB)	Aux Factor (dB)	APos (cm)	TPos (deg)	Remark	1	5459.00	44.79	54.00	-9.21	29.06	32.80	11.48	29.35	0.00	200	266	AVERAGE													
	Peak	Freq (MHz)	Level (dBuV/m)	Limit (dBuV/m)	Line Margin (dB)	Read Level (dBuV/m)	Ant Factor (dB/m)	Cable Loss (dB)	Preamp Loss (dB)	Aux Factor (dB)	APos (cm)	TPos (deg)	Remark																											
1	5459.00	44.79	54.00	-9.21	29.06	32.80	11.48	29.35	0.00	200	266	AVERAGE																												
<p>Site : 03CH16-HY Condition: AVG_54 3m 91200-1522_240328 VERTICAL : RBW:1000.000kHz VBW:0.010kHz SWT:Auto</p> <table border="1"> <thead> <tr> <th>Peak</th> <th>Freq (MHz)</th> <th>Level (dBuV/m)</th> <th>Limit (dBuV/m)</th> <th>Line Margin (dB)</th> <th>Read Level (dBuV/m)</th> <th>Ant Factor (dB/m)</th> <th>Cable Loss (dB)</th> <th>Preamp Loss (dB)</th> <th>Aux Factor (dB)</th> <th>APos (cm)</th> <th>TPos (deg)</th> <th>Remark</th> </tr> </thead> <tbody> <tr> <td>1</td> <td>5530.00</td> <td>96.62</td> <td>52.50</td> <td>44.12</td> <td>81.63</td> <td>32.80</td> <td>11.54</td> <td>29.35</td> <td>0.00</td> <td>200</td> <td>266</td> <td>AVERAGE</td> </tr> </tbody> </table>	Peak	Freq (MHz)	Level (dBuV/m)	Limit (dBuV/m)	Line Margin (dB)	Read Level (dBuV/m)	Ant Factor (dB/m)	Cable Loss (dB)	Preamp Loss (dB)	Aux Factor (dB)	APos (cm)	TPos (deg)	Remark	1	5530.00	96.62	52.50	44.12	81.63	32.80	11.54	29.35	0.00	200	266	AVERAGE														
Peak	Freq (MHz)	Level (dBuV/m)	Limit (dBuV/m)	Line Margin (dB)	Read Level (dBuV/m)	Ant Factor (dB/m)	Cable Loss (dB)	Preamp Loss (dB)	Aux Factor (dB)	APos (cm)	TPos (deg)	Remark																												
1	5530.00	96.62	52.50	44.12	81.63	32.80	11.54	29.35	0.00	200	266	AVERAGE																												



Mode	87																																									
	Band Edge - R																																									
	U-NII-2C_5.47-5.725_802.11ax HE80_CH106_484/65_5530MHz																																									
ANT	1+2																																									
Pol.	Vertical	Fundamental																																								
Peak	<p>Site : 03CH16-HY            Condition: PEAK_BE(UNII)_B3 3m 91200-1522_240328 VERTICAL            : RBW:1000.000kHz VBW:3000.000kHz SMT:Auto</p> <table border="1"> <thead> <tr> <th>Limit</th> <th>Read</th> <th>Ant</th> <th>Cable</th> <th>Preamp</th> <th>Aux</th> <th>APos</th> <th>TPos</th> <th>Remark</th> </tr> <tr> <th>Freq</th> <th>Level</th> <th>Line Margin</th> <th>Level</th> <th>Factor</th> <th>Loss Factor</th> <th>Factor</th> <th></th> <th></th> </tr> <tr> <th>MHz</th> <th>dBuV/m</th> <th>dBuV/m</th> <th>dB</th> <th>dBuV</th> <th>dB/m</th> <th>dB</th> <th>dB</th> <th>cm</th> <th>deg</th> </tr> </thead> <tbody> <tr> <td>1 5737.98</td> <td>55.63</td> <td>68.20</td> <td>-12.57</td> <td>39.76</td> <td>33.48</td> <td>11.79</td> <td>29.40</td> <td>0.00</td> <td>200</td> <td>266</td> <td>PEAK</td> </tr> </tbody> </table>	Limit	Read	Ant	Cable	Preamp	Aux	APos	TPos	Remark	Freq	Level	Line Margin	Level	Factor	Loss Factor	Factor			MHz	dBuV/m	dBuV/m	dB	dBuV	dB/m	dB	dB	cm	deg	1 5737.98	55.63	68.20	-12.57	39.76	33.48	11.79	29.40	0.00	200	266	PEAK	Blank
Limit	Read	Ant	Cable	Preamp	Aux	APos	TPos	Remark																																		
Freq	Level	Line Margin	Level	Factor	Loss Factor	Factor																																				
MHz	dBuV/m	dBuV/m	dB	dBuV	dB/m	dB	dB	cm	deg																																	
1 5737.98	55.63	68.20	-12.57	39.76	33.48	11.79	29.40	0.00	200	266	PEAK																															





Mode	87																																																																																																													
	Harmonic																																																																																																													
	U-NII-2C_5.47-5.725_802.11ax HE80_CH106_484/65_5530MHz																																																																																																													
ANT	1+2																																																																																																													
Pol.	Horizontal	Vertical																																																																																																												
Peak Avg.	<p>Site : 03CH16-HY Condition: PEAK(UNII) 3m 91200-1522_240328 HORIZONTAL</p> <table border="1"> <thead> <tr> <th>Limit</th> <th>Read</th> <th>Ant</th> <th>Cable</th> <th>Preamp</th> <th>Aux</th> <th>APos</th> <th>TPos</th> <th>Remark</th> </tr> <tr> <th>Freq</th> <th>Level</th> <th>Line Margin</th> <th>Level</th> <th>Factor</th> <th>Loss Factor</th> <th>Factor</th> <th></th> <th></th> </tr> <tr> <th>MHz</th> <th>dBuV/m</th> <th>dBuV/m</th> <th>dB</th> <th>dBuV</th> <th>dB/m</th> <th>dB</th> <th>dB</th> <th>cm</th> <th>deg</th> </tr> </thead> <tbody> <tr> <td>1</td> <td>11060.00</td> <td>46.30</td> <td>74.00</td> <td>-27.70</td> <td>56.47</td> <td>38.70</td> <td>16.35</td> <td>65.66</td> <td>0.44</td> <td>--</td> <td>--</td> <td>PEAK</td> </tr> <tr> <td>2</td> <td>16590.00</td> <td>48.92</td> <td>68.20</td> <td>-19.28</td> <td>56.83</td> <td>37.90</td> <td>20.29</td> <td>66.73</td> <td>0.63</td> <td>--</td> <td>--</td> <td>PEAK</td> </tr> </tbody> </table>	Limit	Read	Ant	Cable	Preamp	Aux	APos	TPos	Remark	Freq	Level	Line Margin	Level	Factor	Loss Factor	Factor			MHz	dBuV/m	dBuV/m	dB	dBuV	dB/m	dB	dB	cm	deg	1	11060.00	46.30	74.00	-27.70	56.47	38.70	16.35	65.66	0.44	--	--	PEAK	2	16590.00	48.92	68.20	-19.28	56.83	37.90	20.29	66.73	0.63	--	--	PEAK	<p>Site : 03CH16-HY Condition: PEAK(UNII) 3m 91200-1522_240328 VERTICAL</p> <table border="1"> <thead> <tr> <th>Limit</th> <th>Read</th> <th>Ant</th> <th>Cable</th> <th>Preamp</th> <th>Aux</th> <th>APos</th> <th>TPos</th> <th>Remark</th> </tr> <tr> <th>Freq</th> <th>Level</th> <th>Line Margin</th> <th>Level</th> <th>Factor</th> <th>Loss Factor</th> <th>Factor</th> <th></th> <th></th> </tr> <tr> <th>MHz</th> <th>dBuV/m</th> <th>dBuV/m</th> <th>dB</th> <th>dBuV</th> <th>dB/m</th> <th>dB</th> <th>dB</th> <th>cm</th> <th>deg</th> </tr> </thead> <tbody> <tr> <td>1</td> <td>11060.00</td> <td>46.25</td> <td>74.00</td> <td>-27.75</td> <td>56.42</td> <td>38.70</td> <td>16.35</td> <td>65.66</td> <td>0.44</td> <td>--</td> <td>--</td> <td>PEAK</td> </tr> <tr> <td>2</td> <td>16590.00</td> <td>49.62</td> <td>68.20</td> <td>-18.58</td> <td>57.53</td> <td>37.90</td> <td>20.29</td> <td>66.73</td> <td>0.63</td> <td>--</td> <td>--</td> <td>PEAK</td> </tr> </tbody> </table>	Limit	Read	Ant	Cable	Preamp	Aux	APos	TPos	Remark	Freq	Level	Line Margin	Level	Factor	Loss Factor	Factor			MHz	dBuV/m	dBuV/m	dB	dBuV	dB/m	dB	dB	cm	deg	1	11060.00	46.25	74.00	-27.75	56.42	38.70	16.35	65.66	0.44	--	--	PEAK	2	16590.00	49.62	68.20	-18.58	57.53	37.90	20.29	66.73	0.63	--	--	PEAK
	Limit	Read	Ant	Cable	Preamp	Aux	APos	TPos	Remark																																																																																																					
Freq	Level	Line Margin	Level	Factor	Loss Factor	Factor																																																																																																								
MHz	dBuV/m	dBuV/m	dB	dBuV	dB/m	dB	dB	cm	deg																																																																																																					
1	11060.00	46.30	74.00	-27.70	56.47	38.70	16.35	65.66	0.44	--	--	PEAK																																																																																																		
2	16590.00	48.92	68.20	-19.28	56.83	37.90	20.29	66.73	0.63	--	--	PEAK																																																																																																		
Limit	Read	Ant	Cable	Preamp	Aux	APos	TPos	Remark																																																																																																						
Freq	Level	Line Margin	Level	Factor	Loss Factor	Factor																																																																																																								
MHz	dBuV/m	dBuV/m	dB	dBuV	dB/m	dB	dB	cm	deg																																																																																																					
1	11060.00	46.25	74.00	-27.75	56.42	38.70	16.35	65.66	0.44	--	--	PEAK																																																																																																		
2	16590.00	49.62	68.20	-18.58	57.53	37.90	20.29	66.73	0.63	--	--	PEAK																																																																																																		



	<b>87</b>	
<b>Mode</b>	<b>Harmonic</b>	
	<b>U-NII-2C_5.47-5.725_802.11ax HE80_CH106_484/65_5530MHz</b>	
<b>ANT</b>	<b>1+2</b>	
<b>Pol.</b>	<b>Horizontal</b>	<b>Vertical</b>
<b>14.47G</b> <b>~14.5G</b> <b>Avg.</b>	<p>Site : 03CH16-HY Condition: AVG_54 3m 91280-1522_240328 HORIZONTAL</p>	<p>Site : 03CH16-HY Condition: AVG_54 3m 91280-1522_240328 VERTICAL</p>
	<p>Site : 03CH16-HY Condition: AVG_54 3m 91280-1522_240328 HORIZONTAL</p>	<p>Site : 03CH16-HY Condition: AVG_54 3m 91280-1522_240328 VERTICAL</p>



Mode	90																																																																																																																																																																																							
	LF																																																																																																																																																																																							
	U-NII-1_5.15-5.25_802.11ax HE80_CH42_484/65_5210MHz																																																																																																																																																																																							
ANT	1+2																																																																																																																																																																																							
Pol.	Horizontal	Vertical																																																																																																																																																																																						
QP/ Peak	<p>Site : 03CH16-HY Condition: QP 3m CBL6111D00002N1D01N-06_47020 &amp; 06 HORIZONTAL</p> <table border="1"> <thead> <tr> <th>Peak</th> <th>Freq (MHz)</th> <th>Level (dBuV/m)</th> <th>Limit (dBuV/m)</th> <th>Line Margin (dB)</th> <th>Read Level (dBuV)</th> <th>Ant Factor (dB/m)</th> <th>Cable Loss (dB)</th> <th>Preamp Factor (dB)</th> <th>Aux Factor (dB)</th> <th>APos (cm)</th> <th>TPos (deg)</th> <th>Remark</th> </tr> </thead> <tbody> <tr><td>1</td><td>57.16</td><td>23.01</td><td>40.00</td><td>-16.99</td><td>41.95</td><td>12.12</td><td>1.18</td><td>32.30</td><td>0.06</td><td>--</td><td>--</td><td>Peak</td></tr> <tr><td>2</td><td>166.77</td><td>30.55</td><td>43.50</td><td>-12.95</td><td>44.87</td><td>15.94</td><td>2.01</td><td>32.36</td><td>0.09</td><td>--</td><td>--</td><td>Peak</td></tr> <tr><td>3</td><td>254.07</td><td>30.10</td><td>46.00</td><td>-15.90</td><td>40.94</td><td>19.04</td><td>2.47</td><td>32.40</td><td>0.05</td><td>--</td><td>--</td><td>Peak</td></tr> <tr><td>4</td><td>453.89</td><td>36.92</td><td>46.00</td><td>-9.08</td><td>42.94</td><td>23.12</td><td>3.32</td><td>32.57</td><td>0.11</td><td>--</td><td>--</td><td>Peak</td></tr> <tr><td>5</td><td>531.49</td><td>31.99</td><td>46.00</td><td>-14.01</td><td>37.25</td><td>24.05</td><td>3.59</td><td>33.02</td><td>0.12</td><td>--</td><td>--</td><td>Peak</td></tr> <tr><td>6</td><td>933.07</td><td>35.17</td><td>46.00</td><td>-10.83</td><td>31.98</td><td>30.09</td><td>4.76</td><td>31.93</td><td>0.27</td><td>--</td><td>--</td><td>Peak</td></tr> </tbody> </table>	Peak	Freq (MHz)	Level (dBuV/m)	Limit (dBuV/m)	Line Margin (dB)	Read Level (dBuV)	Ant Factor (dB/m)	Cable Loss (dB)	Preamp Factor (dB)	Aux Factor (dB)	APos (cm)	TPos (deg)	Remark	1	57.16	23.01	40.00	-16.99	41.95	12.12	1.18	32.30	0.06	--	--	Peak	2	166.77	30.55	43.50	-12.95	44.87	15.94	2.01	32.36	0.09	--	--	Peak	3	254.07	30.10	46.00	-15.90	40.94	19.04	2.47	32.40	0.05	--	--	Peak	4	453.89	36.92	46.00	-9.08	42.94	23.12	3.32	32.57	0.11	--	--	Peak	5	531.49	31.99	46.00	-14.01	37.25	24.05	3.59	33.02	0.12	--	--	Peak	6	933.07	35.17	46.00	-10.83	31.98	30.09	4.76	31.93	0.27	--	--	Peak	<p>Site : 03CH16-HY Condition: QP 3m CBL6111D00002N1D01N-06_47020 &amp; 06 VERTICAL</p> <table border="1"> <thead> <tr> <th>Peak</th> <th>Freq (MHz)</th> <th>Level (dBuV/m)</th> <th>Limit (dBuV/m)</th> <th>Line Margin (dB)</th> <th>Read Level (dBuV)</th> <th>Ant Factor (dB/m)</th> <th>Cable Loss (dB)</th> <th>Preamp Factor (dB)</th> <th>Aux Factor (dB)</th> <th>APos (cm)</th> <th>TPos (deg)</th> <th>Remark</th> </tr> </thead> <tbody> <tr><td>1</td><td>58.13</td><td>33.37</td><td>40.00</td><td>-6.63</td><td>52.43</td><td>11.98</td><td>1.19</td><td>32.29</td><td>0.06</td><td>--</td><td>--</td><td>Peak</td></tr> <tr><td>2</td><td>95.96</td><td>31.95</td><td>43.50</td><td>-11.55</td><td>47.48</td><td>15.45</td><td>1.51</td><td>32.53</td><td>0.04</td><td>--</td><td>--</td><td>Peak</td></tr> <tr><td>3</td><td>247.28</td><td>28.70</td><td>46.00</td><td>-17.30</td><td>40.50</td><td>18.15</td><td>2.44</td><td>32.43</td><td>0.04</td><td>--</td><td>--</td><td>Peak</td></tr> <tr><td>4</td><td>462.62</td><td>36.61</td><td>46.00</td><td>-9.39</td><td>42.48</td><td>23.29</td><td>3.35</td><td>32.62</td><td>0.11</td><td>--</td><td>--</td><td>Peak</td></tr> <tr><td>5</td><td>531.49</td><td>33.16</td><td>46.00</td><td>-12.84</td><td>38.42</td><td>24.05</td><td>3.59</td><td>33.02</td><td>0.12</td><td>--</td><td>--</td><td>Peak</td></tr> <tr><td>6</td><td>938.89</td><td>34.12</td><td>46.00</td><td>-11.88</td><td>30.57</td><td>30.36</td><td>4.78</td><td>31.87</td><td>0.28</td><td>--</td><td>--</td><td>Peak</td></tr> </tbody> </table>	Peak	Freq (MHz)	Level (dBuV/m)	Limit (dBuV/m)	Line Margin (dB)	Read Level (dBuV)	Ant Factor (dB/m)	Cable Loss (dB)	Preamp Factor (dB)	Aux Factor (dB)	APos (cm)	TPos (deg)	Remark	1	58.13	33.37	40.00	-6.63	52.43	11.98	1.19	32.29	0.06	--	--	Peak	2	95.96	31.95	43.50	-11.55	47.48	15.45	1.51	32.53	0.04	--	--	Peak	3	247.28	28.70	46.00	-17.30	40.50	18.15	2.44	32.43	0.04	--	--	Peak	4	462.62	36.61	46.00	-9.39	42.48	23.29	3.35	32.62	0.11	--	--	Peak	5	531.49	33.16	46.00	-12.84	38.42	24.05	3.59	33.02	0.12	--	--	Peak	6	938.89	34.12	46.00	-11.88	30.57	30.36	4.78	31.87	0.28	--	--	Peak
Peak	Freq (MHz)	Level (dBuV/m)	Limit (dBuV/m)	Line Margin (dB)	Read Level (dBuV)	Ant Factor (dB/m)	Cable Loss (dB)	Preamp Factor (dB)	Aux Factor (dB)	APos (cm)	TPos (deg)	Remark																																																																																																																																																																												
1	57.16	23.01	40.00	-16.99	41.95	12.12	1.18	32.30	0.06	--	--	Peak																																																																																																																																																																												
2	166.77	30.55	43.50	-12.95	44.87	15.94	2.01	32.36	0.09	--	--	Peak																																																																																																																																																																												
3	254.07	30.10	46.00	-15.90	40.94	19.04	2.47	32.40	0.05	--	--	Peak																																																																																																																																																																												
4	453.89	36.92	46.00	-9.08	42.94	23.12	3.32	32.57	0.11	--	--	Peak																																																																																																																																																																												
5	531.49	31.99	46.00	-14.01	37.25	24.05	3.59	33.02	0.12	--	--	Peak																																																																																																																																																																												
6	933.07	35.17	46.00	-10.83	31.98	30.09	4.76	31.93	0.27	--	--	Peak																																																																																																																																																																												
Peak	Freq (MHz)	Level (dBuV/m)	Limit (dBuV/m)	Line Margin (dB)	Read Level (dBuV)	Ant Factor (dB/m)	Cable Loss (dB)	Preamp Factor (dB)	Aux Factor (dB)	APos (cm)	TPos (deg)	Remark																																																																																																																																																																												
1	58.13	33.37	40.00	-6.63	52.43	11.98	1.19	32.29	0.06	--	--	Peak																																																																																																																																																																												
2	95.96	31.95	43.50	-11.55	47.48	15.45	1.51	32.53	0.04	--	--	Peak																																																																																																																																																																												
3	247.28	28.70	46.00	-17.30	40.50	18.15	2.44	32.43	0.04	--	--	Peak																																																																																																																																																																												
4	462.62	36.61	46.00	-9.39	42.48	23.29	3.35	32.62	0.11	--	--	Peak																																																																																																																																																																												
5	531.49	33.16	46.00	-12.84	38.42	24.05	3.59	33.02	0.12	--	--	Peak																																																																																																																																																																												
6	938.89	34.12	46.00	-11.88	30.57	30.36	4.78	31.87	0.28	--	--	Peak																																																																																																																																																																												



Mode	91																																																																																																
	SHF																																																																																																
	U-NII-1_5.15-5.25_802.11ax HE80_CH42_484/65_5210MHz																																																																																																
ANT	1+2																																																																																																
Pol.	Horizontal	Vertical																																																																																															
Peak	<p>Site : 03CH16-HY Condition: PEAK(UNII) 1m SHF_00993_231124 HORIZONTAL</p> <table border="1"> <thead> <tr> <th>Limit</th> <th>Read</th> <th>Ant</th> <th>Cable</th> <th>Preamp</th> <th>Aux</th> <th>APos</th> <th>TPos</th> <th></th> </tr> <tr> <th>Freq</th> <th>Level</th> <th>Line Margin</th> <th>Level</th> <th>Factor</th> <th>Loss Factor</th> <th>Factor</th> <th></th> <th>Remark</th> </tr> <tr> <th>MHz</th> <th>dBuV/m</th> <th>dBuV/m</th> <th>dB</th> <th>dBuV</th> <th>dB/m</th> <th>dB</th> <th>dB</th> <th>cm</th> <th>deg</th> </tr> </thead> <tbody> <tr> <td>1</td> <td>39197.00</td> <td>47.65</td> <td>74.00</td> <td>-26.35</td> <td>59.51</td> <td>44.96</td> <td>9.10</td> <td>56.38</td> <td>-9.54</td> <td>100</td> <td>300</td> <td>Peak</td> </tr> </tbody> </table>	Limit	Read	Ant	Cable	Preamp	Aux	APos	TPos		Freq	Level	Line Margin	Level	Factor	Loss Factor	Factor		Remark	MHz	dBuV/m	dBuV/m	dB	dBuV	dB/m	dB	dB	cm	deg	1	39197.00	47.65	74.00	-26.35	59.51	44.96	9.10	56.38	-9.54	100	300	Peak	<p>Site : 03CH16-HY Condition: PEAK(UNII) 1m SHF_00993_231124 VERTICAL</p> <table border="1"> <thead> <tr> <th>Limit</th> <th>Read</th> <th>Ant</th> <th>Cable</th> <th>Preamp</th> <th>Aux</th> <th>APos</th> <th>TPos</th> <th></th> </tr> <tr> <th>Freq</th> <th>Level</th> <th>Line Margin</th> <th>Level</th> <th>Factor</th> <th>Loss Factor</th> <th>Factor</th> <th></th> <th>Remark</th> </tr> <tr> <th>MHz</th> <th>dBuV/m</th> <th>dBuV/m</th> <th>dB</th> <th>dBuV</th> <th>dB/m</th> <th>dB</th> <th>dB</th> <th>cm</th> <th>deg</th> </tr> </thead> <tbody> <tr> <td>1</td> <td>20838.00</td> <td>42.49</td> <td>74.00</td> <td>-31.51</td> <td>62.84</td> <td>37.88</td> <td>6.17</td> <td>54.86</td> <td>-9.54</td> <td>100</td> <td>189</td> <td>PEAK</td> </tr> <tr> <td>2</td> <td>20838.00</td> <td>36.04</td> <td>54.00</td> <td>-17.96</td> <td>56.39</td> <td>37.88</td> <td>6.17</td> <td>54.86</td> <td>-9.54</td> <td>100</td> <td>189</td> <td>AVERAGE</td> </tr> </tbody> </table>	Limit	Read	Ant	Cable	Preamp	Aux	APos	TPos		Freq	Level	Line Margin	Level	Factor	Loss Factor	Factor		Remark	MHz	dBuV/m	dBuV/m	dB	dBuV	dB/m	dB	dB	cm	deg	1	20838.00	42.49	74.00	-31.51	62.84	37.88	6.17	54.86	-9.54	100	189	PEAK	2	20838.00	36.04	54.00	-17.96	56.39	37.88	6.17	54.86	-9.54	100	189	AVERAGE
	Limit	Read	Ant	Cable	Preamp	Aux	APos	TPos																																																																																									
Freq	Level	Line Margin	Level	Factor	Loss Factor	Factor		Remark																																																																																									
MHz	dBuV/m	dBuV/m	dB	dBuV	dB/m	dB	dB	cm	deg																																																																																								
1	39197.00	47.65	74.00	-26.35	59.51	44.96	9.10	56.38	-9.54	100	300	Peak																																																																																					
Limit	Read	Ant	Cable	Preamp	Aux	APos	TPos																																																																																										
Freq	Level	Line Margin	Level	Factor	Loss Factor	Factor		Remark																																																																																									
MHz	dBuV/m	dBuV/m	dB	dBuV	dB/m	dB	dB	cm	deg																																																																																								
1	20838.00	42.49	74.00	-31.51	62.84	37.88	6.17	54.86	-9.54	100	189	PEAK																																																																																					
2	20838.00	36.04	54.00	-17.96	56.39	37.88	6.17	54.86	-9.54	100	189	AVERAGE																																																																																					



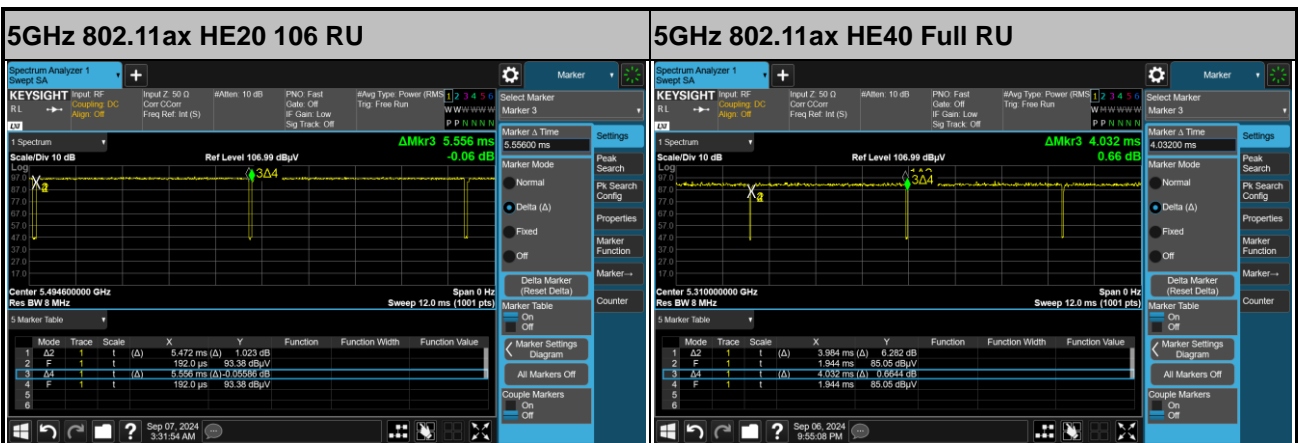
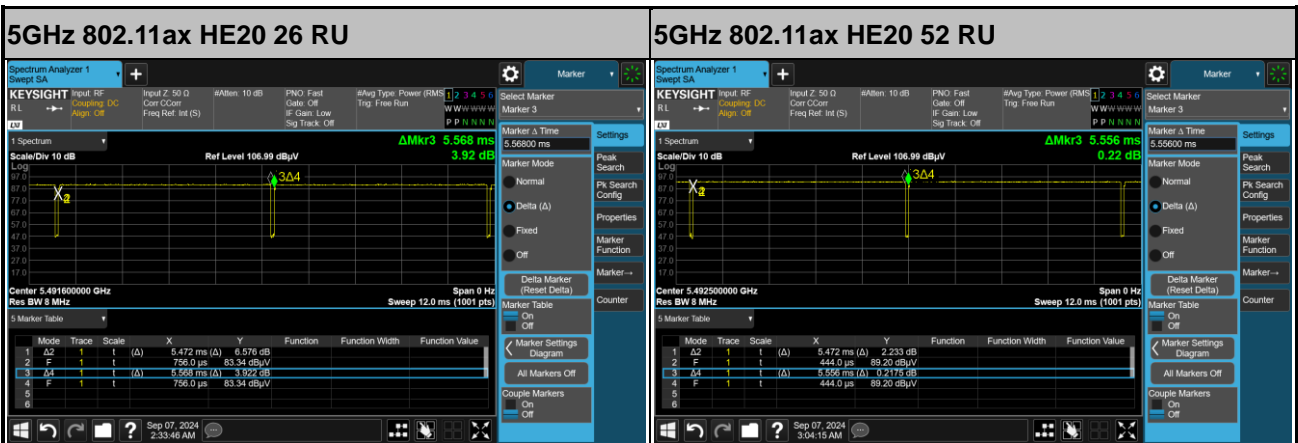
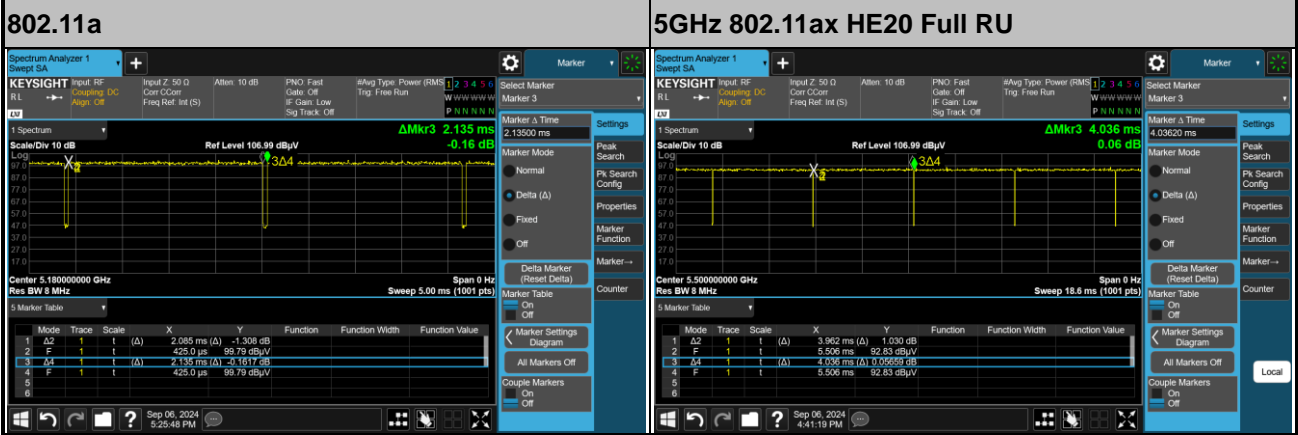
## Appendix D. Duty Cycle Plots

<Ant. 1>

Antenna	Band	Duty Cycle(%)	T(us)	1/T(kHz)	VBW Setting
1	802.11a	97.66	2085	0.48	510Hz
1	5GHz 802.11ax HE20 Full RU	98.17	-	-	10Hz
1	5GHz 802.11ax HE20 26 RU	98.28	-	-	10Hz
1	5GHz 802.11ax HE20 52 RU	98.49	-	-	10Hz
1	5GHz 802.11ax HE20 106 RU	98.49	-	-	10Hz
1	5GHz 802.11ax HE40 Full RU	98.81	-	-	10Hz
1	5GHz 802.11ax HE40 242 RU	98.81	-	-	10Hz
1	5GHz 802.11ax HE80 Full RU	98.76	-	-	10Hz
1	5GHz 802.11ax HE80 484 RU	98.81	-	-	10Hz

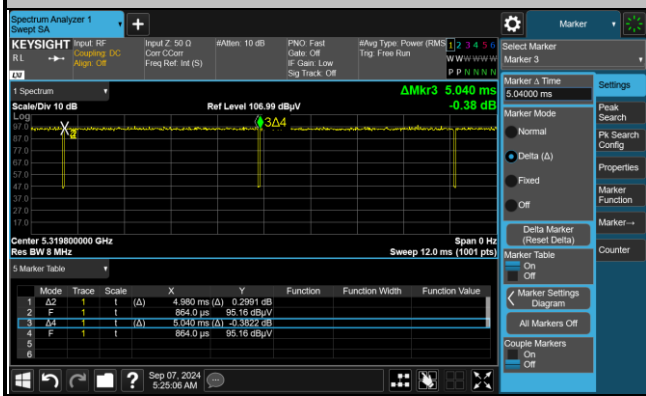


<Ant. 1>

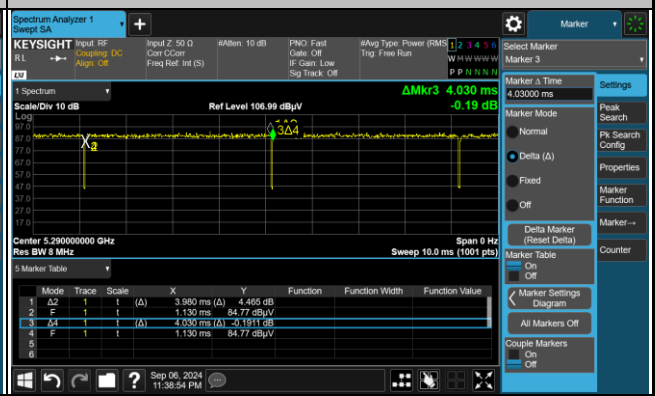




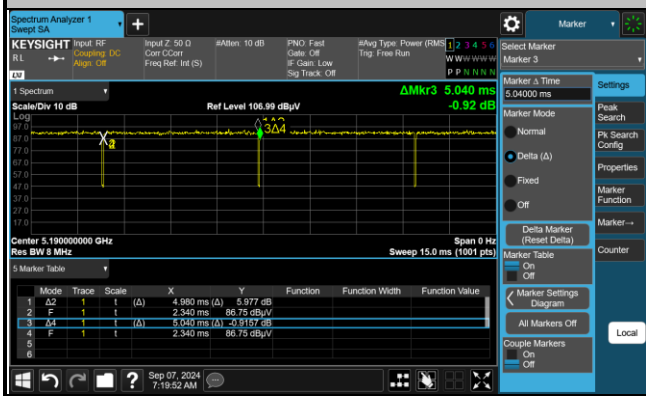
5GHz 802.11ax HE40 242 RU



5GHz 802.11ax HE80 Full RU



5GHz 802.11ax HE80 484 RU





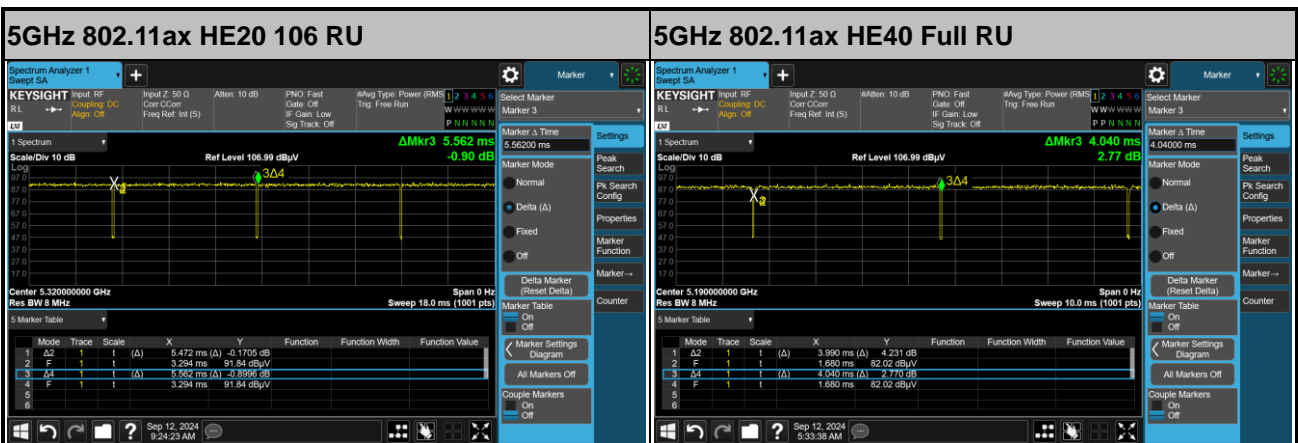
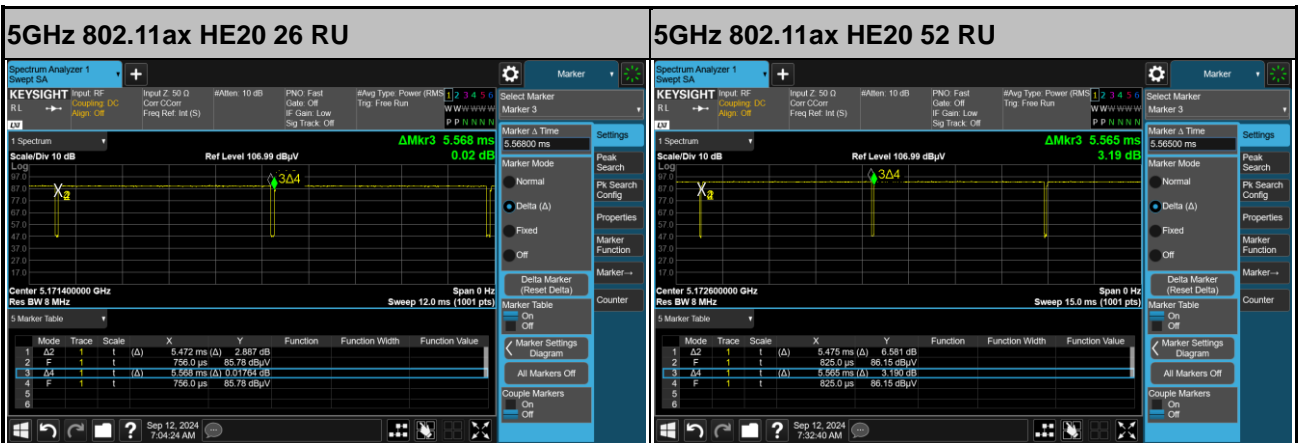
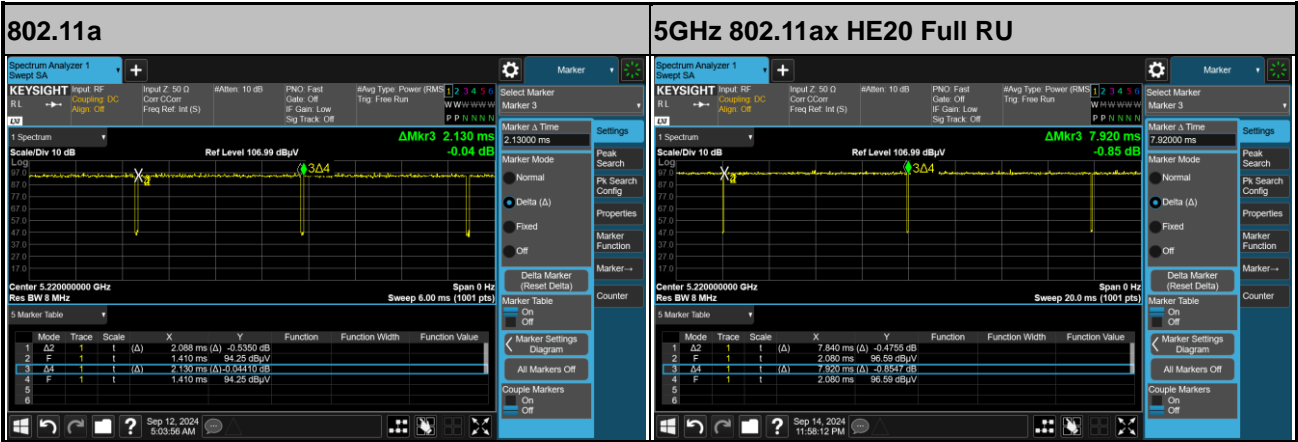
<Ant. 2>

Antenna	Band	Duty Cycle(%)	T(us)	1/T(kHz)	VBW Setting
2	802.11a	98.03	-	-	10Hz
2	5GHz 802.11ax HE20 Full RU	98.99	-	-	10Hz
2	5GHz 802.11ax HE20 26 RU	98.28	-	-	10Hz
2	5GHz 802.11ax HE20 52 RU	98.38	-	-	10Hz
2	5GHz 802.11ax HE20 106 RU	98.38	-	-	10Hz
2	5GHz 802.11ax HE40 Full RU	98.76	-	-	10Hz
2	5GHz 802.11ax HE40 242 RU	98.81	-	-	10Hz
2	5GHz 802.11ax HE80 Full RU	98.87	-	-	10Hz
2	5GHz 802.11ax HE80 484 RU	98.81	-	-	10Hz



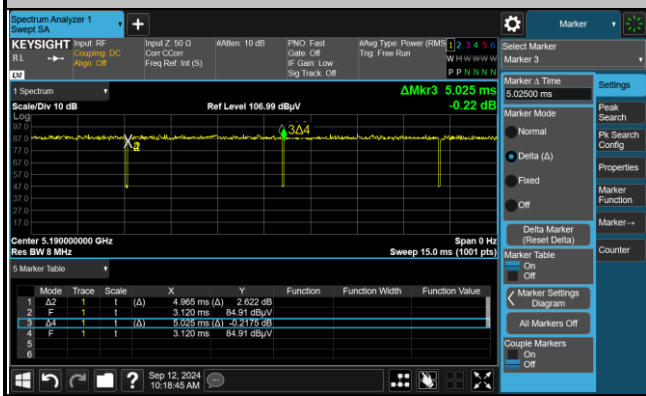


<Ant. 2>

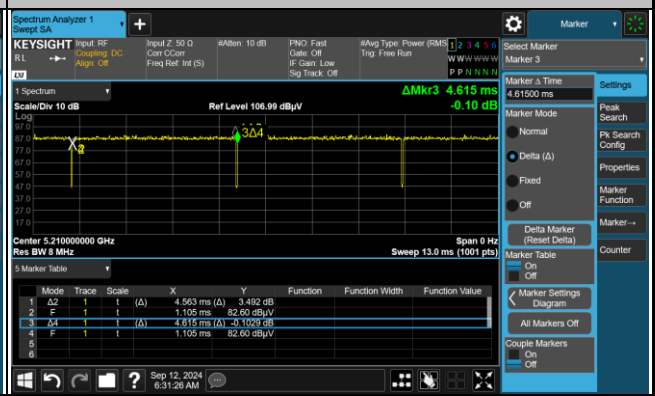




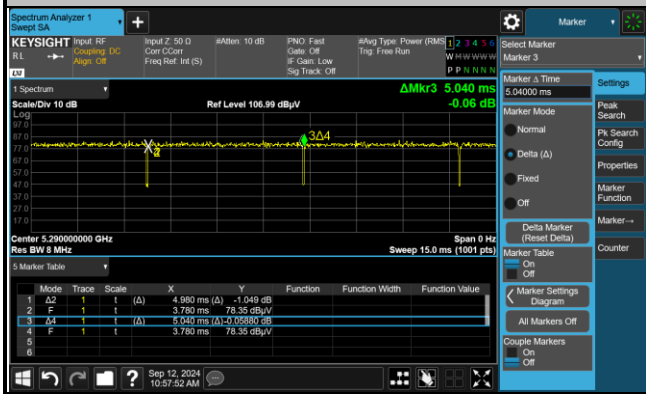
5GHz 802.11ax HE40 242 RU



5GHz 802.11ax HE80 Full RU



5GHz 802.11ax HE80 484 RU





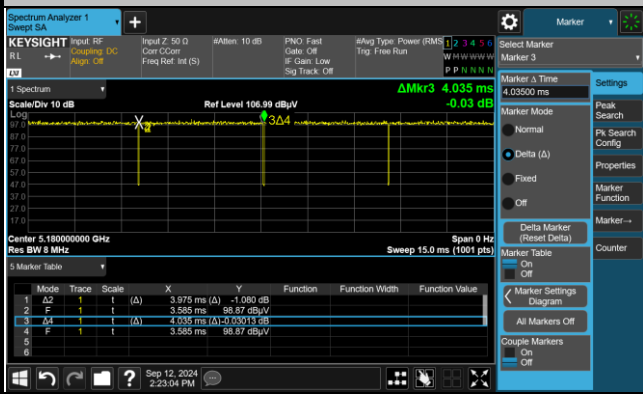
MIMO<Ant. 1+2>

Antenna	Band	Duty Cycle(%)	T(us)	1/T(kHz)	VBW Setting
1+2	5GHz 802.11ax HE20 Full RU	98.51	-	-	10Hz
1+2	5GHz 802.11ax HE20 26 RU	98.36	-	-	10Hz
1+2	5GHz 802.11ax HE20 52 RU	98.36	-	-	10Hz
1+2	5GHz 802.11ax HE20 106 RU	98.36	-	-	10Hz
1+2	5GHz 802.11ax HE40 Full RU	98.88	-	-	10Hz
1+2	5GHz 802.11ax HE40 242 RU	98.80	-	-	10Hz
1+2	5GHz 802.11ax HE80 Full RU	99.03	-	-	10Hz
1+2	5GHz 802.11ax HE80 484 RU	98.81	-	-	10Hz

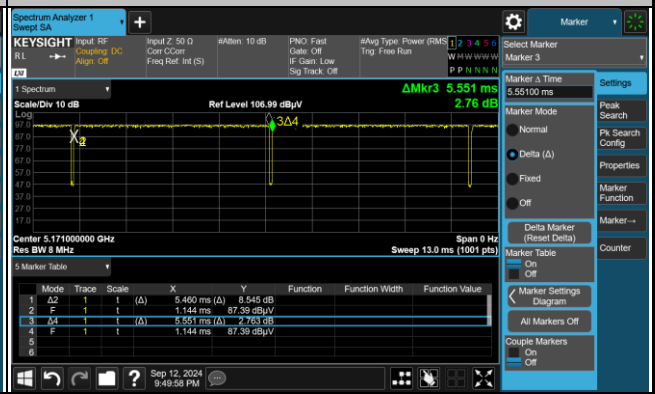


MIMO<Ant. 1+2>

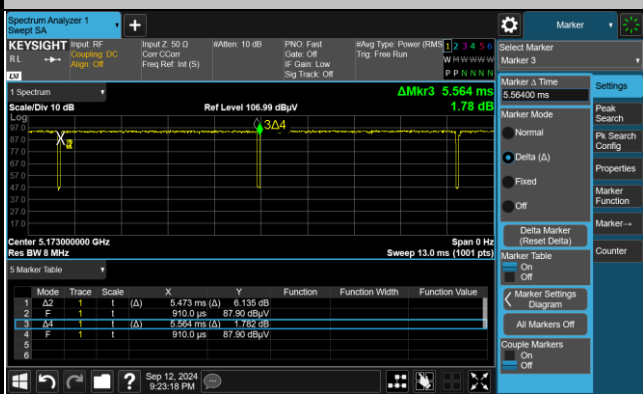
5GHz 802.11ax HE20 Full RU



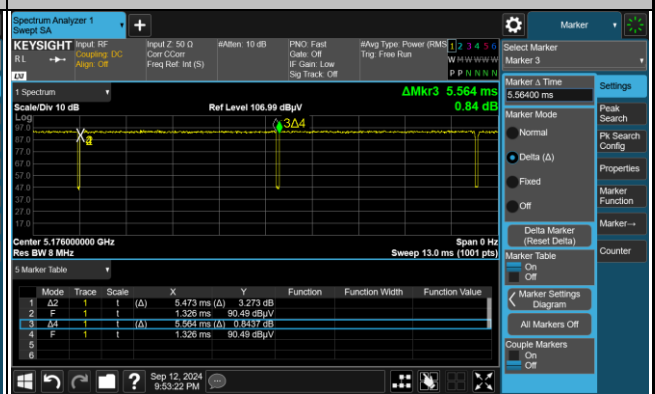
5GHz 802.11ax HE20 26 RU



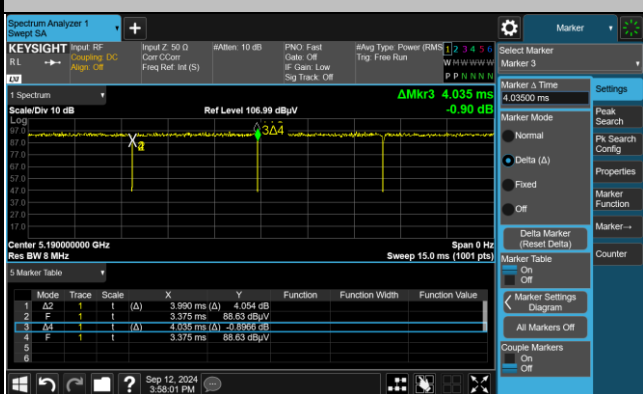
5GHz 802.11ax HE20 52 RU



5GHz 802.11ax HE20 106 RU



5GHz 802.11ax HE40 Full RU



5GHz 802.11ax HE40 242 RU

