

Tip TIP

The scroll function is provided as a gesture. Please refer to the Touchpad Gesture section of this document.

Precautions for Using the Touchpad

- If you are using a touchpad, use the area marked with a red line shown below. Touching an edge or border of the touchpad may not work. (The functioning touch area may differ depending on the product.)

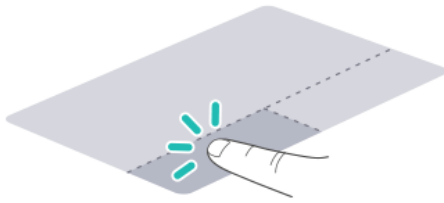
**Moving the Cursor (Pointer) on the Screen**

Place a finger on the touchpad and glide the finger.

**Click (Select)**

Press and release the left button swiftly with a finger. (Or tap the touchpad once.)

Do this, for example, to select a menu or icon and to place the cursor to type on a word processor file.

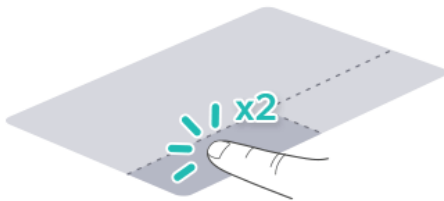


or



Double-click (Execute)

Press the left button twice consecutively and release the button. (Or tap the touchpad twice.)
Do this, for example, to run a program after selecting its execution file (or icon).



or



CAUTION

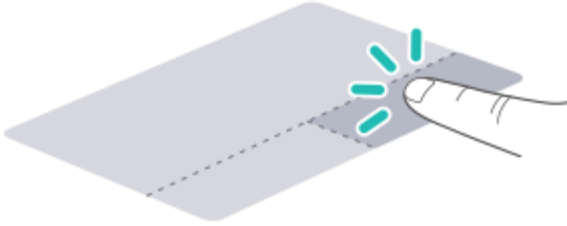
Notes on Using the Touchpad

- Do not use a sharp object such as a pen on the pad nor peel the cover. It may cause an impairment.
- Do not place more than one finger, and do not use while wearing a glove or when the hand is wet. The Touchpad will not work properly. Oil or dirt at the fingertip can also cause an impairment.
- The touchpad is sensitive. Do not impose excessive force or maintain an uncomfortable position. Otherwise, it may result in a finger or wrist injury.

Right button

Press and release the right button swiftly.

Functions as the right button of a mouse, but the usage may differ depending on programs.



Drag & Drop

To drag, click and hold an icon, and move it to another location.

To drop, release the dragged icon in the location you want.

To move a file icon to another folder or to **Recycle Bin**, place the cursor (or the pointer) on the icon, press and hold the left button, and glide another finger on the touchpad until the icon reaches the aimed location. After reaching the destination, release the left button.



1 Drag


- Glide one finger on the pad with another finger pressing and holding the left button.

2 Drop


- Release the left button to drop it into the **Recycle Bin**. (By using this, you can drop a file into the **Recycle Bin** at will.)

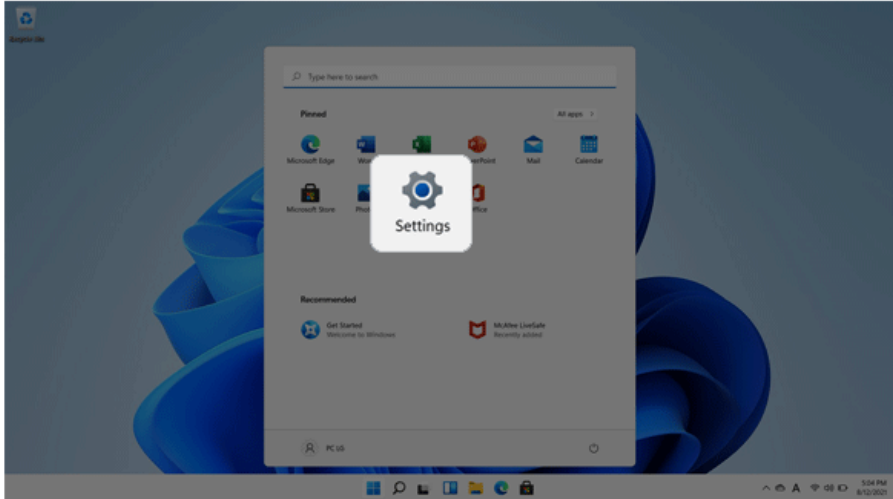
ClickLock

When activated, this feature allows you to drag/scroll without pressing and holding the left button.

- 1 Select the Start button [] > [Settings].

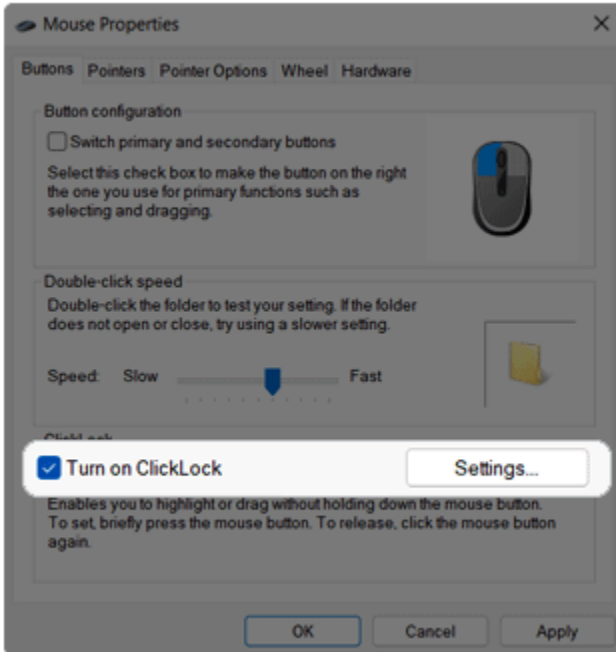
Tip

Press the [] key or [Ctrl] + [Esc] on the keyboard to display the Start screen.

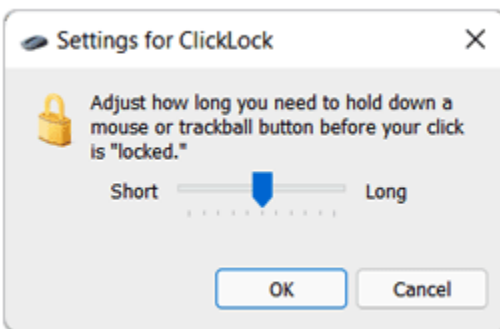


- 2 Select [Bluetooth & devices] > [Mouse] > [Additional mouse settings].

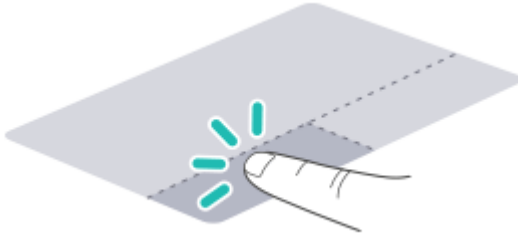
- 3 Check **[Turn on ClickLock]** and select **[Settings]**.



- 4 Set the duration of ClickLock operation.



- 5 Press the left button of the touchpad and release it to change the button into the pressed state.



- 6 Move on the touchpad to use the drag/scroll feature.



- 7 Press the left mouse button to turn off the ClickLock.

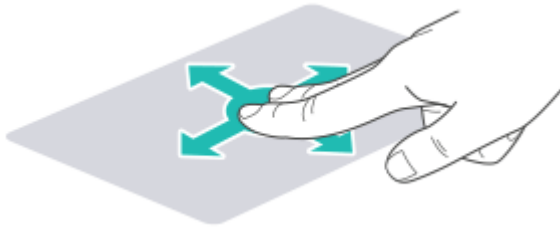
Touchpad Gesture

The touchpad gesture feature allows you to use Windows programs more easily by utilizing multi-touch functions.

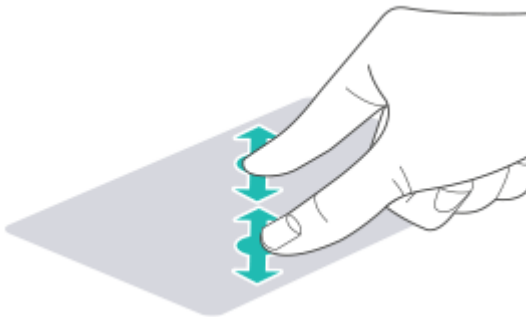
Windows 11 Touchpad Gestures allow you to use the PC more easily.

The touchpad gesture feature may not be supported in some models.

- Place two fingers on the touchpad and move up/down/left/right to scroll the screen. (It operates only on an app or screen which scrolling is available.)




- Place two fingers on the touchpad and widen or narrow them to zoom out or in.




Setting Touchpad

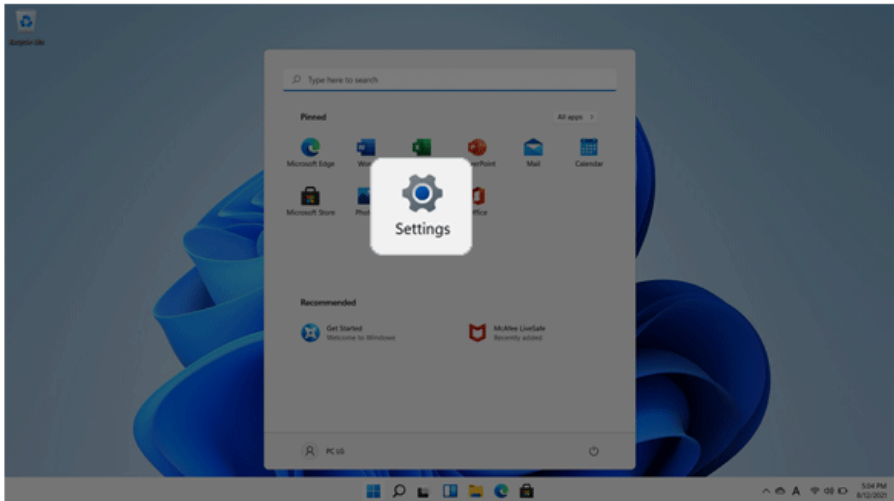
You can change the touchpad features or enable/disable the gesture feature.

The figures herein may differ by language selection and are subject to change without prior notice.

- 1 Select the Start button [] > [Settings].

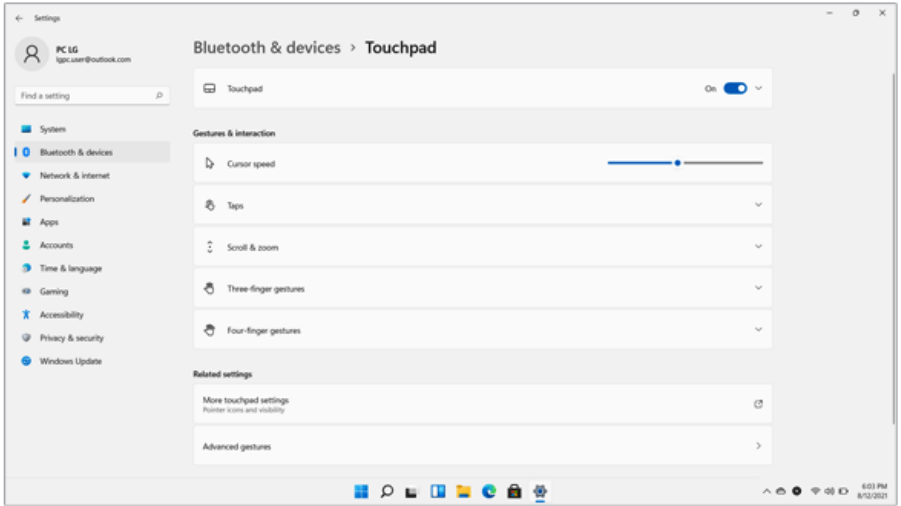
TIP

Press the [] key or [Ctrl] + [Esc] on the keyboard to display the Start screen.



- 2 Select the [Bluetooth & devices] > [Touchpad].

3 Change the settings as needed on the [Touchpad] item.



Connecting to External Display

Connecting to the HDMI Port

HDMI is a multimedia interface that can integrate and transmit video and audio signals.

In some models, DTS Audio may not work when you use HDMI.

Tip TIP


Ensure the monitor power is off before connecting the external monitor to the PC.
Use 'HDMI to VGA Gender' to connect to VGA port.

- 1 Connect the HDMI cable to the PC and the external device (TV, monitor) that supports HDMI. HDMI port transfers both video and audio simultaneously. Hence, there is no need for a separate audio connection.



- 2 On the PC, press [Fn] + [F7] to display monitor (projector) toggling screen. Select the desired screen output.

Tip TIP

- Everytime [] + [P] keys are pressed, the screen output option changes. Release the keys to display the selected screen output.



CAUTION

- If you do not set Speaker as the default value after disconnecting the HDMI cable, the system may not produce any sound.
- If a program was running already, you must exit and restart the program to produce sound.

Connecting to Wireless Display

The wireless display feature connects the PC screen and sound to a display (TV, projector, etc.).


OPTION

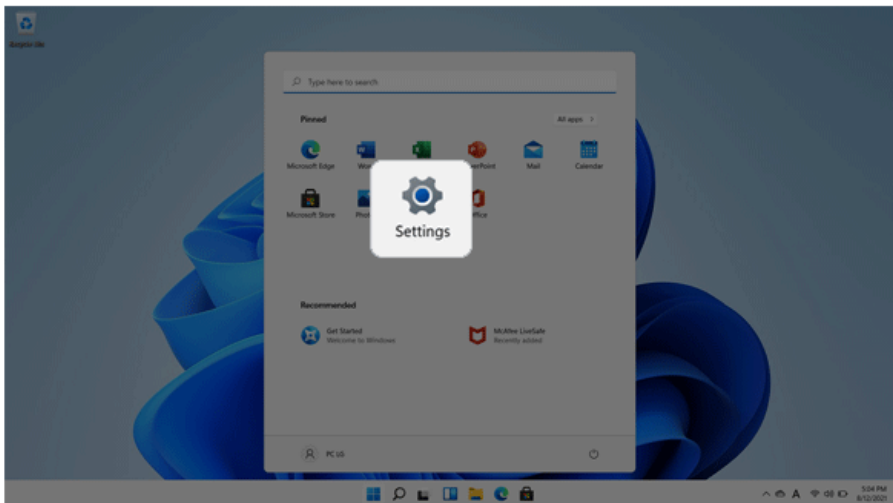
- To use the wireless display feature, the display device must support this feature.
- To connect to the display device that does not support wireless display, you must separately purchase a wireless display connection device.
- Once the wireless display connection is established, no additional procedures and searching are necessary the next time you try to connect.

Connecting to Wireless Display

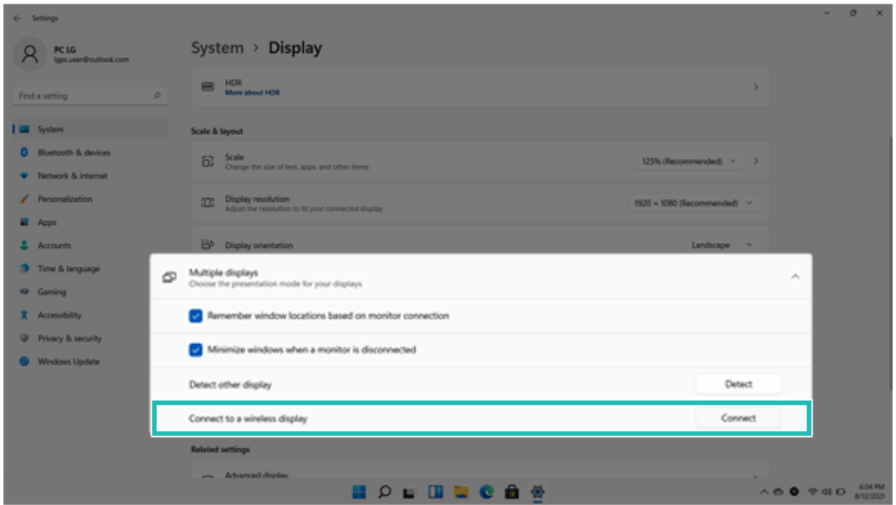
- 1 Select the Start button [] > [Settings].

TIP

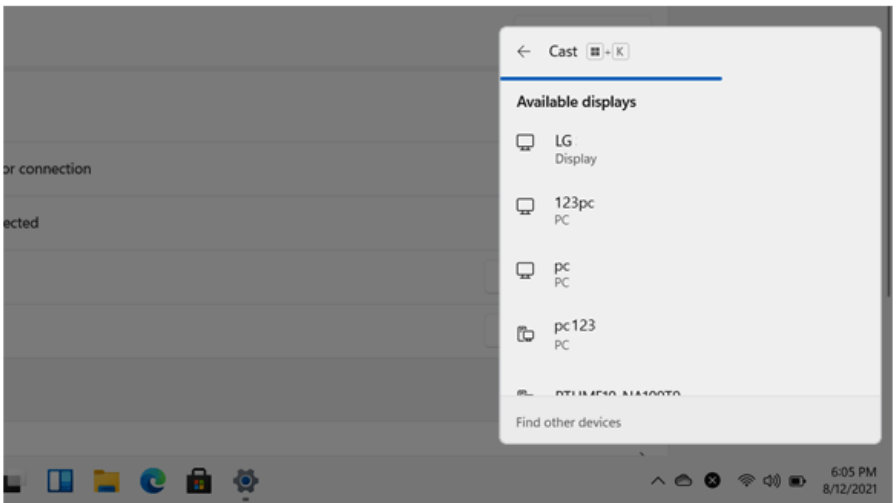
Press the [] key or [Ctrl] + [Esc] on the keyboard to display the Start screen.



- 2 Select [Connect] under the [System] > [Display] > [Multiple displays] > [Connect to a wireless display] menu.



- 3 If the device search screen appears, it will search for nearby wireless display devices.



- 4 Select an available device and connect the device.

- 5 Once the wireless display device is connected, it outputs the PC screen and its sound.

Connecting an External USB-C™ (Thunderbolt™) Device

The USB-C™ port mounted on this product supports USB 4.0 Gen 3x2 standards.

Use the USB-C™ port to connect USB devices or to output a screen to an external display.

 **TIP**

The names of USB versions have changed from USB 3.0 (or USB 3.1 Gen 1) and USB 3.1 (or USB 3.1 Gen 2) to USB 3.2 Gen 1x1 and USB 3.2 Gen 2x1.

Connecting a USB Device

If a USB device is connected to a USB-C™ port, the port works as an ordinary USB port.

 **TIP**

To use a conventional USB device, a separate conversion adapter should be used.
(Conversion adapters may be purchased separately.)

Outputting to an External Display

By connecting a display that supports USB-C™ Alternate Mode, you can use the USB-C™ port to output a screen to an external display.

 **TIP**

The Alternate mode allows you to use the DP (DisplayPort) and HDMI outputs through the USB-C™ port.

We support DP (DisplayPort) interface standards.



CAUTION

You must use a cable that supports **Alternate Mode** to output a screen to another display.

If you use USB-C™ accessories (cables, interface adapters, etc.) that are used for other products, you may have compatibility problems (no screen output or a malfunction).

Connecting a Thunderbolt™ Device

You can connect to the USB-C™ port an external display or a high-performance data device that support the Thunderbolt™ specifications.

Depending on the specifications of the device connected to the USB-C™ port, it acts as a USB or Thunderbolt™ device.

Tip TIP

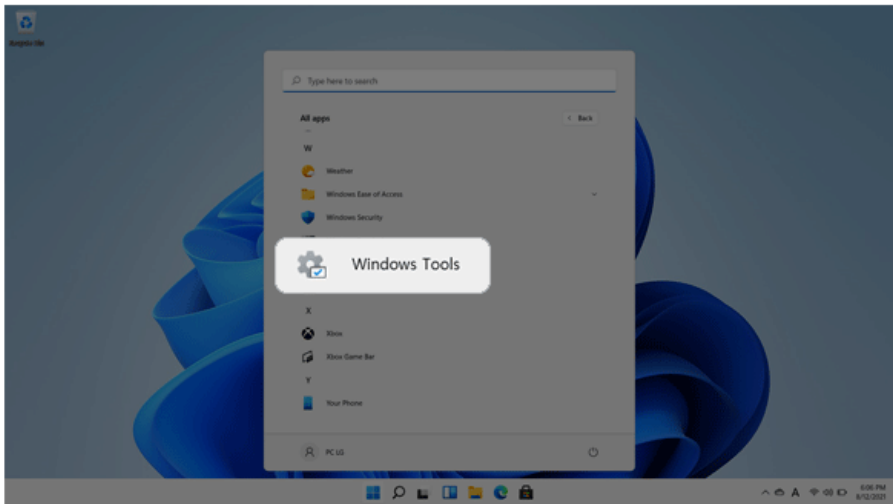
The Thunderbolt™ cable is not provided with the product. Make sure that you use a certified cable.

Some functions may not be available depending on the product. For more information, refer to the user manual provided with the device to be connected.

Connecting two notebook PCs that support Thunderbolt™

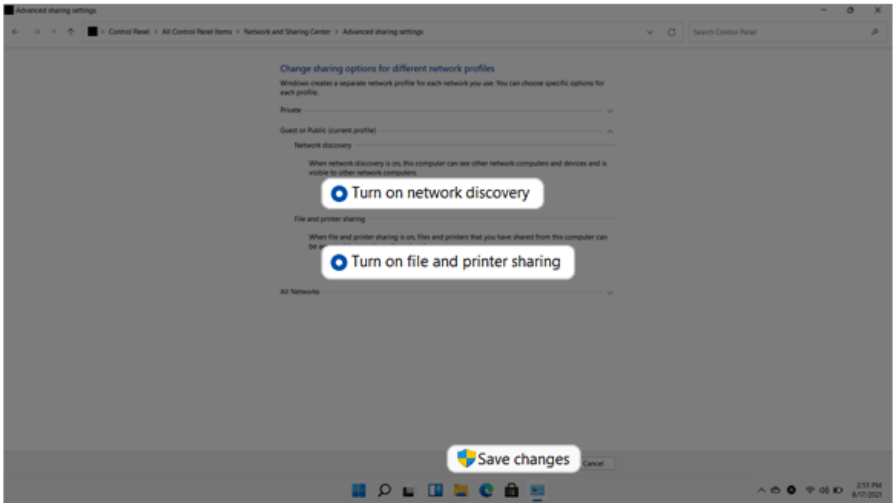
Use Thunderbolt™ to connect two PCs easily and quickly and send and receive data between them.

- 1 Select the Start button [] > [All apps] > [Windows Tools].

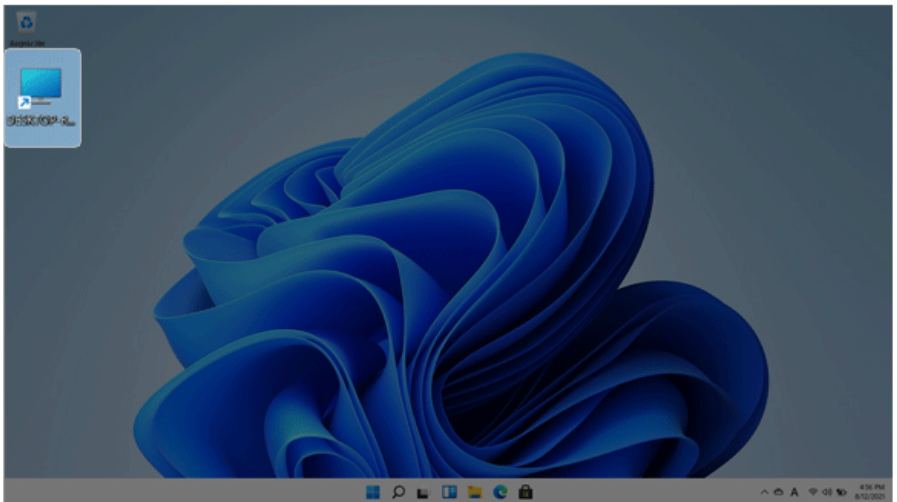


- 2 Select [Control Panel] > [Network and Sharing Center] > [Change advanced sharing settings].

- 3 Enable [Change sharing options for different network profiles] and save the changes.



- 4 Use the Thunderbolt™ cable to connect two notebook PCs.
- 5 A while later, an icon of the connected computer appears on the desktops of the two notebook PCs.



- 6 Double-click the connected computer icon to open the authentication screen.
- 7 Input the user name and password to connect to the other PC.

Tip TIP

If there is no shared folder in the connected PC, nothing may appear on the screen.

Using USB-C™ (Thunderbolt™) Charging Function

You can connect the USB-C™ device to charge a notebook PC battery or an external device, and the operation mode is automatically selected depending the charge settings of the connected device.

- To charge a notebook PC battery, the external device (USB PD Charger, notebook PC, etc.) should support USB Power Delivery 10 W (5 V / 2 A) or higher profile.
 - The external devices that use the USB-C™ port support 10 W (5 V / 2 A) and 15 W (5 V / 3 A).
 - A USB device compatible with USB PD (Power Delivery) supports charging at 15 W (5 V / 3 A), whereas a regular USB device supports charging at 10 W (5 V / 2 A).
 - USB PD batteries cannot be charged using the USB-C™ port of the notebook PC.
 - Always-On Charging is supported only with USB-C™ ports, but not with the regular USB ports.
 - If you connect an adapter with a lower output than the rated adapter, it may take more time to charge the notebook PC.
- 1 When the connected device is set to Automatic (charging the notebook PC or a connected device. Charging the notebook PC by using the mobile phone is not supported.)



- 2 When the connected device is set to Source (the notebook PC is charged.)



- 3 When the connected device is set to Sink (the connected device is charged.)



**Tip TIP**

The charging status of the external device being charged is not displayed on the notebook PC. If you connected a smartphone, you should select "Charge mobile phone" on the smartphone screen to charge the phone battery.

**CAUTION**

If the power consumption of the notebook PC is larger than the power supply from the external device, the battery may be consumed gradually.

Bluetooth

Bluetooth allows the user to access wirelessly various devices such as camera, cell phone, headset, printer, and GPS receiver that support Bluetooth . It can also establish a network and exchange data with other Bluetooth -enabled PC or smartphone.

OPTION


The Bluetooth device is optional, and it may not be available in some models.

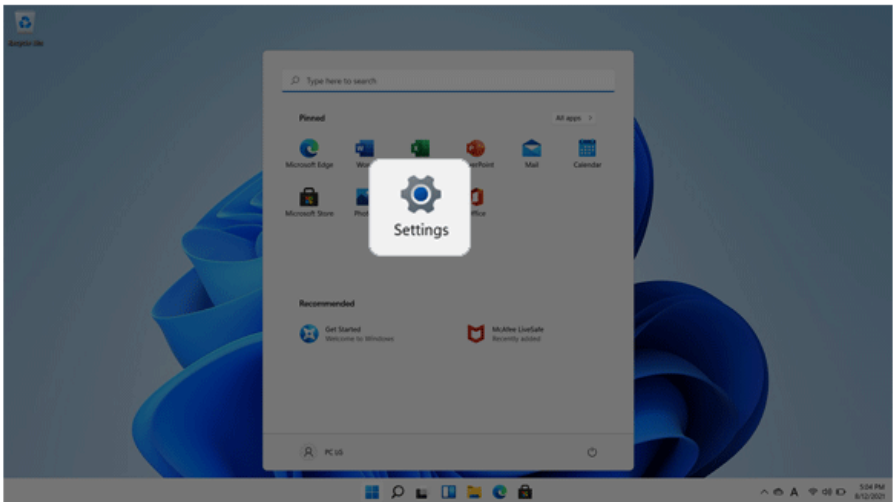
The figures herein may differ by language selection and are subject to change without prior notice.

For details on connecting a Bluetooth device, refer to the user manual provided with the Bluetooth device.

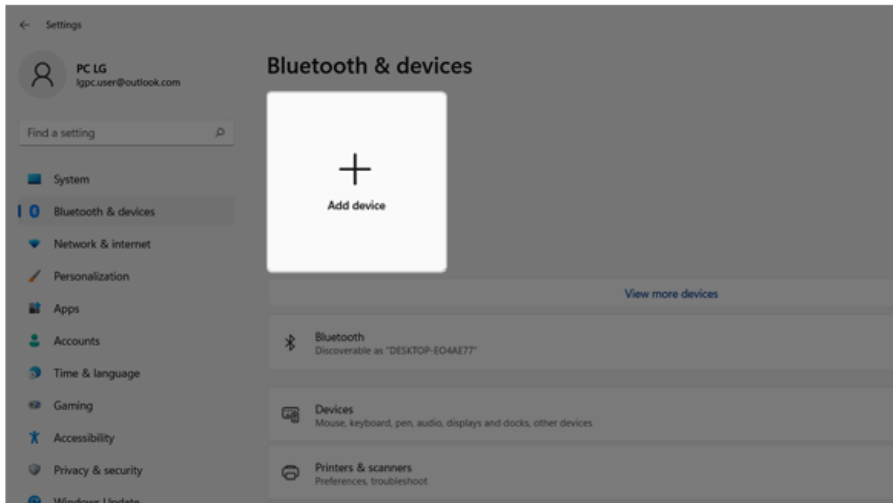
- 1 Select the Start button [] > [Settings].

TIP

Press the [] key or [Ctrl] + [Esc] on the keyboard to display the Start screen.



- 2 Select [Bluetooth & devices] > [Add device].



- 3 Select the **Bluetooth** to search for Bluetooth devices automatically.



- 4 After selecting the device you want to connect, complete the Bluetooth connection as guided.

Wired LAN

LAN is the network environment that users can connect to by using a cable to connect to their internet providers or the company's network.

Using Wired LAN

LAN is installed with an automatic IP (DHCP) as default value.

Please refer to the following instructions for details on setting up an automatic IP (DHCP) or manual IP.

- 1 Connect the LAN adapter to the USB-C™ port on the PC.

Tip TIP

The recommended network cable for the optimal network environment is CAT5 or higher.
The network (LAN) cable may be connected when the LAN adapter is used.




- 2 Connect the wired LAN cable to the LAN port.

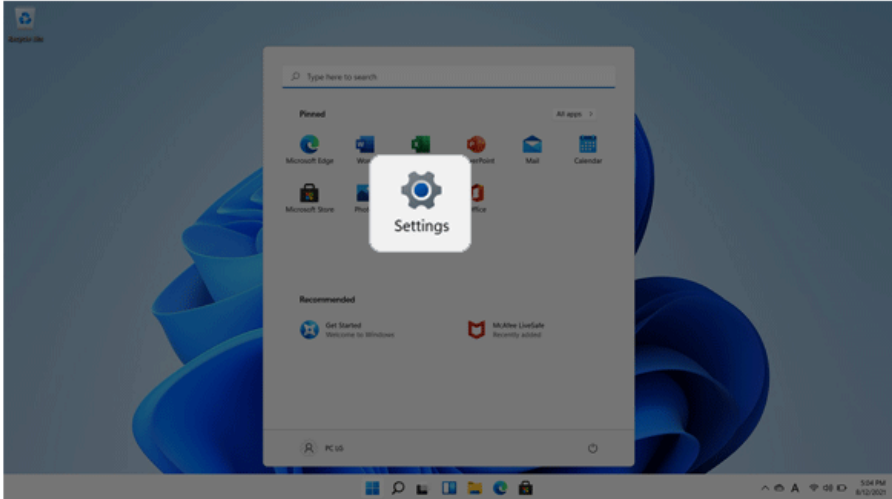


- 3 Select the Start button [] > [Settings].

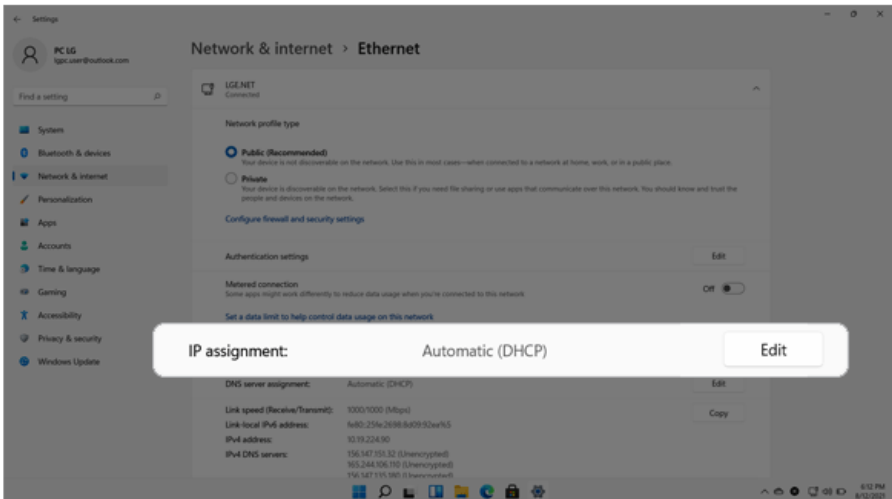
TIP

Press the [] key or [Ctrl] + [Esc] on the keyboard to display the Start screen.

ENGLISH

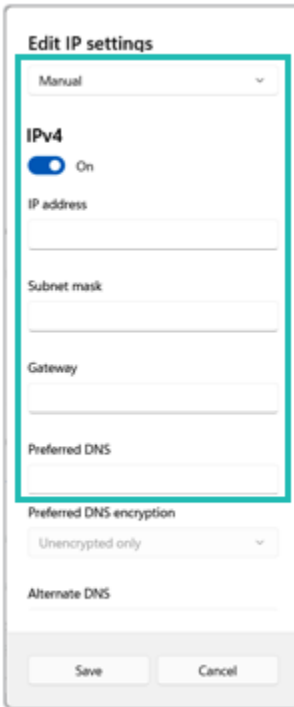


- 4 Select [Edit] in [Network & Internet] > [Ethernet] > [IP assignment].



- 5 To use an automatic IP (DHCP), select [Automatic]. If you wish to use a static IP, set [Manual] > [IPv4] to [On] and enter the necessary item.

Contact the network service provider or administrator to use a static IP.



Edit IP settings

Manual

IPv4

On

IP address

Subnet mask

Gateway

Preferred DNS

Preferred DNS encryption

Unencrypted only

Alternate DNS

Save Cancel

- 6 Select [Save] to complete the network setup.
- 7 Click the Web Browser icon to check whether the internet is operating normally.

Wireless LAN

The wireless network (Wireless LAN) is the network environment that connects a PC with the internet provider or company network through an Access Point (wireless or regular router).

OPTION

Wireless LAN is optional. Hence, it may not be installed in some models.

Turning On/Off **Airplane Mode**

Prior to using the wireless LAN, press [Fn] + [F6] to turn off **Airplane Mode**.

Pressing [Fn] + [F6] keys will turn on or off the **Airplane Mode**. If you are not going to use the product for a while, keep the **Airplane Mode** turned on to reduce the battery power consumption.

Using the Wireless LAN

If an Access Point (wired or wireless router) is in the vicinity of the PC, the wireless LAN can easily be accessed.

When searching for a wireless LAN, multiple Access Points may be discovered depending on the location of use.

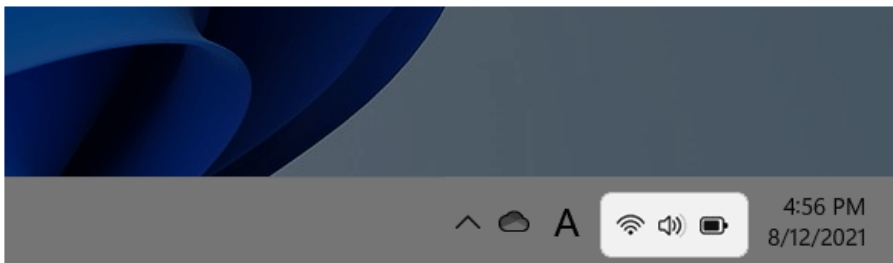
In case no accessible wireless LAN is near the PC, no Access Point might be found.

A password-protected Access Point cannot be accessed without the correct password.

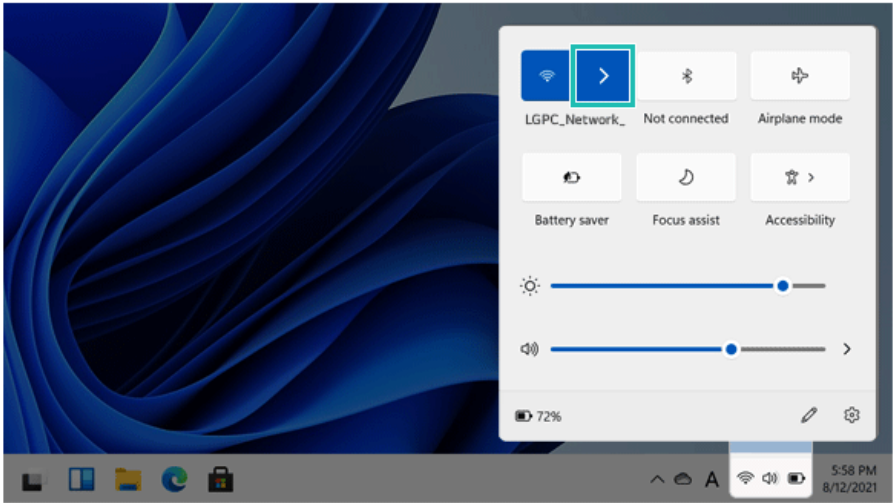
- 1 Select **[Quick Settings]** on the right side of the taskbar.

TIP

The displayed icons may differ from the figures herein.

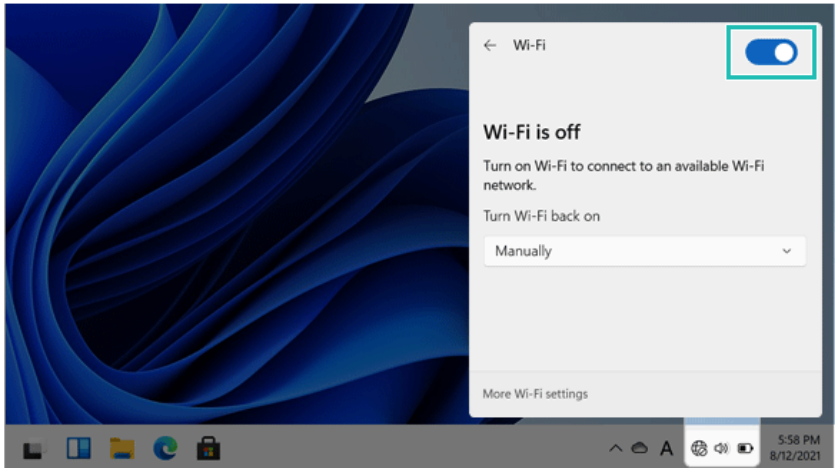


- 2 Select **Manage Wi-Fi Connections** [>] to search for near Access Point.

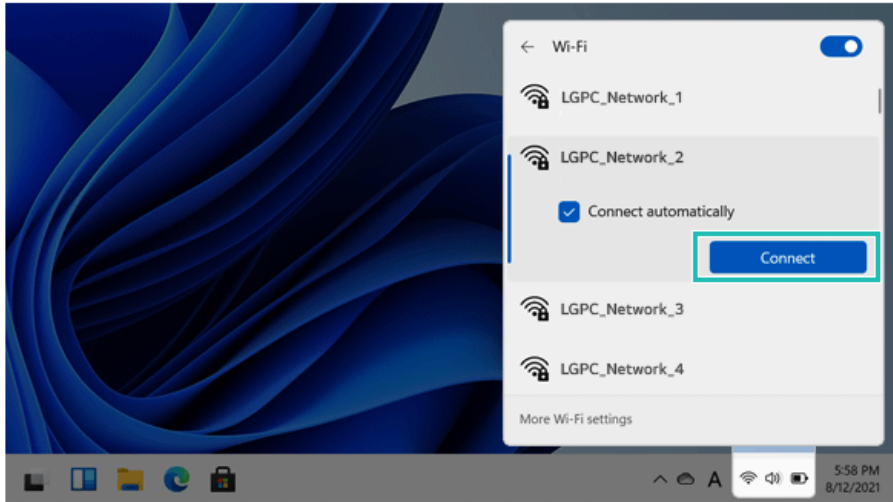


Tip TIP

When **Wi-Fi** is turned off, set [Wi-Fi] to On.



- 3 Select the Access Point you want to connect to and press [Connect].



- 4 If a connection is established, [Connected] appears below the Access Point name.
- 5 Click the Web Browser icon to check whether the internet is operating normally.

Using a Wired/Wireless Router

A wireless/regular router connects several PCs and mobile devices to one internet line and enables the use of internet and the network.

A wireless/regular router has to be bought separately. Refer to the manual provided by the manufacturer for instructions.

Connecting a Wireless or Regular Router

If one internet line is used with a wired/wireless router and several devices are connected, this may result in a slower connection.

In case of a wireless LAN, it is recommended to change the network name and security settings for a more secure connection.

Network speed can differ according to operation environment and specifications.

- 1 Connect the internet cable of the modem that was provided by your internet provider to the router's WAN port.
- 2 Connect all devices (PC, IPTV, internet phone, etc.) with a LAN cable to LAN ports 1 to 4 of the router.
The number of LAN ports can vary for each router model.
- 3 Please refer to the manual provided by the router manufacturer for setup of the network and internet.

microSD Slot

Checking Available Memory Card

This model supports microSD memory cards.

- Directly applicable memory cards



microSD

Mounting and Using Memory Card

This product has one **microSD** slot.

Check the insertion direction of the memory card and push the **microSD** memory in until it is fully seated.



Tip TIP

- When the memory card is formatted, the data stored in the memory card will be deleted. Check whether there are important data before formatting the memory stick.
- To format a memory card, right-click the memory card drive and select Format. When the Format window appears, press Start to continue.
- If the write protection tab of memory card is locked, the user cannot format the memory stick nor write or delete the data.
- **microSD** memory cards can be used only as storage devices and do not support the copyright protection feature.

Removing Memory Card

Push the card with your finger to make the card spring out of the slot. Remove the memory card.

Using Software

LG Smart Assistant

LG Smart Assistant allows you to easily change the settings of your PC according to your needs.


Tip TIP

Menus and supported functions may differ depending on the model.

Please update the program to the latest version through **LG Update & Recovery** (or **LG Update**).

The figures herein are subject to change without prior notice.

Running LG Smart Assistant

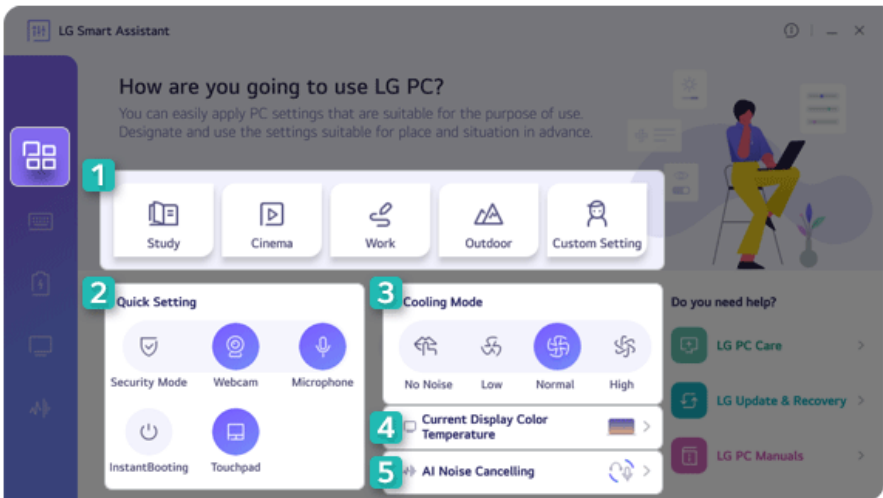
Select the Start button [] > [All apps] and run [LG Smart Assistant].



- 1 **Information Button:** Runs Help or displays information about the software.
- 2 **Minimize/Exit Button:** Minimizes the size of the window, or exits the software.
- 3 **Dashboard:** Allows you to specify PC settings suitable for the purpose of use and apply them at once, or to set key PC functions easily.

- 4 **Keyboard Setting:** Allows you to set keyboard lighting settings, Fn key lock settings, NumLock key status indicator and your own hot keys.
- 5 **Power Setting:** Allows you to check the battery status and extend the battery life, set the power and sleep settings, and set the USB-C™ port charging function.
- 6 **Display Setting:** Allows you to set the color temperature of the display or use the reader mode.
- 7 **AI Noise Canceling:** Allows you to set the noise canceling function for the microphone input and the speaker output.
- 8 **Go to LG Software:** Allows you to run LG PC Care, LG Update & Recovery (or LG Update), and LG PC Manuals directly.

Dashboard



- 1 **User Mode:** Allows you to set the user mode according to the PC environment.
- 2 **Quick Setting:** Allows you to set the PC settings easily.
 - **Security Mode:** Allows you to turn off the webcam and the microphone.
 - **Webcam:** Allows you to turn off or on the webcam.
 - **Microphone:** Allows you to turn off or on the microphone.
 - **Instant Booting:** Allows you to set the system to turn on automatically when you open the cover of the notebook PC.
 - **Touchpad:** Allows you to turn off or on the touchpad.

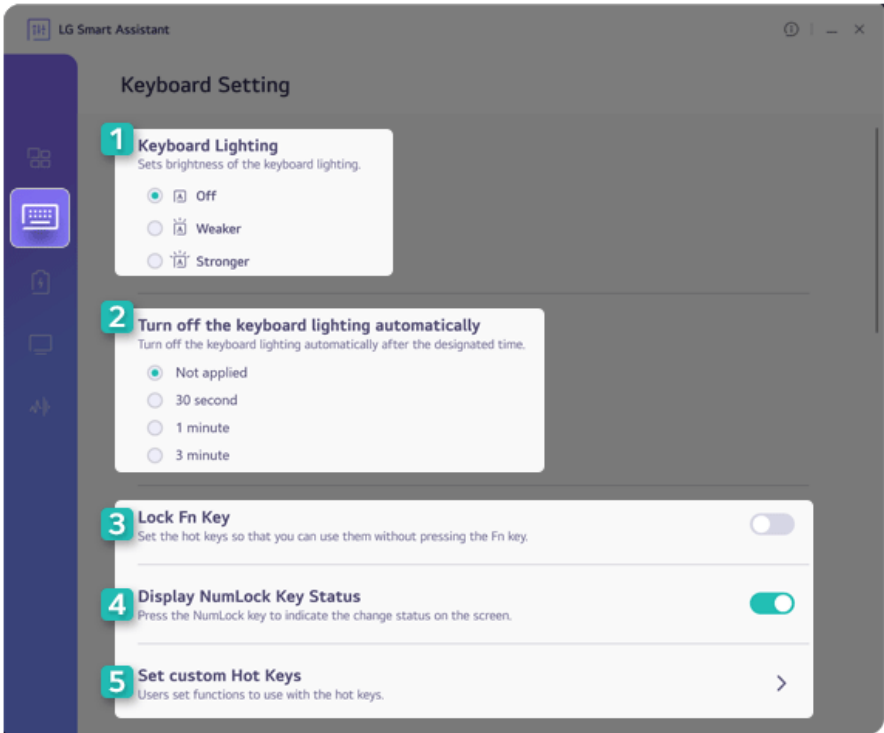
- 3 **Cooling Mode:** Allows you to set the fan mode of the PC according to the PC environment.
- **No Noise Mode:** Limits the PC performance so that the PC does not generate fan noise. (The PC surface temperature may rise when the function is used for a long time. It automatically changes to the **Normal Mode** upon reboot.)
 - **Low Mode:** Minimizes fan speed so that you can use the PC in a quiet environment. (This may degrade your PC performance. It automatically changes to the **Normal Mode** upon reboot.)
 - **Normal Mode:** Optimizes PC performance, heat and noise.
 - **High Mode:** Changes the mode to the one for the tasks that require high performance. (This may result in increased PC surface temperature and noise, and shorter battery life. It automatically changes to the **Normal Mode** upon reboot.)

**CAUTION**

When using for a long term, use **Normal Mode**.



- 4 **Current Display Color Temperature:** Go to the [Display Setting] menu.
- 5 **AI Noise Canceling:** Go to the [AI Noise Canceling] menu.

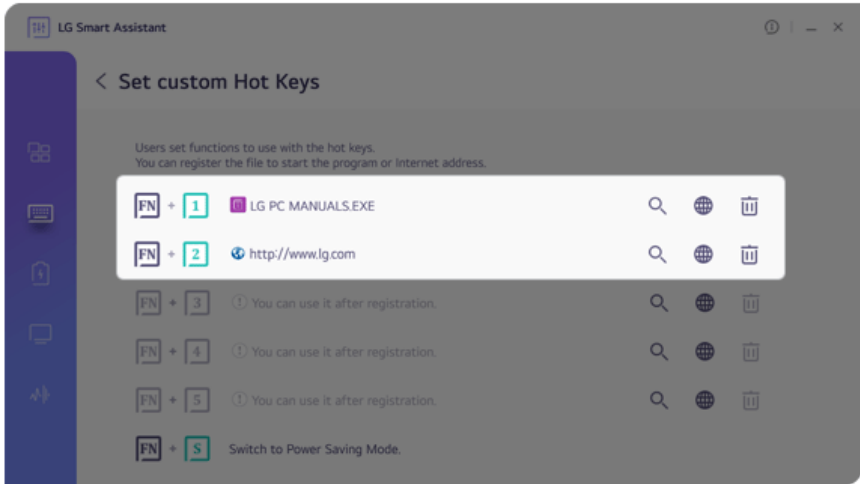
Keyboard Setting



- 1 **Keyboard Lighting:** Allows you to set the keyboard lighting and brightness.
- 2 **Turn off the keyboard lighting automatically:** Allows you to set the keyboard light to turn off automatically after a specified amount of time.
- 3 **Lock Fn Key:** Allows you to set the hot keys (F1 - F12) to operate even without pressing Fn.
- 4 **Display NumLock Key Status:** Allows you to set the screen to display the status change when you press the NumLock key.

5 Set custom Hot Keys: Allows you to register an app or internet address to a custom hot key.

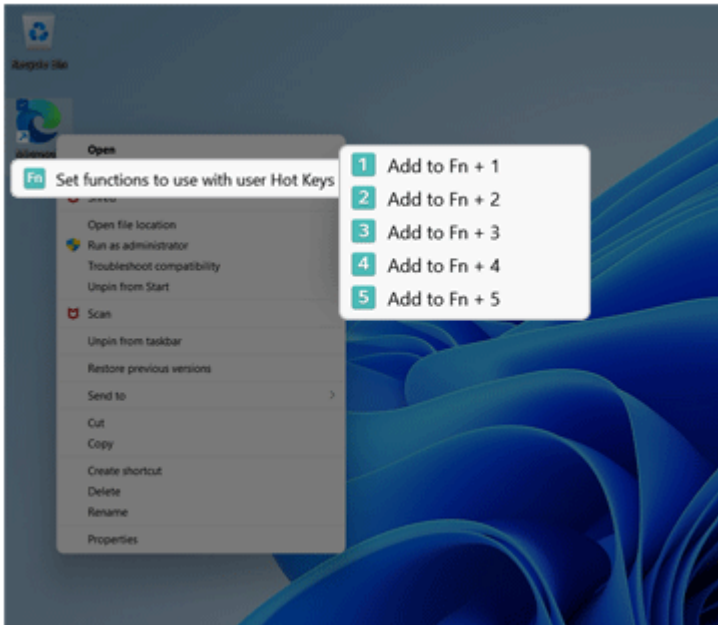
- On the Hot Keys Settings List, select the navigation icon [] or the internet icon [] to register the desired app or Internet address to a hot key.



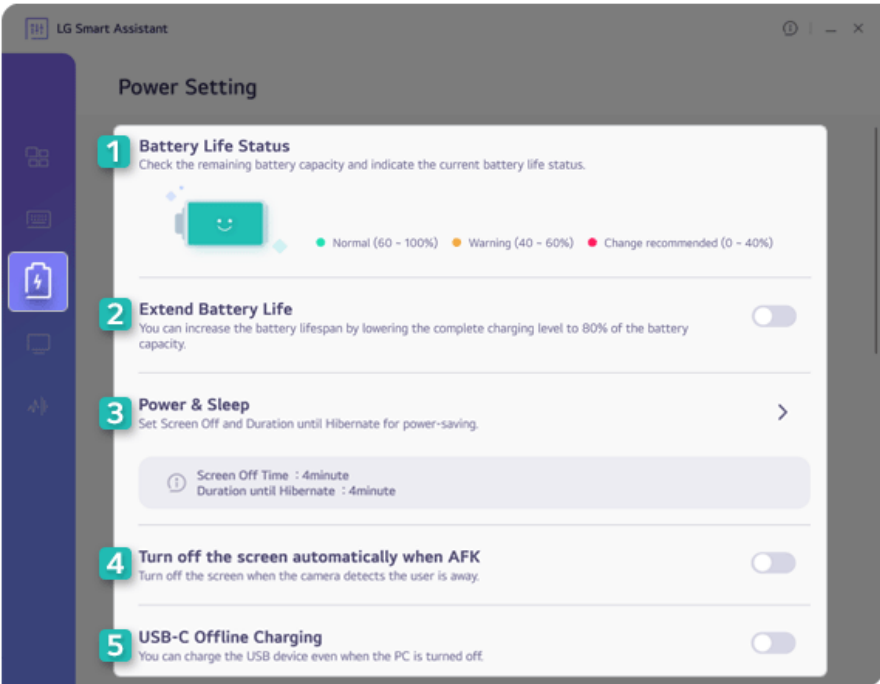
TIP

- Some abnormal program files (exes) and Internet addresses (links) may not be linked.
- Hot keys can be set from 1 to 5, and the [Fn] + [S] Sleep Mode cannot be changed.

- After selecting the app-running file, right-click the mouse and use the [Show more options] > [Set functions to use with user Hot keys] menu to register the app quickly.

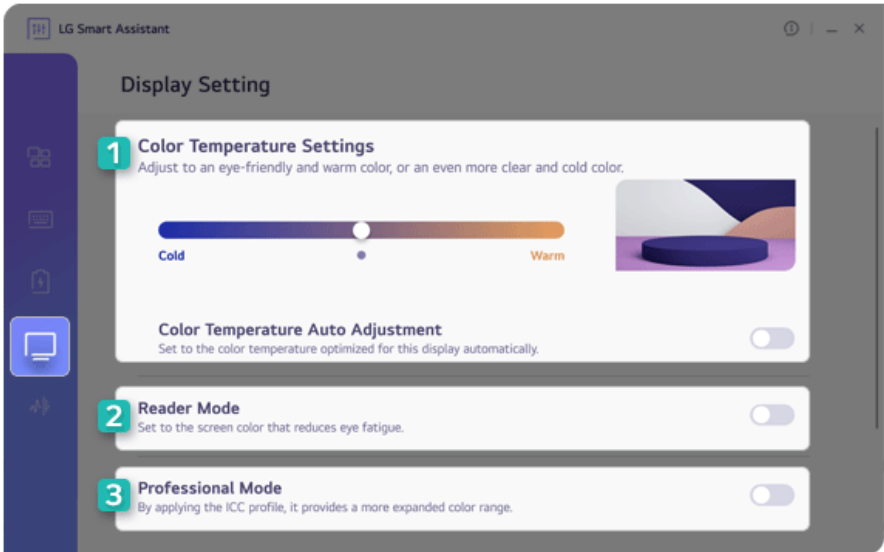


Power Setting



- 1 Battery Life Status:** Displays the battery status so that you can replace the battery timely.
- 2 Extend Battery Life:** Allows you to lower the max. battery charge level to 80% to extend the battery lifespan.
- 3 Power & Sleep:** Displays the screen off time and the sleep mode entry time. You can go to Windows settings and set the time.
- 4 Turn off the screen automatically when AFK:** Allows you to set the screen to automatically turn off when you are away from the keyboard for a certain amount of time.
- 5 USB-C™ Offline Charging:** Allows you to set the PC to charge external devices via the USB-C™ port even when the PC is turned off.


Display Setting



- 1 **Color Temperature Settings:** Allows you to adjust the screen color temperature to cool (bluish screen color) or warm (reddish screen color) or use the automatic color temperature function.
- 2 **Reader Mode:** Allows you to set the Reader Mode to reduce eye fatigue when reading documents.

**CAUTION**

Using the **Reader Mode** and the **Night light** at the same time can cause color distortion. When you use the **Reader Mode**, turn off the **Night light**.

- You can turn [Night light] on or off in the Start button [] > [Settings] > [System] > [Display].

**TIP**

You can use hot keys to use the **Reader Mode** function more conveniently.

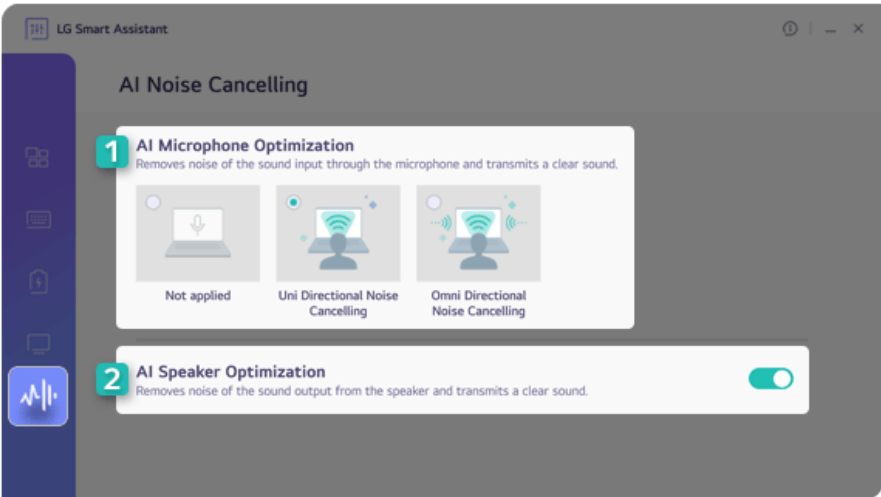
- Press the [Fn] + [F9] keys to switch the PC screen to **Reader Mode**. Press them again to turn off **Reader Mode**.

- 3 **Professional Mode:** Provides a more extended color gamut to the display and enhances the content color reproduction.

**TIP**

Professional Mode uses an ICC profile and works only in some programs.

AI Noise Cancelling



- 1 **AI Microphone Optimization:** Cancels out the noise input to the microphone to deliver clear sound.
- 2 **AI Speaker Optimization:** Cancels the noise output from the speakers to deliver clear sound.

LG Update & Recovery

LG Update & Recovery performs updates to keep the system in an optimal state, and backs up and recovers data in case a problem occurs so that you can safely use your PC.

TIP

For some models without the **Recovery** function, only the **LG Update** function is provided.

Menus and supported functions may differ depending on the model.


It may not work properly depending on user environment (security tools, etc.) and the network status.

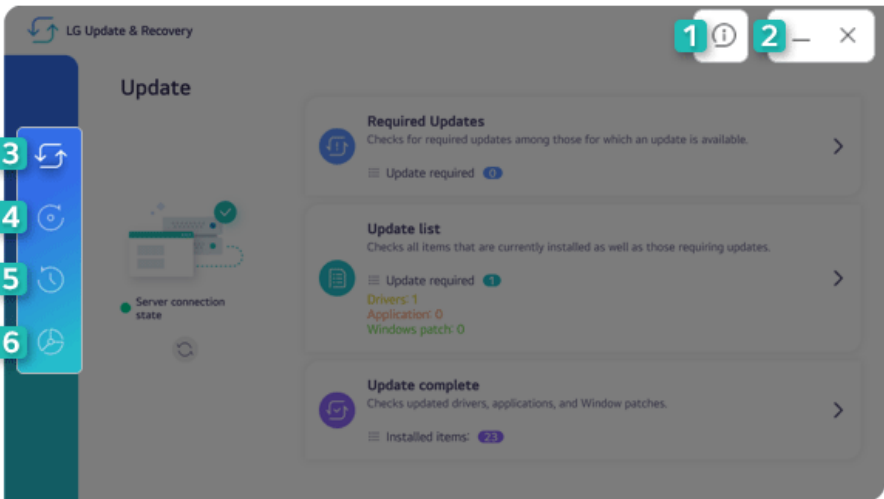
You can use **LG Update & Recovery** (or **LG Update**) to install the deleted drivers or the latest drivers easily and quickly.

Use **LG Update & Recovery** (or **LG Update**) to keep your system current and optimized.

The figures herein are subject to change without prior notice.

Running LG Update & Recovery (or LG Update)

Select the Start button [] > [All apps] and run [LG Update & Recovery] or [LG Update].



- 1 **Information Button:** Runs Help or displays information about the software.
- 2 **Minimize/Exit Button:** Minimizes the size of the window, or exits the software.

- 3 **Update:** Allows you to install various PC drivers, applications and Windows patches easily and quickly.
- 4 **Backup:** Allows you to back up Windows, disk environment, and data safely.
- 5 **Recovery:** Allows you to recover backup data or reset your PC.
- 6 **Tools:** Partitions the disk installed with Windows or the data disks.

TIP

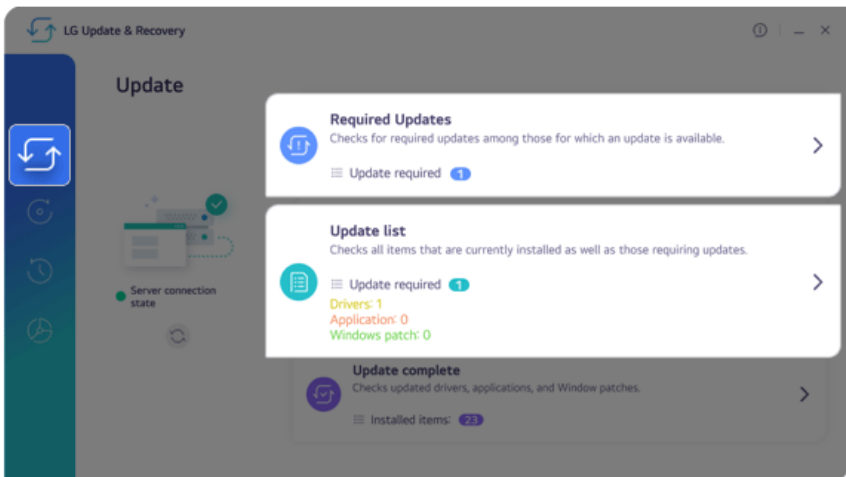
For details on backup and recovery, see [Recovering the System].

LG Update does not support [Backup], [Recovery], and [Tools] menus.

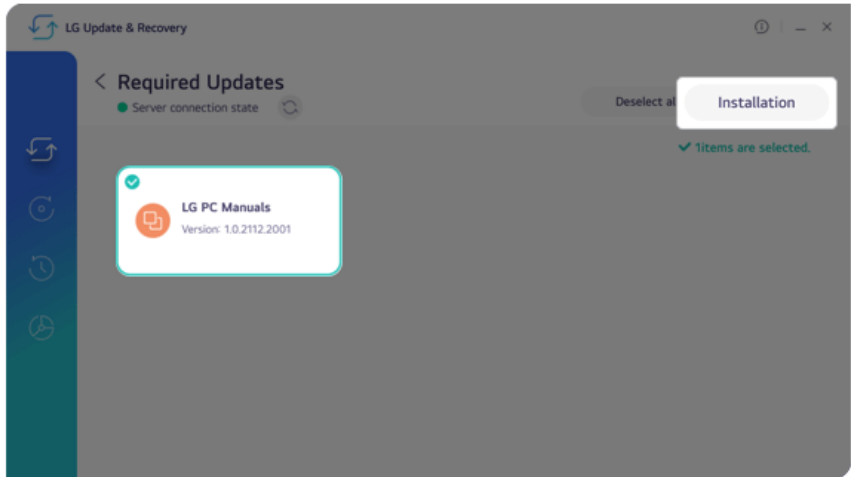
Update

If an item that needs updating is displayed, you can select it and update it.

- 1 Select [Required Updates] or [Update list] from the [Update] menu.



- 2 After selecting the items to update, select [Installation].



Disk Partitioning

Partitions the disk installed with Windows or the data disks.

Tip TIP

LG Update does not support the disk partitioning function.

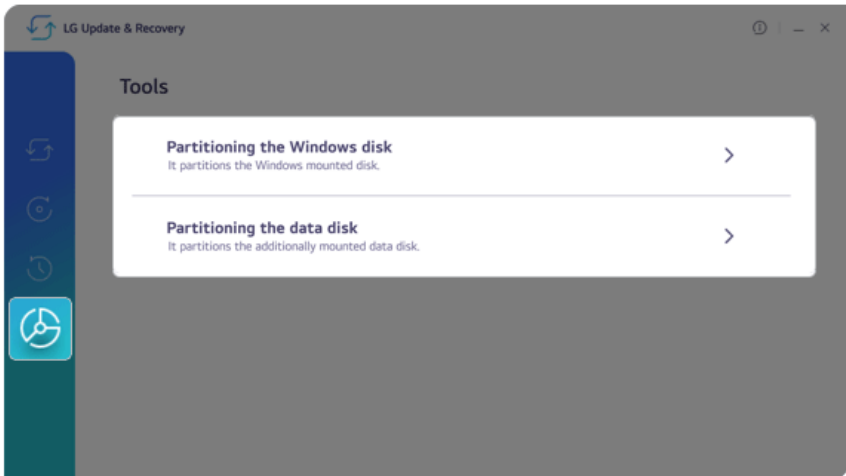
The data disk partitioning function is only available on models with two or more storage devices.



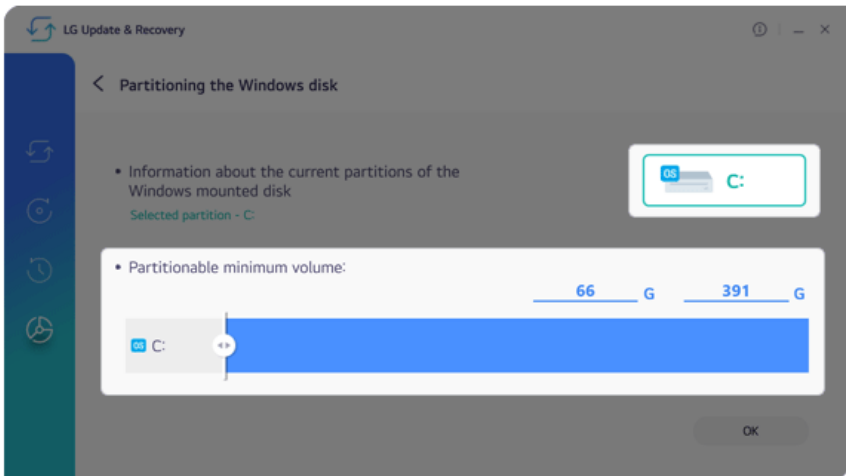
CAUTION

You are encouraged to back up your personal files to avoid data loss when partitioning.

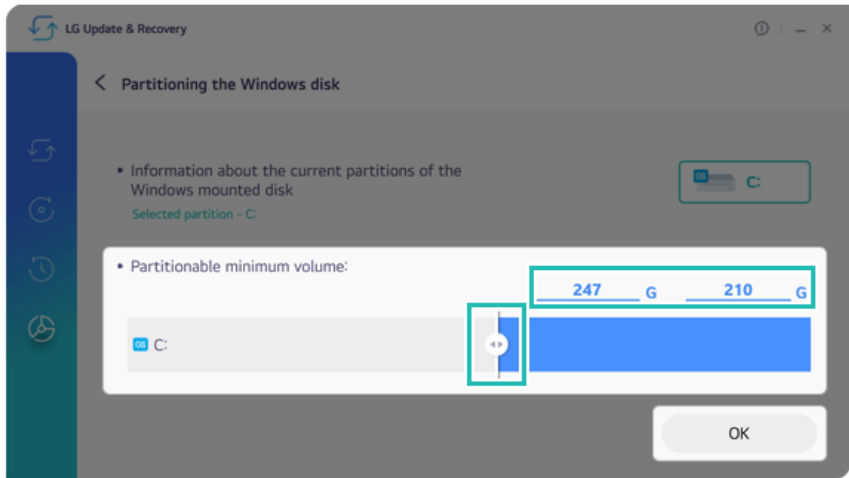
- 1 Select [Partitioning the Windows disk] or [Partitioning the data disk] from the [Tools] menu.



- 2 Select a disk partition to be partitioned, the [Partitionable minimum volume] menu appears.



3 Set the capacity of the disk to be partitioned and select [OK].



4 The disk will be partitioned.


DTS:X Ultra

DTS:X Ultra provides rich, sonorous sound when you listen to music, watch videos or play games in the PC.

DTS:X Ultra may not be applied depending on the model.

The figures herein are subject to change without prior notice.

Running DTS:X Ultra

- 1 Select the Start button [] > [All apps] and run [DTS:X Ultra].
- 2 The default is **Internal Speakers** Mode, and it works in **Headphones** Mode when the earphone is connected.

DTS:X Ultra Tour



- 1 **Power:** DTS:X Ultra Turns the power on/off.
- 2 **Automatic:** Provides an environment that is automatically optimized for the running application.

- 3 **Music:** Provides an optimized environment for music playback.
- 4 **Voice:** Provides an optimized environment for voice playback.
- 5 **Movies:** Provides an optimized environment for movie playback.
- 6 **Strategy, RPG and Shooter:** Provides an optimized environment for each game.
- 7 **Custom Audio:** Selects the spatial model and adjusts the expansion power, and it is optimized for each setting.
- 8 **Device:** Allows you to select the connected earphone/headphone. (Provides headphone mode only)
- 9 **Personalized EQ:** Sets an equalizer optimized for your personal hearing. (Provides headphone mode only)
- 10 **Graphic EQ:** Sets the equalizer.

Tip

If you want to remove Audio Driver or DTS:X Ultra , remove [DTS:X Ultra] and [Realtek(R) Audio Driver] in the order specified and restart the system.

If you want to reinstall Audio Driver or DTS:X Ultra, remove [DTS:X Ultra] and [Realtek(R) Audio Driver] in the order specified and install [Realtek(R) Audio Driver]. Then restart and install [DTS:X Ultra].

- If you do not remove or install them in the order specified, an error may occur.

Virtoo by LG

Virtoo by LG is software that allows you to connect your smartphone and PC to check your phone's notifications, make phone calls, send and receive text messages, use media, use mirroring, etc. on your PC.

Tip TIP

If **Virtoo by LG** is not installed, connect to the **Microsoft Store** and search for **Virtoo by LG**.

Also, your smartphone must have the **Virtoo by LG** app installed.

You can search for and install the **Virtoo by LG** smartphone app from **Google Play** or **App Store**.

It is recommended to disconnect from the app after using on a public PC.

Virtoo by LG's service may be suspended without prior notice due to the company's circumstances.

The app may not work properly on some smartphone models and upgrading the operating system of a smartphone may prevent some features from working properly.

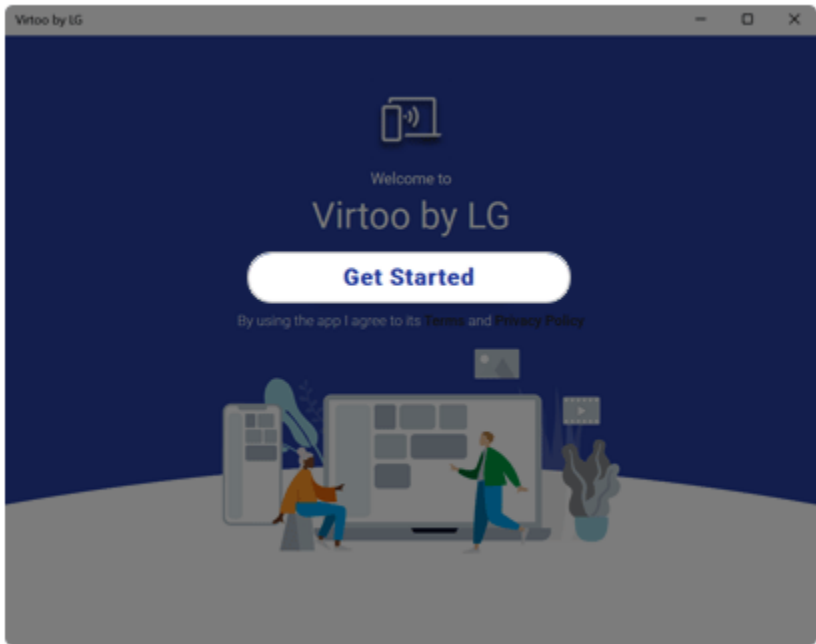
In order to use a dialer with a Microsoft **user's mobile phone**, you need to uninstall **Virtoo by LG** app and driver.

The figures herein are subject to change without prior notice.

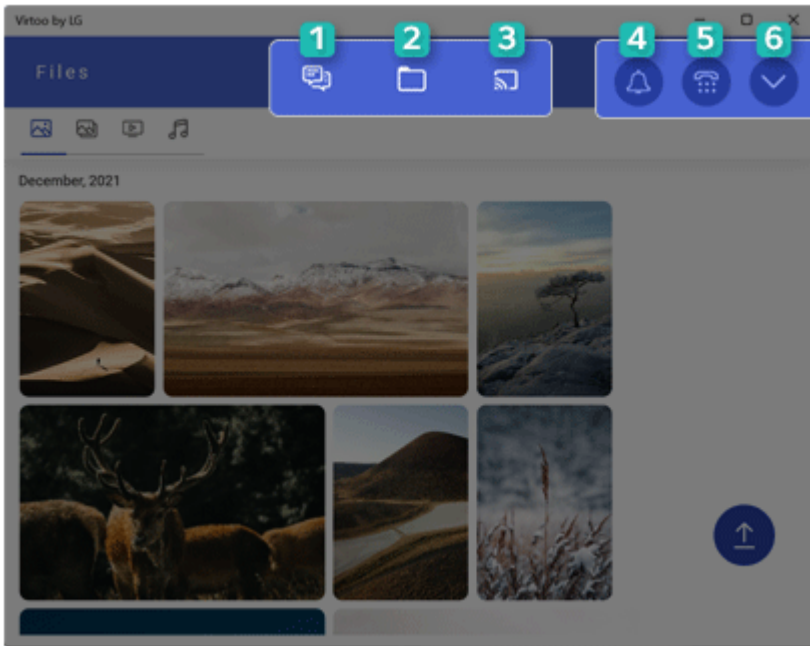
Virtoo by LG Connect

- 1 Select the Start button [] > [All apps] and run [Virtoo by LG].

- 2 Select [Get Started], and then follow the instructions to connect your smartphone to the PC.



Virtoo by LG Tour



- 1 **Messages:** Allows you to send and receive text messages interactively.
- 2 **Files:** Displays files (photos, albums, videos, audio) on your smartphone, and you can share files between your smartphone and the PC.
- 3 **Mirroring:** Allows you to display the screen of the connected smartphone on your PC and access it from the PC.

TIP

Precautions When Typing a Text

Android: You can use the PC keyboard to type characters. You can switch between Korean and English by pressing the [Shift]+ [Space] keys.

iPhone: You can use the PC keyboard to type characters. You can switch between Korean and English by pressing the [Caps Lock] key.

- 4 **Notifications:** You can check your phone's notifications on the **Virtoo by LG** app screen.
- 5 **Dialer:** Allows you to browse the contacts stored in your smartphone and send text or make a phone call to the contacts.

- 6 **Expand:** Allows you to check the battery status of your smartphone and use the Do Not Disturb, Settings, and Disconnect features.

Sharing files (photos, albums, videos, and audio)

Tip TIP

Transferring large files can take some time.


If you want to use the Share File function on your iPhone, you need to connect the iPhone and the PC to the same router.

iPhone does not support the sharing of audio files.

Sending files to your smartphone

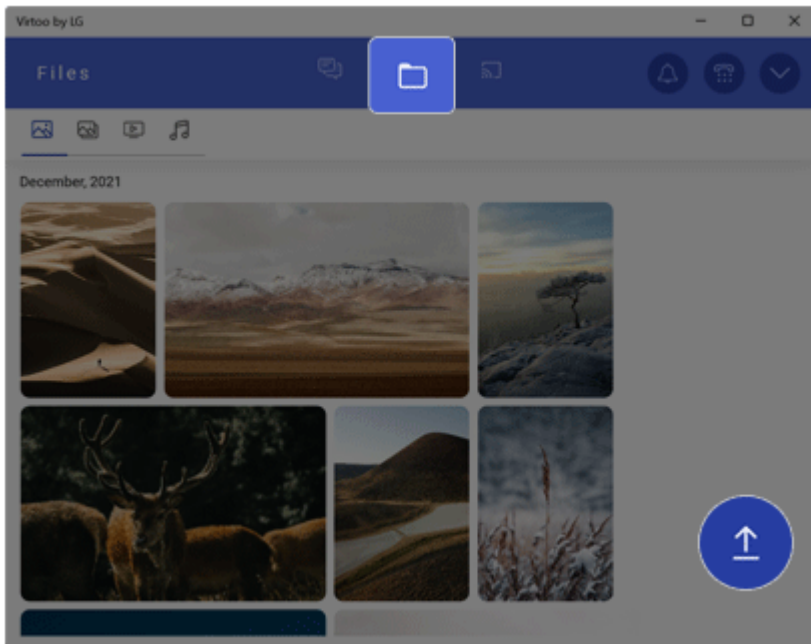
- 1 Select the [Upload] icon from the [Files] menu.

Tip

Android: The transferred files are classified by file type in [] > [My received files] of the **Virtoo by LG** app.

iPhone: The transferred files are saved in the album.

You can drag & drop files to share files from your PC to your smartphone.




- 2 Select the file you wish to send to your smartphone and select [Open].

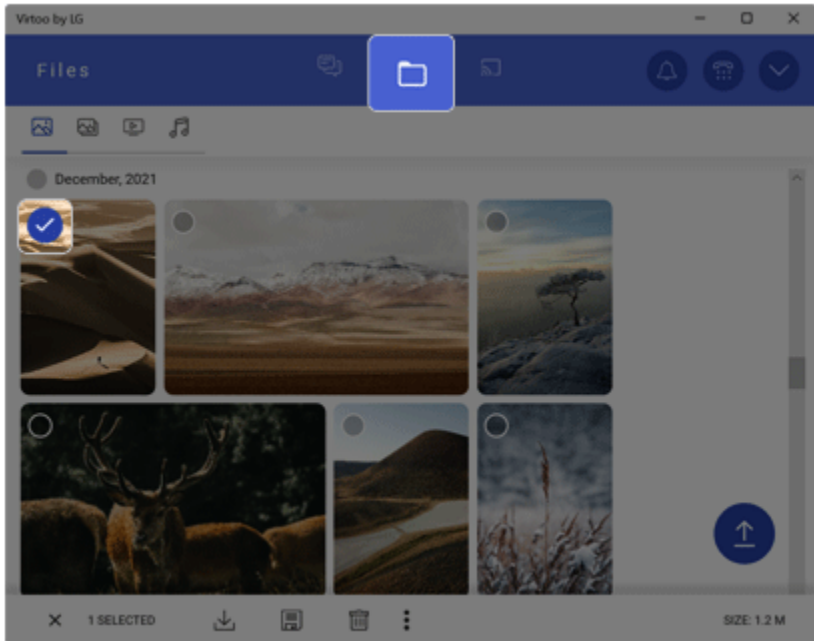
Importing files from your smartphone to your PC

- 1 Select the desired file from the [Files] menu.

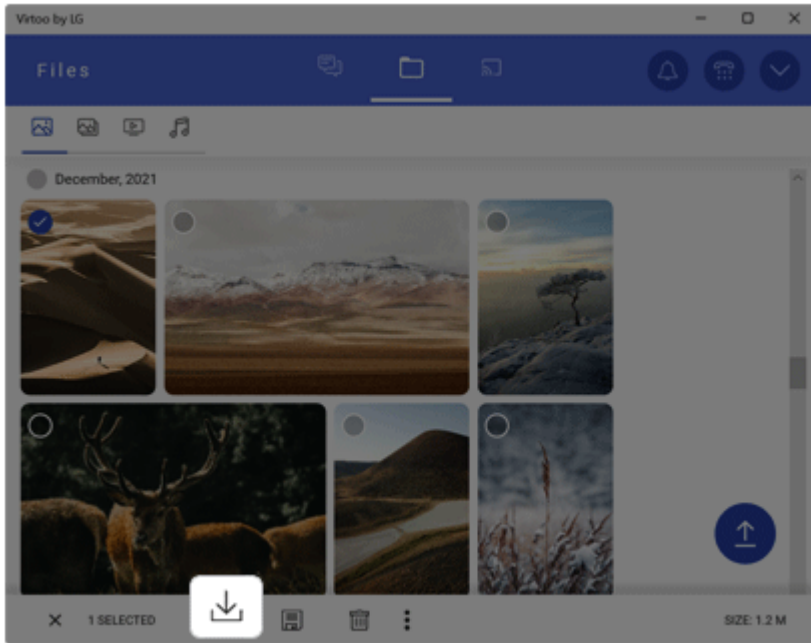
Tip

You can select multiple files to import, and select the [] icon to directly import the files.

Imported files will be saved in [This PC] > [Pictures] > [Virtooo by LG] folder on the PC.

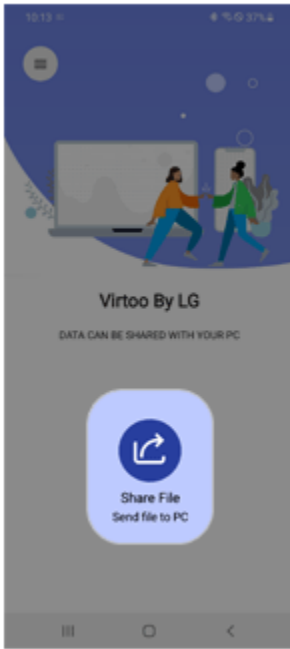


- 2 Select [GET FILE].

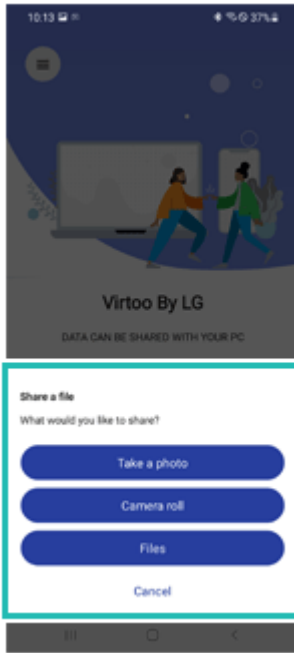


Sending files from your smartphone

- 1 Select [Share File].



- 2 When the [Share File] menu appears, select the desired option to send the file.



File Sharing with Mirroring

Tip TIP

Mirroring must be enabled to use the file sharing with mirroring feature.

Only Android smartphones support the file sharing feature through mirroring.

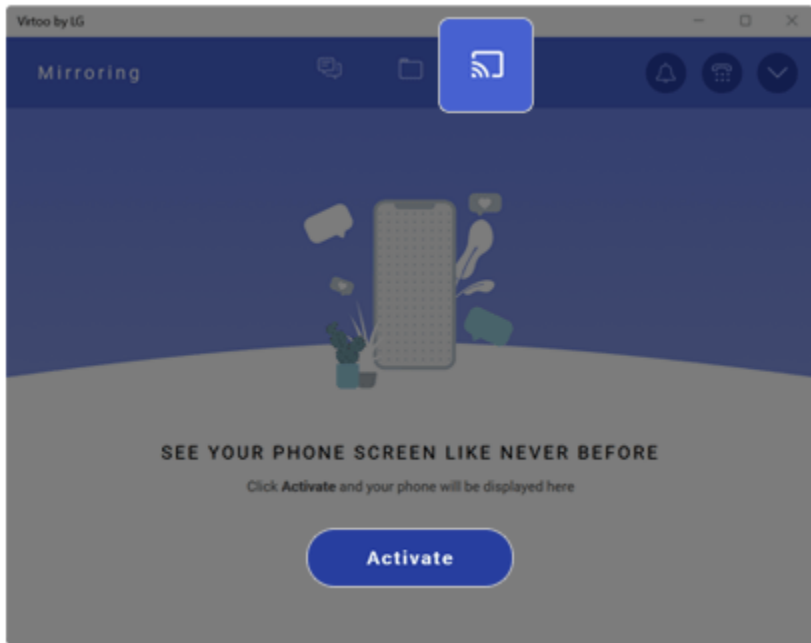
Only one file can be transferred at a time and it may take a while if the file is big.

Depending on the wireless environment, the mirroring screen may suffer a buffering problem or the file transmission speed may be lowered.

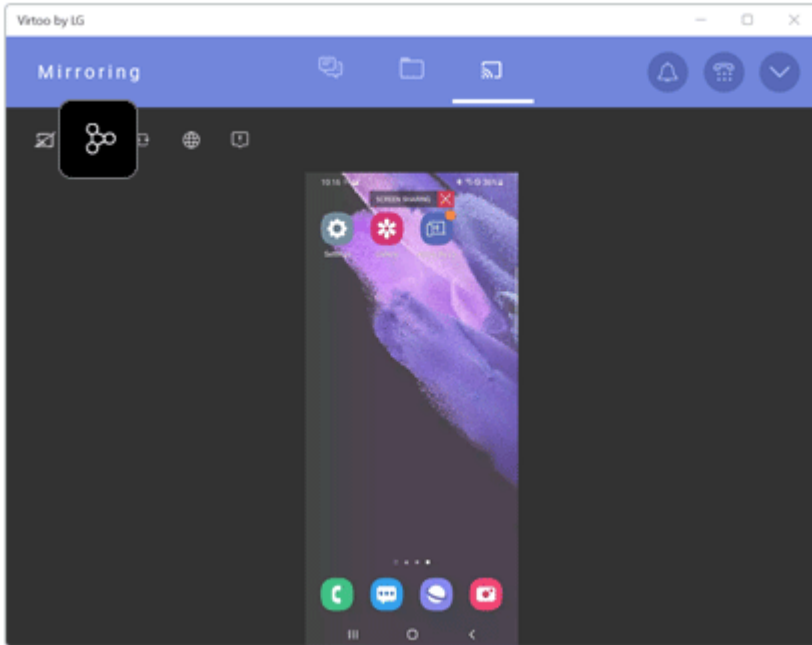
The keyboard and mouse on the PC acts on the smartphone as if Bluetooth keyboard and mouse are connected to it.

You can drag & drop files to share files from your PC to your smartphone.

- 1 Select the [Activate] in the [Mirroring] menu and connect the smartphone to the PC according to the instructions.

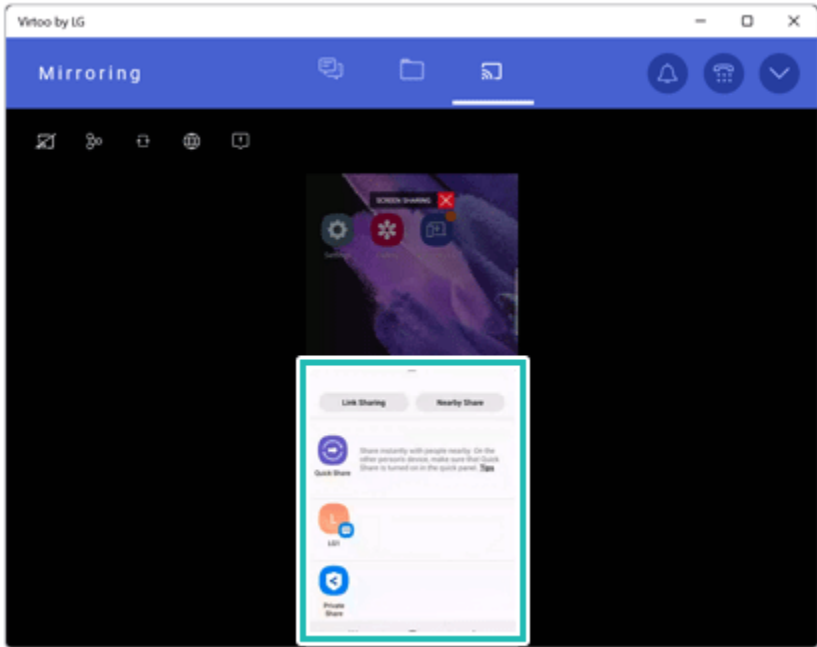


- When the smartphone screen appears on the PC, select the [Share] icon.



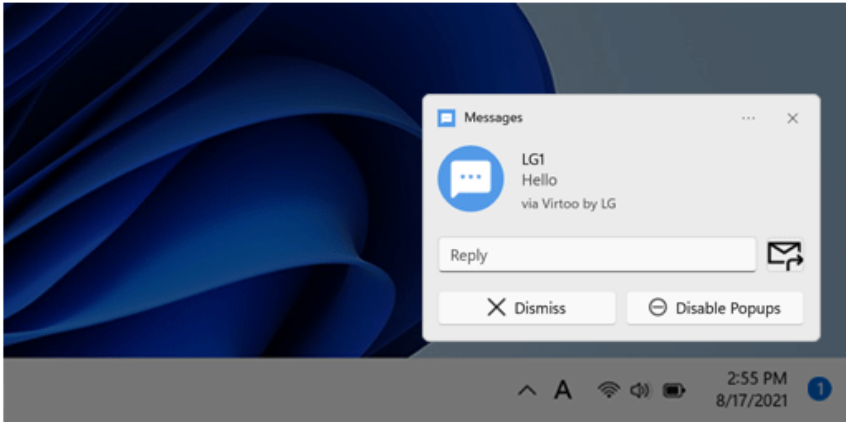
- Select the file you wish to share to your smartphone and select [Open].

- When the Share menu appears on the smartphone, select the desired app to share the file.



Displaying Notification Messages

When your smartphone receives a notification, phone call, text message, app notification message, or email, a notification message is displayed on the PC screen.

**Tip** TIP

If the smartphone notification does not appear on the PC, allow notification access authority of the Virtoo by LG app in the smartphone settings.

- The actual menu structure may differ by smartphone model. Refer to the smartphone manual for more information on menu structure.

Virtoo by LG Update

Some functions may not work properly if the version of an app installed on your PC or mobile device (Android or iPhone) is out of date. You can update your PC and mobile device as below:

Please initialize your app after it is updated.

- PC app: In **Microsoft Store**, search for and update the **Virtoo by LG** app.
- Smartphone app: In **Google Play** or **App Store**, search for and update the **Virtoo by LG** app.

LG Glance by Mirametrix®


LG Glance by Mirametrix® uses AI-based attention detection technology to improve PC productivity and enhance security.

Tip TIP


LG Glance by Mirametrix® basically operates with the power connected, and connecting an external monitor makes it possible to utilize various functions more efficiently.

The figures herein are subject to change without prior notice.

Running LG Glance by Mirametrix®


- 1 Select the Start button [] > [All apps] and run [LG Glance by Mirametrix®].
- 2 The tutorial (help on how-to-use) for LG Glance by Mirametrix® appears.

Exploring LG Glance by Mirametrix®

Select the [] (Show hidden icons) icon on the right side of the taskbar, and then select the [

] icon to run LG Glance by Mirametrix®.

Tip TIP

To always display the LG Glance by Mirametrix® icon [] on the taskbar, right-click on the taskbar, select [Taskbar settings] > [Taskbar Corner overflow], and set [Glance.exe] to [On].



- 1 **Presence Detection:** If the user does not look at the screen or leaves the screen for a certain period of time, the screen is locked or darkened.
- 2 **Snap Window:** (When an external monitor is connected) Click and hold the title bar of the desired window, move your head to the external monitor or the notebook PC screen to move the window to the screen you are looking at.
- 3 **Smart Pointer:** (When an external monitor is connected) Move your head to the external monitor or the notebook PC screen to move the mouse pointer to the screen you are looking at.
- 4 **Smart Display:** (When an external monitor is connected) Dims the screen of an external monitor or the notebook PC screen that the user is not looking at.
- 5 **Privacy Guard:** Blurs the notebook PC screen if someone is looking at your screen from behind.
- 6 **Privacy Alert:** Alerts you with an icon if someone is looking at your screen from behind.
- 7 **Smart Player:** Pauses the audio or video playback of a specific app when the user is away and automatically resumes playback when the user returns.
- 8 **Digital Wellness:** Tells you to look at an object far away for 20 seconds every 20 minutes to protect your eyesight. If you crouch too close to the screen, it tells you to correct your posture.
- 9 **Video Conferencing:** (During video conferencing) Displays a video of the presenter on the Desktop or automatically mutes the microphone when the user moves away from the screen. **Virtual Camera** hides the background of the camera or automatically adjusts the frame of the camera

according to the user's movement and compensates the face or the lighting to make your face look more beautiful.

- 10 **Settings:** Provides the settings menu and tutorial (help on how to use) of LG Glance by Mirametrix®.

PCmover Professional

PCmover Professional transfers applications, files (pictures, music, videos, and documents) and settings from your old PC to your new PC.


Tip TIP

The old and new PCs must be connected under the same network.

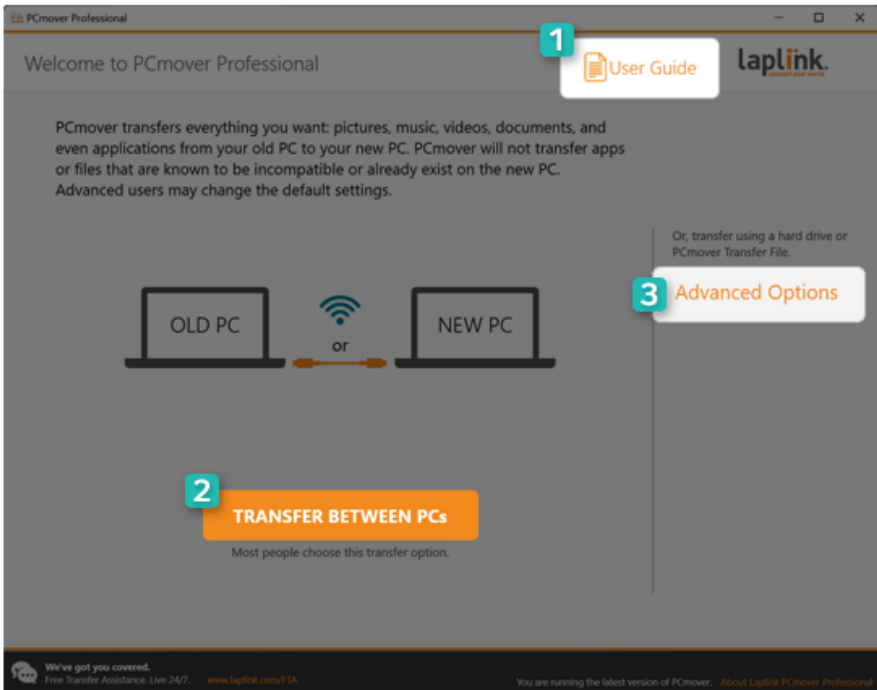
For details on how to use **PCmover Professional**, see the [User Guide] of **PCmover Professional**.

The figures herein are subject to change without prior notice.

PCmover Professional Running

Select the Start button [] > [All apps] and run [PCmover Professional].

PCmover Professional Tour



- 1 **User Guide:** You can find out more about how to use **PCmover Professional**.
- 2 **TRANSFER BETWEEN PCs:** Starts the process of transferring data (apps, files, settings, etc.) between the old PC and the new PC.
- 3 **Advanced Options:** Allows you to create a transfer file on an external media (USB disk, etc.) and transfer it to a new PC, or to transfer it to a new PC using a disk image backed up from the old PC. Also, you can transfer apps, files and settings between user accounts of the same PC.

Recovering the System

Backing up/Recovering My Windows

You can back up and recover the disk partition where Windows is installed.

This content only applies to the models provided with LG Update & Recovery.



CAUTION


Partitions other than the disk partition where Windows is installed are not backed up.
For backup or recovery, the AC adapter must be connected to the PC.

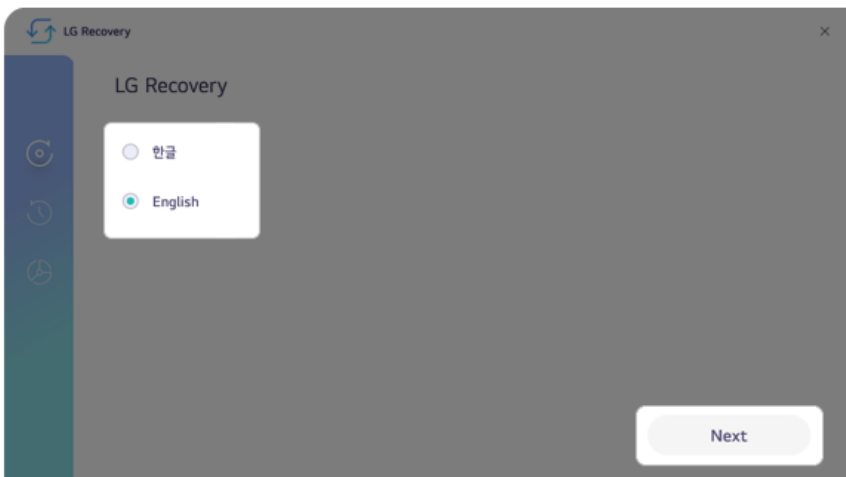


TIP

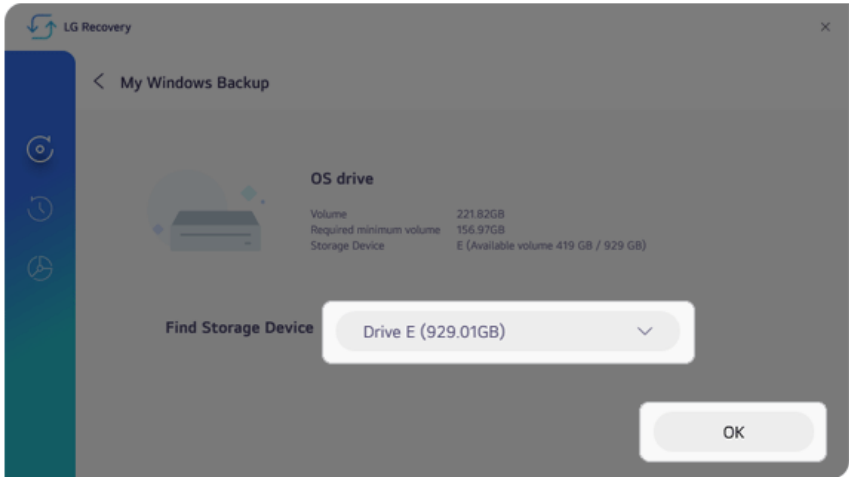
You can perform backup only on an external disk (USB memory, HDD, etc.).

My Windows Backup

- 1 Connect the external disk where the backup file will be saved to the PC.
- 2 Select the Start button [] > [All apps] and run [LG Update & Recovery].
- 3 Select [Backup] > [My Windows Backup] > [OK] to reboot the PC.
- 4 When the [LG Recovery] screen appears, check the language you want to use and select [Next].



- 5 Select [Backup] > [My Windows Backup].
- 6 Select the external disk and click [OK].




- 7 When the backup is complete, click [OK].
- 8 Select the Exit button [X] to reboot the PC.

My Windows Recovery



CAUTION

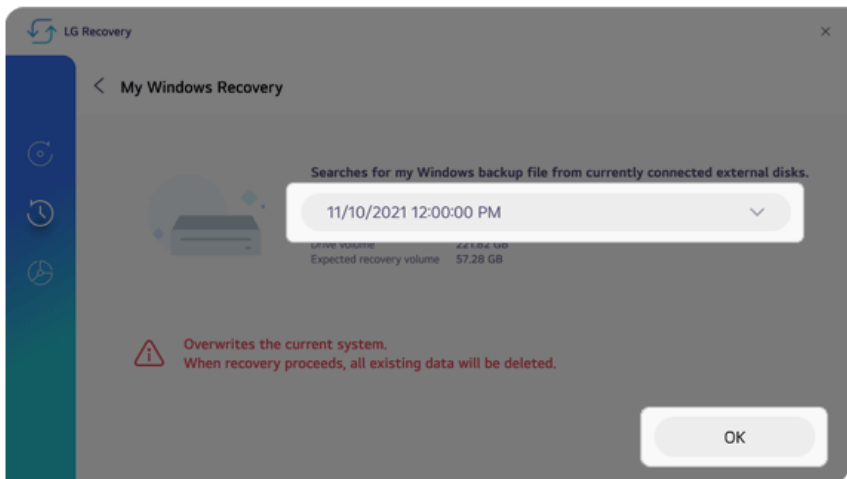
All user data on the partition where Windows is installed will be deleted, so you must backup all important data in advance.

- 1 Connect the external disk where the backup file is saved to the PC.
- 2 Select the Start button [] > [All apps] and run [LG Update & Recovery].
- 3 Select [Recovery] > [My Windows Recovery] > [OK] to reboot the PC.

- 4 When the [LG Recovery] screen appears, check the language you want to use and select [Next].



- 5 Select [Recovery] > [My Windows Recovery].
- 6 Select the backup file on the external disk and click [OK].



- 7 When the recovery is complete, click [OK].

- 8 Select the Exit button [X] to reboot the PC.

Backing up/Recovering Disk

You can back up and recover the entire disk (all partitions) where Windows is installed.

This content only applies to the models provided with LG Update & Recovery.



CAUTION


For backup or recovery, the AC adapter must be connected to the PC.

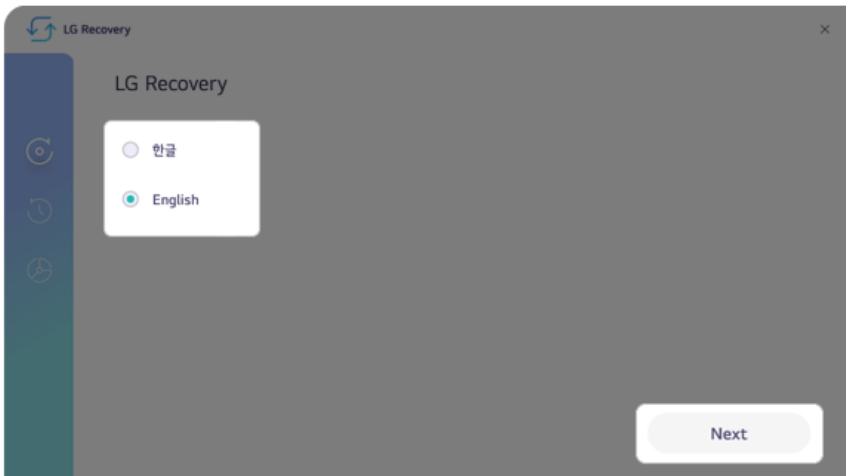


TIP

You can perform backup only on an external disk (USB memory, HDD, etc.).

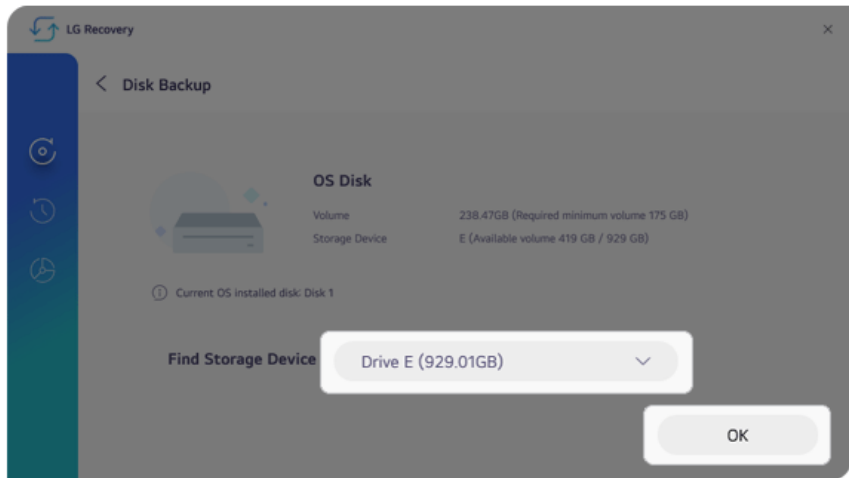
Disk Backup

- 1 Connect the external disk where the backup file will be saved to the PC.
- 2 Select the Start button [] > [All apps] and run [LG Update & Recovery].
- 3 Select [Backup] > [Disk Backup] > [OK] to reboot the PC.
- 4 When the [LG Recovery] screen appears, check the language you want to use and select [Next].



- 5 Select [Backup] > [Disk Backup].

- 6 Select the external disk and click [OK].



- 7 When the backup is complete, click [OK].
- 8 Select the Exit button [X] to reboot the PC.


Disk Recovery



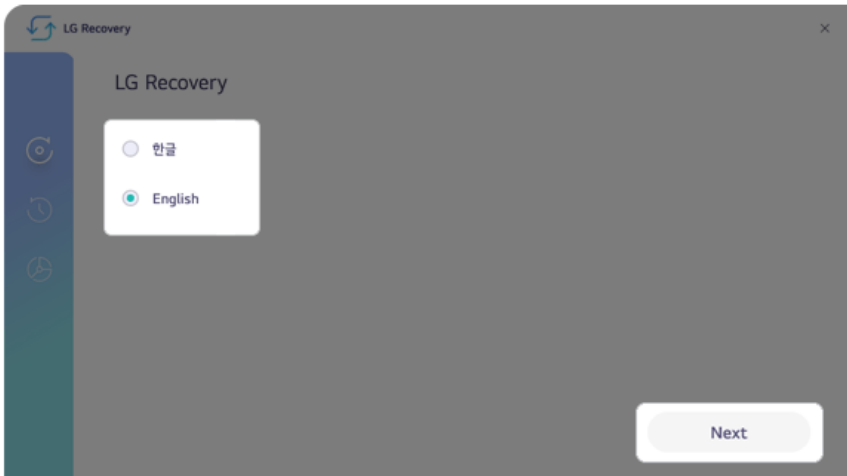
CAUTION

All user data on the disk to be recovered will be deleted, so you must back up all important data in advance.

Recovering a disk other than the one where Windows is installed will result in the deletion of user data on all disks.

- 1 Connect the external disk where the backup file is saved to the PC.
- 2 Select the Start button [] > [All apps] and run [LG Update & Recovery].
- 3 Select [Recovery] > [Disk Recovery] > [OK] to reboot the PC.

- 4 When the [LG Recovery] screen appears, check the language you want to use and select [Next].



- 5 Select [Recovery] > [Disk Recovery].
- 6 Select the backup file on the external disk and the disk to recover, and click [OK].



- 7 When the recovery is complete, click [OK].

- 8 Select the Exit button [X] to reboot the PC.

Backing up/Recovering Data

You can back up and recover the data in the Downloads, Videos, Documents, Desktop, Photos and Music folders in Windows.

This content only applies to the models provided with LG Update & Recovery.



CAUTION

Any data other than those in these folders are not backed up/recovered.

All user data on the disk to be recovered may be deleted, so you must back up all important data in advance.


For backup or recovery, the AC adapter must be connected to the PC.

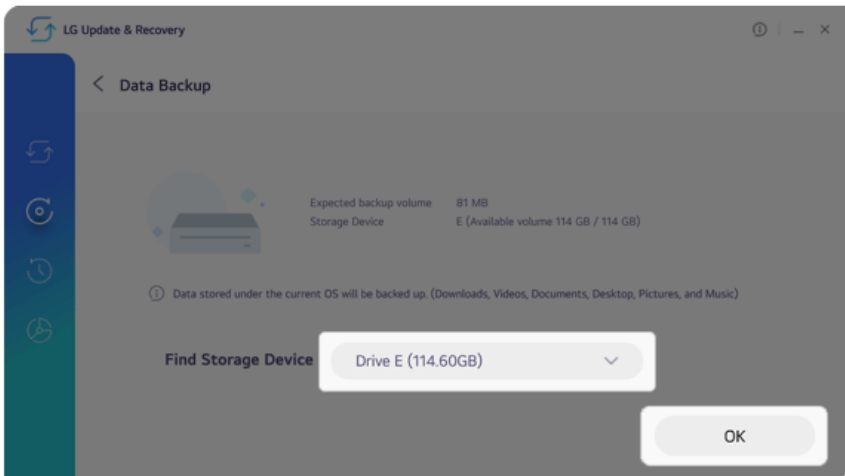


TIP

You can perform backup only on an external disk (USB memory, HDD, etc.).


Data Backup

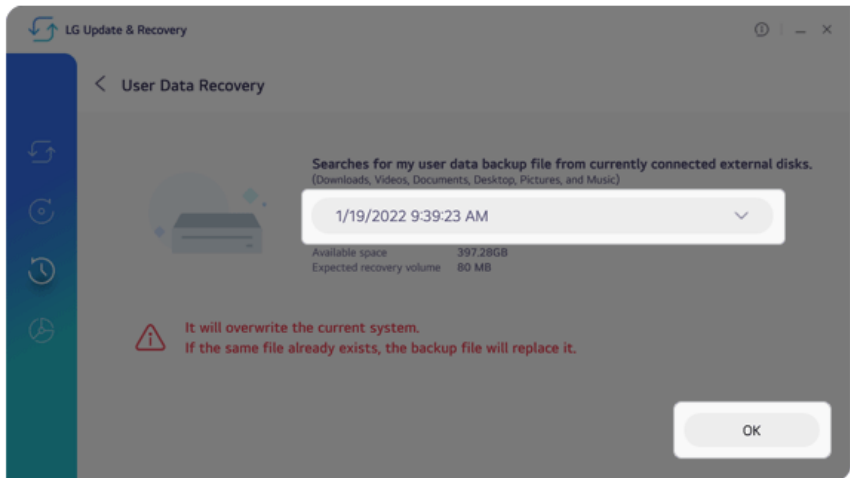
- 1 Connect the external disk where the backup file will be saved to the PC.
- 2 Select the Start button [] > [All apps] and run [LG Update & Recovery].
- 3 Select [Backup] > [Data Backup].
- 4 Select the external disk and click [OK].



- 5 When the backup is complete, click [OK].

Data Recovery

- 1 Connect the external disk where the backup file is saved to the PC.
- 2 Select the Start button [] > [All apps] and run [LG Update & Recovery].
- 3 Select [Recovery] > [User Data Recovery].
- 4 Select the backup file on the external disk and click [OK].



- 5 When the recovery is complete, click [OK].

Factory Reset


This function resets your PC to the factory default state at the time of purchase.

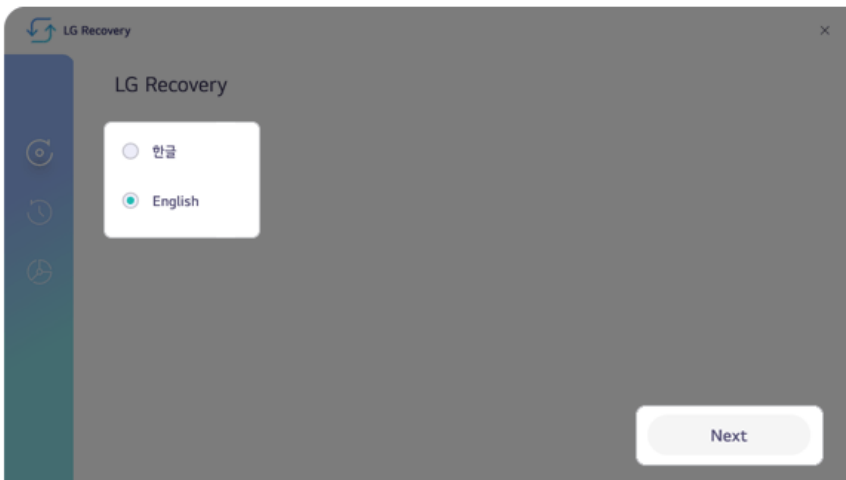
This content only applies to the models provided with LG Update & Recovery.



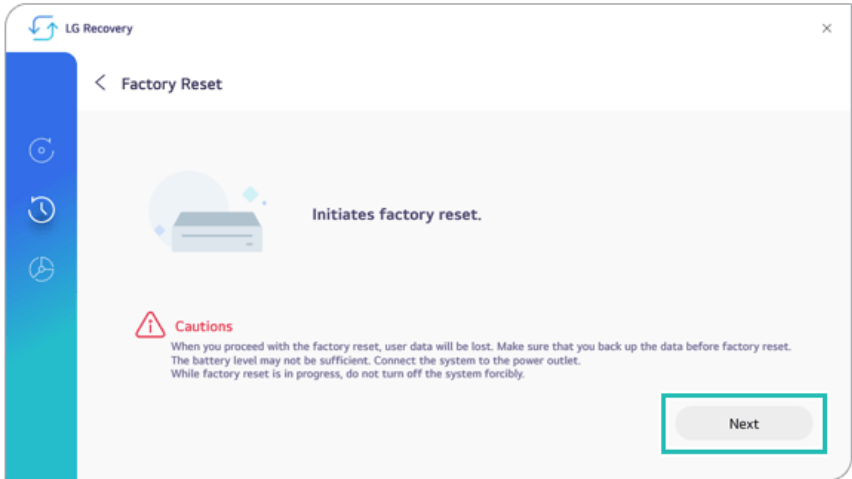
CAUTION

All data is lost during the initialization so you must backup all critical data in advance.
For factory reset, the AC adapter must be connected to the PC.

- 1 Select the Start button [] > [All apps] and run [LG Update & Recovery].
- 2 Select [Recovery] > [Factory Reset] > [OK] to reboot the PC.
- 3 When the [LG Recovery] screen appears, check the language you want to use and select [Next].



- 4 Select [Recovery] > [Factory Reset] > [Next] to execute the factory reset.



- 5 When the factory reset is complete, click [OK] to reboot the PC.

Creating Recovery Disk

Once you create a recovery disk, you can use **LG Recovery** to recover the system even when the system fails to boot due to a problem.

This content only applies to the models provided with LG Update & Recovery.




CAUTION

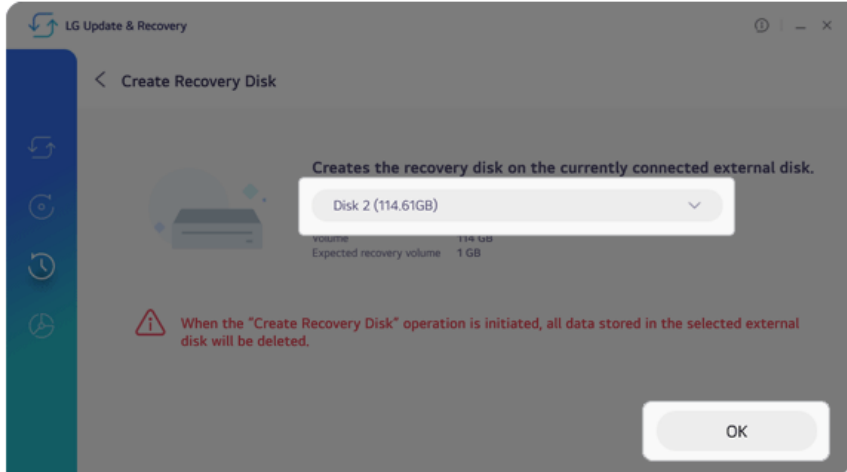
Creating a recovery disk will delete all data on the external disk, so please back up important data in advance.



TIP

You can create the recovery disk only on an external disk (USB memory, HDD, etc.).

- 1 Select the Start button [] > [All apps] and run [LG Update & Recovery].
- 2 Select [Recovery] > [Create Recovery Disk].
- 3 Select the external disk and click [OK].



- 4 Once the recovery disk has been created, click [OK].

Recovering from a Boot Failure

If the system cannot boot due to a serious error with the system, you can recover the system using the method shown below.

This content only applies to the models provided with LG Update & Recovery.



CAUTION

All data is lost during the initialization so you must backup all critical data in advance.

For recovery, the AC adapter must be connected.

If you have deleted the recovery data in the protected area of the hard disk, the recovery function may not work.



TIP

You can create the recovery disk only on an external disk (USB memory, HDD, etc.).

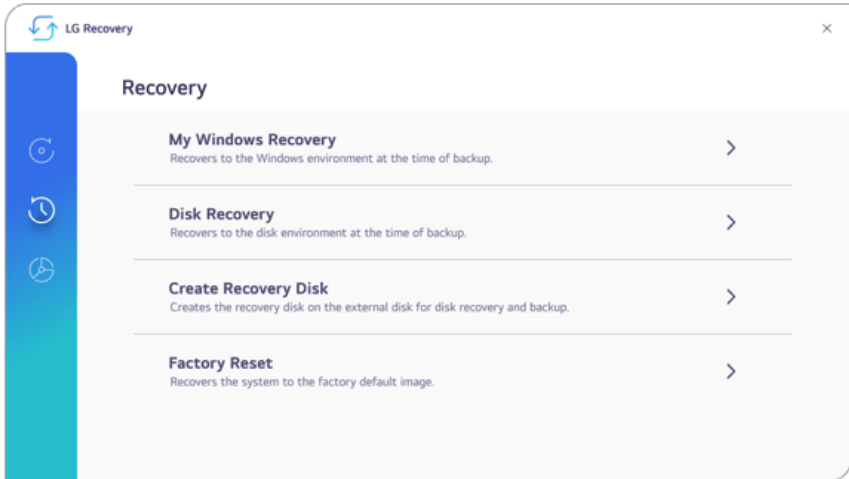
- 1 Turn on the PC and press [F11] multiple times.
- 2 When the **[LG Recovery]** screen appears, check the language you want to use and select [Next].



- In [Recovery], select the desired recovery method to recover the system.

TIP

[My Windows Recovery] or [Disk Recovery] can be performed only when you have the backup data. If you have no backup data, you can recover it through [Factory Reset].



Using Recovery Disk

If you can't execute **LG Recovery**, you can recover your system with a recovery disk.

- Connect the recovery disk to your PC.
- Turn on the PC and press [F10] multiple times.
- When the screen for selecting the boot device appears, select the connected recovery disk and press [Enter].

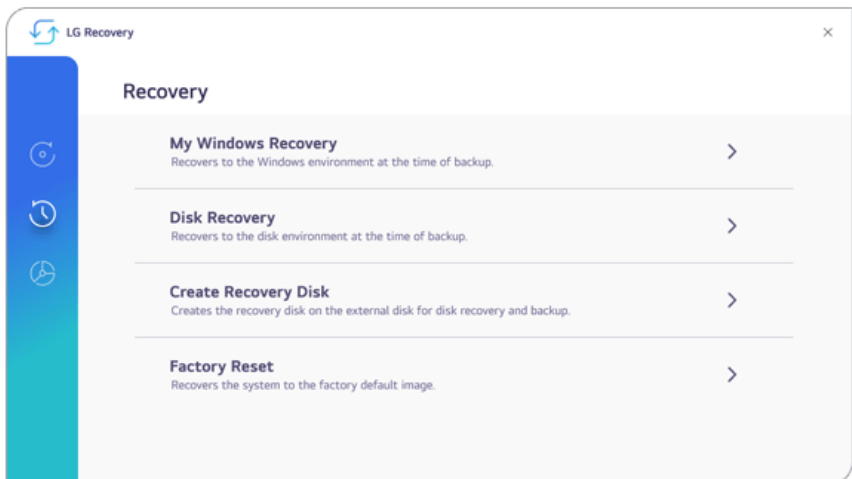
- 4 When the [LG Recovery] screen appears, check the language you want to use and select [Next].



- 5 In [Recovery], select the desired recovery method to recover the system.

Tip TIP

[My Windows Recovery] or [Disk Recovery] can be performed only when you have the backup data. If you have no backup data, you can recover it through [Factory Reset].




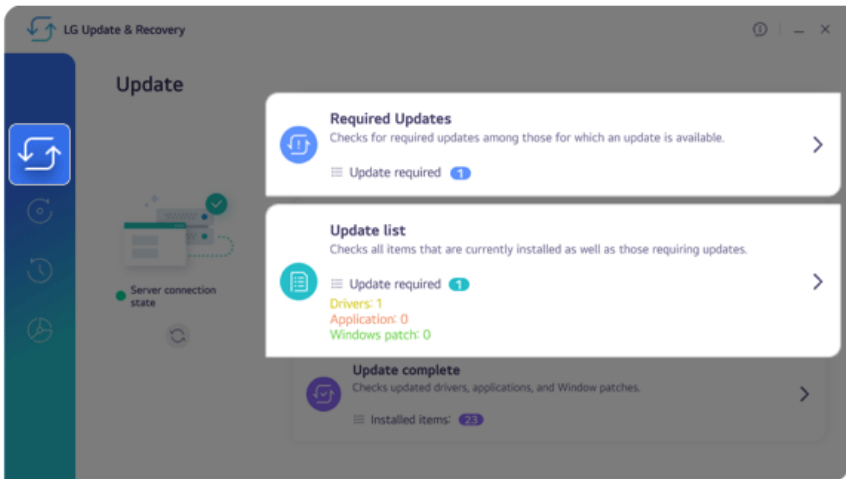
Setup and Upgrade

Installing the Driver

The figures herein may differ by language selection and are subject to change without prior notice.

Using **LG Update & Recovery** (or **LG Update**) to Install the Drivers

- 1 Select the Start button [] > [All apps] and run [**LG Update & Recovery**] or [**LG Update**].
- 2 Select [**Required Updates**] or [**Update List**] to install the driver.



Tip TIP

You can use **LG Update & Recovery** (or **LG Update**) to install the deleted drivers or the latest drivers easily and quickly.

Use **LG Update & Recovery** (or **LG Update**) to keep your system current and optimized.

Downloading **LG Update & Recovery** (or **LG Update**)

You can download and install **LG Update & Recovery** (or **LG Update**) from LG Electronics website (www.lg.com).

Starting System Setup

System setup means storing the hardware configuration information of the PC in the flash memory. Through system setup, the PC retrieves various information including current date and time, memory capacity, and storage device (HDD, SSD, eMMC) capacity and type.

You setup the system when you set passwords, change the boot order, and add new peripheral devices to the machine.

Items displayed on the Setup screen may differ by model type and specification.

TIP

To use the system setup (F2), booting device selection (F10), or recovery (F11), you need to restart the system (click [Restart] in the system power menu) and then immediately press the corresponding function key due to the fast booting speed.



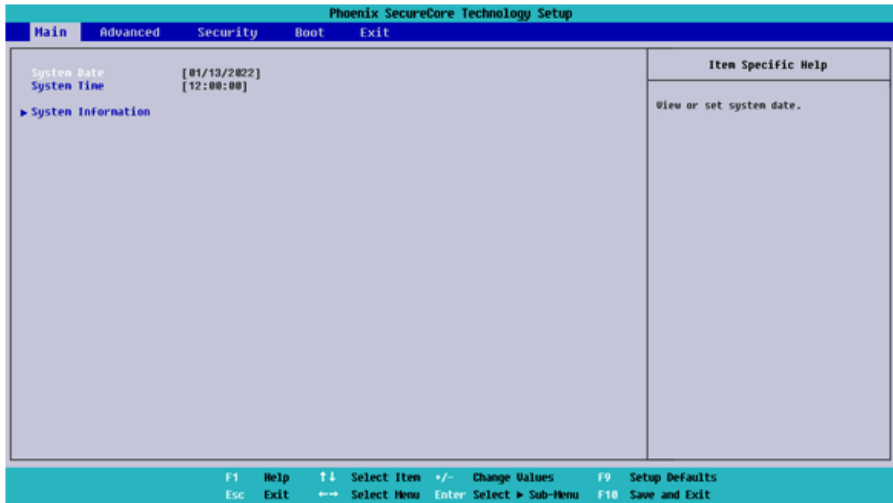
CAUTION

- Do not change the system setup unless necessary. Incorrect system setup may cause errors during system operation. Use caution when changing the system setup.
- For performance improvement, the system setup menu configuration and the initial setup status may be changed and may become different from images included in the user manual.

- 1 Reboot the system and press [F2] multiple times.



- 2 In a few moments, the system setup screen appears.



Keys Used in System Setup

Keys	Function
Enter	Selects the current item.
Esc	To deselect the current item or to move to the previous screen.
▲, ▼, ◀, ▶ (Arrow keys)	Moves the cursor up, down, left, and right.
+, -	Increases or decreases the item value.
F10	Saves the new settings or exits the system setup.

Setting the Boot Password

This process is to set a password so that other people cannot use the computer or change the settings.

The user can set a password while booting the system or setting up the system.

The model in the example can differ from actual models and is subject to change for performance improvements, without prior notice.



CAUTION

Without the registered password, access to the system will be denied. Write down and keep the password in a safe place.

Set Supervisor Password

The password prevents unauthorized people from accessing the PC. By default, no password is set for the machine. If an unauthorized person changes the password in the System Setup, you will be unable to access the system.



TIP

With **[Set Supervisor Password]**, you are authorized to set all items in the System Setup and to set **[Password on boot]**. In case other people also use the computer, it is recommended to set the **[Set User Password]**.

- 1 Reboot the system and press [F2] multiple times.



- 2 When the System Setup screen appears, go to **[Security]** > **[Set Supervisor Password]** using the arrow keys and press the [Enter] key.



- 3 When the Password Setting screen appears, enter a password and press the [Enter] key. The password should not exceed 12 characters and should consist of English letters (A - Z), numbers (0 - 9), and special characters or a combination of them.



- 4 When a pop-up window appears, press the [Enter] key.



- 5 To save the changes in system setup, press [F10]. When a pop-up window appears, select [Yes] and press the [Enter] key.



- 6 The PC will restart.

Set User Password

The password set in [Set User Password] is of a lower level than the one set in [Set Supervisor Password], so you can set a user password only after setting a password in [Set Supervisor Password].

Tip TIP

[Set User Password] allows limited access to the items in the System Setup screen compared to the [Set Supervisor Password] items.

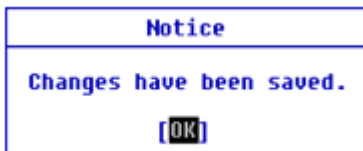
- 1 Execute the System Setup screen, go to **[Security]** > **[Set User Password]** using the arrow keys and press the **[Enter]** key.



- 2 When the Password Setting screen appears, enter a password and press the **[Enter]** key. The password should not exceed 12 characters and should consist of English letters (A - Z), numbers (0 - 9), and special characters or a combination of them.



- 3 When a pop-up window appears, press the **[Enter]** key.



- To save the changes in system setup, press [F10]. When a pop-up window appears, select **[Yes]** and press the [Enter] key.



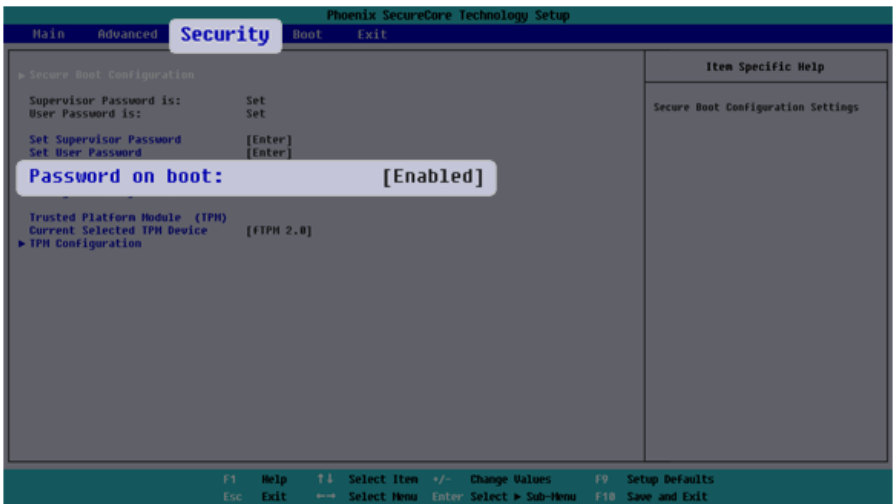
- The PC will restart.

Password on boot

[Password on boot] protects your system by requiring during booting to enter the password set in **[Set Supervisor Password]** or **[Set User Password]**.

To set **[Password on boot]**, you first need to set **[Set Supervisor Password]** or set both **[Set Supervisor Password]** and **[Set User Password]**.

- Execute the System Setup screen, go to **[Security]** > **[Password on boot]** using the arrow keys and press the [Enter] key.



- Select **[Enabled]** and press the [Enter] key to complete the **[Password on boot]** setting.

Storage Security Features

The password for **[Storage Security Features]** is to set the password directly on the storage device separately from **[Set Supervisor Password]**.

Tip TIP

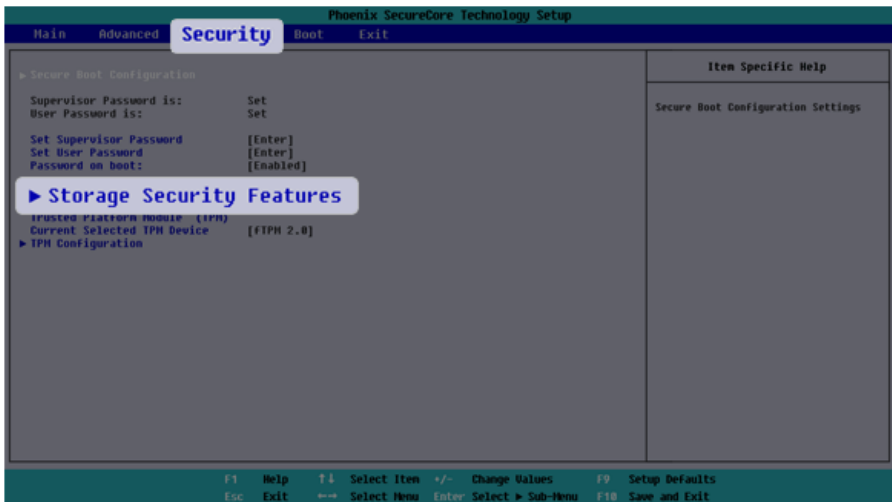
- Some models with built-in NVMe™ may not support the password setting function.
- For the models equipped with two NVMe devices, you can set a password for each device. If passwords are set for both devices, the password input window appears twice during the booting process. The order in which the password input windows appears is according to the **[Boot Priority Order]** of the **[Boot]** menu.

CAUTION

If you lose the password for **[Storage Security Features]**, you cannot recover the storage device.

- Please note that the replacement of the storage device due to the loss of the password for **[Storage Security Features]** is excluded from the product warranty.

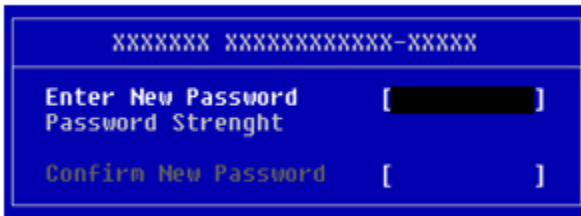
- 1 Execute the System Setup screen, go to **[Security]** > **[Storage Security Features]** using the arrow keys and press the **[Enter]** key.



- Go to the desired device and press the [Enter] key.



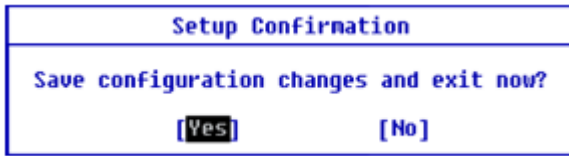
- Press the [Enter] key in **[Set Password]**.
- When the Password Setting screen appears, enter a password and press the [Enter] key. The password should not exceed 12 characters and should consist of English letters (A - Z), numbers (0 - 9), and special characters or a combination of them.



- When a pop-up window appears, press the [Enter] key.



- 6 To save the changes in system setup, press [F10]. When a pop-up window appears, select **[Yes]** and press the [Enter] key.



- 7 The PC will restart.

Deleting/Changing the Boot Password

You can delete or change the password only after entering the current password.

The model in the example can differ from actual models and is subject to change for performance improvements, without prior notice.

Changing the Boot Password

- 1 Execute the System Setup screen, enter the password, and press the [Enter] key.



- 2 Change the password in the same way as setting one.

Deleting the Boot Password

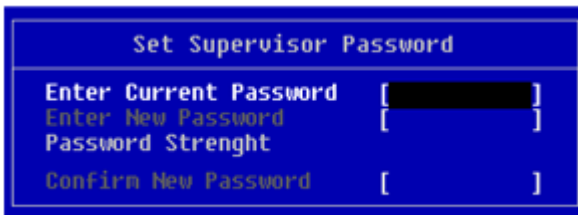
- 1 Execute the System Setup screen, enter the password, and press the [Enter] key.



- 2 When the System Setup screen appears, go to **[Security]** > **[Set Supervisor Password]** using the arrow keys and press the **[Enter]** key.



- 3 When the Password Setting screen appears, enter the current password in the **[Enter Current Password]** field.



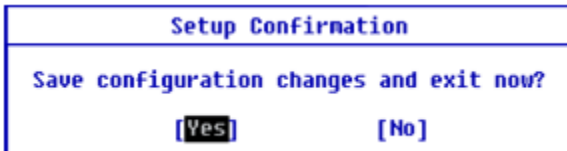
- 4 Press the [Enter] key in **[Enter New Password]** and again in **[Confirm New Password]**.



- 5 When a pop-up window appears, press the [Enter] key.



- 6 To save the changes in system setup, press [F10]. When a pop-up window appears, select **[Yes]** and press the [Enter] key.



- 7 The PC will restart.

Deleting the Boot Password (Storage Security Features)

- 1 Execute the System Setup screen, enter the password, and press the [Enter] key.



- 2 When the System Setup screen appears, go to **[Security]** > **[Storage Security Features]** using the arrow keys and press the [Enter] key.



- 3 Go to the desired device and press the [Enter] key.



- 4 Press the [Enter] key in **[Set Password]**.

- 5 When the Password change screen appears, enter the current password in the **[Enter Current Password]** field.



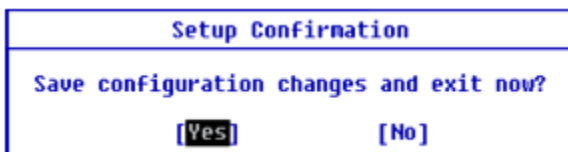
- 6 Press the [Enter] key in **[Enter New Password]** and again in **[Confirm New Password]**.



- 7 When a pop-up window appears, press the [Enter] key.



- 8 To save the changes in system setup, press [F10]. When a pop-up window appears, select **[Yes]** and press the [Enter] key.



9 The PC will restart.

Initializing System Setup

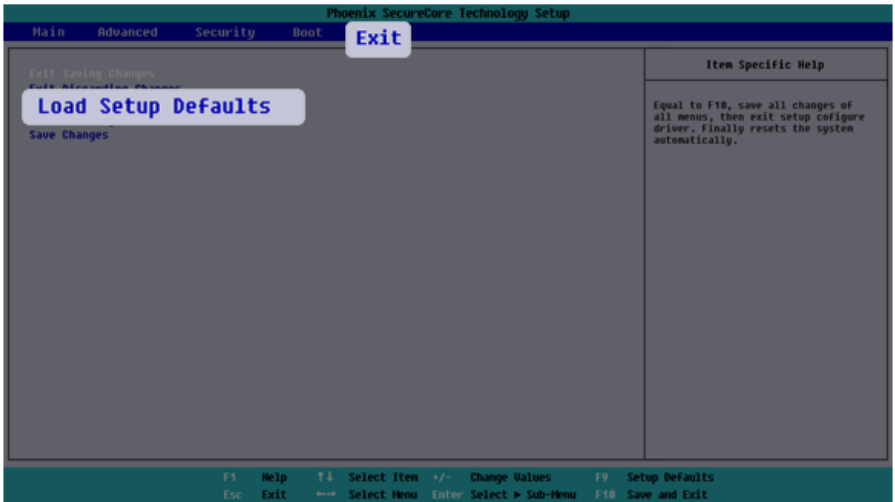
If you have changed the system setup by mistake, you can restore the default settings.

The model in the example can differ from actual models and is subject to change for performance improvements, without prior notice.

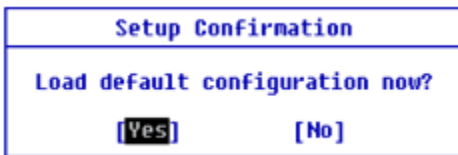
- 1 Execute the System Setup screen, go to **[Exit]** > **[Load Setup Defaults]** using the arrow keys and press the **[Enter]** key.

Tip **TIP**

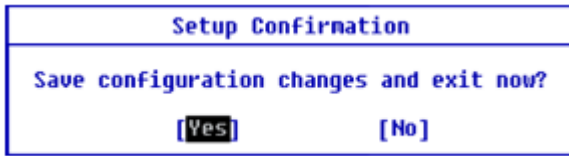
You can press the **[F9]** key to use the **[Load Setup Defaults]** item.



- 2 When a pop-up window appears, select **[Yes]** and press the **[Enter]** key. The settings will be reset to the factory default.



- To save the changes in system setup, press [F10]. When a pop-up window appears, select **[Yes]** and press the [Enter] key.



- The PC will restart.

Changing the Boot Order

The user can change the boot order according to his or her needs, or select a boot device

The model in the example can differ from actual models and is subject to change for performance improvements, without prior notice.

TIP

To use the system setup (F2), booting device selection (F10), or recovery (F11), you need to restart the system (click **[Restart]** in the system power menu) and then immediately press the corresponding function key due to the fast booting speed.

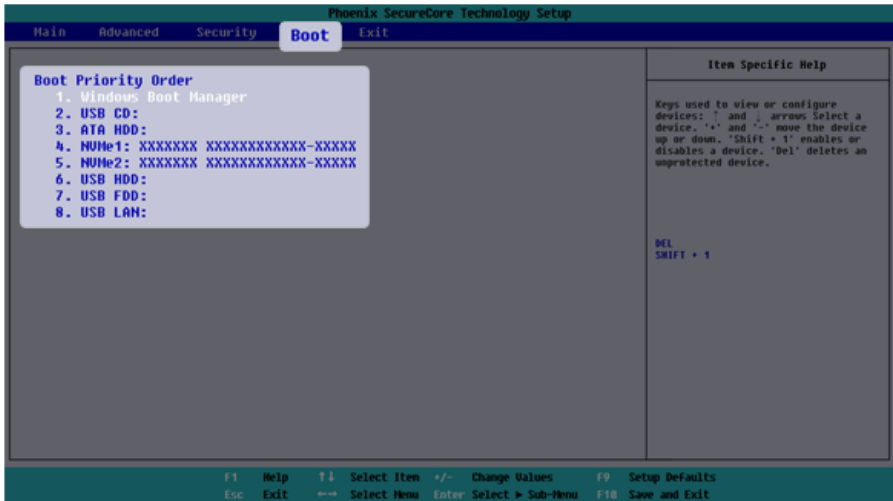
Changing the Boot Order

- 1 Reboot the system and press [F2] multiple times.

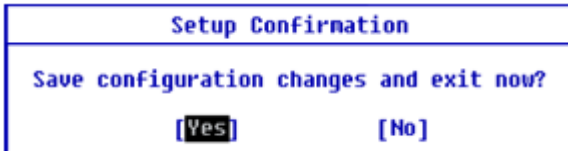


- 2 Go to the **[Boot]** menu using the arrow keys when the system setup screen appears.

- 3 Go to **[Boot Priority Order]** and press **[F5]** or **[F6]** to change the booting order.



- 4 To save the changes in system setup, press **[F10]**. When a pop-up window appears, select **[Yes]** and press the **[Enter]** key.



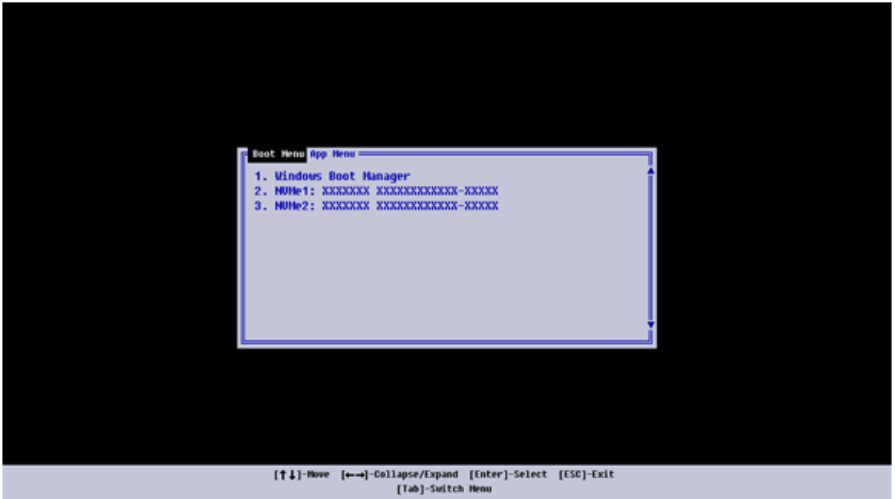
- 5 The PC will restart.

Selecting a Booting Device to Use

- 1 Reboot the system and press [F10] multiple times.



- 2 When the Select Boot Device screen appears, go to the desired device using the arrow keys and press the [Enter] key.



3 Boots using the selected device.


Setting Auto Scaling

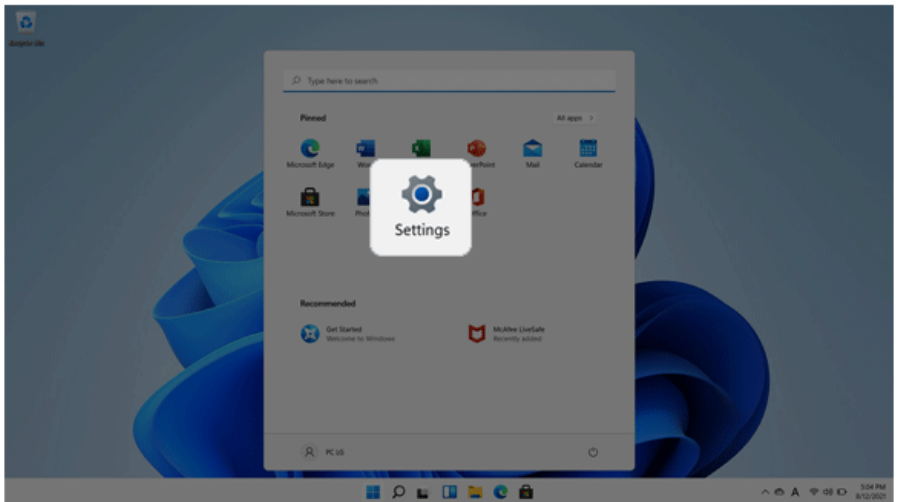
The Windows **Auto Scaling** feature for user's convenience may partially blur the screen or display some icons and texts larger.

Refer to the following information to change the DPI scaling to suit your needs.

- 1 Select the Start button [] > [Settings].

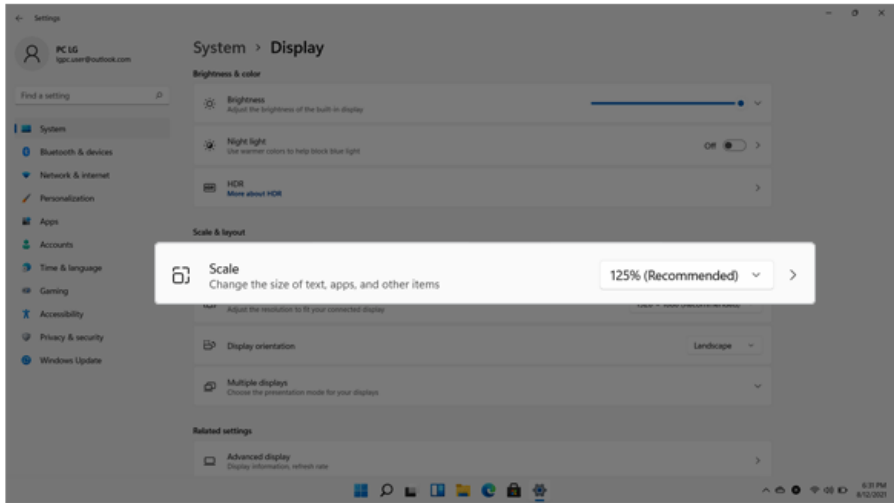
TIP

Press the [] key or [Ctrl] + [Esc] on the keyboard to display the Start screen.



- 2 Select [System] > [Display].

- 3 Changing the **[Scale]** item value changes the auto scaling settings.




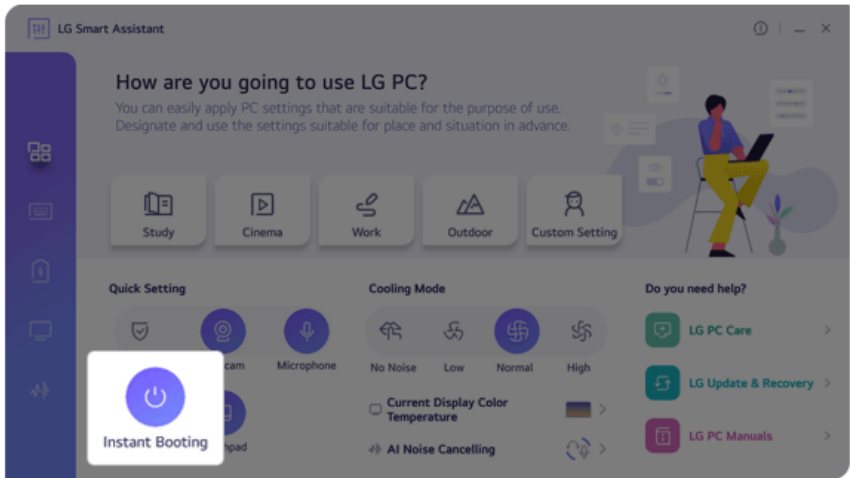
TIP

After changing the Auto Scaling settings, some apps must be shut down and restarted for the scaling and layout to take effect.

Using Instant Booting

Instant Booting allows the system to boot automatically when the notebook PC cover is opened, so that you can use the system without pressing the power button.

- 1 Select the Start button [] > [All apps] and run [LG Smart Assistant].
- 2 Turn on [Instant Booting].



- 3 Shutdown the system and close the notebook PC cover.
- 4 When the cover is opened, the notebook PC turns on and the system starts to boot automatically.

FAQ

Using USB-C™ (Thunderbolt™) Charging Function

You can connect the USB-C™ device to charge a notebook PC battery or an external device, and the operation mode is automatically selected depending the charge settings of the connected device.

- To charge a notebook PC battery, the external device (USB PD Charger, notebook PC, etc.) should support USB Power Delivery 10 W (5 V / 2 A) or higher profile.
 - The external devices that use the USB-C™ port support 10 W (5 V / 2 A) and 15 W (5 V / 3 A).
 - A USB device compatible with USB PD (Power Delivery) supports charging at 15 W (5 V / 3 A), whereas a regular USB device supports charging at 10 W (5 V / 2 A).
 - USB PD batteries cannot be charged using the USB-C™ port of the notebook PC.
 - Always-On Charging is supported only with USB-C™ ports, but not with the regular USB ports.
 - If you connect an adapter with a lower output than the rated adapter, it may take more time to charge the notebook PC.
- 1 When the connected device is set to Automatic (charging the notebook PC or a connected device). Charging the notebook PC by using the mobile phone is not supported.)



- 2 When the connected device is set to Source (the notebook PC is charged.)



- 3 When the connected device is set to Sink (the connected device is charged.)

**Tip** TIP

The charging status of the external device being charged is not displayed on the notebook PC. If you connected a smartphone, you should select "Charge mobile phone" on the smartphone screen to charge the phone battery.

**CAUTION**

If the power consumption of the notebook PC is larger than the power supply from the external device, the battery may be consumed gradually.

LG Smart Assistant

LG Smart Assistant allows you to easily change the settings of your PC according to your needs.


Tip TIP

Menus and supported functions may differ depending on the model.

Please update the program to the latest version through **LG Update & Recovery** (or **LG Update**).

The figures herein are subject to change without prior notice.

Running LG Smart Assistant

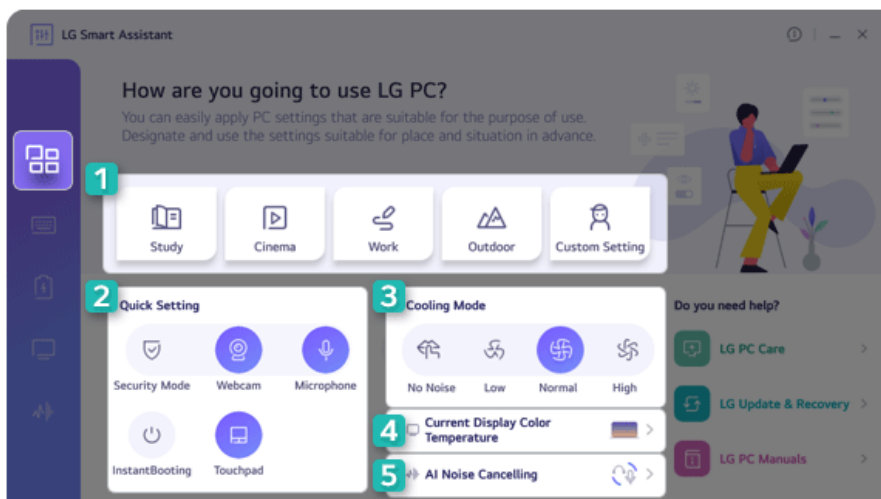
Select the Start button [] > [All apps] and run [LG Smart Assistant].



- 1 **Information Button:** Runs Help or displays information about the software.
- 2 **Minimize/Exit Button:** Minimizes the size of the window, or exits the software.
- 3 **Dashboard:** Allows you to specify PC settings suitable for the purpose of use and apply them at once, or to set key PC functions easily.
- 4 **Keyboard Setting:** Allows you to set keyboard lighting settings, Fn key lock settings, NumLock key status indicator and your own hot keys.
- 5 **Power Setting:** Allows you to check the battery status and extend the battery life, set the power and sleep settings, and set the USB-C™ port charging function.

- 6 **Display Setting:** Allows you to set the color temperature of the display or use the reader mode.
- 7 **AI Noise Canceling:** Allows you to set the noise canceling function for the microphone input and the speaker output.
- 8 **Go to LG Software:** Allows you to run LG PC Care, LG Update & Recovery (or LG Update), and LG PC Manuals directly.

Dashboard



- 1 **User Mode:** Allows you to set the user mode according to the PC environment.
- 2 **Quick Setting:** Allows you to set the PC settings easily.
 - **Security Mode:** Allows you to turn off the webcam and the microphone.
 - **Webcam:** Allows you to turn off or on the webcam.
 - **Microphone:** Allows you to turn off or on the microphone.
 - **Instant Booting:** Allows you to set the system to turn on automatically when you open the cover of the notebook PC.
 - **Touchpad:** Allows you to turn off or on the touchpad.

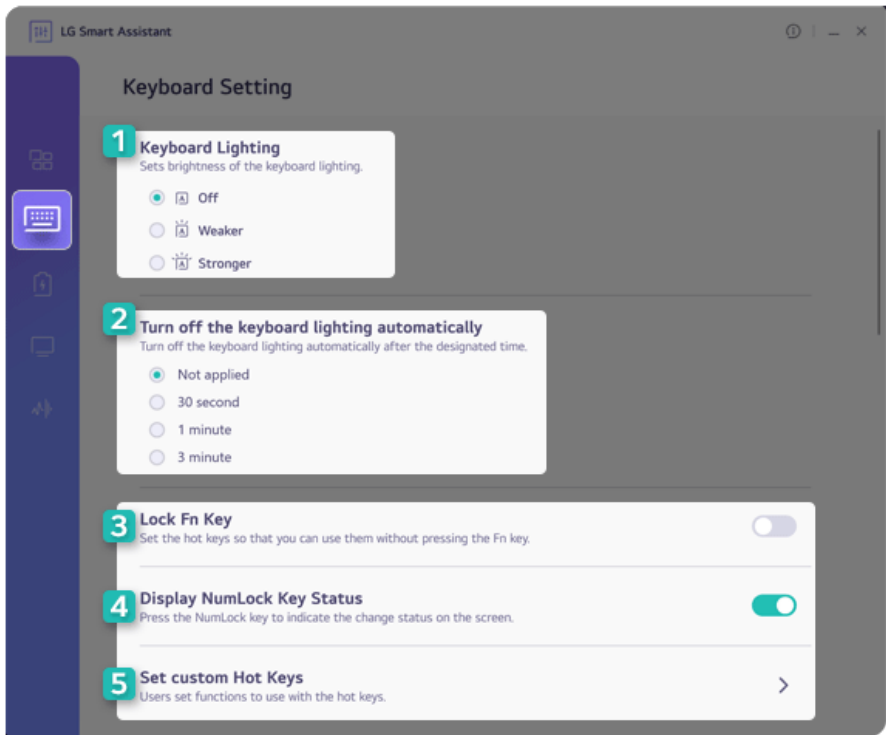
- 3 **Cooling Mode:** Allows you to set the fan mode of the PC according to the PC environment.
- **No Noise Mode:** Limits the PC performance so that the PC does not generate fan noise. (The PC surface temperature may rise when the function is used for a long time. It automatically changes to the **Normal Mode** upon reboot.)
 - **Low Mode:** Minimizes fan speed so that you can use the PC in a quiet environment. (This may degrade your PC performance. It automatically changes to the **Normal Mode** upon reboot.)
 - **Normal Mode:** Optimizes PC performance, heat and noise.
 - **High Mode:** Changes the mode to the one for the tasks that require high performance. (This may result in increased PC surface temperature and noise, and shorter battery life. It automatically changes to the **Normal Mode** upon reboot.)

**CAUTION**

When using for a long term, use **Normal Mode**.



- 4 **Current Display Color Temperature:** Go to the [Display Setting] menu.
- 5 **AI Noise Canceling:** Go to the [AI Noise Canceling] menu.

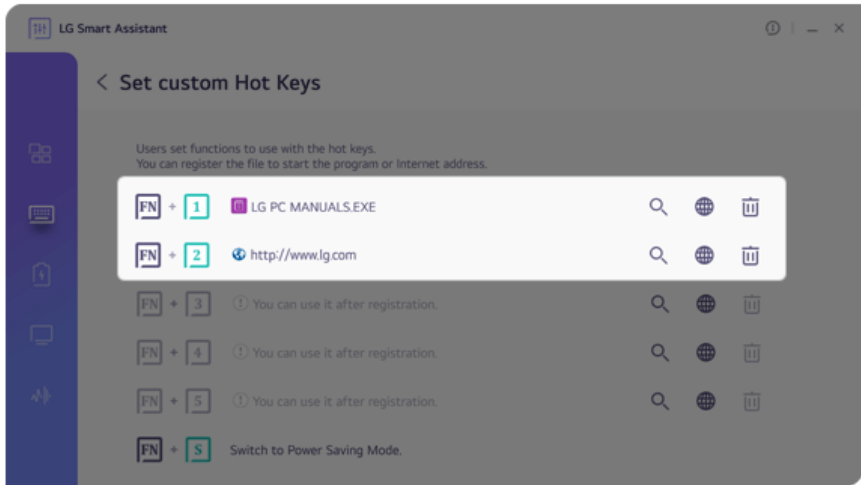
Keyboard Setting



- 1 Keyboard Lighting:** Allows you to set the keyboard lighting and brightness.
- 2 Turn off the keyboard lighting automatically:** Allows you to set the keyboard light to turn off automatically after a specified amount of time.
- 3 Lock Fn Key:** Allows you to set the hot keys (F1 - F12) to operate even without pressing Fn.
- 4 Display NumLock Key Status:** Allows you to set the screen to display the status change when you press the NumLock key.

5 Set custom Hot Keys: Allows you to register an app or internet address to a custom hot key.

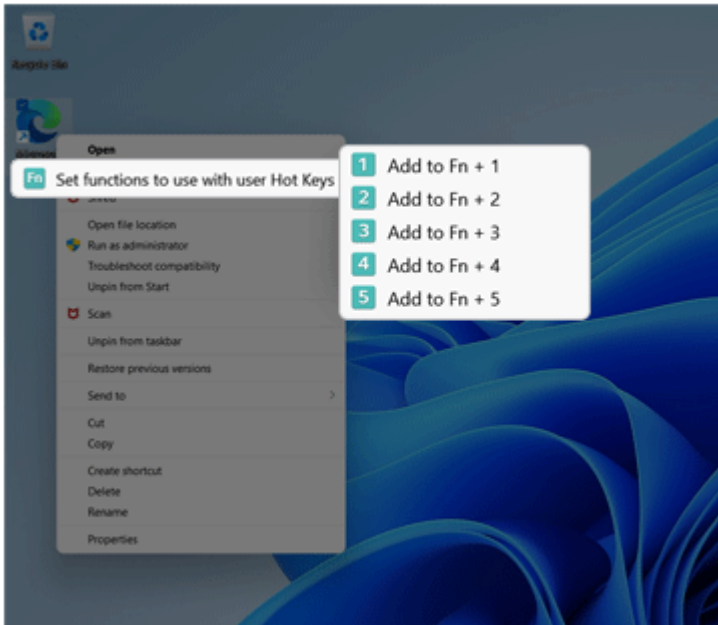
- On the Hot Keys Settings List, select the navigation icon [] or the internet icon [] to register the desired app or Internet address to a hot key.



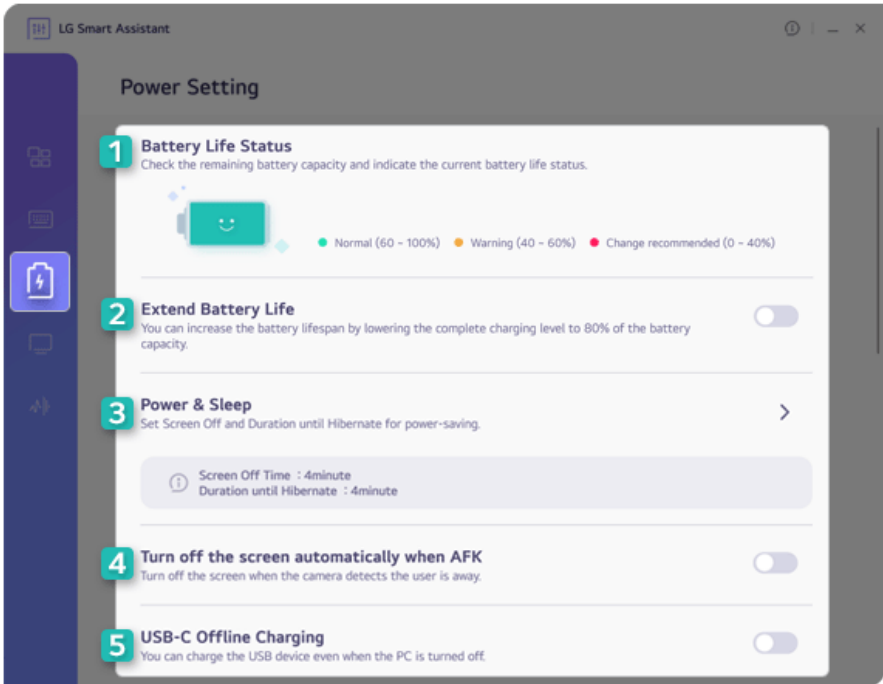
TIP

- Some abnormal program files (exes) and Internet addresses (links) may not be linked.
- Hot keys can be set from 1 to 5, and the [Fn] + [S] Sleep Mode cannot be changed.

- After selecting the app-running file, right-click the mouse and use the [Show more options] > [Set functions to use with user Hot keys] menu to register the app quickly.

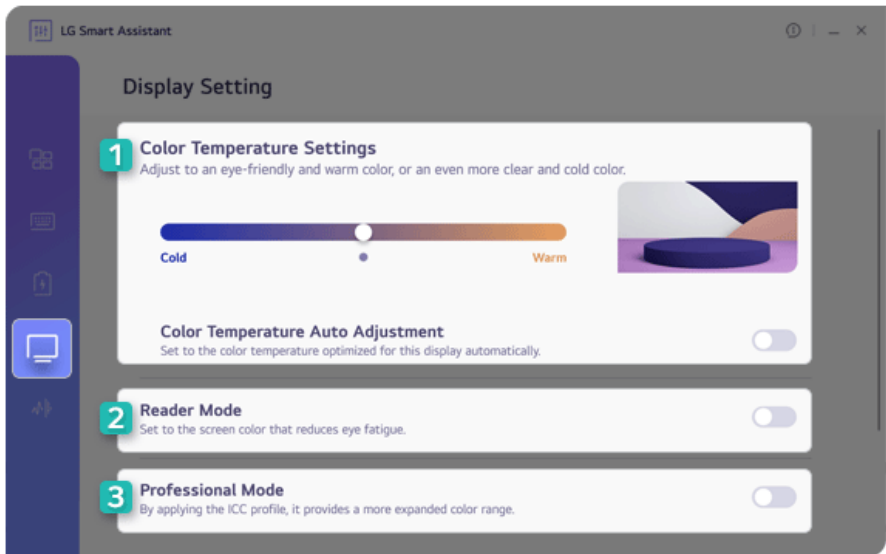


Power Setting



- 1 **Battery Life Status:** Displays the battery status so that you can replace the battery timely.
- 2 **Extend Battery Life:** Allows you to lower the max. battery charge level to 80% to extend the battery lifespan.
- 3 **Power & Sleep:** Displays the screen off time and the sleep mode entry time. You can go to Windows settings and set the time.
- 4 **Turn off the screen automatically when AFK:** Allows you to set the screen to automatically turn off when you are away from the keyboard for a certain amount of time.
- 5 **USB-C™ Offline Charging:** Allows you to set the PC to charge external devices via the USB-C™ port even when the PC is turned off.


Display Setting



- 1 **Color Temperature Settings:** Allows you to adjust the screen color temperature to cool (bluish screen color) or warm (reddish screen color) or use the automatic color temperature function.
- 2 **Reader Mode:** Allows you to set the Reader Mode to reduce eye fatigue when reading documents.

**CAUTION**

Using the **Reader Mode** and the **Night light** at the same time can cause color distortion. When you use the **Reader Mode**, turn off the **Night light**.

- You can turn [Night light] on or off in the Start button [] > [Settings] > [System] > [Display].

TIP

You can use hot keys to use the **Reader Mode** function more conveniently.

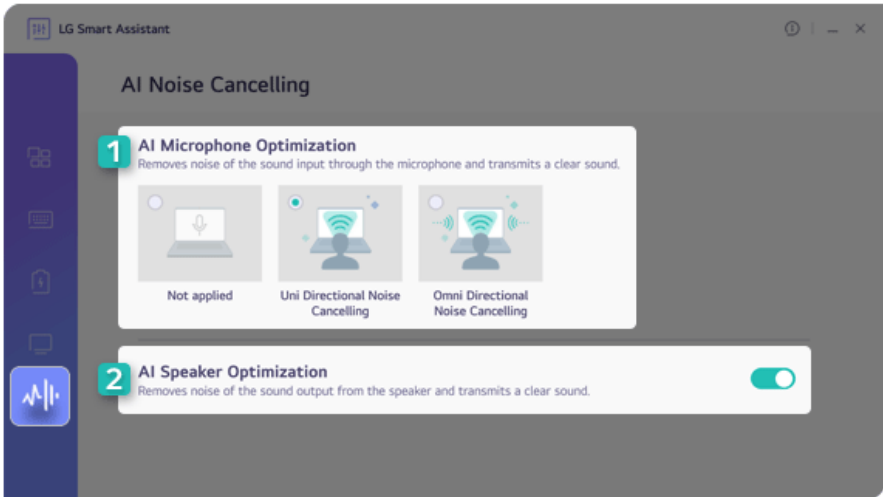
- Press the [Fn] + [F9] keys to switch the PC screen to **Reader Mode**. Press them again to turn off **Reader Mode**.

- 3 **Professional Mode:** Provides a more extended color gamut to the display and enhances the content color reproduction.

TIP

Professional Mode uses an ICC profile and works only in some programs.

AI Noise Cancelling



- 1 **AI Microphone Optimization:** Cancels out the noise input to the microphone to deliver clear sound.
- 2 **AI Speaker Optimization:** Cancels the noise output from the speakers to deliver clear sound.

Backing up/Recovering My Windows

You can back up and recover the disk partition where Windows is installed.

This content only applies to the models provided with LG Update & Recovery.



CAUTION


Partitions other than the disk partition where Windows is installed are not backed up.
For backup or recovery, the AC adapter must be connected to the PC.

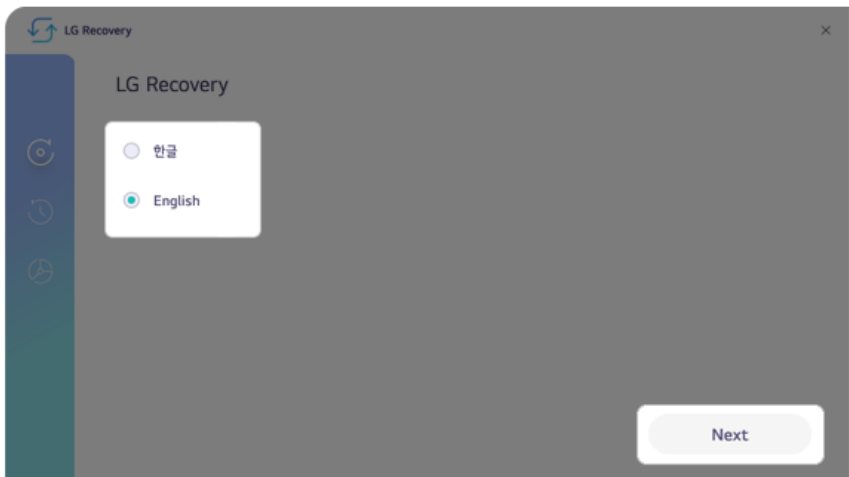


TIP

You can perform backup only on an external disk (USB memory, HDD, etc.).

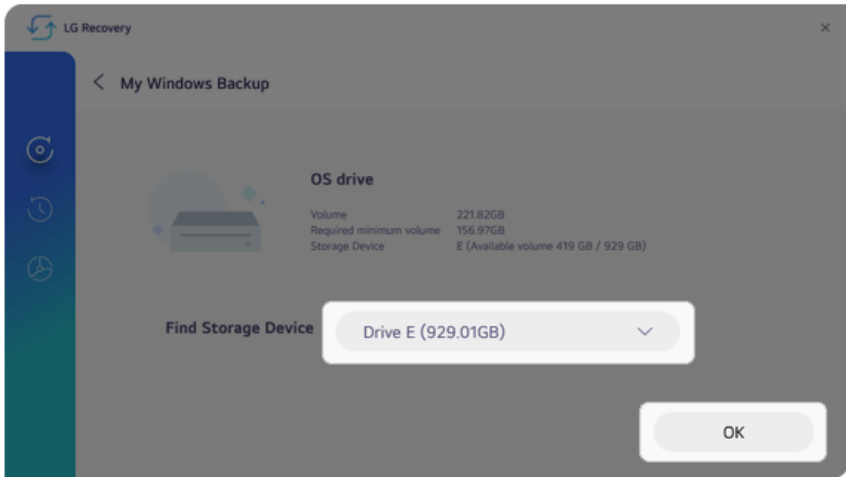
My Windows Backup

- 1 Connect the external disk where the backup file will be saved to the PC.
- 2 Select the Start button [] > [All apps] and run **[LG Update & Recovery]**.
- 3 Select [Backup] > [My Windows Backup] > [OK] to reboot the PC.
- 4 When the **[LG Recovery]** screen appears, check the language you want to use and select [Next].



- 5 Select [Backup] > [My Windows Backup].

- 6 Select the external disk and click [OK].




- 7 When the backup is complete, click [OK].
- 8 Select the Exit button [X] to reboot the PC.

My Windows Recovery



CAUTION

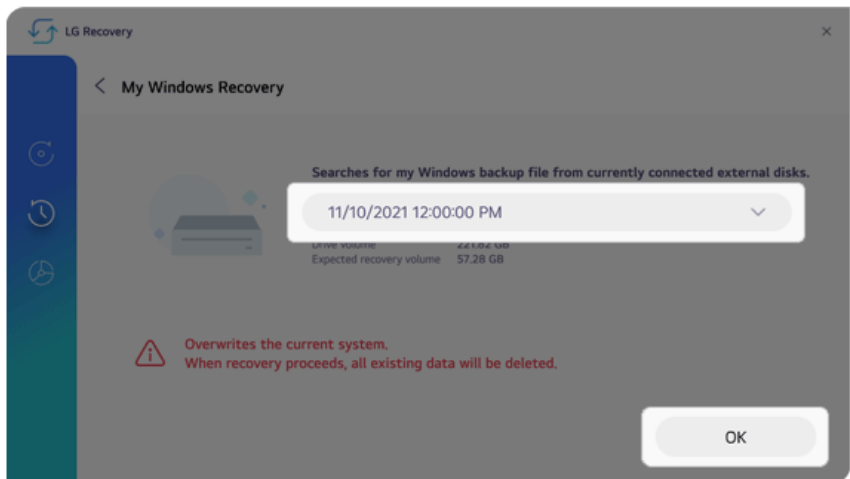
All user data on the partition where Windows is installed will be deleted, so you must backup all important data in advance.

- 1 Connect the external disk where the backup file is saved to the PC.
- 2 Select the Start button [] > [All apps] and run [LG Update & Recovery].
- 3 Select [Recovery] > [My Windows Recovery] > [OK] to reboot the PC.

- When the [LG Recovery] screen appears, check the language you want to use and select [Next].



- Select [Recovery] > [My Windows Recovery].
- Select the backup file on the external disk and click [OK].



- When the recovery is complete, click [OK].

- 8 Select the Exit button [X] to reboot the PC.

Setting the Boot Password

This process is to set a password so that other people cannot use the computer or change the settings.

The user can set a password while booting the system or setting up the system.

The model in the example can differ from actual models and is subject to change for performance improvements, without prior notice.



CAUTION

Without the registered password, access to the system will be denied. Write down and keep the password in a safe place.

Set Supervisor Password

The password prevents unauthorized people from accessing the PC. By default, no password is set for the machine. If an unauthorized person changes the password in the System Setup, you will be unable to access the system.



TIP

With **[Set Supervisor Password]**, you are authorized to set all items in the System Setup and to set **[Password on boot]**. In case other people also use the computer, it is recommended to set the **[Set User Password]**.

- 1 Reboot the system and press [F2] multiple times.



- 2 When the System Setup screen appears, go to **[Security]** > **[Set Supervisor Password]** using the arrow keys and press the [Enter] key.



- 3 When the Password Setting screen appears, enter a password and press the [Enter] key. The password should not exceed 12 characters and should consist of English letters (A - Z), numbers (0 - 9), and special characters or a combination of them.



- 4 When a pop-up window appears, press the [Enter] key.



- 5 To save the changes in system setup, press [F10]. When a pop-up window appears, select [Yes] and press the [Enter] key.



- 6 The PC will restart.

Set User Password

The password set in [Set User Password] is of a lower level than the one set in [Set Supervisor Password], so you can set a user password only after setting a password in [Set Supervisor Password].

Tip TIP

[Set User Password] allows limited access to the items in the System Setup screen compared to the [Set Supervisor Password] items.

- 1 Execute the System Setup screen, go to **[Security]** > **[Set User Password]** using the arrow keys and press the **[Enter]** key.



- 2 When the Password Setting screen appears, enter a password and press the **[Enter]** key. The password should not exceed 12 characters and should consist of English letters (A - Z), numbers (0 - 9), and special characters or a combination of them.



- 3 When a pop-up window appears, press the **[Enter]** key.



- To save the changes in system setup, press [F10]. When a pop-up window appears, select **[Yes]** and press the [Enter] key.



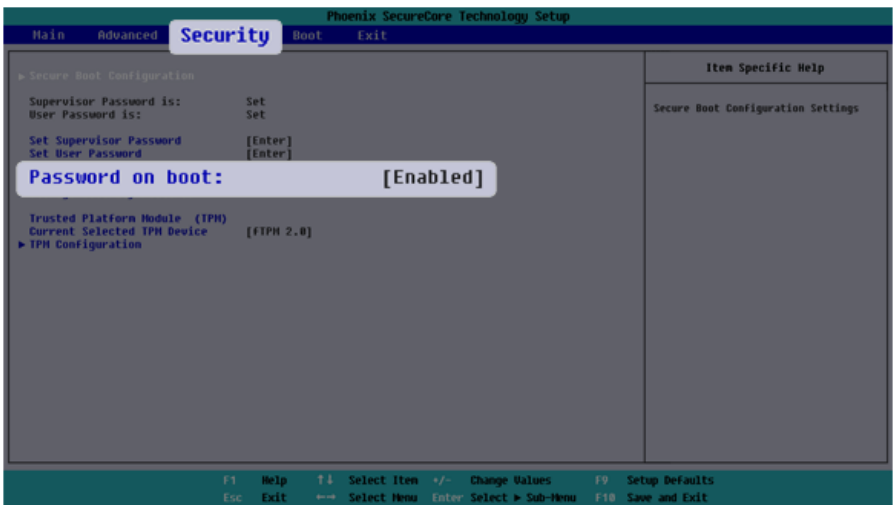
- The PC will restart.

Password on boot

[Password on boot] protects your system by requiring during booting to enter the password set in **[Set Supervisor Password]** or **[Set User Password]**.

To set **[Password on boot]**, you first need to set **[Set Supervisor Password]** or set both **[Set Supervisor Password]** and **[Set User Password]**.

- Execute the System Setup screen, go to **[Security]** > **[Password on boot]** using the arrow keys and press the [Enter] key.



- Select **[Enabled]** and press the [Enter] key to complete the **[Password on boot]** setting.

Storage Security Features

The password for **[Storage Security Features]** is to set the password directly on the storage device separately from **[Set Supervisor Password]**.

Tip TIP

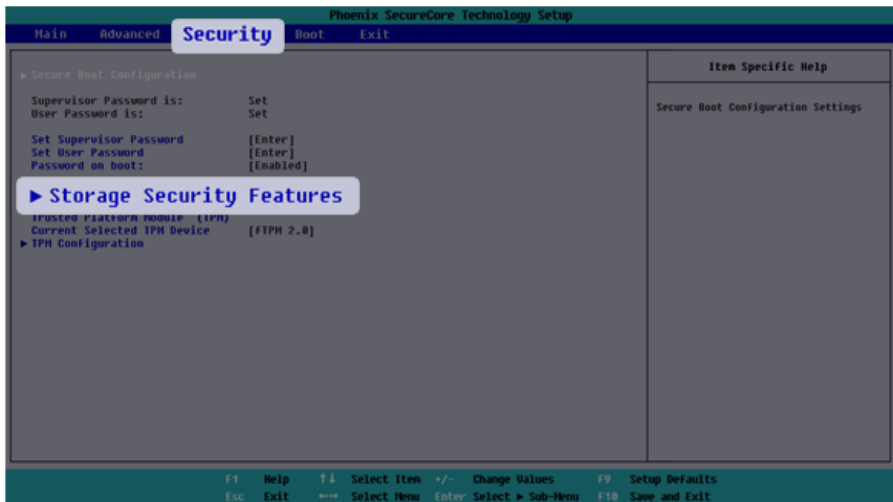
- Some models with built-in NVMe™ may not support the password setting function.
- For the models equipped with two NVMe devices, you can set a password for each device. If passwords are set for both devices, the password input window appears twice during the booting process. The order in which the password input windows appears is according to the **[Boot Priority Order]** of the **[Boot]** menu.

CAUTION

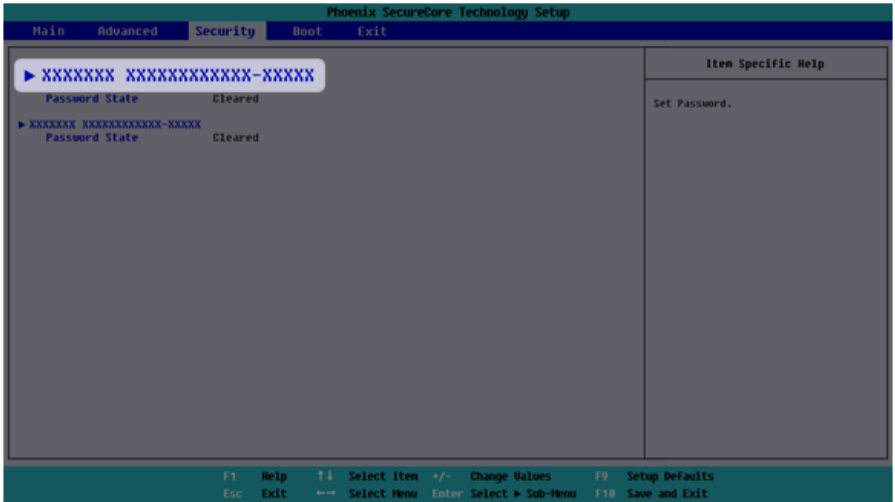
If you lose the password for **[Storage Security Features]**, you cannot recover the storage device.

- Please note that the replacement of the storage device due to the loss of the password for **[Storage Security Features]** is excluded from the product warranty.

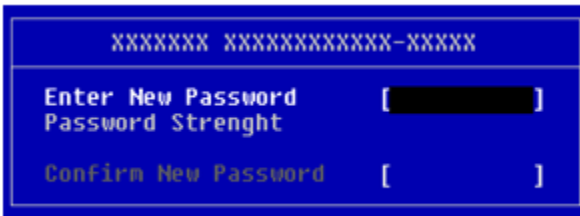
- 1 Execute the System Setup screen, go to **[Security]** > **[Storage Security Features]** using the arrow keys and press the **[Enter]** key.



- Go to the desired device and press the [Enter] key.



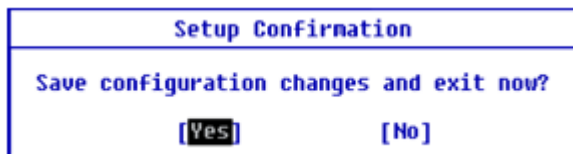
- Press the [Enter] key in **[Set Password]**.
- When the Password Setting screen appears, enter a password and press the [Enter] key. The password should not exceed 12 characters and should consist of English letters (A - Z), numbers (0 - 9), and special characters or a combination of them.



- When a pop-up window appears, press the [Enter] key.



- 6 To save the changes in system setup, press [F10]. When a pop-up window appears, select **[Yes]** and press the [Enter] key.




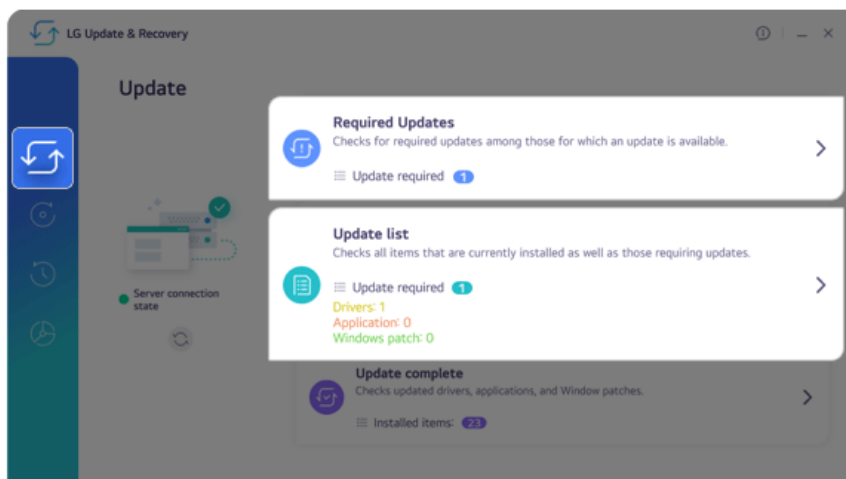
- 7 The PC will restart.

Installing the Driver

The figures herein may differ by language selection and are subject to change without prior notice.

Using **LG Update & Recovery** (or **LG Update**) to Install the Drivers

- 1 Select the Start button [] > [All apps] and run [**LG Update & Recovery**] or [**LG Update**].
- 2 Select [**Required Updates**] or [**Update List**] to install the driver.



Tip TIP

You can use **LG Update & Recovery** (or **LG Update**) to install the deleted drivers or the latest drivers easily and quickly.

Use **LG Update & Recovery** (or **LG Update**) to keep your system current and optimized.

Downloading **LG Update & Recovery** (or **LG Update**)

You can download and install **LG Update & Recovery** (or **LG Update**) from LG Electronics website (www.lg.com).


Setting Auto Scaling

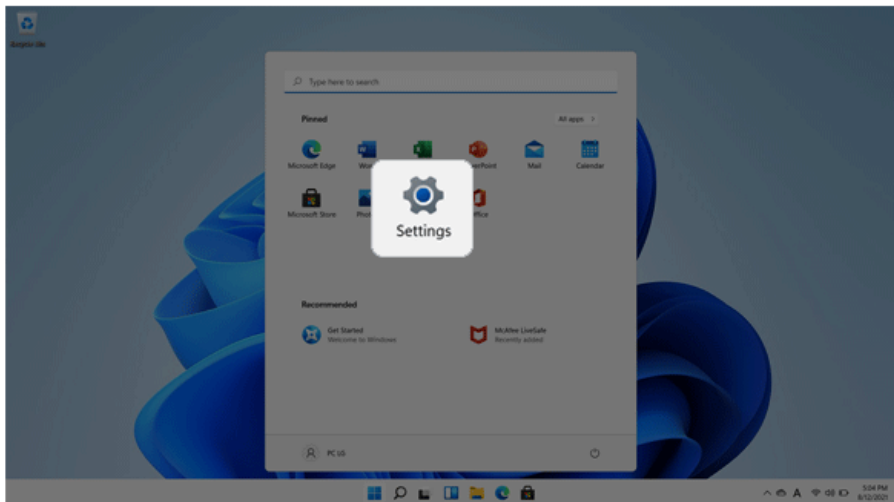
The Windows **Auto Scaling** feature for user's convenience may partially blur the screen or display some icons and texts larger.

Refer to the following information to change the DPI scaling to suit your needs.

- 1 Select the Start button [] > [Settings].

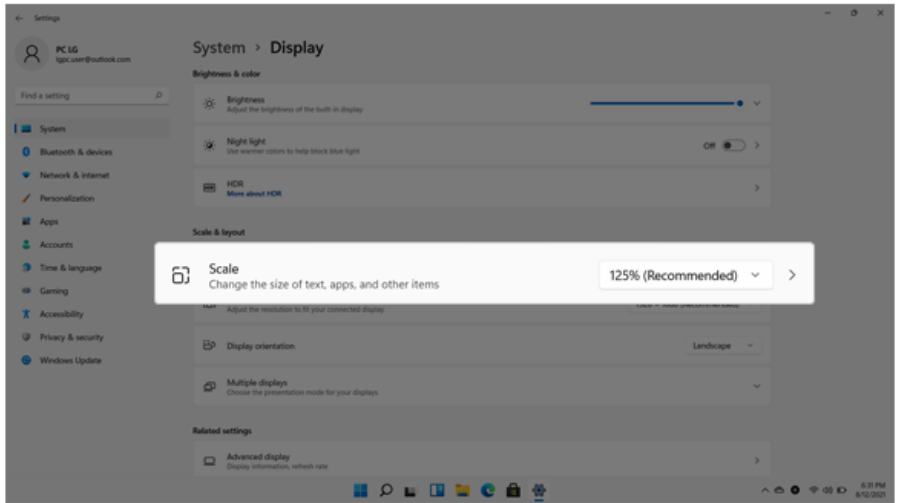
Tip TIP

Press the [] key or [Ctrl] + [Esc] on the keyboard to display the Start screen.



- 2 Select [System] > [Display].

3 Changing the [Scale] item value changes the auto scaling settings.



Tip TIP

After changing the Auto Scaling settings, some apps must be shut down and restarted for the scaling and layout to take effect.