

● **SAR Test Result**

**Test SKU: SKU #1 (with INPAQ Antenna)**

**Antenna Chain 0 (AUX), Test Position: Screen**

Measurement Report for Device, SCREEN, U-NII-8, UID 10755 AAC, Channel 207 (6985.0MHz)

**Device under Test Properties**

Model, Manufacturer	Dimensions [mm]	IMEI	DUT Type
Device,	315.0 x 215.0 x 6.0		Laptop

**Exposure Conditions**

Phantom Section, TSL	Position, Test Distance [mm]	Band	Group, UID	Frequency [MHz], Channel Number	Conversion Factor	TSL Conductivity [S/m]	TSL Permittivity
Flat, HSL	SCREEN, 5.00	U-NII-8	WLAN, 10755-AAC	6985.0, 207	5.55	6.69	33.2

**Hardware Setup**

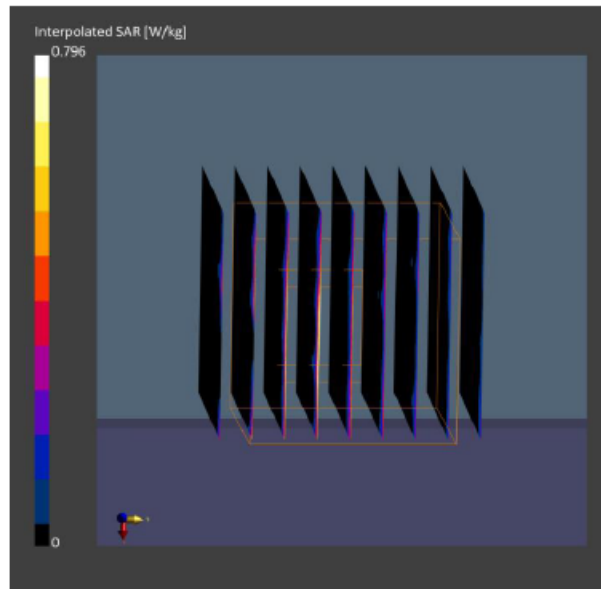
Phantom	TSL, Measured Date	Probe, Calibration Date	DAE, Calibration Date
ELI V5.0 (20deg probe tilt)- 1170	HBBL-600-10000	EX3DV4 - SN3855, 2021-09-24	DAE4 Sn1337, 2021-09-20

**Scan Setup**

	Area Scan	Zoom Scan
Grid Extents [mm]	102.0 x 204.0	22.0 x 22.0 x 22.0
Grid Steps [mm]	8.5 x 8.5	3.4 x 3.4 x 1.4
Sensor Surface [mm]	3.0	1.4
Graded Grid	Yes	Yes
Grading Ratio	1.5	1.4
MAIA	Y	Y
Surface Detection	VMS + 6p	VMS + 6p
Scan Method	Measured	Measured

**Measurement Results**

	Area Scan	Zoom Scan
Date	2022-02-18	2022-02-18
psSAR1g [W/kg]	0.175	0.124
psSAR10g [W/kg]	0.049	0.033
Power Drift [dB]	-0.57	-0.36
Power Scaling	Disabled	Disabled
Scaling Factor [dB]		
TSL Correction	No correction	No correction
M2/M1 [%]		54.8
Dist 3dB Peak [mm]		4.1



### Antenna Chain 0 (AUX), Test Position: Bottom

Measurement Report for Device, BOTTOM, U-NII-8, UID 10755 AAC, Channel 207 (6985.0MHz)

#### Device under Test Properties

Model, Manufacturer	Dimensions [mm]	IMEI	DUT Type
Device,	315.0 x 215.0 x 6.0		Laptop

#### Exposure Conditions

Phantom Section, TSL	Position, Test Distance [mm]	Band	Group, UID	Frequency [MHz], Channel Number	Conversion Factor	TSL Conductivity [S/m]	TSL Permittivity
Flat, HSL	BOTTOM, 0.00	U-NII-8	WLAN, 10755-AAC	6985.0, 207	5.55	6.69	33.2

#### Hardware Setup

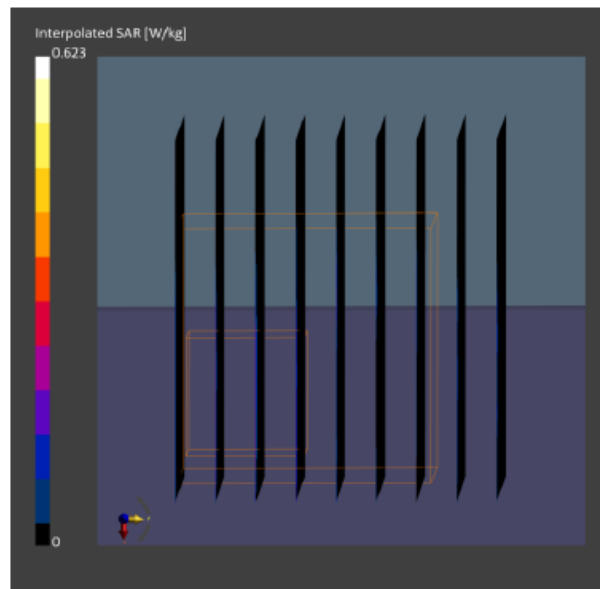
Phantom	TSL, Measured Date	Probe, Calibration Date	DAE, Calibration Date
ELI V5.0 (20deg probe tilt) - 1170	HBBL-600-10000	EX3DV4 - SN3855, 2021-09-24	DAE4 Sn1337, 2021-09-20

#### Scan Setup

	Area Scan	Zoom Scan
Grid Extents [mm]	102.0 x 204.0	22.0 x 22.0 x 22.0
Grid Steps [mm]	8.5 x 8.5	3.4 x 3.4 x 1.4
Sensor Surface [mm]	3.0	1.4
Graded Grid	Yes	Yes
Grading Ratio	1.5	1.4
MAIA	Y	Y
Surface Detection	VMS + 6p	VMS + 6p
Scan Method	Measured	Measured

#### Measurement Results

	Area Scan	Zoom Scan
Date	2022-02-18	2022-02-18
psSAR1g [W/kg]	0.219	0.117
psSAR10g [W/kg]	0.085	0.033
Power Drift [dB]	1.08	-3.25
Power Scaling	Disabled	Disabled
Scaling Factor [dB]		
TSL Correction	No correction	No correction
M2/M1 [%]		56.4
Dist 3dB Peak [mm]		6.1



**Test SKU: SKU #2 (with LUXSHARE-ICT Antenna)**

**Antenna Chain 0 (AUX), Test Position: Screen**

Measurement Report for Device, SCREEN, U-NII-6, UID 10755 AAC, Channel 111 (6505.0MHz)

**Device under Test Properties**

Model, Manufacturer	Dimensions [mm]	IMEI	DUT Type
Device,	315.0 x 215.0 x 6.0		Laptop

**Exposure Conditions**

Phantom Section, TSL	Position, Test Distance [mm]	Band	Group, UID	Frequency [MHz], Channel Number	Conversion Factor	TSL Conductivity [S/m]	TSL Permittivity
Flat, HSL	SCREEN, 5.00	U-NII-6	WLAN, 10755-AAC	6505.0, 111	5.55	6.08	34.0

**Hardware Setup**

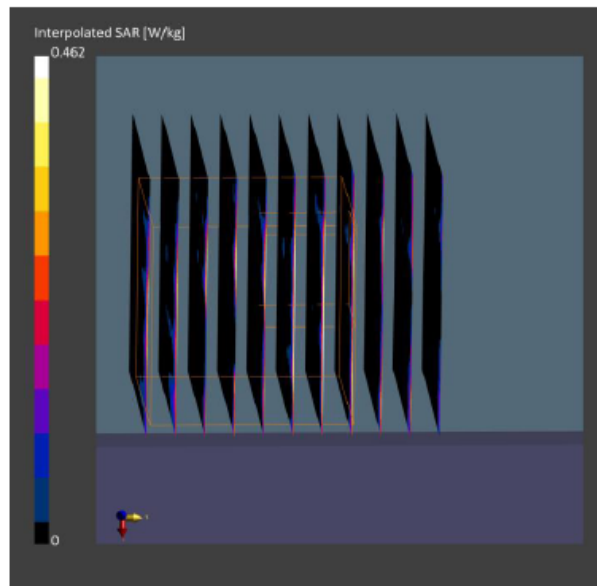
Phantom	TSL, Measured Date	Probe, Calibration Date	DAE, Calibration Date
ELI V5.0 (20deg probe tilt)- 1170	HBBL-600-10000	EX3DV4 - SN3855, 2021-09-24	DAE4 Sn1337, 2021-09-20

**Scan Setup**

	Area Scan	Zoom Scan
Grid Extents [mm]	102.0 x 204.0	22.0 x 22.0 x 22.0
Grid Steps [mm]	8.5 x 8.5	3.1 x 3.1 x 1.2
Sensor Surface [mm]	3.0	1.4
Graded Grid	Yes	Yes
Grading Ratio	1.5	1.2
MAIA	Y	Y
Surface Detection	VMS + 6p	VMS + 6p
Scan Method	Measured	Measured

**Measurement Results**

	Area Scan	Zoom Scan
Date	2022-02-18	2022-02-18
psSAR1g [W/kg]	0.121	0.081
psSAR10g [W/kg]	0.036	0.024
Power Drift [dB]	-1.62	-0.80
Power Scaling	Disabled	Disabled
Scaling Factor [dB]		
TSL Correction	No correction	No correction
M2/M1 [%]		59.9
Dist 3dB Peak [mm]		5.0



### Antenna Chain 0 (AUX), Test Position: Bottom

Measurement Report for Device, BOTTOM, U-NII-6, UID 10755 AAC, Channel 111 (6505.0MHz)

#### Device under Test Properties

Model, Manufacturer	Dimensions [mm]	IMEI	DUT Type
Device,	315.0 x 215.0 x 6.0		Laptop

#### Exposure Conditions

Phantom Section, TSL	Position, Test Distance [mm]	Band	Group, UID	Frequency [MHz], Channel Number	Conversion Factor	TSL Conductivity [S/m]	TSL Permittivity
Flat, HSL	BOTTOM, 0.00	U-NII-6	WLAN, 10755-AAC	6505.0, 111	5.55	6.08	34.0

#### Hardware Setup

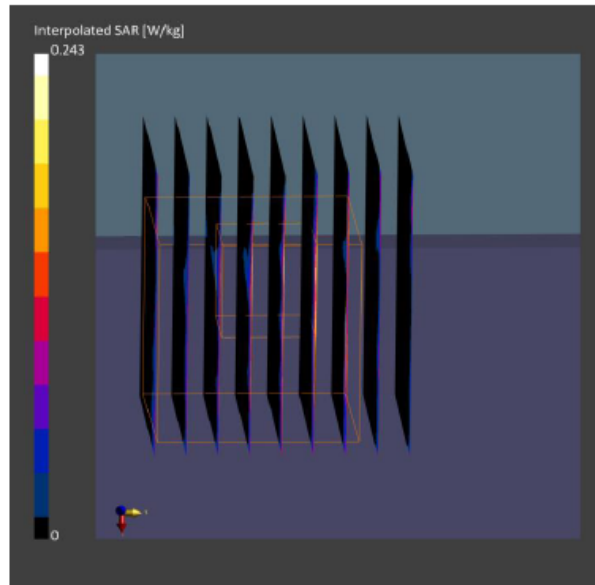
Phantom	TSL, Measured Date	Probe, Calibration Date	DAE, Calibration Date
ELI V5.0 (20deg probe tilt) - 1170	HBBL-600-10000	EX3DV4 - SN3855, 2021-09-24	DAE4 Sn1337, 2021-09-20

#### Scan Setup

	Area Scan	Zoom Scan
Grid Extents [mm]	102.0 x 204.0	22.0 x 22.0 x 22.0
Grid Steps [mm]	8.5 x 8.5	3.4 x 3.4 x 1.4
Sensor Surface [mm]	3.0	1.4
Graded Grid	Yes	Yes
Grading Ratio	1.5	1.4
MAIA	Y	Y
Surface Detection	VMS + 6p	VMS + 6p
Scan Method	Measured	Measured

#### Measurement Results

	Area Scan	Zoom Scan
Date	2022-02-18	2022-02-18
psSAR1g [W/kg]	0.041	0.050
psSAR10g [W/kg]	0.014	0.013
Power Drift [dB]	0.16	0.41
Power Scaling	Disabled	Disabled
Scaling Factor [dB]		
TSL Correction	No correction	No correction
M2/M1 [%]		51.9
Dist 3dB Peak [mm]		5.8



● **Power Density Test Result**  
**Test SKU: SKU #1 (with INPAQ Antenna)**  
**Antenna Chain 0 (AUX)**

Measurement Report for 14Z90Q(INPAQ), SCREEN, U-NII-5, UID 10755 AAC, Channel 15 (6025.0MHz)

**Device under Test Properties**

Model, Manufacturer	Dimensions [mm]	IMEI	DUT Type
, 14Z90Q(INPAQ)	315.0 x 215.0 x 5.0		Laptop

**Exposure Conditions**

Phantom Section	Position, Test Distance [mm]	Band	Group, UID	Frequency [MHz], Channel Number	Conversion Factor
5G Air	SCREEN, 2.00	U-NII-5	WLAN, 10755-AAC	6025.0, 15	1.0

**Hardware Setup**

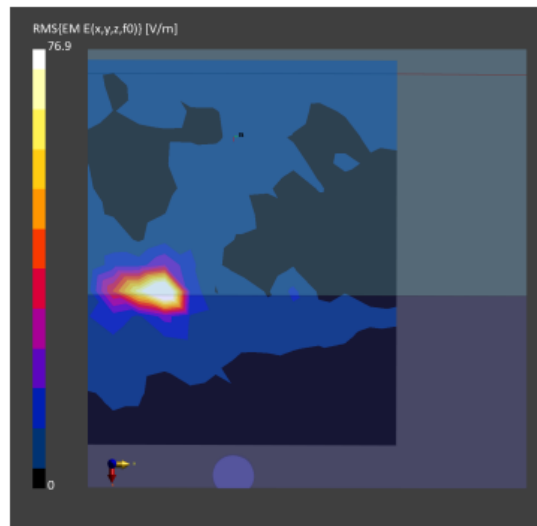
Phantom	Medium	Probe, Calibration Date	DAE, Calibration Date
mmWave- 1059	Air---	EUmmWV4 - SN9544_F1-55GHz, 2021-04-01	DAE3 Sn393, 2021-04-09

**Scan Setup**

	5G Scan
Grid Extents [mm]	120.0 x 120.0
Grid Steps [lambda]	0.25 x 0.25
Sensor Surface [mm]	2.0
MAIA	N/A

**Measurement Results**

	5G Scan
Date	2022-02-24
Avg. Area [cm <sup>2</sup> ]	4.00
psPDn+ [W/m <sup>2</sup> ]	1.35
psPDtot+ [W/m <sup>2</sup> ]	1.94
psPDmod+ [W/m <sup>2</sup> ]	2.42
E <sub>max</sub> [V/m]	76.9
Power Drift [dB]	-0.79



Measurement Report for 14Z90Q(INPAQ), SCREEN, U-NII-5, UID 10755 AAC, Channel 79 (6345.0MHz)

Device under Test Properties

Model, Manufacturer	Dimensions [mm]	IMEI	DUT Type
, 14Z90Q(INPAQ)	315.0 x 215.0 x 5.0		Laptop

Exposure Conditions

Phantom Section	Position, Test Distance [mm]	Band	Group, UID	Frequency [MHz], Channel Number	Conversion Factor
5G Air	SCREEN, 2.00	U-NII-5	WLAN, 10755-AAC	6345.0, 79	1.0

Hardware Setup

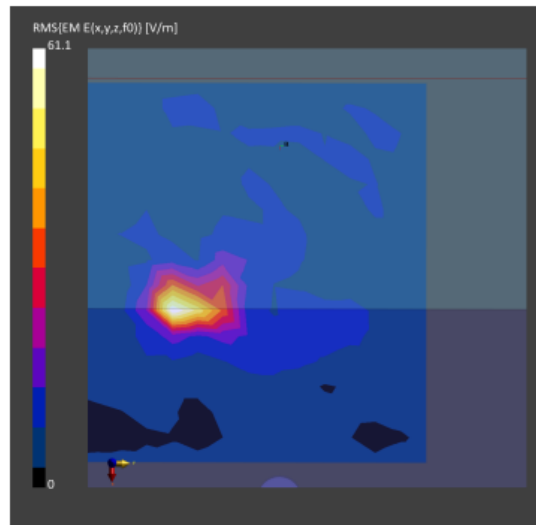
Phantom	Medium	Probe, Calibration Date	DAE, Calibration Date
mmWave- 1059	Air---	EUmmWV4 - SN9544_F1-55GHz, 2021-04-01	DAE3 Sn393, 2021-04-09

Scan Setup

	5G Scan
Grid Extents [mm]	120.0 x 120.0
Grid Steps [lambda]	0.25 x 0.25
Sensor Surface [mm]	2.0
MAIA	N/A

Measurement Results

	5G Scan
Date	2022-02-24
Avg. Area [cm <sup>2</sup> ]	4.00
psPDn+ [W/m <sup>2</sup> ]	1.09
psPDtot+ [W/m <sup>2</sup> ]	2.36
psPDmod+ [W/m <sup>2</sup> ]	2.77
E <sub>max</sub> [V/m]	61.1
Power Drift [dB]	-0.23



Measurement Report for 14Z90Q(INPAQ), SCREEN, U-NII-6, UID 10755 AAC, Channel 111 (6505.0MHz)

Device under Test Properties

Model, Manufacturer	Dimensions [mm]	IMEI	DUT Type
, 14Z90Q(INPAQ)	315.0 x 215.0 x 5.0		Laptop

Exposure Conditions

Phantom Section	Position, Test Distance [mm]	Band	Group, UID	Frequency [MHz], Channel Number	Conversion Factor
5G Air	SCREEN, 2.00	U-NII-6	WLAN, 10755-AAC	6505.0, 111	1.0

Hardware Setup

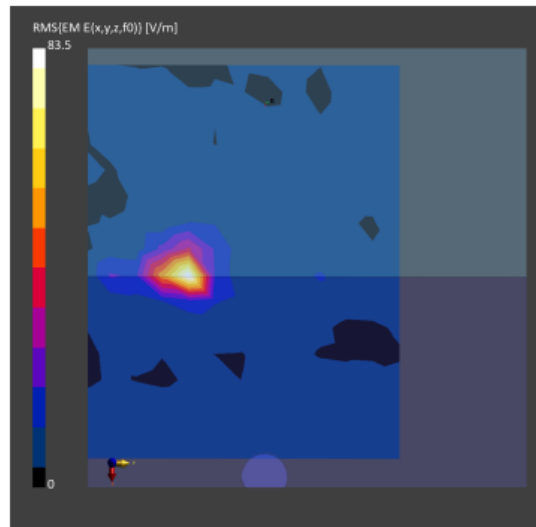
Phantom	Medium	Probe, Calibration Date	DAE, Calibration Date
mmWave- 1059	Air---	EUmWV4 - SN9544_F1-55GHz, 2021-04-01	DAE3 Sn393, 2021-04-09

Scan Setup

	5G Scan
Grid Extents [mm]	25.0 x 25.0
Grid Steps [lambda]	0.25 x 0.25
Sensor Surface [mm]	2.0
MAIA	N/A

Measurement Results

	5G Scan
Date	2022-02-24
Avg. Area [cm <sup>2</sup> ]	4.00
psPDn+ [W/m <sup>2</sup> ]	1.63
psPDtot+ [W/m <sup>2</sup> ]	2.67
psPDmod+ [W/m <sup>2</sup> ]	3.98
E <sub>max</sub> [V/m]	83.5
Power Drift [dB]	-1.89



Measurement Report for 14Z90Q(INPAQ), SCREEN, U-NII-7, UID 10755 AAC, Channel 175 (6825.0MHz)

Device under Test Properties

Model, Manufacturer	Dimensions [mm]	IMEI	DUT Type
, 14Z90Q(INPAQ)	315.0 x 215.0 x 5.0		Laptop

Exposure Conditions

Phantom Section	Position, Test Distance [mm]	Band	Group, UID	Frequency [MHz], Channel Number	Conversion Factor
5G Air	SCREEN, 2.00	U-NII-7	WLAN, 10755-AAC	6825.0, 175	1.0

Hardware Setup

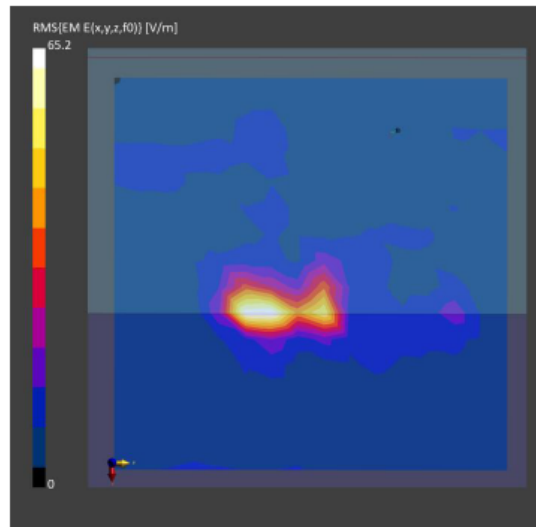
Phantom	Medium	Probe, Calibration Date	DAE, Calibration Date
mmWave- 1059	Air---	EUmmWV4 - SN9544_F1-55GHz, 2021-04-01	DAE3 Sn393, 2021-04-09

Scan Setup

	5G Scan
Grid Extents [mm]	120.0 x 120.0
Grid Steps [lambda]	0.25 x 0.25
Sensor Surface [mm]	2.0
MAIA	N/A

Measurement Results

	5G Scan
Date	2022-02-24
Avg. Area [cm <sup>2</sup> ]	4.00
psPDn+ [W/m <sup>2</sup> ]	1.81
psPDtot+ [W/m <sup>2</sup> ]	3.10
psPDmod+ [W/m <sup>2</sup> ]	3.42
E <sub>max</sub> [V/m]	65.2
Power Drift [dB]	-0.11





Measurement Report for 14Z90Q(INPAQ), SCREEN, U-NII-7, UID 10755 AAC, Channel 175 (6825.0MHz)

Device under Test Properties

Model, Manufacturer	Dimensions [mm]	IMEI	DUT Type
, 14Z90Q(INPAQ)	315.0 x 215.0 x 5.0		Laptop

Exposure Conditions

Phantom Section	Position, Test Distance [mm]	Band	Group, UID	Frequency [MHz], Channel Number	Conversion Factor
5G Air	SCREEN, 2.00	U-NII-7	WLAN, 10755-AAC	6825.0, 175	1.0

Hardware Setup

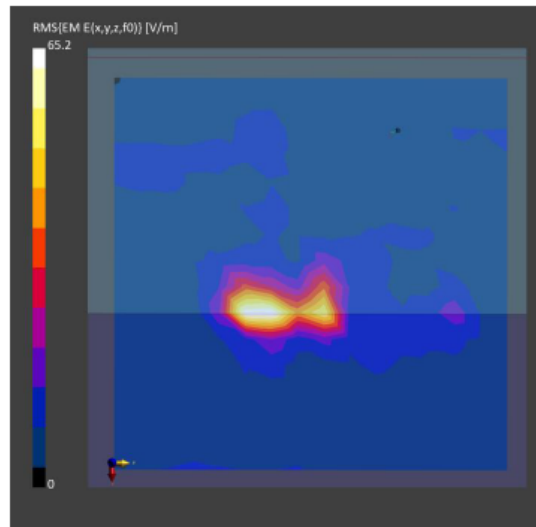
Phantom	Medium	Probe, Calibration Date	DAE, Calibration Date
mmWave- 1059	Air---	EUmmWV4 - SN9544_F1-55GHz, 2021-04-01	DAE3 Sn393, 2021-04-09

Scan Setup

	5G Scan
Grid Extents [mm]	120.0 x 120.0
Grid Steps [lambda]	0.25 x 0.25
Sensor Surface [mm]	2.0
MAIA	N/A

Measurement Results

	5G Scan
Date	2022-02-24
Avg. Area [cm <sup>2</sup> ]	4.00
psPDn+ [W/m <sup>2</sup> ]	1.81
psPDtot+ [W/m <sup>2</sup> ]	3.10
psPDmod+ [W/m <sup>2</sup> ]	3.42
E <sub>max</sub> [V/m]	65.2
Power Drift [dB]	-0.11



**Test SKU: SKU #1 (with INPAQ Antenna)**  
**Antenna Chain 1 (Main)**

Measurement Report for 14Z90Q(INPAQ), SCREEN, U-NII-5, UID 10755 AAC, Channel 15 (6025.0MHz)

**Device under Test Properties**

Model, Manufacturer	Dimensions [mm]	IMEI	DUT Type
, 14Z90Q(INPAQ)	315.0 x 215.0 x 5.0		Laptop

**Exposure Conditions**

Phantom Section	Position, Test Distance [mm]	Band	Group, UID	Frequency [MHz], Channel Number	Conversion Factor
5G Air	SCREEN, 2.00	U-NII-5	WLAN, 10755-AAC	6025.0, 15	1.0

**Hardware Setup**

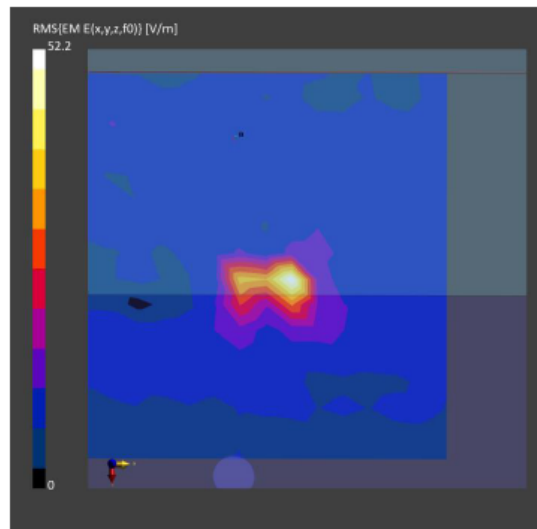
Phantom	Medium	Probe, Calibration Date	DAE, Calibration Date
mmWave- 1059	Air---	EUmmWV4 - SN9544_F1-55GHz, 2021-04-01	DAE3 Sn393, 2021-04-09

**Scan Setup**

	5G Scan
Grid Extents [mm]	120.0 x 120.0
Grid Steps [lambda]	0.25 x 0.25
Sensor Surface [mm]	2.0
MAIA	N/A

**Measurement Results**

	5G Scan
Date	2022-02-24
Avg. Area [cm <sup>2</sup> ]	4.00
psPDn+ [W/m <sup>2</sup> ]	0.771
psPDtot+ [W/m <sup>2</sup> ]	1.33
psPDmod+ [W/m <sup>2</sup> ]	1.69
E <sub>max</sub> [V/m]	52.2
Power Drift [dB]	-1.05



Measurement Report for 14Z90Q(INPAQ), SCREEN, U-NII-5, UID 10755 AAC, Channel 79 (6345.0MHz)

Device under Test Properties

Model, Manufacturer	Dimensions [mm]	IMEI	DUT Type
, 14Z90Q(INPAQ)	315.0 x 215.0 x 5.0		Laptop

Exposure Conditions

Phantom Section	Position, Test Distance [mm]	Band	Group, UID	Frequency [MHz], Channel Number	Conversion Factor
5G Air	SCREEN, 2.00	U-NII-5	WLAN, 10755-AAC	6345.0, 79	1.0

Hardware Setup

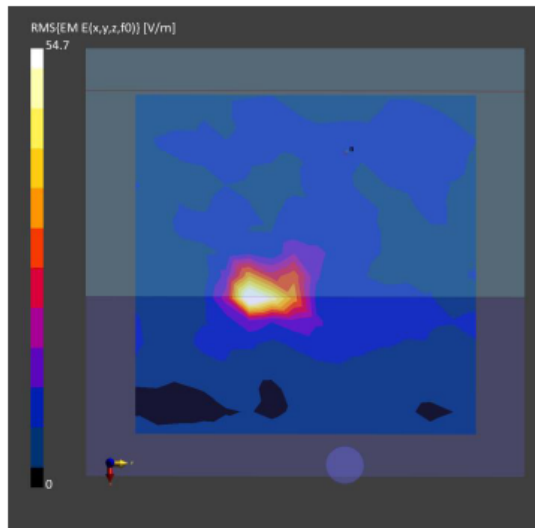
Phantom	Medium	Probe, Calibration Date	DAE, Calibration Date
mmWave- 1059	Air---	EUmmWV4 - SN9544_F1-55GHz, 2021-04-01	DAE3 Sn393, 2021-04-09

Scan Setup

	5G Scan
Grid Extents [mm]	120.0 x 120.0
Grid Steps [lambda]	0.25 x 0.25
Sensor Surface [mm]	2.0
MAIA	N/A

Measurement Results

	5G Scan
Date	2022-02-24
Avg. Area [cm <sup>2</sup> ]	4.00
psPDn+ [W/m <sup>2</sup> ]	0.839
psPDtot+ [W/m <sup>2</sup> ]	1.27
psPDmod+ [W/m <sup>2</sup> ]	2.65
E <sub>max</sub> [V/m]	57.7
Power Drift [dB]	-0.38



Measurement Report for 14Z90Q(INPAQ), SCREEN, U-NII-6, UID 10755 AAC, Channel 111 (6505.0MHz)

Device under Test Properties

Model, Manufacturer	Dimensions [mm]	IMEI	DUT Type
, 14Z90Q(INPAQ)	315.0 x 215.0 x 5.0		Laptop

Exposure Conditions

Phantom Section	Position, Test Distance [mm]	Band	Group, UID	Frequency [MHz], Channel Number	Conversion Factor
5G Air	SCREEN, 2.00	U-NII-6	WLAN, 10755-AAC	6505.0, 111	1.0

Hardware Setup

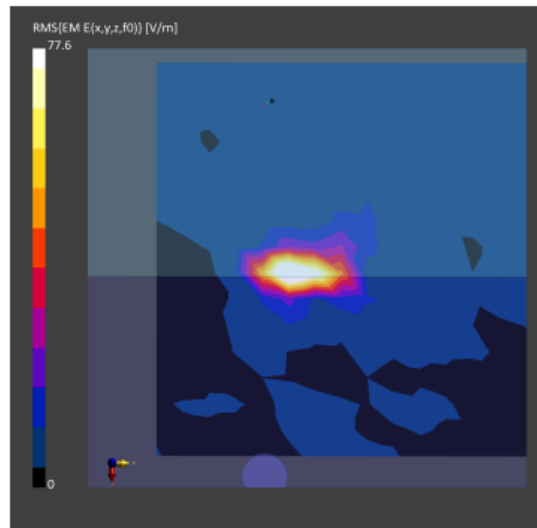
Phantom	Medium	Probe, Calibration Date	DAE, Calibration Date
mmWave- 1059	Air---	EUmWV4 - SN9544_F1-55GHz, 2021-04-01	DAE3 Sn393, 2021-04-09

Scan Setup

	5G Scan
Grid Extents [mm]	120.0 x 120.0
Grid Steps [lambda]	0.25 x 0.25
Sensor Surface [mm]	2.0
MAIA	N/A

Measurement Results

	5G Scan
Date	2022-02-24
Avg. Area [cm <sup>2</sup> ]	4.00
psPDn+ [W/m <sup>2</sup> ]	1.47
psPDtot+ [W/m <sup>2</sup> ]	2.49
psPDmod+ [W/m <sup>2</sup> ]	3.10
E <sub>max</sub> [V/m]	77.6
Power Drift [dB]	-0.76



Measurement Report for 14Z90Q(INPAQ), SCREEN, U-NII-7, UID 10755 AAC, Channel 175 (6825.0MHz)

Device under Test Properties

Model, Manufacturer	Dimensions [mm]	IMEI	DUT Type
, 14Z90Q(INPAQ)	315.0 x 215.0 x 5.0		Laptop

Exposure Conditions

Phantom Section	Position, Test Distance [mm]	Band	Group, UID	Frequency [MHz], Channel Number	Conversion Factor
5G Air	SCREEN, 2.00	U-NII-7	WLAN, 10755-AAC	6825.0, 175	1.0

Hardware Setup

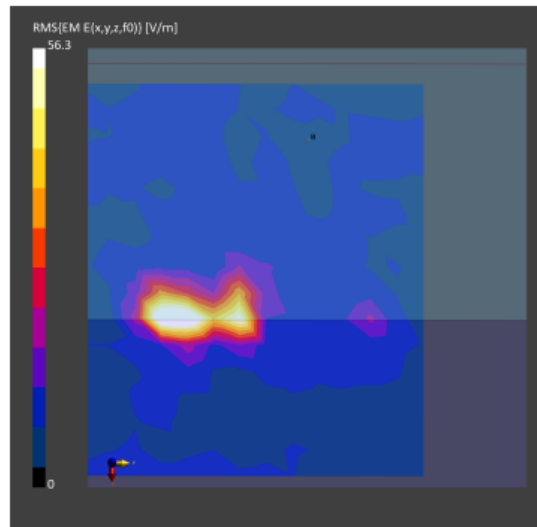
Phantom	Medium	Probe, Calibration Date	DAE, Calibration Date
mmWave- 1059	Air---	EUmmWV4 - SN9544_F1-55GHz, 2021-04-01	DAE3 Sn393, 2021-04-09

Scan Setup

	5G Scan
Grid Extents [mm]	120.0 x 120.0
Grid Steps [lambda]	0.25 x 0.25
Sensor Surface [mm]	2.0
MAIA	N/A

Measurement Results

	5G Scan
Date	2022-02-24
Avg. Area [cm <sup>2</sup> ]	4.00
psPDn+ [W/m <sup>2</sup> ]	1.68
psPDtot+ [W/m <sup>2</sup> ]	3.03
psPDmod+ [W/m <sup>2</sup> ]	3.27
E <sub>max</sub> [V/m]	56.3
Power Drift [dB]	-0.19



Measurement Report for 14Z90Q(INPAQ), SCREEN, U-NII-8, UID 10755 AAC, Channel 207 (6985.0MHz)

Device under Test Properties

Model, Manufacturer	Dimensions [mm]	IMEI	DUT Type
, 14Z90Q(INPAQ)	315.0 x 215.0 x 5.0		Laptop

Exposure Conditions

Phantom Section	Position, Test Distance [mm]	Band	Group, UID	Frequency [MHz], Channel Number	Conversion Factor
5G Air	SCREEN, 2.00	U-NII-8	WLAN, 10755-AAC	6985.0, 207	1.0

Hardware Setup

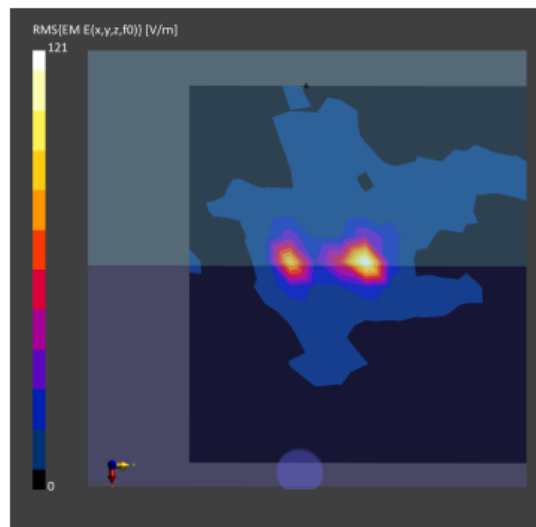
Phantom	Medium	Probe, Calibration Date	DAE, Calibration Date
mmWave- 1059	Air---	EUmWV4 - SN9544_F1-55GHz, 2021-04-01	DAE3 Sn393, 2021-04-09

Scan Setup

	5G Scan
Grid Extents [mm]	120.0 x 120.0
Grid Steps [lambda]	0.25 x 0.25
Sensor Surface [mm]	2.0
MAIA	N/A

Measurement Results

	5G Scan
Date	2022-02-24
Avg. Area [cm <sup>2</sup> ]	4.00
psPDn+ [W/m <sup>2</sup> ]	3.89
psPDtot+ [W/m <sup>2</sup> ]	4.34
psPDmod+ [W/m <sup>2</sup> ]	8.69
E <sub>max</sub> [V/m]	121
Power Drift [dB]	-0.17



**Test SKU: SKU #2 (with LUXSHARE-ICT Antenna)**  
**Antenna Chain 0 (AUX)**

Measurement Report for 14Z90Q(LUXSHARE), SCREEN, U-NII-5, UID 10755 AAC, Channel 15 (6025.0MHz)

**Device under Test Properties**

Model, Manufacturer	Dimensions [mm]	IMEI	DUT Type
, 14Z90Q(LUXSHARE)	315.0 x 215.0 x 5.0		Laptop

**Exposure Conditions**

Phantom Section	Position, Test Distance [mm]	Band	Group, UID	Frequency [MHz], Channel Number	Conversion Factor
5G Air	SCREEN, 2.00	U-NII-5	WLAN, 10755-AAC	6025.0, 15	1.0

**Hardware Setup**

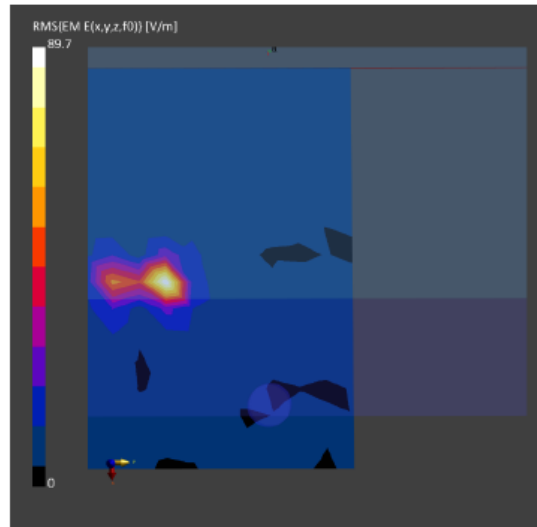
Phantom	Medium	Probe, Calibration Date	DAE, Calibration Date
mmWave- 1059	--Air-	EUmmWV4 - SN9544_F1-55GHz, 2021-04-01	DAE3 Sn393, 2021-04-09

**Scan Setup**

	5G Scan
Grid Extents [mm]	120.0 x 120.0
Grid Steps [lambda]	0.25 x 0.25
Sensor Surface [mm]	2.0
MAIA	N/A

**Measurement Results**

	5G Scan
Date	2022-02-24
Avg. Area [cm <sup>2</sup> ]	1.00
psPDn+ [W/m <sup>2</sup> ]	4.10
psPDtot+ [W/m <sup>2</sup> ]	4.33
psPDmod+ [W/m <sup>2</sup> ]	7.86
E <sub>max</sub> [V/m]	89.7
Power Drift [dB]	-0.21



Measurement Report for 14Z90Q(LUXSHARE), SCREEN, U-NII-5, UID 10755 AAC, Channel 79 (6345.0MHz)

Device under Test Properties

Model, Manufacturer	Dimensions [mm]	IMEI	DUT Type
, 14Z90Q(LUXSHARE)	315.0 x 215.0 x 5.0		Laptop

Exposure Conditions

Phantom Section	Position, Test Distance [mm]	Band	Group, UID	Frequency [MHz], Channel Number	Conversion Factor
5G Air	SCREEN, 2.00	U-NII-5	WLAN, 10755-AAC	6345.0, 79	1.0

Hardware Setup

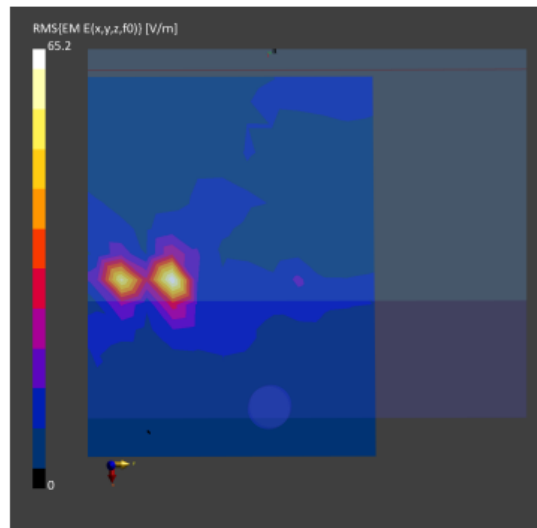
Phantom	Medium	Probe, Calibration Date	DAE, Calibration Date
mmWave- 1059	Air---	EUmmWV4 - SN9544_F1-55GHz, 2021-04-01	DAE3 Sn393, 2021-04-09

Scan Setup

	5G Scan
Grid Extents [mm]	120.0 x 120.0
Grid Steps [lambda]	0.25 x 0.25
Sensor Surface [mm]	2.0
MAIA	N/A

Measurement Results

	5G Scan
Date	2022-02-24
Avg. Area [cm <sup>2</sup> ]	1.00
psPDn+ [W/m <sup>2</sup> ]	3.57
psPDtot+ [W/m <sup>2</sup> ]	3.81
psPDmod+ [W/m <sup>2</sup> ]	4.86
E <sub>max</sub> [V/m]	65.2
Power Drift [dB]	-2.26





Measurement Report for 14Z90Q(LUXSHARE), SCREEN, U-NII-6, UID 10755 AAC, Channel 111 (6505.0MHz)

Device under Test Properties

Model, Manufacturer	Dimensions [mm]	IMEI	DUT Type
, 14Z90Q(LUXSHARE)	315.0 x 215.0 x 5.0		Laptop

Exposure Conditions

Phantom Section	Position, Test Distance [mm]	Band	Group, UID	Frequency [MHz], Channel Number	Conversion Factor
5G Air	SCREEN, 2.00	U-NII-6	WLAN, 10755-AAC	6505.0, 111	1.0

Hardware Setup

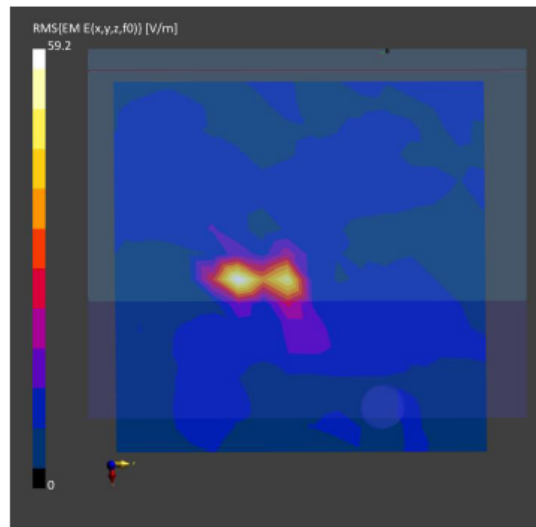
Phantom	Medium	Probe, Calibration Date	DAE, Calibration Date
mmWave- 1059	Air---	EUmmWV4 - SN9544_F1-55GHz, 2021-04-01	DAE3 Sn393, 2021-04-09

Scan Setup

	5G Scan
Grid Extents [mm]	120.0 x 120.0
Grid Steps [lambda]	0.25 x 0.25
Sensor Surface [mm]	2.0
MAIA	N/A

Measurement Results

	5G Scan
Date	2022-02-24
Avg. Area [cm <sup>2</sup> ]	1.00
psPDn+ [W/m <sup>2</sup> ]	1.97
psPDtot+ [W/m <sup>2</sup> ]	3.44
psPDmod+ [W/m <sup>2</sup> ]	3.57
E <sub>max</sub> [V/m]	59.2
Power Drift [dB]	-2.70



Measurement Report for 14Z90Q(LUXSHARE), SCREEN, U-NII-7, UID 10755 AAC, Channel 175 (6825.0MHz)

Device under Test Properties

Model, Manufacturer	Dimensions [mm]	IMEI	DUT Type
, 14Z90Q(LUXSHARE)	315.0 x 215.0 x 5.0		Laptop

Exposure Conditions

Phantom Section	Position, Test Distance [mm]	Band	Group, UID	Frequency [MHz], Channel Number	Conversion Factor
5G Air	SCREEN, 2.00	U-NII-7	WLAN, 10755-AAC	6825.0, 175	1.0

Hardware Setup

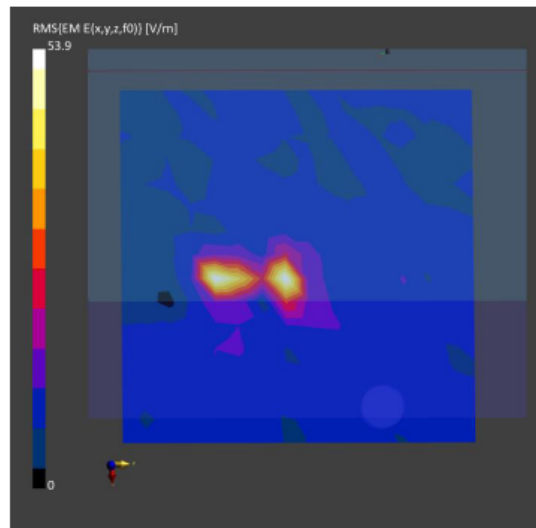
Phantom	Medium	Probe, Calibration Date	DAE, Calibration Date
mmWave- 1059	Air---	EUmWV4 - SN9544_F1-55GHz, 2021-04-01	DAE3 Sn393, 2021-04-09

Scan Setup

	5G Scan
Grid Extents [mm]	120.0 x 120.0
Grid Steps [lambda]	0.25 x 0.25
Sensor Surface [mm]	2.0
MAIA	N/A

Measurement Results

	5G Scan
Date	2022-02-24
Avg. Area [cm <sup>2</sup> ]	1.00
psPDn+ [W/m <sup>2</sup> ]	2.22
psPDtot+ [W/m <sup>2</sup> ]	2.58
psPDmod+ [W/m <sup>2</sup> ]	3.07
E <sub>max</sub> [V/m]	53.9
Power Drift [dB]	0.79



Measurement Report for 14Z90Q(LUXSHARE), SCREEN, U-NII-8, UID 10755 AAC, Channel 207 (6985.0MHz)

Device under Test Properties

Model, Manufacturer	Dimensions [mm]	IMEI	DUT Type
, 14Z90Q(LUXSHARE)	315.0 x 215.0 x 5.0		Laptop

Exposure Conditions

Phantom Section	Position, Test Distance [mm]	Band	Group, UID	Frequency [MHz], Channel Number	Conversion Factor
5G Air	SCREEN, 2.00	U-NII-8	WLAN, 10755-AAC	6985.0, 207	1.0

Hardware Setup

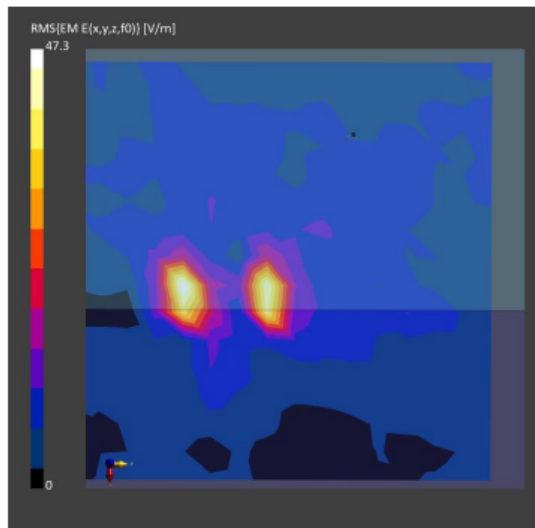
Phantom	Medium	Probe, Calibration Date	DAE, Calibration Date
mmWave- 1059	Air---	EUmmWV4 - SN9544_F1-55GHz, 2021-04-01	DAE3 Sn393, 2021-04-09

Scan Setup

	5G Scan
Grid Extents [mm]	120.0 x 120.0
Grid Steps [lambda]	0.25 x 0.25
Sensor Surface [mm]	2.0
MAIA	N/A

Measurement Results

	5G Scan
Date	2022-02-24
Avg. Area [cm <sup>2</sup> ]	1.00
psPDn+ [W/m <sup>2</sup> ]	1.25
psPDtot+ [W/m <sup>2</sup> ]	2.18
psPDmod+ [W/m <sup>2</sup> ]	2.35
E <sub>max</sub> [V/m]	47.3
Power Drift [dB]	0.22



## Test SKU: SKU #2 (with LUXSHARE-ICT Antenna) Antenna Chain 1 (Main)

Measurement Report for 14Z90Q(LUXSHARE), SCREEN, U-NII-5, UID 10755 AAC, Channel 15 (6025.0MHz)

### Device under Test Properties

Model, Manufacturer	Dimensions [mm]	IMEI	DUT Type
, 14Z90Q(LUXSHARE)	315.0 x 215.0 x 5.0		Laptop

### Exposure Conditions

Phantom Section	Position, Test Distance [mm]	Band	Group, UID	Frequency [MHz], Channel Number	Conversion Factor
5G Air	SCREEN, 2.00	U-NII-5	WLAN, 10755-AAC	6025.0, 15	1.0

### Hardware Setup

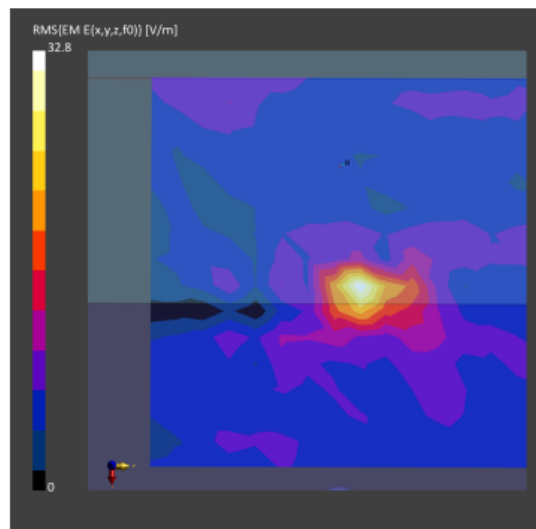
Phantom	Medium	Probe, Calibration Date	DAE, Calibration Date
mmWave- 1059	Air---	EUmmWV4 - SN9544_F1-55GHz, 2021-04-01	DAE3 Sn393, 2021-04-09

### Scan Setup

	5G Scan
Grid Extents [mm]	120.0 x 120.0
Grid Steps [lambda]	0.25 x 0.25
Sensor Surface [mm]	2.0
MAIA	N/A

### Measurement Results

	5G Scan
Date	2022-02-24
Avg. Area [cm <sup>2</sup> ]	1.00
psPDn+ [W/m <sup>2</sup> ]	0.530
psPDtot+ [W/m <sup>2</sup> ]	0.668
psPDmod+ [W/m <sup>2</sup> ]	0.882
E <sub>max</sub> [V/m]	32.8
Power Drift [dB]	-2.15



Measurement Report for 14Z90Q(LUXSHARE), SCREEN, U-NII-5, UID 10755 AAC, Channel 79 (6345.0MHz)

Device under Test Properties

Model, Manufacturer	Dimensions [mm]	IMEI	DUT Type
, 14Z90Q(LUXSHARE)	315.0 x 215.0 x 5.0		Laptop

Exposure Conditions

Phantom Section	Position, Test Distance [mm]	Band	Group, UID	Frequency [MHz], Channel Number	Conversion Factor
5G Air	SCREEN, 2.00	U-NII-5	WLAN, 10755-AAC	6345.0, 79	1.0

Hardware Setup

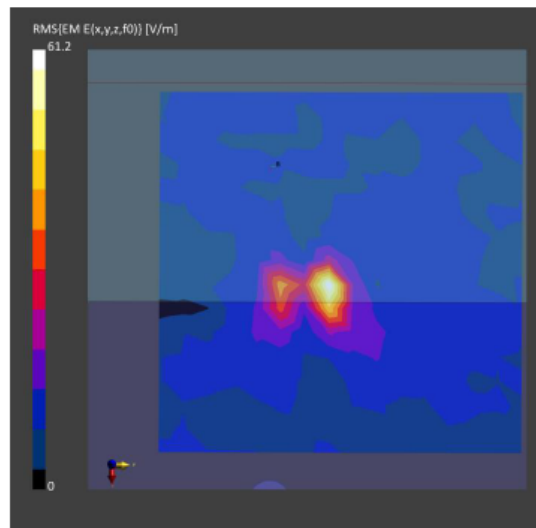
Phantom	Medium	Probe, Calibration Date	DAE, Calibration Date
mmWave- 1059	Air---	EUmmWV4 - SN9544_F1-55GHz, 2021-04-01	DAE3 Sn393, 2021-04-09

Scan Setup

	5G Scan
Grid Extents [mm]	120.0 x 120.0
Grid Steps [lambda]	0.25 x 0.25
Sensor Surface [mm]	2.0
MAIA	N/A

Measurement Results

	5G Scan
Date	2022-02-24
Avg. Area [cm <sup>2</sup> ]	1.00
psPDn+ [W/m <sup>2</sup> ]	1.76
psPDtot+ [W/m <sup>2</sup> ]	2.51
psPDmod+ [W/m <sup>2</sup> ]	2.74
E <sub>max</sub> [V/m]	61.2
Power Drift [dB]	-0.03



Measurement Report for 14Z90Q(LUXSHARE), SCREEN, U-NII-6, UID 10755 AAC, Channel 111 (6505.0MHz)

Device under Test Properties

Model, Manufacturer	Dimensions [mm]	IMEI	DUT Type
, 14Z90Q(LUXSHARE)	315.0 x 215.0 x 5.0		Laptop

Exposure Conditions

Phantom Section	Position, Test Distance [mm]	Band	Group, UID	Frequency [MHz], Channel Number	Conversion Factor
5G Air	SCREEN, 2.00	U-NII-6	WLAN, 10755-AAC	6505.0, 111	1.0

Hardware Setup

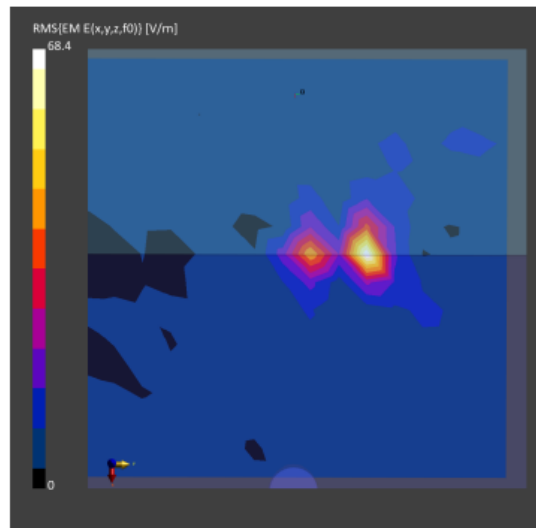
Phantom	Medium	Probe, Calibration Date	DAE, Calibration Date
mmWave- 1059	Air---	EUmmWV4 - SN9544_F1-55GHz, 2021-04-01	DAE3 Sn393, 2021-04-09

Scan Setup

	5G Scan
Grid Extents [mm]	120.0 x 120.0
Grid Steps [lambda]	0.25 x 0.25
Sensor Surface [mm]	2.0
MAIA	N/A

Measurement Results

	5G Scan
Date	2022-02-24
Avg. Area [cm <sup>2</sup> ]	1.00
psPDn+ [W/m <sup>2</sup> ]	1.25
psPDtot+ [W/m <sup>2</sup> ]	1.69
psPDmod+ [W/m <sup>2</sup> ]	2.34
E <sub>max</sub> [V/m]	68.4
Power Drift [dB]	-0.38



Measurement Report for 14Z90Q(LUXSHARE), SCREEN, U-NII-7, UID 10755 AAC, Channel 175 (6825.0MHz)

Device under Test Properties

Model, Manufacturer	Dimensions [mm]	IMEI	DUT Type
, 14Z90Q(LUXSHARE)	315.0 x 215.0 x 5.0		Laptop

Exposure Conditions

Phantom Section	Position, Test Distance [mm]	Band	Group, UID	Frequency [MHz], Channel Number	Conversion Factor
5G Air	SCREEN, 2.00	U-NII-7	WLAN, 10755-AAC	6825.0, 175	1.0

Hardware Setup

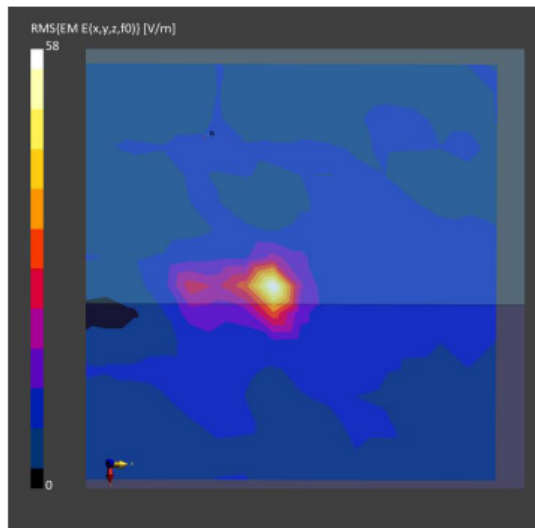
Phantom	Medium	Probe, Calibration Date	DAE, Calibration Date
mmWave- 1059	Air---	EUmmWV4 - SN9544_F1-55GHz, 2021-04-01	DAE3 Sn393, 2021-04-09

Scan Setup

	5G Scan
Grid Extents [mm]	120.0 x 120.0
Grid Steps [lambda]	0.25 x 0.25
Sensor Surface [mm]	2.0
MAIA	N/A

Measurement Results

	5G Scan
Date	2022-02-24
Avg. Area [cm <sup>2</sup> ]	1.00
psPDn+ [W/m <sup>2</sup> ]	1.55
psPDtot+ [W/m <sup>2</sup> ]	2.48
psPDmod+ [W/m <sup>2</sup> ]	2.59
E <sub>max</sub> [V/m]	58.0
Power Drift [dB]	0.03



Measurement Report for 14Z90Q(LUXSHARE), SCREEN, U-NII-8, UID 10755 AAC, Channel 207 (6985.0MHz)

Device under Test Properties

Model, Manufacturer	Dimensions [mm]	IMEI	DUT Type
, 14Z90Q(LUXSHARE)	315.0 x 215.0 x 5.0		Laptop

Exposure Conditions

Phantom Section	Position, Test Distance [mm]	Band	Group, UID	Frequency [MHz], Channel Number	Conversion Factor
5G Air	SCREEN, 2.00	U-NII-8	WLAN, 10755-AAC	6985.0, 207	1.0

Hardware Setup

Phantom	Medium	Probe, Calibration Date	DAE, Calibration Date
mmWave- 1059	Air---	EUmmWV4 - SN9544_F1-55GHz, 2021-04-01	DAE3 Sn393, 2021-04-09

Scan Setup

	5G Scan
Grid Extents [mm]	120.0 x 120.0
Grid Steps [lambda]	0.25 x 0.25
Sensor Surface [mm]	2.0
MAIA	N/A

Measurement Results

	5G Scan
Date	2022-02-24
Avg. Area [cm <sup>2</sup> ]	1.00
psPDn+ [W/m <sup>2</sup> ]	2.00
psPDtot+ [W/m <sup>2</sup> ]	2.16
psPDmod+ [W/m <sup>2</sup> ]	2.80
E <sub>max</sub> [V/m]	49.5
Power Drift [dB]	-1.35

