

EUT Internal Photos

Figure 7
Internal View (With White Keyboard)



Figure 8
Internal View (Removed Cover)

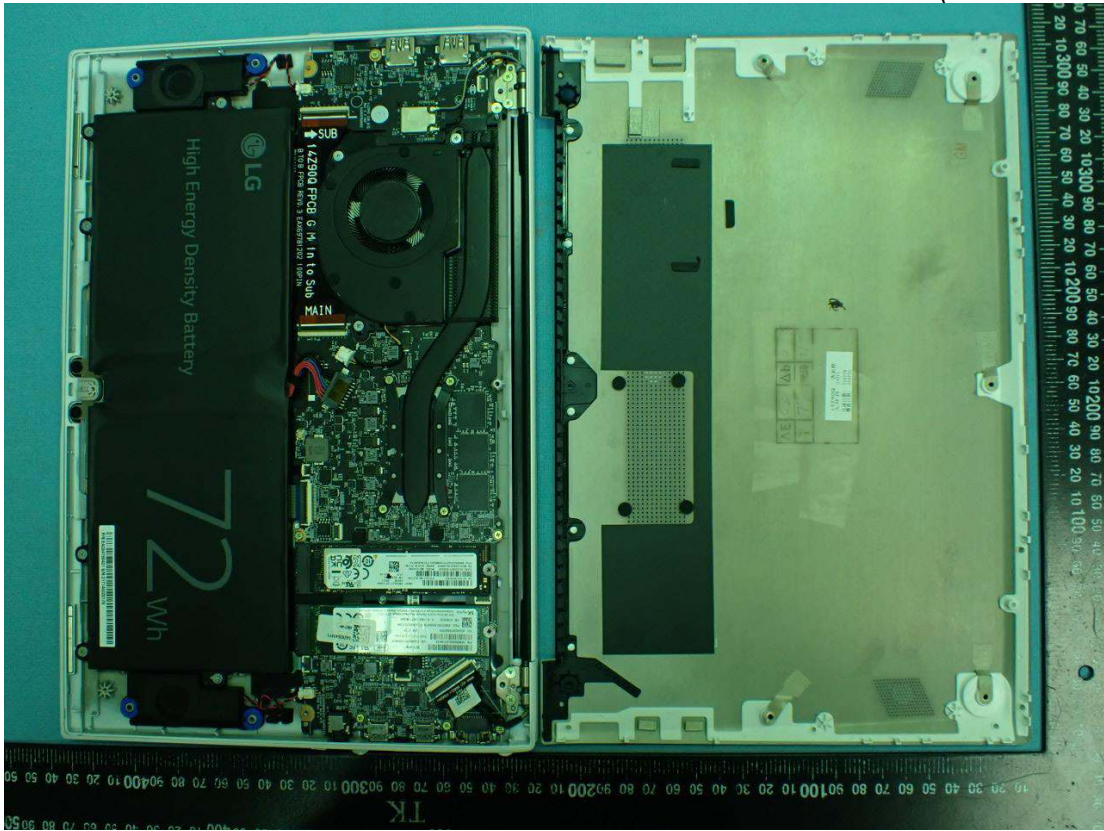


Figure 9
Internal View (Removed Components)

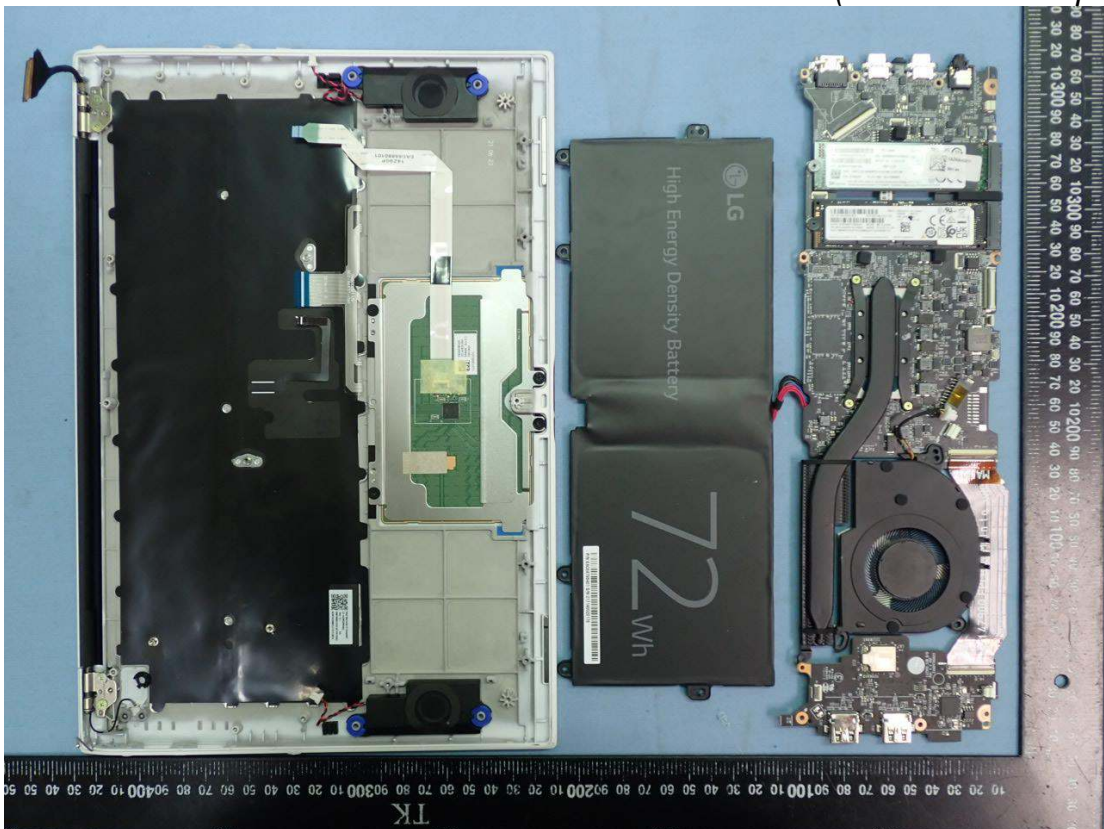


Figure 10
(Queen MAIN B/D PCB) GM Main Board, Front View

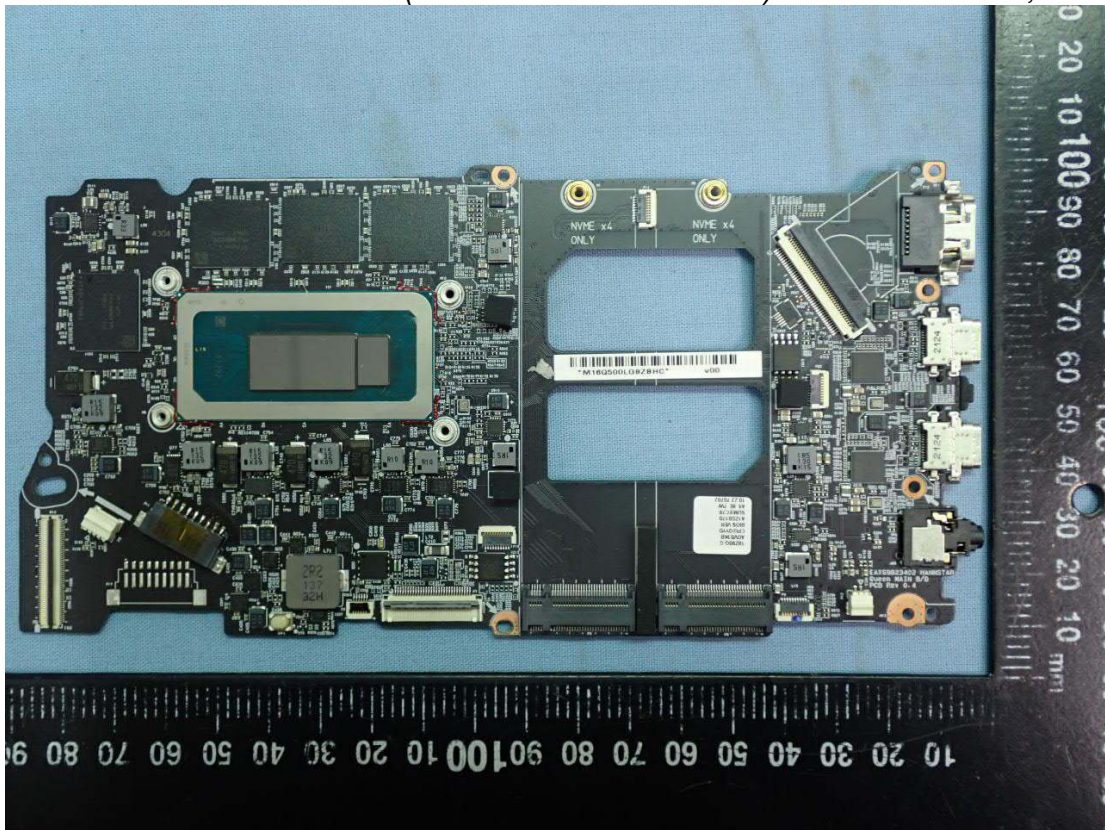


Figure 11
(Queen MAIN B/D PCB) GM Main Board, Back View

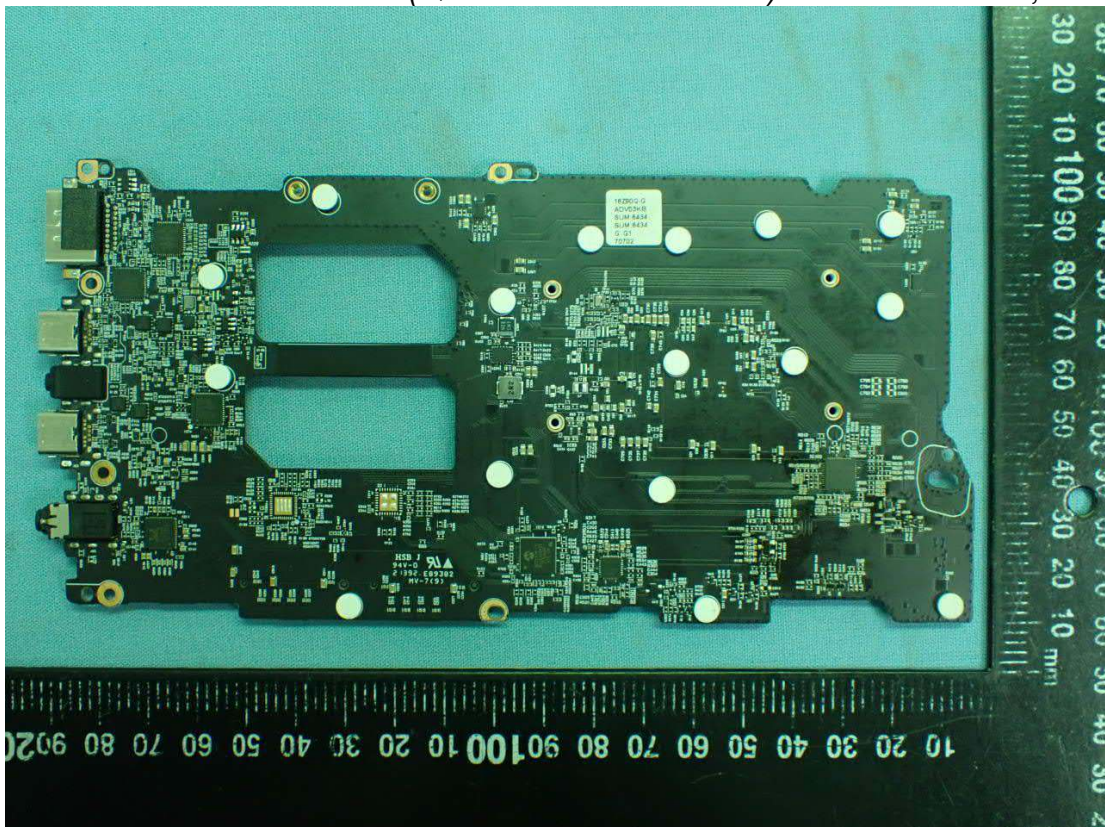


Figure 12
WLAN SUB Board, Front View

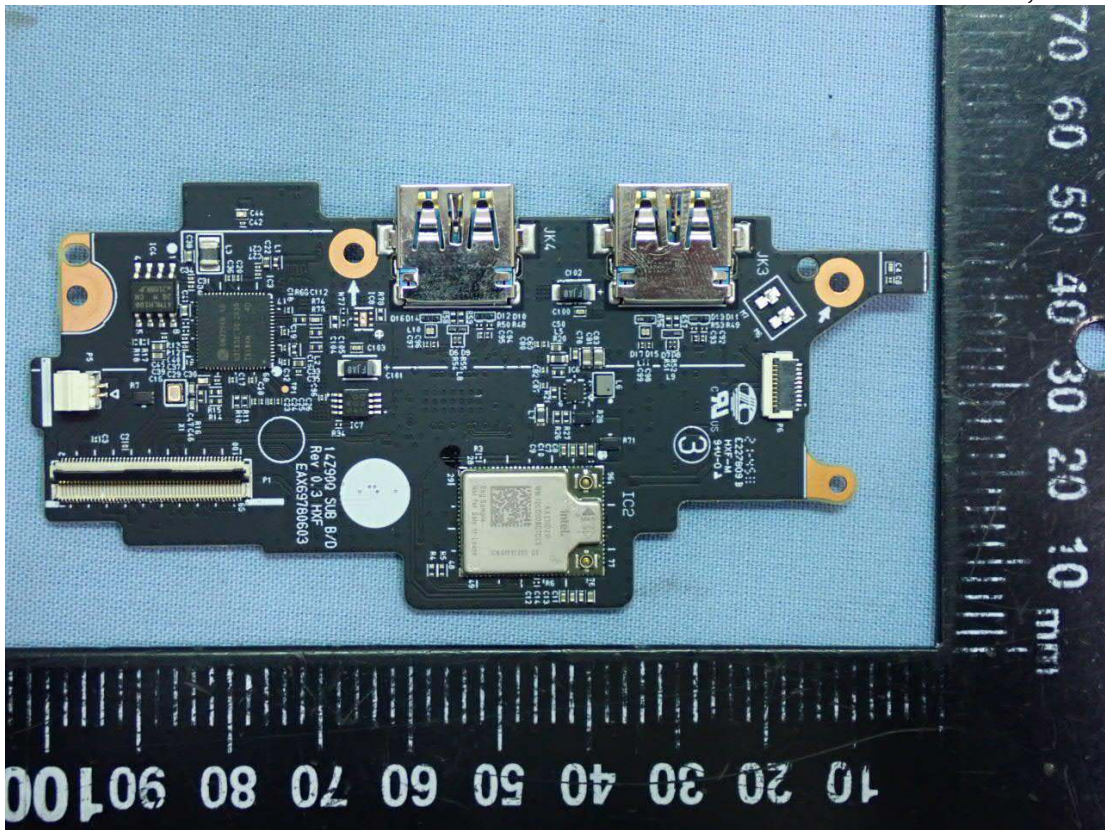


Figure 13
WLAN SUB Board, Back View

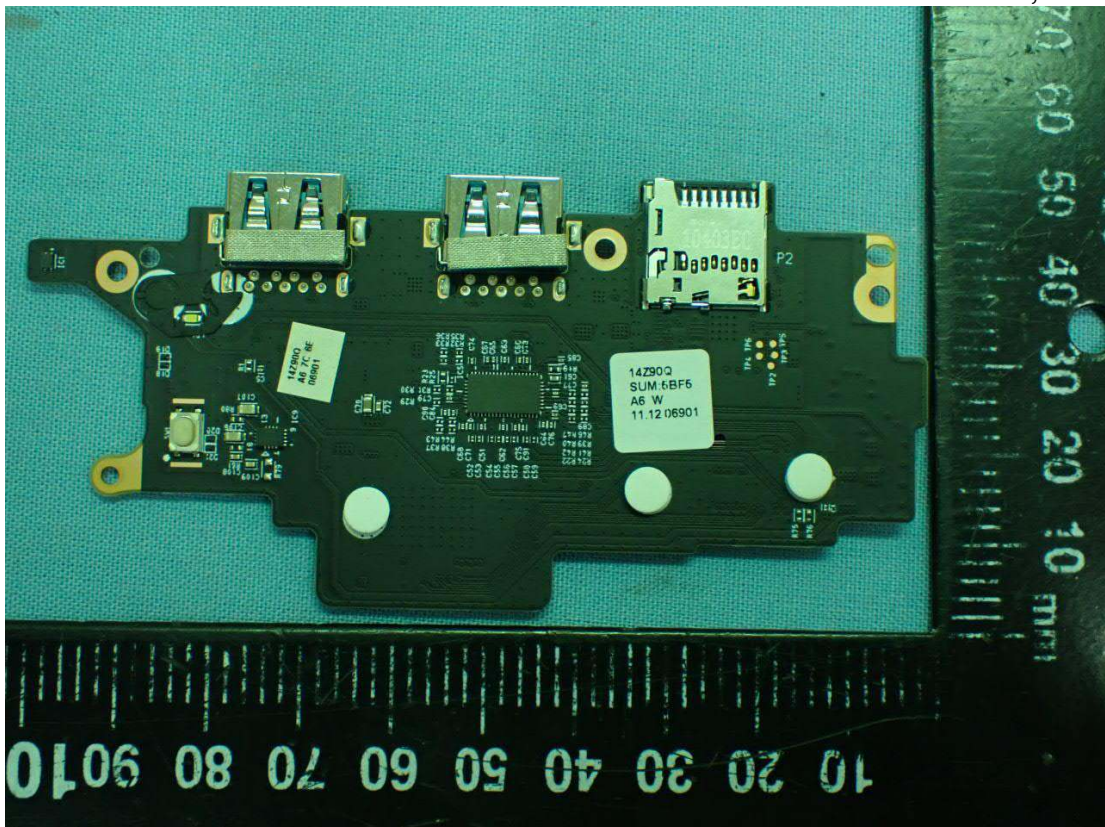


Figure 14
WLAN Combo Card, Front View

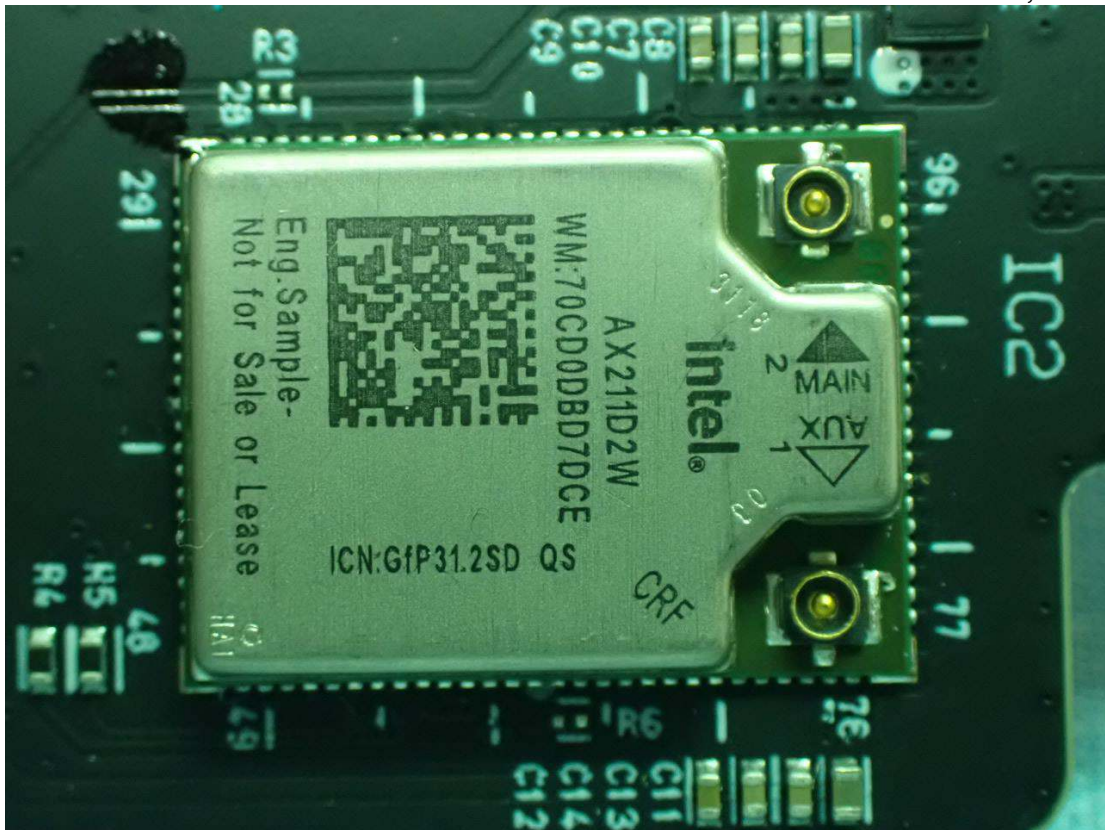


Figure 15
WLAN Combo Card, Without Shield and Back View

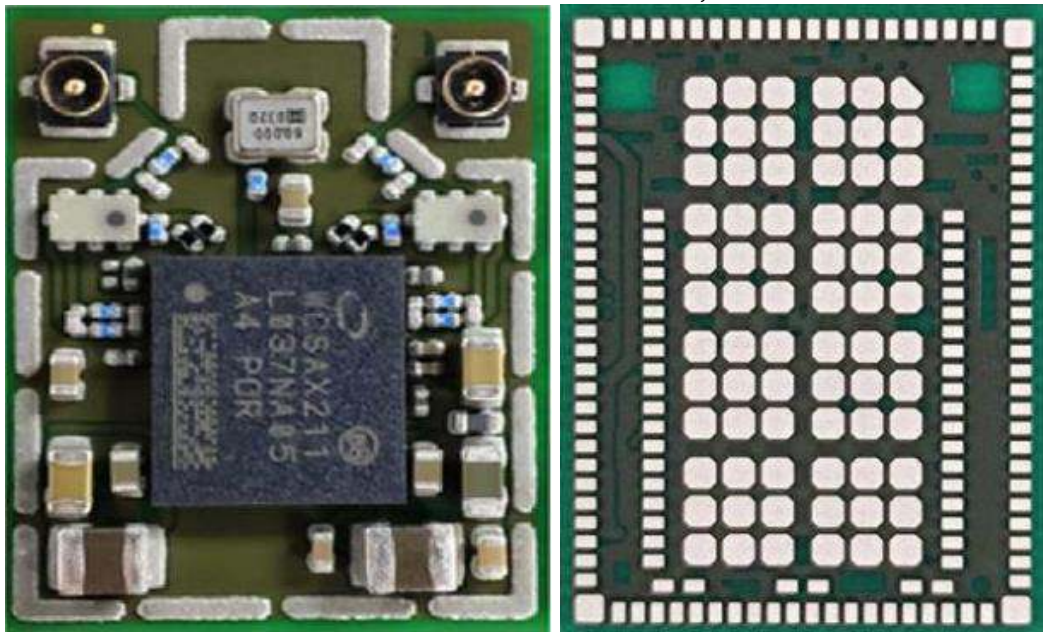


Figure 16
Battery Pack (72Wh), Front View



Figure 17
Battery Pack (72Wh), Back View

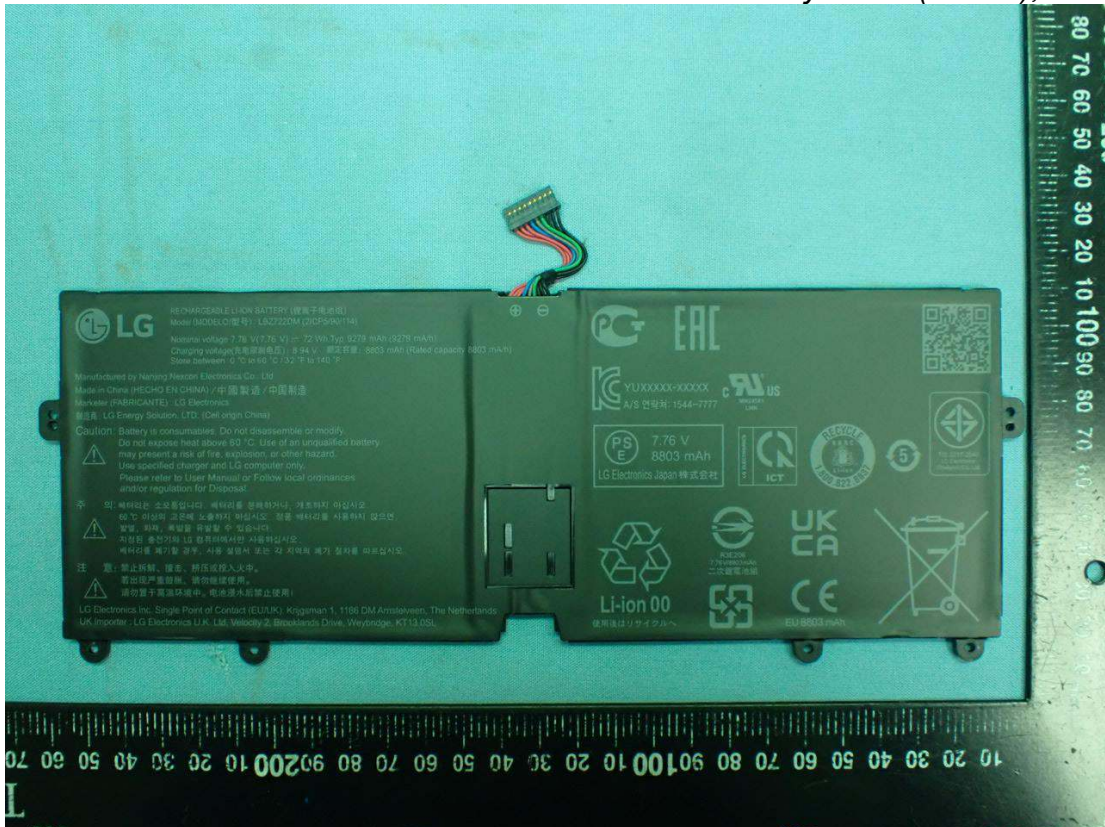


Figure 18
SSD, SK hynix, (1TB), Front View



Figure 19
SSD, SK hynix, (1TB), Back View

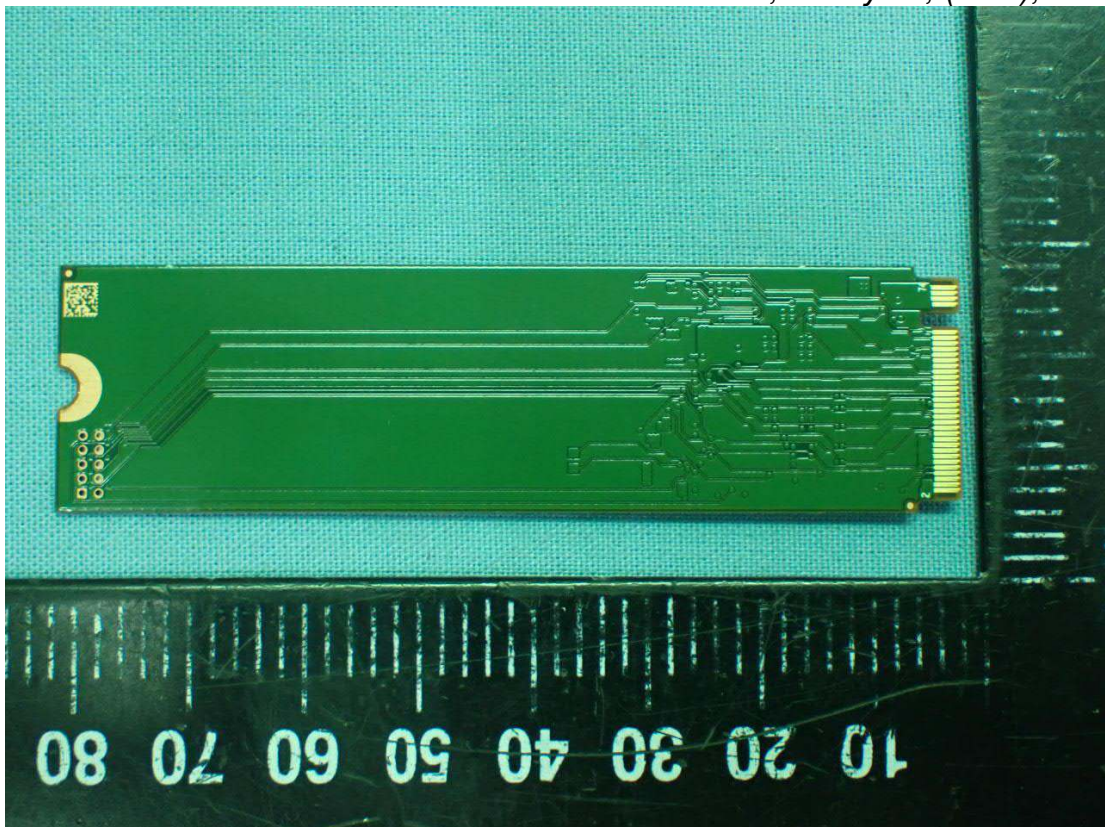


Figure 20
SSD, SK hynix, (512GB), Front View



Figure 21
SSD, SK hynix, (512GB), Back View

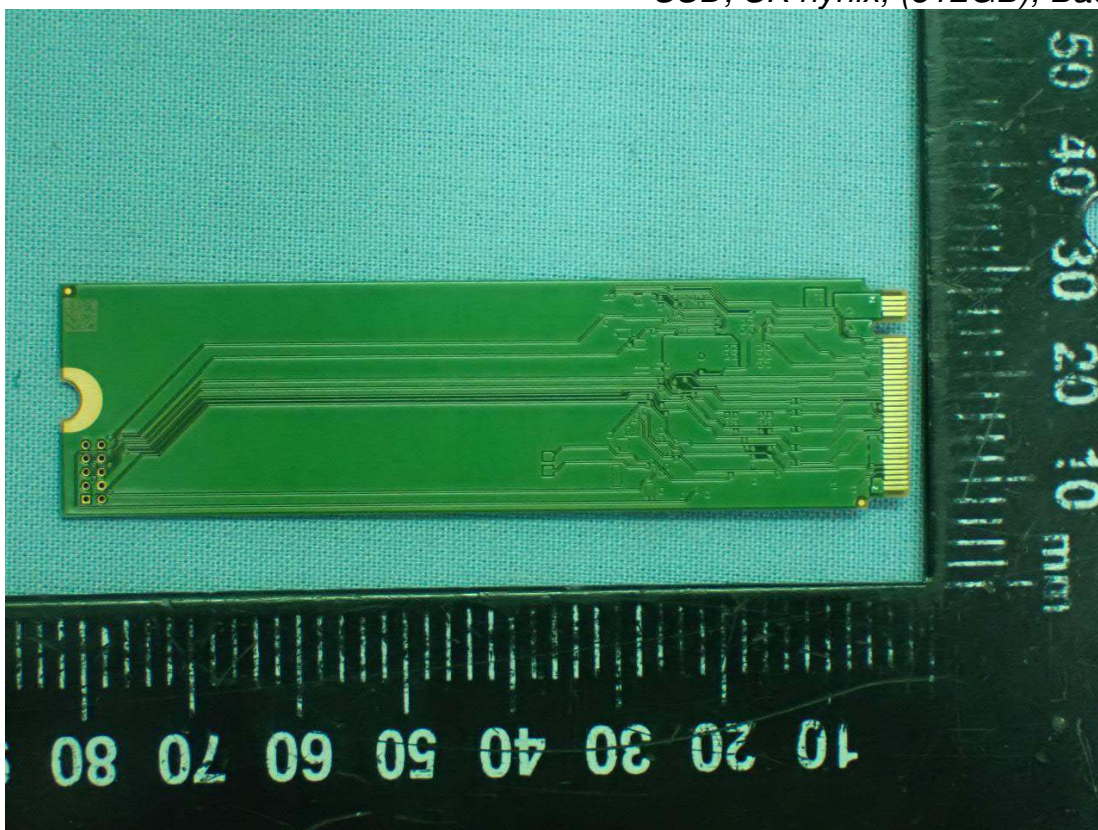


Figure 22
SSD, Samsung, (1TB), Front View



Figure 23
SSD, Samsung, (1TB), Back View

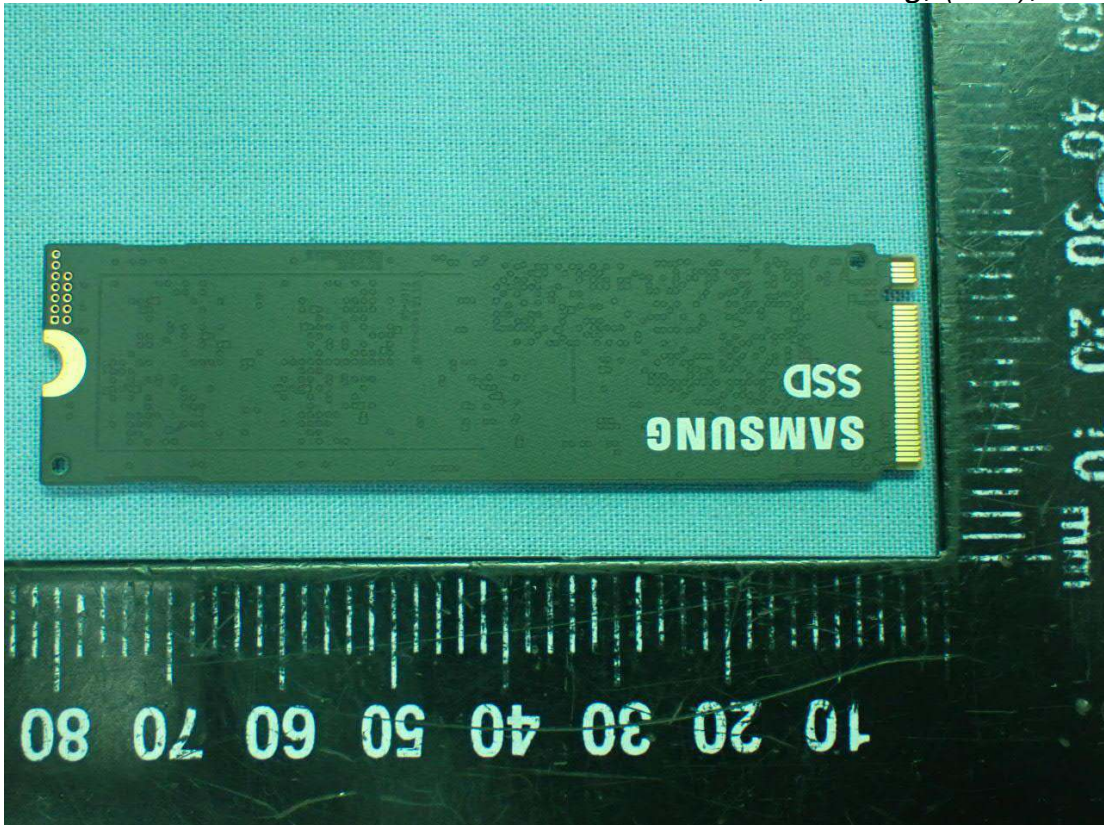


Figure 24
SSD, Samsung, (512GB), Front View



Figure 25
SSD, Samsung, (512GB), Back View

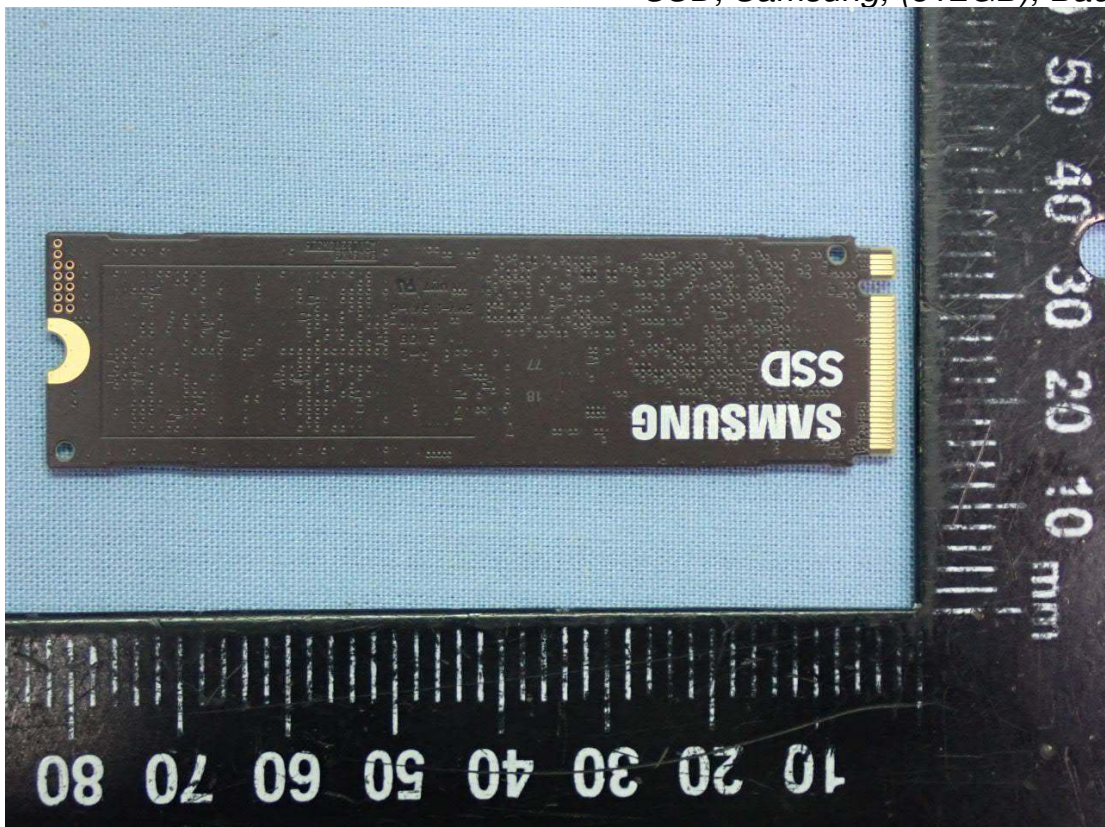


Figure 26
SSD, Samsung, (256GB), Front View

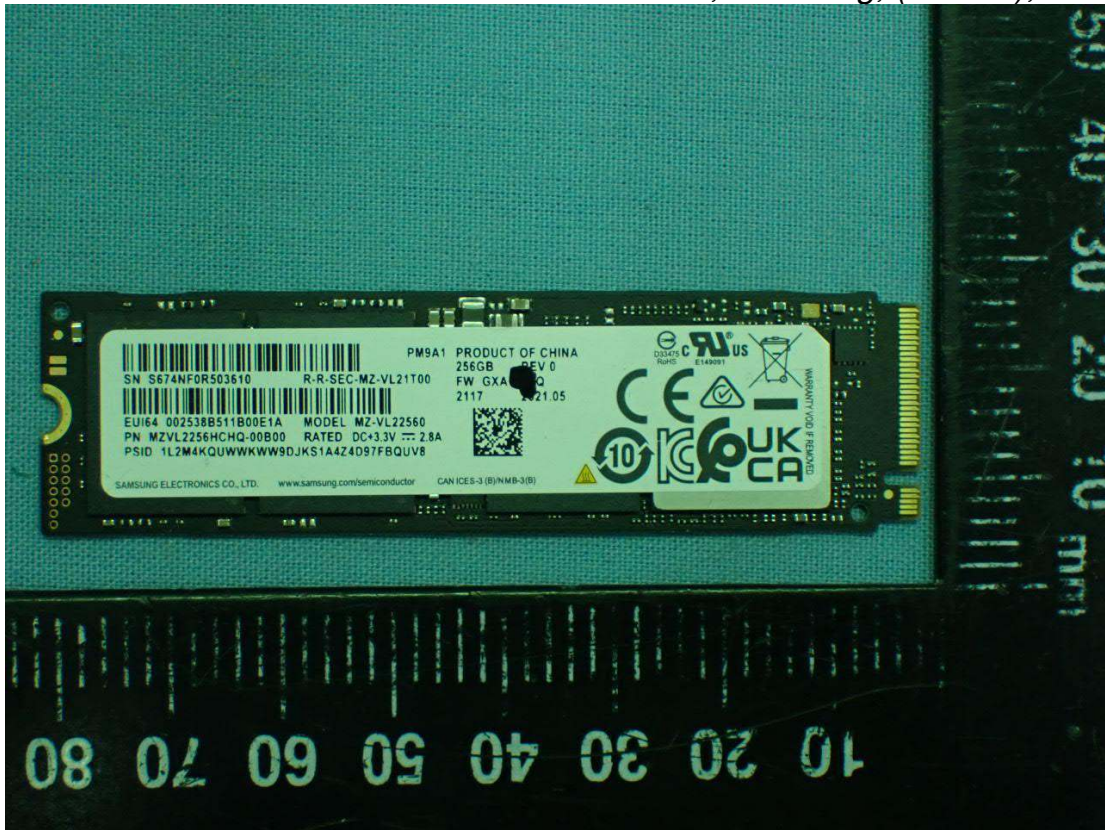


Figure 27
SSD, Samsung, (256GB), Back View

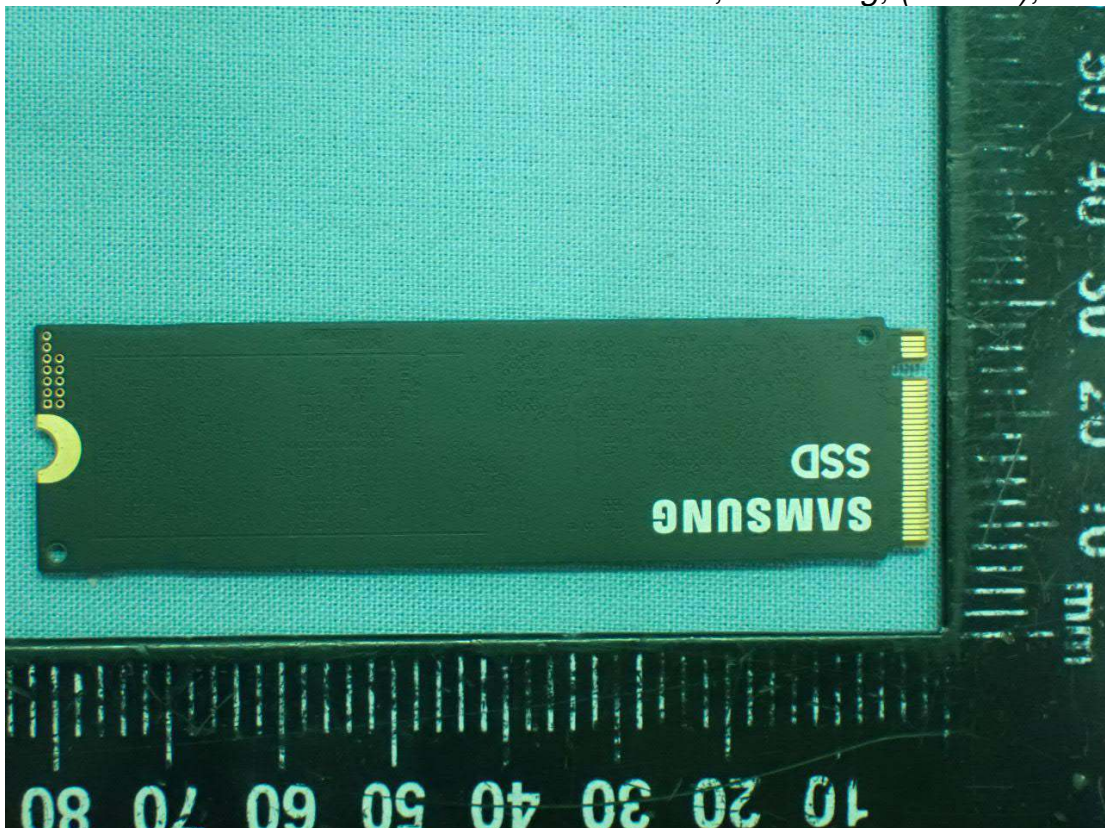


Figure 28
LCD Panel, Front View



Figure 29
LCD Panel, Back & Label View



ZB
LP148WU1 (SP)(F1) CT:CXXXX01FYFZ7BU
RoHS Verified
MADE IN CHINA
148LCEK900FUZ 9K1S

Figure 30
WA-P-LELE-04-008, WLAN Combo Antenna

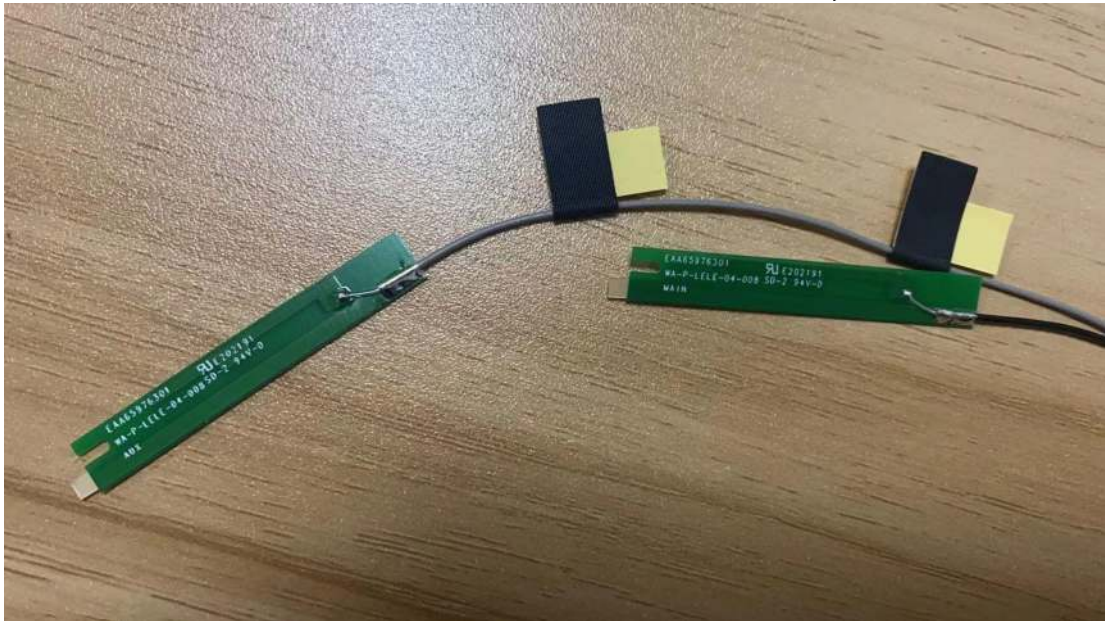


Figure 31
WA-P-LELE-04-008, WLAN Combo Antenna Position

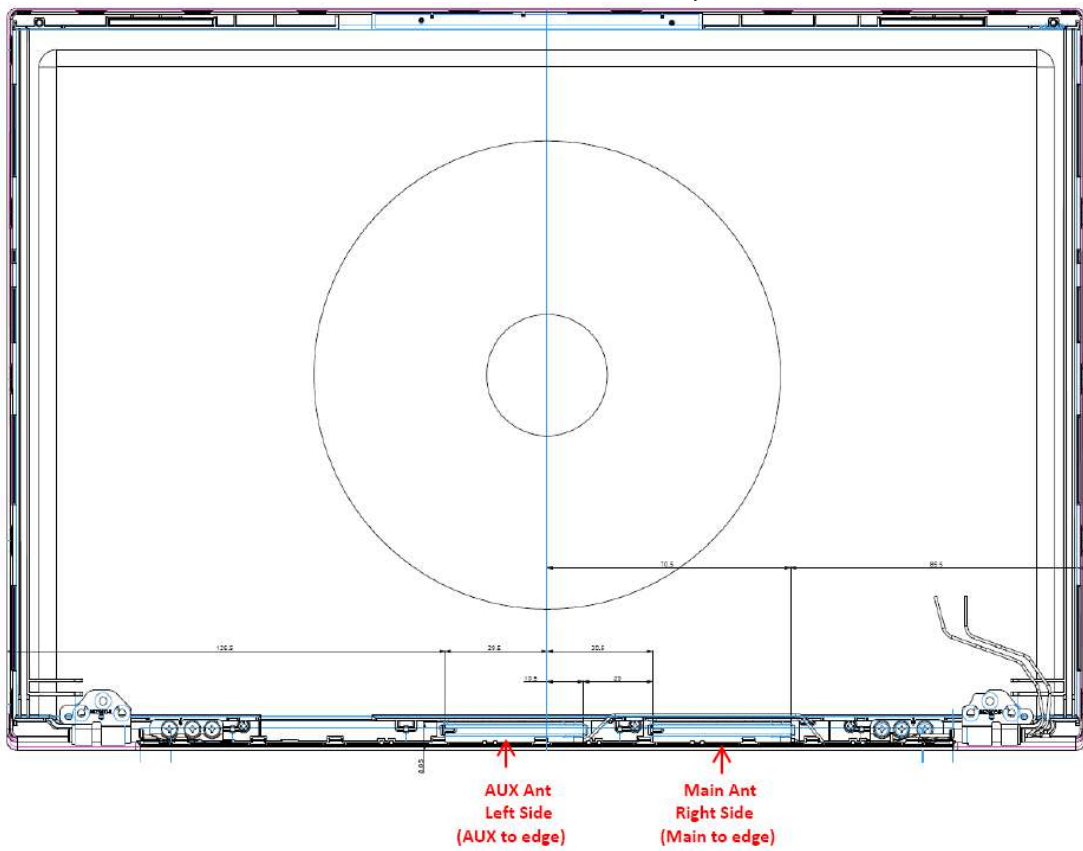


Figure 32
L1LRF007-CS-H, WLAN Combo Antenna

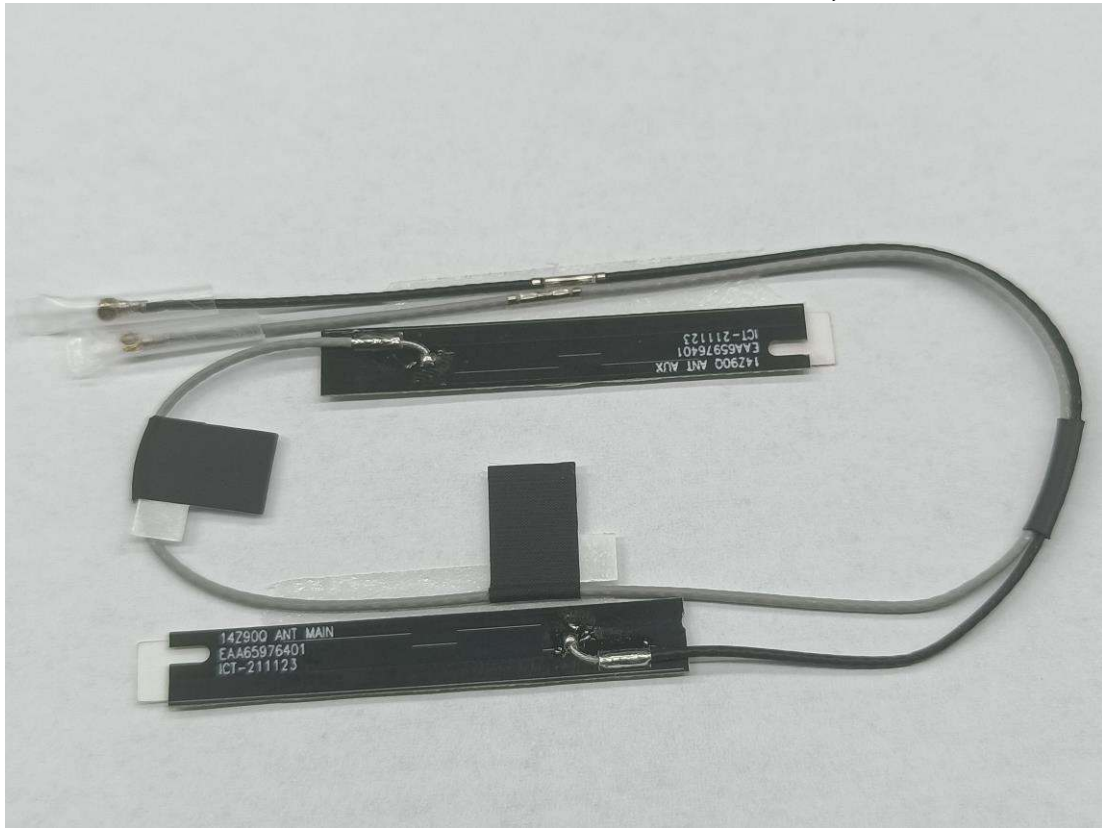


Figure 33
L1LRF007-CS-H, WLAN Combo Antenna Position

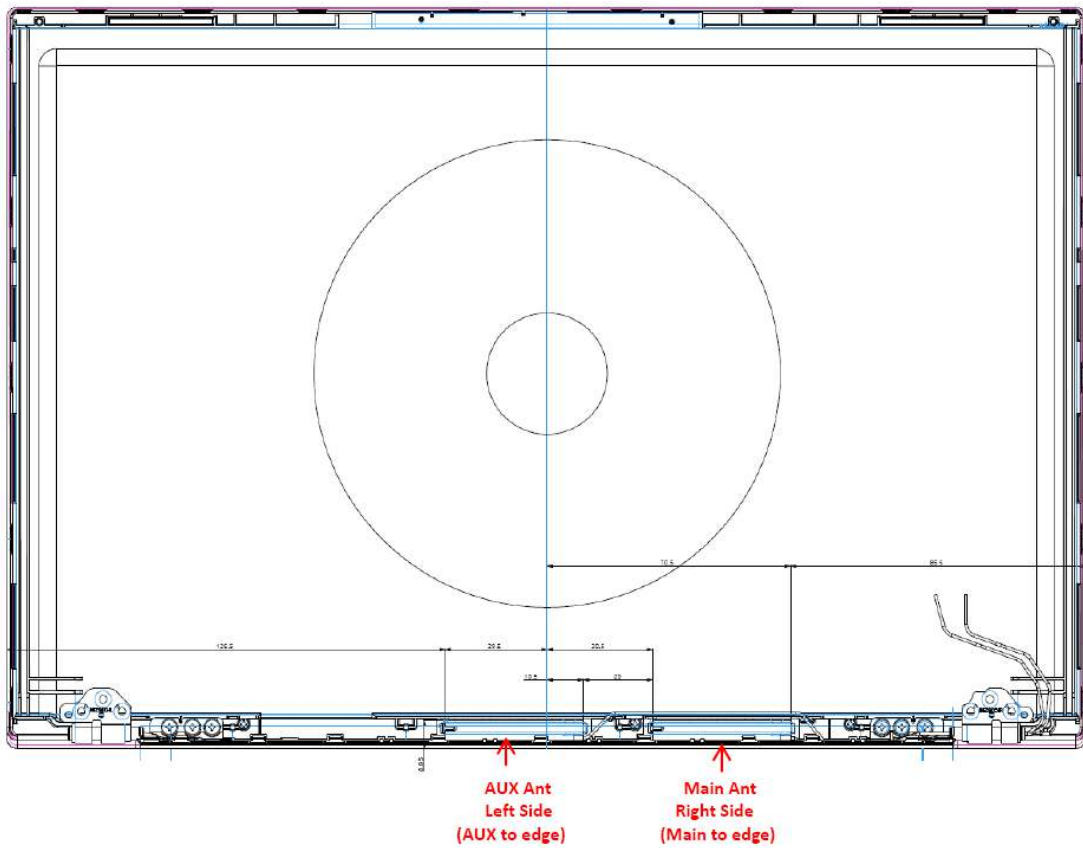


Figure 34
100 Megabit Ethernet, LAN Gender View (White), Front View

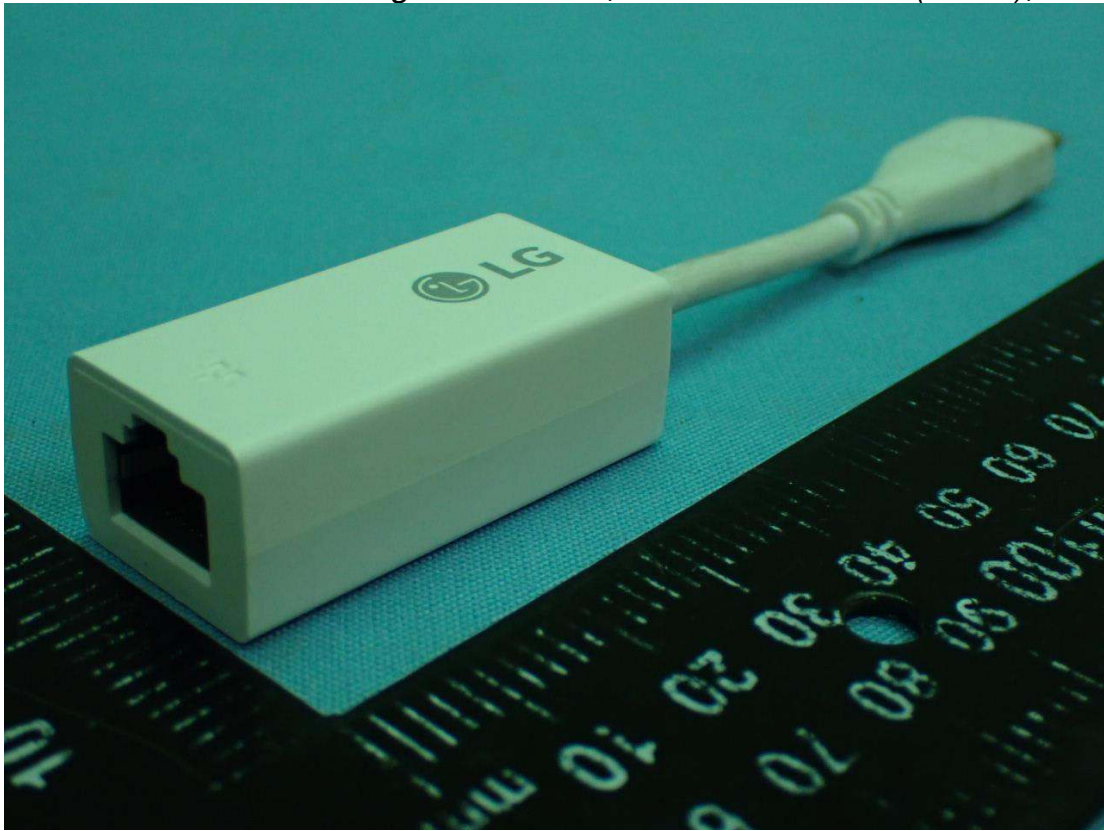


Figure 35
100 Megabit Ethernet, LAN Gender View (White), Front View

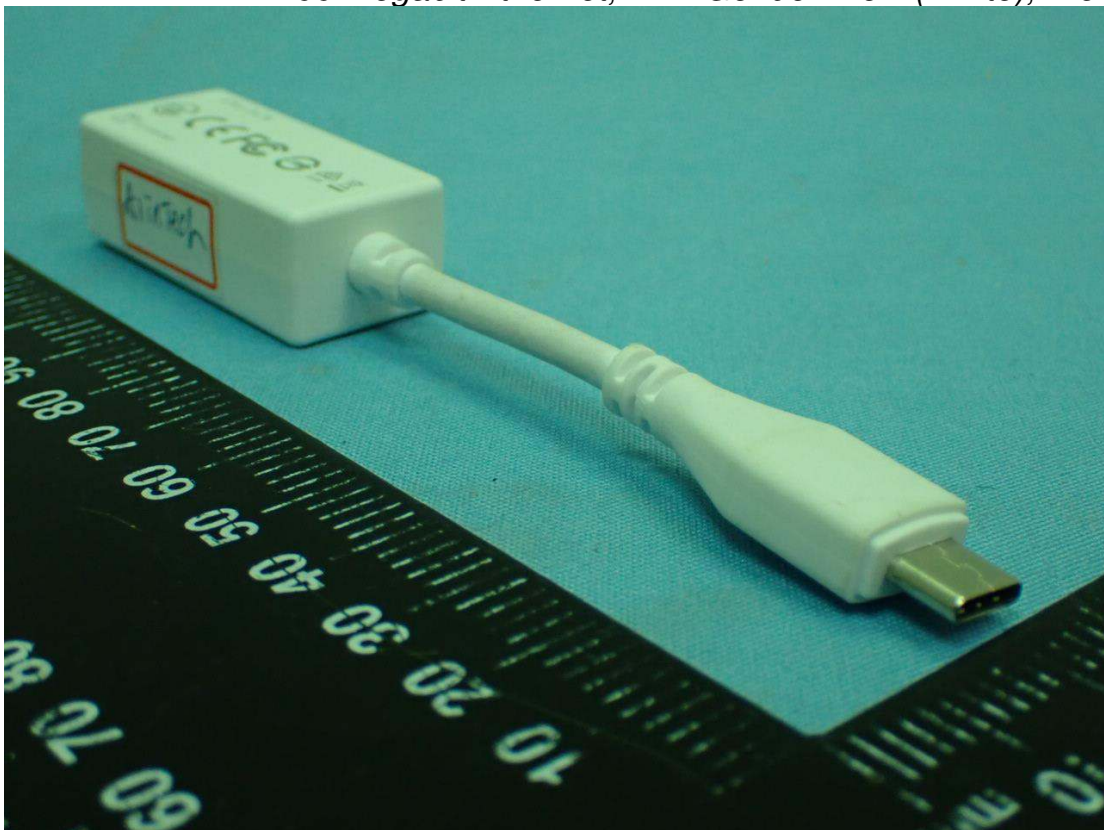


Figure 36
1000 Megabit Ethernet, LAN Gender (Black), Front View

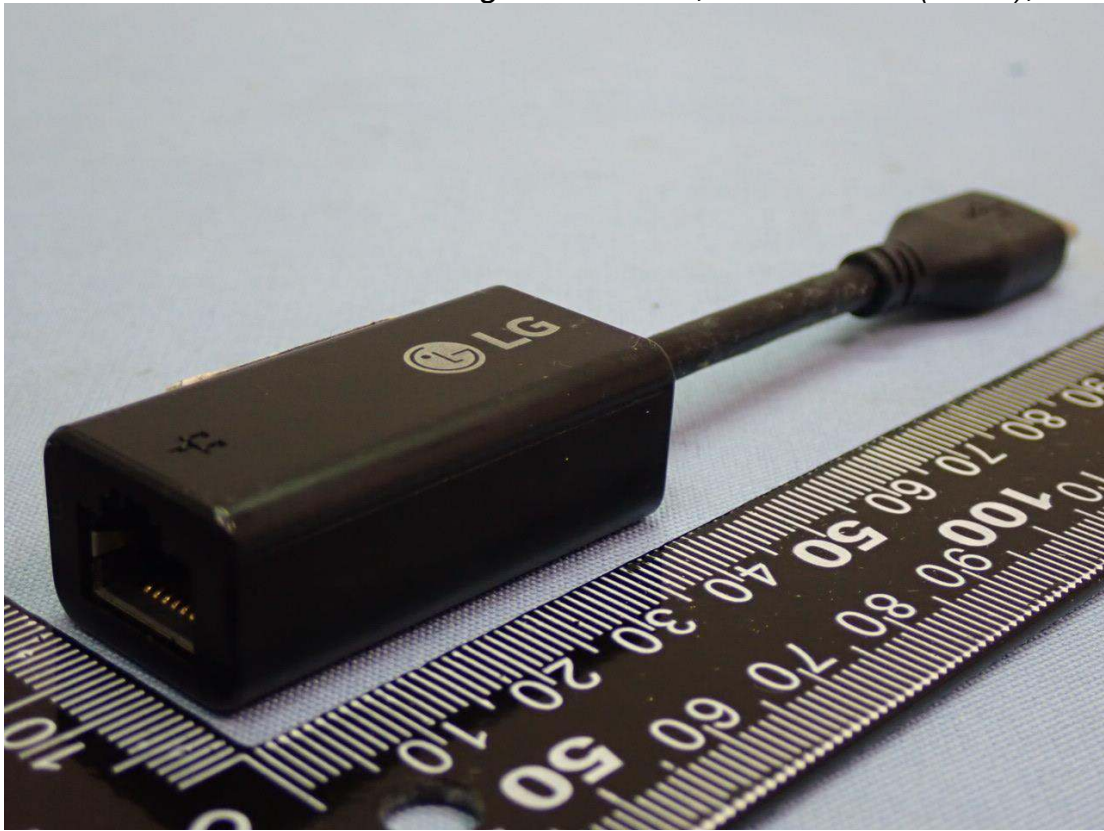


Figure 37
1000 Megabit Ethernet, LAN Gender (Black), Back View

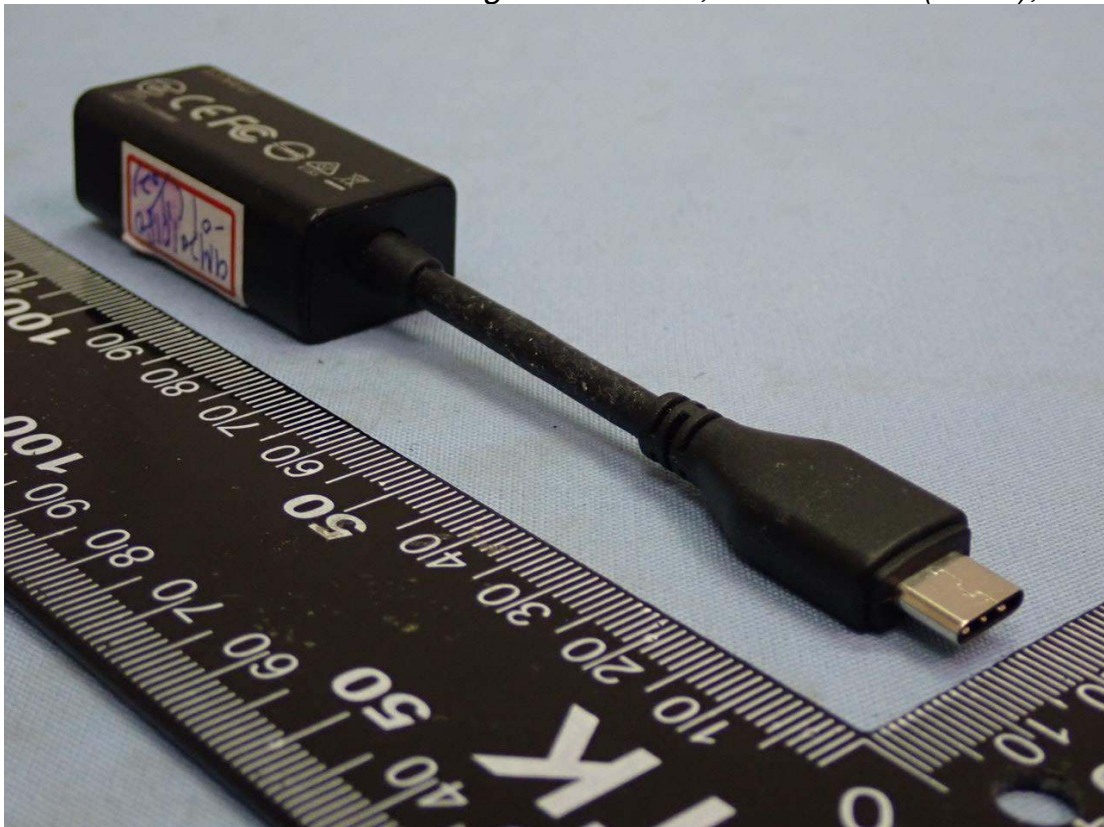


Figure 38
1000 Megabit Ethernet, LAN Gender View (White), Front View

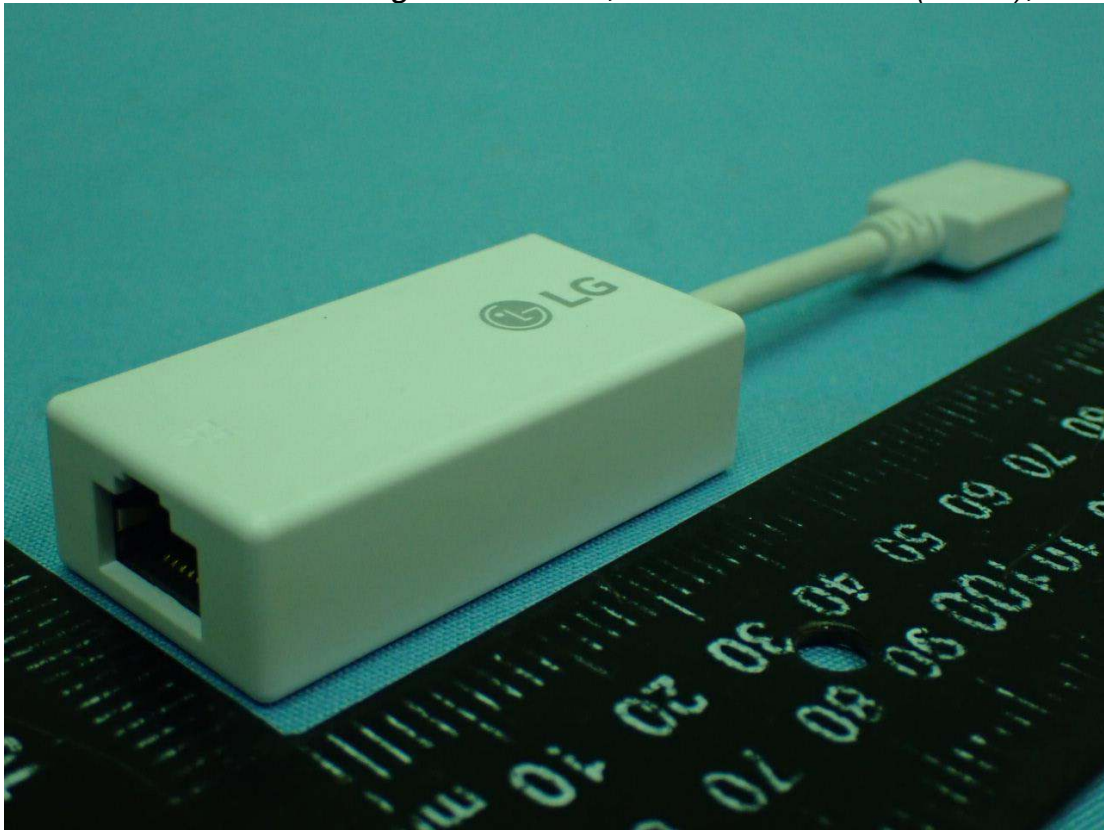
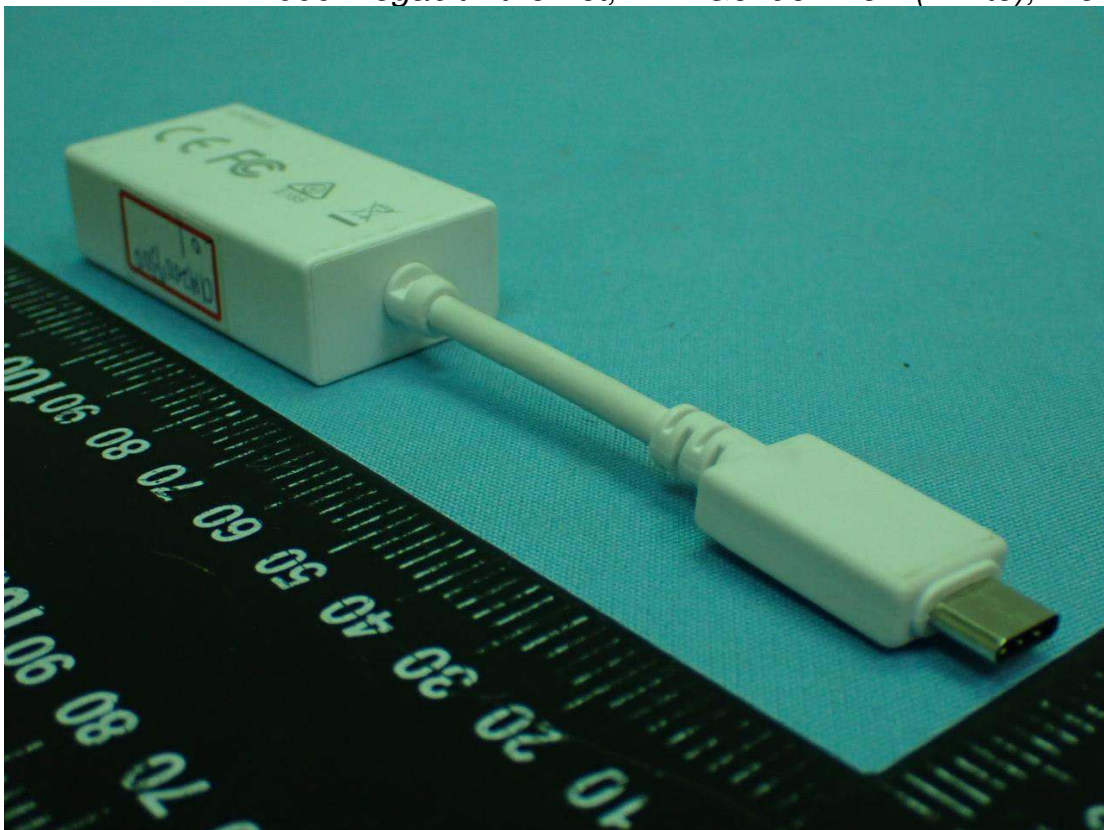
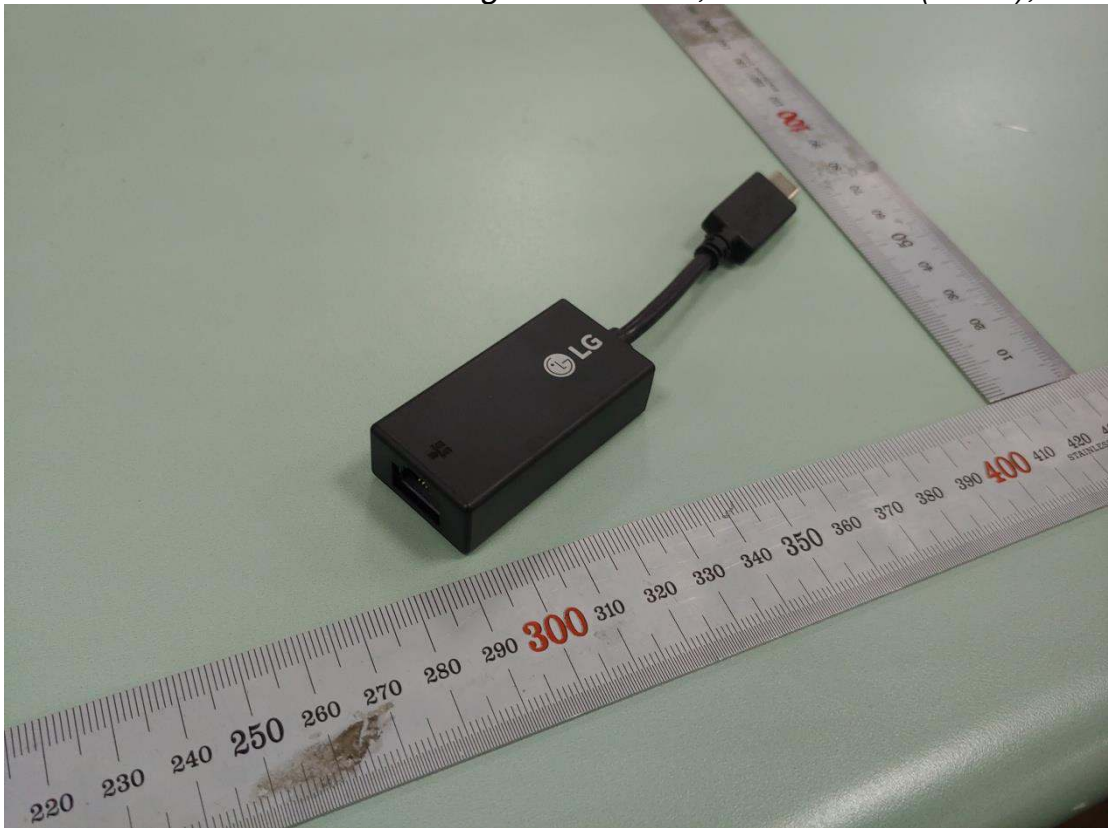


Figure 39
1000 Megabit Ethernet, LAN Gender View (White), Front View



*Figure 40
1000 Megabit Ethernet, LAN Gender (Black), Front View*



*Figure 41
1000 Megabit Ethernet, LAN Gender (Black), Back View*

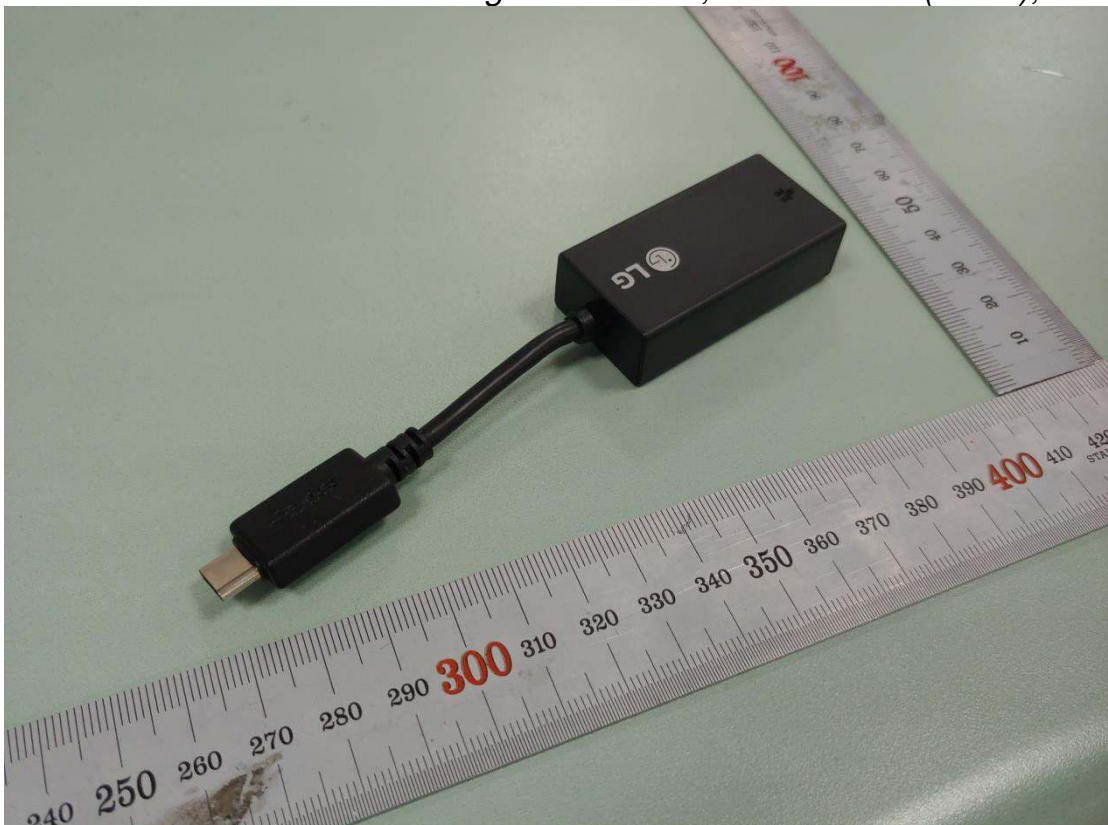


Figure 42
AC Adapter (White), Front View



Figure 43
AC Adapter (White), Back View



Figure 44
AC Adapter (White), AC Inlet View



Figure 45
AC Adapter, Label View



Figure 46
AC Adapter (Black), Front View



Figure 47
AC Adapter (Black), Back View



Figure 48
AC Adapter (Black), AC Inlet View



Figure 49
AC Adapter, Label View

