

EUT Internal Photos

Figure 7
Internal View



Figure 8
Internal View (Removed Cover)



Figure 9
Internal View (Removed Component)

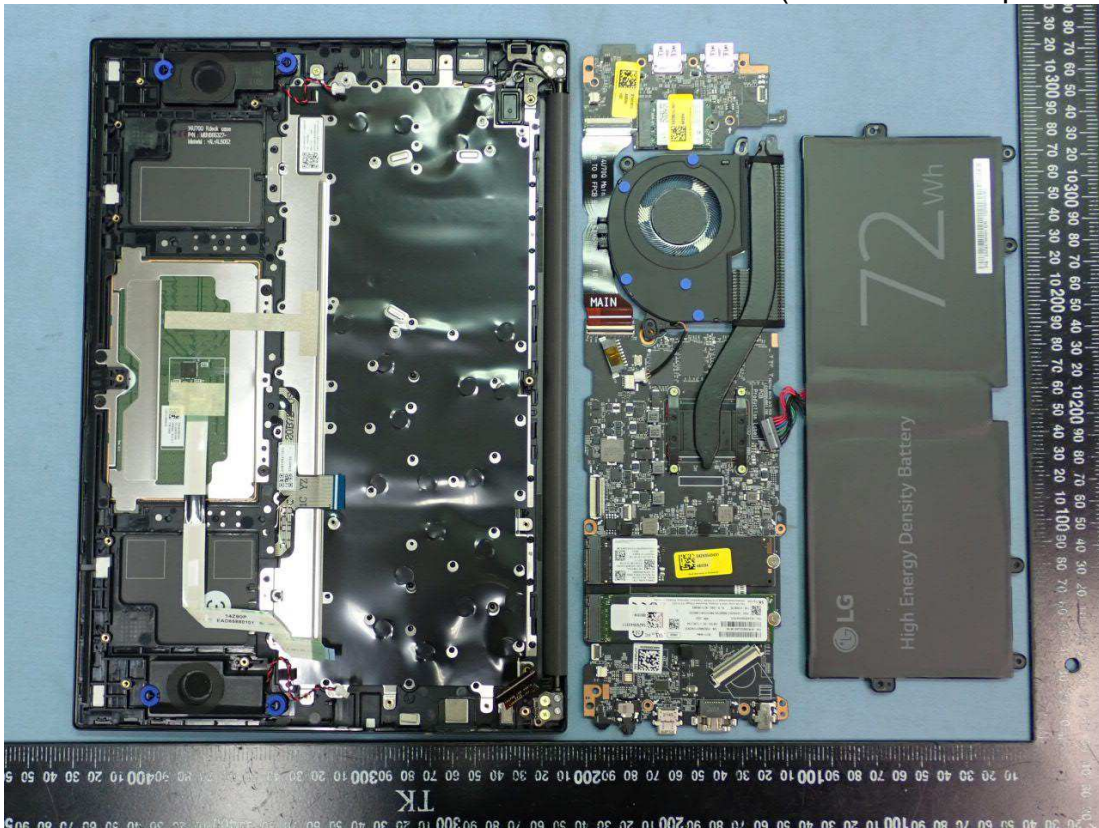


Figure 10
Internal View

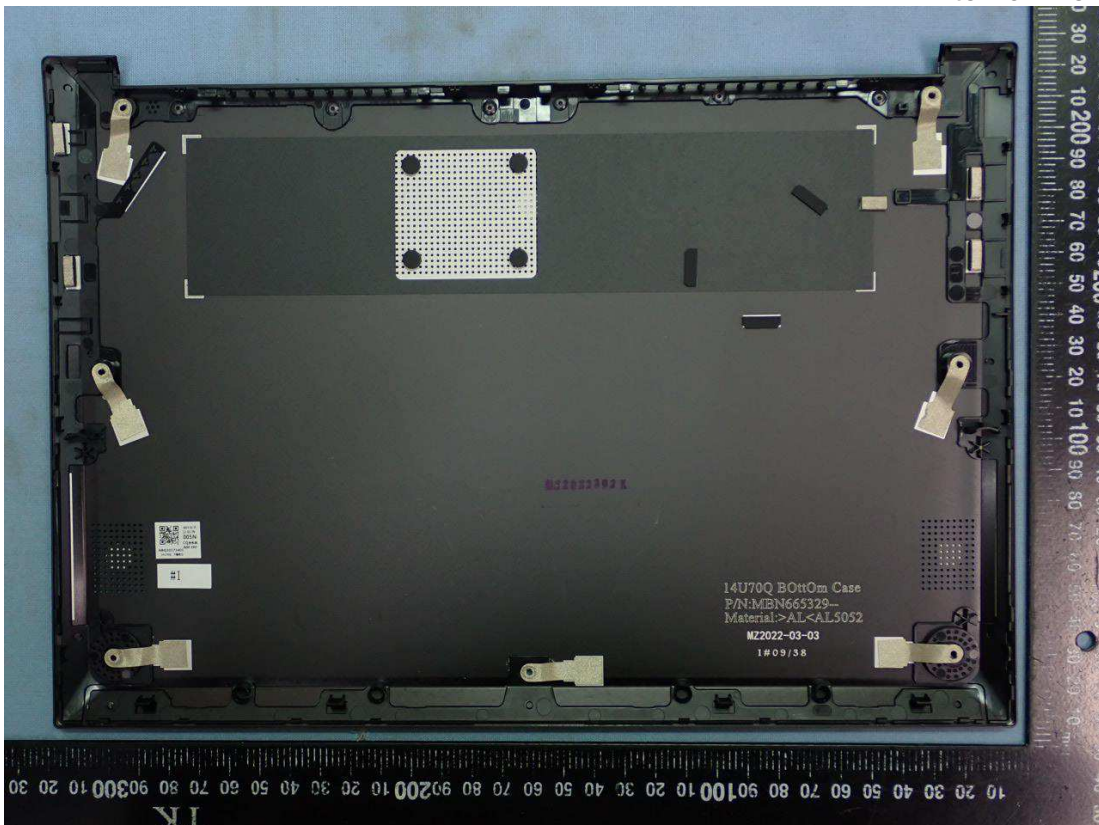


Figure 13
Battery Pack, Label View



Figure 14
Battery Pack, Label View



Figure 15
Internal View (Fan)

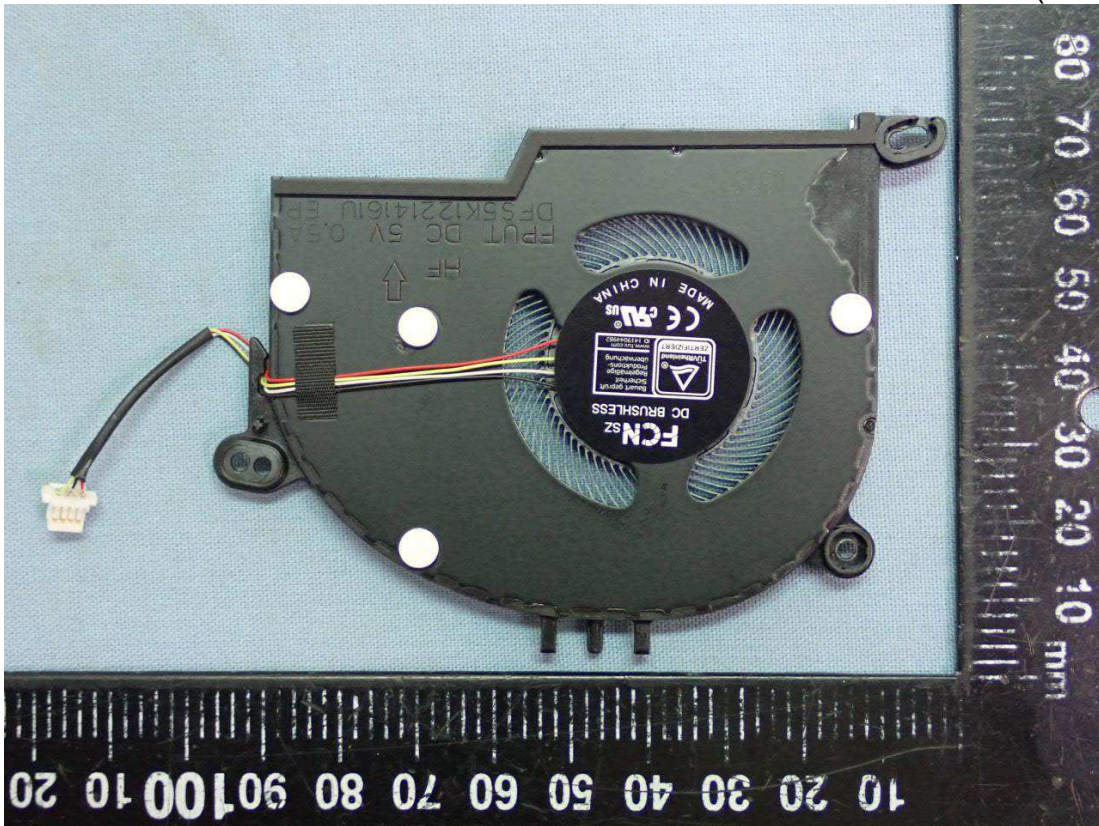


Figure 16
Internal View

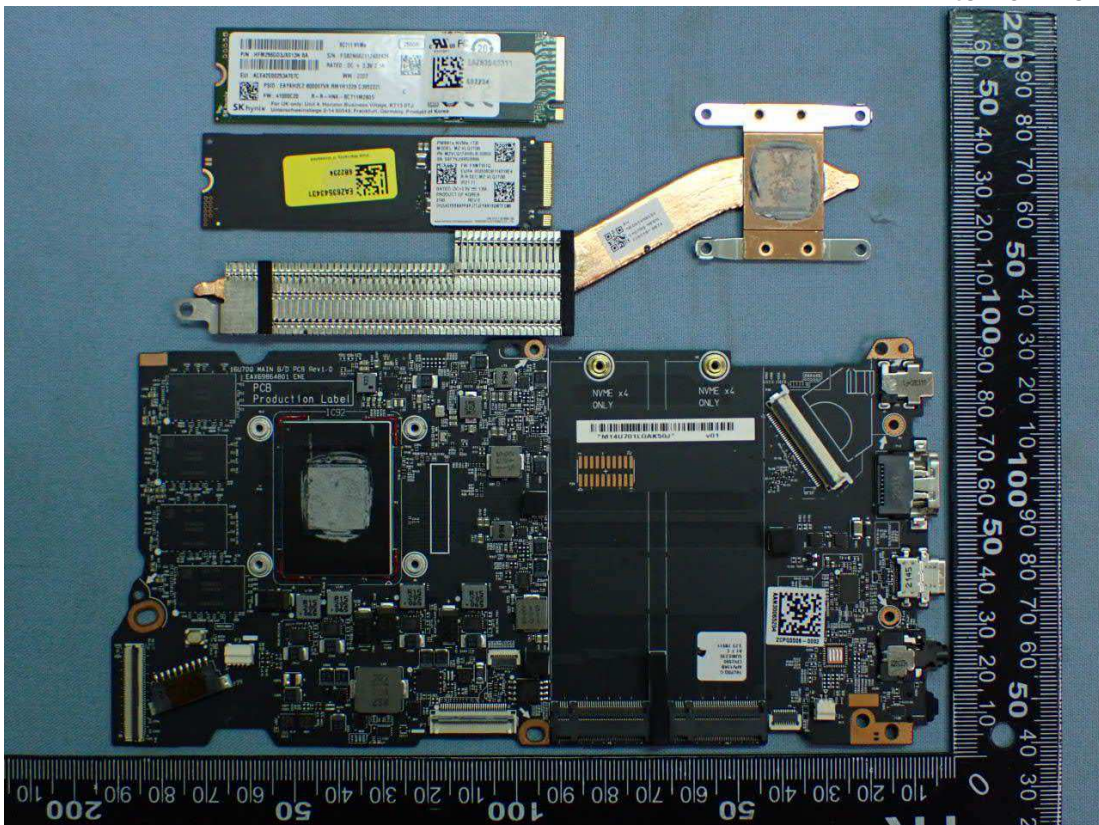


Figure 17
Main Board, Front View

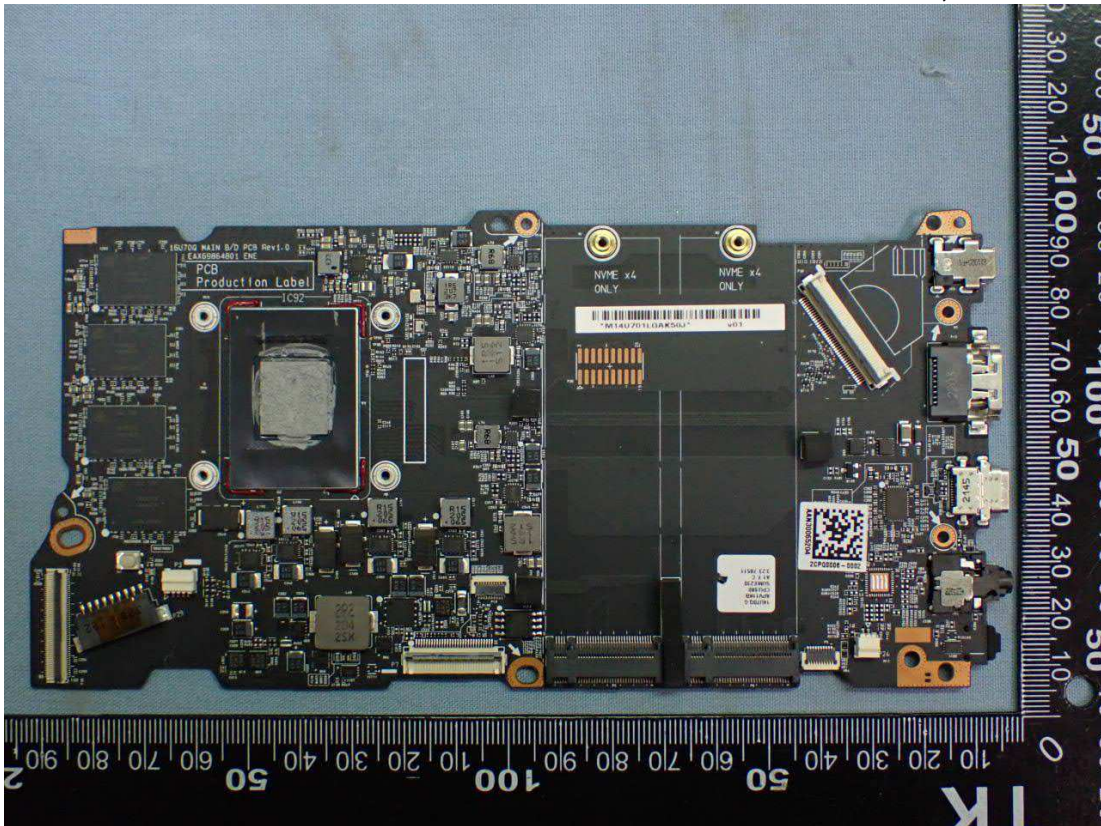


Figure 18
Main Board, Back View

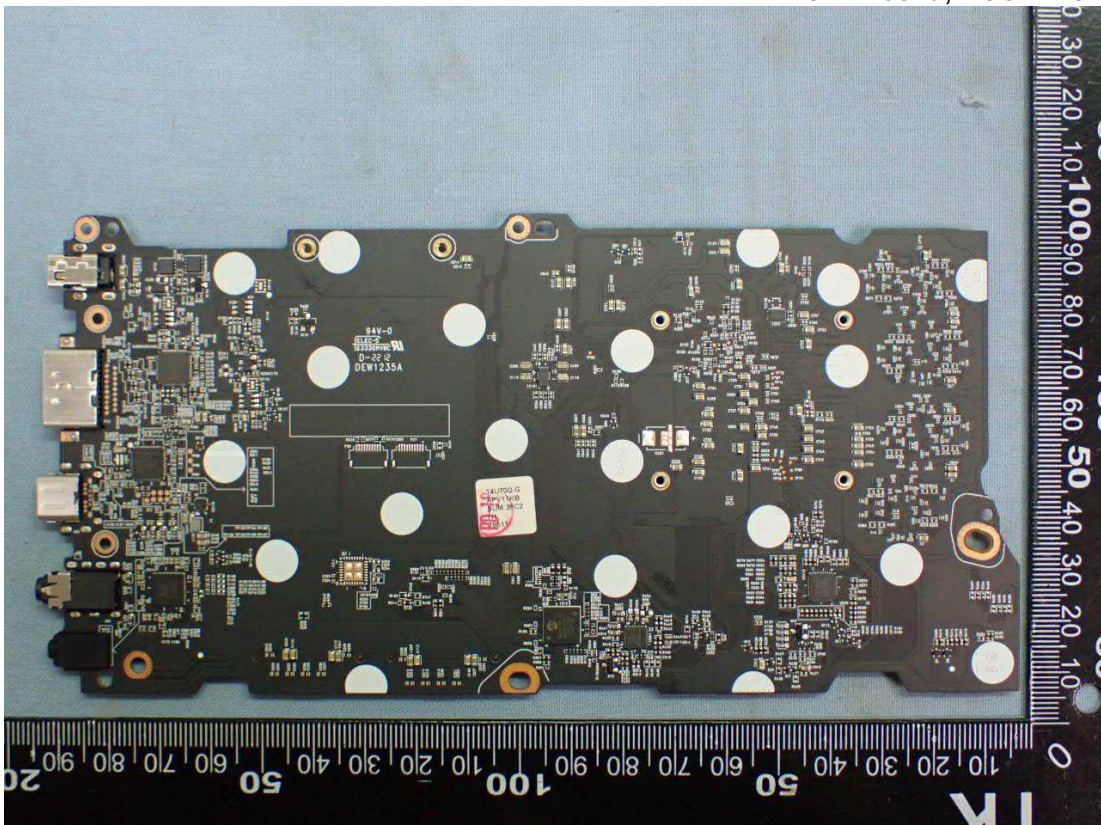


Figure 19
Internal View (WLAN SUB Bard, WLAN Combo CARD)

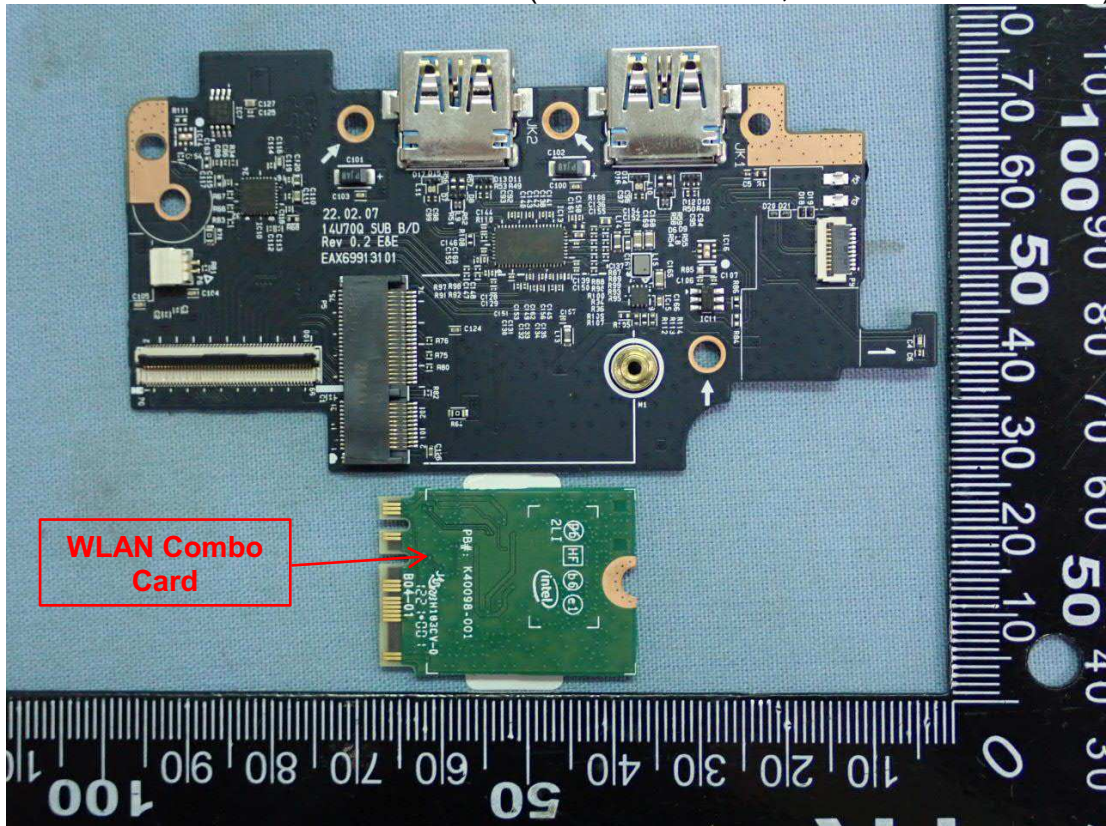


Figure 20
Internal View (WLAN SUB Bard, WLAN Combo CARD, Finger Printer)

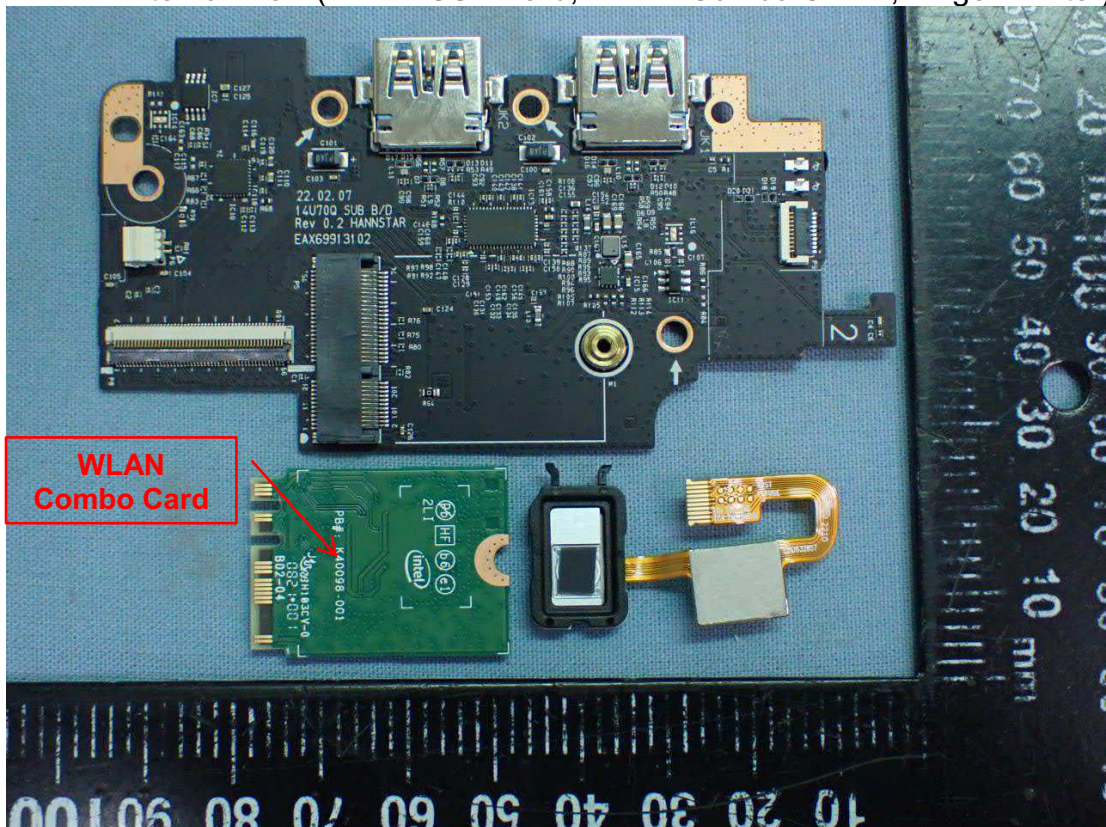


Figure 21
SUB Board, Front View

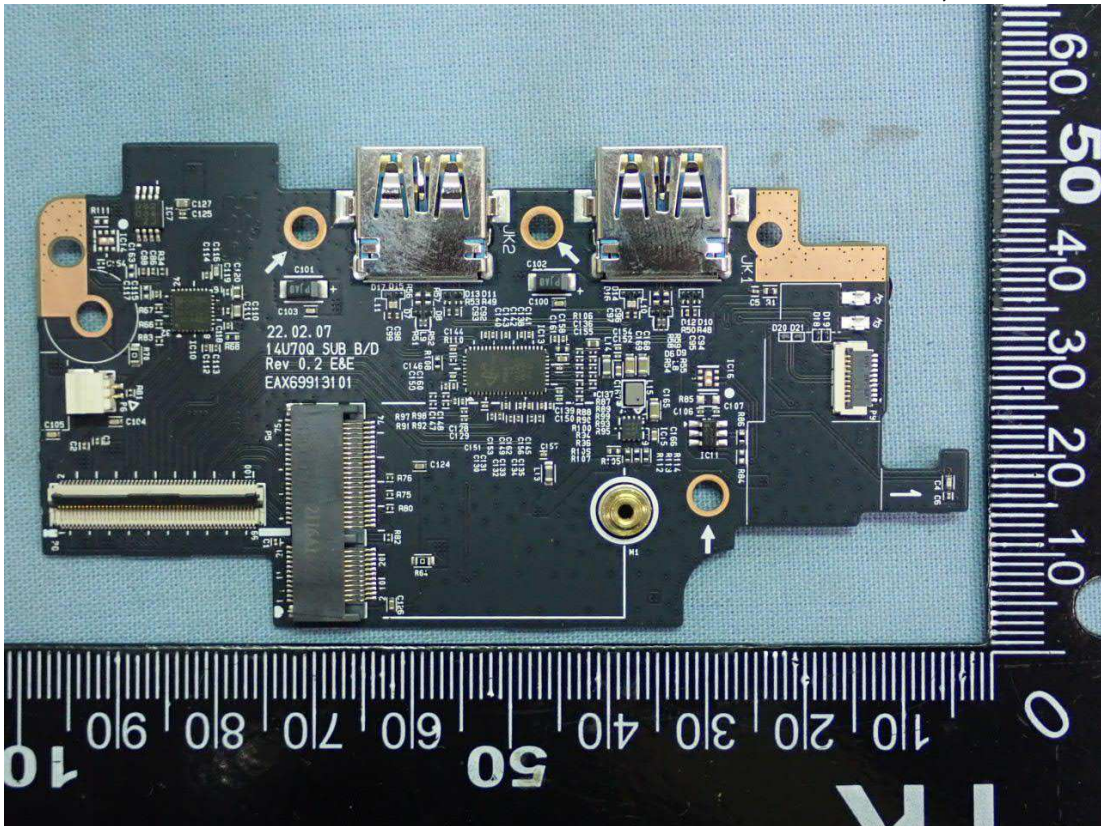


Figure 22
SUB Board, Back View

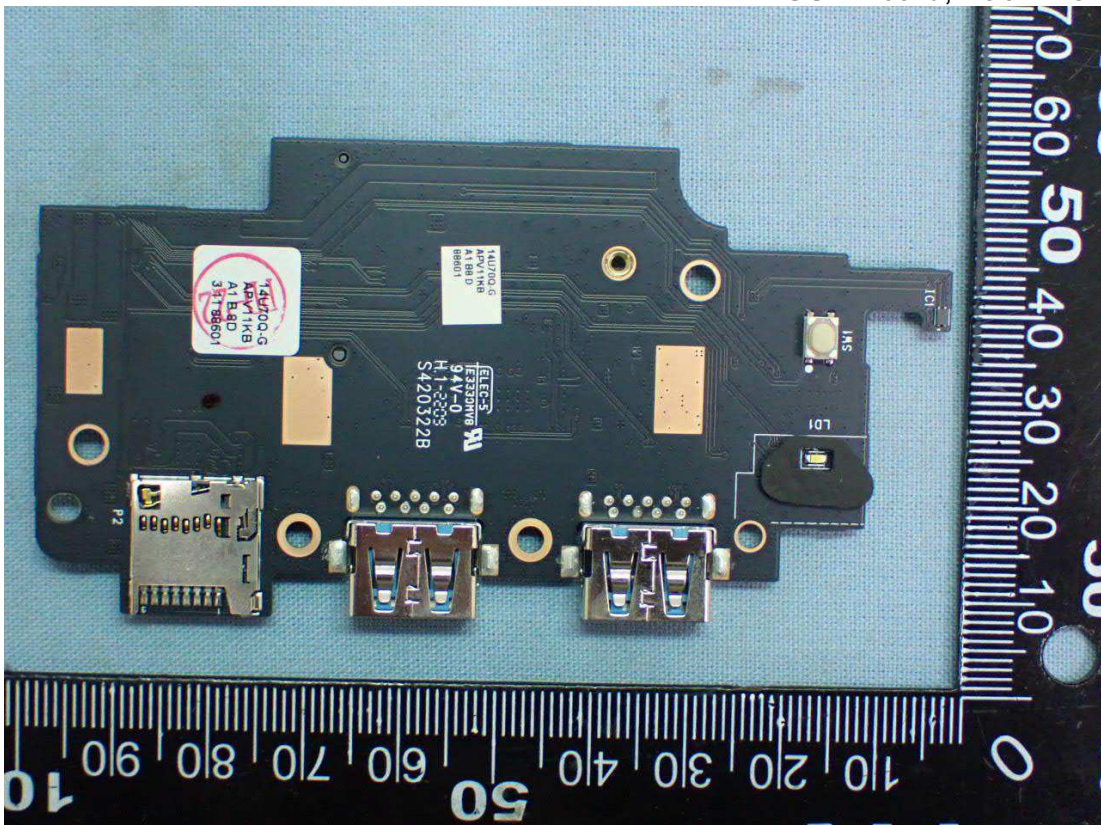


Figure 23
WLAN Combo Card, Front View



Figure 24
WLAN Combo Card, Front View/Removed Shielded Case

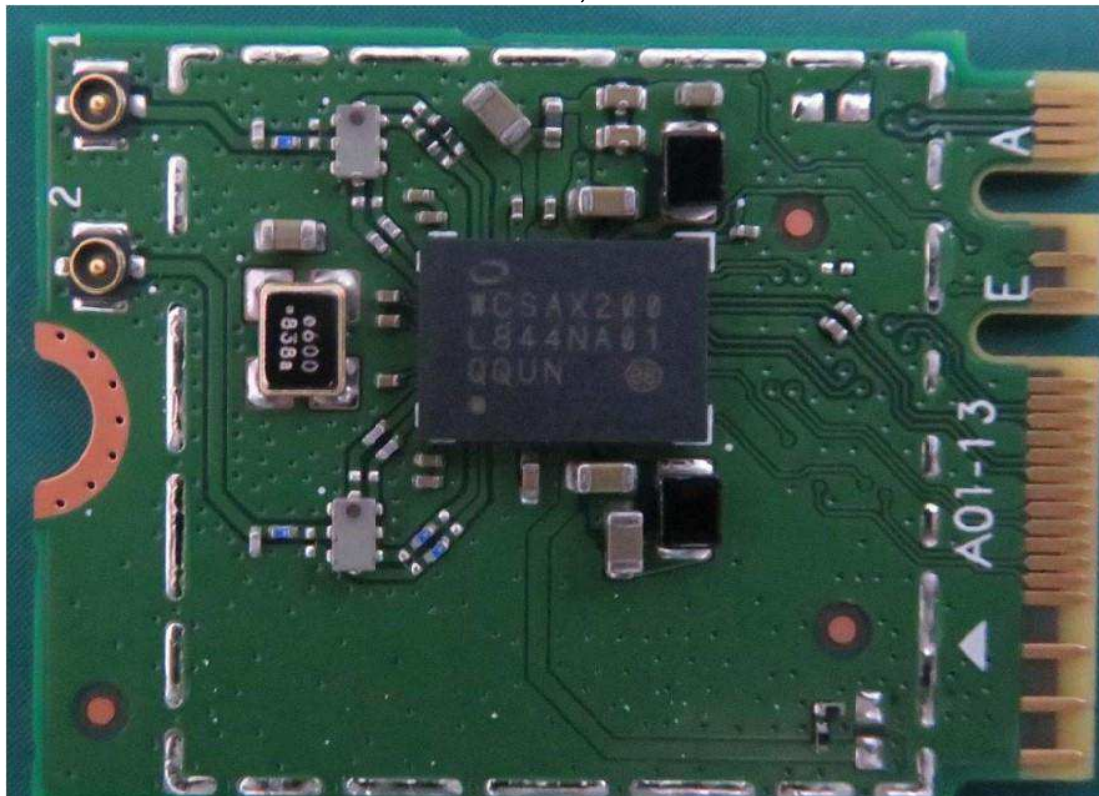


Figure 25
WLAN Combo Card, Back View

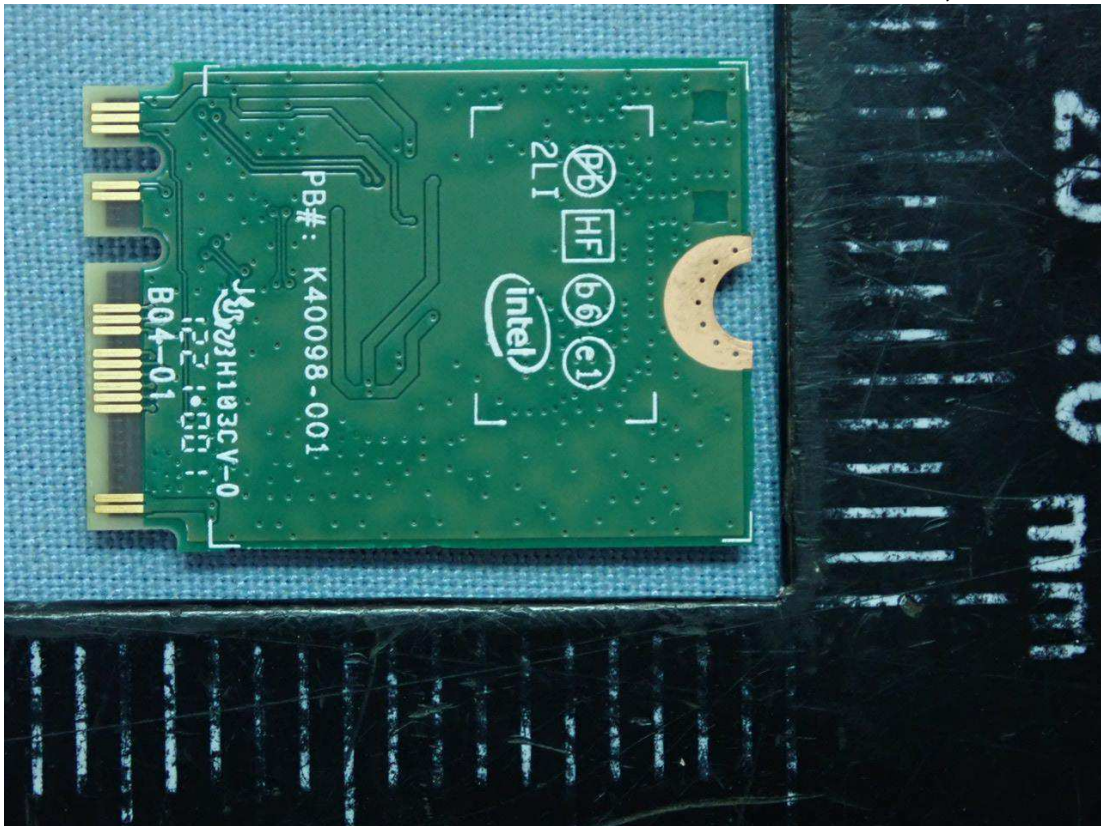


Figure 26
WLAN Combo Card, Front View

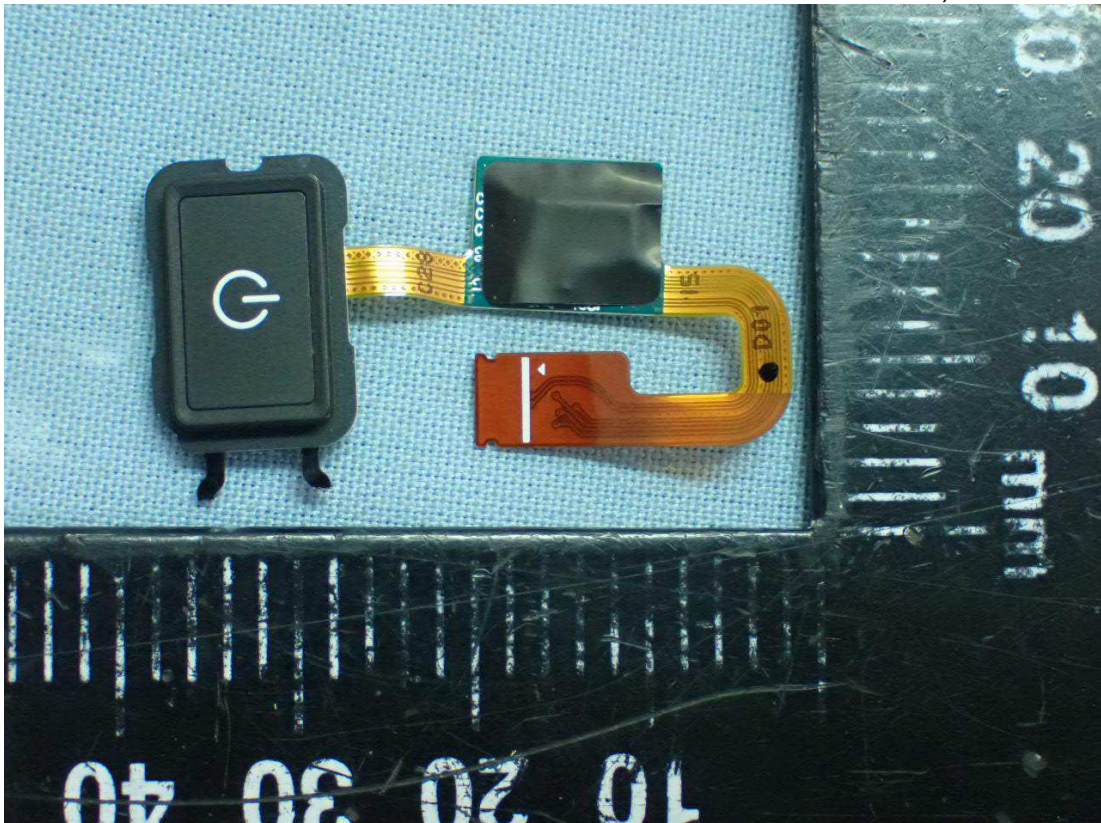


Figure 27
WLAN Combo Card, Back View

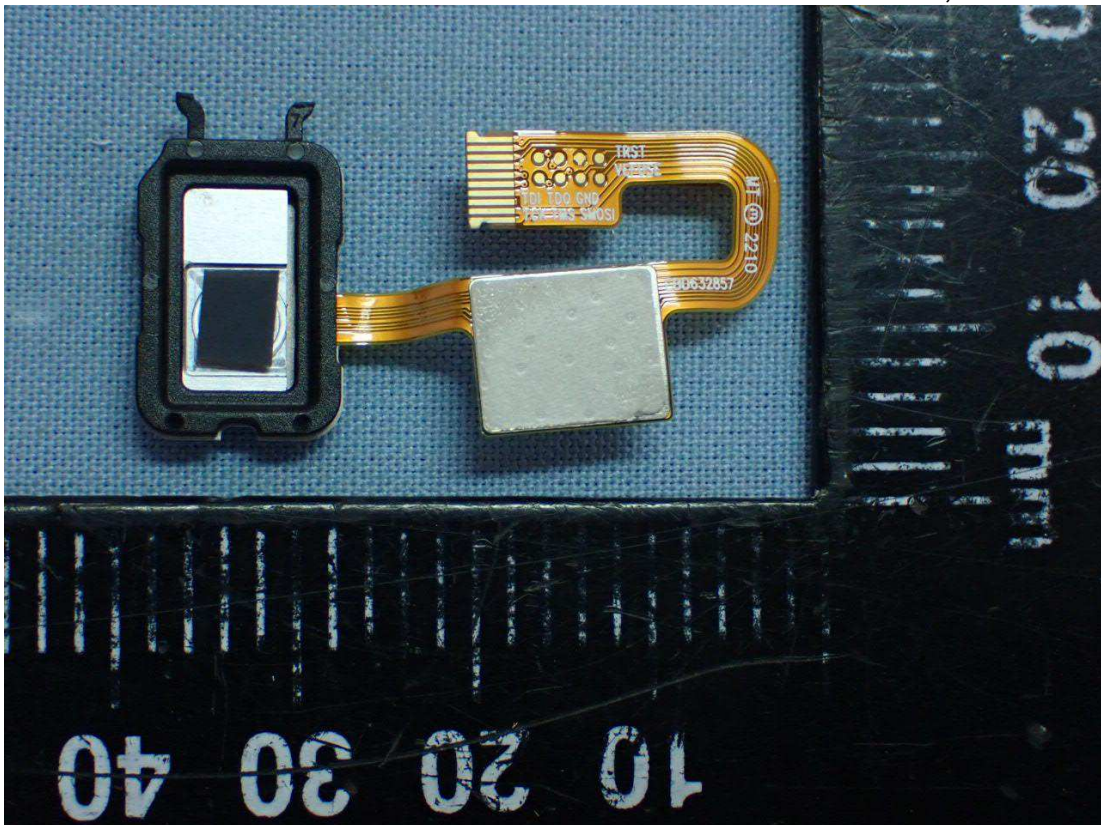


Figure 28
Internal View (Antenna Location)

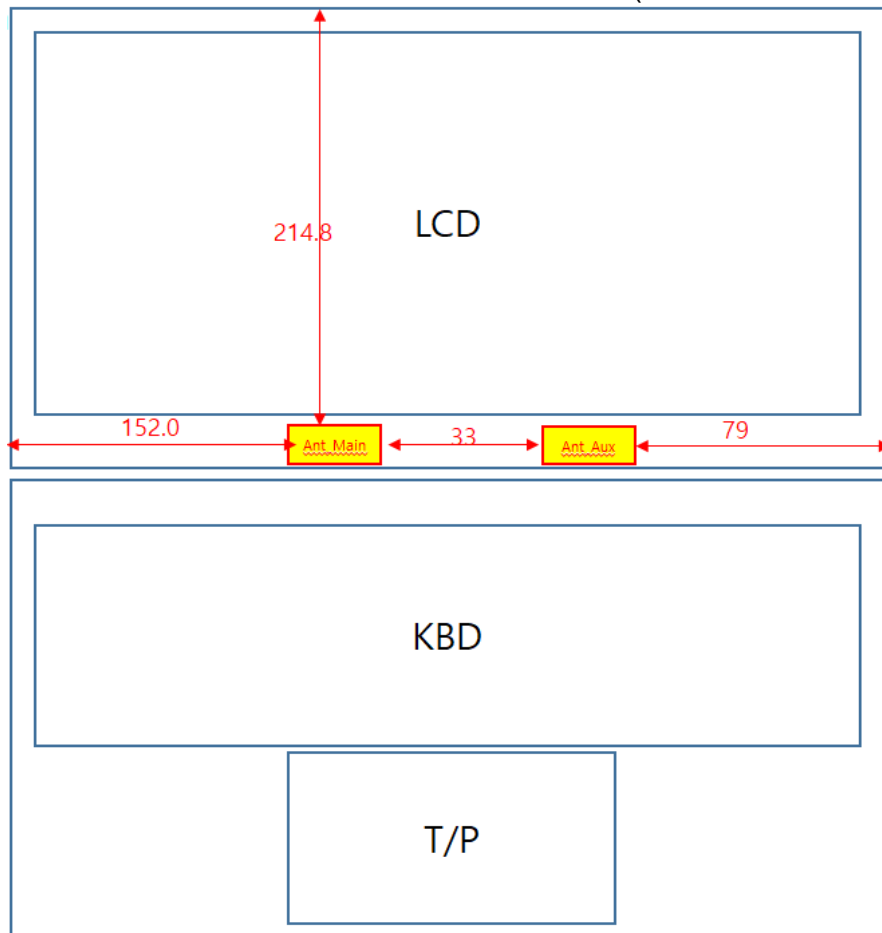


Figure 29
Antenna View, Front View



Figure 30
Antenna View, Back View

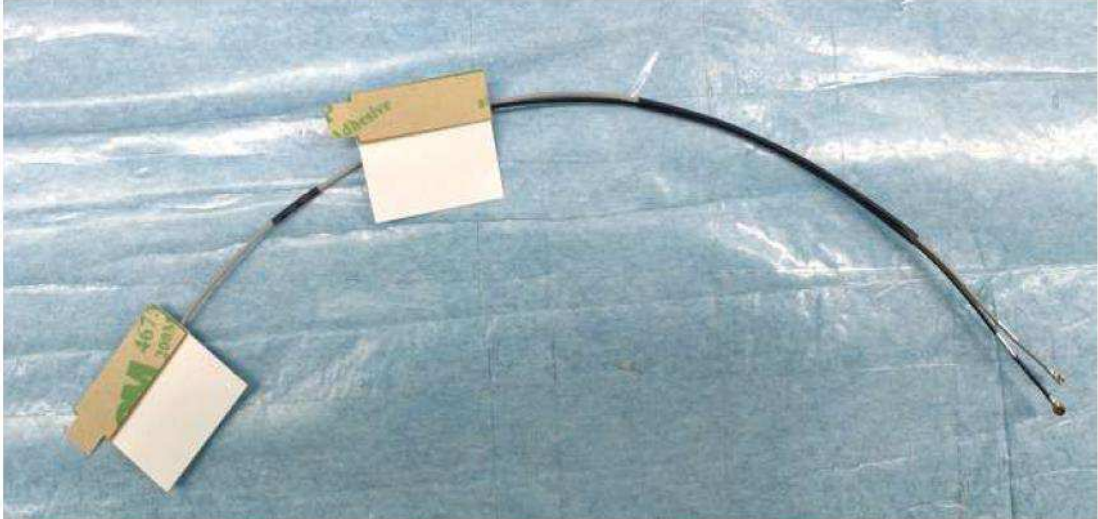


Figure 31
SAMSUNG 1TB SSD



Figure 32
SK hynix 256GB SSD

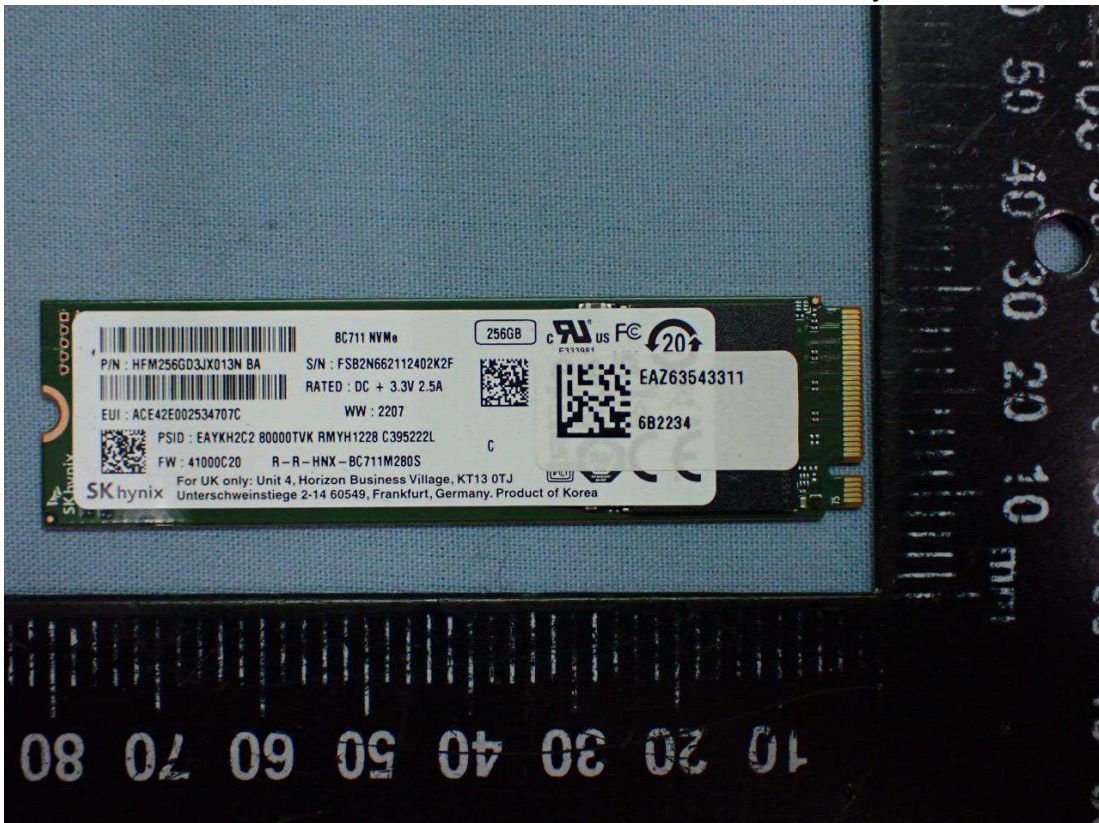


Figure 33
SK hynix 512GB SSD, Back View

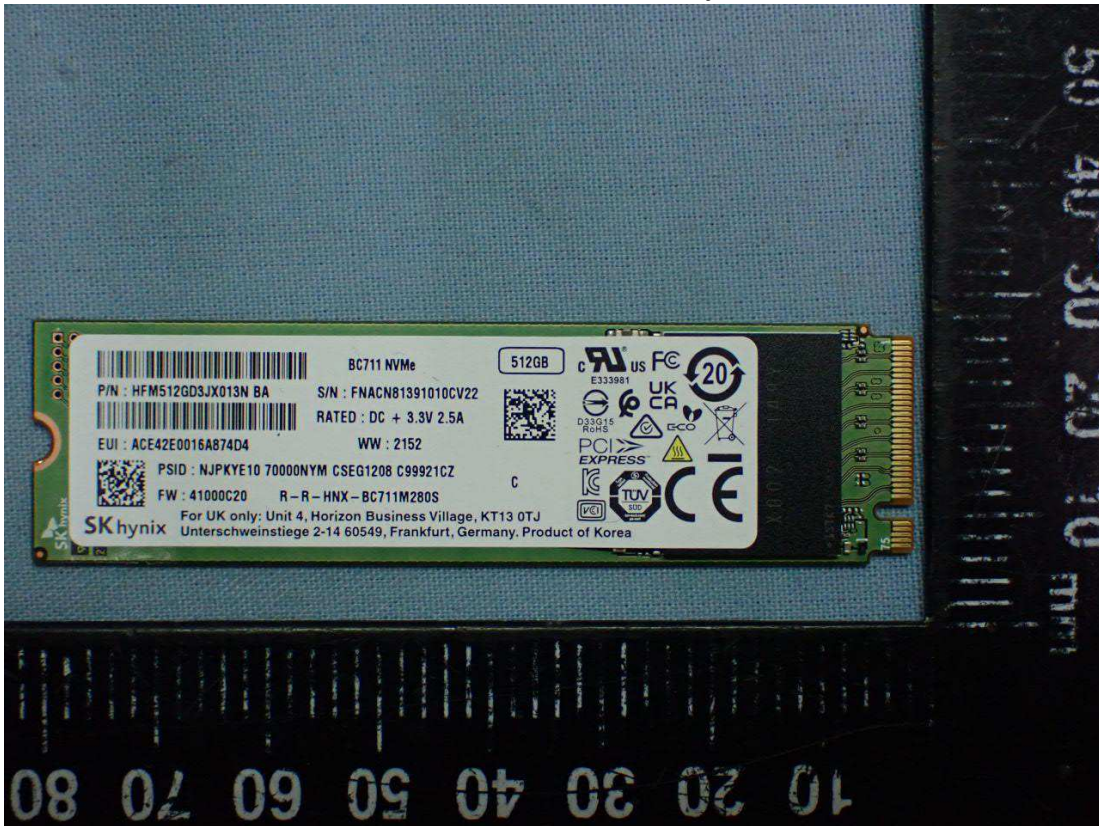


Figure 34
SAMSUNG 256GB SSD, Front View



Figure 35
NV140WUM-N44, LCD Panel, Front View



Figure 36
NV140WUM-N44, LCD Panel, Back View



Figure 37
DS-65AI-19-3 19065E BP, AC Adapter, Front View

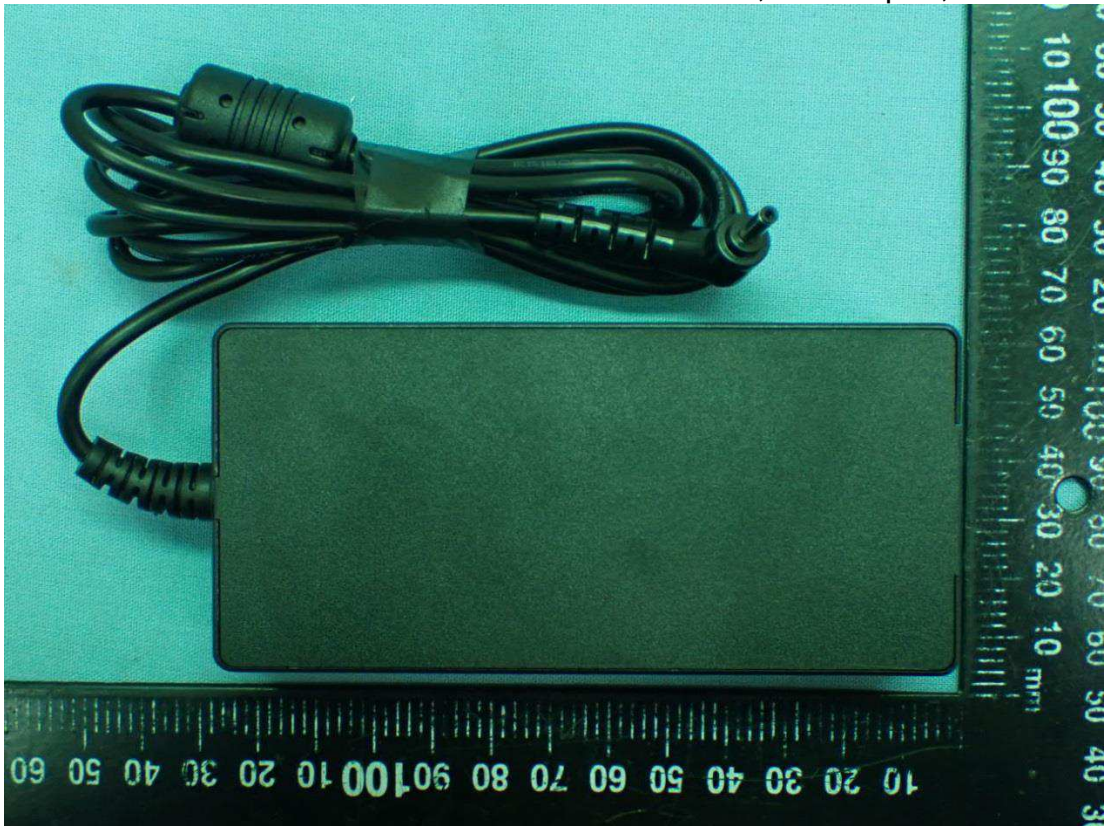


Figure 38
DS-65AI-19-3 19065E BP, AC Adapter, Back View

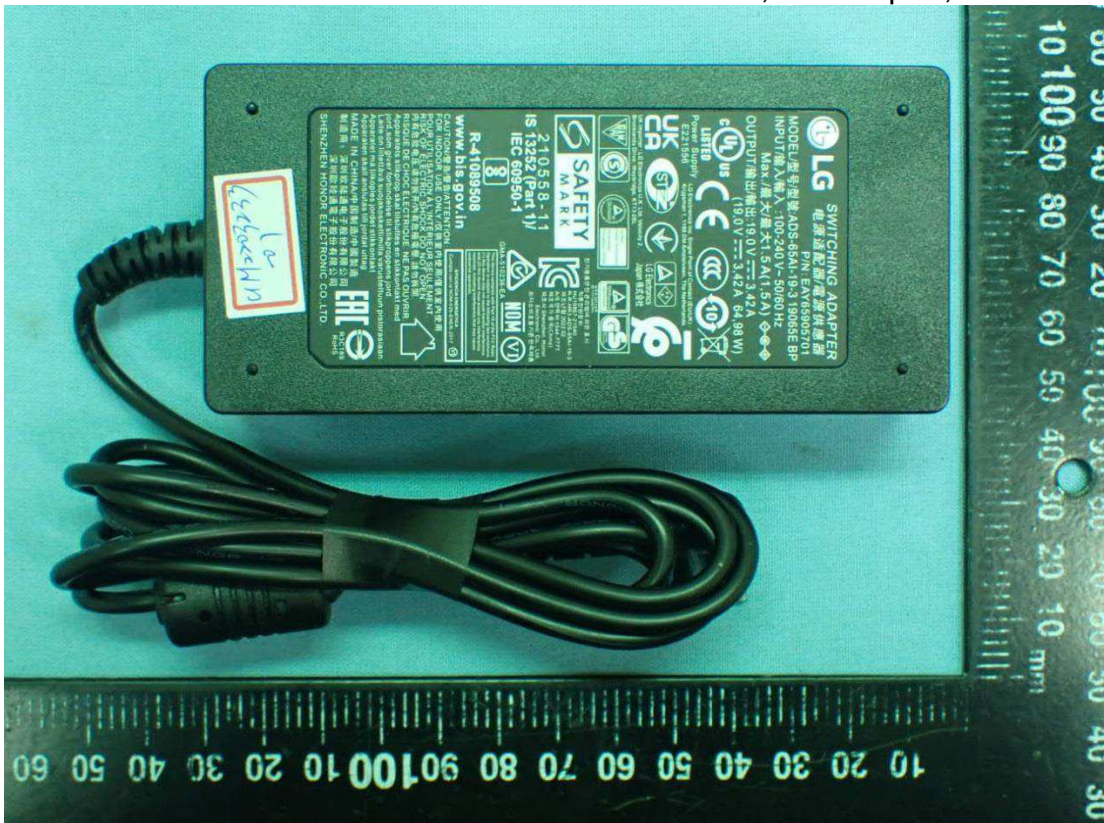


Figure 41
DA-65G19, AC Adapter, Front View and Side View

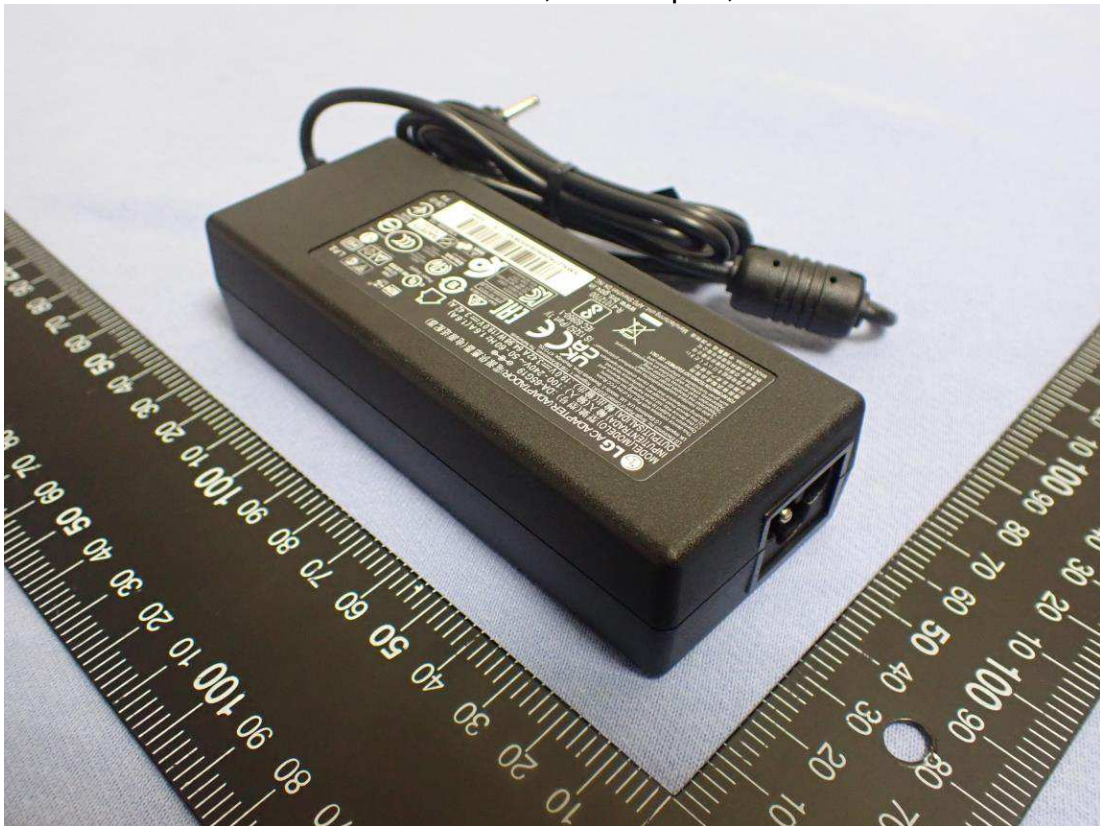


Figure 42
DA-65G19, AC Adapter, Back View and Side View



Figure 43
DA-65G19, AC Adapter, AC Inlet View



Figure 44
DA-65G19, AC Adapter, Label View



Figure 45
(Option) 100 Megabit Ethernet, LAN Gender View (White), Front View

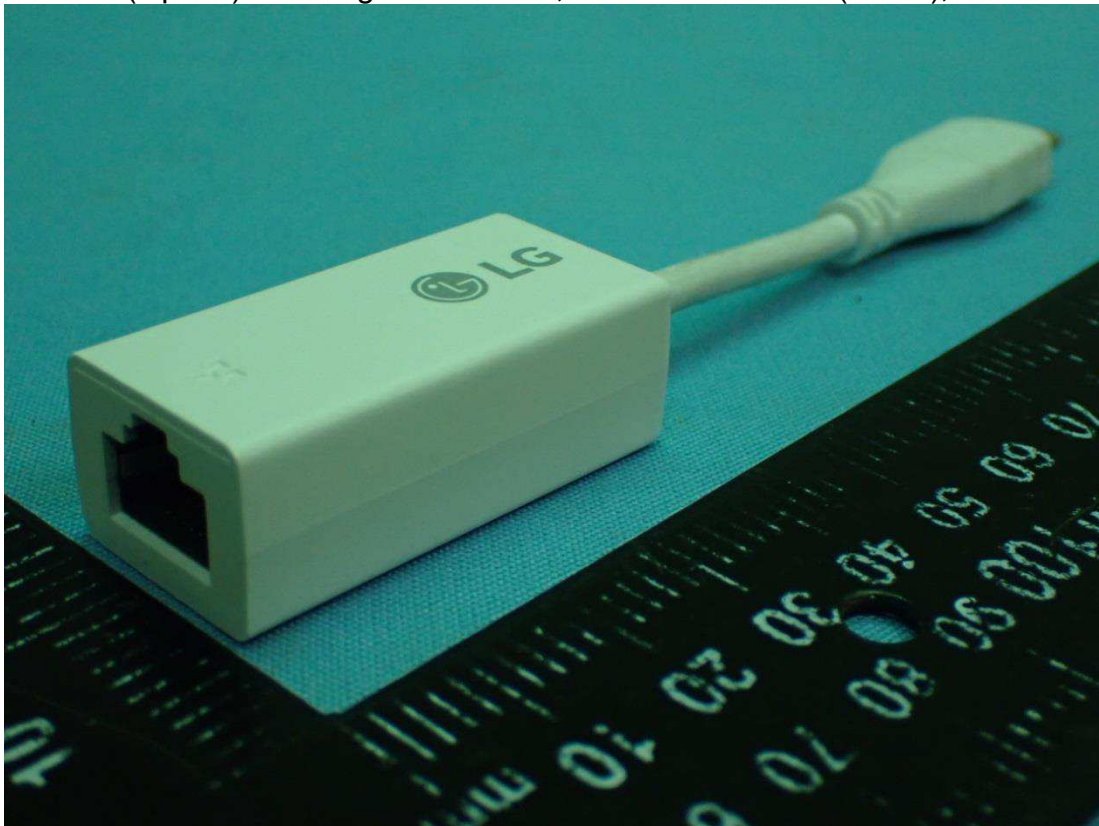


Figure 46
(Option) 100 Megabit Ethernet, LAN Gender View (White), Front View

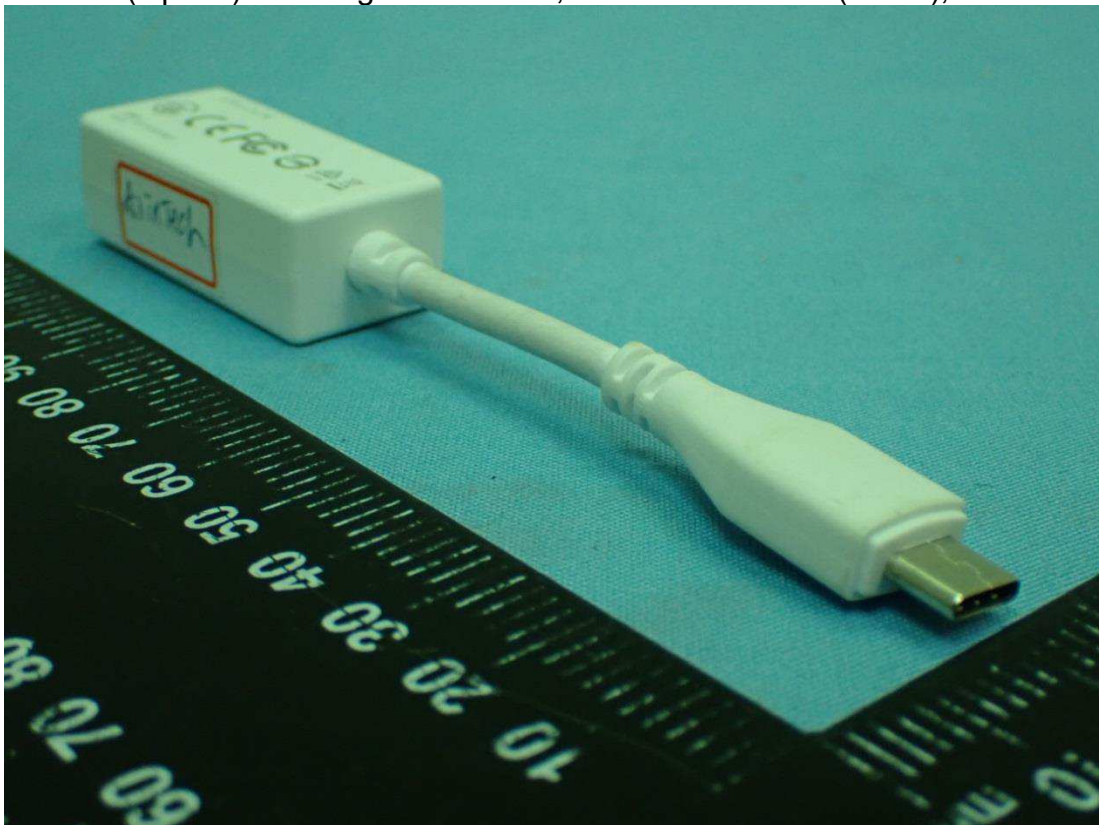


Figure 47
(Option) 100 Megabit Ethernet, LAN Gender (Black), Front View

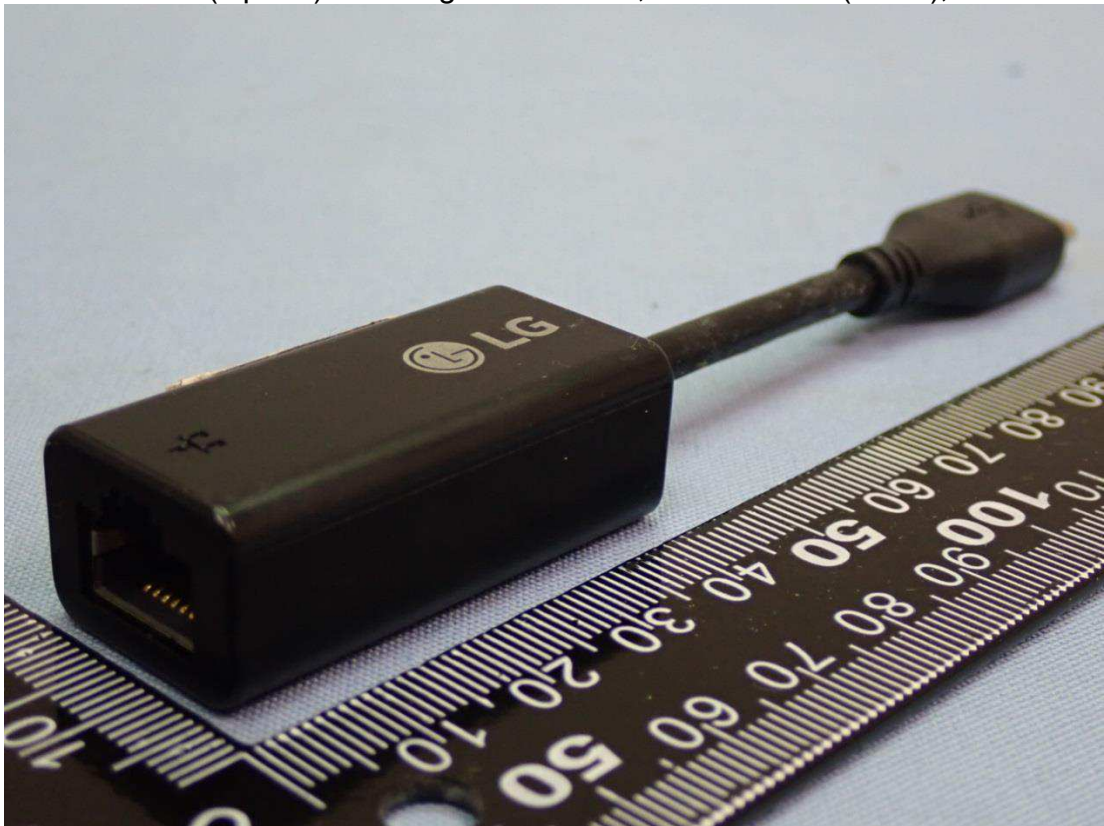


Figure 48
(Option) 100 Megabit Ethernet, LAN Gender (Black), Back View

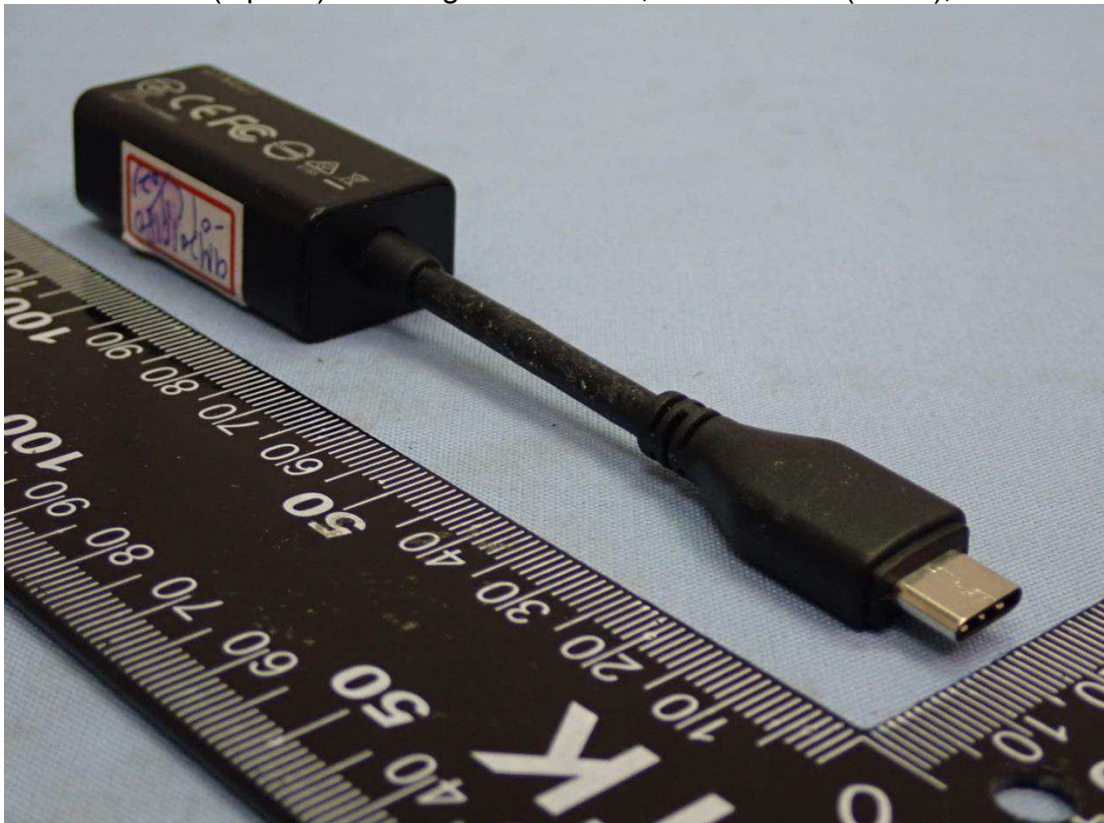


Figure 49
(Option) 1000 Megabit Ethernet, LAN Gender View (White), Front View



Figure 50
(Option) 1000 Megabit Ethernet, LAN Gender View (White), Front View

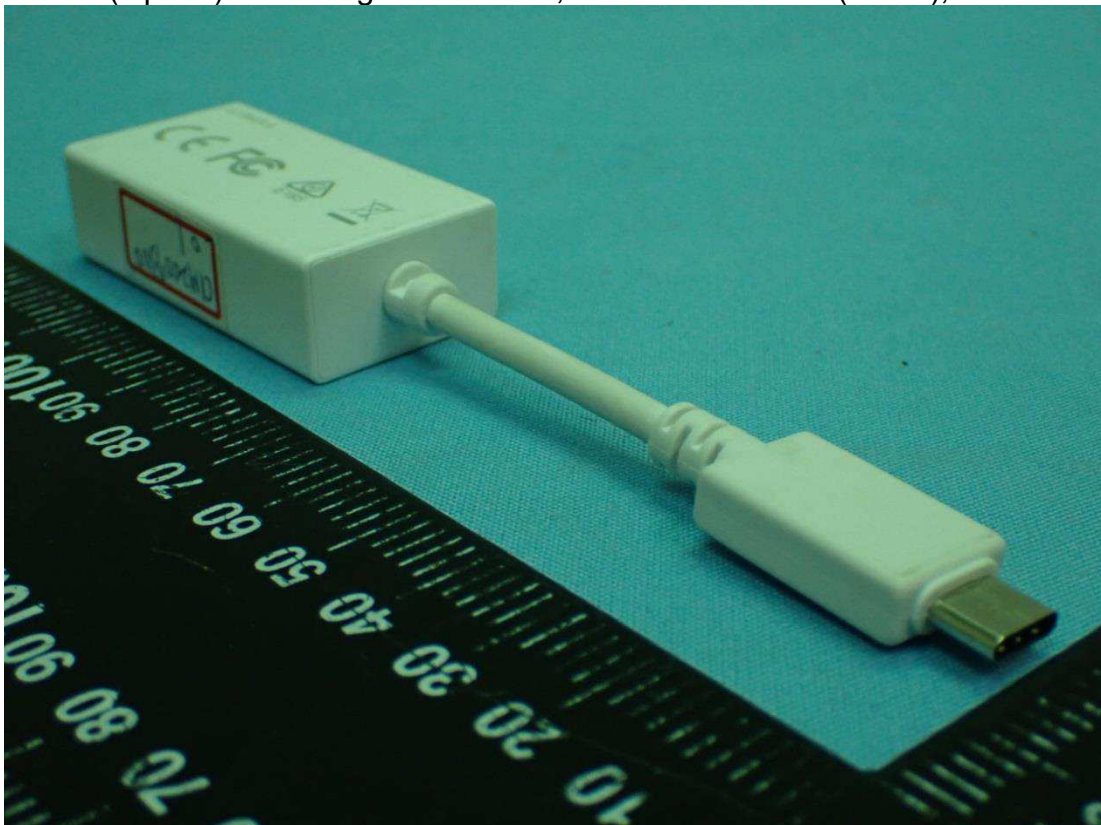


Figure 51
(Option) 1000 Megabit Ethernet, LAN Gender (Black), Front View

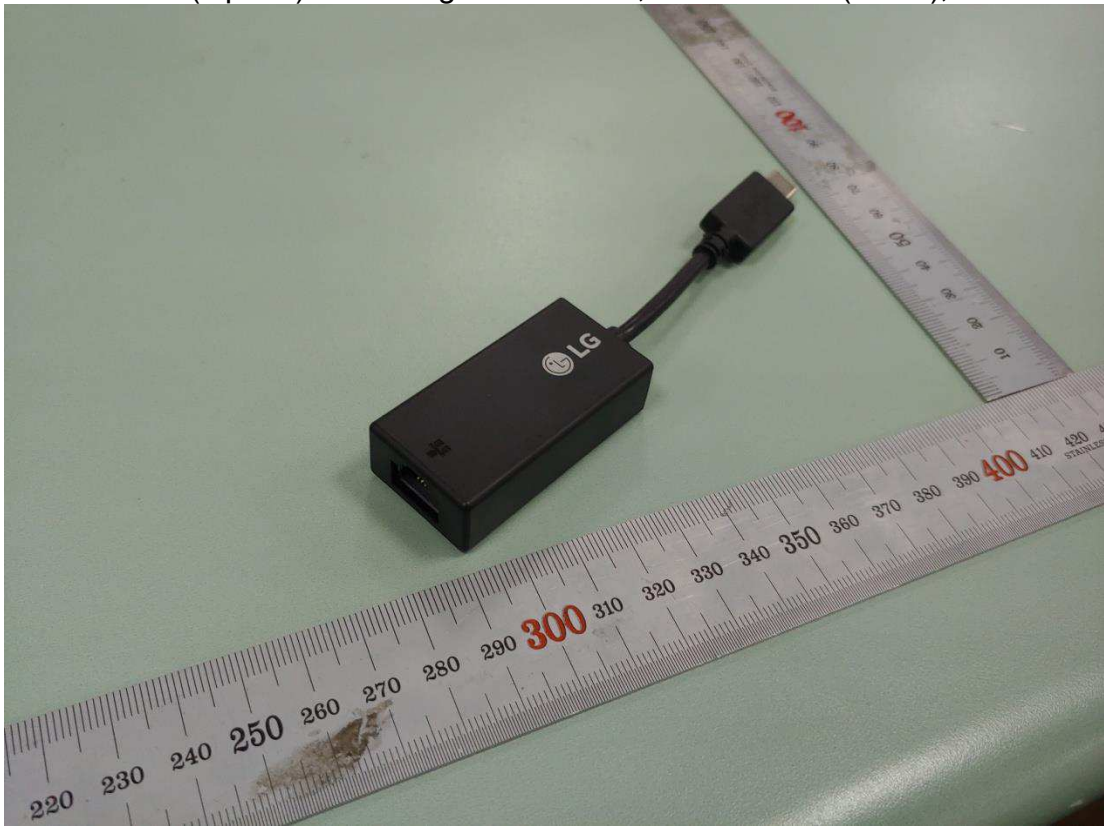


Figure 52
(Option) 1000 Megabit Ethernet, LAN Gender (Black), Back View

