

LG Electronics FCC: BEJLX5450 -- 835MHz. Head SAR w/ Centurion Antenna

SAM Phantom; Right Hand Section; Probe:ET3DV6 - SN1677; ConvF(6.70,6.70,6.70)

Med. Parameters 835 MHz Brain: $\sigma = 0.93$ mho/m $\epsilon_r = 42.0$ $\rho = 1.00$ g/cm³; Antenna Position -- Out; Crest Factor 1.0

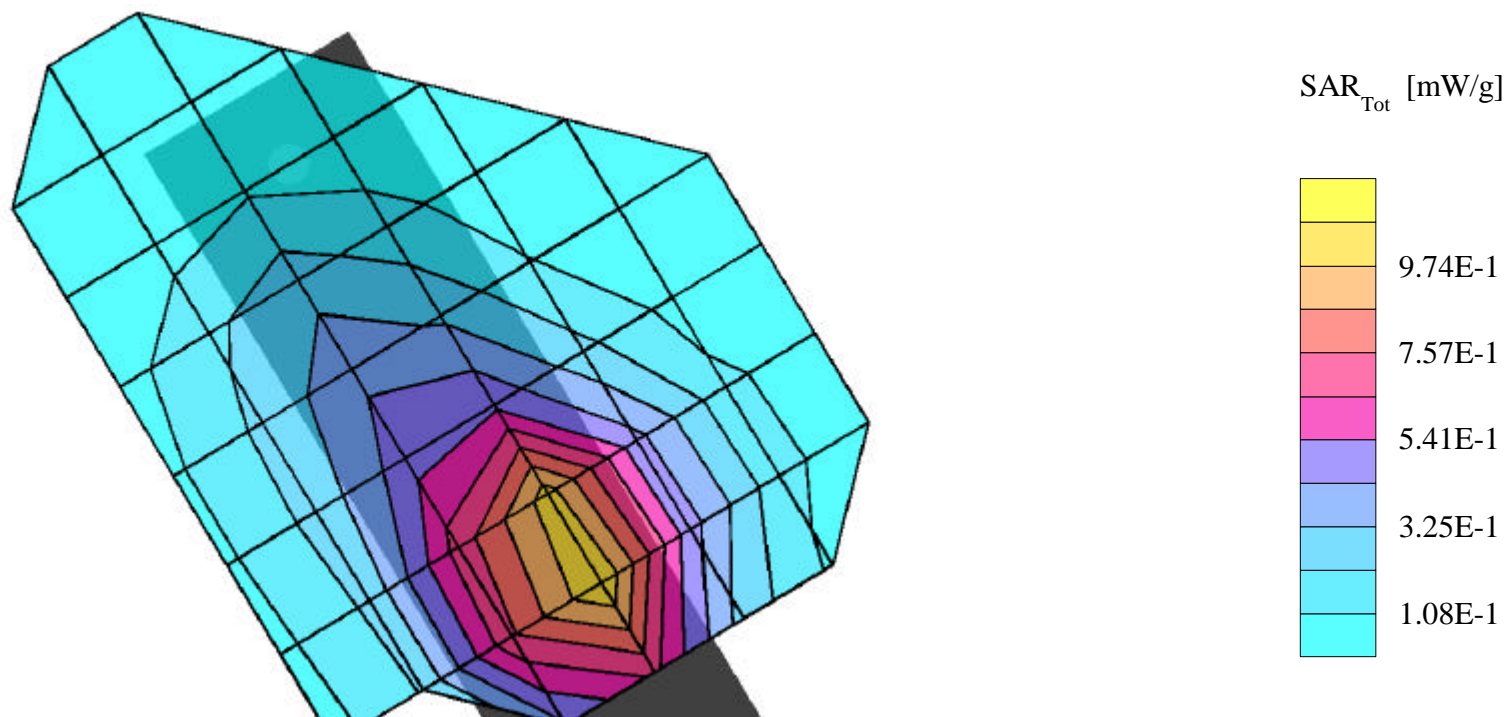
SAR (1g): 1.11 mW/g, SAR (10g): 0.744 mW/g

LGE TriMode Phone Model: LG-LX5450 with Centurion antenna

AMPS Mode, Ch.0991 [824.04MHz]; Standard Battery; Ambient Temp. = 20.4°C / Meas. Tissue Temp. = 19.1°C

Conducted Power = 26.0dBm; Right Head Phantom, Cheek/Touch position: Flip = open

Test Date --11/20/2002 [FCC/OET Bulletin 65 - Supplement C, July 2001]



LG Electronics FCC: BEJLX5450 -- 835MHz. Head SAR w/ Centurion Antenna

SAM Phantom; Right Hand Section; Probe:ET3DV6 - SN1677; ConvF(6.70,6.70,6.70)

Med. Parameters 835 MHz Brain: $\sigma = 0.93$ mho/m $\epsilon_r = 42.0$ $\rho = 1.00$ g/cm³; Antenna Position -- Out; Crest Factor 1.0

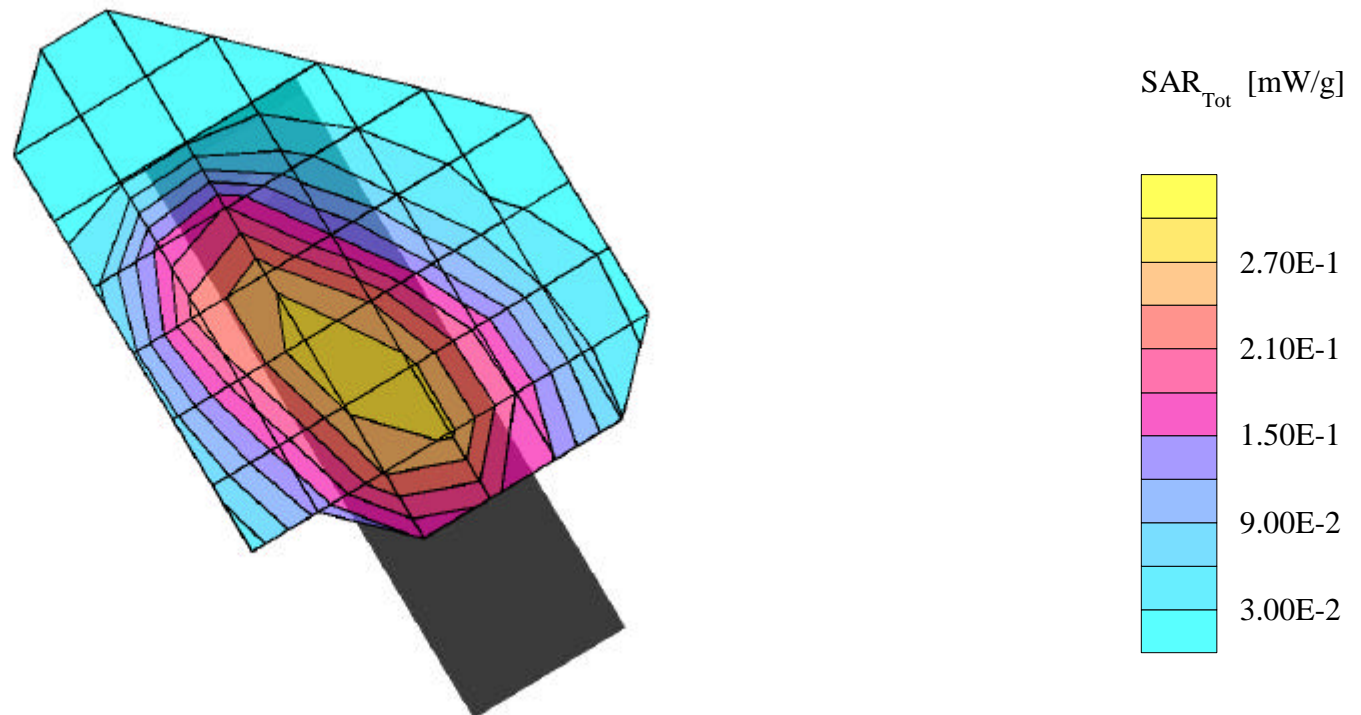
SAR (1g): 0.291 mW/g, SAR (10g): 0.219 mW/g

LGE TriMode Phone Model:LG-LX5450 with Centurion antenna

AMPS Mode, Ch.0991 [824.04MHz]; Standard Battery; Ambient Temp. = 20.4°C / Meas. Tissue Temp. = 19.1°C

Conducted Power = 26.0dBm; Right Head Phantom, Ear/15 degree Tilt position: Flip = open

Test Date --11/20/2002 [FCC/OET Bulletin 65 - Supplement C, July 2001]



LG Electronics FCC: BEJLX5450 -- 835MHz. Head SAR w/ Centurion Antenna

SAM Phantom; Left Hand Section; Probe:ET3DV6 - SN1677; ConvF(6.70,6.70,6.70)

Med. Parameters 835 MHz Brain: $\sigma = 0.93$ mho/m $\epsilon_r = 42.0$ $\rho = 1.00$ g/cm³; Antenna Position -- Out; Crest Factor 1.0

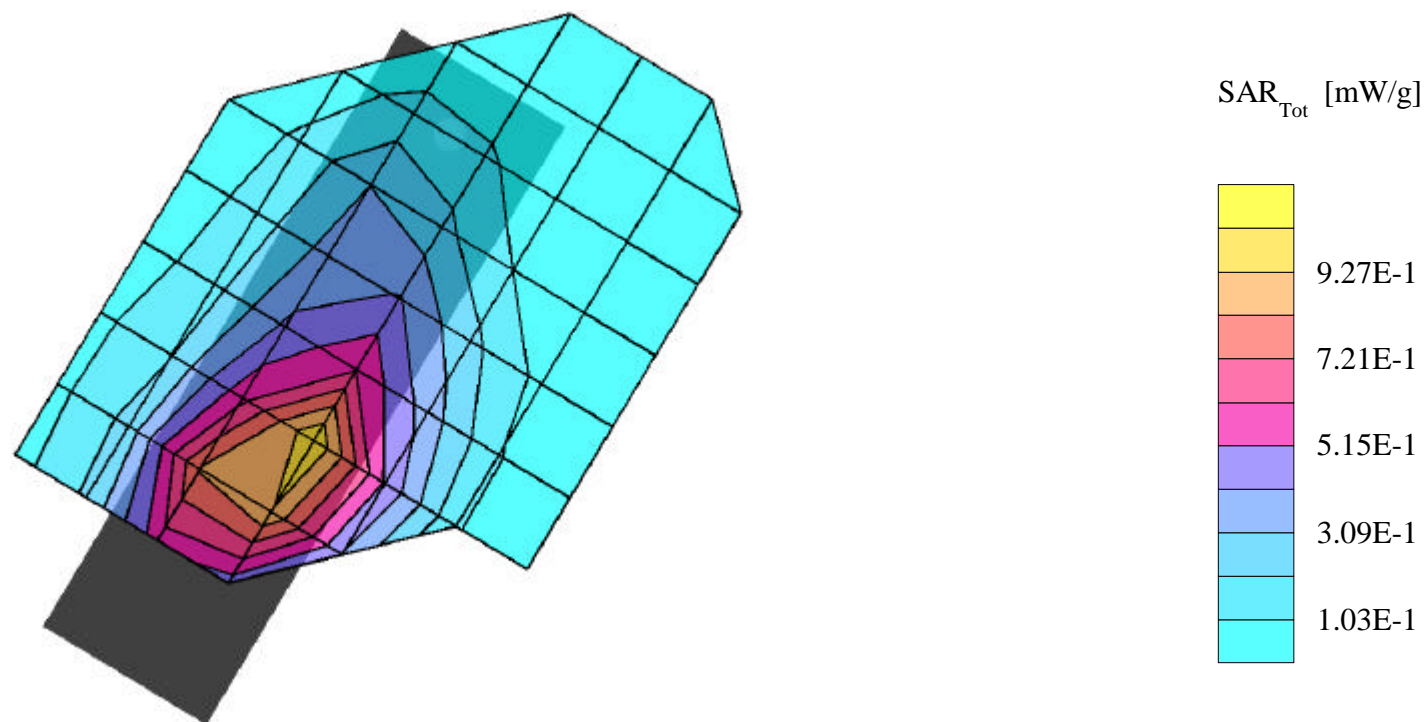
SAR (1g): 1.07 mW/g, SAR (10g): 0.707 mW/g

LGE TriMode Phone Model: LG-LX5450 with Centurion antenna

AMPS Mode, Ch.0991 [824.04MHz]; Standard Battery; Ambient Temp. = 20.4°C / Meas. Tissue Temp. = 19.1°C

Conducted Power = 26.0dBm; Left Head Phantom, Cheek/Touch position: Flip = open

Test Date --11/20/2002 [FCC/OET Bulletin 65 - Supplement C, July 2001]



LG Electronics FCC: BEJLX5450 -- 835MHz. Head SAR w/ Centurion Antenna

SAM Phantom; Left Hand Section; Probe:ET3DV6 - SN1677; ConvF(6.70,6.70,6.70)

Med. Parameters 835 MHz Brain: $\sigma = 0.93$ mho/m $\epsilon_r = 42.0$ $\rho = 1.00$ g/cm³; Antenna Position -- Out; Crest Factor 1.0

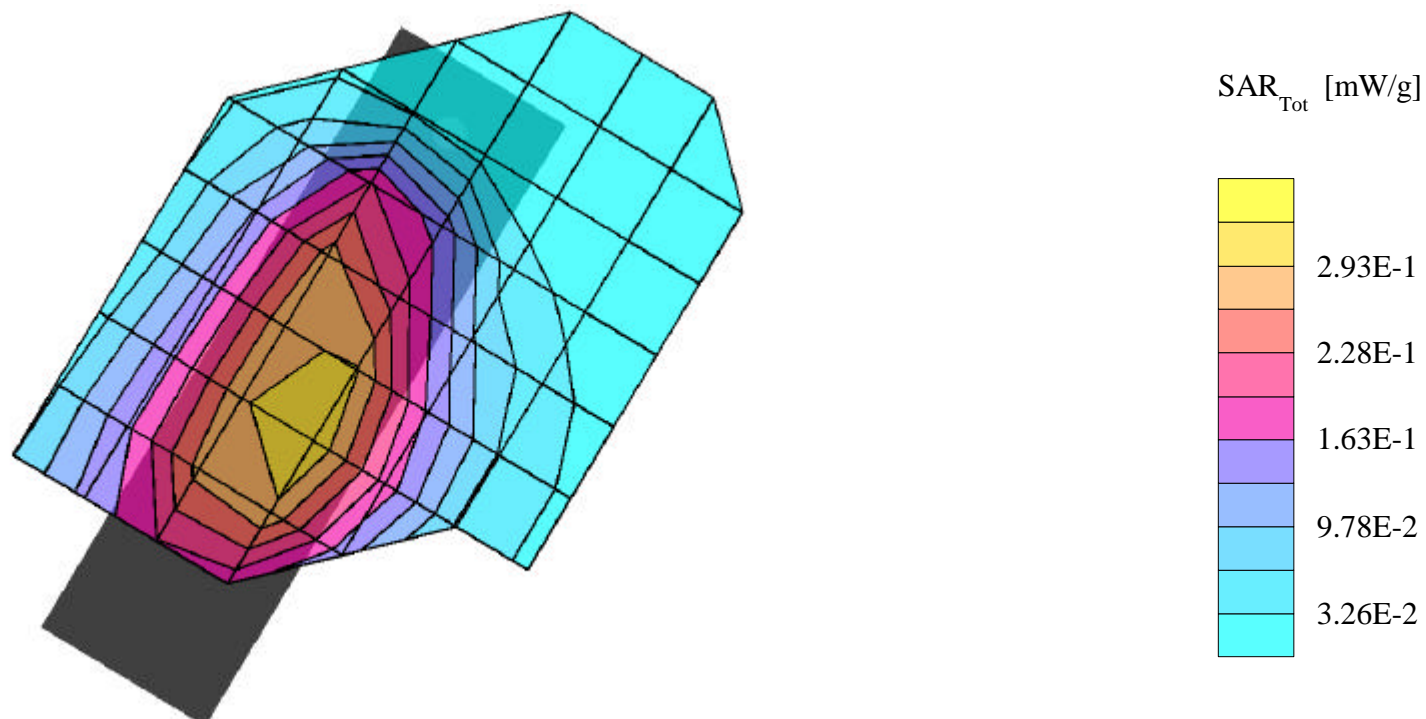
SAR (1g): 0.322 mW/g, SAR (10g): 0.241 mW/g

LGE TriMode Phone Model: LG-LX5450 with Centurion antenna

AMPS Mode, Ch.0991 [824.04MHz]; Standard Battery; Ambient Temp. = 20.4°C / Meas. Tissue Temp. = 19.1°C

Conducted Power = 26.0dBm; Left Head Phantom, Ear/15 degree Tilt position: Flip = open

Test Date --11/20/2002 [FCC/OET Bulletin 65 - Supplement C, July 2001]



LG Electronics FCC: BEJLX5450 -- 835MHz. Head SAR w/ Centurion Antenna

SAM Phantom; Right Hand Section; Probe:ET3DV6 - SN1677; ConvF(6.70,6.70,6.70)

Med. Parameters 835 MHz Brain: $\sigma = 0.93$ mho/m $\epsilon_r = 42.0$ $\rho = 1.00$ g/cm³; Antenna Position -- Out; Crest Factor 1.0

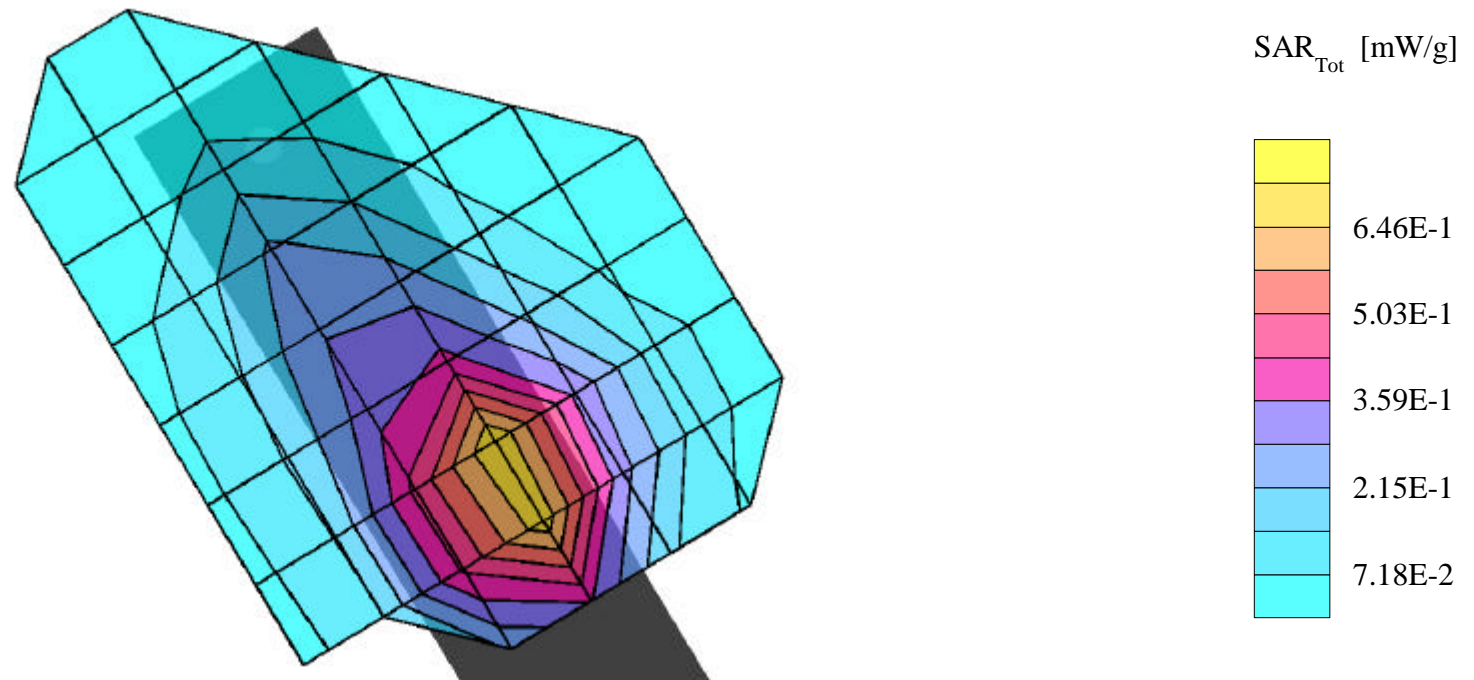
SAR (1g): 0.699 mW/g, SAR (10g): 0.478 mW/g

LGE TriMode Phone Model: LG-LX5450 with Centurion antenna

Cellular CDMA Mode, Ch.1013 [824.70MHz]; Standard Battery; Ambient Temp. = 20.4°C / Meas. Tissue Temp. = 19.1°C

Conducted Power = 24.0dBm; Right Head Phantom, Cheek/Touch position: Flip = open

Test Date --11/20/2002 [FCC/OET Bulletin 65 - Supplement C, July 2001]



LG Electronics FCC: BEJLX5450 -- 835MHz. Head SAR w/ Centurion Antenna

SAM Phantom; Right Hand Section; Probe:ET3DV6 - SN1677; ConvF(6.70,6.70,6.70)

Med. Parameters 835 MHz Brain: $\sigma = 0.93$ mho/m $\epsilon_r = 42.0$ $\rho = 1.00$ g/cm³; Antenna Position -- Out; Crest Factor 1.0

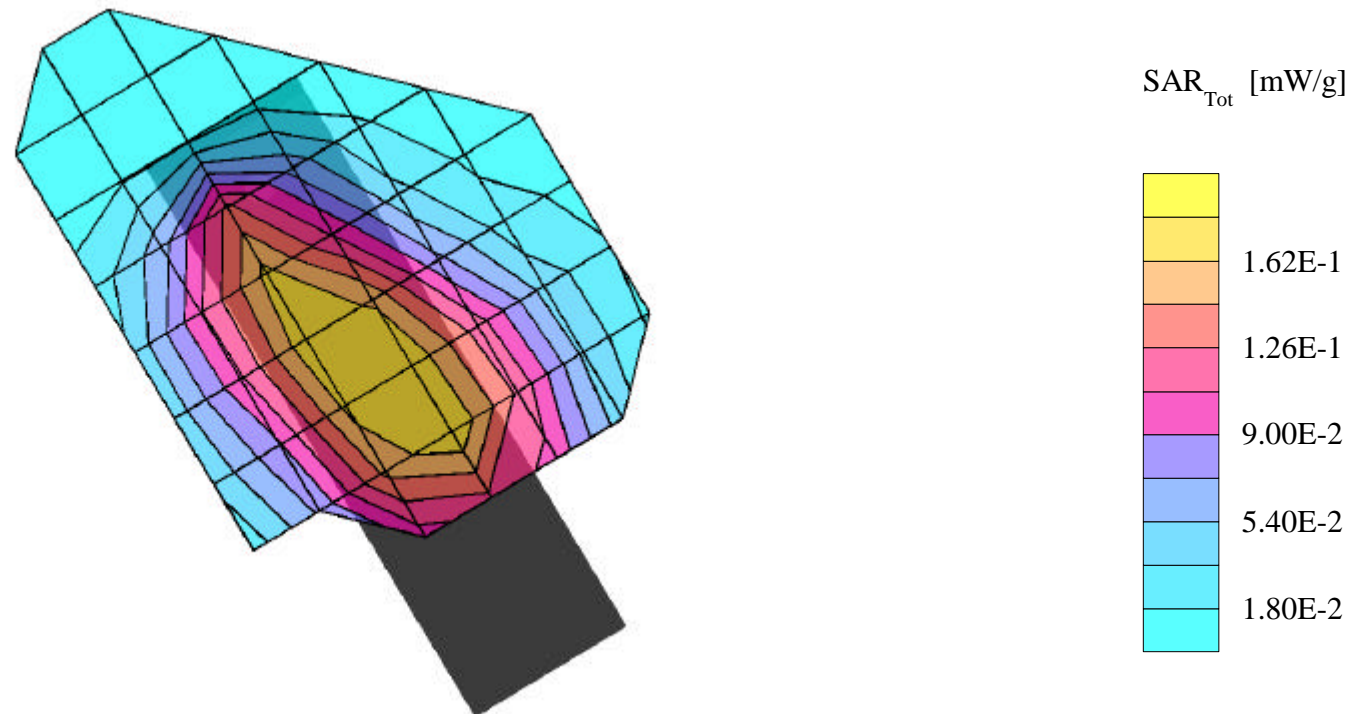
SAR (1g): 0.179 mW/g, SAR (10g): 0.136 mW/g

LGE TriMode Phone Model: LG-LX5450 with Centurion antenna

Cellular CDMA Mode, Ch.1013 [824.70MHz]; Standard Battery; Ambient Temp. = 20.4°C / Meas. Tissue Temp. = 19.1°C

Conducted Power = 24.0dBm; Right Head Phantom, Ear/15 degree Tilt position: Flip = open

Test Date --11/20/2002 [FCC/OET Bulletin 65 - Supplement C, July 2001]



LG Electronics FCC: BEJLX5450 -- 835MHz. Head SAR w/ Centurion Antenna

SAM Phantom; Left Hand Section; Probe:ET3DV6 - SN1677; ConvF(6.70,6.70,6.70)

Med. Parameters 835 MHz Brain: $\sigma = 0.93$ mho/m $\epsilon_r = 42.0$ $\rho = 1.00$ g/cm³; Antenna Position -- Out; Crest Factor 1.0

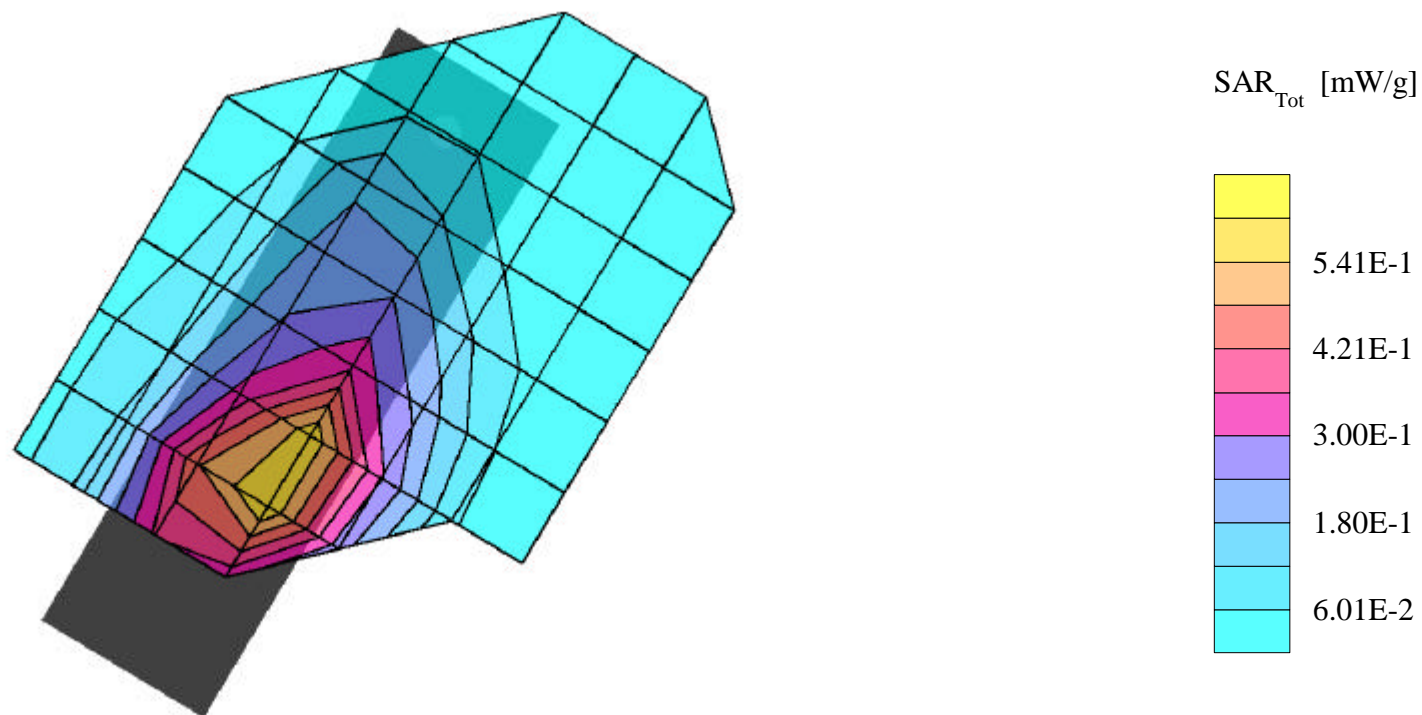
SAR (1g): 0.644 mW/g, SAR (10g): 0.425 mW/g

LGE TriMode Phone Model: LG-LX5450 with Centurion antenna

Cellular CDMA Mode, Ch.1013 [824.70MHz]; Standard Battery; Ambient Temp. = 20.4°C / Meas. Tissue Temp. = 19.1°C

Conducted Power = 24.0dBm; Left Head Phantom, Cheek/Touch position: Flip = open

Test Date --11/20/2002 [FCC/OET Bulletin 65 - Supplement C, July 2001]



LG Electronics FCC: BEJLX5450 -- 835MHz. Head SAR w/ Centurion Antenna

SAM Phantom; Left Hand Section; Probe:ET3DV6 - SN1677; ConvF(6.70,6.70,6.70)

Med. Parameters 835 MHz Brain: $\sigma = 0.93$ mho/m $\epsilon_r = 42.0$ $\rho = 1.00$ g/cm³; Antenna Position -- Out; Crest Factor 1.0

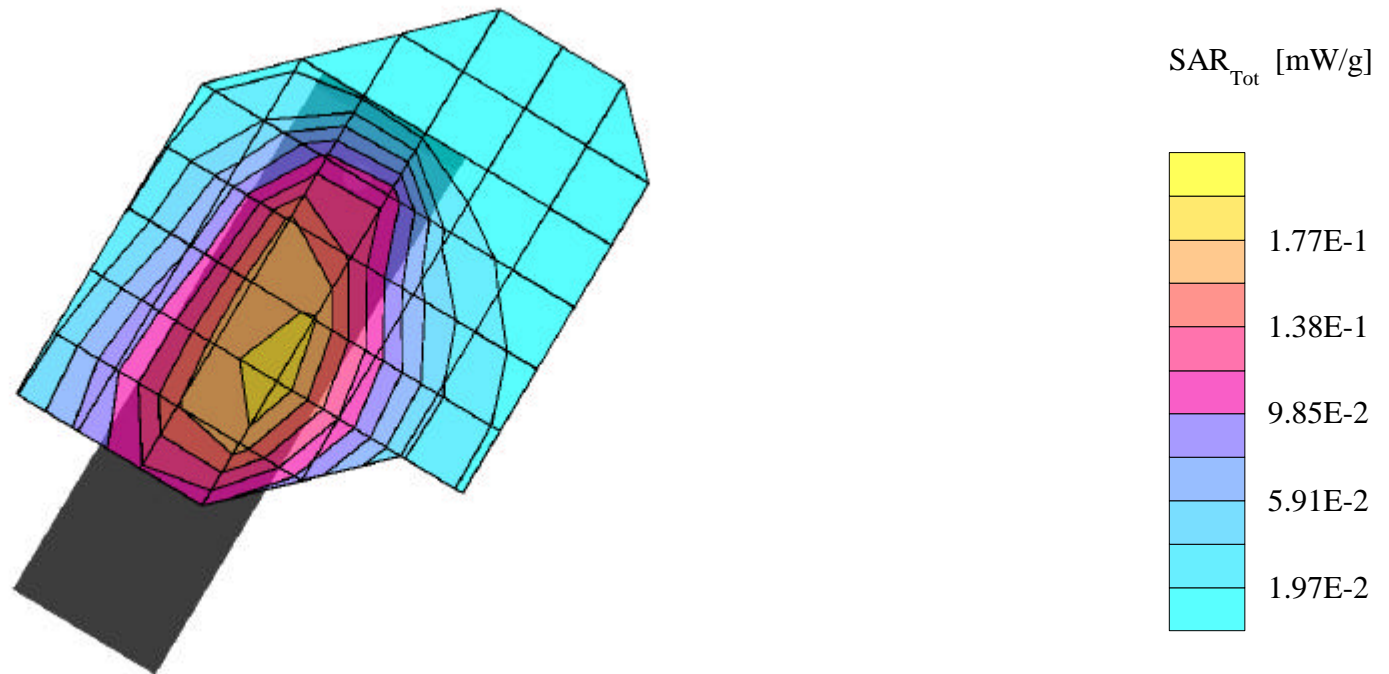
SAR (1g): 0.190 mW/g, SAR (10g): 0.142 mW/g

LGE TriMode Phone Model: LG-LX5450 with Centurion antenna

Cellular CDMA Mode, Ch.1013 [824.70MHz]; Standard Battery; Ambient Temp. = 20.4°C / Meas. Tissue Temp. = 19.1°C

Conducted Power = 24.0dBm; Left Head Phantom, Ear/15 degree Tilt position: Flip = open

Test Date --11/20/2002 [FCC/OET Bulletin 65 - Supplement C, July 2001]



LG Electronics FCC: BEJLX5450 -- 1900MHz. Head SAR w/ Centurion Antenna

SAM Phantom; Right Hand Section; Probe:ET3DV6 - SN1677; ConvF(5.30,5.30,5.30)

Med. Parameters 1900 MHz Brain: $\sigma = 1.36$ mho/m $\epsilon_r = 40.4$ $\rho = 1.00$ g/cm³; Antenna Position -- In; Crest Factor 1.0

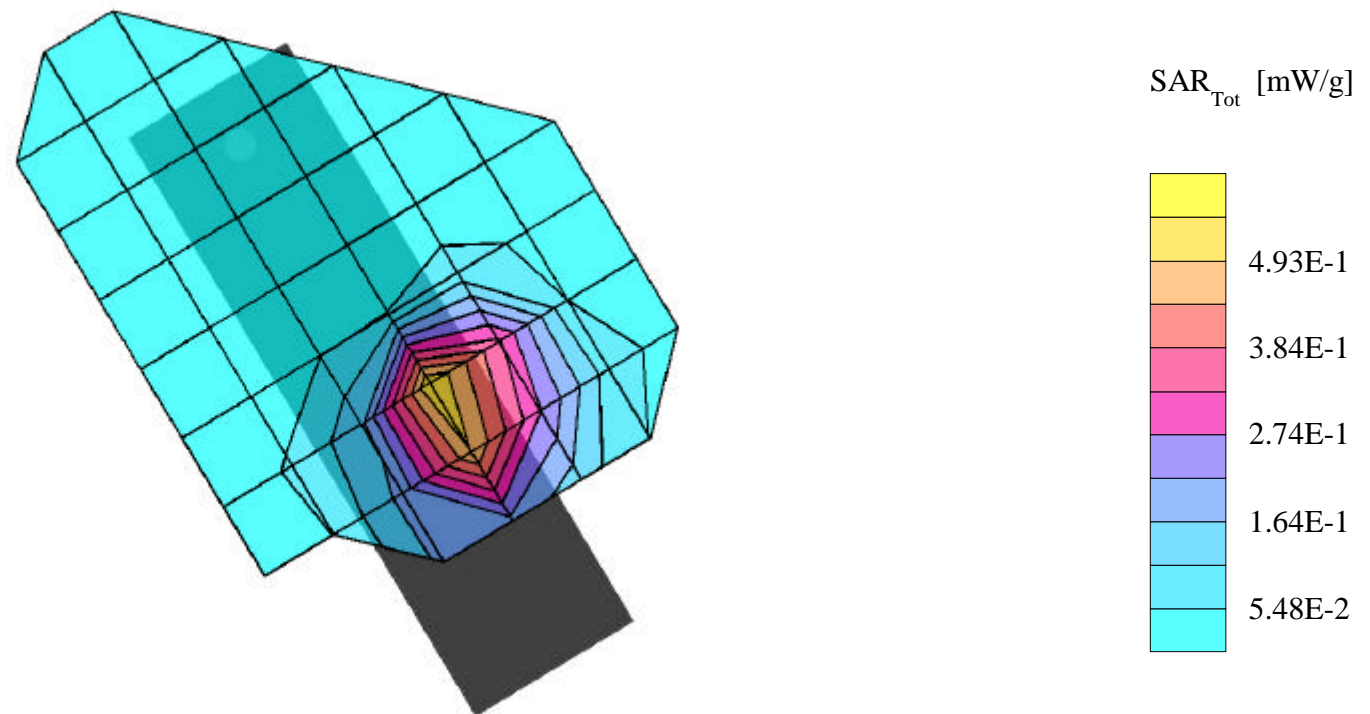
SAR (1g): 0.835 mW/g, SAR (10g): 0.419 mW/g

LGE TriMode Phone Model: LG-LX5450 with Centurion antenna

PCS CDMA Mode, Ch.0600 [1880.00MHz]; Standard Battery; Ambient Temp. = 20.0°C / Meas. Tissue Temp. = 19.4°C

Conducted Power = 24.0dBm; Right Head Phantom, Cheek/Touch position: Flip = open

Test Date --11/21/2002 [FCC/OET Bulletin 65 - Supplement C, July 2001]



LG Electronics FCC: BEJLX5450 -- 1900MHz. Head SAR w/ Centurion Antenna

SAM Phantom; Right Hand Section; Probe:ET3DV6 - SN1677; ConvF(5.30,5.30,5.30)

Med. Parameters 1900 MHz Brain: $\sigma = 1.36$ mho/m $\epsilon_r = 40.4$ $\rho = 1.00$ g/cm³; Antenna Position -- In; Crest Factor 1.0

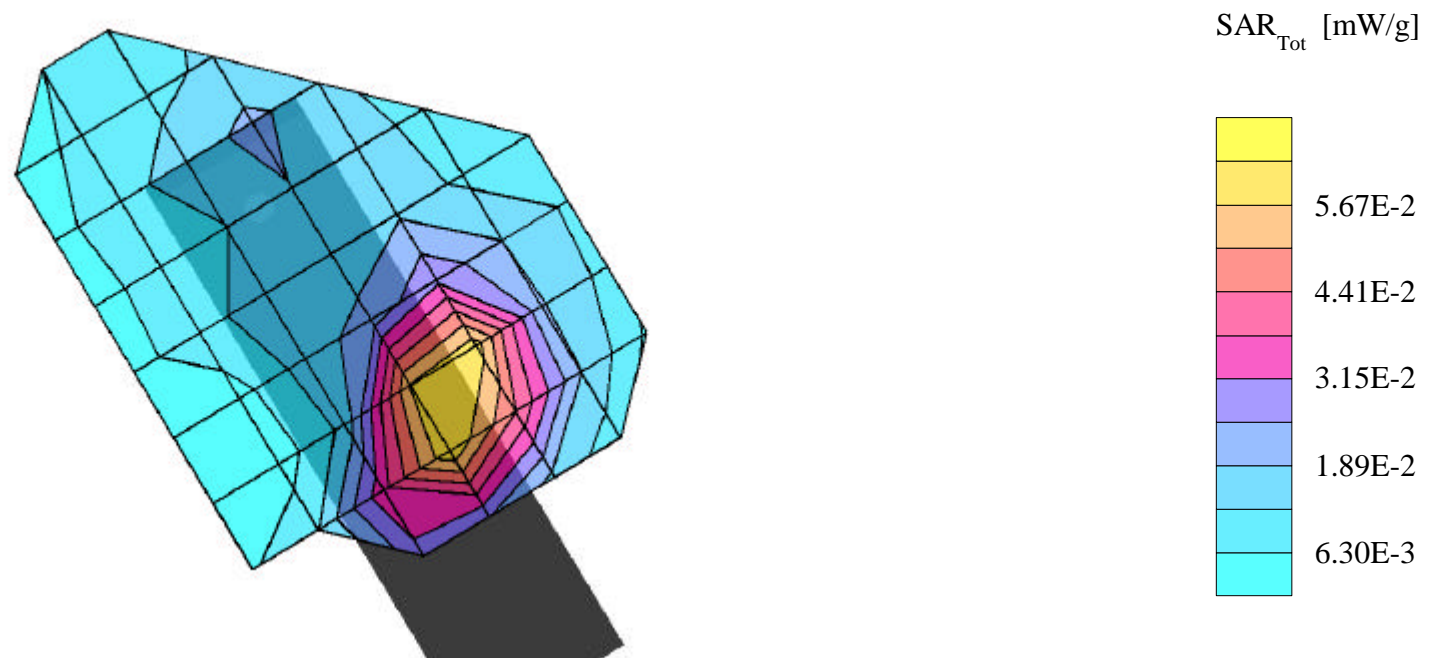
SAR (1g): 0.0720 mW/g, SAR (10g): 0.0442 mW/g

LGE TriMode Phone Model: LG-LX5450 with Centurion antenna

PCS CDMA Mode, Ch.0600 [1880.00MHz]; Standard Battery; Ambient Temp. = 20.0°C / Meas. Tissue Temp. = 19.4°C

Conducted Power = 24.0dBm; Right Head Phantom, Ear/15 degree Tilt position: Flip = open

Test Date --11/21/2002 [FCC/OET Bulletin 65 - Supplement C, July 2001]



LG Electronics FCC: BEJLX5450 -- 1900MHz. Head SAR w/ Centurion Antenna

SAM Phantom; Left Hand Section; Probe:ET3DV6 - SN1677; ConvF(5.30,5.30,5.30)

Med. Parameters 1900 MHz Brain: $\sigma = 1.36$ mho/m $\epsilon_r = 40.4$ $\rho = 1.00$ g/cm³; Antenna Position -- In; Crest Factor 1.0

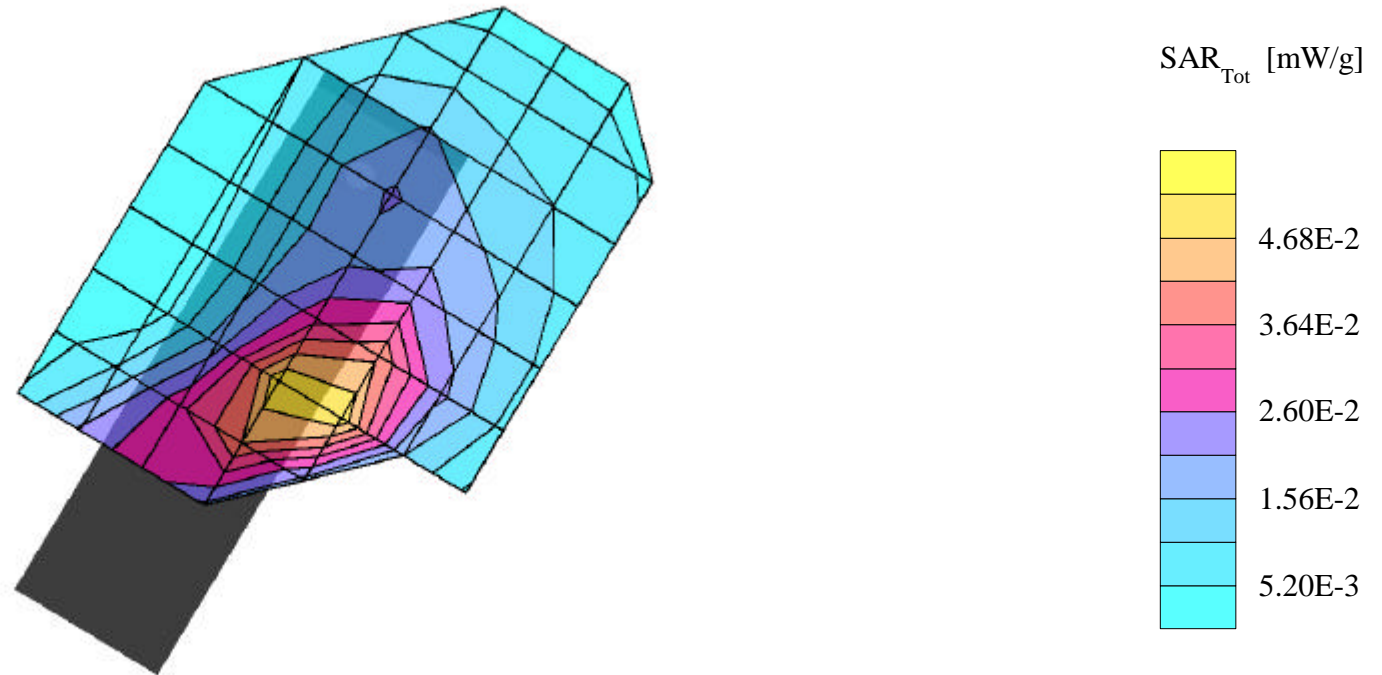
SAR (1g): 0.0548 mW/g, SAR (10g): 0.0344 mW/g

LGE TriMode Phone Model: LG-LX5450 with Centurion antenna

PCS CDMA Mode, Ch.0025 [1851.25MHz]; Standard Battery; Ambient Temp. = 20.4°C / Meas. Tissue Temp. = 19.1°C

Conducted Power = 24.0dBm; Left Head Phantom, Ear/15 degree Tilt position: Flip = open

Test Date --11/21/2002 [FCC/OET Bulletin 65 - Supplement C, July 2001]



LG Electronics FCC: BEJLX5450 -- 1900MHz. Head SAR w/ Centurion Antenna

SAM Phantom; Left Hand Section; Probe:ET3DV6 - SN1677; ConvF(5.30,5.30,5.30)

Med. Parameters 1900 MHz Brain: $\sigma = 1.36$ mho/m $\epsilon_r = 40.4$ $\rho = 1.00$ g/cm³; Antenna Position -- In; Crest Factor 1.0

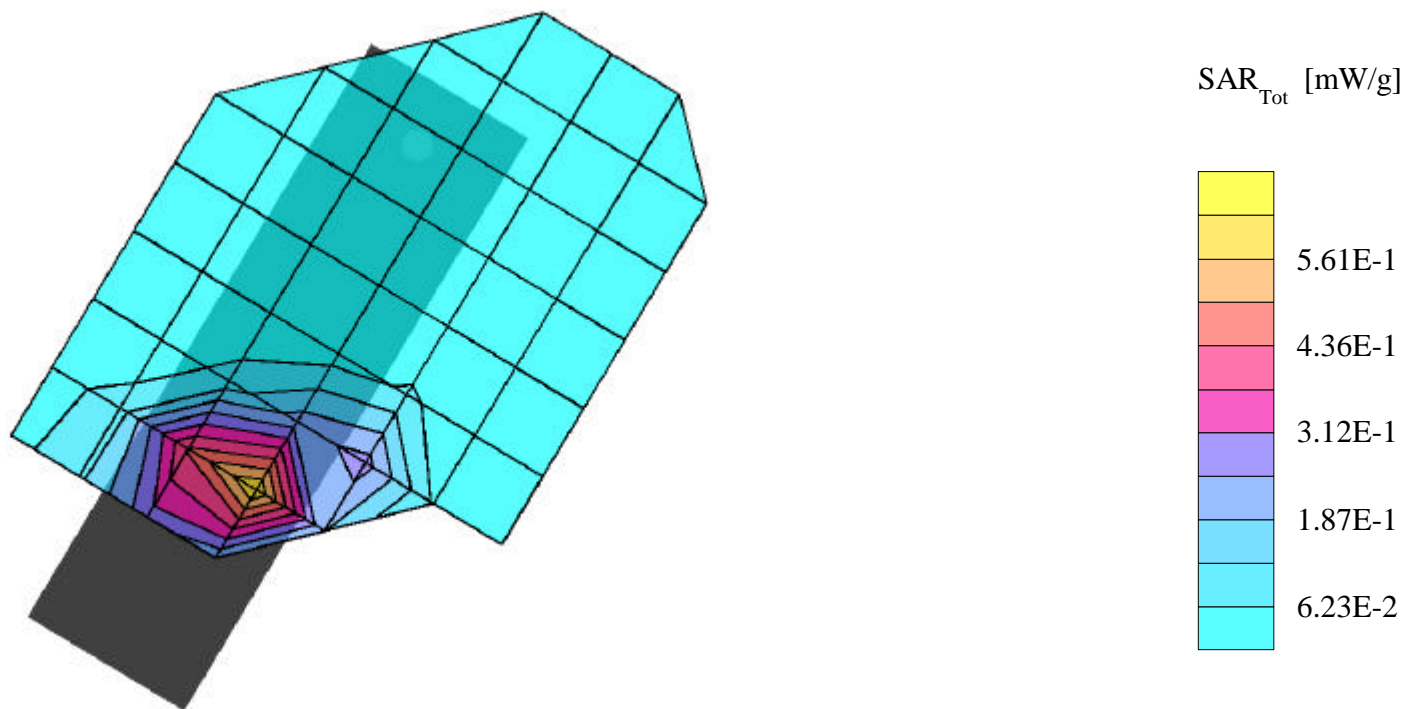
SAR (1g): 0.573 mW/g, SAR (10g): 0.320 mW/g

LGE TriMode Phone Model: LG-LX5450 with Centurion antenna

PCS CDMA Mode, Ch.0025 [1851.25MHz]; Standard Battery; Ambient Temp. = 20.4°C / Meas. Tissue Temp. = 19.1°C

Conducted Power = 24.0dBm; Left Head Phantom, Cheek/Touch position: Flip = open

Test Date --11/21/2002 [FCC/OET Bulletin 65 - Supplement C, July 2001]



LG Electronics FCC: BEJLX5450 -- 835MHz. Body SAR w/ Centurion Antenna

SAM Phantom; Flat Section; Probe:ET3DV6 - SN1677; ConvF(6.40,6.40,6.40)

Med. Parameters 835 MHz Muscle: $\sigma = 0.98$ mho/m $\epsilon_r = 54.0$ $\rho = 1.00$ g/cm³; Antenna Position -- Out; Crest Factor 1.0

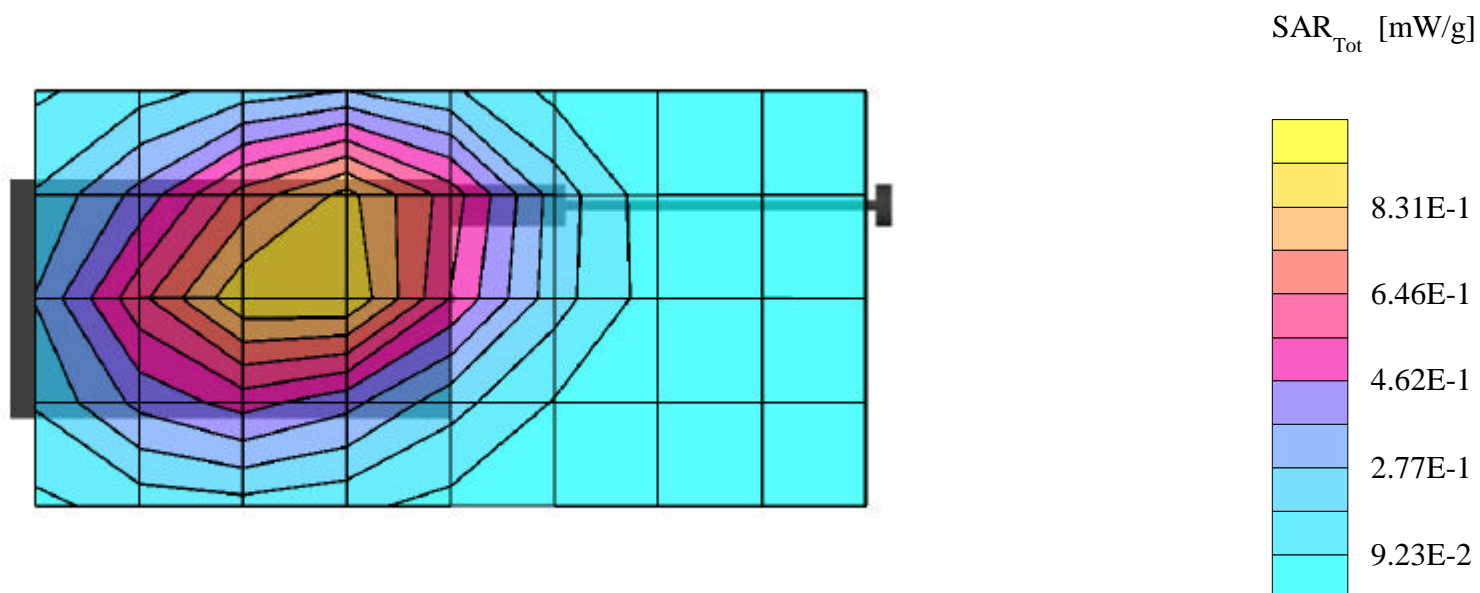
SAR (1g): 0.975 mW/g, SAR (10g): 0.680 mW/g

LGE TriMode Phone Model: LG-LX5450 with Centurion antenna

AMPS Mode, Ch.0991 [824.04MHz]; Standard Battery; Ambient Temp. = 19.7°C / Meas. Tissue Temp. = 19.2°C: Flip = closed

Conducted Power = 26.0dBm; Flat Phantom, 1.5cm from back (antenna side) of EUT to flat phantom, No Belt Clip/No Holster

Test Date --11/21/2002 [FCC/OET Bulletin 65 - Supplement C, July 2001]



LG Electronics FCC: BEJLX5450 -- 835MHz. Body SAR w/ Centurion Antenna

SAM Phantom; Flat Section; Probe:ET3DV6 - SN1677; ConvF(6.40,6.40,6.40)

Med. Parameters 835 MHz Muscle: $\sigma = 0.98$ mho/m $\epsilon_r = 54.0$ $\rho = 1.00$ g/cm³; Antenna Position -- Out; Crest Factor 1.0

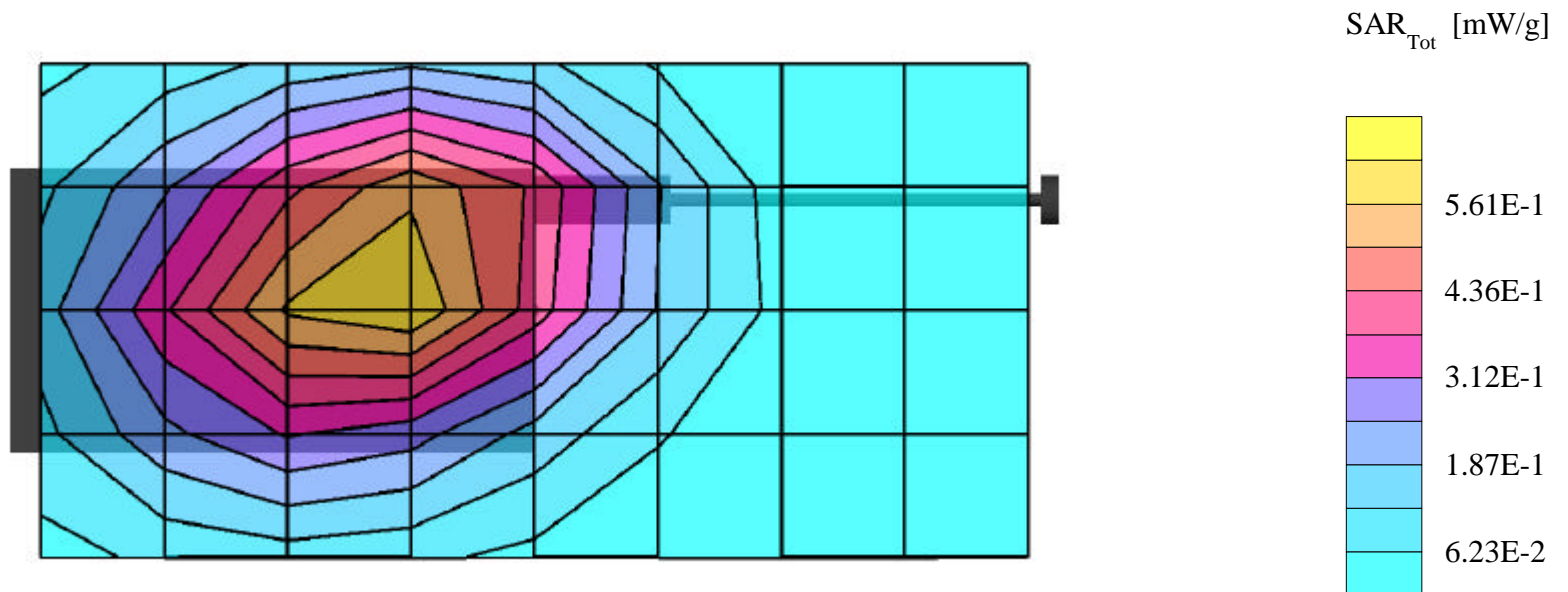
SAR (1g): 0.646 mW/g, SAR (10g): 0.449 mW/g

LGE TriMode Phone Model: LG-LX5450 with Centurion antenna

Cellular CDMA Mode, Ch.1013 [824.70MHz]; Standard Battery; Ambient Temp. = 19.7°C / Meas. Tissue Temp. = 19.2°C:Flip = closed

Conducted Power = 24.0dBm; Flat Phantom, 1.5cm from back (antenna side) of EUT to flat phantom, No Belt Clip/No Holster

Test Date --11/21/2002 [FCC/OET Bulletin 65 - Supplement C, July 2001]



LG Electronics FCC: BEJLX5450 -- 1900MHz. Body SAR w/ Centurion Antenna

SAM Phantom; Flat Section; Probe:ET3DV6 - SN1677; ConvF(4.90,4.90,4.90)

Med. Parameters 1900 MHz Muscle: $\sigma = 1.55$ mho/m $\epsilon_r = 54.9$ $\rho = 1.00$ g/cm³; Antenna Position -- Out; Crest Factor 1.0

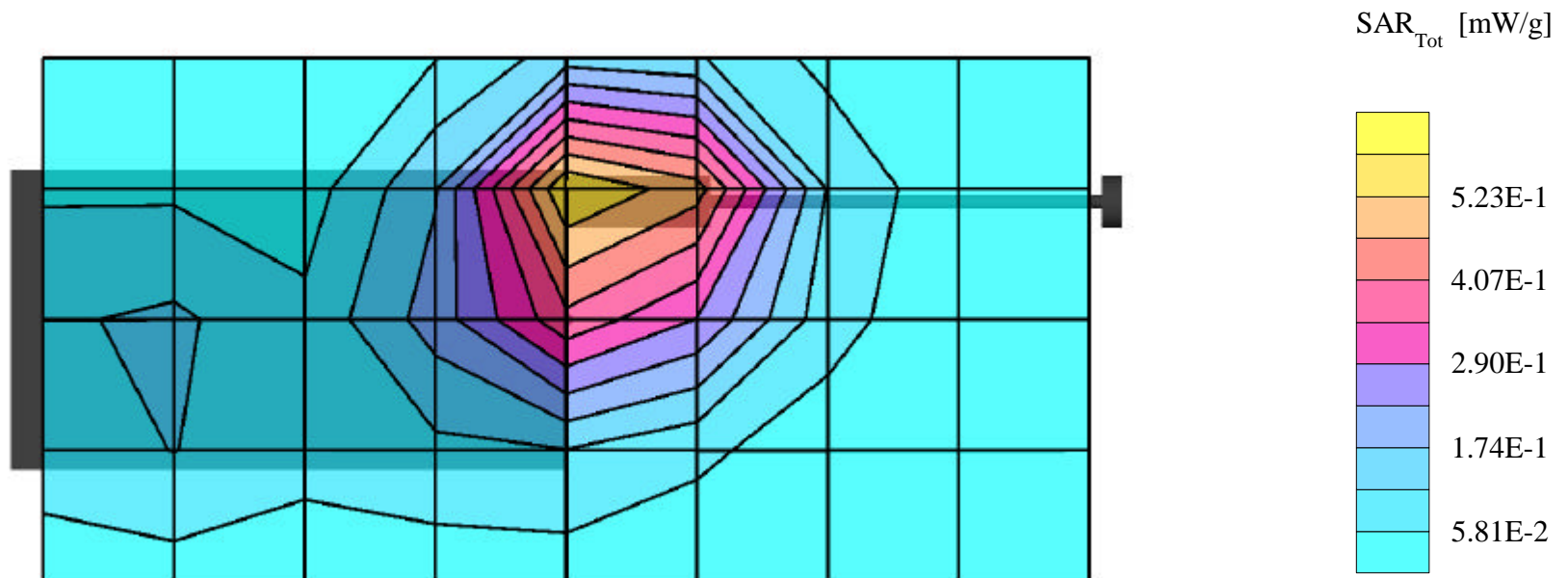
SAR (1g): 0.634 mW/g, SAR (10g): 0.355 mW/g

LGE TriMode Phone Model: LG-LX5450 with Centurion antenna

PCS CDMA Mode, Ch.0025 [1851.25MHz]; Standard Battery; Ambient Temp. = 20.0°C / Meas. Tissue Temp. = 18.4°C: Flip = closed

Conducted Power = 24.0dBm; Flat Phantom, 1.5cm from back (antenna side) of EUT to flat phantom, No Belt Clip/No Holster

Test Date --11/21/2002 [FCC/OET Bulletin 65 - Supplement C, July 2001]



LG Electronics FCC ID: BEJLX5450 -- 835MHz.Head SAR

SAM Phantom; Right Hand Section; Probe:ET3DV6 - SN1677; ConvF(6.70,6.70,6.70)

Med. Parameters 835 MHz Brain: $\sigma = 0.93$ mho/m $\epsilon_r = 42.0$ $\rho = 1.00$ g/cm³; Antenna Position -- Out; Crest Factor 1.0

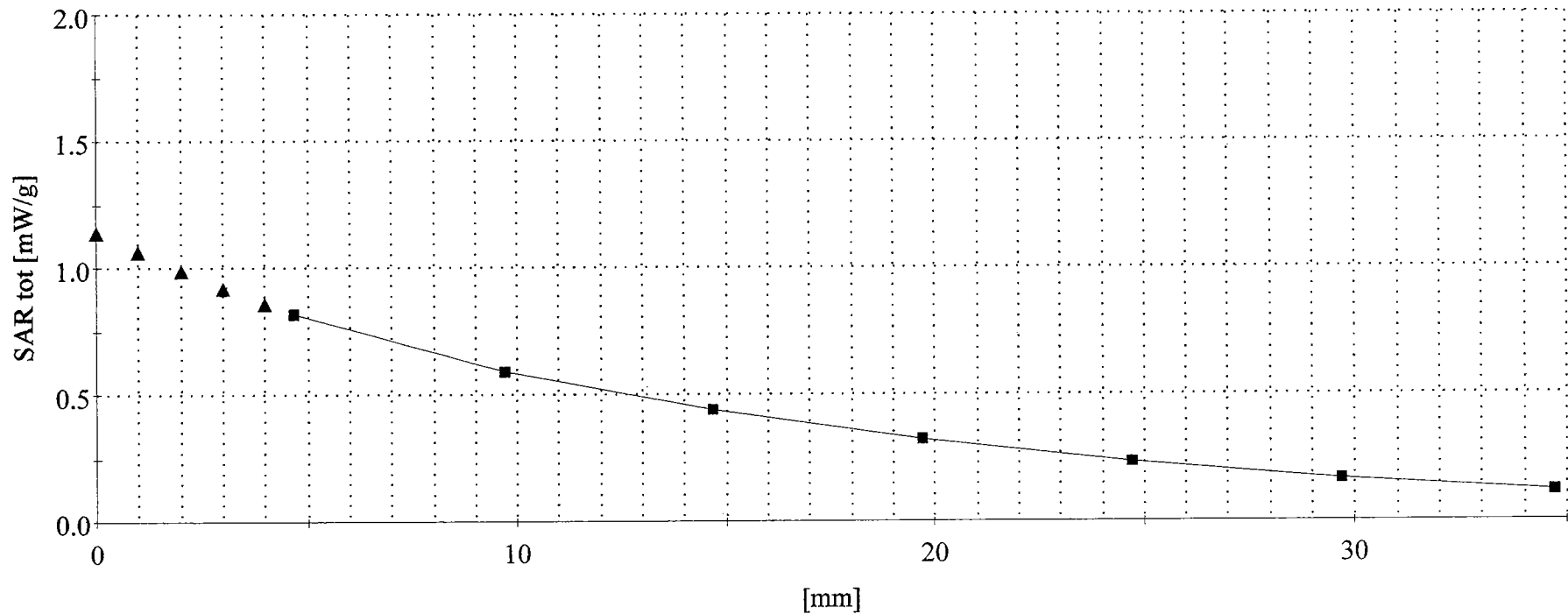
SAR (1g): 1.11 mW/g, SAR (10g): 0.744 mW/g

LGE TriMode Phone Model: LG-LX5450 with Centurion antenna

AMPS Mode, Ch.0991 [824.04MHz]; Standard Battery; Ambient Temp. = 20.4°C / Meas. Tissue Temp. = 19.1°C

Conducted Power = 26.0dBm; Right Head Phantom, Cheek/Touch position: Flip = open

Test Date --11/20/2002 [FCC/OET Bulletin 65 - Supplement C, July 2001]



LG Electronics FCC ID: BEJLX5450 -- 835MHz.Head SAR

SAM Phantom; Right Hand Section; Probe:ET3DV6 - SN1677; ConvF(6.70,6.70,6.70)

Med. Parameters 835 MHz Brain: $\sigma = 0.93$ mho/m $\epsilon_r = 42.0$ $\rho = 1.00$ g/cm³; Antenna Position -- Out; Crest Factor 1.0

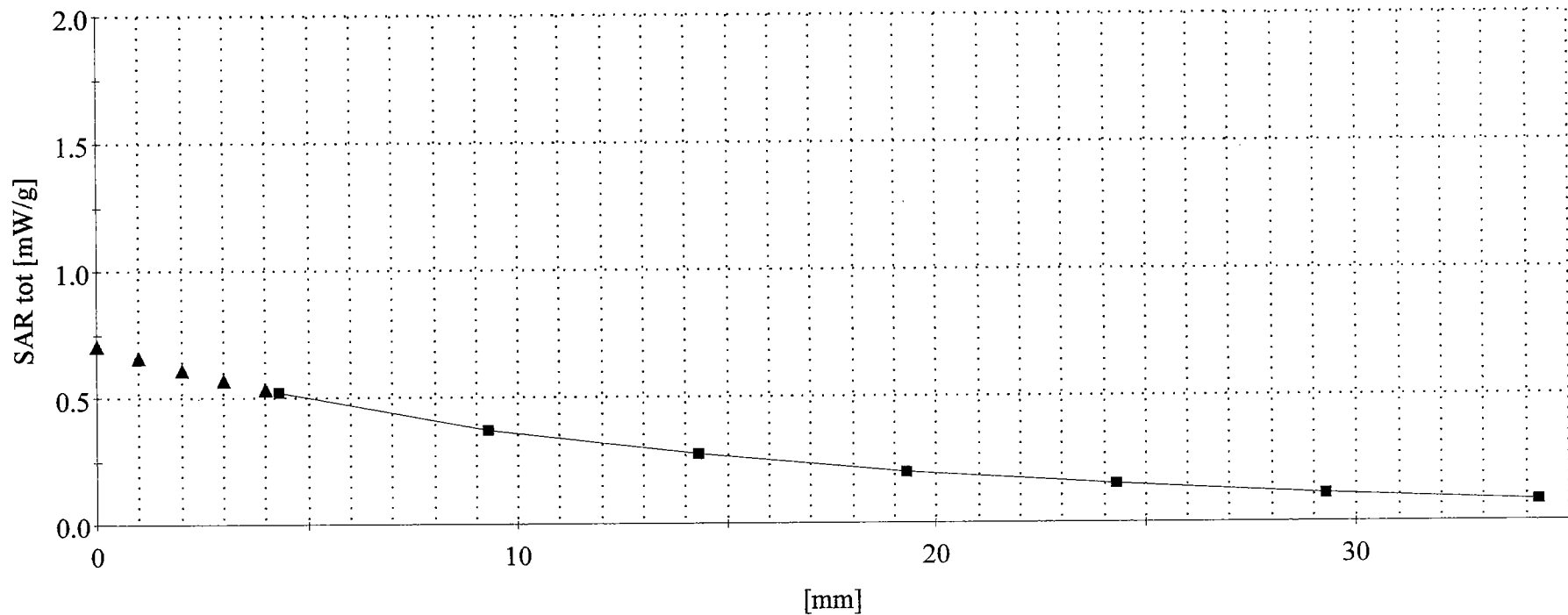
SAR (1g): 0.699 mW/g, SAR (10g): 0.478 mW/g

LGE TriMode Phone Model: LG-LX5450 with Centurion antenna

Cellular CDMA Mode, Ch.1013 [824.70MHz]; Standard Battery; Ambient Temp. = 20.4°C / Meas. Tissue Temp. = 19.1°C

Conducted Power = 24.0dBm; Right Head Phantom, Cheek/Touch position: Flip = open

Test Date --11/20/2002 [FCC/OET Bulletin 65 - Supplement C, July 2001]



LG Electronics FCC ID: BEJLX5450 -- 1900MHz.Head SAR

SAM Phantom; Right Hand Section; Probe:ET3DV6 - SN1677; ConvF(5.30,5.30,5.30)

Med. Parameters 1900 MHz Brain: $\sigma = 1.36$ mho/m $\epsilon_r = 40.4$ $\rho = 1.00$ g/cm³; Antenna Position -- In; Crest Factor 1.0

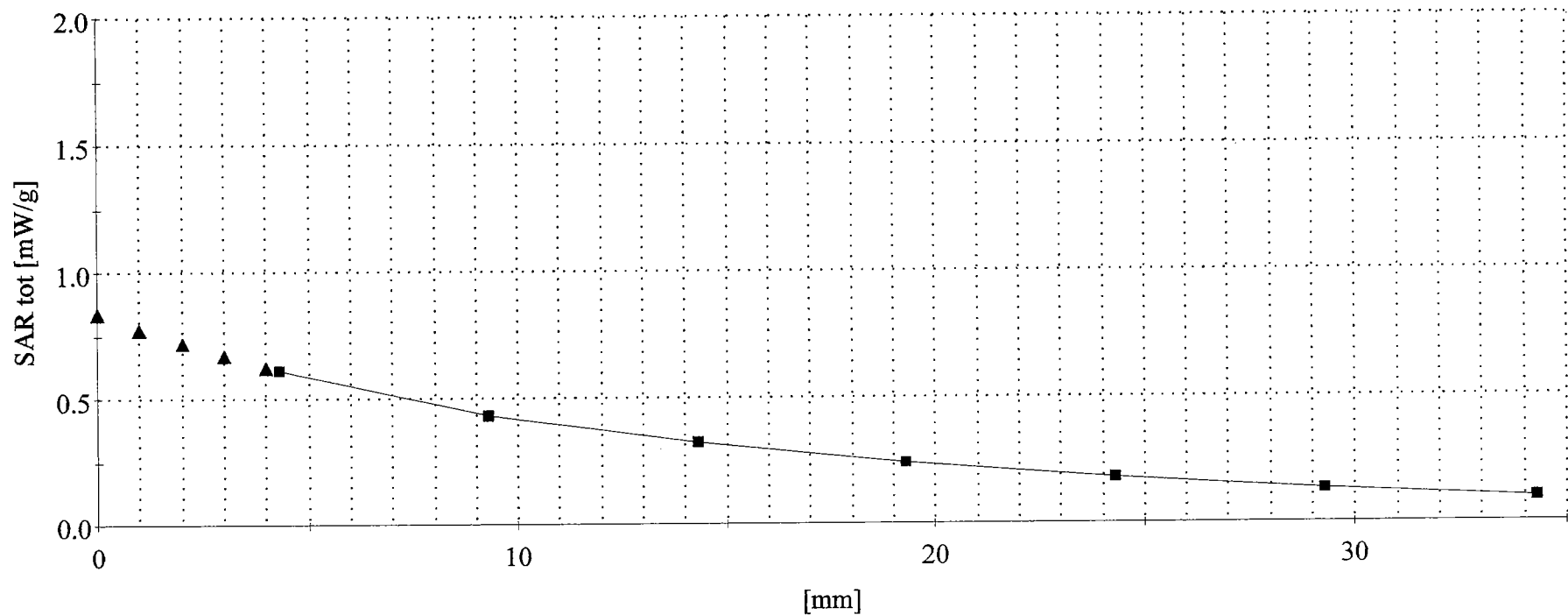
SAR (1g): 0.835 mW/g, SAR (10g): 0.419 mW/g

LGE TriMode Phone Model: LG-LX5450 with Centurion antenna

PCS CDMA Mode, Ch.0600 [1880.00MHz]; Standard Battery; Ambient Temp. = 20.0°C / Meas. Tissue Temp. = 19.4°C

Conducted Power = 24.0dBm; Right Head Phantom, Cheek/Touch position: Flip = open

Test Date --11/21/2002 [FCC/OET Bulletin 65 - Supplement C, July 2001]



LG Electronics FCC: BEJLX5450 -- 835MHz. Body SAR w/ Centurion Antenna

SAM Phantom; Flat Section; Probe:ET3DV6 - SN1677; ConvF(6.40,6.40,6.40)

Med. Parameters 835 MHz Muscle: $\sigma = 0.98$ mho/m $\epsilon_r = 54.0$ $\rho = 1.00$ g/cm³; Antenna Position -- Out; Crest Factor 1.0

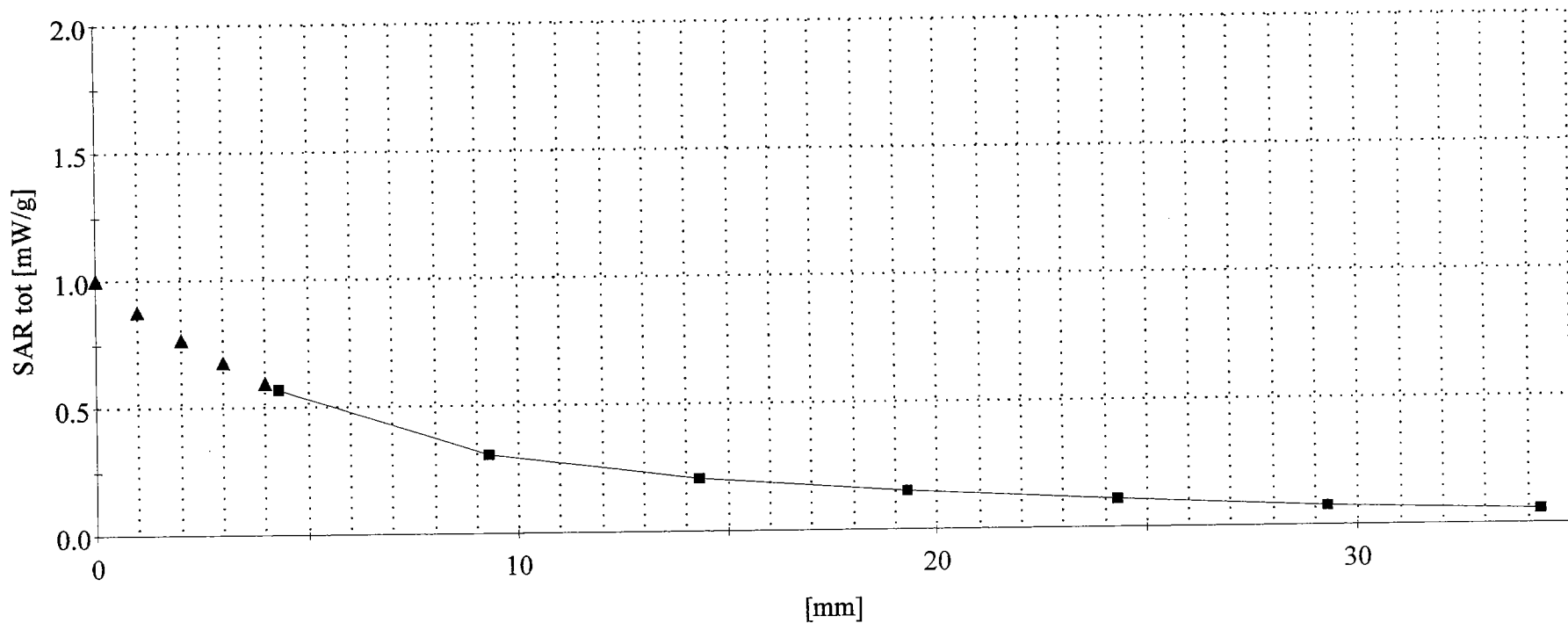
SAR (1g): 0.975 mWg, SAR (10g): 0.680 mW/g

LGE TriMode Phone Model: LG-LX5450 with Centurion antenna

AMPS Mode, Ch.0991 [824.04MHz]; Standard Battery; Ambient Temp. = 19.7°C / Meas. Tissue Temp. = 19.2°C; Flip = closed

Conducted Power = 26.0dBm; Flat Phantom, 1.5cm from back (antenna side) of EUT to flat phantom, No Belt Clip/No Holstern

Test Date --11/21/2002 [FCC/OET Bulletin 65 - Supplement C, July 2001]



LG Electronics FCC: BEJLX5450 -- 835MHz. Body SAR w/ Centurion Antenna

SAM Phantom; Flat Section; Probe:ET3DV6 - SN1677; ConvF(6.40,6.40,6.40)

Med. Parameters 835 MHz Muscle: $\sigma = 0.98$ mho/m $\epsilon_r = 54.0$ $\rho = 1.00$ g/cm³; Antenna Position -- Out; Crest Factor 1.0

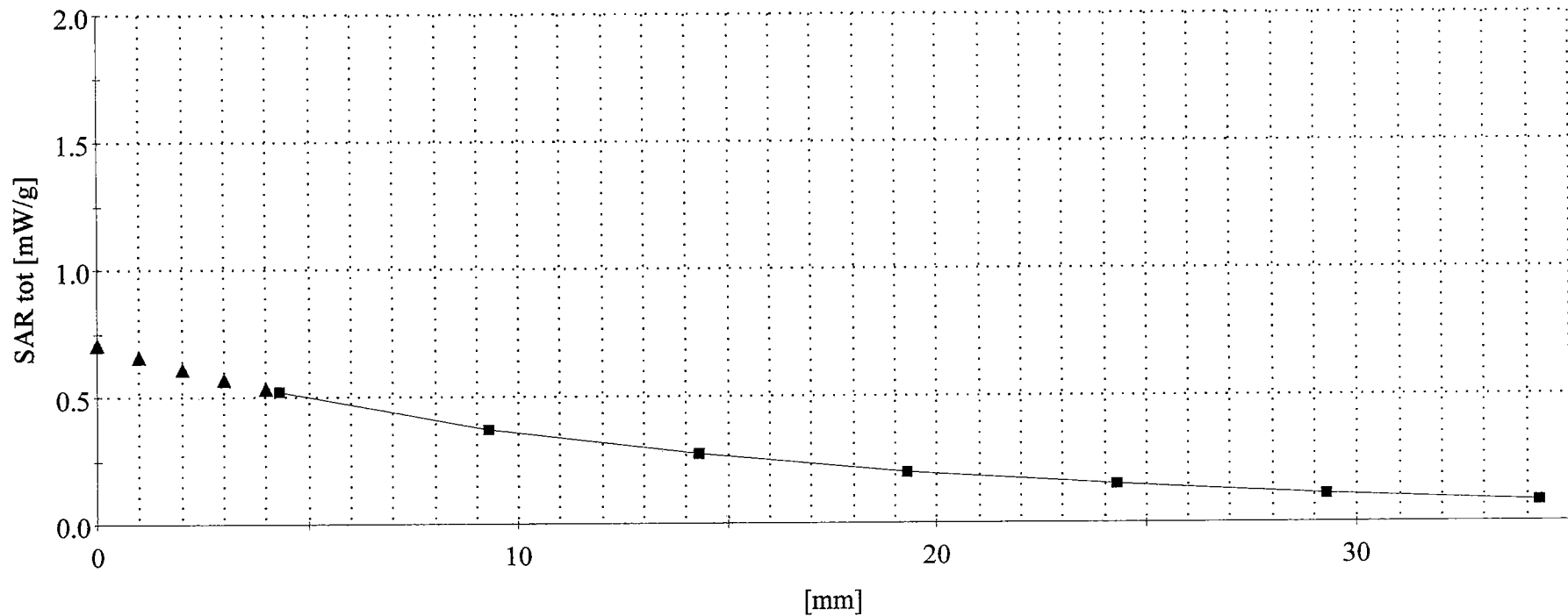
SAR (1g): 0.646 mWg, SAR (10g): 0.449 mW/g

LGE TriMode Phone Model: LG-LX5450 with Centurion antenna

Cellular CDMA Mode, Ch.1013 [824.70MHz]; Standard Battery; Ambient Temp. = 19.7°C / Meas. Tissue Temp. = 19.2°C:Flip = closed

Conducted Power = 24.0dBm; Flat Phantom, 1.5cm from back (antenna side) of EUT to flat phantom, No Belt Clip/No Holstern

Test Date --11/21/2002 [FCC/OET Bulletin 65 - Supplement C, July 2001]



LG Electronics FCC: BEJLX5450 -- 1900MHz. Body SAR w/ Centurion Antenna

SAM Phantom; Flat Section; Probe:ET3DV6 - SN1677; ConvF(4.90,4.90,4.90)

Med. Parameters 1900 MHz Muscle: $\sigma = 1.55$ mho/m $\epsilon_r = 54.9$ $\rho = 1.00$ g/cm³; Antenna Position -- Out; Crest Factor 1.0

SAR (1g): 0.634 mWg, SAR (10g): 0.355 mW/g

LGE TriMode Phone Model: LG-LX5450 with Centurion antenna

PCS CDMA Mode, Ch.0025 [1851.25MHz]; Standard Battery; Ambient Temp. = 20.0°C / Meas. Tissue Temp. = 18.4°C: Flip = closed

Conducted Power = 24.0dBm; Flat Phantom, 1.5cm from back (antenna side) of EUT to flat phantom, No Belt Clip/No Holstern

Test Date --11/21/2002 [FCC/OET Bulletin 65 - Supplement C, July 2001]

