

# PCTEST ENGINEERING LABORATORY, INC.

**DUT: Dipole 835 MHz; Type: D835V2; Serial: 4d047**

Communication System: CW; Frequency: 835 MHz; Duty Cycle: 1:1

Medium: 835 Brain ( $\sigma = 0.91$  mho/m,  $\epsilon_r = 41.55$ ,  $\rho = 1000$  kg/m<sup>3</sup>)

Phantom section: Flat Section; Space: 1.5 cm

Test Date: 06-26-2007; Ambient Temp: 23.5°C; Tissue Temp: 21.4°C

Probe: ES3DV2 - SN3022; ConvF(6.05, 6.05, 6.05); Calibrated: 9/20/2006

Sensor-Surface: 3mm (Mechanical Surface Detection)

Electronics: DAE3 Sn455; Calibrated: 10/16/2006

Phantom: SAM Main; Type: SAM 4.0; Serial: TP:1406

Measurement SW: DASY4, V4.7 Build 53; Postprocessing SW: SEMCAD, V1.8 Build 172

## 835 MHz Dipole Validation

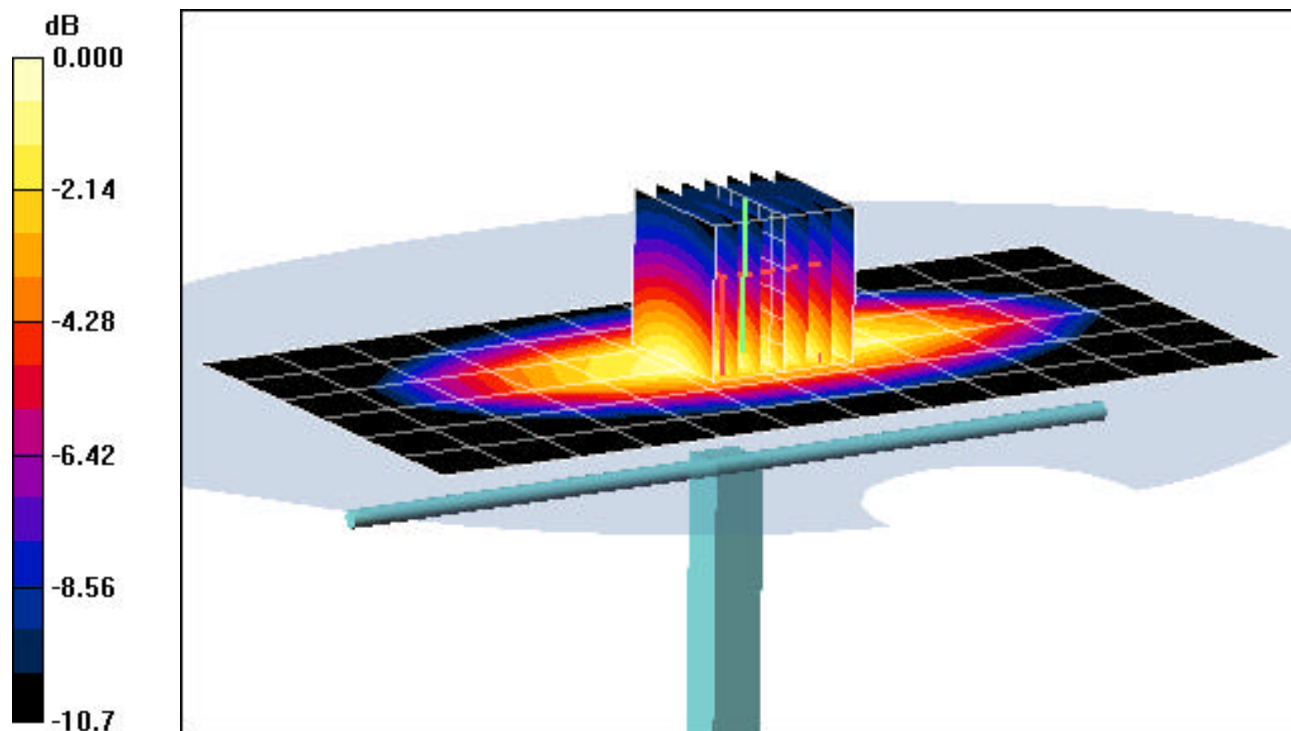
**Area Scan (7x13x1):** Measurement grid: dx=15mm, dy=15mm

**Zoom Scan (7x7x7)/Cube 0:** Measurement grid: dx=5mm, dy=5mm, dz=5mm

Input Power = 24.0 dBm (250 mW)

**SAR(1 g) = 2.35 mW/g; SAR(10 g) = 1.52 mW/g**

Target SAR(1g) = 2.29 mW/g; Deviation = +2.62 %



0 dB = 2.77mW/g

# PCTEST ENGINEERING LABORATORY, INC.

**DUT: Dipole 1900 MHz; Type: D1900V2; Serial: 5d080**

Communication System: CW; Frequency: 1900 MHz; Duty Cycle: 1:1

Medium: 1900 Brain ( $\sigma = 1.42$  mho/m,  $\epsilon_r = 40.36$ ,  $\rho = 1000$  kg/m<sup>3</sup>)

Phantom section: Flat Section; Space: 1.0 cm

Test Date: 06-27-2007; Ambient Temp: 23.7°C; Tissue Temp: 21.3°C

Probe: ES3DV2 - SN3022; ConvF(5.03, 5.03, 5.03); Calibrated: 9/20/2006

Sensor-Surface: 3mm (Mechanical Surface Detection)

Electronics: DAE3 Sn455; Calibrated: 10/16/2006

Phantom: SAM Main; Type: SAM 4.0; Serial: TP-1406

Measurement SW: DASY4, V4.7 Build 53; Postprocessing SW: SEMCAD, V1.8 Build 172

## 1900 MHz Dipole Validation

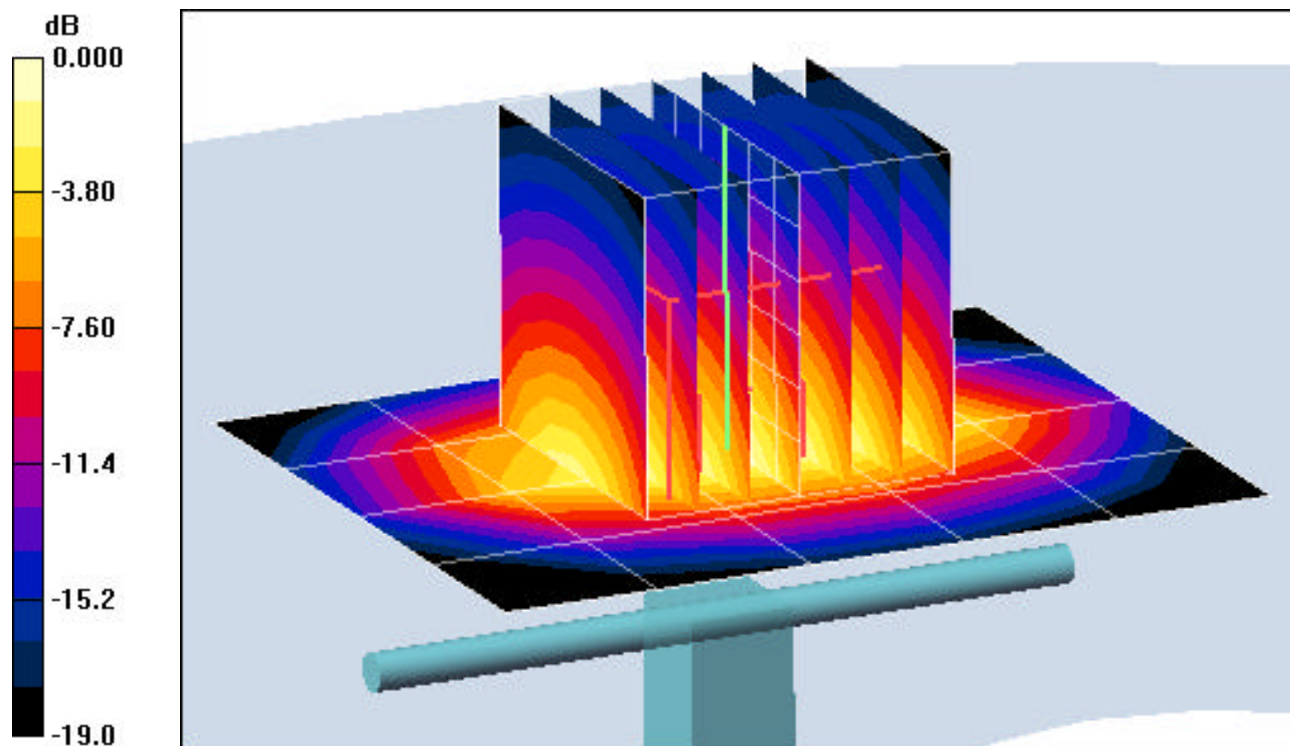
**Area Scan (5x6x1):** Measurement grid: dx=15mm, dy=15mm

**Zoom Scan (7x7x7)/Cube 0:** Measurement grid: dx=5mm, dy=5mm, dz=5mm

Input Power = 20.0 dBm (100 mW)

**SAR(1 g) = 3.96 mW/g; SAR(10 g) = 2.12 mW/g**

Target SAR(1g) = 3.77 mW/g; Deviation = +5.04 %



0 dB = 5.73mW/g