

PCTEST ENGINEERING LABORATORY, INC.

**DUT: LG LX360; Type: CDMA Dual Band Phone w/ Bluetooth + Evdo; Serial: SAR
Conducted Power: 24.5 dBm.**

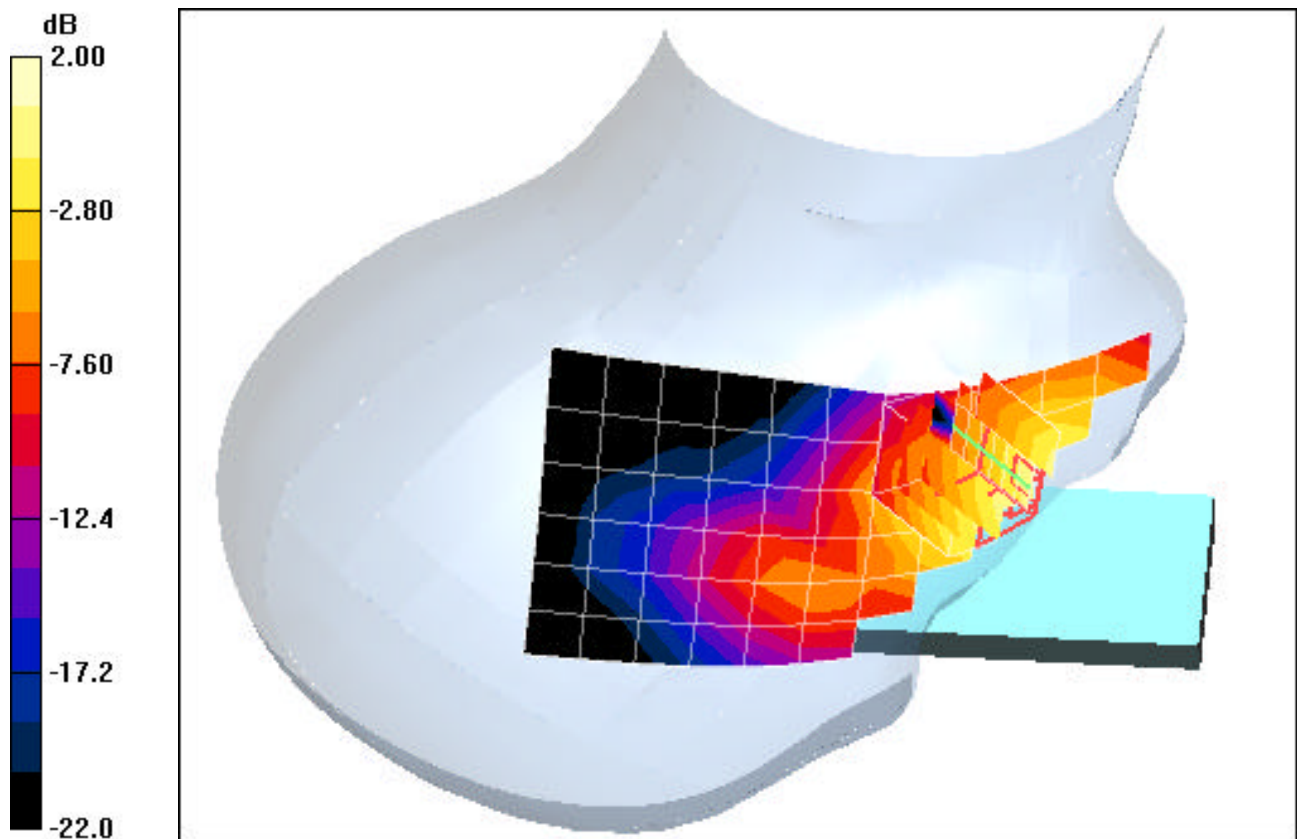
Communication System: Cellular CDMA; Frequency: 836.52 MHz; Duty Cycle: 1:1
Medium: 835 Brain ($\sigma = 0.90$ mho/m, $\epsilon_r = 40.53$, $\rho = 1000$ kg/m³)
Phantom section: Right Section

Test Date: 12-11-2006; Ambient Temp: 23.4°C; Tissue Temp: 21.5°C

Probe: EX3DV4 - SN3561; ConvF(7.94, 7.94, 7.94); Calibrated: 11/23/2006
Sensor-Surface: 3mm (Mechanical Surface Detection)
Electronics: DAE3 Sn455; Calibrated: 10/16/2006
Phantom: SAM Main; Type: SAM 4.0; Serial: TP:1197
Measurement SW: DASY4, V4.7 Build 44; Postprocessing SW: SEMCAD, V1.8 Build 171

Mode: CDMA, Right Head, Touch, Ch.384, Standard Battery, Antenna Internal

Area Scan (7x14x1): Measurement grid: dx=15mm, dy=15mm
Zoom Scan (5x5x7)/Cube 0: Measurement grid: dx=8mm, dy=8mm, dz=5mm
Reference Value = 3.87 V/m
Peak SAR (extrapolated) = 0.997 W/kg
SAR(1 g) = 0.740 mW/g; SAR(10 g) = 0.493 mW/g



0 dB = 0.814mW/g

PCTEST ENGINEERING LABORATORY, INC.

**DUT: LG LX360; Type: CDMA Dual Band Phone w/ Bluetooth + EvDO; Serial: SAR 1
Conducted Power: 24.5 dBm.**

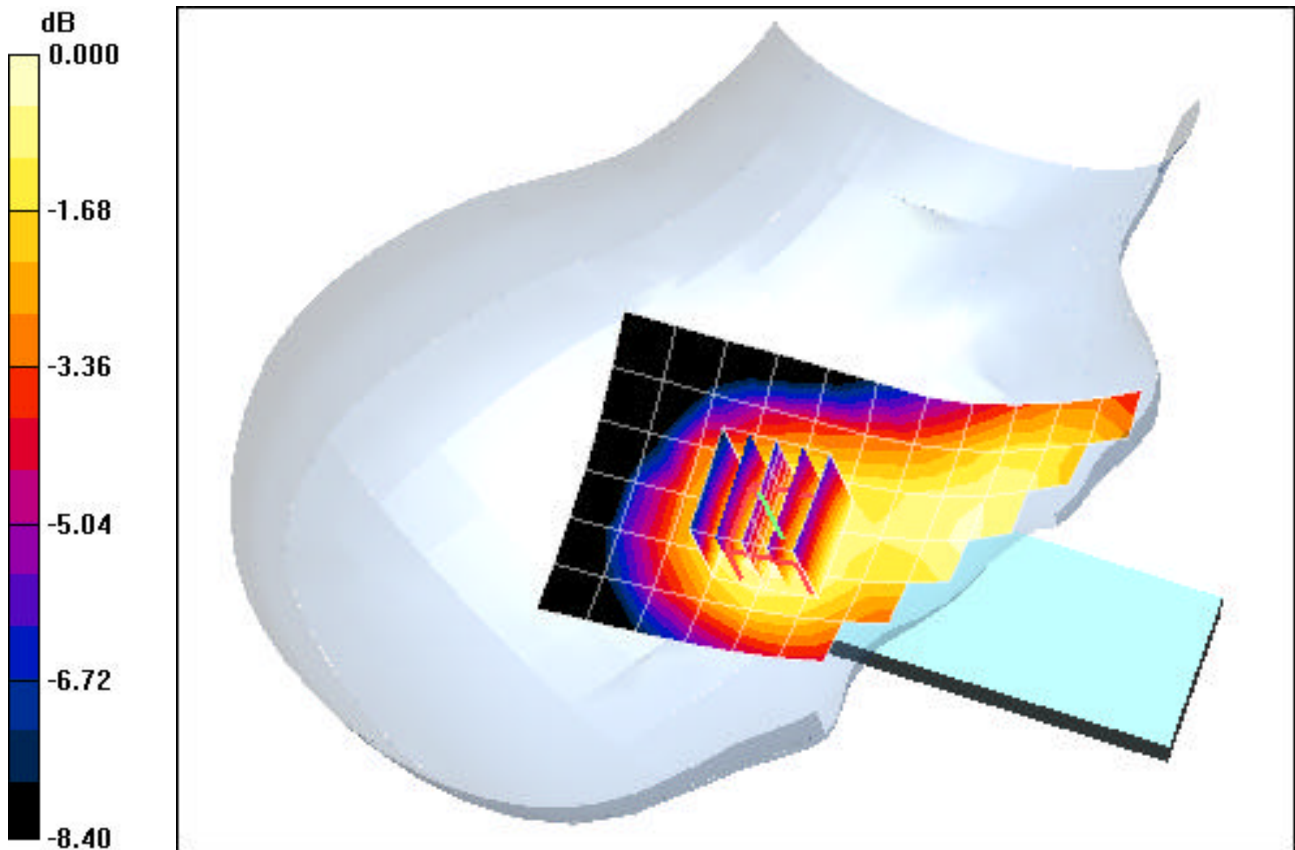
Communication System: Cellular CDMA; Frequency: 836.52 MHz; Duty Cycle: 1:1
Medium: 835 Brain ($\sigma = 0.90$ mho/m, $\epsilon_r = 40.53$, $\rho = 1000$ kg/m³)
Phantom section: Right Section

Test Date: 12-11-2006; Ambient Temp: 23.4°C; Tissue Temp: 21.5°C

Probe: EX3DV4 - SN3561; ConvF(7.94, 7.94, 7.94); Calibrated: 11/23/2006
Sensor-Surface: 3mm (Mechanical Surface Detection)
Electronics: DAE3 Sn455; Calibrated: 10/16/2006
Phantom: SAM Main; Type: SAM 4.0; Serial: TP:1197
Measurement SW: DASY4, V4.7 Build 44; Postprocessing SW: SEMCAD, V1.8 Build 171

Mode: CDMA, Right Head, Tilt, Ch.384, Standard Battery, Antenna Internal

Area Scan (7x14x1): Measurement grid: dx=15mm, dy=15mm
Zoom Scan (5x5x7)/Cube 0: Measurement grid: dx=8mm, dy=8mm, dz=5mm
Reference Value = 6.79 V/m
Peak SAR (extrapolated) = 0.093 W/kg
SAR(1 g) = 0.077 mW/g; SAR(10 g) = 0.060 mW/g



0 dB = 0.083mW/g

PCTEST ENGINEERING LABORATORY, INC.

**DUT: LG LX360; Type: CDMA Dual Band Phone w/ Bluetooth + Evdo; Serial: SAR 1
Conducted Power: 24.5 dBm**

Communication System: Cellular CDMA; Frequency: 836.52 MHz; Duty Cycle: 1:1
Medium: 835 Brain ($\sigma = 0.90$ mho/m, $\epsilon_r = 40.53$, $\rho = 1000$ kg/m³)
Phantom section: Left Section

Test Date: 12-11-2006; Ambient Temp: 23.4°C; Tissue Temp: 21.5°C

Probe: EX3DV4 - SN3561; ConvF(7.94, 7.94, 7.94); Calibrated: 11/23/2006

Sensor-Surface: 3mm (Mechanical Surface Detection)

Electronics: DAE3 Sn455; Calibrated: 10/16/2006

Phantom: SAM Main; Type: SAM 4.0; Serial: TP:1197

Measurement SW: DASY4, V4.7 Build 44; Postprocessing SW: SEMCAD, V1.8 Build 171

Mode: CDMA, Left Head, Touch, Ch.384, Standard Battery, Antenna Internal

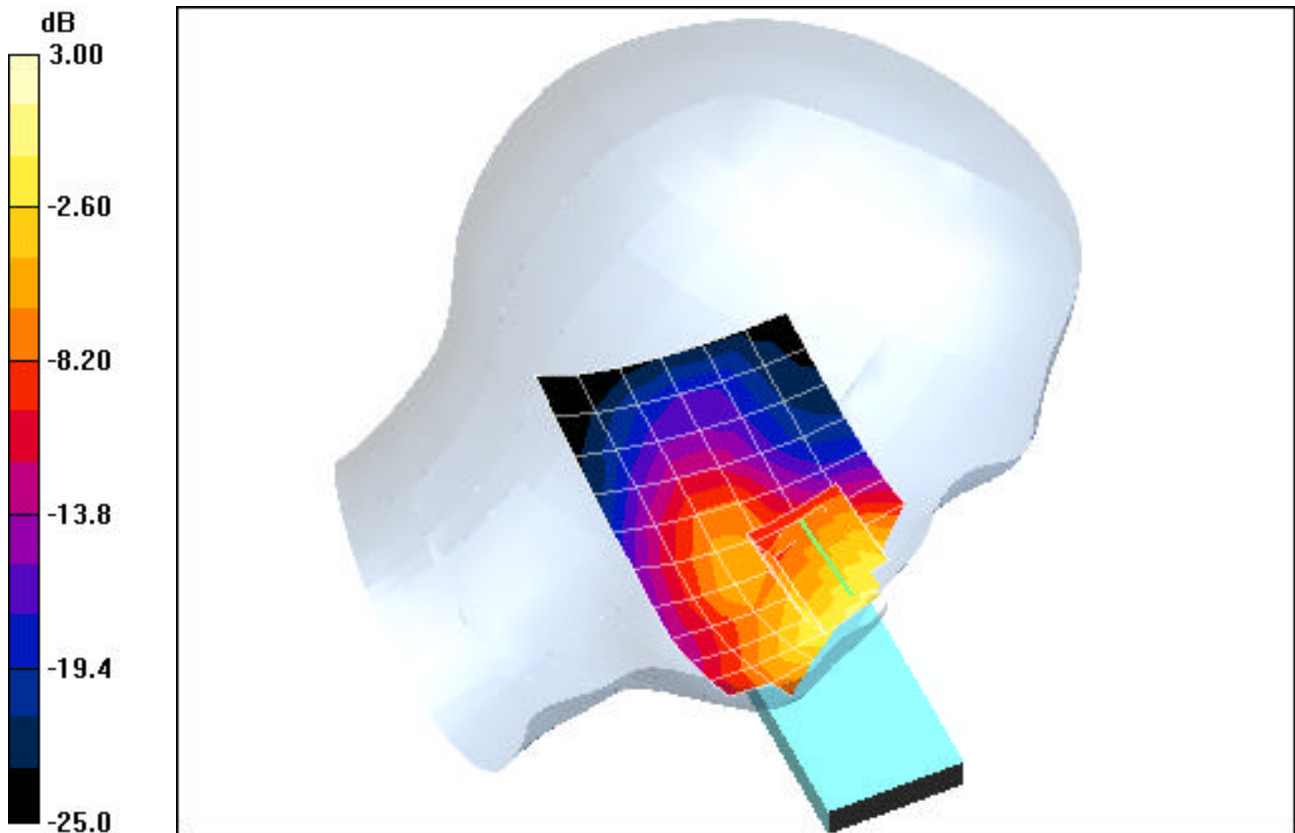
Area Scan (7x14x1): Measurement grid: dx=15mm, dy=15mm

Zoom Scan (5x5x7)/Cube 0: Measurement grid: dx=8mm, dy=8mm, dz=5mm

Reference Value = 4.84 V/m

Peak SAR (extrapolated) = 0.869 W/kg

SAR(1 g) = 0.707 mW/g; SAR(10 g) = 0.463 mW/g



0 dB = 0.778mW/g

PCTEST ENGINEERING LABORATORY, INC.

**DUT: LG LX360; Type: CDMA Dual Band Phone w/ Bluetooth + EvDO; Serial: SAR 1
Conducted Power: 24.5 dBm.**

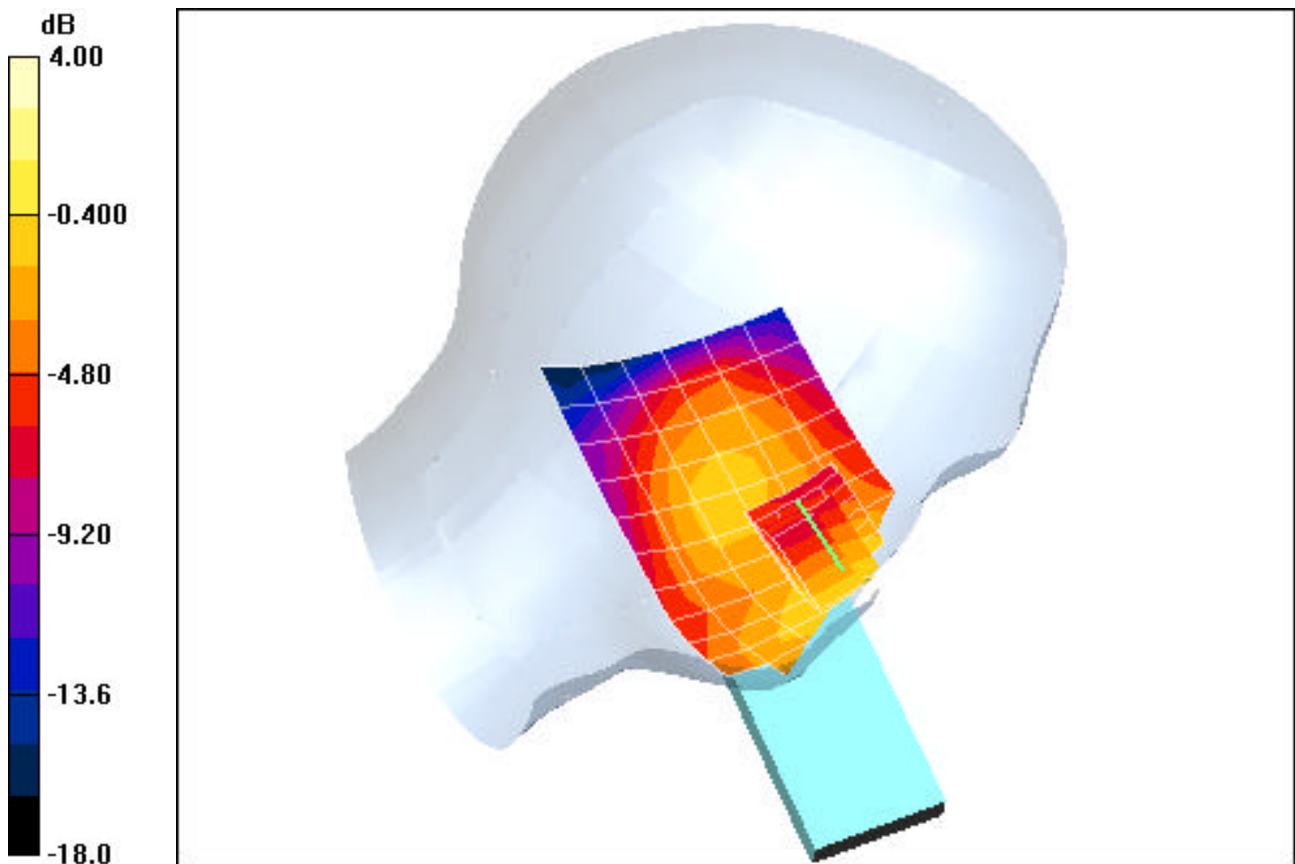
Communication System: Cellular CDMA; Frequency: 836.52 MHz; Duty Cycle: 1:1
Medium: 835 Brain ($\sigma = 0.90$ mho/m, $\epsilon_r = 40.53$, $\rho = 1000$ kg/m³)
Phantom section: Left Section

Test Date: 12-11-2006; Ambient Temp: 23.4°C; Tissue Temp: 21.5°C

Probe: EX3DV4 - SN3561; ConvF(7.94, 7.94, 7.94); Calibrated: 11/23/2006
Sensor-Surface: 3mm (Mechanical Surface Detection)
Electronics: DAE3 Sn455; Calibrated: 10/16/2006
Phantom: SAM Main; Type: SAM 4.0; Serial: TP:1197
Measurement SW: DASY4, V4.7 Build 44; Postprocessing SW: SEMCAD, V1.8 Build 171

Mode: CDMA, Left Head, Tilt, Ch.384, Standard Battery, Antenna Internal

Area Scan (7x14x1): Measurement grid: dx=15mm, dy=15mm
Zoom Scan (5x5x7)/Cube 0: Measurement grid: dx=8mm, dy=8mm, dz=5mm
Reference Value = 7.31 V/m
Peak SAR (extrapolated) = 0.117 W/kg
SAR(1 g) = 0.094 mW/g; SAR(10 g) = 0.072 mW/g



0 dB = 0.104mW/g

PCTEST ENGINEERING LABORATORY, INC.

**DUT: LG LX360; Type: CDMA Dual Band Phone w/ Bluetooth + EvDO; Serial: SAR 1
Conducted Power: 24.5 dBm.**

Communication System: PCS CDMA; Frequency: 1880 MHz; Duty Cycle: 1:1

Medium: 1900 Brain ($\sigma = 1.43$ mho/m, $\epsilon_r = 39.09$, $\rho = 1000$ kg/m³)

Phantom section: Right Section

Test Date: 12-12-2006; Ambient Temp: 23.3°C; Tissue Temp: 21.2°C

Probe: EX3DV4 - SN3561; ConvF(6.99, 6.99, 6.99); Calibrated: 11/23/2006

Sensor-Surface: 3mm (Mechanical Surface Detection)

Electronics: DAE3 Sn455; Calibrated: 10/16/2006

Phantom: SAM Main; Type: SAM 4.0; Serial: TP:1197

Measurement SW: DASY4, V4.7 Build 44; Postprocessing SW: SEMCAD, V1.8 Build 171

Mode: PCS, Right Head, Touch, Ch.600, Standard Battery, Antenna Internal

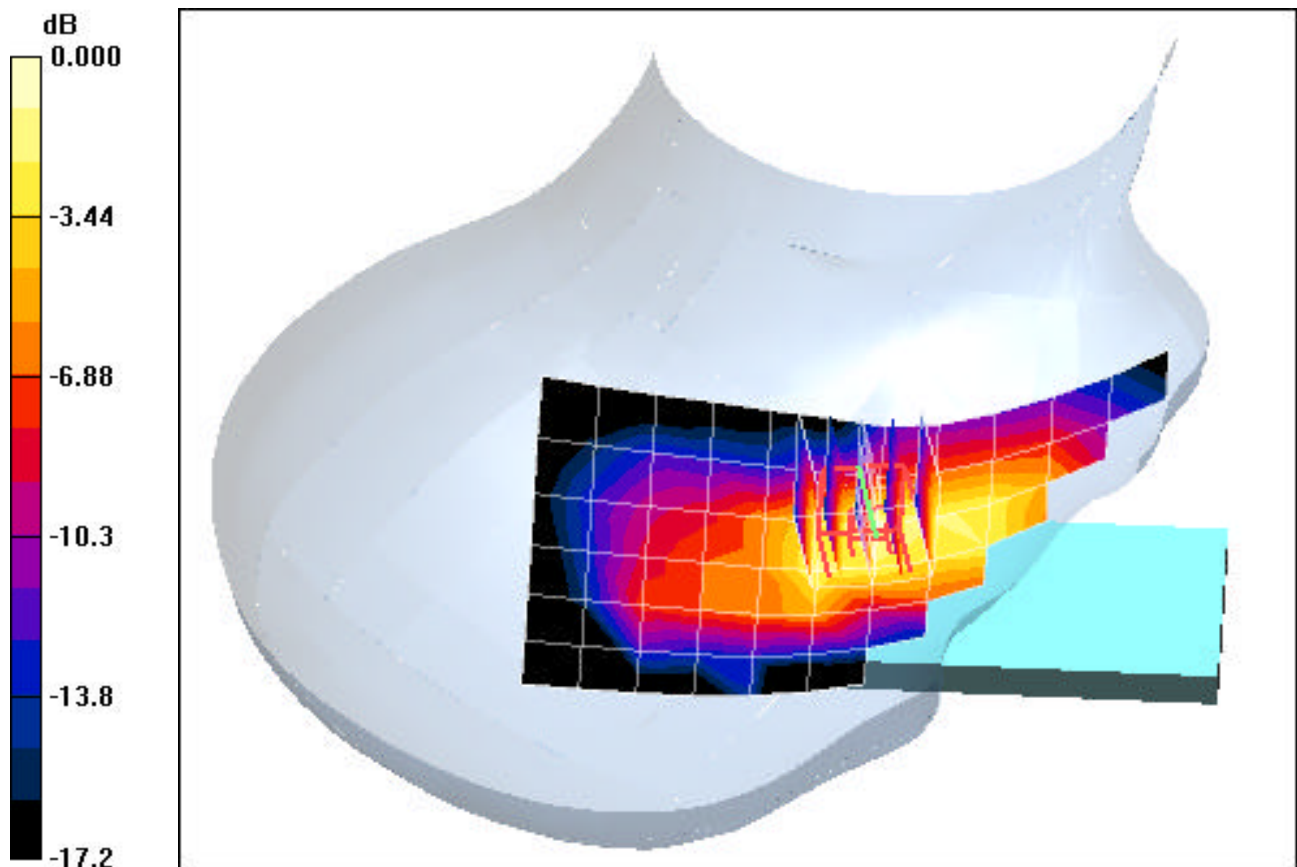
Area Scan (7x14x1): Measurement grid: dx=15mm, dy=15mm

Zoom Scan (5x5x7)/Cube 0: Measurement grid: dx=8mm, dy=8mm, dz=5mm

Reference Value = 8.58 V/m

Peak SAR (extrapolated) = 1.57 W/kg

SAR(1 g) = 0.791 mW/g; SAR(10 g) = 0.424 mW/g



0 dB = 1.05mW/g

PCTEST ENGINEERING LABORATORY, INC.

**DUT: LG LX360; Type: CDMA Dual Band Phone w/ Bluetooth + EvDO; Serial: SAR 1
Conducted Power: 24.5 dBm.**

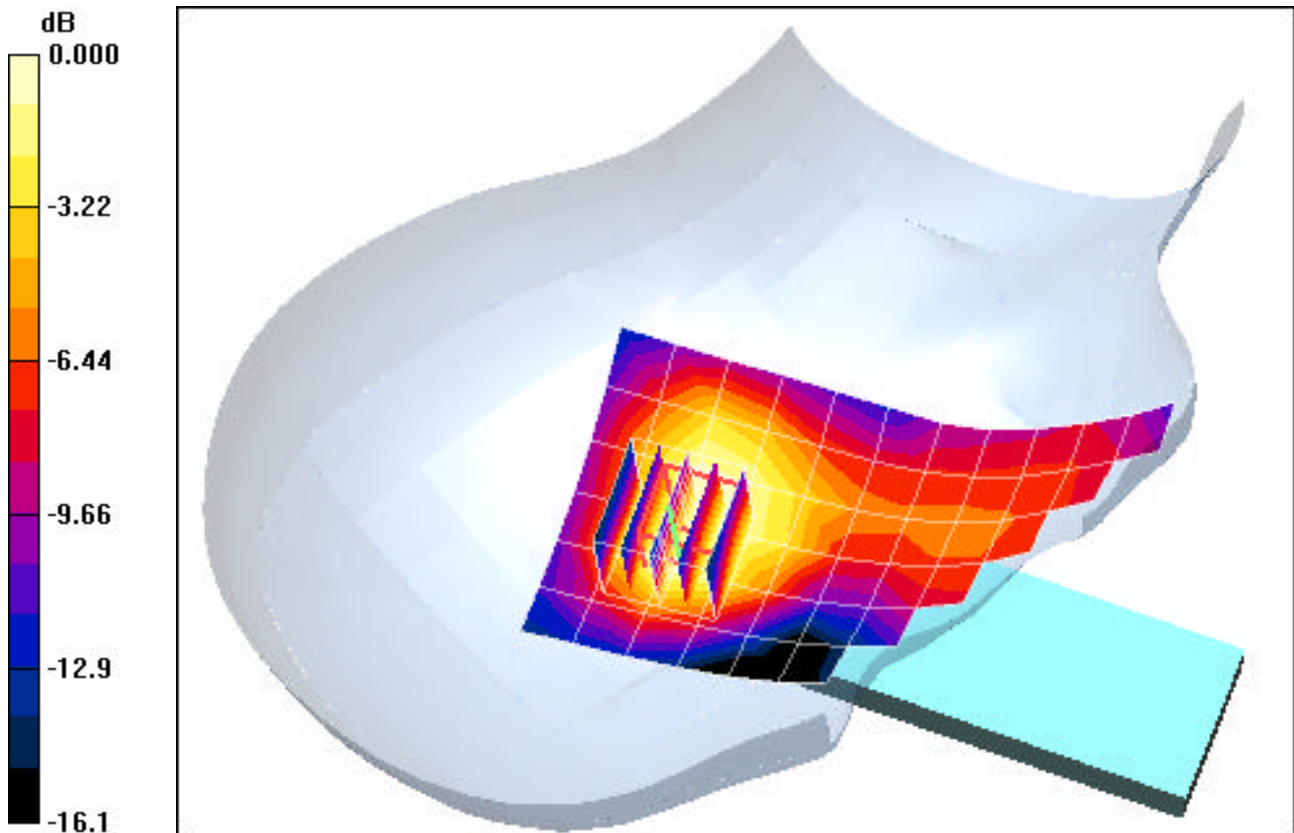
Communication System: PCS CDMA; Frequency: 1880 MHz; Duty Cycle: 1:1
Medium: 1900 Brain ($\sigma = 1.43$ mho/m, $\epsilon_r = 39.09$, $\rho = 1000$ kg/m³)
Phantom section: Right Section

Test Date: 12-12-2006; Ambient Temp: 23.3°C; Tissue Temp: 21.2°C

Probe: EX3DV4 - SN3561; ConvF(6.99, 6.99, 6.99); Calibrated: 11/23/2006
Sensor-Surface: 3mm (Mechanical Surface Detection)
Electronics: DAE3 Sn455; Calibrated: 10/16/2006
Phantom: SAM Main; Type: SAM 4.0; Serial: TP:1197
Measurement SW: DASY4, V4.7 Build 44; Postprocessing SW: SEMCAD, V1.8 Build 171

Mode: PCS, Right Head, Tilt, Ch.600, Standard Battery, Antenna Internal

Area Scan (7x14x1): Measurement grid: dx=15mm, dy=15mm
Zoom Scan (5x5x7)/Cube 0: Measurement grid: dx=8mm, dy=8mm, dz=5mm
Reference Value = 11.5 V/m
Peak SAR (extrapolated) = 0.398 W/kg
SAR(1 g) = 0.241 mW/g; SAR(10 g) = 0.149 mW/g



0 dB = 0.289mW/g

PCTEST ENGINEERING LABORATORY, INC.

**DUT: LG LX360; Type: CDMA Dual Band Phone w/ Bluetooth + EvDO; Serial: SAR 1
Conducted Power: 24.5 dBm.**

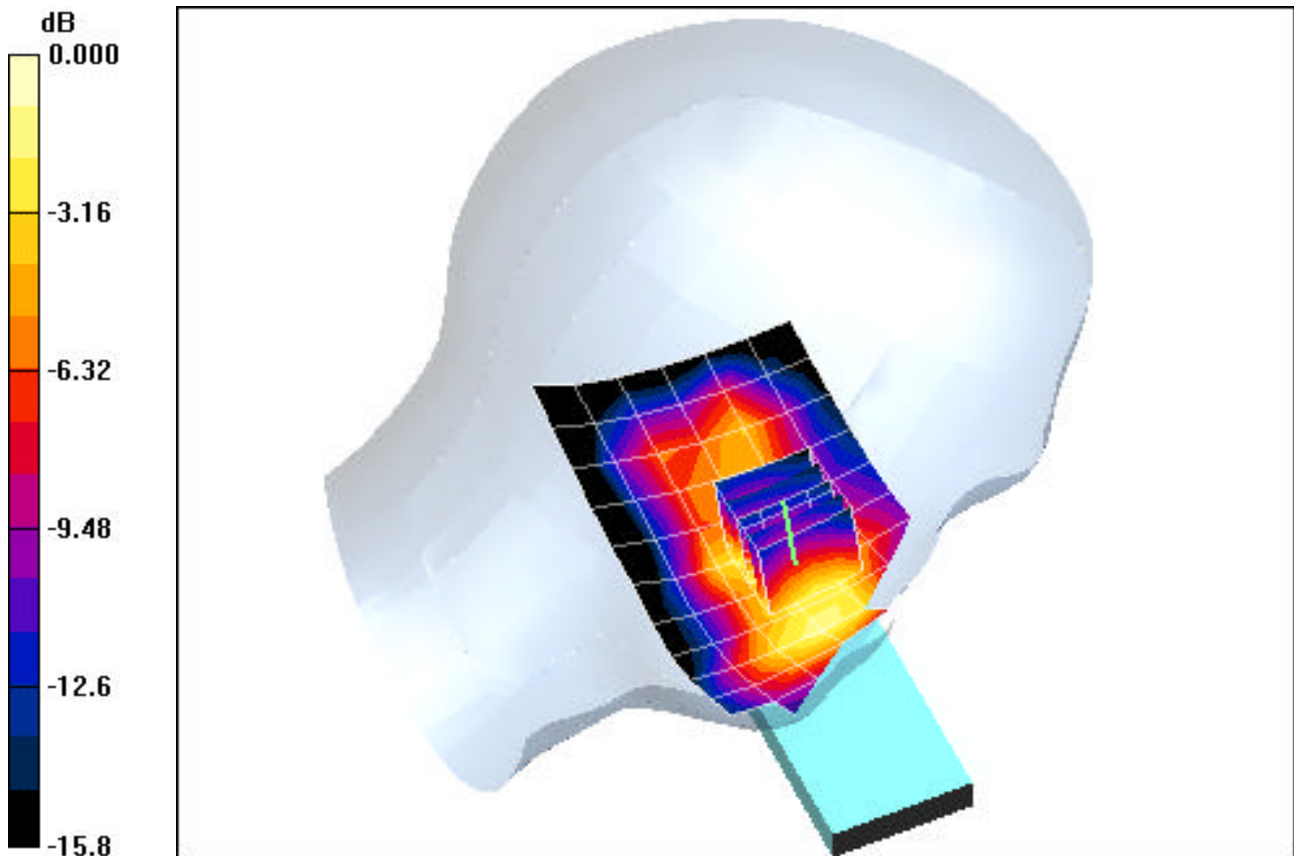
Communication System: PCS CDMA; Frequency: 1880 MHz; Duty Cycle: 1:1
Medium: 1900 Brain ($\sigma = 1.43$ mho/m, $\epsilon_r = 39.09$, $\rho = 1000$ kg/m³)
Phantom section: Left Section

Test Date: 12-12-2006; Ambient Temp: 23.3°C; Tissue Temp: 21.2°C

Probe: EX3DV4 - SN3561; ConvF(6.99, 6.99, 6.99); Calibrated: 11/23/2006
Sensor-Surface: 3mm (Mechanical Surface Detection)
Electronics: DAE3 Sn455; Calibrated: 10/16/2006
Phantom: SAM Main; Type: SAM 4.0; Serial: TP:1197
Measurement SW: DASY4, V4.7 Build 44; Postprocessing SW: SEMCAD, V1.8 Build 171

Mode: PCS, Left Head, Touch, Ch.600, Standard Battery, Antenna Internal

Area Scan (7x14x1): Measurement grid: dx=15mm, dy=15mm
Zoom Scan (5x5x7)/Cube 0: Measurement grid: dx=8mm, dy=8mm, dz=5mm
Reference Value = 9.49 V/m
Peak SAR (extrapolated) = 1.16 W/kg
SAR(1 g) = 0.637 mW/g; SAR(10 g) = 0.348 mW/g



0 dB = 0.795mW/g

PCTEST ENGINEERING LABORATORY, INC.

**DUT: LG LX360; Type: CDMA Dual Band Phone w/ Bluetooth + EvDO; Serial: SAR 1
Conducted Power: 24.5 dBm.**

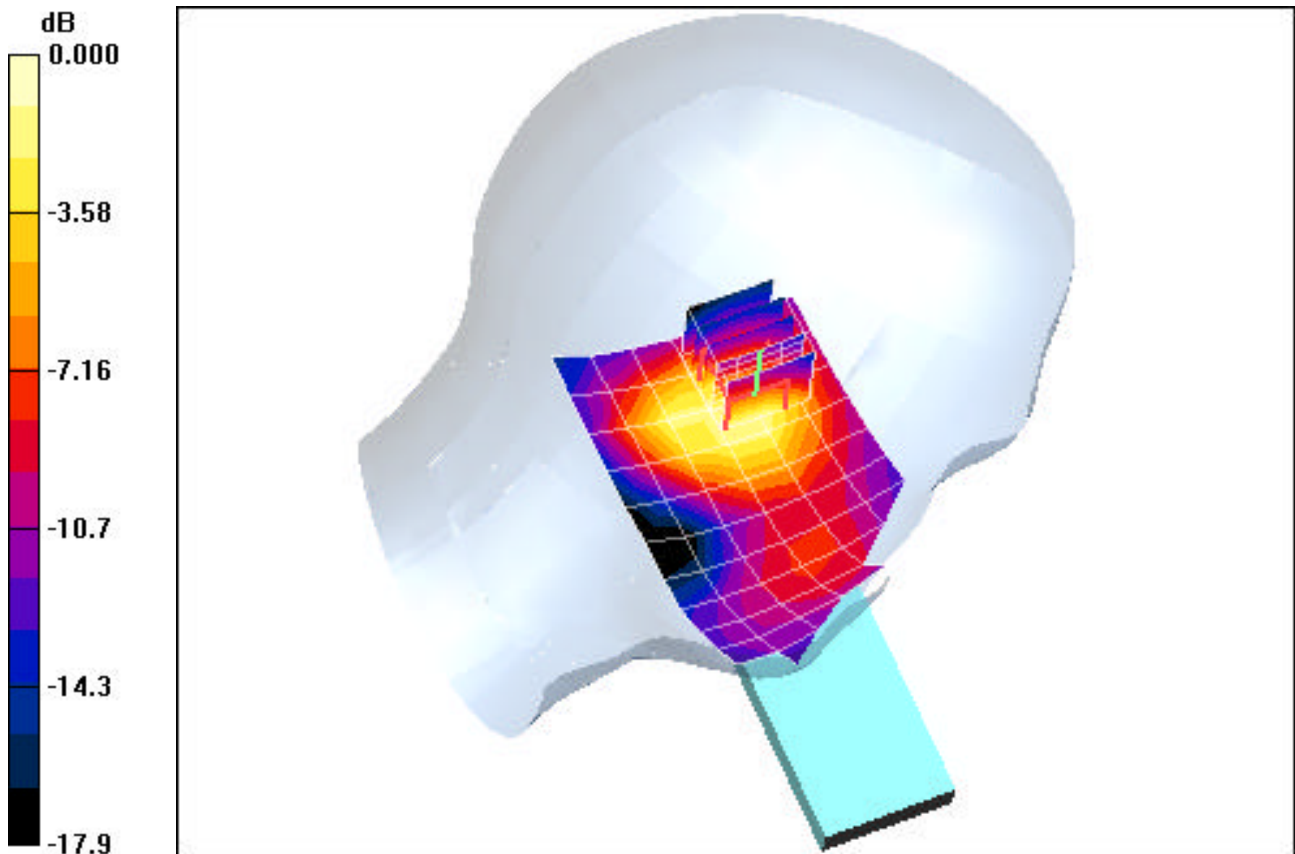
Communication System: PCS CDMA; Frequency: 1880 MHz; Duty Cycle: 1:1
Medium: 1900 Brain ($\sigma = 1.43$ mho/m, $\epsilon_r = 39.09$, $\rho = 1000$ kg/m³)
Phantom section: Left Section

Test Date: 12-12-2006; Ambient Temp: 23.3°C; Tissue Temp: 21.2°C

Probe: EX3DV4 - SN3561; ConvF(6.99, 6.99, 6.99); Calibrated: 11/23/2006
Sensor-Surface: 3mm (Mechanical Surface Detection)
Electronics: DAE3 Sn455; Calibrated: 10/16/2006
Phantom: SAM Main; Type: SAM 4.0; Serial: TP:1197
Measurement SW: DASY4, V4.7 Build 44; Postprocessing SW: SEMCAD, V1.8 Build 171

Mode: PCS, Left Head, Tilt, Ch.600, Standard Battery, Antenna Internal

Area Scan (7x14x1): Measurement grid: dx=15mm, dy=15mm
Zoom Scan (5x5x7)/Cube 0: Measurement grid: dx=8mm, dy=8mm, dz=5mm
Reference Value = 12.2 V/m
Peak SAR (extrapolated) = 0.530 W/kg
SAR(1 g) = 0.320 mW/g; SAR(10 g) = 0.186 mW/g



0 dB = 0.387mW/g

PCTEST ENGINEERING LABORATORY, INC.

**DUT: LG LX360; Type: CDMA Dual Band Phone w/ Bluetooth + EvDO; Serial: SAR 1
Conducted Power: 24.5 dBm.**

Communication System: Cellular CDMA; Frequency: 836.52 MHz; Duty Cycle: 1:1

Medium: 835 Muscle ($\sigma = 0.98$ mho/m, $\epsilon_r = 54.47$, $\rho = 1000$ kg/m³)

Phantom section: Flat Section; Space: 1.5 cm from DUT to Flat Phantom

Test Date: 12-13-2006; Ambient Temp: 23.5°C; Tissue Temp: 21.6°C

Probe: EX3DV4 - SN3561; ConvF(7.92, 7.92, 7.92); Calibrated: 11/23/2006

Sensor-Surface: 3mm (Mechanical Surface Detection)

Electronics: DAE3 Sn455; Calibrated: 10/16/2006

Phantom: SAM Main; Type: SAM 4.0; Serial: TP:1197

Measurement SW: DASY4, V4.7 Build 44; Postprocessing SW: SEMCAD, V1.8 Build 171

Mode: CDMA, Body, No beltclip, Ch.384, Standard Battery, Antenna Internal

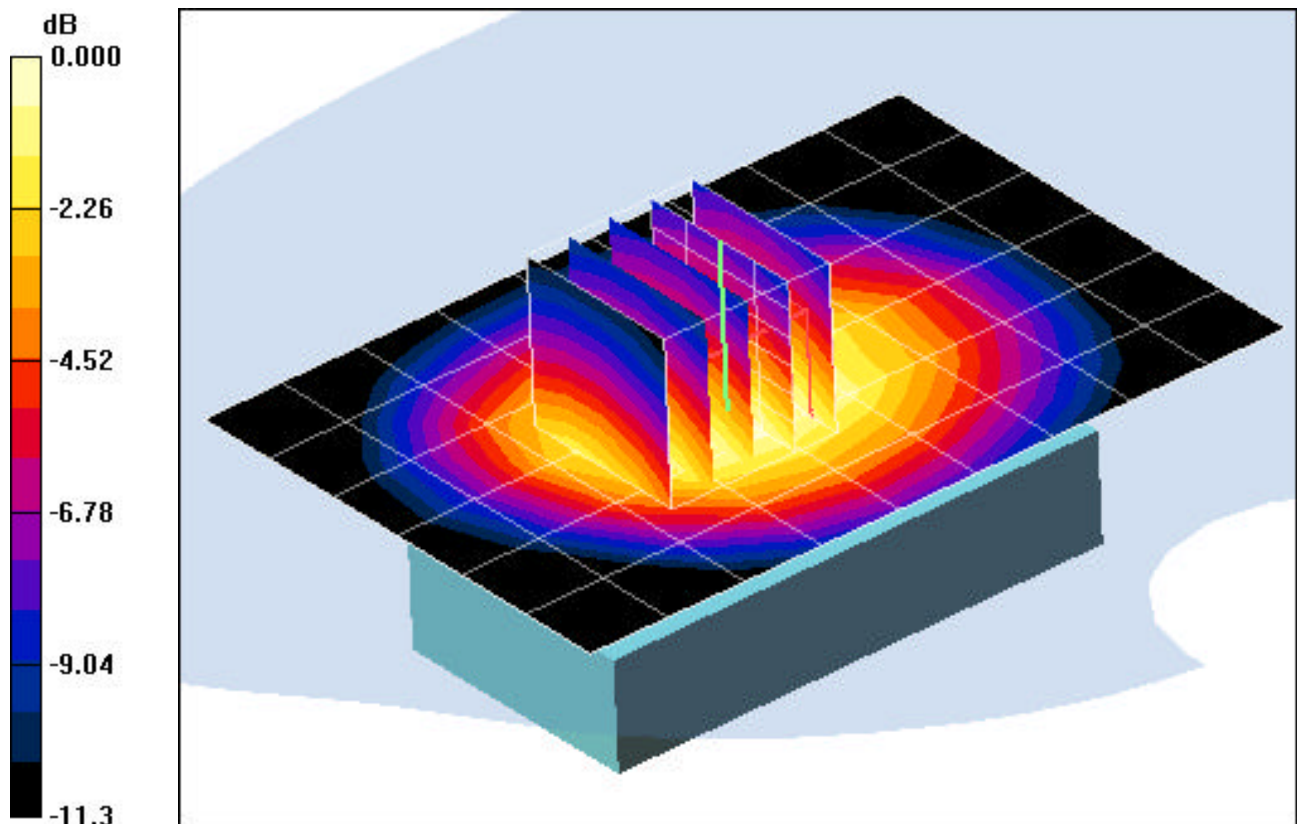
Area Scan (7x10x1): Measurement grid: dx=15mm, dy=15mm

Zoom Scan (5x5x7)/Cube 0: Measurement grid: dx=8mm, dy=8mm, dz=5mm

Reference Value = 20.4 V/m

Peak SAR (extrapolated) = 1.01 W/kg

SAR(1 g) = 0.762 mW/g; SAR(10 g) = 0.534 mW/g



0 dB = 0.863mW/g

PCTEST ENGINEERING LABORATORY, INC.

**DUT: LG LX360; Type: CDMA Dual Band Phone w/ Bluetooth + EvDO; Serial: SAR 1
Conducted Power: 25.8 dBm.**

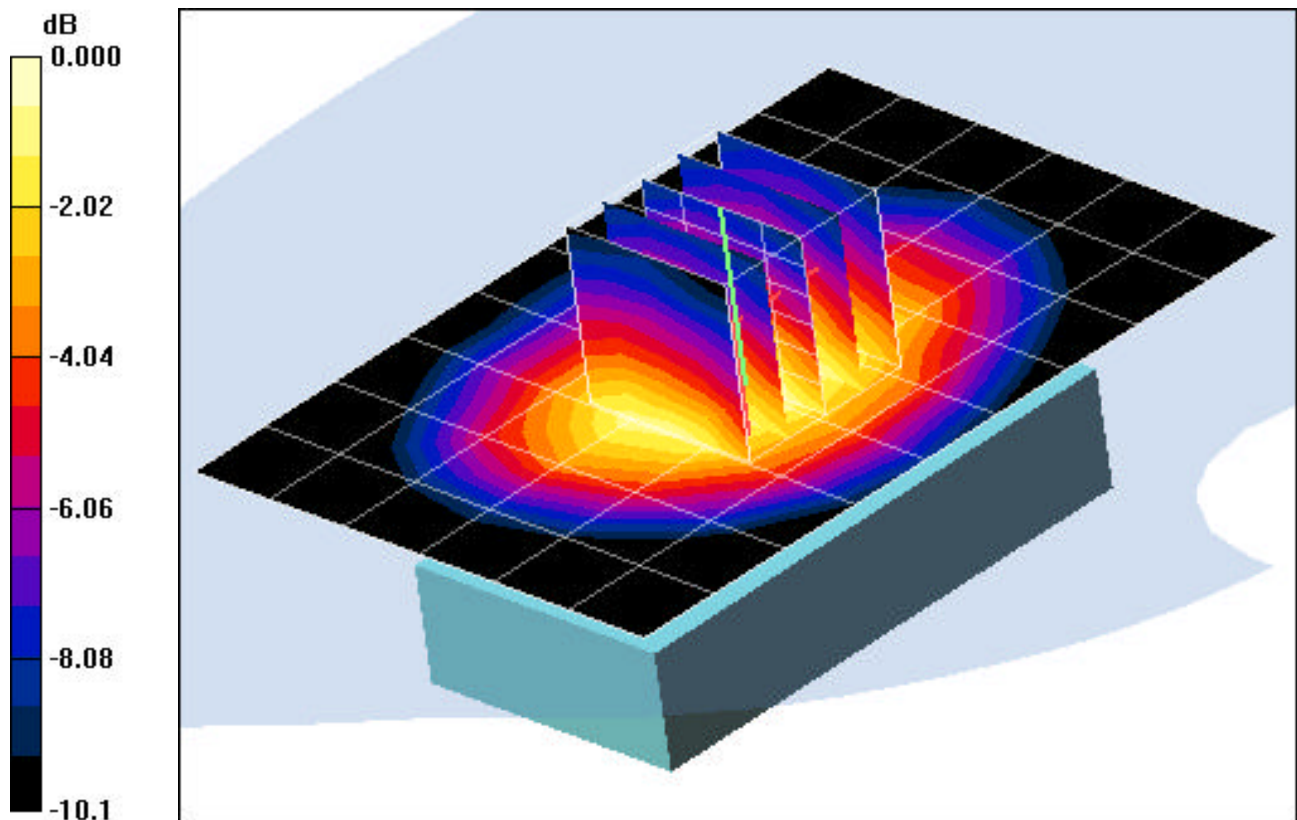
Communication System: Cellular CDMA EvDO; Frequency: 824.7 MHz; Duty Cycle: 1:1
Medium: 835 Muscle ($\sigma = 0.98$ mho/m, $\epsilon_r = 54.47$, $\rho = 1000$ kg/m³)
Phantom section: Flat Section

Test Date: 12-13-2006; Ambient Temp: 23.5°C; Tissue Temp: 21.6°C

Probe: EX3DV4 - SN3561; ConvF(7.92, 7.92, 7.92); Calibrated: 11/23/2006
Sensor-Surface: 3mm (Mechanical Surface Detection)
Electronics: DAE3 Sn455; Calibrated: 10/16/2006
Phantom: SAM Main; Type: SAM 4.0; Serial: TP:1197
Measurement SW: DASY4, V4.7 Build 44; Postprocessing SW: SEMCAD, V1.8 Build 171

Mode: CDMA EvDO-FTAP, Body, No Beltclip, Ch.1013, Standard Battery

Area Scan (7x10x1): Measurement grid: dx=15mm, dy=15mm
Zoom Scan (5x5x7)/Cube 0: Measurement grid: dx=8mm, dy=8mm, dz=5mm
Reference Value = 25.2 V/m
Peak SAR (extrapolated) = 1.55 W/kg
SAR(1 g) = 1.08 mW/g; SAR(10 g) = 0.759 mW/g



0 dB = 1.28mW/g

PCTEST ENGINEERING LABORATORY, INC.

**DUT: LG LX360; Type: CDMA Dual Band Phone w/ Bluetooth + EvDO; Serial: SAR 1
Conducted Power: 24.5 dBm.**

Communication System: PCS CDMA; Frequency: 1880 MHz; Duty Cycle: 1:1

Medium: 1900 Muscle ($\sigma = 1.56$ mho/m, $\epsilon_r = 54.15$, $\rho = 1000$ kg/m³)

Phantom section: Flat Section; Space: 1.5 cm from DUT to Flat Phantom

Test Date: 12-12-2006; Ambient Temp: 22.3°C; Tissue Temp: 21.2°C

Probe: EX3DV4 - SN3561; ConvF(6.47, 6.47, 6.47); Calibrated: 11/23/2006

Sensor-Surface: 3mm (Mechanical Surface Detection)

Electronics: DAE3 Sn455; Calibrated: 10/16/2006

Phantom: SAM Sub; Type: SAM 4.0; Serial: TP:1357

Measurement SW: DASY4, V4.7 Build 44; Postprocessing SW: SEMCAD, V1.8 Build 171

Mode: PCS, Body, No Beltclip, Ch.600, Standard Battery, Antenna Internal

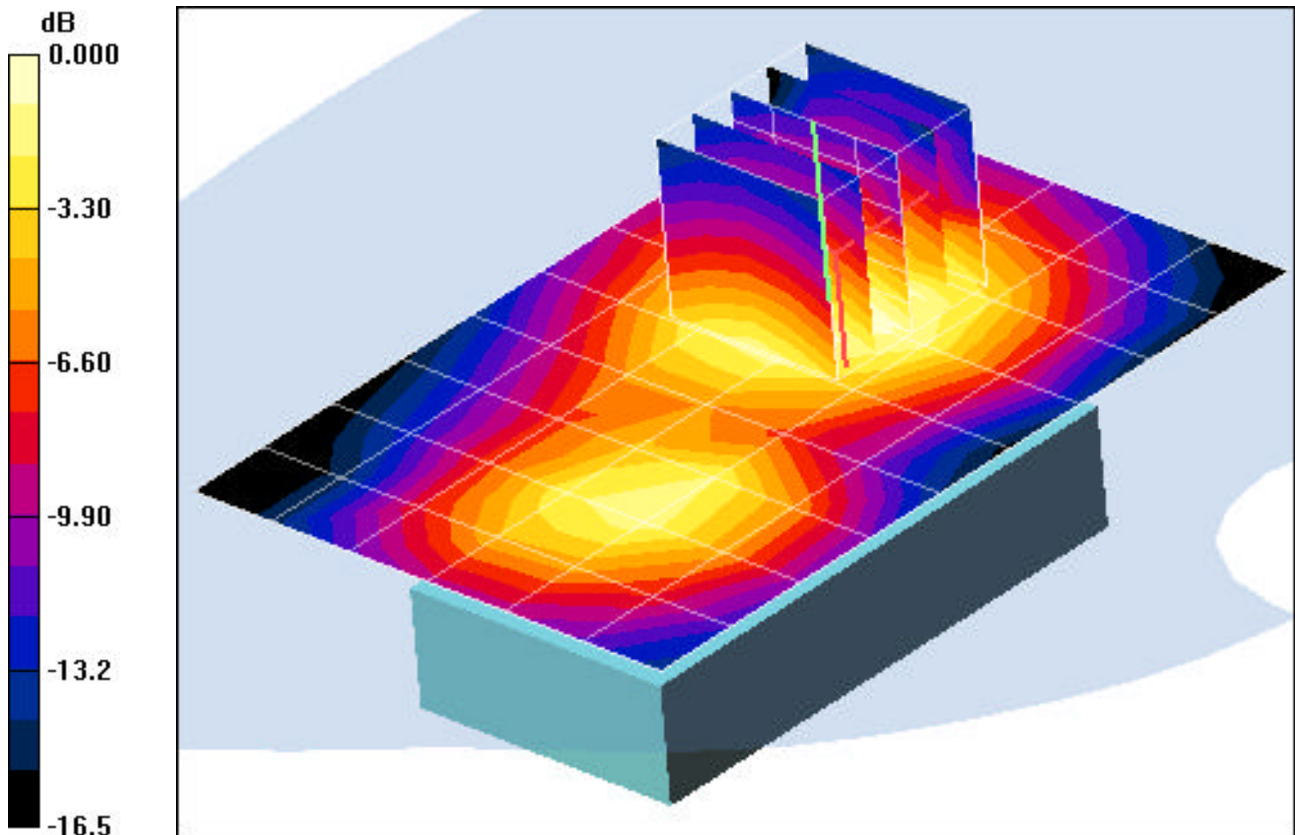
Area Scan (7x10x1): Measurement grid: dx=15mm, dy=15mm

Zoom Scan (5x5x7)/Cube 0: Measurement grid: dx=8mm, dy=8mm, dz=5mm

Reference Value = 17.8V/m

Peak SAR (extrapolated) = 0.671 W/kg

SAR(1 g) = 0.426 mW/g; SAR(10 g) = 0.257 mW/g



0 dB = 0.507mW/g

PCTEST ENGINEERING LABORATORY, INC.

**DUT: LG LX360; Type: CDMA Dual Band Phone w/ Bluetooth + EvDO; Serial: SAR 1
Conducted Power: 25.3 dBm.**

Communication System: PCS EvDO; Frequency: 1880 MHz; Duty Cycle: 1:1

Medium: 1900 Muscle ($\sigma = 1.56$ mho/m, $\epsilon_r = 54.15$, $\rho = 1000$ kg/m³)

Phantom section: Flat Section; Space: 1.5 cm from DUT to Flat Phantom

Test Date: 12-12-2006; Ambient Temp: 22.3°C; Tissue Temp: 21.2°C

Probe: EX3DV4 - SN3561; ConvF(6.47, 6.47, 6.47); Calibrated: 11/23/2006

Sensor-Surface: 3mm (Mechanical Surface Detection)

Electronics: DAE3 Sn455; Calibrated: 10/16/2006

Phantom: SAM Sub; Type: SAM 4.0; Serial: TP:1357

Measurement SW: DASY4, V4.7 Build 44; Postprocessing SW: SEMCAD, V1.8 Build 171

Mode: PCS EvDO-FTAP, Body, No beltclip, Ch.600, Standard Battery

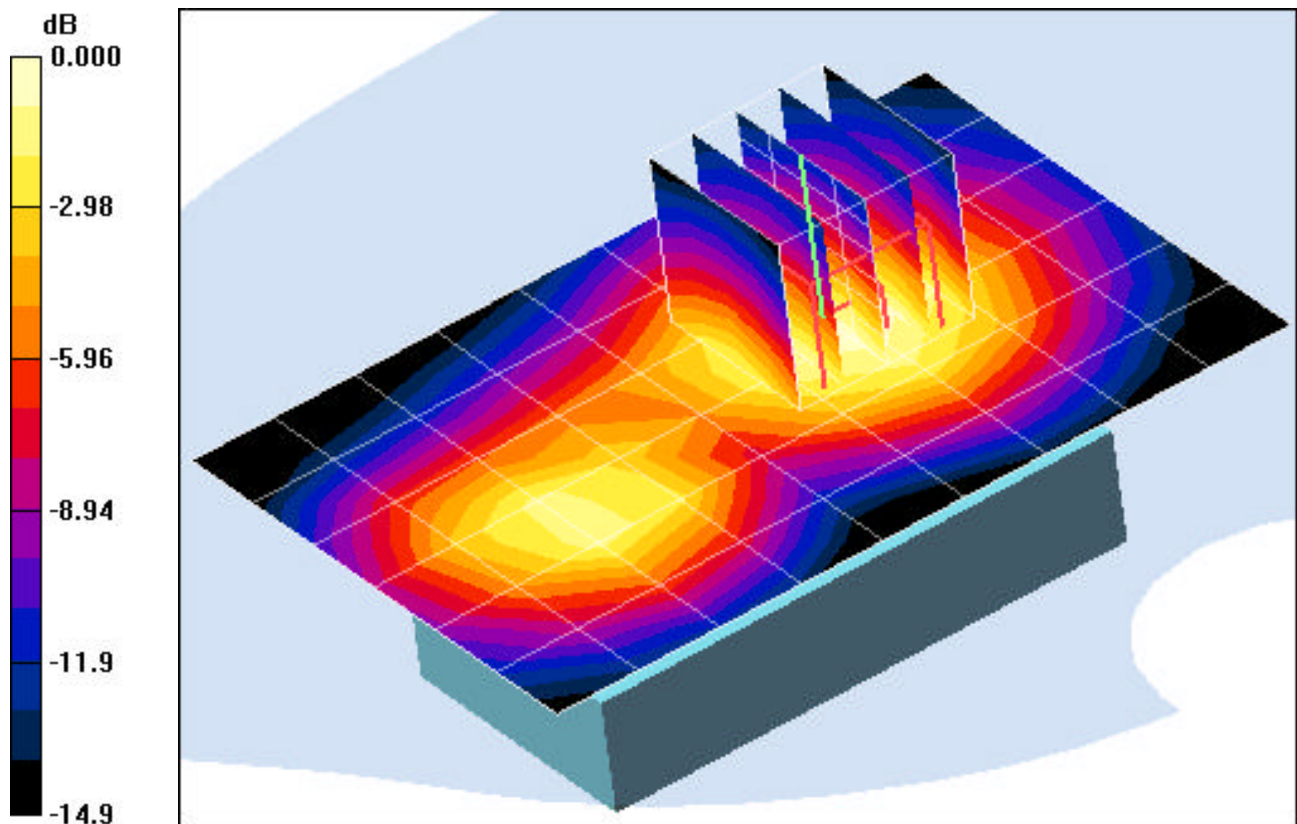
Area Scan (7x10x1): Measurement grid: dx=15mm, dy=15mm

Zoom Scan (5x5x7)/Cube 0: Measurement grid: dx=8mm, dy=8mm, dz=5mm

Reference Value = 20.1 V/m

Peak SAR (extrapolated) = 0.876 W/kg

SAR(1 g) = 0.562 mW/g; SAR(10 g) = 0.337 mW/g



0 dB = 0.663mW/g

PCTEST ENGINEERING LABORATORY, INC.

**DUT: LGE LX360; Type: CDMA Dual Band Phone w/Bluetooth + Evdo; Serial: SAR 1
Conducted Power: 24.5 dBm.**

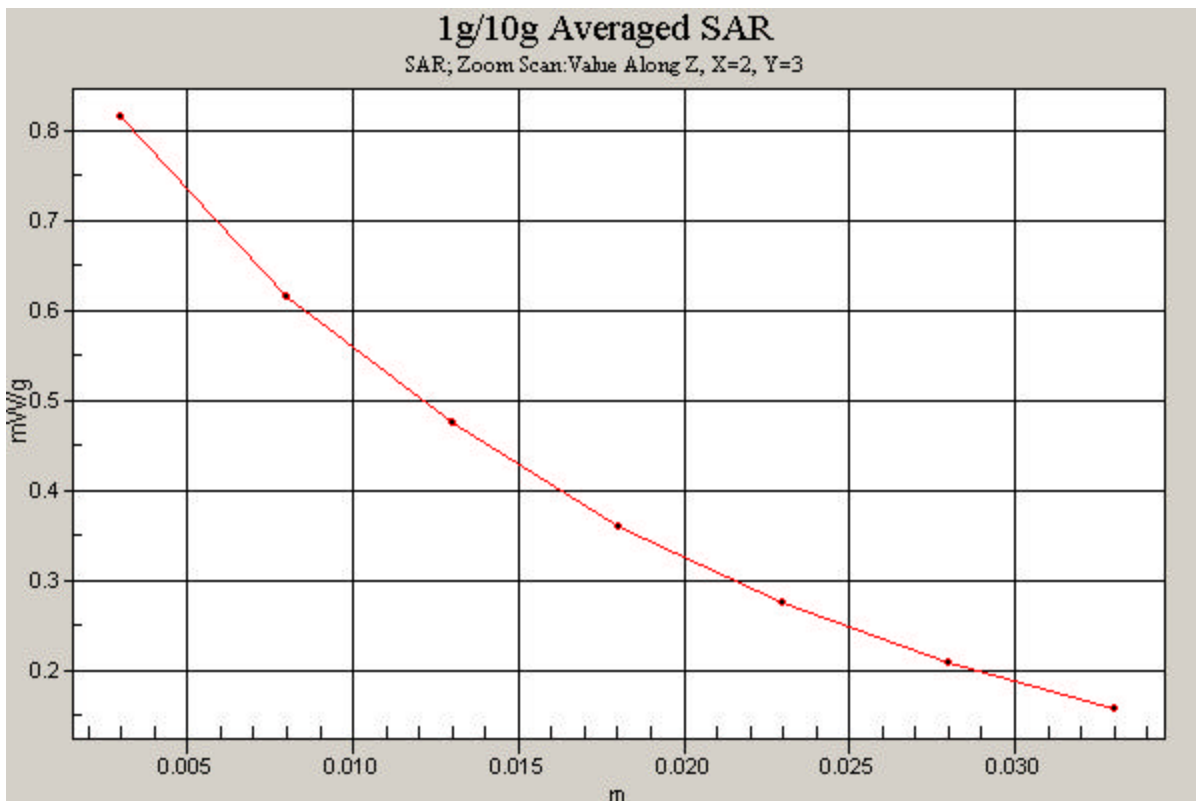
Communication System: Cellular CDMA; Frequency: 836.52 MHz; Duty Cycle: 1:1
Medium: 835 Brain ($\sigma = 0.90$ mho/m, $\epsilon_r = 40.53$, $\rho = 1000$ kg/m³)
Phantom section: Right Section

Test Date: 12-11-2006; Ambient Temp: 23.4°C; Tissue Temp: 21.5°C

Probe: EX3DV4 - SN3561; ConvF(7.94, 7.94, 7.94); Calibrated: 11/23/2006
Sensor-Surface: 3mm (Mechanical Surface Detection)
Electronics: DAE3 Sn455; Calibrated: 10/16/2006
Phantom: SAM Main; Type: SAM 4.0; Serial: TP:1197
Measurement SW: DASY4, V4.7 Build 44; Postprocessing SW: SEMCAD, V1.8 Build 171

Mode: CDMA, Right Head, Touch, Ch.384, Standard Battery, Antenna Internal

Area Scan (7x14x1): Measurement grid: dx=15mm, dy=15mm
Zoom Scan (5x5x7)/Cube 0: Measurement grid: dx=8mm, dy=8mm, dz=5mm
Reference Value = 3.87 V/m
Peak SAR (extrapolated) = 0.997 W/kg
SAR(1 g) = 0.740 mW/g; SAR(10 g) = 0.493 mW/g
Maximum value of SAR (measured) = 0.814 mW/g



PCTEST ENGINEERING LABORATORY, INC.

**DUT: LG LX360; Type: CDMA Dual Band Phone w/ Bluetooth + EvDO; Serial: SAR 1
Conducted Power: 24.5 dBm.**

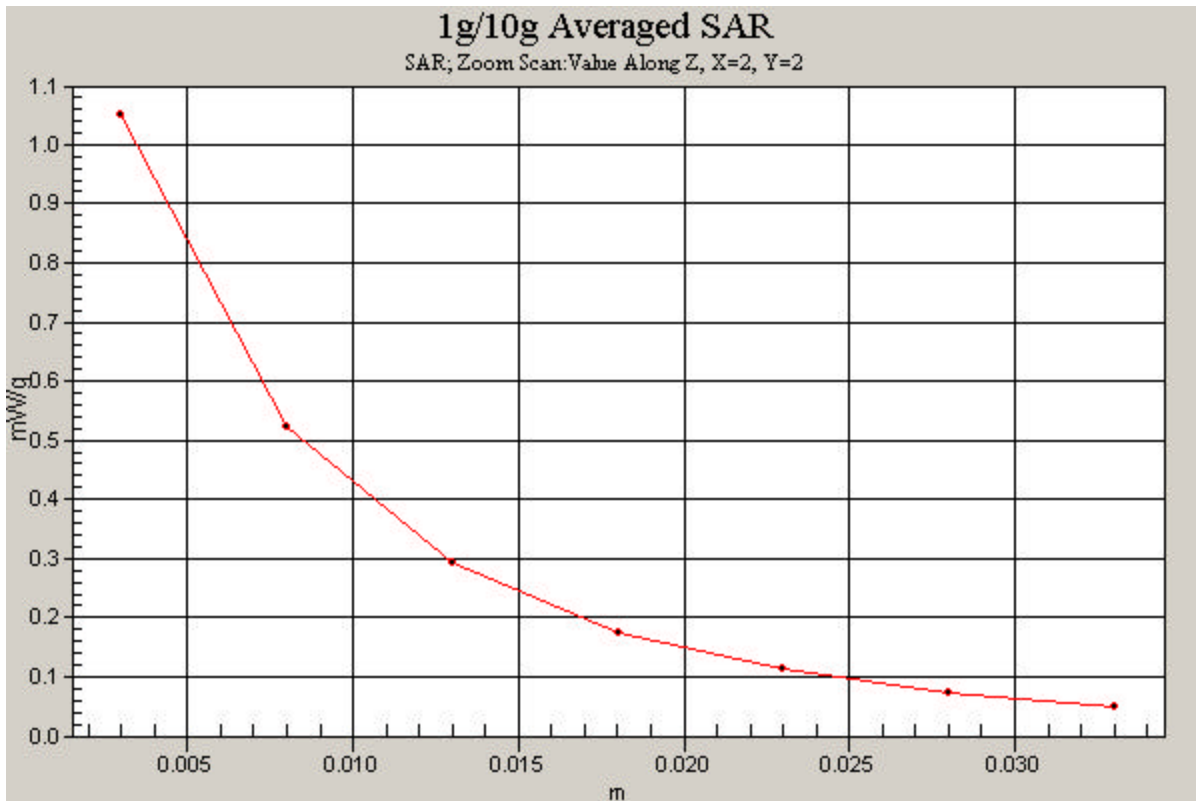
Communication System: PCS CDMA; Frequency: 1880 MHz; Duty Cycle: 1:1
Medium: 1900 Brain ($\sigma = 1.43$ mho/m, $\epsilon_r = 39.09$, $\rho = 1000$ kg/m³)
Phantom section: Right Section

Test Date: 12-12-2006; Ambient Temp: 22.3°C; Tissue Temp: 21.2°C

Probe: EX3DV4 - SN3561; ConvF(6.99, 6.99, 6.99); Calibrated: 11/23/2006
Sensor-Surface: 3mm (Mechanical Surface Detection)
Electronics: DAE3 Sn455; Calibrated: 10/16/2006
Phantom: SAM Main; Type: SAM 4.0; Serial: TP:1197
Measurement SW: DASY4, V4.7 Build 44; Postprocessing SW: SEMCAD, V1.8 Build 171

Mode: PCS, Right Head, Touch, Ch.600, Standard Battery, Antenna Internal

Area Scan (7x14x1): Measurement grid: dx=15mm, dy=15mm
Zoom Scan (5x5x7)/Cube 0: Measurement grid: dx=8mm, dy=8mm, dz=5mm
Reference Value = 8.58 V/m
Peak SAR (extrapolated) = 1.57 W/kg
SAR(1 g) = 0.791 mW/g; SAR(10 g) = 0.424 mW/g



PCTEST ENGINEERING LABORATORY, INC.

**DUT: LG LX360; Type: CDMA Dual Band Phone w/ Bluetooth + EvDO; Serial: SAR 1
Conducted Power: 25.8 dBm.**

Communication System: Cellular CDMA; Frequency: 824.7 MHz; Duty Cycle: 1:1

Medium: 835 Muscle ($\sigma = 0.98$ mho/m, $\epsilon_r = 54.47$, $\rho = 1000$ kg/m³)

Phantom section: Flat Section; Space: 1.5 cm from DUT to Flat Phantom

Test Date: 12-13-2006; Ambient Temp: 23.5°C; Tissue Temp: 21.6°C

Probe: EX3DV4 - SN3561; ConvF(7.92, 7.92, 7.92); Calibrated: 11/23/2006

Sensor-Surface: 3mm (Mechanical Surface Detection)

Electronics: DAE3 Sn455; Calibrated: 10/16/2006

Phantom: SAM Main; Type: SAM 4.0; Serial: TP:1197

Measurement SW: DASY4, V4.7 Build 44; Postprocessing SW: SEMCAD, V1.8 Build 171

Mode: CDMA EvDO-FTAP, Body, No Beltclip, Ch.384, Standard Battery

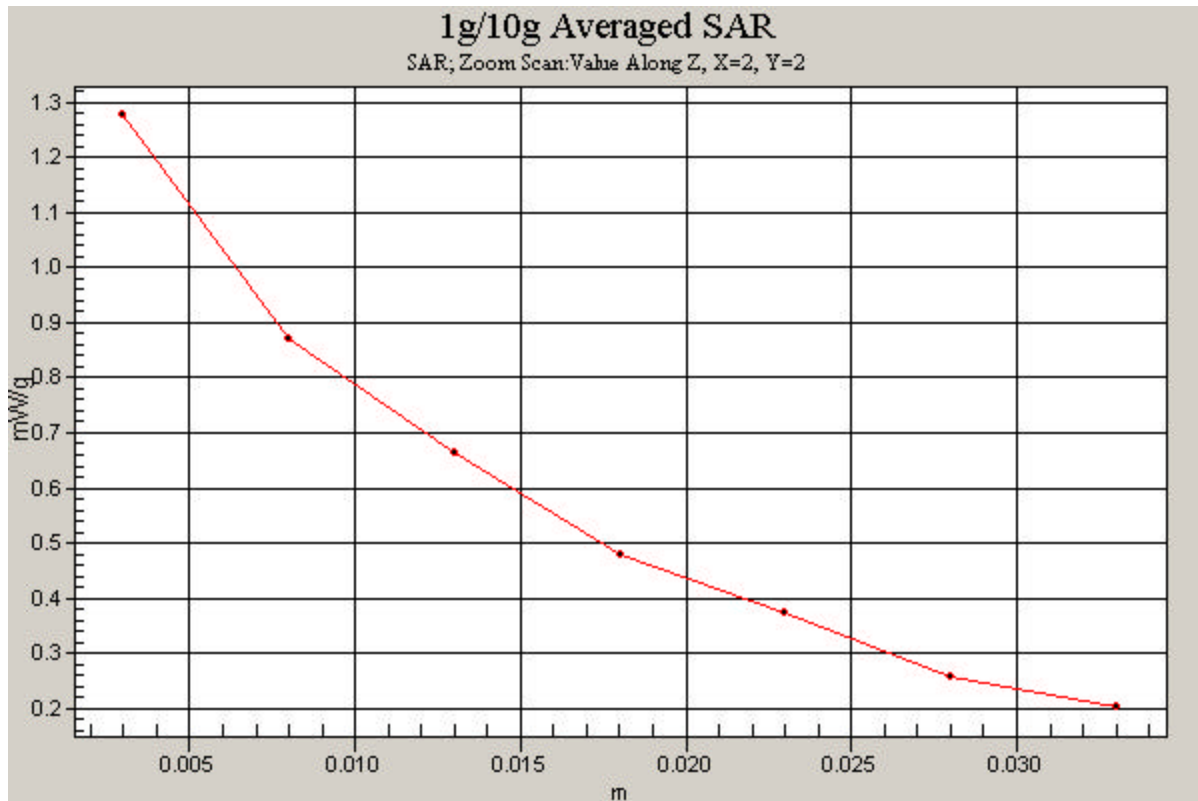
Area Scan (7x10x1): Measurement grid: dx=15mm, dy=15mm

Zoom Scan (5x5x7)/Cube 0: Measurement grid: dx=8mm, dy=8mm, dz=5mm

Reference Value = 25.2 V/m

Peak SAR (extrapolated) = 1.55 W/kg

SAR(1 g) = 1.08 mW/g; SAR(10 g) = 0.759 mW/g



PCTEST ENGINEERING LABORATORY, INC.

**DUT: LG LX360; Type: CDMA Dual Band Phone w/ Bluetooth + EvDO; Serial: SAR 1
Conducted Power: 25.3 dBm.**

Communication System: PCS EvDO; Frequency: 1880 MHz; Duty Cycle: 1:1
Medium: 1900 Muscle ($\sigma = 1.56$ mho/m, $\epsilon_r = 54.15$, $\rho = 1000$ kg/m³)
Phantom section: Flat Section; Space: 1.5 cm from DUT to Flat Phantom

Test Date: 12-12-2006; Ambient Temp: 22.3°C; Tissue Temp: 21.2°C

Probe: EX3DV4 - SN3561; ConvF(6.47, 6.47, 6.47); Calibrated: 11/23/2006
Sensor-Surface: 3mm (Mechanical Surface Detection)
Electronics: DAE3 Sn455; Calibrated: 10/16/2006
Phantom: SAM Sub; Type: SAM 4.0; Serial: TP:1357
Measurement SW: DASY4, V4.7 Build 44; Postprocessing SW: SEMCAD, V1.8 Build 171

Mode: PCS EvDO-FTAP, Body, No Beltclip, Ch.600, Standard Battery

Area Scan (7x10x1): Measurement grid: dx=15mm, dy=15mm
Zoom Scan (5x5x7)/Cube 0: Measurement grid: dx=8mm, dy=8mm, dz=5mm
Reference Value = 20.1 V/m
Peak SAR (extrapolated) = 0.876 W/kg
SAR(1 g) = 0.562 mW/g; SAR(10 g) = 0.337 mW/g

