





© 2002 PCTEST Lab

LGE FCC ID: BELSTD400 (Model: LST-D400)
Dual-Band CDMA Wireless Local Loop Terminal



© 2002 PCTEST Lab

LGE FCC ID: BELSTD400 (Model: LST-D400)
Dual-Band CDMA Wireless Local Loop Terminal





LG Electronics Inc.

CDMA FIXED WIRELESS TERMINAL

Model :LST-D400(F)



FCC ID : BEJLSTD400
Tested To Comply
With FCC Standards
FOR HOME OR OFFICE USE

ESN DEC

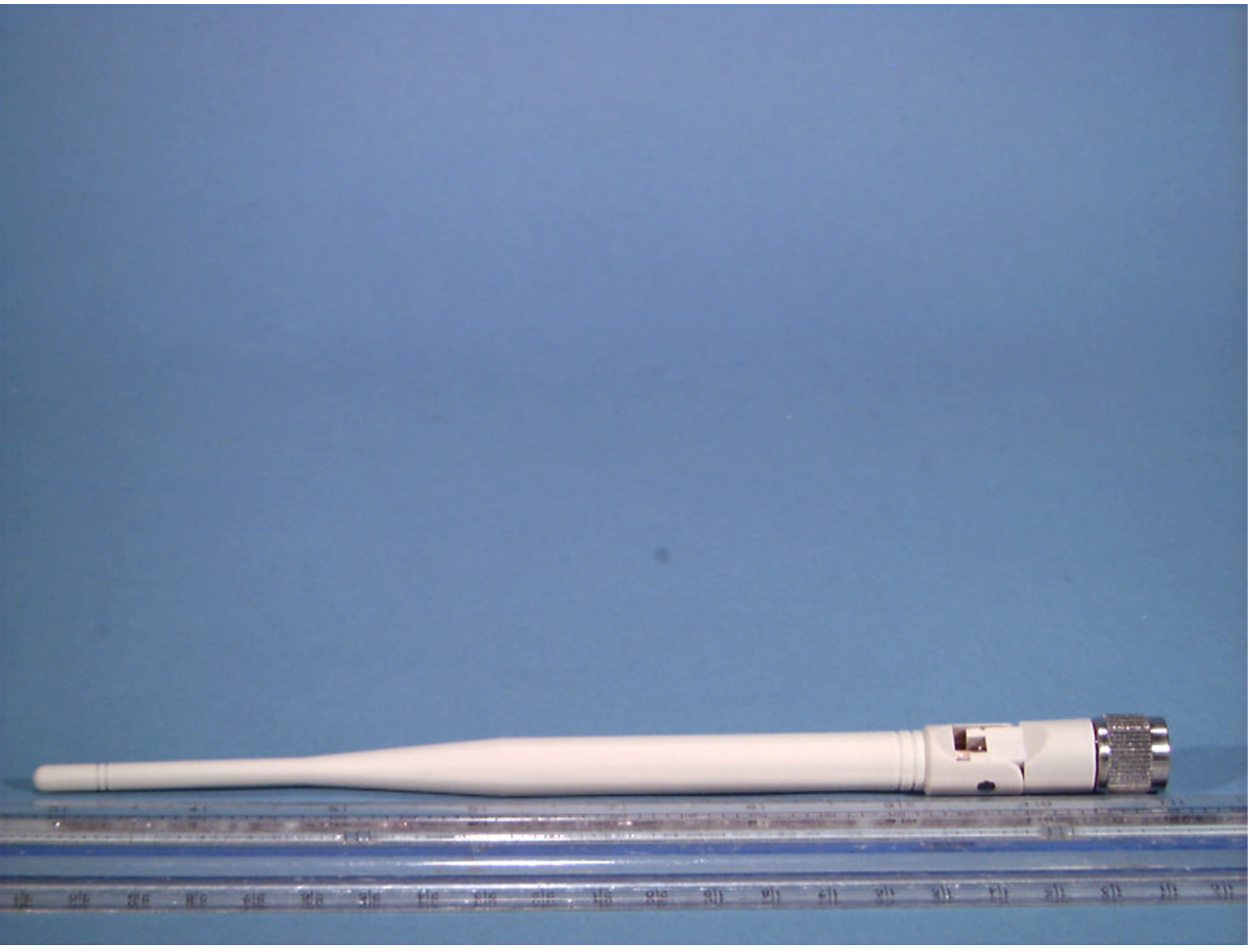


ESN HEX



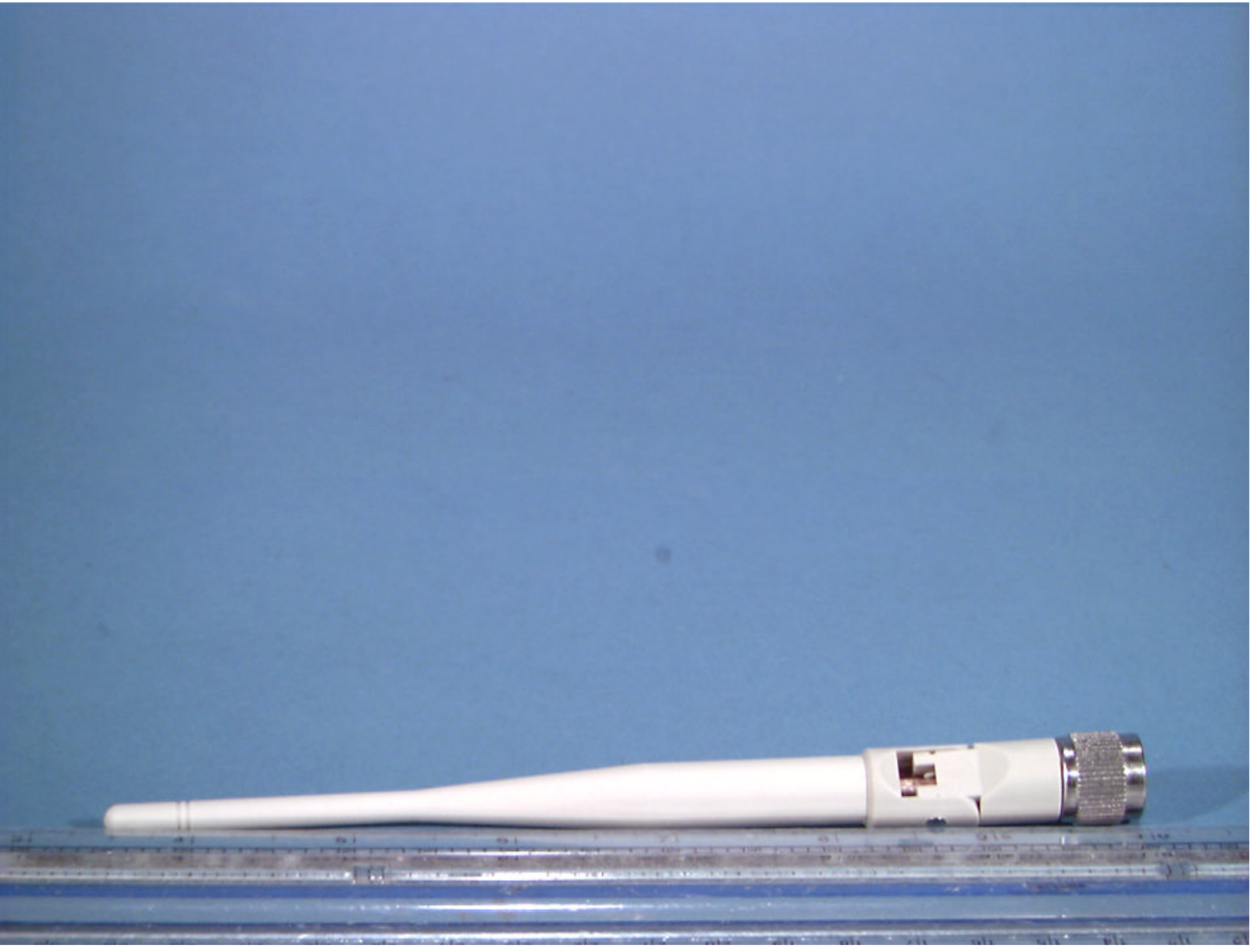
PN:

Made in Korea



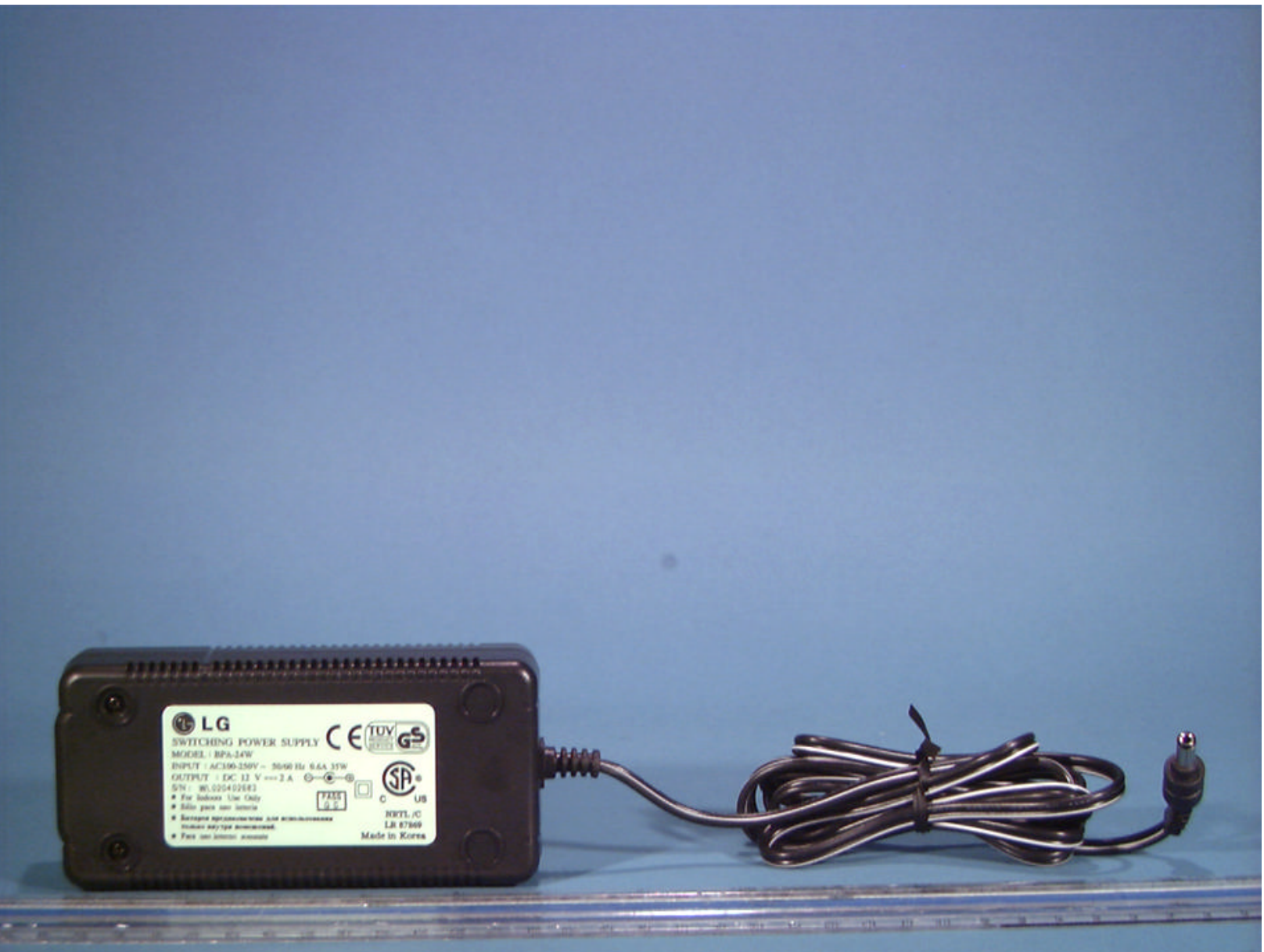
© 2002 PCTEST Lab

LGE FCC ID: BELSTD400 (Model: LST-D400)
Dual-Band CDMA Wireless Local Loop Terminal



© 2002 PCTEST Lab

LGE FCC ID: BELSTD400 (Model: LST-D400)
Dual-Band CDMA Wireless Local Loop Terminal

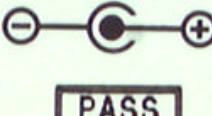




SWITCHING POWER SUPPLY

MODEL : BPA-24W

INPUT : AC100-250V ~ 50/60 Hz 0.6A 35W

OUTPUT : DC 12 V --- 2 A 

S/N: WL020402683

- * For Indoors Use Only
- * Sólo para uso interior
- * Батарея предназначена для использования только внутри помещений.
- * Para uso interno solamente

PASS
Q C



NRTL /C
LR 87869

Made in Korea