

SAR Data Report 02092613

Start : 26-Sep-02 04:09:54 pm
End : 26-Sep-02 04:17:17 pm
Code Version : 4.08
Robot Version: 4.08

Product Data:

Type : LGE
Model Number : LST-D400
Serial Number : 1
Frequency : 835.89 MHz
Transmit Pwr : 0.250 W
Antenna Type : Helical
Antenna Posn. : Fixed

Measurement Data:

Phantom Name : SAM FLAT2
Phantom Type : Uniphantom
Tissue Type : Muscle
Tissue Dielectric : 56.200
Tissue Conductivity : 0.990
Tissue Density : 1.000
Robot Name : CRS

Probe Data:

Probe Name : PCT002
Probe Type : E Fld Triangle
Frequency : 1900 MHz
Tissue Type : Muscle
Calibrated Dielectric : 53.900
Calibrated Conductivity : 1.480
Calibrated Density : 1.000
Probe Offset : 2.400 mm
Conversion Factor : 4.500
Probe Sensitivity : 3.000 2.995 2.653 mV/(mW/cm^2)
Amplifier Gains : 20.00 20.00 20.00

Sample:

Rate: 6000 Samples/Sec
Count: 100 Samples
NIDAQ Gain: 5

Comments:

CDMA Mode CH-363
Body
CF=1; Amb. Temp= 22.2 'C; Liq. Temp=22.0 'C

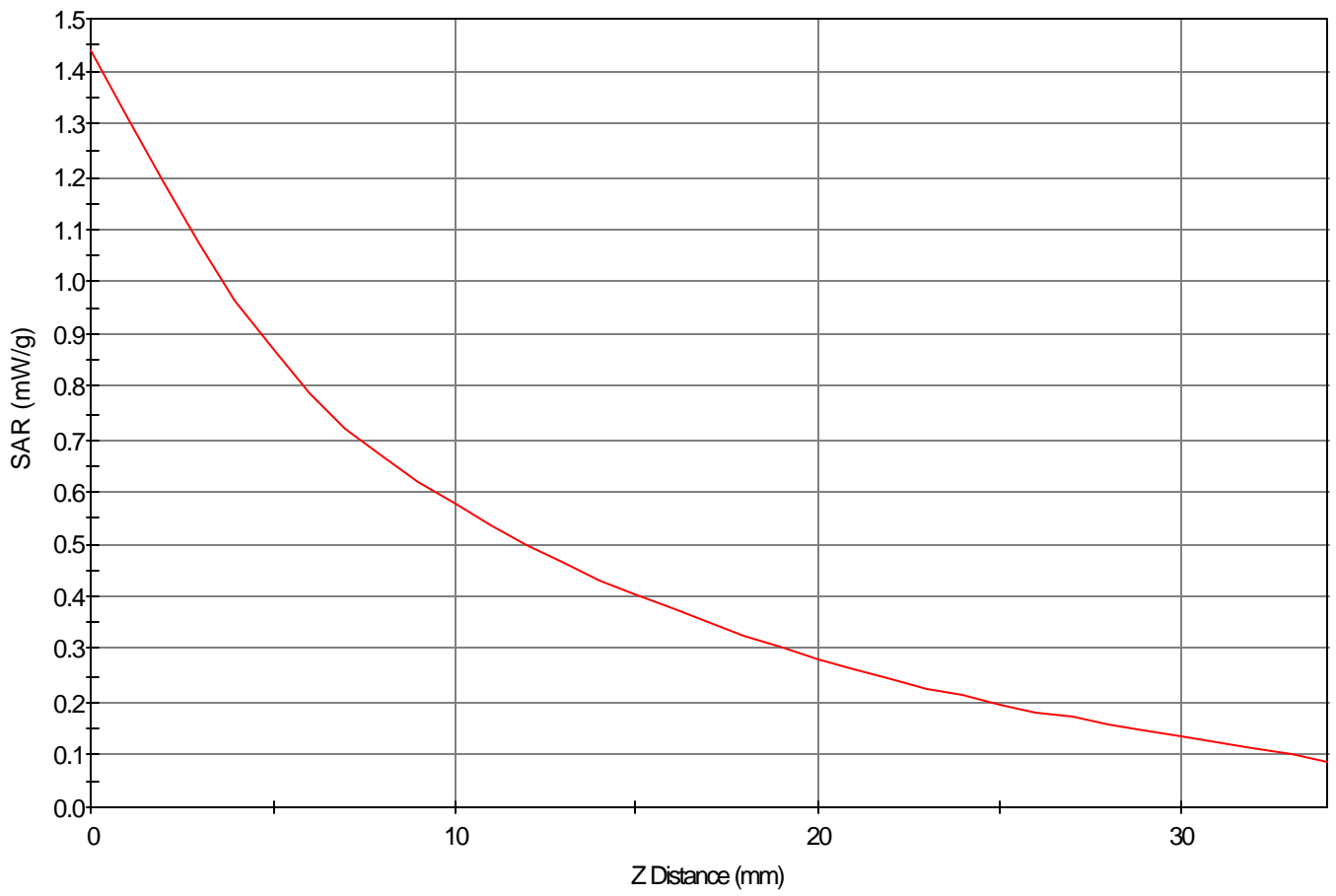
Area Scan - Max Peak SAR Value at x=0.0 y=-18.0 = 0.88 W/kg

Zoom Scan - Max Peak SAR Value at x=1.0 y=-19.0 z=0.0 = 1.44 W/kg

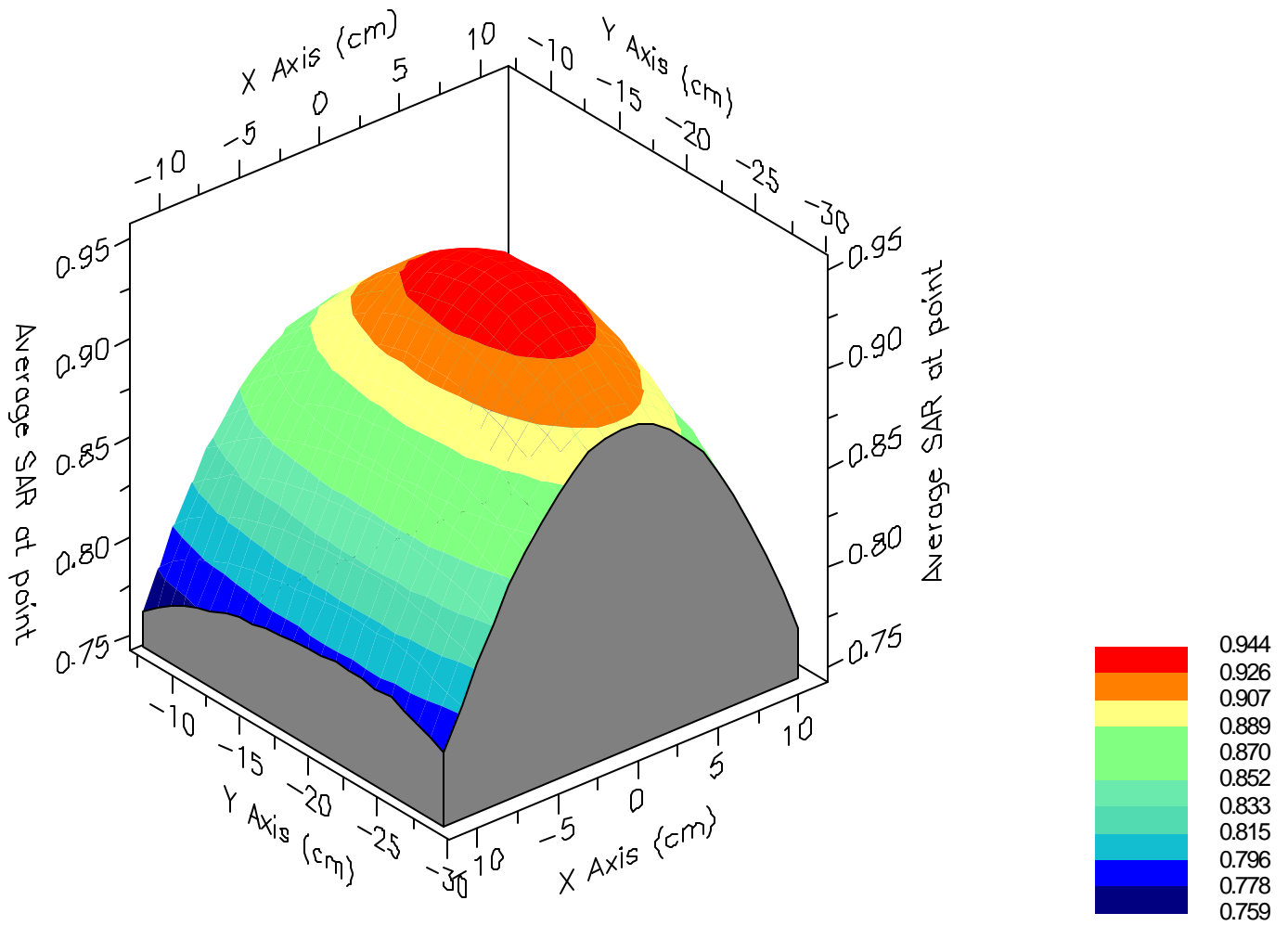
Max 1g SAR at x=1.0 y=-19.0 z=0.0 = 0.94 W/kg

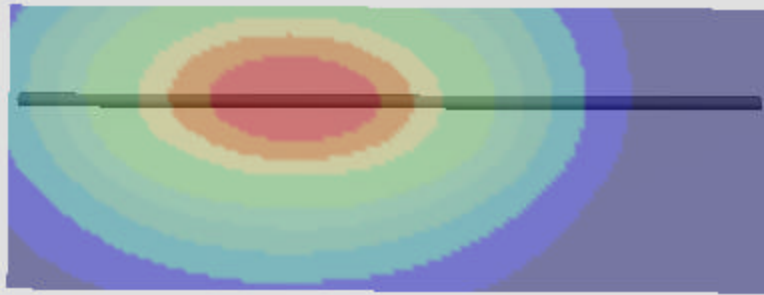
Max 10g SAR at x=0.0 y=-19.0 z=0.0 = 0.61 W/kg

SAR - Z Axis
at Hotspot x:1.0 y:-19.0



1g SAR Values





SAR Data Report 02092609

Start : 26-Sep-02 03:00:09 pm
End : 26-Sep-02 03:07:33 pm
Code Version : 4.08
Robot Version: 4.08

Product Data:

Type : LGE
Model Number : LST-D400
Serial Number : 1
Frequency : 1825.25 MHz
Transmit Pwr : 0.250 W
Antenna Type : Helical
Antenna Posn. : Fixed

Measurement Data:

Phantom Name : SAM FLAT2
Phantom Type : Uniphantom
Tissue Type : Muscle
Tissue Dielectric : 55.200
Tissue Conductivity : 1.500
Tissue Density : 1.000
Robot Name : CRS

Probe Data:

Probe Name : PCT002
Probe Type : E Fld Triangle
Frequency : 1900 MHz
Tissue Type : Muscle
Calibrated Dielectric : 53.900
Calibrated Conductivity : 1.480
Calibrated Density : 1.000
Probe Offset : 2.400 mm
Conversion Factor : 4.500
Probe Sensitivity : 3.000 2.995 2.653 mV/(mW/cm^2)
Amplifier Gains : 20.00 20.00 20.00

Sample:

Rate: 6000 Samples/Sec
Count: 100 Samples
NIDAQ Gain: 5

Comments:

PCS Mode CH-25
Body
CF=1; Amb. Temp= 22.2 'C; Liq. Temp=22.0 'C

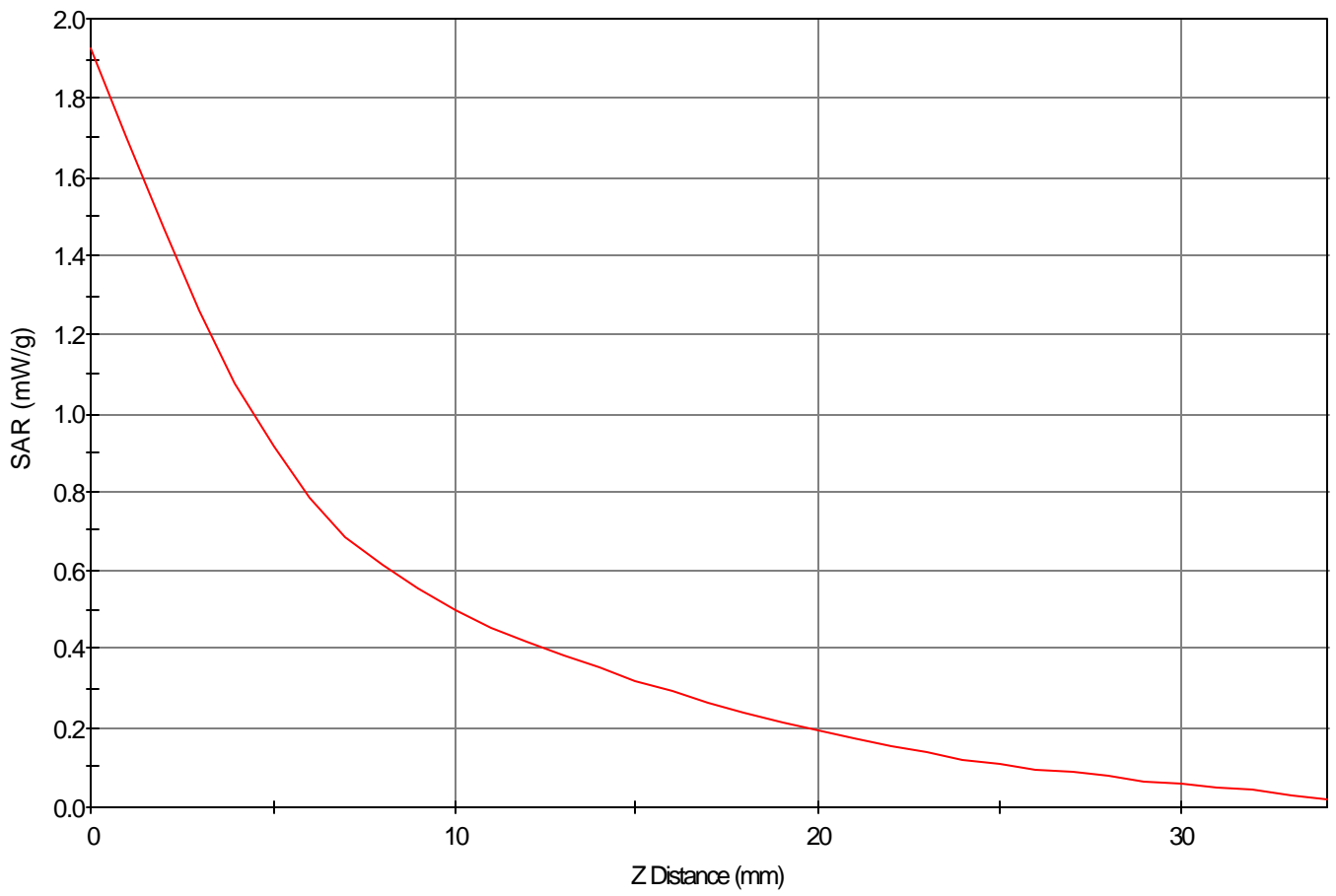
Area Scan - Max Peak SAR Value at x=1.0 y=19.0 = 0.93 W/kg

Zoom Scan - Max Peak SAR Value at x=1.0 y=18.0 z=0.0 = 1.93 W/kg

Max 1g SAR at x=1.0 y=19.0 z=0.0 = 1.07 W/kg

Max 10g SAR at x=1.0 y=19.0 z=0.0 = 0.60 W/kg

SAR - Z Axis
at Hotspot x:1.0 y:18.0



1g SAR Values

