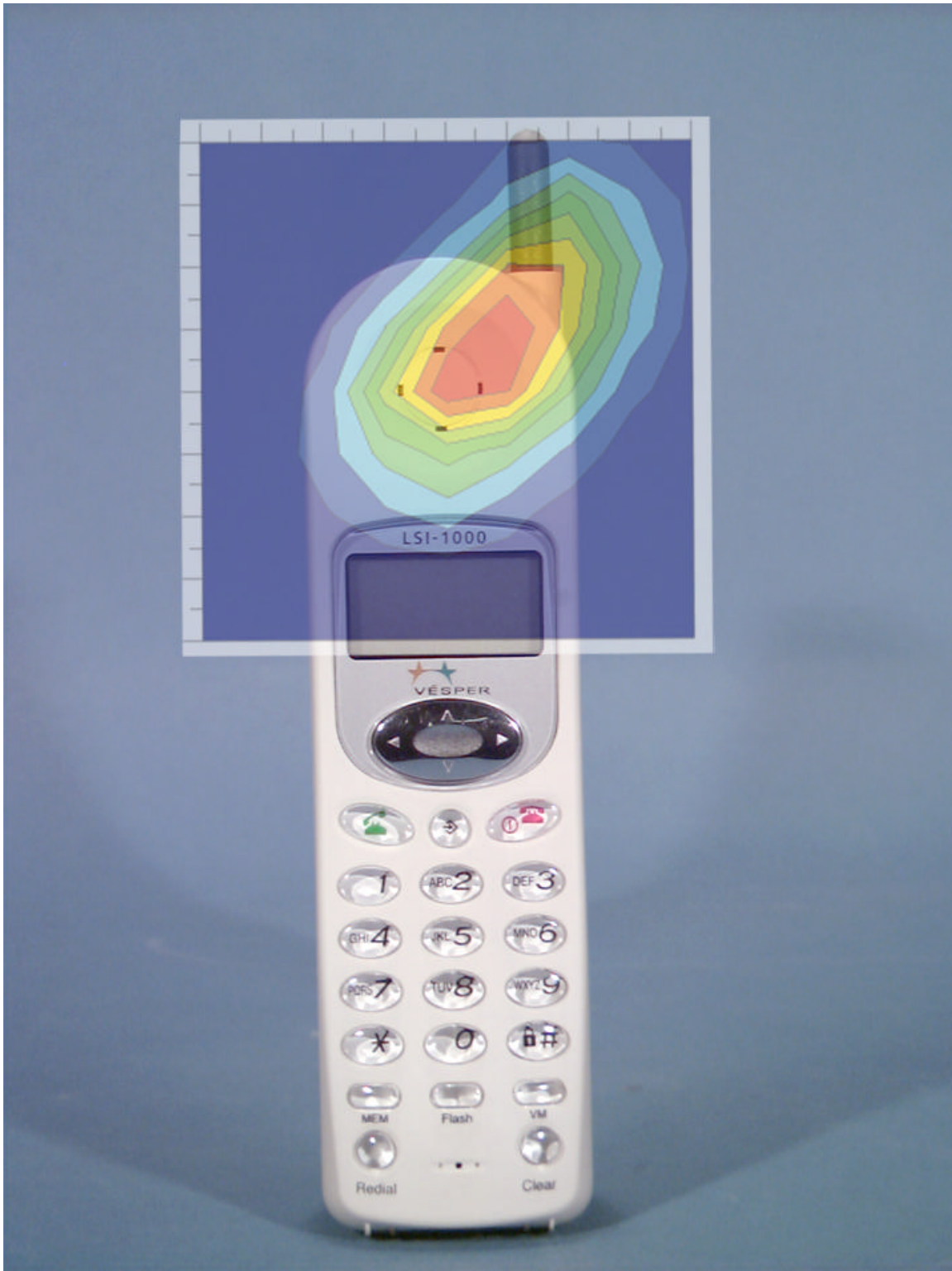


# Peak SAR Location

---

## Head SAR (Tilt)



File : c:/idx3/SYSTEM/SARMEAS3/data/Normal/01121212\_ZOOM.VLT  
Start : 12-Dec-101 11:09:08 am End : 12-Dec-101 11:10:02 am

Radio Type : LGE  
Model Number : LSI-1000  
Serial Number : 1  
Frequency : 1851.25 MHz  
Peak Trans. Pwr : 0.200 W  
Start Trans. Pwr : 0.200 W  
Antenna Type : Helical  
Antenna Posn. : Internal  
Phantom Type : Head  
Phantom Posn. : Right Ear  
Scan Type : SAR  
Probe Name : PCTEST  
Field Type : E Field  
Orientation : 0 Degrees

Mixture Type = Brain  
Mixture Dielectric Constant = 40.400  
Mixture Conductivity = 1.620

Comment :  
LGE CDMA PCS WLL TELEPHONE  
CH 0025 Conducted 23.0 dBm  
LGE CDMA PCS WLL TELEPHONE - TILT

Robot : PCTEST

Probe Offset = 0.20 cm  
Sensor Factor = 0.0108  
Conversion Factor = 0.550

PCTEST Amplifier Channel Settings : 0.309 0.361 0.421

Max Location : X = 0.000, Y = -3.000, Z = 0.000 (cm) Value = 21.308

Measured Values (volts) =  
1.682E-002 1.216E-002 8.702E-003 7.054E-003 4.801E-003 3.880E-003  
2.836E-003 2.679E-003 2.590E-003 1.518E-003 1.367E-003 2.103E-003  
1.777E-003 1.539E-003 2.219E-003 1.408E-003 1.600E-003 2.494E-003  
2.711E-003 2.236E-003 2.290E-003

Calc. Voltage @ Surface (Vs) = 0.0219

Voltage @ 1.00 cm (Vt) = 0.0066

Ave. Voltage (Vs+Vt)/2 = 0.0142

Ave. SAR over 1 g (mW/g) = 0.7256

File : c:/idx3/SYSTEM/SARMEAS3/data/Normal/01121209\_ZOOM.VLT  
Start : 12-Dec-101 10:45:07 am End : 12-Dec-101 11:03:59 am

Radio Type : LGE  
Model Number : LSI-1000  
Serial Number : 1  
Frequency : 1880.00 MHz  
Peak Trans. Pwr : 0.200 W  
Start Trans. Pwr : 0.200 W  
Antenna Type : Helical  
Antenna Posn. : Internal  
Phantom Type : Head  
Phantom Posn. : Right Ear  
Scan Type : ZOOM/SAR  
Probe Name : PCTEST  
Field Type : E Field  
Orientation : 0 Degrees

Mixture Type = Brain  
Mixture Dielectric Constant = 40.400  
Mixture Conductivity = 1.620

Comment :  
LGE CDMA PCS WLL TELEPHONE  
CH 0600 Conducted 23.0 dBm  
LGE CDMA PCS WLL TELEPHONE - TILT

Robot : PCTEST

Probe Offset = 0.20 cm  
Sensor Factor = 0.0108  
Conversion Factor = 0.550

PCTEST Amplifier Channel Settings : 0.309 0.361 0.421

Max Location : X = 0.000, Y = -3.000, Z = 0.000 (cm) Value = 21.308

Measured Values (volts) =  
2.049E-002 1.552E-002 1.078E-002 8.726E-003 6.754E-003 5.400E-003  
3.569E-003 2.968E-003 2.868E-003 1.957E-003 2.449E-003 1.766E-003  
1.707E-003 2.216E-003 1.776E-003 1.934E-003 1.681E-003 2.620E-003  
2.232E-003 2.126E-003 1.903E-003

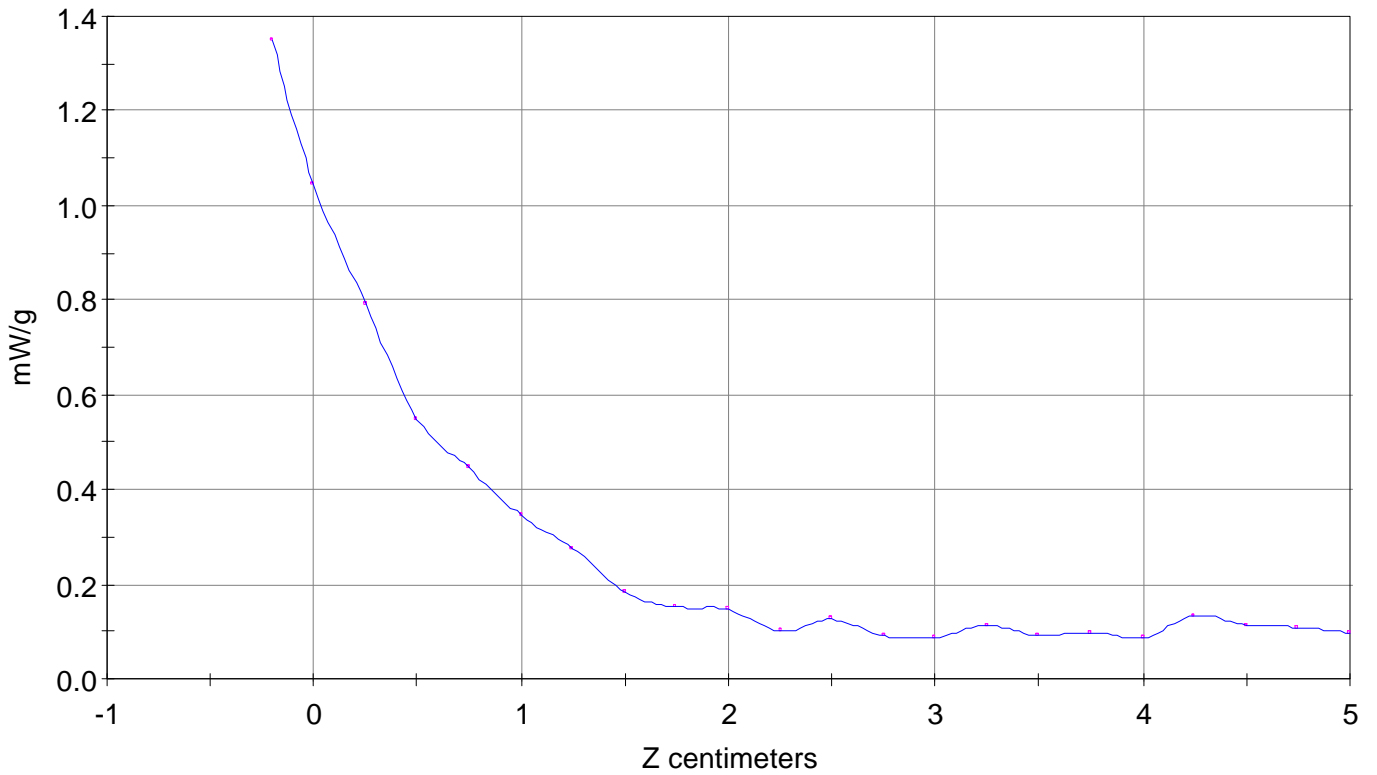
Calc. Voltage @ Surface (Vs) = 0.0265

Voltage @ 1.00 cm (Vt) = 0.0083

Ave. Voltage (Vs+Vt)/2 = 0.0174

Ave. SAR over 1 g (mW/g) = 0.8873

SAR Scan  
File : 01121209\_ZOOM  
Start : 12-Dec-101 10:45:07 am End : 12-Dec-101 11:03:59 am  
LGE/LSI-1000/1;1880.00MHz;W;Helical/Internal;  
Head/Right Ear;ZOOM/SAR;PCTEST/E Field/0 DegreesBrain/40.400/1.620

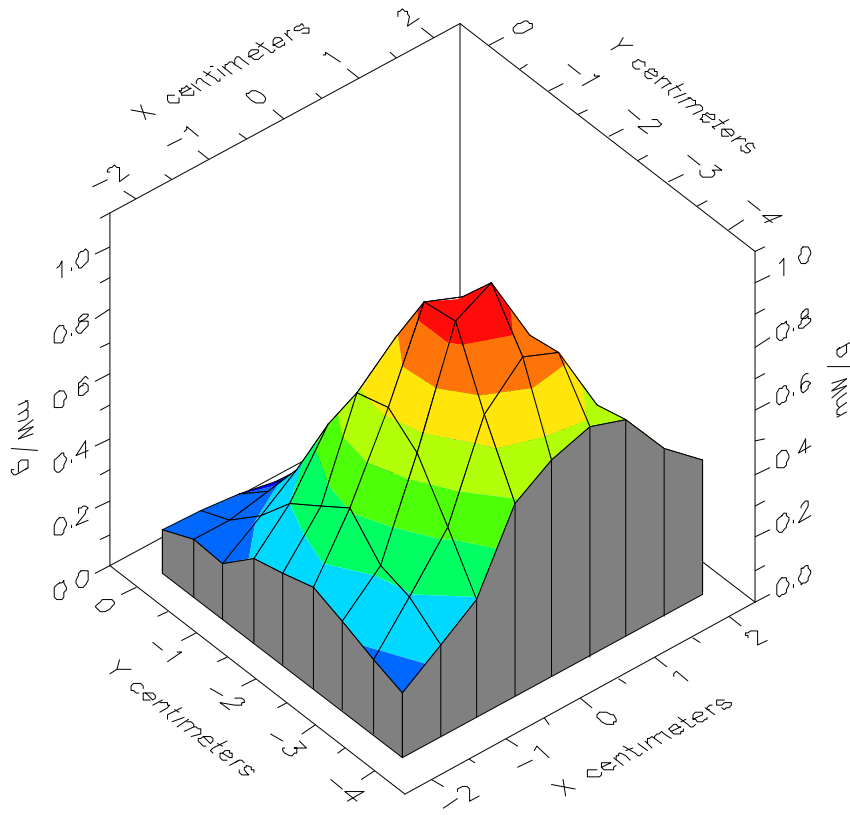


File : 01121209\_ZOOM

Start : 12-Dec-101 10:45:07 am End : 12-Dec-101 11:03:59 am

LGE/LSI-1000/1;1880.00MHz;W;Helical/Internal;

Head/Right Ear;ZOOM/SAR;PCTEST/E Field/0 DegreesBrain/40.400/1.620

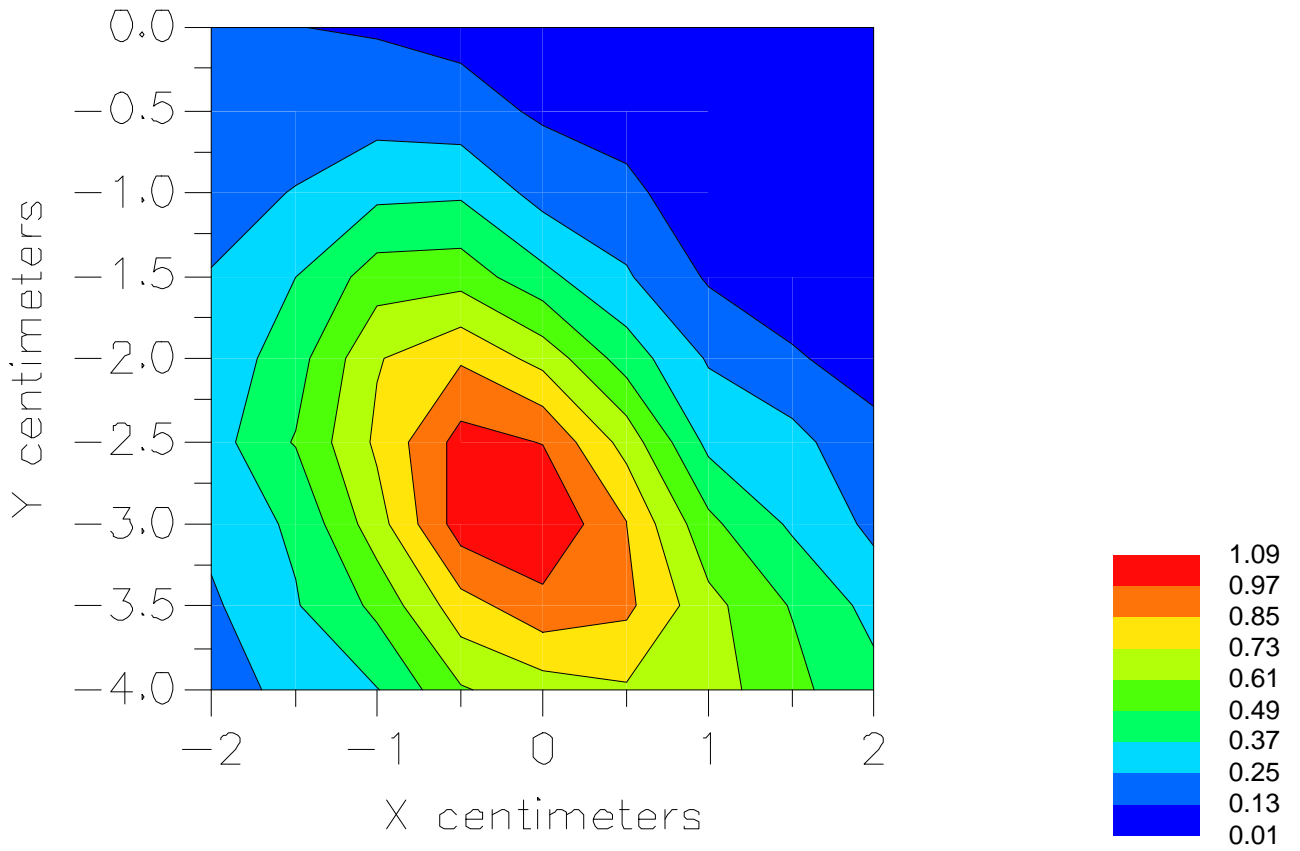


File : 01121209\_ZOOM

Start : 12-Dec-101 10:45:07 am End : 12-Dec-101 11:03:59 am

LGE/LSI-1000/1;1880.00MHz;W;Helical/Internal;

Head/Right Ear;ZOOM/SAR;PCTEST/E Field/0 DegreesBrain/40.400/1.620



File : c:/idx3/SYSTEM/SARMEAS3/data/Normal/01121211\_ZOOM.VLT  
Start : 12-Dec-101 11:07:38 am End : 12-Dec-101 11:08:33 am

Radio Type : LGE  
Model Number : LSI-1000  
Serial Number : 1  
Frequency : 1908.75 MHz  
Peak Trans. Pwr : 0.200 W  
Start Trans. Pwr : 0.200 W  
Antenna Type : Helical  
Antenna Posn. : Internal  
Phantom Type : Head  
Phantom Posn. : Right Ear  
Scan Type : SAR  
Probe Name : PCTEST  
Field Type : E Field  
Orientation : 0 Degrees

Mixture Type = Brain  
Mixture Dielectric Constant = 40.400  
Mixture Conductivity = 1.620

Comment :  
LGE CDMA PCS WLL TELEPHONE  
CH 1175 Conducted 23.0 dBm  
LGE CDMA PCS WLL TELEPHONE - TILT

Robot : PCTEST

Probe Offset = 0.20 cm  
Sensor Factor = 0.0108  
Conversion Factor = 0.550

PCTEST Amplifier Channel Settings : 0.309 0.361 0.421

Max Location : X = 0.000, Y = -3.000, Z = 0.000 (cm) Value = 21.308

Measured Values (volts) =  
1.866E-002 1.341E-002 9.152E-003 7.571E-003 5.470E-003 4.525E-003  
2.917E-003 2.918E-003 2.672E-003 2.001E-003 1.976E-003 1.240E-003  
1.549E-003 2.209E-003 2.120E-003 1.982E-003 1.657E-003 2.562E-003  
2.367E-003 2.326E-003 2.316E-003

Calc. Voltage @ Surface (Vs) = 0.0248

Voltage @ 1.00 cm (Vt) = 0.0072

Ave. Voltage (Vs+Vt)/2 = 0.0160

Ave. SAR over 1 g (mW/g) = 0.8141

File : c:/idx3/SYSTEM/SARMEAS3/data/Normal/01121207\_ZOOM.VLT  
Start : 12-Dec-101 10:03:46 am End : 12-Dec-101 10:04:41 am

Radio Type : LGE  
Model Number : LSI-1000  
Serial Number : 1  
Frequency : 1851.25 MHz  
Peak Trans. Pwr : 0.200 W  
Start Trans. Pwr : 0.200 W  
Antenna Type : Helical  
Antenna Posn. : Internal  
Phantom Type : Head  
Phantom Posn. : Left Ear  
Scan Type : SAR  
Probe Name : PCTEST  
Field Type : E Field  
Orientation : 0 Degrees

Mixture Type = Brain  
Mixture Dielectric Constant = 40.400  
Mixture Conductivity = 1.620

Comment :  
LGE CDMA PCS WLL TELEPHONE  
CH 0025 Conducted 23.0 dBm  
LGE CDMA PCS WLL TELEPHONE - TILT

Robot : PCTEST

Probe Offset = 0.20 cm  
Sensor Factor = 0.0108  
Conversion Factor = 0.550

PCTEST Amplifier Channel Settings : 0.309 0.361 0.421

Max Location : X = -1.000, Y = -2.000, Z = 0.000 (cm) Value = 25.323

Measured Values (volts) =  
1.878E-002 1.352E-002 9.814E-003 6.609E-003 5.288E-003 3.256E-003  
3.073E-003 1.774E-003 1.397E-003 1.112E-003 9.483E-004 8.339E-004  
1.036E-003 9.045E-004 1.370E-003 8.648E-004 1.422E-003 1.562E-003  
1.337E-003 1.579E-003 1.467E-003

Calc. Voltage @ Surface (Vs) = 0.0244

Voltage @ 1.00 cm (Vt) = 0.0063

Ave. Voltage (Vs+Vt)/2 = 0.0153

Ave. SAR over 1 g (mW/g) = 0.7817

File : c:/idx3/SYSTEM/SARMEAS3/data/Normal/01121203\_ZOOM.VLT  
Start : 12-Dec-101 09:37:37 am End : 12-Dec-101 09:56:33 am

Radio Type : LGE  
Model Number : LSI-1000  
Serial Number : 1  
Frequency : 1880.00 MHz  
Peak Trans. Pwr : 0.200 W  
Start Trans. Pwr : 0.200 W  
Antenna Type : Helical  
Antenna Posn. : Internal  
Phantom Type : Head  
Phantom Posn. : Left Ear  
Scan Type : ZOOM/SAR  
Probe Name : PCTEST  
Field Type : E Field  
Orientation : 0 Degrees

Mixture Type = Brain  
Mixture Dielectric Constant = 40.400  
Mixture Conductivity = 1.620

Comment :  
LGE CDMA PCS WLL TELEPHONE  
CH 0600 Conducted 23.0 dBm  
LGE CDMA PCS WLL TELEPHONE - TILT

Robot : PCTEST

Probe Offset = 0.20 cm  
Sensor Factor = 0.0108  
Conversion Factor = 0.550

PCTEST Amplifier Channel Settings : 0.309 0.361 0.421

Max Location : X = -1.000, Y = -2.000, Z = 0.000 (cm) Value = 25.323

Measured Values (volts) =  
2.546E-002 1.713E-002 1.133E-002 8.407E-003 6.177E-003 4.620E-003  
3.445E-003 2.991E-003 2.155E-003 1.838E-003 1.518E-003 1.084E-003  
1.276E-003 1.089E-003 1.126E-003 9.012E-004 1.509E-003 1.434E-003  
1.468E-003 1.727E-003 1.482E-003

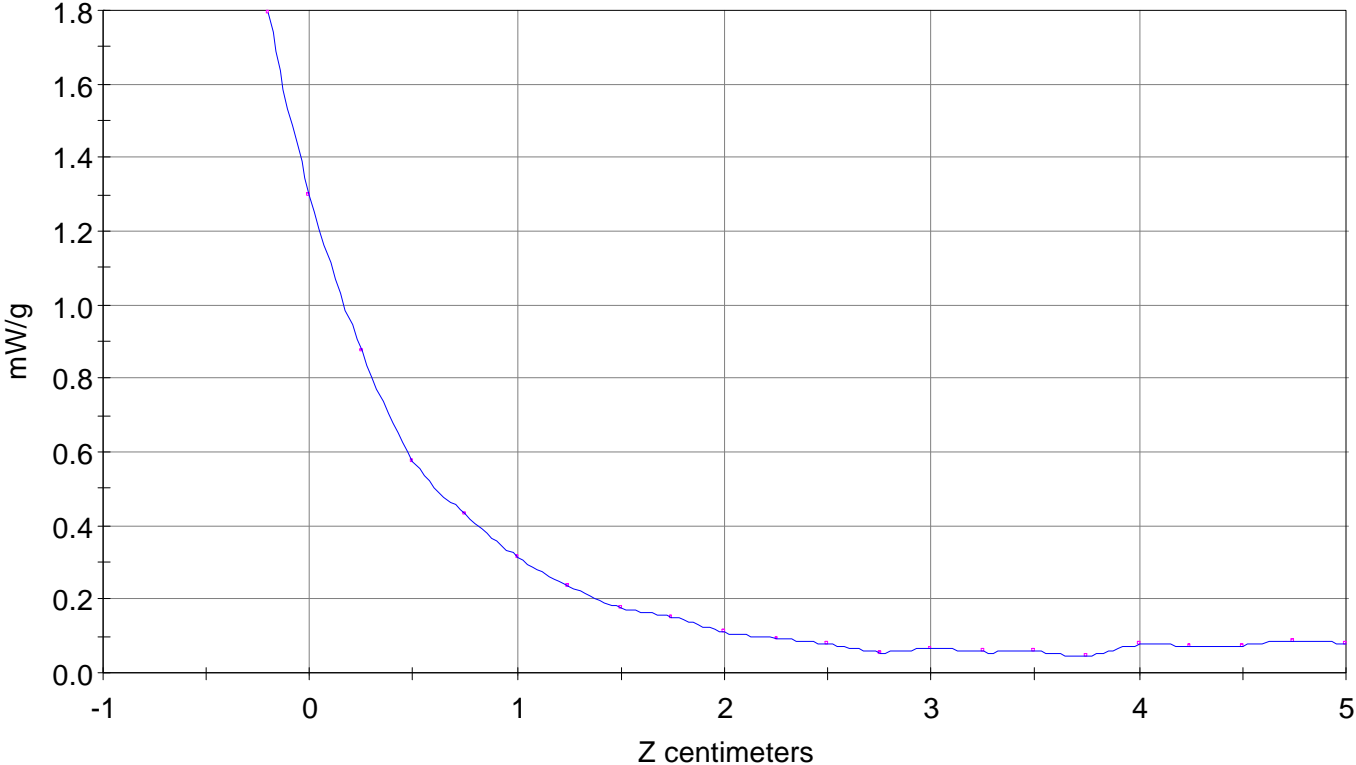
Calc. Voltage @ Surface (Vs) = 0.0352

Voltage @ 1.00 cm (Vt) = 0.0080

Ave. Voltage (Vs+Vt)/2 = 0.0216

Ave. SAR over 1 g (mW/g) = 1.0991

SAR Scan  
File : 01121203\_ZOOM  
Start : 12-Dec-101 09:37:37 am End : 12-Dec-101 09:56:33 am  
LGE/LSI-1000/1;1880.00MHz;W;Helical/Internal;  
Head/Left Ear;ZOOM/SAR;PCTEST/E Field/0 DegreesBrain/40.400/1.620

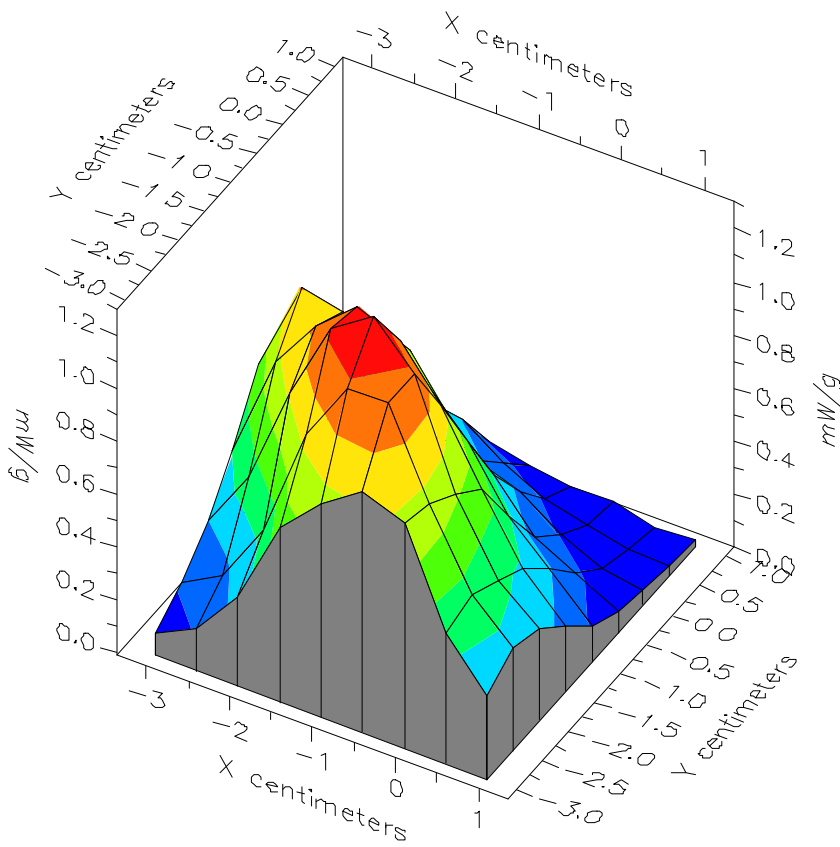


File : 01121203\_ZOOM

Start : 12-Dec-101 09:37:37 am End : 12-Dec-101 09:56:33 am

LGE/LSI-1000/1;1880.00MHz;W;Helical/Internal;

Head/Left Ear;ZOOM/SAR;PCTEST/E Field/0 DegreesBrain/40.400/1.620

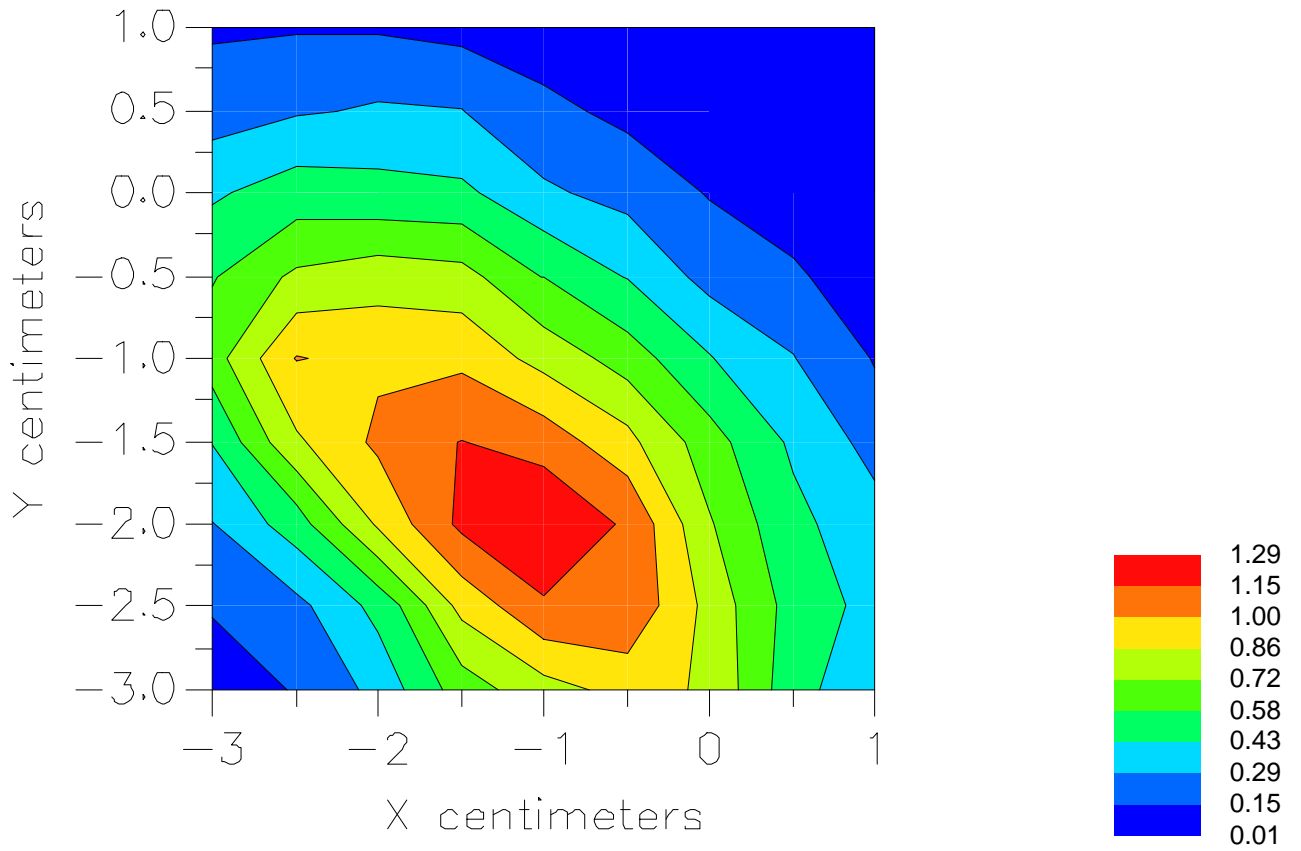


File : 01121203\_ZOOM

Start : 12-Dec-101 09:37:37 am End : 12-Dec-101 09:56:33 am

LGE/LSI-1000/1;1880.00MHz;W;Helical/Internal;

Head/Left Ear;ZOOM/SAR;PCTEST/E Field/0 DegreesBrain/40.400/1.620



File : c:/idx3/SYSTEM/SARMEAS3/data/Normal/01121206\_ZOOM.VLT  
Start : 12-Dec-101 10:02:16 am End : 12-Dec-101 10:03:11 am

Radio Type : LGE  
Model Number : LSI-1000  
Serial Number : 1  
Frequency : 1908.75 MHz  
Peak Trans. Pwr : 0.200 W  
Start Trans. Pwr : 0.200 W  
Antenna Type : Helical  
Antenna Posn. : Internal  
Phantom Type : Head  
Phantom Posn. : Left Ear  
Scan Type : SAR  
Probe Name : PCTEST  
Field Type : E Field  
Orientation : 0 Degrees

Mixture Type = Brain  
Mixture Dielectric Constant = 40.400  
Mixture Conductivity = 1.620

Comment :  
LGE CDMA PCS WLL TELEPHONE  
CH 1175 Conducted 23.0 dBm  
LGE CDMA PCS WLL TELEPHONE - TILT

Robot : PCTEST

Probe Offset = 0.20 cm  
Sensor Factor = 0.0108  
Conversion Factor = 0.550

PCTEST Amplifier Channel Settings : 0.309 0.361 0.421

Max Location : X = -1.000, Y = -2.000, Z = 0.000 (cm) Value = 25.323

Measured Values (volts) =  
2.009E-002 1.444E-002 1.043E-002 7.622E-003 5.682E-003 3.555E-003  
3.435E-003 2.520E-003 1.837E-003 1.134E-003 1.724E-003 8.627E-004  
1.308E-003 1.269E-003 1.486E-003 9.882E-004 1.258E-003 1.902E-003  
1.145E-003 1.594E-003 1.579E-003

Calc. Voltage @ Surface (Vs) = 0.0261

Voltage @ 1.00 cm (Vt) = 0.0072

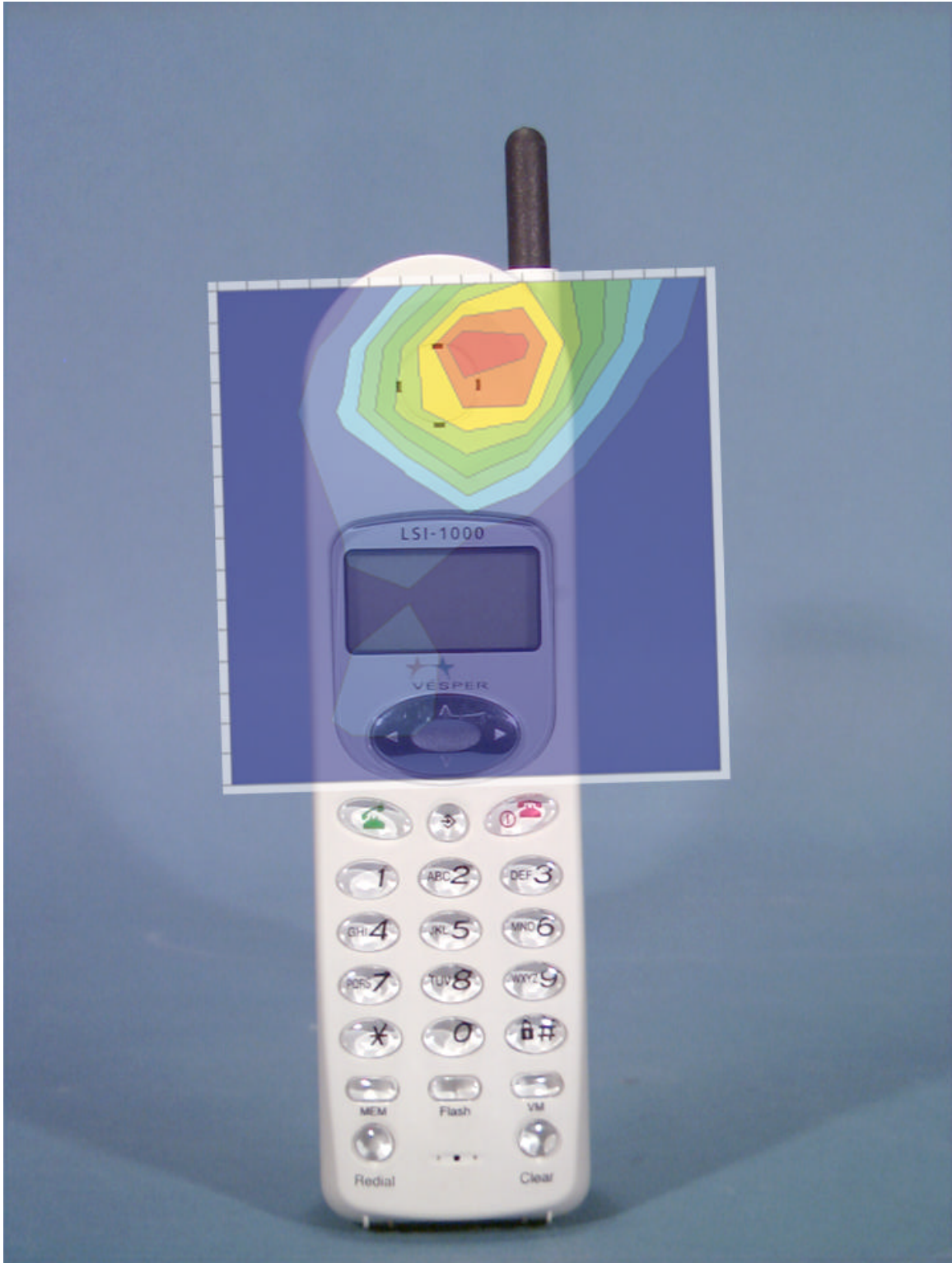
Ave. Voltage (Vs+Vt)/2 = 0.0167

Ave. SAR over 1 g (mW/g) = 0.8494

# Peak SAR Location

---

## Head SAR (Cheek)



File : c:/idx3/SYSTEM/SARMEAS3/data/Normal/01121115\_ZOOM.VLT  
Start : 11-Dec-101 04:38:04 pm End : 11-Dec-101 04:39:01 pm

Radio Type : LGE  
Model Number : LSI-1000  
Serial Number : 1  
Frequency : 1851.25 MHz  
Peak Trans. Pwr : 0.200 W  
Start Trans. Pwr : 0.200 W  
Antenna Type : Helical  
Antenna Posn. : Internal  
Phantom Type : Head  
Phantom Posn. : Left Ear  
Scan Type : SAR  
Probe Name : PCTEST  
Field Type : E Field  
Orientation : 0 Degrees

Mixture Type = Brain  
Mixture Dielectric Constant = 40.400  
Mixture Conductivity = 1.620

Comment :  
LGE CDMA PCS WLL TELEPHONE  
CH 0025 Conducted 23.0 dBm  
LGE CDMA PCS WLL TELEPHONE

Robot : PCTEST

Probe Offset = 0.20 cm  
Sensor Factor = 0.0108  
Conversion Factor = 0.550

PCTEST Amplifier Channel Settings : 0.309 0.361 0.421

Max Location : X = -3.000, Y = -2.000, Z = 0.000 (cm) Value = 12.283

Measured Values (volts) =  
1.114E-002 7.283E-003 5.735E-003 3.629E-003 2.739E-003 1.994E-003  
1.714E-003 1.236E-003 1.244E-003 1.143E-003 1.028E-003 1.270E-003  
1.185E-003 1.264E-003 1.153E-003 1.342E-003 1.343E-003 1.482E-003  
1.389E-003 1.812E-003 1.821E-003

Calc. Voltage @ Surface (Vs) = 0.0146

Voltage @ 1.00 cm (Vt) = 0.0035

Ave. Voltage (Vs+Vt)/2 = 0.0090

Ave. SAR over 1 g (mW/g) = 0.4589

File : c:/idx3/SYSTEM/SARMEAS3/data/Normal/01121110\_ZOOM.VLT  
Start : 11-Dec-101 03:31:39 pm End : 11-Dec-101 03:46:24 pm

Radio Type : LGE  
Model Number : LSI-1000  
Serial Number : 1  
Frequency : 1880.00 MHz  
Peak Trans. Pwr : 0.200 W  
Start Trans. Pwr : 0.200 W  
Antenna Type : Helical  
Antenna Posn. : Internal  
Phantom Type : Head  
Phantom Posn. : Left Ear  
Scan Type : ZOOM/SAR  
Probe Name : PCTEST  
Field Type : E Field  
Orientation : 0 Degrees

Mixture Type = Brain  
Mixture Dielectric Constant = 40.400  
Mixture Conductivity = 1.620

Comment :  
LGE CDMA PCS WLL TELEPHONE  
CH 0600 Conducted 23.0 dBm  
LGE CDMA PCS WLL TELEPHONE

Robot : PCTEST

Probe Offset = 0.20 cm  
Sensor Factor = 0.0108  
Conversion Factor = 0.550

PCTEST Amplifier Channel Settings : 0.309 0.361 0.421

Max Location : X = -3.000, Y = -2.000, Z = 0.000 (cm) Value = 24.741

Measured Values (volts) =  
2.314E-002 1.582E-002 1.160E-002 7.517E-003 5.944E-003 4.058E-003  
3.190E-003 2.642E-003 1.857E-003 1.713E-003 1.264E-003 1.296E-003  
1.357E-003 1.211E-003 1.102E-003 1.126E-003 1.242E-003 1.627E-003  
1.385E-003 1.889E-003 1.721E-003

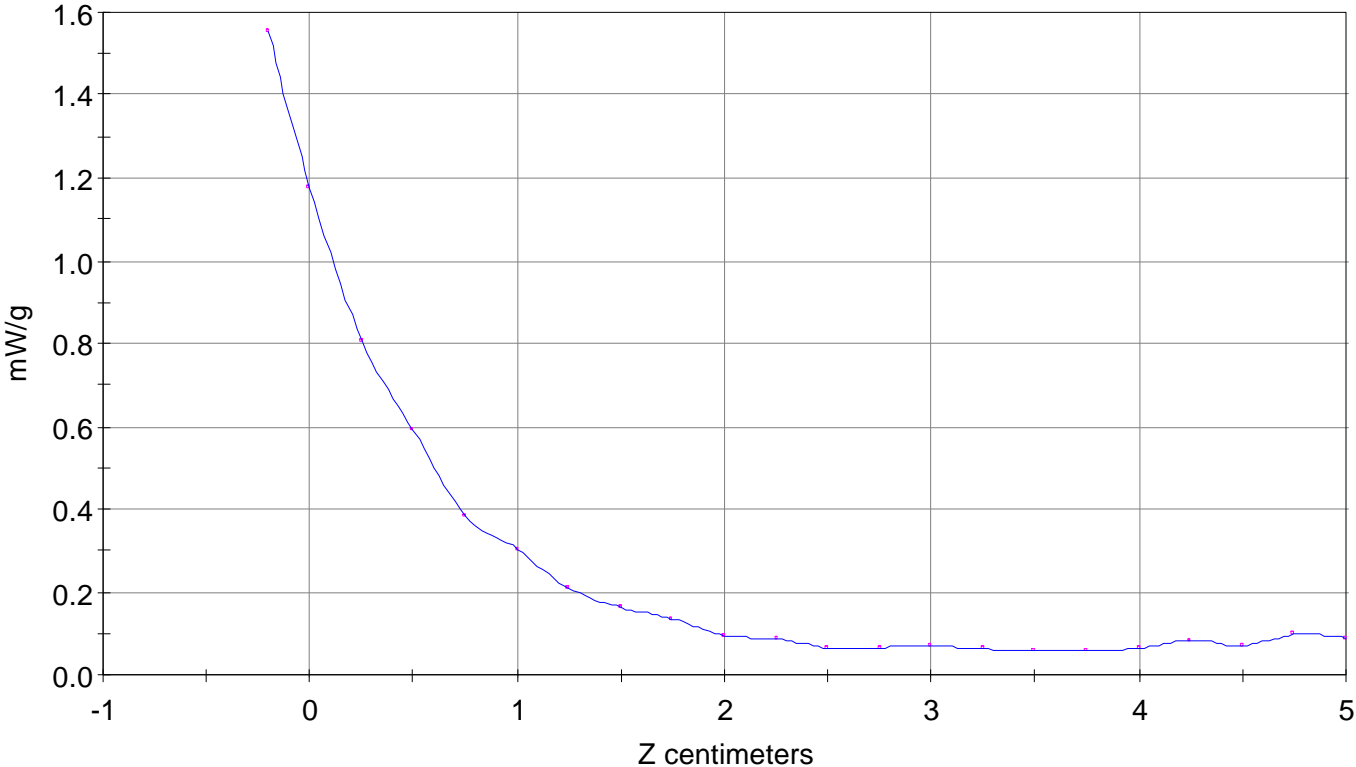
Calc. Voltage @ Surface (Vs) = 0.0305

Voltage @ 1.00 cm (Vt) = 0.0072

Ave. Voltage (Vs+Vt)/2 = 0.0189

Ave. SAR over 1 g (mW/g) = 0.9603

SAR Scan  
File : 01121110\_ZOOM  
Start : 11-Dec-101 03:31:39 pm End : 11-Dec-101 03:46:24 pm  
LGE/LSI-1000/1;1880.00MHz;W;Helical/Internal;  
Head/Left Ear;ZOOM/SAR;PCTEST/E Field/0 DegreesBrain/40.400/1.620

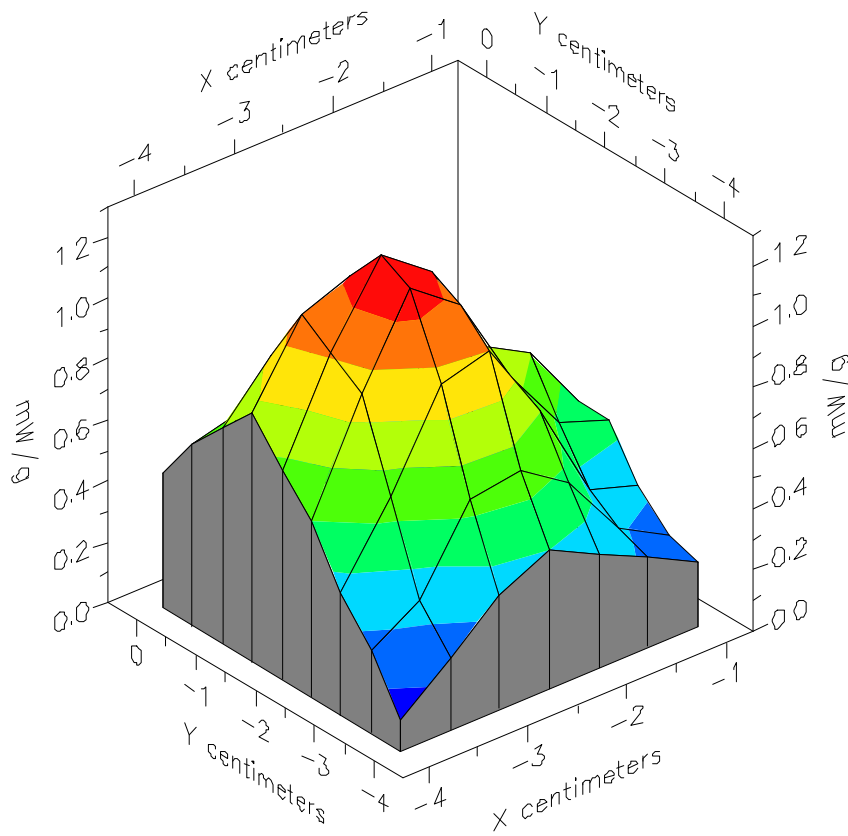


File : 01121110\_ZOOM

Start : 11-Dec-101 03:31:39 pm End : 11-Dec-101 03:46:24 pm

LGE/LSI-1000/1;1880.00MHz;W;Helical/Internal;

Head/Left Ear;ZOOM/SAR;PCTEST/E Field/0 DegreesBrain/40.400/1.620

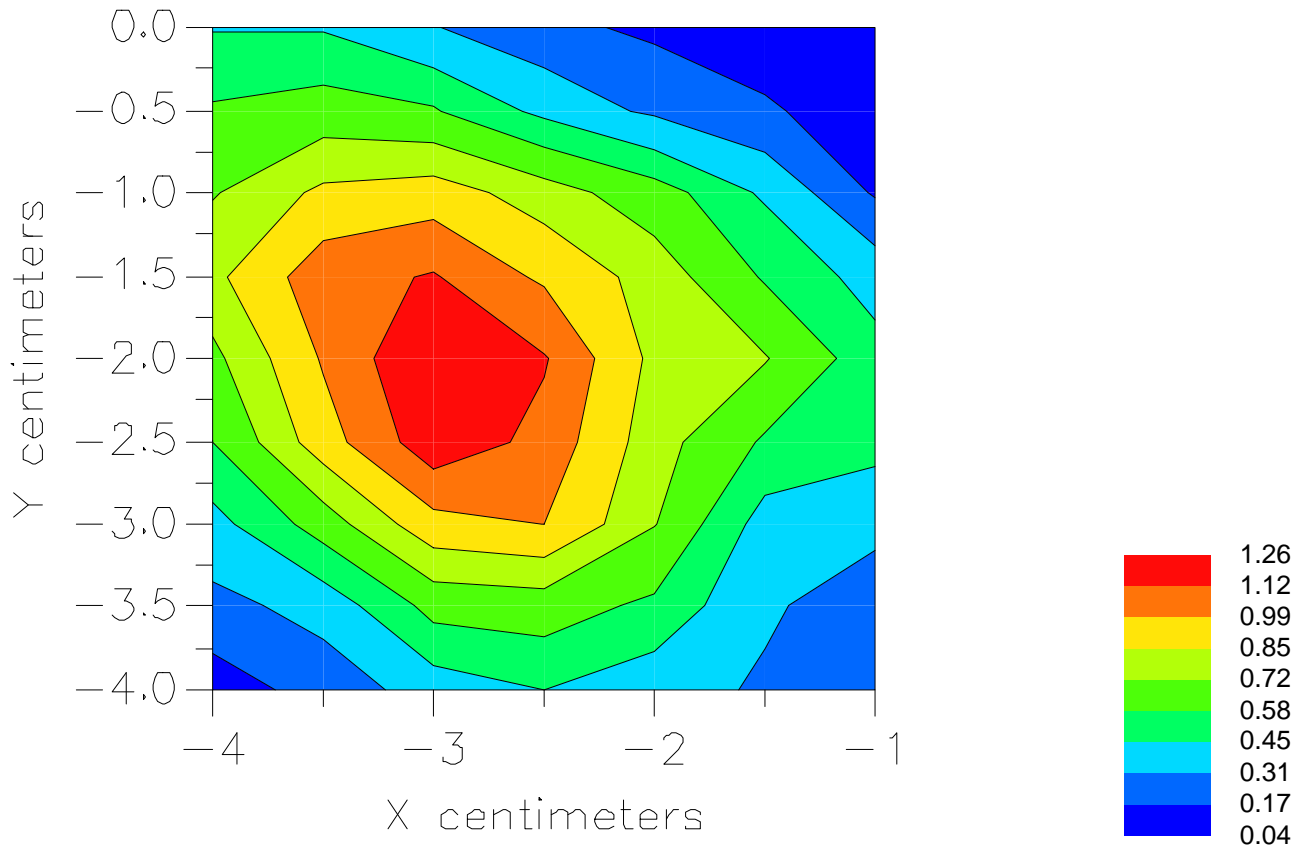


File : 01121110\_ZOOM

Start : 11-Dec-101 03:31:39 pm End : 11-Dec-101 03:46:24 pm

LGE/LSI-1000/1;1880.00MHz;W;Helical/Internal;

Head/Left Ear;ZOOM/SAR;PCTEST/E Field/0 DegreesBrain/40.400/1.620



File : c:/idx3/SYSTEM/SARMEAS3/data/Normal/01121116\_ZOOM.VLT  
Start : 11-Dec-101 04:40:39 pm End : 11-Dec-101 04:41:35 pm

Radio Type : LGE  
Model Number : LSI-1000  
Serial Number : 1  
Frequency : 1908.75 MHz  
Peak Trans. Pwr : 0.200 W  
Start Trans. Pwr : 0.200 W  
Antenna Type : Helical  
Antenna Posn. : Internal  
Phantom Type : Head  
Phantom Posn. : Left Ear  
Scan Type : SAR  
Probe Name : PCTEST  
Field Type : E Field  
Orientation : 0 Degrees

Mixture Type = Brain  
Mixture Dielectric Constant = 40.400  
Mixture Conductivity = 1.620

Comment :  
LGE CDMA PCS WLL TELEPHONE  
CH 1175 Conducted 23.0 dBm  
LGE CDMA PCS WLL TELEPHONE

Robot : PCTEST

Probe Offset = 0.20 cm  
Sensor Factor = 0.0108  
Conversion Factor = 0.550

PCTEST Amplifier Channel Settings : 0.309 0.361 0.421

Max Location : X = -3.000, Y = -2.000, Z = 0.000 (cm) Value = 12.283

Measured Values (volts) =  
1.654E-002 1.135E-002 8.198E-003 5.752E-003 3.784E-003 2.865E-003  
2.427E-003 1.699E-003 1.461E-003 1.277E-003 1.379E-003 1.010E-003  
1.127E-003 1.307E-003 1.423E-003 1.369E-003 1.441E-003 1.414E-003  
1.625E-003 1.662E-003 1.799E-003

Calc. Voltage @ Surface (Vs) = 0.0219

Voltage @ 1.00 cm (Vt) = 0.0054

Ave. Voltage (Vs+Vt)/2 = 0.0136

Ave. SAR over 1 g (mW/g) = 0.6940

File : c:/idx3/SYSTEM/SARMEAS3/data/Normal/01121217\_ZOOM.VLT  
Start : 12-Dec-101 11:43:31 am End : 12-Dec-101 11:44:29 am

Radio Type : LGE  
Model Number : LSI-1000  
Serial Number : 1  
Frequency : 1851.25 MHz  
Peak Trans. Pwr : 0.200 W  
Start Trans. Pwr : 0.200 W  
Antenna Type : Helical  
Antenna Posn. : Internal  
Phantom Type : Head  
Phantom Posn. : Right Ear  
Scan Type : SAR  
Probe Name : PCTEST  
Field Type : E Field  
Orientation : 0 Degrees

Mixture Type = Brain  
Mixture Dielectric Constant = 40.400  
Mixture Conductivity = 1.620

Comment :  
LGE CDMA PCS WLL TELEPHONE  
CH 0025 Conducted 23.0 dBm  
LGE CDMA PCS WLL TELEPHONE

Robot : PCTEST

Probe Offset = 0.20 cm  
Sensor Factor = 0.0108  
Conversion Factor = 0.550

PCTEST Amplifier Channel Settings : 0.309 0.361 0.421

Max Location : X = -0.500, Y = -2.500, Z = 0.000 (cm) Value = 22.176

Measured Values (volts) =  
1.686E-002 1.240E-002 7.903E-003 5.742E-003 3.740E-003 3.400E-003  
2.142E-003 1.834E-003 1.186E-003 1.389E-003 5.183E-004 5.728E-004  
6.485E-004 9.326E-004 1.107E-003 8.210E-004 1.232E-003 1.498E-003  
1.426E-003 1.338E-003 1.686E-003

Calc. Voltage @ Surface (Vs) = 0.0229

Voltage @ 1.00 cm (Vt) = 0.0053

Ave. Voltage (Vs+Vt)/2 = 0.0141

Ave. SAR over 1 g (mW/g) = 0.7184

File : c:/idx3/SYSTEM/SARMEAS3/data/Normal/01121214\_ZOOM.VLT  
Start : 12-Dec-101 11:27:29 am End : 12-Dec-101 11:37:26 am

Radio Type : LGE  
Model Number : LSI-1000  
Serial Number : 1  
Frequency : 1880.00 MHz  
Peak Trans. Pwr : 0.200 W  
Start Trans. Pwr : 0.200 W  
Antenna Type : Helical  
Antenna Posn. : Internal  
Phantom Type : Head  
Phantom Posn. : Right Ear  
Scan Type : ZOOM/SAR  
Probe Name : PCTEST  
Field Type : E Field  
Orientation : 0 Degrees

Mixture Type = Brain  
Mixture Dielectric Constant = 40.400  
Mixture Conductivity = 1.620

Comment :  
LGE CDMA PCS WLL TELEPHONE  
CH 0600 Conducted 23.0 dBm  
LGE CDMA PCS WLL TELEPHONE

Robot : PCTEST

Probe Offset = 0.20 cm  
Sensor Factor = 0.0108  
Conversion Factor = 0.550

PCTEST Amplifier Channel Settings : 0.309 0.361 0.421

Max Location : X = -0.500, Y = -2.500, Z = 0.000 (cm) Value = 22.176

Measured Values (volts) =  
1.943E-002 1.477E-002 9.787E-003 7.576E-003 5.102E-003 4.170E-003  
2.689E-003 2.179E-003 1.082E-003 8.156E-004 8.488E-004 6.747E-004  
9.588E-004 6.986E-004 1.024E-003 1.134E-003 1.144E-003 1.138E-003  
1.738E-003 1.801E-003 1.689E-003

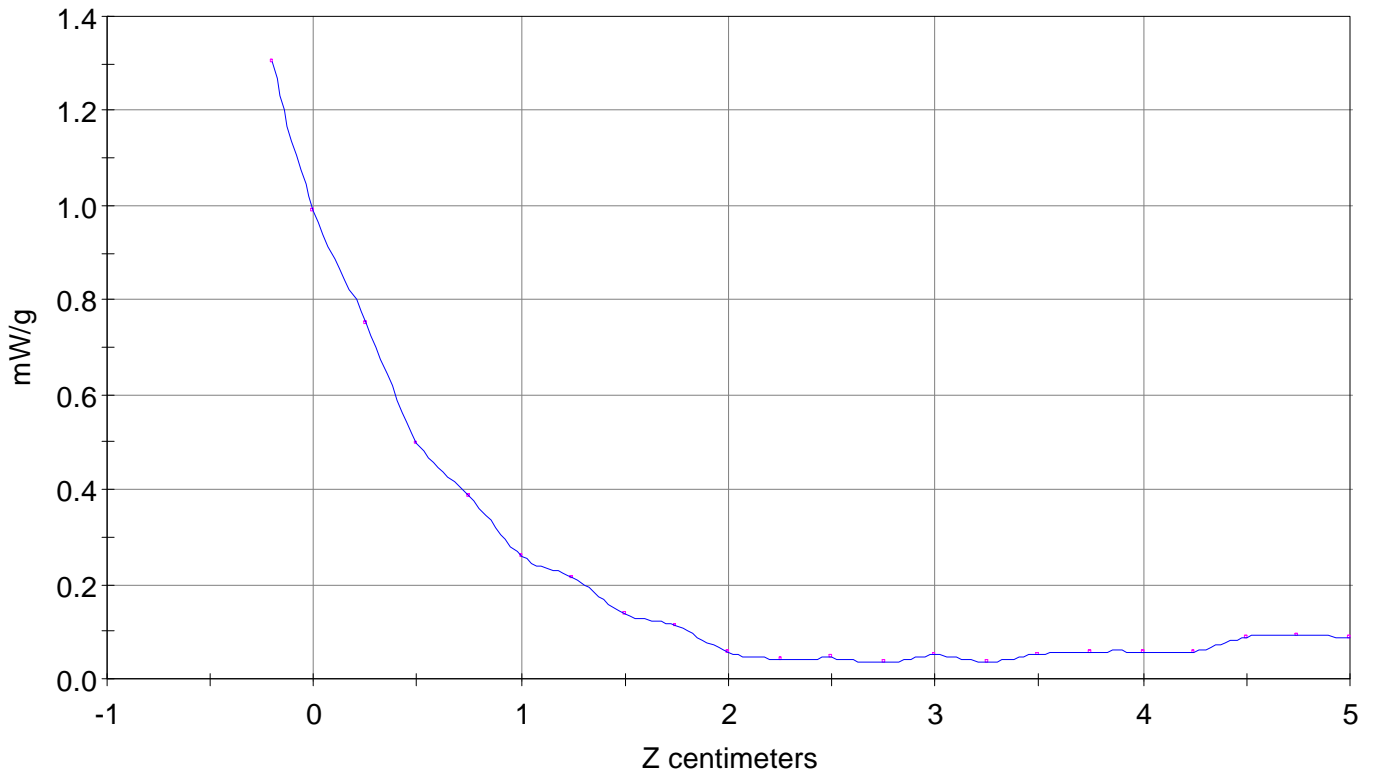
Calc. Voltage @ Surface (Vs) = 0.0256

Voltage @ 1.00 cm (Vt) = 0.0071

Ave. Voltage (Vs+Vt)/2 = 0.0163

Ave. SAR over 1 g (mW/g) = 0.8324

SAR Scan  
File : 01121214\_ZOOM  
Start : 12-Dec-101 11:27:29 am End : 12-Dec-101 11:37:26 am  
LGE/LSI-1000/1;1880.00MHz;W;Helical/Internal;  
Head/Right Ear;ZOOM/SAR;PCTEST/E Field/0 DegreesBrain/40.400/1.620

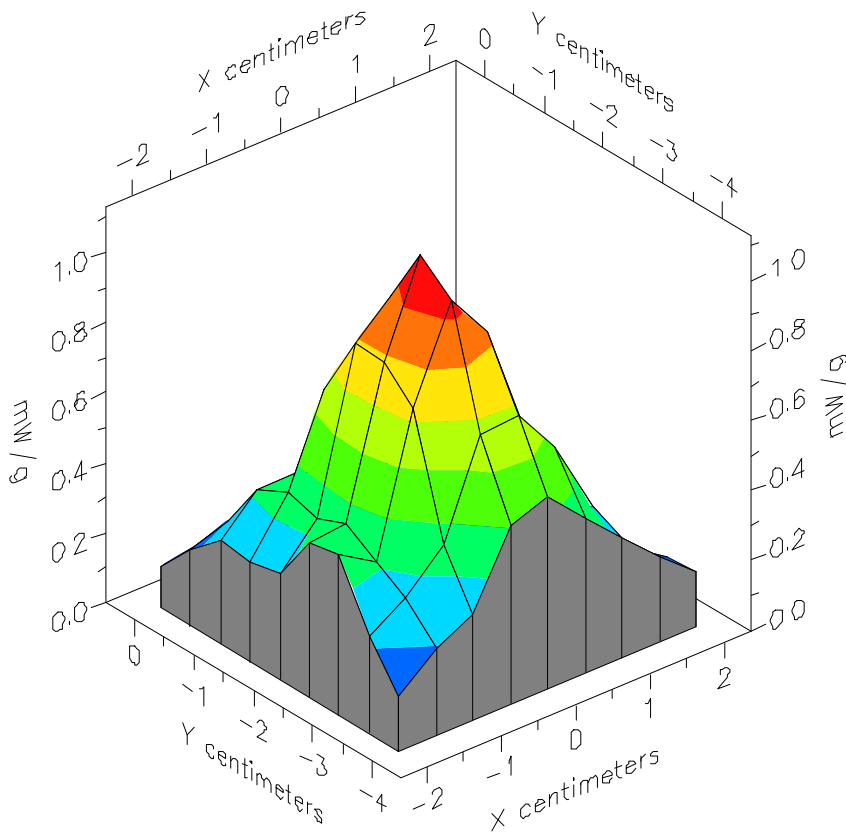


File : 01121214\_ZOOM

Start : 12-Dec-101 11:27:29 am End : 12-Dec-101 11:37:26 am

LGE/LSI-1000/1;1880.00MHz;W;Helical/Internal;

Head/Right Ear;ZOOM/SAR;PCTEST/E Field/0 DegreesBrain/40.400/1.620

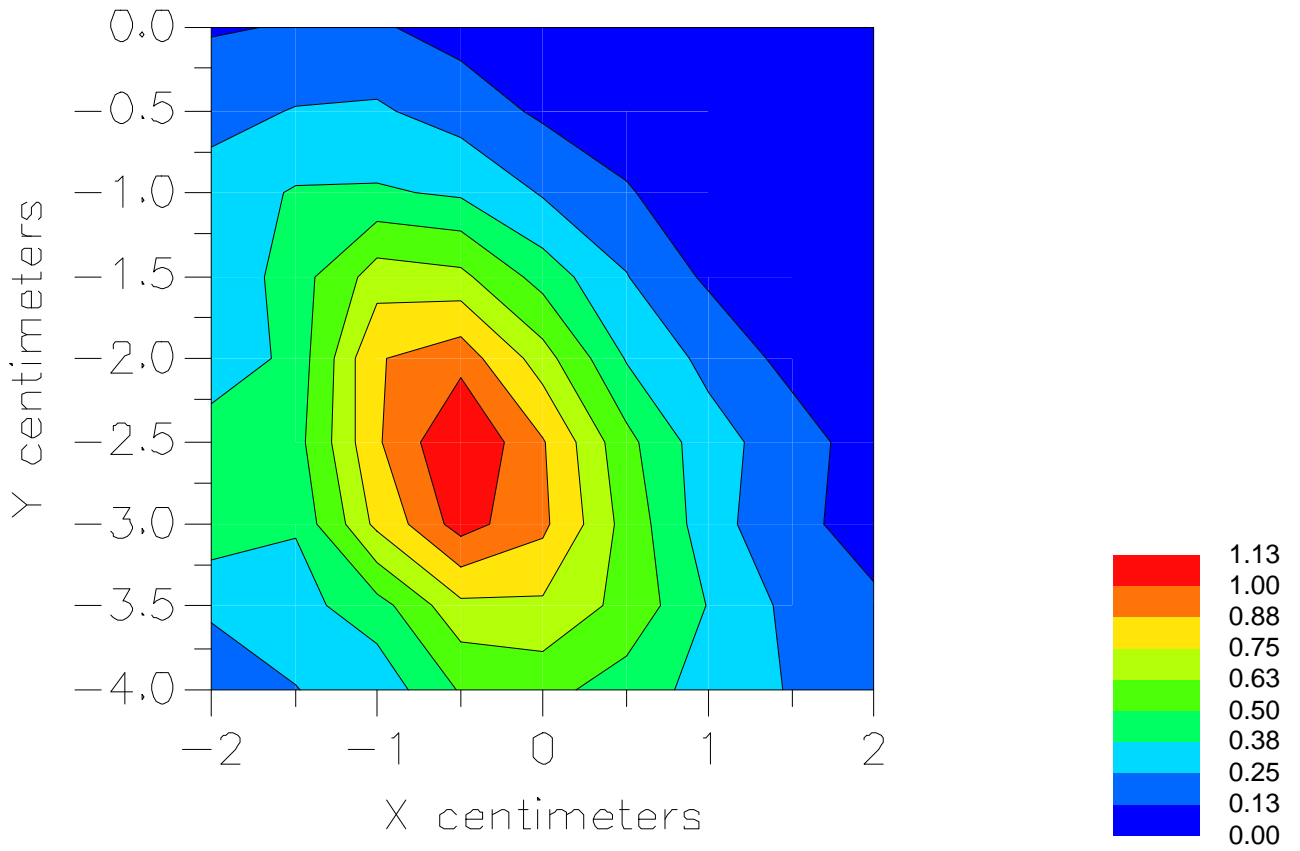


File : 01121214\_ZOOM

Start : 12-Dec-101 11:27:29 am End : 12-Dec-101 11:37:26 am

LGE/LSI-1000/1;1880.00MHz;W;Helical/Internal;

Head/Right Ear;ZOOM/SAR;PCTEST/E Field/0 DegreesBrain/40.400/1.620



File : c:/idx3/SYSTEM/SARMEAS3/data/Normal/01121216\_ZOOM.VLT  
Start : 12-Dec-101 11:42:08 am End : 12-Dec-101 11:43:03 am

Radio Type : LGE  
Model Number : LSI-1000  
Serial Number : 1  
Frequency : 1908.75 MHz  
Peak Trans. Pwr : 0.200 W  
Start Trans. Pwr : 0.200 W  
Antenna Type : Helical  
Antenna Posn. : Internal  
Phantom Type : Head  
Phantom Posn. : Right Ear  
Scan Type : SAR  
Probe Name : PCTEST  
Field Type : E Field  
Orientation : 0 Degrees

Mixture Type = Brain  
Mixture Dielectric Constant = 40.400  
Mixture Conductivity = 1.620

Comment :  
LGE CDMA PCS WLL TELEPHONE  
CH 1175 Conducted 23.0 dBm  
LGE CDMA PCS WLL TELEPHONE

Robot : PCTEST

Probe Offset = 0.20 cm  
Sensor Factor = 0.0108  
Conversion Factor = 0.550

PCTEST Amplifier Channel Settings : 0.309 0.361 0.421

Max Location : X = -0.500, Y = -2.500, Z = 0.000 (cm) Value = 22.176

Measured Values (volts) =  
1.707E-002 1.301E-002 8.600E-003 6.530E-003 4.414E-003 3.729E-003  
1.978E-003 2.044E-003 9.999E-004 6.926E-004 1.247E-003 7.427E-004  
1.129E-003 6.099E-004 7.834E-004 8.585E-004 8.456E-004 1.082E-003  
1.279E-003 1.540E-003 1.469E-003

Calc. Voltage @ Surface (Vs) = 0.0225

Voltage @ 1.00 cm (Vt) = 0.0061

Ave. Voltage (Vs+Vt)/2 = 0.0143

Ave. SAR over 1 g (mW/g) = 0.7283