

SAR Plots

- Verification Plots
- SAR Test Plots

DT&C Co., Ltd.

DUT: Dipole 2450 MHz; Type: D2450V2; Serial: D2450V2 - SN:920

Communication System: CW (0); Frequency: 2450 MHz; Duty Cycle: 1:1
Medium parameters used: $f = 2450$ MHz; $\sigma = 1.82$ S/m; $\epsilon_r = 39.027$; $\rho = 1000$ kg/m³
Phantom section: Flat Section

DASY5 Configuration:

Probe: EX3DV4 - SN3933; ConvF(7.55, 7.55, 7.55); Calibrated: 9/27/2016; ; Electronics: DAE4 Sn1453
Phantom: ELI v5.0_2013_10_08; Type: QDIVA001BB; Serial: 1223
Measurement SW: DASY52, Version 52.8 (8); SEMCAD X Version 14.6.10 (7331)

Test Date: 2016-11-21; Ambient Temp: 20.3; Tissue Temp: 20.9

2450 MHz System Verification

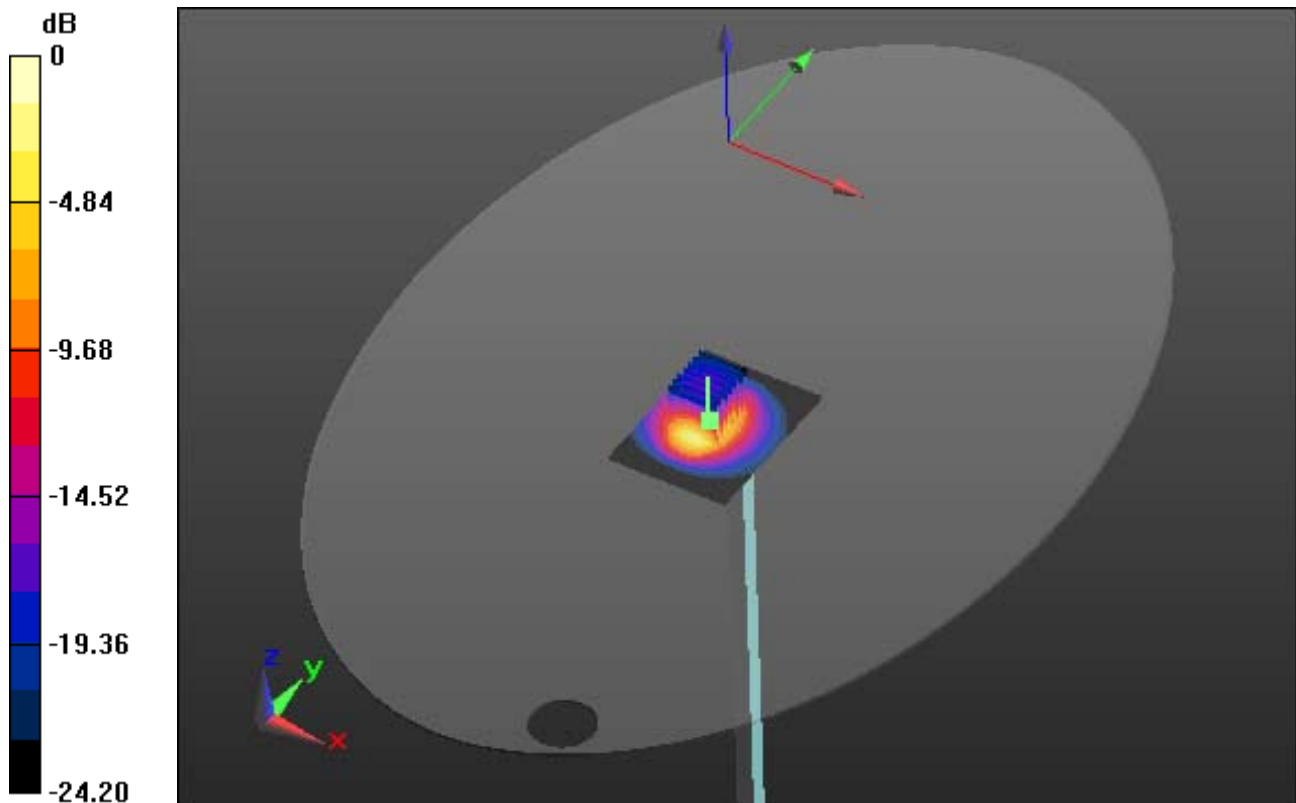
Area Scan (61x81x1): Interpolated grid: dx=12mm, dy=12mm

Zoom Scan (7x7x7)/Cube 0: Measurement grid: dx=5mm, dy=5mm, dz=5mm

Power Drift = 0.04 dB

Peak SAR (extrapolated) = 30.0 W/kg

SAR(1 g) = 13.8 W/kg; SAR(10 g) = 6.26 W/kg



0 dB = 21.5 W/kg

DT&C Co., Ltd.

DUT: Dipole 2450 MHz; Type: D2450V2; Serial: D2450V2 - SN:920

Communication System: CW (0); Frequency: 2450 MHz; Duty Cycle: 1:1
Medium parameters used: $f = 2450$ MHz; $\sigma = 1.82$ S/m; $\epsilon_r = 39.027$; $\rho = 1000$ kg/m³
Phantom section: Flat Section

DASY5 Configuration:

Probe: EX3DV4 - SN3933; ConvF(7.55, 7.55, 7.55); Calibrated: 9/27/2016; ; Electronics: DAE4 Sn1453
Phantom: ELI v5.0_2013_10_08; Type: QDIVA001BB; Serial: 1223
Measurement SW: DASY52, Version 52.8 (8); SEMCAD X Version 14.6.10 (7331)

Test Date: 2016-11-21; Ambient Temp: 20.3; Tissue Temp: 20.9

2450 MHz System Verification

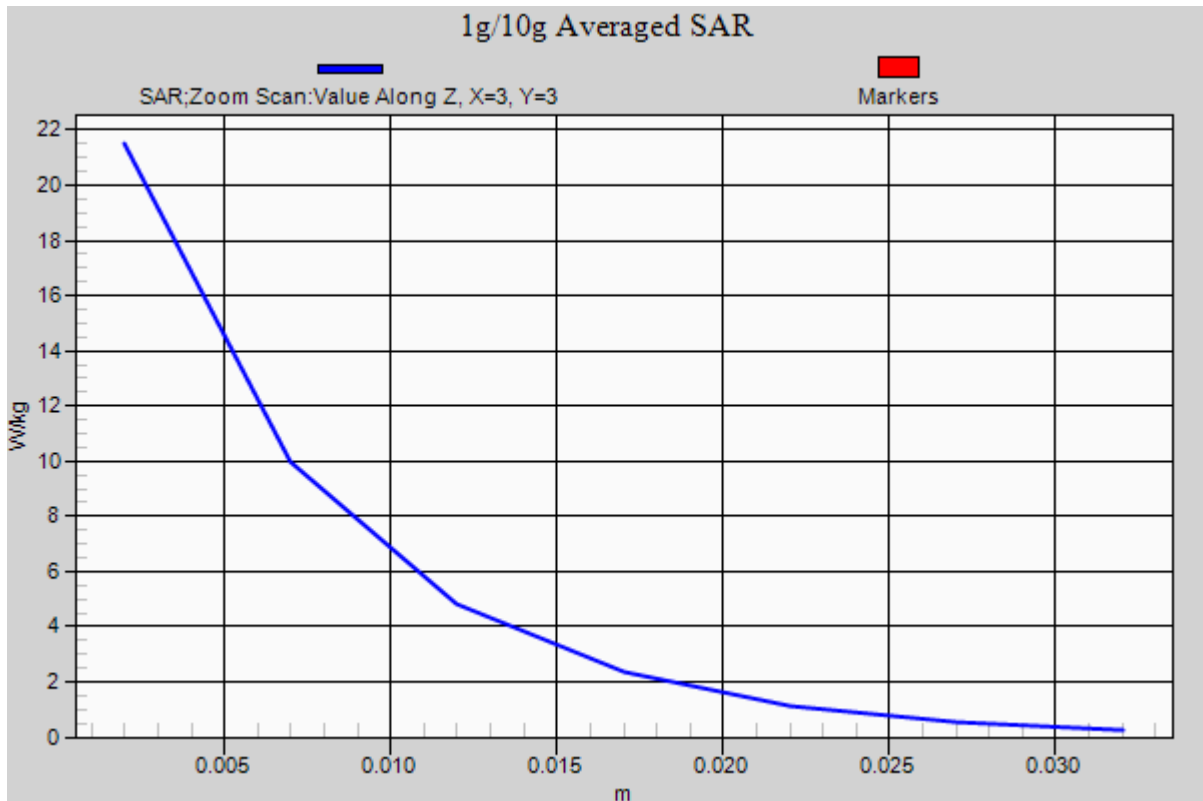
Area Scan (61x81x1): Interpolated grid: dx=12mm, dy=12mm

Zoom Scan (7x7x7)/Cube 0: Measurement grid: dx=5mm, dy=5mm, dz=5mm

Power Drift = 0.04 dB

Peak SAR (extrapolated) = 30.0 W/kg

SAR(1 g) = 13.8 W/kg; SAR(10 g) = 6.26 W/kg



DT&C Co., Ltd.

DUT: Dipole 2450 MHz; Type: D2450V2; Serial: D2450V2 - SN:920

Communication System: CW (0); Frequency: 2450 MHz; Duty Cycle: 1:1
Medium parameters used: $f = 2450$ MHz; $\sigma = 1.886$ S/m; $\epsilon_r = 50.85$; $\rho = 1000$ kg/m³
Phantom section: Flat Section

DASY5 Configuration:

Probe: EX3DV4 - SN3933; ConvF(7.59, 7.59, 7.59); Calibrated: 9/27/2016; ; Electronics: DAE4 Sn1453
Phantom: ELI v5.0_2013_10_08; Type: QDIVA001BB; Serial: 1223
Measurement SW: DASY52, Version 52.8 (8); SEMCAD X Version 14.6.10 (7331)

Test Date: 2016-11-21; Ambient Temp: 20.3; Tissue Temp: 20.9

2450 MHz System Verification

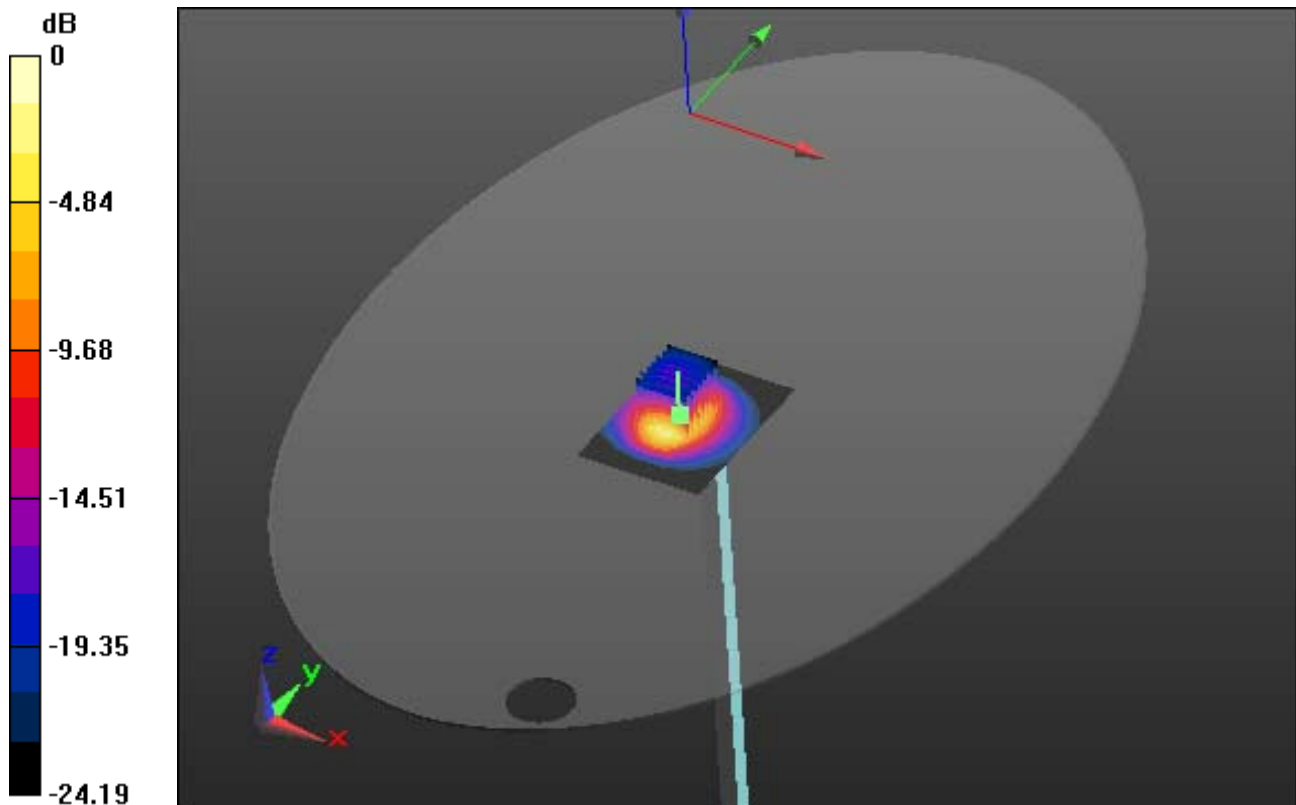
Area Scan (61x81x1): Interpolated grid: dx=12mm, dy=12mm

Zoom Scan (7x7x7)/Cube 0: Measurement grid: dx=5mm, dy=5mm, dz=5mm

Power Drift = 0.02 dB

Peak SAR (extrapolated) = 29.7 W/kg

SAR(1 g) = 13.5 W/kg; SAR(10 g) = 6.14 W/kg



0 dB = 21.5 W/kg

DT&C Co., Ltd.

DUT: Dipole 2450 MHz; Type: D2450V2; Serial: D2450V2 - SN:920

Communication System: CW (0); Frequency: 2450 MHz; Duty Cycle: 1:1
Medium parameters used: $f = 2450$ MHz; $\sigma = 1.886$ S/m; $\epsilon_r = 50.85$; $\rho = 1000$ kg/m³
Phantom section: Flat Section

DASY5 Configuration:

Probe: EX3DV4 - SN3933; ConvF(7.59, 7.59, 7.59); Calibrated: 9/27/2016; ; Electronics: DAE4 Sn1453
Phantom: ELI v5.0_2013_10_08; Type: QDIVA001BB; Serial: 1223
Measurement SW: DASY52, Version 52.8 (8); SEMCAD X Version 14.6.10 (7331)

Test Date: 2016-11-21; Ambient Temp: 20.3; Tissue Temp: 20.9

2450 MHz System Verification

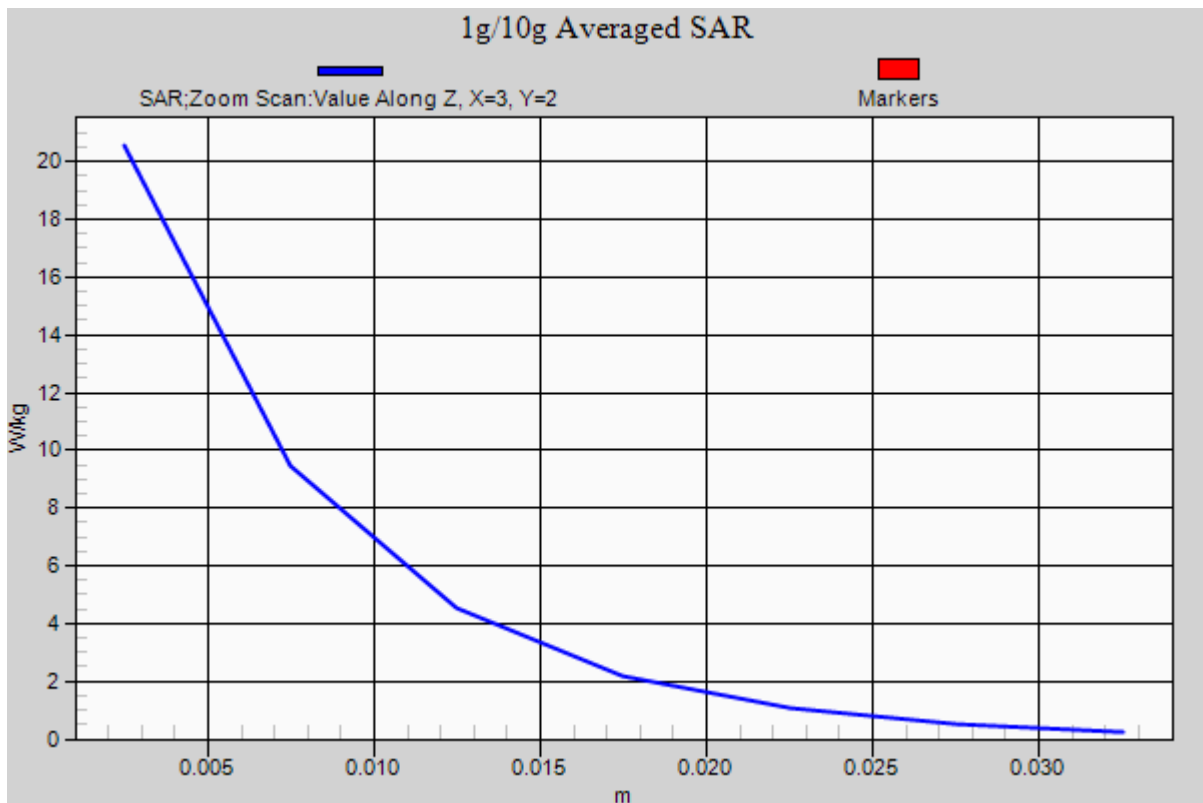
Area Scan (61x81x1): Interpolated grid: dx=12mm, dy=12 mm

Zoom Scan (7x7x7)/Cube 0: Measurement grid: dx=5mm, dy=5mm, dz=5mm

Power Drift = 0.02 dB

Peak SAR (extrapolated) = 29.7 W/kg

SAR(1 g) = 13.5 W/kg; SAR(10 g) = 6.14 W/kg



DT&C Co., Ltd.

DUT: Dipole 5000 MHz; Type: D5GHzV2; Serial: D5GHzV2 - SN:1212

Communication System: CW (0); Frequency: 5300 MHz; Duty Cycle: 1:1
Medium parameters used: $f = 5300$ MHz; $\sigma = 4.827$ S/m; $\epsilon_r = 36.166$; $\rho = 1000$ kg/m³
Phantom section: Flat Section

DASY5 Configuration:

Probe: EX3DV4 - SN3933; ConvF(5.11, 5.11, 5.11); Calibrated: 9/27/2016; ; Electronics: DAE4 Sn1453
Phantom: ELI v5.0_2013_10_08; Type: QDIVA001BB; Serial: 1223
Measurement SW: DASY52, Version 52.8 (8); SEMCAD X Version 14.6.10 (7331)

Test Date: 2016-11-22; Ambient Temp: 21.2; Tissue Temp: 21.5

5300 MHz System Verification

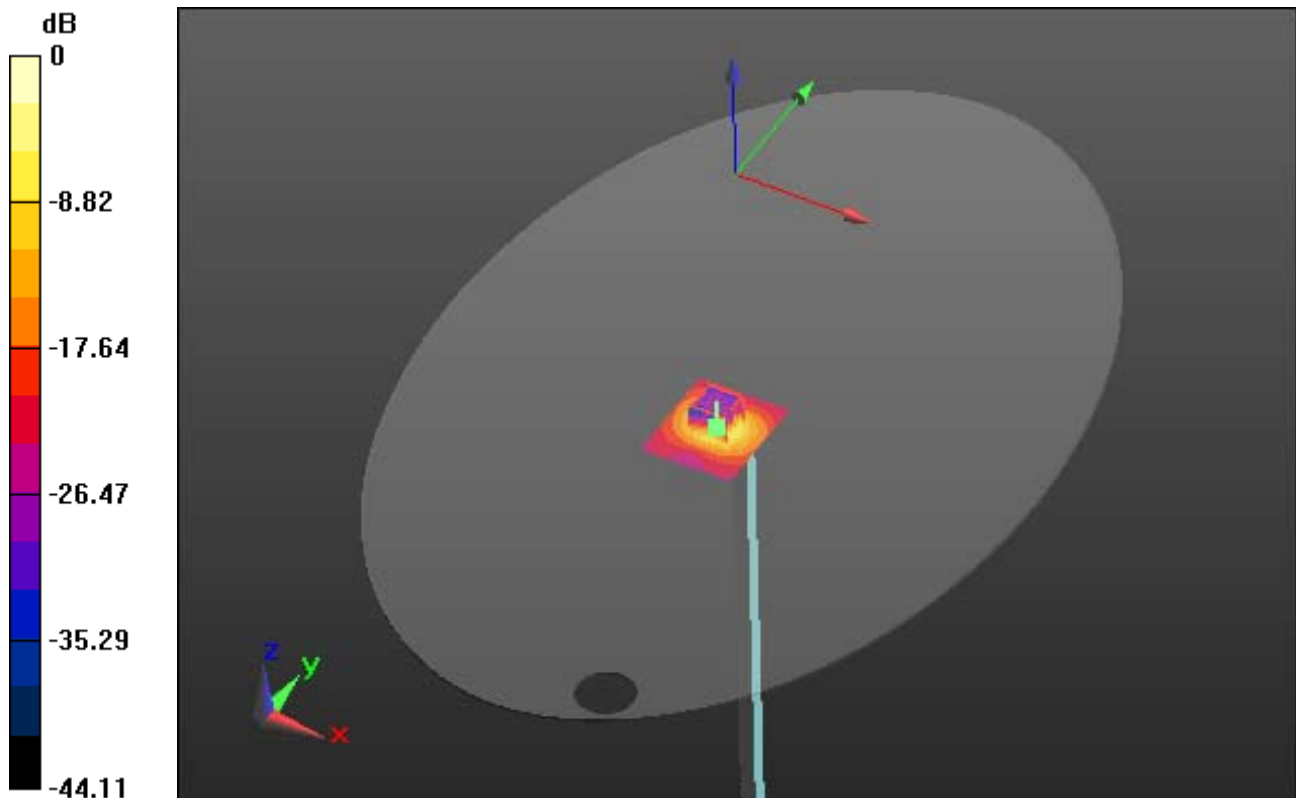
Area Scan (61x71x1): Interpolated grid: dx=10mm, dy=10mm

Zoom Scan (7x7x12)/Cube 0: Measurement grid: dx=4mm, dy=4mm, dz=2mm

Power Drift = 0.06 dB

Peak SAR (extrapolated) = 35.9 W/kg

SAR(1 g) = 8.03 W/kg; SAR(10 g) = 2.26 W/kg



0 dB = 17.0 W/kg

DT&C Co., Ltd.

DUT: Dipole 5000 MHz; Type: D5GHzV2; Serial: D5GHzV2 - SN:1212

Communication System: CW (0); Frequency: 5300 MHz; Duty Cycle: 1:1
Medium parameters used: $f = 5300$ MHz; $\sigma = 4.827$ S/m; $\epsilon_r = 36.166$; $\rho = 1000$ kg/m³
Phantom section: Flat Section

DASY5 Configuration:

Probe: EX3DV4 - SN3933; ConvF(5.11, 5.11, 5.11); Calibrated: 9/27/2016; ; Electronics: DAE4 Sn1453
Phantom: ELI v5.0_2013_10_08; Type: QDIVA001BB; Serial: 1223
Measurement SW: DASY52, Version 52.8 (8); SEMCAD X Version 14.6.10 (7331)

Test Date: 2016-11-22; Ambient Temp: 21.2; Tissue Temp: 21.5

5300 MHz System Verification

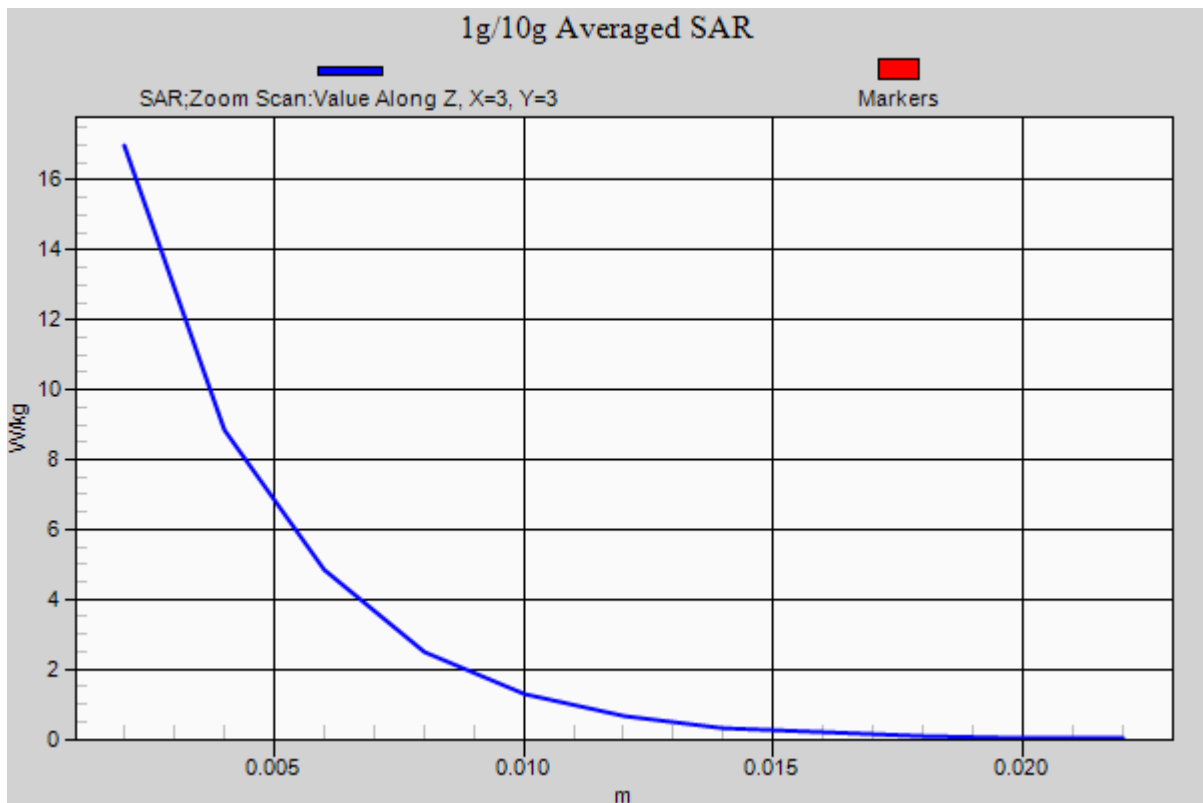
Area Scan (61x71x1): Interpolated grid: dx=10mm, dy=10mm

Zoom Scan (7x7x12)/Cube 0: Measurement grid: dx=4mm, dy=4mm, dz=2mm

Power Drift = 0.06 dB

Peak SAR (extrapolated) = 35.9 W/kg

SAR(1 g) = 8.03 W/kg; SAR(10 g) = 2.26 W/kg



DT&C Co., Ltd.

DUT: Dipole 5000 MHz; Type: D5GHzV2; Serial: D5GHzV2 - SN:1212

Communication System: CW (0); Frequency: 5300 MHz; Duty Cycle: 1:1
Medium parameters used: $f = 5300$ MHz; $\sigma = 5.459$ S/m; $\epsilon_r = 49.504$; $\rho = 1000$ kg/m³
Phantom section: Flat Section

DASY5 Configuration:

Probe: EX3DV4 - SN3933; ConvF(4.49, 4.49, 4.49); Calibrated: 9/27/2016; ; Electronics: DAE4 Sn1453
Phantom: ELI v5.0_2013_10_08; Type: QDIVA001BB; Serial: 1223
Measurement SW: DASY52, Version 52.8 (8); SEMCAD X Version 14.6.10 (7331)

Test Date: 2016-11-22; Ambient Temp: 21.2; Tissue Temp: 21.5

5300 MHz System Verification

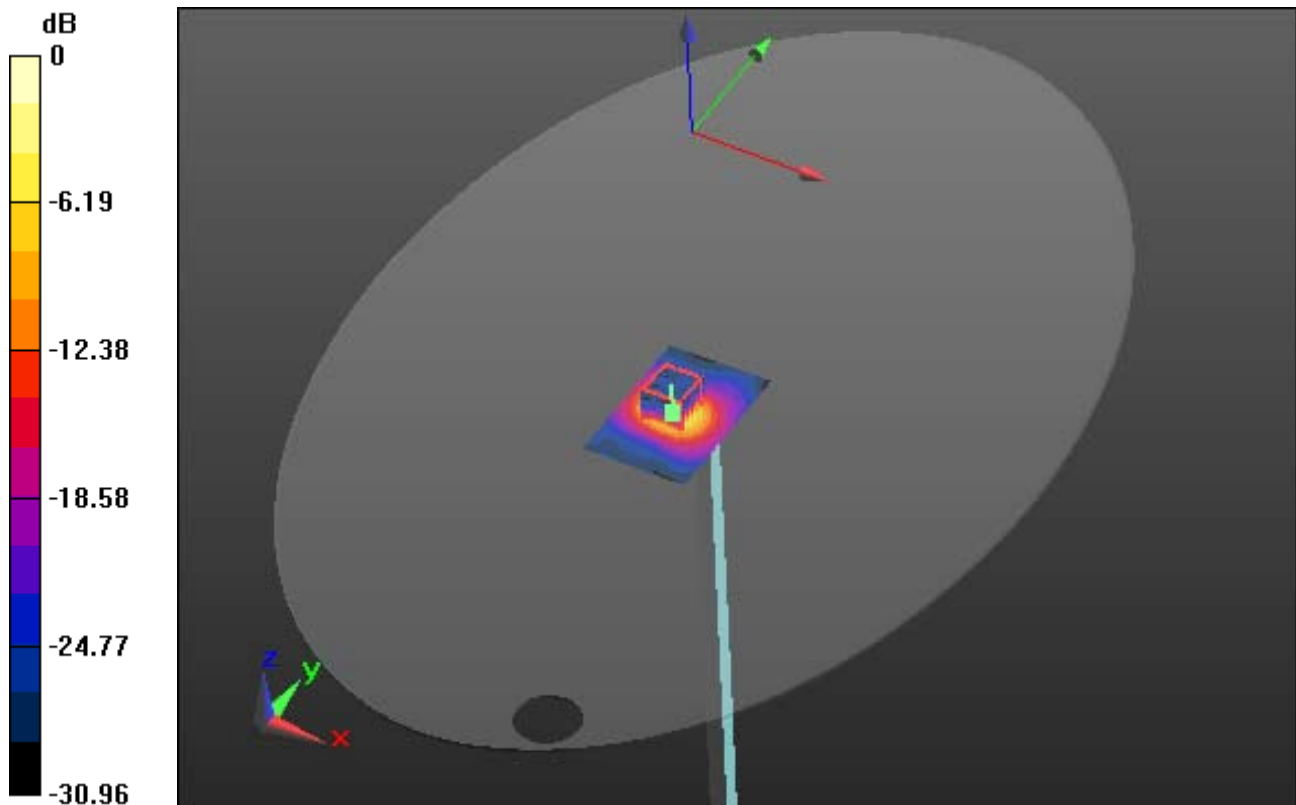
Area Scan (61x91x1): Interpolated grid: dx=10mm, dy=10mm

Zoom Scan (7x7x12)/Cube 0: Measurement grid: dx=4mm, dy=4mm, dz=2mm

Power Drift = 0.07 dB

Peak SAR (extrapolated) = 33.9 W/kg

SAR(1 g) = 7.53 W/kg; SAR(10 g) = 2.17 W/kg



0 dB = 15.4 W/kg

DT&C Co., Ltd.

DUT: Dipole 5000 MHz; Type: D5GHzV2; Serial: D5GHzV2 - SN:1212

Communication System: CW (0); Frequency: 5300 MHz; Duty Cycle: 1:1
Medium parameters used: $f = 5300$ MHz; $\sigma = 5.459$ S/m; $\epsilon_r = 49.504$; $\rho = 1000$ kg/m³
Phantom section: Flat Section

DASY5 Configuration:

Probe: EX3DV4 - SN3933; ConvF(4.49, 4.49, 4.49); Calibrated: 9/27/2016; ; Electronics: DAE4 Sn1453
Phantom: ELI v5.0_2013_10_08; Type: QDIVA001BB; Serial: 1223
Measurement SW: DASY52, Version 52.8 (8); SEMCAD X Version 14.6.10 (7331)

Test Date: 2016-11-22; Ambient Temp: 21.2; Tissue Temp: 21.5

5300 MHz System Verification

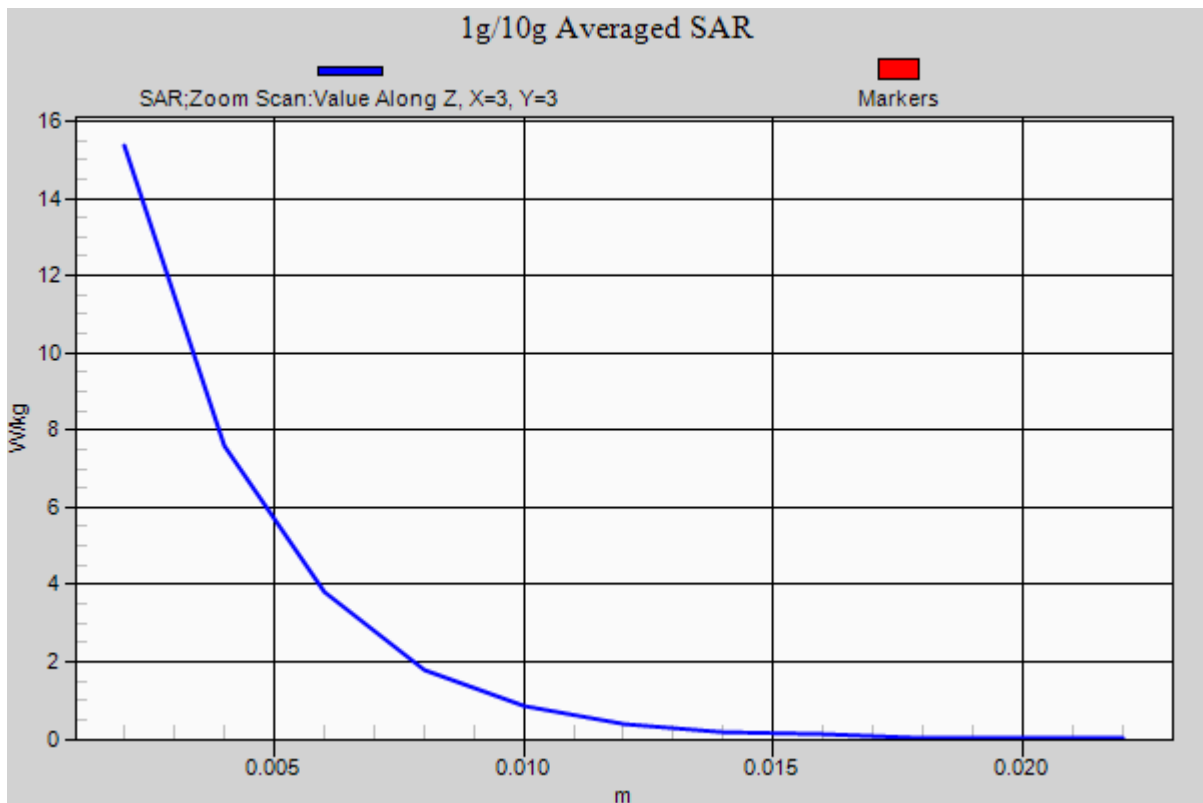
Area Scan (61x91x1): Interpolated grid: dx=10mm, dy=10mm

Zoom Scan (7x7x12)/Cube 0: Measurement grid: dx=4mm, dy=4mm, dz=2mm

Power Drift = 0.07 dB

Peak SAR (extrapolated) = 33.9 W/kg

SAR(1 g) = 7.53 W/kg; SAR(10 g) = 2.17 W/kg



DT&C Co., Ltd.

DUT: Dipole 5000 MHz; Type: D5GHzV2; Serial: D5GHzV2 - SN:1212

Communication System: CW (0); Frequency: 5600 MHz; Duty Cycle: 1:1
Medium parameters used: $f = 5600$ MHz; $\sigma = 5.128$ S/m; $\epsilon_r = 34.801$; $\rho = 1000$ kg/m³
Phantom section: Flat Section

DASY5 Configuration:

Probe: EX3DV4 - SN3933; ConvF(4.6, 4.6, 4.6); Calibrated: 9/27/2016; ; Electronics: DAE4 Sn1453
Phantom: ELI v5.0_2013_10_08; Type: QDIVA001BB; Serial: 1223
Measurement SW: DASY52, Version 52.8 (8); SEMCAD X Version 14.6.10 (7331)

Test Date: 2016-11-23; Ambient Temp: 20.6; Tissue Temp: 21.3

5600 MHz System Verification

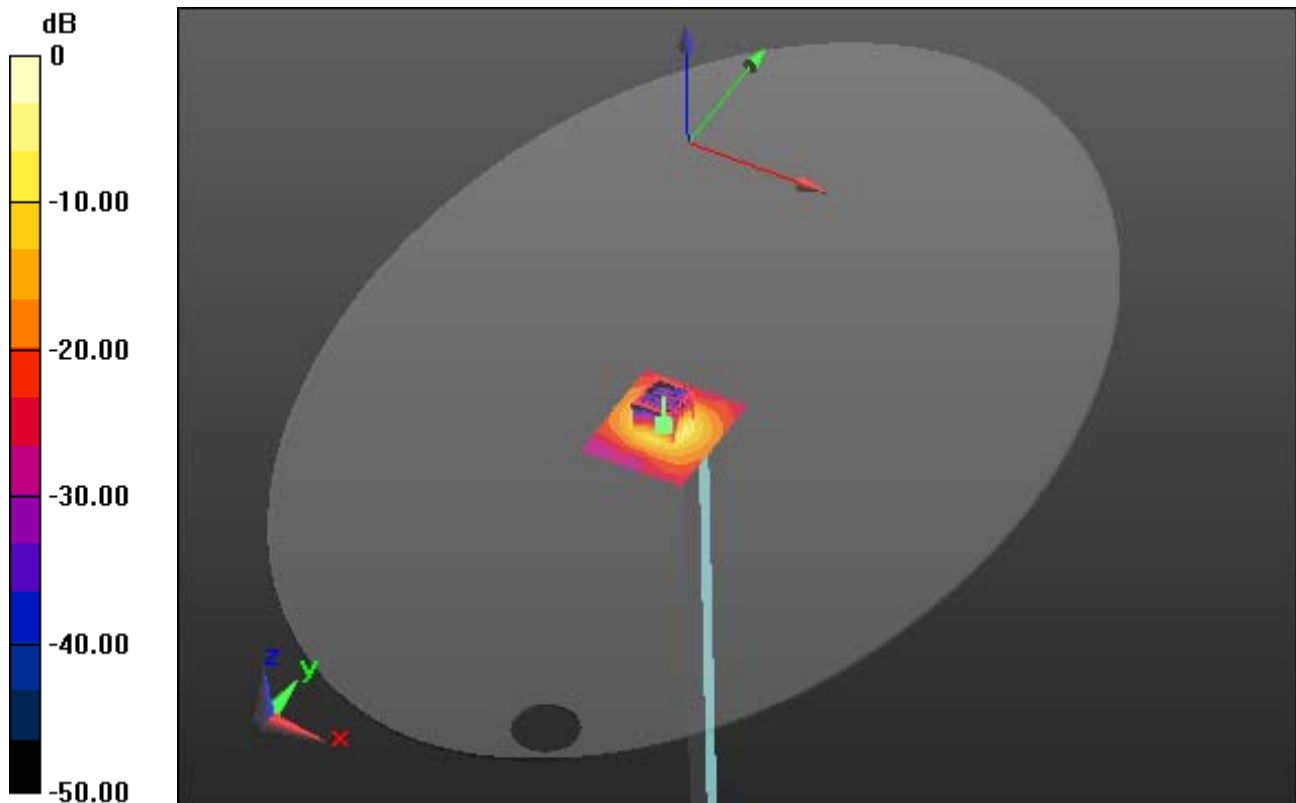
Area Scan (61x71x1): Interpolated grid: dx=10mm, dy=10mm

Zoom Scan (7x7x12)/Cube 0: Measurement grid: dx=4mm, dy=4mm, dz=2mm

Power Drift = 0.07 dB

Peak SAR (extrapolated) = 37.3 W/kg

SAR(1 g) = 8.23 W/kg; SAR(10 g) = 2.26 W/kg



0 dB = 17.8 W/kg

DT&C Co., Ltd.

DUT: Dipole 5000 MHz; Type: D5GHzV2; Serial: D5GHzV2 - SN:1212

Communication System: CW (0); Frequency: 5600 MHz; Duty Cycle: 1:1
Medium parameters used: $f = 5600$ MHz; $\sigma = 5.128$ S/m; $\epsilon_r = 34.801$; $\rho = 1000$ kg/m³
Phantom section: Flat Section

DASY5 Configuration:

Probe: EX3DV4 - SN3933; ConvF(4.6, 4.6, 4.6); Calibrated: 9/27/2016; ; Electronics: DAE4 Sn1453
Phantom: ELI v5.0_2013_10_08; Type: QDIVA001BB; Serial: 1223
Measurement SW: DASY52, Version 52.8 (8); SEMCAD X Version 14.6.10 (7331)

Test Date: 2016-11-23; Ambient Temp: 20.6; Tissue Temp: 21.3

5600 MHz System Verification

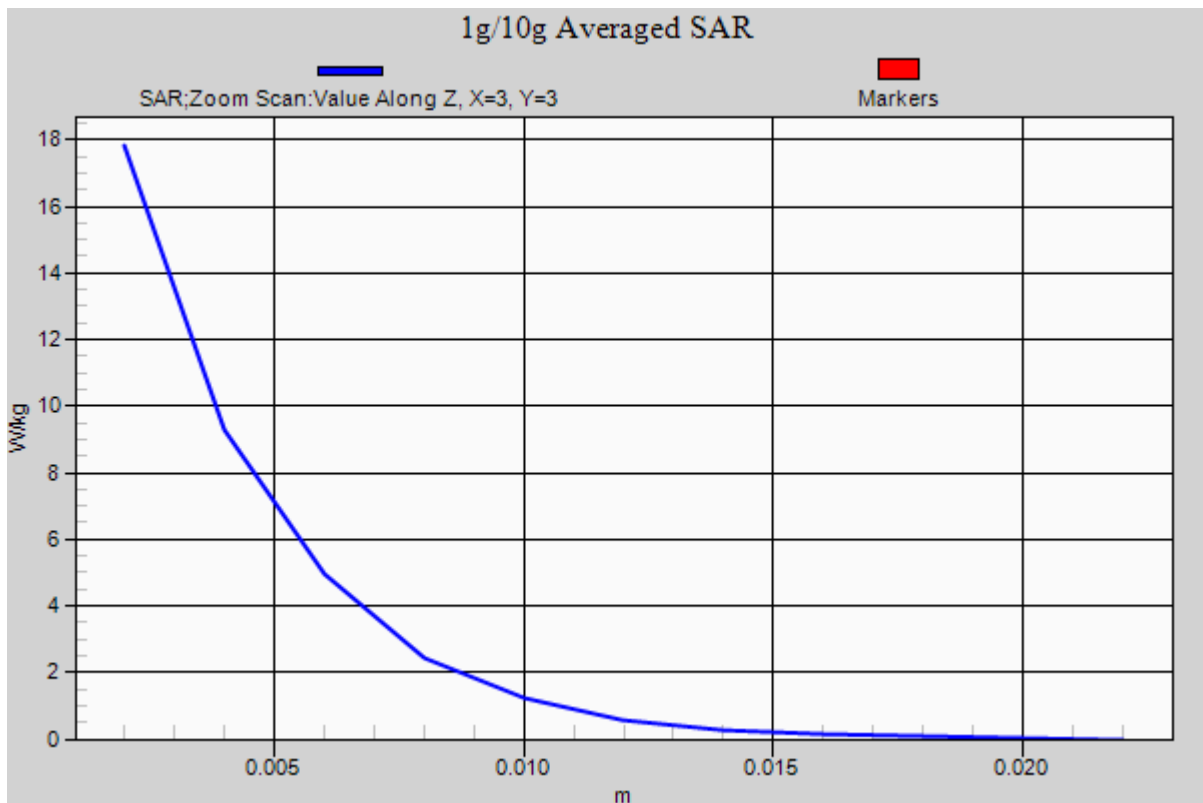
Area Scan (61x71x1): Interpolated grid: dx=10mm, dy=10mm

Zoom Scan (7x7x12)/Cube 0: Measurement grid: dx=4mm, dy=4mm, dz=2mm

Power Drift = 0.07 dB

Peak SAR (extrapolated) = 37.3 W/kg

SAR(1 g) = 8.23 W/kg; SAR(10 g) = 2.26 W/kg



DT&C Co., Ltd.

DUT: Dipole 5000 MHz; Type: D5GHzV2; Serial: D5GHzV2 - SN:1212

Communication System: CW (0); Frequency: 5600 MHz; Duty Cycle: 1:1
Medium parameters used: $f = 5600$ MHz; $\sigma = 5.761$ S/m; $\epsilon_r = 48.247$; $\rho = 1000$ kg/m³
Phantom section: Flat Section

DASY5 Configuration:

Probe: EX3DV4 - SN3933; ConvF(3.8, 3.8, 3.8); Calibrated: 9/27/2016; ; Electronics: DAE4 Sn1453
Phantom: ELI v5.0_2013_10_08; Type: QDIVA001BB; Serial: 1223
Measurement SW: DASY52, Version 52.8 (8); SEMCAD X Version 14.6.10 (7331)

Test Date: 2016-11-23; Ambient Temp: 20.6; Tissue Temp: 21.3

5600 MHz System Verification

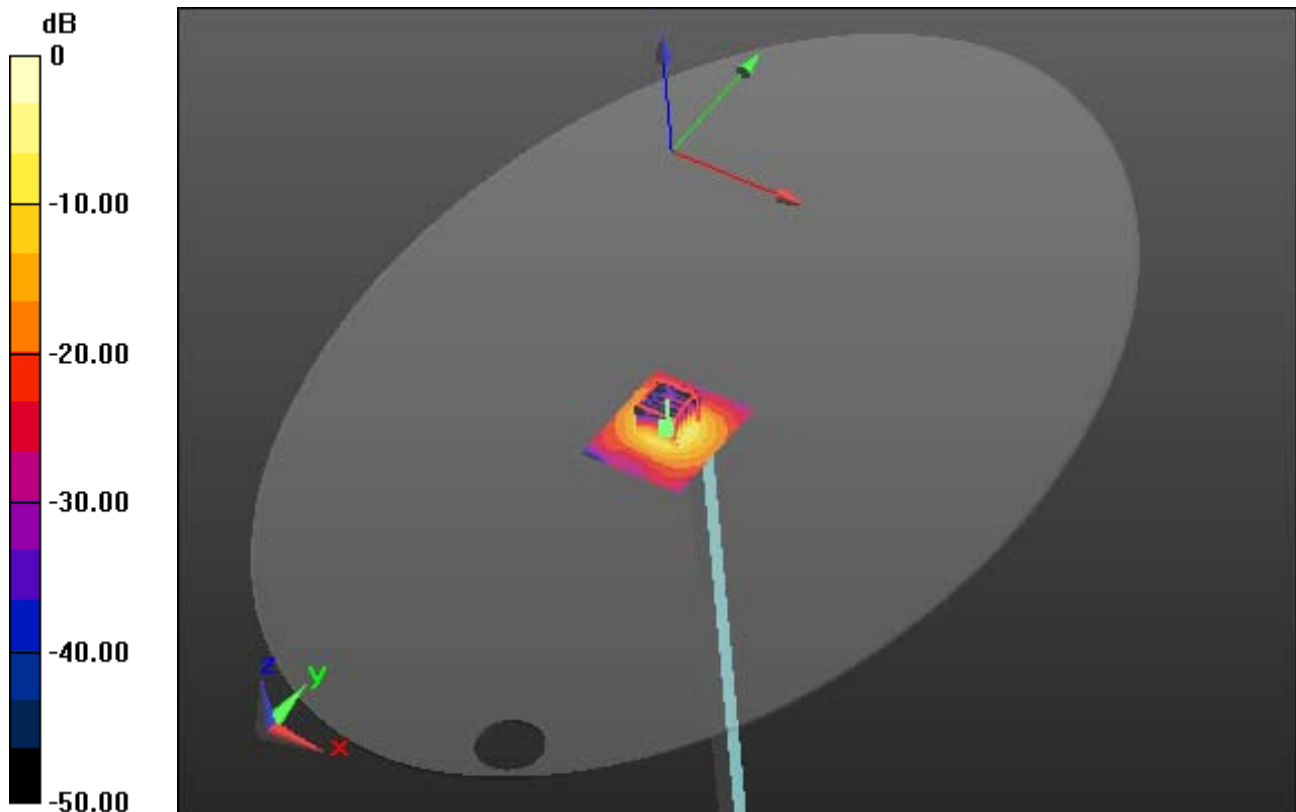
Area Scan (61x71x1): Interpolated grid: dx=10mm, dy=10mm

Zoom Scan (7x7x12)/Cube 0: Measurement grid: dx=4mm, dy=4mm, dz=2mm

Power Drift = 0.05 dB

Peak SAR (extrapolated) = 34.1 W/kg

SAR(1 g) = 8.06 W/kg; SAR(10 g) = 2.22 W/kg



0 dB = 17.4 W/kg

DT&C Co., Ltd.

DUT: Dipole 5000 MHz; Type: D5GHzV2; Serial: D5GHzV2 - SN:1212

Communication System: CW (0); Frequency: 5600 MHz; Duty Cycle: 1:1
Medium parameters used: $f = 5600$ MHz; $\sigma = 5.761$ S/m; $\epsilon_r = 48.247$; $\rho = 1000$ kg/m³
Phantom section: Flat Section

DASY5 Configuration:

Probe: EX3DV4 - SN3933; ConvF(3.8, 3.8, 3.8); Calibrated: 9/27/2016; ; Electronics: DAE4 Sn1453
Phantom: ELI v5.0_2013_10_08; Type: QDIVA001BB; Serial: 1223
Measurement SW: DASY52, Version 52.8 (8); SEMCAD X Version 14.6.10 (7331)

Test Date: 2016-11-23; Ambient Temp: 20.6; Tissue Temp: 21.3

5600 MHz System Verification

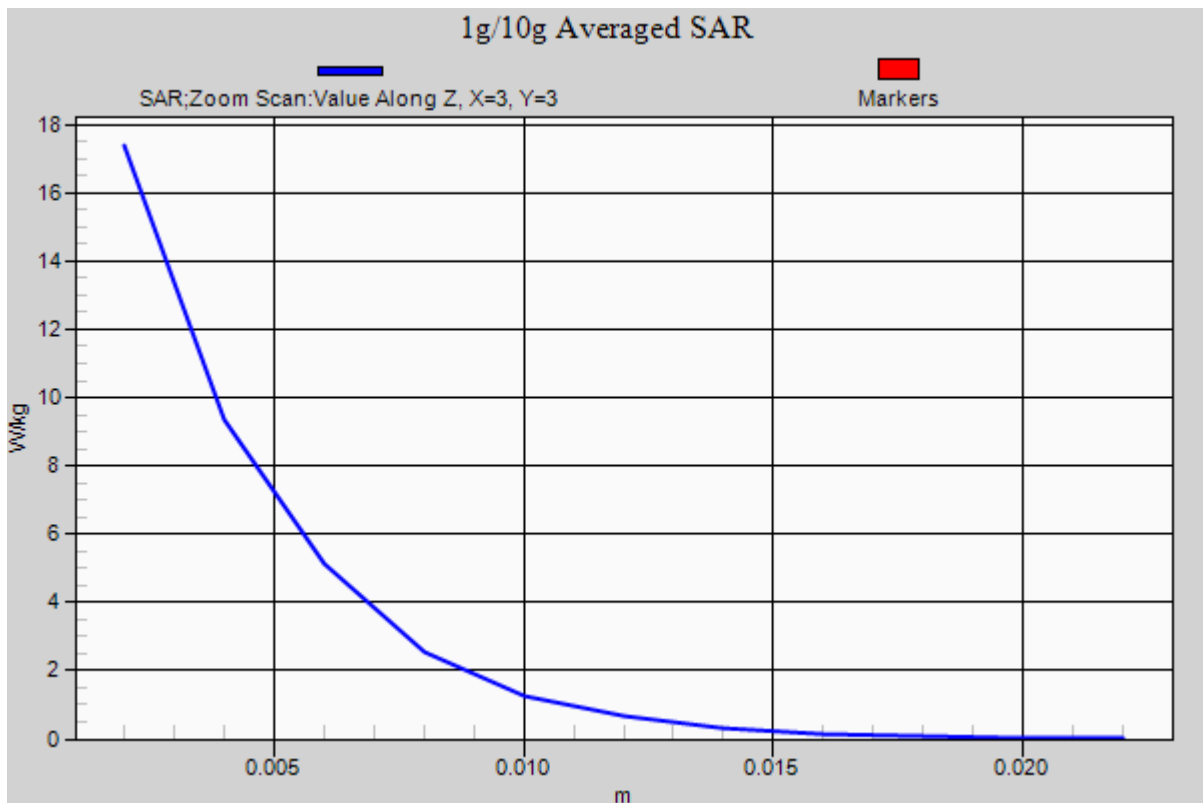
Area Scan (61x71x1): Interpolated grid: dx=10mm, dy=10mm

Zoom Scan (7x7x12)/Cube 0: Measurement grid: dx=4mm, dy=4mm, dz=2mm

Power Drift = 0.05 dB

Peak SAR (extrapolated) = 34.1 W/kg

SAR(1 g) = 8.06 W/kg; SAR(10 g) = 2.22 W/kg



DT&C Co., Ltd.

DUT: Dipole 5000 MHz; Type: D5GHzV2; Serial: D5GHzV2 - SN:1212

Communication System: CW (0); Frequency: 5800 MHz; Duty Cycle: 1:1
Medium parameters used: $f = 5800$ MHz; $\sigma = 5.38$ S/m; $\epsilon_r = 34.819$; $\rho = 1000$ kg/m³
Phantom section: Flat Section

DASY5 Configuration:

Probe: EX3DV4 - SN3933; ConvF(4.52, 4.52, 4.52); Calibrated: 9/27/2016; ; Electronics: DAE4 Sn1453
Phantom: ELI v5.0_2013_10_08; Type: QDIVA001BB; Serial: 1223
Measurement SW: DASY52, Version 52.8 (8); SEMCAD X Version 14.6.10 (7331)

Test Date: 2016-11-24; Ambient Temp: 21.5; Tissue Temp: 21.8

5800 MHz System Verification

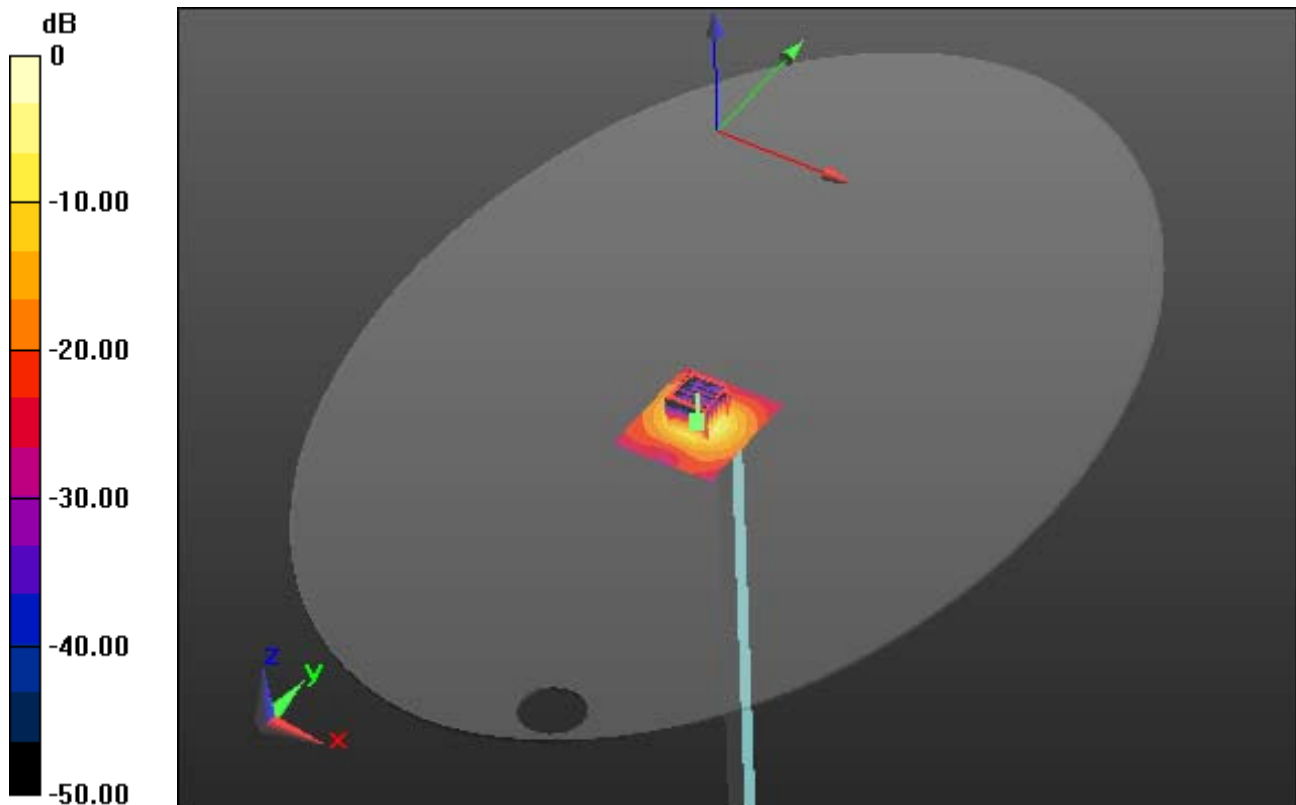
Area Scan (61x71x1): Interpolated grid: dx=10mm, dy=10mm

Zoom Scan (7x7x12)/Cube 0: Measurement grid: dx=4mm, dy=4mm, dz=2mm

Power Drift = 0.06 dB

Peak SAR (extrapolated) = 36.8 W/kg

SAR(1 g) = 7.79 W/kg; SAR(10 g) = 2.22 W/kg



0 dB = 18.1 W/kg

DT&C Co., Ltd.

DUT: Dipole 5000 MHz; Type: D5GHzV2; Serial: D5GHzV2 - SN:1212

Communication System: CW (0); Frequency: 5800 MHz; Duty Cycle: 1:1
Medium parameters used: $f = 5800$ MHz; $\sigma = 5.38$ S/m; $\epsilon_r = 34.819$; $\rho = 1000$ kg/m³
Phantom section: Flat Section

DASY5 Configuration:

Probe: EX3DV4 - SN3933; ConvF(4.52, 4.52, 4.52); Calibrated: 9/27/2016; ; Electronics: DAE4 Sn1453
Phantom: ELI v5.0_2013_10_08; Type: QDIVA001BB; Serial: 1223
Measurement SW: DASY52, Version 52.8 (8); SEMCAD X Version 14.6.10 (7331)

Test Date: 2016-11-24; Ambient Temp: 21.5; Tissue Temp: 21.8

5800 MHz System Verification

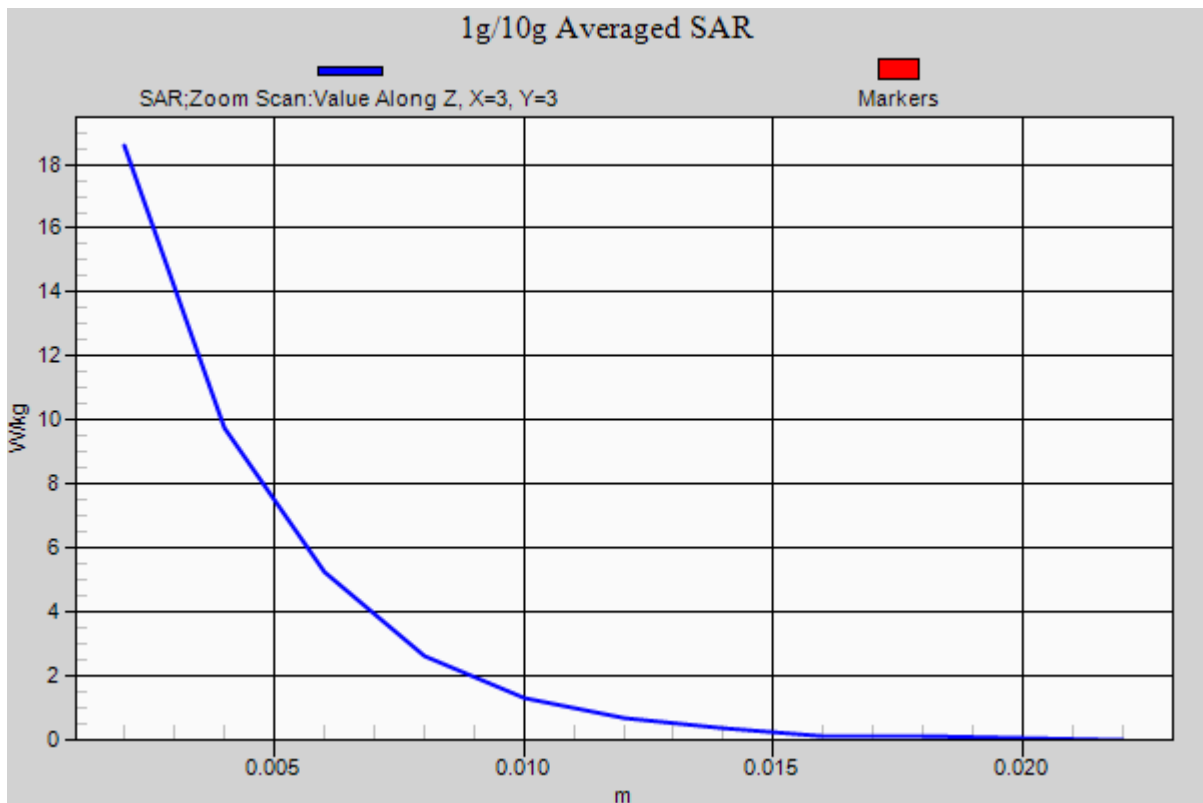
Area Scan (61x71x1): Interpolated grid: dx=10mm, dy=10mm

Zoom Scan (7x7x12)/Cube 0: Measurement grid: dx=4mm, dy=4mm, dz=2mm

Power Drift = 0.06 dB

Peak SAR (extrapolated) = 36.8 W/kg

SAR(1 g) = 7.79 W/kg; SAR(10 g) = 2.22 W/kg



DT&C Co., Ltd.

DUT: Dipole 5000 MHz; Type: D5GHzV2; Serial: D5GHzV2 - SN:1212

Communication System: CW (0); Frequency: 5800 MHz; Duty Cycle: 1:1
Medium parameters used: $f = 5800$ MHz; $\sigma = 6.072$ S/m; $\epsilon_r = 48.266$; $\rho = 1000$ kg/m³
Phantom section: Flat Section

DASY5 Configuration:

Probe: EX3DV4 - SN3933; ConvF(3.95, 3.95, 3.95); Calibrated: 9/27/2016; ; Electronics: DAE4 Sn1453
Phantom: ELI v5.0_2013_10_08; Type: QDIVA001BB; Serial: 1223
Measurement SW: DASY52, Version 52.8 (8); SEMCAD X Version 14.6.10 (7331)

Test Date: 2016-11-24; Ambient Temp: 21.5; Tissue Temp: 21.8

5800 MHz System Verification

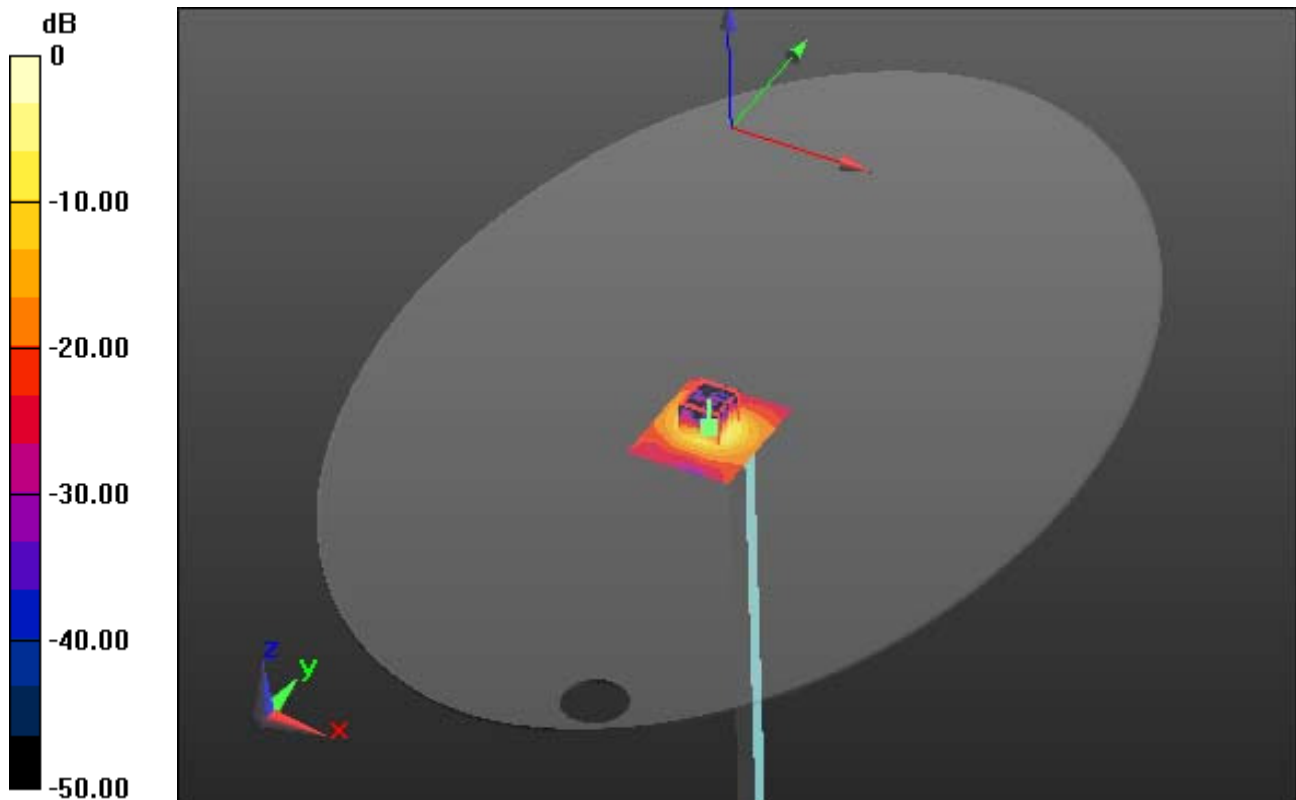
Area Scan (61x71x1): Interpolated grid: dx=10mm, dy=10mm

Zoom Scan (7x7x12)/Cube 0: Measurement grid: dx=4mm, dy=4mm, dz=2mm

Power Drift = 0.08 dB

Peak SAR (extrapolated) = 36.2 W/kg

SAR(1 g) = 8 W/kg; SAR(10 g) = 2.2 W/kg



0 dB = 17.5 W/kg

DT&C Co., Ltd.

DUT: Dipole 5000 MHz; Type: D5GHzV2; Serial: D5GHzV2 - SN:1212

Communication System: CW (0); Frequency: 5800 MHz; Duty Cycle: 1:1
Medium parameters used: $f = 5800$ MHz; $\sigma = 6.072$ S/m; $\epsilon_r = 48.266$; $\rho = 1000$ kg/m³
Phantom section: Flat Section

DASY5 Configuration:

Probe: EX3DV4 - SN3933; ConvF(3.95, 3.95, 3.95); Calibrated: 9/27/2016; ; Electronics: DAE4 Sn1453
Phantom: ELI v5.0_2013_10_08; Type: QDIVA001BB; Serial: 1223
Measurement SW: DASY52, Version 52.8 (8); SEMCAD X Version 14.6.10 (7331)

Test Date: 2016-11-24; Ambient Temp: 21.5; Tissue Temp: 21.8

5800 MHz System Verification

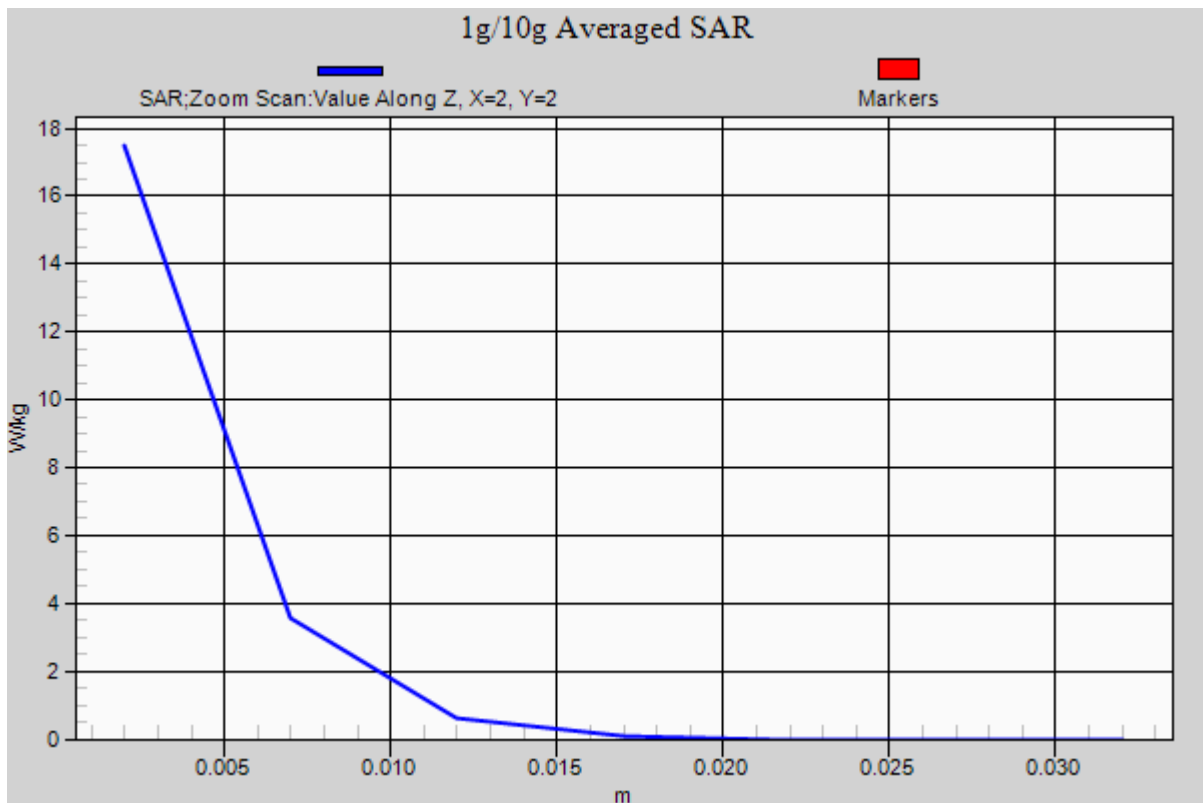
Area Scan (61x71x1): Interpolated grid: dx=10mm, dy=10mm

Zoom Scan (7x7x12)/Cube 0: Measurement grid: dx=4mm, dy=4mm, dz=2mm

Power Drift = 0.08 dB

Peak SAR (extrapolated) = 36.2 W/kg

SAR(1 g) = 8 W/kg; SAR(10 g) = 2.2 W/kg



DT&C Co., Ltd.

DUT: 14HJ701D; Type: X-ray Detector

Communication System: W-LAN (0); Frequency: 2462 MHz; Duty Cycle: 1:1
Medium parameters used: $f = 2462$ MHz; $\sigma = 1.833$ S/m; $\epsilon_r = 38.992$; $\rho = 1000$ kg/m³
Phantom section: Flat Section

DASY5 Configuration:

Probe: EX3DV4 - SN3933; ConvF(7.55, 7.55, 7.55); Calibrated: 9/27/2016; Electronics: DAE4 Sn1453
Phantom: ELI v5.0_2013_10_08; Type: QDIVA001BB; Serial: 1223
Measurement SW: DASY52, Version 52.8 (8); SEMCAD X Version 14.6.10 (7331)

Test Date: 2016-11-21; Ambient Temp; 20.3; Tissue Temp: 20.9

Touch from Body, Front, W-LAN(2.4G 802.11b) Ch. 11, Ant Internal, Ant.1

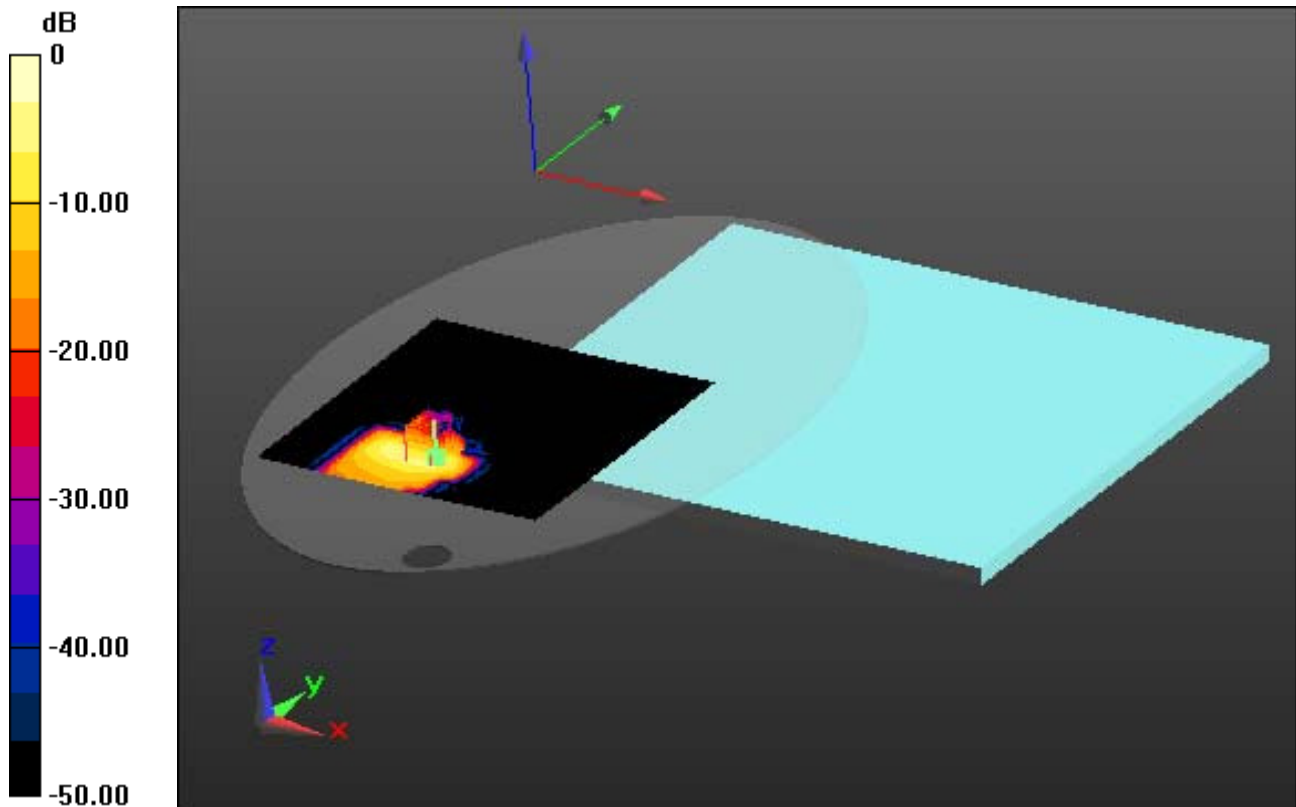
Area Scan (201x201x1): Interpolated grid: dx=12mm, dy=12mm

Zoom Scan (7x7x7)/Cube 0: Measurement grid: dx=5mm, dy=5mm, dz=5mm

Power Drift = 0.08 dB

Peak SAR (extrapolated) = 0.576 W/kg

SAR(1 g) = 0.224 W/kg; SAR(10 g) = 0.093 W/kg



0 dB = 0.372 W/kg

DT&C Co., Ltd.

DUT: 14HJ701D; Type: X-ray Detector

Communication System: W-LAN (0); Frequency: 2462 MHz; Duty Cycle: 1:1
Medium parameters used: $f = 2462$ MHz; $\sigma = 1.833$ S/m; $\epsilon_r = 38.992$; $\rho = 1000$ kg/m³
Phantom section: Flat Section

DASY5 Configuration:

Probe: EX3DV4 - SN3933; ConvF(7.55, 7.55, 7.55); Calibrated: 9/27/2016; Electronics: DAE4 Sn1453
Phantom: ELI v5.0_2013_10_08; Type: QDIVA001BB; Serial: 1223
Measurement SW: DASY52, Version 52.8 (8); SEMCAD X Version 14.6.10 (7331)

Test Date: 2016-11-21; Ambient Temp; 20.3; Tissue Temp: 20.9

Touch from Body, Front, W-LAN(2.4G 802.11b) Ch. 11, Ant Internal, Ant.1

With Enlarge Plot image

Area Scan (201x201x1): Interpolated grid: dx=12mm, dy=12mm

Zoom Scan (7x7x7)/Cube 0: Measurement grid: dx=5mm, dy=5mm, dz=5mm

Power Drift = 0.08 dB

Peak SAR (extrapolated) = 0.576 W/kg

SAR(1 g) = 0.224 W/kg; SAR(10 g) = 0.093 W/kg

The figure is a 2D color plot representing the SAR field distribution. The vertical axis on the left is labeled 'dB' and ranges from 0 to -50.00 in increments of 10.00. The plot shows a central region of high intensity (yellow/orange) that transitions through red and blue to black at the edges. A 3D coordinate system with x, y, and z axes is shown in the bottom left corner of the plot area. The plot is set against a dark background with a light blue area at the bottom right.

0 dB = 0.372 W/kg

A1

DT&C Co., Ltd.

DUT: 14HJ701D; Type: X-ray Detector

Communication System: W-LAN (0); Frequency: 2462 MHz; Duty Cycle: 1:1
Medium parameters used: $f = 2462$ MHz; $\sigma = 1.833$ S/m; $\epsilon_r = 38.992$; $\rho = 1000$ kg/m³
Phantom section: Flat Section

DASY5 Configuration:

Probe: EX3DV4 - SN3933; ConvF(7.55, 7.55, 7.55); Calibrated: 9/27/2016; Electronics: DAE4 Sn1453
Phantom: ELI v5.0_2013_10_08; Type: QDIVA001BB; Serial: 1223
Measurement SW: DASY52, Version 52.8 (8); SEMCAD X Version 14.6.10 (7331)

Test Date: 2016-11-21; Ambient Temp; 20.3; Tissue Temp: 20.9

Touch from Body, Front, W-LAN(2.4G 802.11b) Ch. 11, Ant Internal, Ant.1

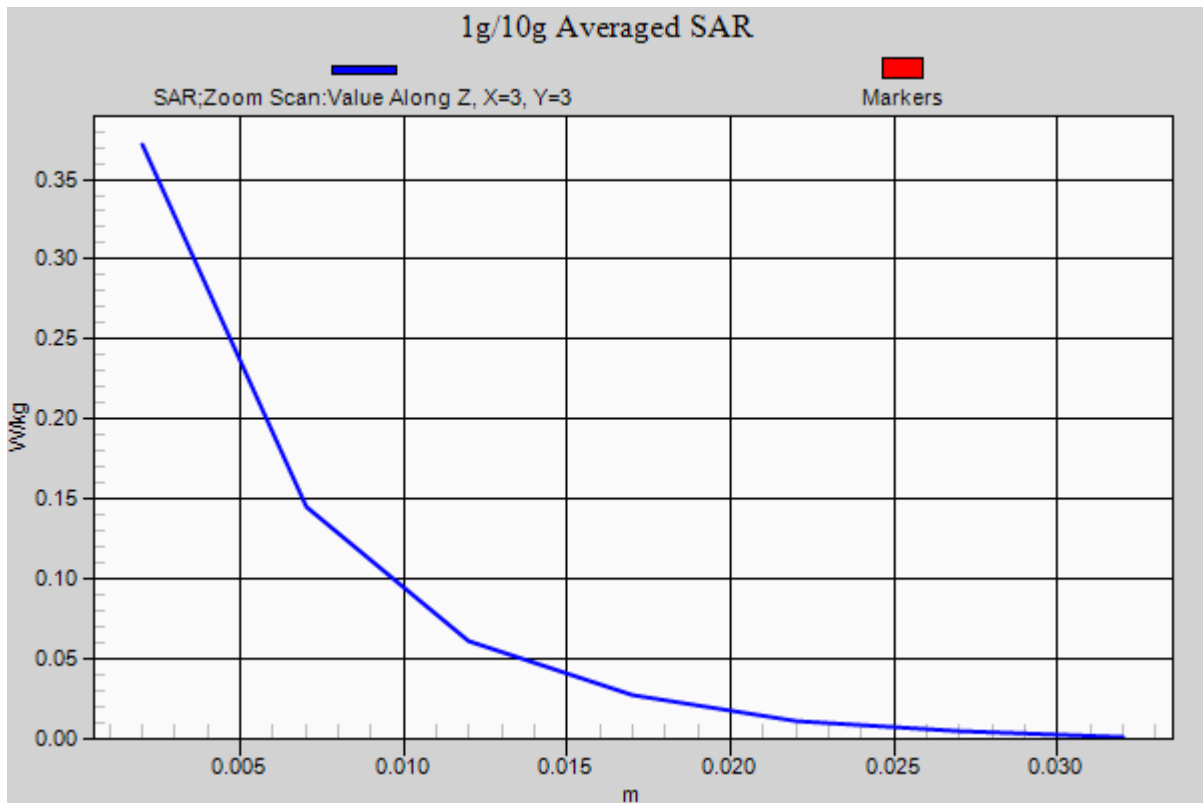
Area Scan (201x201x1): Interpolated grid: dx=12mm, dy=12mm

Zoom Scan (7x7x7)/Cube 0: Measurement grid: dx=5mm, dy=5mm, dz=5mm

Power Drift = 0.08 dB

Peak SAR (extrapolated) = 0.576 W/kg

SAR(1 g) = 0.224 W/kg; SAR(10 g) = 0.093 W/kg



DT&C Co., Ltd.

DUT: 14HJ701D; Type: X-ray Detector

Communication System: W-LAN 5G (0); Frequency: 5270 MHz; Duty Cycle: 1:1
Medium parameters used: $f = 5270$ MHz; $\sigma = 4.796$ S/m; $\epsilon_r = 36.199$; $\rho = 1000$ kg/m³
Phantom section: Flat Section

DASY5 Configuration:

Probe: EX3DV4 - SN3933; ConvF(5.11, 5.11, 5.11); Calibrated: 9/27/2016; Electronics: DAE4 Sn1453
Phantom: ELI v5.0_2013_10_08; Type: QDIVA001BB; Serial: 1223
Measurement SW: DASY52, Version 52.8 (8); SEMCAD X Version 14.6.10 (7331)

Test Date: 2016-11-22; Ambient Temp; 21.2; Tissue Temp: 21.5

Touch from Body, Front, W-LAN(5.3G 802.11ac VHT40) Ch. 54, Ant Internal, Ant.2

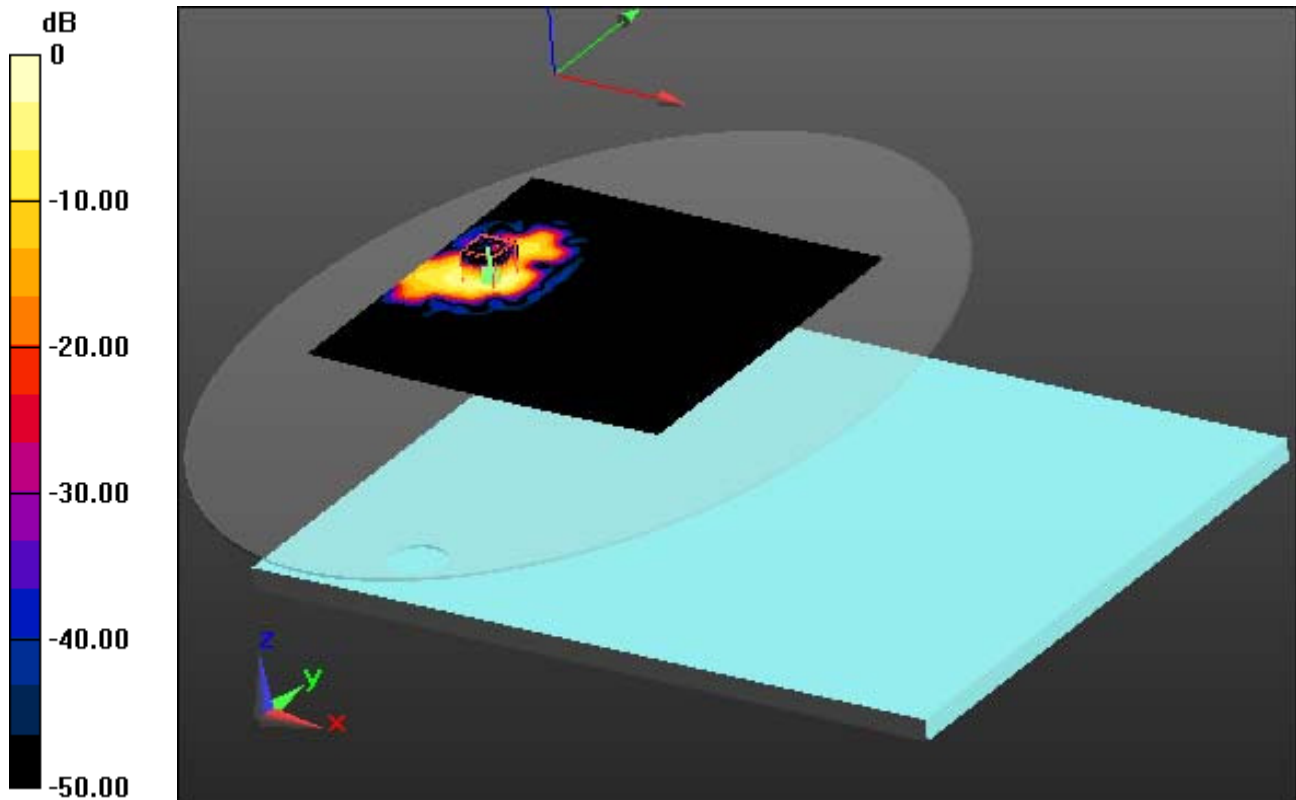
Area Scan (161x161x1): Interpolated grid: dx=10mm, dy=10mm

Zoom Scan (7x7x12)/Cube 0: Measurement grid: dx=4mm, dy=4mm, dz=2mm

Power Drift = 0.02 dB

Peak SAR (extrapolated) = 1.09 W/kg

SAR(1 g) = 0.266 W/kg; SAR(10 g) = 0.091 W/kg



0 dB = 0.509 W/kg

DT&C Co., Ltd.

DUT: 14HJ701D; Type: X-ray Detector

Communication System: W-LAN 5G (0); Frequency: 5270 MHz; Duty Cycle: 1:1
Medium parameters used: $f = 5270$ MHz; $\sigma = 4.796$ S/m; $\epsilon_r = 36.199$; $\rho = 1000$ kg/m³
Phantom section: Flat Section

DASY5 Configuration:

Probe: EX3DV4 - SN3933; ConvF(5.11, 5.11, 5.11); Calibrated: 9/27/2016; Electronics: DAE4 Sn1453
Phantom: ELI v5.0_2013_10_08; Type: QDIVA001BB; Serial: 1223
Measurement SW: DASY52, Version 52.8 (8); SEMCAD X Version 14.6.10 (7331)

Test Date: 2016-11-22; Ambient Temp; 21.2; Tissue Temp: 21.5

Touch from Body, Front, W-LAN(5.3G 802.11ac VHT40) Ch. 54, Ant Internal, Ant.2

With Enlarge Plot image

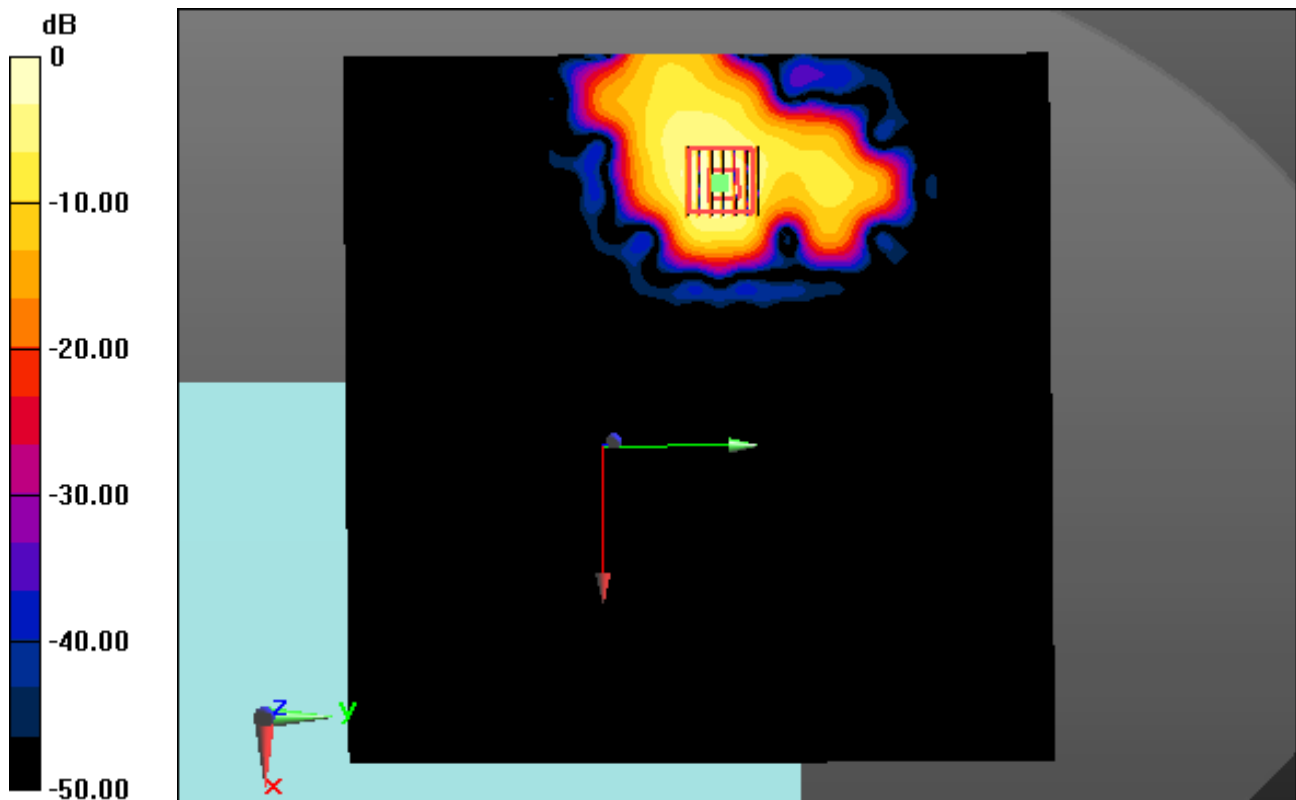
Area Scan (161x161x1): Interpolated grid: dx=10mm, dy=10mm

Zoom Scan (7x7x12)/Cube 0: Measurement grid: dx=4mm, dy=4mm, dz=2mm

Power Drift = 0.02 dB

Peak SAR (extrapolated) = 1.09 W/kg

SAR(1 g) = 0.266 W/kg; SAR(10 g) = 0.091 W/kg



0 dB = 0.509 W/kg

DT&C Co., Ltd.

DUT: 14HJ701D; Type: X-ray Detector

Communication System: W-LAN 5G (0); Frequency: 5270 MHz; Duty Cycle: 1:1
Medium parameters used: $f = 5270$ MHz; $\sigma = 4.796$ S/m; $\epsilon_r = 36.199$; $\rho = 1000$ kg/m³
Phantom section: Flat Section

DASY5 Configuration:

Probe: EX3DV4 - SN3933; ConvF(5.11, 5.11, 5.11); Calibrated: 9/27/2016; Electronics: DAE4 Sn1453
Phantom: ELI v5.0_2013_10_08; Type: QDIVA001BB; Serial: 1223
Measurement SW: DASY52, Version 52.8 (8); SEMCAD X Version 14.6.10 (7331)

Test Date: 2016-11-22; Ambient Temp; 21.2; Tissue Temp: 21.5

Touch from Body, Front, W-LAN(5.3G 802.11ac VHT40) Ch. 54, Ant Internal, Ant.2

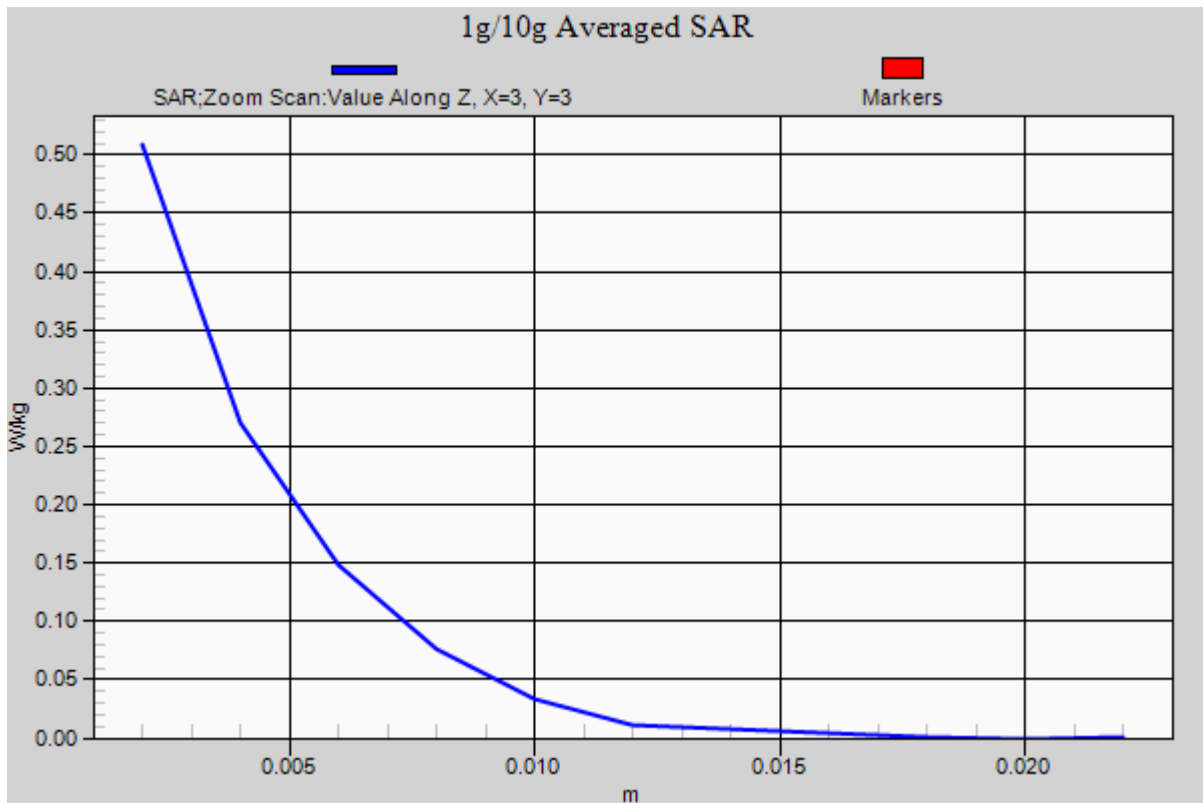
Area Scan (161x161x1): Interpolated grid: dx=10mm, dy=10mm

Zoom Scan (7x7x12)/Cube 0: Measurement grid: dx=4mm, dy=4mm, dz=2mm

Power Drift = 0.02 dB

Peak SAR (extrapolated) = 1.09 W/kg

SAR(1 g) = 0.266 W/kg; SAR(10 g) = 0.091 W/kg



DT&C Co., Ltd.

DUT: 14HJ701D; Type: X-ray Detector

Communication System: W-LAN 5G (0); Frequency: 5690 MHz; Duty Cycle: 1:1
Medium parameters used: $f = 5690$ MHz; $\sigma = 5.227$ S/m; $\epsilon_r = 34.651$; $\rho = 1000$ kg/m³
Phantom section: Flat Section

DASY5 Configuration:

Probe: EX3DV4 - SN3933; ConvF(4.6, 4.6, 4.6); Calibrated: 9/27/2016; Electronics: DAE4 Sn1453
Phantom: ELI v5.0_2013_10_08; Type: QDIVA001BB; Serial: 1223
Measurement SW: DASY52, Version 52.8 (8); SEMCAD X Version 14.6.10 (7331)

Test Date: 2016-11-23; Ambient Temp; 20.6; Tissue Temp: 21.3

Touch from Body, Front, W-LAN(5.6G 802.11ac VHT80) Ch. 138, Ant Internal, Ant.1

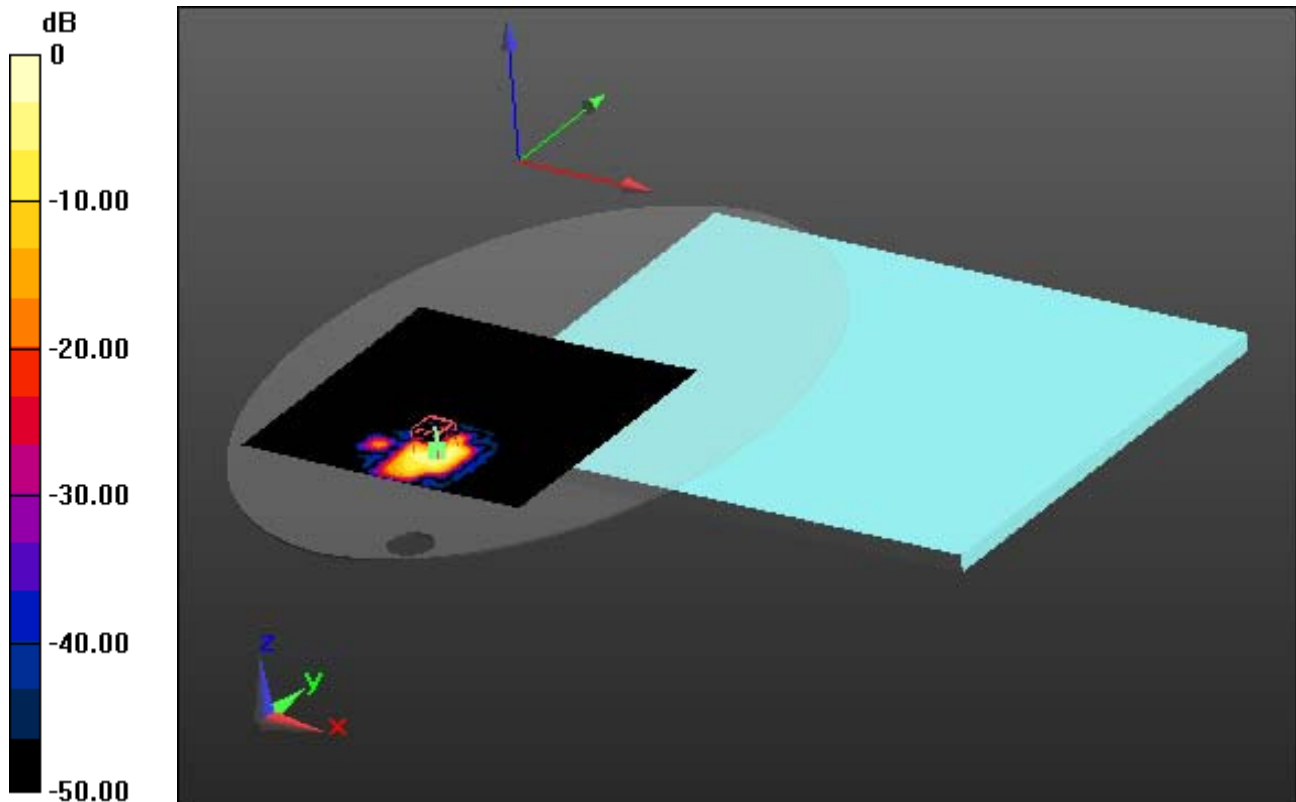
Area Scan (161x161x1): Interpolated grid: dx=10mm, dy=10mm

Zoom Scan (7x7x12)/Cube 0: Measurement grid: dx=4mm, dy=4mm, dz=2mm

Power Drift = 0.03 dB

Peak SAR (extrapolated) = 1.37 W/kg

SAR(1 g) = 0.336 W/kg; SAR(10 g) = 0.112 W/kg



0 dB = 0.640 W/kg

DT&C Co., Ltd.

DUT: 14HJ701D; Type: X-ray Detector

Communication System: W-LAN 5G (0); Frequency: 5690 MHz; Duty Cycle: 1:1
Medium parameters used: $f = 5690$ MHz; $\sigma = 5.227$ S/m; $\epsilon_r = 34.651$; $\rho = 1000$ kg/m³
Phantom section: Flat Section

DASY5 Configuration:

Probe: EX3DV4 - SN3933; ConvF(4.6, 4.6, 4.6); Calibrated: 9/27/2016; Electronics: DAE4 Sn1453
Phantom: ELI v5.0_2013_10_08; Type: QDIVA001BB; Serial: 1223
Measurement SW: DASY52, Version 52.8 (8); SEMCAD X Version 14.6.10 (7331)

Test Date: 2016-11-23; Ambient Temp; 20.6; Tissue Temp: 21.3

Touch from Body, Front, W-LAN(5.6G 802.11ac VHT80) Ch. 138, Ant Internal, Ant.1

With Enlarge Plot image

Area Scan (161x161x1): Interpolated grid: dx=10mm, dy=10mm

Zoom Scan (7x7x12)/Cube 0: Measurement grid: dx=4mm, dy=4mm, dz=2mm

Power Drift = 0.03 dB

Peak SAR (extrapolated) = 1.37 W/kg

SAR(1 g) = 0.336 W/kg; SAR(10 g) = 0.112 W/kg

The figure is a 2D color plot representing the SAR field distribution. The vertical axis on the left is labeled 'dB' and ranges from 0 at the top to -50.00 at the bottom, with major ticks at 0, -10.00, -20.00, -30.00, -40.00, and -50.00. The plot shows a central high-intensity region (yellow/red) surrounded by lower intensity regions (blue/purple). A coordinate system (x, y, z) is visible at the bottom left. A zoomed-in view of the central region is shown with a red arrow pointing to the right. A light blue rectangular area is visible on the right side of the plot.

0 dB = 0.640 W/kg

A3

DT&C Co., Ltd.

DUT: 14HJ701D; Type: X-ray Detector

Communication System: W-LAN 5G (0); Frequency: 5690 MHz; Duty Cycle: 1:1
Medium parameters used: $f = 5690$ MHz; $\sigma = 5.227$ S/m; $\epsilon_r = 34.651$; $\rho = 1000$ kg/m³
Phantom section: Flat Section

DASY5 Configuration:

Probe: EX3DV4 - SN3933; ConvF(4.6, 4.6, 4.6); Calibrated: 9/27/2016; Electronics: DAE4 Sn1453
Phantom: ELI v5.0_2013_10_08; Type: QDIVA001BB; Serial: 1223
Measurement SW: DASY52, Version 52.8 (8); SEMCAD X Version 14.6.10 (7331)

Test Date: 2016-11-23; Ambient Temp; 20.6; Tissue Temp: 21.3

Touch from Body, Front, W-LAN(5.6G 802.11ac VHT80) Ch. 138, Ant Internal, Ant.1

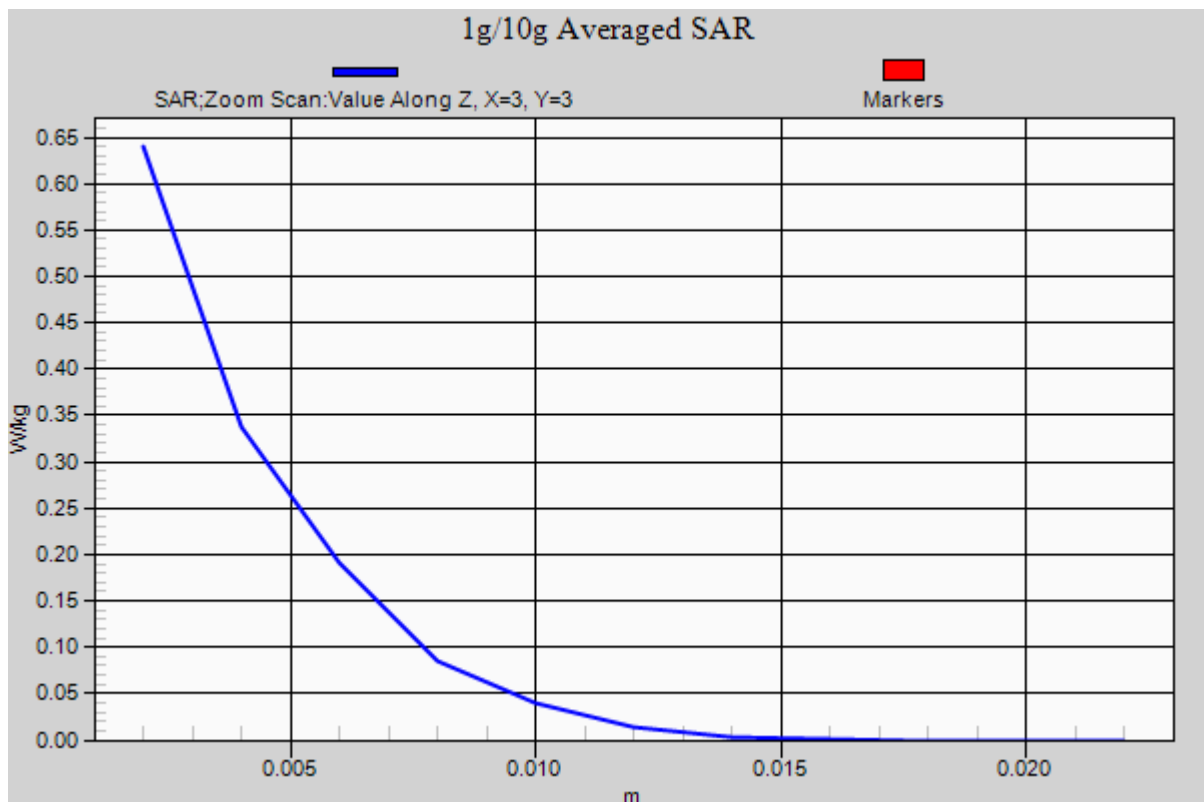
Area Scan (161x161x1): Interpolated grid: dx=10mm, dy=10mm

Zoom Scan (7x7x12)/Cube 0: Measurement grid: dx=4mm, dy=4mm, dz=2mm

Power Drift = 0.03 dB

Peak SAR (extrapolated) = 1.37 W/kg

SAR(1 g) = 0.336 W/kg; SAR(10 g) = 0.112 W/kg



DT&C Co., Ltd.

DUT: 14HJ701D; Type: X-ray Detector

Communication System: W-LAN 5G (0); Frequency: 5785 MHz; Duty Cycle: 1:1
Medium parameters used: $f = 5785$ MHz; $\sigma = 5.361$ S/m; $\epsilon_r = 34.851$; $\rho = 1000$ kg/m³
Phantom section: Flat Section

DASY5 Configuration:

Probe: EX3DV4 - SN3933; ConvF(4.52, 4.52, 4.52); Calibrated: 9/27/2016; Electronics: DAE4 Sn1453
Phantom: ELI v5.0_2013_10_08; Type: QDIVA001BB; Serial: 1223
Measurement SW: DASY52, Version 52.8 (8); SEMCAD X Version 14.6.10 (7331)

Test Date: 2016-11-24; Ambient Temp; 21.5; Tissue Temp: 21.8

Touch from Body, Front, W-LAN(5.8G 802.11a) Ch. 157, Ant Internal, Ant.1

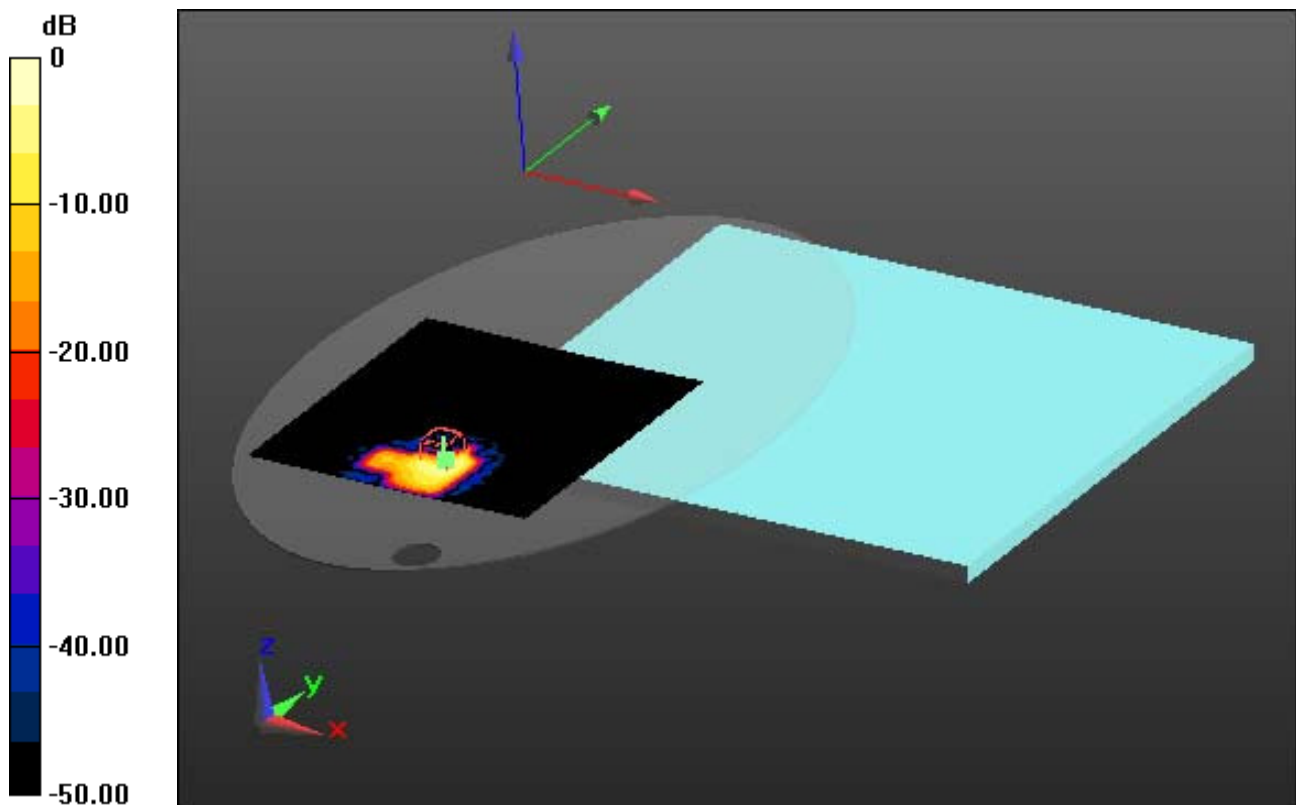
Area Scan (161x161x1): Interpolated grid: dx=10mm, dy=10mm

Zoom Scan (7x7x12)/Cube 0: Measurement grid: dx=4mm, dy=4mm, dz=2mm

Power Drift = 0.00 dB

Peak SAR (extrapolated) = 1.58 W/kg

SAR(1 g) = 0.366 W/kg; SAR(10 g) = 0.121 W/kg



0 dB = 0.723 W/kg

DT&C Co., Ltd.

DUT: 14HJ701D; Type: X-ray Detector

Communication System: W-LAN 5G (0); Frequency: 5785 MHz; Duty Cycle: 1:1
Medium parameters used: $f = 5785$ MHz; $\sigma = 5.361$ S/m; $\epsilon_r = 34.851$; $\rho = 1000$ kg/m³
Phantom section: Flat Section

DASY5 Configuration:

Probe: EX3DV4 - SN3933; ConvF(4.52, 4.52, 4.52); Calibrated: 9/27/2016; Electronics: DAE4 Sn1453
Phantom: ELI v5.0_2013_10_08; Type: QDIVA001BB; Serial: 1223
Measurement SW: DASY52, Version 52.8 (8); SEMCAD X Version 14.6.10 (7331)

Test Date: 2016-11-24; Ambient Temp; 21.5; Tissue Temp: 21.8

Touch from Body, Front, W-LAN(5.8G 802.11a) Ch. 157, Ant Internal, Ant.1

With Enlarge Plot image

Area Scan (161x161x1): Interpolated grid: dx=10mm, dy=10mm

Zoom Scan (7x7x12)/Cube 0: Measurement grid: dx=4mm, dy=4mm, dz=2mm

Power Drift = 0.00 dB

Peak SAR (extrapolated) = 1.58 W/kg

SAR(1 g) = 0.366 W/kg; SAR(10 g) = 0.121 W/kg

The figure is a 2D heatmap representing the Specific Absorption Rate (SAR) distribution. On the left side, there is a vertical color scale labeled 'dB' ranging from 0 (yellow) at the top to -50.00 (black) at the bottom, with intermediate markers at -10.00, -20.00, -30.00, and -40.00. The main plot area shows a central region of high SAR (yellow/orange) that transitions through red, purple, and blue to black as it moves away from the center. A white grid is overlaid on the central high-SAR region. To the right of the main heatmap, there is a small 3D coordinate system with a red arrow pointing down (labeled 'x'), a green arrow pointing right (labeled 'y'), and a blue dot at the origin. The background of the plot is dark grey, with a light blue area on the right side.

0 dB = 0.723 W/kg

A4

DT&C Co., Ltd.

DUT: 14HJ701D; Type: X-ray Detector

Communication System: W-LAN 5G (0); Frequency: 5785 MHz; Duty Cycle: 1:1
Medium parameters used: $f = 5785$ MHz; $\sigma = 5.361$ S/m; $\epsilon_r = 34.851$; $\rho = 1000$ kg/m³
Phantom section: Flat Section

DASY5 Configuration:

Probe: EX3DV4 - SN3933; ConvF(4.52, 4.52, 4.52); Calibrated: 9/27/2016; Electronics: DAE4 Sn1453
Phantom: ELI v5.0_2013_10_08; Type: QDIVA001BB; Serial: 1223
Measurement SW: DASY52, Version 52.8 (8); SEMCAD X Version 14.6.10 (7331)

Test Date: 2016-11-24; Ambient Temp; 21.5; Tissue Temp: 21.8

Touch from Body, Front, W-LAN(5.8G 802.11a) Ch. 157, Ant Internal, Ant.1

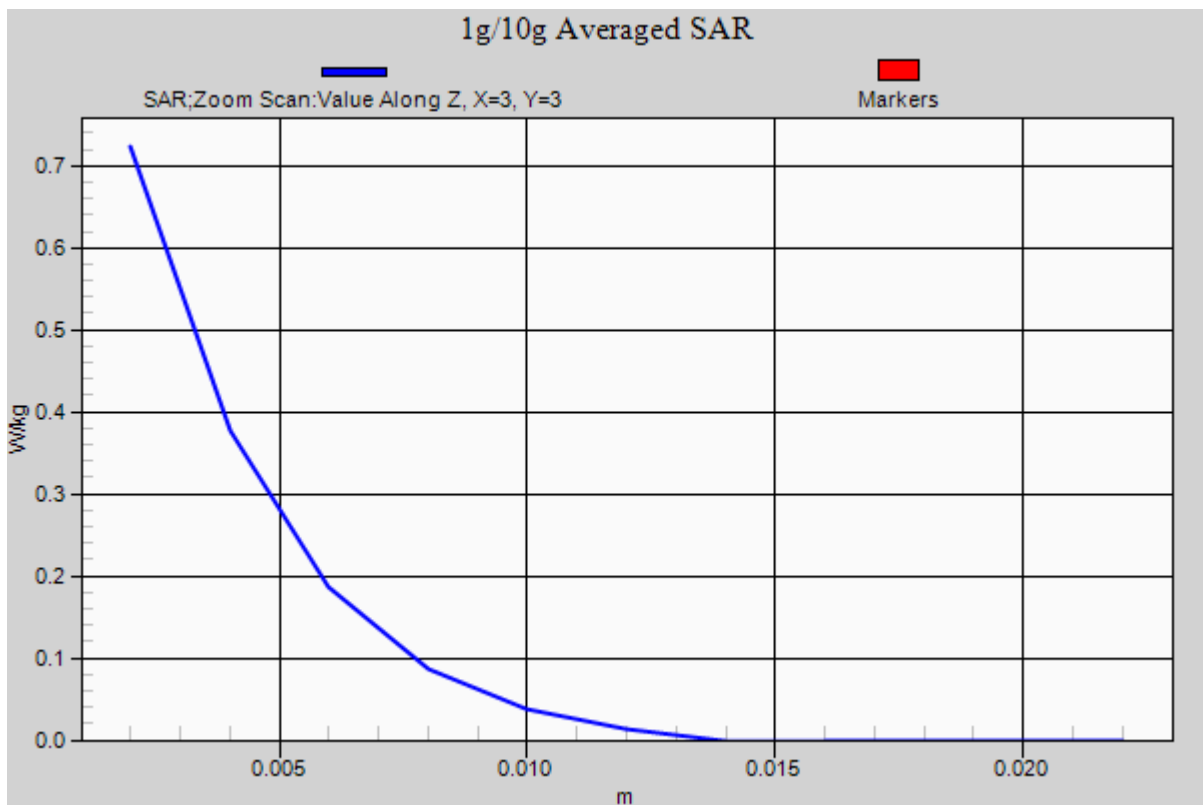
Area Scan (161x161x1): Interpolated grid: dx=10mm, dy=10mm

Zoom Scan (7x7x12)/Cube 0: Measurement grid: dx=4mm, dy=4mm, dz=2mm

Power Drift = 0.00 dB

Peak SAR (extrapolated) = 1.58 W/kg

SAR(1 g) = 0.366 W/kg; SAR(10 g) = 0.121 W/kg



DT&C Co., Ltd.

DUT: 14HJ701D; Type: X-ray Detector

Communication System: W-LAN (0); Frequency: 2462 MHz; Duty Cycle: 1:1
Medium parameters used: $f = 2462$ MHz; $\sigma = 1.898$ S/m; $\epsilon_r = 50.826$; $\rho = 1000$ kg/m³
Phantom section: Flat Section

DASY5 Configuration:

Probe: EX3DV4 - SN3933; ConvF(7.59, 7.59, 7.59); Calibrated: 9/27/2016; Electronics: DAE4 Sn1453
Phantom: ELI v5.0_2013_10_08; Type: QDIVA001BB; Serial: 1223
Measurement SW: DASY52, Version 52.8 (8); SEMCAD X Version 14.6.10 (7331)

Test Date: 2016-11-21; Ambient Temp; 20.3; Tissue Temp: 20.9

Touch from Body, Front, W-LAN(2.4G 802.11b) Ch. 11, Ant Internal, Ant.1

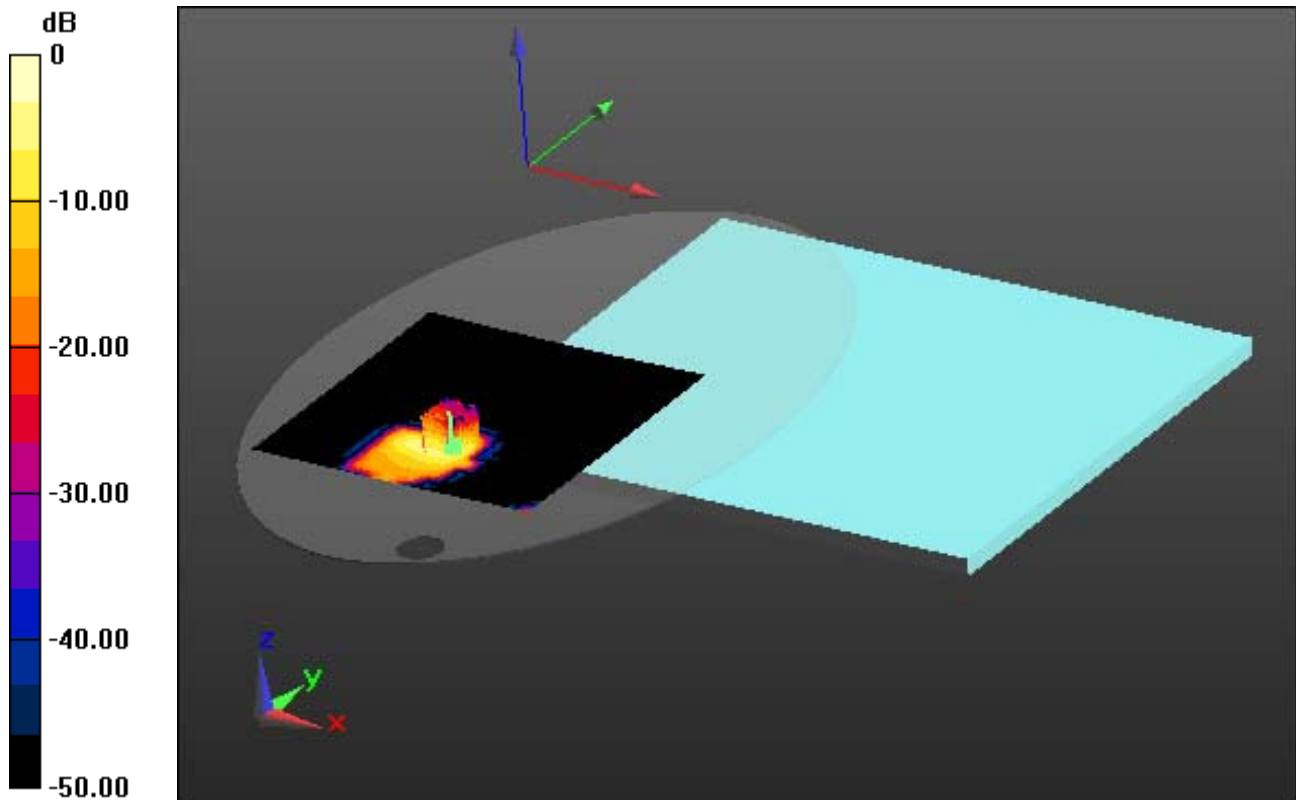
Area Scan (201x201x1): Interpolated grid: dx=12mm, dy=12mm

Zoom Scan (7x7x7)/Cube 0: Measurement grid: dx=5mm, dy=5mm, dz=5mm

Power Drift = -0.16 dB

Peak SAR (extrapolated) = 0.402 W/kg

SAR(1 g) = 0.166 W/kg; SAR(10 g) = 0.070 W/kg



0 dB = 0.278 W/kg

DT&C Co., Ltd.

DUT: 14HJ701D; Type: X-ray Detector

Communication System: W-LAN (0); Frequency: 2462 MHz; Duty Cycle: 1:1
Medium parameters used: $f = 2462$ MHz; $\sigma = 1.898$ S/m; $\epsilon_r = 50.826$; $\rho = 1000$ kg/m³
Phantom section: Flat Section

DASY5 Configuration:

Probe: EX3DV4 - SN3933; ConvF(7.59, 7.59, 7.59); Calibrated: 9/27/2016; Electronics: DAE4 Sn1453
Phantom: ELI v5.0_2013_10_08; Type: QDIVA001BB; Serial: 1223
Measurement SW: DASY52, Version 52.8 (8); SEMCAD X Version 14.6.10 (7331)

Test Date: 2016-11-21; Ambient Temp; 20.3; Tissue Temp: 20.9

Touch from Body, Front, W-LAN(2.4G 802.11b) Ch. 11, Ant Internal, Ant.1

With Enlarge Plot image

Area Scan (201x201x1): Interpolated grid: dx=12mm, dy=12mm

Zoom Scan (7x7x7)/Cube 0: Measurement grid: dx=5mm, dy=5mm, dz=5mm

Power Drift = -0.16 dB

Peak SAR (extrapolated) = 0.402 W/kg

SAR(1 g) = 0.166 W/kg; SAR(10 g) = 0.070 W/kg

The figure is a 2D SAR distribution plot. On the left, a vertical color scale represents dB values, ranging from 0 (yellow) at the top to -50.00 (black) at the bottom, with intermediate markers at -10.00, -20.00, -30.00, and -40.00. The main plot area shows a central, roughly rectangular region of high intensity (yellow and orange) with a grid pattern, indicating the location of the antenna. This region is surrounded by a larger area of lower intensity (red and blue). The background is black, representing -50 dB. A 3D coordinate system with x, y, and z axes is shown at the bottom left of the plot area. A red arrow points downwards and a green arrow points to the right from a point on the right side of the plot.

0 dB = 0.278 W/kg

A5

DT&C Co., Ltd.

DUT: 14HJ701D; Type: X-ray Detector

Communication System: W-LAN (0); Frequency: 2462 MHz; Duty Cycle: 1:1
Medium parameters used: $f = 2462$ MHz; $\sigma = 1.898$ S/m; $\epsilon_r = 50.826$; $\rho = 1000$ kg/m³
Phantom section: Flat Section

DASY5 Configuration:

Probe: EX3DV4 - SN3933; ConvF(7.59, 7.59, 7.59); Calibrated: 9/27/2016; Electronics: DAE4 Sn1453
Phantom: ELI v5.0_2013_10_08; Type: QDIVA001BB; Serial: 1223
Measurement SW: DASY52, Version 52.8 (8); SEMCAD X Version 14.6.10 (7331)

Test Date: 2016-11-21; Ambient Temp; 20.3; Tissue Temp: 20.9

Touch from Body, Front, W-LAN(2.4G 802.11b) Ch. 11, Ant Internal, Ant.1

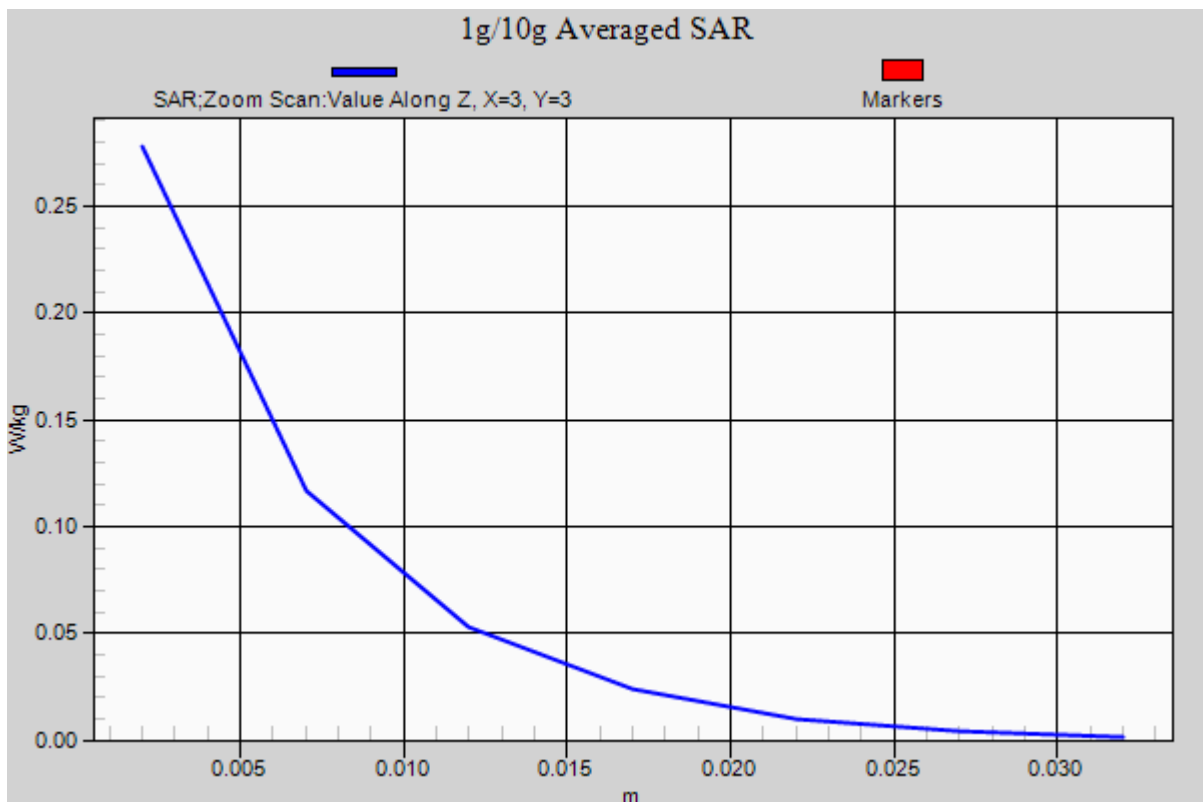
Area Scan (201x201x1): Interpolated grid: dx=12mm, dy=12mm

Zoom Scan (7x7x7)/Cube 0: Measurement grid: dx=5mm, dy=5mm, dz=5mm

Power Drift = -0.16 dB

Peak SAR (extrapolated) = 0.402 W/kg

SAR(1 g) = 0.166 W/kg; SAR(10 g) = 0.070 W/kg



DT&C Co., Ltd.

DUT: 14HJ701D; Type: X-ray Detector

Communication System: W-LAN 5G (0); Frequency: 5270 MHz; Duty Cycle: 1:1
Medium parameters used: $f = 5270$ MHz; $\sigma = 5.423$ S/m; $\epsilon_r = 49.548$; $\rho = 1000$ kg/m³
Phantom section: Flat Section

DASY5 Configuration:

Probe: EX3DV4 - SN3933; ConvF(4.49, 4.49, 4.49); Calibrated: 9/27/2016; Electronics: DAE4 Sn1453
Phantom: ELI v5.0_2013_10_08; Type: QDIVA001BB; Serial: 1223
Measurement SW: DASY52, Version 52.8 (8); SEMCAD X Version 14.6.10 (7331)

Test Date: 2016-11-22; Ambient Temp; 21.2; Tissue Temp: 21.5

Touch from Body, Front, W-LAN(5.3G 802.11ac VHT40) Ch. 54, Ant Internal, MIMO

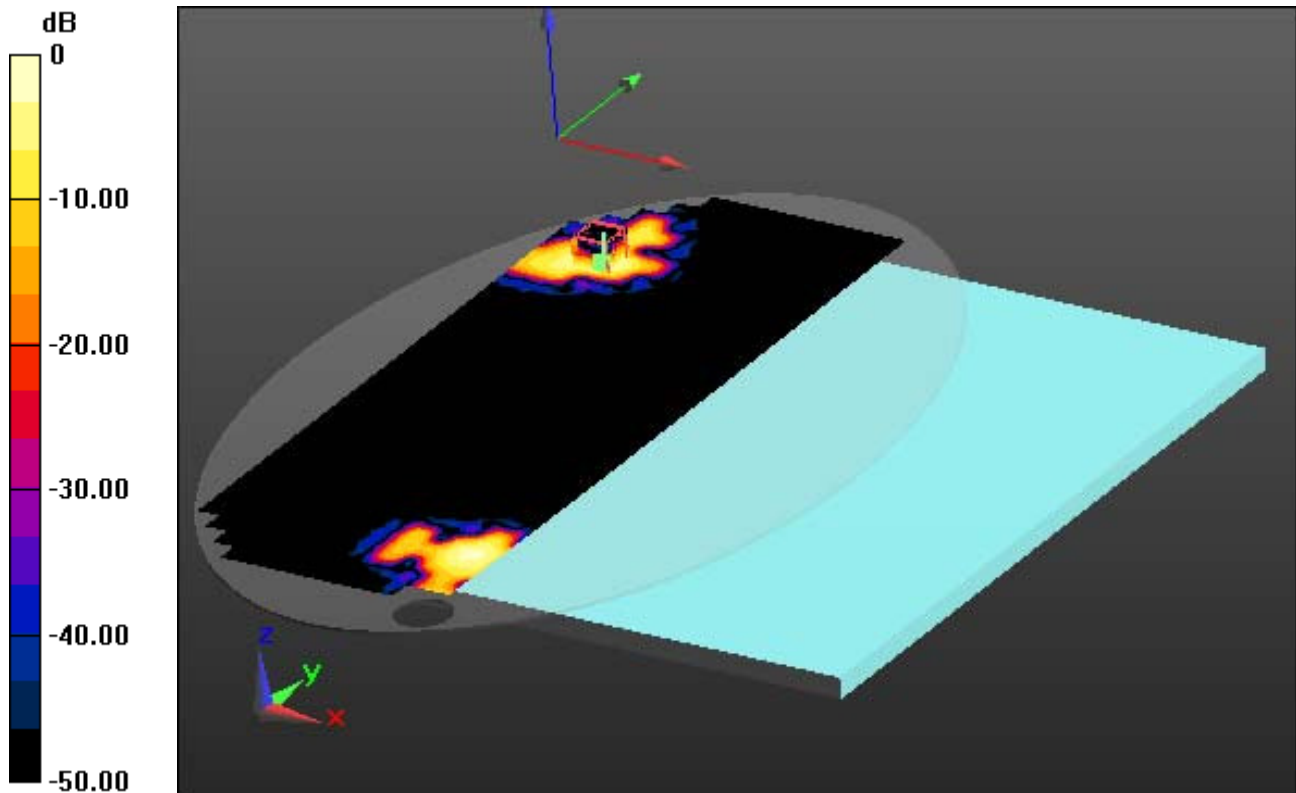
Area Scan (131x341x1): Interpolated grid: dx=10mm, dy=10mm

Zoom Scan (7x7x12)/Cube 0: Measurement grid: dx=4mm, dy=4mm, dz=2mm

Power Drift = -0.18 dB

Peak SAR (extrapolated) = 0.809 W/kg

SAR(1 g) = 0.215 W/kg; SAR(10 g) = 0.074 W/kg



0 dB = 0.415 W/kg

DT&C Co., Ltd.

DUT: 14HJ701D; Type: X-ray Detector

Communication System: W-LAN 5G (0); Frequency: 5270 MHz; Duty Cycle: 1:1
Medium parameters used: $f = 5270$ MHz; $\sigma = 5.423$ S/m; $\epsilon_r = 49.548$; $\rho = 1000$ kg/m³
Phantom section: Flat Section

DASY5 Configuration:

Probe: EX3DV4 - SN3933; ConvF(4.49, 4.49, 4.49); Calibrated: 9/27/2016; Electronics: DAE4 Sn1453
Phantom: ELI v5.0_2013_10_08; Type: QDIVA001BB; Serial: 1223
Measurement SW: DASY52, Version 52.8 (8); SEMCAD X Version 14.6.10 (7331)

Test Date: 2016-11-22; Ambient Temp; 21.2; Tissue Temp: 21.5

Touch from Body, Front, W-LAN(5.3G 802.11ac VHT40) Ch. 54, Ant Internal, MIMO

With Enlarge Plot image

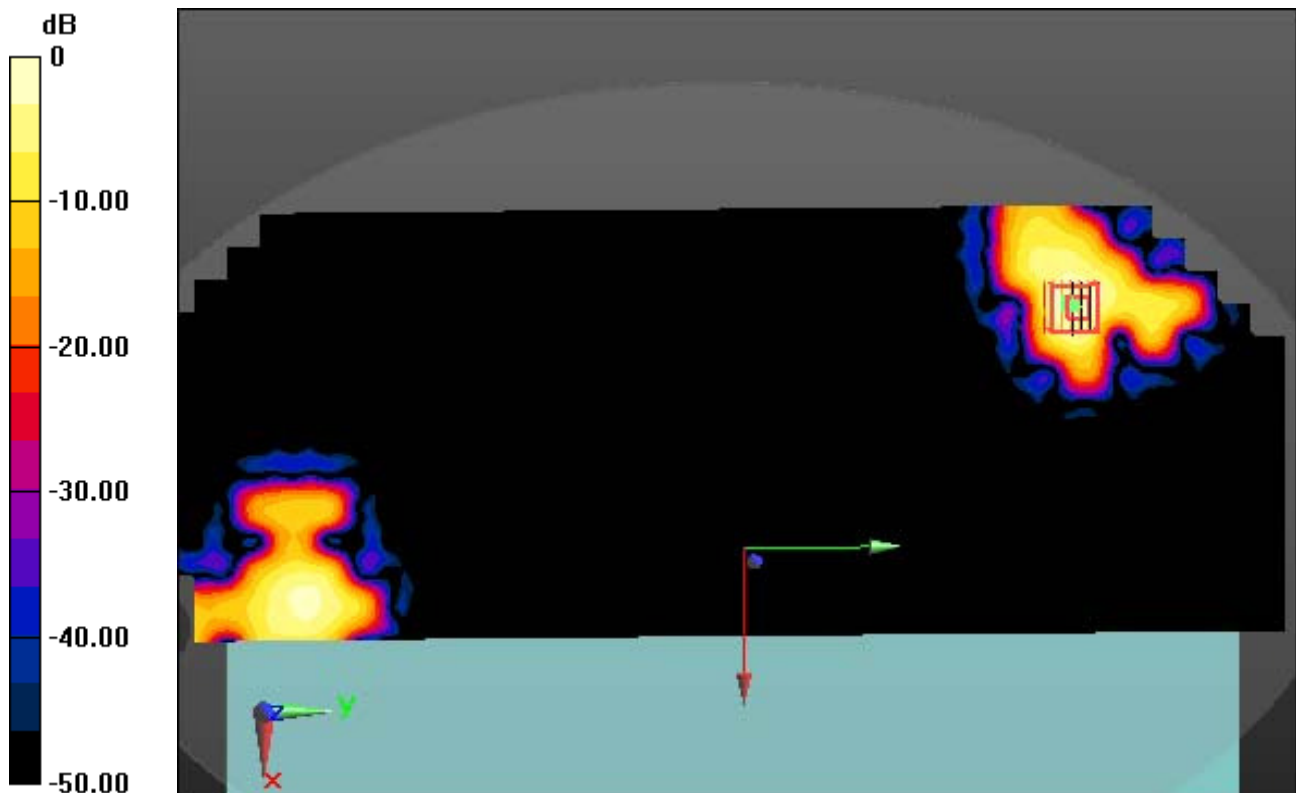
Area Scan (131x341x1): Interpolated grid: dx=10mm, dy=10mm

Zoom Scan (7x7x12)/Cube 0: Measurement grid: dx=4mm, dy=4mm, dz=2mm

Power Drift = -0.18 dB

Peak SAR (extrapolated) = 0.809 W/kg

SAR(1 g) = 0.215 W/kg; SAR(10 g) = 0.074 W/kg



0 dB = 0.415 W/kg

DT&C Co., Ltd.

DUT: 14HJ701D; Type: X-ray Detector

Communication System: W-LAN 5G (0); Frequency: 5270 MHz; Duty Cycle: 1:1
Medium parameters used: $f = 5270$ MHz; $\sigma = 5.423$ S/m; $\epsilon_r = 49.548$; $\rho = 1000$ kg/m³
Phantom section: Flat Section

DASY5 Configuration:

Probe: EX3DV4 - SN3933; ConvF(4.49, 4.49, 4.49); Calibrated: 9/27/2016; Electronics: DAE4 Sn1453
Phantom: ELI v5.0_2013_10_08; Type: QDIVA001BB; Serial: 1223
Measurement SW: DASY52, Version 52.8 (8); SEMCAD X Version 14.6.10 (7331)

Test Date: 2016-11-22; Ambient Temp; 21.2; Tissue Temp: 21.5

Touch from Body, Front, W-LAN(5.3G 802.11ac VHT40) Ch. 54, Ant Internal, MIMO

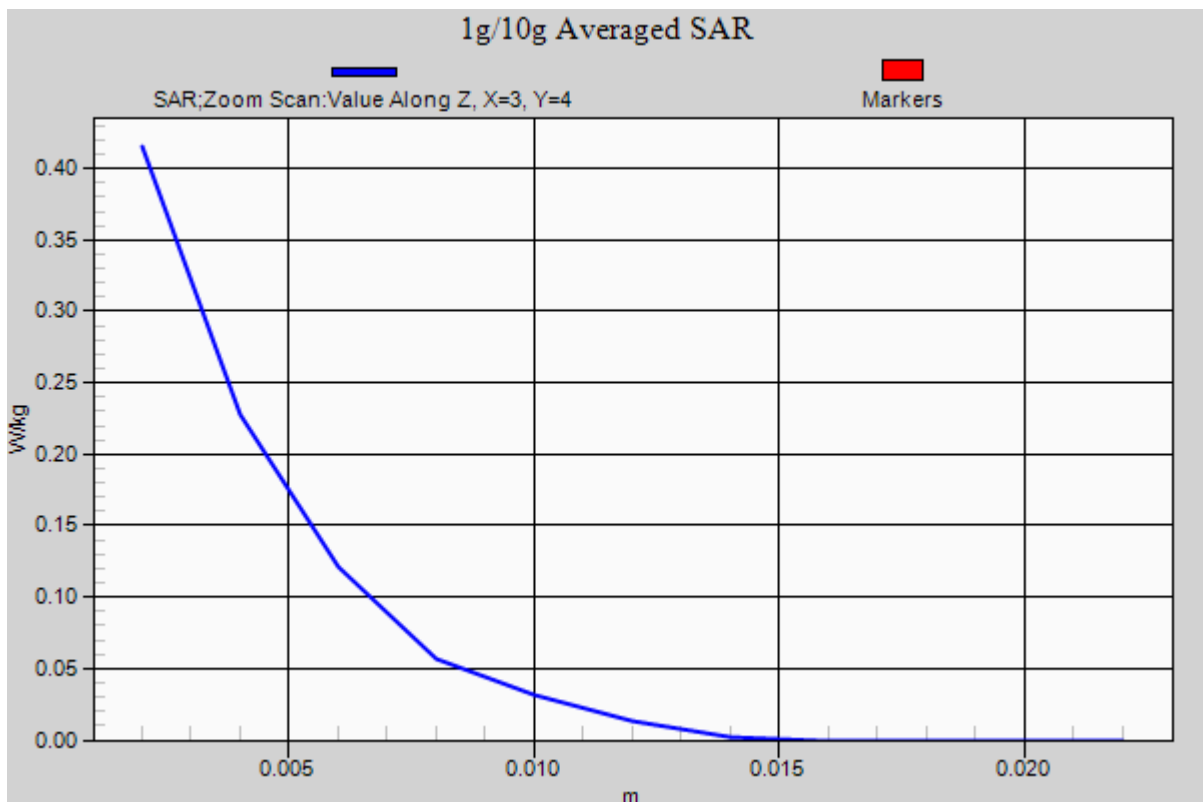
Area Scan (131x341x1): Interpolated grid: dx=10mm, dy=10mm

Zoom Scan (7x7x12)/Cube 0: Measurement grid: dx=4mm, dy=4mm, dz=2mm

Power Drift = -0.18 dB

Peak SAR (extrapolated) = 0.809 W/kg

SAR(1 g) = 0.215 W/kg; SAR(10 g) = 0.074 W/kg



DT&C Co., Ltd.

DUT: 14HJ701D; Type: X-ray Detector

Communication System: W-LAN 5G (0); Frequency: 5690 MHz; Duty Cycle: 1:1
Medium parameters used: $f = 5690$ MHz; $\sigma = 5.885$ S/m; $\epsilon_r = 48.096$; $\rho = 1000$ kg/m³
Phantom section: Flat Section

DASY5 Configuration:

Probe: EX3DV4 - SN3933; ConvF(3.8, 3.8, 3.8); Calibrated: 9/27/2016; Electronics: DAE4 Sn1453
Phantom: ELI v5.0_2013_10_08; Type: QDIVA001BB; Serial: 1223
Measurement SW: DASY52, Version 52.8 (8); SEMCAD X Version 14.6.10 (7331)

Test Date: 2016-11-23; Ambient Temp; 20.6; Tissue Temp: 21.3

Touch from Body, Front, W-LAN(5.6G 802.11ac VHT80) Ch. 138, Ant Internal, Ant.1

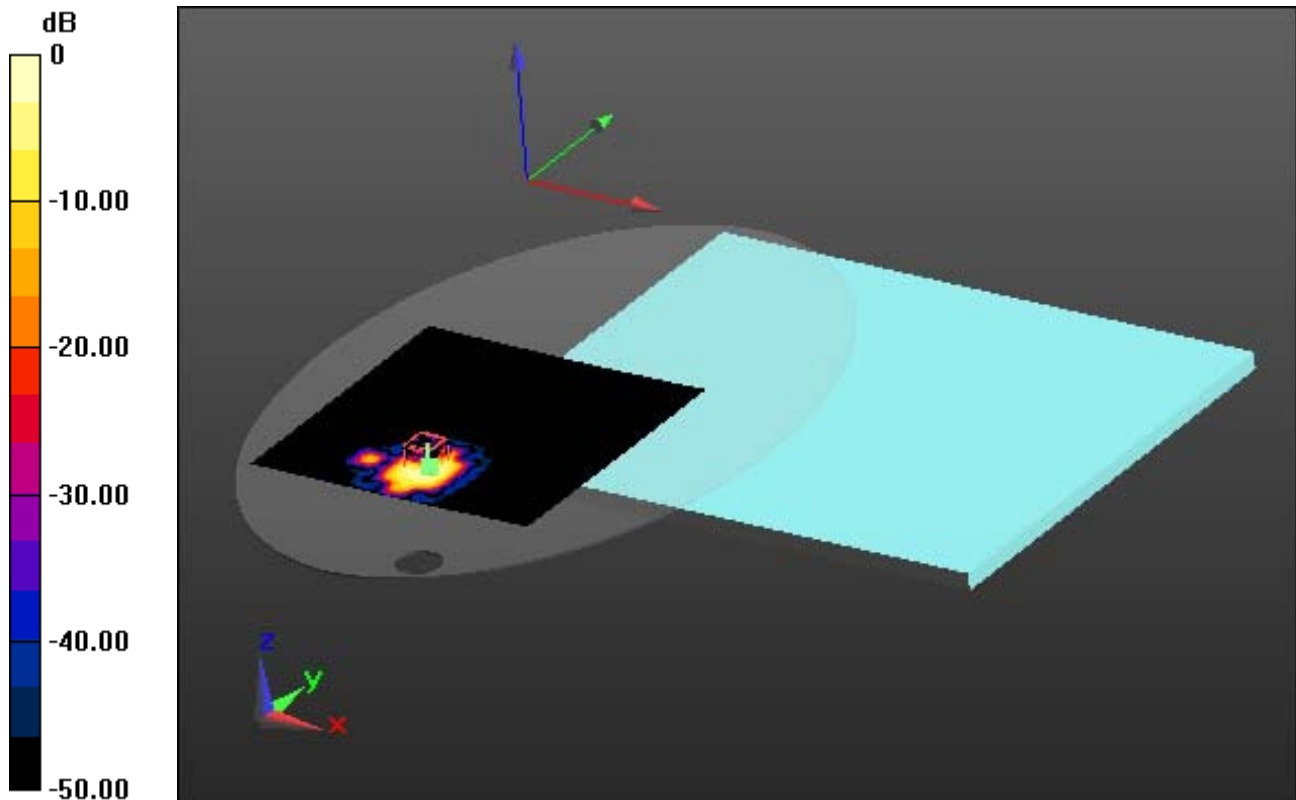
Area Scan (161x161x1): Interpolated grid: dx=10mm, dy=10mm

Zoom Scan (7x7x12)/Cube 0: Measurement grid: dx=4mm, dy=4mm, dz=2mm

Power Drift = 0.10 dB

Peak SAR (extrapolated) = 0.888 W/kg

SAR(1 g) = 0.235 W/kg; SAR(10 g) = 0.078 W/kg



0 dB = 0.459 W/kg

DT&C Co., Ltd.

DUT: 14HJ701D; Type: X-ray Detector

Communication System: W-LAN 5G (0); Frequency: 5690 MHz; Duty Cycle: 1:1
Medium parameters used: $f = 5690$ MHz; $\sigma = 5.885$ S/m; $\epsilon_r = 48.096$; $\rho = 1000$ kg/m³
Phantom section: Flat Section

DASY5 Configuration:

Probe: EX3DV4 - SN3933; ConvF(3.8, 3.8, 3.8); Calibrated: 9/27/2016; Electronics: DAE4 Sn1453
Phantom: ELI v5.0_2013_10_08; Type: QDIVA001BB; Serial: 1223
Measurement SW: DASY52, Version 52.8 (8); SEMCAD X Version 14.6.10 (7331)

Test Date: 2016-11-23; Ambient Temp; 20.6; Tissue Temp: 21.3

Touch from Body, Front, W-LAN(5.6G 802.11ac VHT80) Ch. 138, Ant Internal, Ant.1

With Enlarge Plot image

Area Scan (161x161x1): Interpolated grid: dx=10mm, dy=10mm

Zoom Scan (7x7x12)/Cube 0: Measurement grid: dx=4mm, dy=4mm, dz=2mm

Power Drift = 0.10 dB

Peak SAR (extrapolated) = 0.888 W/kg

SAR(1 g) = 0.235 W/kg; SAR(10 g) = 0.078 W/kg

The figure is a 2D SAR distribution plot. On the left, a vertical color scale indicates dB values from 0 (yellow) to -50.00 (black). The plot area shows a central high-intensity region (yellow/red) with a grid overlay, surrounded by lower intensity regions (blue/purple). A coordinate system (x, y, z) is shown at the bottom left. A red arrow points downwards and a green arrow points to the right from a point on the right side of the plot.

0 dB = 0.459 W/kg

A7

DT&C Co., Ltd.

DUT: 14HJ701D; Type: X-ray Detector

Communication System: W-LAN 5G (0); Frequency: 5690 MHz; Duty Cycle: 1:1
Medium parameters used: $f = 5690$ MHz; $\sigma = 5.885$ S/m; $\epsilon_r = 48.096$; $\rho = 1000$ kg/m³
Phantom section: Flat Section

DASY5 Configuration:

Probe: EX3DV4 - SN3933; ConvF(3.8, 3.8, 3.8); Calibrated: 9/27/2016; Electronics: DAE4 Sn1453
Phantom: ELI v5.0_2013_10_08; Type: QDIVA001BB; Serial: 1223
Measurement SW: DASY52, Version 52.8 (8); SEMCAD X Version 14.6.10 (7331)

Test Date: 2016-11-23; Ambient Temp; 20.6; Tissue Temp: 21.3

Touch from Body, Front, W-LAN(5.6G 802.11ac VHT80) Ch. 138, Ant Internal, Ant.1

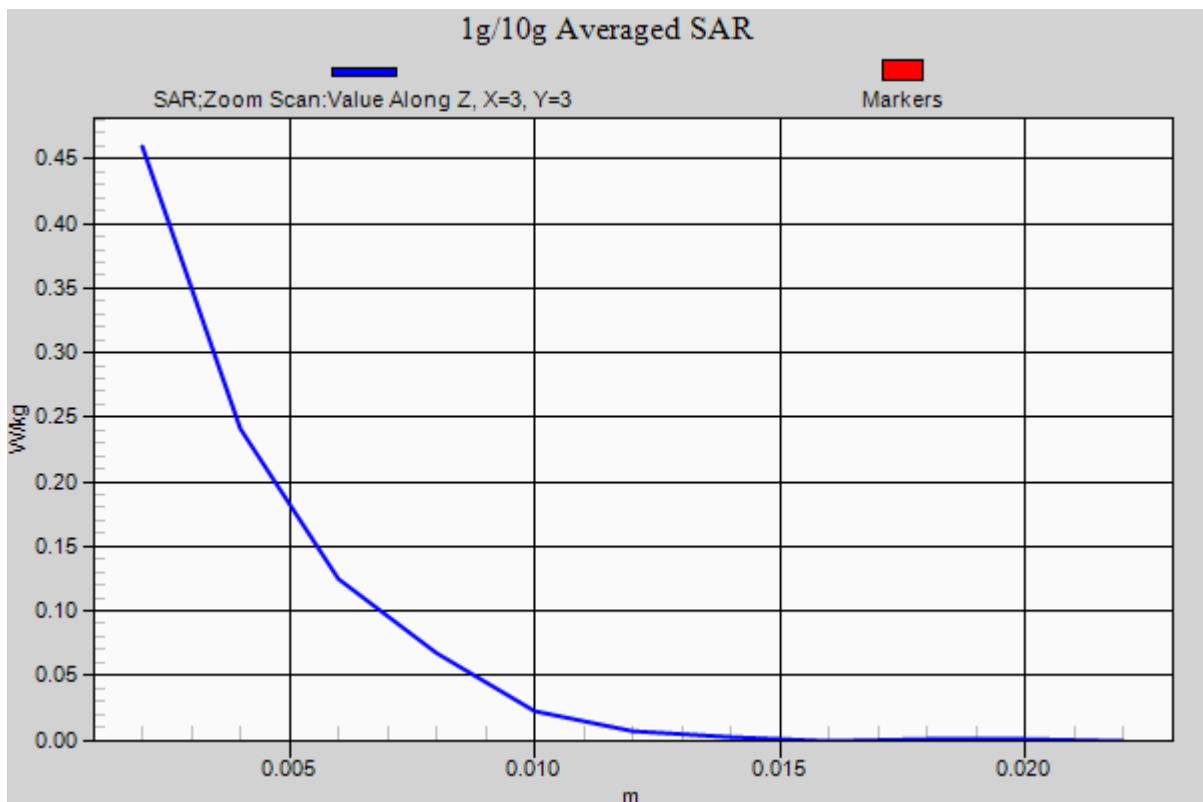
Area Scan (161x161x1): Interpolated grid: dx=10mm, dy=10mm

Zoom Scan (7x7x12)/Cube 0: Measurement grid: dx=4mm, dy=4mm, dz=2mm

Power Drift = 0.10 dB

Peak SAR (extrapolated) = 0.888 W/kg

SAR(1 g) = 0.235 W/kg; SAR(10 g) = 0.078 W/kg



DT&C Co., Ltd.

DUT: 14HJ701D; Type: X-ray Detector

Communication System: W-LAN 5G (0); Frequency: 5785 MHz; Duty Cycle: 1:1
Medium parameters used: $f = 5785$ MHz; $\sigma = 6.049$ S/m; $\epsilon_r = 48.293$; $\rho = 1000$ kg/m³
Phantom section: Flat Section

DASY5 Configuration:

Probe: EX3DV4 - SN3933; ConvF(3.95, 3.95, 3.95); Calibrated: 9/27/2016; Electronics: DAE4 Sn1453
Phantom: ELI v5.0_2013_10_08; Type: QDIVA001BB; Serial: 1223
Measurement SW: DASY52, Version 52.8 (8); SEMCAD X Version 14.6.10 (7331)

Test Date: 2016-11-24; Ambient Temp; 21.5; Tissue Temp: 21.8

Touch from Body, Front, W-LAN(5.8G 802.11a) Ch. 157, Ant Internal, Ant.1

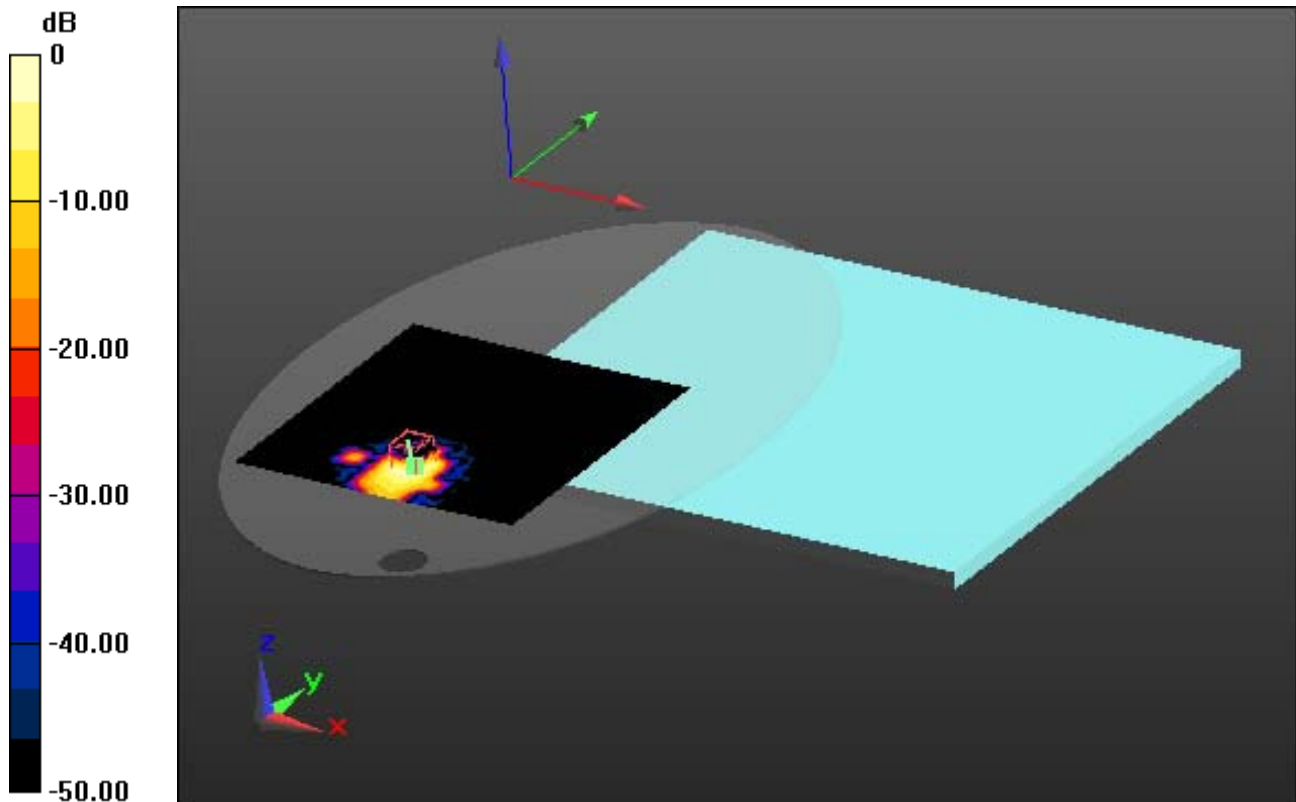
Area Scan (161x161x1): Interpolated grid: dx=10mm, dy=10mm

Zoom Scan (7x7x12)/Cube 0: Measurement grid: dx=4mm, dy=4mm, dz=2mm

Power Drift = 0.02 dB

Peak SAR (extrapolated) = 1.20 W/kg

SAR(1 g) = 0.282 W/kg; SAR(10 g) = 0.092 W/kg



0 dB = 0.572 W/kg

DT&C Co., Ltd.

DUT: 14HJ701D; Type: X-ray Detector

Communication System: W-LAN 5G (0); Frequency: 5785 MHz; Duty Cycle: 1:1
Medium parameters used: $f = 5785$ MHz; $\sigma = 6.049$ S/m; $\epsilon_r = 48.293$; $\rho = 1000$ kg/m³
Phantom section: Flat Section

DASY5 Configuration:

Probe: EX3DV4 - SN3933; ConvF(3.95, 3.95, 3.95); Calibrated: 9/27/2016; Electronics: DAE4 Sn1453
Phantom: ELI v5.0_2013_10_08; Type: QDIVA001BB; Serial: 1223
Measurement SW: DASY52, Version 52.8 (8); SEMCAD X Version 14.6.10 (7331)

Test Date: 2016-11-24; Ambient Temp; 21.5; Tissue Temp: 21.8

Touch from Body, Front, W-LAN(5.8G 802.11a) Ch. 157, Ant Internal, Ant.1

With Enlarge Plot image

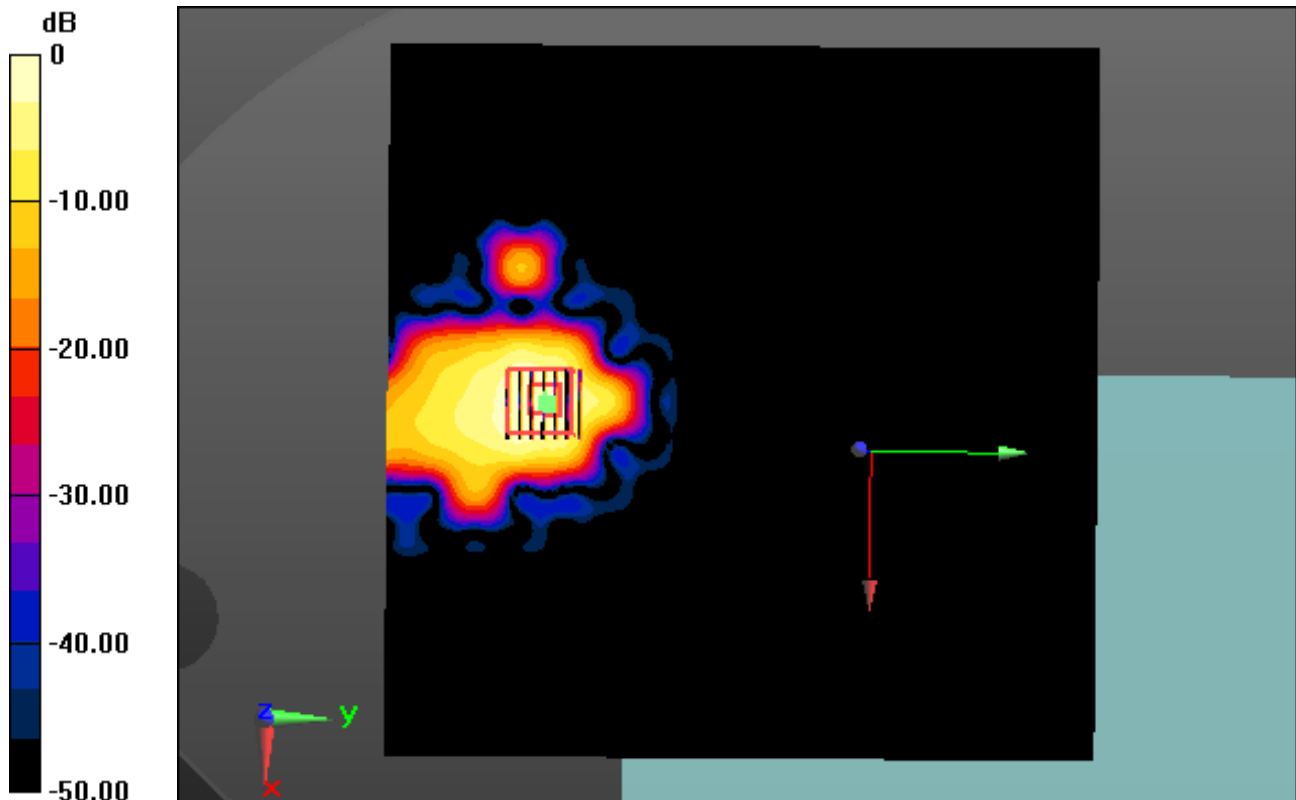
Area Scan (161x161x1): Interpolated grid: dx=10mm, dy=10mm

Zoom Scan (7x7x12)/Cube 0: Measurement grid: dx=4mm, dy=4mm, dz=2mm

Power Drift = 0.02 dB

Peak SAR (extrapolated) = 1.20 W/kg

SAR(1 g) = 0.282 W/kg; SAR(10 g) = 0.092 W/kg



0 dB = 0.572 W/kg

DT&C Co., Ltd.

DUT: 14HJ701D; Type: X-ray Detector

Communication System: W-LAN 5G (0); Frequency: 5785 MHz; Duty Cycle: 1:1
Medium parameters used: $f = 5785$ MHz; $\sigma = 6.049$ S/m; $\epsilon_r = 48.293$; $\rho = 1000$ kg/m³
Phantom section: Flat Section

DASY5 Configuration:

Probe: EX3DV4 - SN3933; ConvF(3.95, 3.95, 3.95); Calibrated: 9/27/2016; Electronics: DAE4 Sn1453
Phantom: ELI v5.0_2013_10_08; Type: QDIVA001BB; Serial: 1223
Measurement SW: DASY52, Version 52.8 (8); SEMCAD X Version 14.6.10 (7331)

Test Date: 2016-11-24; Ambient Temp; 21.5; Tissue Temp: 21.8

Touch from Body, Front, W-LAN(5.8G 802.11a) Ch. 157, Ant Internal, Ant.1

Area Scan (161x161x1): Interpolated grid: dx=10mm, dy=10mm

Zoom Scan (7x7x12)/Cube 0: Measurement grid: dx=4mm, dy=4mm, dz=2mm

Power Drift = 0.02 dB

Peak SAR (extrapolated) = 1.20 W/kg

SAR(1 g) = 0.282 W/kg; SAR(10 g) = 0.092 W/kg

