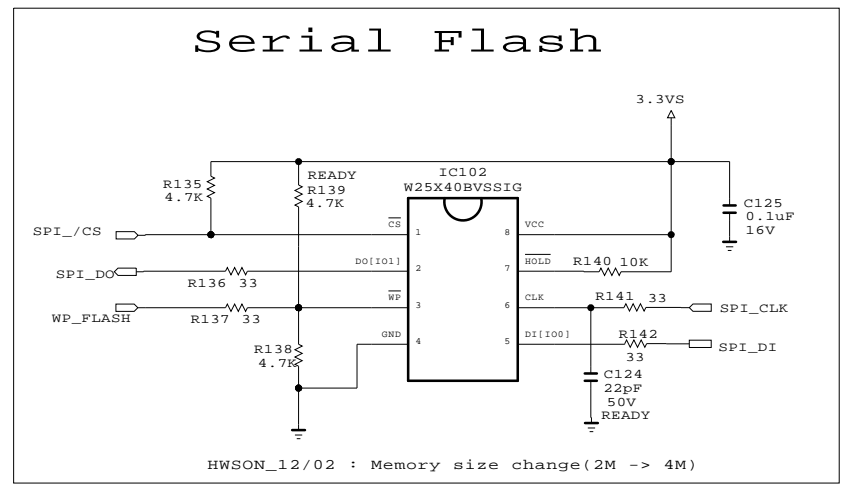
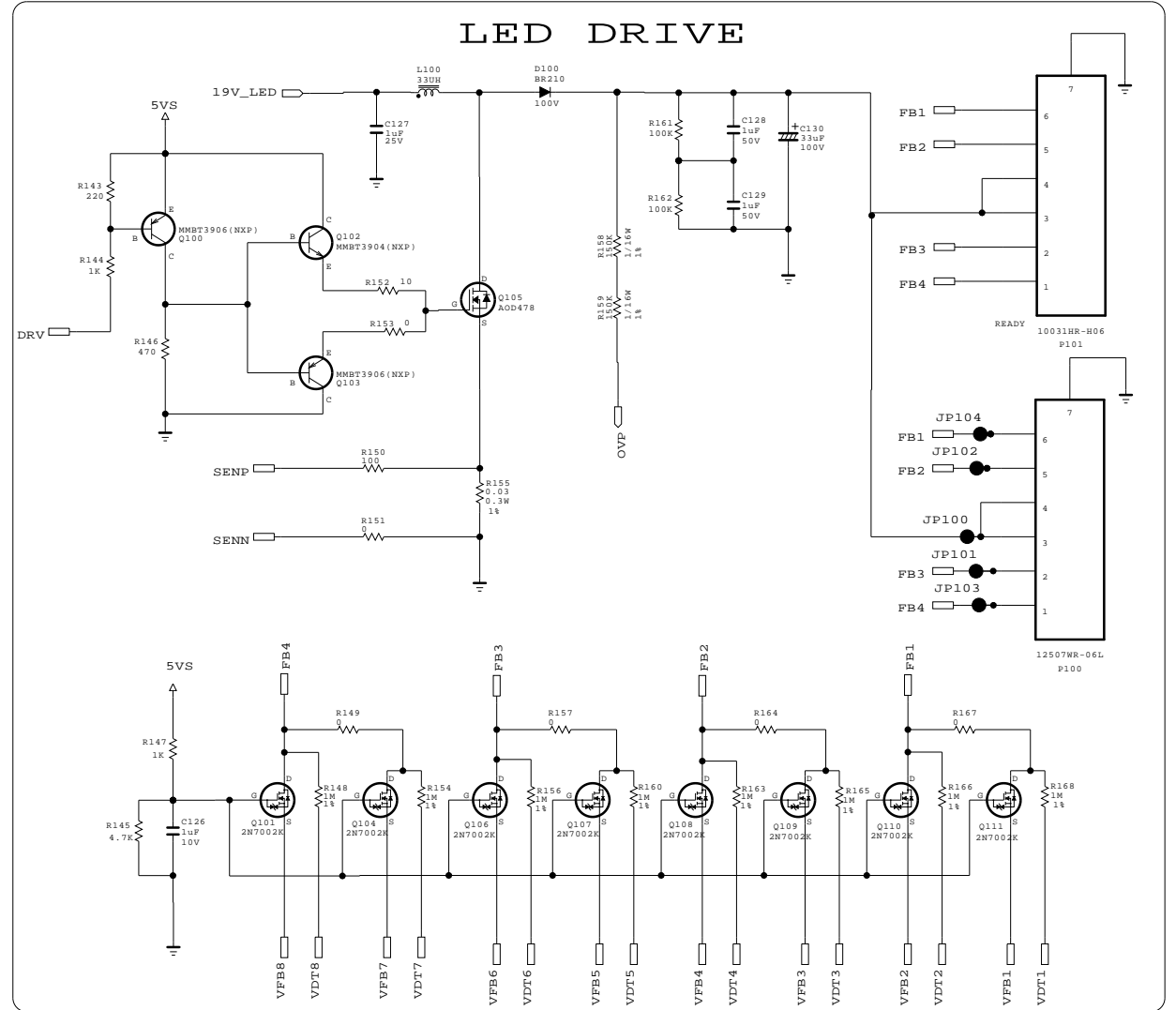
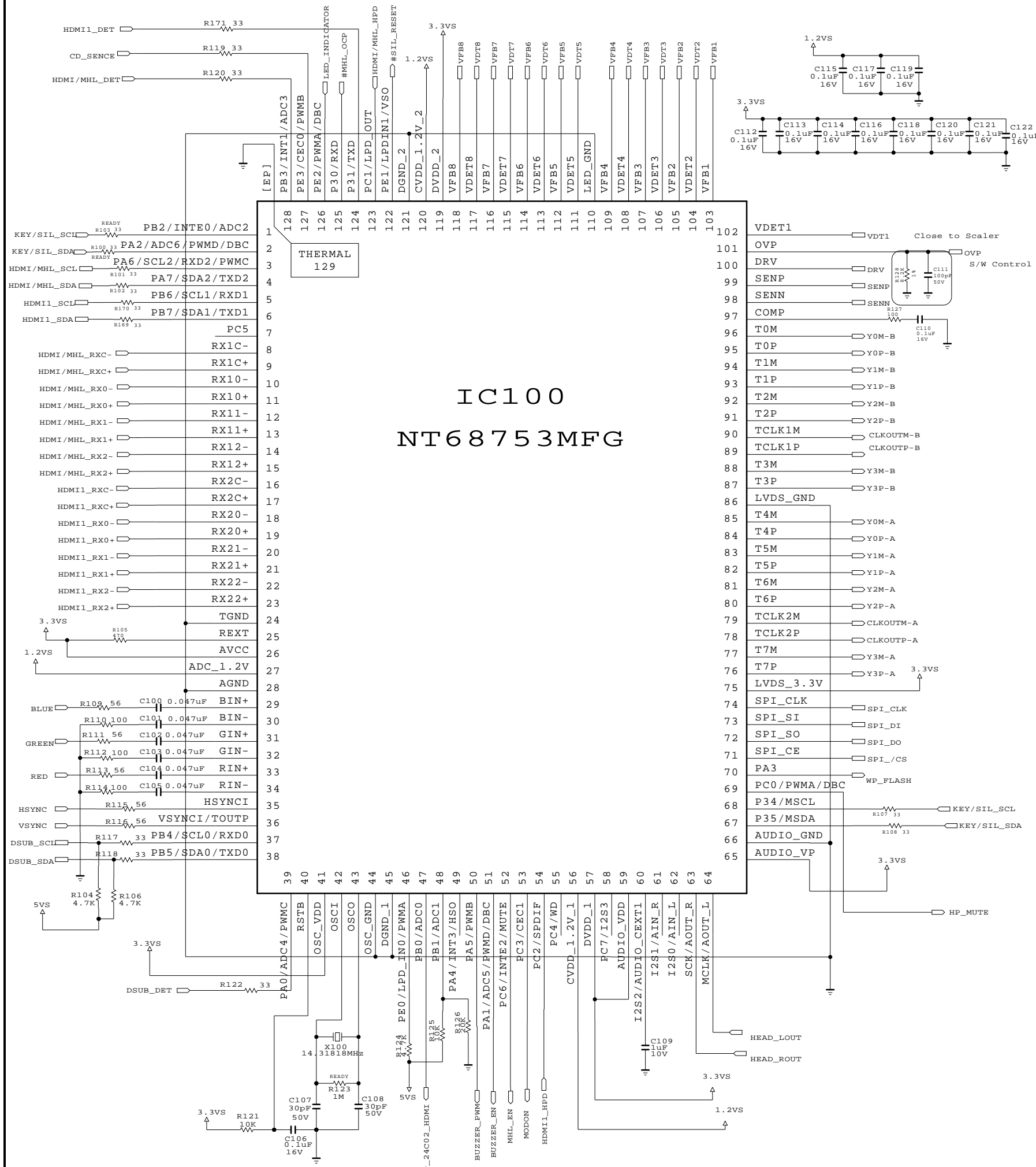


PCB P/N: EAX64697201
Date : 2012.04.09



THE Δ SYMBOL MARK OF THIS SCHEMATIC DIAGRAM INCORPORATES SPECIAL FEATURES IMPORTANT FOR PROTECTION FROM X-RADIATION. FILRE AND ELECTRICAL SHOCK HAZARDS, WHEN SERVICING IF IS ESSENTIAL THAT ONLY MANUFACTURES SPECIFIED PARTS BE USED FOR THE CRITICAL COMPONENTS IN THE Δ SYMBOL MARK OF THE SCHEMATIC.

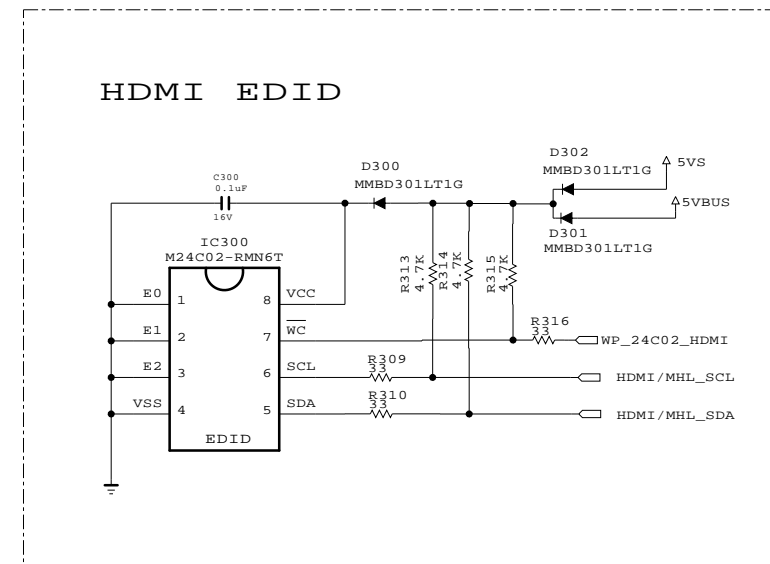
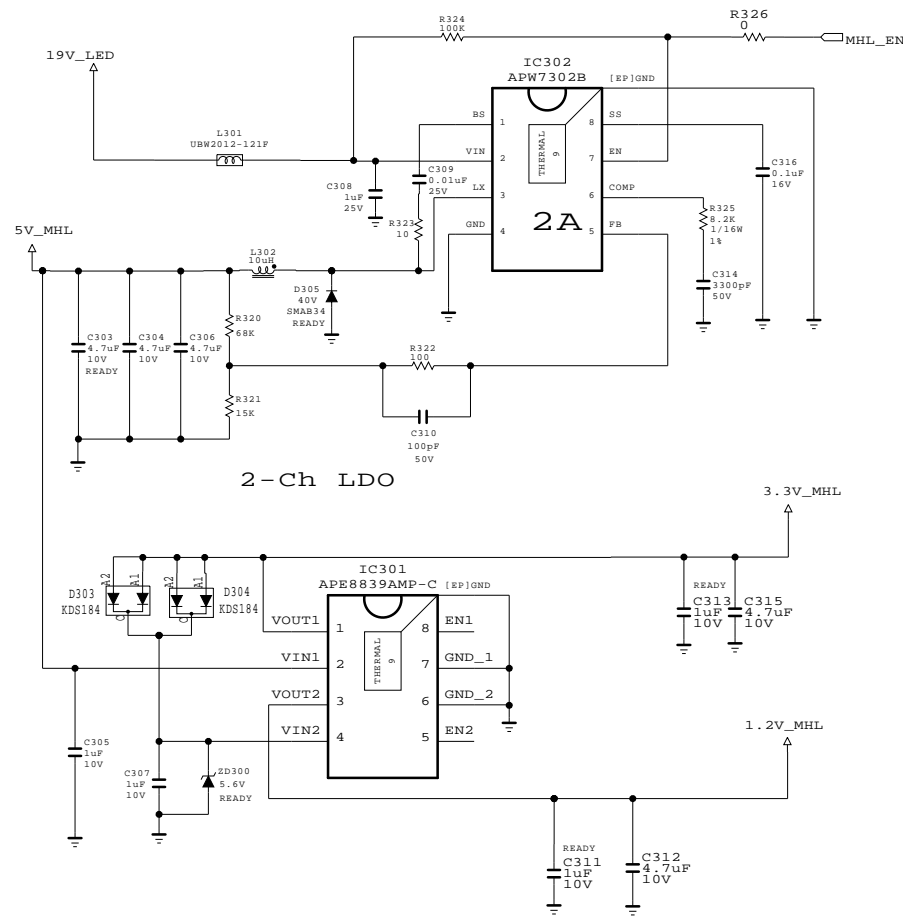
SECRET
LGElectronics



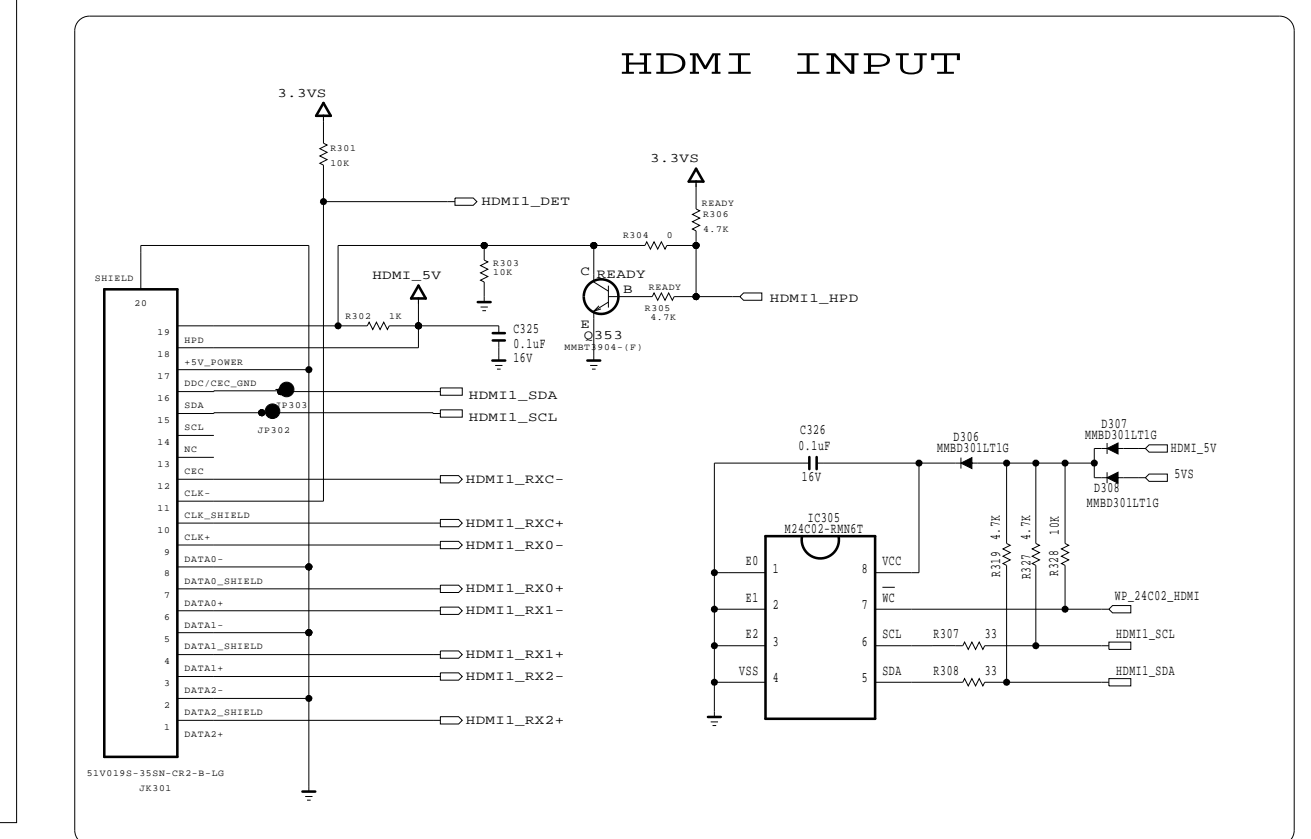
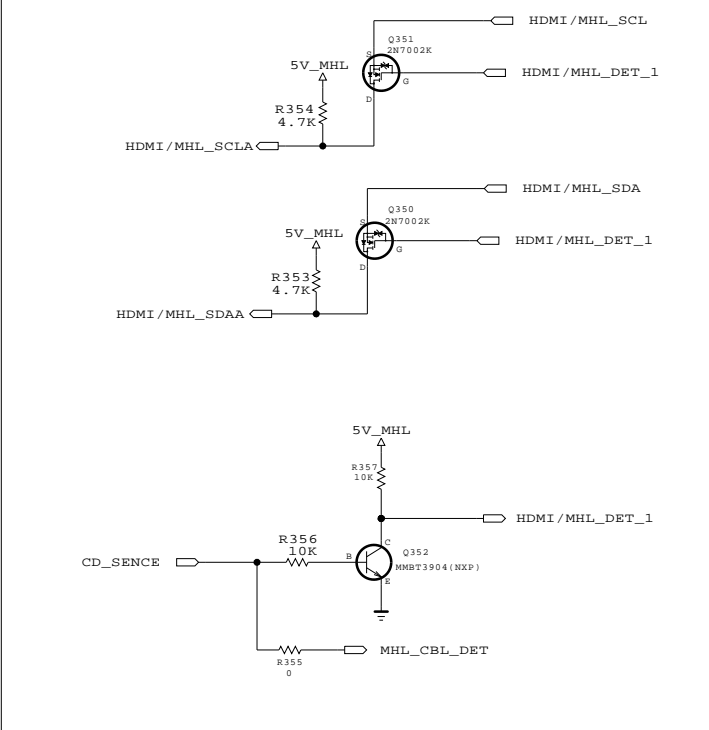
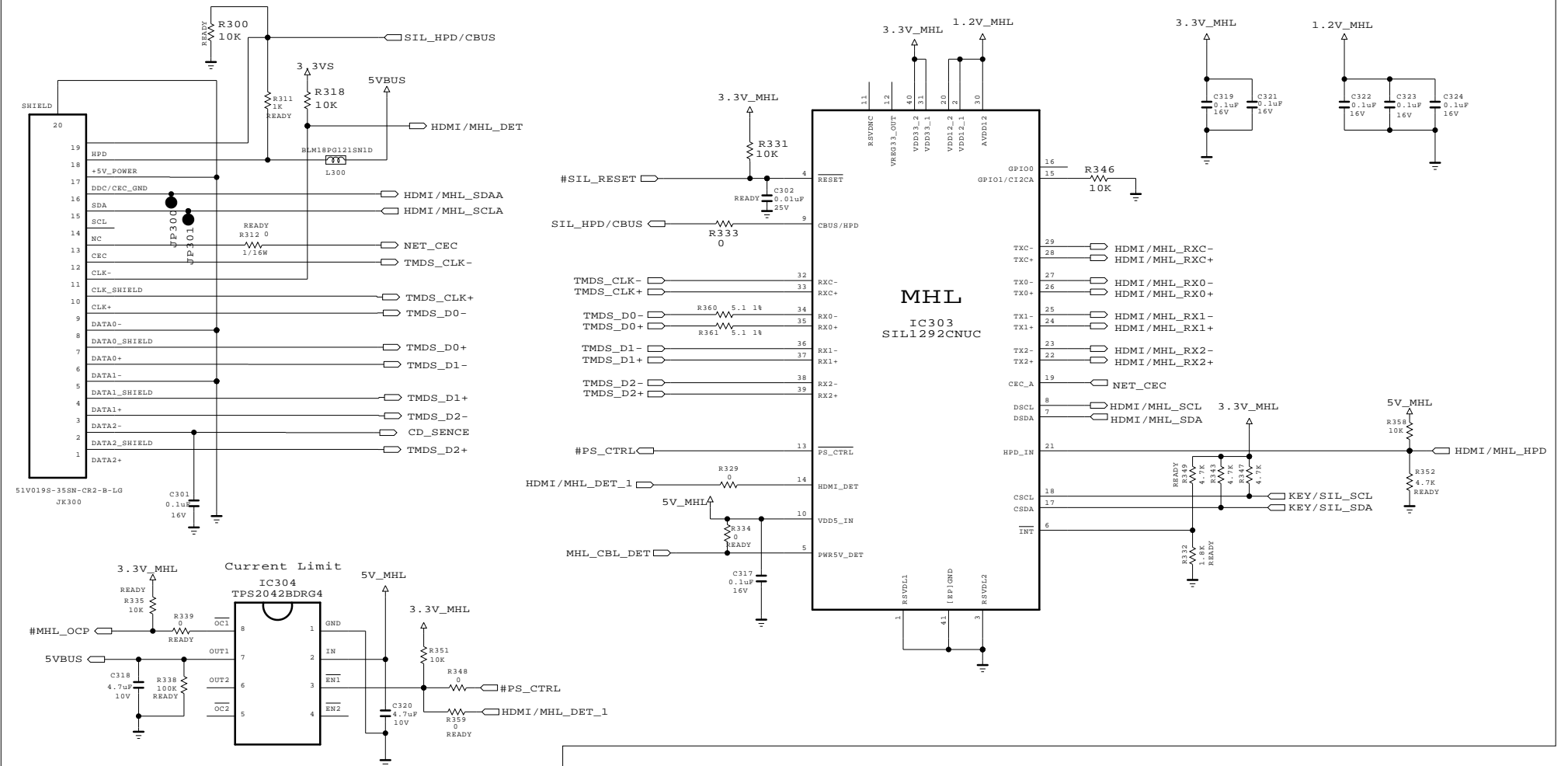
MODEL	IPS7L	DATE	2012.04.09
BLOCK	Scaler	SHEET	1 / 3

MHL Load(Max)

1. 5VBUS : 0.9A(Forcharging)
2. 5VM : 6mA(at HDMI)
3. 3.3VM : 58mA(at HDMI)
4. 1.2VM : 185mA(at HDMI)



MHL Block



THE Δ SYMBOL MARK OF THIS SCHEMATIC DIAGRAM INCORPORATES SPECIAL FEATURES IMPORTANT FOR PROTECTION FROM X-RADIATION. FILRE AND ELECTRICAL SHOCK HAZARDS, WHEN SERVICING IF IS ESSENTIAL THAT ONLY MANUFACTURES SPECIFIED PARTS BE USED FOR THE CRITICAL COMPONENTS IN THE Δ SYMBOL MARK OF THE SCHEMATIC.

SECRET
LGElectronics



MODEL	IPS7L	DATE	2012.04.09
BLOCK	HDMI/MHL	SHEET	3 / 3