

SAR Test Setup Photographs

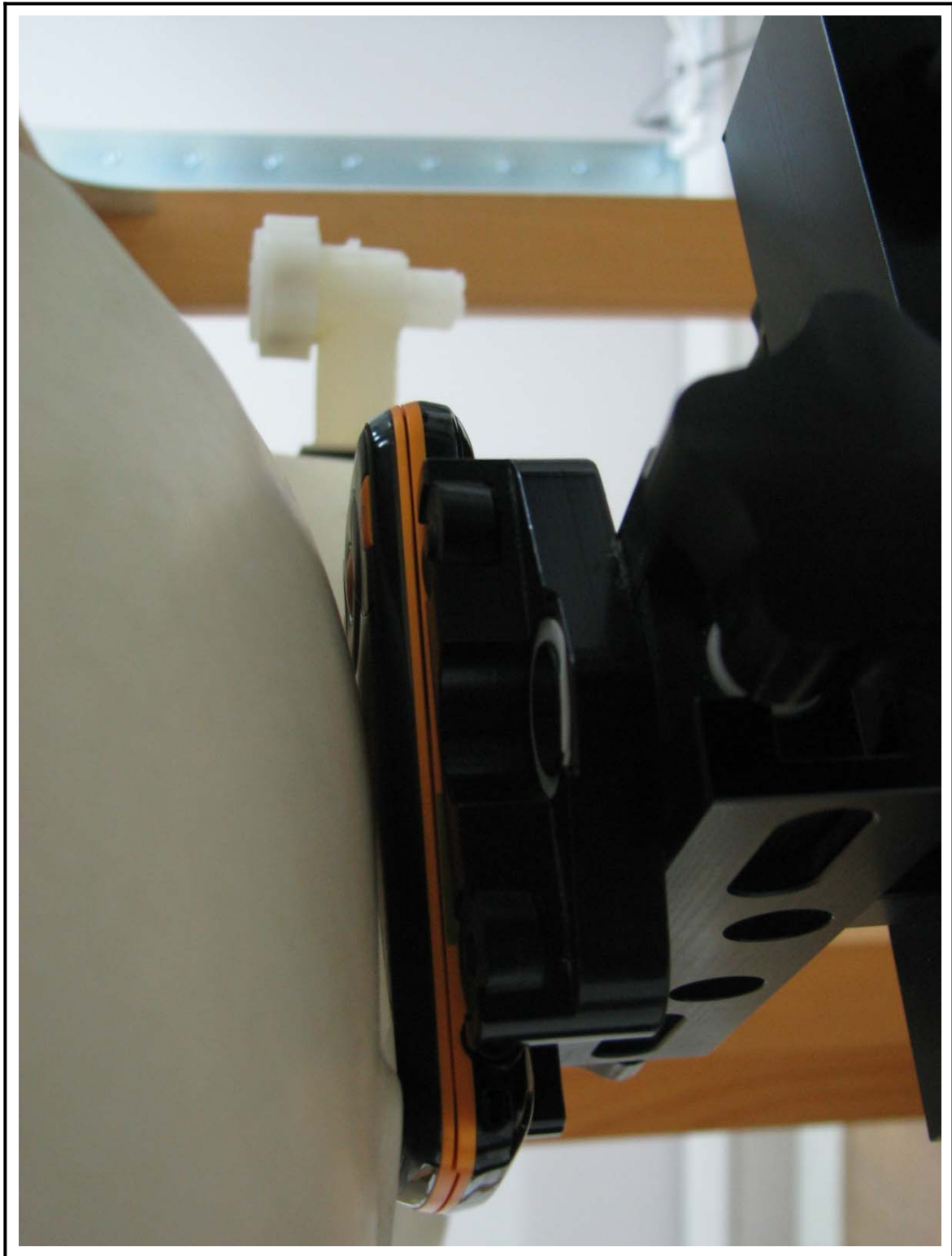


Figure 1 Right Head SAR Test Setup - Cheek Touch Position

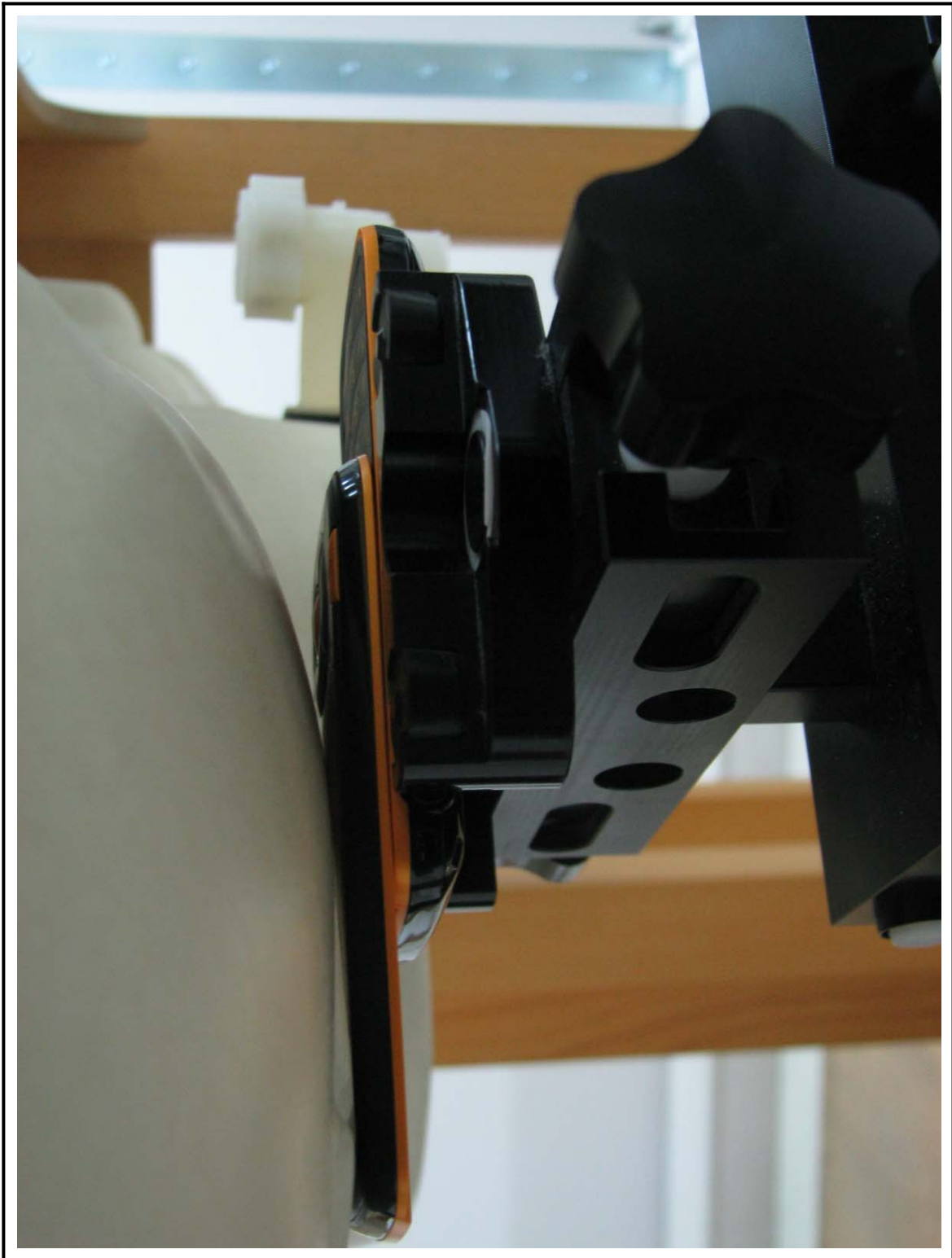


Figure 2 Right Head SAR Test Setup – Cheek Touch Position

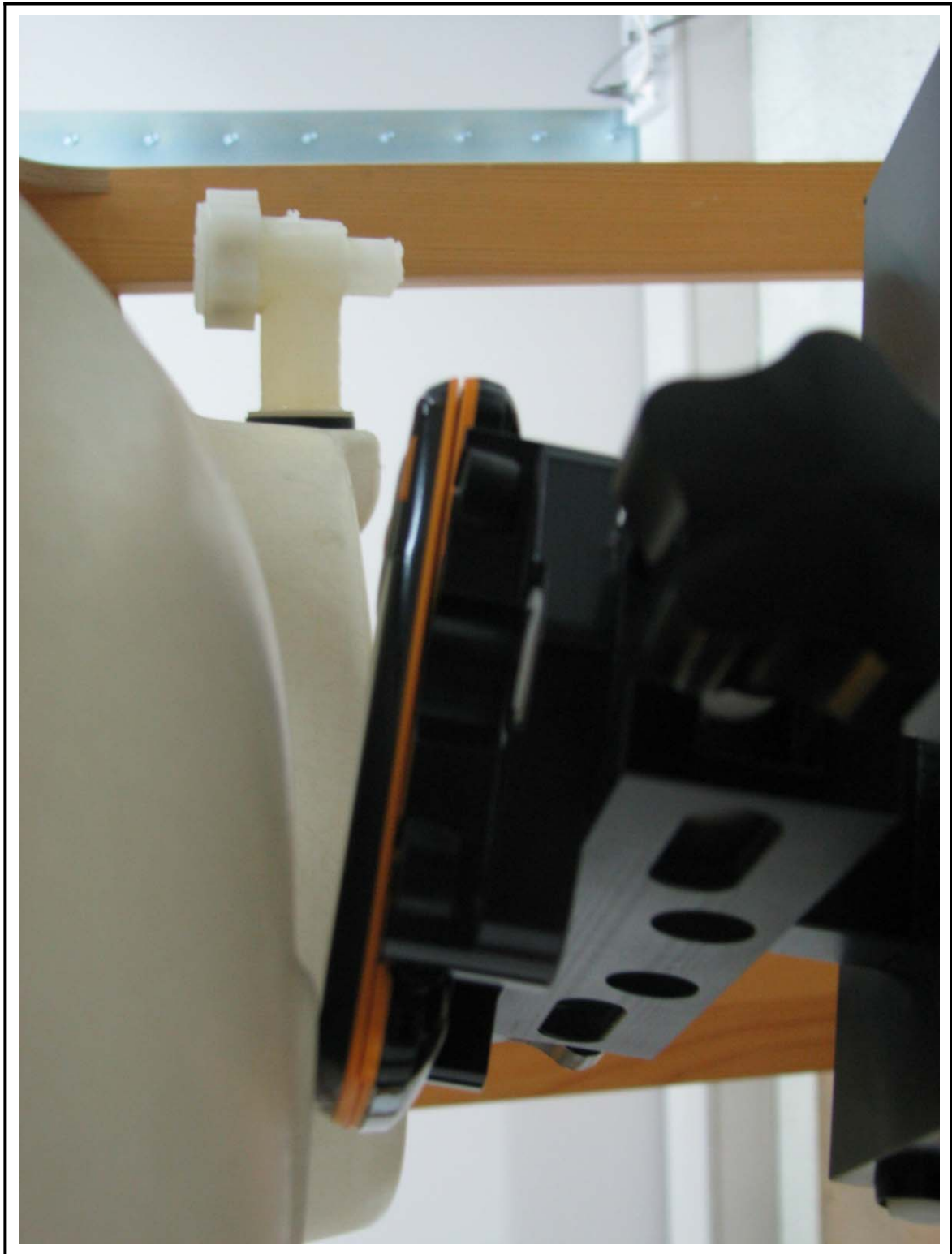


Figure 3 Right Head SAR Test Setup - Ear Tilt Position



Figure 4 Right Head SAR Test Setup - Ear Tilt Position

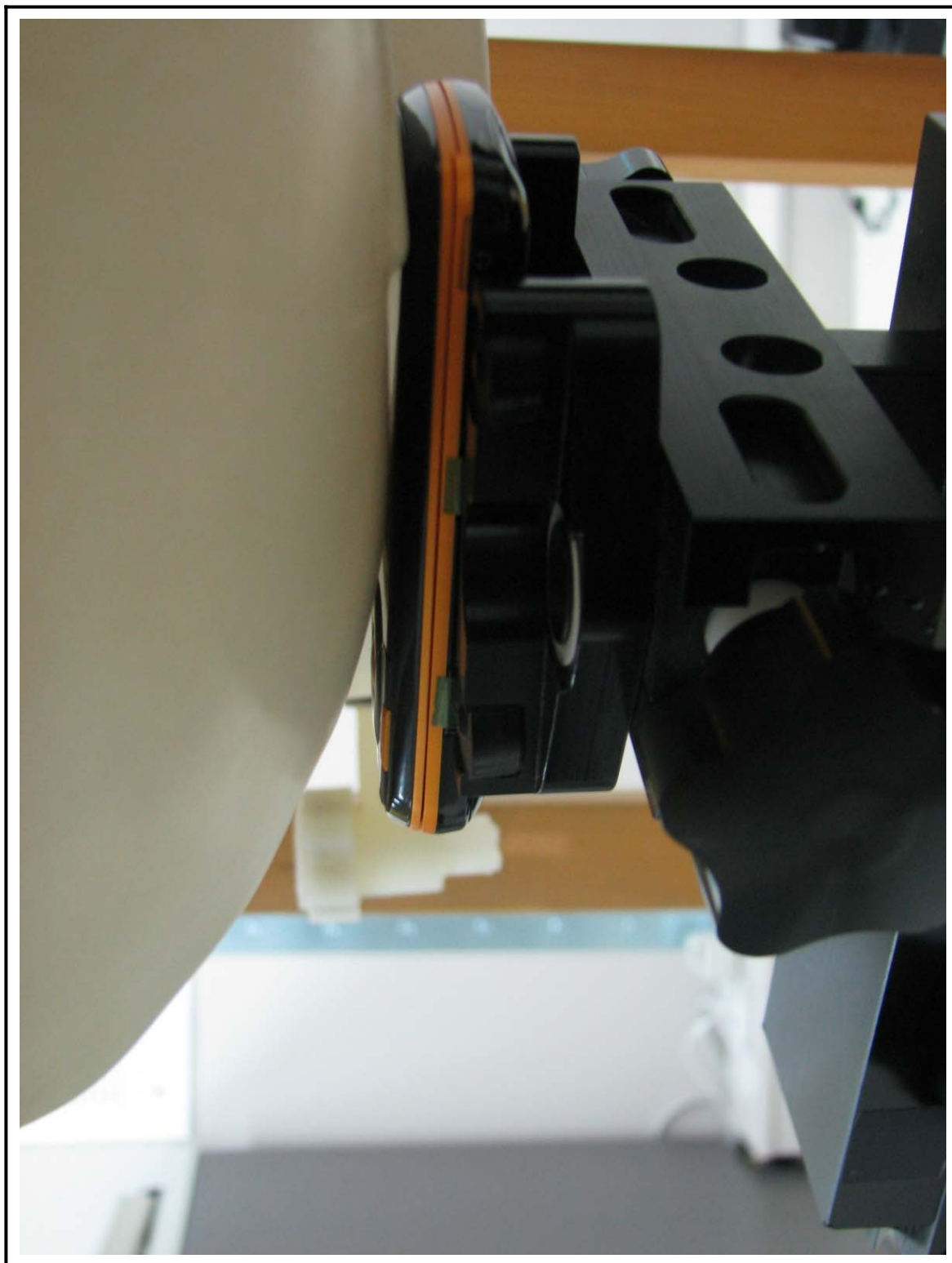


Figure 5 Left Head SAR Test Setup – Cheek Touch Position

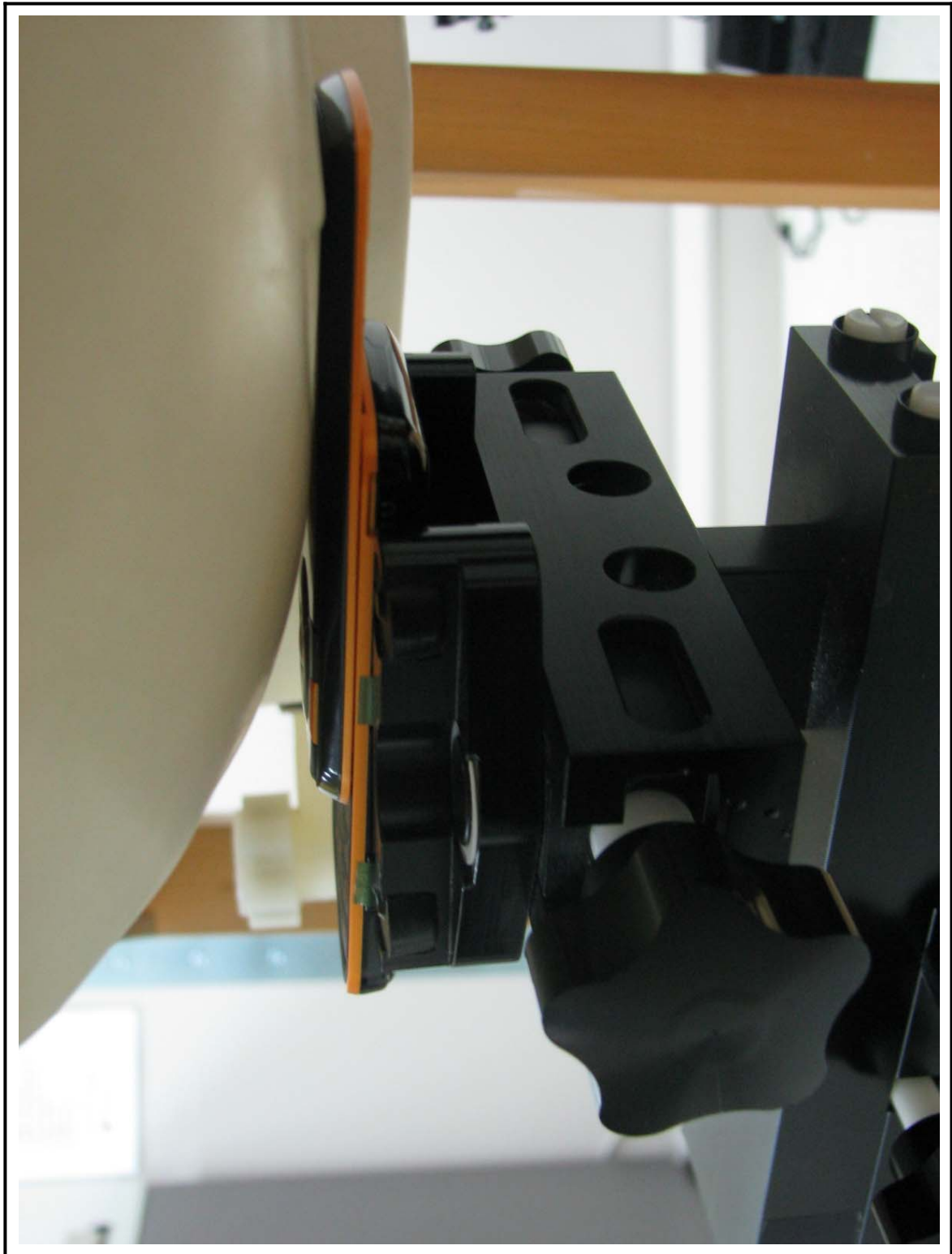


Figure 6 Left Head SAR Test Setup – Cheek Touch Position

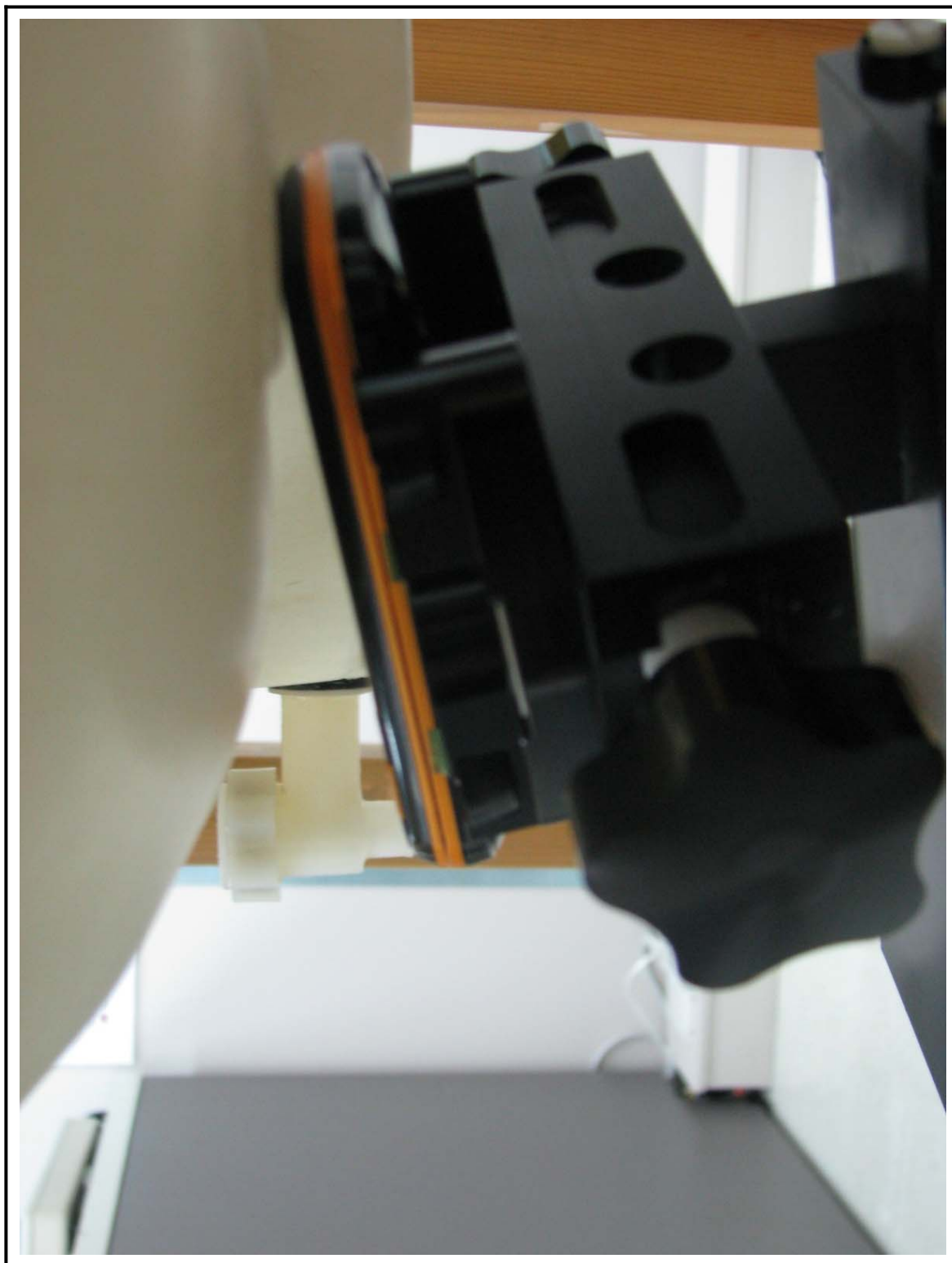


Figure 7 Left Head SAR Test Setup - Ear Tilt Position



Figure 8 Left Head SAR Test Setup - Ear Tilt Position



Figure 9 Body SAR Test Setup – w/o Holster



Figure 10 Body SAR Test Setup – w/o Holster



Figure 11 Body SAR Test Setup – w/o Holster



Figure 12 DUT Photo



Figure 13 DUT Photo



Figure 14 DUT Photo

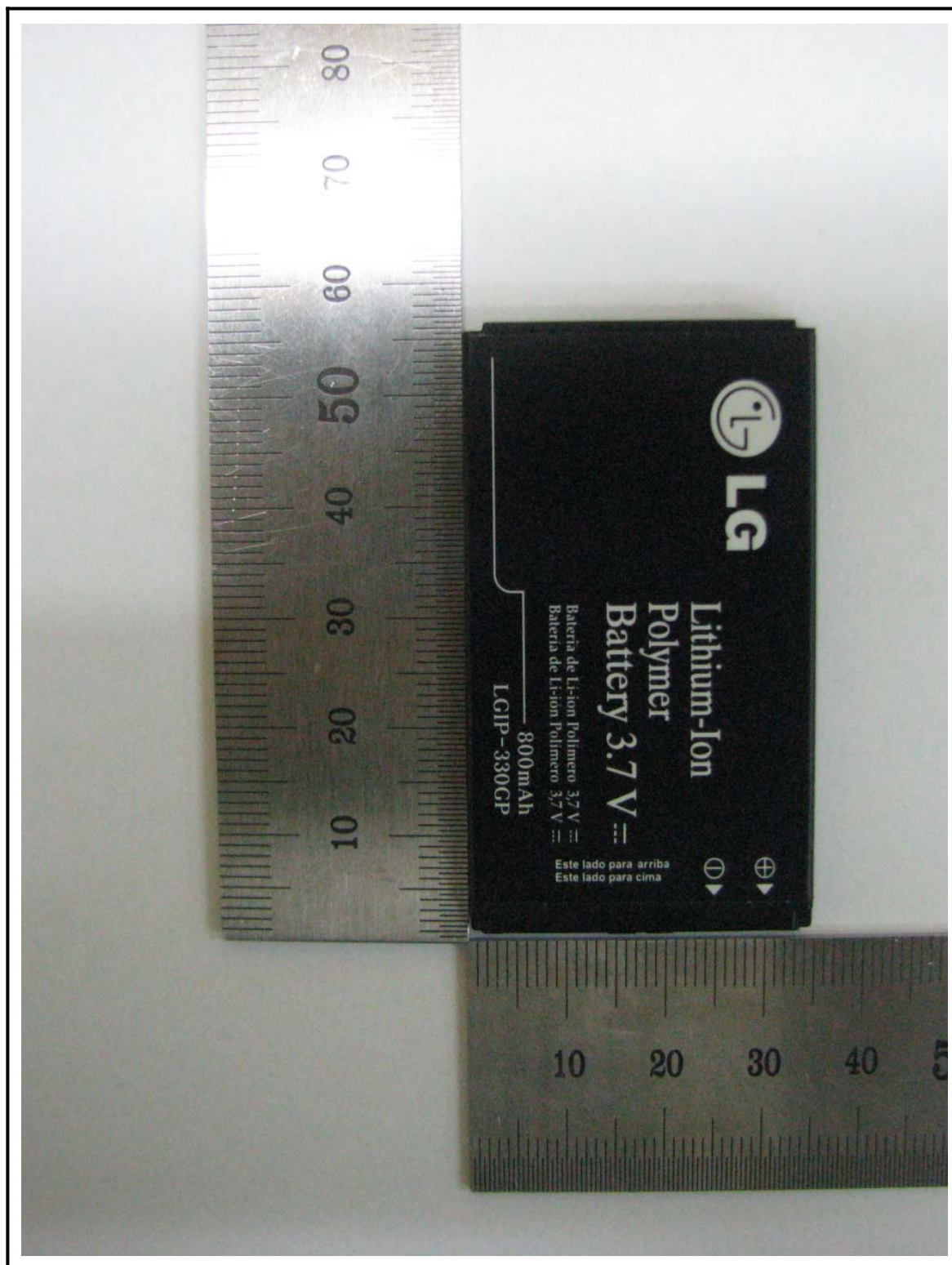


Figure 15 DUT Photo