

ATTACHMENT I – EXTERNAL PHOTOGRAPHS





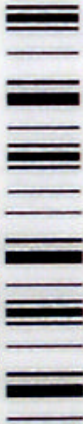




FLATRON 995FT Plus

LG
LG Twin Towers, 20, Yoido-Dong,
Youngdungpo-Gu, Seoul, 150-721, Korea.

MODEL NO. : FB995E-UA
POWER : AC100-240V
50/60Hz 2.5A
SERIAL NO. : 106KG00001



MANUFACTURED : JUNE 2001
FCC ID : BEJFB995E



Chassis No.: CA-95 Canadian ICES-003 Class B Apparaten skall anslutas till jordat nätuttag

Warning: This product includes critical mechanical and electrical parts which are essential for X radiation safety. For continued safety replace critical components indicated in the service manual only with exact replacement parts given in the parts list. Operating high voltage for this product is 28kV at minimum brightness. Refer to service manual for measurement procedures and proper service adjustments.

This device complies with FDA Radiation Performance Standards, 21 CFR Subchapter J, and complies With part 15 of the FCC Rules. Operation is subject to the following two conditions : (1) this device may not cause harmful interference, and (2) this device must accept any interference received, including interference that may cause undesired operation.

DIE IN DIESEM GERÄT ENTSTEHENDE RÖNTGENSTRAHLUNG IST DURCH EINE EIGENSICHERE KATHODENSTRAHLROHRE NACH ANLAGE III RÖNTGENVERORDNUNG AUSREICHEND ABGESCHIRMT. BESCHLEUNIGUNGSSPANNUNG : MAXIMAL 28KV

MADE IN KOREA 3850TIZ429A