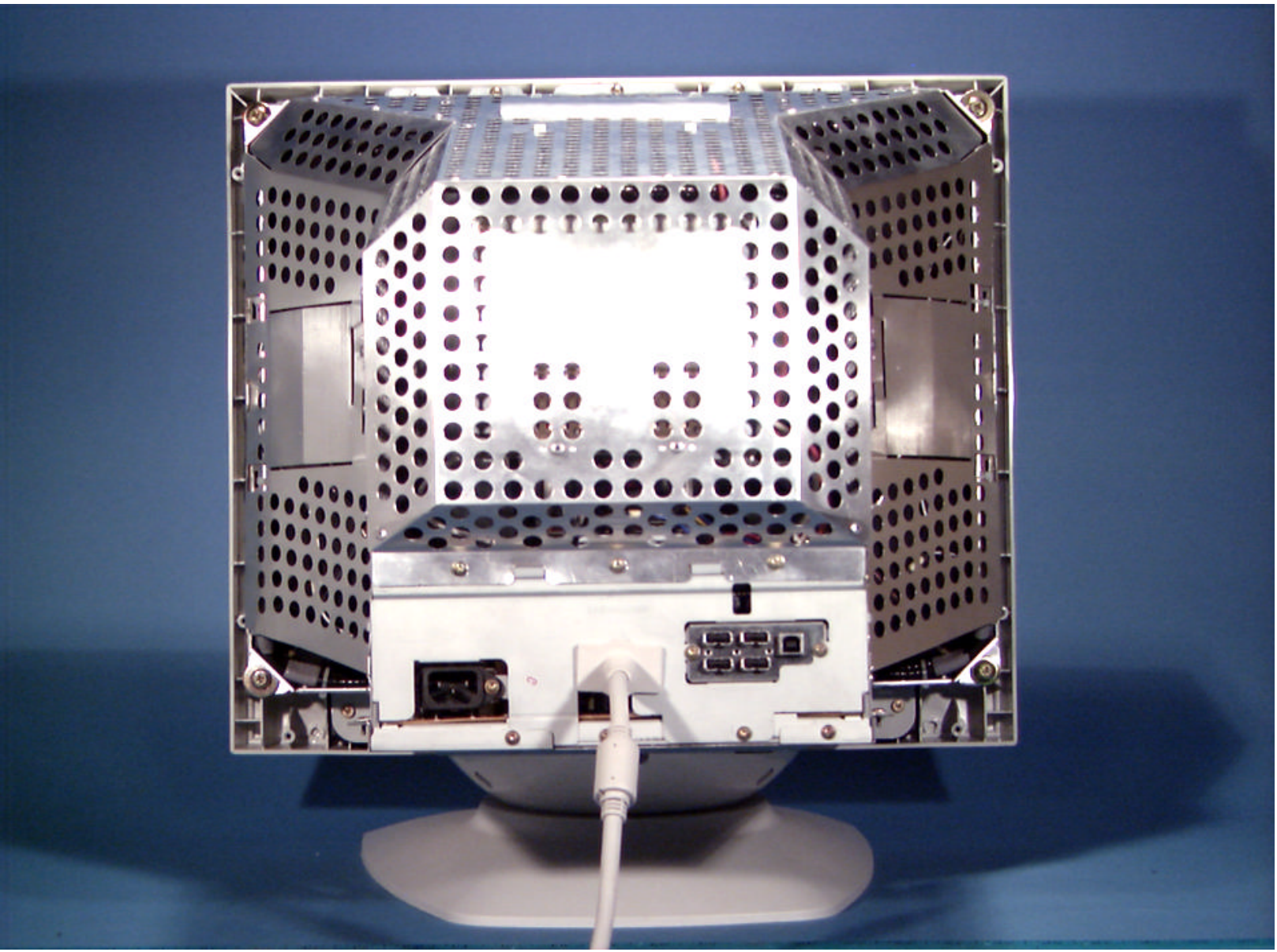


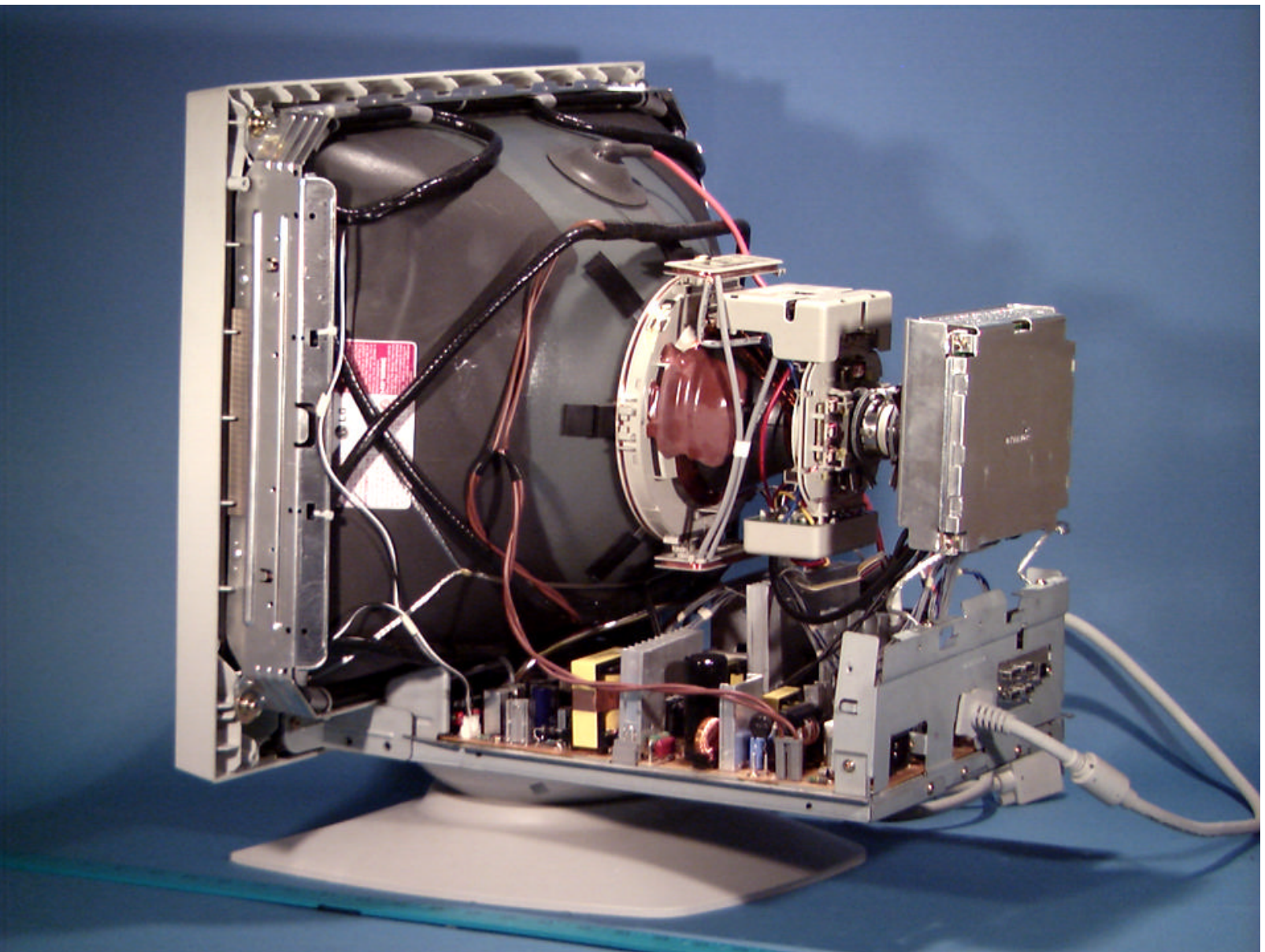


© 2000 PCTEST Lab

FCC ID: BEJFB995C
LG Electronics 19- Inch Color Monitor

NVLAP Lab Code: 1004310

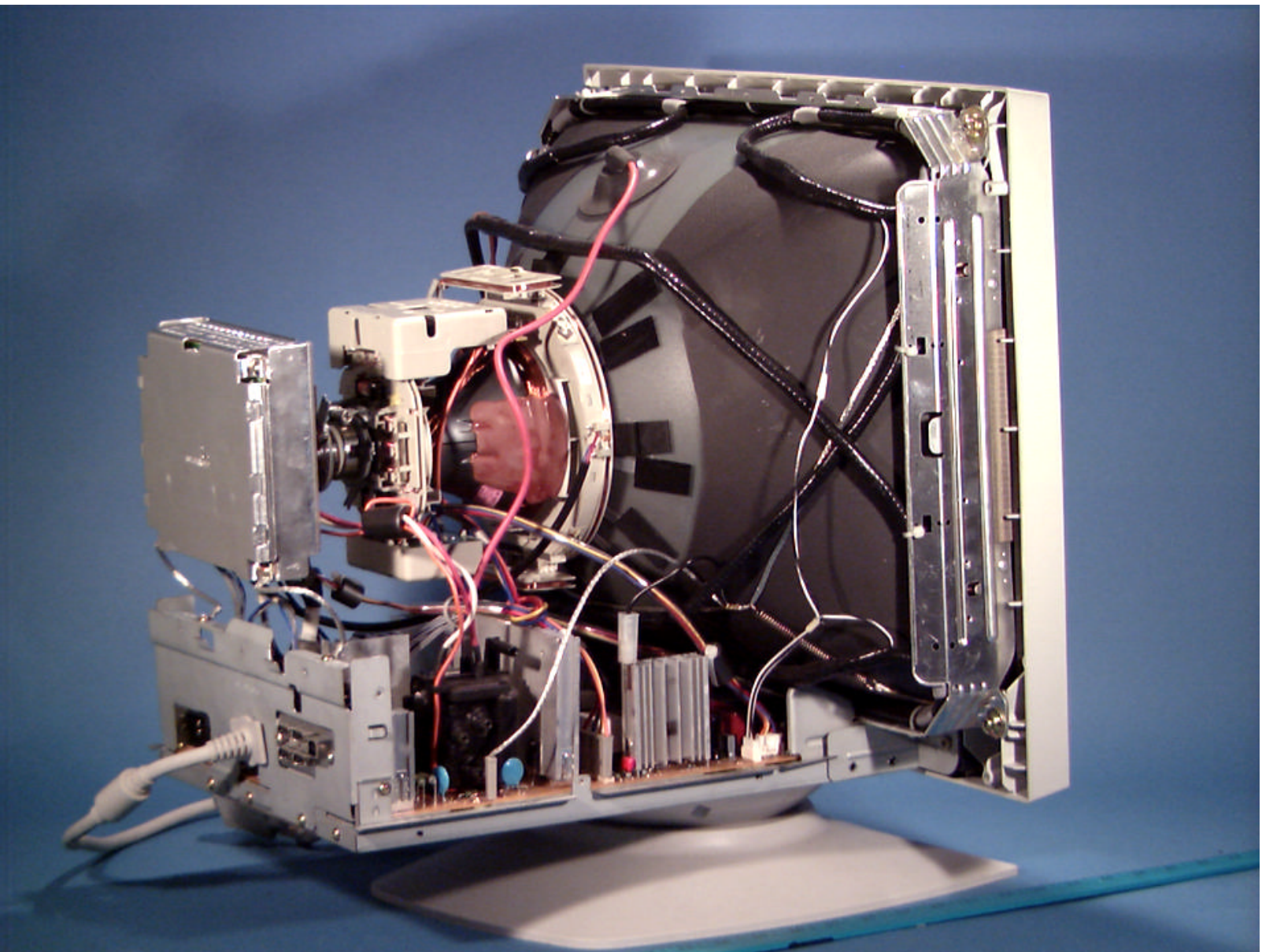




© 2000 PCTEST Lab

FCC ID: BEJFB995C
LG Electronics 19- Inch Color Monitor

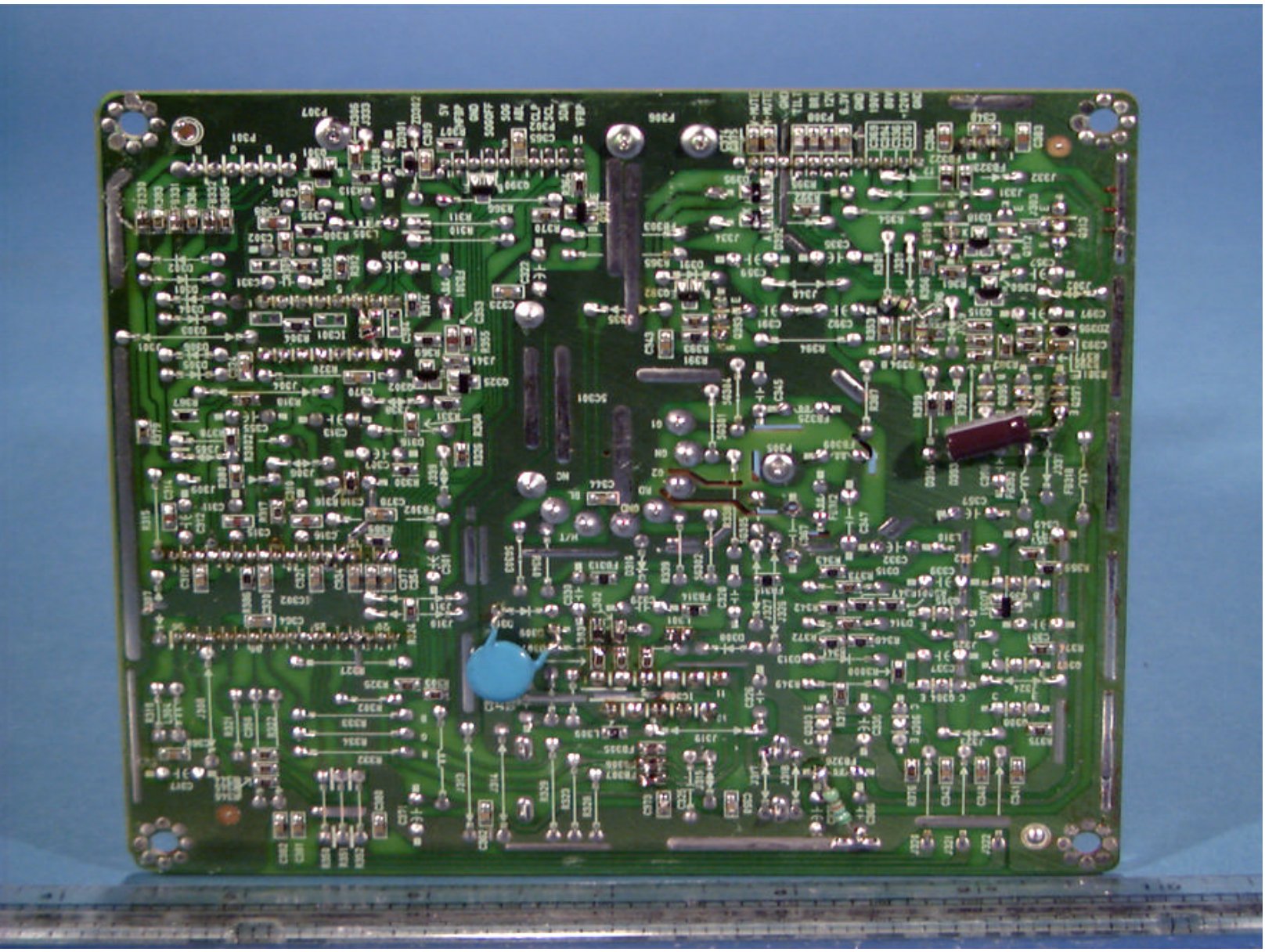
NVLAP Lab Code: 1004310

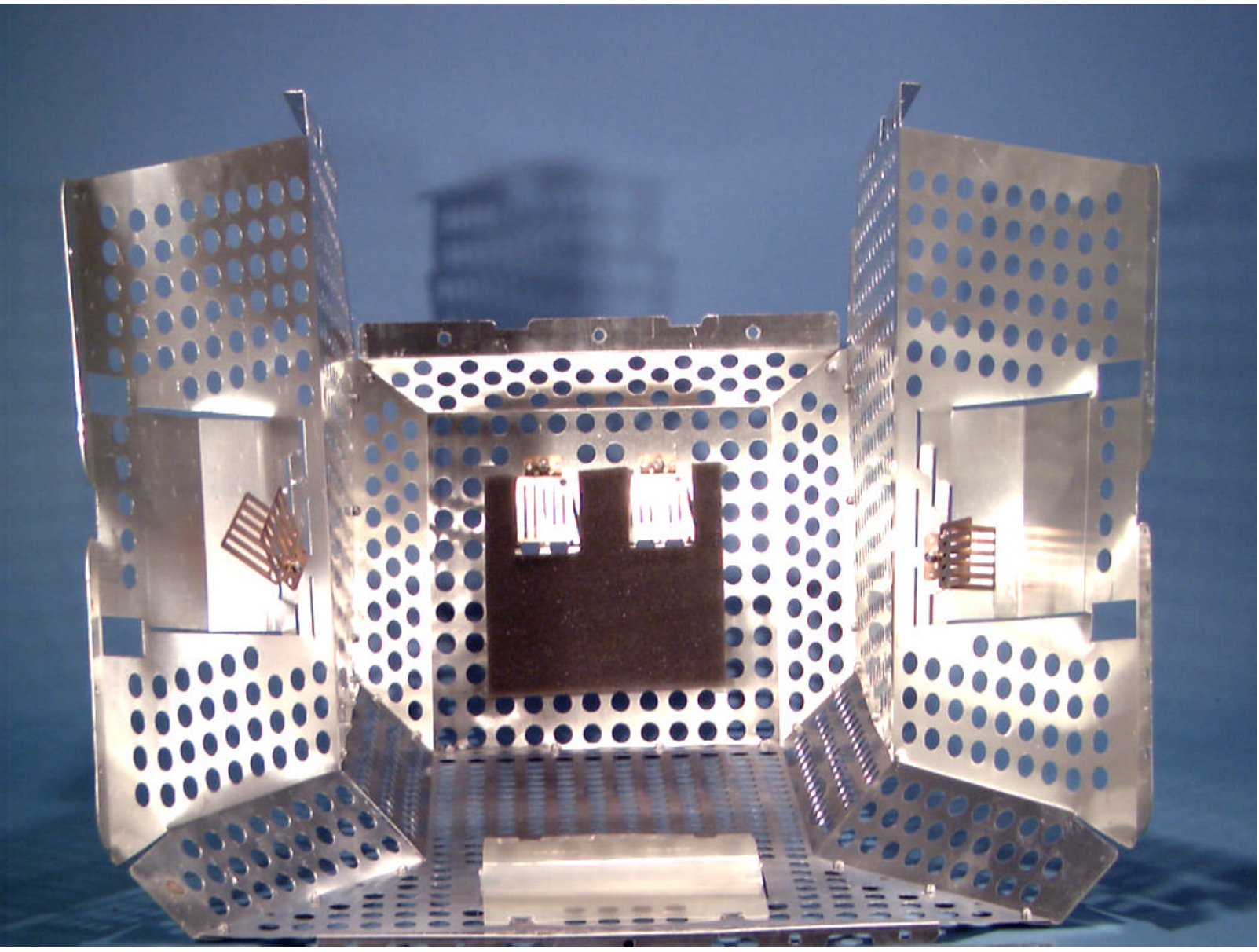


© 2000 PCTEST Lab

FCC ID: BEJFB995C
LG Electronics 19- Inch Color Monitor

NVLAP Lab Code: 1004310

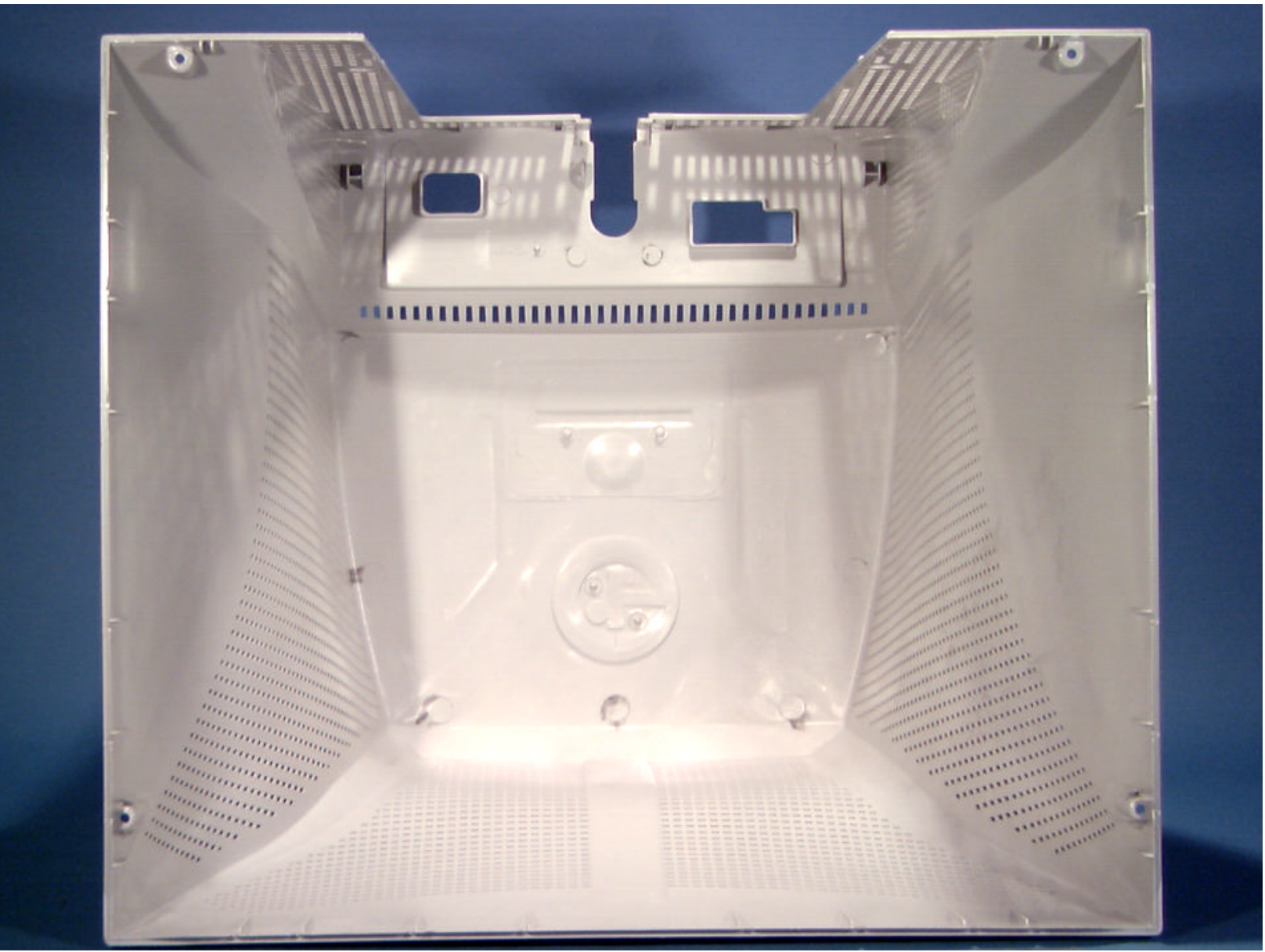




© 2000 PCTEST Lab

FCC ID: BEJFB995C
LG Electronics 19- Inch Color Monitor

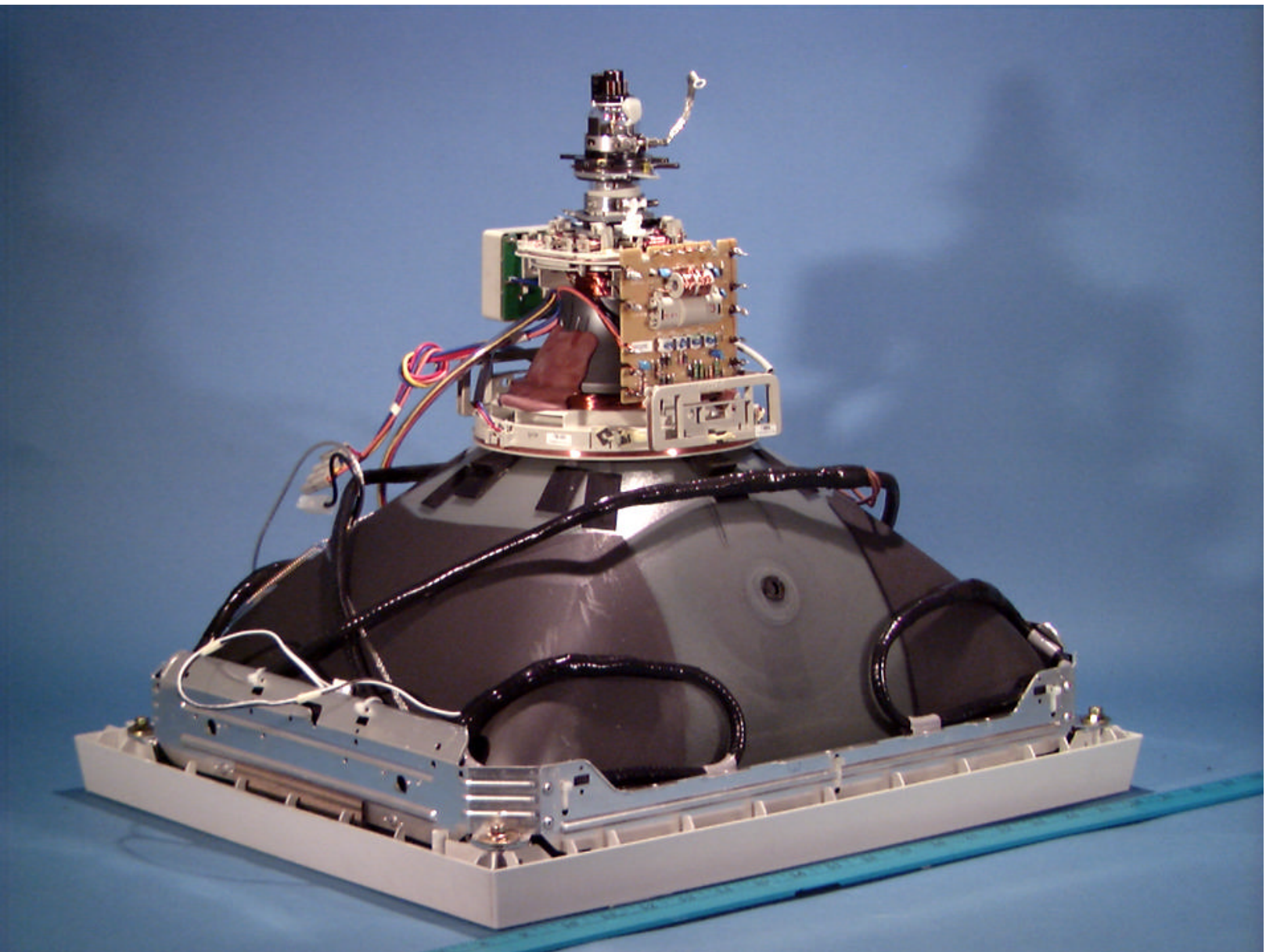
NVLAP Lab Code: 1004310



© 2000 PCTEST Lab

FCC ID: BEJFB995C
LG Electronics 19- Inch Color Monitor

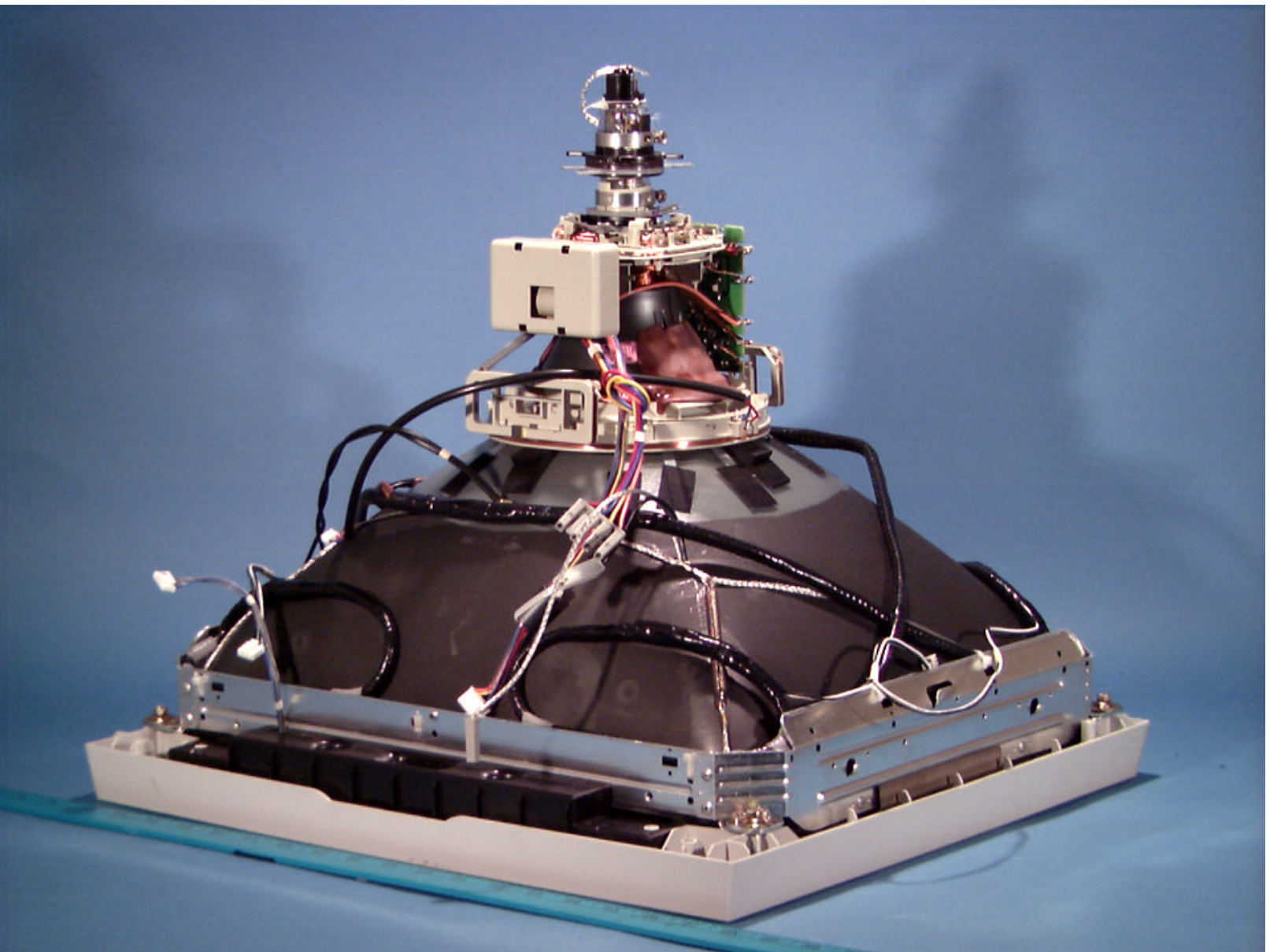
NVLAP Lab Code: 1004310



© 2000 PCTEST Lab

FCC ID: BEJFB995C
LG Electronics 19- Inch Color Monitor

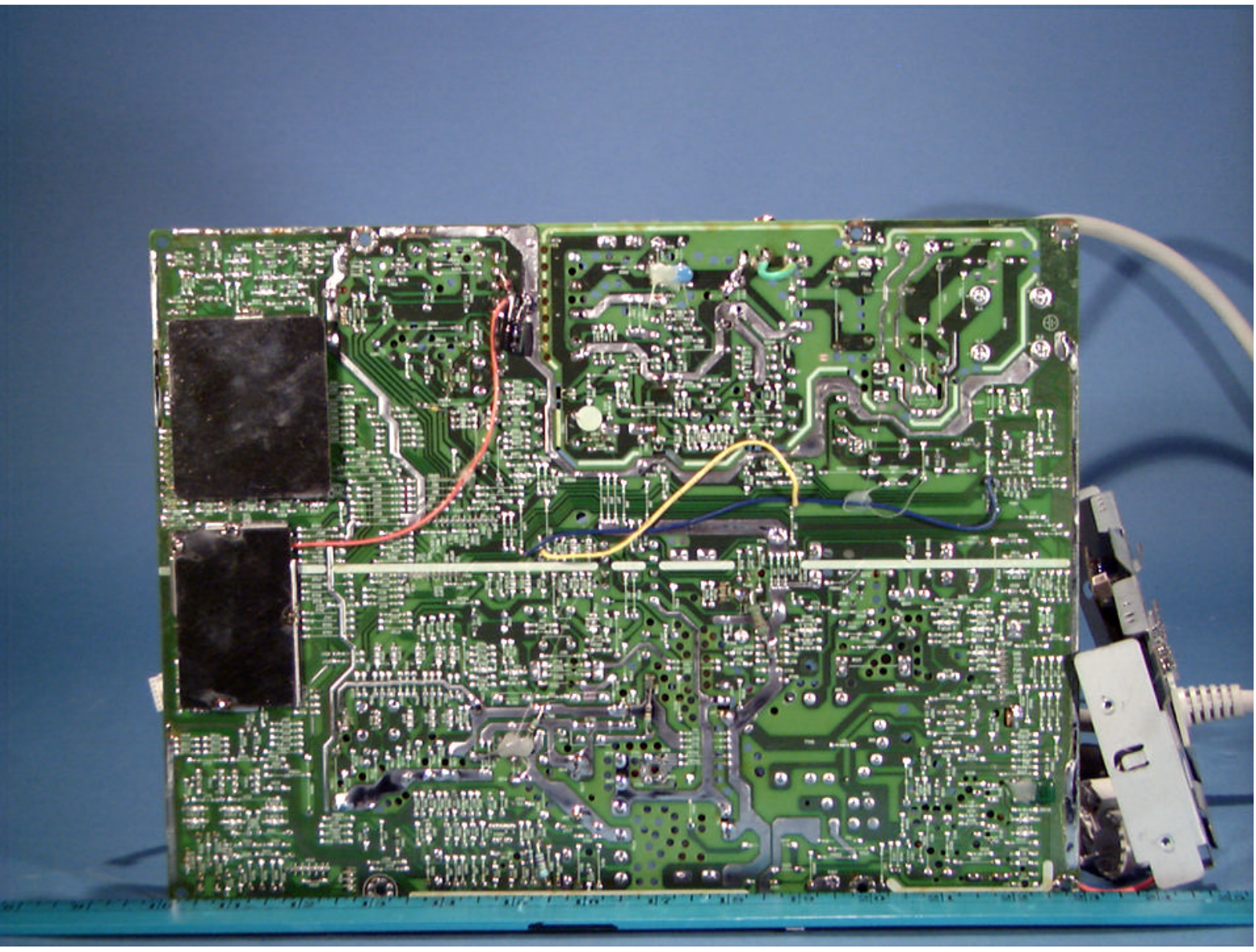
NVLAP Lab Code: 1004310



© 2000 PCTEST Lab

FCC ID: BELFB995C
LG Electronics 19- Inch Color Monitor

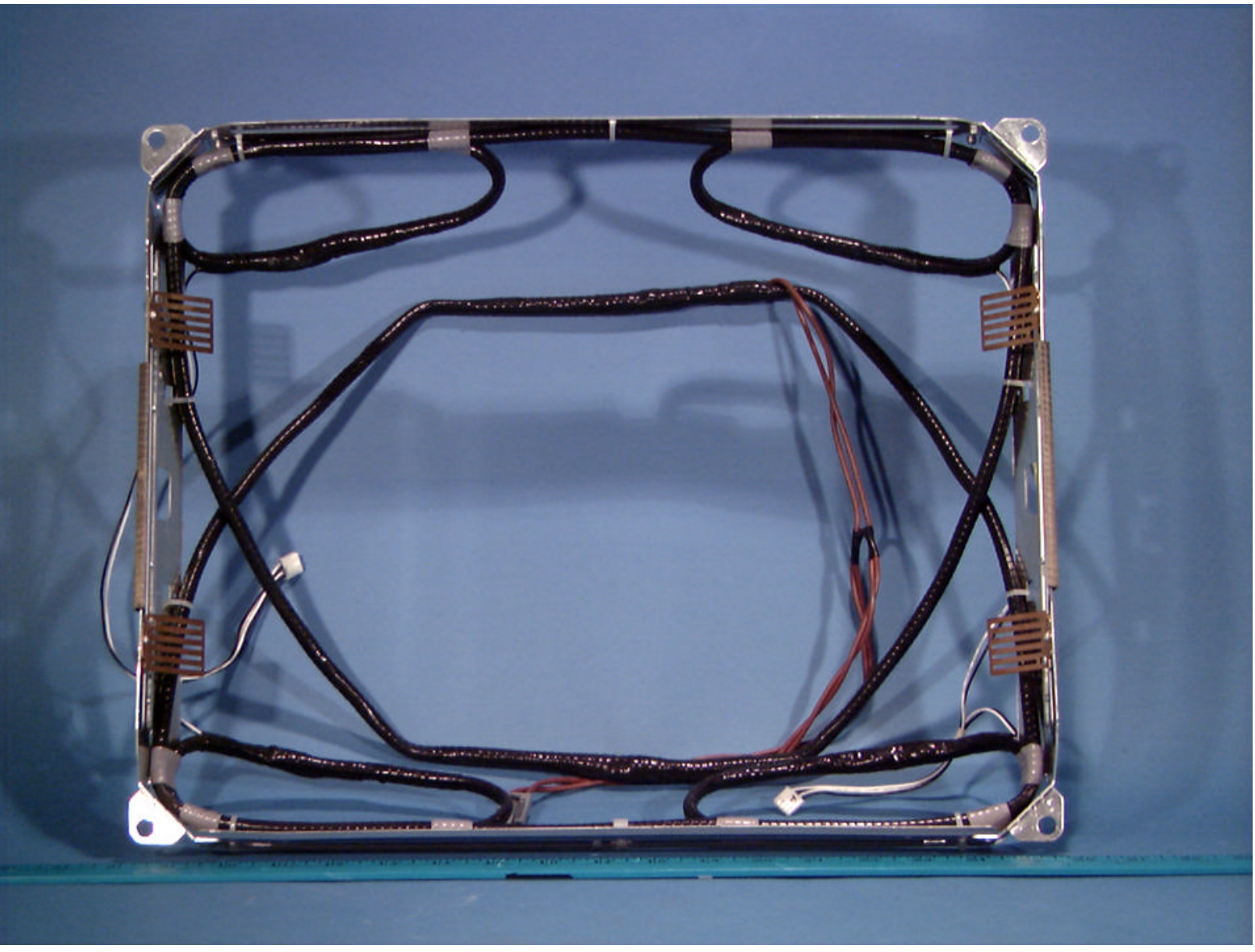
NVLAP Lab Code: 1004310

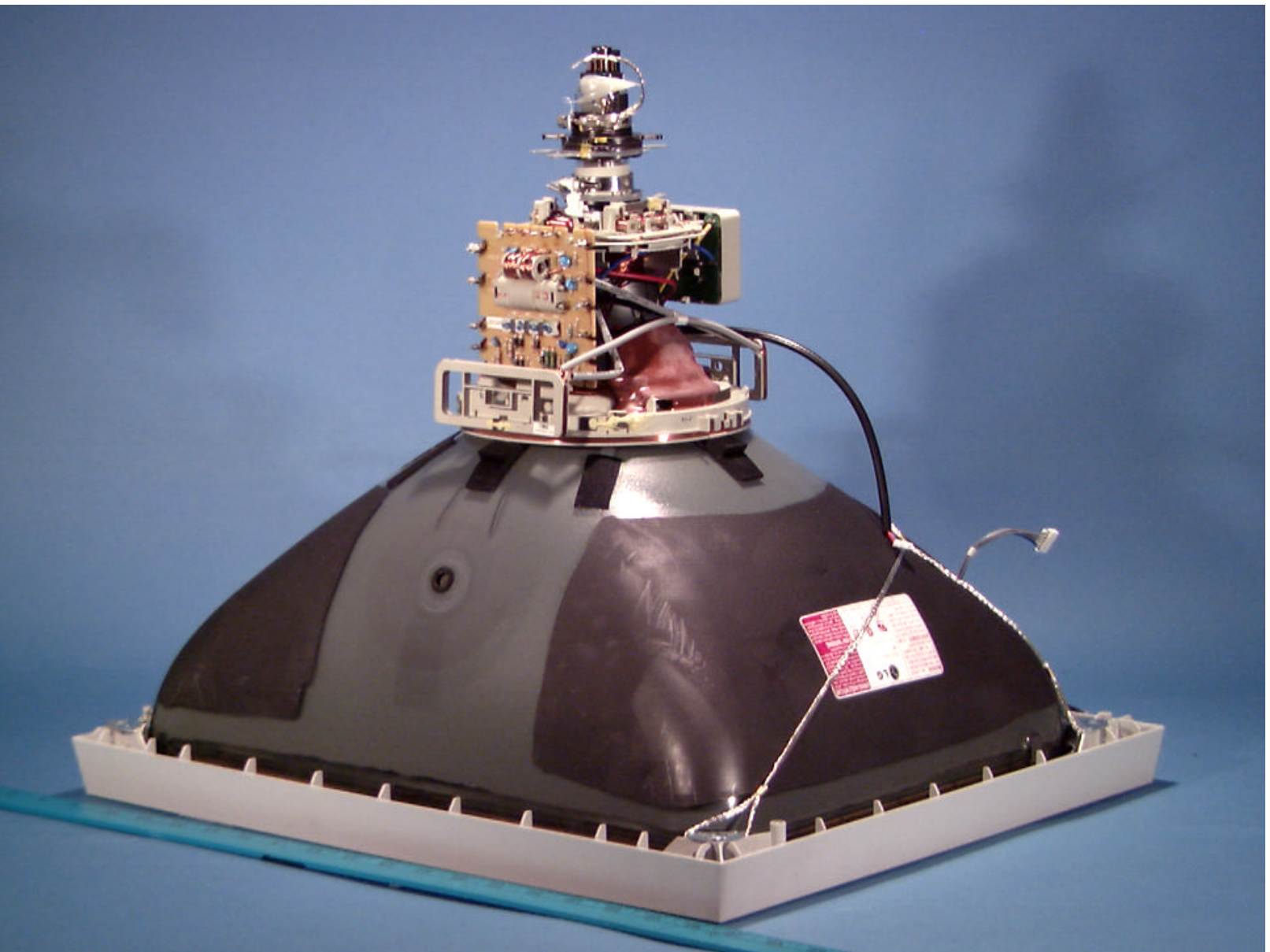


© 2000 PCTEST Lab

FCC ID: BEJFB995C
LG Electronics 19- Inch Color Monitor

NVLAP Lab Code: 1004310

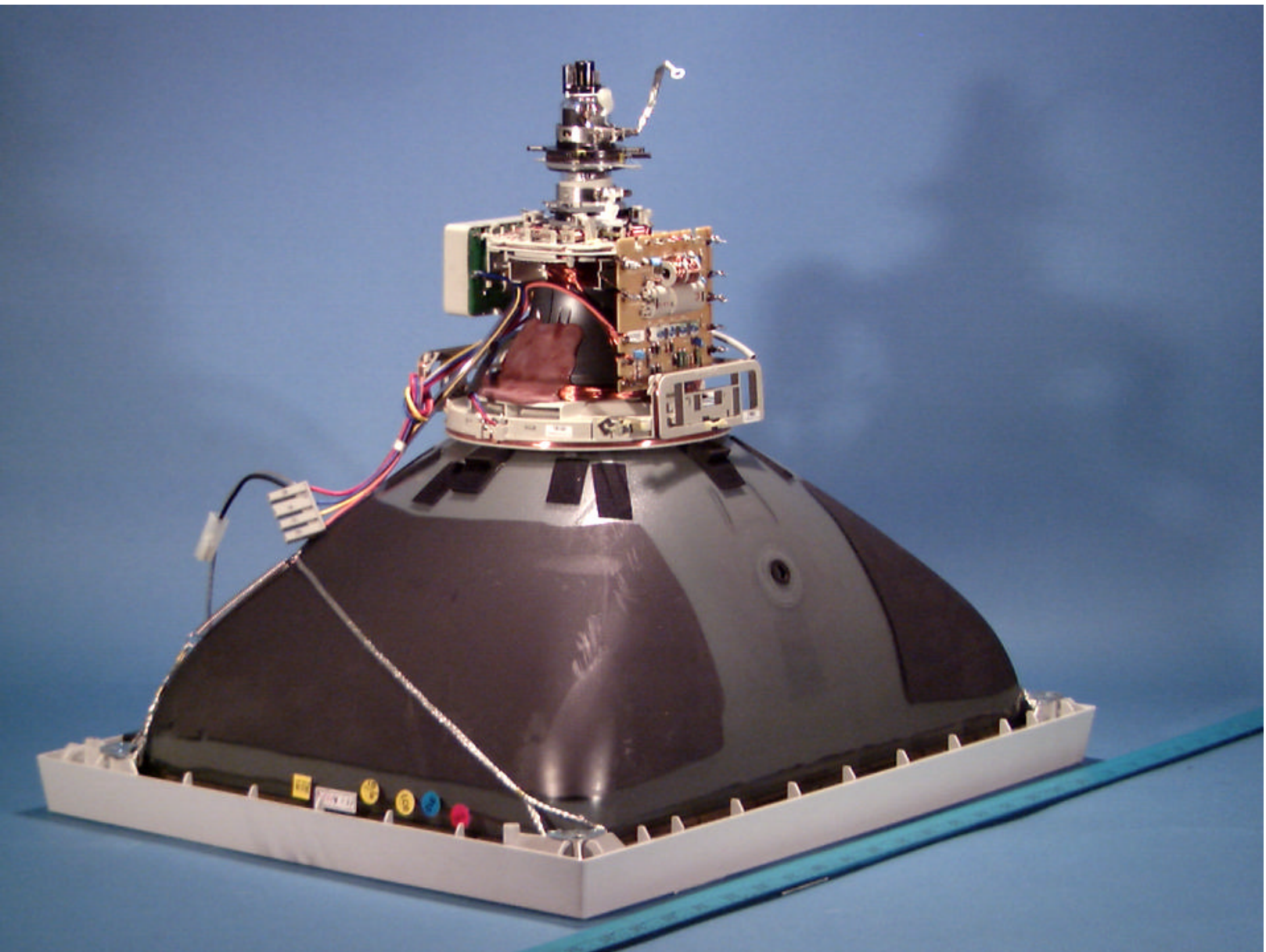




© 2000 PCTEST Lab

FCC ID: BEJFB995C
LG Electronics 19- Inch Color Monitor

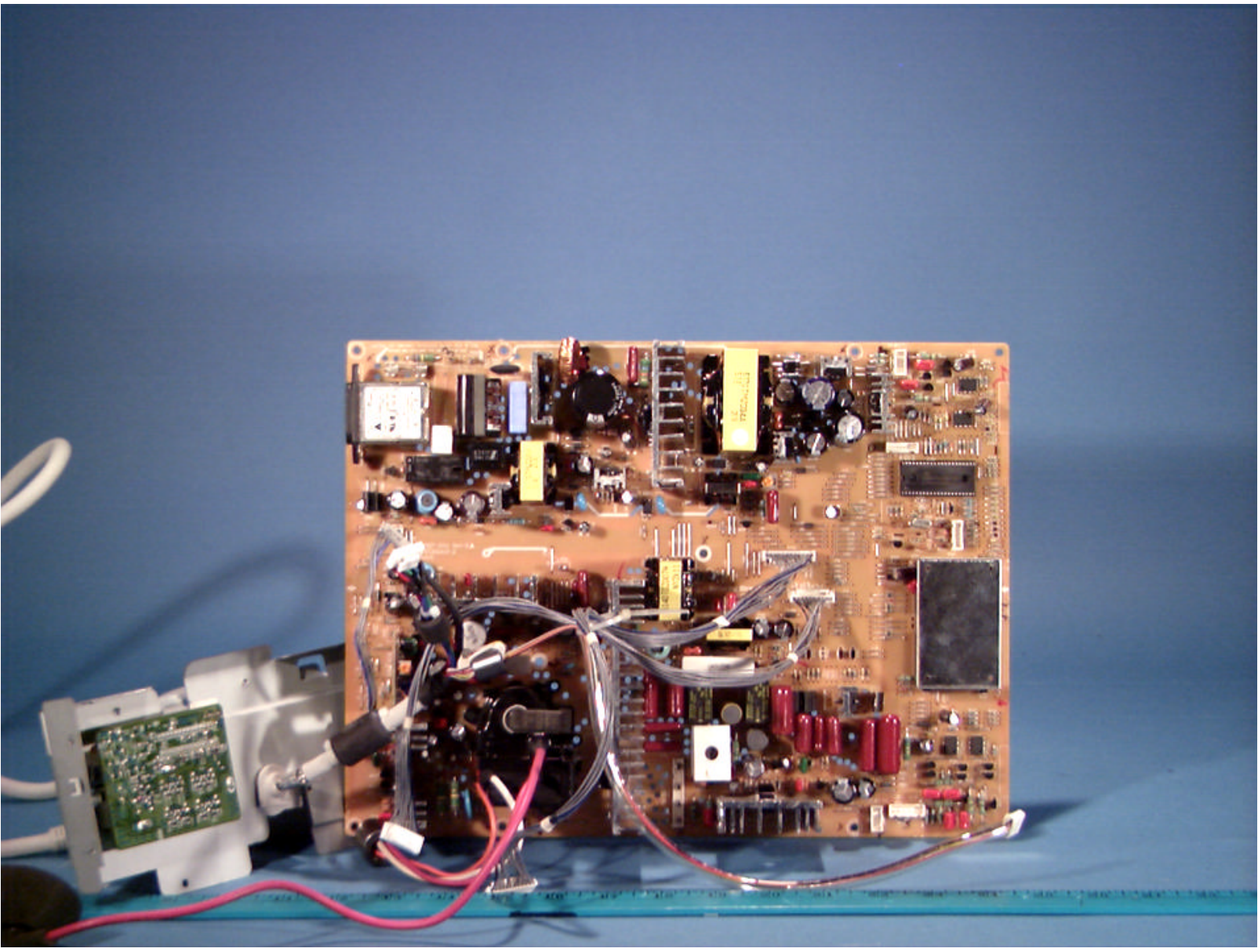
NVLAP Lab Code: 1004310



© 2000 PCTEST Lab

FCC ID: BEJFB995C
LG Electronics 19- Inch Color Monitor

NVLAP Lab Code: 1004310





WARNING: THIS CATHODE RAY TUBE EMPLOYS INTEGRAL IMPLOSION PROTECTION. REPLACE WITH A CATHODE RAY TUBE OF THE SAME TYPE NUMBER FOR CONTINUED SAFETY.

AVERTISSEMENT: CE TUBE CATHODIQUE EST ÉQUIPÉ D'UN DISPOSITIF INTÉGRÉ DE PROTECTION CONTRE L'IMPLOSION. REMPLACER PAR UN TUBE DE MÊME MODÈLE POUR NE PAS COMPROMETTRE LA SÉCURITÉ.

Eigensichere Kathodenstrahlröhre nach Anlage III der Röntgenverordnung.

M460DG423X 01

NO.

W2 00500175 N



E 119083



LR 41994



S07058



Made by LG Electronics, Korea

WARNING-HANDLE WITH CARE

Breakage of this tube, which contains a high vacuum, may result in injury from flying glass. Remove tube carefully from container. Do not strike or scratch the tube or subject it to more than moderate pressure when inserting into or removing from its socket in electronic equipment.

X-RAY WARNING

When picture tubes are operated above the design maximum anode voltage, and when personal exposure is prolonged at close range, special shielding precautions against x-radiation may be needed.

