

*FIGURE 1*  
*LCD MONITOR (M/N: E1950TV)*  
*GENERAL APPEARANCE (FRONT VIEW)*



*FIGURE 2*  
*LCD MONITOR (M/N: E1950TV)*  
*GENERAL APPEARANCE (BACK VIEW)*



*FIGURE 3*  
*LCD MONITOR (M/N: E1950TV)*  
*PORT VIEW*



*FIGURE 4*  
*LCD MONITOR (M/N: E1950TV)*  
*D-SUB CABLE #1*



*FIGURE 5*  
*LCD MONITOR (M/N: E1950TV)*  
*D-SUB CABLE #2*



*FIGURE 6*  
*LCD MONITOR (M/N: E1950TV)*  
*DVI CABLE #1*



*FIGURE 7*  
*LCD MONITOR (M/N: E1950TV)*  
*DVI CABLE #2*



*FIGURE 8*  
*LCD MONITOR (M/N: E1950TV)*  
*POWER CORD*



*FIGURE 9*  
*LCD MONITOR (M/N: E1950TV)*  
*ADAPTER #1 (GENERAL APPEARANCE)*



*FIGURE 10*  
*LCD MONITOR (M/N: E1950TV)*  
*ADAPTER #1 (POWER PORT)*



FIGURE 11  
 LCD MONITOR (M/N: E1950TV)  
 ADAPTER #1 (LABEL)



*FIGURE 12*  
*LCD MONITOR (M/N: E1950TV)*  
*ADAPTER #1 (COVER REMOVED)*



FIGURE 13  
LCD MONITOR (M/N: E1950TV)  
ADAPTER #1 (MAIN BOARD – COMPONENT SIDE)

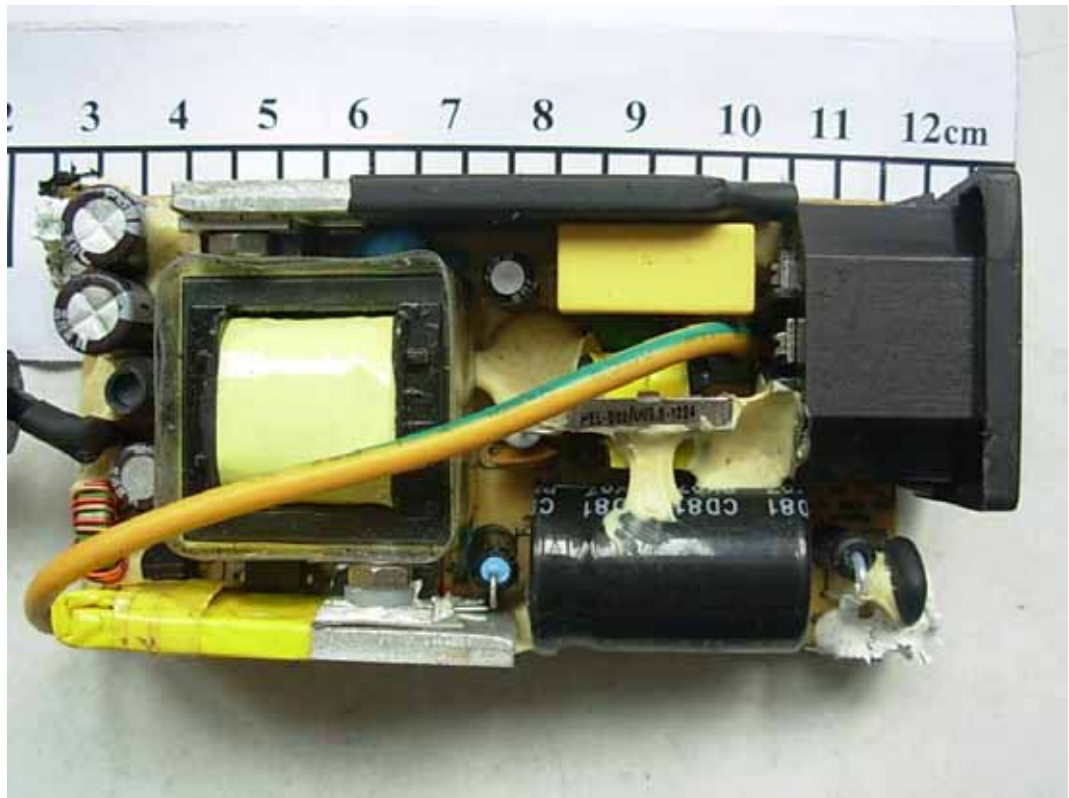
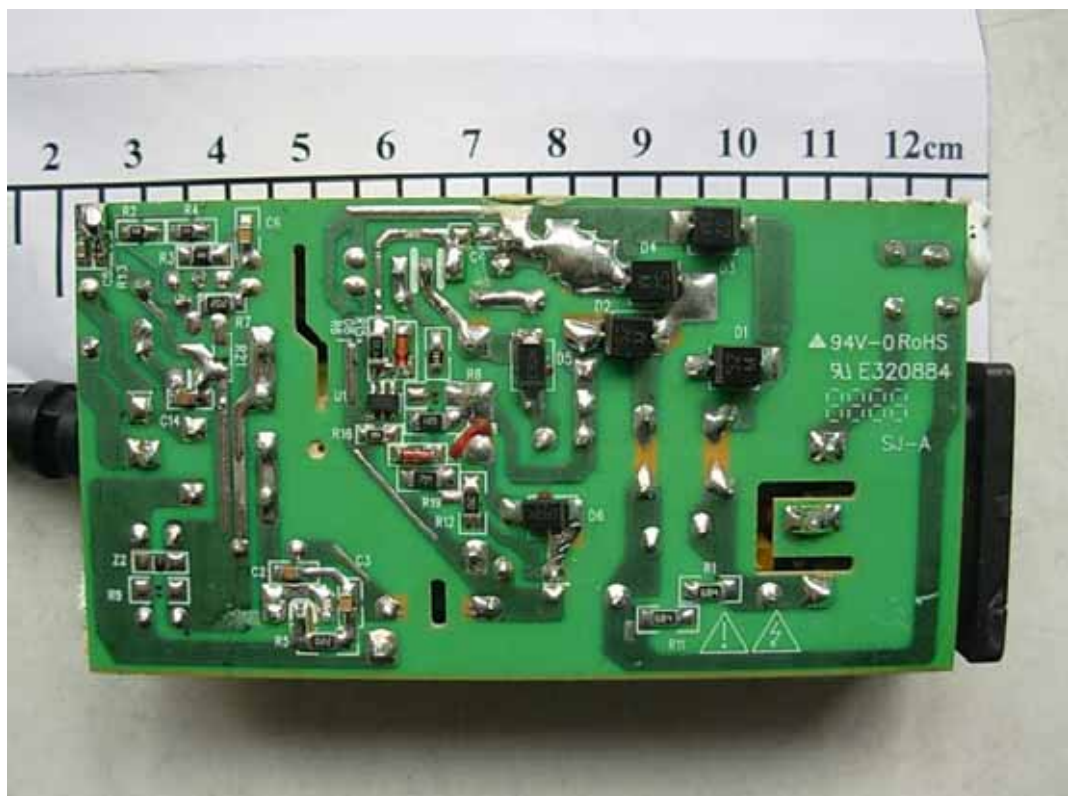


FIGURE 14  
LCD MONITOR (M/N: E1950TV)  
ADAPTER #1 (MAIN BOARD – SOLDERED SIDE)



*FIGURE 15*  
*LCD MONITOR (M/N: E1950TV)*  
*ADAPTER #2 (GENERAL APPEARANCE)*



*FIGURE 16*  
*LCD MONITOR (M/N: E1950TV)*  
*ADAPTER #2 (POWER PORT)*



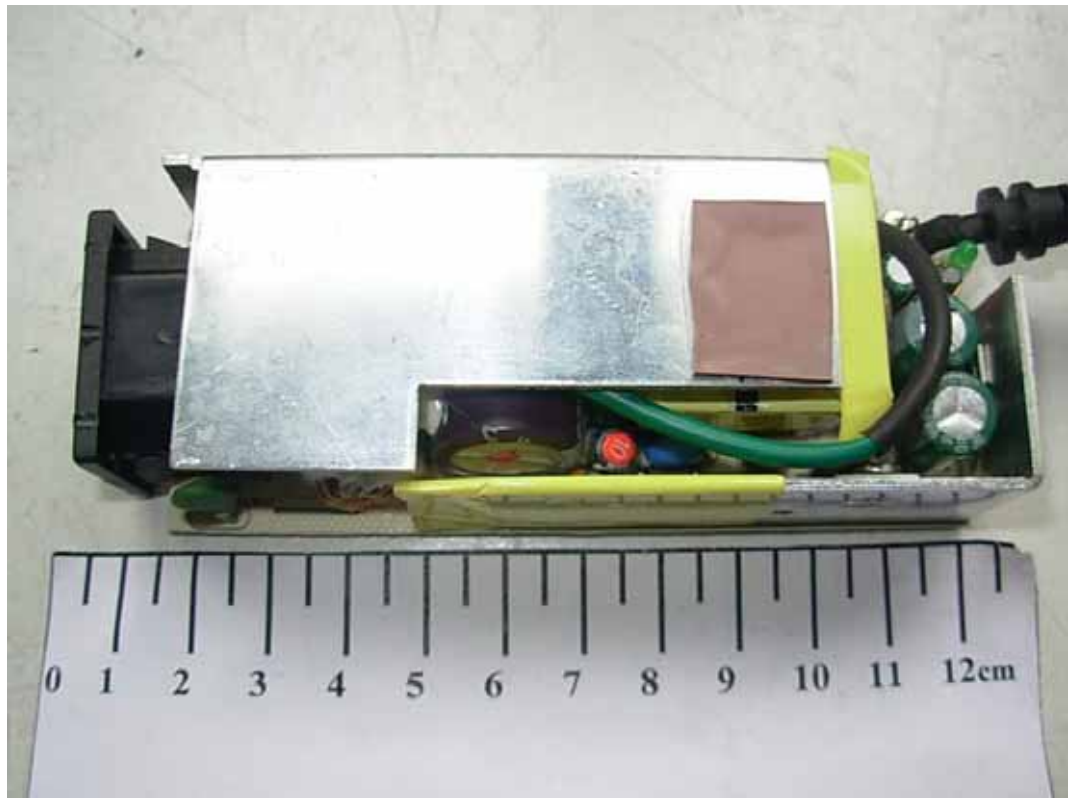
FIGURE 17  
 LCD MONITOR (M/N: E1950TV)  
 ADAPTER #2 (LABEL)



*FIGURE 18*  
*LCD MONITOR (M/N: E1950TV)*  
*ADAPTER #2 (COVER REMOVED)*



*FIGURE 19*  
*LCD MONITOR (M/N: E1950TV)*  
*ADAPTER #2 (MAIN BOARD – COMPONENT SIDE)*



*FIGURE 20*  
*LCD MONITOR (M/N: E1950TV)*  
*ADAPTER #2 (MAIN BOARD – SOLDERED SIDE)*

