



**APPENDIX B**  
**: INFORMATION OF CLASS II PERMISSIVE CHANGE**



## **Information of Class II Permissive Change**

This information is to show compliance with FCC regulation Sec. 2.1043 and to be treated as Class II permissive change. We declare that the basic frequencies of Clks, Xtals, processors/CPUs... used/ or Generated within device have not changed.

### **1. Identification of apparatus**

EUT Type: Household Electric Oven  
Model Name: LC389PC  
FCC ID.: BEJD179NAA  
Applicant: LG Electronics USA.

### **2. Contents of change(s): Touch PCB layout and schematic changes & Bracket**

#### **■ Original Main Board**

<Touch PCB > : **EBR82089401 Rev. 0.7**

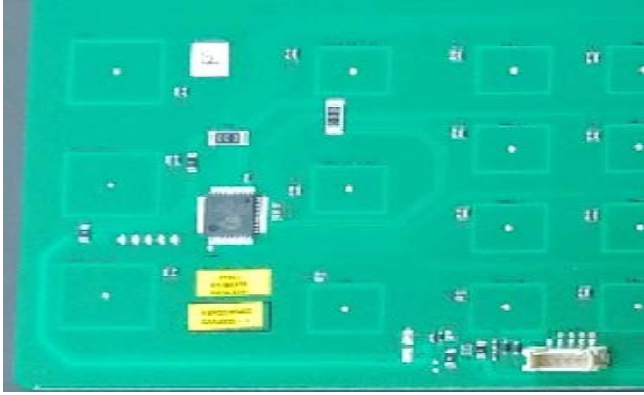
#### **■ New Main Board**

<Main PCB > : **EBR82089401 Rev. 1.3**

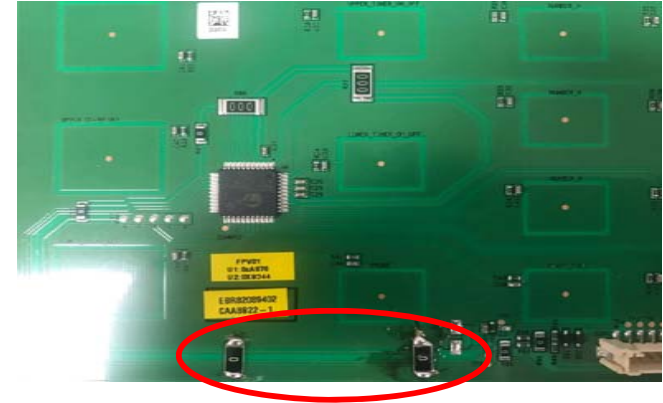
※Pictures of the Touch PCB & Bracket(original and new) within internal photos.

Refer to “APPENDIX E = INTERNAL PHOTOGRAPHS ; Touch PCB (45 Page – 50Page) & Bracket (146 Page ~149 Page)”

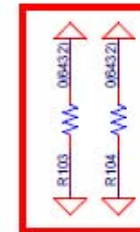
Original



New



19.08.23. 추가



# Bracket

LGE Internal Use Only

